

2007

Department of Radiology-Annual Executive Summary Report-July 1, 2006 to June 30, 2007

Vijay M. Rao M.D.

Let us know how access to this document benefits you

Follow this and additional works at: <http://jdc.jefferson.edu/radiologyadmin>Part of the [Radiology Commons](#)

Recommended Citation

Rao, Vijay M. M.D., "Department of Radiology-Annual Executive Summary Report-July 1, 2006 to June 30, 2007" (2007). *Radiology Administrative Documents and Reports*. Paper 14.<http://jdc.jefferson.edu/radiologyadmin/14>

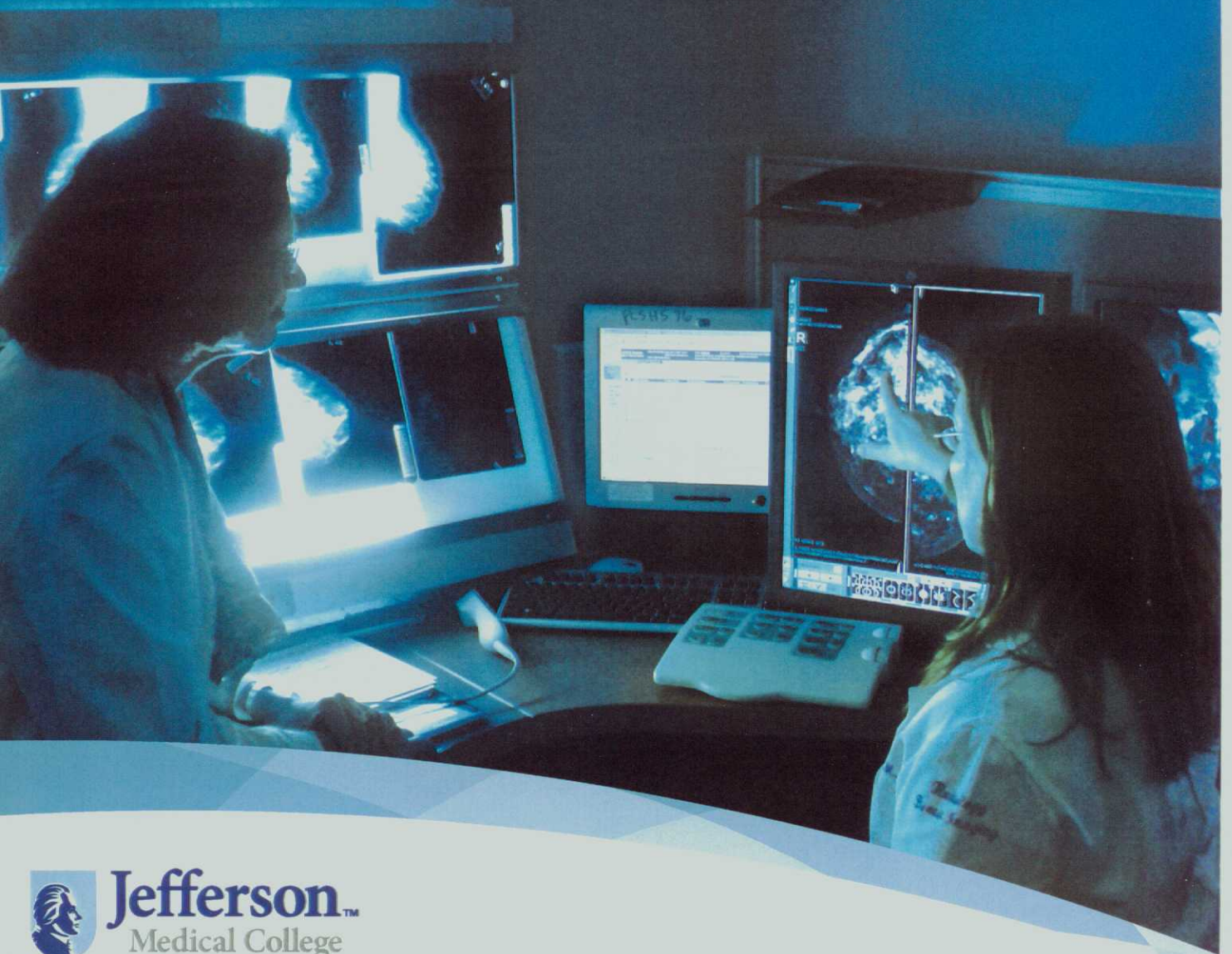
This Article is brought to you for free and open access by the Jefferson Digital Commons. The Jefferson Digital Commons is a service of Thomas Jefferson University's [Center for Teaching and Learning \(CTL\)](#). The Commons is a showcase for Jefferson books and journals, peer-reviewed scholarly publications, unique historical collections from the University archives, and teaching tools. The Jefferson Digital Commons allows researchers and interested readers anywhere in the world to learn about and keep up to date with Jefferson scholarship. This article has been accepted for inclusion in Radiology Administrative Documents and Reports by an authorized administrator of the Jefferson Digital Commons. For more information, please contact: JeffersonDigitalCommons@jefferson.edu.

06/07

Department of Radiology
Annual Report

Vijay M. Rao, M.D.
Professor and Chair

Reshaping the Future of Imaging



Jefferson[™]
Medical College

DEPARTMENT OF RADIOLOGY

The Mission of the Department of Radiology
is to provide quality diagnostic and
therapeutic imaging services and to
continually improve our services.

Our goals are to:

- Provide quality service to patients and referring physicians
 - Continue to grow successfully in an increasingly competitive market and be the leader
 - Operate in an efficient, productive, and cost effective manner
 - Maintain excellence of our educational programs
 - Continue to advance the science of translational and clinical imaging research
-

TABLE OF CONTENTS

Department of Radiology	
Chairman, Vice Chairmen.....	1
Divisions and Directors.....	1
Committees and Chairmen.....	1
Radiology Department Faculty Rank.....	2
Faculty with Secondary Appointments.....	3
Clinical Divisions.....	4
Radiology Residents and Fellows.....	5
Department Organizational Chart.....	6
Department Administration Chart.....	7
State of the Department.....	8
Publications	
Journal Articles.....	28
Books and Book Chapters.....	34
Abstracts.....	36
Formal Scientific Presentations.....	46
Honors, Editorial Activities, Service to Regional or National Organizations.....	65
Appendix:	
Table 1 Active Grants	
Table 2 Pending Grants	

DEPARTMENT OF RADIOLOGY

Vijay M. Rao, M.D.
Professor and Chairman

Geoffrey A. Gardiner, Jr., M.D.	Vice Chair for Clinical Practice
Barry B. Goldberg, M.D.	Vice Chair for Strategic Planning
Ethan J. Halpern, M.D.	Vice Chair for Research
Christopher R.B. Merritt, M.D.	Vice Chair for Information Technology
Levon N. Nazarian, M.D.	Vice Chair for Education

2006-2007

DEPARTMENT CLINICAL DIVISIONS AND DIRECTORS

BODY COMPUTED TOMOGRAPHY/ABDOMINAL IMAGING	Laurence Needleman, M.D.
BREAST IMAGING/AMBULATORY RADIOLOGY	Annina N. Wilkes, M.D.
CARDIOVASCULAR/INTERVENTIONAL RADIOLOGY	Kevin L. Sullivan, M.D.
MAGNETIC RESONANCE IMAGING	Donald G. Mitchell, M.D.
MUSCULOSKELETAL AND GENERAL DIAGNOSTIC RADIOLOGY	William B. Morrison, M.D.
NEURORADIOLOGY/HEAD AND NECK RADIOLOGY	Adam E. Flanders, M.D. David P. Friedman, M.D.
NUCLEAR MEDICINE	Charles M. Intenzo, M.D.
THORACIC RADIOLOGY	Narainder Gupta, M.D.
ULTRASOUND	Barry B. Goldberg, M.D.
METHODIST HOSPITAL DIVISION	Larry A. Caputo, M.D.

DEPARTMENTAL COMMITTEES AND CHAIRMEN

ADVISORY COMMITTEE	Alfred B. Kurtz, M.D.
CONTRAST COMMITTEE	Laurence Needleman, M.D.
EDUCATION COMMITTEE	Levon N. Nazarian, M.D.
INFORMATICS COMMITTEE	Adam E. Flanders, M.D.
PERFORMANCE IMPROVEMENT COMMITTEE	Christopher R.B. Merritt, M.D.
SCIENTIFIC ADVISORY FOR IMAGING RESEARCH	Barry B. Goldberg, M.D. Ethan J. Halpern, M.D.
RESIDENCY SELECTION COMMITTEE	Levon N. Nazarian, M.D.

**RADIOLOGY DEPARTMENT FACULTY RANK
2006-2007**

PROFESSORS

Rick I. Feld, M.D.
Adam E. Flanders, M.D.
Flemming Forsberg, Ph.D.
Geoffrey A. Gardiner, Jr., M.D.
Barry B. Goldberg, M.D.
Ethan J. Halpern, M.D., M.S.C.E.
Charles M. Intenzo, M.D.
David Karasick, M.D.
Stephen Karasick, M.D.
Alfred B. Kurtz, M.D.
Anna S. Lev-Toaff, M.D.
Christopher R.B. Merritt, M.D.
Donald G. Mitchell, M.D.
Levon N. Nazarian, M.D.
Vijay M. Rao, M.D.
Kevin L. Sullivan, M.D.
Mathew L. Thakur, Ph.D.

RESEARCH PROFESSOR

Ji-Bin Liu, M.D.

EMERITUS PROFESSOR

David C. Levin, M.D.

ASSOCIATE PROFESSORS

Paul Acton, Ph.D.
Oksana H. Baltarowich, M.D.
David J. Eschelmann, M.D.
David P. Friedman, M.D.
Song Lai, Ph.D.
William B. Morrison, M.D.
Laurence Needleman, M.D.
Lisa M. Tartaglino, M.D.
Pamela Van Tassel, M.D.

ASSISTANT PROFESSORS

Diane Bergin, M.D.
Diane Deely, M.D.
Haroon H. Durrani, M.D.
Steven G. Finden, D.D.S., M.D.
Carin F. Gonsalves, M.D.
Angela G. Gopez, M.D.
Richard J. Gorniak, M.D.
Narainder K. Gupta, M.D.
Sung M. Kim, M.D.
Patrick L. O'Kane, M.D.
Sharon R. Segal, D.O.
Dinesh K. Sharma, M.D.
Zsuzsanna P. Therien, M.D.
Annina N. Wilkes, M.D.
Adam C. Zoga, M.D.

**CLINICAL ASSISTANT
PROFESSORS**

Patti J. Herling, M.D.
Bentley Hollander, M.D.
Cindy Isaacson Finden, M.D.
Lynn Lucas-Fehm, M.D.
Terri Tuckman, M.D.

**RESEARCH ASSISTANT
PROFESSOR**

Eric Gingold, Ph.D.
Laurence Parker, Ph.D.
Shaoxiong Zhang, M.D., Ph.D.

INSTRUCTORS

Susan DeWyngaert, M.D.
Jamie Lee Thomas, D.O.
Michael J. Wolf, M.D.

FACULTY WITH SECONDARY APPOINTMENTS IN RADIOLOGY

Demetrius H. Bagley, M.D., Professor of Urology [primary]
Associate Professor of Radiology [secondary]

Robert L. Brent, M.D., Ph.D., Professor of Pediatrics [primary]
Professor of Radiology [secondary]

Paul J. DiMuzio, M.D., Assistant Professor of Surgery [primary]
Assistant Professor of Radiology [secondary]

Christopher L. Hansen, M.D., Professor of Medicine [primary]
Professor of Radiology [secondary]

Robert H. Rosenwasser, M.D., Professor of Neurosurgery [primary]
Professor of Radiology [secondary]

Stanton N. Smullens, M.D., Professor of Surgery [primary]
Associate Professor of Radiology [secondary]

Paul Walinsky, M.D., Professor of Medicine [primary]
Assistant Professor of Radiology [secondary]

DEPARTMENT OF RADIOLOGY

Vijay M. Rao, M.D., Chairman

CLINICAL DIVISIONS 2006-2007

Body Computed Tomography/ Abdominal Imaging

Directed by Laurence Needleman, M.D.
Drs. Oksana Baltarowich, Haroon Durrani, Rick Feld, Ethan Halpern, Patti Herling, Stephen Karasick, Alfred Kurtz, Anna Lev-Toaff, Levon Nazarian, Patrick O'Kane

Breast Imaging/ Ambulatory Radiology

Directed by Annina N. Wilkes, M.D. (acting director)
Drs. Susan DeWyngaert, Cindy Finden, Valerie Gilliam, Bentley Hollander, Lynn Lucas-Fehm, Zsuzsanna Therien

Cardiothoracic Radiology

Directed by Narainder Gupta, M.D.
Drs. Cindy Finden, Ethan Halpern, Patti Herling, David Karasick, Stephen Karasick, David Levin, Dinesh Sharma

Cardiovascular/ Interventional Radiology

Directed by Kevin L. Sullivan, M.D.
Drs. David Eschelmann, Geoffrey Gardiner, Jr., Carin Gonsalves, Jamie Lee Thomas

Magnetic Resonance Imaging

Directed by Donald G. Mitchell, M.D.
Drs. Diane Bergin, Diane Deely, Angela Gopez, William Morrison, Patrick O'Kane, Adam Zoga

Musculoskeletal and General Diagnostic Radiology

Directed by William B. Morrison, M.D.
Drs. Diane Bergin, Diane Deely, Cindy Finden, Angela Gopez, Narainder Gupta, Patti Herling, David Karasick, Stephen Karasick, Dinesh Sharma, Adam Zoga

Neuroradiology/ENT Radiology

**Directed by Adam Flanders, M.D.,
David Friedman, M.D.**
Drs. Steven Finden, Richard Gorniak, Vijay Rao, Dinesh Sharma, Lisa Tartaglino, Pamela Van Tassel, Michael Wolf

Nuclear Medicine

Directed by Charles M. Intenzo, M.D.
Drs. Narainder Gupta, Sung Kim

Ultrasound

Directed by Barry B. Goldberg, M.D.
Drs. Oksana Baltarowich, Diane Bergin, Haroon Durrani, Rick Feld, Ethan Halpern, Patti Herling, Alfred Kurtz, Anna Lev-Toaff, Christopher Merritt, Donald Mitchell, Levon Nazarian, Laurence Needleman, Patrick O'Kane, Sharon Segal, Terri Tuckman, Annina Wilkes

Research

Drs. Paul Acton, Flemming Forsberg, Eric Gingold, Song Lai, Ji-Bin Liu, Laurence Parker, Mathew Thakur, Shaoxiong Zhang

**DEPARTMENT OF RADIOLOGY
HOUSESTAFF ROSTER
2006-2007**

RESIDENTS

FIRST YEAR RESIDENTS

Adeel Hasan Azam, M.D.
Susan Cha, M.D.
Michael J. Gould, M.D.
Elizabeth P. Ives, M.D.
Njogu J. Njuguna, M.D.
Marzban Rad, M.D.
Paul J. Read, M.D.
Sara E. Brooks-Sienkiewicz, M.D.

THIRD YEAR RESIDENTS

Nitesh Bhagat, M.D.
Garen Boghosian, M.D.
Rashi I. Mehta, M.D.
Ketan Naran, M.D.
Neeta Rao, M.D.
Sudhir Vora, M.D.
Peter Wahba, M.D.

SECOND YEAR RESIDENTS

Amy Austin, M.D.
Luis Beltran, M.D.
Suzanne S. Long, M.D.
Kristen E. McClure, M.D.
Ami Modi, M.D.
Jason H. Neustadter, M.D.
Nirav Patel, M.D.
Tamara Ann Trella, M.D.
Chun Wang, M.D.

FOURTH YEAR RESIDENTS

Joseph O. DeJesus, M.D.
Michael V. Dutka, M.D.
Alan R. Hammond, M.D.
Hilary M. Hochberg, M.D.
Bradley G. Leypold, M.D.
Susan Sung, M.D.
John D. York, M.D.

Nuclear Medicine

Mona Preeti Natwa, M.D.
Ronald B. Goodwich, M.D.

FELLOWS

ABDOMINAL IMAGING

Pauline Germaine, D.O.
Jeffrey Gramp, M.D.
Joseph D. Marko, M.D.
Anant Chimanlal Patel, M.D.
Mimi Huynh Pinto, D.O.
Myron Y. Prawak, D.O.
Tara L. Sagebiel, M.D.
Joseph C. Schmidt, D.O.

BODY MRI

Yuliya Lakhman, M.D.

BODY/NEURO MRI

Ronald J. Dolin, M.D.
Laura B. Klein, M.D. (thru 09/30/06)
James A. Pellegrini, M.D.
Krishna D. Thirumala, M.D.
Anuj J. Tolia, M.D.

BREAST IMAGING

Sun Ju Kim, M.D. (thru 09/20/06)
Dayna Levin, M.D.

CARDIOTHORACIC IMAGING

Muthuvelu Manoharan, M.D.

CARDIOVASCULAR/INTERVENTIONAL

Suken Shah, M.D. (thru 08/18/06)
Meguru Watanabe, M.D.

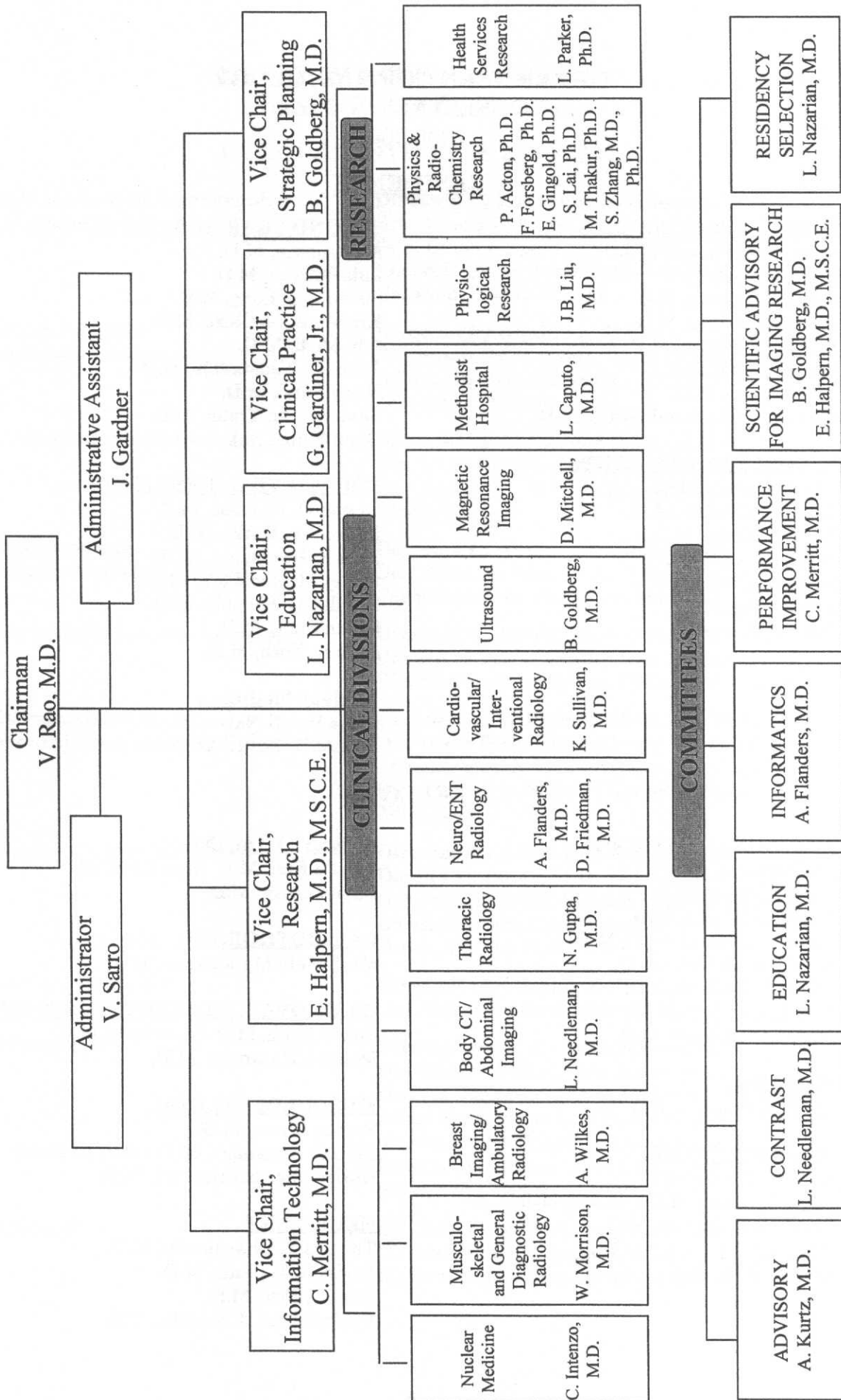
MUSCULOSKELETAL

Sachin Dheer, M.D.
Eoin C. Kavanagh, M.D. (thru 10/13/06)
Christopher Kirkpatrick, M.D.

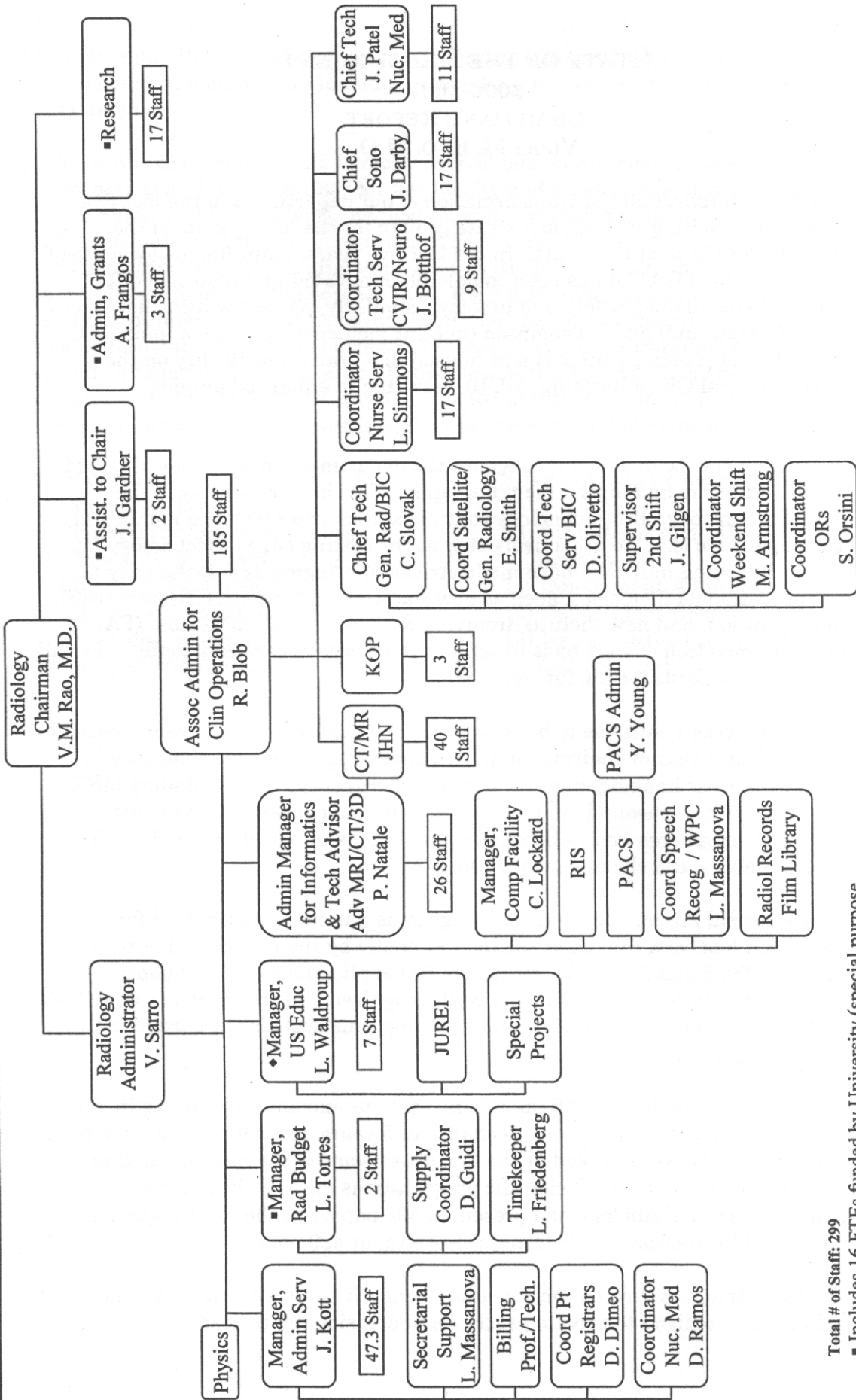
NEURO/ENT

Thomas Y. Chayapruks, M.D.
Reginald J. Denis, M.D.
John D. Fiss, M.D.
Venkatensha J. Kadaba, D.O.

Department of Radiology (2006-2007)



Department of Radiology Administration



Total # of Staff: 299

■ Includes 16 FTEs funded by University (special purpose, overage, and college)

◆ Includes 8 FTEs funded by Hospital special purpose account

STATE OF THE DEPARTMENT
2006-2007
CHAIRMAN'S REPORT
VIJAY M. RAO, M.D.

It is gratifying to reflect on the transformation of our department in the last five years. It is also exciting to develop a strategic plan for the future state of the department over the next five years. In the last five years, main Radiology space of our department on 3 Gibbon has been completely renovated and redesigned for enhanced patient comfort, safety and privacy. Similarly, patient waiting areas on 7 Thompson (ultrasound) and 8 Thompson (nuclear medicine) have been improved. Diagnostic breast imaging center is now housed in a brand new facility on the 4th floor of the Medical Office Building (MOB), resulting in enhanced patient satisfaction.

New technology has been added throughout the department in the areas of CT, MRI, US, SPECT scanning and digital mammography. This has brought us to the forefront of technology. But technology continues to improve by leaps and bounds and it is imperative that we proactively stay at the cutting edge of technology by continually investing in it. We have made strides in bringing new technology to enhance operational efficiencies, such as new Radiology Information System (RIS), speech recognition, and new Picture Archiving & Communication System (PACS). However, optimization of such tools to achieve the desired operational efficiency will continue to be the focus for the future.

Our clinical practice continues to be strong. Our clinical revenues have increased by 24% since my first year of chairmanship. We have unique strengths not only in advanced diagnostic imaging, but also in many therapeutic areas including MSK interventions with ultrasound guidance, interventional cancer therapy using radioactive microspheres and radiofrequency ablations under ultrasound or CT guidance, immuno- and chemo-embolizations.

In the educational arena, our residency program is nationally recognized for excellence and has been ranked at the top nationally by the American Board of Radiology for 2005 and 2006. We get nearly 500 applications for 8 residency positions. Our fellowship programs are well recognized and competitive. Our CME courses continue to be very popular, and new programs such as the cardiac training course have enjoyed great success.

In the research arena, it is gratifying to note that our extramural funding increased by 103%, compared to my first year as chairman 5 years ago. Our publication record remains strong. We were ranked at the top, above some of the most prestigious institutions, for the number of scientific presentations made at RSNA over the past ten years. Jefferson Radiology had presented 503 papers at the RSNA over ten years followed by Massachusetts General Hospital at 429 papers.

Faculty recruitment and retention remains strong. It is not surprising we have lost several faculty members to private practice and occasionally to academic

departments. But we have successfully recruited 18 faculty members (14 MDs and 4 PhDs) over the past 5 years including 4 faculty members who had previously left the department.

I would like to extend thanks to many individuals for our continued success. Thanks to my assistant JoAnn Gardner for her loyalty and outstanding assistance and Victor Sarro for his hard work, dedication and invaluable assistance in management of the business aspects and operations of radiology. Thanks to Andrea Frangos for her dedication and outstanding assistance in compiling this report. I am pleased to acknowledge all of our division heads for their leadership in furthering the department mission. Thanks to the faculty for their commitment, dedication and good citizenship. New technological advances in programs in radiology continue to keep us intellectually stimulated. Reflections of the key events of the past year and upcoming planned initiatives reveal a promising future for the department. This report will address the big events of the past year in the following areas:

- 1) Department Organization
- 2) Clinical Activities
- 3) Planned New Clinical Programs
- 4) Clinical Weaknesses
- 5) Clinical Informatics
- 6) Educational Programs
- 7) Research Accomplishments
- 8) Research Weaknesses
- 9) Opportunities for Extramural Funding
- 10) Affiliations and Interdepartmental Activities
- 11) Department Administration
- 12) Department Goals
- 13) Issues for the College, University and Hospital

DEPARTMENT ORGANIZATION

The senior leadership team underwent reorganization. Dr. Geoffrey A. Gardiner, Jr. was recruited as Vice Chair for Clinical Practice. Dr. Chris Merritt was appointed as Vice Chair of QA and Performance Improvement. Dr. Adam Flanders was appointed Director of Radiology IT. Dr. Barbara Cavanaugh joined our faculty as Director of Breast Imaging in June 2007.

CLINICAL ACTIVITIES

The past year was a strong year, with the results of the hard work and dedication of the department continuing to show results. Our clinical practice experienced a 4.8% growth in the total procedure volume in FY'07 compared with FY'06. Total work RVU's were 14.0% higher reflecting the increasing complexity of the caseload. Our outpatient imaging center, a joint venture with TJUH had another successful year with 31,093 procedures being performed, representing a 20.4% growth compared with last year. The center continues to be well-managed by Outpatient Imaging Affiliates, LLC, with their aggressive marketing efforts producing positive results.

In 2006-2007, a new CT scanner was installed in the Emergency Department with coverage 7 days a week, reducing waiting time for emergency room patients. In a limited manner, **body CT** began to offer a chest pain protocol for Emergency Department patients. The exam is a triple rule-out study that evaluates the coronary arteries, pulmonary arteries, and aorta for stenoses, embolism and dissection, while also evaluating the lungs for pulmonary disease. Additionally for cardiovascular disease, the **cardiothoracic division** evaluates anatomical and functional imaging with

cardiac CT angiography. 3-dimensional and multiplanar (sagittal, coronal and curved) reconstructed CT images continue to provide opportunities for non-invasive alternatives, such as virtual bronchoscopy and virtual colonography. Fusion of images with PET/CT has offer another technique to guide thoracic biopsies.

In **CVIR**, we have begun treating patients with hepatic malignancies with drug eluting beads. These embolic spheres release chemotherapeutic agents into the liver over a more extended period of time compared to the currently used material (ethiodol), and lead to lower systemic levels of chemotherapy. This will hopefully lead to lower complication and higher response rates. Additionally, in conjunction with the **nuclear medicine division**, Yttrium-90 radiolabeled microspheres have begun to be used for the treatment of patients with hepatic malignancy. The largest group treated to date is patients with uveal melanoma metastatic to liver. Since primary uveal melanoma sites respond well to high dose brachytherapy when radioactive plaques are placed adjacent to the tumor on the eye, there is reason to believe this method will prove successful in the liver. Selected patients who fail chemoembolization are offered this therapy.

In **nuclear medicine**, the Philips Forte large-field-of-view dual-headed SPECT camera with attenuation correction was acquired. The camera is used primarily for either SPECT or whole body imaging that requires a large-field-of-view and has a state-of-the-art attenuation correction software program, which is useful in stress myocardial perfusion imaging of obese patients. The PET Center is a participant in the National Oncologic Patient Registry (NOPR), a data gathering program sponsored by the American College of Radiology and the

Academy of Molecular Imaging. In this program, the Center for Medicare and Medicaid Services provide reimbursement for PET scans in patients with malignancies that are not currently covered by Medicare. This data collection includes the clinicians input both before and after the PET scan, so that the impact by PET scanning on patient management is evaluated; the ultimate goal would be approval by CMS for Medicare to permit reimbursement for those malignancies evaluated. As a part of the program, we have been collecting data on pancreatic and gynecological malignancies.

Positive impact continues to be seen from the MR scanners installed in 2005-2006, with reduced wait time for inpatient exams, cardiac MR imaging in the **body MRI division** and functional MRI in the **neuroradiology / head and neck radiology division**. The MR systems also serve to enhance our breast MR imaging program in the **breast imaging division** which is now located in newly renovated space designated as the Jefferson-Honickman Breast Imaging on the fourth floor of the Main Office Building.

The **musculoskeletal and general radiology division** continues to be the only musculoskeletal division in the country that serves as consultant for all four major sports teams in the city – Philadelphia Eagles, Phillies, Flyers and Sixers. The clinical programs have been expanded to include comprehensive imaging protocols for athletic pubalgia using sensorcaine-arthrography with a specially designed MR imaging protocol. The program has attracted significant numbers of referrals from Hahnemann University's Dr. William Myers, a national expert on athletic pubalgia.

Six new state-of-the-art scanning systems have been added in the **ultrasound**

division. The clinical service added in 2005 to provide one full day of thyroid biopsies per month to reduce waiting time for an appointment has been so successful that one additional day per month is being added to the schedule. The diagnostic and therapeutic musculoskeletal ultrasound imaging program has not yet reached its full potential and we are cross-training radiologists and increasing the appointment times offered to meet community needs in this area. Our musculoskeletal ultrasound service is now one of the largest in the country.

The pediatric radiology practice at **A.I. duPont** remains healthy with over 72,000 procedures performed annually. A.I. duPont is in the process of searching for a new head of Radiology.

SATELLITE CENTERS

In the mid 90's, imaging centers proliferated resulting in a dramatic shift of outpatient imaging to such centers away from the hospitals. Our department contracted with several outside centers to provide professional services.

Although our satellite center continues to be an important part of our clinical practice, imaging centers are taking major financial hits from reimbursement cuts due to enactment of the Deficit Reduction Act (DRA) 2005. Many imaging centers are closing including two centers that we have provided services for several years. Bala MRI closed doors in May 2006 and Academy Imaging has been scaling back gradually with the intent to close doors in December 2007. Langhorne center, managed by InSight Health, converted to a full modality center as mandated by IBC, and is slowly ramping up but is facing intense competition in the area.

RAD CONSULT

Imaging utilization nationally is in the crosshairs of the Center for Medicare and Medicaid services and other payors because of skyrocketing costs of imaging. Payors are now contracting with Radiology utilization management firms to develop guidelines for clinical indications and appropriate utilization of high end imaging studies such as CT, MRI and PET. HealthHelp is one such organization. This past year, we as the first academic department in the country, have contracted with HealthHelp to participate in their RadConsult Program. We recruited an outstanding program manager, Nancy Smith, to implement this program. She has done a yeoman's job indeed. We provide peer-to-peer consultation to the referring physicians, review clinical indications for CT, CTA, MRI, MRA and PET using guidelines developed by HealthHelp to determine the appropriateness of the requested study.

DEPARTMENT DASHBOARD

Performance metrics are monitored and trended in three main areas: faculty performance, clinical operation performance and financial performance. Faculty performance metrics include clinical productivity measured by work RVU's, examination volume, report turnaround time, and academic productivity. Work RVU's for clinical faculty are above the national median for academic radiologists as determined by the MGMA. Academic productivity includes peer-reviewed publications, funded grants, grant applications submitted, books, book chapters, published abstracts, invited lectures, regional and international presentations. Faculty engage in one-on-one teaching activity on a daily basis, which is difficult to quantify. However, residents' evaluations of faculty effort and quality

are given serious consideration. For clinical operations, performance metrics monitored include patient access, time lag between order of study to completion of study, patient satisfaction surveys, and referring physician satisfaction.

PLANNED NEW CLINICAL FACILITIES AND PROGRAMS

With continued upgrades to state-of-the-art imaging equipment, improved current clinical programs and exciting new clinical services can be offered to the Jefferson community. The new 3.0 Tesla MRI scanner placed at the Jefferson Hospital for Neuroscience will result in increased volume of MR examinations, including advanced MR imaging techniques. In **body MRI**, upgrades of the software on the MR units on 3 Gibbon should improve body MR, cardiac MR and body MRA services.

In the **musculoskeletal and general diagnostic radiology division**, an ONI extremity magnet will be placed in JCCI and will provide a much needed service to the Jefferson community including evaluation of hand disorders. Services at the Langhorne site will continue to be expanded with new programs offered possibly including spine injection procedures and musculoskeletal ultrasound in conjunction with the **ultrasound division**.

The department will continue to expand in therapeutic areas with the **interventional radiology division** planning to expand their successful radioactive microsphere treatment program to more patients with hepatocellular carcinoma. The **cardiothoracic radiology division** will provide radiofrequency ablation of primary lung tumors that are unresectable tumors, as well as in patients with comorbidities for whom

surgical resection is contraindicated. The division will collaborate with the **body CT** and **body MR divisions** to expand the noninvasive cardiac imaging services including CT angiography and MRI for stress and rest perfusion studies, scar imaging, and evaluation of complex cardiac anomalies and phase studies.

At the **breast imaging center**, the breast cancer program expansion will continue with support through fundraising to improve the screening center, improve patient flow and provide a more pleasant environment for patients.

In body CT ablation services will be expanded to include lung masses and bone metastases, and increase the number of liver and kidney ablations performed. We hope to acquire one of the prototype microwave ablation system with Jefferson serving as a beta site. With the addition of this system, the **Department of Radiology** would have all of the major modalities for in situ ablation: cryo-, radiofrequency, and microwave-ablation.

CLINICAL WEAKNESSES

We faced several challenges in our clinical operation. Our outpatient MR scanners in the Clinical Office Building remain outdated and continue to limit many of our clinical and research capabilities. Related to this issue is that of inadequate technologist training. As advanced technologies are implemented, imaging protocols become more complex and training becomes imperative to maintain high quality imaging. Image processing needs to be improved in order to demonstrate images in an optimal manner. Technologists need to be provided training to become superusers. There are also information technology issues such as difficulty in filtering undictated cases and restoring prior exams, which results in significant delays

in providing timely reports. For CT imaging, the rapid growth in our clinical service has led to less time consulting with referring physicians about imaging results, patient outcomes, and appropriate ordering.

Lack of space remains a limitation for many areas of the department. Nuclear medicine has inadequate space for inpatients with no inpatient waiting area, resulting in inpatients in wheelchairs and stretchers held in the hallways or around the reception desk. This is a particular problem for the cardiac inpatients, whose stretchers span the hallway of 8 Thompson. This area is in dire need of facility expansion to improve the patient's experience, thereby maintaining the strong outpatient practice in this hospital setting. Additionally, interventional radiology services cannot be maximally expanded, as there is lack of adequate outpatient clinic space. Space needs to be made to provide comprehensive divisional services in one area. A lack of an appropriate marketing by TJUH has prevented us from being competitive in promoting and expanding new clinical services.

CLINICAL INFORMATICS

The IT Division of the Department of Radiology continues to expand its support of the clinical mission of the department. In addition, the Division sees itself as a resource for the entire Jefferson Healthcare system, contributing to the needs of patients and clinicians.

The majority of the academic year focused on one of our most extensive IT projects to date; the staging, installation and deployment of our new Picture Archiving and Communication System (PACS) and Enterprise Imaging Distribution System. This huge endeavor required close coordination and cooperation from multiple stakeholders outside of the Department of Radiology including TJU

Hospital IS, Jefferson IT, the TJUH Clinical Informatics Committee (CIC), the Methodist Hospital Radiology Group, the Methodist Hospital IS Group and Administration.

The new Philips iSite PACS is vastly more complex technologically than our current legacy Canon and AGFA PACS systems. Unlike our current disparate PACS and Enterprise image distribution systems all imaging is consolidated into a single system and imaging is now tightly integrated into our imaging workflow engine provided through our Radiology Information System (RIS). All TJUH and Methodist Hospital imaging studies will be stored and served through this new system. The redundant server architecture is capable of consolidating and storing our over 350,000+ examinations per year with high availability and failover capacity. Imaging data is permanently archived off-site for safety, and all imaging studies that are added to the system are *always available*. Radiologists and clinicians will now access *the same data repository*. Since this new PACS is tightly integrated to our RIS and Speech Recognition System (SR), the new enterprise system will display a comprehensive image history timeline that links to all prior radiology reports and prospective imaging studies.

Since the TJUH Department of Radiology has a decade of previous PACS experience, the process of migrating to an entirely new PACS architecture required a significant amount of additional planning, internal development, training and testing. Moreover, the Radiology IT Group needed to develop a solution that would allow us to continue to work in our existing legacy PACS environment without interruption to Radiology clinical

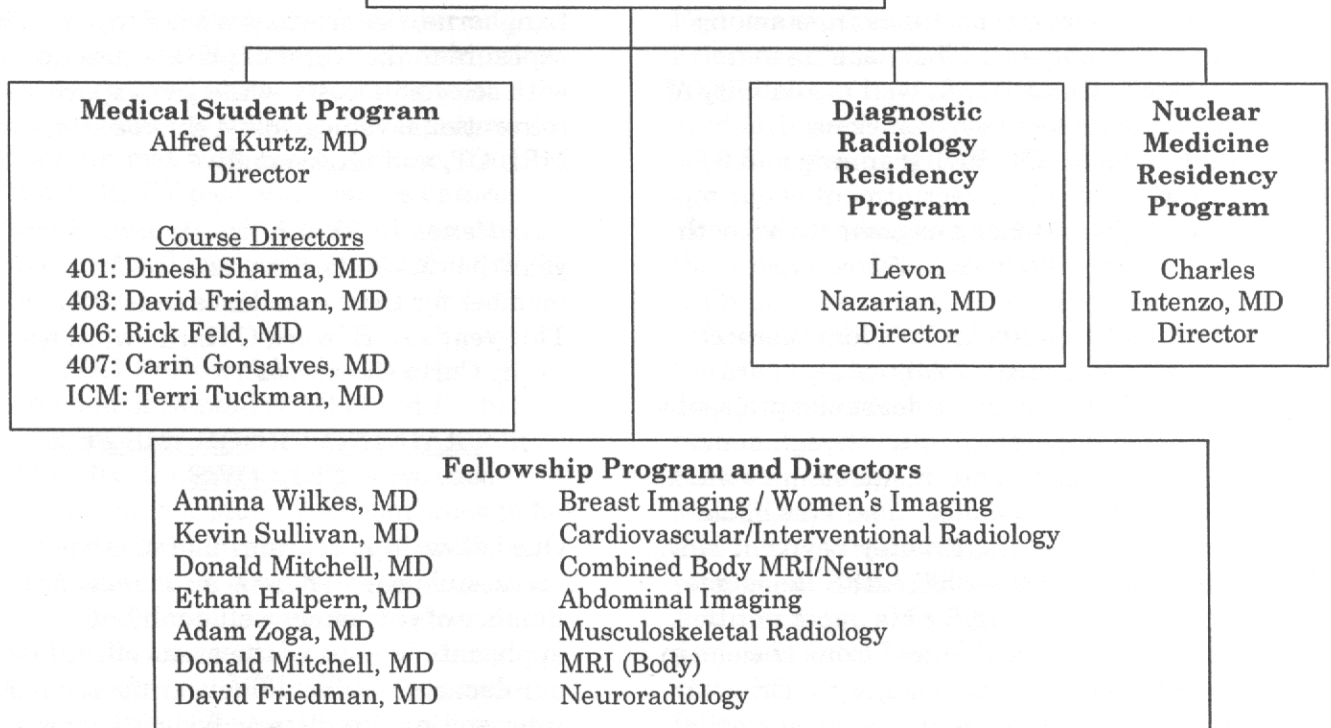
service or clinician access to imaging studies. This required creation of a complex redundant data transfer process that allowed us to replicate images simultaneously on three disparate PACS systems and the existing Stentor iSite Enterprise Image Distribution system. Also, the Radiology IT Development Group had to create a custom engine to migrate required historical imaging studies from the now expansive legacy archive to the new PACS system without creating inordinate delays in delivery of clinical services.

With existing clinical services intact, the IT team turned to the deployment of hundreds of new registrar, technologist and Radiologist workstations. This required establishment of training and testing procedures for an entirely new image workflow process that provides greater quality control of imaging studies from the initiation of an order to completion of a finalized report. Hundreds of individuals within the Department of Radiology were trained to interact with the new system, role-based core competencies were developed and validated, and finally, the internal transition process to the new PACS began in Spring 2007.

Throughout the upcoming summer months in FY'08, the Department of Radiology will quietly transition to the new PACS system while systematically retiring unnecessary legacy components of the old systems. In the fall of FY'08, in cooperation with Hospital IS and Jeff IT, we will transition to the new feature-rich Enterprise Imaging application. Clinicians will experience a richer level of interactivity, a greater level of access and tighter integration to image workflow.

EDUCATIONAL PROGRAMS

RADIOLOGY EDUCATION



RESIDENCY TRAINING PROGRAM

The educational programs at Thomas Jefferson University Hospital continue to be one of the major strengths of our department. In February and March of 2007, the residency and fellowship programs were site visited by the ACGME, and the site visitor was continually impressed by the quality of our programs.

The Radiology residency program is nationally recognized as one of the top programs in the country. In fact, for the third consecutive year the residency program was recently ranked number 1 out of 187 programs in the country by the American Board of Radiology based on 5-year cumulative performance on the oral board examination. This is indeed a major accomplishment and a tribute to our faculty who remain committed to a

high caliber of teaching in spite of faculty shortages and increased clinical workload and to the outstanding leadership provided by our residency program director and Vice Chair for Education, Levon Nazarian, M.D. The goal of our residency program is to produce quality radiologists well trained in all aspects of diagnostic radiology.

Upon finishing their training, our residents will be competent to pursue a career in either an academic or private practice environment. All seven of our senior residents passed both the written and the oral portions of the American Board of Radiology Examination. We have a reputation for the highest caliber fellowship programs and we are extremely pleased that this year six out of the seven have chosen to stay on at Jefferson for additional fellowship training.

Residency Selection: This year we received approximately 650 applications for eight positions and interviewed approximately 75 candidates. We matched all of our positions from among our top candidates. The teaching and research reputation, as well availability of cutting edge technology such as Multidetector CT, PET scanning and 3T MR was crucial for recruitment of our top candidates and made us competitive with other top institutions in the country.

Resident Research: Resident research is actively encouraged. All residents are required to complete at least one project by the end of their third year, though many do more. Many of our residents presented papers at national meetings. One of our graduating seniors, Bradley Leypold, M.D., PhD., received the 2007 ARRS Residents in Radiology Award for his paper entitled, "Early Evolution of Spinal Cord Lesions in Traumatic Spinal Cord Injury". Dr. Leypold was also nominated by our department to receive the RSNA Research and Education Foundation Roentgen Resident Research Award which was presented to him at graduation. Another resident, Dr. Luis Beltran participated in the RSNA/ARRS/AUR Introduction to Research Program.

Clinical Training: Residents receive extensive clinical training in all areas of diagnostic Radiology. Clinical rotations are in compliance with guidelines required by the ACGME and/or recommended by the Association of Program Directors in Radiology (APDR). Almost all training takes place on the Jefferson campus. Residents get an outstanding education spending a total of 3 months at A.I. duPont. This rotation enhances the educational experience in pediatric radiology. The addition of cutting edge multidetector CT scanners, an on campus PET/CT scanner and continued upgrades to existing MRI and

Ultrasound units combined with the subspecialty expertise of our faculty ensure up-to-date experience for our residents and fellows. Our outpatient facility in Langhorne, PA provides a brief two month exposure to the world of private practice with selected faculty while participating in conventional radiography, fluoroscopy, MRI, CT, and ultrasound.

Excellence in Teaching Award: Every year the residents recognize one faculty member for their excellence in teaching. This year's A. Edward O'Hara award went to Dr. Carin Gonsalves.

TRAINING PROGRAMS FOR FELLOWS

Our fellowship programs had another successful year. There is an increasing number of extremely well qualified applicants in most of the areas offered by our department including: cardiovascular/interventional radiology, body MRI, breast imaging, combined body and neuro MRI, neuroradiology/ENT, US/CT/MRI, and musculoskeletal radiology. All of the above programs received very positive year-end critiques from the graduating fellows.

The **Abdominal Imaging Fellowship** is coordinated by Dr. Ethan Halpern with Dr. Anna Lev-Toaff responsible for the fellow selection process. Fellows are trained in advanced, multi-modality imaging of the abdomen and pelvis, including sonohysterography, virtual colonoscopy, and CT/MR urography while continuing to receive training in chest imaging (including cardiac imaging). There is one month of elective time available for additional training in abdominal imaging or training in extra-abdominal cross-sectional work. The program offers seven positions each year.

The **Vascular and Interventional Fellowship**, under the direction of Kevin

Sullivan, M.D., is an ACGME accredited one year program. In addition, we recently started a DIRECT pathway program, which is a 4 year combined Radiology residency and Vascular and Interventional Radiology Fellowship that can be entered after completing two clinical years of training. This program has been met with great interest. Our first DIRECT pathway trainee entered the program in July, 2006, and we have already filled our positions for 2007, 2008, and 2009.

The **MRI Fellowships**, under the direction of Donald Mitchell, M.D., have remained popular because of the quality of faculty, the large and diverse case volume, and because MRI continues to be of the most rapidly expanding areas of clinical practice. One fellowship position has been offered in body/musculoskeletal MRI and four positions in neuro/body/musculoskeletal MRI. These positions have all been filled with top candidates.

The **Musculoskeletal Fellowship program**, under the direction of Adam Zoga, M.D., graduated two strong fellows including Sachin Dheer, a former Jefferson resident who accepted an academic position at Christiana Medical Center in Delaware and Christopher Kirkpatrick who has taken a private practice position in his home town in Bucks County, PA. This was a very strong clinical duo with academic productivity as well. Both fellows presented scientific papers at the American Roentgen Ray Society annual meeting this year, and Sachin has two original papers currently in peer review.

The musculoskeletal fellowship positions remain highly coveted as we received more than 50 applications for the 2008-2009 positions. From that group, we interviewed 12 candidates and received acceptances from our top two choices,

Ketan Naran from Jefferson and George Hobbs from the University of Texas.

The **Neuroradiology/ENT Radiology Fellowship**, under the direction of David Friedman, M.D., filled four positions for 2007-2008 through the NRMP match. The four graduating fellows obtained excellent job opportunities in private practice.

The **Breast Imaging Fellowship**, under the direction of Annina Wilkes, M.D., offers training in screening and diagnostic mammography, breast ultrasound, breast MRI, and image guided percutaneous needle localization and biopsy using mammography, ultrasound and MRI. Fellows participate in twice monthly Multidisciplinary Breast Cancer Conference and they are responsible for several resident and medical student conferences. Additionally, participation in a research project is encouraged. Dayna Levin, M.D. stayed on this year to be the breast imaging fellow.

Our visiting fellowships remain very popular in the various subspecialty areas; these programs allow practicing radiologists to learn new techniques and sharpen their traditional skills. Because of our international reputation, several physicians from overseas have chosen to pursue their research theses in our department in the divisions of MRI, Neuroradiology/ENT, Ultrasound, etc.

TEACHING PROGRAMS FOR MEDICAL STUDENTS

I am pleased that radiology continues to be included in the core curriculum for sophomore students with Dr. Alfred Kurtz acting as the Director of Medical Student Education for the Department of Radiology. I wish to thank Terri Tuckman, M.D. and Oksana Baltarowich, M.D. who willingly contributed their time to this important teaching exercise for Jefferson medical

students. The radiology topics presented were Women's Imaging and Abdominal Imaging.

The junior and senior students can choose to attend one or more of the four separate electives offered by our department, which include general Radiology, CVIR, Neuroradiology, and Cross-Sectional Radiology. The radiology electives remain quite popular and were completed by 146 members of the senior class, either here or at an outside institution. Our radiology elective courses are also popular with medical students from other institutions, with 9 students in attendance this year.

The neuroradiology elective was completed by 7 senior medical students. Electives in cross-sectional imaging and CVIR were completed by 10 and 10 students respectively. All of these courses received rave reviews from the students. I wish to thank all the course coordinators for a fine job – Dinesh Sharma, M.D. for general radiology, David Friedman, M.D. for neuroradiology, Rick Feld, M.D. for cross-sectional imaging and Carin Gonsalves, M.D. for CVIR.

CONTINUING MEDICAL EDUCATION PROGRAMS

In spite of all the added pressures of increasing clinical responsibilities, our faculty devote an enormous amount of energy and time to educational activities.

Division of Musculoskeletal and General Radiology: The Jefferson Lower Extremity Advanced Imaging Symposium, directed by Adam Zoga, M.D., was held in October 2006 with 105 attendees. The Jefferson Musculoskeletal Imaging Symposium held in June 2007 was directed by Dr. Angela Gopez with 134 attendees.

Radiology Grand Rounds and Radiology Research Conferences:

Twenty weekly conferences were held during the 2006-2007 in Radiology, alternating between Grand Rounds, Radiology Research Conferences and Journal Clubs. Grand Round speakers covered a wide range of interesting topics in all areas of radiology. The Radiology Research Conferences allowed faculty, residents, and fellows in the department the opportunity to present the results of their research activities. Additionally, after each presentation, a discussion of the study design and methodology provided a useful learning session for all.

Jefferson Ultrasound Research and Education Institute (JUREI): The Jefferson Ultrasound Research and Education Institute, under the leadership of Barry B. Goldberg, M.D., continued its educational programs with more than 40 courses offered in all aspects of ultrasound. The annual Leading Edge meeting, which was held at the Borgata Casino Resort in Atlantic City, was a success with attendance of greater than 1,300 people. The program was supported by a wide variety of exhibitors and there were lecturers from this country and abroad providing symposia on Ob/Gyn, vascular ultrasound, ultrasound physics, sonomammography, pediatric ultrasound, musculoskeletal imaging, and a symposium on ultrasound contrast agents.

Educational activities of the division will continue in the coming year to support the training of medical students, residents, and fellows under the leadership of various members of the staff. A series of conferences in all aspects of ultrasound have been arranged for fellows and residents similar to the past year. Our programs for physicians and paramedical personnel, as well as scientists from around the world continue.

The RSNA Research & Education Foundation grant "Teach the Teachers

Initiative for Ultrasound Training in Latin America,” received a one year extension in order to complete the objectives of the grant. During this time period, JUREI faculty and staff will visit the seven newly formed affiliate ultrasound education centers to ensure they meet JUREI standards as teaching facilities. This program will be completed by June 30, 2008. The new centers are located in Tegucigalpa, Honduras; Bridgetown, Barbados; Guatemala City, Guatemala; Managua, Nicaragua; La Paz, Bolivia; San Jose, Costa Rica and Maracaibo, Venezuela.

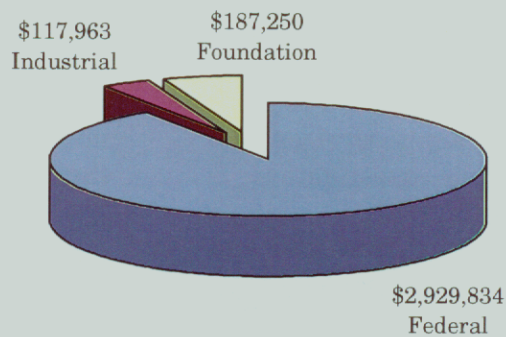
These seven new centers are in addition to the sixty-five previously established centers. In addition, JUREI is in the process of finalizing the acceptance of centers in Mexico City, Mexico and New Delhi, India. These centers further JUREI’s goal of helping developing

and emerging nations provide quality ultrasound education in their countries

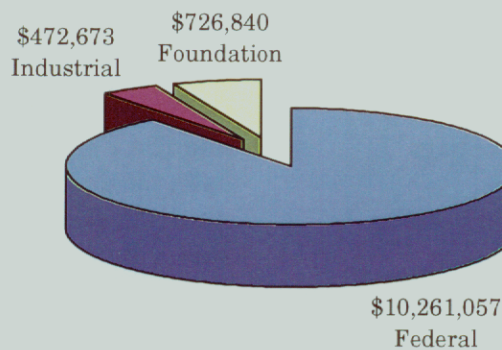
Cardiac CT Training Program: Our department continues to offer a training program in cardiac CT directed by Ethan Halpern, M.D., which includes quarterly didactic courses in addition to weekly hands-on training sessions in coronary CT angiography. The quarterly courses are taught by Drs. Ethan Halpern, David Levin and Eric Gingold and provide information needed for coronary CT angiography as well as evaluation of cardiac function and assessment of cardiac valves. The hands-on sessions are held in conjunction with the regular cardiac CT schedule so that participants are able to observe and participate in the performance and interpretation of clinical cases. These courses have been popular with both radiologists and cardiologists.

RESEARCH ACCOMPLISHMENTS

2006-2007 Fiscal Year Funding



Total Funding (all budget years)



Although the demands of clinical activities continue to increase, as indicated in our clinical productivity, the department's research productivity remained strong and actually showed an increase in funding. There were 31 NIH or other federal grants active during the year, in addition to 3 foundation or medical society grants, and another 11 industrial grants. As a group, these grants brought in total current year funding of \$3,235,047, including \$2,555,091 in direct support and \$679,956 in indirect. This represents a 103% increase compared to my first year as chair 5 years ago. We had 220 publications in the medical literature (including journal articles, books and book chapters, and published abstracts) over the past fiscal year. Dr. Adam Zoga was awarded the annual Judy Dubbs Memorial Research Award, in recognition of his efforts in research.

The Jefferson Molecular and Biomedical Imaging Core Facility, under the direction of Mathew Thakur, Ph.D., has had another productive year continuing to expand its role in pre-clinical research on campus. This year, the facility provided imaging services for nine NIH funded campus investigators across five departments. With Neurosciences' Dr. Iacovitti, new PET and SPECT imaging agents have been evaluated to assess severity and regression of Parkinson's disease in a rat model using stem cell therapies. In Biochemistry and Molecular Pharmacology, FDG PET was used to quantify lung tumor burden in a mouse model with Dr. Waldman. FDG PET was used to quantify glucose metabolism differences across various anti-angiogenesis therapies with Dr Iozzo in Pathology. Radiology's Dr. Thakur continues to characterize and validate novel oncogene expression imaging

agents. CT imaging was an integral part of all protocols.

Zixiong Cao PhD, a Biomedical engineer in the Department of Radiology, has been working closely with the small animal imaging group. He is funded through grants to improve pinhole SPECT imaging where he is using complex physics simulation engines to optimize multiple pinhole designs for specific imaging applications. He has also become more involved in helping to define and execute imaging studies.

Imaging data from the lab has been in numerous publications and presentations this year pertaining to both the science and application of molecular imaging. Enhanced funding to promote the molecular imaging facility has been pursued. A revised application was submitted for a NIH shared instrumentation grant to obtain a next generation microPET better suited for neurological imaging mice. The increasing utilization and helpful results obtained have prompted the KCC advisory committee to include this facility as a part of the KCC core grant now under the review by NIH. It is hoped that this will bring further exposure of the facility to KCC members.

The MR physics program, under the leadership of Song Lai, Ph.D., continued to investigate novel MR imaging techniques that provide a new, non-invasive approach to evaluate normal and diseased brain characteristics and functioning. Working with the Departments of Neurosurgery, Neurology, and the Farber Institute, the program has been productive in the investigation of multiple sclerosis, epilepsy, and brain tumor imaging.

Our division of **diagnostic ultrasound**, under the leadership of Dr. Barry

Goldberg, continued to be highly productive. A variety of basic science, animal, and clinical research were underway for the development and evaluation of ultrasound contrast agents and novel imaging techniques to improve the detection of diseases. Dr. Ji-Bin Liu completed his work on his NIH grant that assessed the utility of contrast enhanced monitoring of prostate RF ablations. Dr. Goldberg continued his NIH-funded investigation into the use of ultrasound contrast agents for imaging lymphatic channels and sentinel lymph nodes in a swine model. A five-year NCI grant with Dr. Margaret Wheatley at Drexel University was awarded to develop novel ultrasound contrast agents. Dr. Flemming Forsberg received two grants to study subharmonic pressure estimation in the heart and portal vein with ultrasound imaging from the American Heart Association and NIH, respectively. Drs. Rick Feld and Ethan Halpern continued work on real-time elastography for imaging of thyroid and prostate lesions and Dr. Halpern began work on his NIH-funded clinical trial to evaluate prostate cancer detection with contrast-enhanced ultrasound following pretreatment with Dutasteride.

In **breast imaging**, the faculty continued their efforts on NCI funded cooperative group clinical trials to define the most effective modalities for breast cancer screening. Results from a multi-center study, with Dr. Vijay Rao serving as principal investigator at Jefferson, that examined the efficacy of contralateral breast MRI in women recently diagnosed with breast cancer were published in the *New England Journal of Medicine*. Dr. Merritt continued patient follow-up on a trial of the utilization of screening breast ultrasound in a high risk population.

In **nuclear medicine**, Dr. Thakur continued his study on the development of

probes for imaging oncogene expression, including his NIH-funded work to examine Cu-64 PET imaging of breast cancer and a current investigation of Cu-64 for prostate cancer imaging. Dr. Intenzo participated in two trials sponsored by the American College of Radiology Imaging Network that evaluated PET for assessment of response to therapy in nonsmall cell lung cancer and monitoring the therapeutic response of malignant gastrointestinal stromal tumors to Gleevec, a tyrosine kinase inhibitor. Dr. Intenzo and Kim published an article demonstrating PET findings in pulmonary lymphangitic carcinomas in *Clinical Nuclear Medicine*.

In **body MRI**, Dr. Mitchell began work with Dr. Navarro in Gastroenterology on an NIH grant that includes rapid MRI for noninvasive monitoring of fatty liver and mesenteric fat. Additionally, Dr. Mitchell serves as chair of the Gynecologic Disease Site Committee of the American College of Radiology Imaging Network cooperative group and is a member of the National Cancer Institute Gynecological Scientific Steering Committee.

In **neuroradiology/ head and neck radiology**, Dr. Flanders continued his work on two grants funded by the NIH for cross-institutional access to cancer imaging data and an integrated biomedical informatics infrastructure for cancer research imaging.

In **body CT**, Drs. Halpern, Levin, Gardiner and Zhang continued their investigation into coronary CT angiography to diagnose coronary disease and for surgical planning, with over 20 presentations given on the topic at national meetings. Dr. Lev-Toaff continued to evaluate the benefits of CT colonography.

In cardiovascular interventional radiology division, collaboration with Dr. Sato in medical oncology continued on his NIH funded trial of immunoembolization of uveal melanoma metastatic to liver. The division's accomplishments in this field have been recognized by invitations to present our work at both the Annual meeting of the Society of Interventional Radiology and the World Conference on Interventional Oncology.

Our **musculoskeletal group** continued to be productive in their research publications, describing imaging findings in athletic pubalgia, osteomyelitis, subchondral cysts, and vertebroplasty and musculoskeletal biopsy utilization. Dr. Morrison began a multicenter trial funded by the American College of Radiology Imaging Network to develop a standardized method of imaging osteoarthritis of the knee. Additionally, Dr. Morrison is serving as principal investigator at Jefferson for an NIH grant awarded to Drexel University to study the biomechanics of clubfoot deformity. Dr. Zoga's work in athletic pubalgia has been recognized with awards for best paper at the Society of Skeletal Radiology annual meeting and Cum Laude Award for educational exhibits at the Radiological Society of North America annual meeting.

Our **health services research** group (Dr. Levin, Dr. Parker, Andrea Frangos and I) continued to be highly productive in studying practice patterns and utilization trends in diagnostic imaging and interventions. We received continued funding from the American College of Radiology. Over the past year, our Center for Research on Utilization of Imaging Services (CRUISE) has had seven abstract published and 10 papers published. We expanded our work and began to examine patient level data with the hopes of securing additional grant funding. There is no doubt that this work

will further enhance the national reputation of our department.

RESEARCH WEAKNESSES

Although we managed to exceed our previous research success, proper research infrastructure (funds and personnel) is necessary to be successful in research today. Continued governmental budgetary restraints make obtaining federal support increasingly difficult, with the majority of projects requiring two or three resubmissions to be awarded funding, and funds, when awarded, to be cut drastically. There needs to be financial support to allow investigators to collect pilot data to be considered for funding, including support personnel to work on unfunded pilot clinical trials.

The department has been productive in clinical research, but the effort required for the new era of complex clinical trials are limited by the amount of time that can be committed by faculty. The clinical workload has been increasing, eroding the academic time to carry out research. The NIH and FDA are promoting the use of radiological endpoints for a wide range of clinical trials, such as oncology and neurology studies. Often the sponsors require complex image evaluations by radiologists, thereby adding research work on studies being conducted by investigators in other departments to our department's clinical workload. More financial support is required to increase the number of faculty members, thereby restoring time to perform our research and assist with the multitude of other studies being carried out at Jefferson.

Trained clinician-researchers are needed to attract both industrial and federal funding. Translational research is a major part of the new NIH roadmap and requires qualified, capable researchers to carry out this work. With an overall

shortage of radiologists nationwide, trained clinician-researchers are in great demand. In this competitive marketplace, we must be able to compete with other institutions to attract these specially trained clinician-researchers.

OPPORTUNITIES FOR EXTRAMURAL FUNDING

The department has 13 pending grant proposals, which are listed in Table 2 of the appendix. There are nine pending proposals for federal grants and/or subcontracts and four proposals to foundations and industry. The proposals cover a broad spectrum of radiology research. There are also over eight pending projects outside the department in which our faculty are listed as co-investigators. These are not listed in Table 2 as the principal investigators are faculty members from other TJU departments.

The American College of Radiology Imaging Network (ACRIN), an NCI funded cooperative group, remains a good source of extramural funding for the department. The department has been involved in eleven projects since the cooperative group's inception. There are additional projects, which are under development at ACRIN, which we hope to participate in. Additionally, ACRIN has recently been awarded a grant from the Pennsylvania Department of Health. We have already been awarded two of these projects and will be involved with at least one more pending project. While we will continue to pursue grant funds through the NIH and radiology foundations, many of which provide seed grants to gather pilot data for larger grant submissions, we also plan on pursuing funding from industry to sponsor our investigator initiated projects.

With the NIH and FDA promoting the use of radiological endpoints in clinical trials, and amount spent on imaging increasing drastically over the past decade, evaluation of new imaging technologies with outcome and cost-benefit analyses are areas of radiology research that need to be explored. Breast and prostate cancer detection and treatment remain areas of interest to funding agencies and sources of funding in these areas need be explored. Additionally, with the high costs of cardiovascular disease to insurers, coronary CT and cardiac MR have a lot of potential for research funding. Other avenues of funding and research support are partnerships with industry. Partnership are a rich source of financial support, but more importantly, allow us to serve as beta sites for equipment and bring attention to our research endeavors.

AFFILIATIONS AND INTERDEPARTMENTAL ACTIVITIES

Virtually every clinical department relies heavily on a strong radiology department to provide quality imaging for clinical care of patients as well as research. Joint endeavors between departments build on the strengths of both the departments to produce mutually beneficial programs.

Our physicians continue to work with faculty in other departments across Jefferson campus for both clinical and research endeavors. In body MR, collaborations with the gastroenterology, particularly in the area of hepatology, has led to several manuscripts in *Radiology*. Dr. Lev-Toaff continued her research and clinical endeavors with the Division of Gastroenterology utilizing virtual colonoscopy. Drs. Halpern, Mitchell, Gardiner, and Zhang have been working with cardiology in evaluating cardiac CT angiography and MR angiography. Dr. Halpern has also been collaborating with

the Emergency Department to create a protocol for acute chest pain with patients presenting with chest pain. Drs. Merritt and Needleman have been working with the Emergency Department on ways to improve emergency service using the Failure Mode and Effects Analysis (FMEA) model, for which Jefferson Radiology may be among the first radiology departments to use this model. Neuroradiologists continue to collaborate with researchers in the Departments of Otolaryngology, Neurosurgery, Orthopedic Surgery, Neurology, Rehabilitation Medicine, and the Farber Institute. Our physicians in CVIR continue their weekly multidisciplinary management conference and clinic in conjunction with Medical Oncology for the management of patients with uveal melanoma metastatic to liver, as well as have a monthly multidisciplinary management conference in conjunction with Hepatology, Transplant Surgery, and Medical Oncology for the management of patients with hepatocellular carcinoma. In musculoskeletal radiology, we are working closely with the Department of Orthopedic Surgery, Sports Medicine, Family Medicine, and Rheumatology on clinical and research projects including the shoulder, hip, foot, and spine imaging. Dr. Halpern continues his joint effort with the Department of Urology and the Jefferson Prostate Center. In breast imaging the new Jefferson Breast Care Center will help to develop collaborations with various members of the multidisciplinary team. In nuclear medicine we are currently involved in two ACRIN-RTOG jointly sponsored projects involving the evaluation of FDG-PET for assessment of response to therapy in nonsmall cell lung cancer and the use of FDG-PET in monitoring the therapeutic response of Gleevec for malignant gastrointestinal stromal tumors. Additionally, almost all of our divisions participate in multidisciplinary

conferences in many disciplines including chest, breast, gastroenterology, musculoskeletal, neurosciences and head and neck conferences.

The Department of Radiology's research collaborations also extend beyond Jefferson. Dr. Zoga worked with Dr. Meyers at Drexel to identify imaging findings of sports hernias and he now refers all his patients to TJU for imaging of this condition. Dr. Morrison worked with Dr. Siegler at Drexel University to evaluate clubfoot deformity. The ultrasound group continues to collaborate on several projects with investigators at the Drexel University. Additionally, we continue our close relationships with the engineering departments at both Drexel University and the University of Delaware for undergraduate and graduate training and research.

DEPARTMENT ADMINISTRATION

The administrative team lead by Victor Sarro has done an outstanding job of multitasking and managing a plethora of initiatives in the department this past year and deserves special recognition. However, it has become increasingly apparent how thin the administrative infrastructure is for the size of our operation and department. Implementation of the new Philips Stentor PACS as an enterprise wide initiative will require a lot of resources to ensure optimal training of users including technologists, radiologists, clinicians, house staff and nurses. Additional resources must be made available by TJUH for endeavors of this magnitude which are in progress.

DEPARTMENT GOALS

There are a number of important goals we plan to focus on in the coming year. **(1) Improving our operational efficiency**

– We need to better coordinate the technical and professional aspects of our informatics activities. I am not entirely satisfied with the way things have progressed this past year. We have to optimize and integrate the available tools and resources – such as PACS, RIS, HIS, and (in the near future) EMR. It is important to engage the technical team so as to improve access to and the technical quality of the studies, while at the same time decreasing “open table” time. Faculty must be encouraged to streamline protocols, improve turnaround time, and standardize reports. I want to empower division heads to take ownership of monitoring practice performance metrics, using things like electronic dashboards. We also need to improve our interactions with referring physicians so as to be able to better educate them about which imaging studies are the most appropriate, and to obtain better clinical information when studies are ordered. **(2) Help build our practice through better branding and marketing** – We have an outstanding radiology department that is profitable for the hospital. However, we need to convince them of the importance of marketing our services. We also need to greatly improve our department’s web site. I intend to recruit a professional webmaster to help us redesign our site so we can better communicate with Jefferson and outside physicians, as well as improve its content and timeliness. **(3) Expand our clinical programs on campus** – There are a number of areas of our practice that we plan to grow substantially in the near future. These include ultrasound-guided percutaneous musculoskeletal interventions, coronary CT angiography, cardiac MRI, percutaneous radiofrequency ablation of liver and other tumors, transcatheter selective embolization of tumors with radioactive particles, PET/CT, and breast MRI. Expansion in these areas will come as a result both of the development of new

imaging applications and the expertise and leadership of our faculty. **(4) Explore off-campus expansion opportunities** – In concert with the outreach strategy being developed by JUP, TJU, and TJUH, there are promising opportunities for us to enlarge our practice. These include Frankford Bucks Hospital, Methodist Hospital, and a possible new imaging center in the old Navy Yard area (probably done in conjunction with Methodist). We also plan to expand our facilities at JCCI. **(5) Enhance our educational programs** – We need to review and perhaps change our resident/fellow balance. We also need to consider changes in our residency rotations and on-call duties. The American Board of Radiology recently announced major changes that will take place in its certifying examinations starting with the class entering in 2010, and it is quite likely that there will be major changes in the structure of the residency program as well. We will start making plans to get ready for the transition. **(6) Enhance our research efforts** – We intend to expand our molecular imaging/translational research efforts and collaborate with other investigators in the basic science departments and the Kimmel Cancer Center. **(7) Expand our research collaboration with industry** – We have developed a strong research collaboration with Philips Medical Systems in recent years, and I am hopeful that we can expand this even further. For example, this spring we anticipate becoming a beta site for a new Philips prototype high speed multidetector CT scanner. We also want to expand our molecular imaging program. **(8) Pursue philanthropy** – We have identified a possible donor of a substantial sum to support research in our department. I hope to be able to finalize the arrangements before the end of CY 2007.

ISSUES FOR THE COLLEGE, UNIVERSITY AND HOSPITAL

Night/Weekend On-Call Coverage by Attending Radiologists. Suggestions have been made that we should have attending radiologists "in house" 24 hours a day, 7 days a week, so that final reports can be obtained immediately. This suggestion is neither feasible nor necessary. In academic radiology department like ours, every faculty member is highly subspecialized – people do only neuroradiology, or only mammography, or only chest radiology, etc. After practicing like this for a few years, we tend to lose our capabilities in other aspects of imaging outside our own individual areas of subspecialization. If a single faculty member had to be in house reading cases at all times, that would create a very undesirable situation wherein chest radiologists would have to read brain MRI or CT studies, mammographers would have to read CTs of the abdomen, and so on. This would clearly not be in the best interests of good patient care. In fact, a recent study from the University of Pittsburgh (Branstetter et al, *Acad Radiol* 2007; 14:201) looked at this very issue. They determined the error rates in 65,780 Emergency Department CT and plain x-ray studies that were interpreted by radiology residents and junior or senior radiology attending staff who were covering in the ED outside their areas of subspecialty expertise. The "gold standard" was the final interpretation by the appropriate subspecialty radiologist the next morning. The error rates for CT were 2.0% for radiology residents, 2.5% for senior radiology attendings, and 1.8% for junior radiology attendings. In plain x-ray, the error rates were 0.8% for radiology residents, 0.5% for senior radiology attendings, and 0.8% for junior radiology attendings. In essence, the radiology residents did just as well as faculty

attendings who are working outside their areas of subspecialization. This means there is no advantage to be gained from having a radiology attending in house nights and weekends unless that individual is working specifically in his/her area of expertise. But, if our department were forced to have subspecialists in all areas of radiology in house nights and weekends, that would create an intolerable call burden on our faculty, and many of them would simply leave to go elsewhere. As it is, many of our faculty currently spend much of their evening and weekend time doing research or preparing teaching conferences.

We very carefully monitor error rates among our residents on call and in the very rare event of less-than-adequate performance, counseling and tutorials are provided. It is a high priority in our department that if an error is detected at morning readout by a subspecialty attending radiologist, the ED is notified immediately. In addition, if an ED attending is dissatisfied with a reading provided by a radiology resident, attending radiologists are on call from home at all times in neuroradiology, body CT, body MRI, ultrasound, nuclear medicine, general radiology, and interventional radiology. Often they can access cases from home using teleradiology, but if necessary, will come into the hospital. This arrangement has served the institution well for decades, and it would be highly disruptive to our department to change it.

Methodist Hospital Radiology.

Methodist Hospital (MH) is an intrinsic part of TJUH. It is wholly owned by TJUH. We are a single unit in regard to JCAHO requirements. We have worked closely with MH personnel in selection of PACS, and defining steps for implementation. This will provide a high level of functional integration. However,

the Methodist Hospital radiology services are provided by a private group which has chosen to stay at arms length from our own department. The Methodist radiology group has been invited and encouraged to function as a community division of JUP Radiology. This would benefit the hospital and both radiology groups, and would allow economies of scale to be achieved. Our department could benefit by having a community oriented group like the Methodist radiologists. The MH radiologists and their patients would benefit by having our subspecialty expertise available to them, as well as night call coverage which they currently outsource to a night hawk service. JUP would benefit by enlarging its revenue base. Despite all our efforts, there continues to be resistance from Methodist radiologists. It is time for the TJUH and Methodist Hospital administrations to make it happen.

Ambulatory Care Facility. A new large ambulatory care facility is planned for the corner of 10th and Sansom Streets, tentatively scheduled for opening in 3 to 5 years. The goal would be to provide comprehensive, coordinated and convenient care to patients. Discussions continue to be held about what ancillary services to provide there. This needs careful business planning to assess consolidation, costs versus benefit of duplicating high-end imaging resources. TJUH and our department are in the final stages of a beautiful and expensive renovation of 10 Main and 3 Gibbon. State-of-the-art CT and MR scanners are now located on 3 Gibbon along with plain radiography and fluoroscopy, as well as a spacious and attractive outpatient waiting

area. Patients will be able to easily access this area via a bridge from the new ambulatory building. Our department is already widely dispersed throughout the campus as well as off campus, and having to cover yet another site would put additional strain on both physician and technologist manpower.

Scope of JUP Radiology Practice.

Some of the JUP clinical practices may be expanding beyond our campus into new locales as part of regional strategy. For example, discussions have been ongoing about a new outpatient facility for expanding the JUP cardiology practice in Bucks County somewhere near Frankford Hospital. It is imperative that when planning for expanding JUP practices is undertaken, and ancillary services are likely to be included, JUP Radiology be included and promoted as the primary provider of ancillary services. Preference should be given to our department in any venture that expands JUP's scope of practice in this manner

Expansion of Pre-Clinical Imaging at TJU. I am very pleased that we have been able to develop an animal imaging facility that includes micro CT and micro PET units. At present our PhD investigators use the animal imaging facilities for their own research; and support investigators from other departments including the Kimmel Cancer Center, Neurosciences and Cardiology for their research. We hope in the future to be able to add a 7T animal MRI as most investigators on campus will benefit from a full modality preclinical/molecular imaging core facility.

PUBLICATIONS

Journal Articles:

1. Acikgoz G, Kim SM, Houseni M, Cermik TF, Intenzo CM, Alavi A: Pulmonary lymphangitic carcinomatosis (PLC): Spectrum of FDG-PET findings. *Clin Nucl Med* 2006; 31:673-638.
2. Ashkenazi A, Abbas M, Sharma DK, Silberstein SD: Hemicrania continua-like headache associated with internal carotid artery dissection may respond to indomethacin. *Headache* 2007; 47:127-130.
3. Bergin D, Hubert J: MRI of the female pelvis: When is it indicated? *Appl Radiol*, in press.
4. Bix G, Castello R, Burrows M, Zoeller JJ, Weech M, Izzo R A, Cardi C, Thakur ML, Barker CA, Camphausen K, Iozzo RV: Endorepellin in vivo: Targeting the tumor vasculature and retarding cancer growth and metabolism. *J Natl Cancer Inst* 2006; 98:1634-1646.
5. Carrino JA, Blum J, Parellada JA, Schweitzer ME, Morrison WB: MRI of bone marrow edema-like signal in the pathogenesis of subchondral cysts. *Osteoarthritis Cartilage* 2006; 14:1081-1085.
6. Carrino JA, Swathwood TC, Morrison WB, Glover JM: Prospective evaluation of contrast-enhanced MR imaging after uncomplicated lumbar discography. *Skeletal Radiol* 2007; 36:293-299.
7. Chiou SY, Lev-Toaff A, Masuda E, Feld R, Bergin D: Adnexal torsion: New clinical and imaging observations by ultrasound, CT and MRI. *J Ultrasound Med*, in press.
8. Chiou SY, Liu JB, Needleman L: Current status of sonographically guided radiofrequency ablation techniques. *J Ultrasound Med* 2007; 26:487-499.
9. Choi D, Mitchell DG, Verma SK, Bergin D, Navarro VJ, Malliah AB, McGowan C, Hann HW, Herrine SK: Hepatocellular carcinoma with indeterminate or false negative findings at initial MR imaging: Effect on eligibility for curative treatment: Initial observations. *Radiology* 2007; 244:776-783.
10. Chopra S, Bergin D, Oors F: MRI of lymphangiosarcoma. *Br J Radiol*, in press.
11. Das S, Zhang S, Mitchell D, Gidding SS: Metabolic syndrome with early aortic atherosclerosis in a child. *J Cardiometab Syndr* 2006; 1:286-287.
12. Elias I, Besser MP, Nazarian LN, Raikin SM: Reconstruction of retracted Achilles tendon rupture with V-Y lengthening and FHL tendon transfer through one incision. *Foot Ankle*, in press.
13. Elias I, Pahl MA, Zoga AC, Goins ML, Vaccaro AR: Recurrent burner syndrome due to presumed cervical spine osteoblastoma in a collision sport athlete – A case report. *J Brachial Plex Peripher Nerve Inj* 2007; 2:13.
14. Elias I, Zoga AC, Raikin SM, Schweitzer ME, Morrison WB: Incidence and morphologic characteristics of benign calcaneal cystic lesions on MRI. *Foot Ankle Int* 2007; 28:707-714.

15. Elias I, Zoga AC, Schweitzer ME, Ballehr L, Morrison WB, Raikin SM: A specific bone marrow edema around the foot and ankle following trauma and immobilization therapy: Pattern description and potential clinical relevance. *Foot Ankle Int* 2007; 28:463-471.
16. Elias I, Zoga AC, Schweitzer ME, Peterson JR, Besser MR, Raikin SR, Morrison WB: Overuse syndrome of the ankle in professional high performance ballet dancers seen on MRI. *Foot Ankle Int*, in press.
17. Flanders AE: Next generation web search: Augmenting information access for radiologists. *RadioGraphics*, in press.
18. Flanders AE: What is the future of electronic learning in radiology? *RadioGraphics* 2007; 27:559-561.
19. Forsberg F: Will the combination of US contrast microbubbles and high-intensity focused ultrasound enable noninvasive brain surgery? *Radiology* 2006; 241:1-2.
20. Forsberg F, Piccoli CW, Merton DA, Palazzo JJ, Hall AL: Breast lesions: Imaging with contrast-enhanced subharmonic US initial experience. *Radiology* 2007; 244:718-726.
21. Forsberg F, Stein AD, Liu JB, Deng X, Ackerman W, Herzog D, Abend K, Needleman L: Validating volume flow measurements from a novel semiautomated four-dimensional Doppler ultrasound scanner. *Acad Radiol* 2006; 13:1204-1210.
22. Frauscher F, Klauser A, Halpern EJ, Pallwein L, Steiner H, Horninger W, Rogatsch H, Bartsch G: Comparison of contrast-enhanced color Doppler targeted biopsy to conventional systematic biopsy: Impact on Gleason score. *J Urol*, in press.
23. Ghanim AJ, Daskalakis C, Eschelmann DJ, Kraft WK: A five-year, retrospective comparison review of survival in neurosurgical patients diagnosed with venous thromboembolism and treated with either inferior vena cava filters or anticoagulation. *J Thromb Thrombolysis* 2007 Mar 24; [Epub ahead of print].
24. Gil HC, Levine SM, Zoga AC: MRI findings in the subchondral bone marrow: A discussion of conditions including transient osteoporosis, transient bone marrow edema syndrome, SONK, and shifting bone marrow edema of the knee. *Semin Musculoskelet Radiol* 2006; 10:177-186.
25. Gonsalves C, Franciosa SV, Shah S, Bonn J, Wu C: Patient presentation and management of labial ulceration following uterine artery embolization. *Cardiovasc Intervent Radiol* 2007 Jul 12; [Epub ahead of print].
26. Gopez AG, Kavanagh EC: MR imaging of the postoperative meniscus: Repair, resection, and replacement. *Semin Musculoskelet Radiol* 2006; 10:229-240.
27. Greenbaum L, Burns P, Copel J, Cosgrove D, Fowlkes JB, Goldberg B, Mattrey R, Merton D, Robbin M, Wilson S: American Institute of Ultrasound in Medicine recommendations for contrast-enhanced liver ultrasound imaging clinical trials. *J Ultrasound Med* 2007; 26:705-716.
28. Howard CM, Forsberg F, Minimo C, Liu JB, Merton DA, Claudio PP: Ultrasound guided site specific gene delivery system using adenoviral vectors and commercial ultrasound contrast agents. *J Cell Physiol* 2006; 209:413-421.

29. Hricak H, Gatsonis C, Coakley F, Snyder B, Reinhold C, Schwartz LH, Woodward P, Pannu H, Amendola M, Mitchell DG: CT and MR imaging in the preoperative evaluation of cervical cancer: ACRIN/GOG comparative study of diagnostic performance and reader variability. *Radiology*, in press.
30. Intenzo CM: Invited commentary – Integrated PET/CT for adrenal gland lesion characterization in cancer patients: Diagnostic efficacy and interpretation pitfalls. *RadioGraphics* 2006; 26:1824-1825.
31. Intenzo CM, Jabbour S, Lin HC, Kim SM, Capuzzi DM, Mitchell EP: Scintigraphic imaging of neuroendocrine tumors. *RadioGraphics*, in press.
32. Johnson MT, Zhang S, Gilkeson R, Ameduri R, Siwik E, Patel CR, Chebotarev O, Kenton AB, Bowles KR, Towbin JA, Robin NH, Brozovich F, Hoit BD: Intrafamilial variability of noncompaction of the ventricular myocardium. *Am Heart J* 2006; 151:1019.e7-14.
33. Kavanagh EC, Koulouris G, Gopez A, Zoga A, Raikin S, Morrison WB: MRI of rupture of the spring ligament complex with talo-cuboid impaction. *Skeletal Radiol* 2007; 36: 555-558.
34. Kavanagh EC, Roberts CC, Frangos A, Parker L, Gopez A, Deely D, Morrison WB: Musculoskeletal biopsy utilization and provider distribution in the United States Medicare population. *Acad Radiol* 2007; 14: 371-375.
35. Kavanagh EC, Zoga AC, Abboud JA, Koulouris G, Morrison WB: Glenoid dysplasia: Radiographic, direct MR arthrographic and arthroscopic appearances. *Radiology Case Reports* 2006; 1:50-53.
36. Kavanagh EC, Zoga A, Omar I, Ford S, Schweitzer M, Eustace S: MRI findings in bipartite patella. *Skeletal Radiol* 2007; 36:209-214.
37. Kim MJ, Kim JH, Choi JY, Park SH, Chung JJ, Kim KW, Mitchell DG: Optimal TE for SPIO-enhanced gradient-recalled echo MRI for the detection of focal hepatic lesions. *AJR* 2006; 187:W255-W266.
38. Lammertse D, Dungan D, Dreisbach J, Falci S, Flanders A, Marino R, Schwartz E; National Institute on Disability and Rehabilitation: Neuroimaging in traumatic spinal cord injury: An evidence-based review for clinical practice and research. *J Spinal Cord Med* 2007; 30:205-214.
39. Levin DC, Rao VM: Turf wars in radiology: Challenges leveled at our specialty and how to respond to them. *J Am Coll Radiol* 2007; 4:492-493.
40. Levin DC, Rao VM: Turf wars in radiology: Privileging and site accreditation programs – What they have accomplished for commercial health plans? *J Am Coll Radiol* 2006; 3:534-536.
41. Levin DC, Rao VM: Turf wars in radiology: The future of radiology depends on research – and on your support of it! *J Am Coll Radiol* 2007; 4:184-186.
42. Levin DC, Rao VM, Frangos AJ, Parker L, Sunshine JH: Current practice patterns and recent trends in breast biopsy among radiologists and surgeons. *J Am Coll Radiol* 2006; 3:707-709.
43. Levin DC, Rao VM, Frangos AJ, Parker L, Sunshine JH: Recent trends in utilization of vascular ultrasound among radiologists, surgeons, cardiologists, and other physicians. *J Am Coll Radiol* 2007; 4:125-127.

44. Levin DC, Rao VM, Parker L, Frangos AJ, Sunshine JH: The effect of the introduction of MR and CT angiography on the utilization of catheter angiography for peripheral arterial disease. *J Am Coll Radiol* 2007; 4:457-460.
45. Levin DC, Rao VM, Parker L, Frangos AJ, Sunshine JH: Recent trends in utilization rates of noncardiac thoracic imaging – An example of how imaging growth might be controlled. *J Am Coll Radiol*, in press.
46. Leybold BG, Flanders AE, Schwartz ED, Burns AS: The impact of methylprednisolone on lesion severity following spinal cord injury. *Spine* 2007; 32:373-378.
47. Limkakeng AT, Halpern E, Takakuwa KM: Sixty-four-slice multidetector computed tomography: The future of ED cardiac care. *Am J Emerg Med* 2007; 25:450-458.
48. Linden RA, Halpern EJ: Advances in transrectal ultrasound imaging of the prostate. *Semin Ultrasound CT MRI* 2007; 28:249-257.
49. Liu JB, Merton DA, Wansaicheong G, Forsberg F, Edmonds PR, Deng XD, Luo Y, Needleman L, Halpern E, Goldberg BB: Contrast enhanced ultrasound for radio frequency ablation of canine prostates: Initial results. *J Urol* 2006; 176:1654-1660.
50. Lo SL, Zoga AC, Elias I, Peterson JR, Chao W, Morrison WB: Stress fracture of the distal phalanx of the great toe in a professional ballet dancer: A case report. *Am J Sports Med* 2007; 35:1564-1566.
51. Maes RM, Morrison WB, Lewin JS, Duerk JL, Kiewiet CJ, Wacker FK: Use of intra-articular carbon dioxide and air for MR arthrography: A feasibility study. *Contrast Media Mol Imaging* 2006; 1:147-152.
52. Maher TM, Gupta NK, Burke MM, Carby MR: CT findings of varicella pneumonia after lung transplantation. *AJR* 2007; 188:557-559.
53. Martin ND, Kim JC, Verma SK, Rubin R, Mitchell DG, Bergin D, Yeo CJ: Intra-abdominal esophageal duplication cysts: A review. *J Gastrointest Surg* 2007; 11:773-777.
54. McShane JM, Nazarian LN, Harwood MI: Sonographically guided percutaneous needle tenotomy for treatment of common extensor tendinosis in the elbow. *J Ultrasound Med* 2006; 25:1281-1289.
55. Merritt C: Expert review: Elastography of the breast. *Breast Diseases Quarterly*, in press.
56. Mitchell DG, Navarro VJ, Herrine SK, Bergin D, Parker L, Frangos A, McCue P, Rubin R: Compensated hepatitis C: Unenhanced MR imaging correlated with pathologic grading and staging. *Abdom Imaging* 2007 Mar 27; [Epub ahead of print].
57. Mitchell DG, Snyder B, Coakley F, Reinhold C, Thomas G, Amendola M, Schwartz LH, Woodward P, Pannu H, Hricak H: Early invasive cervical cancer: Tumor delineation by magnetic resonance imaging, computed tomography, and clinical examination, verified by pathologic results, in the ACRIN 6651/GOG 183 Intergroup Study. *J Clin Oncol* 2006; 24:5687-5694.

58. Mitterberger M, Pinggera G, Horninger W, Strasser H, Halpern E, Pallwein L, Gradl J, Bartsch G, Frauscher F: Dutasteride prior to contrast-enhanced colour Doppler ultrasound prostate biopsy increases prostate cancer detection. *Eur Urol* 2007 Feb 20; [Epub ahead of print].
59. Morrison WB, Parker L, Frangos AJ, Carrino JA: Vertebroplasty in the United States: Guidance method and provider distribution, 2001-2003. *Radiology* 2007; 243:166-170.
60. Nazarian LN: Science to practice: Can sonoelastography enable reliable differentiation between benign and metastatic cervical lymph nodes? *Radiology* 2007; 243:1-2.
61. Ong C, Nallamshetty HS, Nazarian LN, Rekant MS, Mandel S: Sonographic diagnosis of posterior interosseous nerve entrapment syndrome. *Radiology Case Reports* 2007; 2:1-4.
62. Ors F, Chopra S, Qazi N, Bergin D: MRI of ectopic adrenal rest with MRI characteristics of adrenal adenoma. *Br J Radiol*, in press.
63. Ors F, Lev-Toaff AS, Bergin D: Echogenic foci mimicking adenomyosis presumably due to air intravasation into the myometrium during sonohysterography. *Diagn Interv Radiol* 2007; 13:26-29.
64. Parellada AJ, Gopez AG, Morrison WB, Sweet S, Leinberry CF, Reid SB, Kohn M: Distal intersection tenosynovitis of the wrist: A lesser-known extensor tendinopathy with characteristic MR imaging features. *Skeletal Radiol* 2007; 36: 203-208.
65. Parellada AJ, Morrison WB, Reiter SB, Carrino JA, Glickman PL, Kloss LA, Patel P: Unsuspected lower extremity deep venous thrombosis simulating musculoskeletal pathology. *Skeletal Radiol* 2006; 35:659-664.
66. Parellada AJ, Morrison WB, Reiter SB, Carrino JA, Kloss LA, Glickman PL, McLean M, Culp RW: Flexor carpi radialis tendinopathy: Spectrum of imaging findings and association with triscape arthritis. *Skeletal Radiol* 2006; 35:572-578.
67. Pyrros A, Nikolaidis P, Yaghmai V, Zivin S, Tracy JI, Flanders A: A Bayesian approach for the categorization of radiology reports. *Acad Radiol* 2007; 14:426-430.
68. Raikin SM, Elias I, Zoga AC, Morrison WB, Besser M, Schweitzer ME: Osteochondral lesions of the talus: Localization and morphologic data from 424 patients using a novel anatomical grid scheme. *Foot Ankle Int* 2007; 28:154-161.
69. Rao VM, Levin DC: Turf wars in radiology: What must academic radiology do? *J Am Coll Radiol*, in press.
70. Roberts CC, Morrison WB, Deely DM, Zoga AC, Koulouris G, Winalski CS: Use of a novel percutaneous biopsy localization device: Initial musculoskeletal experience. *Skeletal Radiol* 2007; 36:53-57.
71. Roberts CC, Towers JD, Spangehl MJ, Carrino JA, Morrison WB: Advanced MR imaging of the cruciate ligaments. *Magn Reson Imaging Clin N Am* 2007; 15:73-86.

72. Seidler DG, Goldoni S, Agnew C, Cardi C, Thakur ML, Owens RT, McQuillan DJ, Iozzo RV: Decorin protein core inhibits in vivo cancer growth and metabolism by hindering epidermal growth factor receptor function and triggering apoptosis via caspase-3 activation. *J Biol Chem* 2006; 281:26408-26418.
73. Shi WT, Forsberg F, Vaidyanathan P, Tornes A, Østensen J, Goldberg BB: The influence of acoustic transmit parameters on the destruction of contrast microbubbles in vitro. *Phys Med Biol* 2006; 51:4031-4045.
74. Tian LF, Lai S, Lee GZ, Zhou C, Chen M, Zhou TG, Cai K, Wang WC, Yang ZH, Zhao WF, Wang JZ: Using functional magnetic resonance imaging to study the correlation between the acupoint and cerebral region. *Acupuncture Research* 2006; 2:113-115.
75. Tian X, Aruva M, Zhang K, Cardi C, Thakur M, Wickstrom E: In vivo micro PET imaging of CCND1 mRNA in breast cancer xenografts with receptor-specific Cu-64-chelator-peptide nucleic acid peptide chimeras. *J Nucl Med*, in press.
76. Tian X, Chakrabarti A, Amirkhanov N, Aruva MR, Zhang K, Cardi CA, Lai S, Thakur ML, Wickstrom E: Receptor-mediated internalization of chelator-PNA-peptide hybridization probes for radioimaging or magnetic resonance imaging of oncogene mRNA in tumours. *Biochem Soc Trans* 2007; 35:72-76.
77. Tracy JI, Goyal N, Flanders AE, Weening R, Laskas J, Natale P, Waldron B: Listening to your body: An fMRI analysis of attention to one's heartbeat. *Psychosom Med*, in press.
78. Verma S, Hann HW, Navarro V, Bergin D, Mitchell DG: Hepatocellular carcinoma with indeterminate or false negative initial MR imaging: Effect on treatment eligibility. *Radiology*, in press.
79. Verma SK, Mitchell DG, Bergin D, Mehta R, Chopra S, Choi D: The cisterna chyli: Enhancement on delayed MR images after intravenous administration of gadolinium chelate. *Radiology* 2007; 244:791-796.
80. Vogel-Claussen J, Morrison WB, Zoga AC, Bergin D, Gopez A, Fayad LM: Calcific tendinosis: A potential mimicker of malignancy on PET. *Radiology Case Reports* 2006; 1:38-41.
81. Wang YX, Liu JB: The application and prospect of catheter-base endosonography in urinary surgery. *Chinese Journal of Ultrasonography* 2007; 16:81-83.
82. Welch MJ, Thakur M: Basic research issues. *J Nucl Med* 2006; 47:38N-40N.
83. Wheatley MA, Forsberg F, Oum K, Ro R, El-Sherif D: Comparison of in vitro and in vivo acoustic response of a novel 50:50 PLGA contrast agent. *Ultrasonics* 2006; 44:360-367.
84. Wickstrom E, Thakur M: Imaging cancer gene activity patients from outside the body. *Biotechnology Healthcare*, in press.
85. Wu JS, Gorbachova T, Morrison WB, Haims AH: Imaging-guided bone biopsy for osteomyelitis: Are there factors associated with positive or negative cultures? *AJR* 2007; 188:1529-1534.

86. Yoshikawa T, Kawamitsu H, Mitchell DG, Ohno Y, Ku Y, Seo Y, Fujii M, Sugimura K: ADC measurement of abdominal organs and lesions using parallel imaging technique. *AJR* 2006; 187:1521-1530.
87. Zhang K, Aruva M, Shanthly N, Cardi C, Patel C, Rattan S, Cefarone G, Wickstrom E, Thakur M: Vasoactive intestinal peptide (VIP) and pituitary adenylate cyclase activating peptide (PACAP) receptor specific peptide analogues for PET imaging of breast cancer: In vitro/in vivo evaluation. *Regul Pept*, in press.
88. Zhang S, Rafie S, Chen Y, Hillenbrand CM, Wacker FK, Duerk JL, Lewin JS: In vivo cardiovascular catheterization under real-time MRI guidance. *J Magn Reson Imaging* 2006; 24: 914-917.
89. Zhang XM, Feng ZS, Zhao QH, Xiao CM, Mitchell DG, Shu J, Zeng NL, Xu XX, Lei JY, Tian XB: Acute interstitial edematous pancreatitis: Findings on non-enhanced MR imaging. *World J Gastroenterol* 2006; 12:5859-5865.
90. Zoga AC, Kavanagh EC, Omar I, Morrison WB, Koulouris G, Chaabra A, Domesek J, Lopez H, Meyers WC: MRI findings in athletic pubalgia and the "sports hernia". *Radiology*, in press.

Books and Book Chapters:

91. Bergin D, Mitchell DM: Magnetic resonance imaging (in) Yamada T, Alpers DH, Kaplowitz N, Kalloo, Owyang C, Powell DW (eds): *Textbook of Gastroenterology*, 5th Edition. Philadelphia: Lippincott Williams & Wilkins, in press.
92. Finden SG, Rao VM: TMJ: Internal derangement (in) Morrison WB, Sanders TG (eds): *Problem Solving in Musculoskeletal Radiology*. Philadelphia: Elsevier, in press.
93. Flanders AE: Magnetic resonance imaging in acute spinal trauma (in) Schwartz ED, Flanders AE (eds): *Spinal Trauma: Imaging Diagnosis and Management*. Philadelphia: Lippincott Williams & Wilkins, 2007.
94. Flanders AE, Schwartz ED: Spinal trauma (in) Atlas SW (ed): *Magnetic Resonance Imaging of the Brain and Spine*, 4th edition. Philadelphia: Lippincott Williams & Wilkins, in press.
95. Freedman M, Morrison WB, Harwood MI (eds): *Minimally Invasive Musculoskeletal Pain Medicine*. London: Informa Healthcare, 2007.
96. Gardiner GA Jr.: Interventional radiology (in) Osborn A (ed): *Year Book of Diagnostic Radiology, 2006*. Philadelphia: Elsevier, 2006.
97. Gillen MA, Halpern EJ: Adrenal gland (in) Goldberg BB, McGahan JP (eds): *Atlas of Ultrasound Measurements*, 2nd edition. Philadelphia: Elsevier, 2006.
98. Gopez AG, Cho A: An overview of orthopedic devices (in) Pope TL, Beltran J, Morrison WB, Bloem J, Wilson D (eds): *Imaging of the Musculoskeletal System*. Philadelphia: Elsevier, in press.
99. Halpern EJ: Bladder (in) Goldberg BB, McGahan JP (eds): *Atlas of Ultrasound Measurements*, 2nd edition. Philadelphia: Elsevier, 2006.

100. Halpern EJ (ed): *Clinical Cardiac CT: Anatomy and Function*. New York: Thieme Medical Publishers, in press.
101. Halpern EJ: Imaging Studies – contributing author (in) Gomella LG, Haist SA (eds): *Clinician's Pocket Reference*, 11th edition. New York: McGraw-Hill, 2007.
102. Halpern EJ: Prostate and seminal vesicle measurements (in) Goldberg BB, McGahan JP (eds): *Atlas of Ultrasound Measurements*, 2nd edition. Philadelphia: Elsevier, 2006.
103. Halpern EJ: Renal measurements (in) Goldberg BB, McGahan JP (eds): *Atlas of Ultrasound Measurements*, 2nd edition. Philadelphia: Elsevier, 2006.
104. Heman-Ackah L, Rao VM, Goding M: External laryngeal trauma (in) Rubin JS, Korovin GS (eds): *Diagnosis and Treatment of Voice Disorders*, 3rd edition. San Diego: Plural Publishing, 2006.
105. Hollander MH, Flanders AE: Imaging of the aging brain (in) Sirven JI, Malamut BL (eds): *Clinical Neurology of the Older Adult*, 2nd edition. New York: Lippincott Williams & Wilkins, 2008.
106. Ives EP, Halpern EJ (in) Miles K (ed): *Multi-Detector Computed Tomography in Oncology: CT Perfusion Imaging*. London: Taylor and Francis, 2007.
107. Liu JB, Merton DA, Forsberg F, Goldberg BB: Contrast-enhanced ultrasound imaging (in) McGahan JP, Goldberg BB (eds): *Diagnostic Ultrasound*, 2nd edition. New York: Taylor and Francis, 2007.
108. McGahan JP, Goldberg BB (eds): *Diagnostic Ultrasound*, 2nd edition. New York: Taylor and Francis, 2007.
109. Merritt CRB: Imaging techniques (in) Bibbo M, Wilbur (eds): *Comprehensive Cytopathology*, 3rd edition. Amsterdam: Elsevier, in press.
110. Morales RE, Flanders AE: Imaging of the oral cavity, pharynx, salivary glands and neck (in) Wackym S (ed): *Ballenger's Otorhinolaryngology Head and Neck Surgery*, 17th edition. Hamilton: BC Decker, 2007.
111. Morrison WB, Sanders TG (eds): *Problem Solving in Musculoskeletal Radiology*. Philadelphia: Elsevier, in press.
112. Pope TL, Beltran J, Morrison WB, Bloem J, Wilson D (eds): *Imaging of the Musculoskeletal System*. Philadelphia: Elsevier, in press.
113. Schwartz ED, Flanders AE (eds): *Spinal Trauma: Imaging Diagnosis and Management*. Philadelphia: Lippincott Williams & Wilkins, 2007.
114. Wilkes AN, Piccoli CW: Breast ultrasound (in) McGahan JP, Goldberg BB (eds): *Diagnostic Ultrasound*, 2nd edition. New York: Taylor and Francis, 2007.
115. Zoga AC, Karasick D: Cross sectional imaging of the hip (in) Pope TL, Morrison WB, Beltran J (eds): *Imaging of the Musculoskeletal System*. Philadelphia: Elsevier, in press.

116. Zoga AC, Malone WJ: Cross sectional imaging of the hip (in) Hozack WJ, Parvizi J (eds): *Surgical Treatment of Hip Arthritis: Reconstruction, Replacement, Revision*. Philadelphia: Elsevier, in press.

Abstracts:

117. Amirkhanov NV, Aruva MR, Zhang KJ, Dimitrov I, Lai S, Cardi C, Thakur ML, Wickstrom E: Cancer detection in mice using dendrimeric Gd-peptide nucleic acid-peptide molecular probes. *Proceedings of the International Society for Magnetic Resonance in Medicine 15th Scientific Meeting and Exhibition*, Berlin, Germany, May 2007.
118. Aruva MR, Zhang K, Shanthly N, Cardi CA, Patel C, Ratan S, Thakur ML: PET/CT imaging of VPAC1 receptors in human breast cancer xenografts using 64-Cu labeled cyclized peptide. *J Nucl Med* 2007; 48(P):307.
119. Baltarowich OH, Goldberg BB, Wilkes AN, Fox TB, Veloski, JJ: Assessment of an ultrasound training program for physicians from the Caribbean, Central, and South America. *J Ultrasound Med* 2007; 26(S):136-137.
120. Baltarowich OH, Goldberg BB, Wilkes AN, Fox TB, Veloski JJ: Evaluation of the effectiveness of an ultrasound training program for physicians from the Caribbean, Central, and South America. *Proceedings of the 92nd Scientific Assembly and Annual Meeting of the Radiological Society of North America*, Chicago, IL, November-December 2006.
121. Bergin D, Qazi N: Mapping marrow edema patterns on MRI related to extrinsic ligament injuries of the wrist. *Proceedings of the 92nd Scientific Assembly and Annual Meeting of the Radiological Society of North America*, Chicago, IL, November-December 2006.
122. Bhagat NN, Zoga AC, Morrison WB, Bergin D: Internal derangement criteria for meniscal tear of the knee at low field strength: Correlation of findings on a 0.3-T open MRI with arthroscopy. *AJR* 2007; 188:A84.
123. Boghosian G, Leypold BG, Sharma DK, Burns AR, Marino RJ, Flanders AE: Estimating the neurological level of injury with MRI following cervical spinal cord injury. *Proceedings of the 92nd Scientific Assembly and Annual Meeting of the Radiological Society of North America*, Chicago, IL, November-December 2006.
124. Boonn WW, Safdar NM, Severance S, Vandermeer PA, Kim W, Siddiqui K, Flanders AE, et al: RSS for radiologists: MIRC, podcasts, blogs, and more. *Proceedings of the 92nd Scientific Assembly and Annual Meeting of the Radiological Society of North America*, Chicago, IL, November-December 2006.
125. Burns AS, Flanders AE, Fried G, Marino RJ: Imaging peripheral denervation caudal to acute spinal cord injury. *Proceedings of the 52nd Annual Conference of the American Paraplegia Society*, Las Vegas, NV, September 2006.
126. Cao Z, Cardi C, Thakur ML, Acton PD: Small animal SPECT imaging on PET cameras using a multi-phinhole collimator insert. *World J Nucl Med* 2006; 5:S32.

127. Chen Y, Fayad LM, Raman SP, Morrison WB, Carrino JA: Atraumatic lateral collateral ligament complex signal abnormalities by MRI in patients with lateral compartment knee osteoarthritis. *AJR* 2007; 188:A82.
128. Dheer S, Pavri B, Halpern EJ: Variant anatomy of the left atrial appendage: Potential impact on planning for electrophysiologic ablation procedures. *Proceedings of the 92nd Scientific Assembly and Annual Meeting of the Radiological Society of North America*, Chicago, IL, November-December 2006.
129. Dheer S, Zoga A, Elias I, Kavanagh EC, Morrison WB, Raikin SM: MRI of Lisfranc injury: Accuracy and spectrum of disease. *AJR* 2007; 188:A43.
130. Dolin RJ, Halpern EJ, MD; Lockhard C: Analysis of errors in radiology reports generated by voice recognition dictation software. *Proceedings of the 92nd Scientific Assembly and Annual Meeting of the Radiological Society of North America*, Chicago, IL, November-December 2006.
131. Elias I, Zoga AC, Morrison WB, Beltran L, Schweitzer ME, Raikin SM: Osteochondral lesions of the distal tibial plafond: Location and morphological characteristics on MRI. *AJR* 2007; 188:A41.
132. Elias I, Zoga AC, Raikin SM, Nazarian LN: Dynamic ultrasound evaluation of peroneal tendon pseudosubluxation: Significance and pattern description. *AJR* 2007; 188:A42.
133. Feld R, Merton D, Fukunari N, Ishikawa K, Yucel C, Forsberg F: Evaluation of thyroid nodules with gray scale ultrasound, color Doppler, and elastography: Preliminary results. *J Ultrasound Med* 2007; 26(S):23.
134. Flanders AE, Severance S, Siddiqui KM, Vandermeer PA, Boonn WW, Safdar NM, et al: MIRCWebConverter: Automated conversion of existing web-based radiology teaching material to MIRC compatible documents. *Proceedings of the 92nd Scientific Assembly and Annual Meeting of the Radiological Society of North America*, Chicago, IL, November-December 2006.
135. Forsberg F, Kuruvilla B, Pascua M, Chaudhari MH, Palazzo JJ, Goldberg BB: Comparing contrast-enhanced US and pathology measures of breast lesion vascularity. *Proceedings of the 92nd Scientific Assembly and Annual Meeting of the Radiological Society of North America*, Chicago, IL, November-December 2006.
136. Forsberg F, Soparawala R, Merton DA, Piccoli CW, Palazzo JJ, Hall AL: Quantitative analysis of contrast enhanced subharmonic breast images. *Proceedings of the 2006 IEEE International Ultrasonics Symposium*, Vancouver, Canada, October 2006.
137. Friedman DP, Flanders AE, Denis RE: Mobile intradural schwannoma of the cauda equina. *Proceedings of the American Society of Spine Radiology 2007 Annual Symposium*, Marco Island, FL, February 2007.
138. Friedman D, Tartaglino L, Smith N, Bree R, Rao V: Participation of an academic neuroradiology division in a peer-to-peer ordering support program (HealthHelp RadConsult): Early results. *Proceedings of the 45th Annual Meeting of the American Society of Neuroradiology*, Chicago IL, June 2007.

139. Goldberg BB, Baltarowich OH, Wilkes A, Anane-Firempong A: Evaluation of the effectiveness of an ultrasound physician training program. *Proceedings of the 18th Congress of the European Federation of Societies for Ultrasound in Medicine and Biology*, Bologna, Italy, October 2006.
140. Goldberg BB, Bisset GS, Stoopan ME, Dubbins P, Reeder MM: Responding to the needs of radiologic education in developing countries (sponsored by the RSNA Committee on International Relations and Education). *Proceedings of the 92nd Scientific Assembly and Annual Meeting of the Radiological Society of North America*, Chicago, IL, November-December 2006.
141. Goldberg BB, Merton DA, Liu JB, Aruva M, Forsberg F, Fox TB, Thakur M: Lymphosonography of sentinel lymph nodes in a melanoma tumor model: A comparison to lymphoscintigraphy. *Proceedings of the 18th Congress of the European Federation of Societies for Ultrasound in Medicine and Biology*, Bologna, Italy, October 2006.
142. Goldberg BB, Merton DA, Liu J, Aruva M, Fox TB, Chiou S, et al: Variability in lymphatic drainage from melanoma tumors: The effect of tumor location on the detection of sentinel lymph nodes. *Proceedings of the 92nd Scientific Assembly and Annual Meeting of the Radiological Society of North America*, Chicago, IL, November-December 2006.
143. Goldberg BB, Merton DA, Liu JB, Aruva M, Fox TB, Zhang KJ, Chiou SY, Thakur M, Forsberg F: Variability in lymphatic drainage from melanoma tumors: The effect of tumor location on the detection of sentinel lymph nodes. *J Ultrasound Med* 2007; 26(S):116.
144. Goldberg BB, Merton DA, Liu JB, Aruva M, Mathew B, Zhang K, Thakur M, Forsberg F: Detection of sentinel lymph nodes in swine with melanoma tumors: Comparison of contrast-enhanced US, nuclear medicine and blue dye with surgical dissection. *Ultrasound Med Biol* 2006; 32(5S):136.
145. Gorbachova TA, Morrison WB, Zoga AC, Haims AH, Wu JS: Bone biopsy in osteomyelitis: Retrospective analysis of histologically proven cases and correlation with culture results. *Proceedings of the 92nd Scientific Assembly and Annual Meeting of the Radiological Society of North America*, Chicago, IL, November-December 2006.
146. Guan X, Lai S, Lackey JP, Shi JR, Techavipoo U, Flanders AE, Andrews DW: Paint and track: Surface-based ROI selection in DTI fiber tracking. *Proceedings of the International Society for Magnetic Resonance in Medicine 15th Scientific Meeting and Exhibition*, Berlin, Germany, May 2007.
147. Halpern EJ: Optimizing coronary CT angiography. *Proceedings of the 92nd Scientific Assembly and Annual Meeting of the Radiological Society of North America*, Chicago, IL, November-December 2006.
148. Halpern EJ, Forsberg F, Gittens PR Jr, Trabulsi E, Gomella LG: Microflow imaging of the prostate during contrast-enhanced ultrasound: Initial experience. *Proceedings of the 92nd Scientific Assembly and Annual Meeting of the Radiological Society of North America*, Chicago, IL, November-December 2006.

149. Halpern EJ, Forsberg F, Linden RA, Gittens PR, Trabulsi E, Gomella LG: Detection of prostate cancer with contrast-enhanced microflow imaging. *J Ultrasound Med* 2007; 26(S):120.
150. Halpern EJ, Nelson ED, Slotoroff C, Gomella LG: Impact of gray scale, color Doppler and elastography on prostate cancer detection and Gleason score. *J Ultrasound Med* 2007; 26(S):121.
151. Halpern EJ, Zhang S, Wansaicheong GK: Assessment of the aortic valve area and morphology during cardiac CT angiography. *Proceedings of the 92nd Scientific Assembly and Annual Meeting of the Radiological Society of North America*, Chicago, IL, November-December 2006.
152. Halpern EJ, Zhang S, Wansaicheong GK: Assessment of the mitral valve area and coaptation during gated CT angiography. *Proceedings of the 1st Congress of the Asian Society of Cardiovascular Imaging*, Seoul, Korea, April 2007.
153. Howard CM, Forsberg F, Liu JB, Merton DA, Minimo C, Claudio PP: Using a commercial ultrasound contrast agent for viral-mediated gene transfer in vitro and in vivo. *Proceedings of the 6th International Symposium on Therapeutic Ultrasound*, Oxford, England, August-September 2006.
154. Intenzo CM, Kairys J, Miller J, Jabbour S, Capuzzi D, Kim SM: The role of SPECT in the localization of parathyroid adenomas with the neck: It's not only the mediastinum. *Proceedings of the 92nd Scientific Assembly and Annual Meeting of the Radiological Society of North America*, Chicago, IL, November-December 2006.
155. Intenzo CM, Kim SM: Are emergency room physicians justified in ordering lung v/q scans on asthmatic patients evaluated in the emergency room for an asthmatic attack? *Proceedings of the 92nd Scientific Assembly and Annual Meeting of the Radiological Society of North America*, Chicago, IL, November-December 2006.
156. Intenzo CM, Kim SM: Is routine thyroid function testing warranted in diffuse thyroidal uptake of 18-FDG? *Proceedings of the 92nd Scientific Assembly and Annual Meeting of the Radiological Society of North America*, Chicago, IL, November-December 2006.
157. Ives E, Nazarian L: Subscapularis tendon tears: A common sonographic finding in symptomatic post-arthroplasty shoulders. *AJR* 2007; 188:A65.
158. Jeanmenne PA, Ohno-Machado L, Zou KH, Morrison WB, Flanders AE, Khorasani R: Comparison of four prediction models to discriminate benign from malignant vertebral fractures based on MRI feature analysis. *Proceedings of the 92nd Scientific Assembly and Annual Meeting of the Radiological Society of North America*, Chicago, IL, November-December 2006.
159. Kavanagh EC, Zoga AC, Omar IM, Ford SM, Schweitzer ME, Eustace SJ: MRI findings in painful bipartite patella. *Proceedings of the 92nd Scientific Assembly and Annual Meeting of the Radiological Society of North America*, Chicago, IL, November-December 2006.

160. Kavanagh EC, Zoga AC, Omar I, Koulouris G, Gopez A, Bergin D, Morrison WB, Meyers WC: MR imaging of the rectus abdominus/adductor aponeurosis: Findings in the 'sports hernia'. *AJR* 2007; 188:A14.
161. Kim SM, Intenzo CM: Clinical relevance of discordant FDG-PET findings of bone metastases with bone scan or CT. *Proceedings of the 92nd Scientific Assembly and Annual Meeting of the Radiological Society of North America*, Chicago, IL, November-December 2006.
162. Kim SM, Intenzo CM: Limitation of dual-time point PET imaging to assess the likelihood of malignancy in the patients treated with radiation. *Proceedings of the 92nd Scientific Assembly and Annual Meeting of the Radiological Society of North America*, Chicago, IL, November-December 2006.
163. Kim CM, Intenzo CM, Miller J: Detection of recurrent disease in the patient with a negative diagnostic iodine scan and rising thyroglobulin level: Combined strategy with US and PET. *Proceedings of the 92nd Scientific Assembly and Annual Meeting of the Radiological Society of North America*, Chicago, IL, November-December 2006.
164. Kim SM, Natwa MP, Intenzo CM, Goodwich R: PET evaluation of bone metastases: Degree of hypermetabolic activity of FDG-PET depends on the degree of osteolytic or osteoblastic component in the bone metastases. *J Nucl Med* 2007; 48(P):379.
165. Kirkpatrick CT, Morrison WB, Zoga AC, Gopez A, Bergin D, Deely DM: Intraosseous ganglia of the knee: MR imaging characteristics. *AJR* 2007; 188:A85.
166. Leis D, Schwartz D, Devarajl D, Shah S, Siddiqui I, Boswell S, Weening R, Flanders A, Lai S, Tracy J: The brain topography associated with high versus low contextual constraint during sentence comprehension as a function of response accuracy. *Proceedings of the 13th Annual Meeting on Human Brain Mapping*, Chicago, IL, June 2007.
167. Levin DC, Rao VM, Parker L, Frangos AJ, Sunshine JH: Changes in recent years in the utilization patterns of noncardiac thoracic imaging. *Proceedings of the 92nd Scientific Assembly and Annual Meeting of the Radiological Society of North America*, Chicago, IL, November-December 2006.
168. Levin DC, Rao VM, Parker L, Frangos AJ, Sunshine JH: Comparison of workload trends in musculoskeletal imaging among radiologists and orthopedic surgeons between 2000 and 2004. *Proceedings of the 92nd Scientific Assembly and Annual Meeting of the Radiological Society of North America*, Chicago, IL, November-December 2006.
169. Levin DC, Rao VM, Parker L, Frangos AJ, Sunshine JH: The effect of the introduction of MR and CT angiography on utilization of catheter angiography for peripheral vascular disease. *Proceedings of the 92nd Scientific Assembly and Annual Meeting of the Radiological Society of North America*, Chicago, IL, November-December 2006.
170. Levin DC, Rao VM, Parker L, Frangos AJ, Sunshine JH: Utilization of breast imaging in the U.S. Medicare population: Recent trends. *Proceedings of the 92nd Scientific Assembly and Annual Meeting of the Radiological Society of North America*, Chicago, IL, November-December 2006.

171. Lev-Toaff AS, Chiou S-Y, Masuda E, Feld R, Bergin D: Adnexal torsion: New clinical and imaging observations. *J Ultrasound Med* 2007; 26(S):103.
172. Lev-Toaff AS, Pretorius DH, Baltarowich OH: Value of 3-dimensional sonography in women with intrauterine devices. *J Ultrasound Med* 2007; 26(S):173.
173. Lev-Toaff AS, Virmani S, Ciancibello LM, Pohlman S, deVries L, Norrgren K: Automatic polyp detection and measurement at CT colonography in a colon phantom. *Proceedings of the 18th Annual Meeting and Postgraduate Course of the European Society of Gastrointestinal and Abdominal Radiology*, Lisbon, Portugal, June 2007.
174. Lev-Toaff AS, Yucel C, Bergin D, Durrani H: CT colonography in older patients with incomplete conventional colonoscopy or contraindications to colonoscopy. *AJR* 2007; 188:A24.
175. Linden RA, Gittens PR, Forsberg F, Trabulsi E, Gomella LG, Halpern EJ: Directed prostate biopsies utilizing microflow imaging during microbubble contrast-enhanced ultrasound. *Proceedings of the 2007 Annual Meeting of the American Urological Association*, Anaheim, CA, May 2007.
176. Liu JB: Radiofrequency ablation of prostate monitored by contrast-enhanced US. *Proceeding of the 11th Annual Prouts Neck Prostate Cancer Meeting*, Prouts Neck, ME, November 2006.
177. Liu JB, Chiou SY, Merton DA, Yin LX, Forsberg F, Goldberg BB: Contrast-enhanced ultrasound for guiding and monitoring ethanol ablation of canine prostate. *J Ultrasound Med* 2007; 26(S):117.
178. Liu JB, Wansaicheong G, Merton DA, SunY, Goldberg BB, Forsberg F, Edmonds PR, Needleman L, Halpern E: Contrast-enhanced ultrasound for guiding RF ablation of prostates with and without urethral and neurovascular cooling. *Ultrasound Med Biol* 2006; 32(5S):123.
179. Malone WJ, Gopez AG, Zoga AC, Morrison WB: Segond fracture: A harbinger of posterolateral corner injuries? *AJR* 2007; 188:A83.
180. Malone WJ, Zoga AC, Bergin D, Gopez AG, Boylan D, Morrison WB: Indirect MR arthrography for evaluating glenoid labral pathology. *AJR* 2007; 188:A63.
181. McShane J, Shah V, Nazarian LN, Diamond J, Shmueli Y: US-guided percutaneous needle tenotomy for treatment of common extensor tendinosis in the elbow: A retrospective analysis. *Proceedings of the 92nd Scientific Assembly and Annual Meeting of the Radiological Society of North America*, Chicago, IL, November-December 2006.
182. Menschik ED, Murray J, Goldszal A, Nagy PG, Flanders AE, Langlotz CP: Do you know where your patient was imaged last? Relevant priors, duplicate exams, and patient mobility between competing imaging facilities: Initial results from the Philadelphia Health Information Exchange. *Proceedings of the 92nd Scientific Assembly and Annual Meeting of the Radiological Society of North America*, Chicago, IL, November-December 2006.

183. Mitchell DG, Snyder B, Thomas G, Reinhold C, Coakley FV, Schwartz LH, et al: Early invasive cervical cancer: MRI and CT predictors of occult lymphatic metastases in the ACRIN 6651/GOG 183 Intergroup Study. *Proceedings of the 92nd Scientific Assembly and Annual Meeting of the Radiological Society of North America*, Chicago, IL, November-December 2006.
184. Morrison WB, Roberts CC, Frangos AJ, Parker L, Gopez AG, Deely DM: Musculoskeletal biopsy: Utilization and provider distribution in the United States. *Proceedings of the 92nd Scientific Assembly and Annual Meeting of the Radiological Society of North America*, Chicago, IL, November-December 2006.
185. Moulding HD, Friedman DP, Andrews DW: Improved prognosis from non- enhancing or well-circumscribed astrocytomas. *Proceedings of the 2006 Congress of Neurological Surgeons Annual Meeting*, Chicago, IL, October 2006.
186. Moulding HD, Lai S, Guan X, Lackey JP, Shi JR, Techavipoo U, Flanders A, Andrews DW: Anaplastic astrocytoma subtypes with different imaging and prognostic qualities. *Proceedings of the 2007 Annual Meeting of the American Association of Neurological Surgeons*, Washington, DC, April 2007.
187. Murray J, Menschik ED, Goldszal A, Nagy PG, Flanders AE, Langlotz CP: Open standards for radiology RHIOs: IHE XDS-I and the Philadelphia Health Information Exchange. *Proceedings of the 92nd Scientific Assembly and Annual Meeting of the Radiological Society of North America*, Chicago, IL, November-December 2006.
188. Naran KN, Morrison WB, Flanders AE, Zoga AC, Gopez AG, Parker L: Effect of PACS implementation on incidental findings reported on cervical spine MRI. *Proceedings of the 92nd Scientific Assembly and Annual Meeting of the Radiological Society of North America*, Chicago, IL, November-December 2006.
189. Omar IM, Kavanaugh EC, Koulouris G, Bergin D, Gopez AG, Morrison WB, et al: Athletic pubalgia and the "sports hernia": Optimal imaging of the pubic symphysis region and pictorial review of MR technique and findings. *Proceedings of the 92nd Scientific Assembly and Annual Meeting of the Radiological Society of North America*, Chicago, IL, November-December 2006.
190. Parker L, Frangos AJ, Levin DC, Flanders AE, Rao VM: Utilization of headache evaluation imaging in the Medicare population: 2004. *Proceedings of the 92nd Scientific Assembly and Annual Meeting of the Radiological Society of North America*, Chicago, IL, November-December 2006.
191. Parker L, Nazarian L, Morrison WB, Frangos AJ, Rao VM: How are rotator cuff patients imaged in the Medicare population? *Proceedings of the 92nd Scientific Assembly and Annual Meeting of the Radiological Society of North America*, Chicago, IL, November-December 2006.
192. Rao N, Bergin D, Morrison W, Parker L, Zoga A: MRI of the rotator cuff interval on non-contrast MRI. Its appearance in association with rotator cuff and biceps tendon abnormalities. *AJR* 2007; 188:A64.

193. Rao VM, Levin DC, Parker L, Frangos AJ, Sunshine JH: Neuroimaging workload trends in recent years: Comparison between radiologists and neurologists. *Proceedings of the 92nd Scientific Assembly and Annual Meeting of the Radiological Society of North America*, Chicago, IL, November-December 2006.
194. Ro RJ, Forsberg F, Fox TB, Liu JB, Potoczek M, Lipcan KJ, Lewin PA, Goldberg BB: Assessing angiogenesis in murine glioma and breast tumor models with contrast-enhanced US. *Ultrasound Med Biol* 2006; 32(5S):87.
195. Ro RJ, Forsberg F, Liu JB, Fox TB, Potoczek M, Chiou SY, Lewin PA, Goldberg BB: Assessing angiogenesis in murine glioma and breast tumor models with contrast-enhanced ultrasound imaging. *Proceedings of the 2006 IEEE International Ultrasonics Symposium*, Vancouver, Canada, October 2006.
196. Ruzbarsky AL, Morrison WB, Bergin D, Gopez A, Zoga A, Roberts CC: Incidental findings on routine hip MRI: Frequency and follow-up. *AJR* 2007; 188:A14.
197. Severance S, Siddiqui KM, Boonn WW, Vandermeer PA, Kim W, Safdar NM, Flanders AE: GoogleMIRC: A next-generation search engine for teaching files. *Proceedings of the 92nd Scientific Assembly and Annual Meeting of the Radiological Society of North America*, Chicago, IL, November-December 2006.
198. Severance S, Siddiqui KM, Vandermeer PA, Bonn WW, Kim W, Flanders AE, et al: Lightweight MIRC authoring: Tools for rapidly creating simple MIRC documents. *Proceedings of the 92nd Scientific Assembly and Annual Meeting of the Radiological Society of North America*, Chicago, IL, November-December 2006.
199. Shah S, Flanders A, Stoddard E, Goyal N, Pascua M, Siddiqui I, Schwartz D, Lai S, Weening R, Natale P, Tracy J: Regional brain activation changes associated with automatic and controlled processing during a semantic categorization task. *Proceedings of the 13th Annual Meeting on Human Brain Mapping*, Chicago, IL, June 2007.
200. Siddiq F, Gardner CJ, Jalil A, Brock DG, Friedman DP: Are reversible posterior leukoencephalopathy syndrome (RPLS) and posterior reversible encephalopathy syndrome (PRES) misnomers? *Proceedings of the 59th Annual Meeting of the American Academy of Neurology*, Boston, MA, April-May 2007.
201. Sullivan KL: New frontiers in interventional oncology: Diagnosis, treatment, and evaluating response. New drugs for TACE and immunotherapy. *JVIR* 2007; 18:2.
202. Techavipoo U, Lai S, Dimitrov I, Lackey JP, Shi JR, Guan X: PLACE + SPHERE: A robust approach for correction of susceptibility artifacts in EPI. *Proceedings of the International Society for Magnetic Resonance in Medicine 15th Scientific Meeting and Exhibition*, Berlin, Germany, May 2007.
203. Thakur ML: Cu-64 peptide PET imaging of VPAC1 oncogene product in breast tumors. *Eur J Nucl Med Mol Imaging* 2006; 33:S219.
204. Thakur ML: Genomic and proteomic approaches to MI of cancer. *World J Nucl Med* 2006; 5:S1

205. Thakur ML: In vivo microPET imaging of CCND1 mRNA in breast cancer xenograft model using 64-Cu-labeled antisense peptide nucleic acid peptide probes. *Eur J Nucl Med Mol Imaging* 2006; 33:S219
206. Thakur ML: Peptides and peptide nucleic acids for PET imaging: Synthesis, evaluation and applications. *World J Nucl Med* 2006; 5:S18.
207. Thakur ML, Zhang K, Aruva M, Shanthly N, Ratan S, Patel C, Cardi C, Wickstrom E: Targeting VPAC1 oncogene receptors for PET imaging of breast cancer. *World J Nucl Med* 2006; 5:S29
208. Verma SK, Mitchell DG, Choi D, Bergin D, Navarro V, McGowan C, et al: Hepatocellular carcinoma with delayed diagnosis due to indeterminate or false negative MRI: Clinical impact. *Proceedings of the 92nd Scientific Assembly and Annual Meeting of the Radiological Society of North America*, Chicago, IL, November-December 2006.
209. Vora S, Kurtz AB: ACR Case in Point: Adrenal Myelolipoma, September 21, 2006.
210. Vora S, Kurtz AB: ACR Case in Point: Pneumomediastinum, August 11, 2006.
211. Wahba P, Baltarowich OH: ACR Case in Point: Ovarian torsion, June 27, 2007.
212. Wahba PR, Halpern EJ, O'Kane PL: Significant incidental extracardiac findings on cardiac CTA. *Proceedings of the 1st Annual Scientific Meeting of the Society of Cardiovascular Computed Tomography*. Washington, DC, July 2006.
213. Wahba PR, Halpern EJ, O'Kane PL: Significant incidental extracardiac findings on cardiac CTA. *Proceedings of the 92nd Scientific Assembly and Annual Meeting of the Radiological Society of North America*, Chicago, IL, November-December 2006.
214. Yamamoto A, Chervoneva I, Sullivan K, Eschelmann D, Gonsalves C, Mastrangelo MJ, Berd D, Feeney K, Terai M, Sato T: Prognostic factors for survival after embolization of hepatic metastases in uveal melanoma. *J Clin Oncol* 2007; 25:487S.
215. Yoshikawa T, Kawamitsu H, Mitchell DG, Ohno Y, Fujii M, Sugimura K: Abdominal diffusion-weighted imaging and ADC measurements: Current status, pitfalls, and limitations. *Proceedings of the 92nd Scientific Assembly and Annual Meeting of the Radiological Society of North America*, Chicago, IL, November-December 2006.
216. Yoshikawa T, Kawamitsu H, Ohno Y, Mitchell DG, Fujii M: Abdominal ADC measurements using parallel imaging technique. *Proceedings of the 92nd Scientific Assembly and Annual Meeting of the Radiological Society of North America*, Chicago, IL, November-December 2006.
217. Zhang K, Shanthly N, Aruva MR, Cardi C, Wickstrom E, Thakur ML: Role of IGF1R in PET hybridization imaging of ER positive human breast cancer xenografts using 64-Cu-PNA. *J Nucl Med* 2007; 48(P):73.
218. Zhang S, Halpern EJ: Optimal EKG phases for coronary artery assessment with cardiac CT angiography. *Proceedings of the 92nd Scientific Assembly and Annual Meeting of the Radiological Society of North America*, Chicago, IL, November-December 2006.

219. Zhang S, Halpern E, Levin D: Comparison study of coronary CTA with conventional invasive coronary angiogram. *AJR* 2007; 188:A5.
220. Zoga AC, Kavanagh EC, Omar IM, Koulouris G, Morrison WB, Domesek JM: MRI findings in activity related groin pain, athletic pubalgia, and the "sports hernia" with surgical correlation. *Proceedings of the 92nd Scientific Assembly and Annual Meeting of the Radiological Society of North America*, Chicago, IL, November-December 2006.

FORMAL SCIENTIFIC PRESENTATIONS

OKSANA H. BALTAROWICH, M.D.

- July 15, 2006 Seminar in Ultrasound Practice, Abbott Northwestern Hospital, Minneapolis, MN
- “Tips for your OB/GYN ultrasound practice”
- August 16, 2006 Friends of Ukraine Radiology Conference, Live Interaction Collaboration Demonstration, linking Ukraine, Philadelphia, PA, and other US sites
- “Sonographic evaluation of RLQ pain in women”
- August 30, 2006 1st International Web-Conference of the World Federation of Ukrainian Medical Associations, linking Ukraine and Philadelphia, PA
- “Sonographic evaluation of gastrointestinal causes of RLQ pain”
- November 26-
December 1, 2006 92nd Scientific Assembly and Annual Meeting of the Radiological Society of North America, Chicago, IL
- “Evaluation of the effectiveness of an ultrasound training program for physicians from the Caribbean, Central and South America”
- March 15-18, 2007 Annual Convention of the American Institute of Ultrasound in Medicine, New York, NY
- “Assessment of an ultrasound training program for physicians from the Caribbean, Central and South America”
- April 13-15, 2007 2nd Abu Dhabi 2-3-4D Ultrasound Conference: Practical Approach to Diagnostic Ultrasound, Abu Dhabi, UAE
- “Sonography of the diffusely abnormal liver”
 - “Ultrasound evaluation of the biliary system”
 - “Liver Doppler”
 - “Ultrasound evaluation of the RLQ”
 - “How to avoid pitfalls in transvaginal sonography of the pelvis”
 - “Sonography of uterine myometrial disorders”
 - “Diagnostic pitfalls and challenges of ectopic pregnancy”
 - “Differential diagnosis of adnexal masses”
- May 1-4, 2007 The Leading Edge in Diagnostic Ultrasound, sponsored by Thomas Jefferson University Hospital, Atlantic City, NJ
- “Advances in OB/GYN” (moderator)
 - “Abdominal ultrasound – Part I (liver, gallbladder, and bile ducts)”
 - “Abdominal ultrasound – Part II (pancreas and spleen)”
 - “Sonohysterography: Getting started”

DIANE BERGIN, M.D.

- November 26-
December 1, 2006 92nd Scientific Assembly and Annual Meeting of the
Radiological Society of North America, Chicago, IL
- "Mapping marrow edema pattern related to extrinsic ligament attachment on MRI in setting of acute wrist injury"
- May 6-11, 2007 107th Annual Meeting of the American Roentgen Ray Society,
Orlando, FL
- "MRI extrinsic ligaments of the wrist with surgical correlation"
 - "MRI of the coracohumeral ligament on unenhanced MRI"

DIANE DEELY, M.D.

- October 21-22, 2006 Jefferson Musculoskeletal Imaging Symposium: Imaging
Orthopaedic Dilemmas and Advances, Thomas Jefferson
University, Philadelphia, PA
- "Percutaneous image guided orthopedic intervention"
- June 23-24, 2007 Jefferson Musculoskeletal Imaging Symposium: Anatomic and
Imaging Correlation in the Upper and Lower Extremity, Thomas
Jefferson University, Philadelphia, PA
- "Rapid MR interpretation using pattern recognition"
 - "MDCT imaging of the knee and shoulder"

RICK FELD, M.D.

- May 1-4, 2007 The Leading Edge in Diagnostic Ultrasound, sponsored by Thomas
Jefferson University Hospital, Atlantic City, NJ
- "CT versus ultrasound in the female pelvis"
 - "Scrotal Doppler"
 - "Interventional US including thyroid biopsy: A practical guide"

ADAM FLANDERS, M.D.

- August 24-26, 2006 18th Annual Meeting of the Eastern Neuroradiological Society,
Cambridge, MD
- "MRI biomarkers for spinal cord injury"
- September 26-30, 2006 21st Annual Meeting of the North American Spine Society Seattle,
WA
- "Utility of MRI as a biomarker for spinal cord injury"
- October 12-14, 2006 Neuroradiology: The Essentials, Philadelphia, PA
- "Spine: Anatomy and degenerative disease"
 - "Vascular diseases of the spinal cord"

- November 26-
December 1, 2006 92nd Scientific Assembly and Annual Meeting of the Radiological Society of North America, Chicago, IL
- "Spine: Injury" (co-moderator)
 - "Image processing, analysis and navigation" (co-moderator)
 - "Essentials of spine imaging"
 - "RadLex for radiologists: A clinical introduction to a new lexicon for radiology"
 - "Using the RSNA teaching file" (hands-on workshop)
- February 22-25, 2007 Annual Symposium of the American Society of Spine Radiology, Marco Island, FL
- "MR of adult spinal trauma"
- March 22-23, 2007 6th Annual Cerebrovascular Update Conference, sponsored by Thomas Jefferson University Hospital, Philadelphia, PA
- "Update on imaging of neurovascular disease"
- June 7-10, 2007 Annual Meeting of the Society for Imaging Informatics in Medicine, Providence, RI
- "Regional health information organizations (RHIOs)" (course director)
- June 9-15, 2007 45th Annual Meeting of the American Society of Neuroradiology, Chicago, IL
- "Teaching file creation using the MIRC software suite"
 - "Cervical myelography from degenerative causes" (course director)

FLEMMING FORSBERG, PH.D.

- August 30-
September 2, 2006 6th International Symposium on Therapeutic Ultrasound, Oxford, England
- "Using a commercial ultrasound contrast agent for viral-mediated gene transfer in vitro and in vivo" (poster)
- October 3-6, 2006 IEEE International Ultrasonics Symposium, Vancouver, Canada
- "Assessing angiogenesis in murine glioma and breast tumor models with contrast-enhanced ultrasound imaging"
 - "Quantitative analysis of contrast enhanced subharmonic breast images" (poster)
- November 26, 2006 International Customer Symposium, Toshiba America Medical Systems, Chicago, IL
- "Comparing fundamental ultrasound imaging to tissue harmonic imaging and differential tissue harmonic imaging in the liver"
- November 26-
December 1, 2006 92nd Scientific Assembly and Annual Meeting of the Radiological Society of North America, Chicago, IL
- "Comparing contrast enhanced US and pathology measures of breast lesion vascularity"

- December 9-10, 2006 8th International Symposium on Ultrasound Contrast Imaging, Tokyo, Japan
- "Subharmonic breast imaging in vivo: First experiences in women"
 - "Ultrasound contrast imaging of sentinel lymph nodes"
- March 10, 2007 16th Annual Diagnostic Ultrasound Symposium, Toledo, OH
- "Advances in ultrasound imaging: Marketing or reality?"
- March 15-18, 2007 Annual Convention of the American Institute of Ultrasound in Medicine, New York, NY
- "Comparing hepatic fundamental, tissue harmonic and differential tissue harmonic imaging"
 - "Ultrasound imaging of angiogenesis"
- May 1-4, 2007 The Leading Edge in Diagnostic Ultrasound, sponsored by Thomas Jefferson University Hospital, Atlantic City, NJ
- "Contrast agents symposium" (moderator)
 - "Contrast imaging for monitoring the anti-angiogenic compound VEGF trap"
 - "Prostate cancer detection with microflow imaging"
 - "Cumulative maximum intensity subharmonic imaging: A new diagnostic tool"
- May 14-17, 2007 Annual Meeting of the World Conference on Interventional Oncology, Washington DC
- "Ultrasound imaging methods for interventional procedures"
- May 16-18, 2007 32nd International Symposium on Ultrasonic Imaging and Tissue Characterization, Arlington, VA
- "Breast lesion characterization using contrast enhanced subharmonic and cumulative maximum intensity breast images"
 - "Excitation enhanced imaging: In vitro and in vivo results"
- June 8, 2007 Visiting Professor, PG Radiology Program, University of Zulia, Servicio Autonomo Hospital Universitario de Maracaibo, Maracibo, Venezuela
- "Advances in ultrasound imaging: Marketing or reality?"

DAVID FRIEDMAN, M.D.

- August 24-26, 2006 18th Annual Meeting of the Eastern Neuroradiological Society, Cambridge, MD
- "Imaging of adhesive arachnoiditis"
- February 22-25, 2007 Annual Symposium of the American Society of Spine Radiology, Marco Island, FL
- "Mobile intradural schwannoma of the cauda equina"
 - "Imaging of adhesive arachnoiditis"

- June 9-15, 2007 45th Annual Meeting of the American Society of Neuroradiology, Chicago, IL
- "Participation of an academic neuroradiology division in a peer-to-peer ordering support program (HealthHelp RadConsult): Early results"

ERIC GINGOLD, PH.D.

- September 20-21, 2006 Cardiac CT, Thomas Jefferson University, Philadelphia, PA
- "Resolution and dose in cardiac CT"
 - "Choosing a scanner"

- March 21-22, 2007 Cardiac CT, Thomas Jefferson University, Philadelphia, PA
- "Resolution and dose in cardiac CT"
 - "Choosing a scanner"

- May 26-29, 2007 24th Annual Meeting of the American College of Medical Physics, Baltimore, MD
- "Managing radiation dose in the transition from screen-film to digital mammography"

BARRY B. GOLDBERG, M.D.

- October 3-6, 2006 18th Congress of the European Federation of Societies for Ultrasound in Medicine and Biology, Bologna, Italy
- "Ultrasound: A look into the future"
 - "Evaluation of the effectiveness of an ultrasound physician training program"
 - "Lymphosonography of sentinel lymph nodes in a melanoma tumor model: A comparison to lymphoscintigraphy"

- October 17-18, 2006 Strategic Planning for the Future of Ultrasound in Radiology Seminar, Society of Radiologists in Ultrasound, San Francisco, CA
- "The role of contrast agents in ultrasound: 10 years hence"

- October 24, 2006 NCI Pediatric Oncology Imaging Frontiers Workshop, Washington, DC
- "Ultrasound contrast agents in pediatric imaging"

- November 16, 2006 Visiting Professor Lecture Series, US Food and Drug Administration, Center for Drug Evaluation and Research, Silver Spring, MD
- "American Institute of Ultrasound in Medicine recommendations for contrast-enhanced liver ultrasound imaging clinical trials – Training"

- November 26-
December 1, 2006 92nd Scientific Assembly and Annual Meeting of the Radiological Society of North America, Chicago, IL
- "Responding to the needs of radiologic education in developing countries" (moderator)

- “Variability in lymphatic drainage from melanoma tumors: The effect of tumor location on the detection of sentinel lymph nodes”
- March 15-18, 2007 Annual Convention of the American Institute of Ultrasound in Medicine, New York, NY
- “Variability in lymphatic drainage from melanoma tumors: The effect of tumor location on the detection of sentinel lymph nodes”
- May 1-4, 2007 The Leading Edge in Diagnostic Ultrasound, sponsored by Thomas Jefferson University Hospital, Atlantic City, NJ
- “Advances in ultrasound imaging”

ANGELA GOPEZ, M.D

- October 21-22, 2006 Jefferson Musculoskeletal Imaging Symposium: Imaging Orthopaedic Dilemmas and Advances, Thomas Jefferson
- “MR imaging of the rotator cuff”
 - “MRI elbow”
 - “MRI knee I: Cartilage and collateral ligaments”
 - “MRI of post-operative menisci and cartilage”
- February 24-26, 2007 9th Annual Hand Surgery Symposium, Philadelphia, PA
- “Imaging in the evaluation and diagnosis of hand and wrist tumors”
- June 23-24, 2007 Jefferson Musculoskeletal Imaging Symposium: Anatomic and Imaging Correlation in the Upper and Lower Extremity, Thomas Jefferson University, Philadelphia, PA
- “Optimizing shoulder imaging – Protocols, arthrography, and low-field strength magnets”
 - “MR of shoulder instability”
 - “Cartilage confusion: Chondrosis, osteochondral defects, and osteochondral lesions”

ETHAN J HALPERN, MD

- September 25, 2006 Department of Medicine Grand Rounds, Graduate Hospital, Philadelphia, PA
- “Cardiac CT: Assessment of the aortic and mitral valves. Clinical applications of coronary CT angiography”
- September 26, 2006 Visiting Professor, Department of Radiology, Bryn Mawr Hospital, Bryn Mawr, PA
- “Arterial Doppler”
- October 4, 2006 Visiting Professor, Department of Radiology, Mercy Catholic Medical Center, Philadelphia, PA
- “Overview of cardiac CT”

- November 15, 2006 Intercity Grand Rounds, Wayne State University – Detroit Medical Center, Detroit, MI
- “CT evaluation of coronary anatomy and cardiac function”
- November 26-
December 1, 2006 92nd Scientific Assembly and Annual Meeting of the Radiological Society of North America, Chicago, IL
- “Assessment of the aortic valve area and morphology during cardiac CT angiography”
 - “Microflow imaging of the prostate during contrast-enhanced ultrasound: Initial experience”
 - “Optimizing coronary CT angiography”
- January 18, 2007 Philips Medical Systems, Haifa, Israel
- “Cardiac CT: State of the art and vision for the future”
- January 21, 2007 Visiting Professor, Hadassah Hospital, Ein Karem, Jerusalem, Israel
- “CT evaluation of cardiac anatomy and function”
- April 18, 2007 Prostate Cancer Imaging Strategy, sponsored by AdMeTech Foundation, Latham Hotel, Washington, DC
- “Ultrasound detection and treatment of prostate cancer – Areas for future research”
- May 10, 2007 Department of Medicine Grand Rounds, Doylestown Hospital, Doylestown, PA
- “Cardiac CT – State of the art”

CHARLES M. INTENZO, M.D.

- November 26-
December 1, 2006 92nd Scientific Assembly and Annual Meeting of the Radiological Society of North America, Chicago, IL
- “The role of SPECT in the localization of parathyroid adenomas within the neck: It’s not only for the mediastinum”
 - “Is routine thyroid function testing warranted in diffuse thyroid uptake of 18-FDG?”
 - “Are emergency room physicians justified in ordering lung V/Q scans on asthmatic patients evaluated in the emergency room for an asthmatic attack?”

DAVID KARASICK, M.D.

- April 13, 2007 Department of Radiology Grand Rounds, Georgetown University, Washington, DC
- “Imaging of complications of spinal fusion”

SUNG M. KIM, MD

- November 26-
December 1, 2006
- 92nd Scientific Assembly and Annual Meeting of the Radiological Society of North America, Chicago, IL
- "Detection of recurrent disease in the patient with a negative diagnostic iodine scan and rising thyroglobulin: Combined strategy with US and PET scan"
 - "Limitation of dual-time point PET imaging to assess the likelihood of malignancy in the patients treated with radiation"
 - "Clinical relevance of discordant FDG-PET findings of bone metastases with bone scan or CT" (poster)
- June 2-6, 2007
- 54th Annual Meeting of the Society of Nuclear Medicine, Washington, DC
- "PET evaluation of bone metastases: Degree of hypermetabolic activity of FDG-PET depends on the degree of osteolytic or osteoblastic component in the bone metastases" (poster)

ALFRED B. KURTZ, M.D.

- May 1-4, 2007
- The Leading Edge in Diagnostic Ultrasound, sponsored by Thomas Jefferson University Hospital, Atlantic City, NJ
- "Obstetrics part I (1st trimester, ectopic pregnancy)"
 - "Obstetrics part II (2nd and 3rd trimester)"

SONG LAI, PH.D.

- April 14-19, 2007
- Annual Meeting of the American Association of Neurological Surgeons, Washington DC
- "Anaplastic astrocytoma subtypes with different imaging and prognostic qualities"
- May 19-25, 2007
- 15th Scientific Meeting and Exhibition of the International Society for Magnetic Resonance in Medicine, Berlin, Germany
- "A robust approach for correction of susceptibility artifacts in EPI"
 - "Paint and track: Surface-based ROI selection in DTI fiber tracking"

DAVID C. LEVIN, M.D.

- July 21-23, 2006
- American College of Radiology Intersociety Summer Conference, Banff, Alberta, Canada
- "Pay for performance"
- July 26, 2006
- Guthrie Clinic, Sayre, PA
- "Economics and politics of coronary CT angiography"

- October 20-22, 2006 Annual Meeting of the California Radiological Society, Newport Beach, CA
- “3 coronary CTA: Normal anatomy, anatomic variations, and congenital anomalies”
 - “Who should be doing coronary CTA – radiologists or cardiologists?”
- October 26-29, 2006 21st Annual Economics of Diagnostic Imaging 2006: National Symposium, Arlington, VA
- “Turf wars in radiology: How to prepare yourself for what’s ahead in 2007”
 - “Accreditation programs in diagnostic imaging by health plans and Medicare: What are they? What are the implications?”
 - “Recent trends in utilization of diagnostic imaging”
- November 26-
December 1, 2006 92nd Scientific Assembly and Annual Meeting of the Radiological Society of North America, Chicago, IL
- “Radiology by nonradiologists: Problems and solutions” (categorical course)
 - “What every radiologist needs to know about the coronary arteries” (categorical course)
 - “Changes in recent years in the utilization patterns of noncardiac thoracic imaging”
 - “Utilization of breast imaging in the U.S. Medicare population: Recent trends”
 - “The effect of the introduction of MR and CT angiography on utilization of catheter angiography for peripheral vascular disease”
 - “Comparison of workload trends in musculoskeletal imaging among radiologists and orthopedic surgeons between 2000 and 2004”
 - “Self-referral in diagnostic imaging: What are the problems associated with it and what can be done about it?”
- March 1, 2007 Michigan Radiological Society, Detroit, MI
- 77th Preston Hickey Lecture
- March 1, 2007 Wayne State University School of Medicine/Detroit Medical Center, Detroit, MI
- “What every radiologist needs to know about coronary artery disease”
- March 2, 2007 William Beaumont Hospital, Detroit, MI
- “What every radiologist needs to know about coronary artery disease”
- April 18, 2007 Presentation to State Legislators, Payers, Other Policymakers, and News Media, Arizona Radiological Society, Phoenix, AZ
- “Self-referral in diagnostic imaging – The problems associated with it and what can be done about it”

- May 7-9, 2007 Radiology Business Management Association Radiology Summit, St. Louis, MO
- “What should radiologists’ role be in coronary CT angiography and other advanced cardiac imaging?”
 - “Recent trends in utilization of the major imaging modalities”

ANNA LEV-TOAFF, M.D.

- September 7-8, 2006 Introduction to 3D/4D OB/GYN Ultrasound, Gulfcoast Ultrasound Institute, Tampa, FL
- “Understanding uterine malformations”
 - “GYN overview: 3D ultrasound as a problem solving tool”
 - “Sonohysterography: 2D & 3D applications”
 - “Case studies in gynecologic ultrasound”
- September 15-17, 2006 National Conference on OB/GYN Ultrasound, Chicago, IL
- “Three-dimensional ultrasound in the gynecology patient”
 - “Saline infusion sonohysterography”
- January 9, 2007 Department of Radiology Grand Rounds, Hospital of the University of Pennsylvania, Philadelphia, PA
- “CT colonography”
- February 25-
March 2, 2007 12th Annual Snowmass 2007: Multislice CT in Clinical Practice, Snowmass Village, CO
- “Challenging cases in abdominal and pelvic CT”
 - “CT colonography”
 - “CT of the gastrointestinal tract”
 - “CT in obstetrics and gynecology”
 - “CT colonography: Workstation tutorial – Lessons from practice”
- March 15-18, 2007 Annual Convention of the American Institute of Ultrasound in Medicine, New York, NY
- “Value of 3-dimensional sonography in women with intrauterine devices”
- May 1-4, 2007 The Leading Edge in Diagnostic Ultrasound, sponsored by Thomas Jefferson University Hospital, Atlantic City, NJ
- “Gynecologic ultrasound”
 - “3D ultrasound in gynecology”
- May 6-11, 2007 107th Annual Meeting of the American Roentgen Ray Society, Orlando, FL
- “CT colonography in older patients with incomplete conventional colonoscopy or contraindication to colonoscopy”

JI-BIN LIU, M.D.

- October 14-16, 2006 International Musculoskeletal and Interventional Ultrasound Symposium, Beijing, China
- “Interventional ultrasound: A review”
 - “New developments of US-guided ablation therapy”
 - “Laparoscopic ultrasound: Its role in laparoscopic surgery”
 - “Intraoperative ultrasound: Its role for renal tumor surgery”
 - “Sonohysterography: Technical considerations and clinical applications”
- November 2-5, 2006 11th Prouts Neck Prostate Cancer Meeting, Prouts Neck, ME
- “Radiofrequency ablation of prostate monitored by contrast-enhanced US”
- February 27, 2007 Drexel-Jefferson Academic Alliance for Biomedical Engineering, Philadelphia, PA
- “Interventional ultrasound: A review”
 - “Laparoscopic ultrasound”
- March 15-18, 2007 Annual Convention of the American Institute of Ultrasound in Medicine, New York, NY
- “Contrast-enhanced ultrasound for guiding and monitoring ethanol ablation of canine prostates”

CHRISTOPHER R. B. MERRITT, M.D.

- May 1-4, 2007 The Leading Edge in Diagnostic Ultrasound, sponsored by Thomas Jefferson University Hospital, Atlantic City, NJ
- “Breast ultrasound physics”
 - “BIRADS lexicon – Diagnostic criteria”
 - “Basic imaging”
 - “Understanding Doppler”

DONALD G. MITCHELL, M.D.

- November 26-
December 1, 2006 92nd Scientific Assembly and Annual Meeting of the Radiological Society of North America, Chicago, IL
- “Case-based review of body MRI”
 - “Optimal techniques for MRI of the liver at 1.5T”
 - “MRI delineation of cervical cancer and guidance for intracavitary brachytherapy”
 - “Early invasive cervical cancer: MRI and CT predictors of occult lymphatic metastases in the ACRIN 6651/GOG 183 Intergroup Study”
 - “Focal liver lesions: ADC measurement of abdominal organs and lesions using parallel imaging technique”

WILLIAM MORRISON, M.D.

- August 27-30, 2006 15th Annual Current Issues of Magnetic Resonance Imaging in Orthopedics and Sports Medicine, San Francisco, CA
- “Lower extremity osteomyelitis”
 - “Ankle and foot” (panel discussion)
- Sept 10-15, 2006 Annual Meeting of the International Skeletal Society Vancouver, British Columbia, Canada
- “Provocative MR imaging of the musculoskeletal system” (refresher course)
- Sept 19, 2006 Long Island Radiological Society, Long Island, NY
- “MR imaging of osteomyelitis”
- October 12-15, 2006 Annual Meeting of the Colombian Association of Radiologists, Cartagena, Colombia
- “MRI of the elbow”
 - “MR of muscle”
 - “MRI of musculoskeletal infection”
 - “MR arthrography”
 - “MRI of the hip: Impingement and dysplasia”
- October 21-22, 2006 Jefferson Musculoskeletal Imaging Symposium: Imaging Orthopaedic Dilemmas and Advances, Thomas Jefferson
- “MRI of the shoulder – Instability”
 - “MRI of the hip”
 - “MRI of the knee: Menisci and cruciate ligaments”
 - “MR imaging of the athlete”
 - Panel discussion
- October 23, 2006 Visiting Professor, Department of Radiology, Johns Hopkins University, Baltimore, MD
- “Hip dysplasia and impingement”
- November 26-
December 1, 2006 92nd Scientific Assembly and Annual Meeting of the Radiological Society of North America, Chicago, IL
- “MR imaging of the postoperative knee and shoulder with orthopedic and radiologic correlation” (refresher course)
 - “Musculoskeletal: Practice issues and imaging techniques”
 - “Musculoskeletal biopsy: Utilization and provider distribution in the United States”
- January 10, 2007 Department of Radiology, Albert Einstein Medical Center, Philadelphia, PA
- Boards review
- January 17-25, 2007 9th International Magnetic Resonance Imaging Course, Riyadh, Saudi Arabia
- “MRI of the knee menisci”
 - “Direct vs. indirect MR arthrography”
 - “Imaging of arthritis”
 - “MRI of sports injuries”

- "MRI of the diabetic foot"
 - "Imaging of shoulder instability"
- February 14, 2007 Armed Forces Institute of Pathology, Washington, DC
- "MRI of the elbow"
- February 26-28 2007 Clinical Issues for 2007, Radiological Society of North America
Refresher Course, Phoenix, AZ
- "Imaging of the post operative knee"
- March 4, 2007 Musculoskeletal MRI 2007, Gold Coast, Queensland, Australia
- "MR of shoulder instability: Tips to tell labral variation from tear"
 - "MRI of the elbow"
 - "Musculoskeletal tumors and tumor like conditions"
 - "MR imaging of cartilage"
 - "MRI of the hip: When should I call a labral tear?"
 - "MRI of the spine: Nomenclature of disc disease and injury patterns"
- April 18, 2007 Armed Forces Institute of Pathology, Washington, DC
- "MRI of the elbow"
- April 20-22, 2007 61st Annual Meeting of the Pacific Northwest Radiological Society,
Portland, OR
- "MRI of the ankle"
 - "Adult hip dysplasia"
- April 26-29, 2007 Musculoskeletal and Neuro Imaging 2007, Colorado Springs, CO
- "MR imaging of cartilage"
 - "MR imaging of the glenohumeral joint instability"
 - "Imaging of the wrist and hand"
 - "MR imaging of the elbow"
 - "MR imaging of the hip and pelvis"
 - "MR arthrography"
- May 6-11, 2007 107th Annual Meeting of the American Roentgen Ray Society,
Orlando, FL
- "MRI of the diabetic foot" (categorical course)
 - "Intraosseous ganglia of the knee: MR imaging characteristics"
- May 19-25, 2007 15th Scientific Meeting and Exhibition of the International Society
for Magnetic Resonance in Medicine, Berlin, Germany
- "MRI and CT of the post-operative shoulder" (categorical course)
 - "Use of simulated weight-bearing for MR evaluation of ankle and hindfoot mechanics: A feasibility study"
- June 1, 2007 Georgetown University Hospital, Washington, DC
- Boards review

- June 23-24, 2007 Jefferson Musculoskeletal Imaging Symposium: Anatomic and Imaging Correlation in the Upper and Lower Extremity, Thomas Jefferson University, Philadelphia, PA
- "Imaging of the sternoclavicular and acromioclavicular joints"
 - "MRI of the menisci: Pre- and post-operative assessment"
 - "How the experts take a case"

LEVON NAZARIAN, M.D.

- October 13, 2006 Visiting Professor, Peking University Third Hospital, Beijing, China
- "General concepts of musculoskeletal ultrasound"
- October 14-16, 2006 International Musculoskeletal and Interventional Ultrasound Symposium, Beijing, China
- "Review of musculoskeletal US"
 - "Shoulder US: Common pathology"
 - "Foot and ankle US: Anatomy and pathology"
 - "Knee and hip US: Anatomy and pathology"
 - "Interventional musculoskeletal US"
- October 19-22, 2006 Advances in Sonography, 16th Annual Meeting and Postgraduate Course of the Society of Radiologists in Ultrasound, San Francisco, CA
- "Ultrasound of the ankle and foot"
- November 15, 2006 Department of Radiology Grand Rounds, Albert Einstein Medical Center, Philadelphia, PA
- "General concepts of musculoskeletal ultrasound"
- December 17, 2006 Musculoskeletal Ultrasound Seminar, sponsored by the Fundacion de Educacion Medica Continuada of PR, Bayamon, Puerto Rico
- "General concepts of musculoskeletal ultrasound"
 - "Ultrasound of the shoulder"
 - "Ultrasound of the elbow"
 - "Ultrasound of the hand and wrist"
 - "Ultrasound of the hip and knee"
 - "Ultrasound of the foot and ankle"
- February 24-26, 2007 9th Annual Hand Surgery Symposium, Philadelphia, PA
- "Imaging of tennis elbow: Ultrasound / MRI"
- March 15-18, 2007 Annual Convention of the American Institute of Ultrasound in Medicine, New York, NY
- "Organizing a musculoskeletal US practice: The prerequisites"
 - "Prerequisites for the diagnostic and therapeutic standardized musculoskeletal US examination"
 - "Interventional musculoskeletal US update" (meet the professor)

- May 1-4, 2007 The Leading Edge in Diagnostic Ultrasound, sponsored by Thomas Jefferson University Hospital, Atlantic City, NJ
- “Musculoskeletal ultrasound” (moderator)
 - “Introduction to musculoskeletal ultrasound”
 - “To inject or not to inject – Interventional ultrasound”
 - “Foot and ankle”
 - “Ultrasound of soft tissue masses”
 - “Color Doppler in musculoskeletal ultrasound”
 - “Musculoskeletal ultrasound”
- May 6-11, 2007 107th Annual Meeting of the American Roentgen Ray Society, Orlando, FL
- “Subscapularis tendon tears: A common sonographic finding in symptomatic post-arthroplasty shoulders”

LAURENCE NEEDLEMAN, M.D.

- October 19-22, 2006 Advances in Sonography, 16th Annual Meeting and Postgraduate Course of the Society of Radiologists in Ultrasound, San Francisco, CA
- “Plenary session: Communication” (moderator)
 - “Unusual (and a few usual) arterial lesions”
- November 17-18, 2006 Advances in Vascular Imaging and Diagnosis 18th Symposium and Workshops on Management and Clinical Issues, Cleveland Clinic, New York, NY
- “Panel on aorta and visceral vascular” (moderator)
 - “How best to image the renal arteries: CT, MRA or Duplex ultrasound: Competing or complementary modalities”
 - “Interesting cerebrovascular case studies”
- January 28-
February 1, 2007 19th International Symposium on Endovascular Therapy, Hollywood, FL
- “Advanced carotid Duplex interpretation: Beyond the routine cases”
 - “Unusual cerebrovascular abnormalities: Case presentations”
 - “Controversies in lower extremity venous Duplex”
 - “Screening for PVD and AAA: Who, when and how”
 - “Panel discussion: Duplex screening; the role of Duplex in the era of MRA and CTA”
- March 15-18, 2007 Annual Convention of the American Institute of Ultrasound in Medicine, New York, NY
- “Venous insufficiency: Diagnosis and management”
- March 24-25, 2007 Color Doppler Ultrasound Seminar, Medical Technology Management Institute, Chicago, IL
- “How well do you know Doppler: A quiz”
 - “Lower extremity veins, DVT and venous insufficiency”
 - “Carotid arteries: Plaque, stenosis and stents”
 - “Doppler jeopardy”
 - “Lower extremity arteries: Exam technique and clinical role”

- April 29-
May 2, 2007 Ultrasound/Women's Imaging, sponsored by the Department of Radiology, Harvard Medical School, Boston, MA
- "Abdominal Doppler (excluding the liver)"
 - "Renal ultrasound and other imaging"
 - "Controversies in venous ultrasound"
- May 1-4, 2007 The Leading Edge in Diagnostic Ultrasound, sponsored by Thomas Jefferson University Hospital, Atlantic City, NJ
- "Vascular ultrasound imaging and Doppler" (moderator)
 - "Spectral Doppler: Why do waveforms work the way they do?"
 - "Non atherosclerotic arterial disease"
 - "Upper extremity venous evaluation"
 - "Vascular (arterial and venous)"
- May 18-20, 2007 5th Annual Vascular Ultrasound Meeting, Adriatic Vascular Ultrasound Society, Portoroz, Slovenia
- "Ultrasound of peripheral veins"
 - "Doppler of carotid and vertebral arteries"
 - "Cases analysis"
- June 7-9, 2007 30th Annual Conference of the Society of Vascular Ultrasound, Baltimore MD
- "Hemodynamics session panel" (moderator)
 - "Carotid waveform analysis: Beyond peak systolic velocity"

PATRICK O'KANE, M.D.

- Jan 16-20, 2007 Department of Radiology, University of Arizona, Tucson, AZ
- "Introduction to Doppler ultrasound principles"
 - "Doppler ultrasound applications"
 - Boards review
- May 6-11, 2007 107th Annual Meeting of the American Roentgen Ray Society, Orlando, FL
- "Comparison of thyroid nodule detectability using 7.5 MHz and 10MHz systems: Results of the Ukrainian-American study of thyroid cancer following the Chernobyl accident"
- June 11-13, 2007 7th Tri-national Meeting of the Advisory Group on Implementation of International Chernobyl Thyroid Projects, sponsored by the National Institutes of Health, Kiev, Ukraine
- "The significance of ultrasound conspicuity in detection rates of thyroid cancer subtypes"

LAURENCE PARKER, PH.D.

- November 26-
December 1, 2006 92nd Scientific Assembly and Annual Meeting of the Radiological Society of North America, Chicago, IL
- "How are rotator cuff patients imaged in the Medicare population?"

- "Utilization of headache evaluation imaging in the Medicare population: 2004"

VIJAY M. RAO, M.D.

- September 27-
October 1, 2006 40th Annual Meeting of the American Society of Head and Neck Radiologists, Phoenix, AZ
- "Imaging of petrous apex"
- October 26-29, 2006 21st Annual Economics of Diagnostic Imaging 2006: National Symposium, Arlington, VA
- "Turf wars in radiology" (seminar)
 - "Recent trends in payments for private office MRI, CT and PET"
 - "Entrepreneurship for hospital-based radiology departments"
- November 26-
December 1, 2006 92nd Scientific Assembly and Annual Meeting of the Radiological Society of North America, Chicago, IL
- "Sinonasal imaging: Normal anatomy, anatomic variants, and inflammation" (categorical course)
 - "Radiology by nonradiologists: Problems and solutions" (categorical course)
 - "Neuroradiology/head and neck: Head and neck: Temporal bone)" (moderator)
 - "Health services, policy, and research: Practice management and quality)" (moderator)
 - "Neuroimaging workload trends in recent years: Comparison between radiologists and neurologists"

KEVIN SULLIVAN, M.D.

- March 1-6, 2007 32nd Annual Scientific Meeting of the Society of Interventional Radiology, Seattle, WA
- "New frontiers in interventional oncology: Diagnosis, treatment, and evaluating response. New drugs for TACE and immunotherapy"
- May 14-17, 2007 Annual Meeting of the World Conference on Interventional Oncology, Washington DC
- "Image-guided interventional therapies for melanoma and other liver metastases"

MATHEW L. THAKUR, PH.D

- September 30-
October 4, 2006 19th European Annual Congress of the European Association of Nuclear Medicine, Athens, Greece
- "In vivo microPET imaging of CCND1 mRNA in breast cancer xenograft model using Cu-64 labeled antisense peptide nucleic acid peptide probes"
 - "Cu-64-peptide PET imaging of VPAC1 oncogene product in breast tumors"

- October 22-27, 2006 9th Congress of the World Federation of Nuclear Medicine & Biology, Seoul, Korea
- “Genomic and proteomic approaches to MI of cancer”
 - “Targeting VPAC1 oncogene receptors for PET imaging of breast cancer”
 - “New PET radiopharmaceuticals and their applications”
 - “Peptides and peptide nucleic acids for PET imaging”
 - “In vivo agents for labeling leukocytes”
- November 11, 2006 Translational Research Symposium, Juntendo University, Tokyo, Japan
- “Molecular imaging future possibilities” (keynote lecture)
- November 9-11, 2006 46th Annual Meeting of the Japanese Society of Nuclear Medicine, Kogoshima, Japan
- “Molecular imaging role in oncologic diagnosis and therapy”
 - “Molecular imaging in nuclear medicine”
- January 31, 2007 IBA Molecular, Louvain-La-Neuve, Belgium
- “PET imaging of hormone dependent cancers: An update”
- March 10, 2007 International Atomic Energy Agency, Vienna, Austria
- “Molecular imaging”

ANNINA WILKES, M.D.

- May 1-4, 2007 The Leading Edge in Diagnostic Ultrasound, sponsored by Thomas Jefferson University Hospital, Atlantic City, NJ
- “Breast ultrasound tutorial” (moderator)
 - “Breast ultrasound: Indicators and anatomy”

SHAOXIONG ZHANG, M.D., PH.D.

- July 13-16, 2006 1st Annual Scientific Meeting of the Society of Cardiovascular Computed Tomography, Washington, DC
- “Assessment of the aortic valve area and morphology during cardiac CTA”
- November 26-
December 1, 2006 92nd Scientific Assembly and Annual Meeting of the Radiological Society of North America, Chicago, IL
- “The optimal ECG phases for coronary artery assessment with gated cardiac CT angiography”
- May 6-11, 2007 107th Annual Meeting of the American Roentgen Ray Society, Orlando, FL
- “Comparison of coronary CTA with conventional invasive coronary angiography”

ADAM C. ZOGA, M.D.

- September 6, 2006 Department of Radiology, Northwestern University Medical Center, Chicago, IL
- "MRI sports ankle injury"
- October 21-22, 2006 Jefferson Musculoskeletal Imaging Symposium: Imaging Orthopaedic Dilemmas and Advances, Thomas Jefferson
- "Shoulder impingement syndromes"
 - "MRI of the ankle"
 - "MRI evaluation of athletic pubalgia"
 - "Direct and indirect MR arthrography"
- November 26-
December 1, 2006 92nd Scientific Assembly and Annual Meeting of the Radiological Society of North America, Chicago, IL
- "Shoulder sports imaging" (refresher course)
- January 9, 2007 Department of Orthopedic Surgery, Philadelphia College of Osteopathic Medicine, Philadelphia, PA
- "Shoulder imaging overview"
- February 26-28 2007 Clinical Issues for 2007, Radiological Society of North America Refresher Course, Phoenix, AZ
- "Shoulder sports imaging"
- February 21, 2007 Department of Radiology Grand Rounds, Hartford Hospital, Hartford, CT
- "MRI of athletic pubalgia and the 'sports hernia'"
- April 30, 2007 Department Grand Rounds, Christiana Hospital, Newark, DE
- "Imaging hip pain in the young adult"
- May 6-11, 2007 107th Annual Meeting of the American Roentgen Ray Society, Orlando, FL
- "Imaging groin pain in the young adult" (keynote lecture)
 - "Hips and more"
- June 8, 2007 8th Annual Philadelphia Sports Medicine Congress, Philadelphia PA
- "MRI findings in athletic pubalgia & 'sports hernia'"
- June 23-24, 2007 Jefferson Musculoskeletal Imaging Symposium: Anatomic and Imaging Correlation in the Upper and Lower Extremity, Thomas Jefferson University, Philadelphia, PA
- "Superior labral tears"
 - "MR imaging of cruciate ligaments: Pre- and post-operative assessment"
 - "Posteromedial and posterolateral corner injuries"

HONORS, EDITORIAL ACTIVITIES, SERVICE TO REGIONAL OR NATIONAL ORGANIZATIONS

OKSANA H. BALTAROWICH, M.D.

- Member, Thyroid Advisory Group for U.S., Belarus and Ukraine Cooperative Studies of Post-Chernobyl Thyroid Disease, National Cancer Institute, National Institutes of Health
- Member, Executive Committee, Friends of Radiology in Ukraine
- Member, Advisory Board, Ukrainian Medical Association of North America, Pennsylvania Chapter
- Chief Proctor, American Board of Radiology September 2006 Written Examinations, Philadelphia, PA
- Member, Advisory Editorial Board, *Ukrainian Radiological Journal*

DIANE BERGIN, M.D.

- Reviewer, *American Journal of Roentgenology*
- Reviewer, *British Journal of Radiology*
- Reviewer, *Medical Science Monitor*

DAVID J. ESCHELMAN, M.D.

- Member, Relative Value Update Advisory Committee, Society of Interventional Radiology
- Member, Editorial and Advisory Board, *Journal of Vascular and Interventional Radiology*
- Abstract Reviewer, 32nd Annual Scientific Meeting, Society of Interventional Radiology

RICK I. FELD, M.D.

- Vice President, Philadelphia Roentgen Ray Society
- Member, Board of Directors, Pennsylvania Radiological Society
- Member, Executive Board, Philadelphia Roentgen Ray Society
- Member, Program Committee, Philadelphia Roentgen Ray Society
- Councilor, Pennsylvania, American College of Radiology
- Associate Editor, *Journal of Ultrasound in Medicine*
- Reviewer, *American Journal of Roentgenology*
- Reviewer, *Clinical Imaging*
- Reviewer, *Journal of American Medical Association*
- Reviewer, *Journal of Clinical Ultrasound*
- Reviewer, *Journal of Ultrasound in Medicine*
- Reviewer, *Journal of Vascular and Interventional Radiology*

ADAM E. FLANDERS, M.D.

- Consultant Neuroradiologist, Geron Corporation
- Chair, Neuroradiology/ENT Subcommittee, RADLEX, Radiological Society of North America
- Co-chair, Medical Imaging Resource Center (MIRC), Radiological Society of North America
- Member, Radiology Informatics Committee, Radiological Society of North America
- Member, Electronic Learning Center, American Society of Neuroradiology
- Member, Informatics Committee, American Society of Spine Radiology
- Member, Audiovisual Committee, American Society of Neuroradiology
- Member, Nominating Committee, American Society of Neuroradiology
- Member, XDS-I Technical Subcommittee, Radiological Society of North America
- Member, Radiological Society of North America -SIIM Educational Panel
- Member, Radiology Informatics Subcommittee, Education Exhibit Committee, Radiological Society of North America
- Member, MRI Committee, RADLEX, Radiological Society of North America
- Abstract Reviewer, InfoRad, Radiological Society of North America
- Associate Editor, Informatics (infoRAD), *Radiographics*
- Imaging Editor, *Yearbook in Ophthalmology*
- Reviewer, *American Journal of Neuroradiology*
- Reviewer, *Journal of Digital Imaging*
- Reviewer, *Neuroradiology*
- Reviewer, *The New England Journal of Medicine*
- Reviewer, *Radiological Society of North America Electronic Journal*

FLEMMING FORSBERG, PH.D.

- Member, Technical Standards Committee, *American Institute of Ultrasound in Medicine*
- Member, Advisory Editorial Board, *Ultrasound in Medicine and Biology*
- Member, Advisory Editorial Board, *Journal of Ultrasound in Medicine*
- Reviewer, *Acoustic Research Letters Online*
- Reviewer, *Circulation*
- Reviewer, *Journal of Ultrasound in Medicine*
- Reviewer, *IEEE Transactions on Medical Imaging*
- Reviewer, *IEEE Transactions on Ultrasonics, Ferroelectronics & Frequency Control*
- Reviewer, *International Journal of Cancer*
- Reviewer, *Medical Engineering & Physics*
- Reviewer, *Medical Physics*
- Reviewer, *Radiology*
- Reviewer, *Veterinary Radiology & Ultrasound*
- Reviewer, *Ultrasonic Imaging*
- Reviewer, *Ultrasound in Medicine and Biology*
- Reviewer, *The Swedish Research Council*
- Reviewer, *Ultrasonics*

DAVID P. FRIEDMAN, M.D.

- Member, Editorial Board, *Current Problems in Diagnostic Radiology*
- Reviewer, *American Journal of Roentgenology*
- Reviewer, *Journal of Computer Assisted Tomography*

GEOFFREY A. GARDINER, JR., M.D.

- Associate Editor, Interventional Radiology Section, *Year Book of Diagnostic Radiology*

ERIC GINGOLD, PH.D.

- Member, Radiography and Fluoroscopy Subcommittee, American Association of Physicists in Medicine
- Member, Task Group 116, Exposure Indicator in Digital Radiography, American Association of Physicists in Medicine
- Member, Task Group 150, Acceptance Testing and Quality Control of Digital Radiograph Systems, American Association of Physicists in Medicine
- Image Quality Phantom Reviewer, MRI Accreditation Program, American College of Radiology
- Associate Editor, *Medical Physics*
- Reviewer, *Medical Physics*
- Reviewer, *Radiology*

BARRY B. GOLDBERG, M.D.

- President, Radiology Outreach Foundation
- Chairman, Archives Committee, American Institute of Ultrasound in Medicine
- Chairman, Archives Committee, World Federation for Ultrasound in Medicine and Biology
- Chairman, Committee on Ultrasound, American College of Radiology Imaging Network
- Chairman, Committee on International Relations and Education, Radiological Society of North America
- Chairman, Outstanding Researcher/Outstanding Educator Award Review Panel, Research and Education Foundation, Radiological Society of North America
- Chair, Education Committee, World Federation for Ultrasound in Medicine and Biology
- Consultant, Diagnostic Ultrasound, Nuclear Medicine Service, Veterans Administration
- Medical Advisor, Ultrasonic Procedures, Blue Shield of Pennsylvania
- Resource Advisor, March of Dimes Birth Defects Foundation
- Consultant, United States - Israel Binational Science Foundation
- Consultant, Ultrasound, Philadelphia Zoo, Philadelphia, Pennsylvania
- Professional Consultant, Medicare, Pennsylvania Blue Shield
- Medical Advisor, Ultrasound, World Health Organization
- Member, Board of Directors, Breast Cancer and Women's Health Ultrasound Foundation
- Member, International Liaison Committee, Ultrasound in Medicine and Biology
- Member, International Organizing Committee, International Congress of the Ultrasonic Examination of the Breast
- Member, Administrative Council, World Federation for Ultrasound in Medicine and Biology
- Member, Awards Committee, American Institute of Ultrasound in Medicine
- Member, Public Information Advisory Board, Radiological Society of North America
- Member, Research and Education Fund Committee, American Institute of Ultrasound in Medicine
- Member, Global Steering Group for Education and Training in Diagnostic Imaging, World Health Organization

- Member, Outstanding Researcher Award Review Panel, Radiological Society of North America Research and Education Foundation
- Member, Past Presidents Committee, American Institute of Ultrasound in Medicine
- Member, Outstanding Research/Educator Award Review Panel, Radiological Society of North America
- Member, Public Information Advisors Network, Radiological Society of North America
- Member, Corporate Advisory Council, Radiological Society of North America
- Member, Education and Research Fund Committee, American Institute of Ultrasound in Medicine
- Member, Presidential Advisory Council, American Institute of Ultrasound in Medicine
- Member, Education Council, Radiological Society of North America
- Member, Research and Education Foundation Grant Program Committee, Radiological Society of North America
- Member, Centennial Committee, Philadelphia Roentgen Ray Society
- Member, Endowment for Education and Research Committee, American Institute of Ultrasound in Medicine
- Member, Committee on International Service, American College of Radiology
- Member, Contrast Agents Panel, American Institute of Ultrasound in Medicine
- Member, Corporate Affairs Committee, Society of Radiologists in Ultrasound
- Representative, Management of Adnexal Masses, American College of Radiology
- Co-Opted Councilor, World Federation for Ultrasound in Medicine and Biology
- Ultrasonography Coordinator, Topics in Radiology, *Journal of American Medical Association*
- Member, International Consultant Committee, *Revista Argentina de Radiologia*
- Associate Editor, *Journal of Ultrasound in Medicine*
- Associate Editor, *Surgical Endoscopy, Ultrasound, and Interventional Techniques*
- Editorial Advisor, *Journal d'Echographie et de Medecine par Ultrasons*
- Editorial Consultant, *Applied Radiology*
- Editorial Consultant, *Chest*
- Editorial Consultant, *Medcom Faculty of Medicine*
- Editorial Consultant, *Pediatrics*
- Member, Editorial Board, *Advances in Echo Enhancement*
- Member, Editorial Board, *Archives of Clinical Imaging*
- Member, Editorial Board, *Journal d'Echographie et de Medecine Ultrasonore*
- Member, Editorial Board, *Journal of Clinical Ultrasound in Medicine*
- Member, Editorial Board, *Journal of Ultrasound in Medicine*
- Member, Editorial Board, *Ultrasound International*
- Member, Editorial Board, *Archives in Clinical Imaging*
- Member, Editorial Board, *Clinics in Diagnostic Ultrasound*
- Member, Editorial Board, *Journal of Surgical Ultrasonology*
- Member, Editorial Board, *Journal of Ultrasound in Medicine and Biology*
- Member, Editorial Board, *Radiologia*
- Member, Editorial Board, *Ultrasound International Journal*
- Member, Editorial Board Committee, *Acta Clinica Croatica*
- Member, Editorial Committee, *Journal Ultrasonido*
- Overseas Editorial Adviser, *Borno Medical Journal*
- Member, Editorial Advisory Board, *West African Journal of Ultrasound*
- Member, Advisory Editorial Board, *Ultrasound in Medicine and Biology*
- Member, Advisory Committee, *Ultrasonidos en Medicina*
- Member, International Editorial Board, *Giornale Italiano di Ecografia Journal*
- Member, International Advisory Board, *Indian Journal of Medical Ultrasound*
- Member, International Advisory Board, *Turkish Journal of Diagnostic and Interventional Radiology*

- Reviewer, *American Journal of Roentgenology*
- Reviewer, *Cancer*
- Reviewer, *Gastroenterology*
- Reviewer, *Gastrointestinal Endoscopy*
- Reviewer, *Health Devices*
- Reviewer, *Journal of the National Cancer Institute*
- Reviewer, *The New England Journal of Medicine*
- Reviewer, *Radiology*
- Certificate of Honor, named as "Fourth Place Radiologist", *Medical Imaging*, 2007

CARIN F. GONSALVES, M.D.

- Reviewer, *Journal of Vascular and Interventional Radiology*
- A. Edward O'Hara, M.D. Award for Excellence in Teaching, Department of Radiology, Thomas Jefferson University, 2007

RICHARD J. GORNIK, M.D.

- Reviewer, Neuroradiology and Spine, *Radiology Case Reports*
(<http://radiology.casereports.net>)

ETHAN J. HALPERN, M.D.

- Member, Ultrasound Committee, American College of Radiology Imaging Network
- Member, Public Information Advisors Network, Radiological Society of North America
- Member, Research Committee, Society of Radiologists in Ultrasound
- Grant Reviewer, Imaging Guided Interventions Study Section, National Institute of Biomedical Imaging and BioEngineering, National Institutes of Health
- Reviewer, *American Journal of Roentgenology*
- Reviewer, *Annals of Internal Medicine*
- Reviewer, *Radiology*
- Reviewer, *Ultrasound in Medicine and Biology*

CHARLES M. INTENZO, M.D.

- Consultant to the Editor, *Radiology*
- Reviewer, *Journal of the American Roentgen Ray Society*
- Reviewer, *Radiographics*
- Reviewer, *Radiology*

DAVID KARASICK, M.D.

- Editor-in-Chief, *Seminars in Musculoskeletal Radiology*
- Reviewer, *American Journal of Roentgenology*
- Reviewer, *Radiology*
- Reviewer, *Skeletal Radiology*

STEPHEN KARASICK, M.D.

- Examiner, Genitourinary Section, American Board of Radiology
- Examiner, Gastrointestinal Section, American Board of Radiology
- Reviewer, *Radiology*
- Reviewer, *American Journal of Roentgenology*

SUNG M. KIM, M.D.

- Member, Executive Council, Program Development Education Funding, Society of Nuclear Medicine
- Member, Computer and Instrument Council, Society of Nuclear Medicine
- Member, Brain Imaging Council, Society of Nuclear Medicine
- Member, Correlative Imaging Council, Society Nuclear Medicine
- Member, Membership Committee, Society of Nuclear Medicine
- Reviewer, *Journal of Nuclear Medicine*
- Reviewer, Nuclear Medicine Subcommittee, Education Exhibit Committee, Radiological Society of North America

ALFRED B. KURTZ, M.D.

- Member, Clinical Standards Committee, American Institute of Ultrasound in Medicine
- Member, Endowment for Research and Education Committee, American Institute for Ultrasound in Medicine
- Member, Editorial Board, *Journal of Ultrasound in Medicine*
- Member, Manuscript Review Panel, *American Journal of Roentgenology*
- Member, Editorial Advisory Board, *Diagnostico Journal*
- Reviewer, *Radiology*
- Reviewer, *Radiographics*

SONG LAI, PH.D.

- Grant Reviewer, Brain Disorders and Clinical Neuroscience Study Section, National Institutes of Health
- Grant Reviewer, In Vivo Imaging and Bioengineering Research Study Section, National Institutes of Health
- Grant Reviewer, National Sciences and Engineering Research Council of Canada
- Abstract Reviewer, 1st Conference of the Chinese Society of Magnetic Resonance in Medicine
- Reviewer, *Human Brain Mapping*
- Reviewer, *IEEE Transactions on Medical Imaging*
- Reviewer, *Journal of Magnetic Resonance Imaging*
- Reviewer, *Magnetic Resonance Imaging*
- Reviewer, *Magnetic Resonance in Medicine*
- Reviewer, *Magnetic Resonance Materials in Biology, Physics and Medicine*
- Reviewer, *Medical Physics*
- Reviewer, *NMR in Biomedicine*
- Reviewer, *NeuroImage*
- Reviewer, *Stroke*

DAVID C. LEVIN, M.D.

- Member, Task Force on Imaging, Pennsylvania Medical Society
- Member, Medicare Coverage Advisory Committee (MCAC), Centers for Medicare and Medicaid Services
- Member, Task Force on Cardiovascular Imaging, American College of Radiology
- Member, Committee on Radiologist Resources of the Commission on Human Resources, American College of Radiology
- Member, Research and Education Foundation Program Committee, Radiological Society of North America
- Member, Advisory Committee on Diagnostic Imaging Policy, American College of Radiology
- Member, Media Spokesperson Group, American College of Radiology
- Member, Editorial Board, *Journal of the American College of Radiology*
- Reviewer, *American Journal of Roentgenology*
- Reviewer, *Radiology*
- Exceptional Reviewer, *Journal of the American College of Radiology*
- 77th Annual Preston Hickey Lecturer, Michigan Radiological Society

ANNA S. LEV-TOAFF, M.D.

- Member, Women's Imaging Appropriateness Criteria, American College of Radiology
- Member, Advisory Panel, Women's Imaging Online, American Roentgen Ray Society
- Member, Editorial Board, *Journal of Ultrasound in Medicine*
- Reviewer, *American Journal of Roentgenology*
- Reviewer, *Radiology*
- Reviewer, *Journal of Ultrasound in Medicine*
- Reviewer, *Ultrasound in Obstetrics and Gynecology*

JI-BIN LIU, M.D.

- Member, Medical Advisory Board, International Certification and Education Accreditation Foundation
- Member, Editorial Board, *Chinese Journal of Medical Imaging Technology*
- Member, Editorial Board, *Journal of Ultrasound in Clinical Medicine*
- Grant Reviewer, National Natural Science Foundation of China
- Reviewer, *Chinese Journal of Ultrasonography*
- Reviewer, *Journal of Clinical Ultrasound*
- Reviewer, *Journal of Ultrasound in Medicine*
- Reviewer, *Ultrasonics*
- Reviewer, *Ultrasound in Medicine and Biology*

LYNN LUCAS-FEHM, M.D.

- Member, Board of Directors, Philadelphia County Medical Society
- Member, Board of Directors, KePRO, subsidiary of Pennsylvania Medical Society

CHRISTOPHER R.B. MERRITT, M.D.

- Trustee, American Board of Radiology
- Chair, Ultrasound Examination Committee, American Board of Radiology
- Member, Maintenance of Certification Coordinating Committee, American Board of Radiology
- Member, Strategic Planning Committee, College of Physicians
- Member, Curriculum Committee, Society of Radiologists in Ultrasound
- Contributing Editor, *Breast Diseases Quarterly*
- Advisory Editor, *Ultrasound in Medicine and Biology*
- Advisory Editor, *Ultrasound Quarterly*
- Reviewer, *Academic Radiology*
- Reviewer, *American Journal of Roentgenology*
- Reviewer, *Radiology*

DONALD G. MITCHELL, M.D.

- Chair, Gynecology Disease Site Committee, American College of Radiology Imaging Network
- Chair, MRI Committee, RADLEX, Radiological Society of North America
- Member, Gynecologic Cancer Steering Committee, National Cancer Institute
- Member, Committee on Abdominal Imaging, Commission on Body Imaging, American College of Radiology
- Member, Abdominal Committee, RADLEX, Radiological Society of North America
- Managing Editor, Body MRI Teaching File Project, American College of Radiology
- Associate Editor, *Journal of Magnetic Resonance Imaging*
- Member, Editorial Board, *Abdominal Imaging*
- Reviewer, *American Journal of Roentgenology*
- Reviewer, *Radiographics*
- Editor's Recognition Award with Distinction, *Radiology*
- Certificate of Outstanding Leadership, American College of Radiology Imaging Network
- Distinguished Committee Service Award Certificate of Merit, American College of Radiology (completion of service on Neuro Commission on Neuroradiology and Magnetic Resonance, Committee on Research & Technology Assessment)
- Certificate of Merit, Education Exhibit, Radiological Society of North America, (Yoshikawa T, Kawamitsu, Mitchell DG, Ohno Y, et al: Focal liver lesions ADC measurement of abdominal organs and lesions using parallel imaging technique)
- 2006 Outstanding Teacher Award, Outstanding Speaker in the Clinical MRI Course, 14th Annual Meeting of the International Society for Magnetic Resonance in Medicine

WILLIAM B. MORRISON, M.D.

- Member, Expert Panel on Musculoskeletal Radiology, American College of Radiology Appropriateness Criteria, American College of Radiology
- Member, Expert Panel on Musculoskeletal Radiology, Continuous Professional Improvement Series, American College of Radiology
- Member, Program Subcommittee, American Roentgen Ray Society
- Member, Electronic Communications Committee, Society of Skeletal Radiology
- Member, Finance Committee, Society of Skeletal Radiology
- Corporate Liaison, Society of Skeletal Radiology
- Chair, Scientific Poster Committee, Musculoskeletal Section, 92nd Scientific Assembly and Annual Meeting of the Radiological Society of North America

- Associate Editor, Musculoskeletal Section, *Radiology*
- Member, Editorial Board, *Skeletal Radiology*
- Member, Consulting Editorial Board, *Seminars in Musculoskeletal Radiology*
- Reviewer, *American Journal of Roentgenology*
- Reviewer, *Journal of the American Medical Association*
- Reviewer, *Osteoarthritis and Related Research*
- Reviewer, *Radiology*
- Reviewer, *Skeletal Radiology*

LEVON N. NAZARIAN, M.D.

- Chair, Ultrasound Clinical Examination Committee, American Board of Radiology
- Co-Director, Introduction to Research Program, American Roentgen Ray Society
- Member, Board of Governors, American Institute of Ultrasound in Medicine
- Member, Public Information Advisors Network, Radiological Society of North America
- Member, Publication Committee and Editorial Policy Subcommittee, American Roentgen Ray Society
- Member, Annual Convention Committee, American Institute of Ultrasound in Medicine
- Member, Regional Course Committee, American Institute of Ultrasound in Medicine
- Associate Editor, *Journal of Ultrasound in Medicine*
- Associate Editor, *Radiology*
- Assistant Editor, *American Journal of Roentgenology*
- Member, Editorial Board, *Journal of the British Medical Ultrasound Society*
- Reviewer, *Academic Radiology*
- Reviewer, *Archives of Dermatology*
- Reviewer, *Journal of Rheumatology*
- Reviewer, *Radiology Case Reports*
- Reviewer, *Ultrasound in Medicine and Biology*
- Reviewer, *Ultrasound Quarterly*

LAURENCE NEEDLEMAN, M.D.

- Chair, Regional Course Committee, American Institute of Ultrasound in Medicine
- Chair, Program Committee, Society of Radiologists in Ultrasound
- Member, Board of Directors, Pennsylvania Radiological Society
- Secretary, Board of Directors, Intersocietal Commission on Accreditation of Vascular Labs
- Member, Clinical Standards Committee, American Institute of Ultrasound in Medicine
- Member, Ultrasound Guidelines and Standards Committee, American College of Radiology
- Member, Practice Guideline Collaborative Subcommittee for the Performance of an Ultrasound Examination of the Extracranial Cerebrovascular System, American College of Radiology and American Institute of Ultrasound in Medicine
- Member, Practice Guideline Collaborative Subcommittee for the Performance of Physiologic Evaluation of Extremity Arteries, American College of Radiology and American Institute of Ultrasound in Medicine
- Member, Practice Guideline Collaborative Subcommittee for the Performance of Renal Artery Duplex Sonogram, American College of Radiology and American Institute of Ultrasound in Medicine

- Member, Practice Guidelines Comments Reconciliation Committee for the Practical Use of Contrast Media, American College of Radiology
- Member, Public Information Advisors Network, Radiological Society of North America
- Member, Editorial Board, *Journal of Ultrasound in Medicine*
- Reviewer, Ultrasound Accreditation, American College of Radiology
- Reviewer, *Journal of Ultrasound in Medicine*

PATRICK L. O'KANE, M.D.

- Consultant, NIH Trinational Chernobyl Project

VIJAY M. RAO, M.D.

- Chair, Nominating Committee, American Society of Head and Neck Radiology
- Member, Executive Committee, American Society of Head and Neck Radiology
- Member, Committee on Government Issues, Association of Program Directors in Radiology
- Member, Scientific Program Committee, Radiological Society of North America
- Member, Research and Education Evaluation Committee, Radiological Society of North America
- Member, Editorial Board, *Journal of the American College of Radiology*
- Reviewer, Scientific Exhibits, *Radiographics*, Radiological Society of North America
- Reviewer, Scientific Abstracts, 92nd Scientific Assembly and Annual Meeting of the Radiological Society of North America
- Reviewer, Scientific Abstracts, 55th Annual Meeting of the Association of University Radiologists
- Reviewer, Scientific Abstracts, 40th Annual Meeting of the American Society of Head and Neck Radiology
- Reviewer, Scientific Abstracts, 45th Annual Meeting of the American Society of Neuroradiology
- Reviewer, *Academic Radiology*
- Reviewer, *American Journal of Neuroradiology*
- Reviewer, *Radiographics*
- Reviewer, *Radiology*
- Exceptional Reviewer, *Journal of the American College of Radiology*
- Editors Certificate of Recognition, Review of Scientific Exhibits, *Radiographics*
- Editor's Certificate of Recognition, Review of Manuscripts, *Radiographics*
- Named as one of the "Top Doctors in Radiology", *Philadelphia Magazine*
- Named as one of the "Top 10 Radiologists", *Medical Imaging*, 2006
- Named as one of "America's Top Doctors for Cancer", Castle Connolly Medical Ltd.

SHARON R. SEGAL, M.D.

- Member, CME Committee, American Osteopathic College of Radiology

KEVIN L. SULLIVAN, M.D.

- Grant Reviewer, Society of Interventional Radiology Foundation
- Abstract Reviewer, *Radiographics*

LISA M. TARTAGLINO, M.D.

- Proctor, Written Boards, American Board of Radiology, Philadelphia Site
- Reviewer, *Radiology*

MATHEW L. THAKUR, PH.D.

- Delegate-at-Large, Society of Nuclear Medicine
- Member, Board of Governors, Greater New York Chapter of the Society of Nuclear Medicine
- Member, Board of Directors, Society of Nuclear Medicine
- Member, Advisory Committee, US Pharmacopeia
- Member, Advisory Committee, Kuwait Medical Research Council
- Member, Advisory Committee, International Atomic Energy Agency
- Chair, Young Investigators Award Committee, International Society of Radiolabeled Blood Elements
- Chair, Molecular Imaging Task Force, Society of Nuclear Medicine
- Chair, International Task Force, Society of Nuclear Medicine
- Chair, Award Committee, Society of Nuclear Medicine
- Chair, Nomination Committee, Society of Nuclear Medicine
- Chair, Molecular Imaging Center of Excellence Task Force on Awards and Grants, Society of Nuclear Medicine
- Liaison, Radiopharmaceutical Science Council to Society of Nuclear Medicine Board of Directors, Society of Nuclear Medicine
- *Ad hoc* member, Grant Review Service, National Institutes of Health
- Member, Grant Review Service, Foundation for Medical Research, Vienna, Austria
- Member, Education Research Committee, Society of Nuclear Medicine
- Member, Financial Committee, Society of Nuclear Medicine
- Member, International Science Committee, International Society of Radiolabeled Blood Elements
- Member, Public Relations Committee, Society of Nuclear Medicine
- Member, Physicians Self-Referral Task Force, Society of Nuclear Medicine
- Member, Board of Directors, Eagle Alliance
- Member, Industry Summit, Society of Nuclear Medicine
- Organizer, Molecular Imaging Summit, Society of Nuclear Medicine
- Organizer, Molecular Imaging Symposium, 9th Congress of the World Federation of Nuclear Medicine & Biology, Seoul, Korea
- Member, In Vivo Cellular and Molecular Imaging Centers Study Section, National Institutes of Health
- Member, Editorial Board, *European Journal of Nuclear Medicine*
- Member, Editorial Board, *Journal of the Association of Latin American Societies of Nuclear Medicine and Biology*
- Member, Editorial Board, *Journal of the Indian Association of Clinical Medicine*
- Member, Editorial Board, *Journal of Labeled Compounds and Radiopharmaceuticals*
- Member, Editorial Board, *Journal of Nuclear Medicine*
- Member, Editorial Board, *Journal of Nuclear Medicine and Biology*
- Member, Editorial Board, *Nuclear Medicine Communications*
- Reviewer, *Bioorganic and Medicinal Chemistry*
- Reviewer, *Diabetes*
- Reviewer, *European Journal of Nuclear Medicine*
- Reviewer, *Journal of Labeled Compounds and Radiopharmaceuticals*

- Reviewer, *Journal of Nuclear Medicine*
- Reviewer, *Journal of Nuclear Medicine and Biology*
- Reviewer, *Nuclear Medicine Communications*
- Reviewer, *Post Graduate Medical Journal, London, England*
- Reviewer, *Oncology*
- Reviewer, *Veterinary Journal of Pharmaceuticals and Therapy*

TERRI TUCKMAN, M.D.

- Director of Students, Board of Directors of the American Medical Women's Association
- Member, Professional Development Committee, American Medical Women's Association
- Member, Committee on Gender Equity, American Medical Women's Association

ANNINA N. WILKES, M.D.

- Director, American Medical Women's Association
- Member, Women's Health Committee, American Medical Women's Association
- Member, Reach to Recovery Program Committee, American Cancer Society
- Member, Medical Advisory Board, Linda Creed Breast Cancer Foundation
- Member, Medical Advisory Board, Speakers Bureau, Susan Komen Foundation
- International Visiting Professor, Radiologic Society of North America

SHAOXIONG ZHANG, PH.D.

- Member, International Reviewers Panel, *Medical Science Monitor*
- Reviewer, *American Journal of Roentgenology*

ADAM C. ZOGA, M.D.

- Member, Expert Panel, Musculoskeletal Radiology Appropriateness Criteria, American College of Radiology;
- Member, Radiographics Scientific Poster Review Committee, 92nd Annual Meeting of the Radiological Society of North America
- Member, Finance Committee, Society of Skeletal Radiology
- Guest Editor, Hot Topics in Orthopedic Imaging, *Seminars in Musculoskeletal Radiology*
- Reviewer, *American Journal of Roentgenology*
- Reviewer, *Radiology Case Reports*
- 2007 Judith Dubbs Memorial Research Award

APPENDIX

Table 1 ACTIVE GRANTS

Table 2 PENDING GRANTS

Active Grants

07/01/06 - 06/30/07

(Report reflects entire award period and current fiscal year of award)

TABLE 1

NIH/OTHER FEDERAL GRANTS

PRINCIPAL INVESTIGATOR	TITLE OF PROJECT	FUNDING SOURCE	FUNDING DATES	DIRECT COSTS	INDIRECT COSTS	TOTAL COSTS FUNDED
Acton, P. R78801	Imaging Stem Cell Implants in Neurodegenerative Diseases	NIH R01 NS048315	07/01/05 - 03/31/08	\$388,255	\$216,966	\$605,221
Flanders, A. Z40101 (subcontract)	Cross-enterprise Access to Cancer Imaging Data	NIH (NCI) thru Hx Technologies	12/01/05 - 11/30/07	\$35,312	\$19,774	\$55,086
Flanders, A. Z40401	caBIG - In Vivo Imaging Workspace	NIH (NCI) thru Booz Allen Hamilton Inc	10/01/05 - 09/29/07	\$40,000	\$22,400	\$62,400
Forsberg, F. R70101	Contrast-Enhanced US Detection of Angiogenesis	NIH (NCI) R21 CA93907	08/15/03 - 07/31/06 no cost extension	\$250,000	\$142,500	\$392,500
Forsberg, F. R84301	Subharmonic Microbubble Signals for Pressure Estimation	NIH (NHLBI) R21 HL081892	01/15/07 - 12/31/09	\$330,284	\$145,968	\$476,252
Forsberg, F. X08901	Ultrasound Activated Contrast Imaging for Prostate Cancer Detection	U.S. Army Medical Research Acq. DAMD17-03-1-0119	03/01/03 - 03/31/07 no cost extension	\$313,301	\$118,618	\$431,919
Forsberg, F. Z39101 (subcontract)	Sonothrombolysis of Vascular Clots with Targeted Microbubbles	NIH (SBIR) thru ImaRx R44 HL071433	08/30/05 - 06/30/07	\$70,239	\$39,334	\$109,573
				\$110,036 (current fiscal yr)	\$61,620 (current fiscal yr)	\$171,656 (current fiscal yr)
				\$26,634 (current fiscal yr)	\$14,649 (current fiscal yr)	\$41,283 (current fiscal yr)
				\$13,568 (current fiscal yr)	\$7,734 (current fiscal yr)	\$21,302 (current fiscal yr)
				\$18,024 (current fiscal yr)	\$9,913 (current fiscal yr)	\$27,937 (current fiscal yr)
				\$76,255 (current fiscal yr)	\$26,253 (current fiscal yr)	\$102,508 (current fiscal yr)
				\$31,845 (current fiscal yr)	\$17,514 (current fiscal yr)	\$49,359 (current fiscal yr)

Forsberg, F. Z41001 (subcontract)	Broad Band Single Crystal Transducers for Contrast Agent Harmonic Imaging	NIH thru TRS Ceramics, Inc. R44 RR018016	09/25/05 - 08/31/07	\$45,756 --- \$4,071 (current fiscal yr)	\$25,623 --- \$2,239 (current fiscal yr)	\$71,379 --- \$6,310 (current fiscal yr)
Forsberg, F. Z41301 (subcontract)	High Resolution Dematological Scanning Acoustic Microscope	NIH thru J&W Medical R43 ES12362	11/15/05 - 08/31/06	\$33,317 --- \$0 (current fiscal yr)	\$18,658 --- \$0 (current fiscal yr)	\$51,975 --- \$0 (current fiscal yr)
Goldberg, B. R74401	US Detection of Sentinel Lymph Nodes in Melanoma	NIH (NCI) R01 CA100370	08/01/04 - 07/31/08	\$611,254 --- \$176,303 (current fiscal yr)	\$348,415 --- \$71,998 (current fiscal yr)	\$959,669 --- \$248,301 (current fiscal yr)
Goldberg, B. Z16602	American College of Radiology Cooperative Group Mechanism of the ACR Imaging Network	NIH thru ACRIN (cooperative group)	01/01/02 - 12/31/07	\$24,000 --- \$4,703 (current fiscal yr)	\$6,000 --- \$753 (current fiscal yr)	\$30,000 --- \$5,456 (current fiscal yr)
Goldberg, B. Z26902 (subcontract)	Development of a New Class of Ultrasound Contrast Agents	NIH thru Drexel University R01 HL52901	08/01/06 - 06/30/08	\$73,643 --- \$1,429 (current fiscal yr)	\$40,504 --- \$815 (current fiscal yr)	\$114,147 --- \$2,244 (current fiscal yr)
Gonsalves, C. Z38301 (subcontract)	CORAL: Cardiovascular Outcomes in Renal Atherosclerotic Lesions	NIH thru Medical University of Ohio	07/05/05 - 03/31/10	\$52,640 --- \$200 (current fiscal yr)	\$13,160 --- \$50 (current fiscal yr)	\$65,800 --- \$250 (current fiscal yr)
Halpern, E. R83101	US Prostate Cancer Detection with Dutasteride Pretreatment	NIH (NCI) R01 CA118003	07/14/06 - 06/30/09	\$729,338 --- \$133,361 (current fiscal yr)	\$401,136 --- \$72,825 (current fiscal yr)	\$1,130,474 --- \$206,186 (current fiscal yr)
Intenzo, C. Z37201	Positron Emission Tomography Pre- and Post-treatment Assessment for Locally Advanced Non-small Cell Lung Carcinoma	NIH thru ACRIN (cooperative group)	01/01/05 - 12/31/06	\$16,000 --- \$0 (current fiscal yr)	\$4,000 --- \$0 (current fiscal yr)	\$20,000 --- \$0 (current fiscal yr)
Intenzo, C. Z39401	ACRIN 6665: GLEEVEC for Primary and Recurrent Operable Malignant GIST (in collaboration with RTOG-S-0132)	NIH thru ACRIN (cooperative group)	01/01/05 - 12/31/07	\$20,842 --- \$0 (current fiscal yr)	\$5,211 --- \$0 (current fiscal yr)	\$26,053 --- \$0 (current fiscal yr)

Rao, V. M04601	Health Care Facilities and Other Construction	Health Resources and Services Administration C76 HF00170-01	07/01/01 - 05/30/07 no cost extension	\$1,603,311 --- \$1,005,381 (current fiscal yr)	\$0 --- \$0 (current fiscal yr)	\$1,603,311 --- \$1,005,381 (current fiscal yr)
Rao, V. Z24701	ACRIN Core Institute Grant	NIH thru ACRIN (cooperative group)	01/01/02 - 12/31/06	\$52,506 --- \$866 (current fiscal yr)	\$13,126 --- \$216 (current fiscal yr)	\$65,632 --- \$1,082 (current fiscal yr)
Rao, V. Z30201	MRI Evaluation of the Contralateral Breast in Women with a Recent Diagnosis of Breast Cancer	NIH thru ACRIN (cooperative group)	04/01/03 - 03/31/07	\$66,029 --- \$10,324 (current fiscal yr)	\$9,496 --- \$2,581 (current fiscal yr)	\$75,525 --- \$12,905 (current fiscal yr)
Thakur, M. R76901	PET Imaging of Breast Cancer Using Oncogene Expression	NIH (NCI) R01 CA109231	04/01/05 - 03/31/09	\$1,133,619 --- \$267,925 (current fiscal yr)	\$476,118 --- \$147,359 (current fiscal yr)	\$1,609,737 --- \$415,284 (current fiscal yr)
Thakur, M. R78701	Improved Molecular Imaging with SPECT	NIH R01 EB001809	09/10/03 - 07/31/08	\$584,211 --- \$146,253 (current fiscal yr)	\$320,955 --- \$85,637 (current fiscal yr)	\$905,166 --- \$231,890 (current fiscal yr)
Zoga, A. Z24601	A Phase I/II Study of Percutaneous Radiofrequency Ablation of Bone Metastases Using CT Guidance	NIH thru ACRIN (cooperative group) R01 CA109231	11/11/01 - 12/31/06	\$1,810 --- \$112 (current fiscal yr)	\$453 --- \$308 (current fiscal yr)	\$2,263 --- \$1,115 (current fiscal yr)
TOTAL NIH/FEDERAL FUNDING				\$7,475,688	\$2,785,369	\$10,261,057
CURRENT YEAR NIH/ FEDERAL FUNDING				\$2,308,995	\$620,839	\$2,929,834

Active Grants

07/01/06 - 06/30/07

(Report reflects entire award period and current fiscal year of award)

FOUNDATION/NON-PROFIT ORGANIZATION GRANTS

PRINCIPAL INVESTIGATOR	TITLE OF PROJECT	FUNDING SOURCE	FUNDING DATES	DIRECT COSTS	INDIRECT COSTS	TOTAL COSTS FUNDED
Forsberg, F. F75001	Intra-Cardiac Pressure Measurements	American Heart Association	07/01/06 - 06/30/08	\$109,090 -- \$47,008 (current fiscal yr)	\$10,910 -- \$4,701 (current fiscal yr)	\$120,000 -- \$51,709 (current fiscal yr)
Goldberg, B. F65701	Teach the Teachers	Radiologic Society of North America	07/01/04 - 06/30/08	\$300,000 -- \$79,790 (current fiscal yr)	\$0 -- \$0 (current fiscal yr)	\$300,000 -- \$79,790 (current fiscal yr)
Rao, V. F65401	Center for Research on Utilization of Imaging Services	American College of Radiology	01/01/04 - 5/16/08	\$306,840 -- \$55,751 (current fiscal yr)	\$0 -- \$0 (current fiscal yr)	\$306,840 -- \$55,751 (current fiscal yr)
TOTAL NON-PROFIT FUNDING				\$715,930	\$10,910	\$726,840
CURRENT YEAR NON-PROFIT FUNDING				\$182,549	\$4,701	\$187,250

Active Grants

07/01/06 - 06/30/07

(Report reflects entire award period and current fiscal year of award)

INDUSTRIAL GRANTS

PRINCIPAL INVESTIGATOR	TITLE OF PROJECT	FUNDING SOURCE	FUNDING DATES	DIRECT COSTS	INDIRECT COSTS	TOTAL COSTS FUNDED
Feld, R. A86201	Real-time Elastography for the Evaluation of Thyroid Nodules	Hitachi Medical Corporation	09/29/05 - 09/28/06	\$37,875 -- \$12,893 (current fiscal yr)	\$9,469 -- \$0 (current fiscal yr)	\$47,344 -- \$12,893 (current fiscal yr)
Flanders, A. A53601	ADCON-L MRI Research Project	GliaTech	09/01/01 - 12/31/50	\$25,000 -- \$0 (current fiscal yr)	\$6,250 -- \$0 (current fiscal yr)	\$31,250 -- \$0 (current fiscal yr)
Forsberg, F. A94201	Assessment of B&K Scanner for Liver and Prostate Evaluations	B&K Medical	10/01/06 - 10/31/06	\$6,692 -- \$4,176 (current fiscal yr)	\$0 -- \$0 (current fiscal yr)	\$6,692 -- \$4,176 (current fiscal yr)
Forsberg, F. J19501	Assessment of CAD System for Breast Cancer Diagnosis	Almen Laboratories	09/05/06 - 11/19/06	\$7,664 -- \$6,691 (current fiscal yr)	\$1,916 -- \$1,916 (current fiscal yr)	\$9,580 -- \$8,607 (current fiscal yr)
Halpern, E. A94101	Pilot Study of Microflow Imaging Technology	Bristol-Myers Squibb	06/26/06 - 12/31/50	\$5,500 -- \$1,173 (current fiscal yr)	\$0 -- \$0 (current fiscal yr)	\$5,500 -- \$1,173 (current fiscal yr)
Halpern, E. J13801	Correlation of Contrast-Enhanced Sonography to ProstaScint Scan Imaging of the Prostate	Cytogen Corporation	02/22/06 - 12/31/50	\$84,402 -- \$18,750 (current fiscal yr)	\$20,476 -- \$13,500 (current fiscal yr)	\$104,878 -- \$32,250 (current fiscal yr)

O'Kane, P. A66301	Accuracy of Contrast-Enhanced Sonography for Detection of Traumatic Injuries to Solid Abdominal Organs Compared with Conventional (Non-Contrast) Sonography and Computed Tomography	Bristol-Myers Squibb	03/18/03 - 12/31/50	\$10,000 --- \$0 (current fiscal yr)	\$2,000 --- \$0 (current fiscal yr)	\$12,000 --- \$0 (current fiscal yr)
Rao, V. A81401	Cardiac CTA vs Invasive Coronary Angiography	Philips Medical Systems	08/23/04 - 06/30/07	\$160,000 --- \$14,419 (current fiscal yr)	\$40,000 --- \$39,000 (current fiscal yr)	\$200,000 --- \$53,419 (current fiscal yr)
Sharma, D. A81301	Digital Imaging Research	AGFA Corporation	11/15/04 - 11/30/07	\$21,633 --- \$2,945 (current fiscal yr)	\$4,783 --- \$0 (current fiscal yr)	\$26,416 --- \$2,945 (current fiscal yr)
Sullivan, K. J15101	STRIDE 1: Does Early Safe Thrombus Removal in DVT have an Effect on Patient Outcomes?	Bacchus Vascular, Inc.	03/08/06 - 03/07/07	\$13,710 --- \$2,500 (current fiscal yr)	\$2,803 --- \$0 (current fiscal yr)	\$16,513 --- \$2,500 (current fiscal yr)
Wilkes, A. A82601	A Multicenter, Prospective, Blinded Reader Study to Determine the Sensitivity and Specificity of the ComfotScan System to Detect Malignancy as an Adjunct to Mammography in Patients <= 50 Years of Age (DOBI-1009)	DOBI Medical International	02/15/05 - 12/31/50	\$10,000 --- \$0 (current fiscal yr)	\$2,500 --- \$0 (current fiscal yr)	\$12,500 --- \$0 (current fiscal yr)
TOTAL INDUSTRIAL FUNDING				\$382,476	\$90,197	\$472,673
CURRENT YEAR INDUSTRIAL FUNDING				\$63,547	\$54,416	\$117,963
TOTAL FUNDING				\$8,574,094	\$2,886,476	\$11,460,570
TOTAL CURRENT YEAR FUNDING				\$2,555,091	\$679,956	\$3,235,047

Pending Grants
07/01/06 - 06/30/07

(Report reflects entire award period and first year of award)

TABLE 2

NIH/OTHER FEDERAL GRANTS

PRINCIPAL INVESTIGATOR	TITLE OF PROJECT	FUNDING SOURCE	FUNDING DATES	DIRECT COSTS	INDIRECT COSTS	TOTAL COSTS FUNDED
Forsberg, F.	Contrast-Enhanced 3D Subharmonic Breast Imaging	NIH	12/01/07 - 11/30/11	\$1,917,207	\$493,414	\$2,410,621
Forsberg, F.	Noninvasive Subharmonic Pressure Estimation for Monitoring Breast Cancer Response to Neoadjuvant Therapy	U.S. Army Medical Research Acq.	04/01/08 - 03/31/11	\$299,966	\$164,981	\$464,947
Forsberg, F. (subcontract)	Use of Tactile Breast Imager for Mass Pre-Screening	NIH thru Artann Laboratories	01/01/08 - 12/31/09	\$96,724	\$53,198	\$149,922
Lai, S.	MRI Assessment of Axonal Damage and Monitoring Treatment in Multiple Sclerosis	NIH	07/01/07 - 06/30/19	\$275,000	\$151,250	\$426,250
Mitchell, D.	ACRIN PA 4002: Angle Interleaved Projection Reconstruction with K-Space Weighted Image Reconstruction for Dynamic Contrast MRI of Cancer Therapy Response	PA Department of Health thru ACRIN (cooperative group)	07/01/06 - 06/30/09	\$66,717	\$10,728	\$77,445
Morrison, W. (subcontract)	Bone Micro-Architecture and Micro-Vasculature in Type 2 Diabetes	NIH thru Micro MRI	10/01/08 - 11/30/09	\$194,585	\$53,425	\$248,010
Nazarian, L. (subcontract)	High Intensity Focused Ultrasound Therapy for Chronic Tendons	NIH thru Riverside Research Institute	04/01/08 - 03/31/10	\$13,628	\$4,426	\$18,054
				\$120,628	\$66,345	\$186,973
				\$40,200	\$22,110	\$62,310
				(-01 year)	(-01 year)	(-01 year)

Thakur, M.	Oncogenic Approaches to PET Imaging of Prostate Cancer	NIH	12/01/07 - 11/30/10	\$1,141,175 \$382,474 (-01 year)	\$627,648 \$210,361 (-01 year)	\$1,768,823 \$592,835 (-01 year)
Wolf, M.	ACRIN 6677: A Randomized Phase II Trial of Bevacizumab with Irinotecan or with Temozolomide in Recurrent Glioblastoma	NIH thru ACRIN (cooperative group)		\$8,000 \$8,000 (-01 year)	\$2,000 \$2,000 (-01 year)	\$10,000 \$10,000 (-01 year)
			TOTAL NIH GRANT FUNDING	\$4,120,002	\$1,622,989	\$5,742,991
			TOTAL FIRST YEAR NIH FUNDING	\$1,058,084 (-01 year)	\$482,251 (-01 year)	\$1,540,335 (-01 year)

Pending Grants

07/01/06 - 06/30/07

(Report reflects entire award period and first year of award)

FOUNDATION/NON-PROFIT ORGANIZATION GRANTS

PRINCIPAL INVESTIGATOR	TITLE OF PROJECT	FUNDING SOURCE	FUNDING DATES	DIRECT COSTS	INDIRECT COSTS	TOTAL COSTS FUNDED
Thakur, M.	PET Imaging of Cancer Gene Expression in Prostate Cancer	Prostate Cancer Foundation	02/01/07 - 01/31/08	\$100,000	\$0	\$100,000
Zhang K. post-doctoral fellow	PET Molecular Imaging of Prostate Cancer by Targeting VP AC1 Receptors	Society of Nuclear Medicine	07/01/07 - 06/30/08	\$8,000	\$0	\$8,000
TOTAL NIH GRANT FUNDING				\$108,000	\$0	\$108,000
TOTAL FIRST YEAR NIH FUNDING				\$108,000	\$0	\$108,000

Pending Grants
07/01/06 - 06/30/07

(Report reflects entire award period and first year of award)

INDUSTRIAL GRANTS

PRINCIPAL INVESTIGATOR	TITLE OF PROJECT	FUNDING SOURCE	FUNDING DATES	DIRECT COSTS	INDIRECT COSTS	TOTAL COSTS FUNDED
Forsberg, F.	Clinical Evaluation: Philips Pathfinder Ultrasound System	Philips Medical Systems	09/01/07 - 08/31/08	\$5,440	\$1,360	\$6,800
Intenzo, C.	A Phase I Open Label Single Center Safety Study of [F-18]FLT	Siemens Molecular Imaging	10/01/07 - 12/31/07	\$40,000	\$10,000	\$50,000
TOTAL INDUSTRIAL FUNDING				\$45,440	\$11,360	\$56,800
TOTAL FIRST YEAR INDUSTRIAL FUNDING				\$45,440	\$11,360	\$56,800
TOTAL PENDING FUNDING				\$4,273,442	\$1,634,349	\$5,907,791
TOTAL FIRST YEAR PENDING FUNDING				\$1,211,524	\$493,611	\$1,705,135