


5-1949

# Jefferson Medical College Alumni Bulletin–Vol. 4 No. 3, May 1949

## Let us know how access to this document benefits you

Follow this and additional works at: [http://jdc.jefferson.edu/alumni\\_bulletin](http://jdc.jefferson.edu/alumni_bulletin)

 Part of the [History of Science, Technology, and Medicine Commons](#), and the [Medicine and Health Sciences Commons](#)

### Recommended Citation

"Jefferson Medical College Alumni Bulletin–Vol. 4 No. 3, May 1949" (1949). *Jefferson Medical College Alumni Bulletin*. Paper 41.

[http://jdc.jefferson.edu/alumni\\_bulletin/41](http://jdc.jefferson.edu/alumni_bulletin/41)

This Article is brought to you for free and open access by the Jefferson Digital Commons. The Jefferson Digital Commons is a service of Thomas Jefferson University's [Center for Teaching and Learning \(CTL\)](#). The Commons is a showcase for Jefferson books and journals, peer-reviewed scholarly publications, unique historical collections from the University archives, and teaching tools. The Jefferson Digital Commons allows researchers and interested readers anywhere in the world to learn about and keep up to date with Jefferson scholarship. This article has been accepted for inclusion in *Jefferson Medical College Alumni Bulletin* by an authorized administrator of the Jefferson Digital Commons. For more information, please contact: [JeffersonDigitalCommons@jefferson.edu](mailto:JeffersonDigitalCommons@jefferson.edu).

*The*  
JEFFERSON MEDICAL  
COLLEGE ALUMNI  
BULLETIN

VOL. IV

MAY, 1949

No. 3

## EDITORIAL NOTES

The picture on the opposite page will recall many memories to our alumni who graduated previous to 1930. It is one of the collection of photographs of the old college building at Tenth and Walnut Streets that are on file in the College. Other pictures from this collection will be reproduced from time to time.

\* \* \*

This issue of the ALUMNI BULLETIN brings to you pertinent details pertaining to the individuals involved in the recent reorganization of the executive management of our institution. To Mr. Robert P. Hooper the BULLETIN wishes to express the everlasting gratitude of all Jefferson Alumni for his great service to them and to Jefferson. It is our hope that as Chairman of The Board of Trustees his interest and his efforts in behalf of our Alma Mater will continue unabated. To Admiral Kauffman we extend a hearty welcome and pledge to him our wholehearted support and cooperation.

\* \* \*

The retirement of Mr. J. J. Wilson after thirty-two years' service as librarian to The Jefferson Medical College is announced in this issue of THE BULLETIN.

Mr. Wilson has been a staunch friend of generations of Jefferson students and alumni. His friendly greeting and smile of recognition has made many a returning alumnus feel "at home" in the old College. THE BULLETIN wishes to express to Mr. Wilson our sincere appreciation for his long years of friendly service to Jefferson. We wish him good health and Godspeed and assure him that he will always have a warm place in the hearts of Jefferson Alumni.

\* \* \*

Your publication committee wishes THE BULLETIN to be of real interest and value to every Jefferson Alumnus. To this end we solicit your suggestions and your criticisms. The policy of publishing supplemental issues will be continued in October, January and March. This will enable us to bring to you an increasing amount of detailed information about Jefferson and will provide ample space for items of personal interest and for more detailed news concerning branch chapters and Jefferson meetings throughout the country. We will appreciate your cooperation in sending us items of interest.

---

### PUBLICATION COMMITTEE

John B. Montgomery, *Chairman and Editor*

Anthony De Palma, *Assistant Editor*

Leandro M. Tocantins

Wm. Harvey Perkins

Alison H. Price

Adolph A. Walking

John F. Wilson

James M. Surver





ROBERT P. HOOPER, Chairman  
BOARD OF TRUSTEES  
THE JEFFERSON MEDICAL COLLEGE OF PHILADELPHIA

## BOARD OF TRUSTEES ANNOUNCES CHANGES IN ORGANIZATION

On April 7th, at a press conference the President of the Board of Trustees, Mr. Robert P. Hooper, made an important announcement. For the first time in Jefferson's long history the institution will have both a President and a Chairman of the Board of Trustees.

All alumni were mailed a copy of the release made to the newspapers, announcing the election of Vice Admiral James L. Kauffman as President and the elevation of Mr. Hooper to the newly created position as Chairman of the Board.

At a special meeting of the trustees Mr. Hooper, in asking to be relieved as President, stated that the business and affairs of Jefferson had become so extensive that full time duties would be required of its executive president. The trustees expressed their deep regret that Mr. Hooper deemed it advisable to relinquish his duties as President, pointing out that during the many years Mr. Hooper had served Jefferson he had made an invaluable contribution to its advancement. However, the trustees concurred with Mr. Hooper's opinion that the President of Jefferson should be an operating executive on a full time basis and approved the recommendation as a further contribution by Mr. Hooper. Establishing the position of Chairman of the Board will secure to Jefferson Mr. Hooper's continued interest and assistance in its affairs.

It was also announced that, in a further reorganization of officerships, Dr. Hayward R. Hamrick, Secretary of the Board and Medical Director of Jefferson Hospital, while continuing in those posts will serve in a newly established position as Vice-President of the corporation.

Admiral Kauffman assumed his new duties on May 1st.

---

TO THE MEMBERS OF THE ALUMNI ASSOCIATION, JEFFERSON MEDICAL COLLEGE:


*We have come to the end of another year of significant progress for Jefferson. The Board of Trustees is especially proud and appreciative of the fine spirit of Alumni loyalty which has been expressed by graduates in the Alumni Annual Fund. Every commendation is due to the great number of Alumni who by giving have expressed their confidence in what Jefferson stands for, and to the energetic leaders in the Alumni organization.*

*It is with great reluctance that I relinquish my duties as President of the Board of Trustees, but the accelerated growth of Jefferson in these recent years makes it necessary to have an executive at its helm who can give constant attention to its every need.*

*I feel I can no longer give the time which that responsibility requires, but am happy, as Chairman of the Board, to continue to give my unfailing interest and support. For our new President, Admiral Kauffman, I bespeak your continued loyalty and support.*

*My best wishes to every one of you for your individual success and happiness.*

Very truly yours,



ROBERT P. HOOPER.

## MR. ROBERT P. HOOPER, Chairman

## THE BOARD OF TRUSTEES

For the past twenty-nine years Mr. Hooper has been a member of the Board of Trustees, serving for the past thirteen years as Jefferson's President. He will continue to serve as a member of the Board and as its Chairman.

This span of years, representing the more recent one-fourth of Jefferson's long history, covers so many significant advances and such general progress with which alumni are familiar that a recitation of Mr. Hooper's activities at Jefferson would itself make a book.

As President, he has devoted more of his time and interest to Jefferson than to his business or any other activities. His leadership has had a profound influence on Jefferson's physical development and growth during a difficult period. His businesslike administration has enabled Jefferson to maintain its position in this postwar adjustment period.

As a man of remarkable energy and many interests his long career to date in other fields briefly set forth here, will be of interest to alumni.

Robert P. Hooper was born in Baltimore, Md., on July 15, 1872, the son of James E. and Sarah Poole Hooper. His father, grandfather, and great-grandfather were all civic leaders and men of means in Baltimore in their day. He was educated privately and at The Hill School. On October 21, 1896, he married Marion G. Baylies and has two children, James E., Vice-President of Wm. E. Hooper & Sons Co., and Josephine Hooper Service.

His business career began after a long apprenticeship with the Poole and Hunt Engineering Co. in Baltimore, as draftsman in the Engineering Department. During a part of this period he taught night school at the Maryland Polytechnic Institute.

After acting as selling agent in New York for various Southern manufacturers of cotton products, in 1896 Mr. Hooper came to Philadelphia and formed the partnership of Hooper-Seving and Company, a commission house to handle the output of Southern manufacturers.

Mr. Seving retired in 1902 and because of the tremendous increase in the volume of business, the corporation of Hooper Sons' Manufacturing Co. was organized, with Mr. Robert P. Hooper as President and Treasurer.

In 1914, following the death of Mr. Hooper's father, the Hooper Sons' Manufacturing Co. merged with Wm. E. Hooper & Sons Co. Mr. Robert P. Hooper became President and Treasurer, which offices he still holds.

Established in 1800, Wm. E. Hooper & Sons Co. has the distinction of being one of the very few firms in the United States under the control of the same family for 149 years.

Founded by William Hooper, great-grandfather of Mr. Robert Hooper, to make sails for the Clipper Ships of the day, later one of the largest manufacturers of cotton duck in the United States, the company has kept abreast with the changing times, developing new products as required by the ever-expanding industries of the country. While still one of the leading manufacturers of cotton duck, canvas is now but a part of the enormous output of the Hooperwood Mills.

Under Mr. Hooper's leadership, the Research Laboratory turned its attention to experimenting on a long-felt need in the industry—a fire-resistant finish for textiles.

The result was Fire Chief Finish, used in almost unbelievable quantities during the war. In fact, every yard of canvas used by the Armed Forces was resistant to fire, water and mildew, finished under patents owned and controlled by Wm. E. Hooper & Sons Co.

Owning one of the first half dozen automobiles in Philadelphia, Mr. Hooper soon realized that the interest of the motorist was best served by organized groups and was one of the original organizers of the American Automobile Association, becoming its President in 1910. He had helped organize the Automobile Club of Germantown in 1904.

He helped organize the Pennsylvania Motor Federation, serving as its President from 1908 until 1926. Under his guidance great strides were made toward improving motoring conditions in Pennsylvania, including passage of safety laws.

For over forty years he has been a member of the Automobile Club of Philadelphia and was its President from 1931 until 1947. Upon his resignation as President, he was unanimously elected Honorary Chairman of the Board.

When the State of Pennsylvania, in the early days of motoring, decided to draft an improved highway system, Mr. Hooper was consulted and threw himself wholeheartedly into the work. He was brought into close personal contact with public spirited leaders in every county of the State. His enthusiasm and good salesmanship gained cooperation on every side and Pennsylvania's highways quickly began to show improvement.

He was one of the original "good roads" men of the entire United States. As President of the American Automobile Association, he carried on the work in an effort to get good roads for the entire Nation. He helped lay out highways and route designations for the entire eastern seaboard and systems to the mid-West. To him goes a great deal of the credit for getting the American motorist "out of the mud."

Mr. Hooper has been interested in boats since as a boy he spent his summers on the Chesapeake Bay.

For many years he has been an enthusiastic yachtsman. His most recent yacht, "The Marion," was well known on the Chesapeake, where he and his family spent week-ends as long as the weather permitted. In the winter they cruised down the Inland Waterway to Florida. Cruises on "The Marion" are long remembered by his many friends.

At the outbreak of the war, "The Marion" was turned over to the Coast Guard, where she served a useful purpose.

Mr. Hooper is a member of the Board of Directors of The Lumbermens Mutual Casualty Company and the National Retailers Mutual Insurance Company of Chicago; The Excess Insurance Company of America, New York City; and the Philadelphia Automobile Club Insurors.

He is a member of long standing of many prominent Clubs. He has belonged to the Merchants Club in New York City since 1907. He is a member of the New York Yacht Club. In Philadelphia, The Racquet, Midday, Union League and the Corinthian Yacht Club; and is a member of the Maryland Club in Baltimore, Md.





JAMES LAURENCE KAUFFMAN, VICE-ADMIRAL, U.S.N. (RET.)  
PRESIDENT OF  
THE JEFFERSON MEDICAL COLLEGE OF PHILADELPHIA

JAMES LAURENCE KAUFFMAN, VICE-ADMIRAL U.S.N. (RET.)  
PRESIDENT OF THE JEFFERSON MEDICAL COLLEGE

The information sent earlier to all alumni concerning the election of Admiral Kauffman was essentially a chronological resume of his naval career. To give a somewhat more complete picture of the new leader of Jefferson, there follow here some additional biographical notes.

James Laurence Kauffman, President of Jefferson Medical College since May 1, retired on that date with the rank of Vice-Admiral, U.S.N., from active duty in the Navy as Commandant of the Fourth Naval District at the Philadelphia Naval Base.

During the period of the past three years, while Admiral Kauffman has been located in Philadelphia, he has been active in Philadelphia civic affairs and in affairs throughout the area of the state and the Fourth Naval District. He is widely known among Philadelphia civic and business leaders.

Admiral Kauffman was born in Miamisburg, Ohio (near Dayton) on April 18, 1887, the son of James A. and Mary Laura Hunt Kauffman. His paternal forebearer, Frederick Kauffman, arrived in the United States from Switzerland in 1734 and settled on "Kauffman Farm," two and one-half miles from Anneville, Pa. (near present "Kauffman Church and Cemetery"). Admiral Kauffman's grandfather went west and settled in Miamisburg, Ohio.

The future Admiral had his early education in the public schools of Miamisburg and High School in Dayton, attending the Pennsylvania Military College in Chester, Pa., in 1901-02. He was appointed to the U. S. Naval Academy at Annapolis in 1904, graduating there "with credit" in 1908 and receiving the B.S. degree. Later in his naval career he attended the U. S. Naval War College, Newport, R. I., in 1933-1934. In 1947 he had conferred on him the honorary degree, Doctor of Naval Science, by the Pennsylvania Military College.

During 45 years of naval service, briefly reported in the earlier alumni message, Admiral Kauffman traveled extensively in all parts of the world. He received the following awards: Navy Cross; Distinguished Service Medal; three Legion of Merit (2 Navy, 1 Army); Special Commendation by the Secretary of the Navy; Distinguished Service Star; Philippine Government; 8 Campaign Medals; 4 Decorations by Foreign Governments.

The new President of Jefferson and his wife, Elizabeth Draper Kauffman, have two children—Commander Draper L. Kauffman, whose wife is Margaret Tuckerman Kauffman and who has three children, and Elizabeth Louise Hunt Kauffman Bush, who is married to Prescott S. Bush, Jr., of Greenwich, Conn., and who has two children. Admiral and Mrs. Kauffman will live in Merion, Pa.

Some of Admiral Kauffman's leadership characteristics and his executive and administrative experience are underscored in commendations by the nation's military heads.

Remarks by the Secretary of the Navy, James Forrestal: "Vice-Admiral Kauffman . . . A brilliant and inspiring leader, he consistently maintained his command at the peak of efficiency . . . by his keen foresight, outstanding administrative ability and conscientious devotion to the varied and complex duties of his assignment, Vice-Admiral Kauffman contributed materially to the success of our forces . . ."

Remarks by General of the Army, Douglas MacArthur: ". . . his brilliant logistical knowledge and decisive leadership were vital factors in many complex operations in which he successfully coordinated functions of his organization with those of major military commands . . ."

In commendation from Admiral Chester W. Nimitz, Commander-in-Chief, Pacific Fleet: "Admiral Kauffman is an officer of outstanding personal and military character who has performed his duties . . . in an outstanding manner. He gets along well with seniors, juniors, contemporaries and civilians. His capabilities and energies have contributed in a very great degree to high morale in the personnel of the types under his command. Under very great difficulties he has provided for maximum use of time and facilities for the upkeep of material and employment of training facilities.", and in another commendation by Admiral Nimitz:

"Vice-Admiral Kauffman has performed his duties as Commander, Philippine Sea Frontier in an outstanding manner. He is an officer of outstanding personal and military character who is cheerful, and who inspires the confidence and enthusiasm of his subordinates."

Admiral T. C. Kinkaid, while Commanding the Seventh Fleet, wrote: "Vice-Admiral Kauffman has boundless enthusiasm and energy and marked ability to get things done despite obstacles. During the difficult weeks following the landing at Leyte, while combat operations were in progress and the area was still under heavy enemy air attack, by his zeal and ingenuity he accomplished excellent and valuable results in the performance of functions for which no facilities or organization were as yet available . . ."

In written commendation of Admiral Kauffman's performance of duties as Commander of the Naval Operating Base in Iceland in 1942, Admiral Ingersoll, Commander-in-Chief, Atlantic Fleet, said: "Rear Admiral Kauffman has performed his duties with zeal and effectiveness. He has done very good work in a billet which has required special effort to work in harmony with our own and other authorities—naval, military and civil . . ."

Recently, on April 5th, the historic Poor Richard Club of Philadelphia presented that organization's citation to Admiral Kauffman. The Award (made each year to an outstanding Philadelphian) said in part:

"In awarding this citation of merit we also take cognizance of Admiral Kauffman's distinguished service to the great city of Philadelphia while serving as Commandant of the Fourth Naval District and Commander of Naval Base, Philadelphia, during which period he devoted his tireless energies toward furthering the best interests, in all its complex activities, of this great Philadelphia Community."

---

TO THE MEMBERS OF THE JEFFERSON MEDICAL COLLEGE ALUMNI ASSOCIATION:

Gentlemen:

*It is with great pleasure that I enter upon my duties as President of The Jefferson Medical College and its Hospital. I hope I will warrant your confidence and have the interest and loyal support of Jefferson's fine alumni.*

*I shall give myself wholeheartedly to furthering Jefferson's continued success and growth.*

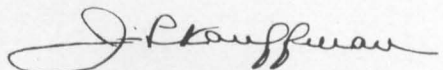
*It is both a privilege and a challenge to have the opportunity of working in this historical institution with her fine traditions.*

*I want you to know that I shall always be glad to hear of problems which you feel may confront Jefferson, or any constructive suggestions you may wish to offer. I hope that every alumnus, no matter where he is located, will feel a very personal responsibility for the furtherance of the welfare of his alma mater.*

*Thus working together, we may be assured that the traditions of Jefferson and her preeminence in the medical world will be maintained.*

*Trusting that I may have the pleasure of meeting all of you, and with very warm good wishes, I am*

Sincerely yours,



President.



HAYWARD R. HAMRICK, M.D., VICE-PRESIDENT

In 1937 Dr. Hamrick undertook his first administrative responsibilities at Jefferson as Chief Resident Physician in the Jefferson Hospital. Subsequently in 1938 he was made Director of the Curtis Clinic and in 1942 became Medical Director of the hospital. While serving in this latter capacity he was given the duties of Acting Secretary of the Board of Trustees in the same year, and Secretary of the Board.

The Board of Trustees has now appointed Dr. Hamrick to the newly created position of Vice-President of the corporation.

This long term of active participation in the management of the professional and business affairs of the institution has been rewarded by his elevation to this new position. He will continue to administer the hospital as previously and to forward the interests of Jefferson and the community in his various connections with other hospital administrators and civic agencies.

Dr. Hamrick received his academic education at West Virginia Wesleyan and attended for two years the Law School at the University of Kentucky.

Dr. Hamrick is consultant in internal medicine in the Jefferson Hospital and is Instructor on the faculty of the Medical School.

He is a member of the American College of Hospital Administrators, Racquet Club, and Philadelphia Country Club.

## JEFFERSON ENDOWMENTS

It is felt that the Alumni would be interested in some general figures as to the endowments of the institution. These have grown from a little over \$2,000,000 on December 31, 1938 to over \$6,000,000 at the present time. Most of this increase has come through legacies but in part it has been due to a 33% appreciation from original values.

\$6,000,000 is, of course, a substantial figure and the question naturally arises why a large income is not available for college purposes. However, over half of the total has been specifically left for Hospital purposes and is not available to the College. Furthermore, nearly all of the remainder has been left for specific purposes. For example, nearly \$500,000 is represented by the Ross V. Patterson Fellowship Fund, the income of which is being used for the Patterson Fellows.

All funds which are not restricted as to income have been lumped into the College Endowment Fund, which has a value of only \$300,000. Against this must be considered the \$1,000,000 College share of the \$1,500,000 mortgage on the College and Hospital.

Jefferson, in relation to its size and standing and in comparison with other colleges and professional schools, is definitely short in endowment, and particularly in unrestricted endowment. The gratifying growth in the endowed funds, over the past ten years, must be continued in the early future, if the institution is to meet its responsibilities and fulfill its role.

The investment results have been very satisfactory. By December 31, 1938 virtually all the depreciation which took place during the depression had been made up. During the subsequent ten years there has been an appreciation, as noted above, of a third.

In 1939 there was formed the Jefferson Medical Fund in which, for investment purposes, practically all the investments of the various funds were pooled. Distributions on shares of this fund amounted to  $6\frac{3}{4}\%$  of their original value in 1948. The latter figure is 4.7% of the present value of the securities. This is made possible by the fact that 44% of the present investments are in common stocks.

In other words, a \$50,000 legacy left us in 1939 is today worth \$66,000 and funds left us in 1929 and prior thereto show similar appreciation. The income on such a legacy was \$3,125 last year.

We do not know of any other institution which has such a record of principal appreciation since 1929 and which is receiving such a high rate of income on 1929 values.

The Finance Committee of the Board of Trustees, and the entire Board, are due great appreciation for the excellent stewardship of Jefferson funds committed to their trust.

## CONTRIBUTIONS TO THE COLLEGE

June 1, 1948, to Present

Check for \$500.00 representing the initial payment of the commitment of \$1,000.00 of Mrs. Stuart Lodge Bullivant for the purpose of creating a memorial prize in honor of her father, Dr. S. MacCuen Smith.

\* \* \*

Prize of \$50.00 to be awarded annually by Dr. Augustus A. Eshner to that member of the Junior Staff (below the rank of Professor, Clinical Professor, Associate Professor, Assistant Professor) selected for having made the most deserving contribution to the science or the art of medicine, entered anonymously, in competition.

\* \* \*

Estate of A. Atwater Kent—\$250,000.00 to be used by the College for Cancer Research or in such other fields of medical research as the College may deem advisable.

\* \* \*

From the Estate of George M. Speck, M.D., \$48,806.62 for the George M. Speck Fellowship Fund for scholarship aid. Dr. Speck graduated from Jefferson in 1888. He practiced medicine in Pittsburgh until 16 years ago, when he retired and returned to Huntingdon, Pa., purchasing the family homestead where he lived until his death.

Governor of the Commonwealth of Pennsylvania,  
the Honorable James H. Duff, will be guest speaker at this  
year's Commencement, June 3, 12 o'clock noon at the  
Academy of Music, Broad and Locust Streets.



N. A. MICHELS, A.B., M.A., Sc.D.  
Professor of Anatomy



JOSEPH O. CRIDER, M.D.  
Professor of Physiology



ANDREW J. RAMSAY, A.B., Ph.D.  
Professor of Histology and Embryology

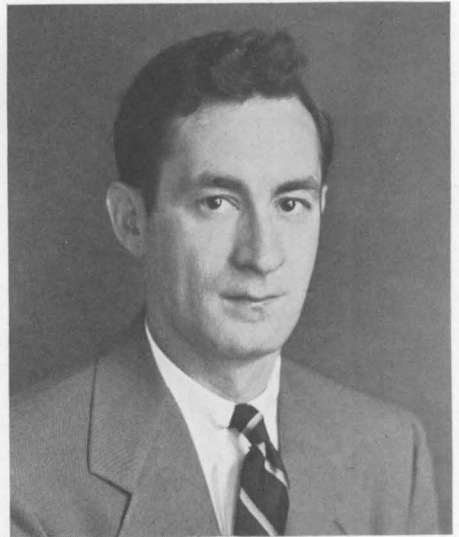




PETER A. HERBUT, M.D.  
Professor of Pathology



ARNO E. TOWN, B.S., M.D., M.Ms.  
Professor of Ophthalmology



CLARENCE S. LIVINGOOD, M.D.  
Professor of Dermatology and Syphilology



JOSEPH J. WILSON

Students' Friend - - Physicians' Adviser

Librarian

Jefferson Medical College

Appointed September 10, 1917 — Retired July 1, 1949

## MR. JOSEPH J. WILSON, LIBRARIAN.

*The Board of Trustees announces with regret its acceptance of the resignation of Joseph J. Wilson from the position of Librarian, to become effective at the end of the current school term.*

*Mr. Wilson received his appointment to the position of Librarian in 1917. He entered his duties with zeal and enthusiasm and began immediately to be interested in the welfare of the students. Through his entire career he has fostered their interests and earned their undying friendship.*

*The story of Mr. Wilson through two World Wars and to date has been the story of Jefferson of these times.*

*He has known and seen the passing of many of the great men of Jefferson and watched our present faculty take their eminent places.*

*Mr. Wilson leaves us after thirty-two years of uninterrupted and loyal performance of his responsibilities. He has the best wishes and thanks of many hundreds of alumni and of the Administration, as much for his not-in-line-of-duty activities as for his official services.*

*The Board of Trustees and the Dean can express but a small part of the gratitude and thanks due him, which will be given fully and freely by all those who have been privileged to know him.*

WM. HARVEY PERKINS, M.D.,  
Dean.

## DOCTOR JOSEPH O. CRIDER.

*On June first Doctor J. O. Crider will relinquish his duties as Assistant Dean, to devote his full time to teaching and research in the Department of Physiology.*

*Doctor Crider holds the title of Professor in that department and will continue to carry on his work there as he has done for the past nineteen years since he came to Jefferson in the dual capacity of teacher and Assistant Dean.*

*Doctor Crider has a long experience in the field of medical education. At the University of Mississippi, he rose through the teaching grades to become Professor of Physiology in 1916. He was appointed as Assistant Dean the same year, and became Dean of that School of Basic Medical Sciences in 1924.*

*Many of his pupils and others after him have transferred from the University of Mississippi to be admitted to advanced standing in the Junior Year at Jefferson.*

*He possesses a profound knowledge of the academic requirements for admission to medical school. This has been invaluable to us in the selection of qualified applicants for admission.*

*Doctor Crider will be missed by his many friends in the Academic Colleges and Universities who have visited and consulted with him over many years on the merits of prospective students and problems of mutual interest to their schools and ours.*

*The Administration wishes to express its deep appreciation of the long and expert service Doctor Crider has given to Jefferson as Assistant Dean, and to wish him happiness and satisfaction in the continued performance of his academic duties.*

WM. HARVEY PERKINS, M.D.,  
Dean.



**W. PAUL HAVENS, JR., M.D.**  
**Assistant to the Dean**

WALTER PAUL HAVENS, M.D.

*The Board of Trustees takes pleasure in announcing the appointment of Walter Paul Havens, M.D., to the position of Assistant to the Dean.*

*Doctor Havens needs no introduction to the Faculty at Jefferson. He came to us first as a Resident in the Department of Medicine in 1938. He had graduated from the School of Medicine of Harvard University in 1936 and thereafter completed a two-year internship at the Lankenau Hospital in Philadelphia.*

*In 1941 Doctor Havens received a Fellowship under the National Research Council at the Hospital of the Rockefeller Institute for Medical Research in New York, where he remained through 1942 until he joined the 38th General Hospital as Chief of the Section of General Medicine.*

*After release from military service he became Attending Physician to the New Haven Hospital, and in 1945 was appointed Research Associate in Preventive Medicine with the rank of Assistant Professor in the Yale University Medical School.*

*Doctor Havens returned to Jefferson in the term of 1946 with an appointment as Associate Professor of Preventive Medicine. He is an Associate Physician at the Pennsylvania Hospital where, in conjunction with the teaching of our Department of Medicine, he forwards the interests of his own department in the field of clinical preventive medicine.*

*At the College, Doctor Havens directs the laboratories for the study of virus diseases in cooperation with the Department of Bacteriology. His teaching in connection with this work is in line with his responsibilities in the control of infectious diseases in the Department of Preventive Medicine.*

*Doctor Havens will continue all his present duties while serving as Assistant to the Dean. In his new capacity he will assist the Administration in forwarding and expediting the wishes and actions of the Faculty and in maintaining a close liaison between the medical school and the faculties of the colleges and universities in which our students receive their pre-professional education.*

WM. HARVEY PERKINS, M.D.,  
Dean.

## THE DEAN'S LUNCHEON

Alumni Day, June 2nd, 1949

giving the Alumnus the opportunity to see the steady growth and progress of his Alma Mater and to visit the various departments during the afternoon. Luncheon will be served at one o'clock in the Assembly Hall on the second floor of the College.

## STUDENT ADMISSIONS AT JEFFERSON

WILLIAM HARVEY PERKINS, DEAN

*Policies and Standards*

Jefferson's primary aim is to graduate real and outstanding men of medicine—educated, informed, cultured, scientific physicians—men of honesty and integrity who will be outstanding in their professional achievements and leaders in their communities. Because of this, Jefferson must select students whose development at the time of application, and whose potentials of development, give ample promise of their capacity and desire to benefit to the full from the exacting medical education the college has to offer. Therefore, certain selection policies have evolved over the years which are not readily ascertained from the reading of the regular statements on admission requirements in the College Circular of Information. The following statement may clarify these practices without going into details.

*Academic*

Requirements on subject matter are devised to assure that the applicant has necessary mastery of tool subjects required for intellectual pursuits on the medical college level; the essential subject prerequisites to the freshman-year courses to be taken at Jefferson; and the general education necessary to make him intelligent in the broader fields of human understanding.

*Scholastic*

No precise, inflexible scholastic grade can be set as a fixed criterion for admission, since the quality of the applicant's scholastic achievement shows some variation from year to year, from one curriculum to another, and from one undergraduate college to another. The significance of any individual's scholastic achievement is relative in terms to the substantial number of superior applicants in present years with whom he must compete for the limited number of openings.

A single measure of scholastic ability cannot be depended upon in making these competitive selections. The applicant's undergraduate scholastic grades are of great importance. These are supplemented by an estimate of the standing of his undergraduate college and his relative rank among his classmates in that school. These measures of achievement and ability are the applicant's first hurdle.

*Other Mental Qualities*

The best brainpower would often fail to achieve success in medical college—and in professional life, because of deficiency in other important aspects. It is recognized that with better than average but not outstanding intellectual ability a student may be successful in college and life, because of such intangible factors as motivation, will-power, drive, meticulous attention to detail, faithful application to study, agreeable personality traits, good

social and emotional adjustment, a wholesome philosophy of life, well-balanced participation in life's activities, and similar important personal qualifications. These qualities, so far as they can be evaluated are weighed along with scholastic ability.

#### *Character Personality*

Effort is made to make certain that an applicant is of good character and sincere in his purposes in life. It is recognized that personal habits, individual traits and personality play an important part in success or failure. Such factors are estimated from the letters of recommendation from undergraduate medical preceptors, from recommending physicians and previous teachers, and from the very important personal interviews with the Dean.

#### *School Activities*

Estimates of the factors of a student's adjustment to life and leadership may be made from a review of the student's work experiences and his extra-curricular and social activities. Attainments in these fields are more significant than mere expressions of interest or the eulogies from enthusiastic sponsors. The applicant who shows good participation records in such activities will be given preferential consideration, other things being equal.

#### *Adjustment*

We try to avoid such hazards as physical handicaps for which the College is unequipped to make compensation, inadequate financial resources requiring an undue amount of work for self support, inability to adjust to the circumstances of medical education which would set the student apart from fellow students and make his student life intolerable. This group of factors is made up of many and often undefinable characteristics which, in the student's own best interest, would make it a serious mistake to admit him.

#### *Residence*

Most of the states of the Union and several foreign countries are represented from time to time in Jefferson's student body. There is a tendency, which is encouraged, to have a greater than proportionate number of students from the eastern area and, more especially, from the state of Pennsylvania.

#### *Sons of Alumni*

Other factors being equal, sons of alumni are given preferential consideration when applicants are being selected for admission. To a lesser degree the same applies to other near relatives of an alumnus. This is the whole policy in a word.

An applicant who lacks the basic qualifications for admission, in relation to the very high competition for admission, cannot be given priority over a better qualified applicant solely because he is the son of an alumnus. It must be recognized that this becomes a problem not merely among students clearly qualified for admission yet necessarily are set aside in the competition, but also in the inescapable border-line area of students and their admission qualifications.

If there were only isolated instances of sons of alumni who were on the borderline the College might take the chance on that son's survival in his class. But with the necessity of declining admission to many clearly qualified candidates today such a policy would not be to the best interests of the College, its entire alumni body and to its future alumni—the students.

### *Today's Situation on Applications*

Many alumni will be interested in the very substantial increase in recent years in the number of applicants for matriculation.

A study of past years indicates that a distinction must be made between the number of interested prospective applicants and the number of bona fide filing candidates for matriculation. The records show the following figures.

Twenty years ago—for the Session 1929-30 . . . 695 applications for admission were received; approximately 2,500 indicated an interest in securing admission; 156 were accepted in the class. (During this period there were 16,655 students applying for admission to medical schools throughout the country.)

Ten years ago—for the Session 1939-40 . . . 709 applications for admission were received; over 3,000 exhibited an interest in gaining admission; 134 were accepted into the class. (In this period 11,800 students were applying for admission to medical schools.)

For the Session 1948-49 . . . 5,834 requests for applications were received. Of this number 1,299 were declined the application, because the request was received too late, or because there was not room enough to receive them. There are 4,062 applications on file. All represent bona fide applicants for admission to that session.

It is conservative to say that there has been more than a seven-fold increase in bona fide candidates for matriculation in the College in the last decade.

A national survey on applications to medical schools report that "there must be 24,000 to 29,000 applicants for this peak year . . ." There were 83,228 applications reported for 5,502 places in the freshman classes of 67 reporting (of 78) medical schools in the United States. If ten unreported colleges were added, there would be a total of 100,000 applications . . . When a student applies to several medical schools he accounts for several applications. In 1941 students averaged 2.8 applications each. For 1948, pre-medical students average . . . around 3.8 applications each. These figures indicate that about 75 per cent of pre-medical students will not be accepted."

Jefferson is one of the two largest medical schools, and has a relatively high number of freshman class openings. The national report lists Jefferson with the highest reported number of completed applications of any of the medical schools. The report also shows that of the medical schools which admit a freshman class numbering 90 or more, Jefferson has the highest reported ratio in the nation of Number of Completed Applications to the Number to Be Admitted.

While this is a basis for pride in Jefferson—that so many pre-medical students seek a Jefferson training—there is an ever-present problem to the institution in the thousands of young candidates (95%) who must be denied such an opportunity.



## FACTS CONCERNING MEMBERS OF THE SENIOR CLASS

Session 1948-1949

STUDENT	NAME OF RELATIVE	SCHOOL	YEAR
Boggs, Lawrence K.	<i>Uncle</i> : Lloyd K. Boggs, M.D.	University of Georgia School of Medicine	1924
	<i>Aunt</i> : Lonita M. Boggs, M.D.	Medical College of the State of South Carolina	1930
Boley, Scott Jason	<i>Father</i> : Henry B. Boley, M.D.	Jefferson Medical College	1916
Booher, David Oscar	<i>Uncle</i> : Frank H. Booher, M.D.	Vanderbilt University School of Medicine	1934
Boyer, Walter Ernest, Jr.	<i>Father</i> : Walter E. Boyer, M.D.	Medico-Chirurgical College	1907
Chmielewski, Edward John	<i>Brother</i> : Anthony E. Chmielewski, M.D.	Jefferson Medical College	1946
Cleveland, Samuel M.	<i>Grandfather</i> : Samuel M. Cleveland, M.D.	Hahnemann Medical College	1875
Crosby, William Victor Anderson	<i>Uncle</i> : John Charles Adams, M.D.	Tulane Univ. of Louisiana, College of Medicine	1918
	<i>Uncle</i> : Fred Adams, M.D.	Tulane Univ. of Louisiana, College of Medicine	1920
Crowder, Richard Brent	<i>Great-Grandfather</i> : John Patrick Compton, M.D.	Preceptor	
Deck, Roy, Jr.	<i>Father</i> : Roy Deck, M.D.	Jefferson Medical College	1914
deVillers, Paul Romeo	<i>Uncle</i> : William J. Bondreau, M.D.	Jefferson Medical College	1924
Eichman, Peter Libert.	<i>Father</i> : Edward A. Eichman, M.D.	Jefferson Medical College	1905
	<i>Cousin</i> : M. Eugene Eichman, M.D.	Jefferson Medical College (Sept.)	1944
	<i>Cousin</i> : Joseph C. Eichman, M.D.	Jefferson Medical College	1945
	<i>Cousin</i> : William Steiger, M.D.	University of Pennsylvania School of Medicine	1943
Ellis, Richard Alvin	<i>Cousin</i> : Arthur First, M.D.	University of Pennsylvania School of Medicine (Assistant Professor of Obstetrics and Gynecology, Jefferson Medical College)	1924
Feddeman, Frederick Augustus	<i>Father</i> : Charles Edward Feddeman, M.D.	Jefferson Medical College	1911
Felderman, Eugene Saul	<i>Father</i> : Leon Felderman, M.D., (deceased)	Medico Chi College	1911
Fields, Joshua Joseph	<i>Uncle</i> : Morris H. Schaeffer, M.D.	Temple University, School of Medicine	1930
Fisher, Norman J.	<i>Father</i> : Mulford K. Fisher, M.D.	Jefferson Medical College	1906
	<i>Uncle</i> : Arnold Goldberger, M.D.	Jefferson Medical College (Instructor in Obstetrics and Gynecology, Jefferson Medical College)	1933
Gelb, Albert	<i>Brother</i> : Jack Gelb, M.D.	Jefferson Medical College	1946
Hamburger, Stuart Wallace	<i>Uncle</i> : Albert Charles Hamburger, M.D.	Wayne University, School of Medicine	1926

STUDENT	NAME OF RELATIVE	SCHOOL	YEAR
Hamilton, Charles R. Jr.	<i>Brother</i> : Edward L. Hamilton, M.D.	Duke University, School of Medicine	1949
Hartstein, Paul	<i>Brother-in-law</i> : J. M. Kline, M.D.	Indiana University, School of Medicine	1939
Healy, John Russell	<i>Uncle</i> : A. C. Baker, M.D.	University of Minnesota, School of Medicine	1897
	<i>Cousin</i> : Jeannette Baker, M.D.	University of Indiana, School of Medicine	1929
	<i>Cousin</i> : John Lohman, M.D.	University of Minnesota, School of Medicine	1935
	<i>Cousin</i> : Norman H. Baker, M.D.	University of Minnesota, School of Medicine	1929
	<i>Cousin</i> : Charles E. Baker, M.D.	Northwestern University, School of Medicine	1941
	<i>Cousin</i> : Charles Hodgson, M.D.	University of Minnesota, School of Medicine	1932
	<i>Cousin</i> : Russell Hodgson, M.D.	University of Chicago, School of Medicine	1937
	<i>Cousin</i> : William H. Anderson, M.D.	University of Minnesota, School of Medicine	1941
	<i>Cousin</i> : Charles Hutchinson, M.D.	University of Minnesota, School of Medicine	1916
Huff, Charles William	<i>Father</i> : Charles William Huff, M.D.	Baltimore Medical College	1912
	<i>Uncle</i> : Wheeler O. Huff, M.D.	University of Maryland, School of Medicine	1917
Huntington, Park William, Jr.	<i>Cousin</i> : S. Dale Spotts, M.D. (Demonstrator of Surgery, Jefferson Medical College)	Jefferson Medical College	1922
Jordan, W. Edward	<i>Father-in-law</i> : Charlton C. Whittle, M.D.	Jefferson Medical College	1911
Keck, Daniel J.	<i>Cousin</i> : Herman Diehl, M.D.	Temple University, School of Medicine	1939
Kinlaw, William Bernard, Jr.	<i>Father</i> : William Bernard Kinlaw, M.D.	University of Pennsylvania School of Medicine	1920
Lilien, Otto Michael	<i>Cousin</i> : Milton Lilien, M.D.	University of Iowa, College of Medicine	1936
	<i>Cousin</i> : Bernard Lilien, M.D.	University of Iowa, College of Medicine	1933
	<i>Uncle</i> : Adolph Lilien, M.D.	University of Vienna, Faculty of Medicine	1917
	<i>Uncle</i> : Charles Lilien, M.D.	University of Vienna, Faculty of Medicine	1920
Lincoff, Milton H.	<i>Uncle</i> : Morris Weber, M.D.	University of Pittsburgh School of Medicine	1922
	<i>Cousin</i> : Alan Lincoff, M.D.	University of Pittsburgh School of Medicine	1948
	<i>Brother</i> : William Lincoff	Jefferson Medical College	1949
Lincoff, William	<i>Uncle</i> : Morris Weber, M.D.	University of Pittsburgh School of Medicine	1922
	<i>Cousin</i> : Alan Lincoff, M.D.	University of Pittsburgh School of Medicine	1948
	<i>Brother</i> : Milton H. Lincoff	Jefferson Medical College	1949

## THE JEFFERSON MEDICAL COLLEGE

STUDENT	NAME OF RELATIVE	SCHOOL	YEAR
McWilliams, Fred D.	<i>Grandfather</i> : John B. Crombie, M.D.	University of Maryland School of Medicine	1883
Ma, Koon Tuck	<i>Cousin</i> : Lin Tung Chun, M.D.	Jefferson Medical College (Jan.)	1944
Mazer, Howard	<i>Cousin</i> : Hymen D. Stein, M.D.	Jefferson Medical College	1939
	<i>Cousin</i> : A. E. Pennes, M.D.	Jefferson Medical College	1936
Michael, Robert Lee	<i>Great-Uncle</i> : J. S. Hunter, M.D.	Ohio State University College of Medicine	1898
Mitchener, Calvin Chambers	<i>Father</i> : James S. Mitchener, M.D.	Johns Hopkins University School of Medicine	1915
	<i>Brother</i> : James S. Mitchener, Jr., M.D.	Johns Hopkins University School of Medicine	1947
Moffitt, John Samuel	<i>Uncle</i> : H. F. Moffitt, M.D.	University of Pennsylvania School of Medicine	1917
Mourat, Constantine	<i>Brother</i> : Steve Mourat, M.D.	Jefferson Medical College (Sept.)	1944
	<i>Brother</i> : Nicholas Mourat, First Year Class	Jefferson Medical College	
Newman, Leroy	<i>Cousin</i> : Aaron D. Bannett, M.D.	Jefferson Medical College	1946
Orlidge, Arthur E.	<i>Uncle</i> : Homer Leroy Hill, M.D.	University of Pittsburgh School of Medicine	1912
Pace, Charles Taylor	<i>Father</i> : Karl B. Pace, M.D.	Jefferson Medical College	1914
	<i>Brother</i> : Karl B. Pace, Jr., M.D.	Jefferson Medical College	1946
Piekenbrock, Thomas C.	<i>Uncle</i> : F. J. Piekenbrock, M.D.	St. Louis University School of Medicine	1921
	<i>Uncle</i> : Charles Linnehan, M.D.	Rush Medical College	1901
Popp, George	<i>Uncle</i> : Louis Fletcher, M.D.	University of Pennsylvania School of Medicine	1920
	<i>Brother-in-law</i> : Ernest Hartman, M.D.	University of Pennsylvania School of Medicine	1949
Rodriguez, Hector F.	<i>Father</i> : Calixto Rodriguez, M.D.	Jefferson Medical College	1917
	<i>Brother</i> : Roberto C. Rodriguez, M.D.	Jefferson Medical College	1948
Rudansky, Sheldon	<i>Uncle</i> : M. Canick, M.D.	Long Island College of Medicine	1914
	<i>Uncle</i> : H. Rudensky, M.D.	New York Medical College	1931
	<i>Uncle</i> : William Rubin, M.D.	New York Medical College	1937
	<i>Cousin</i> : Leon Canick, M.D.	Long Island Medical College	1949
Saltzman, Edward Jacob	<i>Father</i> : Maurice Saltzman, M.D.	Jefferson Medical College	1922
	<i>Brother</i> : Herbert A. Saltzman, First Year Class	Jefferson Medical College	
	<i>Cousin</i> : Louis Edeiken, M.D.	University of Pennsylvania College of Medicine	1920
	<i>Cousin</i> : Joseph Edeiken, M.D.	University of Pennsylvania School of Medicine	1924
	<i>Cousin</i> : Jacob Edeiken, M.D.	University of Pennsylvania School of Medicine	1947
	<i>Cousin</i> : Herbert Kramer, M.D.	Jefferson Medical College	1947

STUDENT	NAME OF RELATIVE	SCHOOL	YEAR
Schulz, Robert Ernst....	<i>Cousin:</i> Robert Linn, M.D.....	Loyola University, School of Medicine .....	1943
	<i>Uncle:</i> Carl Krause, M.D.....	University of Vienna, Fac. of Medicine...	Date Unknown
	<i>Great-Grandfather:</i> Bernhard Krause, M.D. ....	University of Vienna, Fac. of Medicine...	Date Unknown
Smarr, Erwin Randolph.	<i>Father-in-law:</i> Louis W. Wright, M.D. ....	Jefferson Medical College..	1913
Smith, Edward C. ....	<i>Brother:</i> Howard B. Smith, M.D....	Jefferson Medical College..	1943
Spangler, Ford C. ....	<i>Father:</i> Clayton Valentine Spangler, M.D. ....	Eclectic Medical College..	1923
Stark, Robert E. ....	<i>Uncle:</i> Callistus H. Stark, M.D....	Marquette University School of Medicine .....	1929
	<i>Uncle:</i> Virgil Lynch, M.D. (Deceased 1940) .....	Marquette University School of Medicine .....	1929
Strause, Harold L., Jr. ...	<i>Father:</i> Harold L. Strause, M.D....	Jefferson Medical College..	1928
Tinsley, Jack Byrd ....	<i>Father:</i> J. E. Tinsley, M.D.....	University of Louisville, School of Medicine.	Unknown
Ulmer, George B. ....	<i>Father:</i> David H. B. Ulmer, M.D...	Jefferson Medical College..	1909
Veve, Juan Eduardo ....	<i>Grand-Uncle:</i> Miguel Veve, M.D....	University of Barcelona...	1875
	<i>Grandfather:</i> Jose Veve, M.D.....	University of Barcelona...	1875
	<i>Grand-Uncle:</i> Santiago Veve, M.D...	University of Barcelona...	1880
	<i>Father:</i> Juan Veve, M.D.....	Columbia University College of Phys. & Surg.....	1905
	<i>Uncle:</i> Jose Balaval-Veve, M.D....	Jefferson Medical College..	1904
	<i>Uncle:</i> Miguel Veve, M.D.....	Tufts Medical College....	1919
	<i>Brother:</i> Frank J. Veve, M.D.....	Jefferson Medical College..	1942
Voigt, George B. ....	<i>Father:</i> Arno C. Voigt, M.D.....	Jefferson Medical College..	1901
	<i>Uncle:</i> Harry W. Croop, M.D.....	Jefferson Medical College..	1917
	<i>Uncle:</i> George E. Voigt, M.D.....	University of Pennsylvania School of Medicine .....	1901
Walrath, Martin Henry, III .....	<i>Uncle:</i> James S. McLaughlin, M.D..	Jefferson Medical College..	1920
	<i>Cousin:</i> David William O'Brien, M.D. ....	Jefferson Medical College..	1925
	<i>Grandfather:</i> Asa S. Weaver, M.D...	Northwestern Medical College .....	1893
Weaver, John Louis ...	<i>Uncle:</i> Ross E. Weaver, M.D.....	University of Kansas School of Medicine .....	1916
	<i>Uncle:</i> Barte L. Shellhorn, M.D....	University of Chicago School of Medicine .....	1900
	<i>Uncle:</i> Glenn S. Weaver, M.D.....	University of Kansas School of Medicine .....	1924
Weinstein, Jack H. ....	<i>Uncle:</i> Alexander Weinstein, M.D...	Columbia University College of Phys. & Surg. ....	1918
	<i>Uncle:</i> Harry Goldberg, M.D.....	New York Medical College .....	1933
Whittington, Richard M..	<i>Cousin:</i> Milo Raymond Snodgrass, M.D. ....	University of Michigan, School of Medicine .....	1928
Woodside, Jack Richard.	<i>Uncle:</i> Edward E. Woodside, M.D...	Rush Medical College ....	1905
Zenz, Carl .....	<i>Wife:</i> Lillian S. Nelson, M.D.....	Womens Medical College..	1948

## THE NEW OBSTETRIC WING OF THE DEPARTMENT OF OBSTETRICS AND GYNECOLOGY

A feature of recent hospital construction that will be open to inspection by graduates at the Commencement Season is the new obstetric wing. To those who are particularly interested in modern hospital architecture and particularly in the latest and best in the construction of full term and premature nurseries, this new wing will be of especial interest, for it is doubtful that there is anything better today in these United States.

As you may or may not know, the Division of Obstetrics of the Jefferson Medical College Hospital has been interested in the problem of "rooming-in" of baby with mother, and this new floor embodies several arrangements for the making of rooming-in available to those private and semi-private patients who desire it. The new obstetric wing includes some seven private and thirty-four semi-private obstetric beds, together with commodious nurseries for the newborn and premature infants.

Every effort is being made to complete the construction work and decoration by the first of June, so that returning Alumni may make a tour of inspection of these new facilities, marking a further advance in the expansion program of the Department of Obstetrics and Gynecology.

The semi-private section of the new floor may be reached by taking the elevator of the Curtis Clinic to the ninth floor and turning directly to the right from the elevator exit. The semi-private section is connected with the private section and with the nurseries by a bridge across from the Curtis Clinic to the old and new hospitals where a superstructure of two floors has been added above the Tenth Street building.

The semi-private rooms will be unusually attractive. Plans for their decoration are being carried out by the Women's Committee. Each patient is to have a direct telephone connection with the nurse's station instead of the buzzer-call system. Each room will permit of rooming-in of the baby with the mother if she so desires. Each room will have its own lavatory. There are two of the semi-private rooms which will contain a small nursery incorporated within the scope of the room where a modified plan of rooming-in will be observed.

The private rooms will be on the tenth floor of the Samuel Gustine Thompson Annex and are of the same type as those which have served so excellently for private care in the past. They may be reached by the elevators at the Sansom Street entrance of that building.

The features of outstanding interest in the addition are the new premature nursery, and several central nurseries which represent entirely new hospital construction. The premature nurseries are air-conditioned. Within this air-conditioned unit is included a nurses' dressing room, a chart room, examination and treatment room, an incubator room, a room for small pre-matures and a room for larger pre-matures. There are accommodations in all for thirty-three premature babies. Oxygen and suction are piped in to the individual crib from tanks on the floor below.

The suite of full-term nurseries includes somewhat the same arrangement—a chart room, an examination and treatment room, and two or three adjacent nurseries which will accommodate twenty-five to thirty babies.

For the time being it is assumed that a modified type of central nursery care and rooming-in will run hand in hand on the private and semi-private service, inasmuch as opinions still differ among physicians and among patients as to the wisdom and desirability of rooming the baby with the mother.

For those who are particularly interested in obstetric floor architecture and in nursery construction, this wing will prove of unusual interest.

### THE FIFE-HAMILL MEMORIAL HEALTH CENTER

The modern approach to all medical and surgical problems should be directed toward the prevention of disease and the maintenance of a state of positive health.

However, only one of the many specialties, Pediatrics, practices in a large measure the principles of Preventive Medicine. Other branches of medicine emphasize the curative angle and, therefore, the advantages of Preventive thinking are not available at the present time to those who have outgrown the pediatricists' interest, namely, healthy adolescents and well adults.

Since greater health hazards confront this post-pediatric age group, periodic health guidance is more imperative in this span of life than during the sheltered time of childhood.

The need, therefore, for council of total health needs becomes apparent; the necessity for some sort of clearing-house for this kind of practice becomes important, since hospitals and clinics are over-burdened by those in whom the application of Preventive Medicine often comes too late.

This concept of a conveniently located center, offering total health guidance, has been the dream of Dean Perkins for years. In 1948 such an opportunity presented itself. The Babies Hospital, which had successfully specialized in all health aspects of maternal and child care, desired to expand its facilities to include those beyond the arbitrary pediatric age group.

A collaborative effort of the Babies Hospital, the Philadelphia Child Health Society and the Department of Preventive Medicine, Jefferson Medical College, inaugurated what is possibly the first complete Health Center in the United States, operated solely by voluntary agencies.

The New Health Center occupies the building of the former Babies Hospital. This modern seven-floor, fireproof structure is located at Seventh and Delancey Streets and is ideally designed to include the many functions which will be described later. Situated as it is in Southeast Philadelphia, the Health Center offers a convenient location for people living in an area where housing conditions and other environmental factors are far from ideal.

Named for the founders of the former Babies Hospital and the Philadelphia Child Health Society, the Fife-Hamill Memorial Health Center for Southeast Philadelphia has been in active operation since September, 1948.



FIFE-HAMMILL MEMORIAL HEALTH CENTER

Seventh and Delancey Streets

Philadelphia

Jefferson's particular interest in this Center is concentrated in the Health Maintenance Clinic. Here the idea of a complete health-guidance program focused at adolescents and adults is practiced.

The program for the individual is initiated by periodic health examination. The timing of such examinations is not determined by an inflexible policy, such as "Have a physical examination at least once a year" or "Be examined on your birthday," but rather dictated solely by the individual patient's requirements. Preventive Medicine and Public Health practices are individualized. This is a program of personalized Preventive Medicine.

The entire sixth floor of the Fife-Hamill Memorial Health Center is occupied by the Health Maintenance Clinic. Former cubicles have been outfitted as examining rooms for each student. A special room for gynecological and other examinations is completely equipped. The director, who is Assistant Professor, Dept. of Preventive Medicine, Jefferson Medical College, occupies an office which is also used for students' conferences. A full time secretary is stationed in a central business office, which for the moment is shared by the director's associate. Special rooms for electrocardiography and basal metabolism are also included on this floor. Quarters for a patients' waiting room and special investigation are expected to be added later.

The proper operation of a Health Center requires cooperation and coordination of many component departments and allied agencies. Integration of these many facilities is accomplished by the unselfish enthusiasm of all members of the former Babies Hospital. Too much praise cannot be given these workers for their efforts in this new project.

The following services indicate the set-up of the Fife-Hamill Memorial Health Center, and the relationship with the Health Maintenance Clinic:

*Public Health Nursing Service:* For many years specially trained, registered Public Health Nurses operated the Babies Hospital Clinics and directed a public health program of Maternity Care and Education, with health guidance on a pediatric level. In the new program, their considerable experience is now utilized to include other members of the family group. These nurses, together with the Jefferson students, visit the home of registrants of the Fife-Hamill Memorial Health Center, thereby affording these seniors an unusual opportunity for the study of environmental and family problems. Appreciation of the patient as an individual who is the result of his heredity and his environment is a refreshing innovation in the medical curriculum.

*Nutritional Guidance:* A full time nutritionist is on duty at the Health Center and is consulted by all departments. Her entire morning is devoted to the Health Maintenance Clinic, where matters both of nutrition and purchase and preparation of foods, are discussed with the student and his patient. Thus is brought to the medical curriculum, necessary emphasis on optimum nutrition and a practical approach to food problems.

*Sight Conservation:* A qualified ophthalmologist conducts a consultation period once weekly for clients with difficulties concerning this particular specialty.



*Otolaryngological Service:* Patients are referred to this department for all conditions referable to the ear, nose or throat. Operative cases are sent to various hospitals in the vicinity.

*Gynecological and Obstetrical Service:* Although the senior students do pelvic examinations on all female clients of the Health Maintenance Clinic, one morning weekly is reserved for special gynecological studies conducted by Dr. George W. Bland of Jefferson Hospital. Papanicolaou smears and cervical surface-biopsies are done on all patients, the slides being examined by a pathologist at Jefferson Hospital. Cases requiring special treatment or operations are subsequently referred to the patient's private physician or to a hospital of her choice.

*Maternal Health:* Technic in planned parenthood is taught in a special session by the Planned Parenthood Association.

*Laboratory:* An excellently equipped general laboratory occupies part of the fourth floor. Here a qualified technician performs routine laboratory studies on each patient of the Health Maintenance Clinic, namely complete blood count, routine urine examination, sedimentation rate, blood serology. Special blood chemistry and bacteriological tests are available when indicated. Electrocardiograms and basal metabolism tests are a function of this department.

In addition to the above facilities housed in the Fife-Hamill Memorial Health Center, special studies are performed through the cooperation of other institutions. The Henry Phipps Institute routinely take photo-fluoroscopic X-rays on all patients for evidence of pulmonary tuberculosis.

Close cooperation with all departments of Jefferson Medical College and Hospital is maintained, as well as with Pennsylvania Hospital and Mt. Sinai Hospital. Records of treatment or operations are sent to the Health Maintenance Clinic to be incorporated in the history of each patient. Thus a complete and current history is maintained at all times.

Since the program in the Health Maintenance Clinic is essentially a teaching one, senior students of Jefferson Medical College, in sections of six to seven men, spend one to two mornings weekly for a five-week period. In addition to a conventional history they are taught the approach to a complete, social and economic history. After an exhaustive physical examination, the students either individually or in groups, discuss the case with the director, his associate, or other staff members. The patient is then appraised of his particular needs and then either referred to a special clinic for treatment or instructed to return to the Health Maintenance Clinic for a periodic health examination on a given date.

This innovation offers future physicians a positive approach toward the prevention of disease. In a practical manner, all the complex problems besetting an individual are uncovered. While the answers to these queries may not be apparent at this time, a Health Maintenance Clinic is a decided step toward the ultimate aim of Preventive Medicine.

GULDEN MACKMULL, M.D.,

*Director of Health Maintenance Clinic.*

## RADIATION THERAPY CONSOLIDATED UNDER DR. EBERHARD

Since 1943 radiation therapy has been developed into a clinical division of the Department of Radiology and combined with the Lucy B. Henderson Radium Foundation Clinic. Since January 1946 the Therapy Section has been under the direction of Dr. Theodore P. Eberhard.

In order to provide the physical facilities for this development and to establish the proper psychological attitudes in the Residents working in the Section, the Curtis Clinic Therapy Section was rebuilt. A large, well-lighted waiting room and record office was made from the old treatment room, generator room, and hallway. Opening from this on the west side are a resident's office, an examining room, and a deep therapy treatment room. The examining room serves also as the radium work-room and utility room. It is completely equipped for E. N. T., Gyn., and rectal examinations, biopsies, and radium implantations. Serial color photographs before and after treatment are taken of all cases presenting visually demonstrable lesions. The section has its own Coreco-Bucky camera which is used for color photography of the various gross pathologic lesions. The use of this for teaching purposes is invaluable. A 220 kv. unit comprises the deep therapy machine. A 100 kv. superficial therapy unit has been acquired recently and will be housed in a treatment cubicle on the south wall of the waiting room. A special high intensity soft radiation Phillips apparatus has also been added for use in so-called contact x-ray therapy.

The 775 mgms of radium element has been for the most part "re-packaged" for more convenient and more universal application.

We are ready to co-operate with any and all departments needing irradiation as a modality, and can co-operate in all teaching activities as regards radium application.

A Geiger counter has been added to our equipment for measurement of irradiation, particularly in connection with isotope therapy. We have also added other monitoring apparatus.

Examining and biopsy equipment similar to that in the clinic has been installed in the Thompson Annex Therapy Section for private patients.

The radiology resident program includes six months in X-ray and radium therapy at Jefferson Hospital and six months at Memorial Hospital for Cancer and Allied Diseases in New York City. During the six months at Jefferson, the first three months are spent assisting Dr. Eberhard with the private patients and in the second three months, the men are given somewhat greater responsibility conducting the treatments in the Curtis Clinic. In addition to the didactic teaching in Radiation Physics which the men get at the Moore School of Engineering, Dr. Eberhard gives a thirty-six-hour course in the natural history and radiation therapy of the various tumors and the treatment of the benign conditions met with in general radiation practice. Professor Clarence Livingood, head of the Department of Dermatology, has been giving an extra ten hours of teaching on dermatologic lesions. The various dermatologic conditions exclusive of malignant growth needing X-ray

therapy are treated in co-operation with the personnel of the Department of Dermatology.

All patients treated by radiation are followed, the routine follow-up clinic being held in the department each Monday afternoon. Weekly departmental conferences and small research problems complete the training program at Jefferson.

Dr. Eberhard and the resident staff also conduct the radiation therapy and diagnostic work at the Skin and Cancer Hospital.

Dr. Eberhard is a graduate of Western Reserve University School of Medicine, 1930. After six months of post-graduate work in the Department of Anatomy, he served his internship at Lakeside Hospital in Surgery. This was followed by two years' work in Pathology in Boston, under Dr. Shields Warren. In 1934, he went to the Columbia-Presbyterian Medical Center in New York for two more years of Surgery, most of it devoted to surgery of malignancies of the head and neck, and a year of Surgical Pathology. By this time his interest in cancer had led him into the field of radiation therapy, and in 1937 he joined the Staff of the Radiology Department. In 1939 he was named the first Medical Director and Radiotherapeutist of the Ellis Fischel State Cancer Hospital at Columbia, Missouri, a post he held until entering the military service in October 1942. He served with the 8th General Hospital in New Caledonia as Chief of X-ray until the end of the war. He was discharged from active duty and joined the Staff of Jefferson in January 1946.

Dr. Eberhard is a Diplomate of the American Board of Radiology, a member of the Radiological Society of North America, the American Association for Cancer Research, the Philadelphia Roentgen Ray Society, the Philadelphia County Medical Society, and Jefferson Society for Clinical Investigation. He now holds the rank of Associate Professor of Radiology and Co-ordinator of Cancer Teaching at Jefferson.

PAUL C. SWENSON, M.D.,  
*Professor of Radiology.*

## DEPARTMENT OF PREVENTIVE MEDICINE

Although Preventive Medicine is an integral part of general medicine, a special Department of Preventive Medicine is necessary to teach medical students the specific problems and methods of research and its application.

Doctor Perkins has developed this Department into three Divisions—Epidemiology, Industrial Medicine and Clinical Preventive Medicine.

The Division of Epidemiology is directed by Doctor W. Paul Havens, Jr., with one part-time Assistant, one Research Assistant and several technicians. Clinical work is done largely at the Pennsylvania Hospital. The research work of this Division is concentrated on viral hepatitis, and is conducted in a fully equipped laboratory on the sixth floor of the College building. Allied investigations in hepatic functions are being carried on in

conjunction with the Departments of Biochemistry, Physiology and Anatomy. In addition, Doctor Havens, as Consultant to the Secretary of the Army, is engaged in pursuing certain clinical investigations in hepatic disease in U. S. Army hospitals in Germany and in the Valley Forge General Hospital. This work is supported by the Army Epidemiological Board, and is carried on in conjunction with the Yale University School of Medicine and the University of Pennsylvania School of Medicine.

The laboratory of the Division of Industrial Medicine is located temporarily on the fifth floor until larger quarters allotted to this Division are ready for occupancy. The Director of the Division is Doctor Heinrich Brieger; he is assisted by two chemists and several technicians. The activities of this Division have been divided between basic and toxicologic research on materials important in Industry.

The Division of Clinical Preventive Medicine is operated in conjunction with the Health Maintenance Clinic which is part of the Fife-Hamill Memorial Health Center, Seventh and Delancey Streets. Chief of the Division and Clinic is Doctor M. Gulden Macmull, with Doctor Thomas F. P. Leo as clinical Assistant. An opportunity is given here to Senior students to apply diagnostic methods to families and other groups and to study the influence of environmental factors on health.

All Divisions work in close cooperation with the other Departments of the College and with The Jefferson Hospital.

Teaching of Biostatistics will be added to the program, thus completing instruction in Preventive Medicine. The Associate Professor of Biostatistics, to be appointed soon, will be available to all Faculty and Staff members seeking the advice of a statistician.

HEINRICH BRIEGER, M.D.

## GASTROINTESTINAL RESEARCH

During the past two years the facilities for gastrointestinal research have been increased by the use of a laboratory on the second floor of the College, under the Department of Therapeutics. This supplements the clinical investigation carried on in the Gastrointestinal Clinic and permits an increased correlation of clinical and laboratory work. The following problems currently under investigation are supported in part by a research grant from the Division of Research Grants and Fellowships of the National Institutes of Health, U. S. Public Health Service, and the National Drug Company of Philadelphia.

For a number of years we have worked in collaboration with Dr. Abraham Cantarow on functions of the liver dealing with the excretion of dye and pigment. Since the war, with the assistance of Dr. William J. Snape in preparing Thomas-type chronic bile-fistula dogs this work is being considerably advanced. We are also continuing to study hepatic function by measuring the excretion of bromsulfalein in the bile in selected patients who have questionable liver disease. A number of papers dealing with the experi-

mental and clinical results of these studies so far obtained have appeared in the literature.

A clinical laboratory and therapeutic trial of anion exchange resins in peptic ulcer was carried out during the past year and a half in collaboration with Dr. Martin E. Rehfuess.

A new method of testing pancreatic function by producing hyperamylasemia with secretin is being studied clinically.

A group of sixty patients with peptic ulcer have been treated with intestinal extract for the past twenty months. Data bearing on the results of this treatment will form the basis of a report to be presented with Dr. M. H. F. Friedman, before the A. M. A. meeting in Atlantic City, in June, 1949. As a consequence of the efforts of the recently formed National Committee of the American Gastroenterological Association for the Study of Peptic Ulcer, we are taking part in a general program of investigation of all phases of peptic ulcer. Therefore additional studies to evaluate the therapeutic effect of urine extracts (urogastrone and anthelone) in ulcer is planned.

A newly appointed research Fellow in Gastroenterology, Dr. George Quintero, will be added to the Staff in June of this year.

C. WILMER WIRTS, M.D.

### JEFFERSON SOCIETY FOR CLINICAL INVESTIGATION

The twenty-third year of the Jefferson Society for Clinical Investigation was opened with the Annual Dinner on October 28, 1948, at the University Club. Eighty-four members and guests were present. Dr. Cecil K. Drinker, formerly a professor of physiology at Harvard Medical School, and widely known for his work on the physiology of the lung and its lymphatics, addressed the Society on "Clinical Investigation—What It Has Become and What It Demands."

Officers for the year 1948-49 were:

<i>President</i> .....	DR. JOHN T. EADS
<i>Vice-President</i> .....	DR. KELVIN KASPER
<i>Secretary</i> .....	DR. C. WILMER WIRTS
<i>Treasurer</i> .....	DR. JOHN HODGES

The Society has grown considerably since the war and now consists of:

Active Resident Members .....	156
Associate Members .....	88
Emeritus Members .....	33
Honorary Members .....	15
Non-Resident Members .....	18

making a total of 310 members.

The Chairman of the Program Committee, Dr. Frederick B. Wagner, Jr., has been most successful in arranging interesting and attractive programs which have had a larger average attendance than any year since the war. This resulted, to a large extent, from a new departure inaugurated by Dr. Eads in enlarging the Program Committee. At present almost all departments of the College and Hospital are represented on the Program Committee.

The Society has been honored during the past year by a new award. Dr. Augustus Eshner, of the Class of 1888, has established a prize of Fifty Dollars to be awarded annually by the Society to the member of the Junior Staff of the Hospital or College who has made the most outstanding contribution to the art or science of medicine. The award will be made each year at the Annual Dinner of the Society in October.

C. WILMER WIRTS, M.D.,  
*Secretary.*

### LIBRARY NEWS

In reporting another year's activity in the Samuel Parsons Scott Memorial Library, we would like to show the alumni of the Jefferson Medical College in what ways the library has grown to better meet the needs of the students, staff, alumni and other readers. One measure of this growth is shown in the fact that 1,068 volumes have been accessioned during this year.

One of the sources of these books has been the authors who are members of the alumni or faculty of the college. Dr. Mario Castallo (1929) presented to us a copy of the new edition of his *MECHANICS OF OBSTETRICS*. Dr. Abraham Cantarow (1924) presented to the library a copy of *DISEASES OF THE GALLBLADDER AND ALLIED STRUCTURES*, by Moses Behrend. Dr. Cantarow was one of the collaborators on this work, the preface of which was written by Dr. Thomas A. Shallow (1911). From Dr. Arthur N. Foxe (1927) we have received a copy of the second edition of his book, *PLAGUE; LAENNEC (1782-1826)*. Dr. Charles M. Gruber has given us a copy of his new book, *HANDBOOK OF TREATMENT*. Dr. Peter A. Herbut presented to the library a copy of his new book, *SURGICAL PATHOLOGY*. From Dr. Martin E. Rehffuss we have received a copy of the new text-book, *PRACTICAL THERAPEUTICS*. Dr. Alison H. Price (1938) was co-author of this work. From Dr. Hobart A. Reimann we received a set of the fourth edition of his *TREATMENT IN GENERAL PRACTICE*.

In addition to these we have received many new books directly from the publishers. We have just recently received fourteen books from the C. V. Mosby Company. These books constitute the first contribution of Mosby publications which will now be coming to us as each new title appears. The following medical publishers have for some time been sending us copies of

their new books: Appleton-Century-Croft, The Blakiston Company, F. A. Davis Company, Lea & Febiger, J. B. Lippincott Company and the W. B. Saunders Company.

The remainder of our books have come to us from many sources, from interested alumni, from members of the faculty and staff, from other friends of the library and by purchase. At the present time the library has over 45,000 volumes. We are grateful to the many friends who have made this growth possible.

While we often think of the value of a library in terms of the books on the shelves, oftentimes the journal holdings of a library are of even more importance. This is especially true in a scientific library. During the past year we have entered subscriptions to 32 additional journals so that now we receive over 400 journals regularly. While we subscribe to many of these periodicals, still we receive many as gifts. Some come to us from the organizations and companies that publish the journals, others come from the alumni and staff of the college and from other interested friends. Notable among the donors of journals are the Blakiston Company and the W. B. Saunders Company, from whom we receive many foreign medical and scientific periodicals.

A special exhibit illustrating medical education and practice one hundred years ago was planned in connection with the Centennial Meeting of the Medical Society of the State of Pennsylvania for October 3 to 7, 1948. This exhibit was comprised of books, photographs, pamphlets, and instruments connected with the history of the Jefferson Medical College and the practice of medicine in the State of Pennsylvania one hundred years ago. A splendid case of instruments and some of the photographs in this exhibit were displayed through the courtesy of Dr. Clarence D. Smith (1907). This exhibit will be maintained through Commencement Week and visiting alumni are invited to inspect it.

The library still maintains a reprint collection of the publications of the alumni and staff of the college. We are grateful for the many interested alumni who have sent us reprints during the past year and remind others that we would like to add their reprints to this collection.

All members of the alumni association are invited to visit the library whenever they are in Philadelphia. You will always be welcome and we will be glad to assist you in any way to make your visit to the college more pleasant.

JOSEPH J. WILSON,  
*Librarian.*



THADDEUS L. MONTGOMERY, M.D., '20  
President, Alumni Association

*To the Alumni of Jefferson—Greetings!*

*It is my privilege at this time to extend to you salutation in the name of the Executive Committee and the Home Office of the Alumni Association, and at the same time to invite you to return to your Alma Mater at the One Hundred and Twenty-fifth Commencement Season.*

*Your old friends, your teachers, your young medical students and graduates—be they nephews, sons, or grandsons, look forward to welcoming you again. A program has been arranged by our excellent Clinic Committee to meet the most exacting and fastidious desires scientifically. The college and hospital open its doors for your inspection. The changes in structure and developments in teaching function will attract your interest. New officers of administration desire to make your acquaintance. Classes will meet in reunion luncheons, and all will gather at the Annual Alumni Dinner, the final and main attraction of the week's program.*



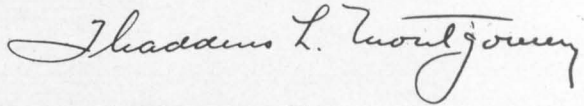
*There is much at Jefferson now to attract both the connoisseur of the old and the scientific pursuer of the new. This venerable institution still carries with it all of those ancient traditions which have served to cement so firmly the bond between school and alumni. But now within the four walls of its College and Hospital and within the circle of its Board and Faculty the new in research and in teaching program is encouraged. Of the latter there is a great deal to see that will stimulate your interest.*

*In all the years of closely knit association between Jefferson and its graduates there has never been a time when the feeling of common interest and purpose has run higher. The culmination of the first year's efforts in Annual Giving has demonstrated the truth of this observation beyond all peradventure of doubt. Never has a group of alumni responded in greater numbers or with more enthusiasm to an appeal from their Alma Mater than has been demonstrated by you, the recent and old graduates of Jefferson.*

*We have a right to be especially proud of this record. We have a right to be proud of our past and enthusiastic about our future. We have a right at this Commencement Season to again inspect the fruits of our labor and enjoy them.*

*Here at Jefferson we will look forward to seeing you again.*

*From your President,*



TO OUR ALUMNI:

*Never in the one hundred and twenty-five years of our history has it been so important and necessary for all of us to work together for our school.*

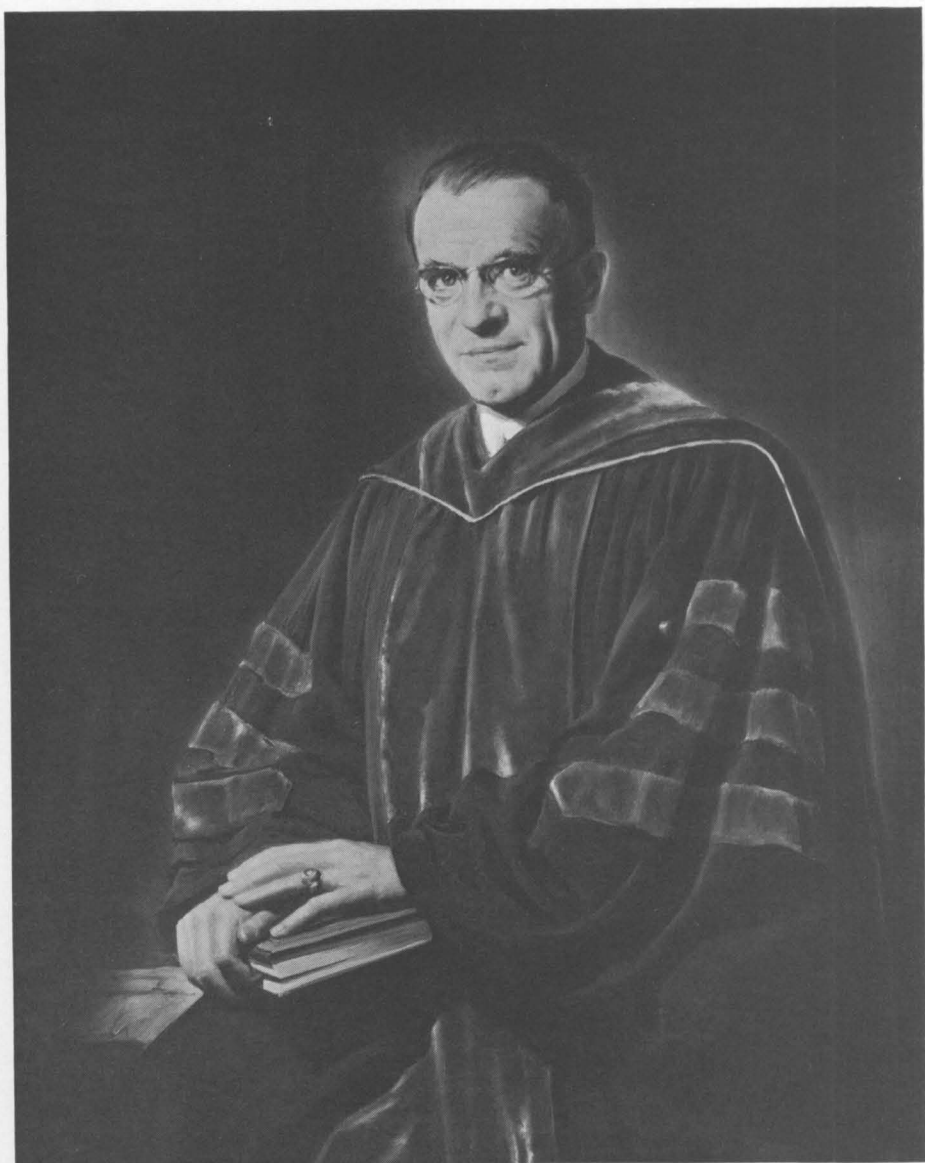
*We stand almost alone as the greatest private institution devoted solely to the education and training of physicians. As such, we carry the responsibilities of a NOBLESSE OBLIGE to maintain our integrity and very existence against the forces of the day that would drive us, with others, into a malignant mediocrity.*

*Evidence comes to us from all sides that our Alumni and friends are showing a loyalty that is unequalled anywhere. Not only your gifts, but the many comments and expressions of confidence that accompany them prove this to be true.*

*Those of us who teach here and guide the destinies of your Alma Mater cannot express our appreciation of your support in words, but can hope only that what we do will justify your faith in the indestructible future of Jefferson.*



Dean.



LOUIS H. CLERF, M.D., LL.D.

Professor of Laryngology and Broncho-Esophagology

*Portrait presented to the College by the Class of 1949*

SUMMARY OF CLASS STANDINGS  
 Alumni Annual Fund, Period from June 1, 1948 to May 2, 1949

Class	Class Agent	City of Residence	Living Class		Number Contributors	Percent Participation	Amount Contributions
			Members	Contributors			
1875	Dr. George C. Lippincott	Salem, N. J.	1	1		100.	20.
1876	Dr. John B. Carrell	Hatboro, Pa.	1				
1878	Dr. Edmund B. Montgomery	Quincy, Illinois	3	1		33.3	10.
1880	Dr. William H. Ziegler	Philadelphia, Pa.	3	1		33.3	100.
1881	Dr. John McLean	Chicago, Ill.	2				
1882	Dr. John F. Mentzer	Ephrata, Pa.	7	2		28.6	150.
1883	Dr. Henry F. C. Heagy	Cochranville, Pa.	3				
1884	Dr. Fayette C. Ewing	Pineville, La.	6	1		16.6	100.
1885	Dr. Joseph J. Stewart	Westminster, Md.	8				
1886	Dr. J. Elmer Porter	Pottstown, Pa.	14	9		64.4	908.
1887	Dr. Edwin E. Graham	Philadelphia, Pa.	7	3		43.0	85.
1888	Dr. Augustus A. Eshner	Philadelphia, Pa.	11	3		27.2	90.
1889	Dr. S. Horace Scott	Coatesville, Pa.	12	3		26.8	80.
1890	Dr. F. Kline Baker	Philadelphia, Pa.	17	5		29.4	70.
1891	Dr. John Gibbon	Media, Pa.	17	4		23.6	116.
1892	Dr. Joseph H. Cloud	Ardmore, Pa.	14	3		21.4	60.
1893	Dr. Wm. H. Bodenstab	Bismarck, N. D.	23	9		39.0	564.
1894	Dr. Frederick H. Mills	Upper Darby, Pa.	20	11		55.0	277.
1895	Dr. John B. Lowman	Johnstown, Pa.	40	13		33.3	317.
1896	Dr. J. O. Arnold	Philadelphia, Pa.	42	10		31.	330.
1897	Dr. Leighton F. Appleman	Philadelphia, Pa.	36	16		44.5	515.
1898	Dr. George T. Tracy	Beverly, N. J.	11	5		45.0	95.
1899	Dr. F. Mortimer Cleveland	Philadelphia, Pa.	24	10		41.5	298.
1900	Dr. D. Randall MacCarroll	Philadelphia, Pa.	34	11		32.6	180.
1901	Dr. Nathan P. Stauffer	Philadelphia, Pa.	57	18		31.6	703.60
1902	Dr. Thomas F. DuHigg	New York, N. Y.	58	32		55.	797.
1903	Dr. Charles R. Heed	Philadelphia, Pa.	62	34		55.	852.
1904	Dr. Charles W. Bonney	Philadelphia, Pa.	61	23		37.8	970.
1905	Dr. Joseph A. Biello	Philadelphia, Pa.	80	20		25.	607.
1906	Dr. F. F. Borzell	Philadelphia, Pa.	97	35		36.2	860.
1907	Dr. Clarence D. Smith	Philadelphia, Pa.	58	19		32.8	1,065.
1908	Dr. Marshall C. Rumbaugh	Kingston, Pa.	89	32		36.	3,486.
1909	Dr. Harold L. Foss	Danville, Pa.	77	20		26.0	995.
1910	Dr. John S. C. Fielden, Jr.	Fall River, Mass.	84	45		53.5	2,534.
1911	Dr. Erwin D. Funk	Reading, Pa.	72	23		32.	1,185.
1912	Dr. Robert M. Lukens	Philadelphia, Pa.	94	43		46.	2,500.

1913	Dr. Richard Beebe	Lewes, Delaware	74	29	39.2	1,975.
1914	Dr. Roy Deck	Lancaster, Pa.	105	64	61.0	3,338.01
1915	Dr. Harold S. Davidson	Atlantic City, N. J.	101	42	41.5	1,512.
1916	Dr. J. Allan Bertolet	Philadelphia, Pa.	114	65	57.0.	2,870.
1917	Dr. Harold W. Jones	Philadelphia, Pa.	110	51	46.5	2,823.25
1918	Dr. Reynold S. Griffith	Philadelphia, Pa.	78	45	58.	1,015.
1919	Dr. Burgess L. Gordon	Philadelphia, Pa.	112	55	49.	2,970.
1920	Dr. Thaddeus L. Montgomery	Philadelphia, Pa.	137	62	45.5	3,610.
1921	Dr. Roy W. Mohler	Philadelphia, Pa.	95	40	42.	1,681.
1922	Dr. Austin T. Smith	Philadelphia, Pa.	72	31	43.	1,600.
1923	Dr. George J. Willauer and					
	Dr. Benjamin Haskell	Philadelphia, Pa.	123	43	35.	6,900.
1924	Dr. Abraham Cantarow	Philadelphia, Pa.	122	63	51.5	3,490.
1925	Dr. Charles Lintgen	Philadelphia, Pa.	122	42	34.4	2,449.50
1926	Dr. Vincent T. McDermott	Camden, N. J.	120	55	45.5	2,433.50
1927	Dr. Robert B. Nye	Philadelphia, Pa.	126	71	56.5	2,795.
1928	Dr. Guy M. Nelson	Philadelphia, Pa.	136	51	37.4	2,250.
1929	Dr. Mario A. Castallo	Philadelphia, Pa.	129	63	48.5	3,180.
1930	Dr. Merle M. Miller	Philadelphia, Pa.	135	38	28.2	1,135.50
1931	Dr. Charles Driscoll	Collingswood, N. J.	132	80	60.5	4,670.
1932	Dr. John C. Ullery	Philadelphia, Pa.	135	70	52.5	2,354.
1933	Dr. Charles W. Semisch, III	Philadelphia, Pa.	135	73	54.	2,253.
1934	Dr. Louis Collins	Glassboro, N. J.	138	62	45.	1,998.
1935	Dr. Joseph L. Finn	Philadelphia, Pa.	132	91	69.	2,738.
1936	Dr. Leonard W. Parkhurst	Merion, Pa.	131	80	61.	1,606.
1937	Dr. Robert C. McElroy	Philadelphia, Pa.	129	64	49.5	1,261.
1938	Dr. Alison H. Price	Philadelphia, Pa.	127	80	63.	2,425.
1939	Dr. Paul A. Kennedy	Buffalo, N. Y.	115	79	68.8	1,738.50
1940	Dr. Wayne P. Hanson	Long Beach, Calif.	121	86	71.	1,549.
1941	Dr. John J. Gill	Wilkes-Barre, Pa.	114	81	71.	1,239.
1942	Dr. J. Wallace Davis	Philadelphia, Pa.	127	93	73.5	1,450.
1943	Dr. Hartford E. Grugan	Williamsport, Pa.	138	90	65.5	1,329.
1944 Jan.	Dr. Edward J. Murphy	Philadelphia, Pa.	132	109	82.5	1,129.50
1944 Sept.	Dr. T. Frederick Weiland	Vineland, N. J.	135	104	77.	867.
1945	Dr. James H. Lee	Dorchester, Mass.	155	116	74.9	1,147.50
1946	Dr. John L. McCormick, Jr.	Philadelphia, Pa.	153	107	70.0	642.
1947	Dr. George R. Reinhardt	Kansas City, Mo.	148	92	62.0	502.
1948	Dr. Paul C. Eiseman	Danville, Pa.	151	51	73.8	419.
	Non-grad.					
	Dr. George Allen Bennett	Philadelphia, Pa.	129	76	59.	2,835.01
	Staff		1	1		300.
	Other Non-Graduates		135			
	Graduates Without Recorded Address		6,057	3,060	50.5%	103,419.87
	Total					

## ANNUAL GIVING FUND NEARS FINISH, EXCEEDING \$100,000

LOUIS H. CLERF, *Chairman*

The result to date of the First Roll Call of the Alumni Annual Giving Fund is impressive testimony to the interest and devotion of alumni. The \$103,419.87 which has been given by 3060 contributors to date represents the income on what is actually a living endowment of almost two and one-half million dollars. We are indeed grateful and wish cordially to thank you for this substantial contribution to the College's advancement. Every department of the college directly or indirectly will feel the impact of your interest and generosity. We hope you feel a sense of partnership that can hardly be gained in any other way.

I wish again to express my admiration of the outstanding service rendered by the class agents. Certainly the Fund has owed much of its success to the skill, imagination, hard work and personal generosity of those men who conducted the campaign within the class.

By the time alumni read this issue only a few days will remain before the Fund closes its founding year. At the Alumni Dinner, on the evening of June 2nd, we will formally present to the Board of Trustees the total given by the alumni. The books close at the end of that dinner. Following the dinner, in the latter part of June, a printed report will be mailed to all alumni. The report will contain the Founder's Roll—that is, the names (no amounts) of all contributors listed by classes and will give the financial report in detail. The uses for this first year's fund will also be described and the relation of the fund to the 1949-1950 budget of the college.

This is not the appropriate point to review Jefferson's financial situation in any detail, but it will suffice to say that under present circumstances the College will continue to need an annual Alumni Fund of \$100,000 plus, for stable and improving deficit-free operations. With such a need the stability of the Fund itself becomes a matter of first importance.

The class agents held a joint meeting with the alumni executive committee on April 28th, at which time the factors in the college's budget for the next two years were reviewed. The alumni executive committee, with the counsel of the class agents, determined the recommended uses of this year's fund. Those recommendations will be made to the trustees when the fund is formally transferred on June 2nd and will be announced in the June report.

At the Alumni Dinner, the award will be made to three classes—that class with the highest amount, the class with the highest percent participation

and the class with the highest number of givers. A scroll plaque in the alumni office will record these three winning classes for the year and the future winning classes will appear there.

As of May 2nd, the leading classes are :

*Amount*

1st—Dr. George J. Willauer, Dr. Benjamin Haskell, 1923.....	\$6,900
2nd—Dr. Charles Driscoll, 1931 .....	4,670
3rd—Dr. Thaddeus L. Montgomery, 1920 .....	3,610

*Number*

1st—Dr. James H. Lee, 1945 .....	116
2nd—Dr. Edward J. Murphy, J1944 .....	109
3rd—Dr. John L. McCormick, 1946 .....	107

*Percent Participation*

1st—Dr. George C. Lippincott, 1875 .....	100%
2nd—Dr. Edward J. Murphy, J1944 .....	82.5%
3rd—Dr. T. Frederick Weiland, S1944 .....	77%

---

## CLASS REUNIONS

The Class of 1894 will hold its 55th Reunion, beginning on June 1, 1949. It is the plan to meet at The Jefferson Medical College Library and then adjourn to have luncheon a la carte at 1:00 P. M.

COL. FREDERICK H. MILLS, *Chairman*

The Class of 1899 will celebrate its 50th Anniversary of Graduation at a luncheon at the Hotel Penn Sheraton, 39th and Chestnut Sts., Phila., Pa., June 1st at 1:00 P. M.

DR. F. MORTIMER CLEVELAND, *Chairman*

Will the members of the Class of 1904 who are interested in arranging a get-together on Alumni Day, June 2nd, please get in touch with Dr. Louis Chodoff, LOmbard 3-5956.

DR. LOUIS CHODOFF, *Chairman*

The Class of 1909 will hold a business meeting at 5 P. M., on June 2nd in the Junior Room at the Bellevue-Stratford Hotel. Cocktails will be served, and members will attend the Annual Alumni Dinner at 7 o'clock.

DR. HAROLD L. FOSS, *Chairman*

Members of the Class of 1914 will gather for their 35th reunion for cocktails on June 2, 1949 at 5:00 o'clock in a suite at the Bellevue-Stratford Hotel, at which time arrangements will be made for some activity during the A. M. A. Convention in Atlantic City. All will attend the Alumni Dinner at 7:00 o'clock following this meeting. DR. CHARLES R. GLENN, *Chairman*

The Class of 1919 will hold a cocktail party at The Drake, 1512 Spruce St., Philadelphia, on Thursday, June 2nd, 5:30 to 7:00 P. M.

DR. BURGESS L. GORDON, *Chairman*

The Class of 1924 is planning to have a dinner the evening of June 1st, at 6:30 P. M. at the Barclay, 18th and Rittenhouse Square, Philadelphia, and a cocktail party at the Bellevue-Stratford Hotel at 5:30 on June 2nd.

DR. ALBERT FEINBERG, *Chairman*

The Class of 1929 plans to hold a reunion on June 1st, immediately following the Alumni Day Clinics at Jefferson Hospital, which usually terminate between 12 and 12:30 P. M. Buses will be chartered to transport members of the class to Silver Lake Inn, Clementon, N. J., where arrangements have been completed for a most enjoyable afternoon and evening. There will be continuous music, catering throughout the day, and outdoor sports, climaxed by a sumptuous dinner and floor show in the evening. (On May 31, 1949, an evening party at a local Night Club for class members and wives.)

DR. PATRICK S. PASQUARIELLO, *Chairman*

The Class of 1934 will celebrate its 15th Reunion on June 1st and 2nd this year. On Wednesday, June 1st, cocktails and dinner will be served at the Bala-Cynwyd Country Club. Arrangements have been made for those who wish to play golf and transportation will be provided to and from the Club, leaving the College at 2:30 P. M.

On Thursday, June 2nd, cocktails will be served in the Green Room of the Bellevue-Stratford Hotel at 6:00 P. M. preceding the Alumni Banquet.

DR. C. WILMER WIRTS, *Chairman*

The Class of 1939 is planning to hold a cocktail party from 5 to 7 P. M., at the Officers' Club at the John Bartram Hotel, on June 2nd, immediately preceding the Alumni Banquet.

DR. JOHN H. HODGES, *Chairman*

The Class of January 1944 is planning to hold its 5th year Class Reunion in the form of a cocktail party just prior to the Annual Jefferson Alumni Dinner. This will be in the Pink Room at the Bellevue-Stratford Hotel beginning at 5:30 P. M., June 2nd, 1949.

DR. ROBERT L. BRECKENRIDGE, *Chairman*

The Class of September 1944 for its 5th Reunion will have its headquarters in a suite at the Bellevue-Stratford Hotel on June 2nd. The suite will be available for classmates to gather any time after 1:00 P. M. A cocktail party will be held here from 2:00 P. M. until time for the Alumni Banquet.

DR. ROBERT E. BARTO, *Chairman*

THE ROSENBERGER MEMORIAL FELLOWSHIP FUND

The following men have contributed to the Rosenberger Memorial Fellowship Fund. The total of the Fund is \$4,140.00.

1906  
William H. Kraemer

1923  
Edward Lebovitz

1912  
Louis H. Clerf

1931  
Isadore Zugeran

Contributions should be sent to the Alumni Office of the College. Make checks payable to The Rosenberger Memorial Fellowship Fund, Jefferson Medical College, 1025 Walnut St., Philadelphia 7, Pa.

Deductible Item for Income Tax, to the extent provided by law.

ENDOWED ROOM AND BENEVOLENCE FUND

Total amount of Fund .....\$6,074.80

CONTRIBUTORS TO THE ALUMNI FREE NURSING FUND, 1948-1949

May 24, 1948 Edward Lebovitz '23

June 25, 1948 Julius C. Speck '19

May 24, 1948 Frederick A. Glass '36

August 30, 1948 Leo E. Stenger '23

May 26, 1948 N. H. Koplín '09

August 30, 1948 Robert Steele '33

June 25, 1948 Leonard McGovern '28

December 29, 1948 Lewis C. Scheffey '20

June 25, 1948 M. Henry Speck '20

I enclose a contribution\* of \$..... to the Endowed Room and Benevolence Fund to provide special nursing, etc., for occupants of the endowed room for Jefferson graduates.

Name .....

Class .....

Address .....

Contributions should be sent to the Alumni Office of the College. Make checks payable to Endowed Room and Benevolence Fund, Jefferson Medical College, 1025 Walnut Street, Philadelphia 7, Pa.

\* Deductible Item for Income Tax, to the extent provided by law.



ATLANTIC CITY MEETING

OF

THE AMERICAN MEDICAL ASSOCIATION

JEFFERSON ALUMNI BUFFET SUPPER

HOTEL TRAYMORE

AMERICAN ROOM

WEDNESDAY, JUNE 8, 1949, AT 7:00 P. M.

Please make reservations at an early date

THE ALUMNI DINNER  
OF  
THE JEFFERSON MEDICAL COLLEGE

JUNE 2, 1949

BELLEVUE-STRATFORD HOTEL

Broad and Walnut Streets

7 o'clock

Please make reservations at an early date

---

CLINICS

MAY 31st

JUNE 1st and 2nd

COMMENCEMENT

JUNE 3rd

12:00 Noon

ACADEMY OF MUSIC

SUMMARY OF THE ALUMNI ENDOWMENT FUND OF THE JEFFERSON MEDICAL  
COLLEGE REPORTED AT THE ANNUAL MEETING, FEBRUARY 10, 1949

Contributions and interest from February 28, 1922 to February 29, 1948 .....	\$391,608.35
Contributions from March 1, 1948 to May 31, 1948.....	5,455.00
Receipts from start of 1st Annual Giving Drive June 1, 1948:	
Contributions June 1, 1948 to February 28, 1949 (included in report of total Annual Giving Drive).....	19,388.50*
Interest from March 1, 1949 to February 28, 1949.....	4,225.75
	\$420,677.60
Transferred to the College and Hospital Building Fund, April 16, 1930 for the purpose of com- pleting the DaCosta Research Rooms on the 6th Floor of the College .....	\$100,000.00
Contribution to the Research Building Fund to com- plete the unfinished 7th Floor of the Department of Pharmacology .....	125,000.00
Establishing the Permanent Alumni Endowment Fund (representing 25% of accumulations—in- terest to be used only) for the payment of full- time Research Fellows, preference being given to Jefferson Graduates .....	80,088.20
	305,088.20
TOTAL—February 28, 1949 .....	\$115,589.40

\*Collection of notes due in 1948/1949 are recorded in total receipts from the first Alumni Annual Giving Fund and are transferred from that fund to this account.

## BRANCH CHAPTER NEWS

On April 21, 1948, the Alumni Association of the Jefferson Medical College held a Dinner and Meeting of the Northern New Jersey Chapter at the Essex Club, Newark, N. J.

Dr. Wm. Harvey Perkins, '17; Dr. James R. Martin, '10, and Dr. Abraham Cantarow, '24, attended.

The officers are:

*President* ..... JOHN F. MORIARTY, '24  
*Vice-President* ..... JOSEPH W. HURFF, '13  
*Secretary-Treasurer* ..... FREDERICK C. DE TROIA, '35

On Wednesday, October 27, 1948, the Northern New Jersey Chapter of the Alumni Association held its meeting at the Essex Club, Newark, N. J., at 6.30 P. M. Twenty-four members were present. The speakers of the evening, representing Jefferson, were Dr. Arno E. Town, Dr. Leandro M. Tocantins and Mr. Paul F. Rake. Dr. DeTroia expressed his deep appreciation and said "the meeting was a complete success."

On March 1, 1949, the Northeastern Pennsylvania Chapter held a meeting of Jefferson Alumni in Scranton, Penna.

Clinics were held in the afternoon, followed by Dinner for Jefferson alumni. Doctors Livingood, Fry, Allbritten and Semisch covered this meeting, representing the College and Alumni. Mr. Paul F. Rake, Director of Development, also attended.

The officers are:

*President* ..... PATRICK J. MCHUGH, '11  
*First Vice-President* ..... JOHN P. DONAHOE, '04  
*Second Vice-President* ..... RODNEY L. STEDGE, '25  
*Third Vice-President* ..... LAWRENCE F. CORRIGAN, '25  
*Secretary-Treasurer* ..... PHILIP J. MORGAN, '28

On Wednesday, May 18, 1949, the Jefferson Alumni Association of the Northern New Jersey Chapter will hold its Annual Spring Meeting. The meeting will be held at 6.30 P. M. at the Essex Club, Newark, N. J.

The officers of the North Carolina Chapter are:

*President* ..... HOWARD H. BRADSHAW, '27  
*Secretary-Treasurer* ..... BENJAMIN F. MARTIN, '36

A dinner is being planned for the Southeastern Pennsylvania Chapter some time in May or June, at which time officers will be elected.

Southern New Jersey Chapter officers:

*President* ..... GEORGE A. POLAND\*, 25  
*Vice-President* ..... DAVID B. ALLMAN, '14  
*Secretary-Treasurer* ..... LAWRENCE A. WILSON, '24

\* Deceased.

New York Chapter officers:

*President* ..... THOMAS F. DUHIGG, '02  
*Secretary-Treasurer* ..... ADOLPH J. MUSANTE, '23

## OTHER MEETINGS

On June 3rd, 1948, the Board of Trustees, Dean and Faculty entertained visiting alumni at Luncheon in the Assembly Hall of the College. Everyone who attended had such an enjoyable time that they hoped this would be an annual College activity.

The Supper Meeting of the Jefferson Alumni attending the annual meeting of the American Medical Association was held in Chicago on Wednesday night, June 23, 1948, at the Sheraton Hotel. Dr. William W. Bolton, '30, was in charge of all arrangements. A total of forty-seven alumni attended, among them being Dr. Edwin B. Montgomery, a member of the class of 1878, who is still practicing obstetrics and gynecology in Quincy, Ill., at the age of 91. Other alumni who spoke at the meeting were Dr. George F. Lull, '09; Dr. Frank Hammond Krusen, a chief from the Mayo Clinic and of the Class of 1921; Dr. John B. Montgomery, '26; Dr. John Wilson, '37, and Dr. Lawrence S. Carey of the Class of 1922.

On Wednesday, October 6, 1948, the Alumni Association of the Jefferson Medical College held a Dinner in conjunction with the Centennial Celebration session of the Medical Society of The State of Pennsylvania, in the Burgundy Room of the Bellevue-Stratford Hotel, at 6.30 P. M. One hundred and eighty-three attended.

The Annual Medical Meeting of the Barton Memorial and White Haven Divisions of Jefferson Medical College was held on March 30, 1949. There were approximately 180 doctors in attendance at the Meeting.

Talks were given by Dr. Hobart A. Reimann, Magee Professor of Medicine; Dr. Wm. Harvey Perkins, Dean and Professor of Preventive Medicine; Dr. Burgess L. Gordon, Director of Barton Memorial and White Haven Divisions of Jefferson Medical College (Chairman of the Meeting); Dr. Hurley L. Motley discussed "Progress and Studies of Anthracosilicosis." The symposium on Cancer of the Lung was highlighted by the talks of Dr. Louis H. Clerf, Professor of Laryngology, Jefferson Medical College; Dr. Martin J. Sokoloff, Assistant Professor of Medicine, Jefferson Medical College; Dr. Theodore P. Eberhard, Assistant Professor of Radiology, Jefferson Medical College; and Dr. Joseph Stayman, Surgical Staff, Jefferson Medical College.

The Meeting was followed by a buffet supper, and the regular Barton Memorial Chest Conference was held, when many interesting cases of pulmonary diseases were presented and discussed.

Arrangements are being made for the Alumni Smoker during the Pennsylvania State Medical Society meeting in Pittsburgh, Pa., September 26th to 29th, 1949.

## CLINICAL AMPHITHEATRE — JEFFERSON HOSPITAL

## EX-INTERNES' AND EX-RESIDENTS' DAY

MAY 31, 1949

- 10.00 A. M. DR. HOWARD LACKEY, The Jefferson Hospital, Philadelphia.  
The Recognition and Treatment of Paroxysmal Tachycardia.
- 10.20 A. M. DR. GLENN A. DEIBERT, The Jefferson Hospital, Philadelphia.  
Wedge Osteotomy for Intracapsular Fractures of Femur.
- 10.40 A. M. DR. JOHN TEMPLETON, The Jefferson Hospital, Philadelphia.  
Experimental Reconstruction of Cardiac Valves by Venous and Peri-  
cardial Grafts.
- 11.00 A. M. DR. DANIEL LEWIS, The Jefferson Hospital, Philadelphia.  
Comparison of the Quick and Bedside Methods of Prothrombin De-  
termination.
- 11.20 A. M. DR. ISAAC MESSMORE, Geisinger Memorial Hospital, Danville, Pa.  
Hodgkin's Disease in Pregnancy.
- 11.40 A. M. DR. DANIEL BAKER, Presbyterian Hospital, New York City.  
Vertigo.
- 12.00 P. M. DR. MARTIN TRACEY, Lahey Clinic, Boston, Mass.  
Functional Indigestion.
- 12.20 P. M. DR. STANLEY MACHT, University of Maryland, Baltimore, Md.  
Physiological and Pharmacological Studies of Blood from X-ray  
Personnel.
- 1.00 P. M. Buffet Luncheon—Special Nurses' Dining Room.
- 6.30 P. M. Dinner—Barclay Hotel, 18th and Rittenhouse Square, Philadelphia, Pa.

## CLASS REUNION DAY

JUNE 1, 1949

## FIFTH CLASS REUNION

- 10.00 A. M. DR. EDWARD J. MURPHY, J'44  
Cervix During Pregnancy.
- 10.10 A. M. DR. JOHN GARTLAND, S'44  
Evaluation of Healed Colles Fractures.
- 10.20 A. M. DR. MELVIN L. BERNSTINE, S'44  
Anesthesia for Caesarian Section.

## TENTH CLASS REUNION

- 10.30 A. M. DR. JOHN H. HODGES, '39  
Sickle Cell Anemia.
- 10.40 A. M. DR. EDWARD J. TALLANT, '39  
Food Allergy: Small Bowel Alteration and Results of Therapy.
- 10.50 A. M. DR. PAUL H. FRIED, '39  
Pseudocyesis: A Psychosomatic Study in Gynecology.

## FIFTEENTH CLASS REUNION

- 11.00 A. M. DR. HUGH GRADY, '34  
Fifteen-Year Survivals of Certain Malignant Tumors.
- 11.00 A. M. DR. F. JOHNSON PUTNEY, '34  
Sialography.
- 11.20 A. M. DR. JAMES A. MANSMANN, '34  
A Few Important Clinical Studies in Bronchial Asthma.

## TWENTIETH CLASS REUNION

- 11.30 A. M. DR. WILLIAM A. ZAVOD, '29  
The Mechanism of Bullous Emphysema of the Lungs.
- 11.40 A. M. DR. JAMES SURVER, '29  
Cystic Mastitis.

## TWENTY-FIFTH CLASS REUNION

- 11.50 A. M. DR. SIMON E. DALTON, JR., '24  
Lymphoid Hyperplasia of the Epipharynx. (Film.)

## THIRTIETH CLASS REUNION

- 12.00 Noon. DR. LOWRAIN E. MCCREA, '19  
Carcinoma of the Bladder.

## ALUMNI DAY CLINICS

JUNE 2, 1949

- 10.00 A. M. DR. CLARENCE S. LIVINGOOD  
Management of Superficial Fungus Infections.
- 10.15 A. M. DR. ARNO TOWN  
Minor Surgery of Ophthalmology. (Motion Pictures.)
- 10.30 A. M. DR. N. A. MICHELS  
Variations in the Bile Duct and in the Blood Supply of the Gallbladder.
- 10.45 A. M. DR. EDWARD BAUER  
Early Recognition of Meningitis in Infancy.
- 11.00 A. M. DR. JOHN H. GIBBON, JR.  
Surgical Treatment of Carcinoma of the Esophagus.
- 11.15 A. M. DR. LOUIS H. CLERF  
Paralysis of Larynx.
- 11.30 A. M. DR. HOBART A. REIMANN  
Medical Clinic.
- 11.45 A. M. DR. PETER A. HERBUT  
Surgical Anomalies of Mediastinal Arteries.
- 12.00 Noon. DR. THOMAS A. SHALLOW  
Carcinoma of the Duodenum Below the Ampulla.
- 12.15 P. M. DR. BALDWIN L. KEYES  
Avoiding Senility.
- 12.30 P. M. DR. D. M. DAVIS  
Urinary Tract Infection—A Neglected Disease.
- 1.00 P. M. DEAN'S LUNCHEON—Assembly Hall, Second floor of the College.
- 7.00 P. M. ANNUAL ALUMNI BANQUET—Bellevue-Stratford Hotel, Broad and  
and Walnut Streets.

## JUNE 3—COMMENCEMENT DAY

- 12.00 Noon. Commencement exercises of the Class of 1949, at the Academy of Music,  
Broad and Locust Streets.

## DEATHS REPORTED DURING THE PAST YEAR

1948-1949

1879	Charles F. Brower*	Gainesville, Va.	
	Wilbur H. Hankey*	Boyertown, Pa.	
1880	Gerald C. W. Bliss*	Amherst, Nova Scotia	Sept. 17, 1948
	Corben J. Decker*	Athens, Ga.	June 21, 1948
1882	William McCombs*	Philadelphia, Pa.	Jan. 30, 1949
1883	Solomon Solis-Cohen*	Philadelphia, Pa.	July 12, 1948
1884	James S. Frizell*	Buena Vista, Ohio	
	Edward W. Piper	New York, N. Y.	
	George W. Potts	Los Angeles, Calif.	Feb. 21, 1948
1885	Ashbel F. Hustead	Waban, Mass.	Nov. 1948
1886	Alonzo L. Blalock*	Madison, Fla.	
	George W. T. Farish*	Yarmouth, Nova Scotia	
	Clinton S. Fritz*	Philadelphia, Pa.	
	Henry C. Murphy*	Salinas, Calif.	Dec. 2, 1948
1886	Lewis F. Siegler*	Philadelphia, Pa.	Jan. 29, 1949
1887	Henry M. Harman*	Frenchtown, N. J.	May 25, 1948
	William E. Matthews*	Cramer, Pa.	Oct. 29, 1948
1888	Hassell Brantley*	Spring Hope, N. C.	Aug. 29, 1948
	Frederick Schwartz*	Philadelphia, Pa.	April 19, 1948
1889	William S. Buehler*	Elizabethville, Pa.	
	Boyd Dodson*	Wilkes-Barre, Pa.	Mar. 19, 1948
	Richard G. Simmons*	Roanoke, Va.	April 6, 1948
1890	Oscar G. Fegley*	Philadelphia, Pa.	Dec. 13, 1948
	Henry Knox*	Philadelphia, Pa.	Jan. 4, 1948
	Luther Lee Vann*	Mars Hill, N. C.	Sept. 19, 1948
1891	Moses A. Foil*	Mt. Pleasant, N. C.	Sept. 14, 1948
	Herbert P. Haskin*	Williamsport, Pa.	June 21, 1948
	William L. Gilbert*	Atlanta, Ga.	May 7, 1947
	Charles S. Rottner*	Philadelphia, Pa.	April 27, 1948
	Stephen A. D. Sour*	Harrisburg, Pa.	
1893	Wilbur D. Burton*	Dover, Del.	April 7, 1948
	Frank N. Carrier*	Santa Rita, N. M.	Feb. 5, 1948
	Joseph A. Mullen*	Houston, Tex.	June 1948
	Mardelle Y. Pope*	Monticello, Ark.	Jan. 22, 1948
1894	Alfred Cornwell*	Bridgeton, N. J.	May 27, 1948
	George M. Karr	Capitan, N. M.	
	Ezra C. Rich*	Ogden, Utah	Dec. 27, 1948
	Charles E. Saulsberry*	New Brunswick, N. J.	Dec. 1, 1948
1895	James A. Craig*	Keosauqua, Iowa	Jan. 11, 1948
	Charles F. Fisler*	Clayton, N. J.	April 12, 1948
1896	Edward C. Ferguson*	Edwardsville, Ill.	Mar. 26, 1948
1897	Frederick H. Decker*	Frenchtown, N. J.	Mar. 16, 1949
	Charles W. Spragg*	Waynesburg, Pa.	May 4, 1948
1898	Frederick W. Davis*	Scranton, Pa.	July 31, 1948
	Pliny F. Stevens*	Mountain Lakes, N. J.	



1899	George M. Ferguson .....	Philadelphia, Pa. ....	Jan.	18, 1949
	Edwin H. Hayman .....	Detroit, Mich. ....	Dec.	23, 1948
1900	Pearl H. Brown .....	Neah Bay, Wash. ....	Jan.	12, 1947
1901	John Keely .....	Miami, Fla. ....	Jan.	23, 1949
	Willard D. Kline .....	Allentown, Pa. ....	Aug.	9, 1948
	Frank P. McCarthy .....	Erie, Pa. ....	Oct.	28, 1948
1902	Omer R. Gillett .....	Colorado Springs, Col. ....	July	9, 1948
	James E. McCoy .....	Brooklyn, N. Y. ....		
1903	Lee C. Adcock .....	Fairfax, Va. ....	Dec.	3, 1948
	Charles W. Allen .....	Washington, D. C. ....	Jan.	17, 1949
	Henry C. Mitchell .....	New Castle, Pa. ....	June	6, 1948
	Clair E. Robinson .....	Altoona, Pa. ....	Jan.	27, 1949
	Amos B. Schnader .....	Terre Hill, Pa. ....	Jan.	20, 1949
	Robert A. Stewart .....	Independence, Iowa ....	May	24, 1948
1904	Edwin R. Fleming .....	Medford, Mass. ....	Mar.	4, 1948
	James K. Hall .....	Richmond, Va. ....	Sept.	10, 1948
	Walter A. Taylor .....	Trenton, N. J. ....	Aug.	21, 1948
	Randall Zimmerman .....	Wilmerding, Pa. ....	Dec.	11, 1947
1905	John G. Abbott .....	West Hollywood, Calif. ....	May	22, 1948
	Charles G. Hayes .....	Montoursville, Pa. ....		
	Clark B. Holbrook .....	Ventnor, N. J. ....	Aug.	4, 1948
	Isaac R. Vincent .....	Mansfield, Pa. ....	Nov.	20, 1948
1906	John T. Aydelotte .....	San Antonio 2, Tex. ....	July	5, 1947
	Erwin B. Briggs .....	Warren, Pa. ....	Aug.	18, 1948
	Edward B. Clement .....	Salisbury, N. C. ....	June	18, 1948
	Thomas C. Cooke .....	Washington, D. C. ....	Nov.	7, 1948
	James M. Godfrey .....	Philadelphia, Pa. ....	June	30, 1948
	Julian De'Voine Guyot .....	Jefferson City, Mo. ....	Nov.	3, 1948
	Lewis J. Muthart .....	Jermyn, Pa. ....	May	12, 1948
1907	Frederick Bushong .....	Pottstown, Pa. ....	April	15, 1948
	Leonard F. Lauf .....	Columbus, Ohio ....	Dec.	16, 1948
	Henry H. Lott .....	Philadelphia, Pa. ....	Jan.	1949
	Charles E. Moore .....	Greensboro, N. C. ....	April	1948
	Thomas F. Nolan .....	New York, N. Y. ....	May	27, 1948
	James M. Smith .....	Wynnewood, Pa. ....	April	19, 1948
	Harry H. Towler .....	San Antonio, Tex. ....	April	8, 1948
1908	James A. LaGasa .....	Sacramento, Calif. ....	Oct.	7, 1948
	Bernard S. Schwartz .....	Philadelphia, Pa. ....	July	25, 1948
	Horatio L. Woodside .....	Bigler, Pa. ....	April	10, 1948
1909	Charles C. Collester .....	Spencer, Iowa ....	April	11, 1948
	James C. Lyons .....	Ridley Park, Pa. ....	June	15, 1948
	Francis M. B. Schramm .....	Johnstown, Pa. ....	Nov.	14, 1948
	Junius B. Surles .....	Four Oaks, N. C. ....	Jan.	11, 1949
1910	Thomas S. McBride .....	Shippensburg, Pa. ....	Jan.	12, 1949
	William H. Moore .....	Wilmington, N. C. ....	July	23, 1948
	Guy M. Musser .....	Punxsutawney, Pa. ....	July	23, 1948
1911	Charles P. Burke .....	Eastgulf, W. Va. ....	Sept.	24, 1948
	W. Sturgis Frankenburger .....	Carmichaels, Pa. ....	June	1, 1948
1913	Leman D. Cruice .....	Alhambra, Calif. ....	Sept.	27, 1948
	John R. Davies, Jr. ....	Philadelphia, Pa. ....	April	22, 1948
	Walter S. Garrison .....	Cedarville, N. J. ....	Mar.	6, 1949
	Louis H. Mayer .....	Johnstown, Pa. ....	July	10, 1948
	Joseph T. Murphy .....	Pottsville, Pa. ....	May	17, 1948
	James G. Strickland .....	Shamokin, Pa. ....	Feb.	28, 1949

1914	Joseph M. Barsky .....	Wilmington, Del. ....	July 31, 1948
	Eugene Rush .....	Philadelphia, Pa. ....	Feb. 20, 1949
	James D. Smith .....	Collingswood, N. J. ....	Dec. 16, 1948
	Joseph A. Speed .....	Durham, N. C. ....	Mar. 15, 1948
	Howard T. Wickert** .....	Washington, D. C. ....	Sept. 21, 1948
	Col. M. C., U. S. A.		
1915	Edgar R. Beidelman .....	Bethlehem, Pa. ....	Jan. 26, 1948
	George T. Watkins, Jr. ....	Durham, N. C. ....	May 11, 1948
1916	Edward P. Heller .....	Kansas City, Mo. ....	Aug. 19, 1948
1917	Benjamin S. Davis .....	Plymouth, Pa. ....	Oct. 10, 1948
1918	Stonewall J. Blackmon .....	Kershaw, S. C. ....	June 15, 1948
1919	Frank H. Krebs .....	Philadelphia, Pa. ....	May 30, 1948
	Hans P. West .....	Sistersville, W. Va. ....	Jan. 15, 1949
1921	Benjamin M. Stout .....	Morgantown, W. Va. ....	
1922	William C. Bastian .....	Williamsport, Pa. ....	
	Anthony B. Daniswich .....	South Mountain, Pa. ....	Feb. 8, 1949
	Paul B. Folger .....	Dobson, N. C. ....	Jan. 15, 1949
	John H. Porter .....	Andrews, S. C. ....	Sept. 17, 1948
1923	Mark A. Bausch .....	Allentown, Pa. ....	Jan. 3, 1949
	Horace Gledhill .....	Brooklyn, N. Y. ....	May 2, 1948
	George R. Hetrick .....	Birdsboro, Pa. ....	
	Wilgus A. Holman .....	London, Ohio ....	June 4, 1948
1924	Walter F. Johnson .....	New York, N. Y. ....	July 13, 1948
	William A. Rourk, Jr. ....	Myrtle Beach, S. C. ....	May 18, 1948
	Miguel E. Sala-Diaz .....	Arecibo, Puerto Rico .....	
	Maurice Silverman .....	Philadelphia, Pa. ....	Jan. 20, 1949
1925	Robert S. Lilla .....	Nucla, Colo. ....	Nov. 1, 1948
	George A. Poland .....	Pleasantville, N. J. ....	Dec. 19, 1948
1926	James T. Doster, Jr. ....	Columbus, Miss. ....	Jan. 1, 1949
	Harry M. Snyder .....	Ambridge, Pa. ....	June 1948
1927	Edmund F. Hanlon .....	Hazleton, Pa. ....	Feb. 16, 1949
1931	William M. McCormick .....	Miami, Fla. ....	Spring of 1948
1932	Julian V. Flaig .....	Philadelphia, Pa. ....	Dec. 11, 1947
1934	Harmar H. MacConkey .....	Canton, Ohio ....	April 14, 1949
1935	John H. Thomas .....	Gainesville, Fla. ....	April 9, 1948
1938	George M. Spilka .....	Pittsburgh, Pa. ....	April 4, 1948
1939	Wayne P. Beardsley** .....	Jones, Mich. ....	June 1948
	Maj. M. C., A. U. S.		
1940	Adlai S. Oliver, Jr. ....	Raleigh, N. C. ....	Jan. 18, 1949

\* Certificate sent in recognition of 50 or more years of faithful medical service.

\*\* Died while in service.



THE ALUMNI ASSOCIATION OF THE JEFFERSON  
MEDICAL COLLEGE OF PHILADELPHIA  
OFFICERS 1949-1950

*President*—THADDEUS L. MONTGOMERY, '20, Philadelphia, Pa.

*Vice-Presidents*—

THEODORE R. FETTER, '26, Phila., Pa.  
ADOLPH A. WALKLING, '17, Phila., Pa.  
DAVID A. BOYD, JR., '30, Rochester, Minn.  
HILTON S. READ, '23, Atlantic City, N. J.

*Treasurer*—AUSTIN T. SMITH, '22, Phila., Pa.  
*Recording Secretary*—F. JOHNSON PUTNEY, '34,  
2029 Delancey St., Phila., Pa.  
*Corresponding Secretary*—LEWIS C. MANGES,  
'32, 319 S. 16th St., Phila. 2, Pa.

EXECUTIVE COMMITTEE

DOUGLAS H. AITKEN, '43  
JOHN B. ALEXANDER, '39  
DAVID B. ALLMAN, '14  
EDWARD L. BAUER, '14  
J. BERNARD BERNSTINE, '22  
PAUL A. BOWERS, '37  
JAMES E. BOWMAN, '27  
ABRAHAM CANTAROW, '24  
MARIO A. CASTALLO, '29  
JOHN J. CHELEDEN, '32  
LOUIS H. CLERF, '12  
J. WALLACE DAVIS, '42  
ANTHONY F. DEPALMA, '29  
JOHN J. DETEUK, '38  
JOHN T. EADS, '26  
SHERMAN A. EGER, '29  
JOHN T. FARRELL, JR., '22  
JOSEPH L. FINN, '35  
C. CALVIN FOX, '18  
KENNETH E. FRY, '31  
JOHN H. GIBBON, JR., '27  
BURGESS L. GORDON, '19  
REYNOLD S. GRIFFITH, '18

HAYWARD R. HAMRICK, '35  
BENJAMIN HASKELL, '23  
J. IVAN HERSHEY, '32  
HAROLD W. JONES, '17  
KELVIN A. KASPER, '26  
BALDWIN L. KEYES, '17  
WILLARD H. KINNEY, '06  
WILLIAM H. KRAEMER, '06  
WILLIAM T. LEMMON, '21  
I. CHARLES LINGTEN, '25  
CLIFFORD B. LULL, '15  
M. GULDEN MACKMULL, '25  
W. BOSLEY MANGES, Sept., '44  
ROBERT A. MATTHEWS, '28  
VINCENT T. McDERMOTT, '26  
JAMES R. MARTIN, '10  
THOMAS B. MERVINE, '40  
ROY W. MOHLER, '21  
JOHN B. MONTGOMERY, '26  
EDWARD J. MOORE, '34  
CARROLL R. MULLEN, '26  
GUY M. NELSON, '28  
ROBERT B. NYE, '27

JOHN J. O'KEEFE, '37  
LEONARD W. PARKHURST, '36  
WM. HARVEY PERKINS, '17  
ALISON H. PRICE, '38  
ELI R. SALEEBY, '22  
LEWIS C. SCHEFFEY, '20  
CHARLES E. SCHWARTZ, '33  
CHARLES W. SEMISCH, III, '33  
THOMAS A. SHALLOW, '11  
MARTIN J. SOKOLOFF, '20  
CLYDE M. SPANGLER, '25  
JAMES M. SURVER, '29  
LEANDRO M. TOCANTINS, '26  
ARNO E. TOWN, '26  
JOHN C. ULLERY, '32  
FREDERICK B. WAGNER, JR., '41  
JOSEPH WALDMAN, '30  
GEORGE J. WILLAUER, '23  
HORACE J. WILLIAMS, '12  
JOHN F. WILSON, '37  
CHARLES W. WIRTS, II, '34  
OSCAR T. WOOD, JR., '34  
H. EDWARD YASSKIN, '35

STATE VICE-PRESIDENTS

ALABAMA—Edgar G. Givhan, Jr., '28  
ARIZONA—Alex. N. Shoun, '32  
ARKANSAS—Walter G. Klugh, '18  
CALIFORNIA—John L. Gompertz, '36  
COLORADO—Wilfred S. Dennis, '15  
CONNECTICUT—Francis B. Rafferty, '28  
DELAWARE—Charles M. Bancroft, '38  
DISTRICT OF COLUMBIA—Samuel M. Dodek, '27  
FLORIDA—Albert C. Kirk, '35  
GEORGIA—Harold C. Atkinson, '26  
IDAHO—Charles H. Sprague, '14  
ILLINOIS—William W. Bolton, '30  
INDIANA—Franklin B. Peck, '23  
IOWA—Sterling A. Barrett, '34  
KANSAS—Howard E. Snyder, '27  
KENTUCKY—Stuart P. Hemphill, '31  
LOUISIANA—Howard H. Karr, '32  
MAINE—Raymond E. Weymouth, '32  
MARYLAND—Harold L. Stewart, '26  
MASSACHUSETTS—John S. C. Fielden, Jr., '10  
MICHIGAN—Neal R. Moore, '26  
MINNESOTA—Francis J. Braceland, '30  
MISSISSIPPI—Raymond B. Zeller, '27  
MISSOURI—Fred L. Kneibert, '27  
MONTANA—Herbert H. James, '18  
NEBRASKA—David P. Findley, '30  
NEVADA—Clyde J. Bibb, '13  
NEW HAMPSHIRE—David K. Webster, '40  
NEW JERSEY—Henry B. Orton, '08  
NEW MEXICO—Albert L. Maisel, '39  
NEW YORK—Daniel C. Baker, Jr., '33  
NORTH CAROLINA—George T. Wood, Jr., '28  
NORTH DAKOTA—Edmund C. Stucke, '10  
OHIO—Lerleen C. Hatch, '28  
OKLAHOMA—Maurice J. Searle, '20  
OREGON—Merle W. Moore, '24

PENNSYLVANIA—Philip J. Morgan, '28  
RHODE ISLAND—George H. Taft, '41  
SOUTH CAROLINA—Hugh S. Black, '17  
SOUTH DAKOTA—Gerrit J. Bloemendaal, '26  
TENNESSEE—Julius J. Douglas, Jr., '21  
TEXAS—Truman N. Morris, '27  
UTAH—Stanley M. Clark, '21  
VERMONT—George J. Ravit, '31  
VIRGINIA—Horace G. Longaker, '15  
WASHINGTON—Ralph J. Schlosser, '48  
WEST VIRGINIA—James G. Ralston, '29  
WISCONSIN—Arch J. Hood, '18  
WYOMING—Eli C. Ridgway, Jr., '33  
U. S. ARMY—  
John W. Kemble, '33, Lt. Col. M.C., U.S.A.  
U. S. NAVY—  
John G. Mc Nerney, '27, Comdr. M.C., U.S.N.  
U. S. PUBLIC HEALTH SERVICE—  
Louis Schwartz, '05  
ALASKA—Conrad E. Albrecht, '32  
HAWAII—George K. F. Tyau, '31  
PUERTO RICO—Cesar Dominguez-Conde, '20  
AFRICA—Alexander J. Orenstein, '05  
CANADA—William A. Dobson, '15  
CHINA—En Shui Tai, '28  
COSTA RICA—Jose M. Jimenez, '22  
REPUBLIC DE PANAMA—Jaime de la Guardia, '20  
INDIA—Amar D. Matta, '31  
MEXICO—Siegfried Figueroa Meinhardt, '10  
SIAM—Pyn Noyes Muangman, '26  
PERU—Rodrigo Franco, '26  
NETHERLANDS WEST INDIES—  
John N. Borbonus, '31  
AUSTRALIA—Frederick C. Turnbull, '12  
VETERANS ADMINISTRATION—  
John E. Davis, Jr., '33

