

# AISR Connections

News from Academic Information Services and Research

Academic Year 2001-2002

## Welcome to Thomas Jefferson University

### NEW LOOK FOR JEFFLINE

In the spring of 2000, Ann Koopman, JEFFLINE Editor, and Tony Frisby, Director of AISR Education Services, met with several focus groups on campus to discuss how they use JEFFLINE and to determine how we could help them access the resources they need most. Several design prototypes were presented during these focus groups. Based on feedback from participants, an online survey was created to gauge preference of a proposed new JEFFLINE navigation or the office metaphor which had been used since 1995. The new design was preferred by a three to one margin, and the new interface was implemented in June.

The redesigned home page highlights new features on JEFFLINE as well as important events on campus. Resource groups and user communities are organized more efficiently in tabs along the top of the screen. We think you will find this new interface to be a better way to get you to our most popular resources quickly.



### TJU RESEARCH PROFILES

Find expertise on campus by searching the TJU Research Profiles through the Community of Science Expertise database. Jefferson researchers who add their profiles receive weekly email funding alerts, as well as individual web pages and automatic downloads in NIH biosketch format.



For more information, go to <http://jeffline.tju.edu/Researchers/profiles/>

### COURSEINFO@JEFFLINE

Course Info is Jefferson's resource for classes which contain online content. Connecting to "My Course Info" allows students access to:

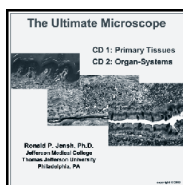
- current course announcements
- staff information
- course documents
- online reserved readings
- links to other sites selected by the course instructor
- communication options via email to the course instructor, other students, or the entire class

Faculty can control which options they want to make available for each of their courses. Unavailable options simply do not appear in the menu. CourseInfo is very easy to learn, and the AISR Education Services staff will assist faculty with creating and managing material for their courses. Contact us at [EdServices@jeffline.tju.edu](mailto:EdServices@jeffline.tju.edu) or call 215-503-2830.

### SOFTWARE

The Education Services Division of AISR works with faculty to develop instructional resources such as websites, online learning experiences, and CD-ROM software. Some of the software developed in the past year includes:

- *Ultimate Microscope* (Dr. Ron Jensh) is a two-CD set which contains over 400 images. Just like real-world microscopes, *Ultimate Microscope* provides the ability to zoom in and out using three different magnifications.



Select the area to view by using the scrollbars or by dragging the viewbox

over the image. Images are organized into two categories: primary tissues and organ systems. Descriptive text for each of the images is included..

- *The Patient Encounter Module II: Infant History and Exam* (Drs. Ruth Gottlieb and Lindsey Lane) provides video and animation to demonstrate proper history-taking and physical exam procedures for an infant.
- *Urinary Cytology* (Dr. Indra Balachandran) is a tutorial and self-assessment program on the microscopic screening of urine samples.



## SCOTT MEMORIAL LIBRARY RESOURCES

*The heart of any university is its library--and TJU is no exception. We are proud that Jefferson's library is frequently cited as one of the east coast's best health sciences libraries. Scott Memorial Library's unique collection is much more than just books and journals!*

### LIBRARY COLLECTIONS

The Library collection includes more than 190,000 bound volumes and 2,000 journal subscriptions; over 600 are available in full-text electronic format for remote access with a JEFFLINE username and password. A collection of popular best-seller books and magazines, music CDs, videotapes, medical education software, and 3D models complements the library's collection.

### Browsing Room Collection

[first floor]

The Browsing Room provides:

- popular books and current magazines
- 12 PCs available 24 hours per day

## LIBRARY HOURS

### Academic Year 2001-2002

Special holiday hours will be posted in the Library

<b>Mon-Thurs</b>	<b>8:00 a.m. - midnight</b>
<b>Friday</b>	<b>8:00 a.m. - 10:00 p.m.</b>
<b>Saturday</b>	<b>9:00 a.m. - 5:00 p.m.</b>
<b>Sunday</b>	<b>10:00 a.m. - midnight</b>

Scott Memorial Library is open to TJU I.D. holders and affiliates 7 days a week, with 24-hour access to the 1st and 4th floors.

### Reserve Materials

[second and third floors]

Materials in high demand and/or those needed for class assignments are kept on reserve at either the Circulation Window or in the Learning Resources Center. Materials circulate for two hours in most instances, and a charge is assessed for overdue items.

### Learning Resources Center

[307 Scott and 311 JAH]

The LRC provides access to:

- anatomical models
- instructional slides and videos
- computer-based learning software
- small-group media rooms

The LRC staff manages the computer classrooms in both 307 Scott and 311 Jefferson Alumni Hall. The lab in 311 JAH is a self-service, 24-hour computer lab. Available software includes:

- word processing and spreadsheet
- Internet web browsers
- email
- course-specific instructional software

One of the best-kept secrets among the students is that also housed within the LRC is a collection of:

- popular music CDs
- audio books
- videotapes

The LRC also plays a vital role in supporting graduate medical education (GME). Services include software programs supporting the residency application and selection processes such as:

- FREIDA
- ERAS
- Web ROLIC

### Circulating Book Collection

[fourth floor] The main book collection, one of the largest in a health science library, is accessible 24 hours per day.

### University Archives and Special Collections

[401 Scott]

The University Archives is responsible for acquiring and preserving:

- important TJU records
- rare books
- photographs
- manuscripts and personal papers
- memorabilia
- other historical materials



Jakob Rueff, 1587  
De conceptu et generatione hominis

From the Special Collections of Scott Memorial Library

The Special Collections include approximately 3,700 books recording the history of health sciences, some are quite rare, dating back to the 15th century. For more information: <http://jeffline.tju.edu/SML/archives/>

Most of the Archives' photographs have been digitized and are available on JEFFLINE through PHDIL (Philadelphia Historical Digital Image Library). For more information: <http://jeffline.tju.edu/archives/phdil/>

## LIBRARY SERVICES & POLICIES

### Information Services

The Information Services librarians can help you find the information you need:

- at the 2nd Floor Reference Desk
- by appointment
- through [Askalibrarian@jefferson.edu](mailto:Askalibrarian@jefferson.edu), the online reference service

Services provided include:

- defining search strategies
- using search software and identifying appropriate resources
- fee-based database searching
- current awareness services
- training and support for personal bibliographic management software, e.g., EndNote and Reference Manager

For more information:

<http://jeffline.tju.edu/SML/reference/>

### JEFFSelects

Scott librarians create and update webliographies of high-quality Internet resources on topics of interest to the Jefferson community.

Topics include:

- Alternative and Complementary Medicine
- Community Health
- Pharmacology and Toxicology
- Health Care Administration and Policy
- AIDS and HIV

### Grants Information Service

The Grants Information Service of the Scott Memorial Library provides support for TJU faculty, staff and students engaged in grant-seeking activities. For more information about grants services, visit JEFFLINE at:

<http://jeffline.tju.edu/Researchers/grants/>

### Photocopying and Laser Printing

VendaCards are required for all Library photocopy and laser printing machines.

- VendaCards - 50 cents; purchase at Circulation Window on 2nd floor
- photocopies - 10 cents (25 cents for non-TJU/TJUH users)
- laser printing - 10 cents per page

### Borrowing Privileges

With a valid TJU/TJUH ID, you may register at the Circulation Window on the second floor to borrow circulating items.

### Interlibrary Loan

ILL provides books and journal articles not owned by Scott Memorial Library:

- \$5.00 for regular delivery (7-10 days)
- \$10.00 for rush requests (48 hours--only for patient care emergencies)
- TJU students entitled to 10 requests per academic year without charge

*United States copyright law governs the making of photocopies and other restrictions of copyrighted material.*

### JeffDocs

The Library provides a photocopy service for articles found in our journal collection. For a fee of \$5.00, you may request a document be copied and mailed or held at the Circulation Window for pick up.

### Holds & Renewals

- holds may be placed at the Circulation Window for items currently on loan by another patron
- journals may not be renewed
- books may be renewed up to two times if not on hold for another patron
- renew books in person or on JEFFLINE at:  
<http://jeffline.tju.edu/SML/services/renewal.html>

### Overdue Items

Overdue notices are sent as a courtesy to remind users to return borrowed items. Failure to receive a notice does not exempt the borrower from paying overdue fines. Overdue fines accrue at:

- 25 cents a day for books
- \$1.00 a day for Reserves, bound journals, LRC items and audiotapes

### Security

University policy requires all students, faculty, and staff to wear their TJU/TJUH identification badges at all times while on University property.

## JEFFLINE CYBER CAFE

Your favorite full-text online books and journals, delivered hot and fresh to your computer! No waiting, no reservations required!

### Combination Platters

#### • Academic Press IDEAL

A selection of over 100 biomedical and life sciences journals, as well as titles in many other disciplines.

#### • Elsevier ScienceDirect

A variety of titles, including more than 100 biomedical and life sciences journals. Search for full-text articles of titles held by the Scott Library, or see tables of contents and abstracts for hundreds more titles.

#### • Journals@OVID

A searchable database of over 300 journals, with full text links for approximately 48 titles held by the Scott Library.

#### • Kluwer Academic Publishers

Something to please everyone! Here you'll find the full text of approximately 600 journals, covering everything from medicine to Space Debris (yes, that really is one of the titles!).

### A La Carte

- AIDS Research & Human Retroviruses
- Clinical Neurophysiology
- Journal of Occupational & Environmental Medicine

### Children's Menu

- Archives of Pediatrics
- Journal of Adolescence
- Pediatrics in Review

### Healthy Alternatives

- American Journal of Cardiology
- Circulation
- Clinics in Sports Medicine
- Nutrition

### Teachers' Specials

- Academic Emergency Medicine
- Health Education Research
- Nurse Education Today

Cyber Café

<http://jeffline.tju.edu/cafe>

## IMPORTANT CAMPUS CONTACT INFO

- **I need help with my Email:**  
Technical Assistance Center  
215.503.7975  
<http://jeffline.tju.edu/SML/helpaids/faq/email.html>
- **I have a reference question.**
- **I forgot my JEFFLINE password.**  
Reference Desk  
215.503.8150  
[Askalibrarian@jefferson.edu](mailto:Askalibrarian@jefferson.edu)  
<http://jeffline.tju.edu/SML/reference/>
- **How do I renew a book?**
- **Where do I get a copy card?**  
Circulation Department  
215.503.6995  
<http://jeffline.tju.edu/SML/services/renewal.html>
- **How late is the LRC open?**
- **I can't connect to \_\_\_\_\_.**  
Learning Resources Center  
215.503.8407  
[LRC@jeffline.tju.edu](mailto:LRC@jeffline.tju.edu)  
<http://jeffline.tju.edu/SML/about/hours.html>
- **How does Interlibrary Loan work?**  
Interlibrary Loan  
215.503.6773  
<http://jeffline.tju.edu/SML/services/ILL/>
- **May I suggest a book or journal for the Scott Library collection?**  
Collection Management  
215.503.2829  
[http://jeffline.tju.edu/SML/services/purchase\\_rec.html](http://jeffline.tju.edu/SML/services/purchase_rec.html)
- **What is in the University Archives?**  
University Archives  
215.503.8097  
[Michael.Angelo@mail.tju.edu](mailto:Michael.Angelo@mail.tju.edu)  
<http://jeffline.tju.edu/SML/archives/>
- **I want CourseInfo for my class.**  
[CourseInfo@JEFFLINE](mailto:CourseInfo@JEFFLINE)  
215.503.2830  
[EdServices@jeffline.tju.edu](mailto:EdServices@jeffline.tju.edu)  
<http://course.lib.tju.edu/bin/mylogin.pl>
- **I want to learn about \_\_\_\_\_.**  
Education Services  
215.503.2830  
[EdServices@jeffline.tju.edu](mailto:EdServices@jeffline.tju.edu)  
<http://jeffline.tju.edu/Education/edservices/>
- **I need slides, posters, video.**
- **I need a slide/overhead projector for a classroom.**  
Medical Media Services  
215.503.7841  
[MMS@jeffline.tju.edu](mailto:MMS@jeffline.tju.edu)  
<http://jeffline.tju.edu/MMS/>

## EDUCATION SERVICES

Responsible for developing instructional materials for live, CD-ROM, and web-based delivery, the Education Services division supports the use of educational technology at Thomas Jefferson University. Services include:

- traditional classroom instruction related to information science and lifelong learning
- instruction on literature research, including evidence-based medicine
- effective use of bibliographic management tools
- faculty development of instructional technologies
- software development to support Jefferson's educational mission
- website development for Jefferson courses and the University Educational Objectives
- development of distance learning courses

## JEFFLINE FORUM

AISR is involved in a variety of technology programs on campus. New journals and textbooks come online, new databases are included or existing ones undergo significant changes, and new technologies become available for use in courses. How can you stay up-to-date with what's happening with knowledge resources and instructional technology at Jefferson? By reading AISR's "e-zine," the JEFFLINE Forum. Access the latest issue and subscribe at: <http://jeffline.tju.edu/Education/forum/>

## MEDICAL MEDIA SERVICES

As Jefferson's only full-service biomedical communication facility, Medical Media Services produces:



Medical illustrations, slides, graphics, full-color banners and poster presentations



Digital video production services for videotape and digital presentations



Digital and traditional photography, in-house slide processing



Digital video conferencing and traditional audiovisual equipment support

For more information:

<http://jeffline.tju.edu/MMS>

## EDITORIAL STAFF

Edward W. Tawyea, MSLS  
Director, AISR and University Librarian

*Editor*

Anthony J. Frisby, Ph.D.  
Director, AISR Education Services

*Managing Editor*

Gail Leone  
AISR Education Services

*Newsletter design and layout by  
AISR Education Services*



Academic Information Services and Research  
Scott Memorial Library  
1020 Walnut Street  
Philadelphia, PA 19107-5587  
215.503.AISR