

Effects of Exercise Training on Cardiorespiratory Fitness and Biomarkers of Cardiometabolic Health: A Systematic Review and Meta-Analysis of Randomized Controlled Trials

Xiaochen Lin, MS; Xi Zhang, PhD; Jianjun Guo, MD; Christian K. Roberts, PhD; Steve McKenzie, PhD; Wen-Chih Wu, MD; Simin Liu, MD, ScD; Yiqing Song, MD, ScD

Background—Guidelines recommend exercise for cardiovascular health, although evidence from trials linking exercise to cardiovascular health through intermediate biomarkers remains inconsistent. We performed a meta-analysis of randomized controlled trials to quantify the impact of exercise on cardiorespiratory fitness and a variety of conventional and novel cardiometabolic biomarkers in adults without cardiovascular disease.

Methods and Results—Two researchers selected 160 randomized controlled trials (7487 participants) based on literature searches of Medline, Embase, and Cochrane Central (January 1965 to March 2014). Data were extracted using a standardized protocol. A random-effects meta-analysis and systematic review was conducted to evaluate the effects of exercise interventions on cardiorespiratory fitness and circulating biomarkers. Exercise significantly raised absolute and relative cardiorespiratory fitness. Lipid profiles were improved in exercise groups, with lower levels of triglycerides and higher levels of high-density lipoprotein cholesterol and apolipoprotein A1. Lower levels of fasting insulin, homeostatic model assessment–insulin resistance, and glycosylated hemoglobin A1c were found in exercise groups. Compared with controls, exercise groups had higher levels of interleukin-18 and lower levels of leptin, fibrinogen, and angiotensin II. In addition, we found that the exercise effects were modified by age, sex, and health status such that people aged <50 years, men, and people with type 2 diabetes, hypertension, dyslipidemia, or metabolic syndrome appeared to benefit more.

Conclusions—This meta-analysis showed that exercise significantly improved cardiorespiratory fitness and some cardiometabolic biomarkers. The effects of exercise were modified by age, sex, and health status. Findings from this study have significant implications for future design of targeted lifestyle interventions. (*J Am Heart Assoc.* 2015;4:e002014 doi: 10.1161/JAHA.115.002014)

Key Words: biomarker • cardiometabolic health • cardiovascular disease prevention • exercise training

Cardiovascular disease (CVD) remains a leading cause of morbidity and mortality affecting ≈84 million people in the United States.^{1–3} Current guidelines recommend exercise for both primary and secondary prevention of CVD.^{4–6} Observational studies have associated exercise with lower CVD risk in populations free of preexisting CVD.^{7–9} Substantial evidence

from secondary prevention studies also confirms better survival and reduced CVD recurrence after exercise interventions.^{10,11} Because of apparent ethical and feasibility issues, however, no long-term randomized controlled trials (RCTs) have directly investigated the benefits and risks of exercise training in relation to CVD incidence.¹² Consequently, exercise

From the Department of Epidemiology, School of Public Health (X.L., W.-C.W., S.L.) and Division of Cardiology and Veterans Affairs Medical Center, Department of Medicine, Alpert Medical School (W.-C.W., S.L.), Brown University, Providence, RI; Department of Epidemiology, Richard M. Fairbanks School of Public Health, Indiana University, Indianapolis, IN (X.Z., Y.S.); Center for the Youth Sport Research and Development, China Institute of Sport Science, Beijing, China (J.G.); Geriatrics, Research, Education and Clinical Centers, VA Greater Los Angeles Healthcare System, Los Angeles, CA (C.K.R.); Department of Kinesiology, Center for Physical Activity in Wellness and Prevention, Indiana University-Purdue University at Indianapolis, IN (S.M.); Division of Endocrinology, Department of Medicine, Rhode Island Hospital, Providence, RI (S.L.).

Correspondence to: Simin Liu, MD, ScD, Department of Epidemiology and Medicine, Brown University, 121 South Main St, Providence, RI 02903. E-mail: Simin_liu@brown.edu and Yiqing Song, MD, ScD, Department of Epidemiology, Indiana University Richard M. Fairbanks School of Public Health, 714 North Senate Avenue, Indianapolis, IN 46202. E-mail: yiqsong@iu.edu

Received April 2, 2015; accepted April 30, 2015.

© 2015 The Authors. Published on behalf of the American Heart Association, Inc., by Wiley Blackwell. This is an open access article under the terms of the Creative Commons Attribution-NonCommercial License, which permits use, distribution and reproduction in any medium, provided the original work is properly cited and is not used for commercial purposes.

interventions among healthy populations have focused on intermediate CVD biomarkers. Changes in circulating CVD biomarkers and cardiorespiratory fitness (CRF) are reasonable indicators for the favorable effects of exercise training on cardiovascular health.

An important component of health-related fitness, CRF refers to the capacity of respiratory and cardiovascular systems to provide muscles with oxygen during sustained and/or intense exercise. Available evidence has shown that CRF can significantly improve the predictive ability of both short- and long-term CVD risk when added to traditional risk factors.¹³ In addition to serving as a diagnostic and prognostic health indicator in clinical settings, CRF has been used as an indicator of habitual exercise.^{14,15}

Traditional CVD biomarkers, such as non-high-density lipoprotein cholesterol and high-sensitivity C-reactive protein, may also have the potential to be used in CVD risk prediction.^{16–19} Although most previous studies examining the relationship between exercise and circulating biomarkers focus on commonly measured CVD biomarkers, an increasing number of studies are evaluating novel biomarkers.^{20,21} Evidence has implicated, for example, relevant biomarkers in insulin resistance and inflammation that contribute to CVD development.^{22–26}

Nevertheless, much remains uncertain concerning the effects of exercise on both traditional and novel CVD biomarkers for targeted interventions and clinical evaluations.^{20,21,27} The primary objective of this meta-analysis was to assess the effects of exercise training on CRF and a variety of both traditional and novel circulating CVD biomarkers. Furthermore, we aimed to investigate the sources of heterogeneity, especially by potential effect modifiers such as age, sex, obesity, lifestyle, preexisting conditions (type 2 diabetes, hypertension, hyperlipidemia, or metabolic syndrome), and intervention duration and intensity.

Methods

Data Sources and Searches

We developed and followed a standardized protocol to do this meta-analysis in accordance with the Preferred Reporting Items for Systematic Reviews and Meta-Analyses (PRISMA) guidelines.²⁸ Two investigators (X.L., X.Z.) independently conducted literature searches of Medline, Embase, and the Cochrane Central Register of Controlled Trials published from January 1965 (index date) to March 2014, using keywords and Medical Subject Headings (Table 1). All relevant studies and review articles (including meta-analysis) and the reference lists of the identified articles were checked manually. Any disagreements between 2 investigators were resolved by consensus. Institutional review board approval is not applicable because the

Table 1. Search Strategy for Medline

1.	exp Exercise/
2.	physical activity.ab.
3.	aerobic*.ab.
4.	or/1 to 3
5.	exp Biological Markers/
6.	Exercise Tolerance/
7.	Exercise Test/
8.	exp Oxygen Consumption/
9.	Physical Fitness/
10.	or/5 to 9
11.	randomized controlled trial.pt.
12.	controlled clinical trial.pt.
13.	Randomized Controlled Trials/
14.	Random Allocation/
15.	Intervention Studies/
16.	or/11 to 15
17.	4 and 10
18.	17 and 16
19.	limit 18 to English language
20.	limit 19 to humans

current study is a systematic review and meta-analysis, which is not considered research involving human subjects.

Study Selection

Articles were included (1) if the study was an RCT that assigned at least 1 group of participants to exercise training and 1 group to control and (2) if CRF (absolute and relative maximal oxygen uptake) or circulating CVD biomarkers of lipid and lipoprotein metabolism, glucose intolerance and insulin resistance, systemic inflammation, or hemostasis were measured at baseline and at the end of the trial.

All abstracts about RCTs reporting the effect of exercise training on CVD-related biomarkers or CRF were included for screening. We excluded studies (1) if the study design was not a RCT; (2) if the exercise intervention was acute (≤ 1 week), because we are interested in the effects of exercise interventions of moderate to long duration; (3) if interventions were based on education or counseling rather than a structured exercise training assignment; (4) if maximal oxygen consumption, or VO_{2max} , was indirectly calculated through heart rate or fixed time testing and no other biomarkers of interest to this study were reported; (5) if levels of circulating biomarkers were not directly measured; (6) if values of outcome measures at the end of trials were not reported; (7) if participants had severe chronic diseases (preexisting CVD,

liver or kidney diseases, or cancers), any other conditions that could potentially compromise participants' capacity to exercise (disability, frailty, declined activities of daily living, or wheelchair dependency), or any mental conditions (depression, anxiety, schizophrenia, bipolar disorder, Parkinson's disease, or Alzheimer's disease); (8) if participants were identified as trained professionals, athletes, or soldiers; (9) if participants were infants, children, or adolescents; or (10) if participants were pregnant, postpartum, nursing, had recent surgery, or were undergoing rehabilitation exercise. If multiple articles were published based on the same trial, data were retrieved as 1 independent trial. If there were duplicate results from the same trial, the most updated and comprehensive ones were extracted.

Data Extraction and Quality Assessment

In total, 6135 articles were retrieved from the literature search. We excluded 5796 articles after abstract review and 170 after full-text examination. Data extraction was conducted independently by 2 investigators (X.L., X.Z.), and discrepancies were resolved through consensus. The following information was extracted from all eligible studies: general information (first author's name, article title, and country of origin), study characteristics (study design, eligibility criteria, randomization, blinding, cointervention, dropout rate, and reason for dropping out), participant characteristics (age, sex, ethnicity, body mass index, life style, health status, and number of participants in each group), intervention and setting (exercise type, duration, intensity, and supervision), and outcome measures (definition of outcomes, statistical techniques, pre- and postintervention means, standard deviation, sample size of each arm, and adverse events). Maximal oxygen uptake VO_{2max} was measured directly and determined based on the highest VO_2 obtained prior to volitional fatigue. In this meta-analysis, we focused on biomarkers in blood samples, including plasma, serum, and whole blood. All samples for fasting glucose and insulin measurement in the studies were collected after >10 hours of fasting.

Data Synthesis and Analysis

Methodological quality was assessed by 2 investigators (X.L., X.Z.) using the Cochrane Collaboration's tool for assessing risk of bias.²⁹ This included random sequence generation, allocation concealment, blinding of participants and personnel, blinding of outcome assessment, incomplete outcome data, selective reporting, and other sources of bias. For each trial, the risk of bias was reported as *low risk*, *unclear risk*, or *high risk*. Disagreement was resolved by discussion. All eligible comparisons from each trial were extracted separately according to exercise intensity. The criteria for classifying

Table 2. Criteria Used for Exercise Intensity Classification

	Moderate	Vigorous
Maximum heart rate, beats/min	<140	≥140
Maximum heart rate, %	<75	≥75
Speed of running, m/s	<6.8	≥6.8
Metabolic equivalents	Women: <6	Women: ≥6
	Men: <8	Men: ≥8
Oxygen uptake (% of VO_{2max})	<70	≥70
Relative metabolic rate	<8	≥8

exercise interventions as *moderate exercise* or *vigorous exercise* are summarized in Table 2. If the intensity measures were not reported in individual studies, maximum heart rate, maximum heart rate percentage, speed of running, metabolic equivalent, oxygen uptake, or relative metabolic rate were used to classify exercise intensity. To maintain independence, the most vigorous intervention and the control group in each trial were included in the primary analysis if multiple training groups of different intensities were compared with a single control group. Sensitivity analyses were performed by conducting separate analyses of all eligible comparisons for moderate and vigorous exercise interventions, respectively.

Mean levels and standard deviations of CRF and CVD biomarkers after the exercise interventions from individual trials were used to calculate weighted mean differences (WMDs) and 95% CIs using DerSimonian and Laird random-effects models.³⁰ Between-study heterogeneity was examined using Q statistics and I^2 statistics.^{31,32} $I^2 \approx 25\%$, 50% , and 75% is suggestive, respectively, of low, medium, and high heterogeneity. Egger's tests were used to formally test publication bias.³³ If there was any evidence of publication bias, the trim and fill method was used to evaluate the impact of publication bias.³⁴

All eligible trials were analyzed in subgroup analyses conducted within the strata of the predetermined potential modifiers, including age (mean or median <50 versus ≥50 years), sex (women versus men), body mass index (obese versus nonobese), lifestyle (active versus sedentary), health status (having at least 1 of the following comorbidities: type 2 diabetes, hypertension, hyperlipidemia, and metabolic syndrome versus none), and trial duration (≥16 versus <16 weeks). Obesity was defined as body mass index ≥30 kg/m². Active lifestyle was defined according to the report of individual trials. Health status was confirmed by clinical diagnosis or reported medication use. Metaregressions were performed to evaluate the overall impact of potential modifiers.

Two-sided $P \leq 0.05$ was used as the significance level except for the Q statistic and the Egger's tests ($P = 0.10$).³⁵ All statistical analyses were performed with Stata statistical software version 12 (Stata Corp).

Results

Figure 1 shows the number of trials included in the analysis for each outcome. A total of 7487 participants aged between 18 and 90 years, from 169 articles based on 160 RCTs, were included in the meta-analysis. Characteristics of

eligible studies are summarized in Table 3. Among all participants, 4276 (57.1%) were women; 3211 (42.9%) were men; 5845 (78.1%) were free of type 2 diabetes, hypertension, hyperlipidemia, or metabolic syndrome; and 1640 (21.9%) had at least 1 of those conditions. The median duration of trials was 12 weeks (range: 2 weeks to 2 years).

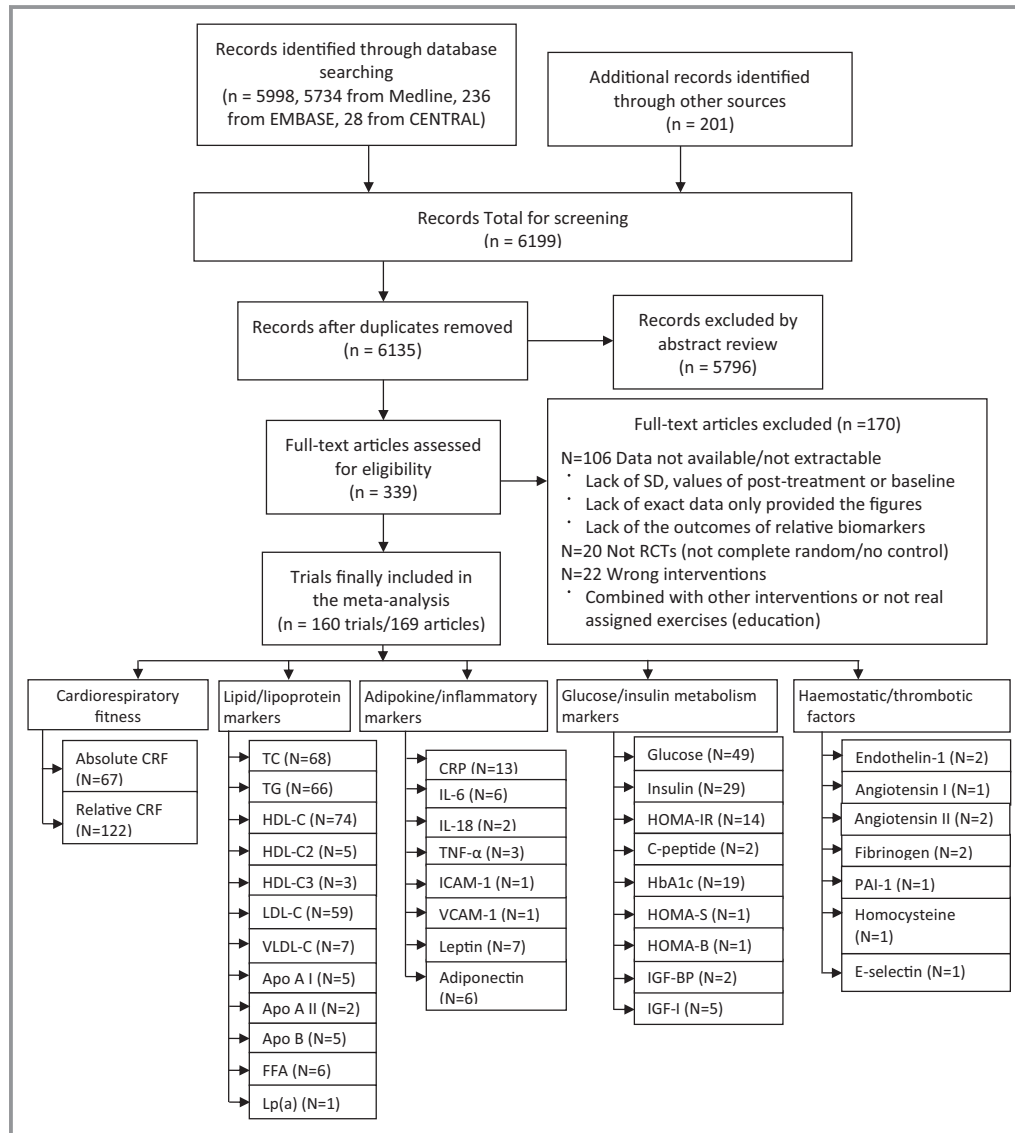


Figure 1. Summary of study selection process. In total, 6135 articles were retrieved from the literature search that evaluated the effect of exercise interventions on CRF or cardiometabolic biomarkers. We excluded 5796 articles after abstract review and 170 after full text examination. After exclusion, 160 RCTs reported in 169 articles were included in the meta-analysis. Apo AI indicates apolipoprotein A1; Apo AII, apolipoprotein A2; Apo B, apolipoprotein B; CRF, cardiorespiratory fitness; CRP, C-reactive protein; FFA, free fatty acid; HbA1c, glycosylated hemoglobin A1c; HDL-C, high-density lipoprotein cholesterol; HOME-B, homeostatic model assessment-beta cell function; HOMA-IR, homeostatic model assessment–insulin resistance; HOMA-S, homeostatic model assessment–insulin sensitivity; ICAM-1, intercellular adhesion molecule 1; IGF-1, insulin-like growth factor 1; IGF-BP, insulin-like growth factor binding protein; IL, interleukin; LDL-C, low-density lipoprotein cholesterol; Lp(a), lipoprotein(a); PAI-1, plasminogen activator inhibitor-1; RCTs, randomized controlled trials; TC, total cholesterol; TG, triglycerides; TNF- α , tumor necrosis factor α ; VCAM-1, vascular cell adhesion molecule 1; VLDL-C, very low-density lipoprotein cholesterol.

Table 3. Characteristics of the Trials Included in the Meta-Analysis

Study	Age, y	Sex	BMI, kg/m ²	Duration, wk	Activity/Medical Condition	Exercise Type, Intensity and Cointerventions	N _r /N _c	Marker
Abderahman, 2013 ³⁶	Mean: 20.6	Male only	Mean: 22.8	7	NR/Health	Running/Vigorous/No	9/6	Absolute CRF, Relative CRF
Ahmaidi, 1998 ³⁷	53 to 74	NR	NR	12	Sedentary/Health	Walking/Jogging/Vigorous/No	11/11	Absolute CRF, Relative CRF
Aldred, 1995 ³⁸	41 to 55	Female only	T: 24.8±1.0 C: 26.8±0.8	12	Sedentary/Health	Walking/Moderate/No	11/11	TC, HDL-C2 LDL-C, FFA
Ashutosh, 1997 ³⁹	20 to 60	Female only	Overweight or obesity	46	NR/Health	Aerobic exercise/NR/Dietary intervention	9/6	Absolute CRF, Relative CRF
Asikainen, 2002 ⁴⁰	48 to 63	Female only	Mean: 26.2	24	Sedentary/Health	Walking/Vigorous/No	20/38	Relative CRF
Baker, 1986 ⁴¹	Mean: 58.2	Male only	NR	20	Sedentary/Health	Aerobic training/Vigorous/No	20/14	Absolute CRF, Relative CRF, TC, HDL-C, LDL-C, VLDL-C
Balducci, 2010, 2012 ⁴²	C: 58.8±8.6 T: 58.8±8.5	NR	C: 31.9±4.6 T: 31.2±4.6	52	Sedentary/Diabetes mellitus	Aerobic and resistance training/Moderate/No	288/275	Relative CRF, TC, TG, HDL-C, LDL-C, CRP, Fasting glucose, Insulin, HOMA-IR HbA1c
Beavers, 2010 ⁴³	60 to 79	Female: 67%	>28.0	78	Active/Health	Walking and interactive, health education in control	97/93	Leptin
Bell, 2010 ⁴⁴	Male: 49±11 Female: 50±9	NR	Mean: 30	24	Sedentary/Health	Walking/Moderate/No	43/45	Absolute CRF, Relative CRF, TC, TG, HDL-C, LDL-C, Fasting glucose
Bermon, 1999 ⁴⁵	67 to 80	Male: 16	T: 24.9±0.5 C: 25.9±0.6	8	Sedentary/Health	Strength training/Vigorous/No	16/16	IGF-1, IGF-BP
Biddle, 2011 ⁴⁶	Mean: 34.8±12.6	Female 13	Mean: 36.3±6.7	4	Sedentary/Health	Small-sided games-based exercise/NR/No	9/7	Absolute CRF, Relative CRF, TC, TG, HDL-C, LDL-C, CRP, Fasting glucose, HbA1c
Blumenthal, 1991 ⁴⁷	60 to 83	Female: 50%	NR	60	Sedentary/Health	Aerobic exercise or yoga/Vigorous/No	15/15	Absolute CRF, Relative CRF
Blumenthal, 1991 ⁴⁸	29 to 59	Male: 62%	Mean: 26.9	16	NR/untreated mild hypertension	Aerobic exercise training/Jogging	39/22	Absolute CRF, Relative CRF
Boardley, 2007 ⁴⁹	≥65	Male: 27%	NR	16	Sedentary/Health	Resistance training and aerobic walking/Moderate/No	33/35	TC, TG, HDL-C, LDL-C
Bobbeuf, 2011 ⁵⁰	59 to 73	Female: 52.6%	Mean: 26.2±2.6	24	Sedentary/Health	Resistance training/Vigorous/Vitamins C/E supplementation	17/12	TC, TG, HDL-C, LDL-C
Boreham, 2000 ⁵¹	18 to 22	Female only	NR	7	Sedentary/Health	Stair climbing/Moderate/No	12/10	TC, HDL-C

Continued

Table 3. Continued

Study	Age, y	Sex	BMI, kg/m ²	Duration, wk	Activity/Medical Condition	Exercise Type, Intensity and Cointerventions	N _r /N _c	Marker
Boudou, 2003 ⁵²	Mean: 45.4±7.2	Male only	Mean: 29.6±4.6	8	NR/Diabetes mellitus	Endurance exercise/Vigorous/No	8/8	Adiponectin, Leptin, Insulin
Bourque, 1997 ⁵³	23 to 43	Female only	Mean: 23.1±4.9	12	Sedentary/Health	Endurance exercise/Vigorous/No	6/7	Relative CRF
Braith, 1994 ⁵⁴	60 to 79	Female: 54.5%	NR	24	Sedentary/Health	Walking/Vigorous/No	14/11	Relative CRF
Broeder, 1992 ⁵⁵	18 to 35	Male only	Mean: 25.3	12	NP/Health	Walk or jog/Vigorous/No	15/19	Relative CRF
Broman, 2006 ⁵⁶	69±4	Female only	NR	8	NR/Health	In deep water running/Walking/Vigorous/No	15/9	Absolute CRF, Relative CRF
Burr, 2011 ⁵⁷	Mean: 26	NR	NR	6	Sedentary/Health	Vehicle riding/Vigorous/No	34/12	Relative CRF, Fasting glucose
Camargo, 2006 ⁵⁸	Mean: 29	Male only	Mean: 27.3	12	Sedentary/Health	Aerobic training/Moderate/No	7/7	Relative CRF
Campbell, 2007 ⁵⁹	40 to 75	Female only	29.9 to 28.7	52	Sedentary/Health	Aerobic Exercise/Moderate/No	17/15	Absolute CRF, Relative CRF, CRP
Canuto, 2012 ⁶⁰	18 to 64	Female only	Mean: 34.8	12	NR/Health	Resistance training/Moderate/Education	29/30	TC, TG, HDL-C, LDL-C, CRP, Fasting glucose, Insulin, HbA1c
Carroll, 2012 ⁶¹	T: 39.3±7.8 C: 41.0±7.7	Female only	T: 39.9±7.4 C: 41.0±7.7	12	Sedentary/Health	Treadmill walking/Moderate/Lifestyle intervention	22/22	Absolute CRF, Relative CRF
Chan, 2013 ⁶²	Mean: 54±11	Female only	Mean: 31±7	10	Sedentary/Hypertension	Treadmill walking/Vigorous/Education	10/13	Relative CRF,
Chandler, 1996 ⁶³	60 to 79	Female: 38.6%	NR	24	NR/Health	Endurance training/Moderate/No	16/11	Relative CRF, PAI-1
Cho, 2011 ⁶⁴	34 to 60	Female only	Mean: 25.6	12	Sedentary/Health	Walking/Moderate/No	13/10	Relative CRF, TG, HDL-C, FFA, Fasting glucose, Insulin, HOMA-IR
Christiansen, 2010 ⁶⁵	18 to 45	Female: 38	30 to 40	12	Sedentary/Health	Aerobic exercise/Vigorous/Dietary intervention	21/19	Absolute CRF, TC, TG, HDL-C, FFA, IL-6, IL-18, Adiponectin, Fasting glucose, Insulin, HOMA-IR
Church, 2007 ⁶⁶	45 to 75	Female only	25 to 43	24	Sedentary/Health	Aerobic exercise/Moderate/No	103/102	Absolute CRF, relative CRF, TG, HDL-C, LDL-C, Fasting glucose
Ciolac, 2011 ⁶⁷	20 to 30	Female only	Mean: 23.78	16	Sedentary/Health	Endurance exercise/Vigorous/No	11/12	Relative CRF, TC, TG, HDL-C, LDL-C, Fasting glucose, Insulin, HOMA-IR
Coker, 2009 ⁶⁸	65 to 90	Female: 50%	26 to 37	12	NR/Health	Cycle ergometer/Moderate/No	6/6	Absolute CRF

Continued

Table 3. Continued

Study	Age, y	Sex	BMI, kg/m ²	Duration, wk	Activity/Medical Condition	Exercise Type, Intensity and Cointerventions	N _r /N _c	Marker
Cortez-Cooper, 2008 ⁶⁹	40 to 80	Female: 73.8%	<30	13	Sedentary/Health	Aerobic exercise strength training vs stretching/Moderate/No	12/12	Relative CRF, TC, TG, HDL-C, LDL-C, Endothelin-1, Fasting glucose
Cox, 1993 ⁷⁰	20 to 45	Male only	Mean: 26.3 (25.7 to 26.9)	4	Sedentary/Health	Not report/Vigorous/Drink low-alcohol beer or continue their normal drinking habits	19/16	TC, TG, HDL-C, HDL-C2, HDL-C3, LDL-C, Apo AI, Apo AII, Apo B
Cox, 2003 ⁷¹	Mean: 42.4±5.0	Male only	Overweight or obesity	16	Sedentary/Hypertension	NR/Moderate & vigorous/Dietary intervention and usual dietary	13/17	Absolute CRF
Dalleck, 2009 ⁷²	45 to 75 year	Female only	Normal	12	Sedentary/Health	NR/Moderate/No	8/10	Absolute CRF, Relative CRF, TC, TG, HDL-C, LDL-C, Fasting glucose
De Vito, 1999 ⁷³	60 to 70	Female only	NR	12	Sedentary/Health	Walking/Moderate/No	11/9	Absolute CRF, Relative CRF
Dimeo, 2012 ⁷⁴	42 to 78	Female: 58%	Mean: 29.4	12	NR/Hyperlipidemia	Walking on a treadmill/No	22/25	Relative CRF
Dipietro, 2006 ⁷⁵	62 to 84	Female only	Mean: 27.3	36	Sedentary/Health	Aerobic training/Moderate/No	9/7	Relative CRF, FFA, Fasting glucose, Insulin
Duncan, 1991 ⁷⁶	20 to 40	Female only	NR	24	Sedentary/Health	Walk/Moderate/No	12/13	Relative CRF, TC, TG, HDL-C, LDL-C
Duscha, 2005 ⁷⁷	40 to 65	NR	25 to 35	36	NR/Hyperlipidemia	Walking/Moderate/No	25/37	Absolute CRF, Relative CRF
Eguchi, 2012 ⁷⁸	20 to 65	Female only	Mean: 25.1±3.9	12	NR/Health	Endurance training using bicycle ergometers/Moderate/No	8/10	Absolute CRF, Relative CRF, TC, TG, HDL-C, LDL-C, Fasting glucose, HbA1c
Fatouros, 2005 ⁷⁹	65 to 78	Male only	28.7 to 30.2	24	Sedentary/Health	Resistance exercises/Moderate/No	12/10	Relative CRF, Adiponectin, Leptin, Fasting glucose, HOMA-IR
Finucane, 2010 ⁸⁰	67.4 to 76.3	Female: 44%	Mean: 27.2	12	NR/Health	Cycle ergometer/Moderate/No	48/48	TC, TG, HDL-C, LDL-C, Fasting glucose, HbA1c
Friedenreich, 2011 ⁸¹	50 to 74	Female only	22 to 40	52	Sedentary/Health	Aerobic exercise/Vigorous/No	154/154	Adiponectin, Leptin, Fasting glucose, Insulin, HOMA-IR, IGF-1, IGF-BP
Garber, 1992 ⁸²	24 to 50	Female: 75%	NR	8	Sedentary/Health	Walk-jog/Moderate/No	13/9	Relative CRF
Georgiades, 2000 ⁸³	≥29	Female: 44%	25 to 37	24	Sedentary/Hypertension	Aerobic exercise/Vigorous/No	36/19	Relative CRF
Gormley, 2008 ⁸⁴	18 to 31	Female: 65.5%	Mean: 24.3	6	Sedentary/Health	Aerobic/Moderate/No	14/13	Relative CRF

Continued

Table 3. Continued

Study	Age, y	Sex	BMI, kg/m ²	Duration, wk	Activity/Medical Condition	Exercise Type, Intensity and Cointerventions	N _r /N _c	Marker
Gram, 2010 ⁸⁵	25 to 80	Female: 45.6%	NR	52	NR/Diabetes mellitus	Strength training and aerobic exercise/Moderate/No	21/20	Absolute CRF, TC, HDL-C, LDL-C, HbA1c
Grandjean, 1996 ⁸⁶	NR	Female only	NR	24	Sedentary/Health	Walking and jog and cycling/Vigorous/No	20/17	Absolute CRF, TC, TG, HDL-C, LDL-C, VLDL-C
Gray, 2009 ⁸⁷	18 to 65	Female: 77%	Mean: 28.6	12	Sedentary/Health	Pedometer-based walking/Moderate/No	24/24	CRP, IL-6, TNF- α , Fasting glucose, Insulin, HOMA-IR
Guadalupe-Grau, 2009 ⁸⁸	Mean: 23.9 \pm 2.4	Female: 34.8%	C: 24.0 \pm 3.6 T: 22.8 \pm 2.0	9	Active/Health	Strength combined with plyometric jumps training/Vigorous/No	8/15	Leptin
Hagan, 1986 ⁸⁹	Mean: 36.6	Female: 50%	Normal	12	Sedentary/Health	Aerobic training/Moderate/Dietary training	12/12	Absolute CRF, Relative CRF, TC, TG, HDL-C, LDL-C, VLDL-C
Hass, 2001 ⁹⁰	35 to 55	Female: 50%	NR	12	Sedentary/Health	NR/Moderate/No	17/9	Absolute CRF, Relative CRF
Hendrickson, 2010 ⁹¹	18 to 26	Female only	NR	12	Active/Health	Aerobic endurance and strength training/Vigorous/No	13/10	Relative CRF
Heydari, 2013 ⁹²	Mean: 24.9 \pm 4.3	Male only	Mean: 28.7 \pm 3.1	12	Sedentary/Health	High-intensity intermittent exercise/Vigorous/No	20/18	Absolute CRF, Relative CRF
Heydari, 2013 ⁹²	Mean: 24.9 \pm 4.3	Male only	Mean: 28.7	12	Active/Health	High-intensity intermittent exercise/Vigorous/No	25/21	Absolute CRF, Relative CRF
Hilberg, 2013 ⁹³	T: 49 \pm 6 C: 48 \pm 6	Male only	NR	12	NR/Health	NR/Vigorous/No	22/22	Relative CRF
Hiruntrakul, 2010 ⁹⁴	18 to 25	Male only	C: 21.35 \pm 3.54 T: 20.99 \pm 3.35	12	Sedentary/Health	Aerobic exercise/Moderate/No	19/18	Relative CRF, HDL-C
Ho, 2012 ⁹⁵	40 to 66	Female: 83.5%	25 to 40	12	Sedentary/Health	Aerobic resistance training/Moderate/No	15/16	Relative CRF, TC, TG, HDL-C, LDL-C, Fasting glucose, Insulin
Hu, 2009 ⁹⁶	20 to 45	Male only	NR	10	Sedentary/Health	Progressive strength training/Moderate/No	48/21	Absolute CRF, Relative CRF,
Huttunen, 1979 ⁹⁷	40 to 45	Male only	NR	16	Sedentary/Health	Walking, jogging, Swimming, Skiing, or Cycling/Moderate/No	44/46	Relative CRF, HDL-C, Apo AI, Apo AII
Tsuji, 2000 ⁹⁸	60 to 81	Female: 53%	NR	25	Active/Health	Endurance session with a bicycle ergometer, and a resistance exercise training session using rubber films/Moderate/Education	31/33	Relative CRF

Continued

Table 3. Continued

Study	Age, y	Sex	BMI, kg/m ²	Duration, wk	Activity/Medical Condition	Exercise Type, Intensity and Cointerventions	N _r /N _c	Marker
Inwin, 2012 ⁹⁹	59 to 86	Female: 61%	NR	9	Sedentary/Health	Tai Chi Chih vs health education/Moderate/No	46/37	CRP, IL-6, IL-18
Larose, 2011 ¹⁰⁰	39 to 70	Female 36.2%	Mean: 34.9	24	Sedentary/Diabetes mellitus	Aerobic or resistance training/Vigorous/No	60/63	Relative CRF, HbA1c
Jessup, 1998 ¹⁰¹	61 to 77	Female: 52%	NR	16	Sedentary/Health	Treadmills and stair-climbers/Vigorous/No	11/10	Relative CRF
Kadoglou, 2012 ¹⁰²	Mean: 61.3±2.1	Female: 67.6%	T: 32.74±4.05 C: 31.58±5.71	12	NR/Diabetes mellitus	Resistance Exercise/Vigorous/No	23/24	Relative CRF, TC, TG, HDL-C, LDL-C, Fasting glucose, Insulin, HOMA-IR, HbA1c, Fibrinogen
Karstoft, 2013 ¹⁰³	C: 57.1±3.0 T: 60.8±2.2	Female: 31%	NR	16	NR/Diabetes mellitus	Walking/Moderate/No	12/8	Absolute CRF, Relative CRF, TC, TG, HDL-C, LDL-C, Fasting glucose, Insulin, HbA1c
King, 1989 ¹⁰⁴	Male 49±6 Female 47±5	Female: 50%	NR	24	Sedentary/Health	Aerobic/Exercise/Training/Moderate/No	29/28	Relative CRF
Kirk, 2003 ¹⁰⁵	19 to 30	Male only	27 to 32	36	Sedentary/Health	Aerobic exercise/Moderate/No	16/15	Absolute CRF, Relative CRF
Kirk, 2003 ¹⁰⁵	19 to 30	Female only	27 to 32	36	Sedentary/Health	Aerobic Exercise/Moderate/No	25/18	Absolute CRF, Relative CRF
Kiviniemi, 2007 ¹⁰⁶	T: 31±6 C 35±8	Male only	T: 24±2 C: 25±1	4	Active/Health	Running/Vigorous/No	9/10	Absolute CRF, Relative CRF
Kokkinos, 1998 ¹⁰⁷	35 to 76	Male only	T: 30±4 C: 31±5	16	Sedentary/Hypertension	Aerobic/Exercise/Moderate/No	15/19	TC, TG, HDL-C, HDL-C2, HDL-C3, LDL-C, Apo AI, Apo B
Kraemer, 1997 ¹⁰⁸ 1999 ¹⁰⁹	Mean: 35.4±8.5	Female only	C: 28.2±4.0 T: 28.3±4.2	12	NR/Health	Aerobic endurance exercise/Vigorous/Dietary intervention	9/8	Absolute CRF, Relative CRF, TG, Fasting glucose
Krogh, 2012 ¹¹⁰	18 to 60	Female: 67%	NR	12	NR/Health	Aerobic exercise/Vigorous/No	56/59	Relative CRF, TC, TG, HDL-C, Fasting glucose, Insulin
Krustrup, 2009 ¹¹¹	20 to 43	Male only	Mean: 25.7	12	Sedentary/Health	Recreational soccer/Vigorous/No	12/10	Relative CRF, TC, HDL-C, LDL-C, Absolute CRF, CRP, Fasting glucose, Insulin
Kukkonen-Harjula, 1998 ¹¹²	31 to 52	Female: 53%	18.5 to 32.7	15	Sedentary/Health	Walking/Training/Moderate/No	58/58	Absolute CRF, Relative CRF, Fibrinogen
Kurban, 2011 ¹¹³	T: 53.77±8.2 C: 53.57±6.6	Female: 51.7%	T: 30.90±4.64 C: 30.23±4.74	12	Sedentary/Diabetes Mellitus	Walking/Moderate/No	30/30	Fasting glucose, HbA1c

Continued

Table 3. Continued

Study	Age, y	Sex	BMI, kg/m ²	Duration, wk	Activity/Medical Condition	Exercise Type, Intensity and Cointerventions	N _r /N _c	Marker
Laaksonen, 2000 ¹¹⁴	20 to 40	Male only	Mean: 24.4	16	Active/Diabetes mellitus	Sustained running/Moderate/No	20/22	Relative CRF, TC, TG, HDL-C, LDL-C, Apo AI, Apo B, HbA1c
Labrunee, 2012 ¹¹⁵	Mean: 52.7±8.2	Female: 82.6%	Mean: 38.5±7.6	12	NR/Diabetes mellitus	Cyclergometer training/NR/No	11/12	Relative CRF, TC, TG, HDL-C, LDL-C, Fasting glucose, HOMA-IR, HbA1c
Lake, 1996 ¹¹⁶	18 to 28	Male only	NR	6	Active/Health	Running training/Moderate/No	8/7	Relative CRF
LaPerriere, 1994 ¹¹⁷	18 to 40	Male only	NR	10	Sedentary/Health	Aerobic exercise/Vigorous/No	7/7	Relative CRF
Lee, 2003 ¹¹⁸	18 to 30	Male only	NR	2	Sedentary/Health	Cycle ergometer/Vigorous/No	12/12	Relative CRF
Lee, 2012 ¹¹⁹	30 to 50	Female only	≥25	14	NR/Health	NR/Moderate/No	8/7	Relative CRF, TC, TG, HDL-C, LDL-C, CRP, IL-6, TNF-α
LeMura, 2000 ¹²⁰	Mean: 20.4±1	Female only	T: 20.8±2.1 C: 21.8±2.3	16	Sedentary/Health	Resistance training and aerobic training/Vigorous/No	10/12	Relative CRF, TC, TG, HDL-C, LDL-C
Libardi, 2012 ¹²¹	T 48.6±5.0 C 49.1±5.5	Male only	T: 27.5±4.1 C: 24.7±3.3	24	Sedentary/Health	Resistance training/Moderate/No	12/13	Relative CRF, TC, TG, HDL-C, LDL-C, CRP, IL-6, TNF-α, Fasting glucose
de Lima, 2012 ¹²²	20 to 35	Female only	C: 23.0±2.4 T: 22.8±3.6	12	Sedentary/Health	Muscular endurance/Moderate/No	10/8	Relative CRF
Lovell, 2011 ¹²³	70 to 80	Male only	NR	20	Active/Health	Cycle ergometer and stretching/Vigorous/No	12/12	Absolute CRF, Relative CRF
Martin, 1990 ¹²⁴	T: 58.6±4.6 C 60.6±7.4	Female only	NR	12	Sedentary/Health	Cycle ergometer training/Vigorous/No	14/14	Absolute CRF, Relative CRF
McAuley, 2002 ¹²⁵	25 to 70	Female: 67%	<27	16	NR/Health	NR/Moderate/Dietary intervention	29/23	TC, TG, HDL-C, LDL-C, Fasting glucose, Insulin
Meckling, 2007 ¹²⁶	20 to 62	Female only	25 to 30	12	NR/Health	Resistance training and endurance training/Moderate and vigorous/Dietary intervention or high protein	11/8	TC, TG, HDL-C, Fasting glucose, Insulin
Meyer, 2006 ¹²⁷	30 to 60	Female: 47%	NR	12	Sedentary/Health	Walking or running/Vigorous/No	12/13	Relative CRF
Miyaki, 2012 ¹²⁸	Mean: 60±6	Female only	NR	8	Sedentary/Health	Walking and cycling/Moderate/No	11/11	Relative CRF, TC, TG, HDL-C, LDL-C, Fasting glucose

Continued

Table 3. Continued

Study	Age, y	Sex	BMI, kg/m ²	Duration, wk	Activity/Medical Condition	Exercise Type, Intensity and Cointerventions	N _r /N _c	Marker
Morey, 2012 ¹²⁹	60 to 89	Female: 3%	25 to 45 kg/m ²	52	NR/Health	Enhanced fitness intervention/NR/No	180/122	TC, TG, HDL-C, LDL-C, Fasting glucose, Insulin, HOMA-IR HbA1c
Morgan, 2010 ¹³⁰	50 to 70	Females: 73.3%	NR	15	Sedentary/Health	Walk/Moderate/No	14/15	TC, HDL-C
Morton, 2010 ¹³¹	T: 61+10 C: 63+9	Females: 22.2%	T: 32+7 C: 30.9+7.0	7	Sedentary/Diabetes mellitus	Walking/Vigorous/No	15/12	Absolute CRF, Relative CRF, Fasting glucose, HbA1c
Murphy, 2006 ¹³²	Mean: 41.5±9.3	Female: 64.9%	T: 26.8±5.6 C: 24.4±3.6	8	Sedentary/Health	Walking/Moderate/No	21/12	TC, TG, HDL-C, LDL-C, CRP
Murtagh, 2005 ¹³³	Mean: 45.7±9.4	Female: 64.6%	<30	12	Sedentary/Health	Walking/Vigorous/No	18/11	Relative CRF, TC, TG, HDL-C, LDL-C
Musa, 2009 ¹³⁴	21 to 36	Male only	Normal	8	Sedentary/Health	Interval running/Moderate/No	20/16	TC, HDL-C
Nemoto, 2007 ¹³⁵	Mean: 63±6	Female: 75.6%	C: 22.8 T moderate: 22.8 vigorous: 22.9	20	NR/Health	Walking/Moderate/No	43/37	Absolute CRF
Nicklas, 2009 ¹³⁶	50 to 70	Female only	25 to 40	20	Sedentary/Health	Calorie restriction and aerobic exercise/Moderate/dietary intervention	36/29	TG, HDL-C, LDL-C, Fasting glucose, Insulin
Niederseer, 2011 ¹³⁷	T: 66.6±2.1 C: 67.3±4.4	Female: 47.6%	T: 27.1±3.3 C: 25.4±2.8	12	Active/Health	Skating/Moderate/No	22/20	Relative CRF, TC, TG, HDL-C, LDL-C, CRP VCAM-1, ICAM-1, Endothelin-1, e_selectin
Nieman, 1993 ¹³⁸	67 to 85	Female only	Mean: 23.7	12	Sedentary/Health	Walk/Moderate/No	14/16	Relative CRF, TC, TG, HDL-C, LDL-C
Nieman, 1998 ¹³⁹	Mean: 45.6±1.1	Female only	Mean: 33.1±0.6	12	Active/Health	Walking/Moderate and vigorous/dietary intervention	22/26	Absolute CRF, TC, Fasting glucose
Nordby, 2012 ¹⁴⁰	20 to 40	Male only	25 to 30	12	Sedentary/Health	Endurance training (cycling, running, cross-training, or rowing)/Moderate/Dietary intervention	12/12	Absolute CRF, Relative CRF, Fasting glucose, Insulin, HbA1c
O'donovan, 2005 ¹⁴¹	30 to 45	Male only	NR	24	Sedentary/Health	NR/Moderate/No	14/15	Absolute CRF, Relative CRF, TC, TG, HDL-C, LDL-C, Fibrinogen
Panton, 1990 ¹⁴² Pollock, 1991 ¹⁴³	70 to 79	Female: 53.1%	NR	24	Sedentary/Health	Aerobic and resistance training/NR/No	13/15	Relative CRF

Continued

Table 3. Continued

Study	Age, y	Sex	BMI, kg/m ²	Duration, wk	Activity/Medical Condition	Exercise Type, Intensity and Cointerventions	N _r /N _c	Marker
Phillips, 2012 ¹⁴⁴	62 to 67	Female only	Overweight or Obesity	12	Active/Health	Aerobic training/Vigorous/No	11/12	Leptin
Poehlman, 2000 ¹⁴⁵	18 to 35	Female only	C: 22±2 T: 22±2	24	Sedentary/Health	Endurance training (N=14), resistance training/Vigorous/No	14/20	Absolute CRF
Posner, 1992 ¹⁴⁶	60 to 86	Female: 61.9%	NR	16	Sedentary/Health	Cycle ergometer/Moderate/No	166/81	Absolute CRF, Relative CRF
Probart, 1991 ¹⁴⁷	≥70	Female only	Mean: 24.6	26	NR/Health	Walking on a treadmill/Vigorous/No	10/6	Absolute CRF, Relative CRF
Pyka, 1994 ¹⁴⁸	64 to 78	Female: 60%	NR	104	NR/Health	Resistance exercise (walking and stretching)/Moderate/No	8/6	IGF-1
Chow, 1987 ¹⁴⁹	50 to 62	Female only	NR	52	NR/Health	Aerobic exercise or aerobic and strengthening exercises/Vigorous/No	17/15	Relative CRF
Raz, 1988 ¹⁵⁰	24 to 26	Male only	Mean: 22.8	9	Sedentary/Health	Aerobic exercise/Vigorous/No	28/27	Relative CRF, TC, TG, HDL-C, HDL-C2, HDL-C3, LDL-C, HbA1c
Ready, 1996 ¹⁵¹	≥50	Female only	NR	24	Sedentary/Health	Walk/Moderate/No	17/18	Absolute CRF, Relative CRF, TC, TG, HDL-C, LDL-C
Romero-Arenas, 2013 ¹⁵²	55 to 75	NR	Mean: 29.9	12	Active/Health	Resistance training/Moderate/No	16/10	Relative CRF
Santa-Clara, 2003, ¹⁵³ 2006 ¹⁵⁴	45 to 70	Female only	Caucasian-American T: 25±3 C: 27±5 African-American T: 29±7 C: 29±6	24	Sedentary/Health	Treadmill walking/Jogging, stationary cycling, and rowing/Vigorous/No	17/16	Relative CRF, IGF I
Santiago, 1995 ¹⁵⁵	22 to 40	Female only	≥31	40	Sedentary/Hyperlipidemia	Walking/Vigorous/No	16/11	Relative CRF, TC, TG, HDL-C, LDL-C
Scanga, 1998 ¹⁵⁶	Mean: 38±7	Female only	C: 35.2±3.9 T: 36.6±4.3	8	NR/Health	Aerobic and resistance training/Moderate/Dietary intervention	10/12	Absolute CRF, Relative CRF
Seifert, 2009 ¹⁵⁷	C: 30±5 T: 32±6	Male only	25 to 30	12	Sedentary/Health	Endurance training/Moderate/Endurance training	10/7	Fasting glucose

Continued

Table 3. Continued

Study	Age, y	Sex	BMI, kg/m ²	Duration, wk	Activity/Medical Condition	Exercise Type, Intensity and Cointerventions	N _r /N _c	Marker
Lamina, 2011 ¹⁵⁸	50 to 70	Male only	20 to 30	8	Sedentary/Hypertension	Bicycle ergometer/Vigorous/No	112/105	Relative CRF
Sillanpaa, 2009, ¹⁵⁹ 2010 ¹⁶⁰	39 to 64	Female only	Normal	21	NR/Health	NR/Vigorous/	15/12	TC, TG, HDL-C, LDL-C, Fasting glucose, Insulin
Sloan, 2013 ¹⁶¹	T: 54.1±5.8 C: 54.1±4.9	Female only	T: 29.2±4.9 C: 27.1±5.9	16	Sedentary/Health	Walking/Moderate/No	16/16	Relative CRF
Spence, 2013 ¹⁶²	NR	Male only	T: 73.0±16.9 C: 81.7±15.23	24	Active/Health	Endurance vs resistance/Moderate/No	10/13	Absolute CRF, Relative CRF
Stachenfeld, 1998 ¹⁶³	> 65	Female only	NR	24	Active/Health	Aerobic training/Vigorous/No	9/8	Relative CRF
Stein, 1992 ¹⁶⁴	T: 46.2±6.1 C: 45.0±6.1	Male only	NR	8	Sedentary/Health	Aerobic exercise training/Moderate/No	19/14	Absolute CRF
Stensel, 1993 ¹⁶⁵	42 to 59	Male only	Normal	52	Sedentary/Health	Brisk/Walking/Moderate/No	24/24	TC, TG, HDL-C, LDL-C, VLDL-C, Apo AI, Apo B, Lp-A
Stensvold, 2010 ¹⁶⁶	Mean: 50.2±9.5	Female: 39.5%	C: 31.9±4.1 T: 32.2±4.2	12	Sedentary/Health	Strength training vs aerobic interval training/Vigorous/No	11/10	Relative CRF, TC, TG, HDL-C, Fasting glucose, C-peptide, HbA1c
Strasser, 2009 ¹⁶⁷	>70	Females: 55.6%	Mean: 26.9	24	Sedentary/Health	Endurance training or-and resistance training/Vigorous/No	13/14	Relative CRF
Sung, 2012 ¹⁶⁸	>70	Female: 65%	NR	24	NR/Diabetes mellitus	Walking/Moderate/No	22/18	TC, TG, HDL-C, LDL-C, Fasting glucose, HbA1c
Takeshima, 2002 ¹⁶⁹	60 to 75	Female only	NR	7	Sedentary/Health	Stretching, endurance-type exercise (walking and dancing, 30 min), Resistance exercise/Vigorous/No	15/15	TC, TG, HDL-C, LDL-C
Takeshima, 2004 ¹⁷⁰	60 to 83	8 Males and 10 Females	NR	12	Sedentary/Health	Progressive accommodating circuit exercise/Vigorous/No	18/17	Absolute CRF, TC, TG, HDL-C, LDL-C
Thomas, 1984 ¹⁷¹	18 to 32	Female only	NR	12	Active/Health	Running/Vigorous/No	9/6	Absolute CRF, Relative CRF, TC, TG, HDL-C
Thompson, 2010 ¹⁷²	45 to 64	Male only	C: 28.0±2.7 T: 28.5±2.9	24	Sedentary/Health	NR/Moderate/Dietary intervention	20/21	Relative CRF, TC, TG, HDL-C, CRP, IL-6, Fasting glucose, Insulin, HOMA-IR

Continued

Table 3. Continued

Study	Age, y	Sex	BMI, kg/m ²	Duration, wk	Activity/Medical Condition	Exercise Type, Intensity and Cointerventions	N _r /N _c	Marker
Tjonna, 2008 ¹⁷³	Mean: 52.3±3.7	Female: 53.6%	C: 32.1±3.3 T: 29.4±4.9	16	NR/Health	Aerobic interval training/ Vigorous/No	8/9	Relative CRF, TG, HDL-C, Adiponectin, Fasting glucose, Insulin, HOMA-B
Toledo, 2008 ¹⁷⁴	>30	Female: 62.5%	T: 34.8±1.1 C: 33.4±1.2	16	Sedentary/Health	Walking/Moderate/Dietary training	9/7	FFA, Fasting glucose, Insulin
Tseng, 2013 ¹⁷⁵	18 to 29	Male only		12	NR/Health	Aerobic, resistance or combined aerobic and resistance training/ Moderate/	10/10	TG, HDL-C, Fasting glucose
Tulppo, 2003 ¹⁷⁶	35±10	Male only	Moderate: 25±3 Vigorous: 25±2 C: 25±3	8	Sedentary/Health	Walking and Jogging/ Vigorous/No	16/11	Absolute CRF, Relative CRF
Utter, 1998 ¹⁷⁷	25 to 75	Female only	25 to 65	12	Sedentary/Health	Walk/Moderate and vigorous/Dietary intervention	21/22	Absolute CRF, Relative CRF
Van Aggel-Leijssen, 2001, ¹⁷⁸ 2001 ¹⁷⁹	C: 38.6±6.5 T: 39.3±7.7	Male only	C: 32.6±2.5 T: 32.0±2.1	12	Sedentary/Health	Cycling on an ergometer, walking, and aqua-jogging/Moderate/Energy restriction and dietary intervention	20/17	Absolute CRF, FFA, Fasting glucose, Insulin
Van Den Berg, 2010 ¹⁸⁰	18 to 30	Male only	NR	7	Sedentary/Health	Motor-driven treadmill/ Moderate/No	9/13	Absolute CRF, Relative CRF
Vicente-Campos, 2012 ¹⁸¹	62 to 67	Female: 60%	NR	28	Sedentary/Health	Aerobic training/Vigorous/ No	22/21	TC, TG, HDL-C, LDL-C
Vincent, 2002 ¹⁸²	60 to 83	Female and Male	NR	24	Sedentary/Health	Resistance training/ Moderate/No	24/16	Relative CRF
Visser, 2010 ¹⁸³	C: 44.8±11.4 T: 44.7±13.0	Female: 74.7%	C: 29.8±2.6 T: 33.1±3.4	52	Active/Health	Bicycle ergometer/ Vigorous/No	20/20	TG, HDL-C
Vitello, 1997 ¹⁸⁴	Male: 66.9±1.0 Female: 67.1±1.7	Female: 40.3%	NR	24	Sedentary/Health	Endurance or stretching/ Flexibility/Moderate/No	30/22	Relative CRF, IGF-1
Volpe, 2008 ¹⁸⁵	Mean: 44.2±7.2	Female only	Mean: 30.5±2.7	52	Sedentary/Health	Skiing/NR/Dietary intervention	14/14	TC, TG, HDL-C, LDL-C
Waib, 2011 ¹⁸⁶	47 to 56	Training: 60.8%	T: 30.0 (28.8 to 31.2) C: 29.6 (27.8 to 31.5)	15	Sedentary/ Hypertension	Aerobic training jogging on an electronic treadmill/ Moderate/No	55/24	Relative CRF, HOMA-IR, C-peptide

Continued

Table 3. Continued

Study	Age, y	Sex	BMI, kg/m ²	Duration, wk	Activity/Medical Condition	Exercise Type, Intensity and Cointerventions	N _r /N _c	Marker
Walliman, 2009 ¹⁸⁷	18 to 64	Female: 75%	Mean: 30±2	8	Sedentary/Health	Aerobic Exercise/Vigorous/ Dietary education	6/8	TC, TG, HDL-C, LDL-C
Wang, 2005 ¹⁸⁸	C: 24.7±2.3 T: 23.5±1.6	Male only	C: 22.7±1.7 T: 23.1±0.6	8	Sedentary/Health	Bicycle ergometer/ Moderate/No	15/15	Relative CRF
Wang, 2011 ¹⁸⁹	T: 21.5±0.7 C: 22.9±0.4	Male only	T: 22.9±0.4 C: 23.3±0.7	4	Sedentary/Health	Bicycle ergometer/ Moderate/No	10/10	Relative CRF
Warner, 1989 ¹⁹⁰	27 to 63	Female: 35.3%	NR	12	Sedentary/ Hyperlipidemia	Aerobic training/Vigorous/ Fish oil intervention	7/7	Relative CRF, LDL-C, Apo B
Warren, 1993 ¹⁹¹	Mean: 73.6±0.7	Female only	Normal	12	Sedentary/Health	Walking or calisthenics control/Moderate/No	14/16	Relative CRF
Watkins, 2003 ¹⁹²	NR	NR	T: 33.4±4.5 C: 34.0±5.2	24	Sedentary/Health	Aerobic training/Vigorous/ Weight lost	14/9	Relative CRF, TC, TG, HDL-C, LDL-C, Fasting glucose, Insulin
Wong, 1990 ¹⁹³	Mean: 62.7±3.1	Male only	Normal	52	NR/Health	Treadmill walking/ Moderate/No	69/69	Absolute CRF,
Woods, 1999 ¹⁹⁴	Mean: 65±0.8	NR	NR	24	Sedentary/Health	Aerobic exercise/ Moderate/No	14/15	Absolute CRF, Relative CRF
Wu, 2011 ¹⁹⁵	45 to 64	Female: 71.9%	16.0 to 33.3	36	NR/Health	Aerobic exercise, stretching exercise/Vigorous/No	68/67	TG, Aciponectin, Fasting glucose, Insulin, HOMA-IR
Yoshizawa, 2009 ¹⁹⁶	50 to 65	Female only	Mean: 23.7	8	Sedentary/Health	Resistance training/ Moderate/No	12/13	Relative CRF, TC, TG, HDL-C, LDL-C
Yoshizawa, 2009 ¹⁹⁷	32 to 59	Female only	T: 24.6±1.1 C: 21.8±1.0	12	Sedentary/Health	Aerobic exercise training/ Moderate/No	12/12	Relative CRF, TC, HDL-C, LDL-C
You, 2006 ¹⁹⁸	50 to 70	Female only	25 to 40	20	Sedentary/Health	Treadmill/Moderate/Dietary intervention	13/14	Absolute CRF, Relative CRF
Ziemann, 2011 ¹⁹⁹	T: 21.6±1.1 C: 21.0±0.9	Male only	T: 24.5±1.8 C: 23.0±1.9	6	Active/Health	NR/Vigorous/Physical education	10/11	Absolute CRF, Relative CRF

Apo AI indicates apolipoprotein A1; Apo AII, apolipoprotein A2; Apo B, apolipoprotein B; BMI, body mass index; C, control group; CRF, cardiorespiratory fitness; CRP, C-reactive protein; FFA, free fatty acid; HbA1c, glycosylated hemoglobin A1c; HDL-C, high-density lipoprotein cholesterol; HOMA-IR, homeostatic model assessment–insulin resistance; ICAM-1, intercellular adhesion molecule 1; IGF-1, insulin-like growth factor 1; IGF-BP, insulin-like growth factor binding protein; IL, interleukin; LDL-C, low-density lipoprotein cholesterol; NR, not reported; PAL-1, plasminogen activator inhibitor-1; T, training group; TC, total cholesterol; TNF, tumor necrosis factor; VCAM-1, vascular cell adhesion molecule 1; VLDL-C, very low-density lipoprotein cholesterol.

Description of Study Quality

The quality of studies included was heterogeneous (Figure 2). Random sequence generation was reported in 50 trials, and allocation concealment was reported in 20 trials; only 1 of these trials showed a high probability of selection bias because the random allocation was not concealed. The risk of potential performance bias was high in all trials because it was not possible to blind participants and trainers in exercise interventions. Among 26 trials reporting the blinding of outcome assessment, the risk of detection bias was high in only 1 trial. The risk of other bias was high in 46 trials because of poor compliance, the use of intention-to-treat analysis, limited sample sizes, or limitations discussed in individual articles.

Cardiorespiratory Fitness

A total of 67 and 123 independent comparisons were included in the primary analysis for absolute and relative CRF, respectively (Table 4). Both measures were significantly raised by exercise interventions (both $P<0.001$). The WMDs comparing exercise groups and control groups were 0.28 L/min (95% CI 0.23 to 0.33; $I^2=93.7%$; $P<0.001$ for heterogeneity) for absolute CRF and 3.90 mL/kg per minute (95% CI 3.45 to 4.35; $I^2=91.4%$; $P<0.001$ for heterogeneity) for relative CRF. The Egger’s tests showed evidence of publication bias in both instances ($P<0.05$). When applying the trim and fill method, the conclusion regarding the associations between exercise training and CRF did not change (filled analysis for absolute CRF: WMD 0.14 L/min, 95% CI 0.20 to 5.28, $P<0.001$; filled analysis for relative CRF: WMD 2.56 mL/kg per minute, 95% CI 3.06 to 10.16, $P<0.001$).

Lipid and Lipoprotein Markers

The number of comparisons for each lipid and lipoprotein marker is shown in Table 4. Exercise training significantly lowered the levels of triglycerides ($P=0.02$) and increased the levels of high-density lipoprotein cholesterol (HDL-C; $P<0.001$) and apolipoprotein A1 ($P<0.001$). The WMDs were -5.31 mg/dL (95% CI -10.63 to -0.89 ; $I^2=71.8%$; $P<0.001$ for heterogeneity) for triglycerides, 2.32 mg/dL (95% CI 1.16 to 3.87; $I^2=87.5%$; $P<0.001$ for heterogeneity) for HDL-C, and 0.03 g/L (95% CI 0.02 to 0.04; $I^2=0.0%$; $P=0.81$ for heterogeneity) for apolipoprotein A1. The P value of the Egger’s test for HDL-C was 0.03, suggesting possible publication bias; however, the results from the trim and fill analysis did not show substantial impact of publication bias on the estimates or the statistics (filled analysis: WMD 2.32 mg/dL, 95% CI 1.16 to 3.87, $P<0.001$).

Adipokine and Inflammatory Markers

Significant associations were found for interleukin-18 (WMD 18.3 pg/mL; 95% CI 0.10 to 36.6; $I^2=0.0%$; $P=0.95$ for heterogeneity) but not for C-reactive protein, interleukin-6, or tumor necrosis factor α in the primary analysis (Table 4). Although there was no effect on adiponectin, exercise training was significantly associated with reduced levels of leptin (WMD -2.72 ng/mL; 95% CI -4.03 to -1.42 ; $I^2=82.10%$; $P<0.001$ for heterogeneity) (Table 4).

Markers of Glucose Intolerance and Insulin Resistance

Table 4 also shows the effects of exercise training on markers of glucose intolerance and insulin resistance. Fasting insulin

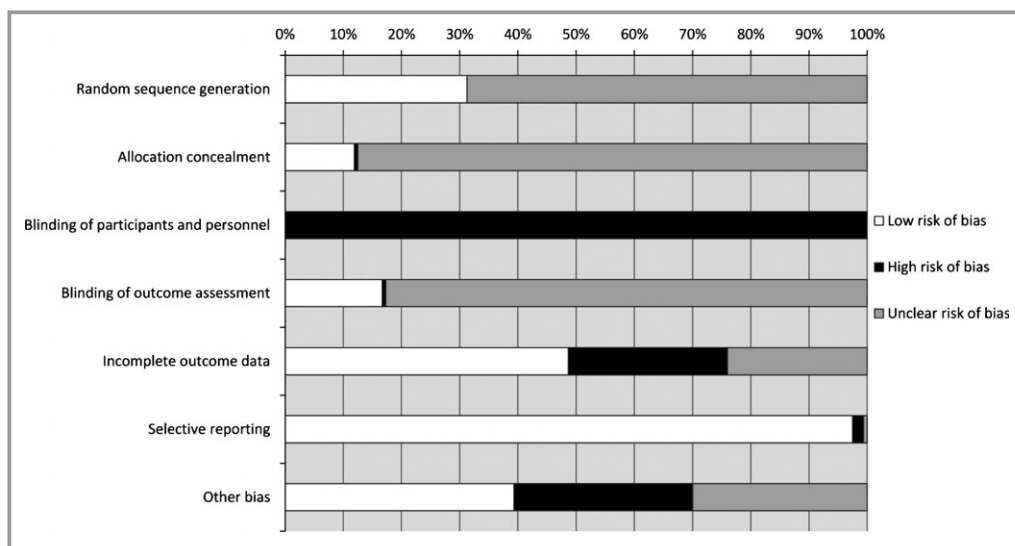


Figure 2. Assessment of risk of bias: summary for items of bias.

Table 4. WMDs in Cardiorespiratory Fitness and Circulating Concentrations of Biomarkers Between Exercise Groups and Control Groups

Outcome	No.*	Number of Participants		WMD	95% CI	P _{WMD}
		Exercise	Control			
Cardiorespiratory fitness						
Absolute, L/min	67	1448	1272	0.28	0.23 to 0.33	<0.001
Relative, mL/kg per minute	122	2543	2249	3.94	3.48 to 4.39	<0.001
Lipid and lipoprotein markers						
TC, mg/dL	68	1754	1604	1.16	−9.28 to 11.99	0.82
TG, mg/dL	66	1851	1703	−5.31	−10.63 to −0.89	0.02
HDL-C, mg/dL	74	1967	1800	2.32	1.16 to 3.87	<0.001
HDL ₂ -C, mg/dL	5	91	92	0.39	−1.93 to 2.32	0.8
HDL ₃ -C, mg/dL	3	62	62	−0.08	−1.55 to 1.55	0.94
LDL-C, mg/dL	59	1681	1525	3.87	−8.12 to 0.39	0.08
VLDL-C, mg/dL	7	130	102	−3.09	−8.51 to 2.32	0.29
Apo AI, g/L	5	63	62	0.03	0.02 to 0.04	<0.001
Apo AII, g/L	2	140	126	0.01	−0.01 to 0.03	0.2
Apo B, g/L	5	103	87	0.01	−0.01 to 0.03	0.4
FFA, mmol/L	6	70	62	−0.06	−0.14 to 0.03	0.21
Adipokine and inflammatory markers						
CRP, mg/L	13	598	554	−0.22	−0.78 to 0.34	0.44
IL-6, pg/mL	6	130	121	−0.05	−0.27 to 0.17	0.66
IL-18, pg/mL	2	67	56	18.3	0.10 to 36.6	0.05
TNF- α , pg/mL	3	43	44	0.21	−0.37 to 0.79	0.48
Adiponectin, μ g/mL	6	273	267	0.52	−0.20 to 1.23	0.16
Leptin, ng/mL	7	312	315	−2.72	−4.03 to −1.42	<0.001
Glucose/insulin metabolism markers						
Glucose, mmol/L	49	1720	1569	−0.07	−0.13 to 0.004	0.06
Insulin, μ IU/mL	29	1272	1149	−1.03	−1.69 to −0.37	0.002
HOMA-IR	14	1033	912	−0.3	−0.49 to −0.11	0.002
HbA1c, %	19	972	878	−0.28	−0.42 to −0.14	<0.001
C-peptide, nmol/L	2	66	34	−0.08	−0.29 to 0.46	0.67
IGF-1, ng/mL	5	230	207	3.16	−2.98 to 9.31	0.31
IGF-BP3, μ g/mL	2	170	164	−0.002	−0.23 to 0.23	0.99
Hemostatic factors						
Fibrinogen, g/L	2	36	39	−0.39	−0.75 to −0.03	0.04
Endothelin-1, pg/mL	2	34	32	−0.22	−0.62 to 0.19	0.29
Angiotensin II, pg/mL	2	24	25	−1.32	−2.11 to −0.54	0.001

Apo AI indicates apolipoprotein A1; Apo AII, apolipoprotein A2; Apo B, apolipoprotein B; CRP, C-reactive protein; FFA, free fatty acid; HbA1c, glycosylated hemoglobin A1c; HDL-C, high-density lipoprotein cholesterol; HOMA-IR, homeostatic model assessment–insulin resistance; IGF-1, insulin-like growth factor 1; IGF-BP3, insulin-like growth factor binding protein 3; IL, interleukin; LDL-C, low-density lipoprotein cholesterol; TC, total cholesterol; TG, triglycerides; TNF- α , tumor necrosis factor α ; VLDL-C, very low-density lipoprotein cholesterol; WMDs, weighted mean differences.

*Number of eligible independent comparisons.

levels; homeostatic model assessment–insulin resistance, or HOMA-IR; and glycosylated hemoglobin A1c were significantly lowered in exercise groups compared with control

groups ($P=0.002$, $P=0.002$, and $P<0.001$) (Table 4). The WMDs between exercise groups and control groups were $-1.03 \mu\text{IU/mL}$ (95% CI -1.69 to -0.37 ; $I^2=79.8\%$; $P<0.001$

for heterogeneity) for fasting insulin. The WMD for HOMA-IR was -0.30 (95% CI -0.49 to -0.11 ; $I^2=77.5\%$; $P<0.001$ for heterogeneity), whereas the WMD for hemoglobin A1c was -0.28% (95% CI -0.42 to -0.14 ; $I^2=80.1\%$; $P<0.001$ for heterogeneity). The Egger's tests for fasting glucose and insulin were not suggestive of substantial publication bias ($P=0.18$ and $P=0.24$, respectively). The results from the trim and fill analysis suggested that there was no substantial impact of publication bias on the results for HOMA-IR or hemoglobin A1c (filled analysis for HOMA-IR: WMD -0.30 , 95% CI -0.49 to -0.11 , $P=0.002$; filled analysis for hemoglobin A1c: WMD -0.28% , 95% CI -0.42 to -0.14 , $P<0.001$).

Hemostatic Factors

The primary analysis examined 3 hemostatic factors: fibrinogen, endothelin-1, and angiotensin II (Table 4). On average, the levels of fibrinogen and angiotensin II were 0.39 g/L (95% CI 0.03 to 0.75 ; $I^2=45.00\%$; $P=0.18$ for heterogeneity) and 1.32 pg/mL (95% CI 0.54 to 2.11 ; $I^2=0.00\%$; $P=0.71$ for heterogeneity) lower in exercise groups than in control groups. No significant association was found for endothelin-1.

Subgroup Analyses

Our meta-regression results suggest that the differences in CRF between exercise and control groups were modified by age and sex (absolute CRF: $P=0.008$ and $P<0.001$ for age and sex, respectively; relative CRF: $P=0.003$ and $P=0.001$ for age and sex, respectively) (Table 5, Figure 3). In addition, the effects of exercise on levels of total cholesterol ($P=0.04$), low-density lipoprotein cholesterol (LDL-C; $P=0.06$), and fasting insulin ($P=0.05$) were modified by the presence of at least 1 of the following comorbidities: type 2 diabetes, hypertension, hyperlipidemia, and metabolic syndrome (Tables 6 and 7, Figure 3). Sex differences in the effects of exercise were also found for fasting insulin ($P=0.04$).

After conducting meta-regressions, analyses within subgroups were performed. Compared with older people, those aged <50 years appeared to have larger changes in CRF. Consistent with the meta-regression results, men seemed to have greater exercise-related improvement in CRF, LDL-C, and fasting insulin than women did (Figure 3). Exercise interventions appreciably improved the levels of total cholesterol, LDL-C, and fasting insulin ($P=0.004$, $P=0.01$, and $P=0.01$,

Table 5. WMDs in Absolute and Relative Cardiorespiratory Fitness Comparing Exercise Intervention Groups to Control Groups by Specific Modifiers

Modifier	Absolute CRF (L/min)					Relative CRF (mL/kg per minute)				
	n	WMD	95% CI	I^2 , %	$P_{\text{interaction}}^*$	n	WMD	95% CI	I^2 , %	$P_{\text{interaction}}$
Age, y										
<50	16	0.47	0.34 to 0.60	93.4	0.008	28	5.60	4.56 to 6.65	85.1	0.003
≥ 50	12	0.21	0.11 to 0.32	84.0		30	3.31	2.46 to 4.15	91.0	
Sex										
Women	25	0.19	0.13 to 0.24	92.3	<0.001	48	3.24	2.61 to 3.87	88.7	0.001
Men	27	0.42	0.32 to 0.53	90.4		37	5.43	4.32 to 6.53	90.2	
Lifestyle										
Active	9	0.33	0.15 to 0.51	97.0	0.89	14	3.62	1.39 to 5.85	96.5	0.83
Sedentary	43	0.31	0.25 to 0.37	88.4		88	3.85	3.36 to 4.33	90.5	
BMI [†]										
Obese	19	0.28	0.20 to 0.36	93.3	0.65	19	3.85	2.83 to 4.87	94.9	0.96
Nonobese	20	0.26	0.17 to 0.36	89.1		46	4.01	3.22 to 4.79	85.7	
Health status [‡]										
Yes	8	0.33	0.07 to 0.60	88.2	0.84	16	3.34	2.63 to 4.04	74.8	0.46
None	53	0.27	0.22 to 0.33	94.6		94	4.10	3.51 to 4.71	92.7	
Duration, wk										
<16	39	0.33	0.25 to 0.40	91.3	0.09	69	3.83	3.12 to 4.54	90.7	0.72
≥ 16	28	0.21	0.15 to 0.28	92.3		54	3.90	3.34 to 4.35	90.4	

BMI indicates body mass index; CRF, cardiorespiratory fitness; WMDs, weighted mean differences.

* P values for the impact of potential modifiers on the exercise effects.

[†]BMI in kg/m^2 : obese ≥ 30 ; nonobese <30 .

[‡]Health status: participants having at least 1 of type 2 diabetes, hypertension, hyperlipidemia, or metabolic syndrome (yes) vs those with none of them (none).

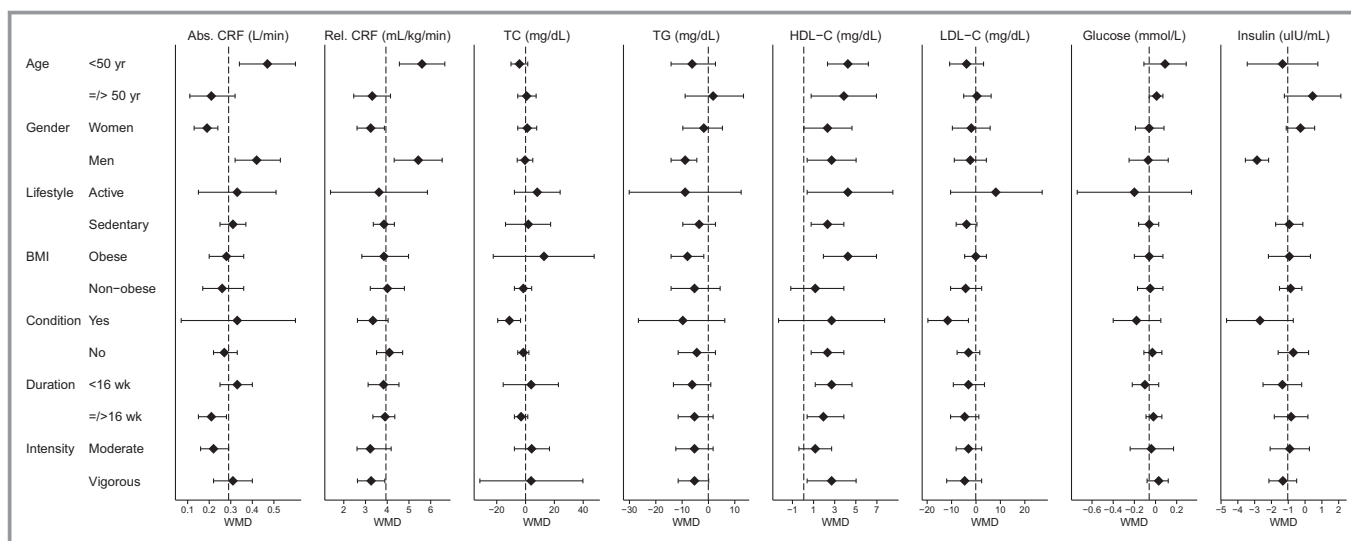


Figure 3. Forest plot of effects of exercise interventions on cardiorespiratory fitness, TC, TG, HDL-C, LDL-C, Fasting glucose, and fasting insulin within subgroups. The WMDs (diamonds) and corresponding CIs (extended line) between exercise groups and control groups are shown for each subgroup. Abs. CRF indicates absolute cardiorespiratory fitness; BMI, body mass index; HDL-C, high-density lipoprotein cholesterol; LDL-C, low-density lipoprotein cholesterol; Rel. CRF, relative cardiorespiratory fitness; TC, total cholesterol; TG, triglycerides; WMDs, weighted mean differences.

respectively) in people having at least 1 of type 2 diabetes, hypertension, hyperlipidemia, and metabolic syndrome (Tables 6 and 7, Figure 3); no such improvements were observed among people without any of those health conditions ($P=0.44$, $P=0.19$, and $P=0.13$, respectively) (Tables 6 and 7, Figure 3).

Sensitivity Analyses

In light of the potential impact of exercise intensity, we conducted separate analyses of all eligible comparisons for moderate and vigorous exercise interventions, respectively. The 95% CIs for moderate and vigorous interventions overlapped for both CRF measures and for all biomarkers (Table 8).

Discussion

This systematic review and meta-analysis of 160 RCTs involving 7487 participants indicates that exercise training may significantly improve CRF and CVD biomarkers of lipid and lipoprotein metabolism, glucose intolerance and insulin resistance, systemic inflammation, and hemostasis (Figure 4). In addition, we identified several important modifiers, including age, sex, and health status, that may partially modify the exercise effects on cardiovascular health.

The current meta-analysis shows that exercise, with relatively low risk of side effects compared with medications, may be an effective way to prevent CVD through impact on various biomarkers. Our results from the meta-analysis showed that exercise training significantly raised CRF, which

has been demonstrated to be an independent predictor of CVD risk, CVD mortality, and total mortality.^{200,201} Lower levels of triglycerides and higher levels of HDL-C were observed in exercise groups. Aside from conventional CVD biomarkers, our meta-analysis also examined the effects on biomarkers that have not been well studied in previous studies, including biomarkers of insulin resistance and hemostasis, adipokines, and novel lipid and inflammatory biomarkers. We found evidence supporting the favorable effects of exercise on apolipoprotein A1, interleukin-18, fasting insulin, HOMA-IR, and hemoglobin A1c. Although the exact biological mechanisms are not clear, our findings indicate that exercise may exert cardioprotective effects by altering dyslipidemia, inflammation, insulin resistance, and hemostasis.¹⁹

As a major component of HDL, apolipoprotein A1 plays an important role in the cardioprotective effects of HDL-C.^{202–204} Our findings on apolipoprotein A1 strengthen the hypothesis that exercise may accelerate reverse cholesterol transport. Another plausible mechanism by which exercise improves the lipid profile is by regulation of lipoprotein lipase. Various studies have suggested that exercise may decrease the levels of triglycerides and increase the levels of HDL-C through its impact on lipoprotein lipase expression and activity, which were consistent with the results from our meta-analysis.^{205–207} In addition, our analysis also confirmed that the proportion of CVD risk that could have been reduced by exercise via effects on total cholesterol and LDL-C is much lower than what has been observed previously.^{208,209} Consequently, the results from our meta-analysis provide additional evidence in support

Table 6. WMDs in Lipid Biomarkers Comparing Exercise Intervention and Control Groups by Specific Modifiers

Modifier	Total Cholesterol (mg/dL)					Total Triglycerides (mg/dL)				
	n	WMD	95% CI	I ² , %	P _{interaction} *	n	WMD	95% CI	I ² , %	P _{interaction}
Age, y										
<50	12	-4.25	-10.1 to 1.55	0.0	0.43	12	-6.20	-14.2 to 2.66	34.3	0.21
≥50	15	0.77	-5.41 to 7.35	72.5		13	1.77	-8.86 to 13.3	75.5	
Sex										
Women	28	1.16	-5.41 to 7.73	91.6	0.61	27	-1.77	-9.74 to 5.31	76.1	0.25
Men	15	-0.39	-5.80 to 5.03	54.3		13	-8.86	-14.2 to -4.43	12.8	
Lifestyle										
Active	6	8.12	-7.73 to 24.0	92.5	0.71	5	-8.86	-30.1 to 12.4	61.2	0.64
Sedentary	47	1.93	-13.9 to 17.4	99.1		43	-3.54	-9.74 to 2.66	75.1	
BMI[†]										
Obese	16	12.8	-22.4 to 47.6	99.7	0.20	19	-7.97	-14.2 to -1.77	53.0	0.70
Nonobese	29	-1.55	-7.73 to 4.25	83.6		28	-5.31	-14.2 to 4.43	80.7	
Health status[‡]										
Yes	10	-11.2	-19.3 to -3.48	75.2	0.04	9	-9.74	-26.6 to 6.20	63.9	0.48
None	47	-1.55	-5.41 to 2.32	81.6		44	-4.43	-11.5 to 2.66	75.2	
Duration, wk										
<16	39	3.87	-15.5 to 22.8	82.9	0.34	35	-6.20	-13.3 to 0.89	71.1	0.76
≥16	29	-3.09	-7.73 to 1.55	99.2		31	-5.31	-11.5 to 1.77	72.7	
Modifier	HDL-C (mg/dL)					LDL-C (mg/dL)				
	N	WMD	95% CI	I ² , %	P _{interaction} *	N	WMD	95% CI	I ² , %	P _{interaction}
Age, y										
<50	16	4.25	2.32 to 6.19	73.9	0.94	9	-3.87	-10.8 to 3.09	49.3	0.38
≥50	15	3.87	0.77 to 6.96	84.5		14	0.39	-5.03 to 6.19	73.0	
Sex										
Women	28	2.32	0.08 to 4.64	84.8	0.80	24	-1.93	-9.67 to 5.80	95.0	0.93
Men	19	2.71	0.39 to 5.03	92.5		13	-2.32	-8.89 to 4.25	79.7	
Lifestyle										
Active	5	4.25	0.39 to 8.51	86.9	0.52	2	8.12	-10.4 to 27.1	54.9	0.21
Sedentary	52	2.32	0.77 to 3.87	18.6		45	-3.87	-8.12 to 0.39	88.3	
BMI[†]										
Obese	19	4.25	1.93 to 6.96	88.1	0.13	14	-0.08	-4.64 to 4.25	62.0	0.33
Nonobese	30	1.16	-1.16 to 3.87	83.0		25	-4.25	-10.4 to 2.32	91.4	
Health status[‡]										
Yes	11	2.71	-2.32 to 7.73	91.2	0.89	12	-11.6	-19.7 to -3.09	80.8	0.06
None	50	2.32	0.77 to 3.87	87.3		39	-3.09	-7.73 to 1.55	89.3	
Duration, wk										
<16	39	2.71	1.16 to 4.64	83.0	0.55	29	-3.09	-9.28 to 3.48	89.6	0.63
≥16	35	1.93	0.15 to 0.28	90.4		30	-4.64	-10.4 to 1.16	92.2	

BMI indicates body mass index; HDL-C, high-density lipoprotein cholesterol; LDL-C, low-density lipoprotein cholesterol; WMDs, weighted mean differences.

*P values for the impact of potential modifiers on the exercise effects.

[†]BMI in kg/m²; obese ≥30; nonobese <30.

[‡]Health status: participants having at least 1 of type 2 diabetes, hypertension, hyperlipidemia, or metabolic syndrome (yes) vs those with none of them (none).

Table 7. WMDs in Biomarkers of Glucose Intolerance and Insulin Resistance Comparing Exercise Intervention Groups to Control Groups by Specific Modifiers

Modifier	Fasting Glucose (mmol/L)					Fasting Insulin (μIU/mL)				
	n	WMD	95% CI	I ² , %	P _{interaction} *	n	WMD	95% CI	I ² , %	P _{interaction}
Age, y										
<50	5	0.09	−0.11 to 0.29	91.3	0.57	4	−1.34	−3.44 to 0.76	76.9	0.22
≥50	7	0.01	−0.06 to 0.07	36.9		3	0.45	−1.23 to 2.13	75.6	
Sex										
Women	16	−0.06	−0.19 to 0.08	91.4	0.93	9	−0.27	−1.12 to 0.57	68.7	0.04
Men	9	−0.07	−0.25 to 0.12	84.3		6	−2.86	−3.55 to −2.17	0.0	
Lifestyle										
Active	2	−0.20	−0.74 to 0.34	99.0	0.63	0	NA	NA	NA	NA
Sedentary	29	−0.06	−0.16 to 0.03	80.2		17	−0.94	−1.75 to −0.13	78.5	
BMI[†]										
Obese	20	−0.06	−0.20 to 0.07	90.7	0.90	13	−0.93	−2.18 to 0.32	82.0	0.88
Nonobese	18	−0.05	−0.17 to 0.07	80.7		10	−0.86	−1.52 to −0.19	32.8	
Health status[‡]										
Yes	9	−0.18	−0.40 to 0.05	0.0	0.40	6	−2.68	−4.67 to −0.70	75.2	0.05
None	27	−0.03	−0.11 to 0.06	87.2		14	−0.70	−1.60 to 0.21	77.5	
Duration, wk										
<16	30	−0.10	−0.22 to 0.03	90.0	0.70	13	−1.35	−2.50 to −0.20	79.3	0.58
≥16	19	−0.02	−0.09 to 0.06	47.5		16	−0.83	−1.83 to 0.17	78.7	

BMI indicates body mass index; NA, not available due to the lack of comparisons reported for active participants; WMDs, weighted mean differences.

*P-values for the impact of potential modifiers on the exercise effects.

†BMI in kg/m²: obese ≥30; nonobese <30.

‡Health status: participants having at least 1 of type 2 diabetes, hypertension, hyperlipidemia, or metabolic syndrome (yes) vs those with none of them (none).

of the notion that, in addition to modifying total cholesterol and

LDL-C, exercise training may also affect cardiovascular health through other pathways. We found that people in exercise groups also had significantly lower levels of IL-18 and several biomarkers of insulin resistance and hemostatic factors, indicating that exercise may exert its effects via pathways of inflammation-characterized atherothrombosis and insulin resistance. A recent review suggested that exercise training may regulate white adipose tissue mass and the expression of adipokines.²¹⁰ Obesity has become widely regarded as a chronic proinflammatory state, and substantial evidence indicates that chronic inflammation in adipose tissues, especially in white adipose tissue, could lead to insulin resistance.^{211,212} Consequently, it is biologically plausible that by reducing the white adipose tissue mass and regulating the expression of adipokines, exercise could mitigate the chronic inflammation in adipose tissues, resulting in improved insulin sensitivity. Nevertheless, the exact mechanism remains to be elucidated.

The results from the subgroup analyses also may have important clinical implications. Consistent with previous evidence,²¹³ both moderate and vigorous exercise training

appeared to have favorable effects on cardiorespiratory fitness and cardiometabolic health. We found that the differences in CVD risk between exercise groups and control groups were not significantly modified by lifestyle, body mass index, or intervention duration. These findings suggest that exercise interventions may have similar effects on cardiovascular health in populations regardless of these factors. Alternatively, the effectiveness of exercise training appeared to be different across strata of age, sex, and health status. The effects of exercise interventions on CRF measures were modified by age, sex, and health status such that people aged <50 years, men, and people with type 2 diabetes, hypertension, hyperlipidemia, or metabolic syndrome appeared to benefit more from exercise interventions. We also observed significant modification of the effects on total cholesterol and LDL-C by preexisting medical conditions (type 2 diabetes, hypertension, hyperlipidemia, or metabolic syndromes), and that may explain why we did not find significant effects of exercise on total cholesterol and LDL-C. This finding also suggests that exercise interventions may provide significant benefits for people with those preexisting conditions by lowering total cholesterol and LDL-C.

Table 8. WMDs in Cardiorespiratory Fitness and Circulating Concentrations of Biomarkers Comparing Moderate and Vigorous Exercise Intervention Groups to Control Groups

Outcome	Moderate			Vigorous		
	No.*	WMD	95% CI	No.*	WMD	95% CI
Cardiorespiratory fitness						
Absolute, L/min	39	0.22	0.16 to 0.29	33	0.31	0.22 to 0.40
Relative, mL/kg per minute	64	3.22	2.61 to 4.18	68	3.26	2.63 to 3.89
Lipids markers						
TC, mg/dL	41	4.25	−7.73 to 16.6	28	3.87	−31.7 to 39.8
TG, mg/dL	37	−5.31	−12.4 to 1.77	32	−5.31	−11.5 to 0.09
HDL-C, mg/dL	44	1.16	−0.39 to 2.71	33	2.71	0.39 to 5.03
HDL ₂ -C, mg/dL	2	1.16	−0.77 to 3.48	2	1.55	−1.16 to 4.25
HDL ₃ -C, mg/dL	1	−1.16	−5.80 to 3.87	2	0.04	−1.55 to 1.55
LDL-C, mg/dL	35	−3.09	−8.12 to 2.32	26	−4.64	−12.0 to 2.32
VLDL-C, mg/dL	5	−1.93	−5.41 to 1.93	2	−7.35	−22.9 to 6.19
Apo A1, g/L	4	0.03	0.02 to 0.04	1	0.00	−0.12 to 0.12
Apo AII, g/L	1	−0.001	−0.24 to 0.24	1	0.01	−0.01 to 0.03
Apo B, g/L	3	0.01	−0.01 to 0.03	2	−0.02	−0.21 to 0.18
FFA, mmol/L	5	−0.06	−0.16 to 0.03	3	−0.04	−0.17 to 0.10
Inflammatory markers						
CRP, mg/L	9	−0.23	−1.01 to 0.55	4	0.04	−0.24 to 0.31
IL-6, pg/mL	5	0.02	−0.22 to 0.25	2	−0.39	−0.83 to 0.06
IL-18, pg/mL	1	14.0	−128 to 156	1	18.4	0.02 to 36.8
TNF- α , pg/mL	3	0.06	−0.48 to 0.60	1	−0.01	−0.93 to 0.91
Adiponectin, μ g/mL	1	3.52	1.17 to 5.87	6	0.52	−0.20 to 1.23
Leptin, ng/mL	1	−0.70	−1.19 to −0.21	6	−2.56	−4.04 to −1.08
Insulin resistance markers						
Glucose, mmol/L	31	−0.04	−0.24 to 0.17	22	0.03	−0.08 to 0.12
Insulin, μ IU/mL	17	−0.91	−2.08 to 0.26	17	−1.32	−2.15 to −0.50
HOMA-IR	7	−0.30	−0.66 to 0.06	7	−0.47	−0.82 to −0.12
HbA1c, %	11	−0.28	−0.46 to −0.11	7	−2.71	−0.54 to −0.002
C-peptide, nmol/L	1	0.22	0.19 to 0.25	1	−0.18	−0.62 to 0.26
IGF-1, ng/mL	2	−4.64	−29.58 to 20.30	3	3.91	−2.87 to 10.69
IGF-BP3, μ g/mL	0	NA	NA	2	−0.002	−0.23 to 0.23
Hemostatic factors						
Fibrinogen, g/L	0	NA	NA	2	−0.39	−0.75 to −0.03
Endothelin-1, pg/mL	2	−0.22	−0.62 to 0.19	0	NA	NA
Angiotensin II, pg/mL	2	−1.32	−2.11 to −0.54	0	NA	NA

Apo A1 indicates apolipoprotein A1; Apo AII, apolipoprotein A2; Apo B, apolipoprotein B; CRP, C-reactive protein; FFA, free fatty acid; HbA1c, glycosylated hemoglobin A1c; HDL-C, high-density lipoprotein cholesterol; HOMA-IR, homeostatic model assessment–insulin resistance; IGF-1, insulin-like growth factor 1; IGF-BP3, insulin-like growth factor binding protein 3; IL, interleukin; LDL-C, low-density lipoprotein cholesterol; NA, not available due to the lack of comparisons reported; TC, total cholesterol; TG, triglycerides; TNF- α , tumor necrosis factor α ; VLDL-C, very low-density lipoprotein cholesterol; WMDs, weighted mean differences.

*Number of eligible independent comparisons.

Strengths of this meta-analysis include the comprehensive and systematic review of both conventional and novel CVD biomarkers, detailed subgroup analyses for potential effect

modifiers that have not been conducted previously, assessment of robustness with regard to exercise intensity, and evaluation of the risk of different bias. The 2008 Physical

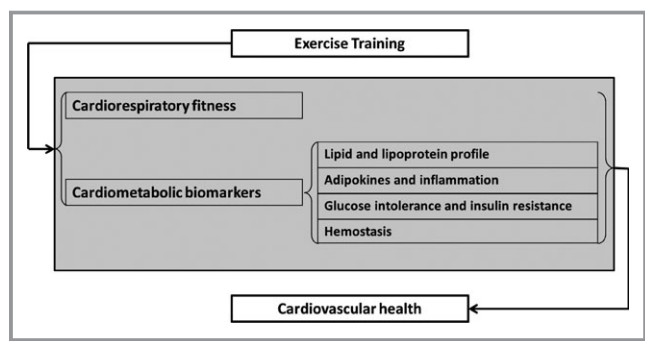


Figure 4. Mechanisms by which exercise training may improve cardiovascular health.

Activity Guidelines Advisory Committee Report included a number of comprehensively systematic reviews and meta-analyses based mostly on observational studies.²¹⁴ The evidence from RCTs has been relatively scarce, especially for novel cardiometabolic biomarkers. Our study is the first that synthesized evidence from the RCT setting and covered a comprehensive set of both traditional and novel biomarkers. Our findings are corroborated by several previous meta-analyses of RCTs,^{20,215} but the inclusion of both sexes, more studies, subgroup analyses, and sensitivity analyses allowed us to achieve higher precision in the estimates and to determine the effect modification in subgroups.

This meta-analysis had some limitations. First, the evidence for hemostatic factors is based on a limited number of available trials, and we were not able to synthesize evidence for some novel biomarkers, such as plasminogen activator inhibitor 1, lipoprotein(a), and homocysteine due to sparse available data. Second, subgroup analyses were restricted to outcomes with >20 studies included, and cutoff points used for categorizing modifiers were arbitrarily selected. Third, due to the heterogeneity of exercise training programs and the limited number of RCTs that provided separate data, this meta-analysis can neither perform a dose-response analysis nor distinguish exercise types. We maximized the utility of data regarding exercise duration and intensity available from original RCTs and found that exercise effects were not significantly different across subgroups defined by duration and intensity. Our findings are consistent with previous evidence showing that both moderate and vigorous exercise training has similarly favorable effects on cardiometabolic health.²¹³ The duration threshold at which exercise exerts its effects needs further investigation. Fourth, to maintain independence, we selected 1 comparison from each trial with exercise groups of different intensities compared with 1 single control group. The results may potentially be subject to bias by excluding several eligible intervention groups with moderate intensity; however, we found that the direction and magnitude of the effects on most of the outcome measures

were quite similar between moderate and vigorous interventions (Table 8). Finally, like any meta-analysis, our results may be prone to publication bias and inherent weaknesses of individual studies.

In conclusion, this large meta-analysis of RCTs clearly shows that exercise training significantly improved CRF and some traditional and novel CVD biomarkers in adults without CVD, indicating the causal role of exercise in the primary prevention of CVD morbidity and mortality.

Acknowledgments

Author contributions: Lin, Liu, and Song designed research; Lin and Zhang were involved in data collection; Lin analyzed data; Guo, Roberts, McKenzie, Wu, and Liu participated in interpretation of findings; Lin and Song wrote the first draft. All authors read, edited, and approved the final manuscript.

Sources of Funding

The study was supported by the Indiana University Health–Indiana University School of Medicine Strategic Research Initiative Grant (Zhang and Song), R01DK09406 (Roberts) and P50HL105188 (Roberts) from the National Institutes of Health (NIH), and Brown University. The NIH, Brown University, or Indiana University had no role in the design and conduct of the study; the collection, management, analysis, and interpretation of the data; or the preparation, review, or approval of the manuscript.

Disclosures

None.

References

- Go AS, Mozaffarian D, Roger VL, Benjamin EJ, Berry JD, Blaha MJ, Dai S, Ford ES, Fox CS, Franco S, Fullerton HJ, Gillespie C, Hailpern SM, Heit JA, Howard VJ, Huffman MD, Judd SE, Kissela BM, Kittner SJ, Lackland DT, Lichtman JH, Lisabeth LD, Mackey RH, Magid DJ, Marcus GM, Marelli A, Matchar DB, McGuire DK, Mohler ER III, Moy CS, Mussolino ME, Neumar RW, Nichol G, Pandey DK, Paynter NP, Reeves MJ, Sorlie PD, Stein J, Towfighi A, Turan TN, Virani SS, Wong ND, Woo D, Turner MB. Heart disease and stroke statistics—2014 update: a report from the American Heart Association. *Circulation*. 2014;129:e28–e292.
- Jones DS, Greene JA. The decline and rise of coronary heart disease: understanding public health catastrophism. *Am J Public Health*. 2013;103:1207–1218.
- Lackland DT, Roccella EJ, Deutsch AF, Fornage M, George MG, Howard G, Kissela BM, Kittner SJ, Lichtman JH, Lisabeth LD, Schwamm LH, Smith EE, Towfighi A. Factors influencing the decline in stroke mortality: a statement from the American Heart Association/American Stroke Association. *Stroke*. 2014;45:315–353.
- McGuire S. U.S. Department of Agriculture and U.S. Department of Health and Human Services, Dietary Guidelines for Americans, 2010. 7th edition, Washington, DC: U.S. Government Printing Office, January 2011. *Adv Nutr*. 2011;2:293–294.
- Pearson TA, Blair SN, Daniels SR, Eckel RH, Fair JM, Fortmann SP, Franklin BA, Goldstein LB, Greenland P, Grundy SM, Hong Y, Miller NH, Lauer RM,

- Ockene IS, Sacco RL, Sallis JF Jr, Smith SC Jr, Stone NJ, Taubert KA. AHA guidelines for primary prevention of cardiovascular disease and stroke: 2002 update: consensus panel guide to comprehensive risk reduction for adult patients without coronary or other atherosclerotic vascular diseases. American Heart Association Science Advisory and Coordinating Committee. *Circulation*. 2002;106:388–391.
6. Smith SC Jr, Benjamin EJ, Bonow RO, Braun LT, Creager MA, Franklin BA, Gibbons RJ, Grundy SM, Hiratzka LF, Jones DW, Lloyd-Jones DM, Minissian M, Mosca L, Peterson ED, Sacco RL, Spertus J, Stein JH, Taubert KA. AHA/ACC secondary prevention and risk reduction therapy for patients with coronary and other atherosclerotic vascular disease: 2011 update: a guideline from the American Heart Association and American College of Cardiology Foundation. *Circulation*. 2011;124:2458–2473.
 7. Berlin JA, Colditz GA. A meta-analysis of physical activity in the prevention of coronary heart disease. *Am J Epidemiol*. 1990;132:612–628.
 8. Berry JD, Pandey A, Gao A, Leonard D, Farzaneh-Far R, Ayers C, DeFina L, Willis B. Physical fitness and risk for heart failure and coronary artery disease. *Circ Heart Fail*. 2013;6:627–634.
 9. Faulkner J, Lambrick D, Woolley B, Stoner L, Wong L-K, McGonigal G. Health-enhancing physical activity programme (HEPAP) for transient ischaemic attack and non-disabling stroke: recruitment and compliance. *N Z Med J*. 2012;125:68–76.
 10. Alter DA, Oh PI, Chong A. Relationship between cardiac rehabilitation and survival after acute cardiac hospitalization within a universal health care system. *Eur J Cardiovasc Prev Rehabil*. 2009;16:102–113.
 11. Niebauer J, Clark AL, Webb-Peploe KM, Coats AJ. Exercise training in chronic heart failure: effects on pro-inflammatory markers. *Eur J Heart Fail*. 2005;7:189–193.
 12. Williams MA, Ades PA, Hamm LF, Keteyian SJ, LaFontaine TP, Roitman JL, Squires RW. Clinical evidence for a health benefit from cardiac rehabilitation: an update. *Am Heart J*. 2006;152:835–841.
 13. Gupta S, Rohatgi A, Ayers CR, Willis BL, Haskell WL, Khera A, Drazner MH, de Lemos JA, Berry JD. Cardiorespiratory fitness and classification of risk of cardiovascular disease mortality. *Circulation*. 2011;123:1377–1383.
 14. Laukkanen JA, Laaksonen D, Lakka TA, Savonen K, Rauramaa R, Makikallio T, Kurl S. Determinants of cardiorespiratory fitness in men aged 42 to 60 years with and without cardiovascular disease. *Am J Cardiol*. 2009;103:1598–1604.
 15. Lee DC, Artero EG, Sui X, Blair SN. Mortality trends in the general population: the importance of cardiorespiratory fitness. *J Psychopharmacol*. 2010;24:27–35.
 16. Pischon T, Girman CJ, Sacks FM, Rifai N, Stampfer MJ, Rimm EB. Non-high-density lipoprotein cholesterol and apolipoprotein B in the prediction of coronary heart disease in men. *Circulation*. 2005;112:3375–3383.
 17. Greenland P, LaBree L, Azen SP, Doherty TM, Detrano RC. Coronary artery calcium score combined with Framingham score for risk prediction in asymptomatic individuals. *JAMA*. 2004;291:210–215.
 18. Smith SC Jr, Anderson JL, Cannon RO III, Fadi YY, Koenig W, Libby P, Lipshultz SE, Mensah GA, Ridker PM, Rosenson R. CDC/AHA workshop on markers of inflammation and cardiovascular disease: application to clinical and public health practice: report from the clinical practice discussion group. *Circulation*. 2004;110:e550–e553.
 19. Vasan RS. Biomarkers of cardiovascular disease: molecular basis and practical considerations. *Circulation*. 2006;113:2335–2362.
 20. Swardfager W, Herrmann N, Cornish S, Mazereeuw G, Marzolini S, Sham L, Lanctot KL. Exercise intervention and inflammatory markers in coronary artery disease: a meta-analysis. *Am Heart J*. 2012;163:666–676.e661–663.
 21. Lavie CJ, Church TS, Milani RV, Earnest CP. Impact of physical activity, cardiorespiratory fitness, and exercise training on markers of inflammation. *J Cardiopulm Rehabil Prev*. 2011;31:137–145.
 22. Patel N, Taveira TH, Choudhary G, Whittlatch H, Wu WC. Fasting serum C-peptide levels predict cardiovascular and overall death in nondiabetic adults. *J Am Heart Assoc*. 2012;1:e003152 doi: 10.1161/JAHA.112.003152.
 23. van Holten TC, Waanders LF, de Groot PG, Vissers J, Hoefler IE, Pasterkamp G, Prins MW, Roest M. Circulating biomarkers for predicting cardiovascular disease risk; a systematic review and comprehensive overview of meta-analyses. *PLoS One*. 2013;8:e62080.
 24. Mottillo S, Filion KB, Genest J, Joseph L, Pilote L, Poirier P, Rinfret S, Schiffrin EL, Eisenberg MJ. The metabolic syndrome and cardiovascular risk: a systematic review and meta-analysis. *J Am Coll Cardiol*. 2010;56:1113–1132.
 25. Robins SJ, Lyass A, Zachariah JP, Massaro JM, Vasan RS. Insulin resistance and the relationship of a dyslipidemia to coronary heart disease: the Framingham Heart Study. *Arterioscler Thromb Vasc Biol*. 2011;31:1208–1214.
 26. Lazzeri C, Sori A, Chiostrì M, Gensini GF, Valente S. Prognostic role of insulin resistance as assessed by homeostatic model assessment index in the acute phase of myocardial infarction in nondiabetic patients submitted to percutaneous coronary intervention. *Eur J Anaesthesiol*. 2009;26:856–862.
 27. Kelley GA, Kelley KS. Effects of aerobic exercise on C-reactive protein, body composition, and maximum oxygen consumption in adults: a meta-analysis of randomized controlled trials. *Metabolism*. 2006;55:1500–1507.
 28. Moher D, Liberati A, Tetzlaff J, Altman DG. Preferred reporting items for systematic reviews and meta-analyses: the PRISMA statement. *J Clin Epidemiol*. 2009;62:1006–1012.
 29. Higgins JP, Altman DG, Gotsche PC, Juni P, Moher D, Oxman AD, Savovic J, Schulz KF, Weeks L, Sterne JA. The cochrane collaboration's tool for assessing risk of bias in randomised trials. *BMJ*. 2011;343:d5928.
 30. DerSimonian R, Laird N. Meta-analysis in clinical trials. *Control Clin Trials*. 1986;7:177–188.
 31. Cochran WG. The combination of estimates from different experiments. *Biometrics*. 1954;10:101–129.
 32. Higgins JP, Thompson SG. Quantifying heterogeneity in a meta-analysis. *Stat Med*. 2002;21:1539–1558.
 33. Egger M, Davey Smith G, Schneider M, Minder C. Bias in meta-analysis detected by a simple, graphical test. *BMJ*. 1997;315:629–634.
 34. Duval S, Tweedie R. Trim and fill: a simple funnel-plot-based method of testing and adjusting for publication bias in meta-analysis. *Biometrics*. 2000;56:455–463.
 35. Sterne JA, Gavaghan D, Egger M. Publication and related bias in meta-analysis: power of statistical tests and prevalence in the literature. *J Clin Epidemiol*. 2000;53:1119–1129.
 36. Ben Abderrahman A, Zouhal H, Chamari K, Thevenet D, de Mullenheim P-Y, Gastinger S, Tabka Z, Prioux J. Effects of recovery mode (active vs. passive) on performance during a short high-intensity interval training program: a longitudinal study. *Eur J Appl Physiol*. 2013;113:1373–1383.
 37. Ahmadi S, Masse-Biron J, Adam B, Choquet D, Freville M, Libert JP, Prefaut C. Effects of interval training at the ventilatory threshold on clinical and cardiorespiratory responses in elderly humans. *Eur J Appl Physiol*. 1998;78:170–176.
 38. Aldred HE, Hardman AE, Taylor S. Influence of 12 weeks of training by brisk walking on postprandial lipemia and insulinemia in sedentary middle-aged women. *Metabolism*. 1995;44:390–397.
 39. Ashutosh K, Methrotra K, Fragale-Jackson J. Effects of sustained weight loss and exercise on aerobic fitness in obese women. *J Sports Med Phys Fitness*. 1997;37:252–257.
 40. Asikainen TM, Miilunpalo S, Oja P, Rinne M, Pasanen M, Uusi-Rasi K, Vuori I. Randomised, controlled walking trials in postmenopausal women: the minimum dose to improve aerobic fitness? *Br J Sports Med*. 2002;36:189–194.
 41. Baker TT, Allen D, Lei KY, Willcox KK. Alterations in lipid and protein profiles of plasma lipoproteins in middle-aged men consequent to an aerobic exercise program. *Metabolism*. 1986;35:1037–1043.
 42. Balducci S, Zanuso S, Nicolucci A, De Feo P, Cavallo S, Cardelli P, Fallucca S, Alessi E, Fallucca F, Pugliese G; Italian Diabetes Exercise Study I. Effect of an intensive exercise intervention strategy on modifiable cardiovascular risk factors in subjects with type 2 diabetes mellitus: a randomized controlled trial: the Italian Diabetes and Exercise Study (IDES). *Arch Intern Med*. 2010;170:1794–1803.
 43. Beavers KM, Hsu F-C, Isom S, Kritchevsky SB, Church T, Goodpaster B, Pahor M, Nicklas BJ. Long-term physical activity and inflammatory biomarkers in older adults. *Med Sci Sports Exerc*. 2010;42:2189–2196.
 44. Bell GJ, Harber V, Murray T, Courneya KS, Rodgers W. A comparison of fitness training to a pedometer-based walking program matched for total energy cost. *J Phys Act Health*. 2010;7:203–213.
 45. Bermon S, Ferrari P, Bernard P, Altare S, Dolisi C. Responses of total and free insulin-like growth factor-I and insulin-like growth factor binding protein-3 after resistance exercise and training in elderly subjects. *Acta Physiol Scand*. 1999;165:51–56.
 46. Biddle MG, Vincent G, McCambridge A, Britton G, Dewes O, Elley CR, Moyes SA, Edge J. Randomised controlled trial of informal team sports for cardiorespiratory fitness and health benefit in pacific adults. *J Prim Health Care*. 2011;3:269–277.
 47. Blumenthal JA, Emery CF, Madden DJ, Schniebolk S, Riddle MW, Cobb FR, Higginbotham M, Coleman RE. Effects of exercise training on bone density in older men and women. *J Am Geriatr Soc*. 1991;39:1065–1070.
 48. Blumenthal JA, Emery CF, Madden DJ, Schniebolk S, Walsh-Riddle M, George LK, McKee DC, Higginbotham MB, Cobb FR, Coleman RE. Long-term effects

- of exercise on psychological functioning in older men and women. *J Gerontol*. 1991;46:P352–P361.
49. Boardley D, Fahlman M, Topp R, Morgan AL, McNevin N. The impact of exercise training on blood lipids in older adults. *Am J Geriatr Cardiol*. 2007;16:30–35.
 50. Bobeuf F, Labonte M, Dionne IJ, Khalil A. Combined effect of antioxidant supplementation and resistance training on oxidative stress markers, muscle and body composition in an elderly population. *J Nutr Health Aging*. 2011;15:883–889.
 51. Boreham CA, Wallace WF, Nevill A. Training effects of accumulated daily stair-climbing exercise in previously sedentary young women. *Prev Med*. 2000;30:277–281.
 52. Boudou P, Sobngwi E, Mauvais-Jarvis F, Vexiau P, Gautier JF. Absence of exercise-induced variations in adiponectin levels despite decreased abdominal adiposity and improved insulin sensitivity in type 2 diabetic men. *Eur J Endocrinol*. 2003;149:421–424.
 53. Bourque SP, Pate RR, Branch JD. Twelve weeks of endurance exercise training does not affect iron status measures in women. *J Am Diet Assoc*. 1997;97:1116–1121.
 54. Braith RW, Pollock ML, Lowenthal DT, Graves JE, Limacher MC. Moderate- and high-intensity exercise lowers blood pressure in normotensive subjects 60 to 79 years of age. *Am J Cardiol*. 1994;73:1124–1128.
 55. Broeder CE, Burrhus KA, Svanevik LS, Wilmore JH. The effects of either high-intensity resistance or endurance training on resting metabolic rate. *Am J Clin Nutr*. 1992;55:802–810.
 56. Broman G, Quintana M, Lindberg T, Jansson E, Kaijser L. High intensity deep water training can improve aerobic power in elderly women. *Eur J Appl Physiol*. 2006;98:117–123.
 57. Burr JF, Jamnik VK, Gledhill N. Physiological fitness and health adaptations from purposeful training using off-road vehicles. *Eur J Appl Physiol*. 2011;111:1841–1850.
 58. Camargo MD, Stein R, Ribeiro JP, Schwartzman PR, Rizzatti MO, Schaan BD. Circuit weight training and cardiac morphology: a trial with magnetic resonance imaging. *Br J Sports Med*. 2008;42:141–145; discussion 145.
 59. Campbell KL, Westerlind KC, Harber VJ, Bell GJ, Mackey JR, Courneya KS. Effects of aerobic exercise training on estrogen metabolism in premenopausal women: a randomized controlled trial. *Cancer Epidemiol Biomark Prev*. 2007;16:731–739.
 60. Canuto K, Cargo M, Li M, D'Onise K, Esterman A, McDermott R. Pragmatic randomised trial of a 12-week exercise and nutrition program for Aboriginal and Torres Strait Islander women: clinical results immediate post and 3 months follow-up. *BMC Public Health*. 2012;12:933.
 61. Carroll S, Marshall P, Ingle L, Borkoles E. Cardiorespiratory fitness and heart rate recovery in obese premenopausal women. *Scand J Med Sci Sports*. 2012;22:e133–e139.
 62. Chan L, Chin LMK, Kennedy M, Woolstenhulme JG, Nathan SD, Weinstein AA, Connors G, Weir NA, Drinkard B, Lambert J, Keyser RE. Benefits of intensive treadmill exercise training on cardiorespiratory function and quality of life in patients with pulmonary hypertension. *Chest*. 2013;143:333–343.
 63. Chandler WL, Schwartz RS, Stratton JR, Vitiello MV. Effects of endurance training on the circadian rhythm of fibrinolysis in men and women. *Med Sci Sports Exerc*. 1996;28:647–655.
 64. Cho JK, Lee SH, Lee JY, Kang HS. Randomized controlled trial of training intensity in adiposity. *Int J Sports Med*. 2011;32:468–475.
 65. Christiansen T, Paulsen SK, Bruun JM, Ploug T, Pedersen SB, Richelsen B. Diet-induced weight loss and exercise alone and in combination enhance the expression of adiponectin receptors in adipose tissue and skeletal muscle, but only diet-induced weight loss enhanced circulating adiponectin. *J Clin Endocrinol Metab*. 2010;95:911–919.
 66. Church TS, Earnest CP, Skinner JS, Blair SN. Effects of different doses of physical activity on cardiorespiratory fitness among sedentary, overweight or obese postmenopausal women with elevated blood pressure: a randomized controlled trial. *JAMA*. 2007;297:2081–2091.
 67. Ciolac EG, Bocchi EA, Greve JMD, Guimaraes GV. Heart rate response to exercise and cardiorespiratory fitness of young women at high familial risk for hypertension: effects of interval vs continuous training. *Eur J Cardiovasc Prev Rehabil*. 2011;18:824–830.
 68. Coker RH, Williams RH, Kortebein PM, Sullivan DH, Evans WJ. Influence of exercise intensity on abdominal fat and adiponectin in elderly adults. *Metab Syndr Relat Disord*. 2009;7:363–368.
 69. Cortez-Cooper MY, Anton MM, Devan AE, Neidre DB, Cook JN, Tanaka H. The effects of strength training on central arterial compliance in middle-aged and older adults. *Eur J Cardiovasc Prev Rehabil*. 2008;15:149–155.
 70. Cox KL, Puddey IB, Morton AR, Beilin LJ, Vandongen R, Masarei JR. The combined effects of aerobic exercise and alcohol restriction on blood pressure and serum lipids: a two-way factorial study in sedentary men. *J Hypertens*. 1993;11:191–201.
 71. Cox KL, Burke V, Morton AR, Beilin LJ, Puddey IB. The independent and combined effects of 16 weeks of vigorous exercise and energy restriction on body mass and composition in free-living overweight men—a randomized controlled trial. *Metabolism*. 2003;52:107–115.
 72. Dalleck LC, Allen BA, Hanson BA, Borresen EC, Erickson ME, De Lap SL. Dose-response relationship between moderate-intensity exercise duration and coronary heart disease risk factors in postmenopausal women. *J Womens Health (Larchmt)*. 2009;18:105–113.
 73. De Vito G, Bernardi M, Forte R, Pulejo C, Figura F. Effects of a low-intensity conditioning programme on $\dot{V}O_{2max}$ and maximal instantaneous peak power in elderly women. *Eur J Appl Physiol*. 1999;80:227–232.
 74. Dimeo F, Pagonas N, Seibert F, Arndt R, Zidek W, Westhoff TH. Aerobic exercise reduces blood pressure in resistant hypertension. *Hypertension*. 2012;60:653–658.
 75. DiPietro L, Dziura J, Yeckel CW, Neuffer PD. Exercise and improved insulin sensitivity in older women: evidence of the enduring benefits of higher intensity training. *J Appl Physiol*. 2006;100:142–149.
 76. Duncan JJ, Gordon NF, Scott CB. Women walking for health and fitness. How much is enough? *JAMA*. 1991;266:3295–3299.
 77. Duscha BD, Slentz CA, Johnson JL, Houmard JA, Bensimhon DR, Knetzger KJ, Kraus WE. Effects of exercise training amount and intensity on peak oxygen consumption in middle-age men and women at risk for cardiovascular disease. *Chest*. 2005;128:2788–2793.
 78. Eguchi Y, Ohta M, Inoue T, Honda T, Morita Y, Konno Y, Yamato H. Effects of transitory stimulation interval exercise on physical function: a randomized controlled pilot study among Japanese subjects. *J UOEH*. 2012;34:297–308.
 79. Fatouros IG, Tournis S, Leontini D, Jamurtas AZ, Sxina M, Thomakos P, Manousaki M, Douroudos I, Taxildaris K, Mitrakou A. Leptin and adiponectin responses in overweight inactive elderly following resistance training and detraining are intensity related. *J Clin Endocrinol Metab*. 2005;90:5970–5977.
 80. Finucane FM, Sharp SJ, Purlow LR, Horton K, Horton J, Savage DB, Brage S, Besson H, De Lucia Rolfe E, Sleigh A, Martin HJ, Aihie SAYER A, Cooper C, Ekelund U, Griffin SJ, Wareham NJ. The effects of aerobic exercise on metabolic risk, insulin sensitivity and intrahepatic lipid in healthy older people from the hertfordshire cohort study: a randomised controlled trial. *Diabetologia*. 2010;53:624–631.
 81. Friedenreich CM, Neilson HK, Woolcott CG, McTiernan A, Wang Q, Ballard-Barbash R, Jones CA, Stanczyk FZ, Brant RF, Yasui Y, Irwin ML, Campbell KL, McNeely ML, Karvinen KH, Courneya KS. Changes in insulin resistance indicators, IGFs, and adipokines in a year-long trial of aerobic exercise in postmenopausal women. *Endocr Relat Cancer*. 2011;18:357–369.
 82. Garber CE, McKinney JS, Carleton RA. Is aerobic dance an effective alternative to walk-jog exercise training? *J Sports Med Phys Fitness*. 1992;32:136–141.
 83. Georgiades A, Sherwood A, Gullette EC, Babyak MA, Hinderliter A, Waugh R, Tweedy D, Craighead L, Bloomer R, Blumenthal JA. Effects of exercise and weight loss on mental stress-induced cardiovascular responses in individuals with high blood pressure. *Hypertension*. 2000;36:171–176.
 84. Gormley SE, Swain DP, High R, Spina RJ, Dowling EA, Kotipalli US, Gandrakota R. Effect of intensity of aerobic training on $\dot{V}O_{2max}$. *Med Sci Sports Exerc*. 2008;40:1336–1343.
 85. Gram B, Christensen R, Christiansen C, Gram J. Effects of nordic walking and exercise in type 2 diabetes mellitus: a randomized controlled trial. *Clin J Sport Med*. 2010;20:355–361.
 86. Grandjean PW, Oden GL, Crouse SF, Brown JA, Green JS. Lipid and lipoprotein changes in women following 6 months of exercise training in a worksite fitness program. *J Sports Med Phys Fitness*. 1996;36:54–59.
 87. Gray SR, Baker G, Wright A, Fitzsimons CF, Mutrie N, Nimmo MA; Scottish Physical Activity Research C. The effect of a 12 week walking intervention on markers of insulin resistance and systemic inflammation. *Prev Med*. 2009;48:39–44.
 88. Guadalupe-Grau A, Perez-Gomez J, Olmedillas H, Chavarren J, Dorado C, Santana A, Serrano-Sanchez JA, Calbet JAL. Strength training combined with plyometric jumps in adults: sex differences in fat-bone axis adaptations. *J Appl Physiol*. 2009;106:1100–1111.
 89. Hagan RD, Upton SJ, Wong L, Whittam J. The effects of aerobic conditioning and/or caloric restriction in overweight men and women. *Med Sci Sports Exerc*. 1986;18:87–94.

90. Hass CJ, Garzarella L, de Hoyos DV, Connaughton DP, Pollock ML. Concurrent improvements in cardiorespiratory and muscle fitness in response to total body recumbent stepping in humans. *Eur J Appl Physiol*. 2001;85:157–163.
91. Hendrickson NR, Sharp MA, Alemany JA, Walker LA, Harman EA, Spiering BA, Hatfield DL, Yamamoto LM, Maresh CM, Kraemer WJ, Nindl BC. Combined resistance and endurance training improves physical capacity and performance on tactical occupational tasks. *Eur J Appl Physiol*. 2010;109:1197–1208.
92. Heydari M, Boutcher YN, Boutcher SH. High-intensity intermittent exercise and cardiovascular and autonomic function. *Clin Auton Res*. 2013;23:57–65.
93. Hilberg T, Menzel K, Wehmeier UF. Endurance training modifies exercise-induced activation of blood coagulation: RCT. *Eur J Appl Physiol*. 2013;113:1423–1430.
94. Hiruntrakul A, Nanagara R, Emasithi A, Borer KT. Effect of once a week endurance exercise on fitness status in sedentary subjects. *J Med Assoc Thai*. 2010;93:1070–1074.
95. Ho SS, Dhaliwal SS, Hills AP, Pal S. The effect of 12 weeks of aerobic, resistance or combination exercise training on cardiovascular risk factors in the overweight and obese in a randomized trial. *BMC Public Health*. 2012;12:704.
96. Hu M, Finni T, Zou L, Perhonen M, Sedliak M, Alen M, Cheng S. Effects of strength training on work capacity and parasympathetic heart rate modulation during exercise in physically inactive men. *Int J Sports Med*. 2009;30:719–724.
97. Huttunen JK, Lansimies E, Voutilainen E, Ehnholm C, Hietanen E, Penttila I, Siitonen O, Rauramaa R. Effect of moderate physical exercise on serum lipoproteins. A controlled clinical trial with special reference to serum high-density lipoproteins. *Circulation*. 1979;60:1220–1229.
98. Tsuji I, Tamagawa A, Nagatomi R, Irie N, Ohkubo T, Saito M, Fujita K, Ogawa K, Sauvaget C, Anzai Y, Hozawa A, Watanabe Y, Sato A, Ohmori H, Hisamichi S. Randomized controlled trial of exercise training for older people (Sendai Silver Center Trial; SSCT): study design and primary outcome. *J Epidemiol*. 2000;10:55–64.
99. Irwin MR, Olmstead R. Mitigating cellular inflammation in older adults: a randomized controlled trial of Tai Chi Chih. *Am J Geriatr Psychiatry*. 2012;20:764–772.
100. Larose J, Sigal RJ, Khandwala F, Prud'homme D, Boule NG, Kenny GP; Diabetes A, Resistance Exercise trial I. Associations between physical fitness and HbA1(c) in type 2 diabetes mellitus. *Diabetologia*. 2011;54:93–102.
101. Jessup JV, Lowenthal DT, Pollock ML, Turner T. The effects of endurance exercise training on ambulatory blood pressure in normotensive older adults. *Geriatr Nephrol Urol*. 1998;8:103–109.
102. Kadoglou NPE, Vrabas IS, Kapelouzou A, Angelopoulou N. The association of physical activity with novel adipokines in patients with type 2 diabetes. *Eur J Intern Med*. 2012;23:137–142.
103. Karstoft K, Winding K, Knudsen SH, Nielsen JS, Thomsen C, Pedersen BK, Solomon TPJ. The effects of free-living interval-walking training on glycemic control, body composition, and physical fitness in type 2 diabetic patients: a randomized, controlled trial. *Diabetes Care*. 2013;36:228–236.
104. King AC, Taylor CB, Haskell WL, DeBusk RF. Influence of regular aerobic exercise on psychological health: a randomized, controlled trial of healthy middle-aged adults. *Health Psychol*. 1989;8:305–324.
105. Kirk EP, Jacobsen DJ, Gibson C, Hill JO, Donnelly JE. Time course for changes in aerobic capacity and body composition in overweight men and women in response to long-term exercise: the Midwest Exercise Trial (MET). *Int J Obes Relat Metab Disord*. 2003;27:912–919.
106. Kiviniemi AM, Hautala AJ, Kinnunen H, Tulppo MP. Endurance training guided individually by daily heart rate variability measurements. *Eur J Appl Physiol*. 2007;101:743–751.
107. Kokkinos PF, Narayan P, Collieran J, Fletcher RD, Lakshman R, Papademetriou V. Effects of moderate intensity exercise on serum lipids in African-American men with severe systemic hypertension. *Am J Cardiol*. 1998;81:732–735.
108. Kraemer WJ, Volek JS, Clark KL, Gordon SE, Incledon T, Puhl SM, Triplett-McBride NT, McBride JM, Putukian M, Sebastianelli WJ. Physiological adaptations to a weight-loss dietary regimen and exercise programs in women. *J Appl Physiol*. 1997;83:270–279.
109. Kraemer WJ, Volek JS, Clark KL, Gordon SE, Puhl SM, Koziris LP, McBride JM, Triplett-McBride NT, Putukian M, Newton RU, Hakkinen K, Bush JA, Sebastianelli WJ. Influence of exercise training on physiological and performance changes with weight loss in men. *Med Sci Sports Exerc*. 1999;31:1320–1329.
110. Krogh J, Videbech P, Thomsen C, Gluud C, Nordentoft M. DEMO-II trial. Aerobic exercise versus stretching exercise in patients with major depression—a randomised clinical trial. *PLoS One*. 2012;7:e48316.
111. Krstrup P, Nielsen JJ, Krstrup BR, Christensen JF, Pedersen H, Randers MB, Aagaard P, Petersen AM, Nybo L, Bangsbo J. Recreational soccer is an effective health-promoting activity for untrained men. *Br J Sports Med*. 2009;43:825–831.
112. Kukkonen-Harjula K, Laukkanen R, Vuori I, Oja P, Pasanen M, Nenonen A, Uusi-Rasi K. Effects of walking training on health-related fitness in healthy middle-aged adults—a randomized controlled study. *Scand J Med Sci Sports*. 1998;8:236–242.
113. Kurban S, Mehmetoglu I, Yerlikaya HF, Gonen S, Erdem S. Effect of chronic regular exercise on serum ischemia-modified albumin levels and oxidative stress in type 2 diabetes mellitus. *Endocr Res*. 2011;36:116–123.
114. Laaksonen DE, Atalay M, Niskanen LK, Mustonen J, Sen CK, Lakka TA, Uusitupa MI. Aerobic exercise and the lipid profile in type 1 diabetic men: a randomized controlled trial. *Med Sci Sports Exerc*. 2000;32:1541–1548.
115. Labrunee M, Antoine D, Verges B, Robin I, Casillas JM, Gremaux V. Effects of a home-based rehabilitation program in obese type 2 diabetics. *Ann Phys Rehabil Med*. 2012;55:415–429.
116. Lake MJ, Cavanagh PR. Six weeks of training does not change running mechanics or improve running economy. *Med Sci Sports Exerc*. 1996;28:860–869.
117. LaPerriere A, Antoni MH, Ironson G, Perry A, McCabe P, Klimas N, Helder L, Schneiderman N, Fletcher MA. Effects of aerobic exercise training on lymphocyte subpopulations. *Int J Sports Med*. 1994;15(suppl 3):S127–S130.
118. Lee CM, Wood RH, Welsch MA. Influence of short-term endurance exercise training on heart rate variability. *Med Sci Sports Exerc*. 2003;35:961–969.
119. Lee M-G, Park K-S, Kim D-U, Choi S-M, Kim H-J. Effects of high-intensity exercise training on body composition, abdominal fat loss, and cardiorespiratory fitness in middle-aged Korean females. *Appl Physiol Nutr Metab*. 2012;37:1019–1027.
120. LeMura LM, von Duvillard SP, Andreacci J, Klebez JM, Chelland SA, Russo J. Lipid and lipoprotein profiles, cardiovascular fitness, body composition, and diet during and after resistance, aerobic and combination training in young women. *Eur J Appl Physiol*. 2000;82:451–458.
121. Libardi CA, De Souza GV, Cavaglieri CR, Madruga VA, Chacon-Mikahil MPT. Effect of resistance, endurance, and concurrent training on TNF-alpha, IL-6, and CRP. *Med Sci Sports Exerc*. 2012;44:50–56.
122. de Lima C, Boulosa DA, Frollini AB, Donatto FF, Leite RD, Gonelli PRG, Montebello MIL, Prestes J, Cesar MC. Linear and daily undulating resistance training periodizations have differential beneficial effects in young sedentary women. *Int J Sports Med*. 2012;33:723–727.
123. Lovell D, Cuneo R, Delphinus E, Gass G. Leg strength and the VO₂ max of older men. *Int J Sports Med*. 2011;32:271–276.
124. Martin D, Kauwell GP. Continuous assistive-passive exercise and cycle ergometer training in sedentary women. *Med Sci Sports Exerc*. 1990;22:523–527.
125. McAuley KA, Williams SM, Mann JI, Goulding A, Chisholm A, Wilson N, Story G, McLay RT, Harper MJ, Jones IE. Intensive lifestyle changes are necessary to improve insulin sensitivity: a randomized controlled trial. *Diabetes Care*. 2002;25:445–452.
126. Meckling KA, Sherfey R. A randomized trial of a hypocaloric high-protein diet, with and without exercise, on weight loss, fitness, and markers of the metabolic syndrome in overweight and obese women. *Appl Physiol Nutr Metab*. 2007;32:743–752.
127. Meyer T, Auracher M, Heeg K, Urhausen A, Kindermann W. Does cumulating endurance training at the weekends impair training effectiveness? *Eur J Cardiovasc Prev Rehabil*. 2006;13:578–584.
128. Miyaki A, Maeda S, Choi Y, Akazawa N, Tanabe Y, Ajisaka R. Habitual aerobic exercise increases plasma pentraxin 3 levels in middle-aged and elderly women. *Appl Physiol Nutr Metab*. 2012;37:907–911.
129. Morey MC, Pieper CF, Edelman DE, Yancy WS Jr, Green JB, Lum H, Peterson MJ, Sloane R, Cowper PA, Bosworth HB, Huffman KM, Cavanaugh JT, Hall KS, Pearson MP, Taylor GA. Enhanced fitness: a randomized controlled trial of the effects of home-based physical activity counseling on glycemic control in older adults with prediabetes mellitus. *J Am Geriatr Soc*. 2012;60:1655–1662.
130. Morgan AL, Tobar DA, Snyder L. Walking toward a new me: the impact of prescribed walking 10,000 steps/day on physical and psychological well-being. *J Phys Act Health*. 2010;7:299–307.
131. Morton RD, West DJ, Stephens JW, Bain SC, Bracken RM. Heart rate prescribed walking training improves cardiorespiratory fitness but not

- glycaemic control in people with type 2 diabetes. *J Sports Sci.* 2010;28:93–99.
132. Murphy MH, Murtagh EM, Boreham CA, Hare LG, Nevill AM. The effect of a worksite based walking programme on cardiovascular risk in previously sedentary civil servants [NCT00284479]. *BMC Public Health.* 2006;6:136.
 133. Murtagh EM, Boreham CAG, Nevill A, Hare LG, Murphy MH. The effects of 60 minutes of brisk walking per week, accumulated in two different patterns, on cardiovascular risk. *Prev Med.* 2005;41:92–97.
 134. Musa DI, Adeniran SA, Dikko AU, Sayers SP. The effect of a high-intensity interval training program on high-density lipoprotein cholesterol in young men. *J Strength Cond Res.* 2009;23:587–592.
 135. Nemoto K-I, Gen-no H, Masuki S, Okazaki K, Nose H. Effects of high-intensity interval walking training on physical fitness and blood pressure in middle-aged and older people. *Mayo Clin Proc.* 2007;82:803–811.
 136. Nicklas BJ, Wang X, You T, Lyles MF, Demons J, Easter L, Berry MJ, Lenchik L, Carr JJ. Effect of exercise intensity on abdominal fat loss during calorie restriction in overweight and obese postmenopausal women: a randomized, controlled trial. *Am J Clin Nutr.* 2009;89:1043–1052.
 137. Niederseer D, Ledl-Kurkowski E, Kvita K, Patsch W, Dela F, Mueller E, Niebauer J. Salzburg skiing for the elderly study: changes in cardiovascular risk factors through skiing in the elderly. *Scand J Med Sci Sports.* 2011;21 (suppl 1):47–55.
 138. Nieman DC, Warren BJ, O'Donnell KA, Dotson RG, Butterworth DE, Henson DA. Physical activity and serum lipids and lipoproteins in elderly women. *J Am Geriatr Soc.* 1993;41:1339–1344.
 139. Nieman DC, Nehlsen-Cannarella SL, Henson DA, Koch AJ, Butterworth DE, Fagoaga OR, Utter A. Immune response to exercise training and/or energy restriction in obese women. *Med Sci Sports Exerc.* 1998;30:679–686.
 140. Nordby P, Auerbach PL, Rosenkilde M, Kristiansen L, Thomasen JR, Rygaard L, Groth R, Brandt N, Helge JW, Richter EA, Ploug T, Stallknecht B. Endurance training per se increases metabolic health in young, moderately overweight men. *Obesity.* 2012;20:2202–2212.
 141. O'Donovan G, Owen A, Bird SR, Kearney EM, Nevill AM, Jones DW, Woolf-May K. Changes in cardiorespiratory fitness and coronary heart disease risk factors following 24 wk of moderate- or high-intensity exercise of equal energy cost. *J Appl Physiol.* 2005;98:1619–1625.
 142. Pantou LB, Graves JE, Pollock ML, Hagberg JM, Chen W. Effect of aerobic and resistance training on fractionated reaction time and speed of movement. *J Gerontol.* 1990;45:M26–M31.
 143. Pollock ML, Carroll JF, Graves JE, Leggett SH, Braith RW, Limacher M, Hagberg JM. Injuries and adherence to walk/jog and resistance training programs in the elderly. *Med Sci Sports Exerc.* 1991;23:1194–1200.
 144. Phillips MD, Patrizi RM, Cheek DJ, Wooten JS, Barbee JJ, Mitchell JB. Resistance training reduces subclinical inflammation in obese, postmenopausal women. *Med Sci Sports Exerc.* 2012;44:2099–2110.
 145. Poehlman ET, Dvorak RV, DeNino WF, Brochu M, Ades PA. Effects of resistance training and endurance training on insulin sensitivity in nonobese, young women: a controlled randomized trial. *J Clin Endocrinol Metab.* 2000;85:2463–2468.
 146. Posner JD, Gorman KM, Windsor-Landsberg L, Larsen J, Bleiman M, Shaw C, Rosenberg B, Knebl J. Low to moderate intensity endurance training in healthy older adults: physiological responses after four months. *J Am Geriatr Soc.* 1992;40:1–7.
 147. Probart CK, Notelovitz M, Martin D, Khan FY, Fields C. The effect of moderate aerobic exercise on physical fitness among women 70 years and older. *Maturitas.* 1991;14:49–56.
 148. Pyka G, Lindenberger E, Charette S, Marcus R. Muscle strength and fiber adaptations to a year-long resistance training program in elderly men and women. *J Gerontol.* 1994;49:M22–M27.
 149. Chow R, Harrison JE, Notarius C. Effect of two randomised exercise programmes on bone mass of healthy postmenopausal women. *Br Med J (Clin Res Ed).* 1987;295:1441–1444.
 150. Raz I, Rosenblit H, Kark JD. Effect of moderate exercise on serum lipids in young men with low high density lipoprotein cholesterol. *Arteriosclerosis.* 1988;8:245–251.
 151. Ready AE, Naimark B, Ducas J, Sawatzky JV, Boreskie SL, Drinkwater DT, Oosterveen S. Influence of walking volume on health benefits in women post-menopause. *Med Sci Sports Exerc.* 1996;28:1097–1105.
 152. Romero-Arenas S, Blazevich AJ, Martinez-Pascual M, Perez-Gomez J, Luque AJ, Lopez-Roman FJ, Alcaraz PE. Effects of high-resistance circuit training in an elderly population. *Exp Gerontol.* 2013;48:334–340.
 153. Santa-Clara H, Szymanski L, Fernhall B. Effect of exercise training on blood pressure in postmenopausal Caucasian and African-American women. *Am J Cardiol.* 2003;91:1009–1011.
 154. Santa-Clara H, Szymanski L, Ordille T, Fernhall B. Effects of exercise training on resting metabolic rate in postmenopausal African American and Caucasian women. *Metabolism.* 2006;55:1358–1364.
 155. Santiago MC, Leon AS, Serfass RC. Failure of 40 weeks of brisk walking to alter blood lipids in normolipemic women. *Can J Appl Physiol.* 1995;20:417–428.
 156. Scanga CB, Verde TJ, Paolone AM, Andersen RE, Wadden TA. Effects of weight loss and exercise training on natural killer cell activity in obese women. *Med Sci Sports Exerc.* 1998;30:1666–1671.
 157. Seifert T, Rasmussen P, Brassard P, Homann PH, Wissenberg M, Nordby P, Stallknecht B, Secher NH, Nielsen HB. Cerebral oxygenation and metabolism during exercise following three months of endurance training in healthy overweight males. *Am J Physiol Regul Integr Comp Physiol.* 2009;297:R867–R876.
 158. Lamina S. Comparative effect of interval and continuous training programs on serum uric acid in management of hypertension: a randomized controlled trial. *J Strength Cond Res.* 2011;25:719–726.
 159. Sillanpaa E, Laaksonen DE, Hakkinen A, Karavirta L, Jensen B, Kraemer WJ, Nyman K, Hakkinen K. Body composition, fitness, and metabolic health during strength and endurance training and their combination in middle-aged and older women. *Eur J Appl Physiol.* 2009;106:285–296.
 160. Sillanpaa E, Hakkinen A, Laaksonen DE, Karavirta L, Kraemer WJ, Hakkinen K. Serum basal hormone concentrations, nutrition and physical fitness during strength and/or endurance training in 39-64-year-old women. *Int J Sports Med.* 2010;31:110–117.
 161. Sloan CA, Engels HJ, Fahlman MM, Yarandi HE, Davis JE. Effects of exercise on S-IGA and URS in postmenopausal women. *Int J Sports Med.* 2013;34:81–86.
 162. Spence AL, Carter HH, Naylor LH, Green DJ. A prospective randomized longitudinal study involving 6 months of endurance or resistance exercise. Conduit artery adaptation in humans. *J Physiol.* 2013;591:1265–1275.
 163. Stachenfeld NS, Mack GW, DiPietro L, Morocco TS, Jozsi AC, Nadel ER. Regulation of blood volume during training in post-menopausal women. *Med Sci Sports Exerc.* 1998;30:92–98.
 164. Stein PK, Boutcher SH. The effect of participation in an exercise training program on cardiovascular reactivity in sedentary middle-aged males. *Int J Psychophysiol.* 1992;13:215–223.
 165. Stensel DJ, Hardman AE, Brooke-Wavell K, Vallance D, Jones PR, Norgan NG, Winder AF. Brisk walking and serum lipoprotein variables in formerly sedentary men aged 42–59 years. *Clin Sci.* 1993;85:701–708.
 166. Stensvold D, Tjonaa AE, Skaug E-A, Aspenes S, Stolen T, Wisloff U, Slordahl SA. Strength training versus aerobic interval training to modify risk factors of metabolic syndrome. *J Appl Physiol.* 2010;108:804–810.
 167. Strasser B, Keinrad M, Haber P, Schobersberger W. Efficacy of systematic endurance and resistance training on muscle strength and endurance performance in elderly adults—a randomized controlled trial. *Wien Klin Wochenschr.* 2009;121:757–764.
 168. Sung K, Bae S. Effects of a regular walking exercise program on behavioral and biochemical aspects in elderly people with type II diabetes. *Nurs Health Sci.* 2012;14:438–445.
 169. Takeshima N, Rogers ME, Watanabe E, Brechue WF, Okada A, Yamada T, Islam MM, Hayano J. Water-based exercise improves health-related aspects of fitness in older women. *Med Sci Sports Exerc.* 2002;34:544–551.
 170. Takeshima N, Rogers ME, Islam MM, Yamauchi T, Watanabe E, Okada A. Effect of concurrent aerobic and resistance circuit exercise training on fitness in older adults. *Eur J Appl Physiol.* 2004;93:173–182.
 171. Thomas TR, Adeniran SB, Etheridge GL. Effects of different running programs on VO₂ max, percent fat, and plasma lipids. *Can J Appl Sport Sci.* 1984;9:55–62.
 172. Thompson D, Markovitch D, Betts JA, Mazzatti D, Turner J, Tyrrell RM. Time course of changes in inflammatory markers during a 6-mo exercise intervention in sedentary middle-aged men: a randomized-controlled trial. *J Appl Physiol.* 2010;108:769–779.
 173. Tjonaa AE, Lee SJ, Rognmo O, Stolen TO, Bye A, Haram PM, Loennechen JP, Al-Share QY, Skogvoll E, Slordahl SA, Kemi OJ, Najjar SM, Wisloff U. Aerobic interval training versus continuous moderate exercise as a treatment for the metabolic syndrome: a pilot study. *Circulation.* 2008;118:346–354.
 174. Toledo FGS, Menshikova EV, Azuma K, Radikova Z, Kelley CA, Ritov VB, Kelley DE. Mitochondrial capacity in skeletal muscle is not stimulated by weight loss despite increases in insulin action and decreases in intramyocellular lipid content. *Diabetes.* 2008;57:987–994.
 175. Tseng M-L, Ho C-C, Chen S-C, Huang Y-C, Lai C-H, Liaw Y-P. A simple method for increasing levels of high-density lipoprotein cholesterol: a pilot

- study of combination aerobic- and resistance-exercise training. *Int J Sport Nutr Exerc Metab.* 2013;23:271–281.
176. Tulppo MP, Hautala AJ, Makikallio TH, Laukkanen RT, Nissila S, Hughson RL, Huikuri HV. Effects of aerobic training on heart rate dynamics in sedentary subjects. *J Appl Physiol.* 2003;95:364–372.
 177. Utter AC, Nieman DC, Shannonhouse EM, Butterworth DE, Nieman CN. Influence of diet and/or exercise on body composition and cardiorespiratory fitness in obese women. *Int J Sport Nutr.* 1998;8:213–222.
 178. van Aggel-Leijssen DP, Saris WH, Homan M, van Baak MA. The effect of exercise training on beta-adrenergic stimulation of fat metabolism in obese men. *Int J Obes Relat Metab Disord.* 2001;25:16–23.
 179. van Aggel-Leijssen DP, Saris WH, Hul GB, van Baak MA. Short-term effects of weight loss with or without low-intensity exercise training on fat metabolism in obese men. *Am J Clin Nutr.* 2001;73:523–531.
 180. van den Berg R, de Groot S, Swart KMA, van der Woude LHV. Physical capacity after 7 weeks of low-intensity wheelchair training. *Disabil Rehabil.* 2010;32:2244–2252.
 181. Vicente-Campos D, Mora J, Castro-Pinero J, Gonzalez-Montesinos JL, Conde-Caveda J, Chicharro JL. Impact of a physical activity program on cerebral vasoreactivity in sedentary elderly people. *J Sports Med Phys Fitness.* 2012;52:537–544.
 182. Vincent KR, Braith RW. Resistance exercise and bone turnover in elderly men and women. *Med Sci Sports Exerc.* 2002;34:17–23.
 183. Vissers D, Verrijken A, Mertens I, Van Gils C, Van de Sompel A, Truijten S, Van Gaal L. Effect of long-term whole body vibration training on visceral adipose tissue: a preliminary report. *Obes Facts.* 2010;3:93–100.
 184. Vitiello MV, Wilkinson CW, Merriam GR, Moe KE, Prinz PN, Ralph DD, Colasurdo EA, Schwartz RS. Successful 6-month endurance training does not alter insulin-like growth factor-I in healthy older men and women. *J Gerontol A Biol Sci Med Sci.* 1997;52:M149–M154.
 185. Volpe SL, Kobusingye H, Bailur S, Stanek E. Effect of diet and exercise on body composition, energy intake and leptin levels in overweight women and men. *J Am Coll Nutr.* 2008;27:195–208.
 186. Waib PH, Goncalves MI, Barrile SR. Improvements in insulin sensitivity and muscle blood flow in aerobic-trained overweight-obese hypertensive patients are not associated with ambulatory blood pressure. *J Clin Hypertens.* 2011;13:89–96.
 187. Wallman K, Plant LA, Rakimov B, Maiorana AJ. The effects of two modes of exercise on aerobic fitness and fat mass in an overweight population. *Res Sports Med.* 2009;17:156–170.
 188. Wang J-S, Li Y-S, Chen J-C, Chen Y-W. Effects of exercise training and deconditioning on platelet aggregation induced by alternating shear stress in men. *Arterioscler Thromb Vasc Biol.* 2005;25:454–460.
 189. Wang J-S, Chen W-L, Weng T-P. Hypoxic exercise training reduces senescent T-lymphocyte subsets in blood. *Brain Behav Immun.* 2011;25:270–278.
 190. Warner JG Jr, Ullrich IH, Albrink MJ, Yeater RA. Combined effects of aerobic exercise and omega-3 fatty acids in hyperlipidemic persons. *Med Sci Sports Exerc.* 1989;21:498–505.
 191. Warren BJ, Nieman DC, Dotson RG, Adkins CH, O'Donnell KA, Haddock BL, Butterworth DE. Cardiorespiratory responses to exercise training in septuagenarian women. *Int J Sports Med.* 1993;14:60–65.
 192. Watkins LL, Sherwood A, Feinglos M, Hinderliter A, Babyak M, Gullette E, Waugh R, Blumenthal JA. Effects of exercise and weight loss on cardiac risk factors associated with syndrome X. *Arch Intern Med.* 2003;163:1889–1895.
 193. Wong DG, Rechnitzer PA, Cunningham DA, Howard JH. Effect of an exercise program on the perception of exertion in males at retirement. *Can J Sport Sci.* 1990;15:249–253.
 194. Woods JA, Ceddia MA, Wolters BW, Evans JK, Lu Q, McAuley E. Effects of 6 months of moderate aerobic exercise training on immune function in the elderly. *Mech Ageing Dev.* 1999;109:1–19.
 195. Wu Y-T, Hwang C-L, Chen C-N, Chuang L-M. Home-based exercise for middle-aged Chinese at diabetic risk: a randomized controlled trial. *Prev Med.* 2011;52:337–343.
 196. Yoshizawa M, Maeda S, Miyaki A, Misono M, Choi Y, Shimojo N, Ajisaka R, Tanaka H. Additive beneficial effects of lactotripeptides and aerobic exercise on arterial compliance in postmenopausal women. *Am J Physiol Heart Circ Physiol.* 2009;297:H1899–H1903.
 197. Yoshizawa M, Maeda S, Miyaki A, Misono M, Saito Y, Tanabe K, Kuno S, Ajisaka R. Effect of 12 weeks of moderate-intensity resistance training on arterial stiffness: a randomized controlled trial in women aged 32–59 years. *Br J Sports Med.* 2009;43:615–618.
 198. You T, Murphy KM, Lyles MF, Demons JL, Lenchik L, Nicklas BJ. Addition of aerobic exercise to dietary weight loss preferentially reduces abdominal adipocyte size. *Int J Obes.* 2006;30:1211–1216.
 199. Ziemann E, Grzywacz T, Luszczuk M, Laskowski R, Olek RA, Gibson AL. Aerobic and anaerobic changes with high-intensity interval training in active college-aged men. *J Strength Cond Res.* 2011;25:1104–1112.
 200. Lee CD, Blair SN, Jackson AS. Cardiorespiratory fitness, body composition, and all-cause and cardiovascular disease mortality in men. *Am J Clin Nutr.* 1999;69:373–380.
 201. Kodama S, Saito K, Tanaka S, Maki M, Yachi Y, Asumi M, Sugawara A, Totsuka K, Shimano H, Ohashi Y, Yamada N, Sone H. Cardiorespiratory fitness as a quantitative predictor of all-cause mortality and cardiovascular events in healthy men and women: a meta-analysis. *JAMA.* 2009;301:2024–2035.
 202. Thompson PD, Crouse SF, Goodpaster B, Kelley D, Moyna N, Pescatello L. The acute versus the chronic response to exercise. *Med Sci Sports Exerc.* 2001;33:S438–S445; discussion S452–433.
 203. Bouchard C, Shepard RJ, Stephens T, Sutton JR, McPherson BD. Exercise, fitness, and health: a consensus of current knowledge. *Med Sci Sports Exerc.* 1991;23:643.
 204. Leaf DA. The effect of physical exercise on reverse cholesterol transport. *Metabolism.* 2003;52:950–957.
 205. Hamilton MT, Etienne J, McClure WC, Pavey BS, Holloway AK. Role of local contractile activity and muscle fiber type on LPL regulation during exercise. *Am J Physiol.* 1998;275:E1016–E1022.
 206. Oscai LB, Tsika RW, Essig DA. Exercise training has a heparin-like effect on lipoprotein lipase activity in muscle. *Can J Physiol Pharmacol.* 1992;70:905–909.
 207. Plaisance EP, Grandjean PW, Mahurin AJ. Independent and combined effects of aerobic exercise and pharmacological strategies on serum triglyceride concentrations: a qualitative review. *Phys Sportsmed.* 2009;37:11–19.
 208. Kohl HW III. Physical activity and cardiovascular disease: evidence for a dose response. *Med Sci Sports Exerc.* 2001;33:S472–S483; discussion S493–474.
 209. Pate RR, Pratt M, Blair SN, Haskell WL, Macera CA, Bouchard C, Buchner D, Ettinger W, Heath GW, King AC, Kriska A, Leon AS, Marcus BH, Morris J, Paffenbarger RS Jr, Patrick K, Pollock ML, Rippe JM, Sallis J, Wilmore JH. Physical activity and public health. A recommendation from the Centers for Disease Control and Prevention and the American College of Sports Medicine. *JAMA.* 1995;273:402–407.
 210. Sakurai T, Ogasawara J, Kizaki T, Sato S, Ishibashi Y, Takahashi M, Kobayashi O, Oh-Ishi S, Nagasawa J, Takahashi K, Ishida H, Izawa T, Ohno H. The effects of exercise training on obesity-induced dysregulated expression of adipokines in white adipose tissue. *Int J Endocrinol.* 2013;2013:801743.
 211. Tilg H, Moschen AR. Adipocytokines: mediators linking adipose tissue, inflammation and immunity. *Nat Rev Immunol.* 2006;6:772–783.
 212. Rabe K, Lehrke M, Parhofer KG, Broedl UC. Adipokines and insulin resistance. *Mol Med.* 2008;14:741–751.
 213. Oguma Y, Shinoda-Tagawa T. Physical activity decreases cardiovascular disease risk in women: review and meta-analysis. *Am J Prev Med.* 2004;26:407–418.
 214. Physical Activity Guidelines Advisory Committee Report, 2008. To the Secretary of Health and Human Services. Part A: executive summary. *Nutr Rev.* 2009;67:114–120.
 215. Kelley GA, Kelley KS, Tran ZV. Aerobic exercise and lipids and lipoproteins in women: a meta-analysis of randomized controlled trials. *J Womens Health (Larchmt).* 2004;13:1148–1164.