

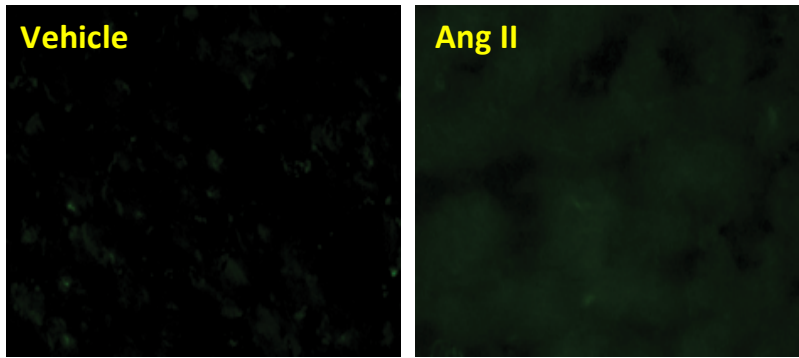
Antagonism of angiotensin 1-7 prevents the therapeutic effects of recombinant human ACE2

Vaibhav B. Patel, Abhijit Takawale, Tharmarajan Ramprasath, Subhash K. Das,
Ratnadeep Basu, Maria B. Grant, David A. Hall,
Zamaneh Kassiri and Gavin Y Oudit

Supplemental Table 1. Taqman Real Time PCR primer and probe sequences.

Gene	Forward Primer	Reverse Primer	Probe
ANF	5'-GGA GGA GAA GAT GCC GGT AGA-3'	5'-GCT TCC TCA GTC TGC TCA CTC A-3'	5'-FAM-TGA GGT CAT GCC CCC GCA GG- TAMRA-3'
BNP	5'-CTG CTG GAG CTG ATA AGA GA-3'	5'-TGC CCA AAG CAG CTT GAG AT-3'	5'-FAM-CTC AAG GCA GCA CCC TCC GGG- TAMRA-3'
β- MHC	5'-GTG CCA AAG GCC TGA ATG AG-3'	5'-GCA AAG GCT CCA GGT CTG A-3'	5'-FAM-ATC TTG TGC TAC CCA GCT CTA A- TAMRA3'
α- SKA	5'-CAG CCG GCG CCT GTT-3'	5'-CCA CAG GGC TTT GTT TGA AAA-3'	5'-FAM-TGA CGT GTA CAT AGA TTG ACT CGT TTT ACC TCA TTT TG- TAMRA-3'

ANF=Atrial natriuretic factor; BNP= B-type natriuretic peptide; β -MHC=beta-myosin heavy chain and α -SKA= alpha-skeletal actin.



Supplemental Fig. 1. *In situ* zymography for gelatinase assay was performed along with two control groups which includes a negative control section (EDTA+ dye quenched gelatin) and a section with no EDTA and no dye quenched gelatin.