

Thumma, Scott and Warren Bird. 2008. *Changes in American Megachurches: Tracing Eight Years of Growth and Innovation in the Nation's Largest-Attendance Congregations*. Leadership Network and Hartford Seminary.

- The report focuses on developing patterns of megachurches observed across three national surveys done in 2000, 2005 and 2008 in a partnership between the Hartford Institute for Religion Research, Hartford Seminary and Leadership Network.
- The report identifies areas of continuity and change over a period of 8 years.
- The surveys collect some few financial information: income and financial health (over a 8 year period) and how megachurches spend their income (only in the 2008 survey)

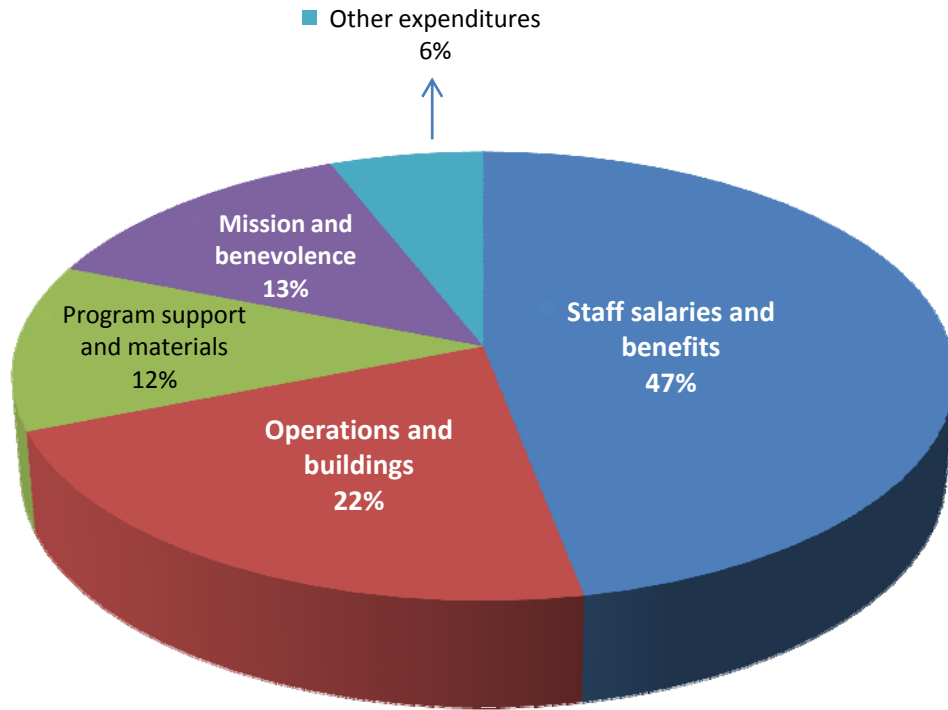
Income Was Essentially Flat Over the Last 3 Years			
Average Income (for previous year)	2000	2005	2008
Actual Income	\$4,772,380	\$6,021,254	\$6,524,070
Income adjusted to 1999 dollars	-----	\$5,310,434	\$5,242,112

Source: Scott Thumma and Warren Bird, *Changes in American Megachurches*, p. 4.

Megachurches Financial Health Is Still Strong – But Not As Strong as in 2005			
Describe your congregation's current financial health	% of churches		
	2000	2005	2008
Excellent or Good	86%	79%	69%
Tight but we manage	10%	19%	27%
In some or serious difficulty	3%	2%	4%

Source: Scott Thumma and Warren Bird, *Changes in American Megachurches*, p. 4.

Half of Megachurch Income Goes to Salaries and Benefits



Source: Scott Thumma and Warren Bird, *Changes in American Megachurches*, p. 5.