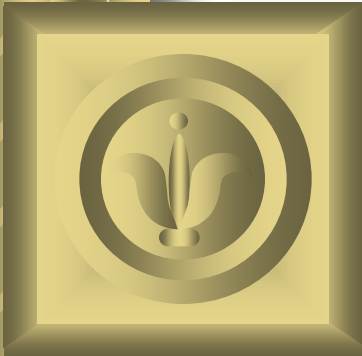


# **Annual Scientific conference of Kenya Association of Physicians**



## **DISPARITIES OF HEALTH CARE: CHALLENGE TO PHYSICIANS**

**Dr. James Nyikal, MBS  
Director of Medical Services**

# Background

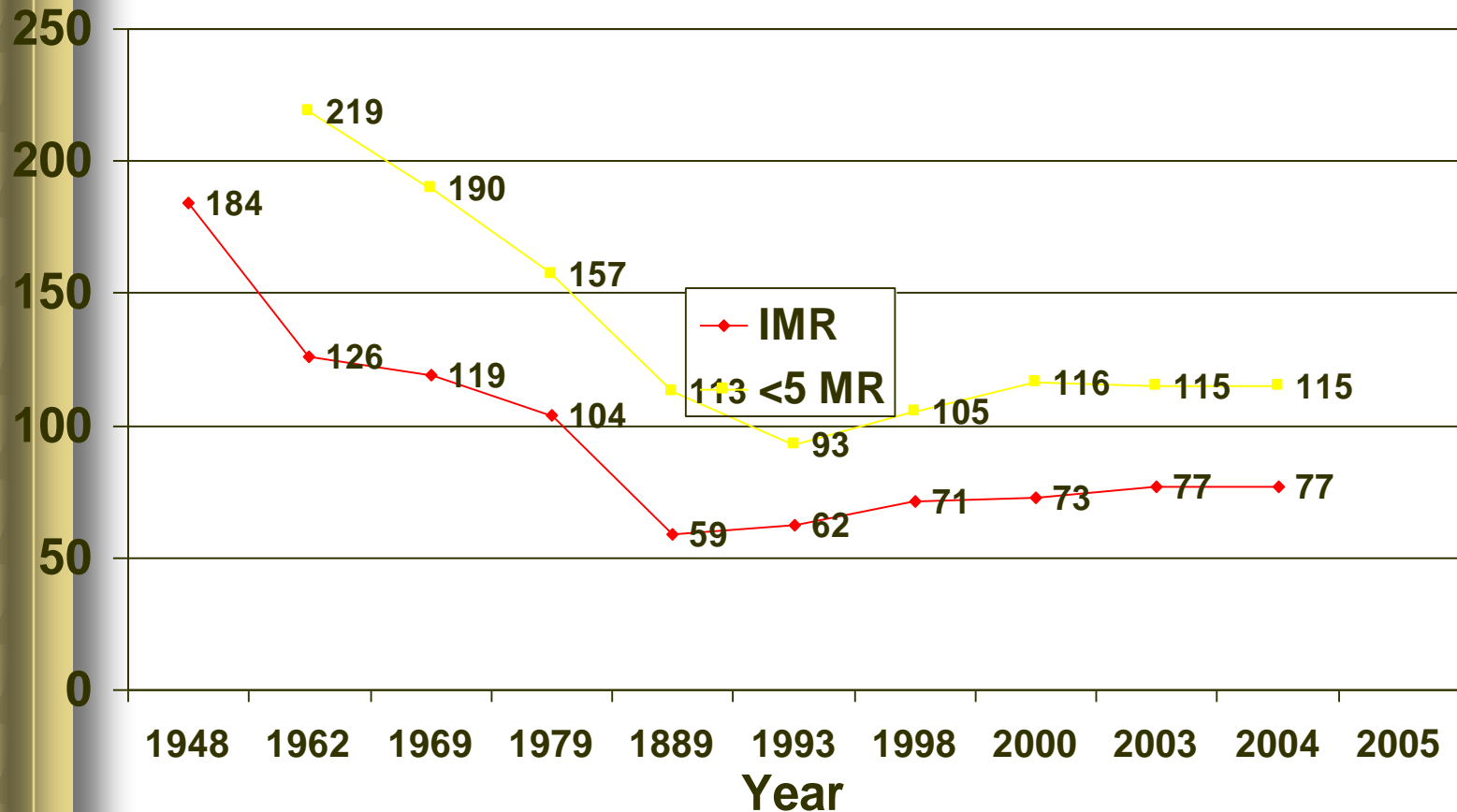
- **Challenges to the health sector**
  - Finance and financial flows
  - Rapid growth of infrastructure
  - Human resource
  - Emerging diseases
  - Coordination
  - Legal framework
  - Poverty

# Deteriorating indices

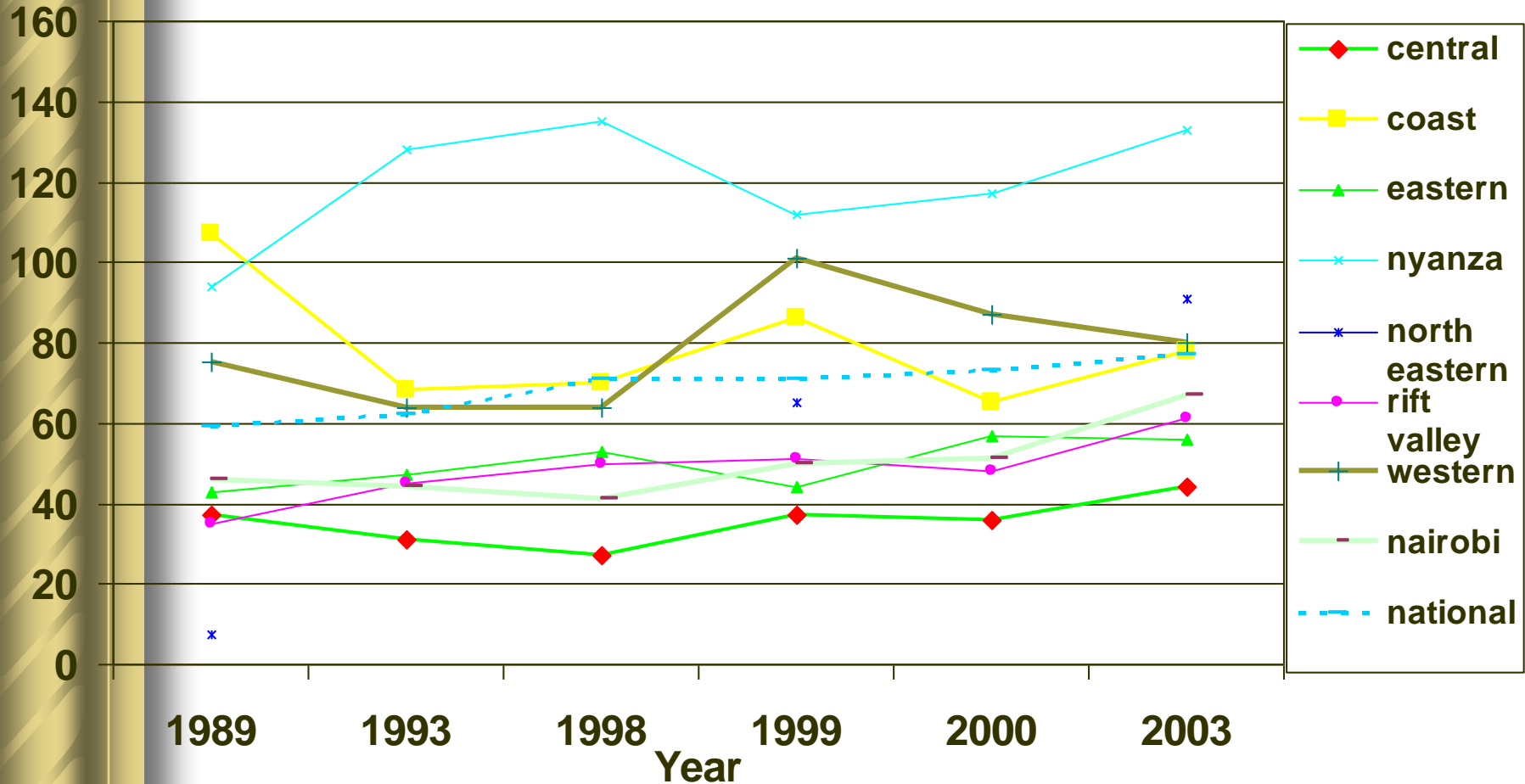
- **Infant mortality rate**
- **Under five mortality rate**
- **Maternal mortality ratio**
- **Life expectancy**
- **Immunization coverage**

# National trends of infant and under five mortality

source: CBS

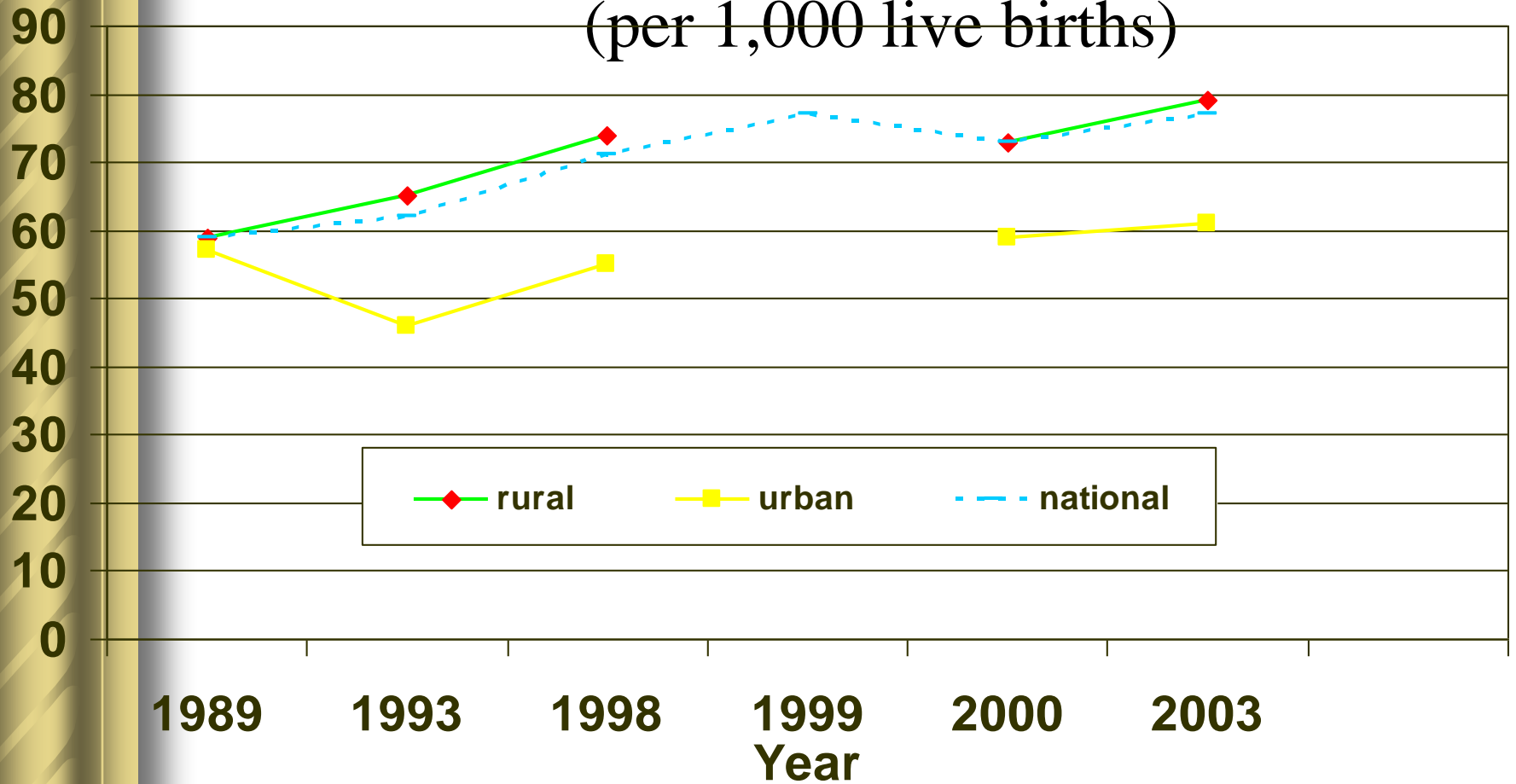


# Trends in IMR by province

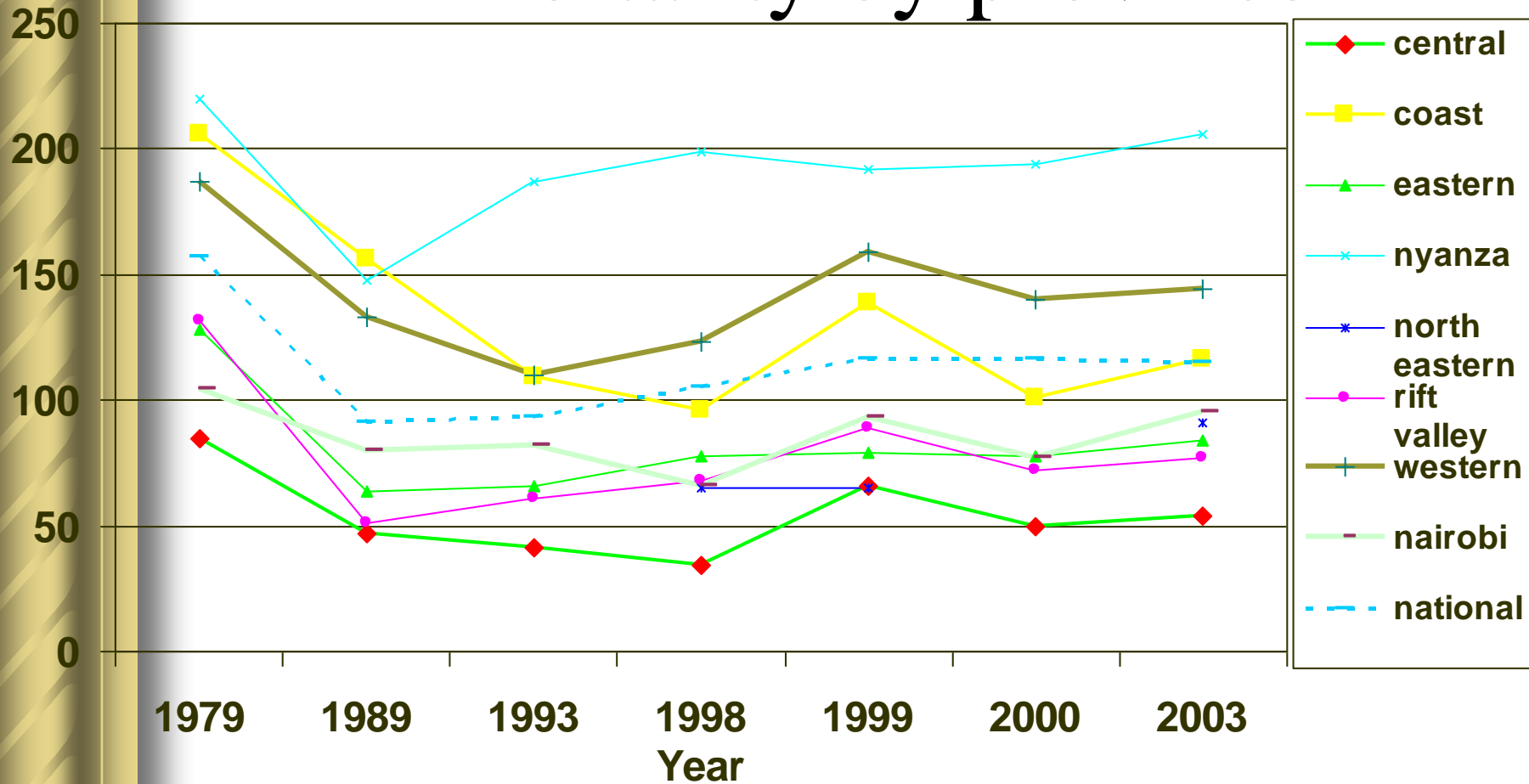


# Trends in IMR rural vs urban

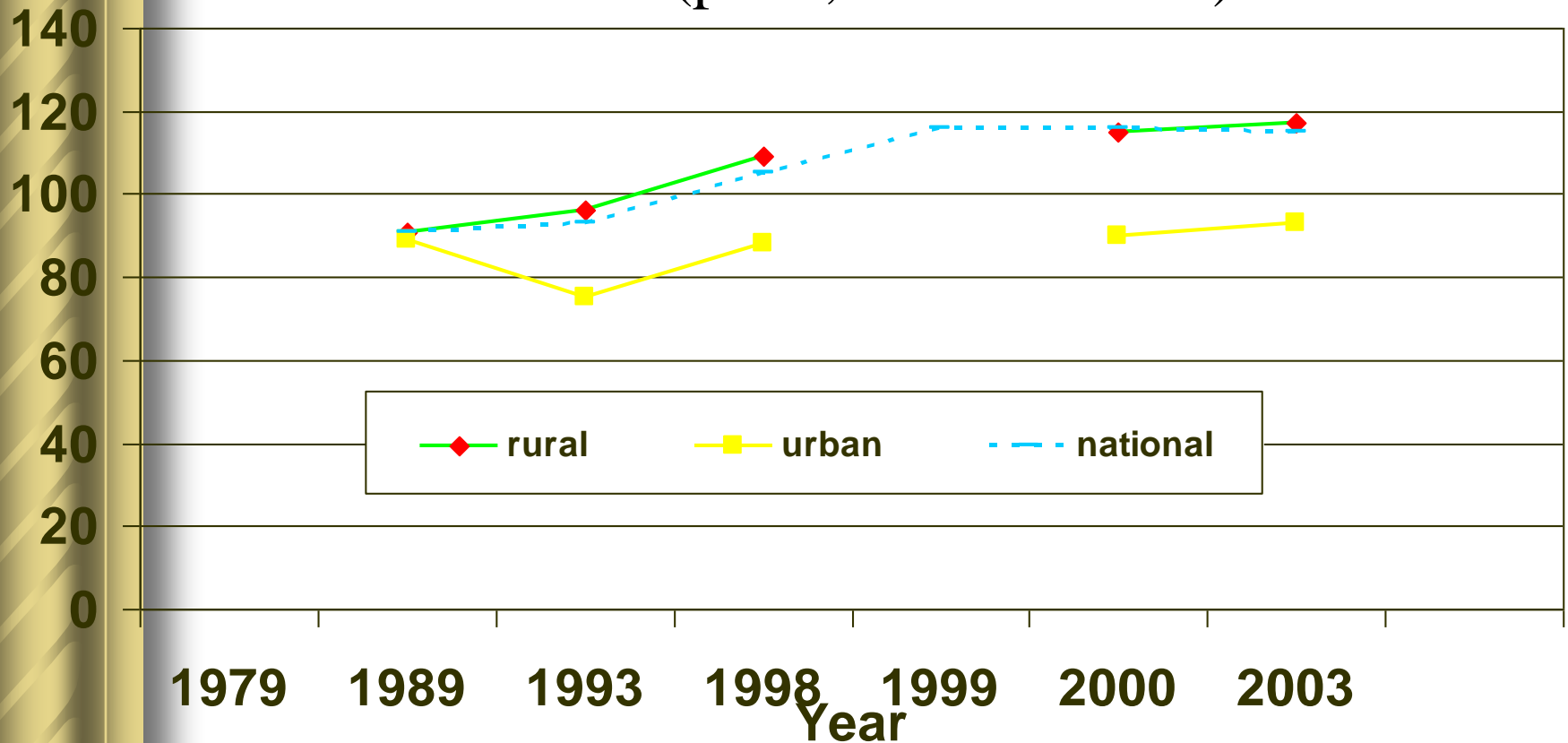
(per 1,000 live births)



# Trends in under five mortality by province

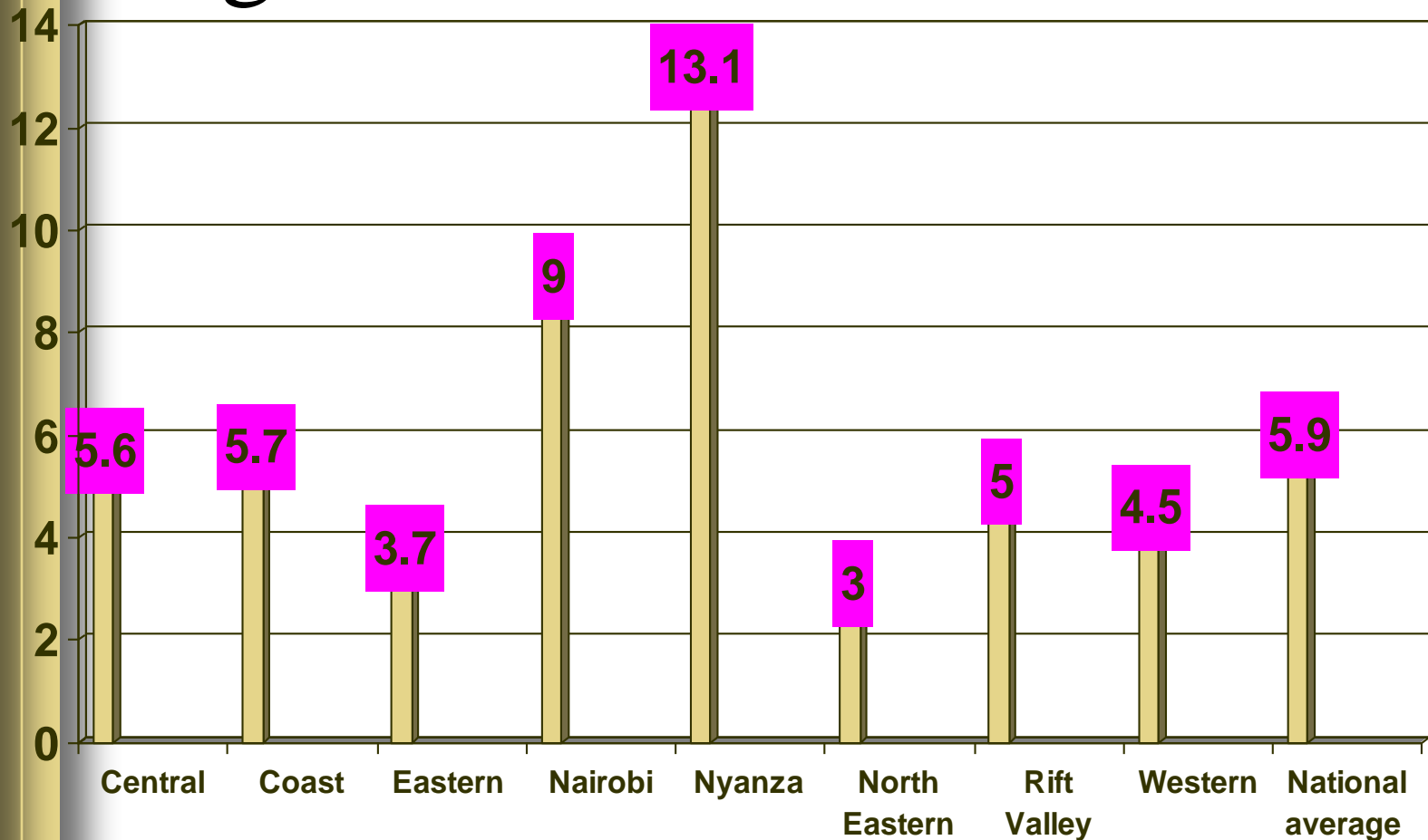


# Trends in under five mortality rural vs urban (per 1,000 live births)

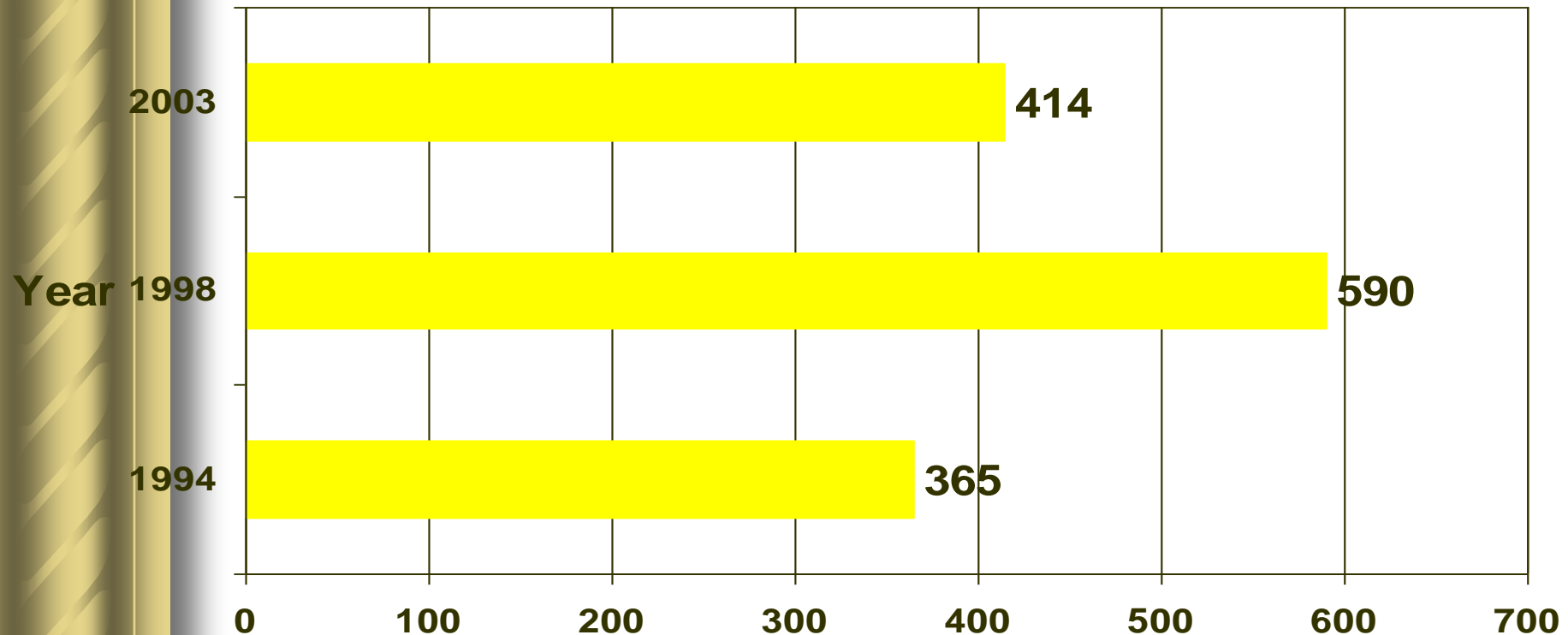




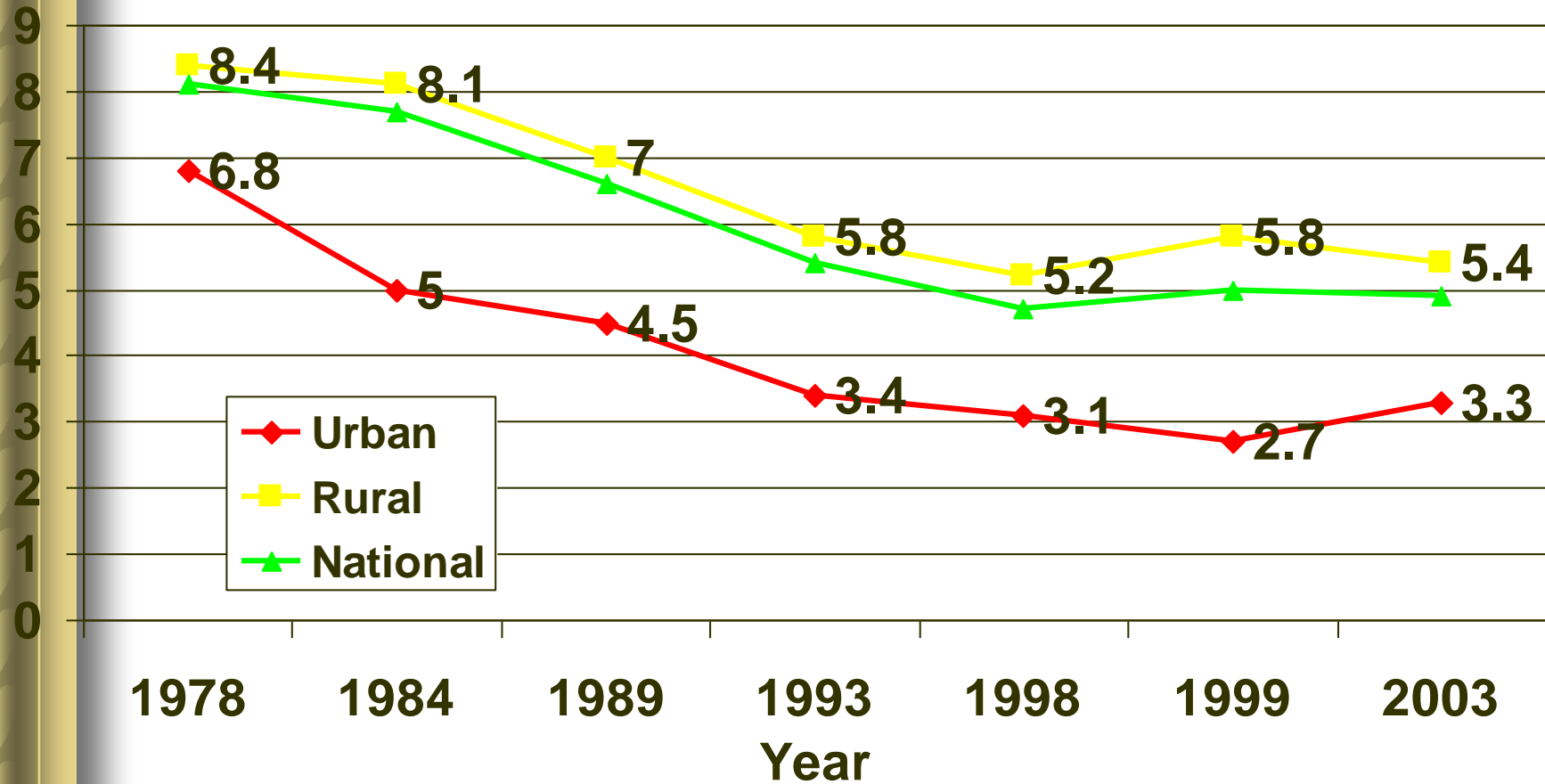
# HIV prevalence rate by region



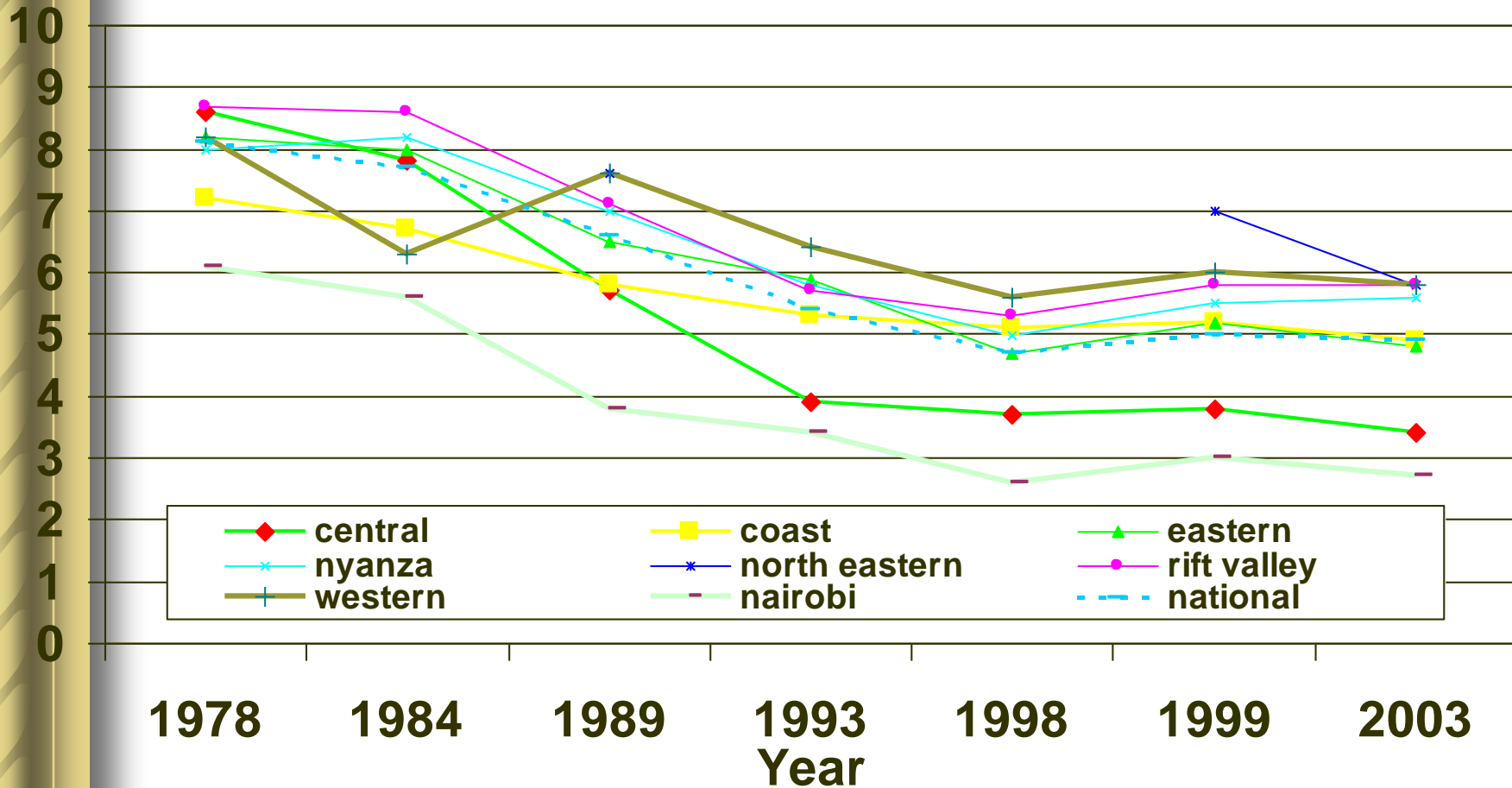
# National trends of maternal mortality ratio (per100,000)



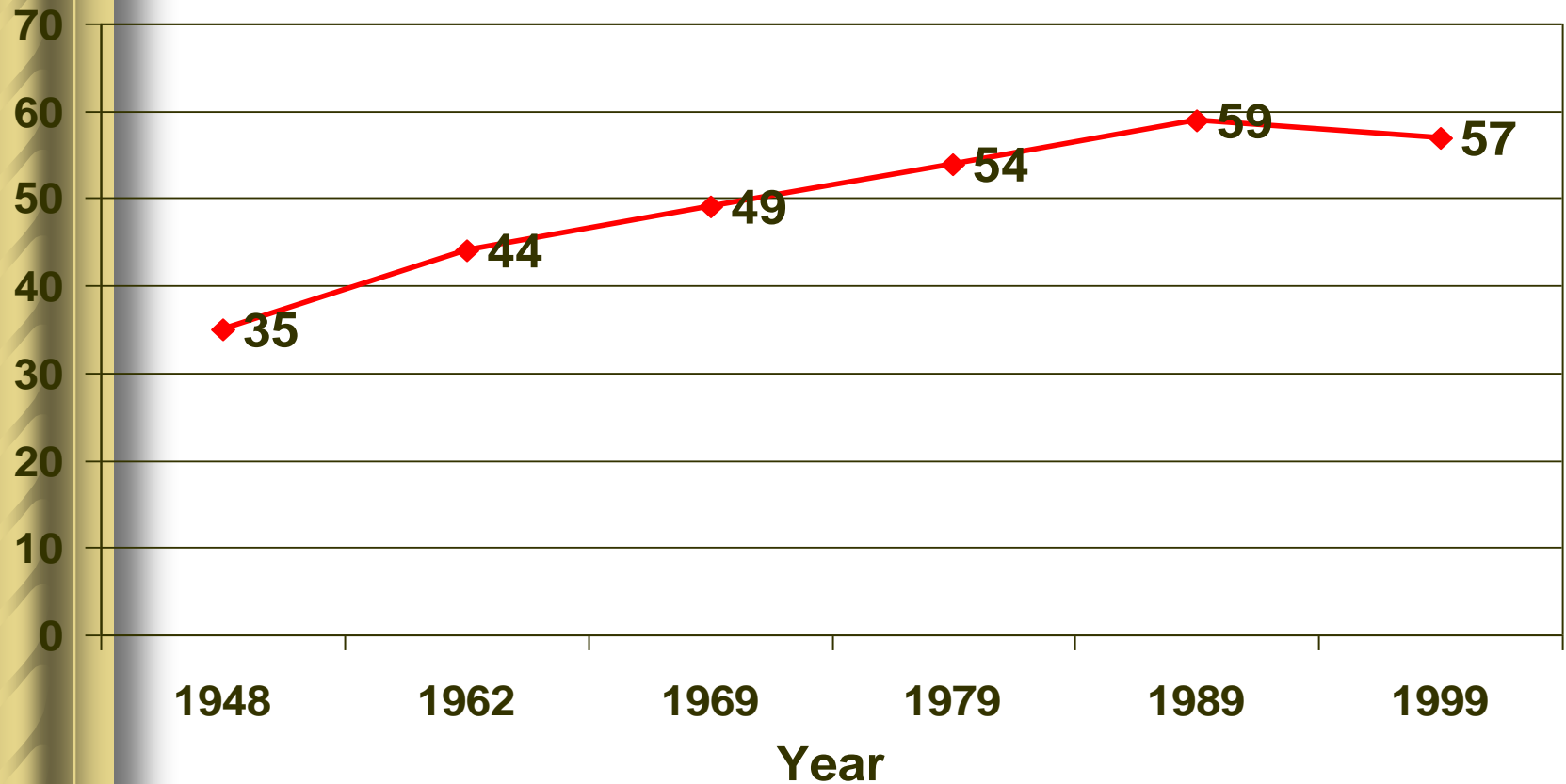
# National trends of fertility rate



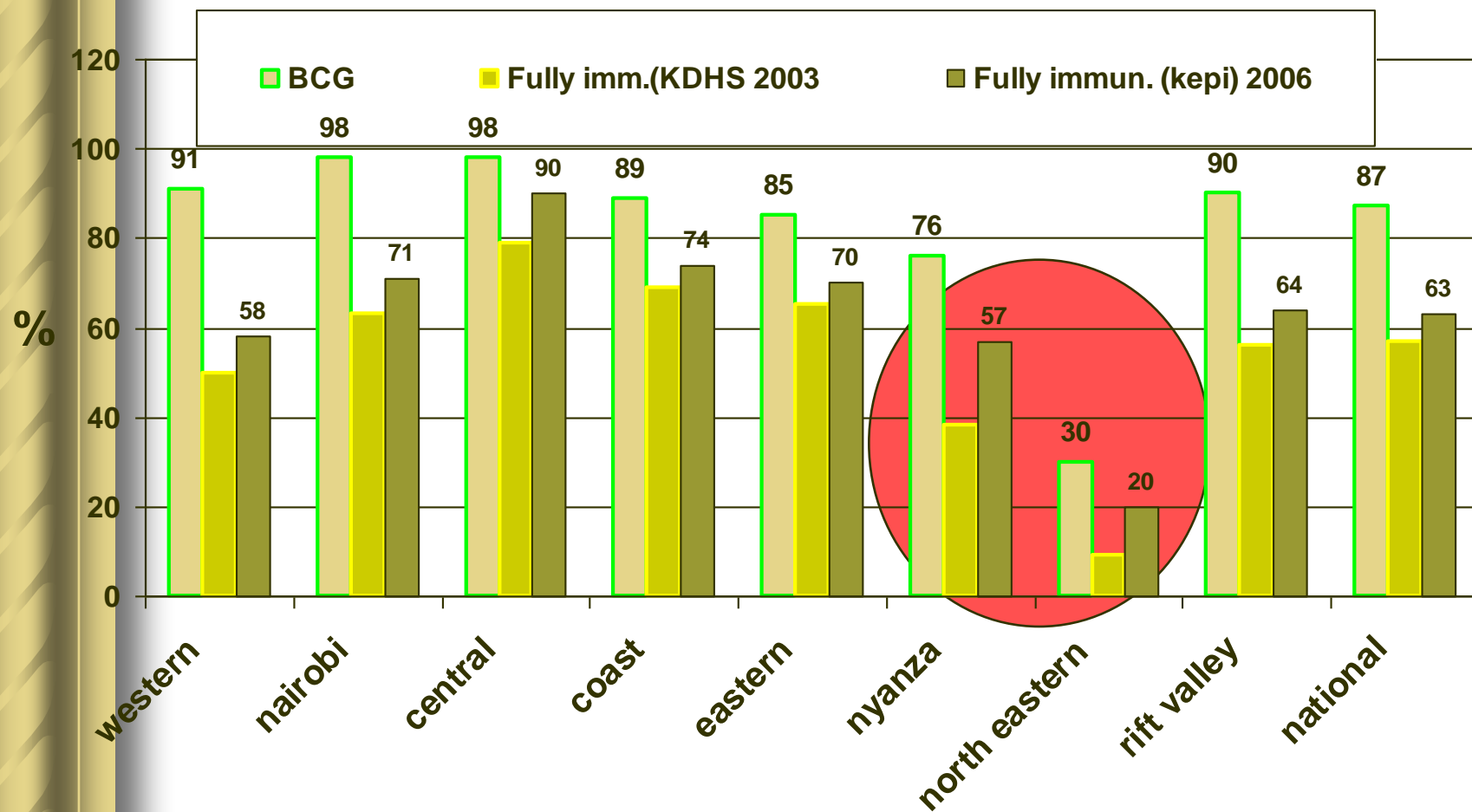
# Trends of fertility rates by province



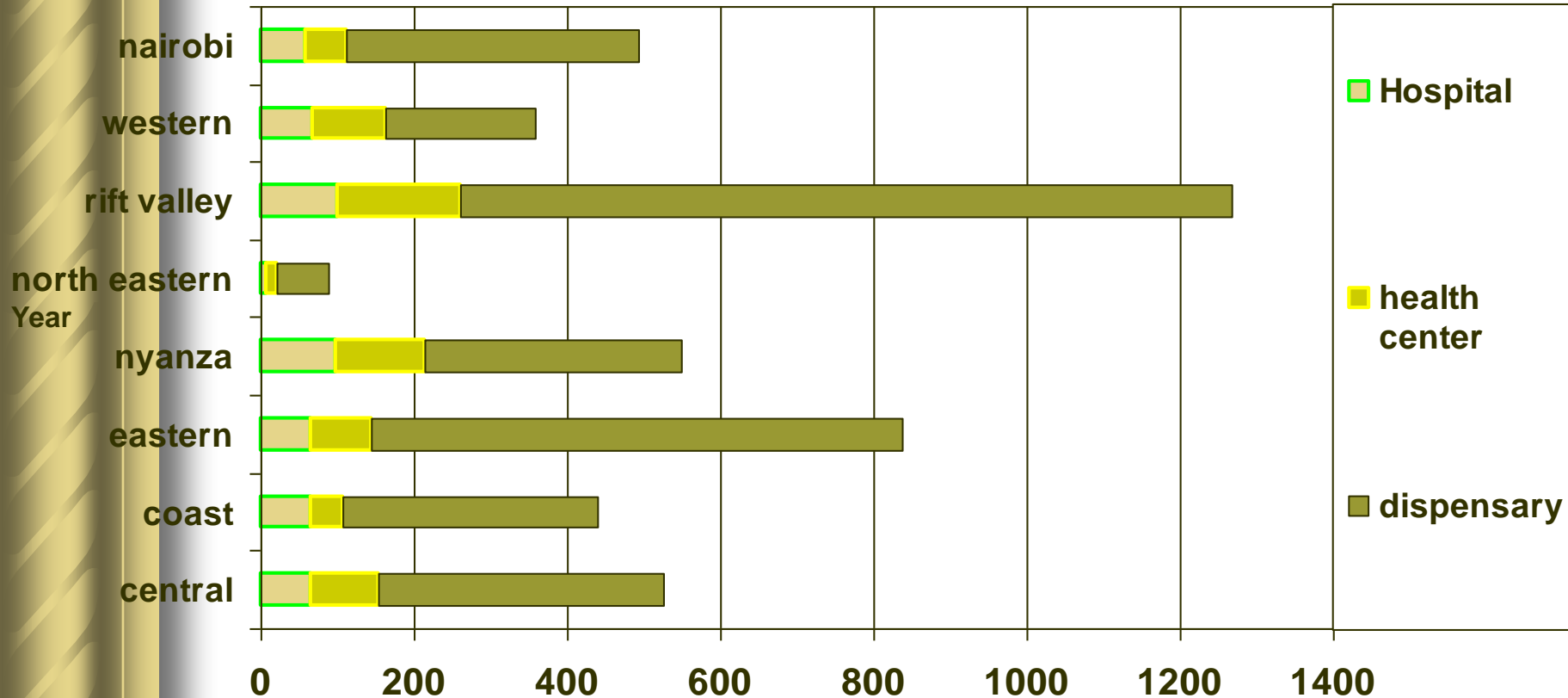
# National trends of life expectancy at birth



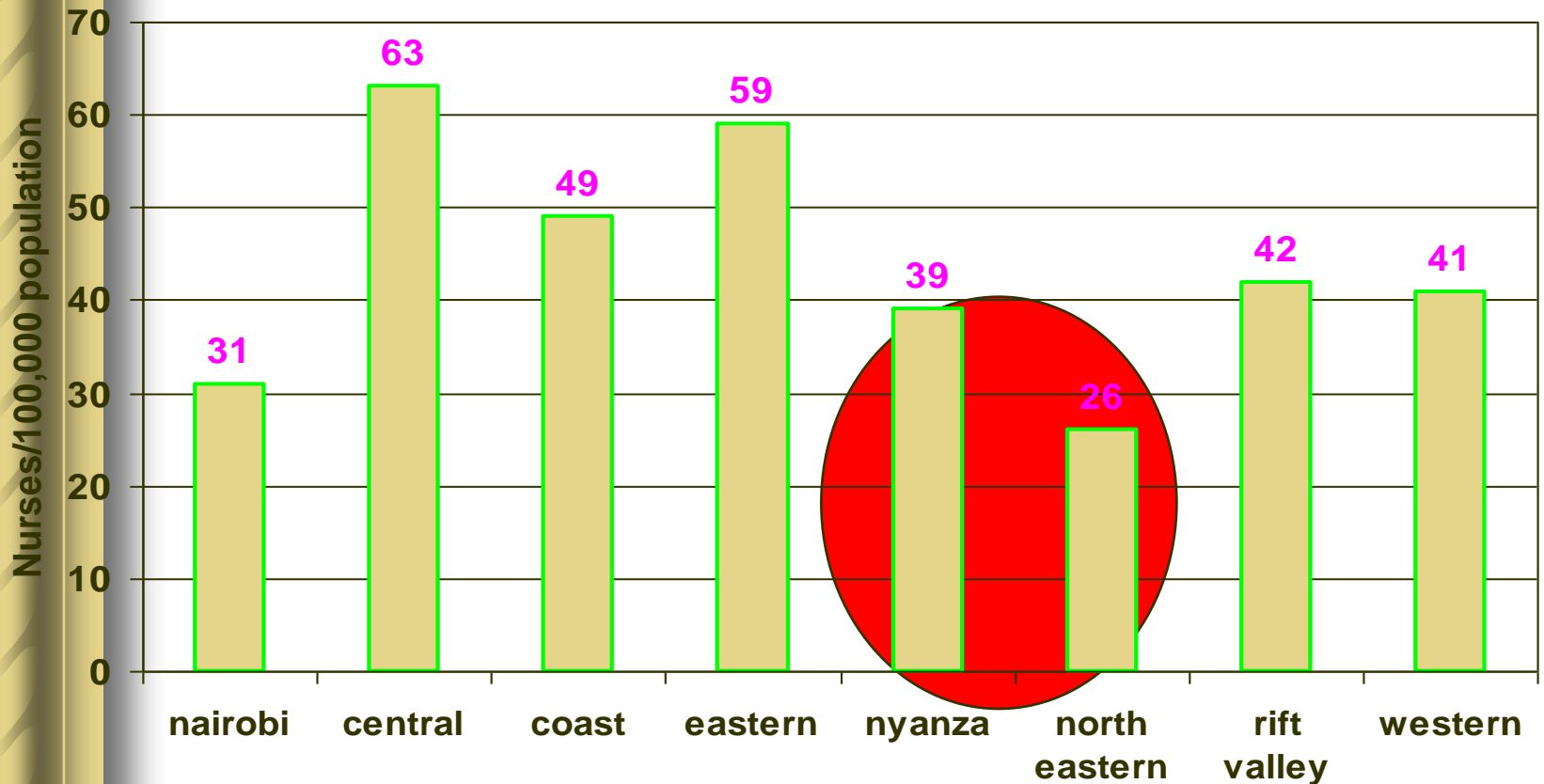
# Immunization coverage by province



# Health institutions distribution by province

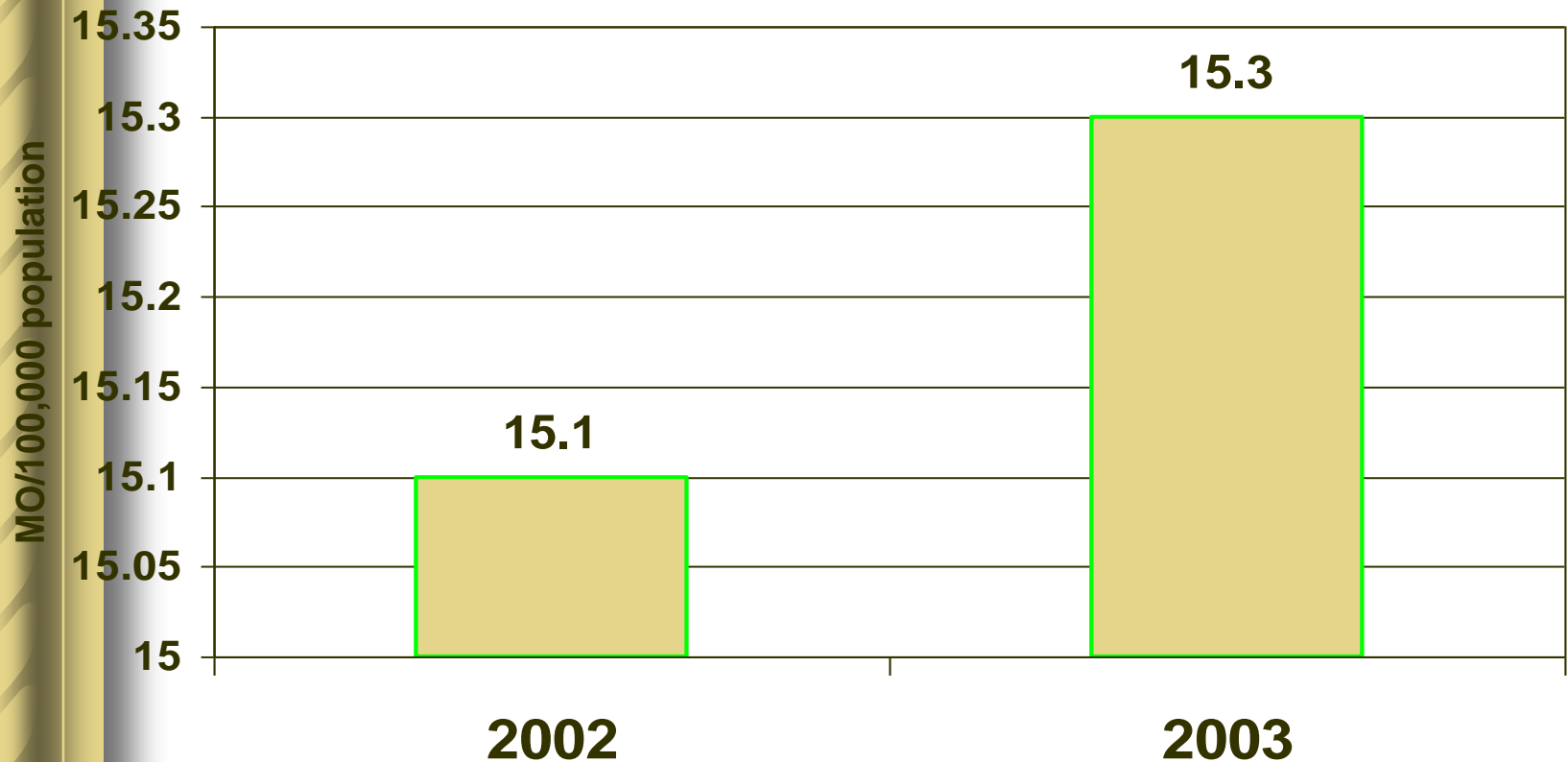


# Distribution of nurses by province

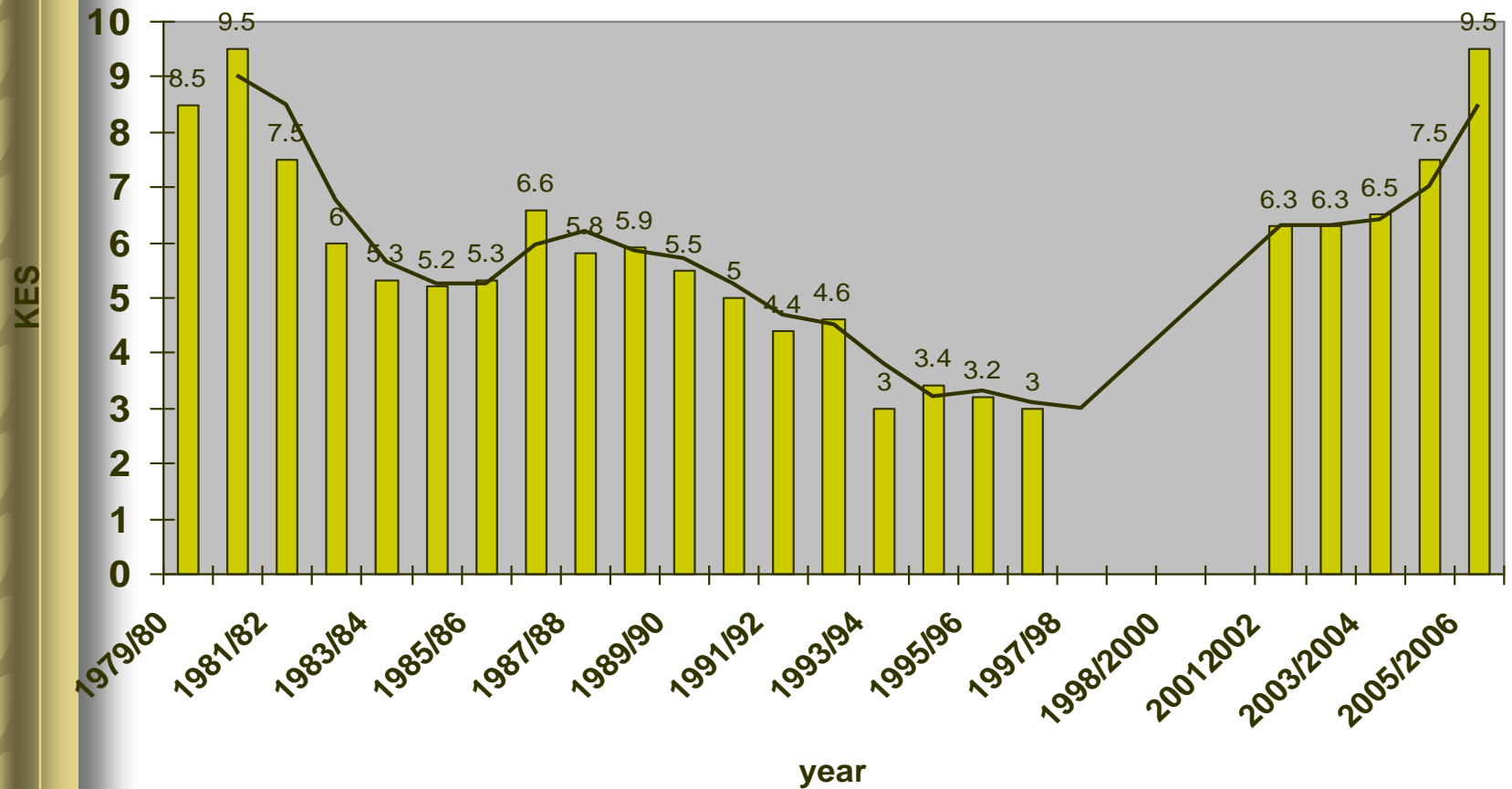




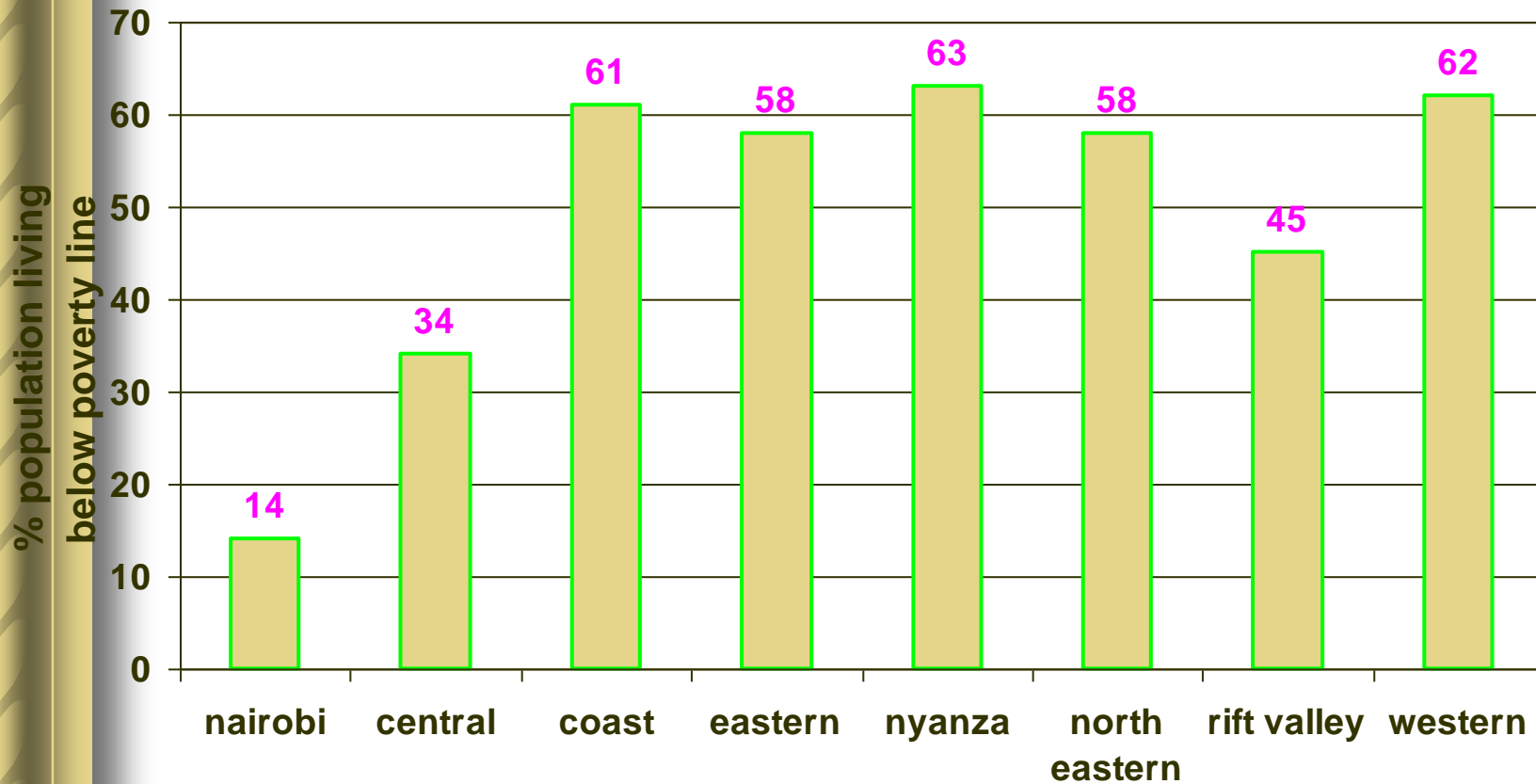
# Distribution of medical officer by population (2003)



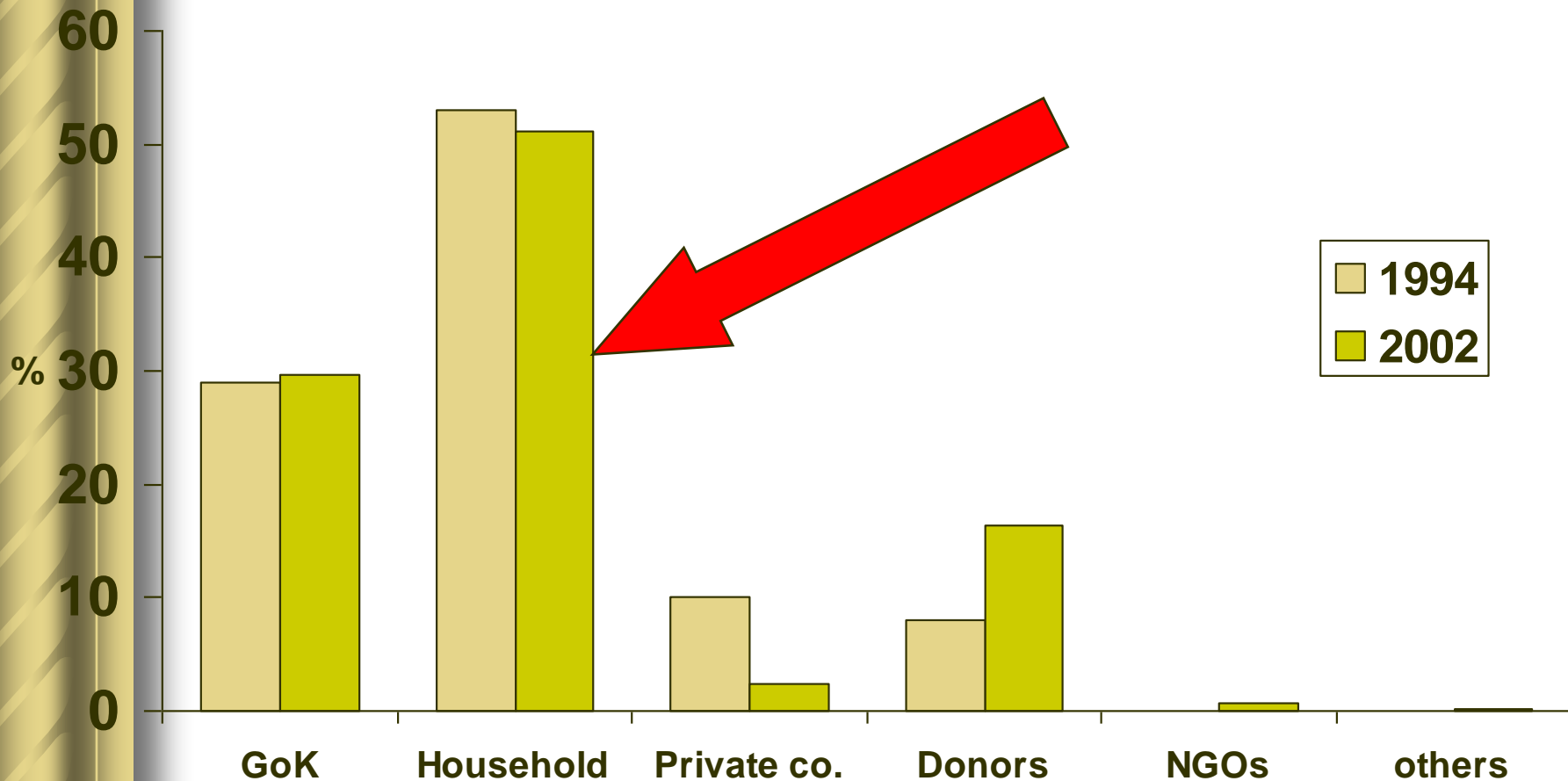
# Trends in MoH actual per capita expenditure in Health



# Regional poverty level



# Health expenditure by source



# Challenges to the physician

- **Health reforms**
- **Leadership role and head of team**
- **Role model**
- **Cost of care and poverty**
- **Ethics in compromised social environment**
- **CPD**
- **Curative care/disease prevention and health promotion**
  - **Perpetual dilemma**

# MOH response

- **Paradigm shift in the NHSSPI**

- **Emphasis on disease prevention and health promotion**
  - **Defining essential health package (KEPH)**
  - **Focus on equity and access to affordable health care**
  - **Building partnership with community**
  - **Strengthen health care support delivery systems**
  - **enhanced sector coordination and partnerships.**
- Disparities in health care in Kentya

# MOH response

- **Actions taken**

- **Increased funding**
- **Employment of staff**
- **Purchase of equipment**
- **Rehabilitation of health facilities**
- **Strengthening of KEMSA to take over procurement functions**
- **Strengthening Regulatory Rapacity**

# MOH response

- **Health sector reforms**
  - **Decentralization**
  - **Enhanced financial flows**
  - **Procurement processes**
  - **Human resource management**
  - **Result based management**
  - **Partner coordination**



# Way forward

- **Physician leadership in the sector**
- **Advocacy for more funding of the sector**
- **Advocacy for reforms in the sector**

# Way forward

- **Advocacy for better human management and development in the sector**
- **Institutionalization of CPD**
- **Promotion of accountability**
- **Promotion of ethics**