

3-13-2015

Kinesio Taping effects on knee extension force among soccer players

Maysa V.G.B. Serra

Universidade de Franca

Edgar Vieira

Department of Physical Therapy, Florida International University, evieira@fiu.edu

Denis Brunt

Department of Physical Therapy, Florida International University, dbrunt@fiu.edu

Marcio F. Goethel

Universidade Estadual de São Paulo

Mauro Goncalves

Universidade Estadual de São Paulo

See next page for additional authors

Follow this and additional works at: http://digitalcommons.fiu.edu/pt_fac



Part of the [Physical Therapy Commons](#)

Recommended Citation

Serra, Maysa V.G.B.; Vieira, Edgar; Brunt, Denis; Goethel, Marcio F.; Goncalves, Mauro; and Quemelo, Paulo R.V., "Kinesio Taping effects on knee extension force among soccer players" (2015). *Department of Physical Therapy Faculty Publications*. Paper 1.
http://digitalcommons.fiu.edu/pt_fac/1

Authors

Maysa V.G.B. Serra, Edgar Vieira, Denis Brunt, Marcio F. Goethel, Mauro Goncalves, and Paulo R.V. Quemelo

Kinesio Taping effects on knee extension force among soccer players

Maysa V. G. B. Serra^{1,2}, Edgar R. Vieira³, Denis Brunt³,
Márcio F. Goethel⁴, Mauro Gonçalves⁴, Paulo R. V. Quemelo^{1,2}

ABSTRACT | Background: Kinesio Taping (KT) is widely used, however the effects of KT on muscle activation and force are contradictory. **Objective:** To evaluate the effects of KT on knee extension force in soccer players. **Method:** This is a clinical trial study design. Thirty-four subjects performed two maximal isometric voluntary contractions of the lower limbs pre, immediately post, and 24 hours after tape application on the lower limbs. Both lower limbs were taped, using K-Tape and 3M Micropore tape randomly on the right and left thighs of the participants. Isometric knee extension force was measured for dominant side using a strain gauge. The following variables were assessed: peak force, time to peak force, rate of force development until peak force, time to peak rate of force development, and 200 ms pulse. **Results:** There were no statistically significant differences in the variables assessed between KT and Micropore conditions ($F=0.645$, $p=0.666$) or among testing sessions (pre, post, and 24h after) ($F=0.528$, $p=0.868$), and there was no statistical significance ($F=0.271$, $p=0.986$) for interaction between tape conditions and testing session. **Conclusion:** KT did not affect the force-related measures assessed immediately and 24 hours after the KT application compared with Micropore application, during maximal isometric voluntary knee extension.

Keywords: Kinesio Taping; athletes; athletic performance; muscle strength; physical therapy.

Clinical trial number: NCT02167126.

HOW TO CITE THIS ARTICLE

Serra MVGB, Vieira ER, Brunt D, Goethel MF, Gonçalves M, Quemelo PRV. Kinesio Taping effects on knee extension force among soccer players. *Braz J Phys Ther.* 2015 Mar-Apr; 19(2):152-158. <http://dx.doi.org/10.1590/bjpt-rbf.2014.0075>

● Introduction

Soccer is the most popular sport in the world. It is played in almost every country, with an estimated 265 million participants¹. Soccer players require a large range of motor skills, as well as the need for rapid information processing and decision-making as play moves between attacking and defending actions. Resistance exercise and different kinds of training (balance and coordination) are responsible for improving velocity and movement coordination, in addition to promoting the balance and functionality needed to achieve significant and visible improvements in strength and muscular performance².

Kinesio Taping (KT) is often used by soccer players to improve performance during training and competitions³. KT is a high-viscosity, adhesive elastic tape that allows the skin to breathe and is water resistant. According to Kase et al.⁴, KT provides constant mechanical/elastic stimulation

of the skin, and its effects are transmitted to deeper tissues through mechanoreceptors found in the epidermis and dermis. Others suggest that KT may modify the muscle activity and increase force⁵⁻⁷. Słupik et al.⁸ evaluated 27 healthy subjects with mean age of 23 (standard deviation [SD] 3.5) years and found an increase in muscle activity of the vastus medialis 24 hours after KT application, and the effect remained for 48 hours after application. Huang et al.⁹ found an increase in triceps surae muscle activity during vertical jump post KT application in 31 healthy adults (19 males and 12 females) with mean age of 25 (SD 4) years. However, other studies found that applying KT did not alter knee extension force when applied over the quadriceps muscle in healthy athletes¹⁰⁻¹². Also, KT did not improve jump performance or balance in healthy college athletes¹³. In addition, three recent systematic reviews identified few high-quality studies and those studies provided

¹Departamento de Promoção da Saúde, Universidade de Franca (UNIFRAN), Franca, SP, Brazil

²Departamento de Fisioterapia, UNIFRAN, Franca, SP, Brazil

³Department of Physical Therapy, Florida International University, Miami, FL, United States

⁴Departamento de Educação Física, Instituto de Biociências, Universidade Estadual de São Paulo (UNESP), Rio Claro, SP, Brazil

Received: Jun. 06, 2014 Revised: Sep. 16, 2014 Accepted: Oct. 21, 2014

insufficient evidence to support the use of KT in clinical conditions¹⁴⁻¹⁶.

Despite being commonly used, the results of the studies that evaluated the effects of KT on muscle activation and force in athletes are contradictory. It has been proposed that KT application may cause a small immediate increase in muscle strength by pulling on the fascia, stimulating increased muscle contraction^{3,4}. However, empirical evidence is lacking and further evaluation of the effects of KT application on force exertion is needed¹⁷. Therefore, the objective of this study was to evaluate the effect of KT on knee extension force in soccer players. The study

hypothesis was that KT application would improve knee extension force in soccer players.

Method

Subjects

This was a clinical trial. Figure 1 presents the study flow diagram. The participants were recruited from the male and female professional soccer teams of the city of Franca, SP, Brazil. Forty-four players were invited to participate in study. The inclusion criteria were to be a soccer player for more than one year and be at least 18 years old. The exclusion

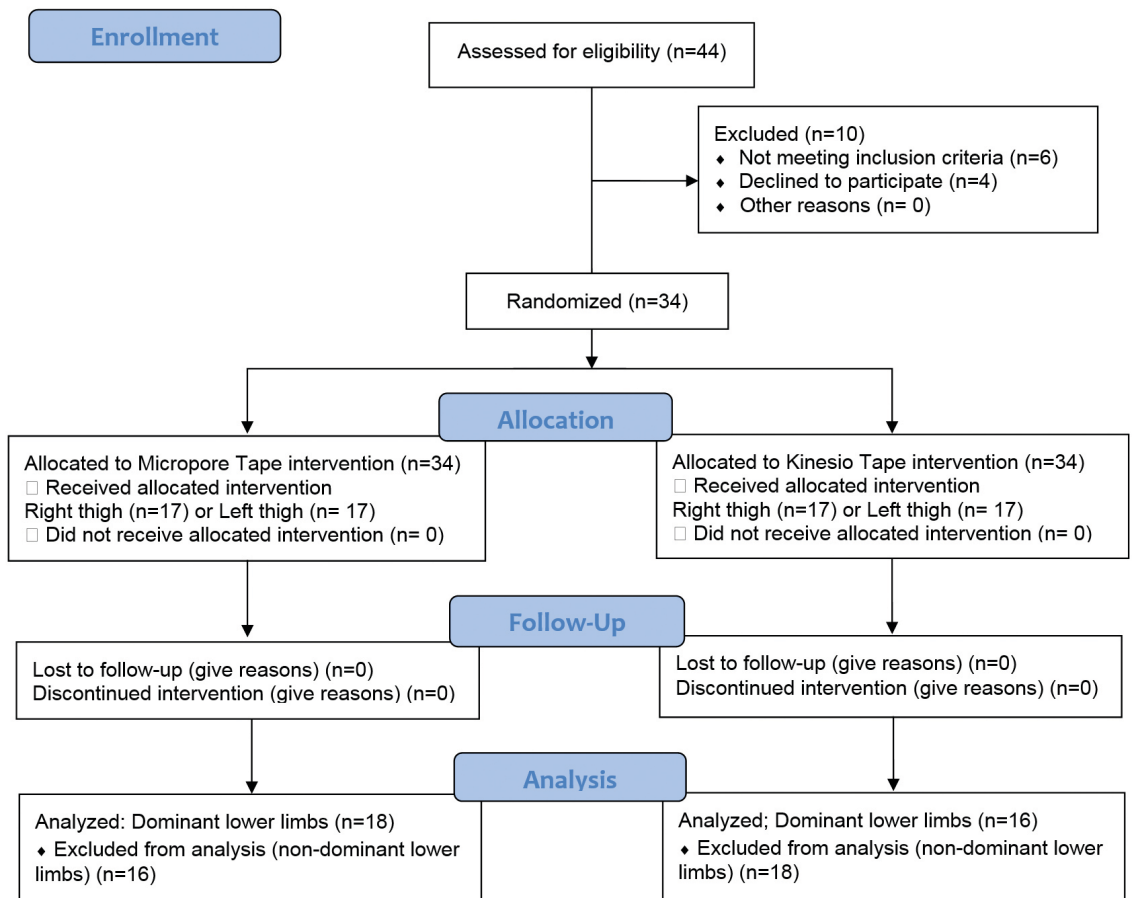


Figure 1. Flow diagram of soccer players during of the study.

criterion was having lower limb injuries at the time of testing. Thirty-four (77%) professional soccer players (20 males and 14 females) were eligible and volunteered to participate in the study. The sample size was calculated using GPower 3.0 software and at least 30 subjects would be needed to have a power of 0.82 to identify differences between the two groups. The study was approved by the institutional review board from the Universidade de Franca (UNIFRAN), Franca, SP, Brazil (protocol # 009/11) and all participants signed an informed consent form.

Equipment

The isometric knee extension force was collected using a strain gauge (EMG System do Brasil Ltda.[®]) with a measuring range from 0 to 200 kg at 1000 Hz. The data was filtered with a fourth-order Butterworth low-pass filter and cut-off frequency of 15 Hz, obtained through residual analysis. The equipment (strain gauge) was attached to the extensor chair lever arm and the chair's legs.

Procedures and data collected

Force testing: The study was conducted in a university laboratory setting. The data was collected before the athletes' morning training. The participants were seated on a knee extensor chair, with the back straight, arms crossed, and knees bent at 90°¹⁸. Velcro straps/belts were used to stabilize the participants. The lever arm of the extensor chair was positioned near the ankle above the malleoli. The testing position followed the procedures proposed for rectus femoris muscle function test by Kendall et al.¹⁹. The participants performed two five-second maximal isometric voluntary knee extension trials²⁰ using each of the lower limbs during three testing sessions: pre, immediately post, and 24 hours after application of the tape (KT and Micropore conditions). A rest interval of 2 minutes was given to the participants between trials to prevent fatigue²¹. After the testing session, the participants were instructed to continue their normal activities, but were asked not to wash or remove the tapes. Twenty-four hours later, the participants returned to the lab for one additional testing session following the same procedures. All 34 soccer players completed all tests with both lower limbs (KT and Micropore conditions) during all testing sessions (pre, post and 24h after tape application).

Tape application: After the pre-testing session (no tape condition), KT (K-Tape[®] brand) was applied on the skin over the rectus femoris muscle on one limb and 3M Micropore[®] (placebo tape) was

applied on the contralateral limb. First, the sites of tape placement were shaved and cleaned with 70% rubbing alcohol. The tapes were randomly placed on the right and left lower limbs over the quadriceps muscle. Therefore, both limbs were taped, one side with Micropore and the other with KT in random order among participants. Half of the participants (n=17) had KT applied to the left thigh and the other half to the right thigh (n=17). KT was applied using the "V" technique, the knee was positioned at 45° of flexion, the origin of both tapes was located 10 cm below the anterior-superior iliac spine with one tape going laterally and one medially to the rectus femoris muscle belly, passing around the patella and finishing on the tibial tuberosity^{22,23}. The same technique was used for the Micropore tape on the contralateral limb, but because it is not elastic, the knee joint was not crossed and the end points were the medial and lateral aspects of the patella (Figure 2). After the final testing session the tapes were removed and the skin was cleaned with rubbing alcohol.



Figure 2. Application of Kinesio Tape (right lower limb) and 3M Micropore[®] (left lower limb).

Data analysis

After data collection, the results for each subject's dominant side were divided into KT group (n=16; dominant lower limb) and Micropore tape group (n=18 dominant lower limb). The mean force values were calculated just for the dominant side for each condition (pre, post and 24 hours after tape application) and each tape (KT and Micropore).

We assessed the following force-related variables:

- Peak force: maximum amount of force during the trials normalized by each participant's body mass;
- Time to peak force: time in seconds elapsed between onset of force and peak of force;
- Rate of force development until peak force: rate of force increase until peak force was reached;
- Time to peak rate of force development: time in seconds when the peak rate of force development was observed;
- 200 ms pulse: Force/time plot area for the initial 200 ms after force onset.

Table 1. Description of the participants.

Variables	Females (N=14)	Males (N=20)	Total (N=34)
Age (years old)	24 (4)	22 (3)	23 (1)
Height (cm)	165 (4)	180 (5)	172 (10)
Weight (Kg)	59 (6)	77 (7)	68 (12)
BMI (Kg/m ²)	22 (2)	24 (1)	23 (2)
Soccer experience (years)	5 (2)	4 (2)	4 (1)

Mean and (standard deviation).

Table 2. Comparison of the force-related variables measured during maximum voluntary isometric knee extension testing sessions completed pre, post, and 24h after hours after kinesio tape (KT) and Micropore tape application.

Force-related variable	Pre-Application		Post-Application		24h After Application	
	Micropore*	KT*	Micropore	KT	Micropore	KT
Peak force	1.03 (0.19) [0.93-1.12]	1.04 (0.18) [0.94-1.13]	1.02 (0.18) [0.93-1.11]	1.03 (0.17) [0.94-1.11]	0.95 (0.21) [0.85-1.05]	1.01 (0.15) [0.92-1.09]
Time to peak force	3.39 (0.96) [2.91-3.86]	2.97 (1.08) [2.40-3.55]	3.35 (0.94) [2.88-3.81]	3.21 (1.02) [2.66-3.75]	3.19 (1.08) [2.65-3.73]	3.32 (0.99) [2.78-3.84]
Time to peak rate of force development	0.10 (0.05) [0.08-0.12]	0.08 (0.03) [0.06-0.10]	0.11 (0.06) [0.07-0.13]	0.10 (0.05) [0.07-0.13]	0.12 (0.06) [0.08-0.14]	0.10 (0.04) [0.07-0.012]
Rate of force development until peak	2.4 (1.6) [1.59-3.22]	3 (2.2) [1.79-4.20]	2.4 (2.1) [1.35-3.51]	2.6 (1.5) [1.85-3.46]	2.2 (2.2) [1.10-3.28]	2.67 (1.5) [1.88-3.46]
200 ms pulse	76.6 (22.3) [65.53-87.72]	84.5 (34) [66.36-102.6]	83.7 (26.3) [70.61-96.75]	82.1 (21.3) [70.71-93.43]	76.1 (21.1) [65.65-86.65]	87.1 (25.3) [73.63-100.6]

*The pre-application values are from the legs without tape that subsequently received the respective types of tape. Mean, (standard deviation) and [95% CI - Confidence Interval].

Statistical analysis

Descriptive statistics (mean and SD) were calculated. The normalized data for males and females were combined because there were no differences between the genders after normalization. The variables were compared between KT and Micropore conditions, and among testing sessions (pre, post, and 24h after), and the interaction effects between tape conditions and testing sessions (time) were assessed using repeated measure MANOVA. All analyses were conducted using *Statistica* (version 8.0 – StatSoft, Inc. 2007), with the level of significance set at 0.05.

Results

The participants' demographics are presented in Table 1 by gender. The force-related variables measured during maximum isometric knee extension are presented in Table 2. The 200 ms pulse for 24 hours after KT application (M=87; [SD=25.3]) tended to be higher with KT than with Micropore tape (M=76.1; [SD=21.1]). However, there were no statistically significant differences between the KT and Micropore conditions ($F=0.645$, $p=0.666$) or among testing sessions (pre, post, and 24h after) ($F=0.528$, $p=0.868$), and there was no significant interaction between tape condition and testing session ($F=0.271$, $p=0.986$) (Table 3).

Discussion

Immediately after KT application, the rate of force development until peak tended to be slightly higher. In the same way, it was observed that 24 hours

Table 3. Multivariate tests of significance, effect sizes, and powers for tape conditions (Micropore vs Kinesio Taping), time sessions (pre, post, and 24h hours) and interaction effect between tape and time using MANOVA-repeated measures.

Variables	Wilks Test	F	P	Partial Eta-squared	Non-centrality	Power ^a
Types of Tape	0.966140	0.645	0.6660	0.0338	3.22	0.2249
Time sessions	0.944951	0.528	0.8688	0.0279	5.28	0.2695
Interaction effect of the Tape vs Time	0.971135	0.271	0.9866	0.0145	2.71	0.1463

F Statistic; P values; ^a= alpha= 0.05.

after KT application the rate of force development until peak and 200 ms pulse tended to be slightly higher than Micropore tape. However, KT did not significantly change knee extension force in healthy athletes immediately post or 24 h after application in relation to pre-application (no tape condition), and there were no differences between the side with KT and the side with Micropore tape, and there was no interaction between kind of tape and time sessions by MANOVA test. Other studies also did not find significant differences immediately after KT application²³⁻²⁵. Chang et al.²⁶ found no change in grip strength immediately after applying KT in healthy people, but found better force reproducibility among subjects with KT. Lins et al.²⁷ evaluated the effects of KT application on the activity of the vastus lateralis, rectus femoris, and vastus medialis muscles of healthy women who exercised and found no significant effects. Słupik et al.⁸ evaluated the effects of applying KT over the vastus medialis and, similarly to us, found no change in muscle activity 10 minutes post-taping but, unlike us, they found increased muscle activity 24 hours after KT application. The difference between these results may be due to different forms and tensions of KT application. Different KT techniques can provide different tactile stimuli intensities⁴.

In this study we need to considerate some limitations: the participants were not evaluated by a blinded assessor; the isometric knee extension was evaluated only at 90°; the sample was small. On the other hand, we evaluated healthy professional soccer players, which can be considered a good and homogeneous sample.

Huang et al.⁹ evaluated thirty-one healthy adults and found increased stabilization (based on ground reaction forces) and protection (increased muscle activity/EMG), and decreased ankle joint motion (using a video-based motion analysis system) during vertical jumps after KT application. Also differently from our findings, Vithoulka et al.²⁸ found increased eccentric knee extension force in healthy adults

post KT application over the skin of the quadriceps. The difference between the results may be due to differences in the populations evaluated and testing procedures (e.g. contraction duration and type of contraction), but there may be differences between KT effects during isometric and isotonic/isokinetic testing. Future studies should evaluate this hypothesis.

It must be taken into account that our sample was composed of soccer players without injuries. Most previous studies included injured subjects undergoing rehabilitation^{11,22,29}. Hsu et al.²² found significant improvements in scapular motion in baseball players with shoulder impingement after KT application. Thelen et al.¹¹ evaluated subjects with rotator cuff tendonitis and found decreased pain immediately after KT application. Thus, KT may have some beneficial effects in patients with motion disorders and pain, even though we found it did not increase knee extension force in healthy subjects.

Kim and Lee²³ evaluated the effectiveness of KT to prevent injury and improve the performance of 8 horse racing jockeys. The participants performed knee flexion/extension at 60°/sec and 180°/sec in an isokinetic dynamometer before and after KT application, and significant differences were found. Our study used a strain gauge and evaluated only isometric knee extension at 90° of flexion. Thus, it is possible that KT has an effect during motion but not during isometric contractions. Further studies are also needed to evaluate this other hypothesis.

Although it has been theorized that KT increases circulation and subsequently improving muscle function, a recent study with sixty-one healthy people showed that KT application did not affect circulation or volume of the gastrocnemius muscle and does not enhance anaerobic muscle function³⁰. Another physiological theory about KT effects is motoneuron activation. A push start on a motoneuron propagates in the axon membrane and affects muscle, giving rise to a flow-reversing ionic resting membrane potential, causing the muscular action potential^{31,32}.

Although KT can provide sensory stimuli to the skin and possibly to the underlying fascia through interconnections between the connective tissues, resulting in better motor response and increased muscle contraction^{4,8,22}, the changes that we found were not significant even though the variability was not high, showing that even after 24 hours the parameters remained the same or with non-significant changes. The lack of differences between the sides with KT and Micropore tape indicate that any effect may be due to the skin stimulation independently of the elasticity of the tape or due to placebo effects. Thus, clinically KT should not be used by healthy professional athletes with the aim of improving force.

● Conclusion

KT did not affect the force-related measures assessed immediately and 24 hours after the KT application compared with Micropore application, during maximal isometric voluntary knee extension trials performed by healthy professional athletes.

● Acknowledgments

For the support of Fundação de Apoio à Pesquisa do Estado de São Paulo (FAPESP Process: 2011/22408-6) and Conselho Nacional de Desenvolvimento Científico e Tecnológico (CNPq), Brazil. Thanks to K-Tape Company that supplied the tapes and Associação Atlético Francana for the opportunity to conduct studies with their athletes. To Pedro Netto Bernardino and Karoline Souza Moreira who helped with the data collection.

● References

1. Fédération Internationale de Football Association - FIFA. [Internet]. 2007 [cited 2014 Mar]. Available from: http://www.fifa.com/mm/document/fifafacts/bcoffsurv/emaga_9384_10704.pdf.
2. Cunha R, Carregaro RL, Martorelli A, Vieira A, Oliveira AB, Bottaro M. Effects of short-term isokinetic training with reciprocal knee extensors agonist and antagonist muscle actions: a controlled and randomized trial. *Braz J Phys Ther.* 2013;17(2):137-45. <http://dx.doi.org/10.1590/S1413-35552012005000077>. PMID:23778768.
3. Nuno S, Atalaia T, Rebelo P, Carolino E, Vaz J. Análise da influência da aplicação de kinesio tape na ativação muscular durante um passe de futsal. *Saúde Tecnol.* 2014;11:34-40.
4. Kase K, Wallis J, Kase T. *Clinical Therapeutic Applications of the Kinesio Taping Method.* Albuquerque: Kinesio Taping Association; 2003.
5. Fracocchi G, Di Mattia F, Rossi R, Mangone M, Santilli V, Paoloni M. Influence of Kinesio Taping applied over biceps brachii on isokinetic elbow peak torque. A placebo controlled study in a population of young healthy subjects. *J Sci Med Sport.* 2013;16(3):245-9. <http://dx.doi.org/10.1016/j.jsams.2012.06.003>. PMID:22771110
6. MacGregor K, Gerlach S, Mellor R, Hodges PW. Cutaneous stimulation from patella tape causes a differential increase in vasti muscle activity in people with patellofemoral pain. *J Orthop Res.* 2005;23(2):351-8. <http://dx.doi.org/10.1016/j.orthres.2004.07.006>. PMID:15734248
7. Yoshida A, Kahanov L. The effect of kinesio taping on lower trunk range of motions. *Res Sports Med.* 2007;15(2):103-12. <http://dx.doi.org/10.1080/15438620701405206>. PMID:17578750
8. Slupik A, Dwornik M, Białoszewski D, Zych E. Effect of Kinesio Taping on bioelectrical activity of vastus medialis muscle. Preliminary report. *Ortop Traumatol Rehabil.* 2007;9(6):644-51. PMID:18227756.
9. Huang CY, Hsieh TH, Lu SC, Su FC. Effect of the Kinesio tape to muscle activity and vertical jump performance in healthy inactive people. *Biomed Eng Online.* 2011;10(1):70. <http://dx.doi.org/10.1186/1475-925X-10-70>. PMID:21831321
10. Fu TC, Wong AM, Pei YC, Wu KP, Chou SW, Lin YC. Effect of Kinesio taping on muscle strength in athletes-a pilot study. *J Sci Med Sport.* 2008;11(2):198-201. <http://dx.doi.org/10.1016/j.jsams.2007.02.011>. PMID:17588814
11. Thelen MD, Dauber JA, Stoneman PD. The clinical efficacy of kinesio tape for shoulder pain: a randomized, double-blinded, clinical trial. *J Orthop Sports Phys Ther.* 2008;38(7):389-95. <http://dx.doi.org/10.2519/jospt.2008.2791>. PMID:18591761
12. Winter AD. *Biomechanics and motor control of human movement.* 2nd ed. Waterloo: Wiley Interscience Publication; 1990.
13. Nunes GS, Noronha M, Cunha HS, Ruschel C, Borges NG Jr. Effect of kinesio taping on jumping and balance in athletes: a crossover randomized controlled trial. *J Strength Cond Res.* 2013;27(11):3183-9. <http://dx.doi.org/10.1519/JSC.0b013e31828a2c17>. PMID:23439339
14. Morris D, Jones D, Ryan H, Ryan CG. The clinical effects of Kinesio® Tex taping: A systematic review. *Physiother Theory Pract.* 2013;29(4):259-70. <http://dx.doi.org/10.3109/09593985.2012.731675>. PMID:23088702
15. Mostafavifar M, Wertz J, Borchers J. A systematic review of the effectiveness of kinesio taping for musculoskeletal injury. *Phys Sportsmed.* 2012;40(4):33-40. <http://dx.doi.org/10.3810/psm.2012.11.1986>. PMID:23306413
16. Pereira PCS, Costa LCM, Hespanhol LCH, Lopes AD, Costa LOP. Current evidence does not support the use of Kinesio Taping in clinical practice: a systematic review. *J Physioth.* 2014. <http://dx.doi.org/10.1016/j.jphys.2013.12.008>.
17. Williams S, Whatman C, Hume PA, Sheerin K. Kinesio taping in treatment and prevention of sports injuries: a meta-analysis of the evidence for its effectiveness. *Sports Med.* 2012;42(2):153-64. <http://dx.doi.org/10.2165/11594960-000000000-00000>. PMID:22124445
18. Newman SA, Jones G, Newham DJ. Quadriceps voluntary activation at different joint angles measured

- by two stimulation techniques. *Eur J Appl Physiol*. 2003;89(5):496-9. <http://dx.doi.org/10.1007/s00421-003-0836-0>. PMID:12712353
19. Kendall FP, McCreary EK, Provance PG, Rodgers MM, Romani WA. *Muscles: testing and function with posture and pain*. 5th ed. Lippincott: Williams & Wilkins; 2005.
 20. Pereira R, Machado M, Ribeiro W, Russo AK, de Paula A, Lazo-Osorio RA. Variation of explosive force at different times of day. *Biol Sport*. 2011;28(1):3-9. <http://dx.doi.org/10.5604/935861>.
 21. Bueno RC, Fortes JBP, Camacho SP. Eletromiografia do músculo quadríceps-femural: influência do treinamento específico no disparo neuromotor periférico. *Mov Percep*. 2007;8:55-70.
 22. Hsu YH, Chen WY, Lin HC, Wang WTJ, Shih YF. The effects of taping on scapular kinematics and muscle performance in baseball players with shoulder impingement syndrome. *J Electromyogr Kinesiol*. 2009;19(6):1092-9. <http://dx.doi.org/10.1016/j.jelekin.2008.11.003>. PMID:19147374
 23. Kim H, Lee B. The effects of kinesio tape on isokinetic muscular function of horse racing jockeys. *J Phys Ther Sci*. 2013;25(10):1273-7. <http://dx.doi.org/10.1589/jpts.25.1273>. PMID:24259774
 24. Vercelli S, Sartorio F, Foti C, Colletto L, Virton D, Ronconi G, et al. Immediate effects of kinesiotaping on quadriceps muscle strength: a single-blind, placebo-controlled crossover trial. *Clin J Sport Med*. 2012;22(4):319-26. <http://dx.doi.org/10.1097/JSM.0b013e31824c835d>. PMID:22450591
 25. Wong OM, Cheung RT, Li RC. Isokinetic knee function in healthy subjects with and without Kinesio taping. *Phys Ther Sport*. 2012;13(4):255-8. <http://dx.doi.org/10.1016/j.ptsp.2012.01.004>. PMID:23068902
 26. Chang HY, Chou KY, Lin JJ, Lin CF, Wang CH. Immediate effect of forearm Kinesio taping on maximal grip strength and force sense in healthy collegiate athletes. *Phys Ther Sport*. 2010;11(4):122-7. <http://dx.doi.org/10.1016/j.ptsp.2010.06.007>. PMID:21055705
 27. Lins CA, Neto FL, Amorim AB, Macedo LB, Brasileiro JS. Kinesio Taping(®) does not alter neuromuscular performance of femoral quadriceps or lower limb function in healthy subjects: randomized, blind, controlled, clinical trial. *Man Ther*. 2013;18(1):41-5. <http://dx.doi.org/10.1016/j.math.2012.06.009>. PMID:22796389
 28. Vithoulka I, Beneka A, Malliou P, Aggelousis N, Karatsolis K, Diamantopoulos K. The effects of Kinesio-Taping® on quadriceps strength during isokinetic exercise in healthy non athlete women. *Isokinet Exerc Sci*. 2010;18:1-6.
 29. Hwang-Bo G, Lee JH. Effects of kinesio taping in a physical therapist with acute low back pain due to patient handling: a case report. *Int J Occup Med Environ Health*. 2011;24(3):320-3. <http://dx.doi.org/10.2478/s13382-011-0029-8>. PMID:21845524
 30. Stedje HL, Kroskie RM, Docherty CL. Kinesio taping and the circulation and endurance ratio of the gastrocnemius muscle. *J Athl Train*. 2012;47(6):635-42. <http://dx.doi.org/10.4085/1062-6050-47.5.15>. PMID:23182011
 31. Fox EL, Bowers RX, Foss ML. *Bases fisiológicas da educação física e dos desportos*. 4. ed. Rio de Janeiro: Guanabara Koogan; 1991.
 32. Guyton AC, Hall JE. *Tratado de fisiologia médica*. 11. ed. Rio de Janeiro: Elsevier Brasil; 2006.

Correspondence

Paulo Roberto Veiga Quemelo

Universidade de Franca
Departamento de Promoção da Saúde
Avenida Armando Salles de Oliveira, 201
CEP 14404-600, Franca, SP, Brazil
e-mail: pqquemelo@hotmail.com