

Engage your Audience!

Using Audience Response Systems
in Library Instruction

CAROLE CRAGG

Associate Director,
Bethel University Library

How to save
your life...

Or at least your grade!

Even the "Fugitive" had time for
Research!

Which of these statements is [true](#)?

1. "And" or "*" will broaden your search
2. "And" or "*" will narrow your search
- ✓ 3. "Or" or "*" will broaden your search
4. "Or" or "*" will narrow your search

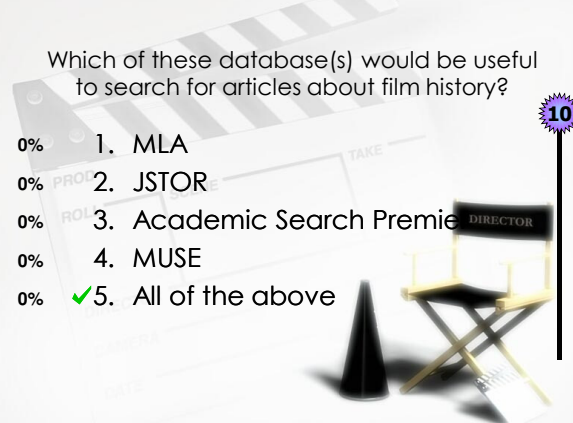
Which search will get the
most, appropriate results?

- 0% 1. Racism and motion pictures
- 0% 2. Racism or motion pictures
- ✓ 0% 3. Racism and (motion picture* or film* or cinema)
- 0% 4. Racism or (motion picture* or film* or cinema)
- 0% 5. Racism and (motion picture* and film* and cinema)

10

Which of these database(s) would be useful to search for articles about film history?

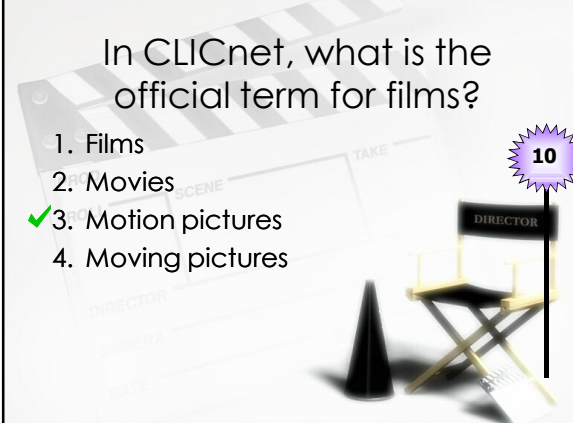
- 0% 1. MLA
- 0% 2. JSTOR
- 0% 3. Academic Search Premier
- 0% 4. MUSE
- 0% 5. All of the above



10

In CLICnet, what is the official term for films?

- 1. Films
- 2. Movies
- 3. Motion pictures
- 4. Moving pictures



10

Which program will help format your references for you?

- 1. RefWorks
- 2. CitationStation
- 3. EBSCO
- 4. BibBuddy
- 5. CSA



10

Welcome
Royal Entrance!

BU Library & Information Commons

Get in Teams of 2-3

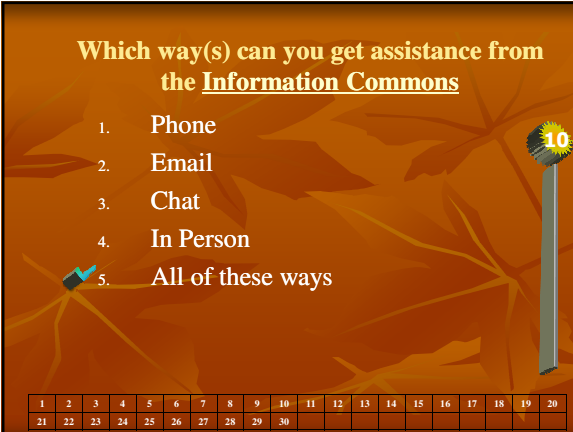
Discuss your answer

Click the corresponding number on the response pad

When the ball drops you'll only have 10 more seconds to answer!

Which way(s) can you get assistance from the Information Commons?

- 1. Phone
- 2. Email
- 3. Chat
- 4. In Person
- 5. All of these ways



10

1	2	3	4	5	6	7	8	9	10	11	12	13	14	15	16	17	18	19	20	
21	22	23	24	25	26	27	28	29	30											

What can't you check out from the Library?

- 0% 1. DVD player
- 0% 2. LP player
- 0% 3. CD player
- 0% 4. Laptop
- 0% 5. Jump drive
- 0% 6. Videos & DVDs
- 0% 7. Video Cameras
- 0% 8. Boom boxes, headsets, flip charts

10

1	2	3	4	5	6	7	8	9	10	11	12	13	14	15	16	17	18	19	20	
21	22	23	24	25	26	27	28	29	30											

How many journals/periodicals are available full-text online or in the Bethel University Library?

- 1,762
- 4,839
- 9,756
- 12,384
- 35,849

10

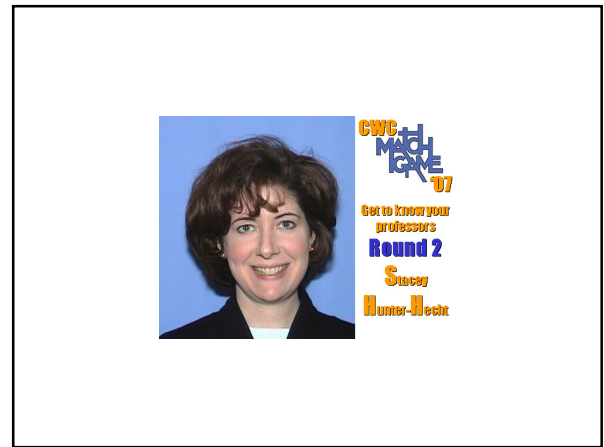
1	2	3	4	5	6	7	8	9	10	11	12	13	14	15	16	17	18	19	20	
21	22	23	24	25	26	27	28	29	30											

What's the best way to find out how to move citations from a database to RefWorks?

- Email Human Resources
- Look at "Guides and Tutorials" on BLink>Library>AskUs
- Call x6500
- Contact the Information Commons Reference Desk
- Both 2 and 4

10

1	2	3	4	5	6	7	8	9	10	11	12	13	14	15	16	17	18	19	20	
21	22	23	24	25	26	27	28	29	30											



From which College did Stacey Hunter-Hecht receive her undergraduate degree?

1. Penn State University
- 0% 2. University of California - Berkley
- 0% 3. Gordon College
- 0% 4. University of Pittsburg


1	2	3	4	5	6	7	8	9	10	11	12	13	14	15	16	17	18	19	20	
21	22	23	24	25	26	27	28	29	30											

In High School Stacey was:

1. a drum major in the marching band
- 0% 2. a hockey goalie
- 0% 3. an all-conference point guard
- 0% 4. Miss Teen Pennsylvania

1	2	3	4	5	6	7	8	9	10	11	12	13	14	15	16	17	18	19	20	
21	22	23	24	25	26	27	28	29	30											

LYNDI FINIFROCK
 Reference Librarian,
 Bethel University Library

BETHEL UNIVERSITY *Library* 
Your portal for academic resources

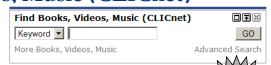
Welcome to the Bethel University Library and Information Commons

Take the Library Challenge!

Challenge #1:

Finding books, videos, music

Using the **Find Books, Videos, Music (CLICnet)** search box,



Search for **pirates of the caribbean dead man's chest**
 After your search results display, click on the **first title**

What **number** will help you find it in the library?

✓0% **Call Number: 791.4372 P667cd 2006**
 0% **ISBN Number: 0788873083**
 0% **OCLC Number: ocm71227664**
 0% **Pub Number: 786936720983**

1	2	3	4	5	6	7	8	9	10	11	12	13	14	15	16	17	18	19	20
21	22	23	24	25	26	27	28	29	30										

Your ID card is also your library card.

0% **★ 1. True**
 0% **2. False**

Bonus Point!

1	2	3	4	5	6	7	8	9	10	11	12	13	14	15	16	17	18	19	20
21	22	23	24	25	26	27	28	29	30										

Challenge Wrap-Up:
Finding Books, Videos, Music

- Search **CLICnet**
- Use **call number** to locate material
- Check out with your **ID card**
- Use **barcode number** to request from other CLIC libraries

JENNIFER BORKENHAGEN
 Circulation Librarian/Interlibrary Loan/Reference,
 Concordia University Library Technology Center

Library

- Faculty workshops & demos
- Conference presentation
- Student worker training
- First Year Seminar & Communication classes

Which types of assessment have you used to assess information literacy at your institution?

1. None
2. Student and faculty surveys
3. Student and faculty focus groups
4. Evaluations from students and faculty
5. Combination of surveys, focus groups, and evaluations

Faculty

- Quizzes
- Gauge prior knowledge & comprehension
- Participatory

Students

- Class presentations
- Educational technology demonstrations

SUE GRAY
 Reference/Circulation Librarian,
 College of St. Catherine Library

BETSY DADABO
 Library Technology Specialist,
 Bethel University Library

What to look for in Audience Response Systems

- Software/Hardware Requirements
 - Mode of input options – computer program, cell phone applications, clickers
- Integration with other programs (i.e. Blackboard/WebCT)
- Cost (about \$1000 for 30 receivers for TP)
- Target Demographic of Company (business/education)

Implementation

- Cost can be defrayed by getting other departments involved or by having students purchase own receivers
- Coordinate with IT department so that software is installed on all necessary classrooms
- Have a representative from the company come and demonstrate the use of the product
- Hold training sessions for staff and other interested parties

Audience Response Systems

- **OptionFinder**
<http://www.optiontechnologies.com>
 - **einstruction (formerly Interwrite Learning)**
<http://www.einstruction.com/>
 - **Turning Point** <http://www.turningtechnologies.com/>
 - **Senteo**
<http://www.chariotgroup.com/smart/senteo.html>
- Comparison Site**
www.polleverywhere.com/ars-comparison

Contact Us!

- Carole Cragg, Associate Director, Bethel University Library
 - c-cragg@bethel.edu
 - 651-638-6065
- Lyndi Finifrock, Reference Librarian, Bethel University Library
 - l-finifrock@bethel.edu
 - 651-635-8539
- Betsy Dadabo, Library Technology Specialist, Bethel University Library
 - dadbet@bethel.edu
 - 651-635-8538
- Sue Gray, Reference/Circulation Librarian, College of St. Catherine Library
 - sgray@stkate.edu
 - 651-690-7898
- Jennifer Borkenhagen, Circulation Librarian/Interlibrary Loan/Reference, Concordia University Library Technology Center
 - borkenhagen@csp.edu
 - 651-641-8770