



Climatic variables and ecological modelling data for birds, amphibians and reptiles in the Transboundary Biosphere Reserve of Meseta Ibérica (Portugal-Spain)

João C. Campos[‡], Sara Rodrigues[‡], Teresa Freitas[§], João A. Santos[§], João P. Honrado[‡], Adrián Regos[|]

[‡] InBIO/CIBIO - Centro de Investigação em Biodiversidade e Recursos Genéticos, Campus Agrário de Vairão, Rua Padre Armando Quintas, n° 7, 4485-661 Vairão, Porto, Portugal

[§] CITAB - Centro de Investigação e de Tecnologias Agro-Ambientais e Biológicas, Universidade de Trás-os-Montes e Alto Douro, Apartado 1013, 5001-801, Vila Real, Portugal

[|] Departamento de Zooloxía, Xenética e Antropoloxía Física, Universidade de Santiago de Compostela, 15782, Santiago de Compostela, Spain

Corresponding author: João C. Campos (jc_campos@cibio.up.pt)

Academic editor: Etielle Andrade

Received: 25 Mar 2021 | Accepted: 12 May 2021 | Published: 24 Jun 2021

Citation: Campos JC, Rodrigues S, Freitas T, Santos JA, Honrado JP, Regos A (2021) Climatic variables and ecological modelling data for birds, amphibians and reptiles in the Transboundary Biosphere Reserve of Meseta Ibérica (Portugal-Spain). Biodiversity Data Journal 9: e66509. <https://doi.org/10.3897/BDJ.9.e66509>

Abstract

Background

Climate change has been widely accepted as one of the major threats for global biodiversity and understanding its potential effects on species distribution is crucial to optimise conservation planning in future scenarios under global change. Integrating detailed climatic data across spatial and temporal scales into species distribution modelling can help to predict potential changes in biodiversity. Consequently, this type of data can be useful for developing efficient biodiversity management and conservation planning. The provision of such data becomes even more important in highly biodiverse regions, currently suffering from climatic and landscape changes. The Transboundary Biosphere Reserve of

Meseta Ibérica (BRMI; Portugal-Spain) is one of the most relevant reserves for wildlife in Europe. This highly diverse region is of great ecological and socio-economical interest, suffering from synergistic processes of rural land abandonment and climatic instabilities that currently threaten local biodiversity.

Aiming to optimise conservation planning in the Reserve, we provide a complete dataset of historical and future climate models (1 x 1 km) for the BRMI, used to build a series of distribution models for 207 vertebrate species. These models are projected for 2050 under two climate change scenarios. The climatic suitability of 52% and 57% of the species are predicted to decrease under the intermediate and extreme climatic scenarios, respectively. These models constitute framework data for improving local conservation planning in the Reserve, which should be further supported by implementing climate and land-use change factors to increase the accuracy of future predictions of species distributions in the study area.

New information

Herein, we provide a complete dataset of state-of-the-art historical and future climate model simulations, generated by global-regional climate model chains, with climatic variables resolved at a high spatial resolution (1 × 1 km) over the Transboundary Biosphere Reserve of Meseta Ibérica. Additionally, a complete series of distribution models for 207 species (168 birds, 24 reptiles and 15 amphibians) under future (2050) climate change scenarios is delivered, which constitute framework data for improving local conservation planning in the reserve.

Keywords

biodiversity, climate change, climate models, conservation, Iberian Peninsula, species distribution models.

Introduction

Understanding how species are globally distributed and identifying the key factors that influence their spatial and temporal distribution patterns are essential first steps for solid biodiversity conservation planning (Whittaker et al. 2005). Species distributions are primarily shaped by historical and contemporary events, in which environmental and landscape factors play a decisive role in determining spatial and temporal distribution status and trends (Nogués-Bravo et al. 2018). In this regard, climate change has been widely acknowledged as one of the major current and future threats for global biodiversity (Sippel et al. 2020, Raven and Wagner 2021), causing geographical distribution shifts of a large number of species and, consequently, leading to species extinction events, the disruption of entire ecosystems and also deprivation of human well-being (Pecl et al. 2017, Turner et al. 2020). As such, providing detailed and informative climatic data at both spatial

and temporal scales is paramount for better predicting potential environmental impacts on biodiversity and associated ecosystems, which ultimately support optimised conservation planning under global change (Newbold 2018).

One of the most important tools for assisting efficient management and biodiversity conservation planning is species distribution modelling (SDMs; Araújo et al. 2019). These methods derive statistical relationships between geographical species occurrences and environmental predictors (such as climatic factors), which can be consequently used to spatially and temporally predict species distributions under different environmental scenarios (Guisan et al. 2017). In order to efficiently support biodiversity conservation under future environmental conditions, the combined effect of landscape, concrete land cover information and climate factors must be taken into account to improve the model predictive accuracy of potential future changes of species distributions (Triviño et al. 2018, Pausas and Millán 2019).

Improving the predictive power of SDMs becomes paramount in highly biodiverse regions currently under severe climatic and landscape changes. In Europe, Mediterranean rural areas are perfect examples of highly diverse regions from an ecological and socio-economical point of view, suffering from increased effects of landscape and climatic changes (Navarro and Pereira 2012). For instance, the Transboundary Biosphere Reserve of Meseta Ibérica (BRMI), one of the largest reserves and important areas for wildlife in Europe, with around 1,132,000 hectares (www.unesco.org), is currently subjected to processes of rural land abandonment and climatic instabilities that have contributed to the disruption of ecosystem processes (e.g. escalation of extreme wildfires; Sil et al. 2019). The Reserve encompasses five natural parks and several Natura 2000 sites, comprising high landscape heterogeneity and biodiversity. As an example, the Reserve supports a large number of vertebrate species (around 250 species; www.unesco.org), including several emblematic taxa of conservation concern, such as the black stork [*Ciconia nigra* (Linnaeus, 1758)], the Egyptian vulture [*Neophron pernocterus* (Linnaeus, 1766)], the Iberian frog [*Rana iberica* (Boulenger, 1879)] and the Seoane's viper [*Viper seoanei* (Lataste, 1879)]. However, the current climatic and landscapes changes constitute major threats for the local biodiversity and compiling framework data about how these impacts might influence species distribution patterns in the future could contribute to regional and local conservation efforts.

Here, we present a complete dataset of historical (serving as temporal baseline data) and future climate models with a high spatial resolution (1 × 1 km) for the Transboundary Biosphere Reserve of Meseta Ibérica (Portugal-Spain), as well as a complete series of distribution models for 207 vertebrate species (168 birds, 24 reptiles and 15 amphibians), projected for a historical period (1989-2005) and for future climate change scenarios (2021-2050) in the Reserve.

General description

Purpose: These datasets were developed to provide framework data for biodiversity conservation in one of the most diverse Biosphere Reserves in Europe.

Additional information: The climate model datasets (comprising three main variables – daily total precipitation, maximum and minimum temperatures) are provided for two main areas: the Iberian Peninsula and the Transboundary Biosphere Reserve of Meseta Ibérica (Fig. 1). The climate model simulations are provided for one historical period (daily data from 1989 to 2005) in the Iberian Peninsula (at 9×9 km) and two periods (daily data from 1989 to 2005 and from 2021 to 2050) in the Meseta Ibérica (at 1×1 km). Future climate data are available from four Global-Regional Climate Model chains and two Representative Concentration Pathways (RCP 4.5 and 8.5). The SDMs are provided for both areas (10×10 km in the Iberian Peninsula and 1×1 km in the Meseta Ibérica) and for one historical period in the Iberian Peninsula (mean between 1989-2005) and two periods in the Meseta Ibérica (mean between 1989-2005 and mean between 2021 and 2050).

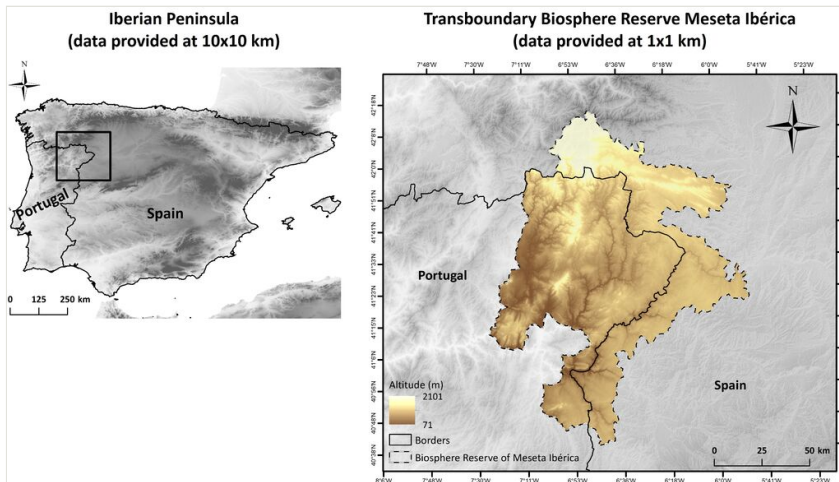


Figure 1. [doi](#)

Geographic location of the study areas: the Iberian Peninsula (climate variables and biodiversity data provided at 10×10 km resolution) and the Transboundary Biosphere Reserve of Meseta Ibérica (data provided at 1×1 km resolution).

The data are provided in compressed folders, containing the following information:

1. Climate model files encompassing three climatic variables in netCDF format (files organised according to each area and temporal period) and the corresponding bioclimatic variables available in .tiff format;
2. Species models for 207 vertebrate species, including the corresponding spatial projections for the historic and future scenarios (files organised according to each species, area and temporal period).

Sampling methods

Step description: Presence/absence data for bird species present in the Iberian Peninsula were obtained from the Spanish and Portuguese Atlas of Breeding Birds, at 10 km resolution (Martí and Del Moral 2003, Equipa Atlas 2008). Presence/absence data for reptile and amphibian species were extracted from the Atlas of Amphibians and Reptiles of Portugal and Spain, at 10 km resolution (Pleguezuelos et al. 2002, Loureiro et al. 2008). Only native species with at least one presence in the BRMI were selected. In addition, species with less than 30 presences in the Iberian Peninsula were excluded to avoid model overfitting (see Araújo et al. 2019). In the end, data were obtained for 207 species: 168 birds, 24 reptiles and 15 amphibians (see Table 1). Taking into account the taxonomic uncertainties of some species (see Table 1), the species list was determined according to the most recently updated versions of the Altases to avoid any taxonomic conflicts (Sillero et al. 2014).

Table 1.

Species information: taxonomic group, scientific name, species code and number of presences used for modelling (N). The quality threshold (area under the curve - AUC) used for model selection (to be included on ensemble modelling) are indicated. The accuracy metrics of ensemble species distribution models (SDMs), measured by the AUC and True Skill Statistics (TSS), are also mentioned. Ten model replicates were conducted for each species.

Group	Scientific name	Code	N	AUC threshold	Climate models	
					AUC	TSS
Amphibia	<i>Alytes cisternasii</i>	ACI	1253	0.8	0.96	0.795
Amphibia	<i>Alytes obstetricans</i>	AOB	2336	0.8	0.927	0.681
Amphibia	<i>Bufo spinosus</i>	BSP	4471	0.7	0.915	0.654
Amphibia	<i>Discoglossus galganoi</i>	DGA	1930	0.7	0.993	0.924
Amphibia	<i>Epidalea calamita</i>	ECA	3973	0.7	0.949	0.757
Amphibia	<i>Hyla molleri</i>	HMO	1502	0.8	0.957	0.759
Amphibia	<i>Lissotriton boscai</i>	LBO	1695	0.8	0.948	0.76
Amphibia	<i>Lissotriton helveticus</i>	LHE	701	0.8	0.971	0.833
Amphibia	<i>Pelobates cultripes</i>	PCU	2221	0.8	0.968	0.786
Amphibia	<i>Pelophylax perezi</i>	PPE	5587	0.8	0.989	0.932
Amphibia	<i>Pelodytes punctatus</i>	PPU	1765	0.7	0.95	0.776
Amphibia	<i>Pleurodeles waltl</i>	PWA	1897	0.8	0.918	0.659
Amphibia	<i>Rana iberica</i>	RIB	953	0.8	0.984	0.871
Amphibia	<i>Salamandra salamandra</i> spp.	SSA	2422	0.8	0.928	0.706
Amphibia	<i>Triturus marmoratus</i> spp.	TMA	2485	0.7	0.924	0.673

Group	Scientific name	Code	N	AUC threshold	Climate models	
					AUC	TSS
Birds	<i>Accipiter gentilis</i>	ACCGENT	2266	0.7	0.991	0.895
Birds	<i>Accipiter nisus</i>	ACCNISU	2565	0.7	0.984	0.88
Birds	<i>Acrocephalus arundinaceus</i>	ACRARUN	1348	0.8	0.99	0.908
Birds	<i>Acrocephalus scirpaceus</i>	ACRSCIR	1581	0.7	0.991	0.912
Birds	<i>Aegithalos caudatus</i>	AEGCAUD	4157	0.7	0.888	0.599
Birds	<i>Alauda arvensis</i>	ALAARVE	2999	0.8	0.896	0.62
Birds	<i>Alcedo atthis</i>	ALCATTH	2285	0.7	0.861	0.542
Birds	<i>Alectoris rufa</i>	ALERUFA	5050	0.7	0.946	0.803
Birds	<i>Anas clypeata</i>	ANACLYP	141	0.8	0.987	0.945
Birds	<i>Anas platyrhynchos</i>	ANAPLAT	3354	0.7	0.871	0.56
Birds	<i>Anas strepera</i>	ANASTRE	305	0.8	0.981	0.913
Birds	<i>Anthus campestris</i>	ANTCAMP	2248	0.8	0.896	0.614
Birds	<i>Anthus spinoletta</i>	ANTSPIN	439	0.8	0.987	0.908
Birds	<i>Anthus trivialis</i>	ANTTRIV	1163	0.8	0.97	0.846
Birds	<i>Apus melba</i>	APUMELB	1047	0.7	0.975	0.849
Birds	<i>Apus pallidus</i>	APUPALL	847	0.8	0.945	0.75
Birds	<i>Aquila chrysaetos</i>	AQUCHRY	700	0.7	0.968	0.835
Birds	<i>Ardea cinerea</i>	ARDCINE	543	0.7	0.994	0.944
Birds	<i>Ardea purpurea</i>	ARDPURP	259	0.8	0.977	0.872
Birds	<i>Asio flammeus</i>	ASIFLAM	77	0.8	0.991	0.973
Birds	<i>Asio otus</i>	ASIoTUS	1362	0.7	0.893	0.597
Birds	<i>Athene noctua</i>	ATHNOCT	4424	0.7	0.962	0.793
Birds	<i>Aythya ferina</i>	AYTFERI	195	0.8	0.987	0.94
Birds	<i>Bubo bubo</i>	BUBBUBO	2141	0.7	0.88	0.601
Birds	<i>Bubulcus ibis</i>	BUBIBIS	287	0.8	0.964	0.827
Birds	<i>Burhinus oediconemus</i>	BUROEDI	2264	0.8	0.975	0.836
Birds	<i>Buteo buteo</i>	BUTBUTE	4504	0.7	0.867	0.546
Birds	<i>Calandrella brachydactyla</i>	CALBRAC	2245	0.8	0.992	0.909
Birds	<i>Alauda rufescens</i>	CALRUF	246	0.8	0.985	0.903
Birds	<i>Caprimulgus europaeus</i>	CAPEURO	1979	0.8	0.899	0.618
Birds	<i>Caprimulgus ruficollis</i>	CAPRUF	1781	0.8	0.916	0.656
Birds	<i>Carduelis spinus</i>	CARSPIN	84	0.8	0.99	0.963

Group	Scientific name	Code	N	AUC threshold	Climate models	
					AUC	TSS
Birds	<i>Hirundo daurica</i>	CECDAUR	1253	0.8	0.992	0.952
Birds	<i>Certhia brachydactyla</i>	CERBRAC	2336	0.7	0.868	0.56
Birds	<i>Cettia cetti</i>	CETCETT	4471	0.7	0.927	0.674
Birds	<i>Charadrius dubius</i>	CHADUBI	1930	0.7	0.989	0.896
Birds	<i>Chersophilus duponti</i>	CHEDUPO	3973	0.8	0.98	0.907
Birds	<i>Chlidonias hybrida</i>	CHLHYBR	1502	0.8	0.991	0.959
Birds	<i>Ciconia ciconia</i>	CICCICO	1695	0.8	0.927	0.705
Birds	<i>Ciconia nigra</i>	CICNIGR	701	0.8	0.964	0.838
Birds	<i>Cinclus cinclus</i>	CINCINC	2221	0.8	0.937	0.728
Birds	<i>Circus aeruginosus</i>	CIRAERU	5587	0.8	0.979	0.891
Birds	<i>Circus cyaneus</i>	CIRCYAN	1765	0.8	0.963	0.832
Birds	<i>Circaetus gallicus</i>	CIRGALL	1897	0.7	0.944	0.728
Birds	<i>Circus pygargus</i>	CIRPYGA	953	0.7	0.992	0.913
Birds	<i>Cisticola juncidis</i>	CISJUNC	2422	0.8	0.97	0.814
Birds	<i>Clamator glandarius</i>	CLAGLAN	2485	0.7	0.994	0.925
Birds	<i>Coccothraustes coccothraustes</i>	COCCOCC	2266	0.8	0.965	0.818
Birds	<i>Columba livia</i>	COLLIVI	2565	0.7	0.945	0.787
Birds	<i>Columba oenas</i>	COLOENA	1348	0.8	0.917	0.68
Birds	<i>Columba palumbus</i>	COLPALU	1581	0.7	0.947	0.793
Birds	<i>Corvus corone</i>	CORCORO	4157	0.8	0.936	0.701
Birds	<i>Coracias garrulus</i>	CORGARR	2999	0.8	0.927	0.705
Birds	<i>Corvus monedula</i>	CORMONE	2285	0.7	0.992	0.902
Birds	<i>Coturnix coturnix</i>	COTCOTU	5050	0.7	0.934	0.717
Birds	<i>Cuculus canorus</i>	CUCCANO	141	0.7	0.98	0.856
Birds	<i>Cyanopica cyana</i>	CYACYAN	3354	0.8	0.954	0.765
Birds	<i>Dendrocopos major</i>	DENMAJO	305	0.8	0.974	0.814
Birds	<i>Dendrocopos minor</i>	DENMINO	2248	0.8	0.95	0.751
Birds	<i>Egretta garzetta</i>	EGRGARZ	439	0.8	0.976	0.878
Birds	<i>Elanus caeruleus</i>	ELACAER	1163	0.8	0.943	0.734
Birds	<i>Emberiza calandra</i>	EMBICALA	1047	0.7	0.908	0.695
Birds	<i>Emberiza cia</i>	EMBCIA	847	0.8	0.94	0.681
Birds	<i>Emberiza cirius</i>	EMBCIRL	700	0.7	0.991	0.901

Group	Scientific name	Code	N	AUC threshold	Climate models	
					AUC	TSS
Birds	<i>Emberiza citrinella</i>	EMBCITR	543	0.8	0.983	0.898
Birds	<i>Emberiza hortulana</i>	EMBHORT	259	0.8	0.947	0.755
Birds	<i>Erithacus rubecula</i>	ERIRUBE	77	0.8	0.905	0.619
Birds	<i>Falco naumanni</i>	FALNAUM	1362	0.8	0.93	0.723
Birds	<i>Falco peregrinus</i>	FALPERE	4424	0.8	0.99	0.892
Birds	<i>Falco subbuteo</i>	FALSUBB	195	0.7	0.975	0.819
Birds	<i>Ficedula hypoleuca</i>	FICHYPO	2141	0.8	0.975	0.899
Birds	<i>Fringilla coelebs</i>	FRICOEL	287	0.7	0.901	0.644
Birds	<i>Fulica atra</i>	FULATRA	2264	0.8	0.927	0.688
Birds	<i>Gallinula chloropus</i>	GALCHLO	4504	0.7	0.874	0.593
Birds	<i>Galerida cristata</i>	GALCRIS	2245	0.8	0.934	0.701
Birds	<i>Galerida theklae</i>	GALTHEK	246	0.8	0.943	0.710
Birds	<i>Garrulus glandarius</i>	GARGLAN	1979	0.8	0.945	0.717
Birds	<i>Gyps fulvus</i>	GYPFULV	1781	0.7	0.999	0.98
Birds	<i>Hieraaetus fasciatus</i>	HIEFASC	84	0.8	0.997	0.956
Birds	<i>Hieraaetus pennatus</i>	HIEPENN	1253	0.7	0.99	0.889
Birds	<i>Himantopus himantopus</i>	HIMHIMA	2336	0.8	0.921	0.668
Birds	<i>Ixobrychus minutus</i>	IXOMINU	4471	0.8	0.991	0.944
Birds	<i>Jynx torquilla</i>	JYNTORQ	1930	0.7	0.989	0.891
Birds	<i>Lanius collurio</i>	LANCOLL	3973	0.8	0.971	0.855
Birds	<i>Lanius excubitor</i>	LANEXCU	1502	0.7	0.885	0.611
Birds	<i>Lanius senator</i>	LANSENA	1695	0.8	0.947	0.761
Birds	<i>Larus ridibundus</i>	LARRIDI	701	0.8	0.994	0.968
Birds	<i>Loxia curvirostra</i>	LOXCURV	2221	0.8	0.931	0.733
Birds	<i>Lullula arborea</i>	LULARBO	5587	0.7	0.99	0.897
Birds	<i>Luscinia megarhynchos</i>	LUSMEGA	1765	0.7	0.992	0.923
Birds	<i>Cyanecula svecica</i>	LUSSVEC	1897	0.8	0.995	0.969
Birds	<i>Melanocorypha calandra</i>	MELCALA	953	0.8	0.918	0.681
Birds	<i>Merops apiaster</i>	MERAPIA	2422	0.8	0.938	0.717
Birds	<i>Milvus migrans</i>	MILMIGR	2485	0.7	0.976	0.835
Birds	<i>Milvus milvus</i>	MILMILV	2266	0.8	0.938	0.727
Birds	<i>Monticola saxatilis</i>	MONSAXA	2565	0.8	0.941	0.751

Group	Scientific name	Code	N	AUC threshold	Climate models	
					AUC	TSS
Birds	<i>Monticola solitarius</i>	MONSOLI	1348	0.8	0.992	0.908
Birds	<i>Motacilla alba</i>	MOTALBA	1581	0.7	0.971	0.864
Birds	<i>Motacilla cinerea</i>	MOTCINE	4157	0.8	0.94	0.7
Birds	<i>Motacilla flava</i>	MOTFLAV	2999	0.8	0.97	0.836
Birds	<i>Muscicapa striata</i>	MUSSTRI	2285	0.7	0.977	0.835
Birds	<i>Neophron percnopterus</i>	NEOPERC	5050	0.7	0.97	0.876
Birds	<i>Nycticorax nycticorax</i>	NYCNYCT	141	0.8	0.995	0.974
Birds	<i>Oenanthe hispanica</i>	OENHISP	3354	0.8	0.909	0.686
Birds	<i>Oenanthe leucura</i>	OENLEUC	305	0.8	0.945	0.754
Birds	<i>Oenanthe oenanthe</i>	OENOENA	2248	0.8	0.923	0.674
Birds	<i>Oriolus oriolus</i>	ORIORIO	439	0.7	0.91	0.666
Birds	<i>Otis tarda</i>	OTITARD	1163	0.8	0.961	0.797
Birds	<i>Otus scops</i>	OTUSCOP	1047	0.7	0.925	0.695
Birds	<i>Periparus ater</i>	PARATER	847	0.8	0.92	0.669
Birds	<i>Parus caeruleus</i>	PARCAER	700	0.7	0.884	0.599
Birds	<i>Parus cristatus</i>	PARCRIS	543	0.8	0.985	0.863
Birds	<i>Parus major</i>	PARMAJO	259	0.7	0.935	0.745
Birds	<i>Passer hispaniolensis</i>	PASHISP	77	0.8	0.942	0.736
Birds	<i>Passer montanus</i>	PASMONT	1362	0.7	0.869	0.541
Birds	<i>Pernis apivorus</i>	PERAPIV	4424	0.8	0.937	0.736
Birds	<i>Perdix perdix</i>	PERPERD	195	0.8	0.993	0.954
Birds	<i>Petronia petronia</i>	PETPETR	2141	0.8	0.905	0.63
Birds	<i>Phasianus colchicus</i>	PHACOLC	287	0.8	0.997	0.985
Birds	<i>Phoenicurus ochrurus</i>	PHOOCHR	2264	0.8	0.91	0.632
Birds	<i>Phoenicurus phoenicurus</i>	PHOPHOE	4504	0.8	0.949	0.77
Birds	<i>Phylloscopus bonelli</i>	PHYBONE	2245	0.8	0.906	0.626
Birds	<i>Phylloscopus collybita</i>	PHYCOLL	246	0.8	0.922	0.678
Birds	<i>Phylloscopus ibericus</i>	PHYIBER	1979	0.8	0.935	0.729
Birds	<i>Pica pica</i>	PICPICA	1781	0.7	0.86	0.536
Birds	<i>Picus viridis</i>	PICVIRI	84	0.7	0.868	0.551
Birds	<i>Podiceps cristatus</i>	PODCRIS	1253	0.8	0.978	0.889
Birds	<i>Podiceps nigricollis</i>	PODNIGR	2336	0.8	0.993	0.962

Group	Scientific name	Code	N	AUC threshold	Climate models	
					AUC	TSS
Birds	<i>Prunella collaris</i>	PRUCOLL	4471	0.8	0.994	0.957
Birds	<i>Prunella modularis</i>	PRUMODU	1930	0.8	0.976	0.844
Birds	<i>Pterocles alchata</i>	PTEALCH	3973	0.8	0.974	0.877
Birds	<i>Pterocles orientalis</i>	PTEORIE	1502	0.8	0.968	0.84
Birds	<i>Ptyonoprogne rupestris</i>	PTYRUPE	1695	0.8	0.992	0.902
Birds	<i>Pyrrhocorax graculus</i>	PYRGRAC	701	0.8	0.992	0.947
Birds	<i>Pyrrhula pyrrhula</i>	PYRPYRR	2221	0.8	0.917	0.681
Birds	<i>Rallus aquaticus</i>	RALAQUA	5587	0.7	0.995	0.948
Birds	<i>Recurvirostra avosetta</i>	RECAVOS	1765	0.8	0.99	0.945
Birds	<i>Regulus ignicapillus</i>	REGIGNI	1897	0.8	0.928	0.693
Birds	<i>Regulus regulus</i>	REGREGU	953	0.8	0.928	0.899
Birds	<i>Remiz pendulinus</i>	REMPEND	2422	0.8	0.966	0.824
Birds	<i>Riparia riparia</i>	RIPRIPA	2485	0.7	0.993	0.932
Birds	<i>Saxicola rubetra</i>	SAXRUBE	2266	0.8	0.978	0.888
Birds	<i>Saxicola torquatus</i>	SAXTORQ	2565	0.7	0.898	0.622
Birds	<i>Serinus citrinella</i>	SERCITR	1348	0.8	0.984	0.904
Birds	<i>Sitta europaea</i>	SITEURO	1581	0.8	0.949	0.736
Birds	<i>Sterna nilotica</i>	STENILO	4157	0.8	0.996	0.981
Birds	<i>Strix aluco</i>	STRALUC	2999	0.7	0.991	0.896
Birds	<i>Streptopelia decaocto</i>	STRDECA	2285	0.7	0.898	0.651
Birds	<i>Streptopelia turtur</i>	STRTURT	5050	0.7	0.927	0.697
Birds	<i>Sturnus unicolor</i>	STUUNIC	141	0.7	0.923	0.71
Birds	<i>Sylvia atricapilla</i>	SYLATRI	3354	0.7	0.991	0.902
Birds	<i>Sylvia borin</i>	SYLBORI	305	0.8	0.931	0.712
Birds	<i>Sylvia cantillans</i>	SYLCANT	2248	0.8	0.896	0.602
Birds	<i>Sylvia communis</i>	SYLCOMM	439	0.7	0.899	0.606
Birds	<i>Sylvia conspicillata</i>	SYLCONS	1163	0.8	0.947	0.747
Birds	<i>Sylvia hortensis</i>	SYLHORT	1047	0.7	0.983	0.881
Birds	<i>Sylvia melanocephala</i>	SYLMELA	847	0.8	0.926	0.663
Birds	<i>Sylvia undata</i>	SYLUNDA	700	0.7	0.906	0.643
Birds	<i>Tachybaptus ruficollis</i>	TACRUFU	543	0.7	0.967	0.817
Birds	<i>Tetrax tetrax</i>	TETTETR	259	0.8	0.988	0.913

Group	Scientific name	Code	N	AUC threshold	Climate models	
					AUC	TSS
Birds	<i>Tichodroma muraria</i>	TICMURA	77	0.8	0.997	0.975
Birds	<i>Tringa totanus</i>	TRITOTA	1362	0.8	0.994	0.98
Birds	<i>Troglodytes troglodytes</i>	TROTROG	4424	0.8	0.931	0.667
Birds	<i>Turdus philomelos</i>	TURPHIL	195	0.8	0.936	0.704
Birds	<i>Turdus viscivorus</i>	TURVISC	2141	0.7	0.896	0.637
Birds	<i>Tyto alba</i>	TYTALBA	287	0.7	0.947	0.749
Birds	<i>Upupa epops</i>	UPUEPOP	2264	0.7	0.904	0.66
Birds	<i>Vanellus vanellus</i>	VANVANE	4504	0.8	0.979	0.927
Reptilia	<i>Acanthodactylus erythrurus</i>	AER	2245	0.7	0.932	0.73
Reptilia	<i>Anguis fragilis</i>	AFR	246	0.8	0.957	0.781
Reptilia	<i>Blanus cinereus</i>	BCI	1979	0.8	0.914	0.655
Reptilia	<i>Coronella austriaca</i>	CAU	1781	0.8	0.954	0.787
Reptilia	<i>Chalcides bedriagai</i>	CBE	84	0.7	0.993	0.943
Reptilia	<i>Coronella girondica</i>	CGI	1253	0.7	0.932	0.715
Reptilia	<i>Chalcides striatus</i>	CST	2336	0.7	0.993	0.924
Reptilia	<i>Emys orbicularis</i> spp.	EOR	4471	0.8	0.996	0.954
Reptilia	<i>Hemorrhois hippocrepis</i>	HHI	1930	0.8	0.918	0.692
Reptilia	<i>Iberolacerta monticola</i> spp.	IMO	3973	0.8	0.995	0.965
Reptilia	<i>Lacerta schreiberi</i>	LSC	1502	0.8	0.971	0.831
Reptilia	<i>Macroprotodon brevis</i> spp.	MBR	1695	0.8	0.943	0.732
Reptilia	<i>Mauremys leprosa</i>	MLE	701	0.8	0.918	0.661
Reptilia	<i>Malpolon monspessulanus</i>	MMO	2221	0.7	0.973	0.868
Reptilia	<i>Natrix astreptophora</i>	NAS	5587	0.7	0.866	0.543
Reptilia	<i>Natrix maura</i>	NMA	1765	0.7	0.966	0.809
Reptilia	<i>Psammmodromus algirus</i>	PAL	1897	0.8	0.916	0.677
Reptilia	<i>Podarcis bocagei</i>	PBO	953	0.8	0.994	0.95
Reptilia	<i>Podarcis guadarramae</i>	PGU	2422	0.7	0.984	0.885
Reptilia	<i>Timon lepidus</i> spp.	TLE	2485	0.7	0.944	0.746
Reptilia	<i>Tarentola mauritanica</i>	TMR	2266	0.8	0.914	0.674
Reptilia	<i>Vipera latastei</i>	VLA	2565	0.7	0.994	0.931
Reptilia	<i>Vipera seoanei</i>	VSE	1348	0.8	0.986	0.93
Reptilia	<i>Zamenis scalaris</i>	ZSC	1581	0.7	0.866	0.574

The daily climatic data of temperature and precipitation were retrieved from the E-OBS database v.20.0e (Cornes et al. 2018), from 1989 to 2005. Future climatic data were developed from the following model chains in order to account for potential stochasticity of climate model projections: CNRM-CERFACS-CNRM-CM5 (CNRM), ICHEC-EC-EARTH (ICHEC), IPSL-IPSL-CM5A-MR (IPSL) and MPI-M-MPI-ESM-LR (MPI) models, generated within the EURO-CORDEX project (Jacob et al. 2020) and is available for two Representative Concentration Pathways, one intermediate scenario where emissions start to decline after 2040 (RCP 4.5) and one extreme scenario where emissions experience a continuous increase (RCP 8.5). Climate model data were bias-corrected using quantile mapping and E-OBS as a baseline for the overlapping period between EURO-CORDEX and E-OBS (1989-2005). Both historical and future climate datasets contain three variables: daily total precipitation, maximum and minimum temperatures. For the data collected, temporal and spatial (Biosphere Reserve of Meseta Ibérica and the Iberian Peninsula) domains were extracted and data were bilinearly interpolated to common 9 km grids. Subsequently, a spatial downscaling of temperatures was performed, using the digital elevation model from the Shuttle Radar Topography Mission (SRTM) databases, at 1 km grid resolution and the vertical temperature gradient (altitudinal correction). Precipitation totals were bilinearly interpolated to the same 1 km grid.

The main climate variables (i.e. daily precipitation, maximum temperature and minimum temperature) were used to calculate 19 bioclimatic variables through the “dismo” package from the R software v.4.0.5 (<https://www.r-project.org>). A Variance Inflation Factor (VIF) analysis between the bioclimatic variables and Spearman correlation tests were conducted using the “usdm” package of R software v.4.0.5 (Suppl. material 1). Highly correlated variables (VIF > 3 and Spearman correlation > 0.7 or < -0.7) were excluded to avoid multicollinearity issues (Guisan et al. 2017). Eight bioclimatic predictors were ultimately selected and implemented in the species distribution models (SDMs; Table 2).

Table 2.

Description of the bioclimatic variables used in species distribution models. The code, name, units and the regional (Iberian Peninsula) and local (Biosphere Reserve of Meseta Ibérica) ranges are indicated for each variable.

Code	Variable name	Units	Iberian Peninsula	Meseta Ibérica
BIO3	Isothermality	Coefficient	25 – 43	33 - 40
BIO4	Temperature Seasonality	Coefficient	387 - 870	666 - 813
BIO10	Mean Temperature of Warmest Quarter	°C	11.2 – 28.4	15.2 – 26.8
BIO11	Mean Temperature of Coldest Quarter	°C	-7.8 – 12.9	-3.1 – 6.7
BIO15	Precipitation Seasonality	Coefficient	23 – 94	47 - 76
BIO16	Precipitation of Wettest Quarter	mm	200 - 2200	510 - 1110
BIO17	Precipitation of Driest Quarter	mm	0 - 470	0 - 130
BIO19	Precipitation of Coldest Quarter	mm	30 - 1130	120 - 470

Single-species ensemble models were built for each species at the Iberian Peninsula scale using the “biomod2” R package (Thuiller et al. 2009; http://r-forge.r-project.org/R/?group_id=302) at 10 km resolution. Although the original climate data were obtained at 9 x 9 km, the SDMs were performed at 10 x 10 km to match the spatial resolution of the Atlases' data. Then, the modelling of the climate suitability (hereafter “climate species models”) for each species using the aforementioned bioclimatic variables for 2005 (derived from the mean between 1989 and 2005) was conducted. The ensemble models were built using six modelling techniques (specifically, Generalised Linear Models, Generalised Addictive Models, Random Forests, Artificial Neural Networks, Gradient Boosting Models and Multiple Adaptive Regression Splines), in order to deal with inter-model variabilities (Thuiller et al. 2009). A repeated (10 times) split-sample approach was used to allow independency between model calibration and model evaluation. Each model was trained using 80% of the data, while the remaining 20% were used for model validation using the area under the curve (AUC) of a Receiver-Operating Characteristic (ROC) curve and the True Skill Statistics (TSS). An ensemble-forecasting framework was then applied by stacking the single-species models using a weighted average approach available in “biomod2”, using AUC values as model weights.

The ensemble models were then projected to the Meseta Ibérica at 1 km resolution for the historical (1989-2005; Fig. 2) and future (2021-2050) periods for the four climate models and two RCP scenarios (Fig. 3). Finally, ensemble model predictions were reclassified into binary presence/absence maps through ROC optimised thresholds available in the “biomod2” package (see Thuiller et al. 2009).

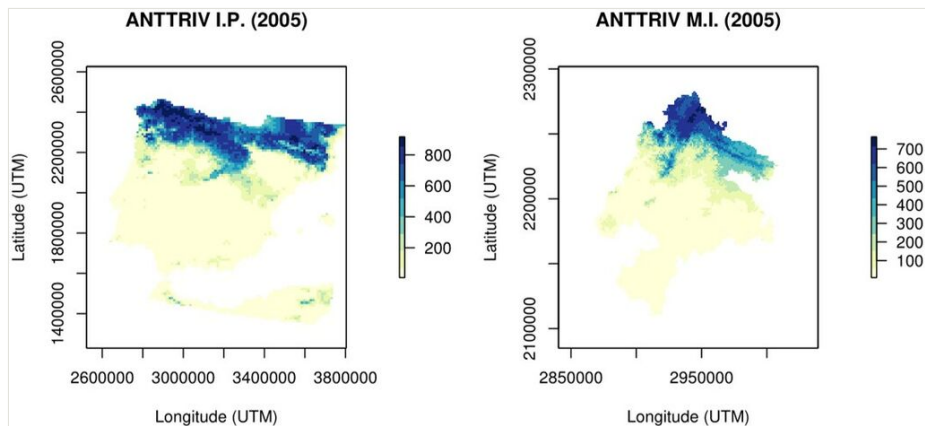


Figure 2. [doi](#)

Example of the historical climate (1989-2005) model projections obtained for the Iberian Peninsula (I.P.; 10 × 10 km) and the Transboundary Biosphere Reserve of Meseta Ibérica (M.I.; 1 × 1 km). The models present the ensemble suitability values for the Tree pipit (*Anthus trivialis*; code: ANTRIV).

This dataset contributes towards updating the current knowledge on the potential effects of climate change on the distribution of three main taxonomic groups in one of the largest

Biosphere Reserves in Europe. In general, a wide range of species responses to climate change were observed, which might be explained by species-specific ecological preferences. The extent of species responses varied according to the four climate models due to the potential stochasticity of climate projections, but the predicted positive or negative climatic effects were congruent amongst all models for each species (see Fig. 3). According to the SDMs, the majority of species are expected to be negatively affected by climate change scenarios (see Fig. 3). In fact, climatic suitable areas for 52% and 57% of the species are predicted to decrease under the intermediate (RCP 4.5) and extreme (RCP 8.5) climate change scenarios, respectively (see example in Fig. 3). Future climatic instabilities might contribute to distribution contractions and shifts, which might increase species vulnerability to extinction due to stochastic effects. Nonetheless, future studies should focus on combining the effects of land-use change and climate factors, in order to improve model predictive accuracy of future impacts on species distributions and, thus, to better support conservation planning and actions in the study area.

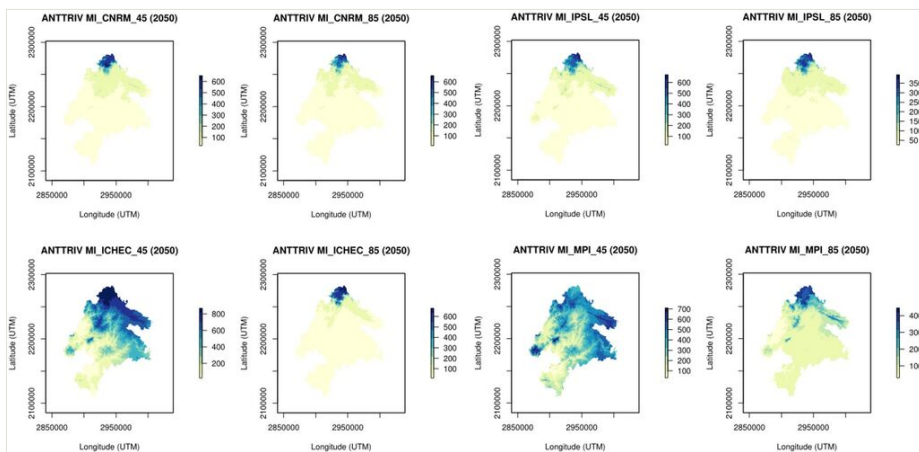


Figure 3. [doi](#)

Example of future climate model projections for 2050 obtained for the Transboundary Biosphere Reserve of Meseta Ibérica (M.I.; 1×1 km). The models present the ensemble suitability values for the Tree pipit (*Anthus trivialis*; code: ANTRIV), according to each climate model (CNRM, IPSL, ICHEC and MPI; Jacob et al. 2020) and each Representative Concentration Pathways scenarios (RCP 4.5; RCP 8.5).

Geographic coverage

Description: The geographic range of the data covers the entire continental area of the Iberian Peninsula at 10 km of spatial resolution (45.158°N and 35.347°N Latitude; 9.560°W and 3.889°E Longitude) and the Transboundary Biosphere Reserve of Meseta Ibérica at 1 km of spatial resolution (42.384°N and 40.588°N Latitude; 7.692°W and 5.613°W Longitude).

Coordinates: 40.588 and 42.384 Latitude; -7.692 and -5.613 Longitude.

Temporal coverage

Notes: Climate data cover the historical period between 1989 and 2005 (daily data) and a future period between 2020 and 2050 (daily data of four climate models under the RCP 4.5 and RCP 8.5 scenarios).

Species distribution models (climate species models) for the 207 vertebrate species cover the historical period of 2005 (average of the bioclimatic variables between 1989 and 2005) and a future period of 2050 (average between 2020 and 2050, for each of the four climate models and RCP scenarios).

Usage licence

Usage licence: Creative Commons Public Domain Waiver (CC-Zero)

Data resources

Data package title: Climate models and species distribution models of amphibians, birds and reptiles of the Iberian peninsula and the Biosphere Reserve of Meseta Ibérica)

Number of data sets: 2

Data set name: Climate models

Download URL: Part1: <https://zenodo.org/record/4589376#.YFTI3dxUnIU>

Part 2: <https://zenodo.org/record/4590027#.YFTmBdxUnIU>

Data format: netCDF (.nc)

Description: Daily climate variables (daily precipitation, maximum temperature and minimum temperature) for a historical (1989-2005) and future period (2021-2050), for four climate models (CNRM, ICHEC, IPSL and MPI) and two Representative Concentration Pathways (RCP 4.5 and 8.5). Climatic variables are provided at 9 × 9 km resolution for the Iberian Peninsula (only for the historical period) and at 1 × 1 km and for the Transboundary Biosphere Reserve of Meseta Ibérica (both periods). Data divided into two parts.

Column label	Column description
Files of the historic period - AREA_EOBS_H_ALT_VAR_1	Code description - AREA refers to the Iberian Peninsula (PI) or Meseta Ibérica (MI), EOBS to the historic climatic dataset of reference (E-OBS), H to the historical period (H), ALT to the altitudinal-based correction of climate variables, VAR to the three provided variables (RR - daily precipitation; TMAX - Maximum temperature; TMIN - Minimum temperature) and 1 to the spatial resolution (1 km).

Files of the future period - MI_MODEL_RCP_MR_ALT_VAR_1	Code description - MI refers to the Meseta Ibérica, MODEL to the climate model used (CNRM-CERFACS-CNRM-CM5 - CNRM; ICHEC-EC-EARTH - ICHEC; IPSL-IPSL-CM5A-MR - IPSL; MPI-M-MPI-ESM-LR - MPI), RCP to the Representative Concentration Pathway (RCP 4.5 - 45; RCP 8.5 - 85), MR to the future period, ALT to the altitudinal-based correction of climate variables, VAR to the three provided variables (RR - daily precipitation; TMAX - Maximum temperature; TMIN - Minimum temperature) and 1 to the spatial resolution (1 km).
-----------------------------------------------------------	-----------------------------------------------------------------------------------------------------------------------------------------------------------------------------------------------------------------------------------------------------------------------------------------------------------------------------------------------------------------------------------------------------------------------------------------------------------------------------------------------------------------------------------

Data set name: Species distribution models

Download URL: Part 1: <https://zenodo.org/record/4598254#.YFTkjdXUnIU>

Part 2: <https://zenodo.org/record/4599822#.YFTlv9xUnIU>

Description: Species distribution models of 207 vertebrates distributed in the Iberian Peninsula and the Transboundary Biosphere Reserve of Meseta Ibérica. The models are available at 10 × 10 km resolution for the Iberian Peninsula (climate models for 2005). Model projections are available for 2005 and 2050 (for the CNRM, ICHEC, IPSL and MPI climate models and the RCP 4.5 and RCP 8.5 scenarios) for the Biosphere Reserve at 1 × 1 km resolution. Data divided into two parts.

Column label	Column description
Climate models	Species distribution models of 207 vertebrates for 2005 and 2050

Acknowledgements

This research was supported by Portuguese national funds through FCT - Foundation for Science and Technology, I.P., under the FirESmart project (PCIF/MOG/0083/2017) and by project INMODES (CGL2017-89999-C2-2-R), funded by the Spanish Ministry of Science and Innovation. AR was supported by the Xunta de Galicia (ED481B2016/084-0) and the IACOBUS programme (INTERREG V-A España–Portugal, POCTEP 2014-2020). This work was also supported by National Funds by FCT - Portuguese Foundation for Science and Technology, under the project UIDB/04033/2020.

Author contributions

Draft preparation: JCC. Analyses and preparation of climate data: TF, JAS, JCC. Species distribution modelling and data preparation: SR, JCC. Visualisation: JCC. Review and editing: all authors.

References

- Araújo MB, Anderson RP, Márcia Barbosa A, Beale CM, Dormann CF, Early R, Garcia RA, Guisan A, Maiorano L, Naimi B, O'Hara R, Zimmermann NE, Rahbek C (2019) Standards for distribution models in biodiversity assessments. *Science Advances* 5 (1): eaat4858. <https://doi.org/10.1126/sciadv.aat4858>
- Cornes R, van der Schrier G, van den Besselaar EM, Jones P (2018) An ensemble version of the E-OBS temperature and precipitation data sets. *Journal of Geophysical Research: Atmospheres* 123 (17): 9391-9409. <https://doi.org/10.1029/2017jd028200>
- Equipa Atlas (2008) Atlas das Aves Nidificantes em Portugal (1999-2005). Instituto da Conservação da Natureza e da Biodiversidade, Sociedade Portuguesa para o Estudo das Aves, Parque Natural da Madeira e Secretaria Regional do Ambiente e do Mar. Assrio & Alvim, Lisboa.
- Guisan A, Thuiller W, Zimmermann NE (2017) Habitat suitability and distribution models: with applications in R. Cambridge University Press, Cambridge. <https://doi.org/10.1017/9781139028271>
- Jacob D, Teichmann C, Sobolowski S, Katragkou E, Anders I, Belda M, Benestad R, Boberg F, Buonomo E, Cardoso RM, Casanueva A, Christensen O, Christensen JH, Coppola E, De Cruz L, Davin EL, Dobler A, Domínguez M, Fealy R, Fernandez J, Gaertner MA, García-Díez M, Giorgi F, Gobiet A, Goergen K, Gómez-Navarro JJ, Alemán JGG, Gutiérrez C, Gutiérrez J, Güttler I, Haensler A, Halenka T, Jerez S, Jiménez-Guerrero P, Jones RG, Keuler K, Kjellström E, Knist S, Kotlarski S, Maraun D, van Meijgaard E, Mercogliano P, Montávez JP, Navarra A, Nikulin G, de Noblet-Ducoudré N, Panitz H-J, Pfeifer S, Piazza M, Pichelli E, Pietikäinen J-P, Prein A, Preuschmann S, Rechid D, Rockel B, Romera R, Sánchez E, Sieck K, Soares PMM, Somot S, Srnec L, Sørland SL, Termonia P, Truhetz H, Vautard R, Warrach-Sagi K, Wulfmeyer V (2020) Regional climate downscaling over Europe: perspectives from the EURO-CORDEX community. *Regional Environmental Change* 20 (2): 51. <https://doi.org/10.1007/s10113-020-01606-9>
- Loureiro A, Almeida N, Carretero MA, Paulo OS (2008) Atlas dos anfíbios e répteis de Portugal. Instituto da Conservação da Natureza e da Biodiversidade. Lisboa, 257 pp.
- Martí R, Del Moral JC (2003) Atlas de las aves reproductoras de España. Dirección General de Conservación de la Naturaleza-Sociedad Española de Ornitología.
- Navarro L, Pereira H (2012) Rewilding abandoned landscapes in Europe. *Ecosystems* 15 (6): 900-912. <https://doi.org/10.1007/s10021-012-9558-7>
- Newbold T (2018) Future effects of climate and land-use change on terrestrial vertebrate community diversity under different scenarios. *Proceedings of the Royal Society B: Biological Sciences* 285 (1881). <https://doi.org/10.1098/rspb.2018.0792>
- Nogués-Bravo D, Rodríguez-Sánchez F, Orsini L, de Boer E, Jansson R, Morlon H, Fordham D, Jackson S (2018) Cracking the code of biodiversity responses to past climate change. *Trends in Ecology & Evolution* 33 (10): 765-776. <https://doi.org/10.1016/j.tree.2018.07.005>
- Pausas JG, Millán MM (2019) Greening and browning in a climate change hotspot: The Mediterranean Basin. *BioScience* 69 (2): 143-151. <https://doi.org/10.1093/biosci/biy157>
- Pecl G, Araújo M, Bell J, Blanchard J, Bonebrake T, Chen I, Clark T, Colwell R, Danielsen F, Evengård B, Falconi L, Ferrier S, Frusher S, Garcia R, Griffis R, Hobday A,

- Janion-Scheepers C, Jarzyna M, Jennings S, Lenoir J, Linnetved H, Martin V, McCormack P, McDonald J, Mitchell N, Mustonen T, Pandolfi J, Pettorelli N, Popova E, Robinson S, Scheffers B, Shaw J, Sorte CB, Strugnell J, Sunday J, Tuanmu M, Vergés A, Villanueva C, Wernberg T, Wapstra E, Williams S (2017) Biodiversity redistribution under climate change: Impacts on ecosystems and human well-being. *Science* 355 (6332): eaai9214. <https://doi.org/10.1126/science.aai9214>
- Pleguezuelos JM, Marquez R, Lizana M (2002) Atlas y Libro Rojo de los anfibios y reptiles de España. Dirección General de Conservación de la Naturaleza-Asociación Herpetologica Española. 587 pp.
 - Raven P, Wagner D (2021) Agricultural intensification and climate change are rapidly decreasing insect biodiversity. *Proceedings of the National Academy of Sciences* 118 (2). <https://doi.org/10.1073/pnas.2002548117>
 - Sil Á, Fernandes P, Rodrigues AP, Alonso J, Honrado J, Perera A, Azevedo J (2019) Farmland abandonment decreases the fire regulation capacity and the fire protection ecosystem service in mountain landscapes. *Ecosystem Services* 36 <https://doi.org/10.1016/j.ecoser.2019.100908>
 - Sillero N, Campos J, Bonardi A, Corti C, Creemers R, Crochet P, Crnobrnja Isailović J, Denoël M, Ficetola GF, Gonçalves J, Kuzmin S, Lymberakis P, de Pous P, Rodríguez A, Sindaco R, Speybroeck J, Toxopeus B, Vieites D, Vences M (2014) Updated distribution and biogeography of amphibians and reptiles of Europe. *Amphibia-Reptilia* 35 (1): 1-31. <https://doi.org/10.1163/15685381-00002935>
 - Sippel S, Meinshausen N, Fischer E, Székely E, Knutti R (2020) Climate change now detectable from any single day of weather at global scale. *Nature Climate Change* 10 (1): 35-41. <https://doi.org/10.1038/s41558-019-0666-7>
 - Thuiller W, Lafourcade B, Engler R, Araújo M (2009) BIOMOD - a platform for ensemble forecasting of species distributions. *Ecography* 32 (3): 369-373. <https://doi.org/10.1111/j.1600-0587.2008.05742.x>
 - Triviño M, Kujala H, Araújo M, Cabeza M (2018) Planning for the future: identifying conservation priority areas for Iberian birds under climate change. *Landscape Ecology* 33 (4): 659-673. <https://doi.org/10.1007/s10980-018-0626-z>
 - Turner M, Calder WJ, Cumming G, Hughes T, Jentsch A, LaDeau S, Lenton T, Shuman B, Turetsky M, Ratajczak Z, Williams J, Williams AP, Carpenter S (2020) Climate change, ecosystems and abrupt change: science priorities. *Philosophical Transactions of the Royal Society B: Biological Sciences* 375 (1794). <https://doi.org/10.1098/rstb.2019.0105>
 - Whittaker R, Araújo M, Jepson P, Ladle R, Watson JM, Willis K (2005) Conservation biogeography: Assessment and prospect. *Diversity and Distributions* 11 (1): 3-23. <https://doi.org/10.1111/j.1366-9516.2005.00143.x>

Supplementary material

Suppl. material 1: Pearson correlation analysis between bioclimatic variables [doi](#)

Authors: João C. Campos; Sara Rodrigues; Teresa Freitas; João A. Santos; João P. Honrado, Adrián Regos

Data type: Statistical analyses

[Download file](#) (543.99 kb)