

Syracuse University

## SURFACE at Syracuse University

---

Office of Research

---

11-17-2020

### Providing Robust Research Support Services at Syracuse University Through Cross-campus Partnerships

Christina Leigh Doctuer

*Syracuse University*, [cdocteur@syr.edu](mailto:cdocteur@syr.edu)

Chetna Chianese

*Syracuse University*, [cchianes@syr.edu](mailto:cchianes@syr.edu)

Emily K. Hart

*Syracuse University*, [ekhart@syr.edu](mailto:ekhart@syr.edu)

Brenna Helmstutler

*Syracuse University*, [bhelmstu@syr.edu](mailto:bhelmstu@syr.edu)

Anne E. Rauh

*Syracuse University*, [aerauh@syr.edu](mailto:aerauh@syr.edu)

Follow this and additional works at: <https://surface.syr.edu/research>



Part of the [Higher Education Commons](#)

---

#### Recommended Citation

Docteur, Christina Leigh, Chetna Chianese, Emily K. Hart, Brenna Helmstutler and Anne E. Rauh. "Providing Robust Research Support Services at Syracuse University Through Cross-campus Partnerships." presented at OCLC Research Library Partnership Works in Progress Webinar, November 17, 2020.

This Article is brought to you for free and open access by SURFACE at Syracuse University. It has been accepted for inclusion in Office of Research by an authorized administrator of SURFACE at Syracuse University. For more information, please contact [surface@syr.edu](mailto:surface@syr.edu).



# Providing Robust Research Support Services at Syracuse University Through Cross-campus Partnerships



# Presenters



Christina Leigh Docteur  
Office of Research



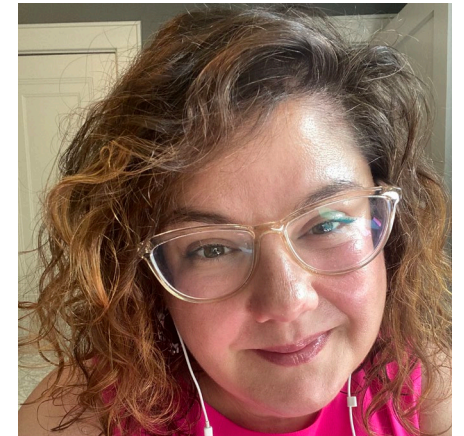
Chetna Chianese  
Office of Research



Emily Hart  
Libraries



Brenna Helmstutler  
Libraries



Anne Rauh  
Libraries

# Agenda

- Your profiles
  - Please share you name & institution in chat!
- Our unit profiles
- Collaboration activities
  - Research reputation
  - Learning, training, and networking
  - Administration
  - Future efforts
- Conclusion
- Questions



# Setting the Stage

# Syracuse University

- Private research university
- R1 (Research Intensive) Carnegie Classification of Institutions of Higher Ed (up from R2 in 2015)
- 15,000 undergraduates
- 5,000 graduate students



# Restructuring to Focus on Research

## New & Unique Campus Support Structures

- Office/division restructuring
  - Office of Research: Proposal Support Services – 3 new positions
  - Libraries: Dept of Research & Scholarship (DRS) – focus teams including Digital & Open Scholarship and Research Impact
- Associate Deans for Research (ADRs) Leadership Group
  - Response to SU's mission of increasing research trajectory
- Initiatives to support & promote interdisciplinary research
  - Intramural grants, new faculty hires, and interdisciplinary research clusters

# Office of Research

- 5 administrative units and main office
- Led by Interim VPR since January 2020
- ~40 total staff
- 2 interdisciplinary centers also included but operate independently





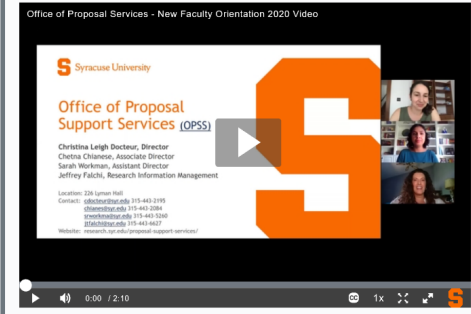
# Proposal Support Services

- New research development arm of Office of Research
- Manage intramural grants, limited submission, & many award nominations
- Funding opportunity circulation
- Grant development for large or multidisciplinary projects
- Hub of “SU RD Team” working with staff in schools, colleges & other units (like library!)

The Office of Proposal Support Services is responsible for supporting Syracuse University's proposal, research and faculty development efforts. This includes facilitating team-based collaboration around strategic funding opportunities, and managing the University's internal funding competitions, including both seed grant programs and externally funded limited submissions.

**In this Section**

- About Proposal Support Services
- Finding Funding Opportunities
- Sponsored Funding Opportunities
- Internal Grant Programs
- Limited Submissions
- Proposal Support Services Inquiry Form



Office of Proposal Services - New Faculty Orientation 2020 Video

Syracuse University

Office of Proposal Support Services (OPSS)

Christina Leigh Docteur, Director  
Chetna Chahese, Associate Director  
Sarah Workman, Assistant Director  
Jeffrey Falch, Research Information Management

Location: 228 Lyman Hall  
Contact: cdocteur@syr.edu | 315-443-1195  
chahese@syr.edu | 315-443-2094  
workman@syr.edu | 315-443-2340  
falch@syr.edu | 315-443-4627

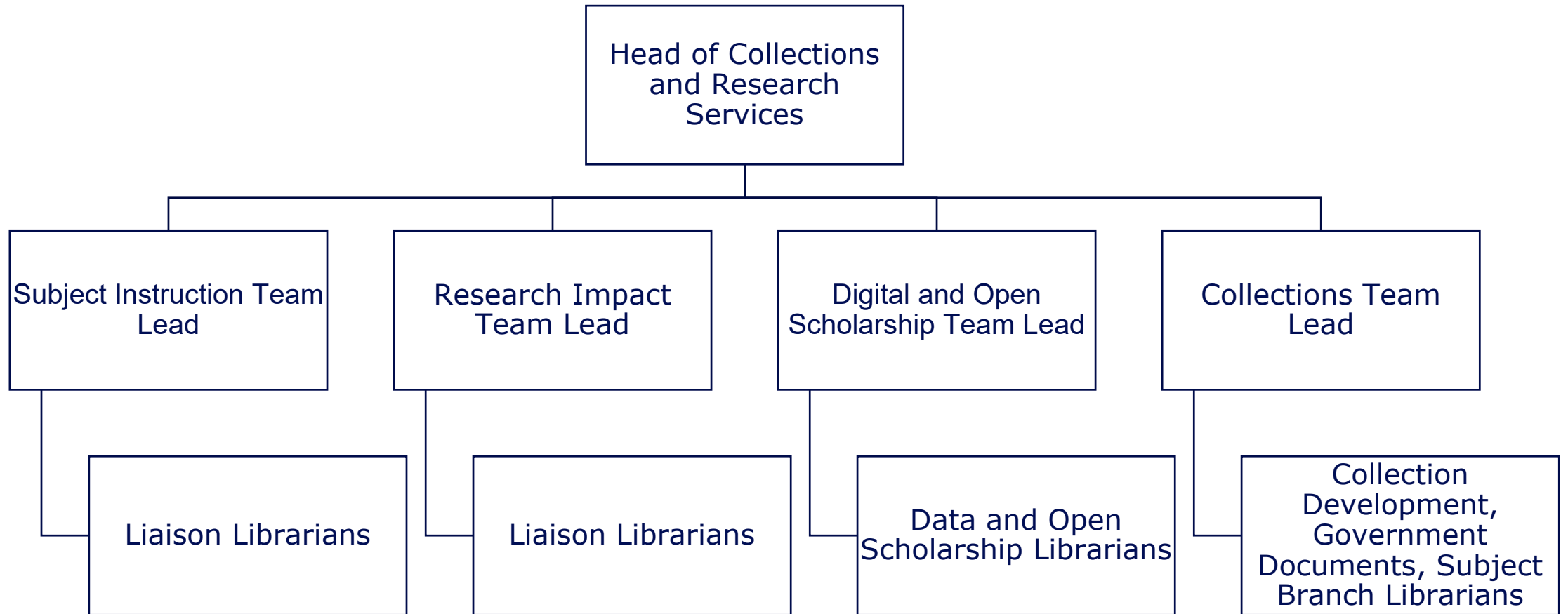
Website: <https://www.syr.edu/proposal-support-services/>

# Syracuse University Libraries

- 4.8 million items
- 1.2 million visits annually
- 205 total staff FTE
  - 53 librarians
  - 161 student employees
- Organized like academic college
  - Dean reports to provost
  - Associated deans focused on research & academics
- Includes Syracuse University Press



# Department of Research and Scholarship



# What Prompted Collaboration?

**Syracuse University**

Home Profiles **Research Units** Equipment Grants Research Output Activities ... Search

## Maxwell School of Citizenship & Public Affairs

Syracuse University

Overview Fingerprint Network Profiles (129) Grants (339) Research Output (2810) Activities (2) ...

### Fingerprint

Dive into the research topics where Maxwell School of Citizenship & Public Affairs is active. These topic labels come from the works of this organization's members. Together they form a unique fingerprint.

- Panel Data  
BUSINESS & ECONOMICS
- Evidence  
SOCIAL SCIENCES
- Politics  
SOCIAL SCIENCES
- Geography  
SOCIAL SCIENCES
- Estimator  
BUSINESS & ECONOMICS
- Policy  
EARTH & ENVIRONMENTAL SCI...
- Labor  
SOCIAL SCIENCES
- Random Effects  
BUSINESS & ECONOMICS

# Research Impact Team

Team focuses on supporting the University Research Enterprise at both institutional and individual level.

- RIM System
- Research Metrics
- Responsible Metrics
- Research Reputation
- ORCID
- Funding Discovery
- Systematic Reviews

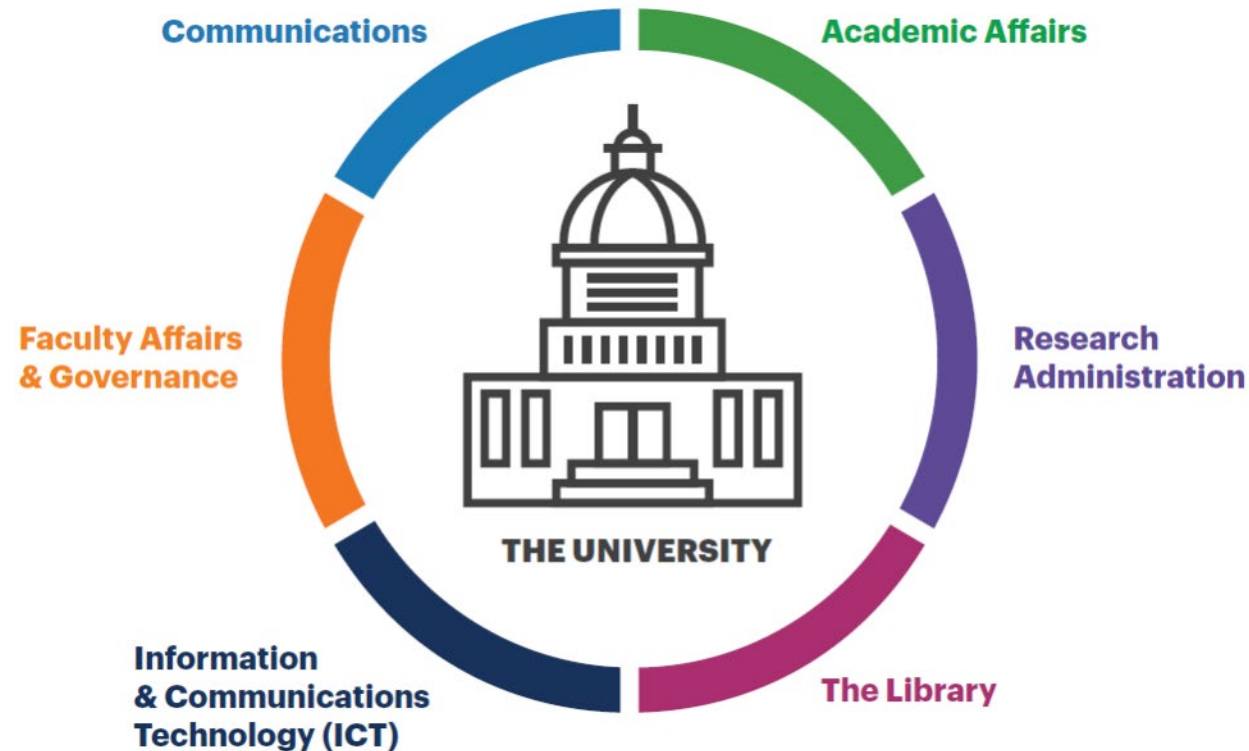
# Identifying & Filling in the Gaps

- From independent reactionary services to...
  - Exploring where we overlap
  - Shared planning & collaboration
  - Greater reach



# Collaboration Activities: Research Reputation

# Cross-Campus Partners & Shared Learning



Bryant, Rebecca, Annette Dortmund, and Brian Lavoie. 2020. *Social Interoperability in Research Support: Cross-Campus Partnerships and the University Research Enterprise*. Dublin, OH: OCLC Research. <https://doi.org/10.25333/wyrd-n586>



# Experts@Syracuse (Pure)

- Jointly Managed
- Experts includes: faculty profiles, reporting module, & funding sources
- Subject librarians have profiles
- Graduate student support

The screenshot shows the homepage of the Experts@Syracuse website. At the top left is the Syracuse University logo. The main heading reads "Welcome to Experts@Syracuse". Below this is a search bar with a magnifying glass icon and a link to "Advanced search". A banner image featuring a 3D model of a coronavirus is overlaid with the text: "We're committed to doing all we can to assist in the global response to the Coronavirus (COVID-19) pandemic." To the right of the banner, it says "Explore all our related research and expertise". Below the banner is a navigation bar with six categories, each with an icon and a count: Profiles (737), Research Units (71), Equipment (57), Grants (3010), Research Output (32639), and More (13889). At the bottom, the text "Experts@Syracuse" is followed by a paragraph explaining the tool's purpose and providing links for "Search for Funding", "Sign in here", and "Log into Pure link at the bottom of any page". A link to the "Experts Guide" and an email address "experts@syr.edu" are also provided.

# Research Reputation

- Scopus & Web of Science Affiliation
- Research Metrics Challenge

Collaboration Activities:  
Learning, Training, and Networking

# Tools for Learning

- Research Guides – ORCID, DMPTool, Scopus, Mendeley, InCites
- Funding Discovery
  - Pivot
  - Foundation Directory Online

# Training Activities & Workshops

- Joint hosting of trainings for the tools for learning
  - Ex. Funding Discovery Tools for Librarians
- Utilizing Experts@Syracuse
- Women in Science & Engineering (WISE) Graduate Student Sessions
  - Research impact
  - Funding opportunities

# Networking

- Pure User Group - PSS & Library reps attended conference
- Faculty FUNding
  - Faculty award winners share experience, tools discussed for funding discovery and research reputation.
  - Plan to reframe content in virtual format

# Collaboration Activities: Administration

# Shared Costs Savings

Shared costs = more resources

- More resources for research initiatives & staff development
  - PURE “Experts” \$\$ split; jointly sponsoring sessions for 2x coverage at 1/2 cost; hosting more on-campus visitors
- United front with vendors
- Or ... less resource cutting due to COVID-based strain



# Leveraging Platforms, Data & Knowledge

- Institutional repository
- Data management and grant compliance
- Open access journal support

# Selected Future Collaborations

- Reactionary to evidence-based planning
- Needs assessment
- ORCID institutional subscription
- Understanding university rankings
- Shared promotion of resources and services
- New faculty/staff joint training opportunities

Conclusion

# Interoperability Challenges

- Language
  - Research Administration versus Research Development
  - Proposal Development
- Working together
  - Google Drive versus Microsoft OneDrive
  - Scheduling via Outlook

# Takeaways from the Joint Efforts

- Enhanced Syracuse University visibility (and reputation!)
- Understanding evolution of research emphasis
- Strong line of communication and shared goals between units
- Overall, positive outcomes for faculty, staff, students

Connecting pieces of the research lifecycle

# Questions?

Christina Leigh Docteur, Office of Research, [cdocteur@syr.edu](mailto:cdocteur@syr.edu)

Chetna Chianese, Office of Research, [cchianes@syr.edu](mailto:cchianes@syr.edu)

Emily Hart, Syracuse University Libraries, [ekhart@syr.edu](mailto:ekhart@syr.edu)

Brenna Helmstutler, Syracuse University Libraries, [bhelmstu@syr.edu](mailto:bhelmstu@syr.edu)

Anne Rauh, Syracuse University Libraries, [aerauh@syr.edu](mailto:aerauh@syr.edu)

