

Connecticut College Digital Commons @ Connecticut College

Historic Sheet Music Collection

Greer Music Library

1906

At Dawning

Charles Wakefield Cadman

Nelle Richmond Eberhart

Follow this and additional works at: <http://digitalcommons.conncoll.edu/sheetmusic>

Recommended Citation

Cadman, Charles Wakefield and Eberhart, Nelle Richmond, "At Dawning" (1906). *Historic Sheet Music Collection*. Paper 1330.
<http://digitalcommons.conncoll.edu/sheetmusic/1330>

This Score is brought to you for free and open access by the Greer Music Library at Digital Commons @ Connecticut College. It has been accepted for inclusion in Historic Sheet Music Collection by an authorized administrator of Digital Commons @ Connecticut College. For more information, please contact bpancier@conncoll.edu.

The views expressed in this paper are solely those of the author.

AT DAWNING

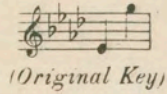
When the dawn flames in the sky,
 I love you;
When the birdlings wake and cry,
 I love you;
When the swaying blades of corn
Whisper soft at breaking morn
Love to me anew is born,
 I love you.

Dawn and dew proclaim my dream,
 I love you;
Chant the birds one thrilling theme,
 I love you;
All the sounds of morning meet,
Break in yearning at your feet;
Come and answer, come, my sweet,
 I love you.

Nelle Richmond Eberhart

AT DAWNING (I LOVE YOU)

NELLE RICHMOND EBERHART



(Original Key)

CHARLES WAKEFIELD CADMAN
Op. 29, No. 1

con molta espress.

VOICE

PIANO

mf *rit.* *mp a tempo*

la melodia marcata

When the dawn flames in the sky

I love you; When the bird - lings wake and cry, I love

you; When the sway - ing blades of corn Whis - per soft at

cresc. *affettuoso* *rall.*

break - ing morn, Love a - new to me is born, I love you, I

rall.

Orchestra parts, price 50¢

Copyright MCMVI by Oliver Ditson Company
International Copyright Secured

5-27-66088-3

love you. Dawn and dew pro - claim my dream,

a tempo *rit.* *pp*

I love you; Chant the birds one thrill - ing theme I love

you; All the sounds of morn - ing meet, Break in yearn - ing

cresc.
at your feet. Come and an - swer, come, my sweet, I love you I love you

GOIN' HOME

From the Largo of the symphony
"From the New World" Op. 95
High, in Eb Med., in Db

Words and adaptation by
WILLIAM ARMS FISHER
Largo (♩ = 52)

ANTON DVOŘÁK

Go-in' home, go-in' home, I'm a-go-in' home; Qui-et like, some still day, I'm jes' go-in' home.

p

pp

pp

Price, 60 cents

GOIN' TO SHOUT

High, in C Med., in A

Negro Spiritual

Harmonized by CHARLES FONTEYN MANNEY

Joyfully, not too fast

I got a robe, you got a robe, All of God's chil-dren got a robe; When I get to heav'n goin' to

mf

mp

mp leggiero

mp

Price, 60 cents

SLEEPIN' TIME

FRANCIS J. SAUNDERS

High, in Ab

Med., in F

CHARLES HUERTER

Moderato

p espressivo

Come yere, li'l Hon-ey, Come yer 'long to bed, Drop yo' li'l play-toy, Time to rest yo' haid;

p

Price, 60 cents

TO LIVE AND LOVE AGAIN

High, in F

Med., in Eb

Low, in C

CARL CLEMSON

Andante espressivo

HARTLEY MOORE
Composer of "Dreaming Alone in the Twilight"

I stand a-lone by the throb-bing sea, And the heav-y skies hang gray -

mp

mp

Price, 60 cents

Entire list copyright