

Connecticut College Digital Commons @ Connecticut College

Historic Sheet Music Collection

Greer Music Library

1918

Sleep, My Darling

Elsie Jean Stern

Mana Zucca

Follow this and additional works at: <http://digitalcommons.conncoll.edu/sheetmusic>

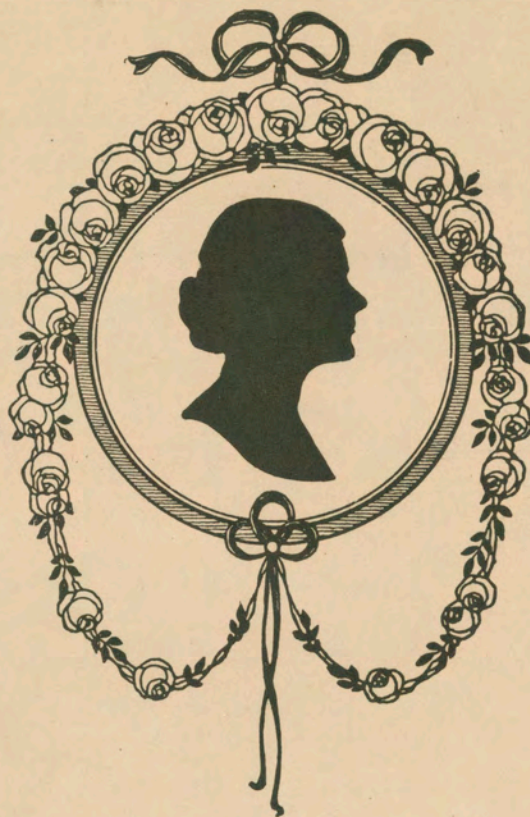
Recommended Citation

Stern, Elsie Jean and Zucca, Mana, "Sleep, My Darling" (1918). *Historic Sheet Music Collection*. Paper 1263.
<http://digitalcommons.conncoll.edu/sheetmusic/1263>

This Score is brought to you for free and open access by the Greer Music Library at Digital Commons @ Connecticut College. It has been accepted for inclusion in Historic Sheet Music Collection by an authorized administrator of Digital Commons @ Connecticut College. For more information, please contact bpancier@conncoll.edu.

The views expressed in this paper are solely those of the author.

M A N A - Z U C C A



Songs

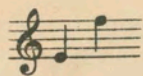
	Net		Net
<i>Behold, 'tis Dawn</i>	.60	<i>Eve and a Glowing West</i>	.60
Medium, E		Medium, Eb	
<i>Love's Coming</i>	.60	<i>Tell Me if This be True</i>	.60
High, G		Medium, Eb; Low, C	
<i>Persian Song</i>	.60	<i>Fairest of all</i> (Più bello del sole)	.60
High, G minor; Medium, F minor		High, Ab; Medium, Eb	
<i>First Love</i> (Et l'on revient toujours)	.60	<i>Rose-Marie</i>	.60
High, G; Low, Eb		High, D; Low, Bb	
<i>Tear Drops</i>	.60	<i>When the Day has Flown</i>	.60
High, Ab; Low, F		High, G minor; Medium, E minor	
<i>Sleep, my Darling</i>	.60 .50	<i>Daddy's Little Boy</i>	.60
High, A minor; Low, F minor		High, F; Low D	

THE BOSTON MUSIC CO · BOSTON

G. SCHIRMER · NEW YORK

Sleep, my darling

Elsie Jean Stern


 Mana Zucca, Op. 39, No. 12
 From "In Youngsterland"

Andantino e sognando

Voice

Piano

p
dolce
pp

Red. * *Red.* * *Red.* * *Red.* *

dolce

Sleep, dar-ling, go to sleep,- Gold-en stars at you now peep -

p

See, each twinkling lit - tle light Comes to bid my babe good night,

Red. *Red.* *Red.* *Red.*

 Copyright, 1918, by The Boston Music Co.
 For all countries

rall. *a tempo*

Peaceful be your slumbers deep, Sleep, my dar - ling, go to sleep. —

rall. *a tempo*

Ad. *Ad.* * *Ad.* *

Sleep, — darling, go to sleep — Mother lov - ing

p

Ad. * *Ad.* * *Ad.* * *Ad.*

watch will keep, Ba - by mine in peace may rest, Angels guard your lit - tle nest,

Ad. *Ad.* * *Ad.* *

rall.

Faithful watch they ev - er keep, sleep, my dar - ling, Ah,

rall.

a tempo *espressivo*

sleep, _____ Ah, _____ go to sleep; May God pro-tect you,

a tempo

an - gel sweet, Sleep, my dar - ling, go to sleep, _____

poco rit.

Ah, ——— go to sleep, nes-tle close to mother's heart,

poco rit.

rit.

Then for slum - ber - land we'll start. ——— go to sleep.

più lento rit.

rit.

più lento

rit.

Lento

(humming). ———

(tempo)

p

pp morendo

Successful Songs by Mana Zucca

Behold, 'tis dawn

ELSIE J. STERN

MANA ZUCCA. Op. 20, No. 1

Fantastico, quasi senza tempo

Voice

Piano

p

rall.

The day has kiss'd the night to rest.

a tempo

p

Once more the soft-est ro-sea- morn.

B. M. Co. 5788 a

Copyright, 1918, by The Boston Music Co.
For all countries

Behold, 'tis Dawn

Medium, E

Eve and a Glowing West

Medium, E \flat

Fairest of all

Medium, E \flat

First Love

High, G

Love's Coming

High, G

Persian Song

High, G minor; Medium, F minor

Rose-Marie

High, D; Low, B \flat

Tear Drops

High, A \flat ; Low, F

Tell Me if This be True

Medium, E \flat ; Low, C

When the Day has Flown

Medium, E minor

Price, each, .60 net

Artists singing Mana Zucca songs

Frances Alda

Lucrezia Bori

Carl Braun

Florence Easton

Johanna Gadski

Amelita Galli-Curci

Alma Gluck

Christine Langenhan

Giuseppe de Luca

Florence Macbeth

Leon Rothier

Andreas de Seguro-la

Vernon Stiles

Herman Weil

First love

Et l'on revient toujours

ETIENNE

Andante

MANA ZUCCA
Op. 31

Voice

Piano

col pedale

Mad with the
Dans un d \acute{e} .

fire of pas-sion, Al-ways new chains we fash-ion,
l'iv-re ex-tr \acute{e} -me on veut faire ce qu'on a-t-me,

Breaking those that bound us, Forging oth-ers round us.
on pr \acute{e} -tend se ven-ger, on fu-re de chan-ger.

B. M. Co. 5788

Copyright, 1918, by The Boston Music Co.
For all countries

Boston Music Company, Boston, Mass.