

Connecticut College Digital Commons @ Connecticut College

Historic Sheet Music Collection

Greer Music Library

1838

'Twere Vain to Tell Thee All I Feel

F. Stockhausen

Follow this and additional works at: <https://digitalcommons.conncoll.edu/sheetmusic>

Recommended Citation

Stockhausen, F., "'Twere Vain to Tell Thee All I Feel" (1838). *Historic Sheet Music Collection*. 879.
<https://digitalcommons.conncoll.edu/sheetmusic/879>

This Score is brought to you for free and open access by the Greer Music Library at Digital Commons @ Connecticut College. It has been accepted for inclusion in Historic Sheet Music Collection by an authorized administrator of Digital Commons @ Connecticut College. For more information, please contact bpancier@conncoll.edu.

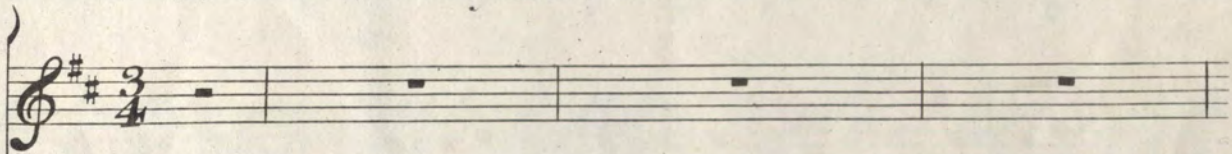
The views expressed in this paper are solely those of the author.

'TWERE VAIN TO TELL THEE ALLI FEEL.
A Favourite
Swiss Air
Composed by

F. STOCKHAUSEN.

New York Published by E. RILEY & C^o 29 Chatham St.

VOICE.



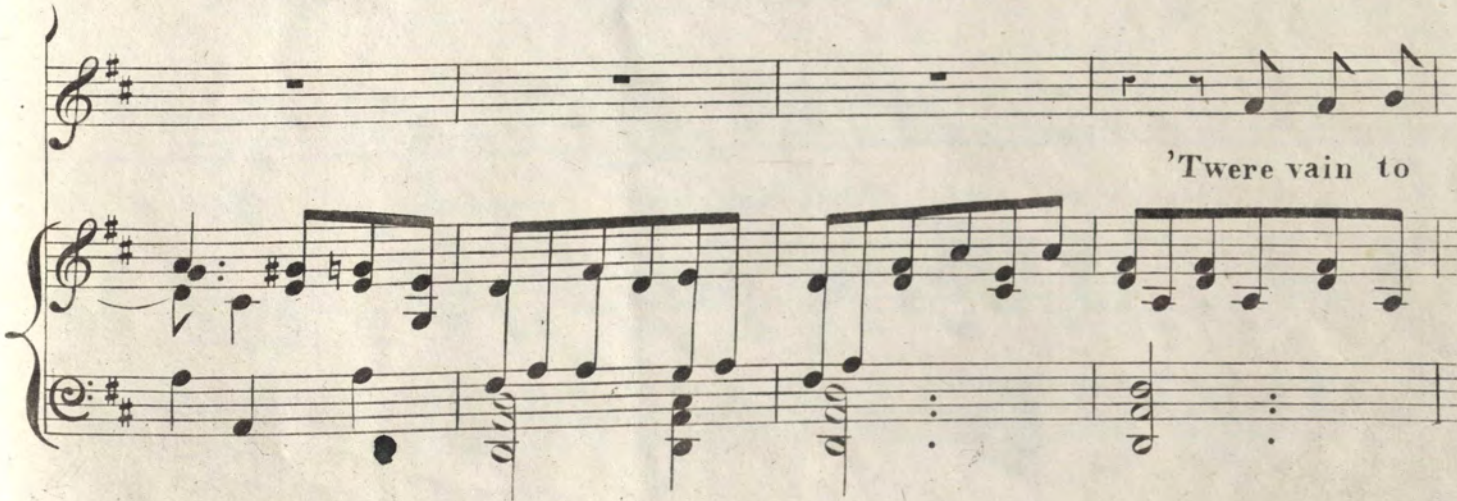
ALLEGRETTO QUASI ANDANTE.

PIANO

FORTE.



'Twere vain to



tell thee all I feel Or say for thee I'd die, or say for thee I'd die; I find that

words will but con - ceal What my soul would wish to sigh.

Ah! well a day the sweetest melody Cou'd never never say one half my love for thee Then let me

si - - lent - ly re - veal What my soul would wish to sigh!

The first system consists of a vocal line on a single staff and a piano accompaniment on two staves. The key signature has one sharp (F#) and the time signature is 4/4. The vocal line begins with a whole rest, followed by a series of quarter notes. The piano accompaniment features a rhythmic pattern of eighth and sixteenth notes in the right hand and chords in the left hand.

Thou'st often call'd my voice a Bird's Whose music like a spell, whose music

The second system continues the vocal and piano parts. The vocal line has a dynamic marking of *pp* (pianissimo) under the first few notes. The piano accompaniment continues with its established rhythmic and harmonic structure.

like a spell, Could changeto rap_ture ev'n the words of our slow and sad fare

The third system continues the vocal and piano parts. The vocal line has a dynamic marking of *pp* (pianissimo) under the first few notes. The piano accompaniment continues with its established rhythmic and harmonic structure.

well!

The fourth system concludes the vocal and piano parts. The vocal line has a dynamic marking of *pp* (pianissimo) under the first few notes. The piano accompaniment continues with its established rhythmic and harmonic structure, ending with a double bar line.

