

1922

Lovey Dove

Sigmund Romberg

Harold Richard Atteridge

J.J. Shubert

Follow this and additional works at: <http://digitalcommons.conncoll.edu/sheetmusic>

Recommended Citation

Romberg, Sigmund; Atteridge, Harold Richard; and Shubert, J. J., "Lovey Dove" (1922). *Historic Sheet Music Collection*. Paper 870.
<http://digitalcommons.conncoll.edu/sheetmusic/870>

This Score is brought to you for free and open access by the Greer Music Library at Digital Commons @ Connecticut College. It has been accepted for inclusion in Historic Sheet Music Collection by an authorized administrator of Digital Commons @ Connecticut College. For more information, please contact bpancier@conncoll.edu.

The views expressed in this paper are solely those of the author.

LOVEY DOVE



The ROSE of STAMBOUL

OPERETTA IN 3 ACTS

BY J. BRAMMER
AND A. GRÜNWALD

AMERICAN VERSION AND LYRICS BY
HAROLD ATTERIDGE

MUSIC BY
**LEO FALL AND
SIGMUND ROMBERG**

(BY ARRANGEMENT WITH M. WITMARK & SONS)

THE ROSE OF STAMBOUL
LOVEY DOVE
MY HEART IS CALLING
TIME, ONLY TIME, DEAR
A WALTZ IT SHOULD BE
MAZUMA
THE ROSE FEAST
WHEN WE ARE HONEYMOONING
LITTLE BLUE BOOK
TINGALING
NO MORE GIRLS
THE GIRLS FROM THE CULTURED WEST

SELECTION
VOCAL SCORE

UNDER THE PERSONAL DIRECTION
OF MR. J. J. SHUBERT

THE TAMA MUSIC
PUBLISHING CORP.
NEW YORK

MADE IN
U. S. A.

STARMER

Lovey Dove

(DUET, HOWARD AND MIDILI)

Lyrics by
HAROLD ATTERIDGE

Music by
SIGMUND ROMBERG

Allegro moderato

There are man - y
Lov - ing sweet - hearts

love words new; Are there an - y that will do for you?
al - ways look For sweet phras - es in Dan Cu - pid's book.

What ex - press - ion words could I take
Though these love words are not new,

In my con - fess - ion that I want to make?
These love words, Dear - ie, all ap - ply to you.

Chorus

Love - y Dove, cud - dle up, Dove - y dove, hud - dle up

The first system of the chorus features a vocal line with a melody of eighth and quarter notes. The piano accompaniment consists of a right hand with chords and moving lines, and a left hand with a simple bass line. The key signature has three flats (B-flat, E-flat, A-flat) and the time signature is 4/4.

near me, Hon - ey Lamb, I'm for you,

The second system continues the vocal melody with a long note for 'me,' followed by 'Hon - ey Lamb, I'm for you,'. The piano accompaniment provides harmonic support with chords and melodic fragments.

'deed I am, Hon - ey - dew Dear - ie!

The third system features the vocal line with 'deed I am, Hon - ey - dew Dear - ie!'. The piano accompaniment includes a prominent bass line with chords and some melodic movement in the right hand.

You're my pre - cious, pre - cious, you're just love com - plete;

The final system of the chorus has the vocal line 'You're my pre - cious, pre - cious, you're just love com - plete;'. The piano accompaniment features a steady bass line and chords in the right hand.

I a dore you, for you're so sweet - ie,

sweet. Toot - sie Dear, rest up near,

Woot - sie Dear, nest up near, Kiss me!

If I go, If I should

whisp-er low, say you would miss me!

From my heels to head I'll tell you, I am dead in love.

Ev' - ry day, more and more, I a - dore Love - y

molto rall.

Dove! Dove!

THE LAST WALTZ.

Operetta in 3 Acts

Book by J. Brammer and A. Grünwald,

American Adaptation by

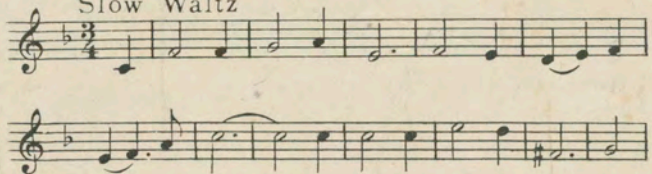
Edw. Delaney Dunn and Harold Atteridge,

Music by Oscar Straus.



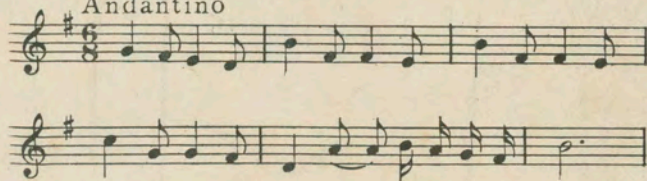
The Last Waltz

Slow Waltz



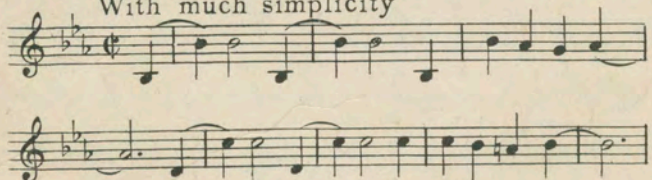
Roses Out Of Reach

Andantino



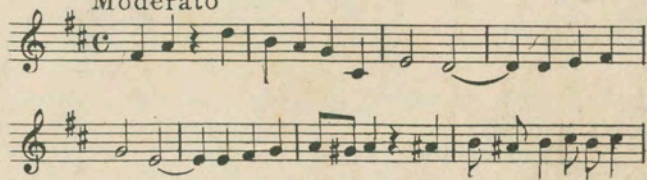
A Baby In Love

With much simplicity



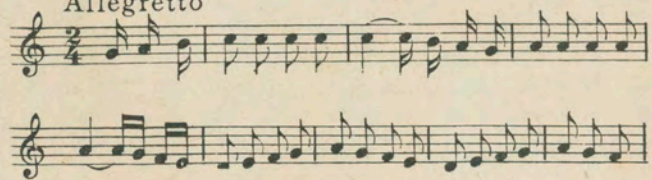
Live For To-day

Moderato



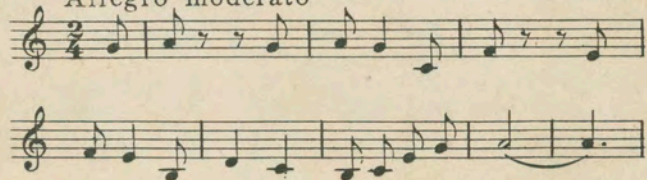
The Gallant Cavalier

Allegretto



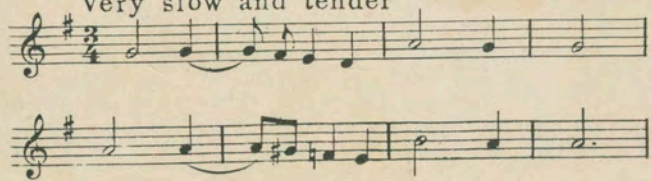
The Charming Ladies

Allegro moderato



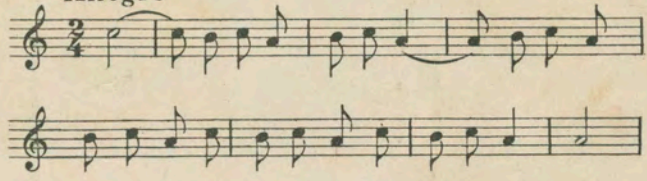
Now Fades My Golden Love Dream

Very slow and tender



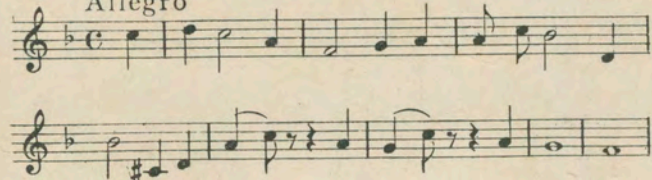
The Whip Hand

Allegro



The Next Dance With You

Allegro



Waltzing Is Spreading from Land To Land

Tempo di Valse

