

Connecticut College Digital Commons @ Connecticut College

Historic Sheet Music Collection

Greer Music Library

1920

Jennie

Garfield Kilgour

Henry Bergman

Lou Handman

Follow this and additional works at: <http://digitalcommons.conncoll.edu/sheetmusic>

Recommended Citation

Kilgour, Garfield; Bergman, Henry; and Handman, Lou, "Jennie" (1920). *Historic Sheet Music Collection*. Paper 750.
<http://digitalcommons.conncoll.edu/sheetmusic/750>

This Score is brought to you for free and open access by the Greer Music Library at Digital Commons @ Connecticut College. It has been accepted for inclusion in Historic Sheet Music Collection by an authorized administrator of Digital Commons @ Connecticut College. For more information, please contact bpancier@conncoll.edu.

The views expressed in this paper are solely those of the author.

Jennie



Words by
GARFIELD KILGOUR
and
HENRY BERGMAN

Music by
LOU HANDMAN

Irving Berlin, Inc.
Music Publishers
1587 Broadway
New York

©
R.S.

Jennie

Words by
GARFIELD KILGOUR
and HENRY BERGMAN

Music by
LOU HANDMAN

Moderato

ff

Till Ready

sfz *p*

Detailed description: This block contains the piano introduction. It starts with a 'Moderato' tempo marking and a fortissimo (*ff*) dynamic. The music is in 2/4 time and features a melody in the right hand and a bass line in the left hand. The introduction concludes with a 'Till Ready' section marked with *sfz* and *p* dynamics.

Down town — ov - er Ho - gan's store I found — what I'm looking for She's the sweetest
Some day com - ing pret - ty soon I'll say in the month of June Jen - nie, you're my

p

Detailed description: This block shows the first line of the song. The vocal line is written in a single staff with lyrics underneath. The piano accompaniment is in two staves. The dynamic is marked *p* (piano).

gal Jen - nie she's my pal. Just she — in that ten - e - ment
pride Won't you be my bride? You guess what she'll answer me

Detailed description: This block shows the second line of the song. The vocal line continues with lyrics. The piano accompaniment continues in two staves.

Fills me — full of sen - ti - ment She'll be mine some day 'Cause ev'ry time we meet I say.
Just "Yes" if you wait you'll see Then I'll steal a kiss And start to whis - per words like this.

Detailed description: This block shows the third line of the song. The vocal line concludes with lyrics. The piano accompaniment continues in two staves.

THE
NUM
e
be
for
Phon
or
Pla
Pi

CHORUS

Jen - nie love me just a lit-tle Jen - nie Why I'd spend me ev'ry pen - ny

Just to win your heart Your sis-ter Mol - ly loves me lit-tle brudder Chol-ly

That's why he's jol - ly 'Cause she makes him glad while I feel sad Why ev'ry Sal-ly in our

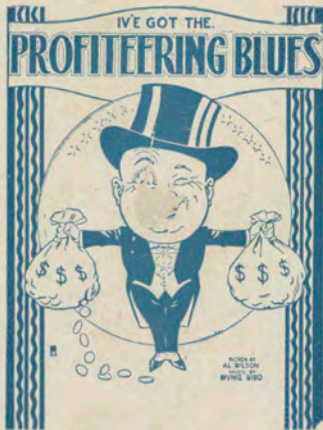
al - ley Would be glad if I'd be pal - ly But for me there's just one gal, see And I'm pretty

wise I go to night school Yes, and me teacher says I'm no fool Gee you're the

sweetest gal of an - y Jen - nie dear, dear.

THIS
BER
an
had
your
ograph
your
yer-
ano

A SENSATIONAL COMEDY SONG HIT



I'VE GOT THE **PROFITEERING BLUES**



Chorus — I've got the

Prof i-teer-ing blues. — I've got the Prof-i-teer-ing blues — High pric-es make me sick for all my

clothes are worn through, — I'll have to dress like A - dam but what else can I do, — I've got the

prof-i - teer-ing blues — I can't af - ford to buy — a pair of shoes. —

Copyright MCMXX by Irving Berlin Inc., 1587 Broadway, New York City
International Copyright Secured All Rights Reserved

FOR SALE WHEREVER MUSIC IS SOLD.