

## Connecticut College Digital Commons @ Connecticut College

---

Historic Sheet Music Collection

Greer Music Library

---

1902

# Because

Guy d' Hardelot

Edward Teschemacher

Follow this and additional works at: <http://digitalcommons.conncoll.edu/sheetmusic>

 Part of the [Music Commons](#)

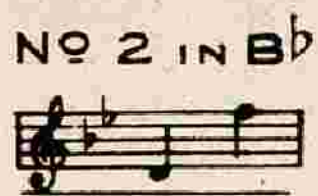
---

### Recommended Citation

Hardelot, Guy d' and Teschemacher, Edward, "Because" (1902). *Historic Sheet Music Collection*. Paper 21.  
<http://digitalcommons.conncoll.edu/sheetmusic/21>

This Score is brought to you for free and open access by the Greer Music Library at Digital Commons @ Connecticut College. It has been accepted for inclusion in Historic Sheet Music Collection by an authorized administrator of Digital Commons @ Connecticut College. For more information, please contact [bpancier@conncoll.edu](mailto:bpancier@conncoll.edu).

The views expressed in this paper are solely those of the author.



# BECAUSE

SONG

WORDS BY

EDWARD TESCHEMACHER

MUSIC BY

## GUY D'HARDELOT

ALSO PUBLISHED FOR

FEMALE OCTAVO (QUARTETTE FOR S.S.A.) .15  
MALE OCTAVO (QUARTETTE FOR T.T.B.B.) .15  
MIXED OCTAVO (QUARTETTE FOR S.A.T.B.) .15  
SONG ORCHESTRATION (IN Bb)  
14 PARTS AND PIANO .90  
10 PARTS AND PIANO .65

"BECAUSE" IN Bb AND "MY DREAMS" IN Db (DOUBLE NUMBER) FOR  
FULL BAND (CORNET SOLO) 2.00  
FULL ORCHESTRA (CORNET SOLO) (USE PIANO SOLO WITH THIS ARRANGEMENT 40¢ NET EXTRA) .75  
SMALL ORCHESTRA (CORNET SOLO) (USE PIANO SOLO WITH THIS ARRANGEMENT 40¢ NET EXTRA) .50

PRICE 50 CENTS

EXCEPT CANADA AND FOREIGN COUNTRIES

CHAPPELL & Co., Inc.  
RKO BUILDING - ROCKEFELLER CENTER  
NEW YORK, N.Y.

CHAPPELL & Co., Ltd.  
LONDON — PARIS  
SYDNEY

PRINTED IN U.S.A.

BISHOP STUDIO  
35 MAIN STREET  
NEW LONDON, CONN.

A NEW SONG BY THE WRITERS OF "IN THE GARDEN OF TO-MORROW"

# On Wings Of Memory

Words by  
THEKLA HOLLINGSWORTH

Music by  
JESSIE L. DEPPEN

Andantino

Piano

The piano introduction consists of two staves. The right hand features a series of chords and arpeggiated figures, while the left hand provides a steady accompaniment. Dynamics include *f*, *mf*, and *p*. The piece concludes with a fermata and a star symbol.

Con moto

Some - times when shad - ows are fall - ing, Dear - est, you

The first line of the song features a vocal melody in the treble clef and piano accompaniment in the grand staff. The tempo is marked *Con moto*. Dynamics include *p*.

come back to me; From the dim past re -

The second line continues the vocal melody and piano accompaniment. The piano part features a prominent bass line.

turn - ing On wings of mem - o - ry.

The third line concludes the vocal melody and piano accompaniment. The piano part features a prominent bass line.

Copyright MCMXXXIX by Chappell & Co. Inc., N. Y. C.

CHAPPELL & CO. INC., R K O Building, Rockefeller Center, New York, N. Y.

# BECAUSE

## SONG

3

Words by  
EDWARD TESCHEMACHER

Victor Record No. 87122  
" " " 64430  
" " " 64133  
Pathe " " 22476  
Vocalion " " 24017  
Brunswick " " 5082  
Gennett " " 10053

French words and  
Music by  
GUY d'HARDELLOT

**Poco Adagio**

VOICE

PIANO

*f legato*

Be - cause — you come to me — with naught save  
Lors - - que j'en-tends ton pas, — comme en un

*p*

*rit.*

*legato*

love, — And hold my hand and lift mine eyes a - bove, — A  
ré - - ve Le fol es - poir de te re - voir s'é - lè - ve Et,

Copyright, MCMII, by Chappell & Co., Ltd.

ALL RIGHTS RESERVED  
Including Public Performance For Profit

C. 5006-4

4

wi - - der world of hope and joy I see, Be -  
 vai - - ne - ment vers toi je tends les bras,

*Red.* *con tenerezza*  
*p poco rit.*  
 - cause you come to me.  
 Quand j'en - tends ton pas.

*p rit. colla voce* *mf*

*Red.*

*p ben legato*  
 Be - cause you speak to me in accents  
 Et quand di - vi - nement ta voix m'en -

*rit.* *p dolce legato*

*Red.* \* *Red.* \* *Red.* \* *Red.* \*

*mf* *piu f*  
 sweet, I find the ros - es wak - ing round my feet, And  
 - chai - ne, Je vois s'e - va - nou - ir tou - te ma pei - ne, Et

*cresc.* *cresc.*

*Red.* \* *Red.* \* *Red.* \* *Red.* \* *Red.* \* *Red.* \*

*poco agitato* *appassionato*

I am led through tears and joy to thee, Be -  
 tout ton être chante, et vibre en moi,

*rit. colla voce*

- cause you speak to me.  
 Quand j'en tends ta voix.

*mf* *f sosten.*

*f maestoso*

Be - cause God made thee  
 Et puis tu viens à

*p*

mine I'll cher - ish thee Through  
 moi et je fris - son - ne, Tu

6

light and dark-ness, through all time to be, — And  
*prends ma main, et tout mon cœur se don - - ne A*

pray His love may make our love di - vine, — Be -  
*toi en un bai - ser brû - lant d'é - moi,*

allar - gan - do  
 - cause God made thee mine. —  
*Car tu {viens} es à moi!*

*ff colla voce*

*sempre f*

A VERY PLEASING ENCORE NUMBER

# I Saw A Star Tonight

Words by  
LESTER O'KEEFE

Music by  
WILLIAM STICKLES

Moderato

Piano *mf* *rit*

The piano introduction is written for a grand piano in 4/4 time. It begins with a treble clef and a key signature of one sharp (F#). The tempo is marked 'Moderato'. The music starts with a series of chords and moving lines in both hands, marked with a mezzo-forte (*mf*) dynamic. The piece concludes with a deceleration marked 'rit'.

*p*

My eyes be-held to - night A love-ly thing to see;

*p a tempo*

The first line of the song features a vocal melody in the treble clef and piano accompaniment in the grand staff. The vocal line begins with a piano (*p*) dynamic. The lyrics are 'My eyes be-held to - night A love-ly thing to see;'. The piano accompaniment is marked 'a tempo' and provides harmonic support for the vocal line.

*poco rit*

Now I have words to tell you Just what you mean to me.

*poco rit*

The second line of the song continues the vocal melody and piano accompaniment. The tempo is marked 'poco rit' (ritardando). The lyrics are 'Now I have words to tell you Just what you mean to me.'. The piano accompaniment continues to support the vocal line.

Copyright MCMXXXIX by Chappell & Co. Inc., N. Y. C.

CHAPPELL & Co. INC., RKO Building, Rockefeller Center, New York, N.Y



# Four NEW WORTHWHILE STANDARD SONGS

**I'll Walk Beside You** Music by ALAN MURRAY

Words by EDWARD LOCKTON  
Slowly (with expression)

Piano

I'll walk be - side you through the world to - day. While dream - ing  
I'll look in - to your  
eyes and flow - ers these year - day. I'll look in - to your  
eyes and hold your hand. I'll walk be - side you through the

Copyright MCMXXII by Chappell & Co., Ltd.

**Star Of God** Music by ERIC COATES

Words by FRED E. WEATHERLY  
Andante religioso

Piano

Lord of the by - gone cen - tur - ies, Thou dost still send a  
star that lead the fleet of woe - 'ring men To  
Beth - le - hem a - far, Lord of those wild and

Copyright MCMXXII by Chappell & Co., Ltd.

**In My Garden Of Auld Lang Syne**

Words by GEORGE GRAFF Music by JESSIE L. DEPPEN

Moderato

Piano

I don't have to trav - el far. Strange un - trod - den ways,  
I can find my Shang - hi - Lah. In my you - ter - days. For

Refrain (triple time)  
Men - 'ry day till all the same blas - ing thrills. In my

Copyright MCMXXII by Chappell & Co., Inc., N. Y. C.

**The Sun Would Shine Again** Music by WILBUR CHENOWETH

Words by ALICE GRAINGER  
Refrain

Piano

I know the sun would nev - er shine for me if  
you were ev - er far a - way. And I would lie - ten for your  
love. Though you should fail to an - swer me, I'd  
search the whole wide world for you, my dear

Copyright MCMXXII by Chappell & Co., Inc., N. Y. C.

**CHAPPELL**  
L. CO. INC.  
430 BUILDING  
ROCKEFELLER  
CENTER - N. Y. C.  
CHAPPELL  
MADE IN U. S. A. L. CO. - 172 - 1010 - 1010