

## Connecticut College Digital Commons @ Connecticut College

---

Historic Sheet Music Collection

Greer Music Library

---

1916

# My Melancholy Baby: Fox-trot Ballad with Ukulele Arrangement

Ernie Burnett

George A. Norton

Follow this and additional works at: <http://digitalcommons.conncoll.edu/sheetmusic>

---

### Recommended Citation

Burnett, Ernie and Norton, George A., "My Melancholy Baby: Fox-trot Ballad with Ukulele Arrangement" (1916). *Historic Sheet Music Collection*. Paper 476.

<http://digitalcommons.conncoll.edu/sheetmusic/476>

This Score is brought to you for free and open access by the Greer Music Library at Digital Commons @ Connecticut College. It has been accepted for inclusion in Historic Sheet Music Collection by an authorized administrator of Digital Commons @ Connecticut College. For more information, please contact [bpancier@conncoll.edu](mailto:bpancier@conncoll.edu).

The views expressed in this paper are solely those of the author.

# My Melancholy Baby

FOX-TROT BALLAD

With  
Ukulele Arrangement



*Words by*  
**GEO. A. NORTON**  
*Music by*  
**ERNIE BURNETT**



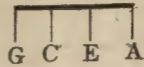
MARION WERTH

**JOE MORRIS MUSIC CO.**  
1587 BROADWAY NEW YORK

# Try This On Your Piano

## I'm Making Believe That I Don't Care.

Tune Ukulele



Lyric by  
AL DUBIN &  
WILLIE RASKIN

Uke arr. by Bob Neilson.

Music by  
ALEX MARR

**Chorus**  
*a tempo*

I'm mak - ing be - lieve that I don't care, Tho  
ev - 'ry one knows that I do, I'm try - ing to  
smile when all the while, My poor heart is cry - ing for

*a tempo* *mp-f*

Copyright 1927 by Joe Morris Music Co. 1587 B'way, N.Y.

The Publishers Reserve the right to the use of this Music or Melody for Mechanical Instruments.  
International Copyright Secured.

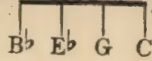
Albert & Sons, Australian Agents, Sydney.

For Sale By All Dealers

# My Melancholy Baby.

Words by  
GEO. A. NORTON

Tune Uke



Music by  
ERNIE BURNETT

Moderato

*Uke arr. by Bob Neilson*

Come sweetheart mine, Don't sit and pine, Tell me of the cares that make you  
Birds in the trees, Whis-per-ing breeze, Should not fail to lul you in to

feel so blue. What have I done? An-swer me Hon',  
peace-ful dreams. So tell me why Sad-ly you sigh,

Have I ev-er said an un-kind word to you? My love is true,  
Sit-ting at the win-dow where the pale moon beams, You shouldn't grieve,

Copyright MCMXI by Ernest M. Burnett.  
 Copyright transferred MCMXII to Theron C. Bennett.  
 Copyright transferred MCMXVI to Joe Morris Music Co. 1547 B'way, N.Y.  
 International Copyright Secured.

And just for you,  
Try and be - lieve,

I'd do al-most an - y - thing at  
Life is al-ways sun-shine when the

an - y time,  
heart beats true;

Dear, when you sigh  
Be of good cheer,

Or when you cry,  
Smile thro' your tears,

Something seems to grip this ve-ry heart of mine.  
When you're sad it makes me feel the same as you.

**Chorus**

Come to me, my mel-an-chol-y ba - by,  
Cud-dle up and don't be

*p-f*

blue;

All your fears are fool-ish fan-cy, may be,

You know, dear, that I'm in love with you. Ev'ry cloud must have a sil-ver

lin - ing, Wait un - til the sun shines through,

Smile my hon - ey dear, while I kiss a - way each tear, Or

else I shall be mel-an-cho-l-y too. Now won't you too.

# Try This On Your Piano

## DREAM RIVER

Uke arr. by  
Anthony J. Franchini

B $\flat$  Tuning  
F B $\flat$  D G

By  
GEORGE BROWN

**Chorus**

Drift-ing with you a - long Dream Riv - er,

*p-f*

Out where the moon beams soft - ly play As we count the

stars to - geth - er, All of my cares will fade a -

way Drift-ing with you a - long Dream Riv - er,

Copyright 1928 by Joe Morris Music Co. 1547 B'way, N.Y.  
The Publishers Reserve the right to the use of this Music or Melody for Mechanical Instruments.  
International Copyright Secured. All Rights Reserved. Albert & Sons, Australian Agents, Sydney.

For Sale By All Dealers