

2013

The Landscape of Hohenschönhausen, Berlin and Its Influence on Modernist Single-Family Housing

Edis Kekic

Connecticut College, edis.kekic@conncoll.edu

Follow this and additional works at: <http://digitalcommons.conncoll.edu/archstudintproj>

Recommended Citation

Kekic, Edis, "The Landscape of Hohenschönhausen, Berlin and Its Influence on Modernist Single-Family Housing" (2013).
Architectural Studies Integrative Projects. Paper 47.
<http://digitalcommons.conncoll.edu/archstudintproj/47>

This Article is brought to you for free and open access by the Art History and Architectural Studies at Digital Commons @ Connecticut College. It has been accepted for inclusion in Architectural Studies Integrative Projects by an authorized administrator of Digital Commons @ Connecticut College. For more information, please contact bpancier@conncoll.edu.

The views expressed in this paper are solely those of the author.

EDIS KEKIC

SENIOR INTEGRATIVE PROJECT:
INDEPENDENT STUDY, CISLA

ARCHITECTURAL STUDIES
CONNECTICUT COLLEGE
2013

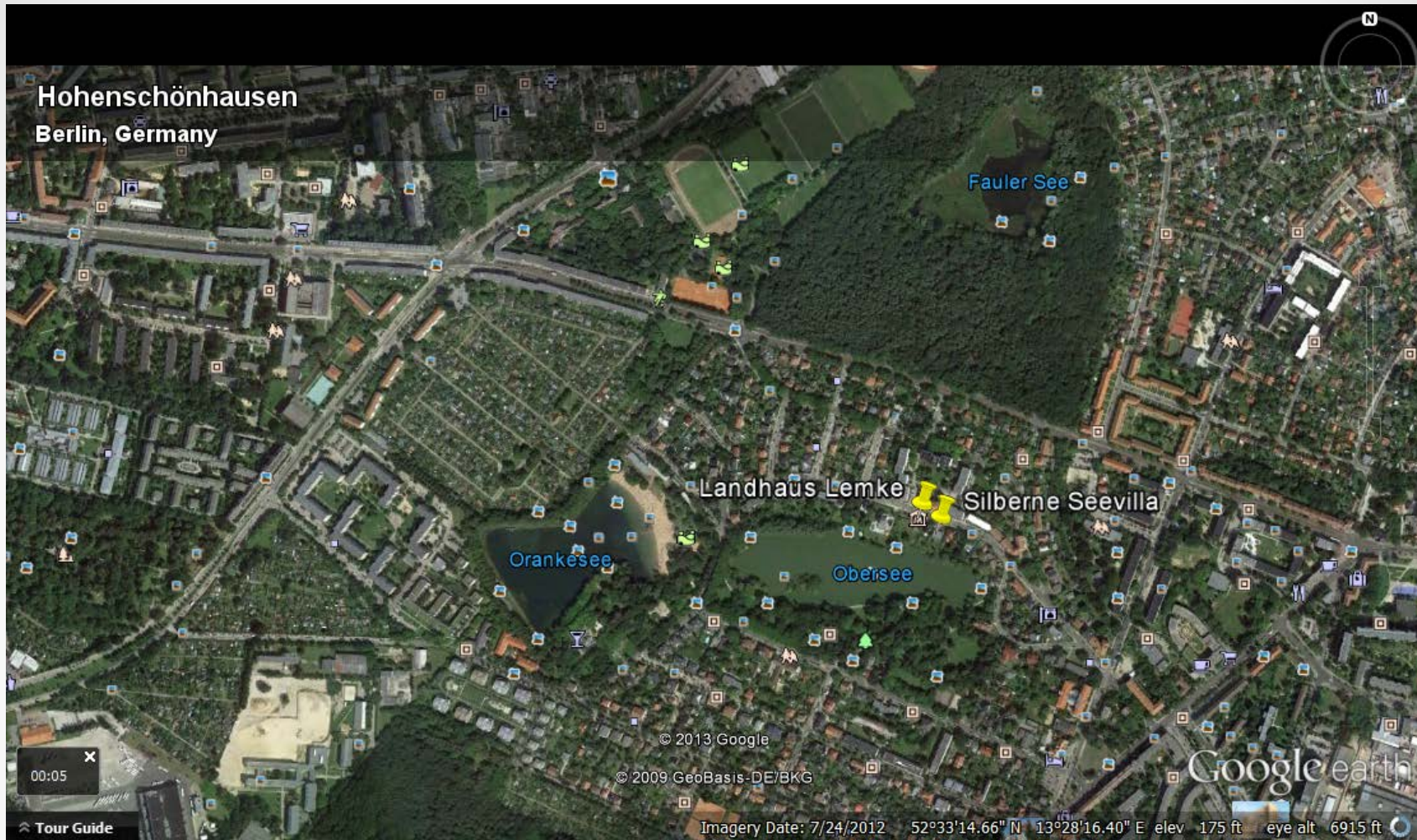


CONNECTICUT
COLLEGE

The Landscape of Hohenschönhausen, Berlin and Its Influence on Modernist Single-Family Housing



Edis Kekic

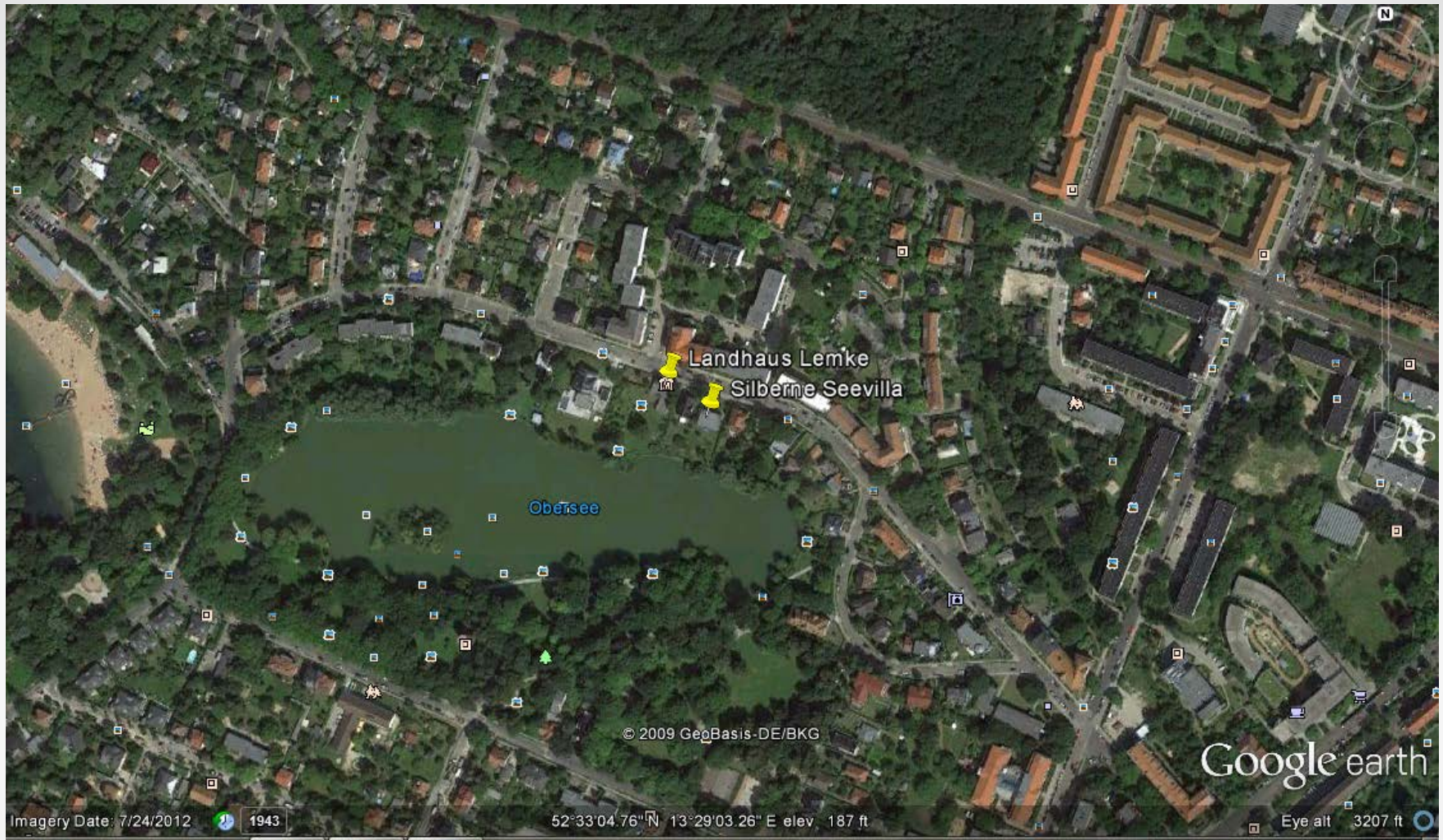


Hohenschönhausen district, Areal photo.

Berlin, Germany.

Source: "Hohenschönhausen, Berlin." Accessed April 5th, 2013.

Google Earth



Hohenschöhausen district, Obersee.

Berlin, Germany.

Source: "Hohenschöhausen, Berlin." Accessed March 10th, 2013.

Google Earth



Ludwig Mies van der Rohe, Photograph.

Chicago, Illinois, USA.

Source: "Redingote." Accessed April 13th, 2013.

<http://redingote.fr/lillustre/ludwig-mies-van-der-rohe/>



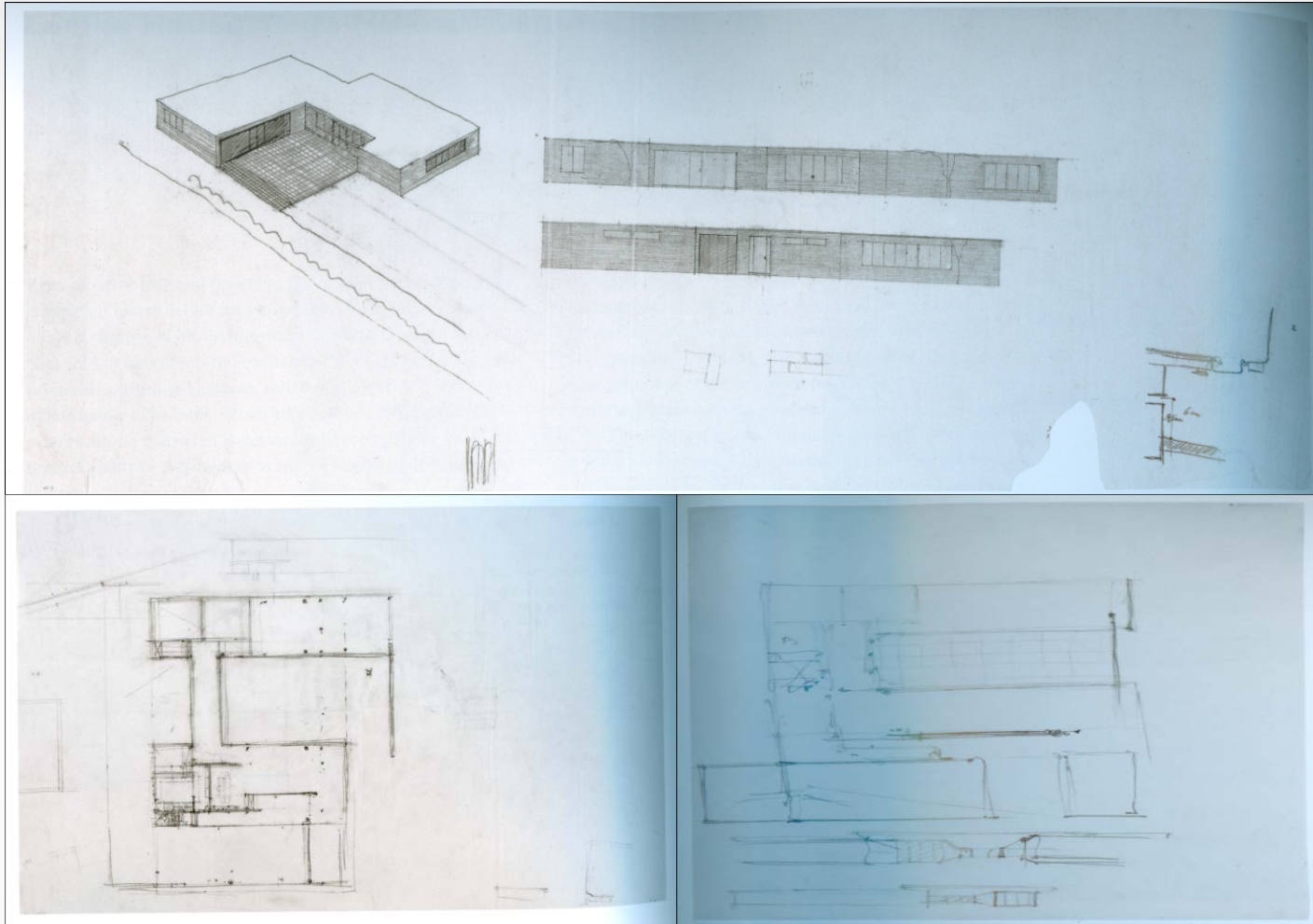
Landhaus Lemke, Exterior.

Ludwig Mies van der Rohe, Architect.

1932-1933. Hohenschöhausen, Berlin.

Source: "Bananasplit." Accessed April 13th, 2013.

<http://bananasplit.cgsociety.org/gallery/>



Landhaus Lemke, Sketches.

Ludwig Mies van der Rohe, Architect.

1932-1933. Hohenschöhausen, Berlin.

Source: Terence Riley, Barry Bergdoll, *Mies in Berlin* (New York: The Museum of Modern Art, New York, 2001), 272.



Landhaus Lemke, Furniture.

Ludwig Mies van der Rohe, Architect.

1932-1933. Hohenschöhausen, Berlin.

Source: Terence Riley, Barry Bergdoll, *Mies in Berlin* (New York: The Museum of Modern Art, New York, 2001), 272.

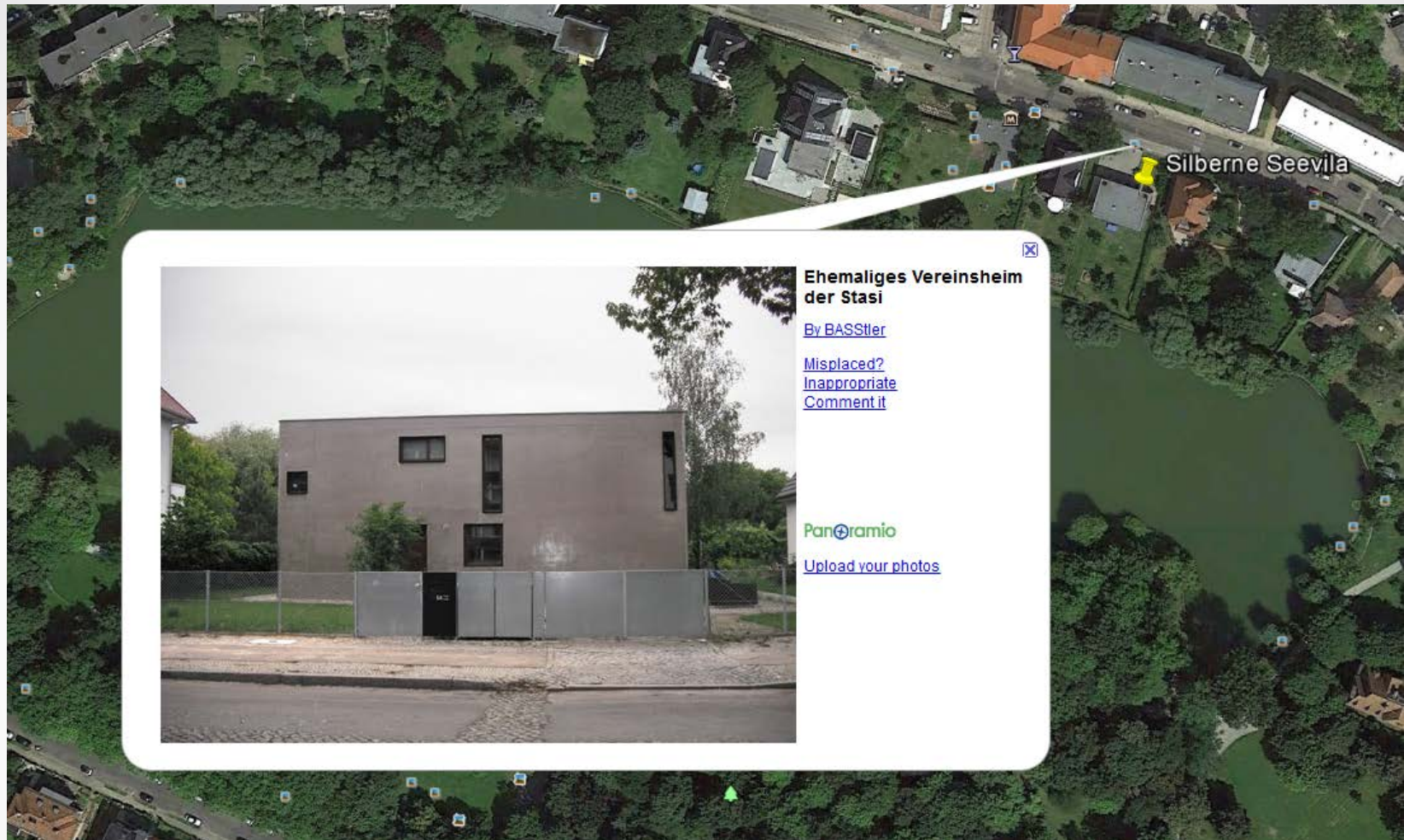


Hohenschöhausen prison/memorial, Exterior.

Hohenschöhausen, Berlin.

Source: "Berlin-info." Accessed April 13th, 2013.

<http://www.berlin-info.de/en/districts/hohenschoenhausen>



Silberne Seevilla, Exterior.
Barkow Leibinger, Architects.
2007. Hohenschöhausen, Berlin.

Source: "Hohenschöhausen, Berlin." Accessed March 10th, 2013.

Google Earth



Regine Leibinger and Frenk Barkow, Photograph.
Berlin, Germany.

Source: “Bz-Berlin.” Accessed April 13th, 2013.

<http://www.bz-berlin.de/kultur/kunst/berliner-kunst-fuer-marrakesch-article1399699-image2.html>



©Müller_2_06.tif



©Müller_2_07.tif



©Müller_2_08.tif



©Müller_2_12.tif



©Müller_2_13.tif



©Müller_2_14.tif

Silberne Seevilla, Exterior.
Leibinger Barkow, Architects.
2007.

Hohenschöhausen, Berlin.
Source: "Leibinger Barkow
Architects."

Accessed March 19th, 2013.



Schnitt A-A



Silberne Seevilla, Section.

Leibinger Barkow, Architects.

2007. Hohenschöhausen, Berlin.

Source: "Leibinger Barkow Architects." Accessed March 19th, 2013.



Silberne Seevilla, Floor plans.
 Leibinger Barkow, Architects.
 2007. Hohenschöhausen, Berlin.

Source: "Leibinger Barkow Architects." Accessed March 19th, 2013.



©Müller_1_07.tif



©Müller_1_08.tif



©Müller_1_09.tif



©Müller_1_10.tif



©Müller_1_11.tif



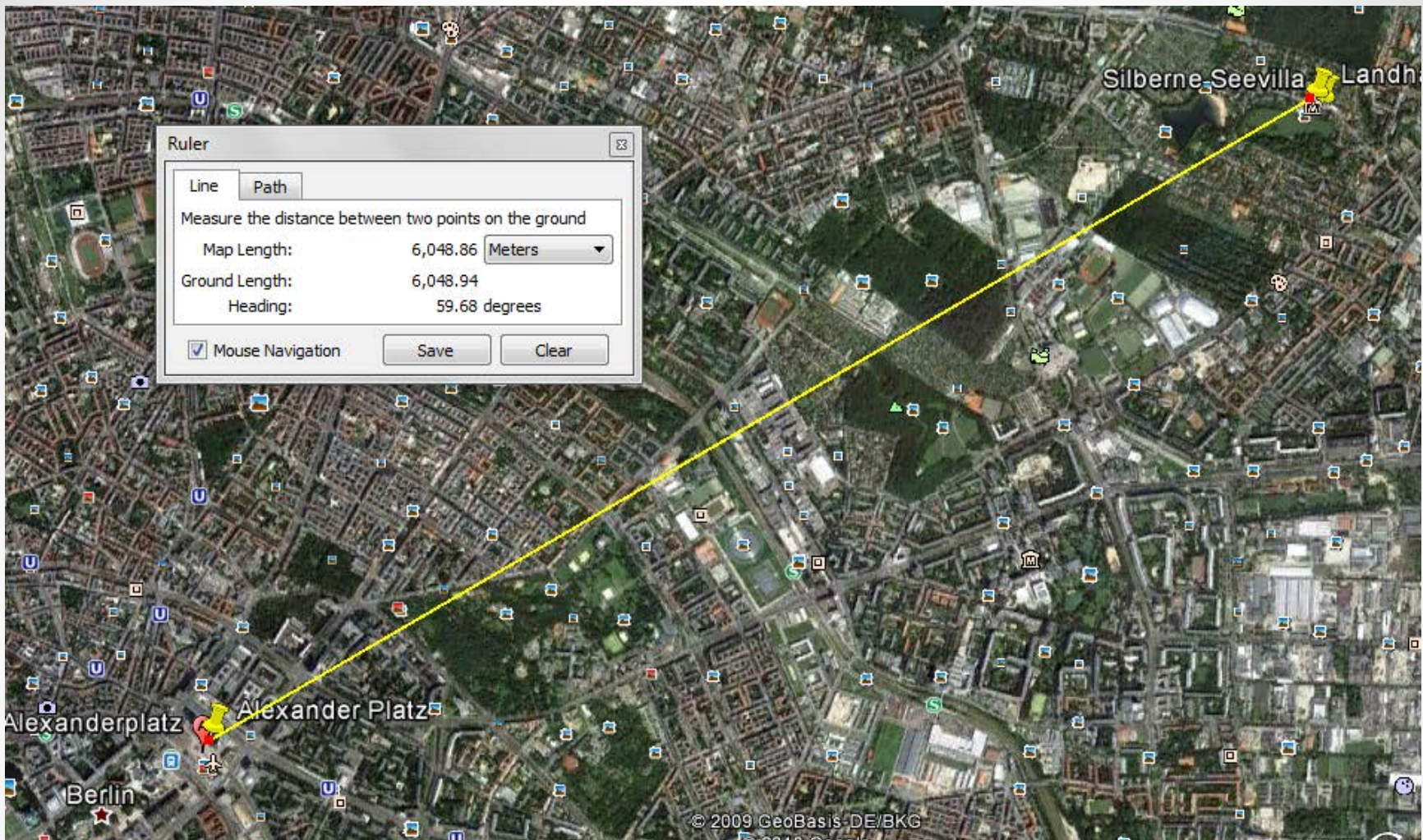
©Müller_1_12.tif

Silberne Seevilla, Interior and furniture.

Leibinger Barkow, Architects.
2007. Hohenschöhausen, Berlin.

Source: "Leibinger Barkow Architects."

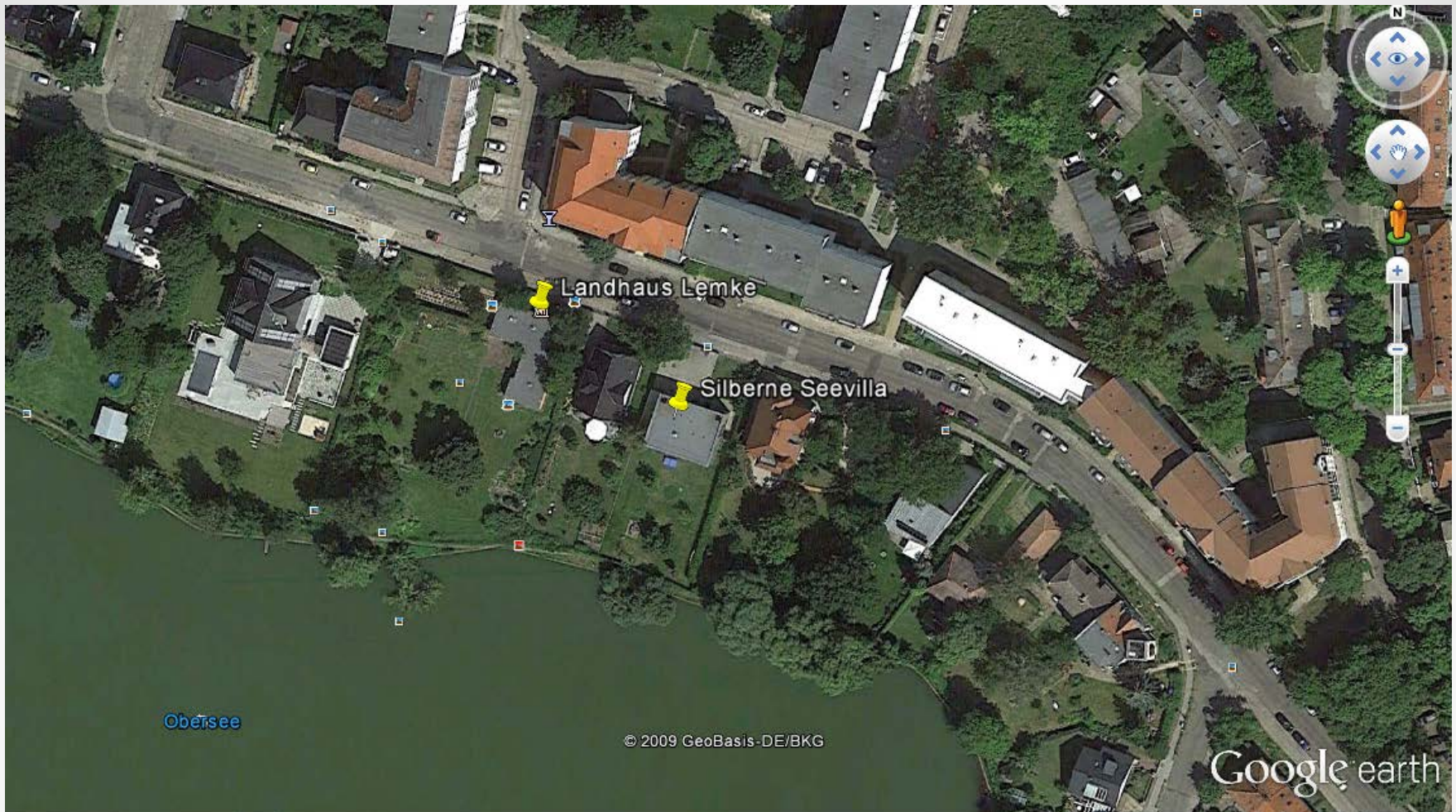
Accessed March 19th, 2013.



Hohenschöhausen district, Distance from the center of Berlin.
Berlin, Germany.

Source: "Hohenschöhausen, Berlin." Accessed March 10th, 2013.

Google Earth



Hohenschöhausen district, Landhaus Lemke and Silberne Seevilla.
Berlin, Germany.

Source: "Hohenschöhausen, Berlin." Accessed March 10th, 2013.

Google Earth

Sources

- Terence Riley, Barry Bergdoll. *Mies in Berlin*. The Museum of Modern Art. New York. New York, 2001.
- Thomas Drexel. *Neue Top 100 Haeuser – Zeitlos – Individuell – Preiswert*. Deutsche Verlags – Anstalt. Munich, 2008.
- Schulze, Franz. *Mies van der Rohe – A Critical Biography*. The University of Chicago Press. Chicago, Illinois, 1985.
- Zimmerman, Claire. *Mies van der Rohe – The Structure of Space*. Taschen GmbH. Cologne, Germany, 2006.
- Google Earth. Microsoft Windows (Version 7.0.3.8542) [Software].Mountain View, CA:Google Inc., 2013.
- “wuestenrot-serviceteam”, last modified January, 2013, <http://www.wuestenrot-serviceteam.de/Prospekt-H8.pdf>
- “Brown Alumni Magazine”, last modified August, 2006, <http://www.browنالumnimagazine.com/content/view/178/40/>
- Winstanley , Tim. "AD Classics: Landhaus Lemke / Mies van der Rohe", last modified August 8, 2011. ArchDaily. Accessed 23 Feb 2013. <http://www.archdaily.com/152464>
- Tegethoff, Wolf. *Mies van der Rohe – The Villas and Country Houses*. The MIT Press, Cambridge, Massachusetts, 1985.