

This is a repository copy of *Arrival by ambulance explains variation in mortality by time of admission : retrospective study of admissions to hospital following emergency department attendance in England*.

White Rose Research Online URL for this paper:
<https://eprints.whiterose.ac.uk/106493/>

Version: Published Version

Article:

Anselmi, Laura, Meacock, Rachel, Kristensen, Søren Rud et al. (2 more authors) (2016) *Arrival by ambulance explains variation in mortality by time of admission : retrospective study of admissions to hospital following emergency department attendance in England*. *BMJ Quality & Safety*. 005680. ISSN 2044-5423

<https://doi.org/10.1136/bmjqs-2016-005680>

Reuse

This article is distributed under the terms of the Creative Commons Attribution-NonCommercial (CC BY-NC) licence. This licence allows you to remix, tweak, and build upon this work non-commercially, and any new works must also acknowledge the authors and be non-commercial. You don't have to license any derivative works on the same terms. More information and the full terms of the licence here:
<https://creativecommons.org/licenses/>

Takedown

If you consider content in White Rose Research Online to be in breach of UK law, please notify us by emailing eprints@whiterose.ac.uk including the URL of the record and the reason for the withdrawal request.



OPEN ACCESS

Arrival by ambulance explains variation in mortality by time of admission: retrospective study of admissions to hospital following emergency department attendance in England

Laura Anselmi,¹ Rachel Meacock,¹ Søren Rud Kristensen,¹ Tim Doran,² Matt Sutton¹

► Additional material is published online only. To view please visit the journal online (<http://dx.doi.org/10.1136/bmjqs-2016-005680>)

¹Centre for Health Economics, University of Manchester, Manchester, UK

²Department of Health Sciences, University of York, York, UK

Correspondence to

Dr Laura Anselmi, Centre for Health Economics, University of Manchester, Jean McFarlane building, Oxford Road Manchester M13 9PL, UK; laura.anselmi@manchester.ac.uk

Received 12 May 2016

Revised 2 September 2016

Accepted 3 September 2016

ABSTRACT

Background Studies finding higher mortality rates for patients admitted to hospital at weekends rely on routine administrative data to adjust for risk of death, but these data may not adequately capture severity of illness. We examined how rates of patient arrival at accident and emergency (A&E) departments by ambulance—a marker of illness severity—were associated with in-hospital mortality by day and time of attendance.

Methods Retrospective observational study of 3 027 946 admissions to 140 non-specialist hospital trusts in England between April 2013 and February 2014. Patient admissions were linked with A&E records containing mode of arrival and date and time of attendance. We classified arrival times by day of the week and daytime (07:00 to 18:59) versus night (19:00 to 06:59 the following day). We examined the association with in-hospital mortality within 30 days using multivariate logistic regression.

Results Over the week, 20.9% of daytime arrivals were in the highest risk quintile compared with 18.5% for night arrivals. Daytime arrivals on Sundays contained the highest proportion of patients in the highest risk quintile at 21.6%. Proportions of admitted patients brought in by ambulance were substantially higher at night and higher on Saturday (61.1%) and Sunday (60.1%) daytimes compared with other daytimes in the week (57.0%). Without adjusting for arrival by ambulance, risk-adjusted mortality for patients arriving at night was higher than for daytime attendances on Wednesday (0.16 percentage points). Compared with

Wednesday daytime, risk-adjusted mortality was also higher on Thursday night (0.15 percentage points) and increased throughout the weekend from Saturday daytime (0.16 percentage points) to Sunday night (0.26 percentage points). After adjusting for arrival by ambulance, the raised mortality only reached statistical significance for patients arriving at A&E on Sunday daytime (0.17 percentage points).

Conclusion Using conventional risk-adjustment methods, there appears to be a higher risk of mortality following emergency admission to hospital at nights and at weekends. After accounting for mode of arrival at hospital, this pattern changes substantially, with no increased risk of mortality following admission at night or for any period of the weekend apart from Sunday daytime. This suggests that risk-adjustment based on inpatient administrative data does not adequately account for illness severity and that elevated mortality at weekends and at night reflects a higher proportion of more severely ill patients arriving by ambulance at these times.

BACKGROUND

It has been widely observed that death rates among patients admitted to hospital in an emergency vary across days of the week, with higher mortality rates experienced by patients admitted at weekends compared with midweek days.^{1–7} There is no conclusive evidence on the causes of this phenomenon, termed ‘the weekend effect’, and it has prompted much debate.^{8–11}

To cite: Anselmi L, Meacock R, Kristensen SR, et al. *BMJ Qual Saf* Published Online First: [please include Day Month Year] doi:10.1136/bmjqs-2016-005680

Concerns that the 'weekend effect' reflects inadequate quality of care on admission due to reduced staffing levels at weekends have prompted the National Health Service (NHS) in England to extend emergency hospital services at weekends in line with the government's commitment to providing uniform quality of care on each day of the week.^{12 13} Hospitals are required to implement new clinical standards for '7-day services', which include providing emergency admissions with a thorough clinical assessment by a suitable consultant within 14 hours of arrival and timely 24-hour access to consultant-directed interventions.

However, recent evidence aligns with the hypothesis that higher mortality following weekend admission reflects differences in the volume and severity of patients admitted at weekend.¹⁴⁻¹⁶ Concerns about the adequacy of administrative data to account fully for fluctuations in the severity of patients admitted to hospital at different times of the week have been raised,¹⁶⁻²⁰ suggesting that more accurate adjustment for severity of illness could explain the weekend effect.

The majority of studies identifying a weekend effect have relied on analyses of routinely collected inpatient administrative databases and have therefore adjusted for patient risk accounting for demographic characteristics, primary diagnosis and comorbidity measures based on reported International Classification of Diseases (ICD)-10 codes.¹⁷ While these risk-adjustment models exhibit high explanatory power in predicting mortality, they cannot account fully for severity of illness.^{17 18 21} Studies based on data from specialist clinical databases and audits for specific diseases or clinical departments have used richer risk-adjustment models that account for variations in severity of illness within a diagnostic and comorbidity group. These studies have found little or no significant difference in death rates by day of admission.^{16 19} However, these studies have focused on patients with specific conditions.

In this study, we use national administrative inpatient data merged with previously underused data on attendances at accident and emergency (A&E) departments. These contain information on whether the patient arrived by ambulance, an additional indicator of severity²² not available in the inpatient data. Despite ambulance services being available 24 hours each day of the week, the proportion of patients arriving by ambulance varies substantially across the week.²² We examine how the inclusion of information on arrival by ambulance in the risk-adjustment model affects the observed pattern of mortality across the week.

The attendance data also enable us to use information on the time of arrival at hospital in addition to the day of arrival. Studies have shown that patterns of outcomes differ throughout the whole week and

between day and night-times, and that either being admitted overnight or receiving care overnight tends to be associated with worse outcomes.^{7 14 23 24} This suggests that the description of the weekly variation in care quality as a weekend effect is an oversimplification.^{14 25} If fluctuations in staffing levels are the cause of the weekend effect, we would expect to see the patterns of patient mortality align with the typical shift patterns worked by senior medical staff.

METHODS

Data sources

We used patient-level data on all admissions to hospital and all attendances at A&E departments in England for the period 1 April 2013 to 28 March 2014 extracted from Hospital Episode Statistics.^{26 27}

The inpatient records contain information on date of admission, gender, age, ethnic group, primary and secondary diagnoses, and whether the patient was admitted via A&E.²⁸ We identified patients who had died in any hospital within 30 days of admission using the information on dates of death on discharge.²⁸ The A&E records contain information on individual attendances at A&E departments, including the time of arrival and whether the patient arrived by ambulance.²⁹

Linked admission and A&E attendance record identifiers were provided by the Health and Social Care Information Centre (HSCIC).³⁰ Admission records and attendance records were linked using a matching algorithm based on an encrypted person identifier, dates of discharge from A&E departments and dates of admission to hospital and a set of criteria to prioritise conflicting information from the two data sources.³⁰ In cases of multiple episodes within an admission spell, the first episode was used for linkage. In cases of multiple attendances at A&E on the same day, the last attendance was used. Socioeconomic deprivation, measured by the 2010 Index of Multiple Deprivation in the area of residence,³¹ was linked through patient Lower-level Super Output Area, provided in the data.²⁸

We restricted the sample to emergency admissions via A&E at 140 non-specialist acute hospitals in England, for which mortality indicators are routinely reported. The case-mixes of these hospitals are more comparable to each other than those of specialist hospitals.³² We included patients admitted to hospital between 1 April 2013 and 28 February 2014 to allow a 30-day follow-up period for all patients over which to analyse mortality. We excluded all but the first admission in cases of multiple admissions in the last 30 days of life.

Of the 3 427 133 admission records, 64 912 (1.9%) were excluded due to lack of complete information on the risk-adjustment variables. There was no matching A&E record for 334 275 admissions (9.9% of the total of 3 362 221 admissions with complete information on the risk adjusters used in the analysis) (see online

supplementary appendix figure A1). Patterns of mortality by day of the week were broadly similar in the included and excluded records (see online supplementary appendix table A2). We carried out the main analysis on 3 027 946 merged admission and A&E records with complete information on the risk adjusters.

Statistical analysis

We first constructed a standard risk-adjustment model estimating each patient's risk of mortality within 30 days using a logistic regression model that included the following variables taken from the inpatient records: the interaction between gender and age (in 5-year age bands), ethnicity, primary diagnosis (based on ICD-10 classification and defined according to Summary Hospital-level Mortality Indicator-grouped Clinical Classifications Software^{33 34}), a set of 30 binary indicators for comorbidities recorded in the secondary diagnosis fields (measured using Elixhauser conditions^{20 35 36}), source of admission (home or another hospital provider or institution), deprivation in the patient's area of residence (categorised in quintiles), admitting hospital and month of admission. We then categorised the predicted risk of mortality into five quintiles.

We examined how the predicted risk of mortality varied by time of arrival at A&E and by mode of arrival. To reflect senior doctors' working times,³⁷ we classified time of arrival at A&E into 14 twelve-hour periods by dividing the week into seven daytime periods (07:00 to 18:59) and seven night periods (19:00 to 06:59 the following day). We classified attendance at A&E in three categories defined according to arrival mode: by ambulance, by 'other' modes (non-ambulance) and unknown (patients with missing information that could potentially be included in both categories).²⁹ Ambulance arrivals include all forms of ambulance, but >98% are by emergency ambulance.²²

We then used logistic regression models to analyse differences in the probability of death within 30 days of admission across the 14 twelve-hour time of arrival periods, with Wednesday daytime as the reference category (model 1). We used the same risk-adjustment variables as in the main analysis.

We examined whether mortality was associated with the mode of arrival at A&E and whether this factor influenced the size of the estimated differences in mortality by day of the week and time of the day in two ways: first, by modifying the standard risk-adjustment model with the addition of arrival mode (model 2), and second, by carrying out the analysis stratified by arrival mode (ambulance vs non-ambulance; models 3 and 4). We did not carry out stratified analysis for patients with unknown mode of arrival at A&E due to the small size of this group (11 846 records, 0.39% of the total).

SEs were clustered at the individual level to account for repeated admissions of each individual patient. We used the C-statistic to discriminate across models.

Analyses were undertaken using Stata V.14, using a significance level of 5% throughout.

RESULTS

Association between crude risk of mortality and day and time of attendance

Of all 3 027 946 patients admitted to hospital following attendance at A&E, the majority (1 907 920, 63.0%) attended A&E during daytime, while the remaining 1 120 026 (37.0%) attended at night (table 1, column 1).

The crude mortality rates are higher for patients attending A&E during the day compared with at night (table 1, column 3); 3.66% of patients attending on Wednesday daytime die within 30 days compared with 3.48% of patients attending on Wednesday night-time. The crude mortality rates are highest for those attending on Sunday daytime (4.12%) and Saturday (4.00%) daytime, and lowest for those attending on Friday night (3.28%) and Saturday night (3.32%).

The higher crude mortality rates during daytime reflect the higher proportions of patients in the highest risk quintile (as measured using the standard risk-adjustment model) among those arriving during daytime compared with those arriving at night (figure 1). Over the whole week, 20.9% of daytime arrivals were in the highest risk quintile compared with 18.5% for night arrivals. Daytime arrivals on Sundays contained the highest proportion of patients in the highest risk quintile (21.59%), followed by daytime arrivals on Saturdays (21.38%) and Fridays (20.89%). The proportions of patients in the highest risk quintile among those arriving at night were similar across the days of the week, with the highest proportions on Mondays (18.97%) and Wednesdays (18.9%) and the lowest proportion on Saturdays (17.62%).

Association between risk of mortality and mode of arrival

The majority (1 863 246, 61.5%) of patients admitted to hospital after attendance at A&E were brought into hospital by ambulance (table 1, column 1). Patients admitted after being brought into A&E by ambulance were at a higher risk of death compared with those arriving by other modes (crude mortality rates 5.46% vs 0.78%, table 1, column 3). 27.4% of patients admitted to hospital following arrival at A&E by ambulance were in the highest risk quintile and 52.8% were in the two highest risk quintiles (figure 2). Only 8.1% of patients who were admitted after arriving at A&E by other means were in the highest risk quintile, while the majority were in the lowest risk quintile (31.9%) and over half of them (61.2%) were in the two lowest risk quintiles.

Association between day and time of attendance and mode of arrival

The proportion of admitted patients brought into A&E by ambulance was higher at night (average

Table 1 Association of day and time of attendance with risk-adjusted mortality within 30 days of admission

	Volume of admitted patients		Crude mortality rate (%)	Model 1 Standard risk adjustment		Model 2 Standard risk adjustment plus mode of arrival		Model 3 Standard risk adjustment (mode of arrival: ambulance)		Model 4 Standard risk adjustment (mode of arrival: non-ambulance)		
	Total	Arrived by ambulance		OR	95% CI	OR	95% CI	OR	95% CI	OR	95% CI	
Day and time												
Wednesday day	273 739	157 675	3.66	Ref.	–	Ref.	–	Ref.	–	Ref.	–	
Wednesday night	158 297	106 248	3.48	1.055	1.016 to 1.096	0.988	0.951 to 1.025	0.980	0.943 to 1.020	1.093	0.952 to 1.255	
Thursday day	277 620	160 146	3.75	1.028	0.996 to 1.060	1.027	0.996 to 1.060	1.030	0.997 to 1.065	1.015	0.920 to 1.121	
Thursday night	159 197	107 511	3.46	1.052	1.013 to 1.092	0.986	0.950 to 1.024	0.977	0.940 to 1.016	1.117	0.975 to 1.281	
Friday day	278 570	159 339	3.71	1.001	0.970 to 1.033	1.007	0.976 to 1.039	1.006	0.973 to 1.041	1.015	0.921 to 1.120	
Friday night	165 502	112 742	3.28	1.026	0.989 to 1.066	0.962	0.927 to 0.999	0.958	0.921 to 0.996	1.006	0.874 to 1.158	
Saturday day	251 464	153 602	4.00	1.058	1.025 to 1.092	1.031	0.999 to 1.064	1.028	0.995 to 1.063	1.097	0.988 to 1.219	
Saturday night	164 312	113 400	3.32	1.073	1.033 to 1.114	0.997	0.960 to 1.035	0.992	0.954 to 1.032	1.075	0.927 to 1.246	
Sunday day	256 531	154 123	4.12	1.089	1.056 to 1.124	1.061	1.028 to 1.095	1.055	1.020 to 1.090	1.186	1.070 to 1.314	
Sunday night	155 299	105 371	3.59	1.096	1.055 to 1.137	1.019	0.981 to 1.058	1.011	0.972 to 1.051	1.147	0.991 to 1.326	
Monday day	294 526	164 155	3.72	1.010	0.979 to 1.042	1.017	0.986 to 1.049	1.014	0.981 to 1.048	1.056	0.960 to 1.161	
Monday night	160 510	106 782	3.43	1.008	0.971 to 1.046	0.947	0.912 to 0.983	0.940	0.904 to 0.977	1.052	0.918 to 1.205	
Tuesday day	275 470	157 148	3.68	1.004	0.973 to 1.036	1.007	0.975 to 1.039	1.008	0.975 to 1.043	0.994	0.901 to 1.097	
Tuesday night	156 909	105 004	3.41	1.027	0.988 to 1.066	0.964	0.929 to 1.002	0.971	0.933 to 1.010	0.871	0.753 to 1.006	
Average	216 282	133 089	3.66									
Mode of arrival												
Ambulance	1 863 246		5.46			Ref.	–					
Non-ambulance	1 152 854		0.78			0.339	0.330 to 0.348					
Unknown	11 846		1.20			0.456	0.380 to 0.548					
N	3 027 946				3 027 946		3 027 946		1 863 246		1 152 854	
C-statistic					0.907		0.911		0.877		0.951	

Standard risk adjustment includes controls for age, gender, ethnicity, primary diagnosis, Elixhauser conditions, admission source, deprivation quintile, month and admitting hospital. Daytime defined as 07:00 to 18:59, night-time defined as 19:00 to 06:59 the following day. Marginal effects reported in online supplementary appendix table A3.

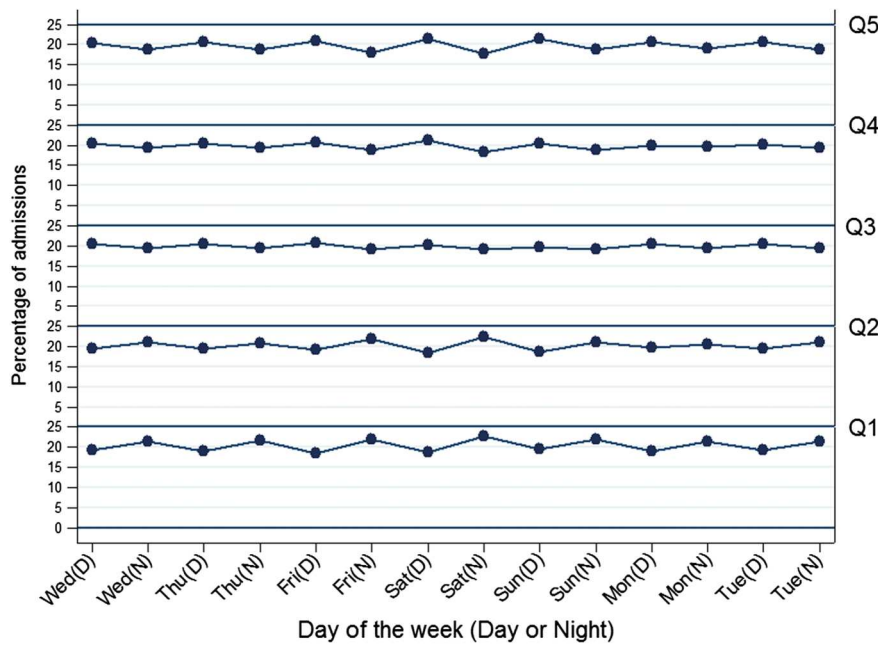


Figure 1 Percentage of admissions by quintile of mortality risk and day and time of attendance. Source data available in online supplementary appendix table A8.

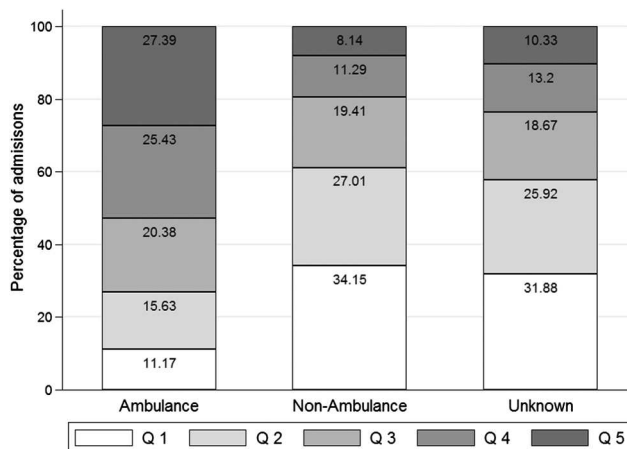


Figure 2 Percentage of admissions by quintile of mortality risk and mode of arrival. Source data available in online supplementary appendix table A9.

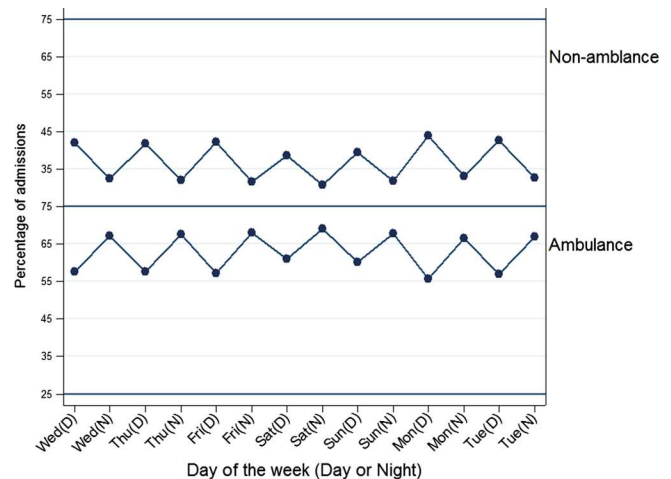


Figure 3 Percentage of admissions by mode of arrival and day and time of attendance. Source data available in online supplementary appendix table A10.

67.6%) compared with daytime (average 57.1%), with the highest proportions on Saturday night (69.0%) and Friday night (68.1%) and the lowest proportion on Monday night (66.5%) (figure 3). For daytimes, the proportion of admitted patients brought in by ambulance was substantially higher on Saturdays (61.1%) and Sundays (60.1%) compared with other days of the week (57.0% on average).

Association between risk-adjusted mortality and day and time of attendance

Using standard risk adjusters (excluding arrival mode; model 1: table 1, column 4), mortality rates were significantly higher, compared with Wednesday daytime,

for patients arriving at A&E during the week at night, on Wednesday (0.16 percentage points; OR 1.055, CI 1.016 to 1.096) and Thursday (0.15 percentage points; OR 1.052, CI 1.031 to 1.092). Risk-adjusted mortality rates increased through the weekend from Saturday daytime (0.16 percentage points; OR 1.058, CI 1.025 to 1.092) to Sunday night (0.26 percentage points; OR 1.096, CI 1.055 to 1.137).

Risk-adjusted mortality was substantially lower for patients arriving by non-ambulance modes (−2.4 percentage points; OR 0.339, CI 0.330 to 0.348) and unknown modes (−2.0 percentage points; OR 0.456, CI 0.380 to 0.548), compared with patients arriving

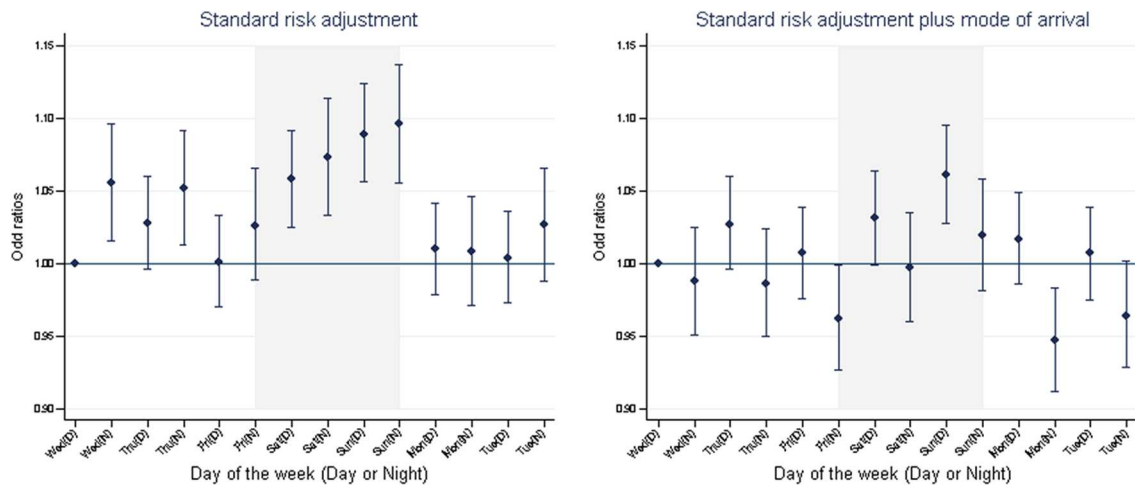


Figure 4 Risk-adjusted mortality within 30 days of admission by day and time of attendance. Source: ORs from model 1, [table 1](#), column 4 using standard risk adjustment and model 2, [table 1](#), column 6 using standard risk adjustment plus mode of arrival.

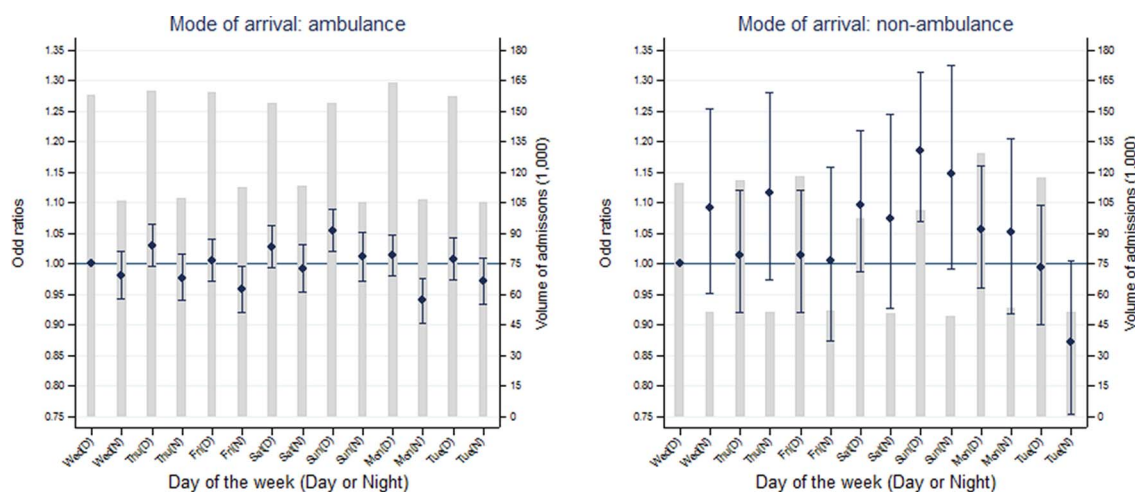


Figure 5 Risk-adjusted mortality within 30 days of admission by day and time of attendance by mode of arrival at accident and emergency.

by ambulance (model 2: [table 1](#), column 6). After controlling for arrival mode, Sunday daytime was the only time period associated with a higher mortality risk (0.17 percentage points; OR 1.061, CI 1.028 to 1.095) compared with Wednesday daytime.

The patterns of mortality among patients arriving by ambulance (model 3: [table 1](#), column 8) were similar to those for all patients after adjusting for arrival mode. Mortality was only significantly higher for patients arriving on Sunday daytime, both among patients arriving by ambulance (0.23 percentage points; OR 1.055, CI 1.020 to 1.090) and among patients arriving by non-ambulance modes (0.11 percentage points; OR 1.186, CI 1.070 to 1.314, model 4: [table 1](#), column 10).

[Figure 4](#) shows how the estimated effects of time and day of arrival at A&E on mortality change after including mode of arrival in the risk-adjustment models. The trend towards increased risk of mortality for night-time admission is reversed, with lower

mortality for patients arriving overnight from Monday to Saturday. [Figure 5](#) shows that the same pattern is observed among patients arriving by ambulance. There is more variation in mortality among patients arriving by non-ambulance modes but only Sunday daytime differs significantly from Wednesday daytime.

DISCUSSION

Principal findings

We analysed the association between risk-adjusted mortality and day and time of arrival for patients admitted to hospital after attendance at A&E. When controlling only for the risk adjusters available in inpatient administrative records as in previous studies,¹⁻⁷ mortality was found to be significantly higher for patients admitted to hospital throughout the weekend and on Wednesday and Thursday nights. Patients arriving at A&E by ambulance had a higher risk of mortality and higher proportions of patients

admitted overnight and at weekends arrived by ambulance.

Accounting for mode of arrival substantially altered the observed pattern of mortality throughout the week. Only patients admitted via A&E on Sunday daytime had an increased risk of mortality compared with patients admitted on Wednesday daytime, and patients admitted on Monday and Friday nights had significantly lower risk. None of the night-time periods were associated with higher risk of mortality.

Strengths and weaknesses

We made innovative use of information on mode of arrival to account for severity of illness in patients admitted to hospital in an emergency. We investigated the hypothesis that the differences in mortality throughout the week observed in previous studies using national administrative records are explained by previously unmeasured differences in severity of illness.^{17 18 21}

This study focuses only on patients admitted in an emergency after attending A&E, who represent 80% of all emergency admissions and 89% of weekend emergency admissions.¹⁵ However, since this group experiences a different profile of mortality rates than patients admitted directly to hospital,¹⁵ we cannot test whether our results generalise to all inpatient admissions.

A&E records are known to be less complete and accurate than inpatient records.³⁸ We relied mainly on the better quality data extracted from inpatient records and only used information on arrival time and mode of arrival from the A&E record. No specific concerns about these variables have been raised by the HSCIC in their audits of the quality of A&E records. Although any variation in accuracy of recording by time and day could bias our results, we examined the patterns of mortality by day of the week for complete versus incomplete A&E records and found them to be broadly similar, suggesting that the incompleteness of records is unlikely to have biased our analysis (see online supplementary appendix table A2).

We were restricted by data availability to deaths that occur in hospital and could not examine out-of-hospital deaths. However, >80% of all deaths within 30 days of an emergency admission occur in hospital and the proportion is higher at weekends, leading to a small bias towards finding a weekend effect.¹⁵

We used the time of attendance at A&E rather than the time of admission to hospital as our index time. We argue that the time of attendance is more appropriate since this is the point at which hospitals become responsible for patient care. Nonetheless, for comparability with previous studies, we repeated our analysis using the time of departure from A&E to approximate the time of admission to hospital. The

basic patterns of mortality across the week were unaffected (see online supplementary appendix table A4).

We used a classification of daytime versus night-time that was consistent with senior doctors' working hours.²³ We checked that our results were robust to using an alternative definition of daytime and night-time (08:00 to 19:59 and 20:00 to 07:59 the following day), as has been used in a previous study.²⁴ The changes to the point estimates of the ORs for our main analysis (full risk adjustment including mode of admission) were small and the OR for Sunday daytime remained the largest (see online supplementary appendix table A5).

Comparison with previous studies

Previous studies using national administrative data have consistently found mortality to be elevated for patients admitted to hospital at the weekend compared with their counterparts admitted during the week.¹⁻⁷ However, these studies suffer from two major limitations. First, they have been constrained by the absence of information on patients' time of arrival at hospital and have been forced to classify the weekend crudely by dates as 00:00 Saturday to 23:59 Sunday.^{1-4 6} Second, these studies have been limited in how they could adjust for severity of illness.

To allow comparison of our results with previous studies using only inpatient data,^{1-4 6 15} we carried out the same analysis to test how the addition of arrival mode would change the association between mortality and day of admission to hospital or admission at weekend. Day of admission was defined as 00:00 to 23:59 based on information in inpatient records. The results obtained using standard risk adjusters were similar to previous studies¹⁵ and inclusion of arrival mode reduced the elevation of mortality at weekends (from OR 1.046, CI 1.031 to 1.061, to OR 1.024, CI 1.008 to 1.039) (see online supplementary appendix tables A6 and A7).

Including arrival mode in the risk-adjustment model accounted for most of the differences in mortality between different days and different times, leaving Sunday daytime as the only period associated with a higher risk of death. These findings were replicated when we stratified the analysis by mode of arrival. Our results are in line with previous studies that have used clinical audit data and concluded that the elevation of mortality at weekends disappears once indicators of severity are controlled for.^{14 16} In contrast to these studies, however, we analysed a large national data set and considered all clinical causes of admissions. Nonetheless, arrival by ambulance is an imperfect proxy for severity of illness. It is likely that there are further unmeasured aspects of severity related to the risk of mortality that differ between patients admitted at different times of the week.

Implications and future research

Current extensions of emergency hospital services at weekends in the NHS in England are only likely to be successful in addressing the weekend effect if it is caused by reduced availability of hospital services on the day of admission. By accounting for patient arrival at hospital by ambulance, we have shown that much of the weekend effect identified in previous studies is likely to be explained by variations in severity of illness. With the exception of Sunday daytime, elevated mortality among admissions at weekends reflects a higher proportion of patients arriving by ambulance.

Most of the debate on 7-day services has focused on weekend care. Our results suggest that a more granular approach to time classification is needed to fully capture the variations in the flow of patients and the services offered across times of the day in addition to days of the week.

In addition to the patient's mode of arrival at hospital, other information on the services that patients have accessed prior to their arrival at hospital should be included in future studies to further understand mortality risk. Such proxies will, however, always be inferior to direct measurement of illness severity, which is required in order for clinicians and policy-makers to make valid comparisons of outcomes over time and across providers. Our results therefore add to the increasing body of evidence highlighting the limitations of the risk adjusters available in inpatient records when standardised mortality rates are interpreted as an indicator of hospital quality.³⁹

When assessing quality of care, there are many important aspects beyond mortality; the vast majority of patients admitted to hospital do not die. The time taken to receive necessary scans and procedures has been shown to vary throughout the week in condition-specific studies using clinical audit data.^{14 40 41} Temporal variations in quality indicators beyond mortality warrant further investigation.

Twitter Follow Rachel Meacock at @RachelMeacock, Søren Rud Kristensen at @soerenrk, Matt Sutton at @MattXSutton, Tim Doran at @narodmit

Acknowledgements The paper benefited substantially from the valuable comments and suggestions received from the editors and from two anonymous reviewers. Linked A&E and inpatient records were provided by the Health and Social Care Information Centre (now NHS Digital). In particular, Ariane Alamdari from the Data Access Request Service provided access to the electronic files and support in using them.

Contributors LA and MS designed the paper. LA, SRK and MS extracted the data and LA performed the analysis. LA and MS wrote the manuscript. RM, SRK and TD edited the manuscript. LA is the guarantor of this article.

Funding This research was funded by the National Institute for Health Research Health Services and Delivery Research (NIHR HS&DR) programme (project number 12/128/48).

Disclaimer The views and opinions expressed are those of the authors and do not necessarily reflect those of the HS&DR programme, NIHR, NHS or the Department of Health.

Competing interests None declared.

Provenance and peer review Not commissioned; externally peer reviewed.

Open Access This is an Open Access article distributed in accordance with the Creative Commons Attribution Non Commercial (CC BY-NC 4.0) license, which permits others to distribute, remix, adapt, build upon this work non-commercially, and license their derivative works on different terms, provided the original work is properly cited and the use is non-commercial. See: <http://creativecommons.org/licenses/by-nc/4.0/>

REFERENCES

- 1 Freemantle N, Richardson M, Wood J, *et al*. Weekend hospitalization and additional risk of death: An analysis of inpatient data. *J R Soc Med* 2012;105:74–84.
- 2 Aylin P, Yunus A, Bottle A, *et al*. Weekend mortality for emergency admissions. A large, multicentre study. *Qual Saf Health Care* 2010;19:213–17.
- 3 Ruiz M, Bottle A, Aylin PP. The Global Comparators project: international comparison of 30-day in-hospital mortality by day of the week. *BMJ Qual Saf* 2015;24:492–504.
- 4 Roberts SE, Thorne K, Akbari A, *et al*. Weekend emergency admissions and mortality in England and Wales. *Lancet* 2015;344:e67.
- 5 Bell CM, Redelmeier DA. Mortality among patients admitted to hospitals on weekends as compared with weekdays. *N Engl J Med* 2001;345:663–8.
- 6 Freemantle N, Ray D, McNulty D, *et al*. Increased mortality associated with weekend hospital admission: a case for expanded seven day services? *BMJ* 2015;351:h4596.
- 7 Vest-Hansen B, Riis AH, Sørensen HT, *et al*. Out-of-hours and weekend admissions to Danish medical departments: admission rates and 30-day mortality for 20 common medical conditions. *BMJ Open* 2015;5:e006731
- 8 Meacock R, Doran T, Sutton M. What are the costs and benefits of providing comprehensive seven-day services for emergency hospital admissions? *Health Economics* 2015;24:907–12.
- 9 McKee M. Is the UK government right that seven day working in hospitals would save 6000 lives a year? *BMJ* 2015;351:h4723.
- 10 Godlee F. What to do about the “weekend effect”. *BMJ* 2015;351:h4840.
- 11 McCartney M. The zombie statistic behind the push for seven day working. *BMJ* 2015;351:h3575.
- 12 NHS England NHS Services, Seven Days a, Week Forum: Summary of Initial Findings. 2013.
- 13 Department of Health. 7-day NHS services: a factsheet. In: Health Do, ed. *7-day NHS service*. London, 2015.
- 14 Bray BD, Cloud GC, James MA, *et al*. Weekly variation in health-care quality by day and time of admission: a nationwide, registry-based, prospective cohort study of acute stroke care. *Lancet* 2016;388:170–7.
- 15 Meacock R, Anselmi L, Kristensen SR, *et al*. Higher mortality rates amongst emergency patients admitted to hospital at weekends reflect a lower probability of admission. *J Health Serv Res Policy* 2016;
- 16 Mohammed MA, Faisal M, Richardson D, *et al*. Adjusting for illness severity shows there is no difference in patient mortality at weekends or weekdays for emergency medical admissions. *QJM* 2016.

- 17 Perez Concha O, Gallego B, Hillman K, *et al.* Do variations in hospital mortality patterns after weekend admission reflect reduced quality of care or different patient cohorts? A population-based study. *BMJ Qual Saf* 2014;23:215–22.
- 18 Black N. Is hospital mortality higher at weekends? If so, why? *Lancet* 2016;338:108–11.
- 19 Li L, Rothwell PM. Biases in detection of apparent “weekend effect” on outcome with administrative coding data: population based study of stroke. *BMJ* 2016;i2648.
- 20 Bottle A, Gaudoin R, Goudie R, *et al.* Can valid and practical risk-prediction or casemix adjustment models, including adjustment for comorbidity, be generated from English hospital administrative data (Hospital Episode Statistics)? A national observational study. *Health Serv Deliv Res* 2014;2.
- 21 Lilford R, Mohammed MA, Spiegelhalter D, *et al.* Use and misuse of process and outcome data in managing performance of acute medical care: avoiding institutional stigma. *Lancet* 2004;363:1147–54.
- 22 Health and Social Care Information Centre. *Hospital Episode Statistics, Accident and Emergency (A&E), England 2013–2014*. Summary report, 2015.
- 23 Turner M, Barber M, Dodds H, *et al.* Stroke patients admitted within normal working hours are more likely to achieve process standards and to have better outcomes. *Neurol Neurosurg Psychiatry* 2016;87:138–43.
- 24 Robinson EJ, Smith GB, Power GS, *et al.* Risk-adjusted survival for adults following in-hospital cardiac arrest by day of week and time of day: observational cohort study. *BMJ Qual Saf* 2015; Published Online First: 11 December 2015.
- 25 Stewart K, Bray B, Buckingham R, *et al.* Variations in care quality occur across the whole week, not just at weekends. *BMJ* 2016;353:i3151.
- 26 Health and Social Care Information Centre. *Hospital Episode Statistics, Accident and Emergency (A&E), England 2013–2014, 2015*.
- 27 Health and Social Care Information Centre. *Hospital Episode Statistics, Admitted Patient Care, England—2013-14, 2015*.
- 28 Health and Social Care Information Centre. *HES Data Dictionary: Admitted Patient Care (APC) Hospital Episode Statistics (HES) Data Dictionary*. Leeds: Health and Social Care Information Centre, 2016.
- 29 Health and Social Care information Centre H. *HES Data Dictionary: Accident and Emergency—Accident and Emergency (A&E) Hospital Episodes Statistics (HES) Data Dictionary*. Published Online First: 22 September 2015 2015.
- 30 Health and Social Care Information Centre. *HES Accident & Emergency (A&E) to Admitted Patient Care (APC) Linkage Methodology*, 2011.
- 31 Department for Communities and Local Government. *English indices of deprivation 2010*. Publications—GOV.UK, 2011.
- 32 Health and Social Care Information Centre. *Summary Hospital-level Mortality Indicator (SHMI)—Frequently Asked Questions (FAQs)*, 2015.
- 33 HCPU-US. *HCUP-US Tools & Software Page for Classifications Software (CCS) for Mortality Reporting In: (HCUP) HCUP*, editor, 2009.
- 34 Health and Social Care Information Centre H. *Summary Hospital-level Mortality Indicator (SHMI)—Frequently Asked Questions (FAQs)*. 2015.
- 35 Quan H, Sundararajan V, Halfon P, *et al.* Coding algorithms for defining comorbidities in ICD-9-CM and ICD-10 administrative data. *Med Care* 2005;43:1130–9.
- 36 Gutacker N, Bloor K, Cookson R. Comparing the performance of the Charlson/Deyo and Elixhauser comorbidity measures across five European countries and three conditions. *Eur J Public Health* 2015;25(Suppl 1):15–20.
- 37 Bland D. *BMA Survey of Consultant Working Patterns and on Call Services*. London: British Medical Association, 2014.
- 38 HES Data Quality Team. *HES 2013–2014 Annual A&E Data quality note (Version 2)*. In: Centre HaSCI, editor, 2015.
- 39 Doran T, Bloor K, Maynard A. The death of death rates? *BMJ* 2015;351:h3466.
- 40 Hogan H, Zipfel R, Neuburger J, *et al.* Avoidability of hospital deaths and association with hospital-wide mortality ratios: retrospective case record review and regression analysis. *BMJ* 2015351:h3239.
- 41 Mohammed MA, Deeks JJ, Girling A, *et al.* Evidence of methodological bias in hospital standardised mortality ratios: retrospective database study of English hospitals. *BMJ* 2009;338:b780.

Arrival by ambulance explains variation in mortality by time of admission: retrospective study of admissions to hospital following emergency department attendance in England

Laura Anselmi, Rachel Meacock, Søren Rud Kristensen, Tim Doran and Matt Sutton

BMJ Qual Saf published online October 18, 2016

Updated information and services can be found at:

<http://qualitysafety.bmj.com/content/early/2016/10/17/bmjqs-2016-005680>

These include:

References

This article cites 22 articles, 15 of which you can access for free at: <http://qualitysafety.bmj.com/content/early/2016/10/17/bmjqs-2016-005680#BIBL>

Open Access

This is an Open Access article distributed in accordance with the Creative Commons Attribution Non Commercial (CC BY-NC 4.0) license, which permits others to distribute, remix, adapt, build upon this work non-commercially, and license their derivative works on different terms, provided the original work is properly cited and the use is non-commercial. See: <http://creativecommons.org/licenses/by-nc/4.0/>

Email alerting service

Receive free email alerts when new articles cite this article. Sign up in the box at the top right corner of the online article.

Topic Collections

Articles on similar topics can be found in the following collections

[Open access](#) (256)

Notes

To request permissions go to:

<http://group.bmj.com/group/rights-licensing/permissions>

To order reprints go to:

<http://journals.bmj.com/cgi/reprintform>

To subscribe to BMJ go to:

<http://group.bmj.com/subscribe/>