



Cite this: DOI: 10.1039/c6dt03041f

Geometric isomerism in coordination cages based on tris-chelate vertices: a tool to control both assembly and host/guest chemistry

Alexander J. Metherell and Michael D. Ward*

This 'Perspective' article summarises recent work from the authors' research group on the exploitation of the simple *fac/mer* geometric isomerism of octahedral metal tris-chelates as a tool to control the chemistry of coordination cages based on bis(pyrazolyl-pyridine) ligands, in two different respects. Firstly this geometric isomerism plays a major role in controlling the guest binding properties of cages because a *fac* tris-chelate arrangement of pyrazolyl-pyridine chelates around a metal ion vertex results in formation of a convergent set of inwardly-directed C–H protons in a region of high positive electrostatic potential close to a metal cation. This collection of δ^+ protons therefore provides a charge-assisted hydrogen-bond donor site, which interacts with the electron-rich regions of guest molecules that are of the correct size and shape to occupy the cage cavity, and the strength of this hydrogen-bonding interaction plays a major role in guest recognition in non-aqueous solvents. Secondly the ability to prepare mononuclear complexes with either a *fac* or *mer* arrangement of ligands provides an entry into the controlled, stepwise assembly of heterometallic cages based on a combination of kinetically inert and kinetically labile metal ions at different sites. This has allowed introduction of useful physical properties such as redox activity or luminescence, commonly associated with inert metal ions which are not amenable to participation in thermodynamic self-assembly processes, to be incorporated in a predictable way into the superstructures of coordination cages at specific sites.

Received 1st August 2016,
Accepted 31st August 2016

DOI: 10.1039/c6dt03041f

www.rsc.org/dalton

Introduction

From its humble beginning with Pedersen's discovery of the first crown ether in 1960,¹ the domain of supramolecular chemistry is one that has grown in many directions, with chemists' ability to manipulate non-covalent interactions underpinning developments in research fields from synthetic biology to materials science. Within the domain of coordination chemistry, an area of particular interest over the last three decades has been the development of coordination cages: hollow, pseudo-spherical metal/ligand assemblies of sometimes remarkable complexity which are formed from simple metal ion and bridging ligand building blocks.² These are of interest for both their structural and functional properties. Coordination cages provide some of the most elaborate structures that can be formed from simple building blocks by self-assembly methods: so the study of their assembly and the principles of symmetry which underpin this, and their structural characterisation, have been of long-standing interest. Functional behaviour can arise from binding guests in the central cavity, with the entrapment

of guests in the microenvironment inside a cage cavity resulting in useful behaviour from highly effective catalysis of reactions of bound guests, to sensing and drug delivery.³

The majority of coordination cages are homonuclear, homoleptic assemblies: that is, they contain one type of labile metal ion and one type of bridging ligand, with the structure dictated by the coordination preferences of the metal ion, and the disposition of donor sites in the ligand and its geometric flexibility.² This naturally limits both the structural control available during the self-assembly process and, potentially, the functional properties of the resulting cage. Many potentially useful properties of transition metal ions that may be exploited to confer useful properties on a cage – in particular, reversible redox activity and photophysical activity – are associated with second and third row metal ions whose kinetic inertness makes them difficult to use in traditional self-assembly processes, with a few notable exceptions.⁴ The majority of coordination cages reported thus far are only 'functional' due to the structural attributes of the cage (size, shape, guest binding abilities and so on), with the exact nature of the metal ion being of little importance other than to direct the assembly of the ligands and support the overall cage structure.

As part of our exploration of coordination cage chemistry we have been interested in developing new routes to hetero-

Department of Chemistry, University of Sheffield, Sheffield S3 7HF, UK.
E-mail: m.d.ward@sheffield.ac.uk



metallic cages, with a view to exploiting the different types of property associated with different metal ions to provide new forms of functional behaviour to cages. This synthetic control has relied on being able to treat different vertices of the cages in a different way during a stepwise assembly process as a consequence of their *fac* ('facial') or *mer* ('meridional') geometric isomerism. When an octahedrally-coordinated metal ion has three ligands of each of two different types – *i.e.* an MA₃B₃ complex – this can lead to two geometric isomers. The *fac* isomer arises when the three A ligands lie on one triangular face of the octahedron and the three B ligands are on the other, such that every ligand A is *trans* to a ligand B and there is a threefold rotation axis. The *mer* isomer arises when the three A ligands and the three B ligands are each disposed around an 'equator' such that one axis has two ligands A *trans* to one another; another has two ligands B *trans* to one another; and the third has one each of A and B *trans* to one another. This has no threefold rotation axis. These are sketched in Fig. 1 for the cases when A and B are monodentate ligands, as well as the case (in this work) when chelating bidentate ligands A–B are used.

This variation in the arrangement of donor atoms around otherwise similar metal tris-chelate vertices allows them to be differentiated between, and therefore provides an entry into a general stepwise assembly methodology. In addition, we have found that the occurrence of either or both of *fac* and *mer* tris-chelate vertices in the cages has an unexpectedly profound effect on the cages' host guest chemistry.

In this review we describe how this simple variation in geometric isomerism between otherwise similar metal centres in

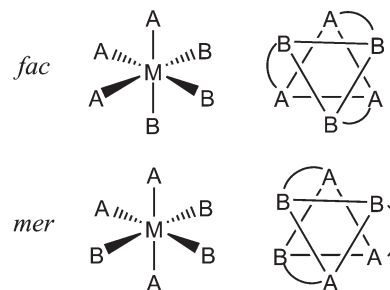


Fig. 1 Top: Arrangement of the two ligand types in *fac*-MA₃B₃ complexes. Bottom: Arrangement of the two ligand types in *mer*-MA₃B₃ complexes. The sketches on the right are alternative depictions of the same species viewed through the centre of an octahedral face, with chelate links in the A–B ligands also included.

the cages underpins both the control of heteronuclear cage assembly, and the ability of some of the cages to act as hosts for both anionic and neutral guests.

Background: occurrence of geometric *fac/mer* isomerism in coordination cages

Our research into coordination cage chemistry has centred mostly on the use of bis-bidentate ligands which consist of two chelating pyrazolyl-pyridine termini connected to a central aromatic spacer *via* flexible methylene hinges (Fig. 2).^{2c}

Combination of these ligands, which possess four donor atoms, with kinetically labile octahedral transition metal



Alexander J. Metherell

Alex Metherell was born in Bristol and grew up in Maidenhead. After graduating from the University of Sheffield with an MChem in 2011, he remained in Sheffield to study for a PhD (2014) under the supervision of Prof. Michael Ward. Alex is currently undertaking postdoctoral studies within the same group, and his research so far has been based on the synthesis of heterometallic coordination cages and

their subsequent applications in host–guest chemistry. In his spare time, Alex enjoys taking walks around the Peak District.



Michael D. Ward

Mike Ward did his BA at Cambridge, studying Natural Sciences (1983–1986). He remained in Cambridge for his PhD (1986–1989) with Ed Constable, studying some early examples of self-assembled helicate complexes. After a post-doc with Jean-Pierre Sauvage in Strasbourg, he was appointed to a lectureship at Bristol in 1990. He moved to Sheffield in 2003 and is currently the Head of Department. Mike's interests are

all based around the coordination chemistry of transition metal and lanthanide ions and their multinuclear assemblies. Awards for his research include the RSC Corday Morgan medal for 1999; Sir Edward Frankland Fellowship for 2000–2001; the RSC 'Chemistry of the Transition Metals' award for 2005; and the RSC 'Supramolecular Chemistry' Award for 2016. He has been Chair of the Editorial Board of 'RSC Advances' since the journal started in 2011.



dications, results in structures with a 2M:3L ratio, such that all donor atoms are used and all metal ions are coordinatively saturated (the 'principle of maximum site occupancy'). This ratio has been expressed in numerous ways in polyhedral cages which have a 2:3 ratio of vertices to edges, with a metal ion occupying each vertex and a bridging ligand occupying each edge. Each vertex must be at the conjunction of three edges such that each metal ion interacts with three ligand termini and is therefore octahedral.

The range of polyhedral shapes available to the cage family is controlled by these basic structural principles, and we have characterised an extensive family of such cages from M_4L_6 tetrahedra^{5a,b} through to a $M_{16}L_{24}$ tetra-capped truncated tetrahedron, our largest cage reported to date;^{5c} the syntheses and

structures of this family of cages were reviewed a few years ago.^{2c} The cages generally exhibit extensive aromatic stacking around the periphery between electron-poor (pyrazolyl-pyridine unit coordinated to a 2+ metal ion) and electron-rich (central aromatic spacer) ligand fragments which form alternating stacks; an example of inter-ligand stacking in a tetrahedral cage is in Fig. 3a.⁶

This stacking appears to contribute substantially to the cages' stability, helping to overcome the entropy penalty associated with formation of such large assemblies. The few cages which do not exhibit aromatic stacking in the solid state do not persist in solution.⁷ This stacking is facilitated by the flexibility of the ligands – arising from the methylene groups which act as 'hinges' – which permits them to adjust their conformations to maximise the stacking.

A key structural feature of all of these cages, and a consequence of the ligands' flexibility, is the presence of a combination of *fac* and/or *mer* tris chelate metal centres at different positions in the metal array, that can arise during cage formation because the two donor atoms of the pyrazolyl-pyridine units are inequivalent.⁸ When labile metal ions are used for cage assembly there is no control over this, with each cage type adopting different numbers of *fac* and/or *mer* tris-chelate metal vertices as required by that particular self-assembly process. Thus, the *ortho*-phenylene spaced ligand L^{o-ph} (Fig. 2) affords $[M_4(L^{o-ph})_6]^{8+}$ tetrahedral cages in which all metal centres have a *fac* tris-chelate coordination geometry (Fig. 4a), and in addition all metal ions have the same optical configuration resulting in *T* symmetry.^{5a,b} With the related ligand $L^{3,3-bi}$, tetrahedral $[M_4(L^{3,3-bi})_6]^{8+}$ cages also form, but with one *fac* and three *mer* tris-chelate vertices to give C_3 symmetric assemblies (Fig. 3 and 4b).^{6,9} The octanuclear cubic cages $[M_8(L^{1,5-nap})_{12}]^{16+}$ contain a mixture of six *mer* and two *fac* vertices (Fig. 4c),^{7a} whereas the truncated tetrahedral dodeca-

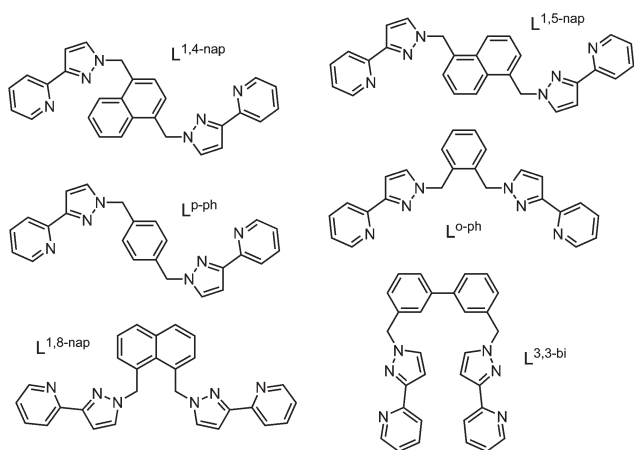


Fig. 2 Structures of the bis(pyrazolyl-pyridine) ligands that are referred to in this article.

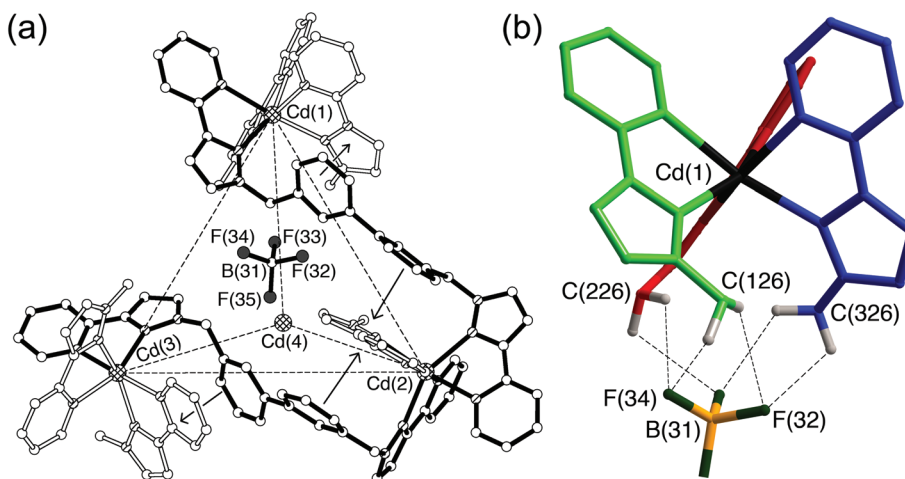


Fig. 3 (a) Structure of part of the complex cation of $[Cd_4(L^{3,3-bi})_6](BF_4)_8$, emphasising the inter-ligand aromatic stacking regions with arrows indicating the direction of the donor-acceptor interactions; (b) close-up view of the interaction of the bound anion with the convergent set of CH protons around the *fac* tris-chelate metal vertex (ref. 6).



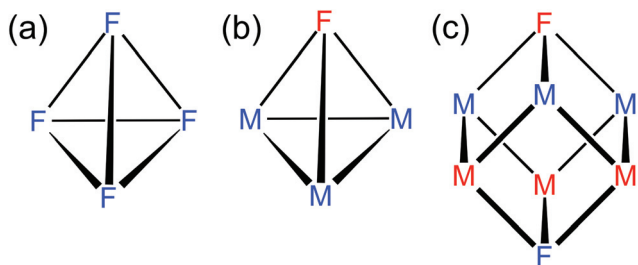


Fig. 4 Schematic diagrams of (a) $M_4(L^{O-ph})_6$, (b) $M_4(L^{3,3-bi})_6$ and (c) $M_8(L^{1,5-nap})_{12}$ cages, indicating the coordination geometry (*fac* or *mer*) at each position. The colours indicate how the metal ions can be divided into distinct sets in our stepwise synthetic strategy.

nuclear cages $[M_{12}(L^{1,5-nap})_{18}]^{24+}$ contain *only mer* tris-chelate metal vertices.¹⁰

Fig. 4 illustrates examples of the disposition of *fac* and *mer* tris-(pyrazolyl-pyridine) metal fragments at the vertices of different cages. These metal complex units are relatively structurally invariant between different cages, apart from minor differences in M–N distances arising from metal ions of different radii, with the structural variety of cages arising from the various ways in which different numbers of these *fac* or *mer* metal complex units are connected by different spacers.

Within the general class of $(M_2L_3)_n$ cages based on octahedral ions connected by bis-bidentate edge-bridging ligands, the presence of both geometric isomers of metal vertices in the same assembly is rare.¹¹ It is far more common that the bridging ligands are relatively rigid, lacking the high conformational flexibility that ours possess from the methylene spacers, which inevitably results in *fac* tris-chelate metal centres dominating. Typical examples include the cages of Raymond,¹² Nitschke,¹³ and others.¹⁴ Notable exceptions to this include a $Co_{10}L_{15}$ pentagonal prism^{15a} and an $Fe_{12}L_{12}$ icosahedral capsule^{15b} prepared by Nitschke and co-workers, both of which contain exclusively *mer* tris-chelate metal centres.

The occurrence of either or both types of vertex isomer in our cages has turned out to have two fundamentally important consequences. Firstly, it underpins the ability of the cages to act as hosts for hydrogen-bond accepting guests in organic solvents, because the arrangement of ligands around the *fac* tris-chelate vertices creates a hydrogen-bond donor pocket at which the guests bind (Fig. 3b). Secondly, it provides a basis for the synthetic control necessary to incorporate different metal ions at different sites in the cage superstructures, allowing some types of useful functional behaviour associated with kinetically inert metal ions to be incorporated into the cages. Whilst these two phenomena are distinct they have the same origin and are therefore interrelated. No other family of cages to our knowledge has provided a means for this simple geometric isomerism and its consequences to be explored in detail. The effects of the geometric isomerism of the cage vertices on both guest binding and control of self-assembly, which form the basis of this review, will now be discussed in turn.

Effect of geometric isomerism of vertices on host/guest chemistry

The presence of *fac* tris-chelate vertices at some positions in some of the cages turned out to play a crucial role in the ability of the cages to bind both anionic and neutral guests. We noticed from our early work with tetrahedral M_4L_6 cages based on L^{O-ph} and $L^{3,3-bi}$ that the small cavities contain anions which form a network of H-bonding interactions with inwardly-directed CH protons on the internal surface of the cationic cage.^{2a} With the $[M_4(L^{O-ph})_6]^{8+}$ cages the anions are located symmetrically in the centre of the cavity,^{5a,b} but in the $[M_4(L^{3,3-bi})_6]^{8+}$ cages the anion is clearly off-centre and displaced towards the *fac* tris-chelate vertex (Fig. 3b).^{6,9} A closer look shows that this permits a set of $CH\cdots X$ hydrogen bonds (where X is an electronegative atom from the anion, such as O from perchlorate or F from tetrafluoroborate or hexafluorophosphate) principally with the convergent set of methylene groups that form an H-bond donor pocket as a consequence of the *fac* tris-chelate geometry at that vertex.

We did not attach much significance to this until we made, much more recently, a systematic study of the host/guest chemistry of the cubic cage $[Co_8(L^{1,5-nap})_{12}]^{16+}$.^{16,17} Structural characterisation of the cage revealed that it has two *fac* tris-chelate vertices at either end of a long diagonal, with the other six vertices being *mer* tris-chelates. Fig. 5 shows the disposition of the two *fac* tris-chelate binding sites, as well as the convergent arrangement of CH protons in these positions that facilitates substrate binding. The threefold axis through the two *fac* tris-chelate units, and the inversion centre, result in molecular S_6 symmetry which is preserved in solution according to the ¹H NMR spectra.^{7a} Notably, the solvent molecule guests in the cavity (water or methanol) are located in the two binding pockets at the *fac* tris-chelate vertices,^{7a,16,17} just like the anions in the cavities of the $[M_4(L^{3,3-bi})_6]^{8+}$ cages (Fig. 3).^{6,9}

The central cavity has a volume of *ca.* 400 Å³ and is readily accessible through portals in the centres of the faces of the cube (Fig. 5a). According to the Rebek ‘55% rule’ the optimal volume for a bound guest should be *ca.* 220 Å³,¹⁸ which means that a wide range of small molecules could be plausible guest candidates. Accordingly we used ¹H NMR spectroscopy to screen a wide variety of potential guests in CD₃CN solution. By virtue of the paramagnetism associated with the high-spin Co(II) centres the ¹H NMR spectra of the cages are dispersed over the range +100 to –100 ppm,^{7a,16,17} which minimises overlap and makes changes in individual signals associated with guest binding easy to detect.

After screening many potential guests that showed no sign of binding, we identified that coumarin bound in the cavity of $[Co_8(L^{1,5-nap})_{12}]^{16+}$ with $K = 80 M^{-1}$.¹⁶ Binding was in slow exchange on the NMR timescale such that separate signals for empty and bound cage could be seen, with the former decreasing in intensity and the latter increasing in intensity during the titration; integration of these allowed the K value to be determined taking into account the concentrations of cage



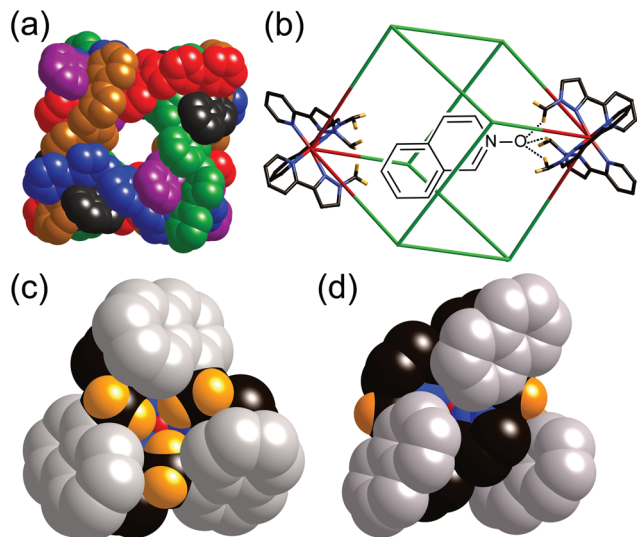


Fig. 5 (a) Space-filling view of the cage complex cation of $[\text{Co}_8(\text{L}^{1,5\text{-nap}})_{12}](\text{BPh}_4)_{16}$, with the ligands coloured separately for clarity; (b) a view (host and guest not to scale) showing the disposition of the two *fac* tris-chelate sites at either end of a long diagonal, and the hydrogen-bonding interaction with a hydrogen-bond accepting guest in the cavity; (c) a space-filling view of the environment around a *fac* tris-chelate vertex showing the convergent set of CH protons at the hydrogen-bonding site; and (d) a space-filling view of the environment around a *mer* tris-chelate vertex showing the absence of such a hydrogen-bonding pocket. Reprinted with permission from ref.17; copyright 2013, American Chemical Society.

and total guest. The ^1H NMR signals for bound coumarin were shifted substantially upfield due to the paramagnetism of the host, with the single biggest $\Delta\delta$ for a coumarin proton on binding being -12 ppm. Molecular modelling indicated that coumarin could fit nicely in the cavity in an orientation such that the carbonyl O-atom, a reasonable H-bond acceptor, was directed towards the convergent set of CH protons around one of the *fac* tris-chelate vertices: this oxygen atom occupies the same position as the oxygen atom of water or methanol solvent molecule guests in the ‘empty’ cage. Starting the calculation with the coumarin guest in a range of different orientations always resulted in this minimum-energy structure arising; this is illustrated in Fig. 5b for a different (but approximately isosteric) guest isoquinoline-*N*-oxide.¹⁷

So we had a hypothesis that coumarin binds in the cavity of $[\text{Co}_8(\text{L}^{1,5\text{-nap}})_{12}]^{16+}$ not just because of a shape/size match, but because the electronegative carbonyl O atom acts as an H-bond acceptor, interacting with the interior surface of the cage at the *fac* tris-chelate sites where several CH groups converge, and also where the surface is relatively highly charged due to its proximity to a partially-exposed metal ion (Fig. 5c). In agreement with this, isosteric guests such as isoquinoline-*N*-oxide in which the H-bond accepting O atom is more electron rich than that of coumarin (its H-bond acceptor β parameter¹⁹ is higher), bind more strongly.¹⁷

Subsequent structural characterisation of a wide range of cage/guest complexes has shown that, invariably, an H-bond

acceptor atom on the guest lies in the *fac* tris-chelate binding pocket;²⁰ two examples are shown in Fig. 6 and include one of a series of alkyl phosphonates used as chemical warfare agent simulants,^{20b} and the cyclic ketone cycloundecanone.^{20c} The extent to which this weak hydrogen-bonding interaction contributes to binding is highly solvent dependent. In MeCN, this H-bonding interaction between cage and guest is stronger than the interactions that the guest can form with solvent, so it contributes positively up to *ca.* 10 kJ mol^{-1} in the case of isoquinoline-*N*-oxide.¹⁷ In water an H-bonding guest could form stronger hydrogen bonds with the solvent than it can with the cage surface so this interaction does not drive binding thermodynamics, which are dominated by the hydrophobic effect associated with the non-polar part of the guest surface area.^{20a} However once the guest is desolvated and the hydrophobic effect has resulted in its uptake by the cage, the interaction with the *fac* tris-chelate vertex still serves to orient the guest in the cavity.

We have not yet extended detailed investigations of guest binding to other cages. However we note that the larger cages $[\text{M}_{16}(\text{L}^{p\text{-ph}})_{24}]^{32+}$ contain four *fac* tris-chelate vertices, disposed in a large tetrahedron around the central cavity which has a volume of *ca.* 1300 \AA^3 ,^{5c} so the possibility for large guests with multiple H-bond acceptor groups to bind, anchored at two or more sites by interactions with the cage interior surface, is appealing.

Initial studies on geometric isomers of mononuclear complexes

Given the importance of the *fac* tris-(pyrazolyl-pyridine) vertices of the cages in facilitating guest binding, we were interested to examine this further using isolated mononuclear complex units outside of the cage environment. In order to provide reasonable mononuclear analogues of the vertices, we chose the *mer* and *fac* isomers of mononuclear $[\text{M}(\text{L}^{\text{Bn}})_3]^{2+}$ where the ligand L^{Bn} is essentially half of the ligand $\text{L}^{1,5\text{-nap}}$ (Fig. 7). Preparation of these as their pure *fac* or *mer* isomers requires a kinetically inert metal ion, as use of labile Co(II) afforded – unsurprisingly – a statistical mixture of the two isomers. Given the requirement for a kinetically inert but synthetically tractable octahedral metal ion with a 2+ charge and similar M–N distances to those provided in the Co(II) cages, Ru(II) was the obvious choice.

It is well documented that post-synthetic separation of *mer* and *fac* isomers is generally not a trivial process;⁸ following preparation of $[\text{Ru}(\text{L}^{\text{Bn}})_3](\text{PF}_6)_2$ as the expected 3 : 1 mixture of *mer* and *fac* isomers, this became increasingly obvious. Reported methods of such isomeric separation by Piguet²¹ and Fletcher²² by chromatography or fractional crystallisation were unsuccessful. Consequently, a novel method of separation was devised starting from the complex $[\text{Ru}(\text{PyPzH})_3]^{2+}$, which contains three pyrazole NH groups which may be functionalised (see Fig. 7 for ligand structure).



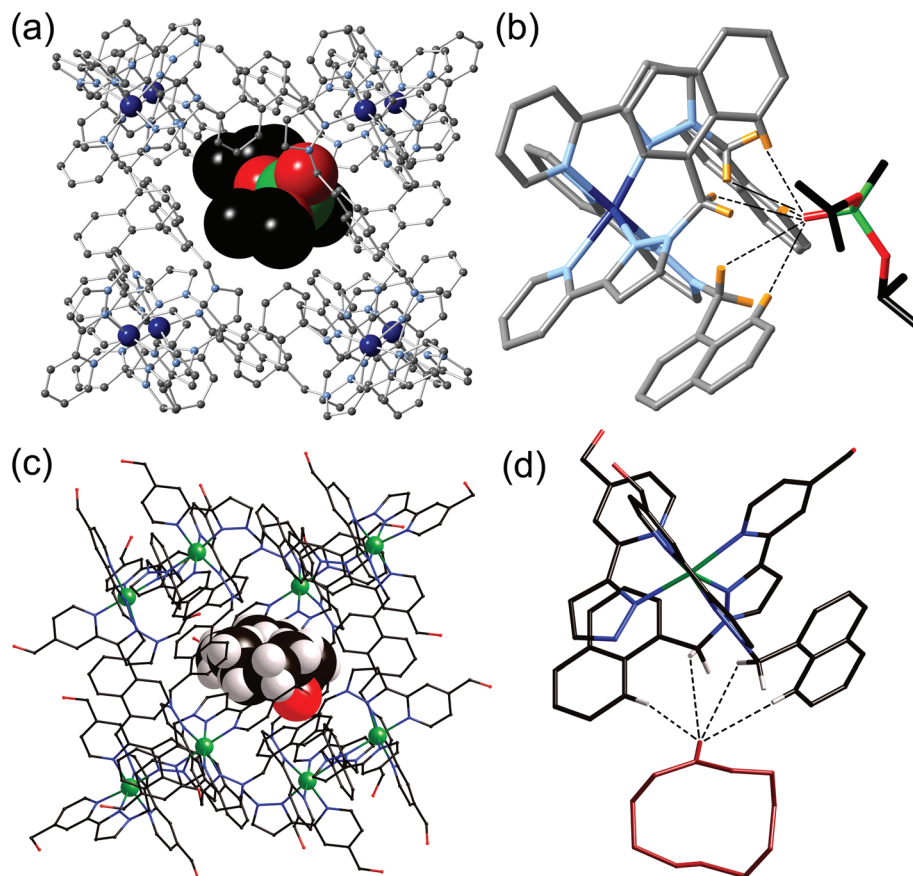


Fig. 6 (a) Crystal structure of the $[\text{Co}_8(\text{L}^{1,5\text{-nap}})_{12}]^{16+}$ host with a molecule of di(isopropyl)methylphosphonate as guest; (b) an expansion of (a) showing the hydrogen-bonding interactions between the guest and the CH groups around the *fac* tris-chelate vertex of the cage (CH...O distances shown by dashed lines are in the range 2.55–2.83 Å); (c) crystal structure of the $[\text{Co}_8(\text{L}^{1,5\text{-nap}})_{12}]^{16+}$ host with a molecule of cycloundecanone as guest; (d) an expansion of (c) showing the hydrogen-bonding interactions between the guest and the CH groups around the *fac* tris-chelate vertex of the cage (CH...O distances shown by dashed lines are in the range 2.54–3.06 Å). Parts (c) and (d) are reprinted with permission from ref. 20c; copyright 2014, the American Chemical Society.

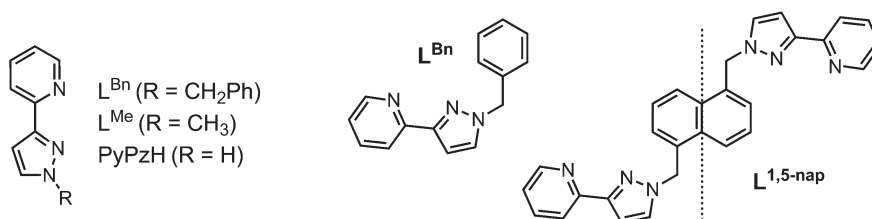


Fig. 7 Left: Structure of the ligands used in the mononuclear complex studies. Right: L^{Bn} and its relationship to $\text{L}^{1,5\text{-nap}}$.

$[\text{Ru}(\text{PyPzH})_3](\text{PF}_6)_2$ was prepared as 3 : 1 *mer*:*fac* statistical mixture of isomers, as was evident from the presence by four ligand environments with equal intensity in the ^1H NMR spectrum. Separation is based on the differing ability of the two isomers to form adducts with Cu(I) salts:²³ the three pyrazolyl N1 donors, which lie together on one face of the *fac* isomer, can coordinate to a Cu(I) ion in a chelating tridentate face-capping manner, which allows the *fac* isomer of $[\text{Ru}(\text{PyPzH})_3](\text{PF}_6)_2$ to be precipitated selectively. The *mer* isomer of

$[\text{Ru}(\text{PyPzH})_3](\text{PF}_6)_2$, in which the three pyrazolyl N1 donors do not converge, cannot coordinate to a Cu(I) ion in this way so remains in solution. Thus, the as-isolated 3 : 1 *mer*:*fac* statistical mixture could be quantitatively separated into pure *mer* and *fac* isomers.²⁴

With separation of these isomers achieved, alkylation of the reactive pyrazolyl NH groups with benzyl bromide was achieved with retention of isomeric integrity to yield the complexes *mer*- and *fac*- $[\text{Ru}(\text{L}^{\text{Bn}})_3](\text{PF}_6)_2$ as mononuclear models for the coordi-



nation cage vertices. The crystal structure of *fac*-[Ru(L^{Bn})₃](PF₆)₂ highlights the set of convergent protons from the three methylene groups which define the pocket where H-bonding guests bind in the cages. An acetone solvent molecule neatly demonstrates this viewpoint, with the carbonyl oxygen interacting with this binding pocket (Fig. 8).²⁴

The different abilities of these two geometric isomers of [Ru(L^{Bn})₃](PF₆)₂ to act as H-bond donors was demonstrated by titration of the hydrogen-bond acceptor isoquinoline-*N*-oxide into a solution of each isomer, which revealed a stronger interaction of isoquinoline-*N*-oxide with *fac*-[Ru(L^{Bn})₃](PF₆)₂ than with *mer*-[Ru(L^{Bn})₃](PF₆)₂. The absolute value of the binding 1 : 1 constant between isoquinoline-*N*-oxide and *fac*-[Ru(L^{Bn})₃](PF₆)₂ is much lower (*ca.* 1 M⁻¹) than in a cage complex host, because the local environment is different and also possibly because the hexafluorophosphate anions may compete for this binding site in solution which does not seem to happen in the cages where the anions remain surface-bound.^{20a} However the preference for binding to the *fac* compared to the *mer* isomer is clear (Fig. 9). In addition, during the titration of isoquinoline-*N*-oxide with *fac*-[Ru(L^{Bn})₃](PF₆)₂, one of the diastereotopic methylene proton signals was observed to shift, whereas the other did not, which provides good evidence for the *N*-oxide group of the guest interacting with the inwardly directed methylene protons of the host, but not to a significant extent with the outwardly directed protons (Fig. 10).

General methodologies for preparing heteronuclear assemblies: basic principles and some examples from other groups

Having found a route to pure *fac* or *mer* Ru(II) complexes with the pyrazolyl-pyridine chelate, with post-coordination alkylation of the pyrazolyl NH groups providing a route to extending the

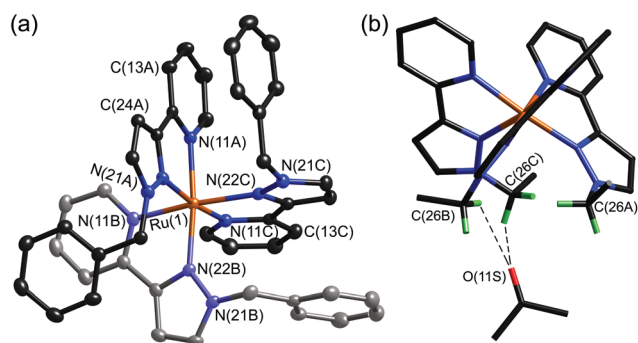


Fig. 8 (a) Structure of the complex cation of *fac*-[Ru(L^{Bn})₃](PF₆)₂·2Me₂CO. (b) Alternative view of the complex cation with the phenyl rings not shown, emphasising the convergent arrangement of methylene protons to form a hydrogen-bond donor site, and the presence of a hydrogen-bonded molecule of acetone at this site; the two shortest CH...O interactions are shown by dashed lines (ref. 24).

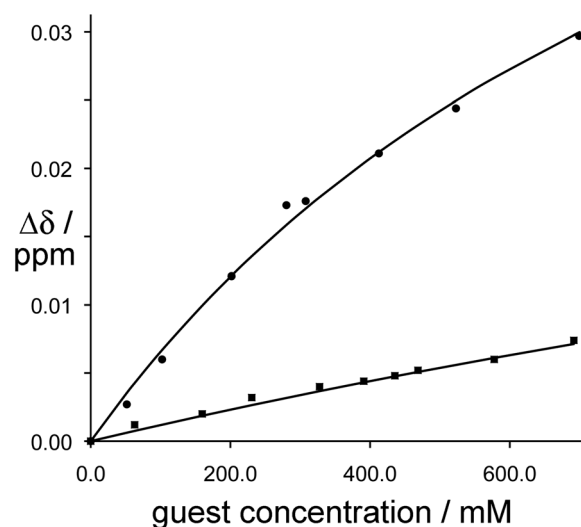


Fig. 9 ¹H NMR binding curves showing the shift of the methylene proton signals in *fac*-[Ru(L^{Bn})₃](PF₆)₂ (circles, upper line) and *mer*-[Ru(L^{Bn})₃](PF₆)₂ (squares, lower line) during titration with isoquinoline-*N*-oxide. For *fac*-[Ru(L^{Bn})₃](PF₆)₂ the data fit a 1 : 1 binding isotherm with *K* ≈ 1 M⁻¹; for *mer*-[Ru(L^{Bn})₃](PF₆)₂ the binding constant is too weak to quantify (ref. 24).

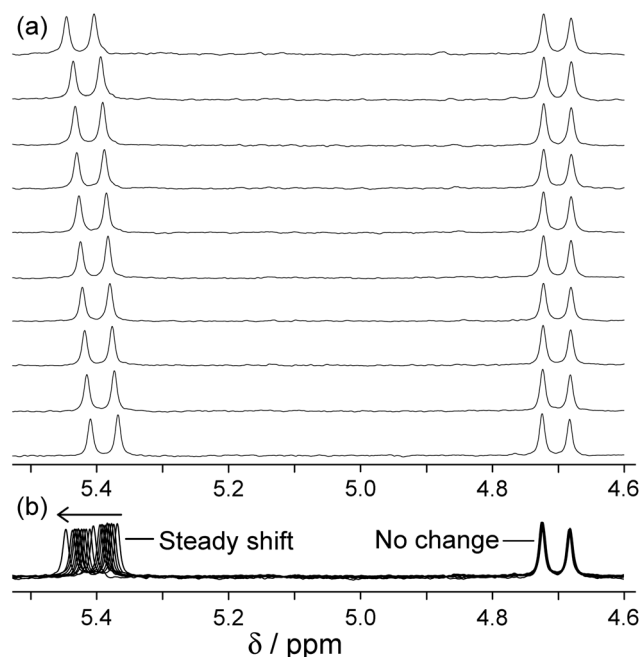


Fig. 10 Changes in the ¹H NMR chemical shift of the two inequivalent methylene proton signals of *fac*-[Ru(L^{Bn})₃](PF₆)₂ (0.23 mM) during titration with isoquinoline-*N*-oxide (up to 0.7 M) in CD₃CN. (a) Stacked plots; (b) overlaid plots to emphasise how one signal moves but the other does not (ref. 24).

ligands with different substituents, we realised that we now had an entry into stepwise assembly of heterometallic cages. Before this is discussed in the next section, we briefly summarise here other work on heterometallic coordination cages.



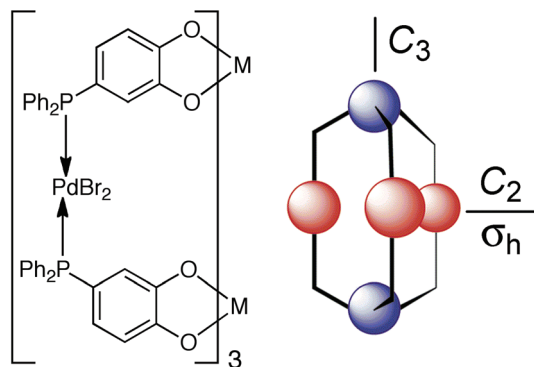


Fig. 11 An example of heterometallic self-assembly using the thermodynamic control approach: Raymond's phosphino-catechol ligand and the pentanuclear complex it forms on reaction with Ti(IV) and Pd(II) ions (blue and red spheres represent Ti(IV) and Pd(II), respectively). Reprinted with permission from ref. 25; copyright 2001, the American Chemical Society.

There exist two general methods for the formation of heterometallic supramolecular assemblies. The first is a thermodynamic approach, in which a ligand with orthogonal binding sites discriminates between two (or more) different types of metal based on the matching of metal ion and ligand types using the simple principles of hard/soft acid and base (HSAB) theory. Thus, a ligand possessing both hard and soft binding sites can selectively bind a hard and a soft metal ion at each site, respectively. Normally both metal ion types are labile such that the assembly occurs in one step, with the hard metal/hard ligand and soft metal/soft ligand combinations providing the orthogonal interactions that direct the self-assembly. For example, Raymond has used a ligand with soft phosphine termini and hard catechol termini which bind to Pd(II) and Ti(IV), respectively (Fig. 11);²⁵ we have used an unsymmetrical ligand with catechol and pyrazolyl-pyridine termini, which respectively bind to Ti(IV) and Zn(II) ions to form a tetrameric hetero-octanuclear cyclic helicate.²⁶ This general method has been used by many groups including those of Wang,²⁷ Shionoya²⁸ and Stang,²⁹ and has been well-covered in many reviews.^{2e,i,30}

This thermodynamic approach may also be used when the two orthogonal metal/ligand interactions are based on differing coordination numbers or geometric preferences rather than on hard/soft differences.³¹ For example, Nitschke and co-workers reported a heterometallic [Fe₈Pt₆L₂₄] cubic cage, which formed due to the differing geometric coordination preferences of each type of metal ion.^{31a} The ligand, possessing a pyridine terminus and a diimine terminus, selectively coordinates to Pt(II) *via* the pyridine donor to form square-planar coordination (face centres), and to octahedral Fe(II) ions using the chelating bidentate site to give octahedral coordination (vertices), enabling the synthesis of a heterometallic assembly with complete control of metal site selectivity. Again, this requires both metal ions to be kinetically labile, and in this case coordination of monodentate pyridyl

donors to Pt(II) is a sufficiently labile process for a conventional thermodynamic self-assembly to occur.

The second approach used to form heterometallic assemblies – which is the one we have adapted for our use – is the use of kinetically inert subcomponents, which is sometimes known as the ‘metallo-ligand’ or ‘complexes as ligands’ approach.^{32,33} In this strategy a kinetically inert mononuclear unit with pendant binding sites is used as a pre-formed building block; combining these with additional labile ions in a separate step then completes the assembly of heteronuclear assemblies in which different types of metal ion (inert and labile) are incorporated at specific sites with complete positional control. For example, the synthesis of a cage with octahedral tris-chelate metal ions at the vertices of a cube and square planar ions with four monodentate ligands at the face centres may be achieved by performing a metalloporphyrin component (Fig. 12).³³ A related alternative is to electrochemically ‘lock’ a system by converting a labile oxidation state to an inert one *after* the self-assembly process has taken place [*e.g.* Co(II) to Co(III)], but this method is less robust due to the structural rearrangements which may occur upon oxidation of the metal, for example changes in metal–ligand bond distances.³⁴

Stepwise self-assembly of heterometallic cages based on bis(pyrazolyl-pyridine) ligands

The preparation of pure *fac*-[Ru(PyPzH)₃](PF₆)₂ described above, and its elaboration into *fac*-[Ru(L^{Bn})₃](PF₆)₂ by alkylation with benzyl bromide,²⁴ provided the basis for our route into stepwise assembly of heterometallic versions of some of our coordination cages in which kinetically inert and kinetically labile metal ions are incorporated at pre-determined sites in the cage superstructure.

Heterometallic octanuclear cubic cages

We targeted in the first instance the octanuclear cubic cage [M₈(L^{1,5-nap})₁₂]¹⁶⁺ for two reasons. Firstly, we know that it has particularly extensive and interesting host/guest chemistry: being able to include redox metal ions such as Ru(II) in the cage might, for example, allow guest binding to be modulated by a redox change in the host. Secondly, the combination of two *fac* and six *mer* tris-chelate vertices that this cage contains^{7a} turned out to be particularly synthetically convenient, as explained below.

The eight metal vertices of the [M₈(L^{1,5-nap})₁₂]¹⁶⁺ cube can be split into two subsets of four (M^a and M^b, Fig. 13). When a kinetically inert metal ion with pendant binding sites is used as a building block and combined with labile metal ions in the next step, it must follow that ‘inert’ and ‘labile’ ions strictly alternate around the periphery. For [M₈(L^{1,5-nap})₁₂]¹⁶⁺ we find that each subset of ions – M^a and M^b – contains one *fac* and three *mer* tris-chelate units. This is a consequence of the fact that the two *fac* vertices lie at opposite ends of a long diagonal,



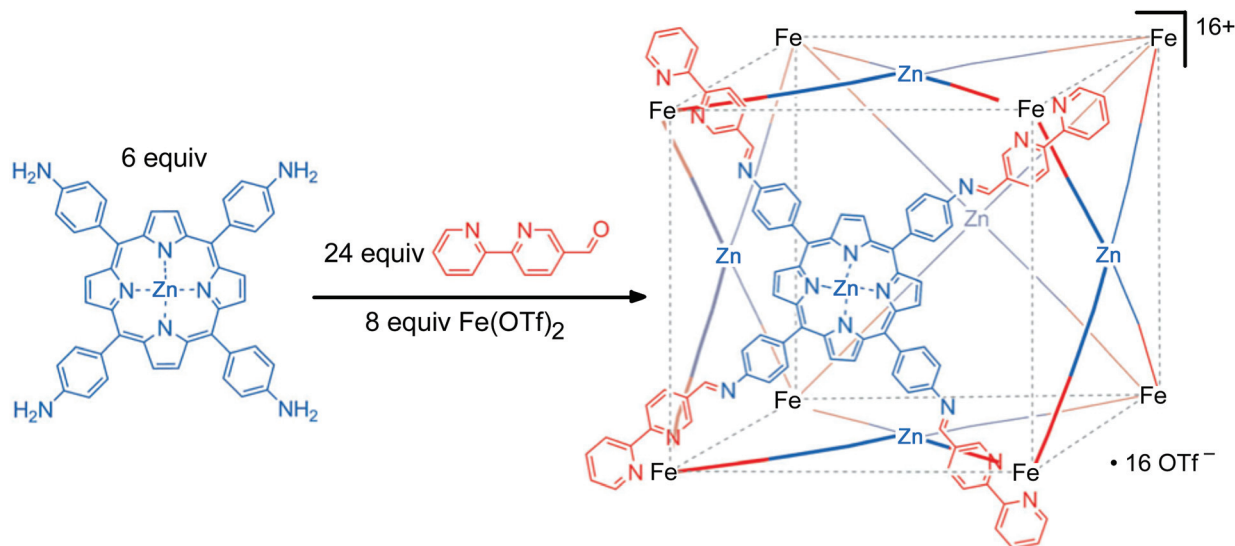


Fig. 12 An example of heterometallic self-assembly using the kinetic control approach: a preformed metalloporphyrin subcomponent is used as the basis of synthesising a heterometallic cube (see ref. 33a).

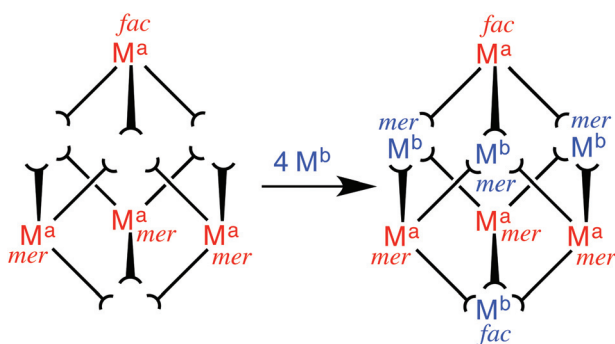


Fig. 13 Sketch outlining the stepwise synthetic strategy used to prepare the heterometallic cubic cage complexes: viz. the combination of pre-formed, kinetically inert $[(M^a)(L^{1,5-nap})_3]^{2+}$ ($M^a = Ru, Os$) with additional labile ions $(M^b)^{2+}$ ($M^b = Co, Cd$) in a 4 : 4 ratio to give octanuclear $[(M^a)_4(M^b)_4(L^{1,5-nap})_{12}]^{16+}$ (ref. 35).

such that each subset of four metal vertices can only contain one of the two *fac* vertices. Thus, if we can prepare $[Ru(L^{1,5-nap})_3]^{2+}$ (mononuclear complex with three pendant binding sites) as a 1 : 3 mixture of *fac* and *mer* isomers, we will have one subset of four metal ions M^a as the required combination of geometric isomers, plus all twelve ligands needed for the cage. Combination of this with labile ions M^b , such as $Co(II)$ or $Cd(II)$, in the second step will result in assembly of the pendant twelve binding sites around the four M^b ions to complete assembly of the cage, with the necessary 1 : 3 *fac* : *mer* ratio of M^b ions arising naturally from the assembly process. What makes this particularly convenient is that a 1 : 3 mixture of *fac* and *mer* isomers of $[Ru(L^{1,5-nap})_3]^{2+}$ is exactly what is expected to arise on statistical grounds⁸ during its synthesis from a source of $Ru(II)$ and three equivalents of $L^{1,5-nap}$, which

means that no separation of isomers or isomer-specific synthetic routes should be required.

Reaction of $RuCl_2(dmsO)_4$ with excess $L^{1,5-nap}$ yielded $[Ru(L^{1,5-nap})_3]^{2+}$ in the required 3 : 1 *mer* : *fac* ratio, as determined by 1H NMR spectroscopy.³⁵ Each $L^{1,5-nap}$ ligand is coordinated to $Ru(II)$ through one pyrazolyl-pyridine terminus with the second one pendant and available for propagation of the cage. Although bulky ligands sometimes give a higher than expected proportion of the *mer* isomer for steric reasons,⁸ that was not the case here. This kinetically inert subcomponent, which possesses three pendant pyridyl-pyrazole units, was then combined with $Cd(ClO_4)_2$ to complete assembly of the cage. The labile $Cd(II)$ ions direct the assembly of the pendant binding groups from the pre-formed $Ru(II)$ complexes in a reversible self-assembly step, and following crystallisation from nitromethane the mixed-metal $[Ru_4Cd_4(L^{1,5-nap})_{12}](ClO_4)_{16}$ cage was isolated.³⁵

The identity of the cage was confirmed by solution and solid-state studies. High-resolution mass spectrometry confirmed the Ru_4Cd_4 formulation, and the synthetic route used necessarily means that these two metal ion types should alternate around the cage. This was confirmed crystallographically (Fig. 14): the heteronuclear cage $[Ru_4Cd_4(L^{1,5-nap})_{12}](ClO_4)_{16}$ is basically isostructural with the homonuclear analogues reported previously,^{7a,16,17,20} but significantly different $M-N$ bond distances around $Ru(II)$ and $Cd(II)$ allowed unambiguous assignment of the metal ions. In addition, deliberate misassignment of the Ru metal centres as Cd (and *vice versa*) resulted in significantly worsened thermal displacement parameters for those atoms during the refinement, confirming the correct assignment.³⁵

We could perform an identical type of synthesis using $Os(II)$ as the kinetically inert component, allowing stepwise formation of heterometallic $[Os_4M_4(L^{1,5-nap})_{12}]^{16+}$ ($M = Co, Cd$)



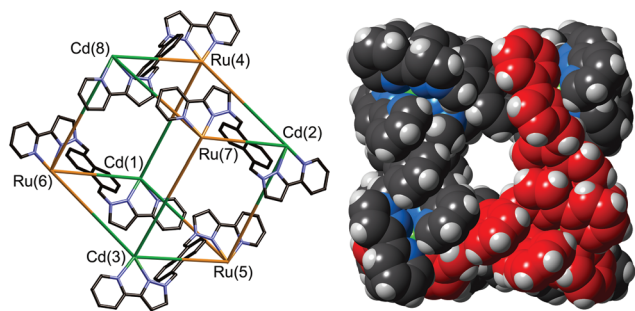


Fig. 14 Left: A view of $[\text{Ru}_4\text{Cd}_4(\text{L}^{1.5\text{-nap}})_{12}](\text{ClO}_4)_{16}$ emphasizing the approximately cubic array of metal ions with four of the bridging ligands included (ref. 35). Right: Space-filling view of the complex cation of $[\text{Os}_4\text{Cd}_4(\text{L}^{1.5\text{-nap}})_{12}](\text{ClO}_4)_{16}$, with one of the pre-formed *fac*- $[\text{Os}(\text{L}^{1.5\text{-nap}})_3]^{2+}$ units highlighted in red (ref. 36).

cages.³⁶ In these cases the metal ions at the M^{a} and M^{b} sites could not be distinguished crystallographically, as disorder in the cage orientation in the crystal means that all metal sites had to be refined as a 50 : 50 mixture of Os(II) and the labile metal ion. However, as before, the high-resolution ES mass spectra confirmed the cage formulation with four of each type of metal ion; and the synthetic route necessarily results in the metal ions alternating around the periphery, as was established for the Ru_4Cd_4 cage.

Incorporation of Ru(II) or Os(II) tris-diimine units into the octanuclear cages brings new behaviour to the cages in the form of redox activity associated with reversible $\text{M}(\text{II})/\text{M}(\text{III})$ couples for both Ru and Os. For both the Ru_4Cd_4 and Os_4Cd_4 cages, cyclic voltammetry revealed a single chemically reversible redox process associated with all four metal-centred redox processes occurring simultaneously: unsurprisingly, the Ru(II) or Os(II) ions within a cage are too far apart to show any electronic coupling which would allow the four one-electron process to occur at different potentials and be individually resolved. For the Ru_4Cd_4 cage the redox process occurred at +0.96 V vs. the ferrocene/ferrocenium couple (Fc/Fc^+);³⁵ for the Os_4Cd_4 cage it was at +0.46 V vs. Fc/Fc^+ (Fig. 15).³⁶ The considerably greater ease of oxidation of Os(II) compared to Ru(II) in the same coordination environment is normal and arises

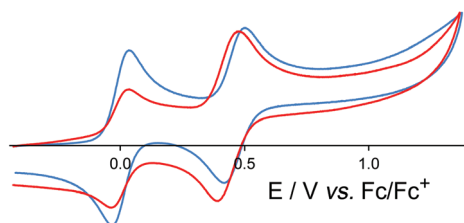


Fig. 15 Cyclic voltammograms in MeCN of $[\text{Os}(\text{L}^{1.5\text{-nap}})_3](\text{PF}_6)_2$ (blue trace) and $[\text{Os}_4\text{Cd}_4(\text{L}^{1.5\text{-nap}})_{12}](\text{ClO}_4)_{16}$ (red trace) at a scan rate of 0.1 V s^{-1} . In both cases the reversible wave at 0.0 V is internal ferrocene added as a reference (ref. 36).

from the smaller effective nuclear charge experienced by the 5d electrons of Os(II) compared to the 4d electrons of Ru(II). In both cases, these redox processes are (i) at similar potentials to those observed for the mononuclear Ru(II) or Os(II) subcomponent complexes in the same coordination environment, and (ii) fully chemically reversible, meaning that the cage can be switched in a single step between 16+ and 20+ forms without any decomposition. This was further confirmed by the observations that (i) aerial oxidation of the $\{\text{Os}_4^{\text{II}}\text{Cd}_4\}^{16+}$ cage to the $\{\text{Os}_4^{\text{III}}\text{Cd}_4\}^{20+}$ form resulted in no significant change in diffusion coefficient by DOSY NMR studies, and (ii) overlaid UV/Vis absorption spectra recorded during gradual oxidation of $\{\text{Os}_4^{\text{II}}\text{Cd}_4\}^{16+}$ cage to $\{\text{Os}_4^{\text{III}}\text{Cd}_4\}^{20+}$ showed a clear isosbestic point.³⁶

Given that we have demonstrated how binding of electron-rich guests in organic solvents involves a substantial contribution from charge-assisted hydrogen-bonding to the internal surface of the cage,¹⁷ a reversible redox swing could affect the strength of the host-guest interaction and may provide a mechanism for controlling uptake and release of bound guests that operates in a complementary way to changing the charge on the guest by protonation/deprotonation.^{20d}

In addition to the redox properties imparted to the cages, the Os_4Cd_4 cage was found to have potentially valuable photo-physical properties arising from a long-lived ³MLCT excited state that is a good photo-electron donor. The absorption spectrum of the mononuclear ‘vertex unit’ $[\text{Os}(\text{L}^{1.5\text{-nap}})_3](\text{PF}_6)_2$ (as-synthesised 1 : 3 mix of *fac* and *mer* isomers) showed features typical of an Os(II) tris-diimine complex (Fig. 16), with spin-allowed ¹MLCT absorptions at around 400 nm, plus a weaker spin-forbidden ³MLCT absorption manifold which provides a low-energy absorption tail in the 500–600 nm region.

$[\text{Os}(\text{L}^{1.5\text{-nap}})_3](\text{PF}_6)_2$ showed a typical broad, structureless luminescence band with a maximum at 625 nm in MeCN (Fig. 16, inset) and two lifetime components of 200 ns (minor

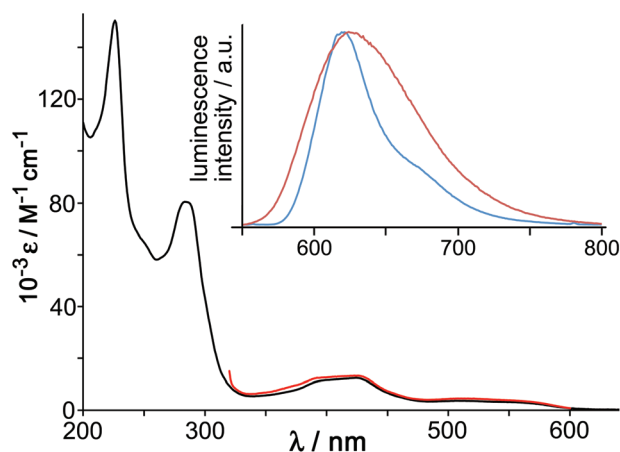


Fig. 16 Main figure: UV/Vis absorption spectrum of $[\text{Os}(\text{L}^{1.5\text{-nap}})_3](\text{PF}_6)_2$ in MeCN (black) with, overlaid in red, the excitation spectrum for the Os-based emission at 620 nm. Inset: luminescence spectra of $[\text{Os}(\text{L}^{1.5\text{-nap}})_3](\text{PF}_6)_2$ in MeCN fluid solution at room temperature (red trace) and of $[\text{Os}(\text{L}^{1.5\text{-nap}})_3]\text{Cl}_2$ in EtOH/MeOH (4 : 1, v/v) glass at 77 K (blue trace) (ref. 36).



component) and 72 ns (major component), consistent with the presence of a mixture of *fac* and *mer* isomers.³⁶ At 77 K the emission spectrum of $[\text{Os}(\text{L}^{1,5\text{-nap}})_3]^{2+}$ is sharpened and the maximum slightly blue-shifted with the highest energy feature at 620 nm (Fig. 16, inset). The ³MLCT energy content is therefore $16\,100\text{ cm}^{-1}$, which is relatively high for an Os(II) tris-diimine unit;^{37,38} and this, together with the ease with which the Os(III) state can be formed by oxidation, makes the photo-excited state of $[\text{Os}(\text{L}^{1,5\text{-nap}})_3](\text{PF}_6)_2$ a better electron donor than the well-known $[\text{Ru}(\text{bipy})_3]^{2+}$ unit that has been widely used in photocatalysis.³⁸

The photophysical properties of the mononuclear $[\text{Os}(\text{L}^{1,5\text{-nap}})_3](\text{PF}_6)_2$ unit were essentially unchanged when these units are incorporated into the cage $[\text{Os}_4\text{Cd}_4(\text{L}^{1,5\text{-nap}})_{12}](\text{ClO}_4)_{16}$. Significantly, the strong naphthalene-based fluorescence characteristic of the free ligand, and which we also saw in the cage complex $[\text{Cd}_8(\text{L}^{1,5\text{-nap}})_{12}](\text{ClO}_4)_{16}$,^{7a} is completely quenched; this implies the presence of (naphthyl) → Os(II) energy-transfer from the stacked ligand array to the Os(II) ions at the vertices of the cage.

This cage accordingly has the potential be a good excited-state photoelectron donor to electron-deficient guests that occupy the central cavity. A particularly exciting possibility is that the array of four long-lived chromophores surrounding a single bound guest may provide the possibility of multiple photoinduced electron transfer events to a single guest in a supramolecular assembly. Such studies are in progress.

A heterometallic $\text{Ru}_4\text{Cd}_{12}$ cage

The stepwise synthetic methodology described above was then taken a significant step further, with preparation of a hexadecanuclear cage^{5c,39,40} containing not just two different types of metal ion at different vertices of the metal polyhedron, but also containing a mixture of two different types of ligand along different edges. For this we focussed on the $[\text{M}_{16}\text{L}_{24}]^{32+}$ cages, which can be formed with either $\text{L}^{p\text{-ph}}$ or $\text{L}^{1,4\text{-nap}}$ along the edges, and any of several octahedral dications at the vertices.^{5c,39,40} As this is the largest of the cages in this family identified so far it presents a particularly appealing challenge; and the arrangement of *fac* and *mer* tris chelate units in this type of cage lends itself particularly well to a stepwise assembly approach.

The arrangement of metal ion geometries is such that there are four triangular $\{\text{M}_3(\mu\text{-L})_3\}^{6+}$ cyclic helical units, in which all three metal ions have a *mer* geometry. These are connected by *fac*- $\{\text{ML}_3\}^{2+}$ units, each of which links to three different $\{\text{M}_3(\mu\text{-L})_3\}^{6+}$ units *via* its pendant binding sites. The result is a structure best described as a capped truncated tetrahedron, with the four *fac*- $\{\text{ML}_3\}^{2+}$ vertices being arrayed at the vertices of a large tetrahedron; although somewhat cumbersome to describe this is easy to visualise in Fig. 17.

A 'retrosynthetic analysis' of the cage allows us to identify how best to dissect the structure into component parts for a stepwise synthesis. The 16 metal ions can be conveniently split into a set of four (*fac*, isolated from one another; red in Fig. 16) and a set of 12 (*mer*, connected to one another in sets

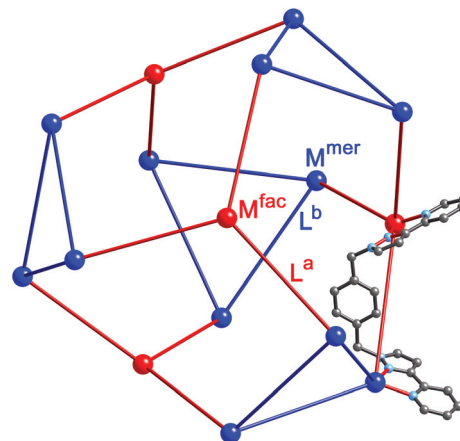


Fig. 17 Representation of the core structure of $[\text{Cd}_{16}(\text{L}^{p\text{-ph}})_{24}](\text{ClO}_4)_{32}$ (ref. 39) with one bridging ligand included. All metal sites are Cd(II) but the two different types of geometric isomer are colour-coded: *fac* tris-chelates are in red (M^{fac} , see main text) and *mer* tris-chelates are in blue (M^{mer}). Likewise the two ligand environments are L^{a} in red, and L^{b} in blue. The blue triangles are $\text{M}_3(\mu\text{-L})_3$ cyclic helicates subcomponents, four of which are connected by (red) ML_3 units.

of three; blue in Fig. 16). The ligands likewise can be split into two types: those that connect a *fac* to a *mer* vertex (L^{a} , red), and those connecting two *mer* vertices in the cyclic helicate triangular panels (L^{b} , blue). There are 12 of each type of ligand. As with the mixed-metal cubes, our initial choice of metal ions is Ru(II) for the kinetically inert vertices, given the straightforward and well-established synthesis and purification of stable tris-chelate complexes as their pure *fac* and *mer* isomers;²⁴ and diamagnetic Cd(II) for the kinetically labile vertices to facilitate ¹H NMR analysis. The most logical solution is to use Ru(II) at the four M^{fac} sites and Cd(II) at the twelve M^{mer} sites. This will permit the three pendant binding sites associated with each (inert) Ru(II) unit to connect to three (labile) Cd(II) ions during the second assembly step. Around the triangular helical faces, three Cd(II) ions will end up adjacent to one another but as they are kinetically labile that is not an issue.

The strategy requires preparation of homoleptic *fac*- $[\text{Ru}(\text{L}^{\text{a}})_3]^{2+}$ units in which L^{a} could be either $\text{L}^{p\text{-ph}}$ or $\text{L}^{1,4\text{-nap}}$. Each of these will necessarily bind to three Cd(II) ions in the subsequent assembly step. The remaining bridging ligands L^{b} , which connect the Cd(II) ions around the triangular cyclic helicate units, will need to be added separately to the reaction. There is no problem with them being chemically different from L^{a} , as long as both L^{a} and L^{b} support the same cage structure (as $\text{L}^{p\text{-ph}}$ and $\text{L}^{1,4\text{-nap}}$ do).^{5c,40} This dissection of the structure therefore suggests that a cage containing two different metal ions at predictable positions, and two different ligand types at predictable positions, can be assembled from four pre-prepared *fac*- $[\text{Ru}(\text{L}^{p\text{-ph}})_3]^{2+}$ units, twelve additional Cd(II) ions, and twelve additional ligands $\text{L}^{1,4\text{-nap}}$ to give the heteronuclear, heteroleptic cage $[\text{Ru}_4\text{Cd}_{12}(\text{L}^{p\text{-ph}})_{12}(\text{L}^{1,4\text{-nap}})_{12}]^{32+}$ (Fig. 18). In this assembly $\text{M}^{\text{fac}} = \text{Ru}$; $\text{M}^{\text{mer}} = \text{Cd}$; $\text{L}^{\text{a}} = \text{L}^{p\text{-ph}}$; $\text{L}^{\text{b}} = \text{L}^{1,4\text{-nap}}$ and there is no possibility for disorder of metal ions or



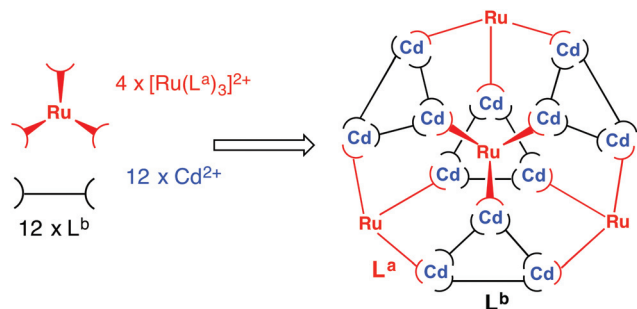


Fig. 18 Sketch of the stepwise synthetic strategy used to prepare the heterometallic, mixed-ligand cage: *viz.* combination of pre-formed *fac*-[Ru(L^a)₃]²⁺ (red), additional labile Cd²⁺ ions (blue), and free ligand (L^b, black) in a 4:12:12 ratio to give hexadecanuclear [Ru₄Cd₁₂(L^a)₁₂(L^b)]³²⁺ (ref. 43).

ligand types between sites as long as the [Ru(L^{p-ph})₃]²⁺ units remain stable as the *fac* isomer.

The key to this is therefore preparation of the kinetically inert Ru(II) complex [Ru(L^{p-ph})₃][PF₆]₂ as the pure *fac* isomer. To avoid any tedious separation of isomers, we prepared isomerically pure *fac*-[Ru(L^{p-ph})₃][PF₆]₂ using the same method that we described above for pure *fac*-[Ru(L^{Bn})₃](PF₆)₂, which was used in the modelling of coordination cage vertices.²⁴ Thus, *fac*-[Ru(PyPzH)₃](PF₆)₂ was alkylated at the pyrazolyl NH positions using the previously-reported intermediate **A**,⁴¹ which consists of a pyrazolyl-pyridine terminus connected to a *para*-xylyl-bromide (Fig. 19), under conditions mild enough to prevent any *fac/mer* scrambling at the Ru(II) centre. This afforded pure *fac*-[Ru(L^{p-ph})₃](PF₆)₂; its crystal structure shows how all three pendant arms are arranged on the same face of the complex (Fig. 20).⁴²

This is the key intermediate that makes the synthetic strategy proposed in Fig. 18 possible. The subcomponent *fac*-[Ru(L^{p-ph})₃][PF₆]₂ was combined with Cd(BF₄)₂ and L^{1,4-nap} in a 1:3:3 ratio – all of the component parts necessary to complete assembly of the mixed metal, mixed-ligand cage – in nitromethane. Recrystallisation over several weeks afforded the product as X-ray quality yellow crystals, whose crystal structure revealed the desired cage complex [Ru₄Cd₁₂(L^{p-ph})₁₂(L^{1,4-nap})₁₂](PF₆)₇(BF₄)₂₅ (Fig. 21 and 22).⁴³

It is clear from the crystal structure that the core structure of the cage is the same as that of the previously reported [M₁₆L₂₄]³²⁺ cages,^{5c,39,40} as required, with sixteen metal ions

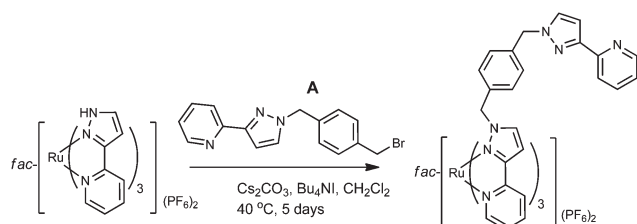


Fig. 19 Preparation of *fac*-[Ru(L^{p-ph})₃](PF₆)₂ (ref. 42).

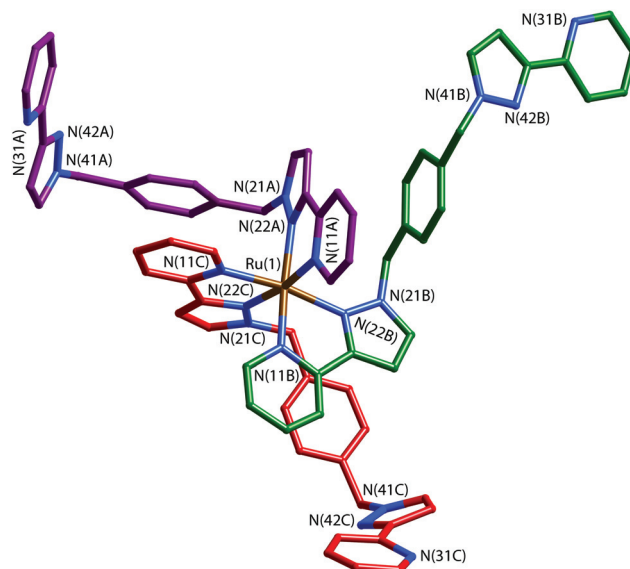


Fig. 20 Structure of the complex cation of *fac*-[Ru(L^{p-ph})₃][PF₆]₂ acetone with the three ligands coloured differently for clarity (ref. 42).

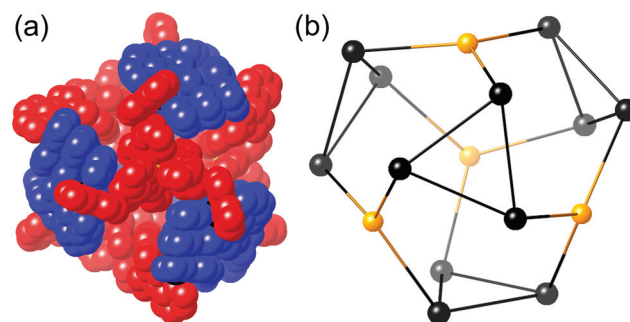


Fig. 21 Two views of the crystal structure of [Ru₄Cd₁₂(L^{p-ph})₁₂(L^{1,4-nap})₁₂](PF₆)₇(BF₄)₂₅. Left: The entire complex cation in spacefilling view (L^{1,4-nap} shown in blue, L^{p-ph} shown in red); Right: Structure of the Ru₄Cd₁₂ core (Ru shown in yellow, Cd shown in black) (ref. 43).

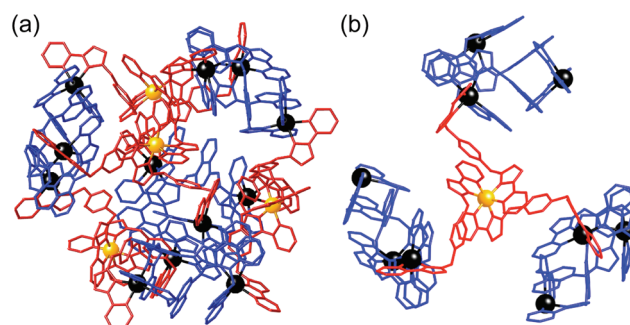


Fig. 22 Left: View of the complete complex cation of [Ru₄Cd₁₂(L^{p-ph})₁₂(L^{1,4-nap})₁₂](PF₆)₇(BF₄)₂₅, (same colouring scheme as Fig. 21). Right: Partial view of the complex, emphasising how each *fac*-[Ru(L^{p-ph})₃]²⁺ vertex is connected to three [Cd₃(L^{1,4-nap})₃]⁶⁺ cyclic helicate subunits (ref. 43).



arrayed in a tetra-capped truncated tetrahedral array with M...M separations along the edges in the region of 10 Å (Fig. 21 and 22). The identities of the Ru(II) and Cd(II) ions are clear from their significantly different M–N distances (Ru–N, 2.0–2.1 Å; Cd–N, 2.3–2.4 Å). The different ions are in their allotted positions according to the synthetic scheme with the Ru(II) ions occupying the four *fac* sites and the Cd(II) ions occupying the twelve *mer* sites. The two different types of ligand are trivial to distinguish as they are chemically different, with the twelve L^{p-ph} ligands (containing a 1,4-phenylene spacer) spanning the Ru...Cd edges, and the twelve $L^{1,4-nap}$ ligands spanning the Cd...Cd edges around the Cd_3 triangles. The other features of the structure (inter-ligand stacking around the cage periphery, disposition of anions both inside the cavity and around the cage surface) are the same as has been reported before with the parent $\{M_{16}L_{24}\}^{32+}$ cages.^{5c,39,40}

The cage is stable in solution, with high-resolution ESMS confirming the cage formulation and an 800 MHz 1H NMR spectrum confirming the expected symmetry, with two independent ligand types in a 1 : 1 ratio, each with no internal symmetry, corresponding to 42 independent 1H signals of equal intensity. A DOSY spectrum clearly confirmed the presence of a single species with a diffusion coefficient typical of a cage of this size but quite different from that of any mononuclear species such as $fac-[Ru(L^{p-ph})_3][PF_6]_2$.⁴² Unlike other cages based on L^{p-ph} as the bridging ligand which rearrange slowly (days/weeks) in solution,^{5c} $[Ru_4Cd_{12}(L^{p-ph})_{12}(L^{1,4-nap})_{12}](PF_6)_7(BF_4)_{25}$ is indefinitely stable, which we ascribe to the presence of the $L^{1,4-nap}$ ligands in the ligand set which provide an increased surface area for inter-ligand π -stacking compared to L^{p-ph} .⁴⁰ In addition the presence of four kinetically inert Ru(II) centres will aid solution stability, as these are unlikely to undergo dissociation of a chelating ligand under mild conditions – which is the essential first step to rearrangement of a coordinatively saturated complex at room temperature.

It is clear from this that the ability to prepare kinetically inert Ru(II)-based mononuclear ‘complex ligands’ with the necessary isomeric purity provides a powerful tool for the

rational synthesis of these cages. In principle the same methodology could be extended to other octahedral metal ions with desirable redox or photophysical properties [Os(II), Ir(III)...] to prepare new types of cage with specific types of useful, metal-based property incorporated into the metal superstructure at precisely controlled positions.

Stepwise self-assembly of an adamantoid Ru_4Ag_6 structure

Finally, we show how we have extended the work reported in the previous section to the preparation of a new cage type based on a mixture of metal ions with different coordination preferences; six-coordinate octahedral Ru(II), and four-coordinate tetrahedral Ag(I).

Having prepared geometrically pure $fac-[Ru(L^{p-ph})_3][PF_6]_2$ we also tested the assembly of this complex with Ag(I) salts. The hope was that the use of a kinetically labile metal ion with a markedly different coordination geometry to Ru(II) would provide an entry into structurally novel assemblies. On the basis that three pendant bidentate sites are available for coordination from $fac-[Ru(L^{p-ph})_3](PF_6)_2$, and that Ag(I) ions are likely to prefer a four-coordinate geometry with two bidentate chelating ligands, we combined $fac-[Ru(L^{p-ph})_3](PF_6)_2$ with 1.5 equivalents of $AgPF_6$ (following, again, the principle of maximum site occupancy).⁴⁴ If each pendant ligand fragment from the $fac-[Ru(L^{p-ph})_3](PF_6)_2$ unit coordinates to a different Ag(I) ion, as is likely on steric grounds given the distance between the pendant pyrazolyl-pyridine units, we might expect a mixed-metal cage in which each $[Ru(L^{p-ph})_3]^{2+}$ unit caps a triangular array of Ag(I) ions.

The crystalline product proved to be the decanuclear Ru_4Ag_6 cage $[Ru_4(L^{p-ph})_{12}Ag_6](PF_6)_{14}$ (Fig. 23 and 24). The cage core has an adamantane-like structure, with a Ru(II) tris-chelate unit at each of the four three-connected vertices which are arranged in an approximate tetrahedron. An Ag(I) bis-chelate unit occupies each of the six two-connected vertices. The structure can therefore be described as a tetrahedral array of Ru(II) ions with an Ag(I) ion lying in the centre of each

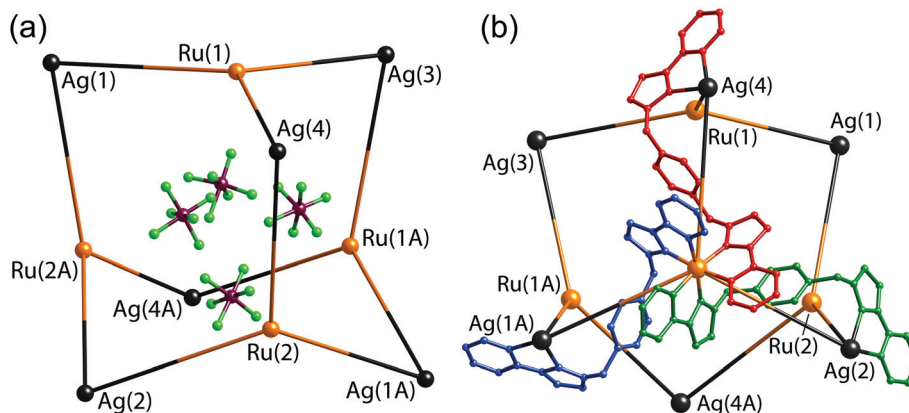


Fig. 23 Two views of the structure of $[Ru_4(L^{p-ph})_{12}Ag_6](PF_6)_{14}$: (a) the adamantane-like arrangement of metal ions, with the four anions that lie within the cavity also shown; (b) the metal superstructure with three of the bridging ligands included (ref. 42).



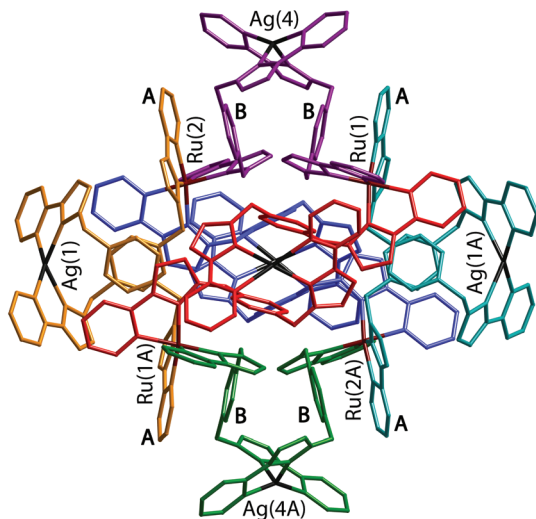


Fig. 24 A view of the complete complex cation of $[\text{Ru}_4(\text{L}^{\text{p-ph}})_{12}\text{Ag}_6](\text{PF}_6)_{14}$. The two ligands coordinated to each $\text{Ag}(\text{i})$ have the same colour. Labels A and B denote the electron-deficient (pyrazolyl-pyridine) and electron-rich (phenyl) units involved in the pairwise π -stacking interactions (ref. 42).

$\text{Ru}\cdots\text{Ru}$ edge (Fig. 23), with every adjacent $\text{Ru}(\text{II})/\text{Ag}(\text{i})$ pair connected by a bis-bidentate bridging ligand $\text{L}^{\text{p-ph}}$.

The flexibility of the ligands associated with the CH_2 'hinges' allows them to adopt a conformation which maximises inter-ligand π -stacking,^{2c} with every central (electron-rich) phenyl ring of a bridging ligand (labelled 'B' in Fig. 24) lies parallel to, and overlapping with, an (electron deficient) pyrazolyl-pyridine unit of another ligand coordinated to a $\text{Ru}(\text{II})$ ion (labelled 'A' in Fig. 24), forming alternating stacks of electron-rich and electron-deficient components. In the view in Fig. 24 we can see four such A/B stacked pairs; there are twelve such interactions overall, involving every phenyl group.

The structural integrity of the complex in solution was confirmed by ES mass spectrometry and ^1H NMR spectroscopy. That this species is a large assembly is confirmed by its DOSY spectrum which clearly shows that all of its ^1H signals belong to a single species which has a much lower diffusion rate than $\text{fac}[\text{Ru}(\text{L}^{\text{p-ph}})_3][\text{PF}_6]_2$.⁴²

Assembly of this adamantanoid cage therefore is based on an obviously different type of synthetic control compared to the examples using purely octahedral metal ions, with its adamantane-like structure thus relies on two different types of geometric control at different metal sites. It requires a combination of metal that are three-connected for the vertices of the cage [each tris-chelate, $\text{Ru}(\text{II})$ ion is connected to three $\text{Ag}(\text{i})$ ions]; and two connected [each bis-chelate $\text{Ag}(\text{i})$ ion is connected to two $\text{Ru}(\text{II})$ ions] along the edges of the cage. As with the first two examples reported above however, the principle of using a pre-formed, kinetically inert subcomponent which is combined with a labile metal ion a separate step is still crucial.

Conclusions

Coordination cage chemistry has come a long way since the days of exploratory synthesis, when simply combining labile components and characterising the products that formed was the extent to which any planning was realistically achievable. As the 'rules' of self-assembly have become ever more clear to the supramolecular chemist, rational design of more complicated structures becomes increasingly feasible. The synthetic methodology that we have developed – based on the preparation of kinetically inert mononuclear subcomponents with a particular *fac*:*mer* isomeric ratio, to exploit the distribution of such sites in the cages – has clear benefits. Firstly, it is a useful synthetic tool which allows synthetic control that can be exploited in the rational synthesis of new types of cage. Secondly, it allows specific types of metal-based functionality (we have used the examples of redox activity and luminescence) to be included in the cage superstructure at specific sites, thus allowing cages to be used as active participants in functional behaviour rather than just passive 'containers'. Finally – and this is specific to our cage family – this has potential importance for control of guest binding, as binding of electron-rich guests in the cage cavities involves specific hydrogen-bonding interactions with the cage interior surface at the *fac* tris-chelate sites.

Acknowledgements

We thank the funding agencies that have supported this work (EPSRC, Leverhulme Trust) and the numerous talented co-workers whose efforts made this possible; their names appear in the reference list.

References

- 1 C. J. Pedersen, *Angew. Chem., Int. Ed. Engl.*, 1988, **27**, 1021.
- 2 (a) D. Fiedler, D. H. Leung, R. G. Bergman and K. N. Raymond, *Acc. Chem. Res.*, 2005, **38**, 349; (b) M. Fujita, M. Tominaga, A. Hori and B. Therrien, *Acc. Chem. Res.*, 2005, **38**, 369; (c) M. D. Ward, *Chem. Commun.*, 2009, 4487; (d) R. Chakrabarty, P. S. Mukherjee and P. J. Stang, *Chem. Rev.*, 2011, **111**, 6810; (e) T. R. Cook and P. J. Stang, *Chem. Rev.*, 2015, **115**, 7001; (f) M. D. Pluth, R. G. Bergman and K. N. Raymond, *Acc. Chem. Res.*, 2009, **42**, 1650; (g) M. M. J. Smulders, I. A. Riddell, C. Browne and J. R. Nitschke, *Chem. Soc. Rev.*, 2013, **42**, 1728; (h) H. Amouri, C. Desmaretts and J. Moussa, *Chem. Rev.*, 2012, **112**, 2015; (i) L. Li, D. J. Fanna, N. D. Shepherd, L. F. Lindoy and F. Li, *J. Inclusion Phenom. Macrocyclic Chem.*, 2015, **82**, 3; (j) L. Chen, Q. Chen, M. Wu, F. Jiang and M. Hong, *Acc. Chem. Res.*, 2015, **48**, 201; (k) H. Li, Z.-J. Yao, D. Liu and G.-X. Jin, *Coord. Chem. Rev.*, 2015, **293**, 139.



- 3 M. D. Ward and P. R. Raithby, *Chem. Soc. Rev.*, 2013, **42**, 1619.
- 4 (a) O. Chepelin, J. Ujma, X. Wu, A. M. Z. Slawin, M. B. Pitak, S. J. Coles, J. Michel, A. C. Jones, P. E. Barran and P. J. Lusby, *J. Am. Chem. Soc.*, 2012, **134**, 19334; (b) K.-I. Yamashita, M. Kawano and M. Fujita, *Chem. Commun.*, 2007, 4102; (c) S. Roche, C. Haslam, H. Adams, S. L. Heath and J. A. Thomas, *Chem. Commun.*, 1998, 1681; (d) J. Yang, M. Bhadbade, W. A. Donald, H. Iranmanesh, E. G. Moore, H. Yan and J. E. Beves, *Chem. Commun.*, 2015, **51**, 4465.
- 5 (a) J. S. Fleming, K. L. V. Mann, C. A. Carraz, E. Psillakis, J. C. Jeffery, J. A. McCleverty and M. D. Ward, *Angew. Chem., Int. Ed.*, 1998, **37**, 1279; (b) R. L. Paul, Z. R. Bell, J. C. Jeffery, J. A. McCleverty and M. D. Ward, *Proc. Natl. Acad. Sci. U. S. A.*, 2002, **99**, 4883; (c) A. Stephenson, S. P. Argent, T. Riis-Johannessen, I. S. Tidmarsh and M. D. Ward, *J. Am. Chem. Soc.*, 2011, **133**, 858.
- 6 B. R. Hall, L. E. Manck, I. S. Tidmarsh, A. Stephenson, B. F. Taylor, E. J. Blaikie, D. A. Vander Griend and M. D. Ward, *Dalton Trans.*, 2011, **40**, 12132.
- 7 (a) I. S. Tidmarsh, T. B. Faust, H. Adams, L. P. Harding, L. Russo, W. Clegg and M. D. Ward, *J. Am. Chem. Soc.*, 2008, **130**, 15167; (b) A. M. Najar, C. Avci and M. D. Ward, *Inorg. Chem. Commun.*, 2012, **15**, 126.
- 8 S. L. Dabb and N. C. Fletcher, *Dalton Trans.*, 2015, **44**, 4406.
- 9 R. L. Paul, S. P. Argent, J. C. Jeffery, L. P. Harding, J. M. Lynam and M. D. Ward, *Dalton Trans.*, 2004, 3453.
- 10 (a) Z. R. Bell, J. C. Jeffery, J. A. McCleverty and M. D. Ward, *Angew. Chem., Int. Ed.*, 2002, **41**, 2515; (b) S. P. Argent, H. Adams, T. Riis-Johannessen, J. C. Jeffery, L. P. Harding, O. Mamula and M. D. Ward, *Inorg. Chem.*, 2006, **45**, 3905.
- 11 I. A. Riddell, Y. R. Hristova, J. K. Clegg, C. S. Wood, B. Breiner and J. R. Nitschke, *J. Am. Chem. Soc.*, 2013, **135**, 2723.
- 12 D. L. Caulder, C. Bruckner, R. E. Powers, S. Konig, T. N. Parac, J. A. Leary and K. N. Raymond, *J. Am. Chem. Soc.*, 2001, **123**, 8923.
- 13 P. Mal, B. Breiner, K. Rissanen and J. R. Nitschke, *Science*, 2009, **324**, 1697.
- 14 (a) C. R. K. Glasson, G. V. Meehan, J. K. Clegg, L. F. Lindoy, P. Turner, M. B. Duriska and R. Willis, *Chem. Commun.*, 2008, 1190; (b) R. Custelcean, J. Bosano, P. V. Bonnesen, V. Kertesz and B. P. Hay, *Angew. Chem., Int. Ed.*, 2009, **48**, 4025.
- 15 (a) I. A. Riddell, M. M. J. Smulders, J. K. Clegg, Y. R. Hristova, B. Breiner, J. D. Thoburn and J. R. Nitschke, *Nat. Chem.*, 2012, **4**, 860; (b) R. A. Bilbeisi, T. K. Ronson and J. R. Nitschke, *Angew. Chem., Int. Ed.*, 2013, **52**, 9027.
- 16 S. Turega, M. Whitehead, B. R. Hall, M. F. Haddow, C. A. Hunter and M. D. Ward, *Chem. Commun.*, 2012, **48**, 2752.
- 17 S. Turega, M. Whitehead, B. R. Hall, A. J. H. M. Meijer, C. A. Hunter and M. D. Ward, *Inorg. Chem.*, 2013, **52**, 1122.
- 18 S. Mecozzi and J. Rebek, *Chem. – Eur. J.*, 1998, **4**, 1016.
- 19 C. A. Hunter, *Angew. Chem., Int. Ed.*, 2004, **43**, 5310.
- 20 (a) W. Cullen, M. C. Misuraca, C. A. Hunter, N. H. Williams and M. D. Ward, *Nat. Chem.*, 2016, **8**, 231; (b) C. G. P. Taylor, J. R. Piper and M. D. Ward, *Chem. Commun.*, 2016, **52**, 6225; (c) S. Turega, W. Cullen, M. Whitehead, C. A. Hunter and M. D. Ward, *J. Am. Chem. Soc.*, 2014, **136**, 8475; (d) W. Cullen, S. Turega, C. A. Hunter and M. D. Ward, *Chem. Sci.*, 2015, **6**, 625.
- 21 T. Riis-Johannessen, N. Dupont, G. Canard, G. Bernardinelli, A. Hauser and C. Piguet, *Dalton Trans.*, 2008, 3661.
- 22 (a) N. C. Fletcher, R. T. Brown and A. P. Doherty, *Inorg. Chem.*, 2006, **45**, 6132; (b) N. C. Fletcher, M. Nieuwenhuyzen and S. Rainey, *J. Chem. Soc., Dalton Trans.*, 2001, 2641; (c) R. T. Brown, N. C. Fletcher, M. Nieuwenhuyzen and T. E. Keyes, *Inorg. Chim. Acta*, 2005, **358**, 1079.
- 23 M. H. W. Lam, S. T. C. Cheung, K. M. Fung and W. T. Wong, *Inorg. Chem.*, 1997, **36**, 4618.
- 24 A. J. Metherell, W. Cullen, A. Stephenson, C. A. Hunter and M. D. Ward, *Dalton Trans.*, 2014, **43**, 71.
- 25 X. K. Sun, D. W. Johnson, D. L. Caulder, K. N. Raymond and E. H. Wong, *J. Am. Chem. Soc.*, 2001, **123**, 2752.
- 26 A. J. Metherell and M. D. Ward, *RSC Adv.*, 2013, **3**, 14281.
- 27 H. B. Wu and Q. M. Wang, *Angew. Chem., Int. Ed.*, 2009, **48**, 7343.
- 28 S. Hiraoka, Y. Sakata and M. Shionoya, *J. Am. Chem. Soc.*, 2008, **130**, 10058.
- 29 M. Wang, V. Vajpayee, S. Shanmugaraju, Y.-R. Zheng, Z. Zhao, H. Kim, P. S. Mukherjee, K.-W. Chi and P. J. Stang, *Inorg. Chem.*, 2011, **50**, 1506.
- 30 G. Kumar and R. Gupta, *Chem. Soc. Rev.*, 2013, **42**, 9403.
- 31 (a) M. M. J. Smulders, A. Jimenez and J. R. Nitschke, *Angew. Chem., Int. Ed.*, 2012, **51**, 6681; (b) M. L. Saha and M. Schmittel, *J. Am. Chem. Soc.*, 2013, **135**, 17743; (c) F. Reichel, J. K. Clegg, K. Gloe, K. Gloe, J. J. Weigand, J. K. Reynolds, C.-G. Li, J. R. Aldrich-Wright, C. J. Kepert, L. F. Lindoy, H.-C. Yao and F. Li, *Inorg. Chem.*, 2014, **53**, 688; (d) I. S. Tidmarsh, H. Fenton and M. D. Ward, *Dalton Trans.*, 2010, **39**, 3805.
- 32 J. A. Thomas, *Chem. Soc. Rev.*, 2007, **36**, 856.
- 33 (a) M. Otte, P. F. Kuijpers, O. Troeppner, I. Ivanovic-Burmazovic, J. N. H. Reek and B. de Bruin, *Chem. – Eur. J.*, 2013, **19**, 10170; (b) P. Ballester, M. Claudel, S. Durot, L. Kocher, L. Schoepff and V. Heitz, *Chem. – Eur. J.*, 2015, **21**, 15339; (c) W. Meng, B. Breiner, K. Rissanen, J. D. Thoburn, J. K. Clegg and J. R. Nitschke, *Angew. Chem., Int. Ed.*, 2011, **50**, 3479; (d) T. Nakamura, H. Ube, M. Shiro and M. Shionoya, *Angew. Chem., Int. Ed.*, 2013, **52**, 720; (e) K. Li, L.-Y. Zhang, C. Yan, S.-C. Wei, M. Pan, L. Zhang and C.-Y. Su, *J. Am. Chem. Soc.*, 2014, **136**, 4456; (f) M. D. Wise, J. J. Holstein, P. Pattison, C. Besnard, E. Solari, R. Scopelliti, G. Bricogne and K. Severin, *Chem. Sci.*, 2015, **6**, 1004.
- 34 (a) S. Rigault, C. Piguet, G. Bernardinelli and G. Hopfgartner, *Angew. Chem., Int. Ed.*, 1998, **37**, 169; (b) P. R. Symmers, M. J. Burke, D. P. August,



- P. I. T. Thomson, G. S. Nichol, M. R. Warren, C. J. Campbell and P. J. Lusby, *Chem. Sci.*, 2015, **6**, 756.
- 35 A. J. Metherell and M. D. Ward, *Chem. Commun.*, 2014, **50**, 6330.
- 36 A. B. Wragg, A. J. Metherell, W. Cullen and M. D. Ward, *Dalton Trans.*, 2015, **44**, 17939.
- 37 L. De Cola, V. Balzani, F. Barigelletti, L. Flamigni, P. Belser, A. Von Zelewsky, M. Frank and F. Vögtle, *Inorg. Chem.*, 1993, **32**, 5228.
- 38 C. T. Lin and N. Sutin, *J. Phys. Chem.*, 1976, **80**, 97.
- 39 S. P. Argent, H. Adams, T. Riis-Johannessen, J. C. Jeffery, L. P. Harding and M. D. Ward, *J. Am. Chem. Soc.*, 2006, **128**, 72.
- 40 A. Stephenson, D. Sykes and M. D. Ward, *Dalton Trans.*, 2013, **42**, 6756.
- 41 S. P. Argent, H. Adams, L. P. Harding, T. Riis-Johannessen, J. C. Jeffery and M. D. Ward, *New J. Chem.*, 2005, **29**, 904.
- 42 A. J. Metherell and M. D. Ward, *Chem. Commun.*, 2014, **50**, 10979.
- 43 A. J. Metherell and M. D. Ward, *Chem. Sci.*, 2016, **7**, 910.
- 44 J. M. Lehn and A. V. Eliseev, *Science*, 2001, **291**, 2331.

