



Zhang, B., Chu, S., Agarwal, P., Campbell, V. L., Hopcroft, L., Jørgensen, H. G., Lin, A., Gaal, K., Holyoake, T. L. and Bhatia, R. (2016) Inhibition of interleukin-1 signaling enhances elimination of tyrosine kinase inhibitor treated CML stem cells. *Blood*, 128(23), pp. 2671-2682.
(doi:[10.1182/blood-2015-11-679928](https://doi.org/10.1182/blood-2015-11-679928))

This is the author's final accepted version.

There may be differences between this version and the published version. You are advised to consult the publisher's version if you wish to cite from it.

<http://eprints.gla.ac.uk/123758/>

Deposited on: 05 September 2016

Enlighten – Research publications by members of the University of Glasgow
<http://eprints.gla.ac.uk>

Inhibition of Interleukin-1 Signaling Enhances Elimination of Tyrosine Kinase Inhibitor Treated CML Stem Cells

Bin Zhang¹, Su Chu², Puneet Agarwal², Victoria L Campbell³, Lisa Hopcroft³, Heather G Jørgensen³, Allen Lin¹, Karl Gaal⁴, Tessa L Holyoake³, Ravi Bhatia²

¹Gehr Family Center for Leukemia Research, Hematologic Malignancies and Stem Cell Transplantation Institute, City of Hope National Medical Center, Duarte, CA; ²Division of Hematology-Oncology, University of Alabama at Birmingham, Birmingham, AL; ³College of Medical, Veterinary & Life Sciences, Institute of Cancer Sciences, University of Glasgow, Scotland, UK; ⁴Department of Pathology, City of Hope National Medical Center, Duarte, CA

Running title: Targeting IL-1 signaling in CML stem cells

Word count=3996

Address correspondence to:

Ravi Bhatia, MD
Division of Hematology-Oncology
University of Alabama at Birmingham
Birmingham, AL 35223
1802 6th Avenue, South, North Pavilion, Room 2555C
Birmingham, AL 35294
Tel: (205) 934-9591
Fax: (205) 996-5975
Email: rbhatia@uabmc.edu

Abstract

Treatment of chronic myelogenous leukemia (CML) with BCR-ABL tyrosine kinase inhibitors (TKI) fails to eliminate leukemia stem cells (LSC). Patients remain at risk for relapse, and additional approaches to deplete CML LSC are needed to enhance the possibility of discontinuing TKI treatment. We have previously reported that expression of the pivotal pro-inflammatory cytokine interleukin-1 (IL-1) is increased in CML bone marrow (BM). We show here that CML LSC demonstrated increased expression of the IL-1 receptors, IL-1RAP and IL-1R1, and enhanced sensitivity to IL-1-induced NF- κ B signaling compared to normal stem cells. Treatment with recombinant IL-1 receptor antagonist (IL-1RA) inhibited IL-1 signaling in CML LSC and inhibited growth of CML LSC. Importantly, the combination of IL-1RA with TKI resulted in significantly greater inhibition of CML LSC compared with TKI alone. Our studies also suggest that IL-1 signaling contributes to overexpression of inflammatory mediators in CML LSC, suggesting that blocking IL-1 signaling could modulate the inflammatory milieu. We conclude that IL-1 signaling contributes to maintenance of CML LSC following TKI treatment, and that IL-1 blockade with IL-1RA enhances elimination of TKI-treated CML LSC. These results provide a strong rationale for further exploration of anti-IL-1 strategies to enhance LSC elimination in CML.

Highlights

- CML LSC demonstrate increased IL-1 receptor expression and enhanced signaling response
- Inhibition of IL-1 signaling using the antagonist IL-1RA enhances targeting of CML LSC in combination with TKI

Introduction

Chronic myelogenous leukemia (CML) results from hematopoietic stem cell (HSC) transformation by the BCR-ABL kinase.¹ CML is characterized by a myeloproliferative disorder that progresses from initial chronic phase (CP) to accelerated phase (AP) and terminal blast crisis (BC). BCR-ABL tyrosine kinase inhibitors (TKI) are remarkably effective in inducing remissions, preventing transformation to BC, and prolonging survival of CML patients.² However TKI treatment fails to eliminate CML leukemia stem cells (LSC), even in patients achieving deep molecular responses.³ Although a subset of CML CP patients are able to maintain remission after stopping TKIs, most patients require continued treatment to prevent relapse.^{4,5} The risks of prolonged treatment include toxicity, and considerable cost, which may affect adherence to treatment.⁶ Improved understanding of LSC resistance to TKI could help guide development of strategies to increase the proportion of CML patients achieving treatment-free remissions.

We have studied LSC in CML using primary blood and bone marrow (BM) samples from CP CML patients, as well as an inducible transgenic mouse model of CML in which *BCR-ABL* is expressed under control of a Tet-regulated 3' enhancer of the murine stem cell leukemia (SCL) gene.⁷ Since *in vivo* characterization of human CML CP LSC in immunodeficient mice is limited by low levels of engraftment and lack of leukemia development, the transgenic mouse model has proven very useful to study CML LSC regulation and therapeutic strategies.⁸ We have found that leukemia-induced alterations in the BM microenvironment provide a competitive advantage to CML compared with normal long-term HSC (LTHSC). ELISA assays demonstrate increased expression of the pivotal pro-inflammatory cytokines IL-1 α and IL-1 β in the BM of *BCR-ABL* mice. IL-1 α and IL-1 β significantly increased growth of CML compared to normal LTHSC. BM cells from CML patients also demonstrated increased expression of IL-1 α , but not IL-1 β , compared to normal BM cells. IL-1 α significantly increased expansion of CML compared to

normal CD34+CD38- cells. Interestingly IL-1 α expression remained elevated in BM from CML patients in long-term remission on imatinib treatment.⁹

IL-1 signals through the IL-1 receptor Type I (IL1-RI) and IL-1 receptor accessory protein (IL-1RAP, IL-1R3) and activates the NF- κ B, JNK, and p38 MAPK pathways. IL-1 signaling is enhanced in certain tumors, and associated with aggressive phenotype.¹⁰ Jaras et al. observed that IL-1RAP is selectively overexpressed in Philadelphia-positive (Ph+) CML stem cells, and that an anti-IL-1RAP antibody could target CML CD34+CD38- cells via antibody-dependent cell-mediated cytotoxicity.¹¹ However, the role of IL-1 signaling in TKI resistance of CML LSC is not known, and it is not known whether inhibiting IL-1 signaling could enhance elimination of CML LSC. IL-1 receptor antagonist (IL-1RA) is a member of the IL-1 cytokine family that binds non-productively to **IL-1R1**, preventing IL-1 α and IL-1 β signaling. Recombinant human IL-1RA (Anakinra, Kinaret) is clinically approved for the treatment of rheumatoid arthritis.¹² Here we evaluated the role of IL-1 signaling in CML LSC using IL-1RA, and studied its ability to modulate their sensitivity to TKI treatment.

Methods

Mice: SCL-tTA/*BCR-ABL* mice in the CD45.1 FVB/N background (Huettnner et al., 2005) were maintained on tetracycline. Recipient mice were in the CD45.2 FVBN background (kind gift from Dr Emmanuelle Passegue, UCSF). CD45.1 SCL-tTA/*BCR-ABL* mice crossbred with CD45.2 mice to generate CD45.1.2 SCL-tTA/*BCR-ABL* mice were used as recipients for one experiment. Mouse care and experimental procedures followed federal guidelines and protocols were approved by the Institutional Animal Care and Use Committee at the City of Hope.

Samples: Cord blood (CB) samples were provided by StemCyte (Arcadia, CA). Aliquots of normal peripheral blood (PB) and BM mononuclear cells (MNC) were obtained from transplant donors. CML BM samples were obtained from patients in CP who had not received TKI treatment from City of Hope and the University of Glasgow. Sample acquisition was approved by the Institutional Review Boards (IRB) at City of Hope and the North Glasgow University Hospital Division of NHS Greater Glasgow and Clyde in accordance with the Declaration of Helsinki. All donors signed informed consent forms. MNC were isolated using Ficoll separation. CD34+ cells were isolated using magnetic bead selection protocol (Miltenyi).

Conditioned medium: To make conditioned medium (CM), 20 million fresh human or murine CML or normal MNCs were cultured in 10ml StemSpan™ Serum-Free Expansion Medium (SFEM) for 24 hours and the supernatant collected as CM.

In vivo treatment of transgenic *BCR-ABL* mice: BM cells from *BCR-ABL* mice (CD45.1) were transplanted by tail vein into CD45.2 recipient mice (2×10^6 cells/mouse) irradiated at 900 cGy. Blood samples were obtained after 4 weeks to confirm development of neutrophilic leukocytosis. Mice were treated with NIL (Novartis, Basel, Switzerland) (50mg/kg/day, oral gavage), IL-1RA (Anakinra, Sobi, Stockholm, Sweden) (150mg/kg/day, s.c.), NIL+IL-1RA, or vehicle for 3 weeks, euthanized, and PB, BM and spleen cells obtained. The IL-1RA dose was based on prior reports indicating that this dose inhibited IL-1 effects in mice.¹³ Donor derived CD45.1+ myeloid,

progenitor and stem cell populations were measured by flow cytometry. Long-term hematopoietic stem cells (LTHSC, LSK Flt3⁻CD150⁺CD48⁻), multipotent progenitors (MPP, LSK Flt3⁻CD150⁻CD48⁻, LSK Flt3⁻CD150⁺CD48⁺, LSK Flt3⁻CD150⁻CD48⁺), common myeloid progenitors, (CMP, Lin⁻Sca-1⁻c-Kit⁺CD34⁺Fc RII/III^{lo}), and granulocyte-macrophage progenitors (GMP, Lin⁻Sca-1⁻c-Kit⁺CD34⁺Fc RII/III^{hi}) were identified using flow cytometry. Pooled BM cells from treated mice were transplanted into CD45.2 mice (2×10⁶ cells/mouse). Engraftment in PB was monitored every 4 weeks. The fraction of mice developing leukemia, manifested by neutrophilic leukocytosis, within 16 weeks was determined and survival was monitored. Another cohort of mice was treated with NIL or NIL+IL-1RA for 4 weeks, and monitored for survival after treatment discontinuation.

In vitro proliferation, apoptosis, colony forming assays: Human CD34⁺ cells were labeled with 1.25μM CFSE (Molecular Probes, Eugene, OR) and antibodies, and flow cytometry sorted to collect CD34⁺CD38⁻ and CD34⁺CD38⁺ cells with uniform CFSE labeling.¹⁴ Cells were cultured with human normal or CML BM CM with IL-1RA (5μg/mL), NIL (5μM) or the combination for 72 hours. Cell numbers were measured by Lumino Glo (Promega). To measure apoptosis and proliferation, cells were labeled with Annexin V (BD, San Diego, CA) and analyzed by flow cytometry for Annexin V and CFSE fluorescence.¹⁴ ModFit software (Verity, Topsham, ME) was used to assess the different cell generations and proliferation index. For colony-forming cell (CFC) assays, cells were plated in methylcellulose progenitor culture burst-forming units-erythroid and colony-forming units-granulocyte and macrophage counted after 14 days. Colony replating assays were performed by collecting and pooling colonies from primary CFC assays and plating 10,000 cells in secondary CFC assays.

Engraftment of human cells in immunodeficient mice: CML CD34⁺ cells (1×10⁶ cells/mouse) or CB CD34⁺ cells (1×10⁵ cells/mouse) were cultured in CML CM for 72 hours with NIL (5μM), IL-1RA (5μg/mL), or the combination, and transplanted via tail vein into sublethally irradiated (300 cGy) 8 weeks old NOD.Cg-Prkdc^{scid} IL2rg^{tm1Wjl}/SzJ mice (NSG mice, The Jackson

Laboratory, Bar Harbor, ME). Mice were euthanized after 4 or 16 weeks, and BM and blood cells obtained at necropsy. Human CD45 expressing cells were enumerated by flow cytometry. Q-PCR analysis was performed using primer and probe sequences for BCR-ABL (B3A2 or B2A2) (Branford et al., 1999). Human BCR levels were measured as internal controls.

IL-1 receptor and signaling assays: IL-1 receptor Type I (IL1-RI, R&D Systems, cat: FAB269A) and IL-1 receptor accessory protein (IL-1RAP, R&D systems, cat: FAB676P) expression was measured by flow cytometry. To assess IL-1 signaling, CD34+ cells from CB, normal BM and CML BM were cultured in SFEM with IL-1 α (10 ng/mL, Peprotech, cat: 200-01A), or in CML or normal BM CM, for 16 hours and p-NF- κ B (p65) (BD, cat: 558422), p-p38 MAPK (BD, cat: 612594) and p-JNK (BD, cat: 562480) expression measured by flow cytometry. To measure effects of IL-1RA and NIL, CML Lin-CD34+CD38-CD90+ cells were cultured in CML BM CM with IL-1RA (5 μ g/ml), NIL (5 μ M) or the combination for 24 hours. Cells were analyzed by flow cytometry for p-CrkL (Cell signaling, cat: 3181), p-NF- κ B, p-p38 MAPK and p-JNK expression. Results were expressed as ratio of median channel fluorescence (MCF) to isotype controls.

RT-Q-PCR analysis: Human CML BM CD34+CD38-CD90+ cells were cultured in CML CM with IL-1RA (5 μ g/ml), NIL (5 μ M) or the combination for 24 hours. RNA was extracted and first strand cDNA synthesized from 200 cells, pre-amplified for 18 cycles, and multiplex RT-Q-PCR performed using TaqMan Assays (Thermo Fisher Scientific, Waltham, MA, Table 1) and the Fluidigm Biomark system. Results were expressed as ratio to β 2m.

Analysis of microarray data: Data were obtained from GEO (GSE12211) and normalized using affy::rma in R.¹⁵ Differential expression was calculated using LIMMA, using a paired-sample design. Gene annotations were obtained from hgu133a2.db library in R. Gene set enrichment analysis (GSEA) was performed using GSEA software (Broad Institute).

Immunofluorescence analysis: CML CD34+CD38-CD90+ cells cultured in CML CM with NIL (5 μ M), IL-1RA (5 μ g/mL), or the combination for 24 hours were spun onto glass slides. Cells

were fixed with 4% paraformaldehyde, permeabilized with 0.1% Triton X-100, and incubated with RelA/NF kappa B p65 antibody (MAB5078, R&D Systems), and FITC-conjugated anti-mouse secondary antibodies. Slides were examined using a Zeiss upright LSM 510 2-photon confocal microscope.

Enzyme-linked immunosorbant assays (ELISA): ELISA was performed, using R&D Systems human IL-1 α Quantikine ELISA kit (DLA50), according to the manufacturer's protocol.

Statistics: Data were reported as the mean \pm SEM. Student's t-test, and one or two-way ANOVA with multiple testing were performed to determine statistical significance, as appropriate. $P < 0.05$ was considered statistically significant.

Results

IL-1RA inhibits growth of murine CML stem cells

We have previously shown that CML LTHSC have a significant growth advantage over normal LTHSC when cultured in CML compared to normal BM CM.⁹ To evaluate the role of IL-1 within CML BM CM in regulating CML LTHSC growth, LTHSC from SCL-tTA/BCR-ABL mice (CD45.1) were mixed in a 1:1 ratio with LTHSC from congenic FVBN mice (CD45.2), and cultured for 7 days with CML BM CM with and without IL-1RA to block IL-1 receptor signaling. The ratio of CML to normal LTHSC was significantly decreased by IL-1RA (Figure 1A), indicating that IL-1RA reduced the growth advantage of CML LTHSC.

To analyze effects of IL-1RA on *in vivo* growth of CML LSC, BM cells from SCL-tTA/BCR-ABL and congenic FVBN mice were mixed in a 1:1 ratio and transplanted into irradiated BCR-ABL recipient mice (CD45.1.2). BCR-ABL expression was induced in recipient mice for 4 weeks prior to transplant, to generate leukemia-related changes in the BM microenvironment. Mice were treated with IL-1RA or vehicle. The ratio of CML to normal cells was significantly reduced in PB of IL-1RA-treated compared with control mice after 4 weeks (Figure 1B). Subsequent withdrawal of IL-1RA resulted in return of CML to normal cell ratios to levels similar to controls.

IL-1RA enhances elimination of murine CML stem cells treated with nilotinib (NIL)

To test the effect of IL-1RA by itself and in combination with NIL on CML LTHSC *in vivo*, BM cells from SCL-tTA/BCR-ABL mice (CD45.1) were transplanted into congenic FVBN mice (CD45.2) to generate a cohort of mice with CML-like disease. This approach allows generation of a large number of mice with similar time of onset of leukemia, facilitating studies of therapeutic interventions against CML stem cells.⁸ Following CML development 4 weeks after transplantation, mice were treated with IL-1RA, NIL, or the combination for 3 weeks. WBC

counts were reduced after treatment with IL-1RA, NIL and the combination (Figure 1C). IL-1RA and the IL-1RA plus NIL combination reduced spleen cellularity (Figure 1D). The combination of NIL and IL-1RA significantly reduced the percentage of engraftment of CD45.1+ CML cells in PB (Figure 1E), BM (Figure 1F) and spleen (Figure 1G), and further reduced CML engraftment in BM, but not in blood and spleen, compared to NIL alone. IL-1RA or NIL alone did not reduce CML BM LTHSC (Figure 1H) and MPP (Figure 1I), whereas the combination of IL-1RA and NIL significantly reduced CML LTHSC and MPP compared to controls and NIL alone. Finally, IL-1RA, NIL and the combination did not reduce CML CMP (Figure 1J) and GMP (Figure 1K) in the BM. IL-1RA did not significantly affect the number of CML LTHSC (Figure S1A), CMP (Figure S1C) and GMP (Figure S1D) in the spleen, although MPPs (Figure S1B) were reduced. NIL and the combination of NIL plus IL-1RA did not affect LTHSC, but significantly reduced MPP, CMP and GMP in the spleen of CML mice (Figure S1A-D). **Thus combination treatment results in enhanced inhibition of BM cells, particularly stem and progenitor populations, but does not significantly inhibit mature cells in blood and spleen or splenic LTHSC.**

Secondary transplantation of BM cells from CML mice (CD45.1) treated with NIL plus IL-1RA into wild -type recipient mice (CD45.2) was associated with significantly reduced WBC counts (Figure 2A), reduced percentage of CML cell engraftment (Figure 2B), reduced leukemia development (Figure 2C), and significantly prolonged survival, compared to untreated controls (Figure 2D). Mice treated with NIL or the combination of NIL and IL-1RA for 4 weeks were also followed for survival. Mice treated with both IL-1RA and NIL showed markedly improved survival after stopping treatment (Figure 2E). These results indicate that addition of IL-1RA to NIL enhances inhibition of BM LSC capable of engrafting secondary recipients and causing disease relapse.

IL-1RA inhibits growth of human CML stem cells treated with NIL

To study the effect of IL-1RA on human CML stem and progenitor cells, CML and normal CD34+CD38- stem/progenitor cells and CD34+CD38+ committed progenitors were cultured in CML BM CM and exposed to NIL (5 μ M), IL-1RA (5 μ g/mL) or NIL+IL-1RA for 72 hours. A dose-response analysis showed that the IL-1RA concentration used achieved maximal *in vitro* inhibitory effects (Figure S2A). IL-1RA significantly inhibited CML CD34+CD38- cell growth (Figure 3A), cell division (Figure 3B, E) and CFC frequency (Figure 3C), and increased apoptosis (Figure 3D, E), compared with NIL or IL-1RA alone. The combination of NIL and IL-1RA also significantly reduced CML CD34+CD38+ cell growth (Figure S2B), cell division (Figure S2C) and CFC frequency (Figure S2D), but did not change apoptosis, compared with NIL alone (Figure S2E). The combination of IL-1RA and NIL significantly inhibited replating capacity of CML CFC compared to controls and NIL alone (Figure 3F). In contrast, no significant inhibition of cell growth, cell division and CFC frequency, or increase in apoptosis, was seen in normal CD34+CD38- (Figure 3A-D) or CD34+CD38+ cells (Figure S2B-E) treated with NIL, IL-1RA, or the combination.

To test effects on *in vivo* engraftment, CML and normal CD34+ cells were treated with IL-1RA, NIL, or IL-1RA plus NIL for 72 hours and transplanted into NSG mice. IL-1RA plus NIL treatment reduced short-term (4 weeks, Figure 3G) and long-term (16 weeks, Figure 3H) engraftment in BM, compared with no treatment, or IL-1RA or NIL alone. IL-1RA, NIL and IL-1RA plus NIL all resulted in significant reduction of BCR-ABL+ cells in BM at 16 weeks, assessed by RT-Q-PCR analysis, compared with untreated controls (Figure 3I). **The observed reduction in human cell engraftment taken together with the similar BCR-ABL levels indicates that leukemic cell engraftment is reduced with combination treatment compared to NIL alone.** IL-1RA, NIL or the combination did not significantly affect engraftment of CB CD34+ cells in PB of NSG mice at 4 weeks (Figure S2F), and in PB (Figure S2G), or BM (Figure S2H) at 16 weeks, compared with untreated controls. Taken together these results indicate that IL-1RA when combined with NIL selectively and effectively targets primitive CML cells that resist elimination with NIL alone.

Increased IL-1 receptor expression in CML LSC

We studied expression of the IL-1 receptor components, IL-1 receptor-associated protein (IL-1RAP) and IL-1R1, on human CML and normal CD34⁺CD38⁻CD90⁺ stem cells and CD34⁺ progenitor cells (Figure S3A). Consistent with previous reports, IL-1RAP was expressed on CML but not normal stem cell populations (Figure 4A).¹¹ We also observed a significant increase of IL-1R1 expression on CML stem cells (Figure 4B). Expression of IL-1RAP and IL-1R1 was also increased on CML compared with normal CD34⁺ cells (Figure S3B, C). We evaluated IL-1 α and IL-1 β levels in PB from CML CP patients and healthy controls by ELISA. IL-1 α but not IL-1 β expression was enhanced in several CML patients, and average IL-1 α levels were increased compared to normal PB (Figure 4C). Exposure to IL-1 α did not affect the expression of IL-1R1 and IL-1RAP on human CML stem cells (Figure 4D), and reduced IL-1RAP expression in murine CML stem cells (Figure S3D). Exposure to human CML or normal BM CM did not affect the expression of IL-1R1 and IL-1RAP on CML (Figure 4E) or normal (Figure 4F) stem cells.

We studied the effect of TKI treatment on IL-1R1 and IL-1RAP expression using data from Bruennert et al analyzing changes in the transcriptome of CD34⁺ cells from CML patients after 7 days of imatinib treatment.¹⁶ We observed that IL-1 receptor expression in CML progenitors was not changed after TKI treatment (Figure 4G).

IL-1RA and NIL inhibit inflammatory signaling in CML LSC

IL-1 α signals through the NF- κ B, p38-MAPK and p-JNK pathways.¹⁷ Exposure to IL-1 α increased expression of p-NF- κ B (p65) (Figure 5A), p-p38 MAPK (Figure 5B) and p-JNK (Figure 5C) in CML, but not normal stem cells, as evaluated by flow cytometry. IL-1 α also increased expression of p-NF- κ B (p65) (Figure S4A) and p-p38 MAPK (Figure S4B), but not p-JNK (Figure S4C), in CML but not normal CD34⁺ cells. Exposure to IL-1 α also increased expression of p-

p38 MAPK and p-JNK in murine CML stem cells (Figure S4D). These results indicate that CML stem cells demonstrate an enhanced signaling response to IL-1 stimulation. CML stem cells demonstrated enhanced NF- κ B activity (Figure 5D), no change in p-p38 activity (Figure 5E), and enhanced p-JNK activity (Figure 5F) after exposure to CML compared to normal BM CM. On the other hand CML or normal CM did not increase NF- κ B, p-p38 or p-JNK signaling in normal stem cells (Figure 5G-I).

We evaluated the effect of IL-1RA, NIL or the combination on p-NF- κ B (p65), p-p38 MAPK and p-JNK expression in CML LSC cultured in CML BM CM. Significant reduction of p-NF- κ B levels was seen with IL-1RA or NIL alone, with further reduction with the combination (Figure 6A). Treatment with IL-1RA or NIL alone significantly inhibited p-p38 MAPK levels (Figure 6B), but did not inhibit p-JNK levels (Figure 6C). The combination of IL-1RA and NIL significantly reduced both p-p38 MAPK and p-JNK expression. **Our results indicate that combination treatment results in additional inhibition of NF- κ B signaling, but not P38 MAPK or JNK signaling compared to NIL alone** (Figures 6B, 6C, and S4F). Similar effects were seen in CML CD34+ cells (Figure S4E-G). Expression of p-CrkL was reduced in CML stem cells (Figure 6D) and CD34+ cells (Figure S4H) treated with NIL, indicating effective BCR-ABL kinase inhibition. Immunofluorescence analysis showed reduced expression of both nuclear and cytoplasmic NF- κ B p65 in CML stem cells treated with IL-1RA compared with controls (Figure 6E). NIL treatment also resulted in reduction in NF- κ B levels, with maximal reduction seen with the combination of IL-1RA and NIL. GSEA analysis also indicated significant inhibition of NF- κ B related genes in CD34+ cells from CML patients treated with imatinib for 7 days, compared to untreated patients (Figure S4I). RT-Q-PCR analysis showed that NIL treatment reduced expression of the NF- κ B target genes BCL2L1 but not NFKB1A and BIRC3. On the other hand, treatment with IL-1RA and the combination of NIL and IL-1RA resulted in significant reduction in NFKB1A (Figure 7A), BCL2L1 (Figure 7B), and BIRC3 (Figure 7C), indicating additional effects of IL-1 inhibition on NF- κ B signaling in CML stem cells beyond those seen with TKI treatment.

Since NF- κ B signaling can enhance expression of several inflammatory cytokines, we evaluated the effects of IL-1RA and NIL on cytokine gene expression in CML LSC.¹⁷ Q-RT-PCR analysis revealed reduced expression of IL-1 α , but not IL-1 β , with IL-1RA treatment (Figure 7D, E), and reduced expression of IL-6 (Figure 7F), CXCL1 (Figure 7G), CCL2 (Figure 7I), CCL3 (Figure 7J), CCL4 (Figure 7K) and TNF- α (Figure 7L) with IL-1RA and IL-1RA plus NIL, compared to controls. NIL treatment reduced expression of IL-6 (Figure 7F), CXCL2 (Figure 7H), and TNF- α (Figure 7L), but not other cytokines. These observations suggest that blocking IL-1 signaling modulates expression of inflammatory mediators in CML cells.

Discussion

IL-1 receptors are expressed in HSC during fetal development and regulate their differentiation.^{18,19} IL1R-deleted adult mice do not show defects in steady-state hematopoiesis.²⁰ The studies of Ågerstam et al. (manuscript cosubmitted to Blood) confirm that IL-1RAP is dispensable for normal HSC function, even under conditions of hematopoietic stress. However, chronic IL-1 exposure can drive myeloid differentiation, and chronic exposure leads to reduced HSC self-renewal²¹. Consistent with previous reports, we observed that CML LTHSC demonstrated upregulated IL-1RAP expression.¹¹ Our studies and those of Agerstam et al. show that CML LSC also demonstrated increased expression of the co-receptor IL-1R1. Increased expression of the IL-1 receptor complex may explain enhanced IL-1 responsiveness in CML LSC. IL-1RAP is also expressed in stem cells from patients with acute myeloid leukemia (AML), raising the possibility of similar activity in this leukemia.^{22,23}

IL-1 is a primary regulator of inflammatory and innate immune responses. IL-1 receptor engagement initiates a complex sequence of phosphorylation and ubiquitination events resulting in activation of the NF- κ B, JNK and p38 MAPK pathways, and rapid increase in expression of a large number of immediate early genes central to the inflammatory response.¹⁷ Canonical IL-1 target genes include cytokines such as IL-6, IL-8, TNF- α , MCP-1, IL-1 α , IL-1 β , and MKP-1. The intracellular components that participate in IL-1 signaling also mediate responses to other cytokines. For example, autocrine TNF- α production by CML stem/progenitor cells also supports their survival by promoting NF- κ B/p65 activation.²⁴ Although other cytokines overexpressed in the CML BM microenvironment could have redundant effects, the observation that IL-1RA effectively inhibits downstream signaling through NF- κ B, supports a central regulatory role of IL-1. Indeed IL-1 inhibition diminishes expression of several other cytokines in CML LSC.

IL-1 signaling is regulated at the level of synthesis and release, membrane receptors, and intracellular signal transduction. Both increased IL-1 levels in the CML BM microenvironment,

and increased receptor expression may play a role in enhanced signaling in CML LSC. BCR-ABL kinase mediated modulation of intracellular signaling mechanisms could also contribute to increased IL-1 responsiveness. NF- κ B is activated through the canonical IKK pathway in BCR-ABL+ cells, and contributes to the pathogenesis of myeloid and lymphoid leukemia.^{25,26} IL-1 stimulation induces miR-146a expression, which acts as a negative feed-back regulator of IL-1 signaling by inhibiting the IRAK1 and TRAF6 genes.^{27,28} Our recent studies show that miR-146a is downregulated in CML CD34+ cells, potentially contributing to increased IL-1 signaling.²⁹ Further evaluation of this mechanism is warranted in future studies. The studies of Agerstam et al., and our own analyses, show that IL-1 receptor expression on CML LSC is not reduced by BCR-ABL kinase inhibition. Agerstam et al. further show that TKI-treated CML stem cells maintain signaling responses to IL-1 stimulation. This is consistent with our results showing that treatment with TKI inhibits NF- κ B signaling in CML LSC, but that even greater inhibition is seen after addition of IL-1RA.

Our data suggests that microenvironmental IL-1 mediated signaling contributes to resistance of CML LSC to TKI. IL-1RA had modest effects on CML stem cell maintenance by itself in the context of active BCR-ABL signaling, but when combined with NIL resulted in significantly enhanced inhibition of CML stem cells compared with NIL alone. Currently, only a small fraction of TKI-treated CML patients can maintain treatment-free remissions (TFR) after discontinuing treatment.³⁰ Our studies support further exploration of the use of IL-1 blockade as a potential strategy to enhance LSC targeting in patients receiving TKI treatment to increase the likelihood of achieving TFR. Anakinra has been extensively used to treat rheumatoid arthritis, and has been well tolerated with an excellent safety profile, making it an attractive candidate for further evaluation.³¹ Other strategies to limit IL-1 activity approved for treating chronic inflammatory diseases include neutralizing antibodies to IL-1 β and a soluble receptor for IL-1.¹² Importantly, the companion paper by Agerstam al. also shows that antibodies against IL-1RAP reduce leukemia in an *in vivo* model of CP CML. In conclusion, our studies reveal a role for IL-1

mediated inflammatory signaling in maintenance of CML LSC in TKI-treated CML patients, and support targeting of this mechanism as a strategy to enhance LSC elimination in combination with TKI.

Author contributions

BZ designed and performed experiments, analyzed and interpreted data, wrote manuscript; SC designed and performed experiments, analyzed and interpreted data, wrote manuscript; PA designed and performed experiments, VLC designed and performed experiments; LH analyzed and interpreted data; HGJ designed and performed experiments, AL obtained samples, provided data; KG reviewed slides, TLH provided samples, designed research, interpreted data, edited manuscript, RB designed research, analyzed and interpreted data, wrote manuscript.

Acknowledgements

This work was supported by NIH NCI grants R01 CA172447, the Glasgow Experimental Cancer Medicine Centre (ECMC), Bloodwise grant 14033, and CR-UK program grant C1107/A11008. VLC is supported by the Wellcome Trust, the Scottish Translational Medicine and Therapeutics Initiative (Grant no. WT 085664), and by Clinical Research Fellowship Number 099710/X/12/Z. We acknowledge the support of the COH analytical cytometry core and surgical pathology core. We thank StemCyte for CB samples, Linda Seymour and Vincent Paterno for sample acquisition, and Tinisha McDonald and Yinwei Ho for technical assistance.

Conflict of interest disclosure: None.

Table 1. Gene expression assays used for RT-Q-PCR

NFκB1α	Hs00355671_g1
BCL2L1	Hs00236329_m1
BIRC3	Hs00985031_g1
IL-1α	Hs00174092_m1
IL-1β	<i>Hs00174097_m1</i>
IL-6	Hs00985639_m1
CXCL1(KC)	Hs00236937_m1
CXCL2(MIP2)	Hs00601975_m1
CCL2 (MCP-1)	Hs00234140_m1
CCL3 (MIP-1-alpha)	Hs00234142_m1
CCL4 (MIP-1-beta)	Hs99999148_m1
TNF-α	Hs01113624_g1
IL-17	Hs00174383_m1
CD83	Hs00188486_m1
β2M	<i>Hs00187842_m1</i>

References

1. Sawyers CL. Chronic myeloid leukemia. *N Engl J Med*. 1999;340(17):1330-1340.
2. Cortes J, Hochhaus A, Hughes T, Kantarjian H. Front-Line and Salvage Therapies With Tyrosine Kinase Inhibitors and Other Treatments in Chronic Myeloid Leukemia. *J Clin Oncol*. 2011.
3. Chu S, McDonald T, Lin A, et al. Persistence of leukemia stem cells in chronic myelogenous leukemia patients in prolonged remission with imatinib treatment. *Blood*. 2011.
4. Mahon FX, Rea D, Guilhot J, et al. Discontinuation of imatinib in patients with chronic myeloid leukaemia who have maintained complete molecular remission for at least 2 years: the prospective, multicentre Stop Imatinib (STIM) trial. *Lancet Oncol*. 2010;11(11):1029-1035.
5. Ross DM, Branford S, Seymour JF, et al. Safety and efficacy of imatinib cessation for CML patients with stable undetectable minimal residual disease: results from the TWISTER study. *Blood*. 2013;122(4):515-522.
6. Dusetzina SB, Winn AN, Abel GA, Huskamp HA, Keating NL. Cost sharing and adherence to tyrosine kinase inhibitors for patients with chronic myeloid leukemia. *J Clin Oncol*. 2014;32(4):306-311.
7. Koschmieder S, Gottgens B, Zhang P, et al. Inducible chronic phase of myeloid leukemia with expansion of hematopoietic stem cells in a transgenic model of BCR-ABL leukemogenesis. *Blood*. 2005;105(1):324-334.
8. Zhang B, Strauss AC, Chu S, et al. Effective targeting of quiescent chronic myelogenous leukemia stem cells by histone deacetylase inhibitors in combination with imatinib mesylate. *Cancer Cell*. 2010;17(5):427-442.
9. Zhang B, Ho YW, Huang Q, et al. Altered microenvironmental regulation of leukemic and normal stem cells in chronic myelogenous leukemia. *Cancer Cell*. 2012;21(4):577-592.
10. Rodriguez-Berriguete G, Sanchez-Espiridon B, Cansino JR, et al. Clinical significance of both tumor and stromal expression of components of the IL-1 and TNF-alpha signaling pathways in prostate cancer. *Cytokine*. 2013;64(2):555-563.
11. Jaras M, Johnels P, Hansen N, et al. Isolation and killing of candidate chronic myeloid leukemia stem cells by antibody targeting of IL-1 receptor accessory protein. *Proc Natl Acad Sci U S A*. 2010;107(37):16280-16285.
12. Dinarello CA. Blocking IL-1 in systemic inflammation. *J Exp Med*. 2005;201(9):1355-1359.
13. Meissner F, Molawi K, Zychlinsky A. Mutant superoxide dismutase 1-induced IL-1beta accelerates ALS pathogenesis. *Proc Natl Acad Sci U S A*. 2010;107(29):13046-13050.
14. Holtz MS, Slovak ML, Zhang F, Sawyers CL, Forman SJ, Bhatia R. Imatinib mesylate (STI571) inhibits growth of primitive malignant progenitors in chronic myelogenous leukemia through reversal of abnormally increased proliferation. *Blood*. 2002;99(10):3792-3800.
15. Ritchie ME, Phipson B, Wu D, et al. limma powers differential expression analyses for RNA-sequencing and microarray studies. *Nucleic Acids Res*. 2015;43(7):e47.
16. Bruennert D, Czibere A, Bruns I, et al. Early in vivo changes of the transcriptome in Philadelphia chromosome-positive CD34+ cells from patients with chronic myelogenous leukaemia following imatinib therapy. *Leukemia*. 2009;23(5):983-985.
17. Weber A, Wasiliew P, Kracht M. Interleukin-1 (IL-1) pathway. *Sci Signal*. 2010;3(105):cm1.
18. Orelia C, Peeters M, Haak E, van der Horn K, Dzierzak E. Interleukin-1 regulates hematopoietic progenitor and stem cells in the midgestation mouse fetal liver. *Haematologica*. 2009;94(4):462-469.
19. Orelia C, Haak E, Peeters M, Dzierzak E. Interleukin-1-mediated hematopoietic cell regulation in the aorta-gonad-mesonephros region of the mouse embryo. *Blood*. 2008;112(13):4895-4904.
20. Horai R, Asano M, Sudo K, et al. Production of mice deficient in genes for interleukin (IL)-1alpha, IL-1beta, IL-1alpha/beta, and IL-1 receptor antagonist shows that IL-1beta is crucial in turpentine-induced fever development and glucocorticoid secretion. *J Exp Med*. 1998;187(9):1463-1475.

21. Pietras EM, Mirantes-Barbeito C, Fong S, et al. Chronic interleukin-1 exposure drives haematopoietic stem cells towards precocious myeloid differentiation at the expense of self-renewal. *Nat Cell Biol.* 2016.
22. Barreyro L, Will B, Bartholdy B, et al. Overexpression of IL-1 receptor accessory protein in stem and progenitor cells and outcome correlation in AML and MDS. *Blood.* 2012;120(6):1290-1298.
23. Askmyr M, Agerstam H, Hansen N, et al. Selective killing of candidate AML stem cells by antibody targeting of IL1RAP. *Blood.* 2013;121(18):3709-3713.
24. Gallipoli P, Pellicano F, Morrison H, et al. Autocrine TNF-alpha production supports CML stem and progenitor cell survival and enhances their proliferation. *Blood.* 2013;122(19):3335-3339.
25. Reuther JY, Reuther GW, Cortez D, Pendergast AM, Baldwin AS, Jr. A requirement for NF-kappaB activation in Bcr-Abl-mediated transformation. *Genes Dev.* 1998;12(7):968-981.
26. Hsieh MY, Van Etten RA. IKK-dependent activation of NF-kappaB contributes to myeloid and lymphoid leukemogenesis by BCR-ABL1. *Blood.* 2014;123(15):2401-2411.
27. Zhao JL, Rao DS, Boldin MP, Taganov KD, O'Connell RM, Baltimore D. NF-kappaB dysregulation in microRNA-146a-deficient mice drives the development of myeloid malignancies. *Proc Natl Acad Sci U S A.* 2011;108(22):9184-9189.
28. Taganov KD, Boldin MP, Chang KJ, Baltimore D. NF-kappaB-dependent induction of microRNA miR-146, an inhibitor targeted to signaling proteins of innate immune responses. *Proc Natl Acad Sci U S A.* 2006;103(33):12481-12486.
29. Wang LS, Li L, Li L, et al. MicroRNA-486 regulates normal erythropoiesis and enhances growth and modulates drug response in CML progenitors. *Blood.* 2015;125(8):1302-1313.
30. Rousselot P, Charbonnier A, Cony-Makhoul P, et al. Loss of major molecular response as a trigger for restarting tyrosine kinase inhibitor therapy in patients with chronic-phase chronic myelogenous leukemia who have stopped imatinib after durable undetectable disease. *J Clin Oncol.* 2014;32(5):424-430.
31. Fleischmann RM, Tesser J, Schiff MH, et al. Safety of extended treatment with anakinra in patients with rheumatoid arthritis. *Ann Rheum Dis.* 2006;65(8):1006-1012.

Figures and figure legends

Figure 1. IL-1RA inhibits growth of murine CML stem cells and enhances elimination of CML stem cells in combination with Nilotinib. CML (CD45.1) and normal (CD45.2) LTHSC were mixed with in a 1:1 ratio and cultured in **murine** CML BM CM with or without IL-1RA (2.5µg/ml) for 7 days. The ratio of CD45.1+ to CD45.2+ cells is shown (**A**). BM cells from CML (CD45.1) and control (CD45.2) mice were mixed in a 1:1 ratio and transplanted into irradiated CML recipient mice (CD45.1.2). The recipient mice were treated with or without IL-1RA (150mg/kg/d, s.c.) for 4 weeks. The ratio of CML to control cells is shown in (**B**). BM cells from BCR-ABL mice (CD45.1) were transplanted by tail vein injection (2×10^6 cells/mouse) into recipient mice (CD45.2). Mice were treated with IL-1RA (150mg/kg/day, s.c.), NIL (50mg/kg/day, oral gavage), IL-1RA+NIL, or vehicle for 3 weeks (n=10 each). PB WBC count (**C**); spleen weight (**D**); percentage CD45.1+ cells in PB (**E**), BM (**F**) and spleen (**G**); and number of LTHSC (**H**), MPP (**I**), CMP (**J**) and GMP (**K**) in the BM are shown. Results represent mean±SEM. Significance values: * p<0.05; ** p<0.01; *** p<0.001, 2-way ANOVA.

Figure 2. IL-1RA enhances elimination of CML stem cells in combination with Nilotinib. BM cells from CML mice (CD45.1) treated with IL-1RA alone, NIL alone or IL-1RA in combination with NIL were transplanted into irradiated secondary recipient mice (CD45.2) (n=8 each). White blood cell counts (**A**), percent CD45.1 engraftment in PB (**B**), frequency of the mice developing leukemia (**C**), and survival (**D**) of the secondary recipient mice is shown. Another cohort of mice (n=7 each) was treated with NIL alone or combination of NIL and IL-1RA for 4 weeks following which treatment was stopped and the survival of these mice was shown

(D). Results represent mean±SEM. Significance values: *, p<0.05; **, p<0.01, 2-way ANOVA and log-rank test.

Figure 3. IL-1RA inhibits growth of human CML stem cells in combination with Nilotinib.

Primary human CML and normal CD34+CD38- primitive stem/progenitor cells were cultured in human CML BM CM and exposed to NIL (5µM), IL-1RA (5µg/mL), NIL+IL-1RA, or vehicle for 72 hours. Cell growth (A), cell proliferation (B), CFC (C) and apoptosis (D) was shown. A representative flow cytometry plot showing CFSE and Annexin V labeling is shown (E). CD34+ cells treated with NIL, IL-1RA, and NIL+IL-1RA were plated in CFC assays (left) and after 14 days colonies were harvested and cells resuspended and re-plated in secondary CFC assays (right)(F). CML CD34+ cells treated with IL-1RA, NIL, or IL-1RA in combination with NIL for 72 hours were transplanted into irradiated (300cGy) NSG mice (n=6 each). Engraftment of human CD45+ cells in the BM of NSG mice at 4 weeks (G) and 16 weeks (H) is shown. BCR/ABL expression in the enriched human CD45+ cells in the BM at 16 weeks was measured (I). Results represent mean±SEM. Significance values: *, p<0.05; **, p<0.01; ***, p<0.001, 2-way ANOVA, 1-way ANOVA.

Figure 4. Increased IL-1 receptor expression in CML LSC. IL-1RAP (A) and IL-1R1 (B) expression on human CML and normal CD34+CD38-CD90+ stem cells measured by flow cytometry. IL-1α levels in peripheral blood of CML patients and healthy controls measured by ELISA (C). Effect of human IL-1α exposure on IL-1R1 and IL-1RAP expression in CML stem cells (n=4) (D). Effect of human CML and normal BM CM on IL-1R1 and IL-1RAP expression in CML (n=4) (E) and normal (n=3) (F) stem cells. IL-1R1 and IL1-RAP mRNA expression in CD34+ cells from CML patients after 7 days of imatinib treatment, as measured in microarray analysis, with two separate probes for each gene (G). Results represent mean±SEM. Significance values: *, p<0.05; **, p<0.01, unpaired t-test, 2-way ANOVA.

Figure 5. Increased IL-1 signaling in CML LSC. CML and normal CD34+CD38-CD90+ stem cells were exposed to IL-1 α (10ng/mL) for 16 hours and expression of p-NF- κ B (p65) (**A**), p-p38 MAPK (**B**) and p-JNK (**C**) was measured by flow cytometry. Expression of p-NF- κ B (p65) (**D**), p-p38 MAPK (**E**) and p-JNK (**F**) in CML HSC (n=4) exposed to human CML and normal CM for 16 hours. p- NF- κ B (p65) (**G**), p-p38 MAPK (**H**) and p-JNK (**I**) expression in normal HSC (n=3) exposed to CML and normal CM. Results represent mean \pm SEM. Significance values: *, p<0.05; **, p<0.01; ***, p<0.001, 2-way ANOVA, unpaired t-test.

Figure 6. IL-1RA in combination with Nilotinib inhibits inflammatory signaling in CML LSC. CML LTHSC (Lin-CD34+CD38-CD90+ cells) were cultured in CML BM CM in the presence of IL-1RA, NIL or combination of IL-RA and NIL for 24 hours. The expression of p- NF- κ B p65 (**A**), p38 MAPK (**B**), p-JNK (**C**) and p-Crkl (**D**) by flow cytometry is shown. Nuclear localization of NF- κ B p65 protein in stem cells treated with IL-1RA, NIL or the combination of IL-1RA and NIL was evaluated by immunofluorescence analysis (**E**). Results represent mean \pm SEM. Significance values: *, p<0.05; **, p<0.01; ***, p<0.001, 1-way ANOVA.

Figure 7. IL-1RA in combination with Nilotinib inhibits NF- κ B target gene and cytokine gene expression in CML LSC. Expression of the NF- κ B target genes, NFKB1A (**A**), BCL2L1 (**B**) and BIRC3 (**C**) and the inflammatory cytokines, IL-1 α (**D**), IL-1 β (**E**), IL-6 (**F**), CXCL1 (**G**), CXCL2 (**H**), CCL2 (**I**), CCL3 (**J**), CCL4 (**K**) and TNF- α (**L**) in CML CD34+CD38-CD90+ cells treated with IL-1RA, NIL, or the combination of NIL and IL-1RA was measured by Q-RT-PCR. Results represent mean \pm SEM. Significance values: *, p<0.05; **, p<0.01, paired t-test.

Figure 1

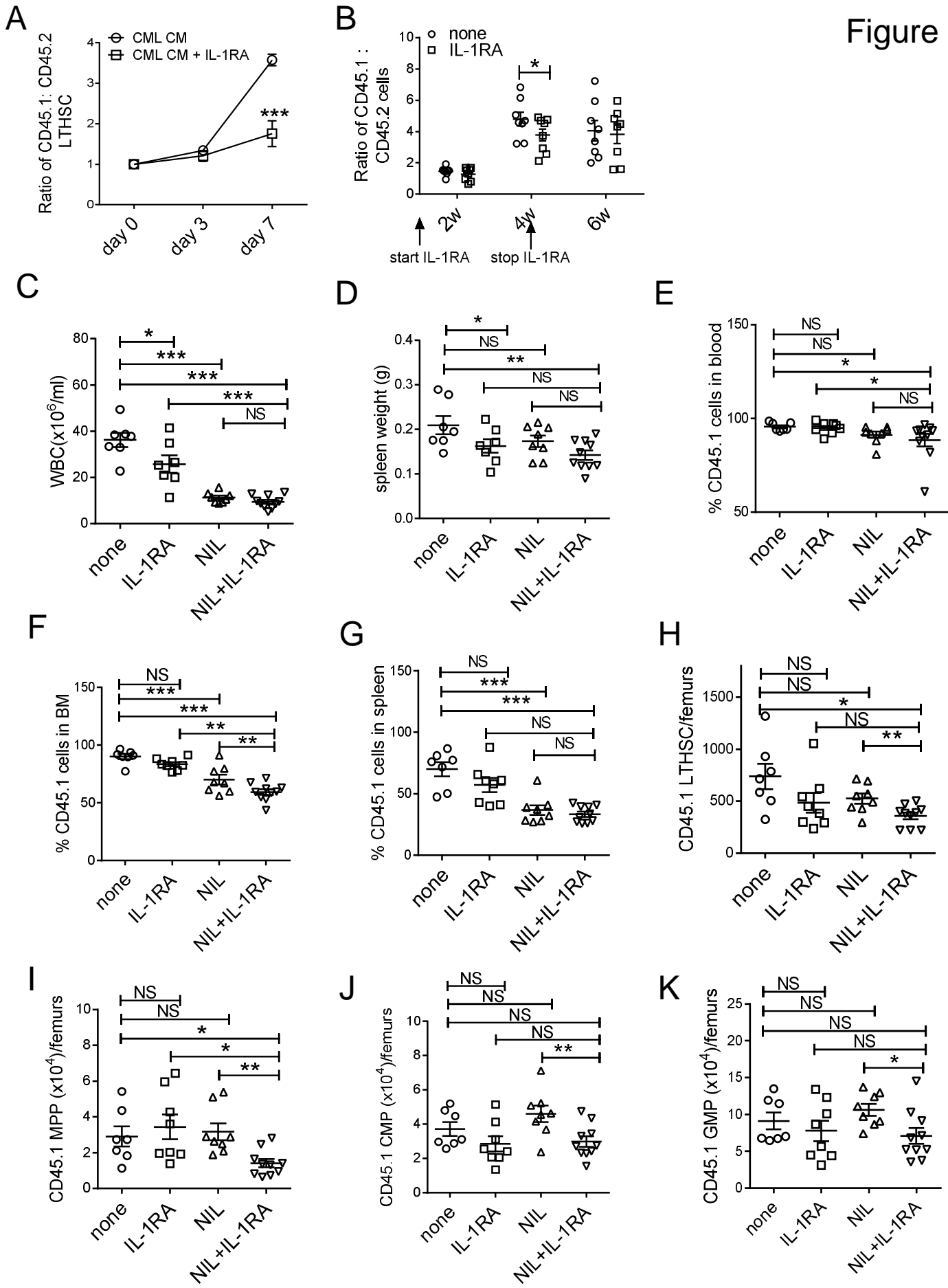


Figure 2

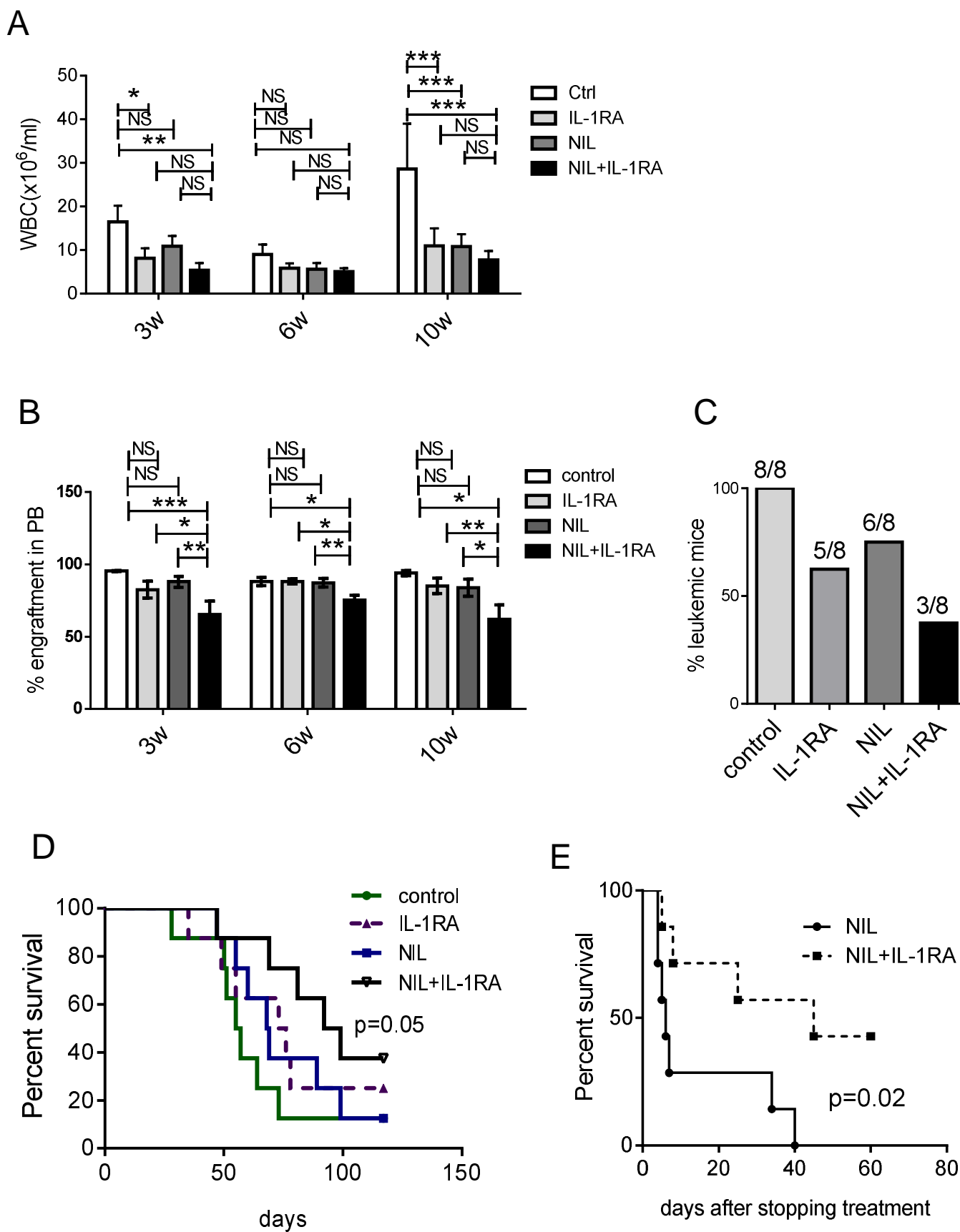
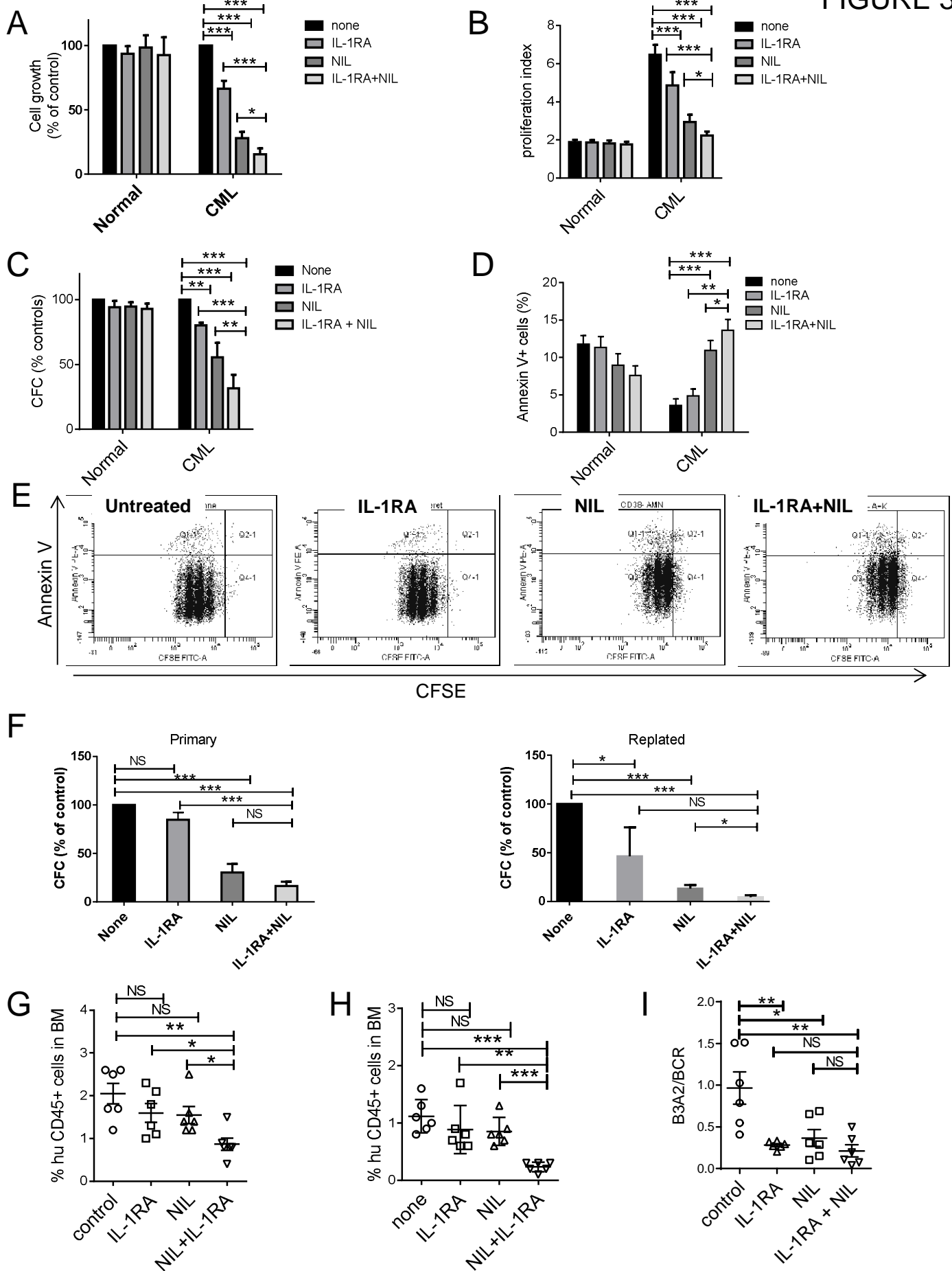


FIGURE 3



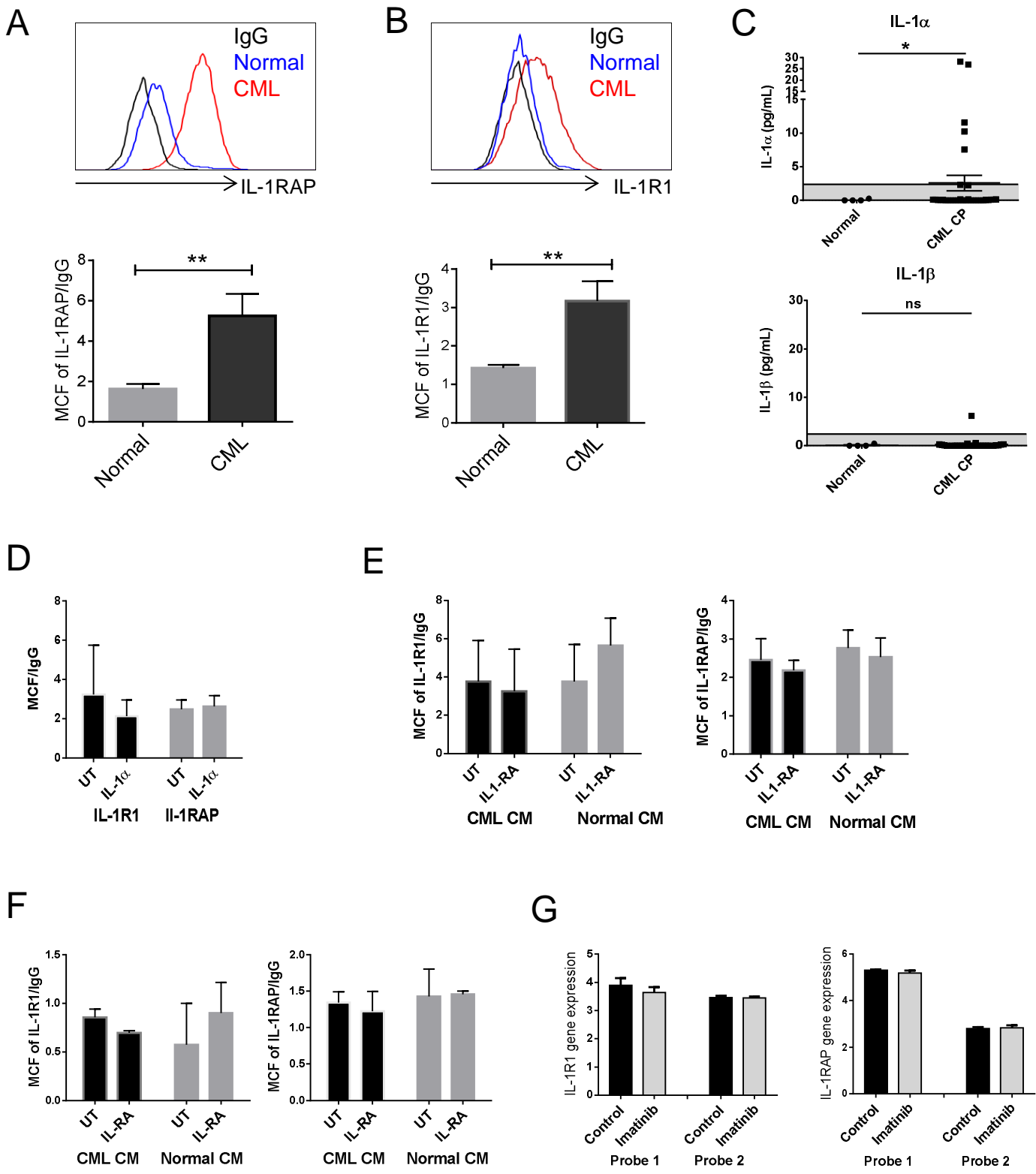
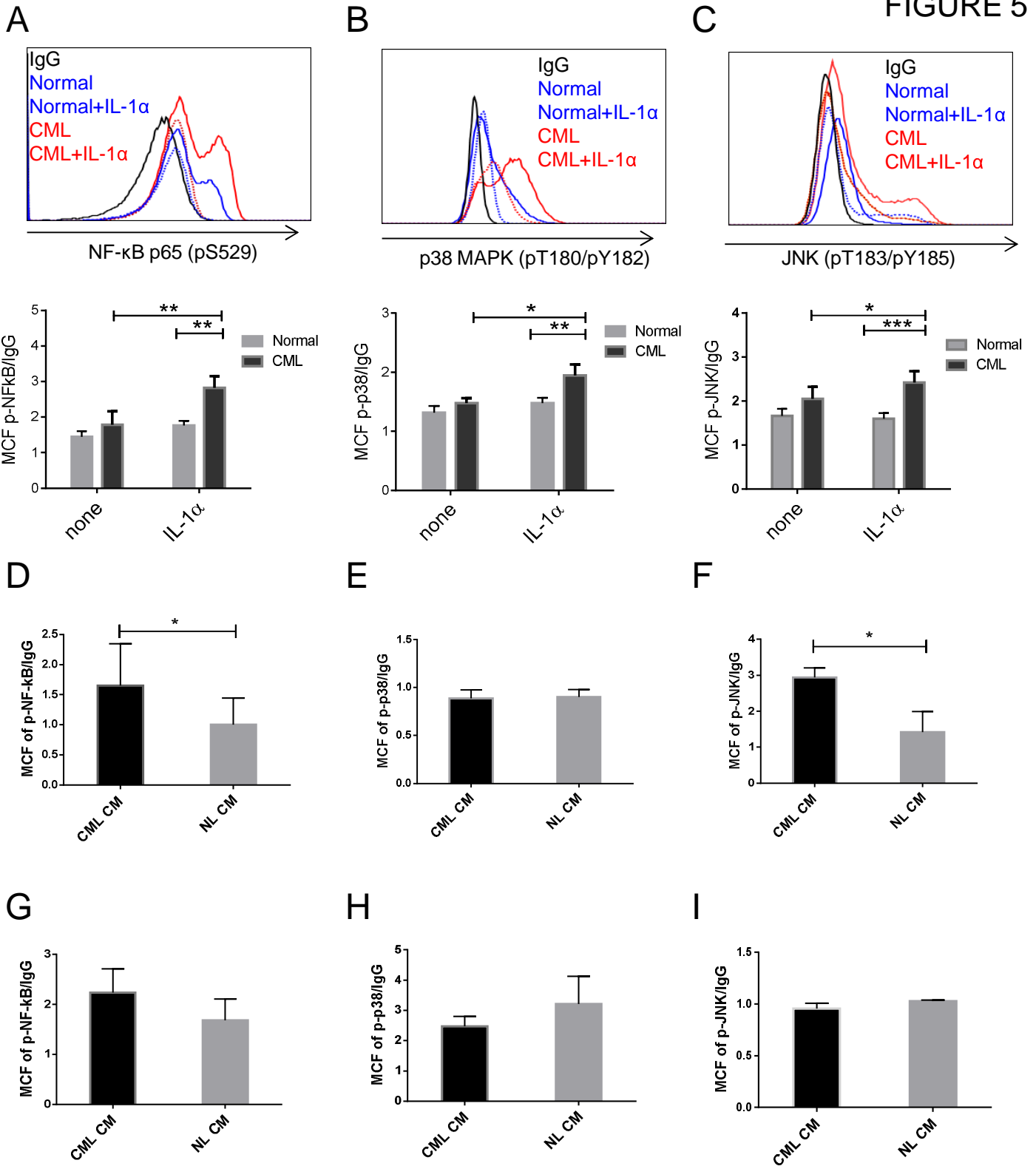


FIGURE 4



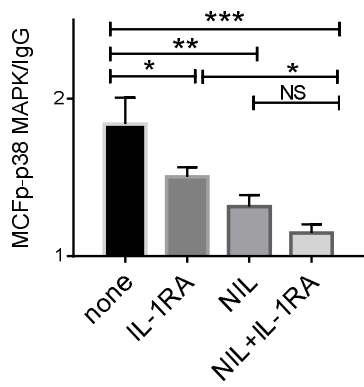
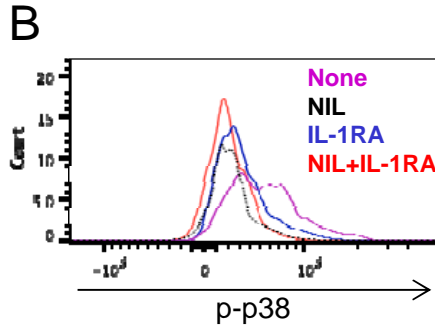
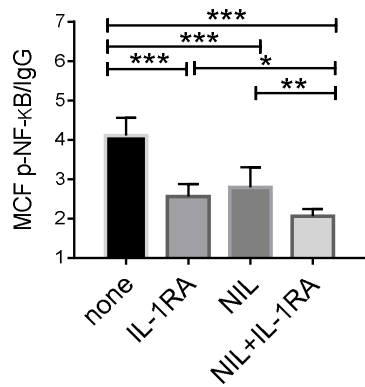
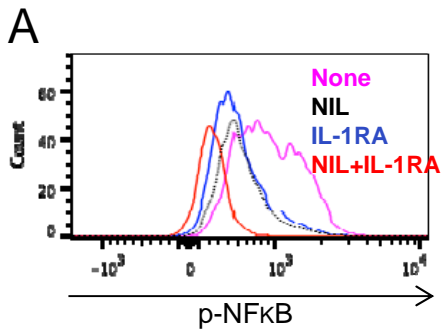


FIGURE 6

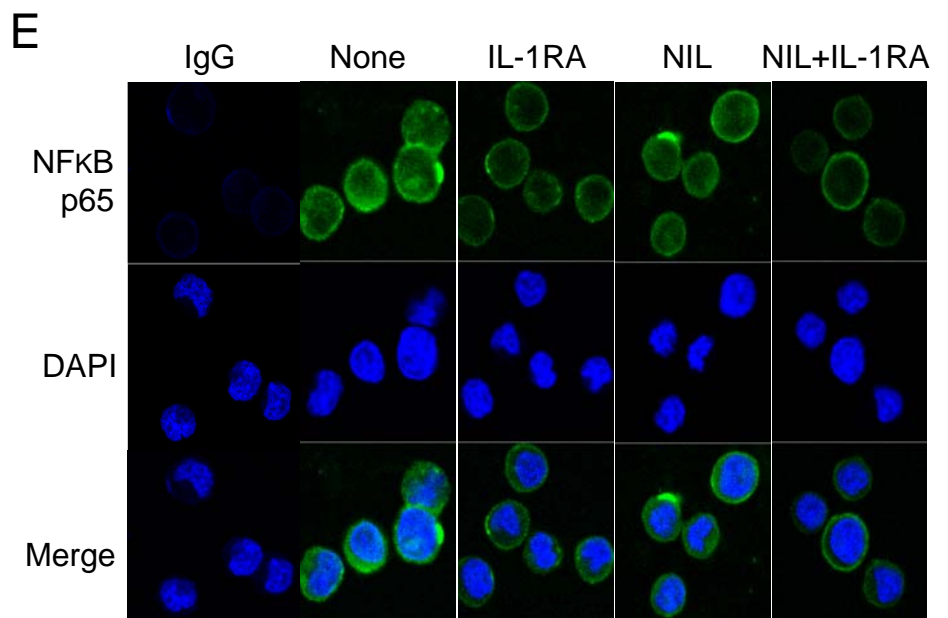
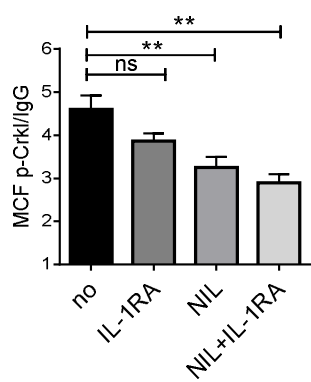
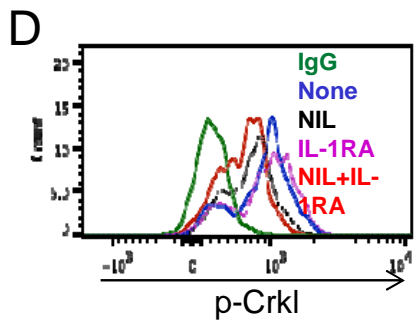
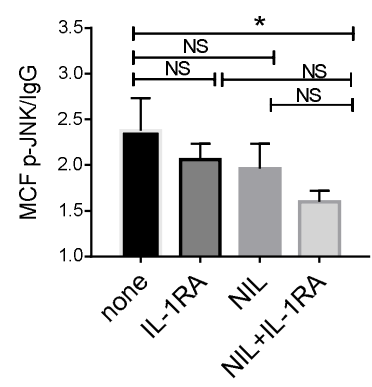
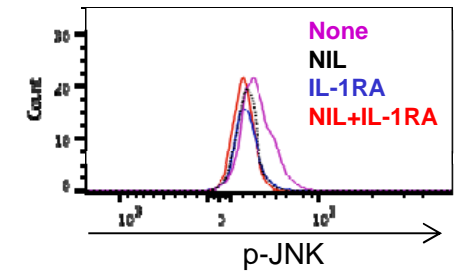


FIGURE 7

