



Okumura, N. et al. (2016) Effects of sacubitril/valsartan in the PARADIGM-HF Trial (Prospective Comparison of ARNI with ACEI to Determine Impact on Global Mortality and Morbidity in Heart Failure) according to background therapy. *Circulation: Heart Failure*, 9(9), e003212. (doi:[10.1161/CIRCHEARTFAILURE.116.003212](https://doi.org/10.1161/CIRCHEARTFAILURE.116.003212))

This is the author's final accepted version.

There may be differences between this version and the published version. You are advised to consult the publisher's version if you wish to cite from it.

<http://eprints.gla.ac.uk/123253/>

Deposited on: 24 August 2016

Title: Effects of sacubitril/valsartan in PARADIGM-HF according to background therapy.

Short title: Sacubitril/valsartan and HF therapy

Authors: Naoki Okumura MD PhD¹
Pardeep S Jhund MBChB MSc PhD¹
Jianjian Gong MD²
Martin P. Lefkowitz MD²
Adel R. Rizkala PharmD²
Jean L. Rouleau MD³
Victor C. Shi MD²
Karl Swedberg MD⁴
Michael R. Zile MD PhD⁵
Scott D. Solomon MD⁶
Milton Packer MD⁷
John JV McMurray MD¹
On behalf of the PARADIGM-HF Investigators and Committees*
* see Supplemental Appendix

Affiliations: ¹BHF Cardiovascular Research Centre, University of Glasgow, Glasgow, UK; ²Novartis Pharmaceutical Corporation, East Hanover NJ, USA; ³Institut de Cardiologie, Université de Montréal, Montréal, Canada; ⁴Department of Molecular and Clinical Medicine, University of Gothenburg, Gothenburg, Sweden and National Heart

and Lung Institute, Imperial College, London; ⁵Medical University of South Carolina and RHJ Department of Veterans Administration Medical Center, Charleston, SC, USA; ⁶Cardiovascular Medicine, Brigham and Women's Hospital, Boston MA, USA; ⁷Baylor Heart and Vascular Institute, Baylor University Medical Center, Dallas, TX, USA.

Correspondence:

Professor John J.V. McMurray,
British Heart Foundation Cardiovascular Research Centre,
University of Glasgow,
126 University Place,
Glasgow, G12 8TA,
United Kingdom.

Tel: +44 141 330 3479

Fax: +44 141 330 6955

Email: john.mcmurray@glasgow.ac.uk

Word count:

Abstract 250 words

Text: 3812 words

Subject codes:

Heart failure, Mortality/Survival, Treatment

ABSTRACT

Background: In PARADIGM-HF, the angiotensin receptor neprilysin inhibitor (ARNI) sacubitril/valsartan was more effective than the ACE-I enalapril, in patients with heart failure and reduced ejection fraction. We examined whether this benefit was consistent irrespective of background therapy.

Methods and Results: We examined the effect of study treatment in the following subgroups: diuretics (yes/no), digitalis glycoside (yes/no), mineralocorticoid receptor antagonist [MRA] (yes/no) and defibrillating device (implanted defibrillating-device, yes/no). We also examined the effect of study drug according to beta-blocker dose ($\geq 50\%$ and $< 50\%$ of target dose) and according to whether or not patients had undergone previous coronary revascularization. We analysed the primary composite endpoint of cardiovascular (CV) death or HF hospitalization, as well as cardiovascular death. Most randomized patients ($n=8399$), were treated with a diuretic (80%) and beta-blocker (93%); 47% of those taking a beta-blocker were treated with $\geq 50\%$ of the recommended dose. In addition, 4671 (56%) were treated with a MRA, 2539 (30%) with digoxin and 1243 (15%) had a defibrillating-device; 2640 (31%) had undergone coronary revascularization. Overall, the sacubitril/valsartan versus enalapril hazard ratio [HR] for the primary composite endpoint was 0.80 (95% CI 0.73-0.87), $P < 0.001$ and for CV death 0.80 (0.71-0.89), $P < 0.001$. The effect of sacubitril/valsartan was consistent across all subgroups examined: the HR for primary endpoint ranged from 0.74 to 0.85 and for CV death from 0.75 to 0.89, with no treatment by subgroup interaction.

Conclusions: The benefit of sacubitril/valsartan, over an ACE inhibitor, was consistent regardless of background therapy and irrespective of prior coronary revascularization or beta-blocker dose.

Clinical Trial Registration: www.clinicaltrials.gov. Identifier: NCT01035255

Keywords: heart failure, sacubitril/valsartan, neprilysin, heart failure therapy

INTRODUCTION

Sacubitril/valsartan (formerly known as LCZ696) is a first-in-class angiotensin receptor neprilysin inhibitor shown to be superior to enalapril in patients with heart failure with reduced ejection fraction (HF-REF).^{1,2} As such, sacubitril/valsartan has been recommended as a more effective alternative to an angiotensin converting enzyme (ACE) inhibitor to be used in conjunction with other evidence-based treatments for this type of heart failure.^{3,4} Of course, it is of interest to know how the effect of sacubitril/valsartan compares with those of enalapril when combined with these other proven therapies. Here we examine outcomes in patients randomly assigned to sacubitril/valsartan, versus enalapril, according to background use of beta-blockers, mineralocorticoid receptor antagonists (MRAs), diuretics, digitalis glycosides implanted cardioverter/defibrillator devices and prior coronary revascularization.⁵⁻¹⁴

METHODS

Patients

The background and results of PARADIGM-HF have been published.¹⁻³ Briefly, PARADIGM-HF was a randomized, double-blind, and prospective comparison of sacubitril/valsartan with enalapril in patients with chronic HF-REF. Eligibility requirements at screening included an age of at least 18 years, New York Heart Association (NYHA) functional class II-IV symptoms, and a left ventricular ejection fraction (LVEF) of 40% or less. Patients were required to be taking an ACE inhibitor or angiotensin receptor blocker (ARB) in a dose equivalent to enalapril 10 mg daily for at least 4 weeks before screening, along with a stable dose of a β -blocker (unless contraindicated or not tolerated) and a mineralocorticoid antagonist (MRA), if indicated. Exclusion criteria included symptomatic hypotension or systolic blood pressure <100 mm Hg at screening or <90 mm Hg at randomization, estimated glomerular filtration rate <30 ml/min/1.73 m², serum potassium >5.2 mmol/l at screening or >5.4 mmol/l at randomization, and unacceptable side effects to ACE inhibitors or ARBs. The trial was approved by the ethics committees at each institution participating in the trial and all patients gave written, informed consent.

Trial outcomes

The primary outcome of PARADIGM-HF was the composite of cardiovascular death or heart failure hospitalization and examination of each component of this composite was pre-specified. In this report we examine the effect of sacubitril/valsartan compared with enalapril on the primary outcome and cardiovascular death

Background treatment subgroups

We examined the effect of sacubitril/valsartan, compared with enalapril according to background pharmacological and device therapy. Subgroups were limited to those greater than 1000 and only

split into two groups to minimise the likelihood of a type 1 error.^{15, 16} Therefore, the groups analysed included diuretics (yes/no), digitalis glycoside (yes/no), MRA (yes/no) and defibrillating device (implantable cardioverter-defibrillator or cardiac resynchronization therapy [CRT] plus defibrillator, yes/no). The subgroups of patients not taking a beta-blocker and without CRT were too small to analyse. We did, however, examine the effect of study drug according to beta-blocker dose, defined as $\geq 50\%$ target dose and $< 50\%$ of target dose. Target daily doses were taken from contemporary guidelines and included: carvedilol 50mg, bisoprolol 10mg, metoprolol succinate 200mg, metoprolol tartrate 200mg, and nebivolol 10mg; patients (n=254) taking other beta-blockers were classified as taking $< 50\%$ target dose. We also examined the effect of study drug according to whether or not patients had undergone previous coronary revascularization, given the evidence that surgical revascularization has beneficial effects on clinical outcomes.

Statistical analysis

The efficacy analyses were performed using a Cox proportional hazards model, including treatment and region. An analysis was performed in each subgroup and a treatment by subgroup interaction was tested. All analyses were performed using Stata version 14 (College Station, TX, USA). A p value < 0.05 was considered statistically significant.

RESULTS

The large majority of patients in PARADIGM-HF were treated with a diuretic (80%) and beta-blocker (93%); 3645 patients (47% of those taking a beta-blocker) were treated with $\geq 50\%$ of a guideline recommended dose of beta-blocker. Of the 8399 patients randomized 4671 (56%) were treated with a MRA, 2539 (30%) with a digitalis glycoside and 1243 (15%) had a defibrillating device in situ. Overall, 2640 (31%) had a history of coronary revascularization.

Figures 1 and 2 show the cumulative incidence of the primary endpoint and of death from cardiovascular causes in each treatment subgroups examined. In each sub-group, the incidence of the primary endpoint in the enalapril group was higher in patients who received the background treatment of interest compared with those who did not. This finding was also observed in patients with prior coronary revascularization, compared with those who did not. The same pattern was observed for cardiovascular death with the exception of prior coronary revascularization. In patients with prior coronary revascularization the pattern was reversed, with a lower risk of death from cardiovascular causes compared with those who had not undergone coronary revascularization. In the case of beta-blockers, those receiving a lower dose had worse outcomes than those taking a higher dose.

Table 1 summarizes the sacubitril/valsartan versus enalapril hazard ratio (HR) for the primary composite outcome of cardiovascular death or heart failure hospitalization, and cardiovascular death alone, according to background therapy. As can be seen, the benefit of sacubitril/valsartan over enalapril was consistent across all treatment subgroups, with no suggestion of a statistically significant interaction between background therapy and treatment effect for either endpoint.

As described in the Methods, we did not examine subgroups with less than one thousand patients because the increased play of chance with small numbers. We did, however, examine the effect of sacubitril/valsartan compared with enalapril according to background beta-blocker dose. The effect of sacubitril/valsartan, versus enalapril, was identical in patients treated with 50% or more of target doses of beta-blockers, compared to those treated with a lower dose (Table 1).

Among patients with a defibrillating device, the effect of sacubitril/valsartan, versus enalapril, on both outcomes analyzed was similar to that in patients without such a device (Table 1).

Lastly, patients with and without prior coronary revascularization also had a similar benefit of sacubitril/valsartan over enalapril (Table 1).

There were a few minor differences in the baseline characteristics between treatment groups within each subgroup, however if corrected for multiple comparisons none are statistically significant (Supplemental Material). The estimate of effect of sacubitril/valsartan on the primary endpoint and CV death was not changed by adjusting for these variables in a multivariable model. (Supplemental Material).

DISCUSSION

PARADIGM-HF was designed to compare sacubitril/valsartan to an ACE inhibitor in a broad spectrum of patients with HF-REF using the target dose of enalapril shown to reduce mortality, when compared to placebo, in the Studies Of Left Ventricular Dysfunction treatment trial (SOLVD-T).⁶ When SOLVD-T was conducted, background therapy consisted mainly of diuretics (85%) and a digitalis glycoside (67%); only 7.7% of patients were treated with a beta-blocker at baseline.

Since the completion of SOLVD-T, digoxin has been shown to reduce the risk of hospital admission for worsening heart failure when added to an ACE inhibitor and, more importantly, other treatments, notably beta-blockers, and MRAs have been shown to reduce both mortality and hospitalization when used incrementally.⁷⁻¹² Implantable cardioverter/defibrillators, which also reduce mortality, are another innovative treatment introduced since the time of SOLVD-T.¹³ Lastly, the use of coronary revascularization has also become more prevalent since the time of SOLVD-T (31% of patients in PARADIGM-HF had undergone this compared with 21% patients in SOLVD-T) and has recently been shown to improve long-term survival in patients with HF-REF and obstructive epicardial coronary artery disease.¹⁴ Consequently, it is important to examine whether sacubitril/valsartan, proposed as a more effective alternative to an ACE inhibitor, had a consistent benefit over enalapril irrespective of contemporary background therapy. We have clearly shown that this is the case with respect to digitalis glycosides and MRAs. Because beta-blockers were used in the vast majority of patients we could not carry out a meaningful analysis of the effects of sacubitril/valsartan in individuals not receiving this treatment. We did, however, examine the effect of sacubitril/valsartan according to beta-blocker dose and found the benefit over enalapril was consistent irrespective of dose category. The

findings were similar for patients with and without an implanted defibrillating device and also for patients who had previously undergone coronary revascularization.

In each treatment sub-group, the incidence of the primary endpoint was higher in patients who received the treatment of interest compared with those who did not, likely reflecting confounding by indication i.e. that these additional therapies were used in patients with more advanced heart failure (e.g. a severely and persistently reduced LVEF) or with comorbidities associated with worse outcomes (e.g. atrial fibrillation). The same was largely true for cardiovascular death with two exceptions. The rates of cardiovascular death were similar irrespective of defibrillating-device status, although there were relatively few events in those with such devices and limited power to show a difference between patients with and without a device. In patients with prior coronary revascularization, the rate of cardiovascular death was lower than in those without prior revascularization (i.e. the converse of what was seen for the primary endpoint). This may be a chance finding, reflect confounding by indication (surgery is more likely to be undertaken in healthier patients) or a powerful effect of revascularization on survival but not hospital admission. In the case of beta-blockers, the worse outcomes in those taking a lower dose may reflect confounding (sicker patients unable to tolerate higher doses) or a greater benefit from higher doses.¹⁷

As with all analyses like these, there are limitations. Most of these subgroups were not pre-specified. Despite requiring each subgroup to include at least 1000 patients, such analyses are inherently underpowered. We could not examine the effect of sacubitril/valsartan compared with enalapril in patients receiving other evidence-based therapies.^{18,19} The use of evidence based, guideline directed therapies may have led to confounding by indication and geographic variations in their use may have led to further confounding. However, analyses of the geographic variation in

efficacy of sacubitril/valsartan confirmed that the efficacy of the drug did not vary by geographic region.³ Furthermore, our results were adjusted for geographic region as randomization was stratified by region and further adjustment made no difference to the findings.²⁰ Only 574 patients had a CRT device implanted and both ivabradine and hydralazine combined with isosorbide dinitrate were used very infrequently.

In summary, we found a consistent benefit of sacubitril/valsartan, over an ACE inhibitor, regardless of background therapy, including use of a diuretic, MRA, digoxin and implanted cardiac defibrillator. A similar benefit was also observed in patients with and without prior coronary revascularization and irrespective of beta-blocker dose.

REFERENCES

1. McMurray JJ, Packer M, Desai AS, Gong J, Lefkowitz MP, Rizkala AR, Rouleau J, Shi VC, Solomon SD, Swedberg K, Zile MR; PARADIGM-HF Committees and Investigators. Dual angiotensin receptor and neprilysin inhibition as an alternative to angiotensin-converting enzyme inhibition in patients with chronic systolic heart failure: rationale for and design of the Prospective comparison of ARNI with ACEI to Determine Impact on Global Mortality and morbidity in Heart Failure trial (PARADIGM-HF). *Eur J Heart Fail* 2013; 15: 1062-73.
2. McMurray JJ, Packer M, Desai AS, Gong J, Lefkowitz MP, Rizkala AR, Rouleau JL, Shi VC, Solomon SD, Swedberg K, Zile MR; PARADIGM-HF Investigators and Committees. Angiotensin-neprilysin inhibition versus enalapril in heart failure. *N Engl J Med* 2014; 371: 993-1004.
3. Moe GW, Ezekowitz JA, O'Meara E, Lepage S, Howlett JG, Fremes S, Al-Hesayen A, Heckman GA, Abrams H, Ducharme A, Estrella-Holder E, Grzeslo A, Harkness K, Koshman SL, McDonald M, McKelvie R, Rajda M, Rao V, Swiggum E, Virani S, Zieroth S, Arnold JM, Ashton T, D'Astous M, Chan M, De S, Dorian P, Giannetti N, Haddad H, Isaac DL, Kouz S, Leblanc MH, Liu P, Ross HJ, Sussex B, White M; Canadian Cardiovascular Society. The 2014 Canadian Cardiovascular Society Heart Failure Management Guidelines Focus Update: anemia, biomarkers, and recent therapeutic trial implications. *Can J Cardiol.* 2015; 31: 3-16.
4. Braunwald E. The path to an angiotensin receptor antagonist-neprilysin inhibitor in the treatment of heart failure. *J Am Coll Cardiol.* 2015;65:1029-41.

5. Effects of enalapril on mortality in severe congestive heart failure. Results of the Cooperative North Scandinavian Enalapril Survival Study (CONSENSUS). The CONSENSUS Trial Study Group. *N Engl J Med* 1987; 316: 1429-35.
6. Effect of enalapril on survival in patients with reduced left ventricular ejection fractions and congestive heart failure. The SOLVD Investigators. *N Engl J Med* 1991; 325:293-302.
7. Digitalis Investigation Group. The effect of digoxin on mortality and morbidity in patients with heart failure. *N Engl J Med* 1997;336:525–533.
8. CIBIS-II Investigators and Committees. The Cardiac Insufficiency Bisoprolol Study II (CIBIS-II): A randomised trial. *Lancet* 1999;353:9–13.
9. MERIT-HF Study Group. Effect of metoprolol CR/XL in chronic heart failure: Metoprolol CR/XL Randomised Intervention Trial in Congestive Heart Failure (MERIT-HF). *Lancet* 1999;353:2001–2007.
10. Packer M, Coats AJ, Fowler MB, Katus HA, Krum H, Mohacsi P, Rouleau JL, Tendera M, Castaigne A, Roecker EB, Schultz MK, DeMets DL. Effect of carvedilol on survival in severe chronic heart failure. *N Engl J Med* 2001;344:1651–1658.
11. Pitt B, Zannad F, Remme WJ, Cody R, Castaigne A, Perez A, Palensky J, Wittes J. The effect of spironolactone on morbidity and mortality in patients with severe heart failure. Randomized Aldactone Evaluation Study Investigators. *N Engl J Med* 1999;341:709–717.

12. Zannad F, McMurray JJV, Krum H, Van Veldhuisen DJ, Swedberg K, Shi H, Vincent J, Pocock SJ, Pitt B. Eplerenone in Patients with Systolic Heart Failure and Mild Symptoms. *N Engl J Med* 2011;364:11–21.
13. Bardy GH, Lee KL, Mark DB, Poole JE, Packer DL, Boineau R, Domanski M, Troutman C, Anderson J, Johnson G, McNulty SE, Clapp-Channing N, Davidson-Ray LD, Fraulo ES, Fishbein DP, Luceri RM, Ip JH. Amiodarone or an Implantable Cardioverter–Defibrillator for Congestive Heart Failure. *N Engl J Med* 2005;352:225–237.
14. Velazquez EJ, Lee KL, Deja MA, Jain A, Sopko G, Marchenko A, Ali IS, Pohost G, Gradinac S, Abraham WT, Yii M, Prabhakaran D, Szwed H, Ferrazzi P, Petrie MC, O’Connor CM, Panchavinnin P, She L, Bonow RO, Rankin GR, Jones RH, Rouleau J-L, STICH Investigators. Coronary-artery bypass surgery in patients with left ventricular dysfunction. *N Engl J Med* 2011;364:1607–1616.
15. Brookes ST, Whitely E, Egger M, Smith GD, Mulheran PA, Peters TJ. Subgroup analyses in randomized trials: risks of subgroup-specific analyses; power and sample size for the interaction test. *J Clin Epidemiol.* 2004;57:229-36.
16. Wang R, Lagakos SW, Ware JH, Hunter DJ, Drazen JM. Statistics in medicine--reporting of subgroup analyses in clinical trials. *N Engl J Med.* 2007;357(21):2189-94.
17. Bristow MR, Gilbert EM, Abraham WT, Adams KF, Fowler MB, Hershberger RE, Kubo SH, Narahara KA, Ingersoll H, Krueger S, Young S, Shusterman N. Carvedilol produces dose-related improvements in left ventricular function and survival in subjects with chronic heart failure. MOCHA Investigators. *Circulation.* 1996;94:2807-16.

18. McMurray JJ V, Adamopoulos S, Anker SD, Auricchio A, Böhm M, Dickstein K, Falk V, Filippatos G, Fonseca C, Gomez-Sanchez MA, Jaarsma T, Køber L, Lip GYH, Maggioni A Pietro, Parkhomenko A, Pieske BM, Popescu BA, Rønnevik PK, Rutten FH, Schwitter J, Seferovic P, Stepinska J, Trindade PT, Voors AA, Zannad F, Zeiher A, Bax JJ, Baumgartner H, Ceconi C, Dean V, Deaton C, Fagard R, Funck-Brentano C, Hasdai D, Hoes A, Kirchhof P, Knuuti J, Kolh P, McDonagh T, Moulin C, Reiner Z, Sechtem U, Sirnes PA, Tendera M, Torbicki A, Vahanian A, Windecker S, Bonet LA, Avraamides P, Ben Lamin HA, Brignole M, Coca A, Cowburn P, Dargie H, Elliott P, Flachskampf FA, Guida GF, Hardman S, Iung B, Merkely B, Mueller C, Nanas JN, Nielsen OW, Orn S, Parissis JT, Ponikowski P, Members AF, McMurray JJ V, Adamopoulos S, Anker SD, Auricchio A, Böhm M, Dickstein K, Falk V, Filippatos G, Fonseca C, Gomez-Sanchez MA, Jaarsma T, Køber L, Lip GYH, Maggioni A Pietro, Parkhomenko A, Pieske BM, Popescu BA, Rønnevik PK, Rutten FH, Schwitter J, Seferovic P, Stepinska J, Trindade PT, Voors AA, Zannad F, Zeiher A, Guidelines ESCC for P, Reviewers D. ESC Guidelines for the diagnosis and treatment of acute and chronic heart failure 2012: The Task Force for the Diagnosis and Treatment of Acute and Chronic Heart Failure 2012 of the European Society of Cardiology. Developed in collaboration with the Heart. *Eur J Heart Fail* 2012;14:803–869.
19. Yancy CW, Jessup M, Bozkurt B, Butler J, Casey DE, Drazner MH, Fonarow GC, Geraci SA, Horwich T, Januzzi JL, Johnson MR, Kasper EK, Levy WC, Masoudi FA, McBride PE, McMurray JJ V., Mitchell JE, Peterson PN, Riegel B, Sam F, Stevenson LW, Tang WHW, Tsai EJ, Wilkoff BL. 2013 ACCF/AHA Guideline for the Management of Heart Failure: Executive Summary: A Report of the American College of Cardiology

Foundation/American Heart Association Task Force on Practice Guidelines. *Circulation* 2013;128:1810–1852.

20. Kristensen SL, Martinez F, Jhund PS, Arango JL, Bělohávek J, Boytsov S, Cabrera W, Gomez E, Hagège AA, Huang J, Kiatchoosakun S, Kim K-S, Mendoza I, Senni M, Squire IB, Vinereanu D, Wong RC, Gong J, Lefkowitz MP, Rizkala AR, Rouleau JL, Shi VC, Solomon SD, Swedberg K, Zile MR, Packer M, McMurray JJ V. Geographic variations in the PARADIGM-HF heart failure trial. *Eur Heart J*. 2016 Jun 28. pii: ehw226. [Epub ahead of print]; doi 10.1093/eurheartj/ehw226

LEGENDS TO TABLE AND FIGURES

Table 1: Primary endpoint (composite of death from cardiovascular causes or hospitalization for heart failure) and death from cardiovascular causes according to treatment at baseline, history of coronary revascularization and baseline beta-blocker dose.

Figure 1: Cumulative incidence of the primary endpoint (composite of death from cardiovascular causes or hospitalization for heart failure) in the enalapril and sacubitril/valsartan groups, according to background treatment (Figure 1a by diuretic therapy, Figure 1b by digoxin therapy, Figure 1c by mineralocorticoid receptor antagonist therapy, Figure 1d by implanted cardioverter defibrillator, Figure 1e by coronary revascularization, Figure 1f by betablocker dose above or below 50% of target).

Figure 2: Cumulative incidence of death from cardiovascular causes in the enalapril and sacubitril/valsartan groups, according to background treatment (Figure 2a by diuretic therapy, Figure 2b by digoxin therapy, Figure 2c by mineralocorticoid receptor antagonist therapy, Figure 2d by implanted cardioverter defibrillator, Figure 2e by coronary revascularization, Figure 2f by betablocker dose above or below 50% of target).

Table 1: Primary endpoint (composite of death from cardiovascular causes or hospitalization for heart failure) and death from cardiovascular causes according to baseline treatment, history of coronary revascularization and baseline beta-blocker dose.

	Primary end-point				Cardiovascular death			
	Enalapril n/N (%)	Sacubitril/valsartan n/N (%)	HR (95% CI)	Interaction p-value	Enalapril n/N (%)	Sacubitril/valsartan n/N (%)	HR (95% CI)	Interaction p-value
All patients	1117/4212 (26.5)	914/4187 (21.8)	0.80 (0.73-0.87)	-	693/4212 (16.5)	558/4187 (13.3)	0.80 (0.71-0.89)	-
Diuretic No (n=1661) Yes (n=6738)	157/837 (18.8) 960/3375 (28.4)	129/824 (15.7) 785/3363 (23.3)	0.83 (0.65-1.04) 0.80 (0.72-0.87)	0.915	107/837 (12.8) 586/3375 (17.4)	92/824 (11.2) 466/3363 (13.9)	0.89 (0.67-1.17) 0.79 (0.70-0.89)	0.513
MRA No (n=3728) Yes (n=4671)	494/1812 (27.2) 623/2400 (26.0)	399/1916 (20.8) 515/2271 (22.7)	0.74 (0.65-0.84) 0.85 (0.76-0.96)	0.104	304/1812 (16.8) 389/2400 (16.2)	243/1916 (12.7) 315/2271 (13.9)	0.75 (0.63-0.89) 0.84 (0.73-0.98)	0.319
Digoxin No (n=5860) Yes (n=2539)	717/2896 (24.8) 400/1316 (30.4)	617/2964 (20.8) 297/1223 (24.3)	0.81 (0.73-0.91) 0.78 (0.67-0.90)	0.623	431/2896 (14.9) 262/1316 (19.9)	370/2964 (12.5) 188/1223 (15.4)	0.82 (0.72-0.95) 0.76 (0.63-0.92)	0.537
ICD/CRT No (n=7156) Yes (n=1243)	942/3592 (26.2) 175/620 (28.2)	761/3564 (21.4) 153/623 (24.6)	0.79 (0.72-0.87) 0.84 (0.67-1.04)	0.561	609/3592 (17.0) 84/620 (13.6)	491/3564 (13.8) 67/623 (10.8)	0.80 (0.71-0.90) 0.76 (0.55-1.05)	0.912
Prior coronary revascularization No (n=5759) Yes (n=2640)	761/2921 (26.1) 356/1291 (27.6)	626/2838 (22.1) 288/1349 (21.4)	0.83 (0.74-0.92) 0.74 (0.63-0.86)	0.256	504/2921 (17.3) 189/1291 (14.6)	397/2838 (14.0) 161/1349 (11.9)	0.80 (0.70-0.91) 0.81 (0.65-1.00)	0.925
Beta-blocker target dose <50% (n=4167) ≥50% (n=3644)	566/2123 (26.7) 440/1789 (24.6)	455/2044 (22.3) 390/1855 (21.0)	0.82 (0.72-0.93) 0.82 (0.72-0.94)	0.973	353/2123 (16.6) 258/1789 (14.4)	289/2044 (14.1) 229/1855 (12.4)	0.85 (0.73-0.99) 0.84 (0.70-1.00)	0.923

Figure 1a

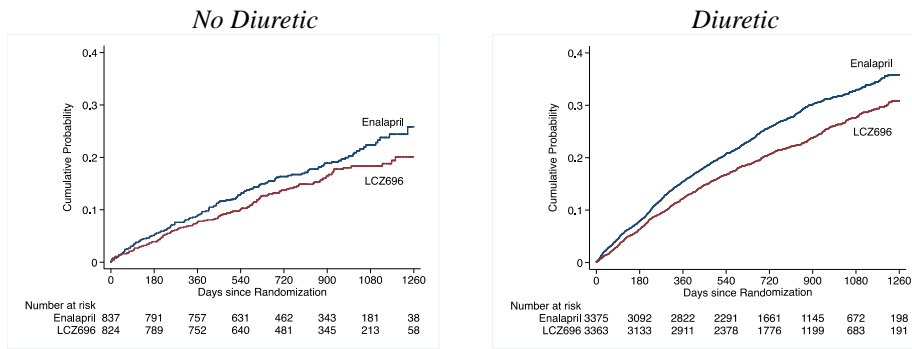


Figure 1b

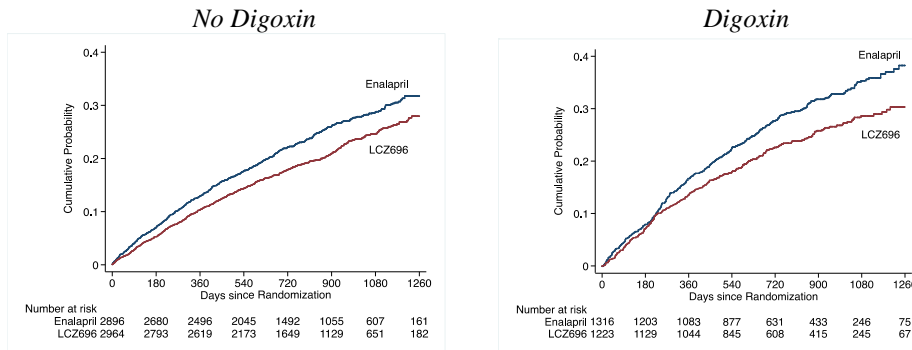


Figure 1c

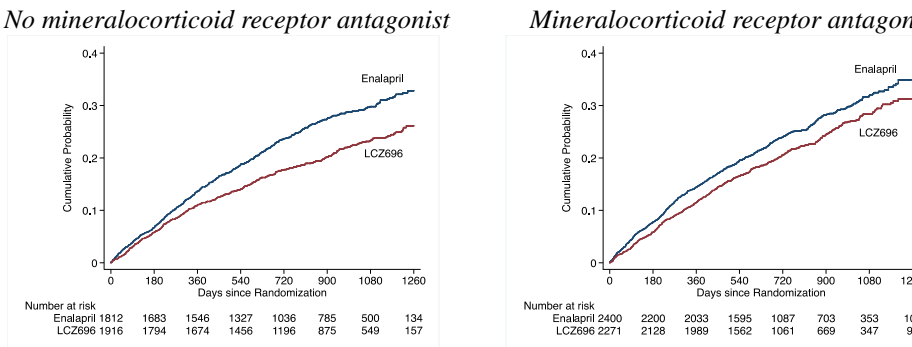
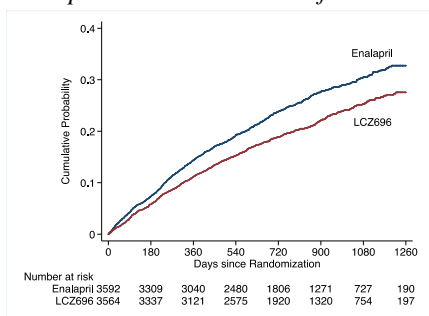


Figure 1d

No implanted cardioverter defibrillator



Implanted cardioverter defibrillator

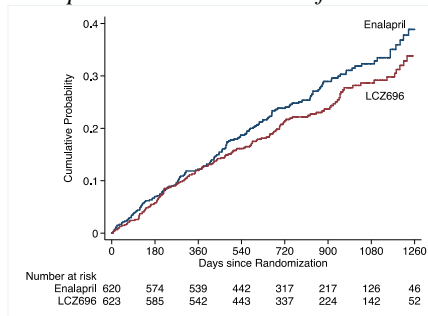
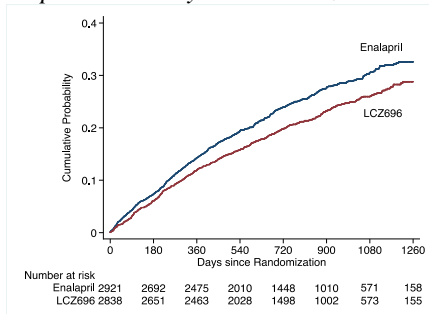


Figure 1e

No prior coronary revascularization



Prior coronary revascularization

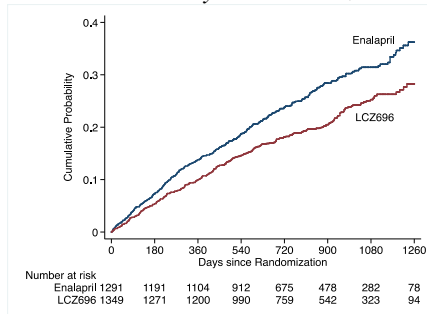
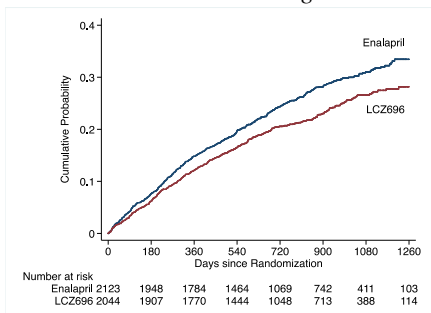


Figure 1f

Beta-blocker dose <50% target dose



Beta-blocker dose ≥50% target dose

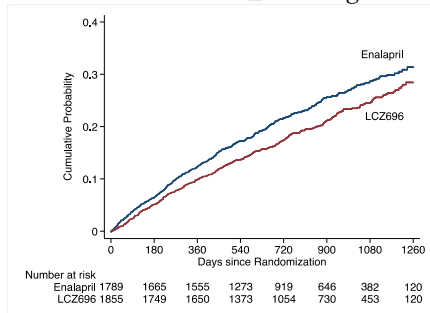


Figure 2a

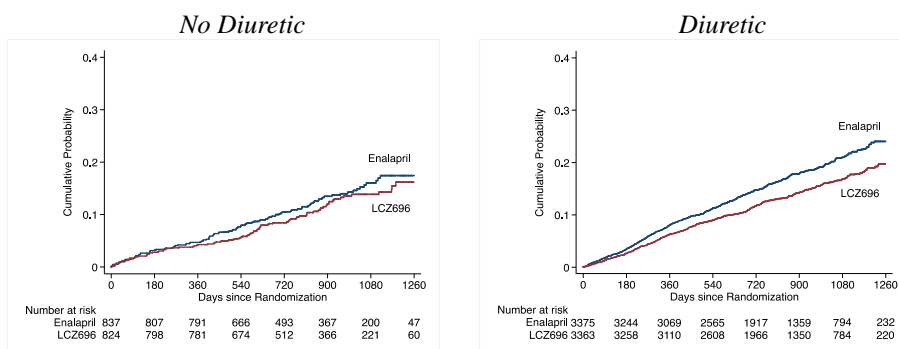


Figure 2b

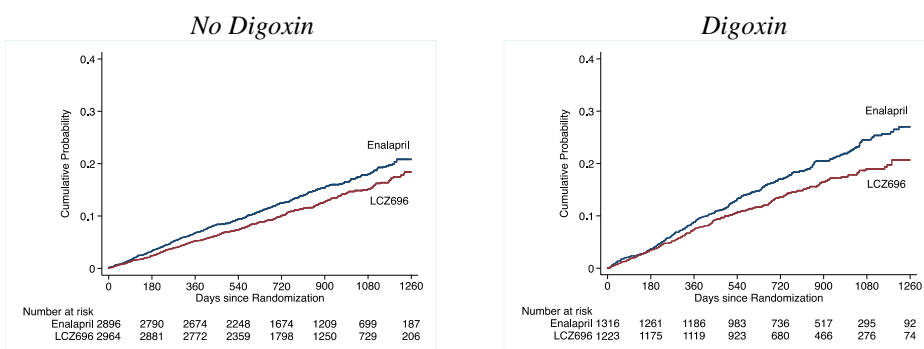


Figure 2c

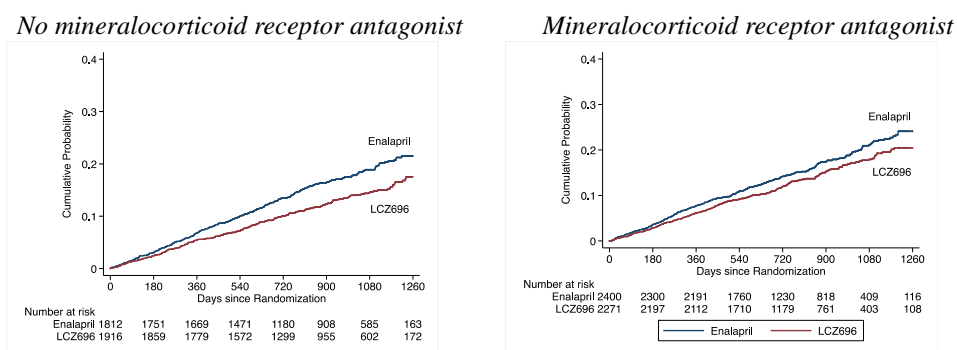
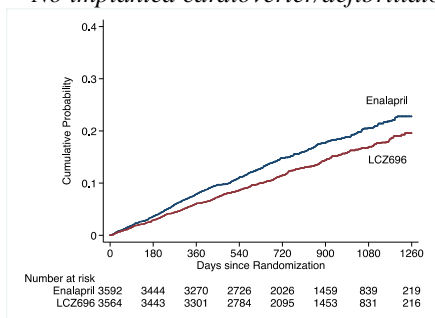


Figure 2d

No implanted cardioverter/defibrillator



Implanted cardioverter/defibrillator

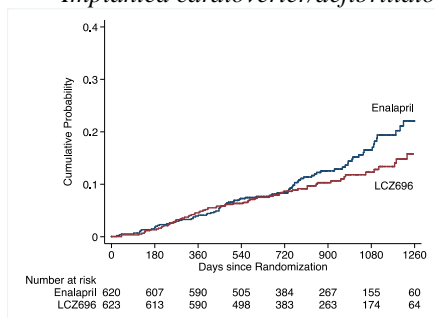
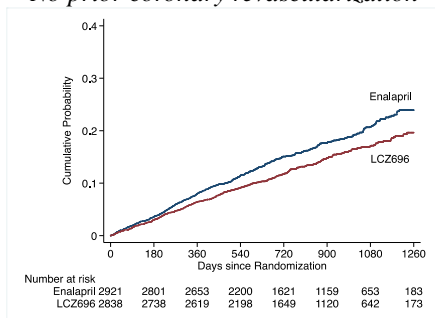


Figure 2e

No prior coronary revascularization



prior coronary revascularization

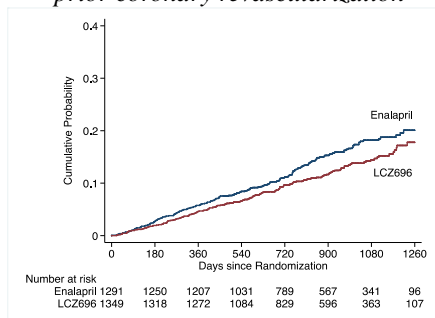
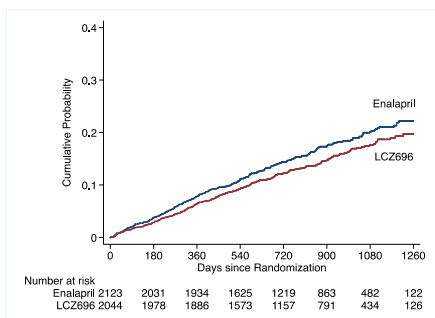
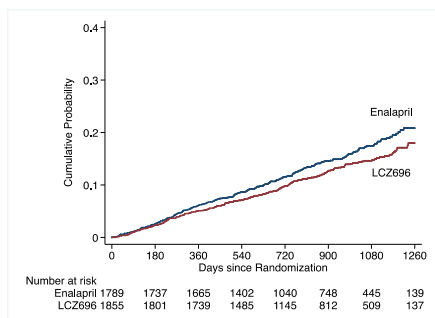


Figure 2f

Beta-blocker dose <50% target dose



Beta-blocker dose ≥50% target dose



SUPPLEMENTAL MATERIAL

Table 1: Baseline characteristics according to baseline diuretic

	Diuretic (Yes)		P value	Diuretic (No)		P value
	Enalapril	Sacubitril/valsartan		Enalapril	Sacubitril/valsartan	
n (%)	n=3375 (40)	n=3363 (40)		n=837 (10)	n=824 (10)	
Age, year	64 ± 11	64 ± 12	0.42	63 ± 11	64 ± 11	0.15
Sex (female), n (%)	762 (22.6%)	715 (21.3%)	0.19	191 (22.8%)	164 (19.9%)	0.15
Race, n (%)						
White	2268 (67.2%)	2262 (67.3%)	0.99	513 (61.3%)	501 (60.8%)	0.91
Black	186 (5.5%)	188 (5.6%)		29 (3.5%)	25 (3.0%)	
Asian	557 (16.5%)	559 (16.6%)		193 (23.1%)	200 (24.3%)	
Other	364 (10.8%)	354 (10.5%)		102 (12.2%)	98 (11.9%)	
Region, n (%)						
North America	249 (7.4%)	239 (7.1%)	0.96	43 (5.1%)	71 (8.6%)	0.016
Latin America	549 (16.3%)	567 (16.9%)		171 (20.4%)	146 (17.7%)	
Western Europe and other	857 (25.4%)	842 (25.0%)		168 (20.1%)	184 (22.3%)	
Central Europe	1174 (34.8%)	1170 (34.8%)		259 (30.9%)	223 (27.1%)	
Asia	546 (16.2%)	545 (16.2%)		196 (23.4%)	200 (24.3%)	
Systolic blood pressure, mm Hg	121 ± 15	121 ± 15	0.90	121 ± 15	122 ± 15	0.04

Heart rate, beats/min	73 ± 12	73 ± 12	0.35	71 ± 12	71 ± 12	0.50
Body mass index, kg/m ²	28 ± 6	28 ± 6	0.81	27 ± 5	27 ± 5	0.51
Serum creatinine, mg/dL	1.13 ± 0.31	1.14 ± 0.31	0.32	1.08 ± 0.26	1.08 ± 0.26	0.86
Clinical features of heart failure						
Left ventricular ejection fraction, %						
	29 ± 6	29 ± 6	0.22	30 ± 6	30 ± 6	0.23
Median BNP, pg/mL (IQR)	256.3 [155.8, 479.3]	263.5 [156.4, 494.4]	0.34	235.7 [145.1, 410.3]	224.9 [144.5, 391.4]	0.50
Median NT-proBNP, pg/mL (IQR)	1658.0 [935.0, 3479.5]	1741.0 [925.5, 3423.5]	0.72	1348.0 [776.0, 2662.0]	1287.5 [774.0, 2459.0]	0.43
NYHA functional class, n (%)						
I	134 (4.0%)	128 (3.8%)	0.22	75 (9.0%)	52 (6.3%)	0.11
II	2308 (68.5%)	2361 (70.3%)		613 (73.4%)	637 (77.6%)	
III	905 (26.8%)	838 (24.9%)		144 (17.2%)	131 (16.0%)	
IV	24 (0.7%)	32 (1.0%)		3 (0.4%)	1 (0.1%)	
Ischemic etiology, n (%)	1979 (58.6%)	1953 (58.1%)	0.64	551 (65.8%)	553 (67.1%)	0.58
Medical history, n (%)						
Hypertension	2417 (71.6%)	2405 (71.5%)	0.93	554 (66.2%)	564 (68.4%)	0.33

Diabetes mellitus	1223	(36.2%)	1211	(36.0%)	0.85	233	(27.8%)	240	(29.1%)	0.56
Atrial fibrillation	1321	(39.1%)	1283	(38.2%)	0.40	253	(30.2%)	234	(28.4%)	0.41
Previous heart failure hospitalization	2196	(65.1%)	2183	(64.9%)	0.89	471	(56.3%)	424	(51.5%)	0.05
Myocardial infarction	1416	(42.0%)	1395	(41.5%)	0.69	400	(47.8%)	423	(51.3%)	0.15
Stroke	293	(8.7%)	273	(8.1%)	0.40	77	(9.2%)	82	(10.0%)	0.60
Treatment at randomization, n (%)										
Previous use of ACE inhibitor	2638	(78.2%)	2649	(78.8%)	0.55	628	(75.0%)	617	(74.9%)	0.94
Previous use of ARB	754	(22.3%)	720	(21.4%)	0.36	209	(25.0%)	209	(25.4%)	0.85
Digitalis	1139	(33.7%)	1068	(31.8%)	0.08	177	(21.1%)	155	(18.8%)	0.23
β-Blocker	3139	(93.0%)	3140	(93.4%)	0.56	773	(92.4%)	759	(92.1%)	0.85
Mineralocorticoid antagonist	1980	(58.7%)	1898	(56.4%)	0.06	420	(50.2%)	373	(45.3%)	0.05
Implantable cardioverter-defibrillator	522	(15.5%)	507	(15.1%)	0.66	98	(11.7%)	116	(14.1%)	0.15
Cardiac resynchronization therapy	244	(7.2%)	244	(7.3%)	0.97	38	(4.5%)	48	(5.8%)	0.24

Table 2: Baseline characteristics according to baseline MRA

	Mineralocorticoid antagonist (Yes)		P value	Mineralocorticoid antagonist (No)		P value
	Enalapril	Sacubitril/valsartan		Enalapril	Sacubitril/valsartan	
n (%)	n=2400 (29)			n=1812 (22)		
Age, year	62 ± 11		0.18	66 ± 11		0.43
Sex (female), n (%)	544 (22.7%)	482 (21.2%)	0.23	409 (22.6%)	397 (20.7%)	0.17
Race, n (%)						
White	1562 (65.1%)	1480 (65.2%)	0.87	1219 (67.3%)	1283 (67.0%)	0.97
Black	151 (6.3%)	140 (6.2%)		64 (3.5%)	73 (3.8%)	
Asian	426 (17.8%)	418 (18.4%)		324 (17.9%)	341 (17.8%)	
Other	261 (10.9%)	233 (10.3%)		205 (11.3%)	219 (11.4%)	
Region, n (%)						
North America	115 (4.8%)	102 (4.5%)	0.94	177 (9.8%)	208 (10.9%)	0.76
Latin America	470 (19.6%)	454 (20.0%)		250 (13.8%)	259 (13.5%)	
Western Europe and other	505 (21.0%)	462 (20.3%)		520 (28.7%)	564 (29.4%)	
Central Europe	890 (37.1%)	843 (37.1%)		543 (30.0%)	550 (28.7%)	
Asia	420 (17.5%)	410 (18.1%)		322 (17.8%)	335 (17.5%)	
Systolic blood pressure, mm Hg	119 ± 15		0.17	124 ± 16		0.70
Heart rate, beats/min	73 ± 12		0.35	72 ± 12		0.51
Body mass index, kg/m ²	28 ± 6		0.29	28 ± 6		0.06

Serum creatinine, mg/dL	1.11 ± 0.29	1.12 ± 0.30	0.52	1.13 ± 0.31	1.13 ± 0.30	0.62
Clinical features of heart failure						
Left ventricular ejection						
fraction, %	29 ± 6	29 ± 6	0.72	30 ± 6	30 ± 6	0.91
Median BNP, pg/mL (IQR)	255.1 [152.4, 478.4]	257.6 [149.8, 496.6]	0.74	244.2 [154.2, 447.5]	252.5 [159.5, 449.6]	0.56
Median NT-proBNP, pg/mL (IQR)	1630.0 [898.0, 3398.0]	1640.0 [881.0, 3270.0]	0.60	1563.0 [876.0, 3105.0]	1618.0 [909.0, 3080.0]	0.59
NYHA functional class, n (%)						
I	118 (4.9%)	98 (4.3%)	0.72	91 (5.0%)	82 (4.3%)	0.008
II	1623 (67.7%)	1551 (68.4%)		1298 (71.8%)	1447 (75.6%)	
III	639 (26.7%)	605 (26.7%)		410 (22.7%)	364 (19.0%)	
IV	17 (0.7%)	13 (0.6%)		10 (0.6%)	20 (1.0%)	
Ischemic etiology, n (%)	1369 (57.0%)	1274 (56.1%)	0.52	1161 (64.1%)	1232 (64.3%)	0.88
Medical history, n (%)						
Hypertension	1645 (68.5%)	1605 (70.7%)	0.11	1326 (73.2%)	1364 (71.2%)	0.18
Diabetes mellitus	811 (33.8%)	751 (33.1%)	0.60	645 (35.6%)	700 (36.5%)	0.55
Atrial fibrillation	884 (36.8%)	820 (36.1%)	0.61	690 (38.1%)	697 (36.4%)	0.28
Previous heart failure						
hospitalization	1633 (68.0%)	1559 (68.6%)	0.66	1034 (57.1%)	1048 (54.7%)	0.15
Myocardial infarction	1013 (42.2%)	942 (41.5%)	0.61	803 (44.3%)	876 (45.7%)	0.39

Stroke	211	(8.8%)	193	(8.5%)	0.72	159	(8.8%)	162	(8.5%)	0.73
Treatment at randomization, n (%)										
Previous use of ACE inhibitor	1862	(77.6%)	1797	(79.1%)	0.20	1404	(77.5%)	1469	(76.7%)	0.55
Previous use of ARB	542	(22.6%)	476	(21.0%)	0.18	421	(23.2%)	453	(23.6%)	0.77
Diuretics	1980	(82.5%)	1898	(83.6%)	0.33	1395	(77.0%)	1465	(76.5%)	0.70
Digitalis	839	(35.0%)	744	(32.8%)	0.11	477	(26.3%)	479	(25.0%)	0.35
β-Blocker	2259	(94.1%)	2127	(93.7%)	0.51	1653	(91.2%)	1772	(92.5%)	0.16
Implantable cardioverter-defibrillator	361	(15.0%)	341	(15.0%)	0.98	259	(14.3%)	282	(14.7%)	0.71
Cardiac resynchronization therapy	156	(6.5%)	169	(7.4%)	0.21	126	(7.0%)	123	(6.4%)	0.51

Table 3: Baseline characteristics according to baseline Digitalis

	Digitalis (Yes)		P value	Digitalis (No)		P value
	Enalapril	Sacubitril/valsartan		Enalapril	Sacubitril/valsartan	
n (%)	n=1316 (16)			n=2896 (34)		
	n=1223 (15)			n=2964 (35)		
Age, year	63 ± 12	62 ± 13	0.04	64 ± 11	65 ± 11	0.24
Sex (female), n (%)	306 (23.3%)	267 (21.8%)	0.39	647 (22.3%)	612 (20.6%)	0.11
Race, n (%)			0.80			0.98
White	722 (54.9%)	666 (54.5%)		2059 (71.1%)	2097 (70.7%)	
Black	83 (6.3%)	71 (5.8%)		132 (4.6%)	142 (4.8%)	
Asian	331 (25.2%)	326 (26.7%)		419 (14.5%)	433 (14.6%)	
Other	180 (13.7%)	160 (13.1%)		286 (9.9%)	292 (9.9%)	
Region, n (%)			0.69			0.99
North America	80 (6.1%)	83 (6.8%)		212 (7.3%)	227 (7.7%)	
Latin America	256 (19.5%)	243 (19.9%)		464 (16.0%)	470 (15.9%)	
Western Europe and other	208 (15.8%)	187 (15.3%)		817 (28.2%)	839 (28.3%)	
Central Europe	440 (33.4%)	382 (31.2%)		993 (34.3%)	1011 (34.1%)	
Asia	332 (25.2%)	328 (26.8%)		410 (14.2%)	417 (14.1%)	
Systolic blood pressure, mm						
Hg	120 ± 15	120 ± 14	0.96	122 ± 15	122 ± 15	0.28
Heart rate, beats/min	75 ± 13	75 ± 12	0.84	72 ± 12	71 ± 12	0.35

Body mass index, kg/m ²	28 ± 6	27 ± 6	0.14	28 ± 5	28 ± 5	0.77
Serum creatinine, mg/dL	1.12 ± 0.30	1.10 ± 0.29	0.09	1.12 ± 0.30	1.14 ± 0.30	0.04
Clinical features of heart failure						
Left ventricular ejection						
fraction, %	29 ± 6	29 ± 6	0.87	30 ± 6	30 ± 6	0.36
Median BNP, pg/mL (IQR)	259.1 [149.8, 519.6]	269.1 [156.7, 548.1]	0.17	245.1 [154.3, 447.9]	249.1 [153.8, 447.9]	0.90
Median NT-proBNP, pg/mL (IQR)	1882.0 [1014.5, 3909.5]	1939.0 [1024.0, 3934.0]	0.45	1502.0 [839.0, 3032.0]	1513.0 [847.0, 2912.0]	0.81
NYHA functional class, n (%)			0.08			
I	56 (4.3%)	42 (3.4%)		153 (5.3%)	138 (4.7%)	0.57
II	865 (65.8%)	855 (69.9%)		2056 (71.1%)	2143 (72.5%)	
III	384 (29.2%)	312 (25.5%)		665 (23.0%)	657 (22.2%)	
IV	10 (0.8%)	14 (1.1%)		17 (0.6%)	19 (0.6%)	
Ischemic etiology, n (%)	656 (49.8%)	596 (48.7%)	0.57	1874 (64.7%)	1910 (64.4%)	0.83
Medical history, n (%)						
Hypertension	850 (64.6%)	783 (64.0%)	0.77	2121 (73.2%)	2186 (73.8%)	0.66
Diabetes mellitus	472 (35.9%)	410 (33.5%)	0.22	984 (34.0%)	1041 (35.1%)	0.36
Atrial fibrillation	707 (53.7%)	637 (52.1%)	0.41	867 (29.9%)	880 (29.7%)	0.84
Previous heart failure						
hospitalization	859 (65.3%)	786 (64.3%)	0.60	1808 (62.4%)	1821 (61.4%)	0.84
Myocardial infarction	400 (30.4%)	366 (29.9%)	0.81	1416 (48.9%)	1452 (49.0%)	0.43

Stroke	109	(8.3%)	102	(8.3%)	0.96	261	(9.0%)	253	(8.5%)	0.94
Treatment at randomization, n (%)										
Previous use of ACE inhibitor	990	(75.2%)	928	(75.9%)	0.70	2276	(78.6%)	2338	(78.9%)	0.79
Previous use of ARB	331	(25.2%)	298	(24.4%)	0.65	632	(21.8%)	631	(21.3%)	0.62
Diuretics	1139	(86.6%)	1068	(87.3%)	0.56	2236	(77.2%)	2295	(77.4%)	0.84
β-Blocker	1210	(91.9%)	1107	(90.5%)	0.20	2702	(93.3%)	2792	(94.2%)	0.16
Mineralocorticoid antagonist	839	(63.8%)	744	(60.8%)	0.13	1561	(53.9%)	1527	(51.5%)	0.07
Implantable cardioverter-defibrillator	162	(12.3%)	145	(11.9%)	0.73	458	(15.8%)	478	(16.1%)	0.74
Cardiac resynchronization therapy	83	(6.3%)	89	(7.3%)	0.33	199	(6.9%)	203	(6.8%)	0.97

Table 4: Baseline characteristics according to baseline ICD/CRT

	ICD/CRT (Yes)		P value	ICD/CRT (No)		P value
	Enalapril	Sacubitril/valsartan		Enalapril	Sacubitril/valsartan	
n (%)	n=620 (7)	n=623 (7)		n=3592 (43)	n=3564 (42)	
Age, year	65 ± 10	65 ± 10	0.84	64 ± 12	64 ± 12	0.78
Sex (female), n (%)	93 (15.0%)	75 (12.0%)	0.17	860 (23.9%)	804 (22.6%)	0.13
Race, n (%)						
White	536 (86.5%)	528 (84.8%)	0.86	2245 (62.5%)	2235 (62.7%)	0.62
Black	39 (6.3%)	45 (7.2%)		176 (4.9%)	168 (4.7%)	
Asian	16 (2.6%)	13 (2.1%)		734 (20.4%)	746 (20.9%)	
Other	29 (4.7%)	37 (5.9%)		437 (12.2%)	415 (11.6%)	
Region, n (%)						
North America	158 (25.5%)	169 (27.1%)	0.87	134 (3.7%)	141 (4.0%)	0.67
Latin America	26 (4.2%)	35 (5.6%)		694 (19.3%)	678 (19.0%)	
Western Europe and other	324 (52.3%)	304 (48.8%)		701 (19.5%)	722 (20.3%)	
Central Europe	99 (16.0%)	102 (16.4%)		1334 (37.1%)	1291 (36.2%)	
Asia	13 (2.1%)	13 (2.1%)		729 (20.3%)	732 (20.5%)	
Systolic blood pressure, mm Hg	118 ± 15	118 ± 14	0.40	122 ± 15	122 ± 15	0.48

Heart rate, beats/min	69 ± 11	68 ± 10	0.59	73 ± 12	73 ± 12	0.08
Body mass index, kg/m ²	29 ± 5	29 ± 5	0.83	28 ± 6	28 ± 5	0.46
Serum creatinine, mg/dL	1.24 ± 0.32	1.24 ± 0.31	0.30	1.10 ± 0.29	1.11 ± 0.29	0.81
Clinical features of heart failure						
Left ventricular ejection fraction, %						
	27 ± 7	27 ± 6	0.48	30 ± 6	30 ± 6	0.27
Median BNP, pg/mL (IQR)	245.0 [162.9, 434.9]	244.8 [158.4, 458.4]	0.69	251.5 [151.6, 475.0]	257.2 [153.1, 476.4]	0.61
Median NT-proBNP, pg/mL (IQR)	1526.0 [842.0, 2954.0]	1569.0 [903.0, 2851.0]	0.76	1620.0 [891.0, 3390.0]	1647.0 [881.0, 3281.0]	0.52
NYHA functional class, n (%)						
I	18 (2.9%)	24 (3.9%)	0.02	191 (5.3%)	156 (4.4%)	0.80
II	470 (75.8%)	461 (74.2%)		2451 (68.3%)	2537 (71.3%)	
III	129 (20.8%)	133 (21.4%)		920 (25.7%)	836 (23.5%)	
IV	3 (0.5%)	3 (0.5%)		24 (0.7%)	30 (0.8%)	
Ischemic etiology, n (%)	407 (65.6%)	425 (68.2%)	0.54	2123 (59.1%)	2081 (58.4%)	0.33
Medical history, n (%)						
Hypertension	409 (66.0%)	430 (69.0%)	0.94	2562 (71.3%)	2539 (71.2%)	0.25
Diabetes mellitus	252 (40.6%)	249 (40.0%)	0.85	1204 (33.5%)	1202 (33.7%)	0.81

Atrial fibrillation	236	(38.1%)	234	(37.6%)	0.27	1338	(37.2%)	1283	(36.0%)	0.85
Previous heart failure hospitalization	399	(64.4%)	416	(66.8%)	0.15	2268	(63.1%)	2191	(61.5%)	0.37
Myocardial infarction	351	(56.6%)	364	(58.4%)	0.99	1465	(40.8%)	1454	(40.8%)	0.52
Stroke	67	(10.8%)	62	(10.0%)	0.74	303	(8.4%)	293	(8.2%)	0.62
Treatment at randomization, n (%)										
Previous use of ACE inhibitor	488	(78.7%)	517	(83.0%)	0.84	2778	(77.3%)	2749	(77.1%)	0.06
Previous use of ARB	139	(22.4%)	107	(17.2%)	0.90	824	(22.9%)	822	(23.1%)	0.19
Diuretics	522	(84.2%)	507	(81.4%)	0.46	2853	(79.4%)	2856	(80.1%)	0.19
Digitalis	162	(26.1%)	145	(23.3%)	0.09	1154	(32.1%)	1078	(30.2%)	0.24
β-Blocker	600	(96.8%)	601	(96.5%)	0.6	3312	(92.2%)	3298	(92.5%)	0.77
Mineralocorticoid antagonist	361	(58.2%)	341	(54.7%)	0.03	2039	(56.8%)	1930	(54.2%)	0.21
Cardiac resynchronization therapy	215	(34.7%)	223	(35.8%)	0.83	67	(1.9%)	69	(1.9%)	0.68

Table 5: Baseline characteristics according to Prior coronary revascularization

	Prior coronary revascularization (Yes)		P value	Prior coronary revascularization (No)		P value
	Enalapril	Sacubitril/valsartan		Enalapril	Sacubitril/valsartan	
n (%)	n=1291 (15)	n=1349 (16)		n=2921(35)	n=2838 (34)	
Age, year	65 ± 10	66 ± 10	0.26	63 ± 12	63 ± 12	0.36
Sex (female), n (%)	176 (13.6%)	174 (12.9%)	0.58	777 (26.6%)	705 (24.8%)	0.13
Race, n (%)						
White	996 (77.1%)	1061 (78.7%)	0.52	1785 (61.1%)	1702 (60.0%)	0.54
Black	27 (2.1%)	29 (2.1%)		188 (6.4%)	184 (6.5%)	
Asian	183 (14.2%)	165 (12.2%)		567 (19.4%)	594 (20.9%)	
Other	85 (6.6%)	94 (7.0%)		381 (13.0%)	358 (12.6%)	
Region, n (%)						
North America	146 (11.3%)	171 (12.7%)	0.42	146 (5.0%)	139 (4.9%)	0.63
Latin America	126 (9.8%)	143 (10.6%)		594 (20.3%)	570 (20.1%)	
Western Europe and other	430 (33.3%)	428 (31.7%)		595 (20.4%)	598 (21.1%)	
Central Europe	417 (32.3%)	451 (33.4%)		1016 (34.8%)	942 (33.2%)	
Asia	172 (13.3%)	156 (11.6%)		570 (19.5%)	589 (20.8%)	
Systolic blood pressure, mm Hg	120 ± 15	121 ± 15	0.15	122 ± 16	122 ± 15	0.74
Heart rate, beats/min	70 ± 11	70 ± 12	0.99	73 ± 12	73 ± 12	0.25

Body mass index, kg/m ²	29 ± 5		28 ± 5		0.44	28 ± 6		28 ± 6		0.88
Serum creatinine, mg/dL	1.18 ± 0.29		1.19 ± 0.31		0.25	1.09 ± 0.30		1.09 ± 0.29		0.99
Clinical features of heart failure										
Left ventricular ejection fraction, %										
	29 ± 6		30 ± 6		0.03	29 ± 6		29 ± 6		0.82
Median BNP, pg/mL (IQR)										
	246.5 [152.7, 421.3]		249.9 [162.3, 416.7]		0.33	252.4 [153.9, 491.0]		257.9 [149.7, 506.0]		0.92
Median NT-proBNP, pg/mL (IQR)										
	1431.0 [812.0, 2530.0]		1455.0 [843.0, 2718.0]		0.33	1730.0 [928.0, 3690.0]		1747.0 [922.0, 3486.0]		0.62
NYHA functional class, n (%)										
I	57	(4.4%)	48	(3.6%)	0.63	152	(5.2%)	132	(4.7%)	0.07
II	943	(73.0%)	1000	(74.3%)		1978	(67.9%)	1998	(70.5%)	
III	283	(21.9%)	291	(21.6%)		766	(26.3%)	678	(23.9%)	
IV	8	(0.6%)	6	(0.4%)		19	(0.7%)	27	(1.0%)	
Ischemic etiology, n (%)	1210	(93.7%)	1276	(94.6%)	0.34	1320	(45.2%)	1230	(43.3%)	0.16
Medical history, n (%)										
Hypertension	961	(74.4%)	1022	(75.8%)	0.43	2010	(68.8%)	1947	(68.6%)	0.87
Diabetes mellitus	593	(45.9%)	578	(42.8%)	0.11	863	(29.5%)	873	(30.8%)	0.31
Atrial fibrillation	435	(33.7%)	424	(31.4%)	0.21	1139	(39.0%)	1093	(38.5%)	0.71

Previous heart failure										
hospitalization	819	(63.4%)	831	(61.6%)	0.33	1848	(63.3%)	1776	(62.6%)	0.59
Myocardial infarction	1035	(80.2%)	1092	(80.9%)	0.61	781	(26.7%)	726	(25.6%)	0.32
Stroke	131	(10.1%)	123	(9.1%)	0.37	239	(8.2%)	232	(8.2%)	0.99
Treatment at randomization, n (%)										
Previous use of ACE inhibitor	1029	(79.7%)	1094	(81.1%)	0.37	2237	(76.6%)	2172	(76.5%)	0.96
Previous use of ARB	270	(20.9%)	260	(19.3%)	0.29	693	(23.7%)	669	(23.6%)	0.89
Diuretics	1018	(78.9%)	1066	(79.0%)	0.92	2357	(80.7%)	2297	(80.9%)	0.81
Digitalis	242	(18.7%)	249	(18.5%)	0.85	1074	(36.8%)	974	(34.3%)	0.05
β-Blocker	1211	(93.8%)	1271	(94.2%)	0.65	2701	(92.5%)	2628	(92.6%)	0.85
Mineralocorticoid antagonist	681	(52.7%)	663	(49.1%)	0.06	1719	(58.8%)	1608	(56.7%)	0.09
Implantable cardioverter- defibrillator	337	(26.1%)	352	(26.1%)	0.99	283	(9.7%)	271	(9.5%)	0.86
Cardiac resynchronization therapy	141	(10.9%)	133	(9.9%)	0.37	141	(4.8%)	159	(5.6%)	0.19

Table 6: Baseline characteristics according to baseline beta-blocker dose (target dose $\geq 50\%$ vs. $< 50\%$)

	Beta-blocker target dose ($\geq 50\%$)		P value	Beta-blocker target dose ($< 50\%$)		P value
	Enalapril	Sacubitril/valsartan		Enalapril	Sacubitril/valsartan	
n (%)	n=1789 (21)	n=1855 (22)		n=2123 (25)	n=2044 (24)	
Age, year	64 \pm 11	64 \pm 11	0.75	64 \pm 12	64 \pm 12	0.94
Sex (female), n (%)	387 (21.6%)	366 (19.7%)	0.16	496 (23.4%)	442 (21.6%)	0.18
Race, n (%)						
White	1456 (81.4%)	1496 (80.6%)	0.89	1164 (54.8%)	1113 (54.5%)	0.96
Black	96 (5.4%)	100 (5.4%)		103 (4.9%)	101 (4.9%)	
Asian	96 (5.4%)	110 (5.9%)		570 (26.8%)	563 (27.5%)	
Other	141 (7.9%)	149 (8.0%)		286 (13.5%)	267 (13.1%)	
Region, n (%)						
North America	179 (10.0%)	205 (11.1%)	0.84	104 (4.9%)	98 (4.8%)	0.97
Latin America	240 (13.4%)	244 (13.2%)		423 (19.9%)	415 (20.3%)	
Western Europe and other	539 (30.1%)	556 (30.0%)		424 (20.0%)	393 (19.2%)	
Central Europe	742 (41.5%)	751 (40.5%)		602 (28.4%)	576 (28.2%)	
Asia	89 (5.0%)	99 (5.3%)		570 (26.8%)	562 (27.5%)	
Systolic blood pressure, mm Hg	123 \pm 16	123 \pm 15	0.88	120 \pm 15	121 \pm 15	0.06

Heart rate, beats/min	72 ± 12	72 ± 12	0.15	73 ± 12	73 ± 12	0.60
Body mass index, kg/m ²	30 ± 6	30 ± 6	0.65	27 ± 5	27 ± 5	0.06
Serum creatinine, mg/dL	1.13 ± 0.29	1.15 ± 0.29	0.14	1.11 ± 0.30	1.11 ± 0.30	0.95
Clinical features of heart failure						
Left ventricular ejection fraction, %	30 ± 6	30 ± 6	0.92	29 ± 6	29 ± 6	0.07
Median BNP, pg/mL (IQR)	241.4 [152.0, 424.7]	243.6 [151.7, 434.5]	0.73	256.7 [154.7, 491.4]	267.1 [155.9, 503.1]	0.39
Median NT-proBNP, pg/mL (IQR)	1549.0 [859.0, 3062.0]	1546.5 [869.0, 2941.5]	0.93	1654.0 [913.0, 3387.0]	1685.5 [914.0, 3438.0]	0.73
NYHA functional class, n (%)						
I	67 (3.7%)	76 (4.1%)	0.35	126 (5.9%)	94 (4.6%)	0.05
II	1230 (68.8%)	1309 (70.8%)		1489 (70.2%)	1480 (72.4%)	
III	472 (26.4%)	452 (24.4%)		497 (23.4%)	453 (22.2%)	
IV	18 (1.0%)	13 (0.7%)		8 (0.4%)	16 (0.8%)	
Ischemic etiology, n (%)	1070 (59.8%)	1131 (61.0%)	0.45	1277 (60.2%)	1217 (59.5%)	0.66
Medical history, n (%)						
Hypertension	1365 (76.3%)	1400 (75.5%)	0.58	1406 (66.2%)	1375 (67.3%)	0.48
Diabetes mellitus	666 (37.2%)	687 (37.0%)	0.93	690 (32.5%)	661 (32.3%)	0.89

Atrial fibrillation	745	(41.6%)	770	(41.5%)	0.91	726	(34.2%)	625	(30.6%)	0.014
Previous heart failure hospitalization	1154	(64.5%)	1170	(63.1%)	0.39	1341	(63.2%)	1268	(62.0%)	0.43
Myocardial infarction	806	(45.1%)	852	(45.9%)	0.59	887	(41.8%)	860	(42.1%)	0.85
Stroke	176	(9.8%)	160	(8.6%)	0.22	160	(7.5%)	170	(8.3%)	0.36
Treatment at randomization, n (%)										
Previous use of ACE inhibitor	1419	(79.3%)	1503	(81.0%)	0.18	1625	(76.5%)	1551	(75.9%)	0.59
Previous use of ARB	383	(21.4%)	355	(19.1%)	0.08	502	(23.6%)	499	(24.4%)	0.54
Diuretics	1422	(79.5%)	1501	(80.9%)	0.24	1717	(80.9%)	1639	(80.2%)	0.52
Digitalis	491	(27.4%)	478	(25.8%)	0.24	719	(33.9%)	629	(30.8%)	0.03
Mineralocorticoid antagonist	1017	(56.8%)	1007	(54.3%)	0.13	1242	(58.5%)	1120	(54.8%)	0.01
Implantable cardioverter-defibrillator	377	(21.1%)	395	(21.3%)	0.81	223	(10.5%)	206	(10.1%)	0.59
Cardiac resynchronization therapy	170	(9.5%)	177	(9.5%)	0.86	105	(4.9%)	104	(5.1%)	0.96

Table 7 Primary endpoint (composite of death from cardiovascular causes or hospitalization for heart failure) and death from cardiovascular causes according to baseline treatment, history of coronary revascularization and baseline beta-blocker dose adjusted for baseline factors (region, age, sex, systolic blood pressure, heart rate, body mass index, serum creatinine, ejection fraction, NYHA class, ischemic etiology, NT-proBNP, history of hypertension, myocardial infarction, stroke, diabetes mellitus, previous hospitalization for heart failure, previous use of ACE inhibitor, ARB and when part of the subgroup, diuretic, digitalis, mineralocorticoid receptor antagonist and ICD use).

	Primary end-point		Cardiovascular death	
	HR (95% CI)	Interaction p-value	HR(95% CI)	Interactionp-value
Diuretic				
No (n=1661)	0.84 (0.66-1.06)	0.671	0.90 (0.68-1.20)	0.407
Yes (n=6738)	0.80 (0.72-0.878)		0.79 (0.70-0.90)	
MRA				
No (n=3728)	0.74 (0.65-0.85)	0.104	0.76 (0.64-0.91)	0.317
Yes (n=4671)	0.86 (0.76-0.97)		0.86 (0.74-1.00)	
Digoxin				
No (n=5860)	0.82 (0.74-0.92)	0.766	0.84 (0.73-0.96)	0.622
Yes (n=2539)	0.78 (0.68-0.92)		0.77 (0.64-0.94)	
ICD/CRT				
No (n=7156)	0.80 (0.73-0.88)	0.524	0.81 (0.72-0.92)	0.988
Yes (n=1243)	0.86 (0.69-1.07)		0.79 (0.57-1.10)	
Prior coronary revascularization				
No (n=5759)	0.84 (0.75-0.93)	0.311	0.82 (0.71-0.93)	0.949
Yes (n=2640)	0.75 (0.64-0.88)		0.82 (0.63-1.01)	
Beta-blocker target dose				
<50% (n=4167)	0.83 (0.73-0.96)	0.964	0.87 (0.73-1.04)	0.978
≥50% (n=3644)	0.85 (0.75-0.96)		0.87 (0.75-1.02)	

PARADIGM-HF Investigators

PARADIGM-HF Collaborators: Vanhaecke J, Ramires F, Katova T, Arnold M, Huang J, Gomez E, Belohlavek J, Refsgaard J, Lederballe O, Gonzalez A, Duarte YC, Rosenthal A, Peuhkurinen K, Hagege AA, Böhm M, Arango JL, Andersen K, Senni M, Erglis A, Petrulioniene Z, Llamas EB, Mosterd A, Cabrera W, Sibulo AS, Jr, Negrusz-Kawecka M, Silva-Cardoso J, Vinereanu D, Boytsov S, Wong R, Dukat A, Burgess L, Kim KS, Calvo C, Fu M, Chen CH, Kiatchoosakun S, Kozan O, Starling R, Teerlink J, Dargie H, Foley R, Francis GS, Komajda M, Pocock S, Barkoudah E, Bello N, Brahimi A, Charytan D, Duong C, Finn P, Hartley H, Vazir A, Weinrauch L, Kaplan AP, Brown N, Zuraw B, Greenlaw N, Albus J, Alvarisqueta A, Amuchastegui M, Astesiano A, Avila E, Beloscar J, Berli M, Borrego C, Bustos B, Calella P, Carbajales J, Caruso G, Caruso O, Casabé H, Cimbaro Canella J, Colombo Berra F, Colque R, Costello R, Dran R, Ferre Pacora F, Gabito A, Glenn J, Guzman P, Ibañez J, Ingaramo R, Kotliar C, Leon de la Fuente R, Liberman A, Liniado G, Llanos J, Lobo Marquez L, Luquez H, Mackinnon I, Mallagray M, Martingano R, Mercado D, Moises Azize G, Parody L, Perez Rey R, Petenian E, Rodríguez M, Rojas C, Romano A, Salvatierra Ruiz A, Sanchez A, Sarjanovich R, Sarries A, Schiavi L, Sessa H, Soler J, Vico M, Zaidman C, Vanhaecke J, Decroly P, Dendale P, Ector B, Friart A, Heyse A, Missault L, Mulleners T, Smolders W, Vandekerckhove H, Vincent M, Weytjens C, Wollaert B, Ramires F, Andrade C, Bassan R, Borelli F, Botelho R, Braga J, Braile M, Costa C, Costa F, Duda N, Garcia M, Greco O, Hernandez M, Jaeger C, Koehler I, Luiz Rech R, Mesquita E, Moraes J, Jr, Neto J, Neuenschwander F, Paiva M, Rassi S, Reis G, Rossi P, Rabelo A, Reis H, Saporito W, Simoes M, Souza W, Vilas Boas F, Katova T, Benov H, Boeva-Chompalova B, Chobanska P, Denchev S, Dimov B, Donova T, Georgiev P, Gotchev D, Goudev A, Gruev T, Hergeldjjeva V, Lazov P, Manukov I, Marchev S, Mihov L, Milanova M, Mileva-Manolova A, Mincheva-Kabakchieva V, Parvanova Z, Pencheva G, Petranov S, Raev D, Ramshev K, Sirakova V, Staneva A, Tisheva-Gospodinova S, Todorov G, Tokmakova M, Tzekova M, Valchanova P, Yotov Y, Zhelev V, Arnold M, Bergeron S, Bourgeois R, Bourgeois S, Cha J, DeGrâce M, Delgado D, Deslongchamps F, Dion D, Giannetti N, Huynh T, Johnston J, Klinke P, Kornder J, Labonte R, Lauzon C, Lepage S, Mak S, Moe G, Murthy D, Pandey S, Parker J, Rajda M, Robinson S, Rupka D, Sabe-Affaki G, Sestier F, Sheppard R, Yao L, Albornoz F, Avendaño P, Cobos L, Escobar E, Fernandez M, Jalil J, Lanas F, Sepulveda P, Stockins B, Yovaniniz P, Huang J, Gui M, Hu HD, Ke YN, Li LG, Li XD, Li XL, Li WM, Liu SW, Liu XH, Ma GS, Sun NL, Xu G, Yang K, Yuan ZY, Zhang J, Zhao RP, Gomez E, Accini J,

Almanzar A, Coronel J, Cotes C, Echeverria L, Manzur F, María E, Reynales H, Rodriguez M, Sotomayor A, Urina M, Velasquez J, Vélez S, Vesga B, Belohlavek J, Burianova H, Carda J, Cech V, Cepelak M, Hanustiakova A, Horny I, Kolar K, Krupicka J, Kvasnicka J, Lindovsky P, Lorenc Z, Malek F, Malik J, Mandovec A, Petrova I, Podzemska B, Povolny P, Radvan M, Richter M, Riha V, Sabl P, Slaby J, Svejda J, Telekes P, Ulman J, Vomacka Z, Zemek S, Lederballe O, Refsgaard J, Andersen H, Egstrup K, Elming H, Eske N, Gøtzsche O, Jensen J, Køber L, May O, Pedersen O, Rickers H, Steffensen F, Gonzalez A, Paulino A, Martinez P, Duarte YC, Delgado C, Duarte Y, Hidalgo FL, Mariscal C, Marmol R, Rosenthal A, Kaasik A, Kaik J, Laane E, Peuhkurinen K, Jaaskelainen T, Kiilavuori K, Taurio J, Hagege AA, Alexeeva-Kovalchuk A, Bauer F, Berdague P, Berneau JB, Bouvier JM, Damien L, Damy T, Davy JM, Decoulx DE, El-Mansour N, Etchecopar C, Galinier M, Gibelin P, Gosse P, Guetlin A, Labeque JN, Livarek B, Logeart D, Martelet M, Nazeyrollas P, Neuder Y, Nourredine M, Poulard JE, RaidRihani R, Sabatier R, Tran NT, Yannick N, Zannad F, Bohm M, Adelberger V, Al-Zoebi A, Bastian A, Behrens S, Bessler H, Braun R, Brehm B, Buhr M, Cieslinski G, vom Dahl J, Daut W, Demmig HJ, Denny S, Ebert HH, Fehtrup C, Fischer S, Frick HM, Genth-Zotz S, Gerbaulet U, Germann H, Geßner S, Gola G, Grönefeld G, Hagenow A, Hampf J, Hartmann A, Hauf G, Hegeler-Molkewehrum C, Hegemann P, Hermes S, Himpel-Bönninghoff A, Hoeltz S, Jerwan-Keim R, Kadel C, Karle C, Kindermann I, Knapp M, Krause KH, Krosse B, Kühne U, Kuhrs M, Leicht M, Löbe M, Loos H, Mehling H, Melchior K, Menzel F, Münzel T, Natour M, Naudts I, Naumann R, Nischik R, Olbrich HG, Pohl W, Prohaska M, Proskynitopoulos N, Regner S, Reimer D, Roeder S, Rummel R, Salbach P, Schäfer T, Schaum T, Schenkenberger I, Schindler A, Schmidt A, Schmidt E, Schnabel A, Schneider R, Schneider W, Schreckenberger A, Schreibmüller F, Schreiner M, Schröder T, Schumacher M, Segner A, Seibert H, Siao G, Siao K, Sohn HY, Stöhring R, Tangerding G, Taubert G, Terhorst A, Tesch C, Toursarkissian N, Tyler K, Uebel P, Weyland K, Wilke A, Yilmaz A, Zemmrich C, Zeh W, Zotz R, Arango JL, Arriola J, Corona V, Leal S, López E, Muñoz R, Ovando A, Paniagua A, Rodríguez D, Velasquez L, Wyss F, Tse HF, Li SK, Yan B, Yip G, Merkely B, Andrassy G, Andreka P, Bakai J, Csapo K, Cziraki A, Édes I, Forster T, Hajko E, Illes A, Jánoskúti L, Kalina A, Kovacs Z, László Z, Lupkovics G, Matoltsy A, Müller G, Nagy A, Noori E, Nyolczas N, Papp A, Salamon C, Szántai G, Szocs A, Tomcsányi J, Toth D, Varjú I, Veress G, Vertes A, Zámolyi K, Zilahi Z, Andersen K, Gudnason T, Sigurdsson A, Thorgeirsson G, Abhyankar A, Agarwal D, Aggarwal R, Bagirath R, Banker D, Bisne V, Bohra P, Chopra V, Dani S, Dharmadhikari A, Fulwani M, Gadkari M,

Ghaisas N, Basavanagowdappa H, Gupta S, Hiremath S, Jagtap P, Jain A, Jain V, Jindal R, Joseph S, Kerkar P, Kumbha M, Malipeddi B, Mathan G, Mehta A, Mohan M, Murthy L, Nair A, Pai V, Pandey A, Prakash V, Rao M, Rao NS, Reddy N, Sarma P, Shah P, Shamsudden K, Sharma K, Sinha S, Thakkar B, Thanvi S, Trivedi P, Vijan V, Yugandhar B, Aronson D, Ben Gal T, Goland S, Katz A, Keren A, Lewis B, Marmor A, Mayler S, Shochat M, Senni M, Anastasio L, Baldin M, Brunelli C, Casolo G, Coppolino C, Cosmi F, Danzi G, Destro M, Di Napoli T, D'Ospina A, Fucili A, Gigantino A, Liberato NL, Lombardi F, Lembo G, Magrini F, Mannarino E, Marchese D, Minneci C, Modena M, Mos L, Napoli T, Opasich C, Pajes G, Perticone F, Pileri P, Poddighe G, Ronchi E, Saba P, Sicuro M, Silvestri F, Salerno Uriarte J, Spagnuolo V, Sprovieri M, Taddei S, Terrosu P, Tespili M, Uriarte J, Vergoni W, Volterrani M, Erglis A, Dormidontova G, Eglite R, Lvova T, Rancane G, Sime I, Petrulioniene Z, Luksiene D, Maleckas T, Mazutavicius R, Miliuniene R, Petrulioniene Z, Slapikas R, Ahmad W, Chew D, Ismail O, Ong T, Llamas EB, Aguilera M, Arenas J, Carrillo J, González J, Leon S, Llamas G, Macias A, Meaney A, Orihuela O, Pavía A, Rodriguez I, Rodriguez T, Salcido E, Solache G, Velasco R, Mosterd A, Basart D, Bellersen L, Derks A, Dijkgraaf R, Dunselman P, van Eck J, Gurlek C, den Hartog F, Hoedemaker G, Kaplan R, Koolen J, Liem L, Milhous J, de Nooijer C, Pronk A, Brunner-la Rocca H, Ronner E, Swart H, Tjeerdsma G, Willems F, Avilés E, Frago G, González B, Nieto R, Cabrera W, Alegre R, Azañero R, García JH, Godoy A, Heredia J, Lu L, Orihuela B, Rodriguez A, Roldan Y, Torres P, Urquiaga J, Sibulo AS, Jr, Anonuevo J, Atilano A, Borromeo A, Castillo R, Chua P, Ferrolino A, Guerrero A, Locnen S, Manlutac B, Rogelio G, Rosita R, Ruales A, Vilela G, Negrusz-Kawecka M, Bebenek W, Sobkowicz B, Cymerman K, Dabrowska M, Foczpaniak M, Jazwinska-Tarnawska E, Kabara A, Kania G, Kolaczyk P, Kucharski W, Landa K, Mirek-Bryniarska E, Piepiorka M, Pijanowski Z, Sciborski R, Szpajer M, Tyminski M, Weglarz P, Wojciechowska C, Wronska D, Almeida F, Andrade A, Braganca N, Carvalho S, Fonseca C, Oliveira L, Padua F, Silvestre I, Soares R, Vinereanu D, Andor M, Bartos D, Basarab G, Coman I, Copaci I, Cristea M, Dragulescu S, Enache D, Fruntelata A, Iliescu L, Istratoaie O, Lighezan D, Militaru C, Nanea T, Nechita C, Puschita M, Tomescu M, Tudoran M, Boitsov S, Ageev F, Averkov O, Akimov A, Ballyuzek M, Baranov E, Baranova E, Barbarash O, Berkovich O, Berns S, Bessonova N, Boyarkin M, Bulashova O, Chernetsov V, Chukaeva I, Kamensky I, Dovgalevsky Y, Dovgolits S, Duplyakov D, Ermoshkina L, Fitilev S, Galyavich A, Gendlin G, Gofman A, Goloschekin B, Gomova T, Gordienko A, Karpov Y, Kastanayan A, Khromtsova O, Kisliak O, Kobalava Z, Konradi A, Korolev M, Kosmacheva E, Kostenko V,

Koziolova N, Kuimov A, Kulibaba E, Lebedev P, Lesnov V, Libis R, Lopatin Y, Makukhin V, Masterov I, Moiseeva Y, Morozova T, Motylev I, Murashkina S, Nosov V, Oleynikov V, Palatkina T, Parmon E, Pimenov L, Privalov D, Rafalsky V, Rebrov A, Reznik I, Ruda M, Saifutdinov R, Sayganov S, Shvarts Y, Shpagina L, Shustov S, Shutemova E, Sitnikova M, Sizova J, Smolenskaya O, Solovieva A, Staroverov I, Struk R, Svistov A, Tarasov N, Tarlovskaya E, Tereschenko S, Trofimov N, Uspensky Y, Vasilieva E, Vezikova N, Vishnevsky A, Volkov D, Yakhontov D, Yakovlev A, Yavdosyuk A, Zateyshchikova A, Zharkov O, Zhilyaev E, Zotov D, Zrazhevsky K, Wong R, Lee C, Ong H, Yeo D, Dukát A, Antalík L, Baníková A, Demešová D, Dvoržák M, Fazekaš F, Foldiová D, Fülöp P, Kabaivanov P, Kovács J, Maček V, Majerčák I, Mazúr J, Mihalíková A, Olexa P, Pacherová J, Palinský M, Pálka J, Pella D, Remišová S, Schichorová J, Smik R, Sokolová B, Šuch S, Viňanská D, Burgess L, Ahmed F, Baben L, Badat A, Basson D, Bester F, Bruning A, Delpont E, Dindar F, Foccart J, Gani M, Gertholtz T, Hellstrom E, Horak A, Ismail S, Jamjam L, Kapp C, Latiff G, Lerumo T, Lombaard J, Manga P, van der Merwe N, Mkhwanazi M, Mohamed Z, Mpe M, Naidoo D, Padayachee T, Ranjith N, van Rensburg DJ, Saaiman J, Sebopa B, Tayob M, Theron H, Thomas M, Vally T, Venter T, Wellmann H, van Zyl L, Kim KS, Baek SH, Zo JH, Hong GR, Kang DH, Kang SM, Kim DS, Kim BJ, Kim U, Park DG, Shin JH, Yoo BS, Calvo C, Luis-Arias J, Arias-Castaño JC, Comín J, de Teresa L, Fernandez-Aviles F, Gomez-Huelgas R, González-Bueno M, Cosín J, Cremer D, Crespo M, Deben F, Freixa R, Galve E, Garcia M, Gomez R, Jiménez M, Mainar L, Marin I, Martinez F, Martínez-Sellés M, Marzal D, Muñoz B, Núñez J, Pascual D, Peña G, Reyes A, Sanmartín M, Torres F, Vida M, Fu M, Ahlström P, Hagerman I, Hajimirsadeghi A, Hansson A, Kempe A, Thorsén C, Zethson-Halldén M, Chen CH, Chen CP, Chen PS, Hsu KL, Lin LY, Pai PY, Tsao HM, Tzeng BH, Kiatchoosakun S, Hengrussamee K, Piyayotai D, Sanguanwong S, Thongsri T, Kozan O, Aktoz M, Barcin C, Birdane A, Camsari A, Ermis C, Guray Y, Kudat H, Ural D, Yavuzgil O, Yenigun M, Yigit Z, Yilmaz MB, Yokusoglu M, Squire I, Apostolakis S, Banerjee P, Barr C, Bhatia V, Bogle R, Boos C, Brigden G, Brown N, Bulugahapitiya S, Dayer M, Dutka D, El-Harari M, Fisher M, Gaballa M, Ghandi N, Glover J, James R, Kadr H, Kalra P, Kardos A, Lang C, Leslie S, Levy T, Lynch M, MacFadyen R, Mahmood S, Mamas M, Martin W, Megarry S, Mohindra R, More R, Moriarty A, Murphy J, Muthusamy R, Neyses L, Nightingale A, O'Toole L, Price D, Purvis J, Ryding A, Smith D, Sobolewska J, Soo L, Strain D, Trelawny J, Trevelyan J, Watkin R, Witherow F, Woldman S, Yousef Z, Teerlink J, Adamson P, Akinboboye O, Akyea-Djamson A, Amin A, Amkieh A, Amos A, Anand I, Awasty V, Banish D, Bank A, Bargout R,

Barnard D, Beacom M, Berg I, Berk M, Best J, Bilazarian S, Bouchard A, Bozkurt B, Breisblatt W, Brookfield L, Brown C, Browne K, Canadas-Zizzias R, Carr K, Chapman D, Chu A, Chung E, Colan D, Davis B, Denning S, Desai V, Dexter J, Dharma C, Edwards J, Efstratiadis S, Eisen H, Fattal P, Fenster B, Fernandez J, Flores A, Flores E, Floro J, Frivold G, Fuhs B, Goldscher D, Gould R, Grazette L, Laufer N, Lieber IH, Haas G, Habet K, Hack T, Haidar A, Halpern S, Hargrove J, Harris J, Hart T, Hass G, Hattler B, Hazelrigg M, Heilman K, Heiman M, Heroux A, Herzog W, Hoffman M, Hotchkiss D, Hunter C, Hunter J, Iteld B, Jackson D, Jaffrani N, Janik M, Jardula M, Joseph J, Kaneshige A, Khan M, Klapholz M, Koren M, Kostis J, Larrain G, Lasala G, Laufer N, Lee K, Leonen M, Lieber I, Liu M, Magno J, Maher J, Maisel A, Maislos F, Malkowski M, Mallis G, Mandviwala M, Mani C, Markham D, Marple R, Maurer M, McKenzie W, Mehrle A, Mendez J, Miller A, Miller R, Miller V, Mishkin J, Mitchell J, Mody F, Montgomery B, Murray D, Murray A, Naidu J, Neutel J, Nguyen D, O'Brien T, Olsen S, Ooi H, Orchard R, Parrott C, Petersen J 2nd, Poling T, Prodafikas J, Ptacin M, Quinlan E 3rd, Quinn T, Rama B, Ramanathan K, Rawitscher D, Rosado J, Rosenthal S, Oberoi MS, Samal A, Schmalfuss C, Schwartz S, Seals A, Selektor Y, Schaefer S, Seto T, Shah S, Shanes J, Sims J, Singh S, Souidi S, Sotolongo R, Suiter D, Sunderam S, Thadani U, Thrasher J, Trichon B, Vicuna R, Vranian R, Jackson R, Wallach S, Ward N, Weinstein D, Wells T, Wickemeyer W, Wight J, Williams C, Wu L, Xu G, Zebrack J, Mendoza I, Avendaño A, Alvarez M, Silva E, Vergara G