



**Effect of cadence selection on peak power and time of power production in elite BMX riders; a laboratory based study.**

Journal:	<i>Journal of Sports Sciences</i>
Manuscript ID	RJSP-2014-0838.R4
Manuscript Type:	Special Issue
Keywords:	Bicycle motocross, peak power, cadence, time to peak power

SCHOLARONE™  
Manuscripts

1  
2  
3  
4  
5  
6  
7  
8  
9  
10  
11  
12  
13  
14  
15  
16  
17  
18  
19  
20  
21  
22  
23  
24  
25  
26  
27  
28  
29  
30  
31  
32  
33  
34  
35  
36  
37  
38  
39  
40  
41  
42  
43  
44  
45  
46  
47  
48  
49  
50  
51  
52  
53  
54  
55  
56  
57  
58  
59  
60

Effect of cadence selection on peak power and time of power production in elite  
BMX riders: a laboratory based study.

**Abstract**

The aims of this study were to analyse the optimal cadence for peak power production and time to peak power in bicycle motocross (BMX) riders. Six male elite BMX riders volunteered for the study. Each rider completed 3 maximal sprints at a cadence of 80, 100, 120 and 140revs·min<sup>-1</sup> on a laboratory Schoberer Rad Messtechnik (SRM) cycle ergometer in isokinetic mode. The riders' mean values for peak power and time of power production in all three tests were recorded. The BMX riders produced peak power (1105±139W) at 100revs·min<sup>-1</sup> with lower peak power produced at 80revs·min<sup>-1</sup> (1060±69W, (F(2,15)=3.162; p=.266;  $\eta^2$  =0.960), 120revs·min<sup>-1</sup> (1077±141W, (F(2,15)=4.348; p=.203;  $\eta^2$  =0.970) and 140revs·min<sup>-1</sup> (1046±175W, (F(2,15)=12.350; p=0.077;  $\eta^2$  =0.989). The shortest time to power production was attained at 120revs·min<sup>-1</sup> in 2.5±1.07s. Whilst a cadence of 80revs·min<sup>-1</sup> (3.5±0.8s, (F(2,15)=2.667; p=.284;  $\eta^2$  =0.800) 100revs·min<sup>-1</sup> (3.00±1.13s, (F(2,15)=24.832; p=.039;  $\eta^2$  =0.974) and 140revs·min<sup>-1</sup> (3.50±0.88s, (F(2,15)=44.167; p=.006;  $\eta^2$  =0.967)) all recorded a longer time to peak power production. The results indicate that the optimal cadence for producing peak power output and reducing the time to peak power output are attained at comparatively low cadences for sprint cycling events. These findings could potentially inform strength and conditioning training to maximise dynamic force production and enable coaches to select optimal gear ratios.

**Keywords:** Time to peak power, cadence, peak power, bicycle motocross.

## Introduction

The sport of bicycle motocross (BMX) is a sprint type event (Zabala et al., 2008) typically contested between eight riders over a track distance ranging between 300m – 400m. In contrast to other cycling disciplines (i.e. road cycling and mountain bike racing) the duration of a BMX race is short (35-45 seconds). Due to the short duration of a typical BMX race, and the reported difficulties with over-taking (Debraux et al., 2013), much of the scientific BMX has been dedicated to the importance of the start (Mateo et al., 2011; Zabala et al., 2009). The significance of the start was recently confirmed through a secondary analysis of the 2012 UCI BMX World Cup series data (Rylands & Roberts, 2014). In this study the authors demonstrated a large correlation existed between the riders' position 8-10 seconds into a race and their eventual finish line placing. Despite previous research suggesting peak power is attained in the first 6m of the race (Herman et al., 2009), Rylands and Roberts (2014) were unable to establish whether a relative physiological relationship existed between power production and pedalling rate (cadence). Consequently it has been suggested that future BMX research should focus on power production and at the start of the race (Herman, 2009).

The influence of torque, power and pedal rate on cycling performance has been well documented in a number of other cycling disciplines. For instance, using twelve elite sprint cyclists Dorel et al. (2005) demonstrated the importance of the power and cadence relationship in velodrome track sprint events. Dorel et al. (2005) concluded that the optimisation of the ratio between peak power and optimal cadence

1  
2  
3 represents a key factor in track cycling performance. The authors found an optimal  
4  
5 ratio during competition resulted in peak powers of  $1600 \pm 116W$  at a cadence of  
6  
7  $129.8 \pm 4.7 \text{ revs}\cdot\text{min}^{-1}$ . Similarly Abbiss et al. (2009) found that peak power was  
8  
9 associated with higher pedal cadences of  $100\text{-}120\text{revs}\cdot\text{min}^{-1}$  for track sprint cyclists.  
10  
11 Moreover, endurance cycling events of  $< 4\text{h}$  report power/cadence relationships of  
12  
13  $90\text{-}100\text{revs}\cdot\text{min}^{-1}$  resulting in an optimal performance outcome, whereas cycling  
14  
15 events  $> 4\text{h}$  recorded an optimal relationship at  $70\text{-}90\text{revs}\cdot\text{min}^{-1}$  (Abbiss et al.,  
16  
17 2009). Consequently leading Abbiss et al. (2009) to conclude that the relationship  
18  
19 between optimal cadence and power is specific to each individual cycling discipline.  
20  
21 To date, however, there is a shortage of BMX related research in this particular  
22  
23 area. Thus it is currently unclear whether an optimal relationship exists between  
24  
25 power and cadence in BMX racing.  
26  
27  
28  
29  
30  
31

32  
33 Previous field-based BMX research has shown that peak power output  
34  
35 ( $2087 \pm 157W$ ) occurred at a cadence of  $212 \pm 3.5\text{revs}\cdot\text{min}^{-1}$  (Herman et al., 2009).  
36  
37 Gardner et al. (2007) ascertained that peak power ( $1791 \pm 169W$ ) occurred at much  
38  
39 lower cadences ( $128 \pm 7\text{revs}\cdot\text{min}^{-1}$ ) in velodrome track sprint cyclists. Rylands et al.  
40  
41 (2013) also reported peak power ( $1256 \pm 276W$ ) occurred at much lower cadences  
42  
43 ( $110 \pm 11\text{revs}\cdot\text{min}^{-1}$ ) in BMX riders. The findings of Rylands and Roberts (2013) are  
44  
45 comparable to those of Hurst et al. (2012) who reported peak power ( $1138 \pm 136$ )  
46  
47 occurred at a cadence of  $115 \pm 5\text{revs}\cdot\text{min}^{-1}$  in elite Downhill mountain bike (MTB)  
48  
49 cyclists. Like BMX, Downhill MTB also requires competitors to accelerate from a  
50  
51 start gate/hut down a ramp and thus may explain some of the similarities between  
52  
53 these studies.  
54  
55  
56  
57  
58  
59  
60

1  
2  
3 However, to date the only study which has examined the optimal relationship  
4 between power and pedalling rate in BMX riders was conducted by Debraux and  
5 Bertucci (2011). Using a PowerTap hub-based powermeter system (Professional  
6 model, CycleOps, USA) and photoelectric cells, seven elite riders performed three,  
7 80m sprints on a flat asphalt surface. Debraux and Bertucci (2011) analysed peak  
8 power and cadence produced during the 80m sprint test. The data formed an  
9 inverted u shaped parabolic graph. This graph was used to extrapolate an optimal  
10 theoretical cadence that elicited peak power ( $122\pm 18\text{revs}\cdot\text{min}^{-1}$ ). Previous studies in  
11 this area (Sergeant et al., 1981; Vandewalle et al., 1985; Martin et al., 2007), albeit  
12 in other cycling disciplines, suggested that using a single data set to identify optimal  
13 relationships cannot be used to accurately ascertain the relationship. Subsequently,  
14 the actual optimal cadence to elicit peak power in BMX cyclists may be different  
15 from that reported by Debraux and Bertucci (2011).  
16  
17  
18  
19  
20  
21  
22  
23  
24  
25  
26  
27  
28  
29  
30  
31  
32  
33

34 The purpose of this study was to investigate the nature of any relationship between  
35 optimal power production and cadence in elite BMX riders and gain actual rather  
36 than predictive data. Due to a shortage of standardised testing protocols a broad  
37 range of cadences were employed (i.e. 80, 100, 120 and  $140\text{revs}\cdot\text{min}^{-1}$ ).  
38  
39  
40  
41  
42  
43

## 44 **Methods**

### 45 **Participants**

46  
47 Seventeen riders in the United Kingdom (UK) currently hold an elite level licence and  
48 from this population six elite male BMX riders volunteered to participate in the study.  
49  
50 Mean rider characteristics were age  $20\pm 2\text{yrs}$ , stature  $169.0\pm 5.0\text{cm}$ , body mass  
51  $68\pm 4\text{kg}$  and body fat  $10\pm 3\%$ . Stature was recorded using a Harpenden stadiometer  
52 (Cranlea, UK) to the nearest 0.1cm, whilst body mass and body fat were determined  
53  
54  
55  
56  
57  
58  
59  
60

1  
2  
3 using air displacement plethysmography (Bod Pod, Life Systems International, USA).  
4  
5 All participants had previous experiences of using laboratory cycle ergometers in  
6  
7 isokinetic mode as adopted in the current study. Written and informed consent was  
8  
9 obtained from participants and a detailed description of the test protocol was issued  
10  
11 to them prior to the study. The study was approved by the University of Derby's  
12  
13 Ethics Human Studies Board and in accordance with the Declaration of Helsinki.  
14  
15  
16  
17  
18

### 19 Experimental Design

20  
21 The relationship between power and cadence in elite BMX cycling was determined  
22  
23 by each subject performing three repeated sprint tests on a Laboratory Schoberer  
24  
25 Rad Messtechnik (SRM) 8 strange gauge cycle ergometer in isokinetic mode. The  
26  
27 ergometer was configured and adapted to more accurately resemble a BMX bike  
28  
29 used in competition. This was achieved through the fitting of a standard 70cm  
30  
31 straight bar to the ergometer, along with Shimano SPD pedals, and a crank length of  
32  
33 175cm. The bar was individually adjusted by each rider to their preferred height prior  
34  
35 to the test. The saddle was lowered so it did not interfere with the rider when  
36  
37 performing each sprint. An inertial load of 50.2kg·m<sup>2</sup> was added to the cycle  
38  
39 ergometer which according to Debraux et al. (2013) equates to a standard BMX gear  
40  
41 ratio of 43 (front chain ring)/16 (rear chain ring). Sampling frequency was set to 2 Hz.  
42  
43  
44  
45  
46  
47

48 Prior to administration of the testing protocol each rider performed a structured self-  
49  
50 paced warm up in a seated position, and a series of short standing sprints. Each  
51  
52 participant then performed three 10-second sprints in a standing position and was  
53  
54 encouraged to reach maximal power in the shortest possible duration. Following this,  
55  
56 mean time of the three sprints was calculated. Each rider performed the sprints from  
57  
58  
59  
60

1  
2  
3 a stationary position with their self-selected leg in the lead position. Ten-minute rest  
4 periods were provided in between tests and then the riders repeated the test protocol  
5  
6  
7 at a different cadence. The three sprints were performed at cadences of 80, 100, 120  
8  
9  
10 and 140revs·min<sup>-1</sup>. The rider's absolute values for peak power and time to peak  
11  
12 power were recorded. The cadence was electromagnetically restricted by the SRM  
13  
14 cycle ergometer. The cadences were randomly assigned and the riders were not  
15  
16 informed of the cadence selection prior or during the test. Data from all six riders'  
17  
18 sprints were recorded using SRMWin software version 5.  
19

### 20 21 22 23 Statistical analyses

24  
25 Data was initially screened for missing and implausible values and assumptions for  
26  
27 normality, linearity and homogeneity of variances were conducted. The independent  
28  
29 variable in the analysis was cadence (80,100, 120, 140revs·min<sup>-1</sup>). Whilst the two  
30  
31 dependant variables were peak power and time to peak power. Two within groups  
32  
33 repeated measure analysis of variance (ANOVA) were used to determine  
34  
35 significance. Where a significant difference was observed, Bonferroni pairwise  
36  
37 comparisons were used to determine where the differences lay. Where sphericity  
38  
39 was violated a Greenhouse-Geiser correction was used.  
40  
41  
42  
43  
44

45  
46 Due to the relatively small sample size, partial eta squared was used to determine  
47  
48 the degree of total association between an effect and the dependent variable. Partial  
49  
50 eta squared were interpreted based on their magnitude, where a value between 0.0 -  
51  
52 0.1 indicates a small effect, 0.1 - 0.3 a medium effect, 0.3 - 0.5 a moderate effect  
53  
54 and >0.5 is a large effect (Tolmie et al., 2011). All statistical analyses were  
55  
56 conducted using IBM Statistical Package for the Social Sciences statistical version  
57  
58  
59  
60



8

19 (IBM inc., Chicago IL). For all statistical analysis, a  $P < 0.05$  was accepted as the level of significance.

## Results

The main area of interest in this study was whether cadence selection has an effect on peak power and time to peak power in elite BMX cyclists. Analysis of the within groups repeated measure ANOVA revealed no significant differences between the cadences (80, 100, 120 and 140revs·min<sup>-1</sup>) for peak power ( $F(1,17)=.799$ ;  $p=.424$ ;  $\eta^2 =0.045$ ), and time to peak power ( $F(1,17)=.691$ ;  $p=.532$ ;  $\eta^2 =0.121$ ) between the selected cadences.

The riders' mean and individual results from the three sprints are highlighted in table 1, whilst figure one gives a comparative view of the riders' mean results.

////////////////////////////////////insert Table 1 //////////////////////////////////////

The optimal relationship between cadence and time to peak power production was achieved at a cadence of 120revs·min<sup>-1</sup> in a time of 2.50±1.07s. The highest cadence of 140revs·min<sup>-1</sup> and lowest cadence of 80revs·min<sup>-1</sup> resulted in the greatest time to peak power production, 3.50±0.88s, 3.50±0.80s respectively (see figure 1). A large effect size was also noted when comparing the dependant variable of time to peak power (120revs·min<sup>-1</sup>, 2.50±1.07s) to effect variables of 80, 100 and 140revs·min<sup>-1</sup> revs: 80revs·min<sup>-1</sup> ( $F(2,15)=2.667$ ;  $p=.284$ ;  $\eta^2 =0.800$ ), 100revs·min<sup>-1</sup> ( $F(2,15)=24.832$ ;  $p=.039$ ;  $\eta^2 =0.974$ ), 140revs·min<sup>-1</sup> ( $F(2,15)=44.167$ ;  $p=.006$ ;  $\eta^2 =0.967$ ). The results demonstrate that a difference in time to peak power occurred when comparing them to the optimal cadence of 120revs·min<sup>-1</sup>.

The optimal relationship between cadence and peak power occurred at a cadence of 100revs·min<sup>-1</sup> (1105±139W), whilst the cadence of 140revs·min<sup>-1</sup> resulted in the lowest peak power (1046±175W) of all the cadences. Similar to the results found for time to peak power production, the peak power results demonstrate that there was a difference between the peak powers attained by the riders when restricted by each of the cadences. A large effect size was found between all the variable cadences (80,120,140revs·min<sup>-1</sup>): 80revs·min<sup>-1</sup> (F(2,15)=3.162; p=.266;  $\eta^2$  =0.960), 120revs·min<sup>-1</sup> (F(2,15)=4.348; p=.203;  $\eta^2$  =0.970), 140revs·min<sup>-1</sup> (F(2,15)=12.350; p=0.077;  $\eta^2$  =0.989).

//////////////////////////////////// Insert Figure 1////////////////////////////////////

## Discussion

The purpose of the current study was to determine the relationship between power and cadence in elite BMX racing through a controlled laboratory based study. The results show that peak power was achieved at a cadence of 100revs·min<sup>-1</sup>, whilst time to peak power was attained at a higher cadence of 120revs·min<sup>-1</sup> (see figure 1). Therefore, a cadence range of between 100 -120revs·min<sup>-1</sup> was found to be the optimal for a BMX rider. Research has ascertained the optimal cadence range for other cycling disciplines (Abbiss et al., 2009. Dorel et al. 2005), but the current paper is the first to infer an optimal cadence for BMX cycling. The importance of these findings has implications for coaches and riders when selecting gear ratios for competition and training with the potential to affect future race outcomes.

Previous research has identified that cadence is one of the few variables a cyclist can adjust to manage performance and fatigue (Ansley & Cangle, 2009). This is

1  
2  
3 achieved by a rider consciously altering their cadence (i.e. leg speed) or  
4  
5 mechanically through increasing or decreasing the bikes' gear ratio. Therefore,  
6  
7 ascertaining the BMX rider's optimal cadence that enables optimal power generation  
8  
9 is crucial in the selection of a gear ratio. Gardener et al. (2007) analysed the power  
10  
11 cadence relationship in elite velodrome track sprinters and found the peak power  
12  
13 occurred at  $212 \pm 3.5 \text{ revs} \cdot \text{min}^{-1}$ . It could therefore be assumed, as BMX cycling is also  
14  
15 a sprint type event, that the cadence power values would be similar. However, as  
16  
17 these results demonstrate, peak power outputs were produced at a lower cadence  
18  
19 than previously reported for other sprint cycling disciplines. Based on the findings in  
20  
21 this study the authors agree with Abiss et al (2009) that optimal cadence power  
22  
23 relationship is cycling discipline specific.  
24  
25  
26  
27  
28

29  
30 One of the few studies to examine the cadence power relationship in BMX riders  
31  
32 suggested that maximal power was produced at relatively low cadences (i.e.  
33  
34  $122 \pm 18 \text{ revs} \cdot \text{min}^{-1}$ . Debraux, 2011) for a sprint event. One possible explanation for  
35  
36 the variation in Debraux's findings may be due to research design and data  
37  
38 collection procedures. For instance Debraux (2011) extrapolated the optimal power  
39  
40 cadence relationship, rather than directly measuring the relationship in five male and  
41  
42 two female BMX riders. Furthermore, Debraux (2011) reported that an increase in  
43  
44 load would result in an increase in peak power. The present study found the opposite  
45  
46 occurred as the highest load of  $80 \text{ revs} \cdot \text{min}^{-1}$  produced the second lowest peak  
47  
48 power ( $1060 \pm 69 \text{ W}$ ) of all the cadences tested (see table 1). This finding in particular  
49  
50 may influence the choice of gear selection for a BMX rider. The implications of these  
51  
52 findings suggest any decision to employ a high gear ratio, which in turn increases the  
53  
54 load, does not appear to have an optimal impact on peak power. However, the actual  
55  
56  
57  
58  
59  
60

1  
2  
3 gear ratios above and below a standard 43/16 would still need to be verified. Whilst  
4  
5 these findings have been established in a laboratory environment, further research in  
6  
7 a BMX track environment is worthy of consideration.  
8  
9

10  
11  
12 The second finding of this study was the relationship between cadence and time of  
13  
14 power production. The difference in the time of power production between the  
15  
16 cadences (see table 1) may not appear to be significant. However, the application of  
17  
18 these values when compared to actual race data reveals the importance of the  
19  
20 findings and optimal cadence. According to publically accessible data (www.bmx-  
21  
22 results.com) the variation in finish line times for elite level BMX races are marginal.  
23  
24 Data from 175 races in 4 countries during the 2012 World Cup Supercross Series  
25  
26 revealed a mean deviation in finish position of 1<sup>st</sup> to second as  $0.49\pm 0.36$ s and from  
27  
28 1<sup>st</sup> to third place as  $0.95\pm 0.57$ s. The present study ascertained that optimal cadence  
29  
30 selection can result in a 1.0s decrease in time of power production. Based on the  
31  
32 2012 race data and the present study the implications for a rider could be the  
33  
34 difference between placing 1<sup>st</sup> or 4<sup>th</sup>. Furthermore, the current study utilised a 10  
35  
36 second sprint, whilst the data from the 2012 World Cup Series was based on the  
37  
38 whole race lasting  $32.16\pm 3.12$ s (Rylands & Roberts, 2013). As a result this finding  
39  
40 could have a greater effect on overall finish placing's, not just for podium placed  
41  
42 riders, but potentially also for lower ranked riders attaining a podium position.  
43  
44  
45  
46  
47  
48

## 49 **Conclusion**

50  
51  
52 The present study has contributed new research in an area short of empirical  
53  
54 research by investigating the relationship between cadence and power in elite BMX  
55  
56 racing. The study can provide a reference for the minimum level requirements  
57  
58  
59  
60

1  
2  
3 expected for national standard riders. The study suggested that data from other  
4 cycling disciplines cannot be applied to the sport of BMX cycling as it is unique to  
5 that cycling discipline. The main findings from this study are the effect of cadence on  
6 peak power and time of power production. The results from the study could inform  
7 strength and conditioning training to elicit maximal dynamic force of the lower limbs  
8 of BMX riders and help inform gear selection.  
9  
10  
11  
12  
13  
14  
15  
16  
17  
18

19 A potential limitation of the current study was the sampling rate. The minimum  
20 sampling rate of the SRM isokinetic ergometer was 2hz. Alternative testing  
21 equipment could have been used and a greater data set recorded. However, few  
22 powermeters currently allow the accurate assessment of field-based torque analysis.  
23  
24  
25  
26  
27  
28

29 The number of riders tested in the study appears to be low and could be seen as a  
30 limitation of the study. However, in the UK at the time of data collection only 17 elite  
31 male BMX riders held a British Cycling Federation elite race licence. Therefore, the  
32 sample size used in this study constitutes 65% of the elite BMX population in the UK.  
33 To further this line of study it is recommended that future BMX studies look at the  
34 effect of gear selection on peak power and time to optimal power in the BMX track  
35 environment.  
36  
37  
38  
39  
40  
41  
42  
43  
44  
45  
46

### 47 **Acknowledgments**

48 The authors gratefully acknowledge the British Cycling Federation Coach Jeremy  
49 Hayes for his time and dedication to the research project.  
50  
51  
52  
53  
54  
55  
56  
57  
58  
59  
60

**Reference**

- Abbiss, C. R., Peiffer, J. J., Laursen, P. B. (2009). Optimal cadence selection during cycling. *International Sport Medicine Journal*, 10(1), 1-15.
- Ansley, L., Cangle, P. (2009). Determinants of "optimal" cadence during cycling. *European Journal of Sport Science*, 9(2), 61-85.
- Bertucci, W. M., Hourde, C. (2011). Laboratory testing and field performance in BMX riders. *Journal of Sports Science and Medicine*, 10(2), 417-419.
- Craig, N. P., Norton, K. I. (2001). Characteristics of a track cyclist. *Sports Medicine*, 37(7), 457-468.
- Cohen, J. (1962). The statistical power of abnormal-social psychological research: a review. *Journal of Abnormal and Social Psychology*, 65(3), 145-153.
- Dorel, S., Hautier, C. A., Rambaud, D., Van Praagh, E., Lacour, J. R., Bourdin, M. (2005). Torque and Power-Velocity Relationships in Cycling: Relevance to Track Sprint Performance in World-Class Cyclists. *International Journal of Sports Medicine*, 26(9), 739-746.
- Debraux, P., Bertucci, W. (2011). Determining factors of the sprint performance in high-level BMX riders. *Computer Methods in Biomechanics and Biomedical Engineering*, 14(1), 53-55.
- Debraux, P., Manolova, A. V., Soudain-Pineau, M., Hourde, C., Bertucci, W. (2013). Maximal torque and power pedaling rate relationships for high level BMX riders in field tests. *Journal of Science in Cycling*, 2(1), 51-57.
- Gardner, S. A., Martin, J. C., Martin, D. T., Barras, M., Jenkins, D.G. (2007). Maximal torque- and power-pedaling rate relationships for elite sprint cyclists in laboratory and field tests. *European Journal of Applied Physiology*, 101(3), 287-292.
- Herman, C. W., McGregor, S. J., Allen, H., Bollt, E. M. (2009). Power Capabilities of Elite Bicycle Motocross Racers During Field Testing In Preparation For 2008 Olympics. *Medicine & Science in Sports & Exercise*, 41(5), 306-307.
- Hurst, H. T., Swarén, M., Hébert-Losier, K., Ericsson, F., Holmberg, H-C. (2012). Anaerobic Power and Cadence Characteristics of Elite Cross-Country and Downhill Mountain Bikers. *Proceedings of the 17th Annual Congress of the European College of Sports Sciences*, (Bruges, July 2012).
- Mateo, M., Blasco-Lafarga, C., Zabala, M., Hernández, M. (2011). Pedalling power and speed production Vs. Technical factors and track difficulty in bicycle motor cross cycling. *Journal of Strength and Conditioning Research*, 25(12), 3248-3256.

- 1  
2  
3  
4 Rylands, L. Roberts, S. J., Cheetham, M., Baker, A. (2014). Velocity production in  
5 elite BMX Riders: A field based Study Using SRM power meter. *Journal of*  
6 *Exercise Physiology*, 16(3), 14-23.  
7
- 8 Tolmie, A., Muijs, D., & McAteer, E. (2011). Quantitative methods in educational and  
9 social research using SPSS. Berkshire, England: Open University Press.  
10
- 11 Sargeant, A. J., Hoinville, E., Young, A. (1981). Maximal leg force and power output  
12 during short term dynamic exercises. *Journal of Applied Physiology*, 51(5), 1175-  
13 1182.  
14  
15
- 16 Zabala, M., Requena, B., Sanchez-munoz, C., Gonzalez-Badillo, J., Garcia, I.,  
17 Oopik, V., Paasuke, M. (2008). Effects of sodium bicarbonate ingestion on  
18 performance and perceptual responses in a laboratory-simulated BMX cycling  
19 qualification series. *Journal of Strength and Conditioning research*, 22(5), 1646-  
20 1653.  
21  
22
- 23 Zabala, M., Sánchez-Muñoz, C., Mateo, M. (2009). Effects of the administration of  
24 feedback on performance of the BMX cycling gate start. *Journal of Sports*  
25 *Science and Medicine*, 8(3), 393-400.  
26
- 27 Vandewalle, H. G., Heller, J. P., Monod, H. (1985). All out anaerobic capacity  
28 tests on cycle ergometers: a comparative study on men and women.  
29 *European Journal of Applied Physiology*, 54(2), 222-229.  
30  
31  
32  
33  
34  
35  
36  
37  
38  
39  
40  
41  
42  
43  
44  
45  
46  
47  
48  
49  
50  
51  
52  
53  
54  
55  
56  
57  
58  
59  
60

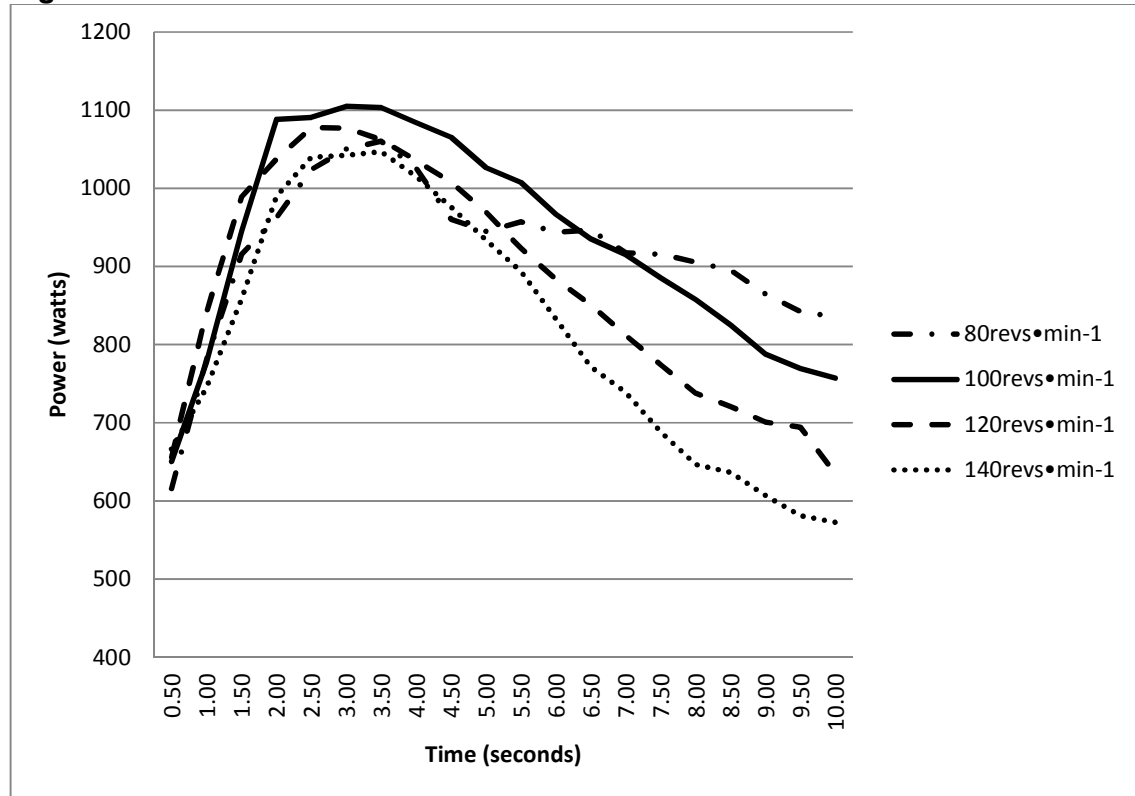
Table 1

	80revs·min <sup>-1</sup>	100revs·min <sup>-1</sup>	120revs·min <sup>-1</sup>	140revs·min <sup>-1</sup>
<b>Rider 1</b>				
Time to peak power(s)	2.50	2.50	2.50	2.50
Peak power(W)	1079	1055	991	1032
<b>Rider 2</b>				
Time to peak power(s)	3.00	3.00	2.00	3.50
peak power(W)	1182	1096	1111	1072
<b>Rider 3</b>				
Time to peak power(s)	2.50	3.00	2.50	2.50
peak power(W)	1041	1409	1358	1385
<b>Rider 4</b>				
Time to peak power(s)	3.50	3.00	2.50	2.50
peak power(W)	1142	1076	1071	943
<b>Rider 5</b>				
Time to peak power(s)	4.00	2.50	3.00	2.50
Peak Power(W)	1021	1070	986	1019
<b>Rider 6</b>				
Time to peak power(s)	4.50	5.50	5.00	4.50
peak power(W)	1012	1052	1012	905
<b>Mean Results</b>				
Time to peak power(s)	3.50 ± 0.8	3.00 ± 1.13	2.50 ± 1.07	3.50 ± 0.88
Peak power(W)	1060 ± 69	1105 ± 139	1077 ± 141	1046 ± 175

Individual riders peak power and time to peak power at 80, 100, 120 and 140revs·min<sup>-1</sup>. Peak power = F (3,15)=0.691; p= 0.572;  $\eta^2 = 1.21$ . Time of peak power = F 3, 51)=0.799; p=.420;  $\eta^2 = 0.045$ .



Figure 1



Results from 10 seconds sprint on a cycle ergometer were the cadence was restricted to 80, 100, 120 and 140 revs·min<sup>-1</sup>. Graph shows mean results for all six riders' peak power and power development