



University of Warwick institutional repository: <http://go.warwick.ac.uk/wrap>

This paper is made available online in accordance with publisher policies. Please scroll down to view the document itself. Please refer to the repository record for this item and our policy information available from the repository home page for further information.

To see the final version of this paper please visit the publisher's website. Access to the published version may require a subscription.

Author(s): G. Verth, T. Van Doorselaere, M. Goossens, R. Erdélyi  
Article Title: Spatial magneto-seismology: effect of density stratification on the first harmonic amplitude profile of transversal coronal loop oscillations  
Year of publication: 2007  
Link to published article:  
<http://dx.doi.org/10.1051/0004-6361:20078086>  
Publisher statement: © ESO 2007. Verth, G. et al. (2007). Spatial magneto-seismology: effect of density stratification on the first harmonic amplitude profile of transversal coronal loop oscillations. *Astronomy & Astrophysics*, Vol.475(1), pp.341-348

# Spatial magneto-seismology: effect of density stratification on the first harmonic amplitude profile of transversal coronal loop oscillations

G. Verth<sup>1</sup>, T. Van Doorselaere<sup>2</sup>, R. Erdélyi<sup>1</sup>, and M. Goossens<sup>3</sup>

<sup>1</sup> Solar Physics and Space Plasma Research Centre (SP<sup>2</sup>RC), University of Sheffield, Hicks Building, Hounsfield Road, Sheffield, S3 7RH, UK

e-mail: [G.Verth;Robertus]@sheffield.ac.uk

<sup>2</sup> Physics Department, University of Warwick, Coventry CV4 7AL, UK

e-mail: t.van-doorselaere@warwick.ac.uk

<sup>3</sup> Centrum voor Plasma Astrofysica, KU Leuven, Celestijnenlaan 200B, 3001 Heverlee, Belgium

e-mail: Marcel.Goossens@wis.kuleuven.be

Received 14 June 2007 / Accepted 22 August 2007

## ABSTRACT

**Context.** The new generation of extreme-ultraviolet (EUV) imagers onboard missions such as the Solar Dynamics Observatory (SDO) and Solar Orbiter (SO) will provide the most accurate spatial measurements of post-flare coronal loop oscillations yet. The amplitude profiles of these loop oscillations contain important information about plasma fine structure in the corona.

**Aims.** We show that the position of the anti-nodes of the amplitude profile of the first harmonic of the standing fast kink wave of a coronal loop relate to the plasma density stratification of that loop.

**Methods.** The MHD kink transversal waves of coronal loops are modelled both numerically and analytically. The numerical model implements the implicit finite element code POLLUX. Dispersion relations are derived and solved analytically. The results of the two methods are compared and verified.

**Results.** Density stratification causes the anti-nodes of the first harmonic to shift towards the loop footpoints. The greater the density stratification, the larger the shift. The anti-node shift of the first harmonic of a semi-circular coronal loop with a density scale height  $H = 50$  Mm and loop half length  $L = 100$  Mm is approximately 5.6 Mm. Shifts in the Mm range are measureable quantities providing valuable information about the subresolution structure of coronal loops.

**Conclusions.** The measurement of the anti-node shift of the first harmonic of the standing fast kink wave of coronal loops is potentially a new tool in the field of solar magneto-seismology, providing a novel complementary method of probing plasma fine structure in the corona.

**Key words.** Sun: corona – Sun: magnetic fields – Sun: oscillations – Sun: fundamental parameters

## 1. Introduction

Post-flare transversal coronal loop oscillations have been observed many times using the high-resolution EUV imager onboard the Transition Region And Coronal Explorer (TRACE) (see e.g., Aschwanden et al. 1999a, 2002; Nakariakov et al. 1999; Verwichte et al. 2004). These oscillations were identified as the fundamental mode of the standing fast-kink wave from MHD wave theory developed by e.g., Edwin & Roberts (1983). The theory used models a coronal loop as a straight magnetic cylinder with different external and internal plasma densities, both of which are taken to be constants.

However, it is now clear from EUV observations using, e.g., EIT (Extreme-ultraviolet Imaging Telescope) onboard SOHO (Solar and Heliospheric Observatory) and TRACE, that even in “static” active region coronal loops, the spatial and temporal behaviour of plasma is far more complex. Using emission measures, there is observational evidence that there is density stratification in coronal loops. In younger active regions there have been measurements of “super-hydrostatic” density scale heights

that are up to four times higher than expected (Aschwanden et al. 2000, 2001). On the other hand, loops have been observed in older active regions that are close to hydrostatic equilibrium (Aschwanden et al. 1999b) with density scale heights that can be explained by gravitational stratification. To complicate matters further, significant dynamical behaviour has also been observed in “static” loops, e.g., flows (Brekke et al. 1997; Winebarger et al. 2001, 2002) and cooling events (Winebarger et al. 2003; Schrijver 2001).

In light of these observations, a more realistic theory of fast kink waves has been developed in the past five years to model oscillating coronal loops with inhomogeneous plasma density equilibria. Firstly, spatial variation of density in the radial direction has been included in the analysis leading to a change in period and damping of the MHD waves (Ruderman & Roberts 2002; Goossens et al. 2002; Aschwanden et al. 2003; Van Doorselaere et al. 2004; Arregui et al. 2007). Secondly, spatial variation of density in the longitudinal direction has been included in the analysis leading to changes in the ratios of the

periods of the overtone modes to that of the fundamental mode and to deviations of the eigenfunctions from a single sine term in the longitudinal direction (Díaz et al. 2002; Goossens et al. 2006; Andries et al. 2005b; Dymova & Ruderman 2005; Arregui et al. 2006; McEwan et al. 2006; Erdélyi & Verth 2007, EV07 hereafter; Verth & Erdélyi 2007; Verth 2007). It is expected that this theory can be used in solar magneto-seismology, particularly in applications to the corona, to determine more detailed information about plasma fine structures than was previously possible.

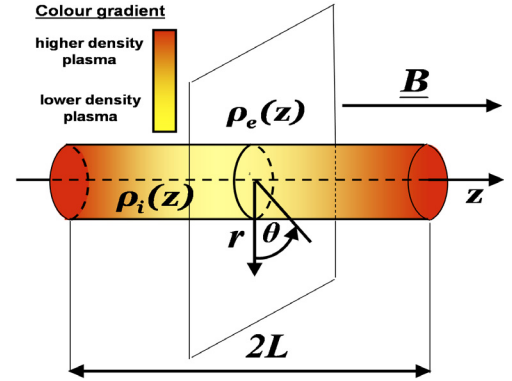
In their paper, EV07 proposed the novel diagnostic method of spatial magneto-seismology (SMS). In relation to standing fast kink waves in the corona, SMS requires measurement of the variance in maximum amplitude as a function of position along a loop. EV07 showed that for the fundamental mode, changes in amplitude caused by the density stratification in the corona are likely to be too small to observe at present. Correspondingly, in the frequency domain, it was shown by Andries et al. (2005a) that, for the expected range of plasma density scale heights in the corona, the frequency of fundamental mode is practically invariant.

However, theoretically it is predicted that the frequencies (e.g., Andries et al. 2005a) and amplitude profiles (e.g., Verth & Erdélyi 2007; Verth 2007) of higher harmonics have a much stronger dependence on density stratification. Since the first harmonic may already have been detected in TRACE data (see Verwichte et al. 2004), this is potentially the most useful higher harmonic to study for the purpose of obtaining more detailed plasma diagnostics of the corona. Therefore, as a continuation of the initial exploratory studies by EV07 regarding the fundamental mode, the dependence of the amplitude profile of the first harmonic on density stratification will be investigated. Importantly, the results will show that the spatial observational signatures of stratification can be used as a new seismological tool. SMS has great potential in light of the improved spatial resolution ground-based (e.g., the Advanced Technology Solar Telescope [ATST]) or space-borne observations (e.g., Hinode, the Solar Dynamics Observatory [SDO] and the Solar Orbiter [SO]).

## 2. Numerical results

In both the numerical investigation in this section and the analytical study in Sect. 3, coronal loops will be modelled as straight magnetic cylinders with length  $2L$  and radius  $R$ . With cylindrical coordinates  $(r, \phi, z)$ , the plasma densities both outside ( $\rho_e$ ) and inside ( $\rho_i$ ) the tube are allowed to be arbitrary functions of  $z$  and the magnetic field,  $\mathbf{B}$  is constant and parallel to the cylinder axis (see Fig. 1). The effects of varying the equilibrium density in the radial direction are neglected here to focus on the effects of the longitudinal variation on the eigenfunctions of the first harmonic. For standing fast kink modes, the amplitude profile, denoted by  $\psi_n(z)$ , is proportional to the eigenmode of the radial velocity component and is unique up to a constant scaling factor (subscript  $n = 1, 2, 3, \dots$  is mode number). To find the eigenfrequencies, denoted by  $\omega_n$  and radial velocity eigenmodes of the employed coronal loop model, the numerical code POLLUX is used, originally developed by Van der Linden (1991). POLLUX was recently utilised to compute the frequencies of the fundamental kink oscillations ( $n = 1$ ) in coronal loops (Arregui et al. 2005).

The code discretizes the radial direction ( $r$ ) with finite elements, and the longitudinal direction ( $z$ ) with Fourier components. It calculates the eigenvalues and eigenmodes of the linearized, resistive MHD equations by using a shooting method.



**Fig. 1.** The equilibrium configuration of a magnetic cylinder with longitudinally varying density.

To investigate the possible effects of density stratification on the amplitude profile of kink oscillations, a reasonable physical form of  $\rho_i(z)$  in the corona must be assumed. It is important to stress at this point that only the effect of a stratified plasma in static equilibrium will be addressed in the present paper. For completeness, a theory must also be developed that quantifies the effects of observed dynamical processes, such as flows on fast kink oscillations. In semi-circular coronal loops where the plasma is close to hydrostatic equilibrium, a reasonable assumption for the density profile is

$$\rho_i(z) = \rho_f \exp \left[ - \frac{2L}{\pi H} \cos \left( \frac{\pi z}{2L} \right) \right], \quad (1)$$

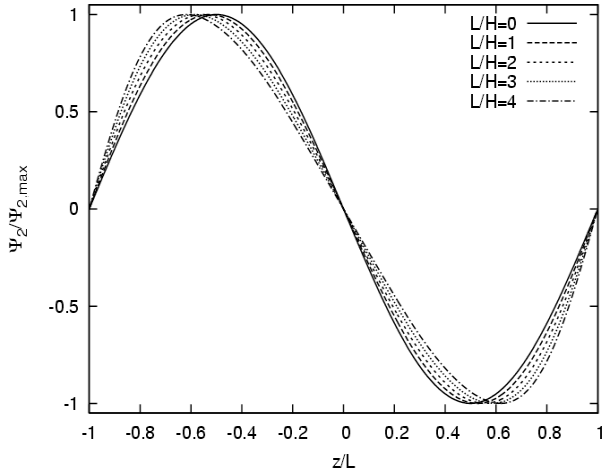
where  $\rho_f$  is the footpoint density of the loop and  $H$  the density scale height. The external density  $\rho_e(z)$  is taken to be directly proportional to  $\rho_i(z)$ ,

$$\rho_e(z) = \chi \rho_i(z) \quad \text{where } \chi \in (0, 1). \quad (2)$$

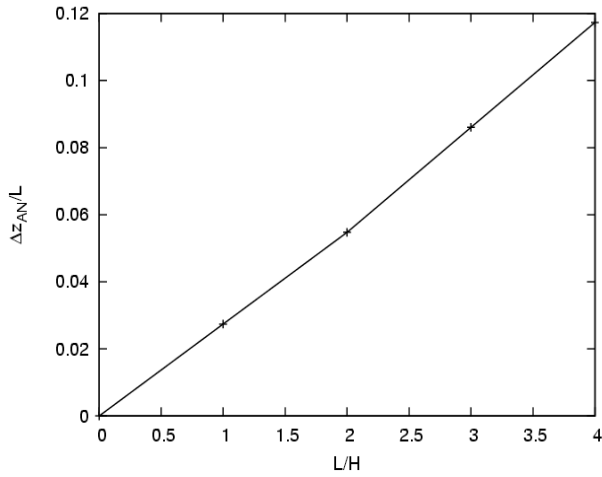
It is observationally well-established that  $R \ll L$ . In the simulations for the present paper, parameter  $R/L$  is fixed at 0.006. All the other physical parameters such as  $\rho_f$ ,  $L/H$ ,  $B$ , and  $\chi$  are free.

Equilibrium quantities, as explained before, are Fourier-analysed in the  $z$ -direction in POLLUX. Therefore, deviations occur between the imposed density profile and the actual profile used in the computations. These deviations become larger for a stronger stratification. However, Arregui et al. (2005) compared the numerically calculated eigenfrequencies to the analytically established frequencies (Andries et al. 2005b). They found that the differences in the frequencies introduced by deviations in the longitudinal density profile are negligible.

In the case of constant longitudinal density, the amplitude profile of the first harmonic ( $n = 2$ ) is simply the first sine term in the Fourier series. However, longitudinal density stratification causes a different coupling between different longitudinal wave numbers. This means that the 1st sine term (with one node at the loop top) couples to the 3rd sine term (with three nodes along the loop). The superposition of these sine terms causes a distortion in the shape of the eigenfunction of the first harmonic. In fact, longitudinal density stratification causes the anti-nodes of the first harmonic to shift towards the footpoints of the loop, as also pointed out by Verth & Erdélyi (2007) and Verth (2007). This property is illustrated in Fig. 2 for the numerically calculated normalised eigenfunctions  $\psi_2/\psi_{2\max}$  for different values of  $L/H$ . The size of the shift is greater for stronger stratification. Interestingly, it will be shown in Sect. 3 that the anti-node shift,



**Fig. 2.** Comparison of different levels of stratification. Normalised amplitude profiles  $\psi_2/\psi_{2,max}$  are plotted against  $z/L$  for various values of  $L/H$ .



**Fig. 3.** Normalised anti-node shift,  $\Delta z_{AN}/L$  against  $L/H$ .

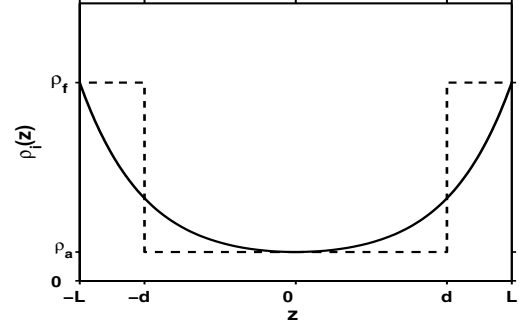
$\Delta z_{AN}/L$  (normalised to  $L$ ) is only a function of  $L/H$ . This simple one-to-one relationship derived from the numerical simulations is shown in Fig. 3. For realistic coronal values of  $L/H$ , the relationship is linear to a very good approximation and can be calculated that

$$\frac{\Delta z_{AN}}{L} = 0.028 \frac{L}{H}. \quad (3)$$

Although the constant of proportionality in Eq. (3) is relatively small, this can still lead to a significant spatial shift in the anti-nodes, since by their nature, coronal loops are very long. For a semi-circular loop with plausible coronal values of  $L = 100$  Mm and  $H = 50$  Mm, the anti-node shift would be 5.6 Mm. This is well within the resolution capabilities of current observational facilities; hence, this property can be used as a new seismological tool to measure density scale height in the corona.

### 3. Analytical results

For analytical analysis of the anti-node shift, the equilibrium model of coronal loops is the same as for the numerical investigation in Sect. 2 (see Fig. 1). The coronal plasma is considered to be cold and ideal, and the loop is assumed to have footpoints fixed somewhere in the lower solar atmosphere. As mentioned



**Fig. 4.** Comparison of step density profile (7) to exponential profile (1).

previously in Sect. 2, coronal loops have  $R \ll L$ , so the thin flux tube approximation will be applied. This approximation has been used before by Dymova & Ruderman (2005) and EV07 to model fast kink waves in loops with an arbitrary, longitudinal density profile. In addition to being physically relevant, it has the advantage of making the MHD equations more tractable for obtaining analytical solutions for a first insight.

With these valid assumptions, Dymova & Ruderman (2005) show that the MHD equations can be linearised, and a simple second order ordinary differential equation can be derived, which describes the standing fast kink modes of the loop in terms of the maximum radial velocity at the tube boundary  $r = R$ . This equation can easily be re-written in terms of the maximum amplitude as a function of position  $z$  along a loop (see EV07),

$$\frac{d^2 \psi_n}{dz^2} + (\alpha \omega_n)^2 \rho_i(z) \psi_n = 0, \quad (4)$$

with boundary conditions

$$\psi_n = 0 \quad \text{at} \quad z = \pm L. \quad (5)$$

The  $\alpha$  term in Eq. (4) contains all the physical constants of the model such that

$$\alpha = \frac{1}{B} \sqrt{\frac{\mu(\chi + 1)}{2}}, \quad (6)$$

where  $B$  is the magnetic field strength,  $\mu$  the magnetic permeability, and  $\chi$  the ratio of  $\rho_e(z)/\rho_i(z)$  previously defined in Eq. (2).

We have no knowledge of an analytical solution for Eq. (4) when  $\rho_i(z)$  is described by profile (1). However, useful analytical insight into the behaviour of the solution can be gained by applying appropriate approximations to (1). In Sect. 3.1, density profile (1) will first be approximated by step functions, and then in Sect. 3.2 a much more refined approximation to density profile (1) will be made using a rational function.

#### 3.1. Step density profile

A simple approximation to density profile (1) can be made using step functions (see Fig. 4) as follows

$$\rho_i(z) = \begin{cases} \rho_a, & z \in [-d, d] \\ \rho_f, & z \in [-L, -d) \cup (d, L], \end{cases} \quad (7)$$

where  $\rho_f$  is the footpoint density,  $\rho_a$  the apex density, and both are constants. This approximation most clearly shows how the shifts of anti-nodes are caused by the density contrast between the footpoints and apex of a given loop. EV07 previously solved (4) and (5) with density profile (7) for the odd integer modes ( $n = 1, 3, 5, \dots$ ), since in the first place, these authors

wanted to illustrate the effect of density stratification on the fundamental mode ( $n = 1$ ). Here, a similar mathematical approach is used to study the first harmonic, which is an even integer mode ( $n = 2$ ). Density profile (7) gives contact discontinuities at  $z = \pm d$ ; therefore, the following boundary conditions have to be satisfied (see EV07 for details),

$$[\psi_2] = 0, \quad \left[ \frac{d\psi_2}{dz} \right] = 0, \quad (8)$$

where the square brackets indicate the jump of a quantity at  $z = \pm d$ .

Along with boundary conditions (5), the symmetry of density profile (7) about  $z = 0$ , implies that the first harmonic must also have

$$\psi_2(0) = 0, \quad (9)$$

$$\frac{d\psi_2}{dz}(0) = A_2, \quad (10)$$

where  $A_2$  is the arbitrary gradient of the amplitude at the loop apex. Solving (4) locally in each region of  $z$  and matching the solutions together at the density discontinuity so that  $\psi_2(z)$  and its derivative are continuous, in accordance with (8), gives the solution for the amplitude of the first harmonic as

$$\psi_2(z) = \begin{cases} A_2 \sin(\alpha\omega_2 \sqrt{\rho_a} z), & z \in [-d, d] \\ \text{sgn}(z) B_2 \cos(\alpha\omega_2 \sqrt{\rho_f} z) \\ + C_2 \sin(\alpha\omega_2 \sqrt{\rho_f} z), & z \in [-L, -d) \cup (d, L], \end{cases} \quad (11)$$

where

$$B_2 = \frac{A_2}{\sqrt{\rho_f}} \left\{ \sqrt{\rho_f} \cos(\alpha\omega_2 \sqrt{\rho_f} d) \sin(\alpha\omega_2 \sqrt{\rho_a} d) - \sqrt{\rho_a} \sin(\alpha\omega_2 \sqrt{\rho_f} d) \cos(\alpha\omega_2 \sqrt{\rho_a} d) \right\}, \quad (12)$$

and

$$C_2 = \frac{A_2}{\sqrt{\rho_f}} \left\{ \sqrt{\rho_f} \sin(\alpha\omega_2 \sqrt{\rho_f} d) \sin(\alpha\omega_2 \sqrt{\rho_a} d) + \sqrt{\rho_a} \cos(\alpha\omega_2 \sqrt{\rho_f} d) \cos(\alpha\omega_2 \sqrt{\rho_a} d) \right\}, \quad (13)$$

only if the following equation is satisfied (because of the boundary conditions [5]),

$$\tan(\alpha\omega_2 \sqrt{\rho_f} L) = \frac{\sqrt{\rho_f} \tan(\alpha\omega_2 \sqrt{\rho_a} d) - \sqrt{\rho_a} \tan(\alpha\omega_2 \sqrt{\rho_f} d)}{\sqrt{\rho_f} \tan(\alpha\omega_2 \sqrt{\rho_f} d) \tan(\alpha\omega_2 \sqrt{\rho_a} d) + \sqrt{\rho_a}}. \quad (14)$$

In the specific case of  $\rho_a = \rho_f$ , ( $\rho_i(z) = \rho_c$ , say), the RHS of Eq. (14) is zero, giving

$$\alpha\omega_2 \sqrt{\rho_c} L = \pi \quad (15)$$

and solution (11) simplifies to

$$\psi_2(z) = A \sin(\alpha\omega_2 \sqrt{\rho_c} z), \quad z \in [-L, L]. \quad (16)$$

To find the position of the anti-nodes,  $z_{\text{AN}} \in [-L, L]$ , one has to solve

$$\frac{d\psi_2}{dz}(z_{\text{AN}}) = 0. \quad (17)$$

Trivially for case (16),  $z_{\text{AN}} = \pm L/2$  and there is no anti-node shift. To find an analytical expression for the anti-node shift when  $\rho_a \neq \rho_f$ , weak stratification is assumed where  $\rho_a \approx \rho_f \approx \rho_c$  and the small parameter  $\epsilon \ll 1$  is introduced,

$$\epsilon = \frac{L-d}{L}. \quad (18)$$

The parameter  $\epsilon$ , given by Eq. (18), is, therefore, the fraction of loop half length  $L$  at the footpoints where the plasma has a higher density. Weak stratification gives  $z_{\text{AN}} \approx \pm L/2$ , so the small parameter  $\epsilon$  ensures that  $z_{\text{AN}} \in [-d, d]$ . Only  $z_{\text{AN}} \in [0, d]$  is considered here, since by the symmetry of density profile (7) the magnitude of the shift is the same in both  $[-d, 0]$  and  $[0, d]$ . Solution (11), with condition (17) means that the position of  $z_{\text{AN}} \in [0, d]$  is the first positive root of

$$\cos(\alpha\omega_2 \sqrt{\rho_a} z_{\text{AN}}) = 0. \quad (19)$$

The anti-node shift, normalised to  $L$ , is then

$$\frac{\Delta z_{\text{AN}}}{L} = \frac{1}{2} \left( \frac{\pi}{\gamma} - 1 \right), \quad (20)$$

where

$$\gamma = \alpha\omega_2 \sqrt{\rho_a} L. \quad (21)$$

With notation,

$$\kappa = \sqrt{\frac{\rho_a}{\rho_f}}, \quad (22)$$

transcendental Eq. (14) can be rewritten as

$$\left[ \tan(\gamma) - \tan(\gamma\epsilon) \right] + \kappa \left[ \tan\left(\frac{\gamma\epsilon}{\kappa}\right) + \tan(\gamma) \tan(\gamma\epsilon) \tan\left(\frac{\gamma\epsilon}{\kappa}\right) \right] = 0. \quad (23)$$

Since  $\rho_a \approx \rho_f \approx \rho_c$ , it follows that  $\gamma \approx \pi$  and  $\kappa \approx 1$ . The following series approximations can then be made:

$$\tan(\gamma) \approx \gamma - \pi, \quad (24)$$

$$\tan(\gamma\epsilon) \approx \gamma\epsilon + \frac{1}{3}(\gamma\epsilon)^3 \quad (25)$$

and

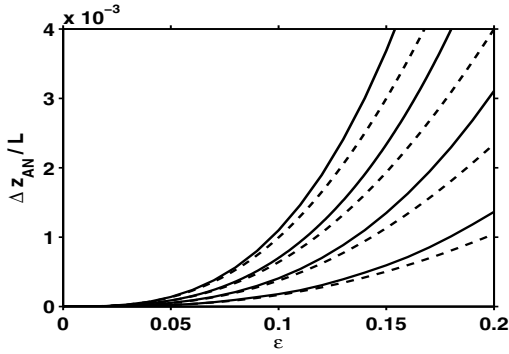
$$\tan\left(\frac{\gamma\epsilon}{\kappa}\right) \approx \frac{\gamma\epsilon}{\kappa} + \frac{1}{3}\left(\frac{\gamma\epsilon}{\kappa}\right)^3. \quad (26)$$

Approximations (25) and (26) are required to the third order to obtain the first nonvanishing terms. Using Eqs. (24)–(26) in Eq. (23) and neglecting terms of higher order than  $\epsilon^3$ , the following cubic equation for  $\gamma$  is derived,

$$\epsilon^2 \left[ \frac{1}{3} \epsilon (1 - \kappa^2) + \kappa^2 \right] \gamma^3 - \pi (\epsilon \kappa)^2 \gamma^2 + \kappa^2 \gamma - \kappa^2 \pi = 0. \quad (27)$$

Interestingly, it can be seen from Eq. (27) that  $\gamma$ , and therefore the anti-node shift (20) is only dependent on the parameters  $\epsilon$  and  $\kappa$ , which define the density profile (7). The shift of the anti-node is therefore totally independent of frequency,  $\omega_2$ , and  $\alpha$  (defined in Eq. (6)), which contains the magnetic field strength  $B$  and the external and internal density contrast term  $\chi$ .

There are various well-known elementary methods that can be used for solving cubic equations (see e.g., Abramowitz & Stegun 1965). It is found that there is one real root of Eq. (27)



**Fig. 5.** Step density profile (7): anti-node shift  $\Delta z_{AN}/L$  against  $\epsilon$  when  $\rho_a/\rho_f = 0.6, 0.7, 0.8, 0.9$  (from top to bottom). The asymptotic solution and numerical solutions are shown by the dashed and solid lines, respectively.

and a pair of complex conjugate roots. The physical solution corresponds to the real root of Eq. (27), which is

$$\gamma = \frac{(2\kappa)^{\frac{2}{3}}}{2\epsilon f_1} (f_1 \sqrt{f_2} + \epsilon \pi f_3)^{-\frac{1}{3}} \left\{ (f_1 \sqrt{f_2} + \epsilon \pi f_3)^{\frac{2}{3}} + (2\kappa)^{\frac{2}{3}} f_4 + \epsilon \pi \kappa [2\kappa (f_1 \sqrt{f_2} + \epsilon \pi f_3)]^{\frac{1}{3}} \right\}, \quad (28)$$

where

$$f_1 = -(\epsilon - 3)\kappa^2 + \epsilon, \quad (29)$$

$$f_2 = \left\{ \epsilon [3\pi^2 \epsilon (\epsilon^2 (3 + 4\pi^2) - 4(3\epsilon - 2)) - 4] + 12 \right\} \kappa^4, \quad (30)$$

$$f_3 = [\epsilon^2 (3 + 2\pi^2) - 3(5\epsilon - 6)] \kappa^4 - 3\epsilon(2\epsilon - 5)\kappa^2 + 3\epsilon^2, \quad (31)$$

and

$$f_4 = [\epsilon(\pi^2 \epsilon + 1) - 3] \kappa^2 - \epsilon. \quad (32)$$

Since it was required to find the root of cubic Eq. (27), the explicit expression for  $\gamma$  shown in (28) is rather complicated. However, the basic behaviour can be understood by inspecting the first few terms of the power-series expansion of (28),

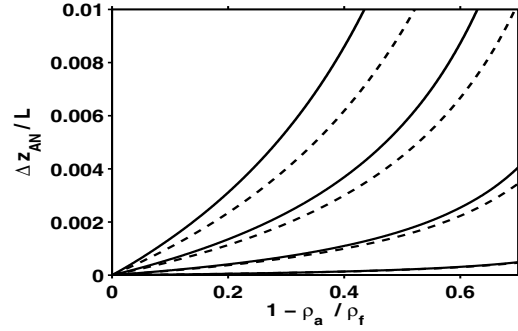
$$\gamma = \pi - \frac{\pi^3}{3} \left( \frac{1}{\kappa^2} - 1 \right) \epsilon + O(\epsilon^5). \quad (33)$$

Combining Eqs. (33) and (20) to first order in  $\epsilon$ ,

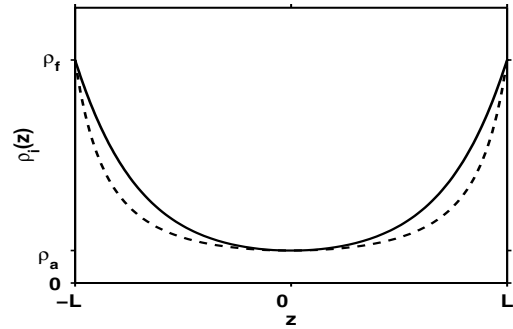
$$\frac{\Delta z_{AN}}{L} \approx \frac{\epsilon \pi^2}{6} \left( \frac{\rho_f}{\rho_a} - 1 \right). \quad (34)$$

In Eq. (34) describing the anti-node shift, definition (22) has been used to give  $\kappa$  in terms of  $\rho_a/\rho_f$ . It can be seen from Eq. (34) that the anti-node shift,  $\Delta z_{AN}/L$ , increases as  $\epsilon$  increases or  $\rho_a/\rho_f$  decreases, i.e., anti-node shift increases as the higher-density footpoint segment of the loop increases in length or as the density contrast becomes greater between the loop footpoints and apex.

These two separate contributions to anti-node shift are illustrated in Figs. 5 and 6, where the asymptotic and numerical solutions of (17) are both plotted for comparison. In deriving the asymptotic solution (28), it was assumed that  $\rho_a$  and  $\rho_f$  were approximately equal, but as can be seen from Figs. 5 and 6, when  $\epsilon \lesssim 0.1$ , the solution still works very well for



**Fig. 6.** Step density profile (7): anti-node shift  $\Delta z_{AN}/L$  against  $1 - \rho_a/\rho_f$  when  $\epsilon = 0.05, 0.1, 0.15, 0.2$  (from bottom to top).



**Fig. 7.** Comparison of smooth density profile (35) with exponential profile (1) shown by the dashed and solid lines, respectively.

much more pronounced stratification. Considering the case when  $\epsilon = 0.1$ , for relatively weak stratification,  $\rho_a/\rho_f = 0.9$ , the difference between the asymptotic and numerical solution is 3%, as would be expected. However, for a much lower density ratio, e.g.,  $\rho_a/\rho_f = 0.4$ , the difference in solutions is still only 10%.

The density ratio,  $\rho_a/\rho_f$ , required to produce observable shifts, i.e.,  $\gtrsim 1$  Mm in a  $L = 100$  Mm loop depends on the value of  $\epsilon$ . If a loop has a relatively large footpoint region with  $\epsilon = 0.2$  (equivalent to 20 Mm), then one must have  $\rho_a/\rho_f \lesssim 0.5$ . However, if the footpoint region is much smaller, e.g.,  $\epsilon = 0.05$  (equivalent to 5 Mm), there must be a much greater density contrast with  $\rho_a/\rho_f \lesssim 0.03$ .

From Figs. 5 and 6, it is also important to note that different values of  $\epsilon$  can result in the same anti-node shift depending on the value of  $\rho_a/\rho_f$ . That completely different density profiles can result in the same anti-node shift is important. Although the generic exponential profile (1) was chosen for the numerical study in Sect. 2, there may also physical conditions in active region post-flare coronal loops where this does not apply. To use the anti-node shift to determine accurate information about plasma density stratification in a loop, one must know the appropriate functional form of  $\rho_i(z)$ .

### 3.2. Smooth density profile

To make a more refined approximation to (1), the rational function

$$\rho_i(z) = \frac{\rho_a}{\left[ 1 - (1 - \kappa) \left( \frac{z}{L} \right)^2 \right]^2} \quad (35)$$

is an appropriate choice since it gives a smooth density profile (see Fig. 7) and Eq. (4) with boundary conditions (5) can be easily solved using only elementary functions (see

Polyanin & Zaitsev 2003). The amplitude of the first harmonic, when the density profile is modelled by Eq. (35), is given by

$$\psi_2(z) = A_2 \sqrt{1 - (1 - \kappa) \left(\frac{z}{L}\right)^2} \sin \left\{ \frac{1}{2} \eta \ln [\xi(z)] \right\}, \quad (36)$$

where

$$\eta = \sqrt{\frac{\gamma^2}{1 - \kappa} - 1} \quad (37)$$

and

$$\xi(z) = \frac{1 + \frac{z}{L} \sqrt{1 - \kappa}}{1 - \frac{z}{L} \sqrt{1 - \kappa}}. \quad (38)$$

Equation (36) satisfying boundary condition (5) means that Eq. (37) can also be written as

$$\eta = 2\pi \ln^{-1} \left( \frac{1 + \sqrt{1 - \kappa}}{1 - \sqrt{1 - \kappa}} \right). \quad (39)$$

Hence the solution (36) is only dependent on two parameters,  $\kappa$  and  $L$ . To find the position of the anti-nodes  $z_{AN}$  (as shown in Sect. 3.1), it is required to solve Eq. (17). By the symmetry of density profile (35), only  $z_{AN} \in [0, L]$  will be considered. Amplitude profile (36) with condition (17) means that  $z_{AN}$  is the first positive root of

$$\frac{z_{AN}}{L} \tan \left[ \frac{1}{2} \eta \ln(\xi_{AN}) \right] = \frac{\eta}{\sqrt{1 - \kappa}}, \quad (40)$$

where  $\xi_{AN} \equiv \xi(z_{AN})$ . To solve transcendental Eq. (40), weak stratification is again assumed. For  $\kappa \approx 1$ , it follows that

$$\xi_{AN} \approx 1. \quad (41)$$

Using L'Hôpital's rule, it can also be shown that

$$\frac{1}{2} \eta \ln(\xi_{AN}) \approx \frac{\pi}{2}. \quad (42)$$

Therefore, the following series approximations are made,

$$\ln(\xi_{AN}) \approx (\xi_{AN} - 1) - \frac{1}{2} (\xi_{AN} - 1)^2 + \frac{1}{3} (\xi_{AN} - 1)^3 \quad (43)$$

and

$$\tan \left[ \frac{1}{2} \eta \ln(\xi_{AN}) \right] \approx \frac{2}{\pi - \eta \ln(\xi_{AN})}. \quad (44)$$

By using (43) and (44), Eq. (40) can be approximated by the following cubic equation

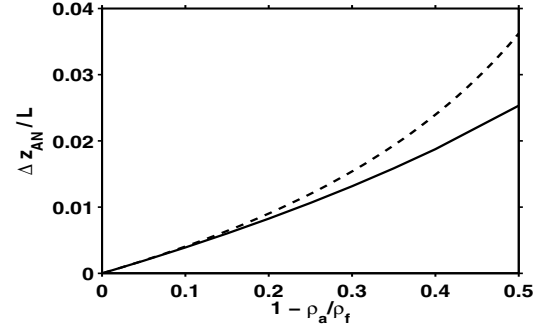
$$\left[ 3 + \eta \left( \frac{10}{3} \eta - \frac{1}{2} \pi \right) \right] \zeta^3 - 3 \left[ 1 + \eta \left( \eta + \frac{1}{2} \pi \right) \right] \zeta^2 + \left[ 1 + \eta \left( \eta + \frac{3}{2} \pi \right) \right] \zeta - \frac{1}{2} \pi \eta = 0, \quad (45)$$

where

$$\zeta = \frac{z_{AN}}{L} \sqrt{1 - \kappa}. \quad (46)$$

From Eq. (46) and by the fact that  $z_{AN}/L \rightarrow 1/2$  as  $\kappa \rightarrow 1$ , the anti-node shift, normalised to  $L$ , is given by

$$\frac{\Delta z_{AN}}{L} = \frac{\zeta}{\sqrt{1 - \kappa}} - \frac{1}{2}, \quad (47)$$



**Fig. 8.** Smooth density profile (35): anti-node shift  $\Delta z_{AN}/L$  against  $1 - \rho_a/\rho_f$ . The asymptotic and numerical solutions shown by the dashed and solid lines, respectively.

where  $\zeta$  (defined by Eq. (46)) is a root of cubic Eq. (45). It is found that Eq. (45) has one real root and a pair of complex conjugate roots. The required root is

$$\zeta = \frac{1}{g_1} \left[ (g_1 \sqrt{g_2} - 3g_3g_4)^{\frac{1}{3}} - 2\eta g_5 (g_1 \sqrt{g_2} - 3g_3g_4)^{-\frac{1}{3}} + 3g_6 \right], \quad (48)$$

where

$$g_1 = 20\eta^2 - 3\pi\eta + 18, \quad (49)$$

$$g_2 = 52\eta^8 - 168\pi\eta^7 + 252\pi^2\eta^6 - 4\pi(117 + 54\pi)\eta^5 + [264 + \pi^2(432 + 81\pi^2)]\eta^4 - 2\pi(81\pi^2 + 216)\eta^3 + (160 + 189\pi^2)\eta^2 - 132\pi\eta + 36, \quad (50)$$

$$g_3 = 8\eta^2 - 9\pi + 6, \quad (51)$$

$$g_4 = 6\eta^4 - 4\pi\eta^3 + 3(4 + \pi^2)\eta^2 - 3\pi\eta + 6, \quad (52)$$

$$g_5 = 2\eta^3 + 9\pi\eta^2 + (2 - 9\pi^2)\eta + 6\pi, \quad (53)$$

and

$$g_6 = 2\eta^2 + \pi\eta + 2. \quad (54)$$

Hence, using the expression for  $\zeta$  given by (48) in Eq. (47), one has an explicit solution for an anti-node shift when there is weak stratification. The asymptotic and numerical anti-node shifts are plotted in Fig. 8 as functions of  $1 - \rho_a/\rho_f$ . The difference between the asymptotic and numerical anti-node shifts is 6% for  $\rho_a/\rho_f = 0.9$  and 11% for  $\rho_a/\rho_f = 0.8$ .

The power-series expansion of the asymptotic anti-node shift (47) is a convergent Laurent series with a singularity at  $\kappa = 1$ . Therefore, one cannot obtain a simple first-order expression for the anti-node shift (equivalent to Eq. (34) for the step density profile), since we need a very large number of terms for the series approximation to obtain a reasonable accuracy near the singularity at  $\kappa = 1$ . However, as can be seen from Fig. 8, the anti-node shift can be more easily approximated as a linear function of  $1 - \rho_a/\rho_f$ . For  $\rho_a/\rho_f \gtrsim 0.7$ ,

$$\frac{\Delta z_{AN}}{L} \approx 0.04 \left( 1 - \frac{\rho_a}{\rho_f} \right). \quad (55)$$

Equation (55) now shows the relatively simple relationship between anti-node shift and the density ratio  $\rho_a/\rho_f$ , i.e., anti-node shift increases as the density contrast becomes greater. This is in qualitative agreement with the previous numerical result (3) and the results for the step profile (34).

Since the difference between the exponential profile (1) and the smooth profile (35) is not large (see Fig. 7), the difference in anti-node shifts should also be small. Assuming that  $\rho_a/\rho_f$  is defined by exponential profile (1), i.e.,

$$\frac{\rho_a}{\rho_f} = \exp\left(-\frac{2L}{\pi H}\right), \quad (56)$$

then for low values of  $L/H$ ,

$$\frac{\rho_a}{\rho_f} \approx 1 - \frac{2L}{\pi H}. \quad (57)$$

Substituting (57) into (55) gives the linear relationship

$$\frac{\Delta z_{AN}}{L} \approx 0.025 \frac{L}{H}. \quad (58)$$

The anti-node shift as a function of  $L/H$  given by (58) is within 11% of the numerical result given by (3). Considering the smooth density profile (35) used as an approximation of the exponential profile (1), this is a satisfactory result. For a coronal loop with  $H = 50$  Mm and  $L = 100$  Mm, approximation (58) gives an error on the amount of anti-node shift of 600 km, which is 1.5 pixels at the resolution of TRACE.

#### 4. Conclusions

To measure plasma density stratification directly in the solar atmosphere using e.g., spectroscopy, one must know precise elemental abundances and at what height and temperature the spectral lines are formed. However, these values may have large uncertainties. Furthermore, direct methods ideally need simultaneous measurements from different lines of sight. Unfortunately, for all the current and near future missions (apart from the Solar TERrestrial Relations Observatory [STEREO]), this will not be possible. Therefore, it is crucial that we have alternative methods for verifying the accuracy of direct measurements. Magneto-seismological methods such as the one proposed in this paper could prove to be invaluable in this regard.

The improved time cadence of the next generation of EUV imagers onboard SDO and SO will provide the best chance yet of observing higher harmonics in post-flare loop oscillations. Therefore, the SMS method proposed in this paper for measuring the anti-node shift of the first harmonic of transversal loop oscillations so as to determine density stratification, offers a promising complementary method of getting information regarding the plasma fine structure in the solar corona. Since anti-node shifts due to density stratification can be expected in the Mm range, resolution should not be a problem.

However, since the EUV imagers can only provide 2D spatial data, uncertainties in shift measurements may be introduced by projection effects. Therefore, one would ideally need an accurate 3D reconstruction of a loop's geometry to correct for this. Much progress has been made recently in developing techniques of reconstructing coronal 2D images in 3D. Some of the most successful approaches so far use stereoscopic methods, magnetic field extrapolation constraints, and loop curvature radius constraints (see Aschwanden 2005, for a detailed discussion). Although the two EUV imagers used in the STEREO mission do not have the time cadence or spatial resolution required for SMS, the quasi-3D images they are capable of producing can only help increase our understanding of the solar corona's complex and fascinating 3D structure.

Uncertainties may also be introduced from a number of different physical processes in active regions. Since plasma fine

structure can be changed by dynamic phenomena such as flow or heating/cooling, this may cause a shift in the anti-node. Furthermore, a shift may occur due to a change in loop length caused by emerging magnetic flux or a flaring event. Hence, further theoretical investigation is required to quantify how these different physical processes affect the standing fast kink mode in coronal loops.

The effect of magnetic stratification on the standing fast kink mode must also be addressed. It is physically reasonable to assume that the magnetic field strength decreases with height in the solar corona. Since the kink speed is proportional to the magnetic field strength, this may play a significant role in the anti-node shift. To our current knowledge, there is no analytical model yet that describes the standing fast kink mode of a magnetic cylinder that has an inhomogeneous magnetic field along its axis, except a work in progress by ourselves. In the past five years, there have been 3D numerical studies of the interaction between fast magnetoacoustic waves and potential/linear force-free magnetic fields extrapolated from magnetogram data (Ofman & Thompson 2002; Terradas & Ofman 2004b; Ofman 2005). Further numerical investigations of this type should prove invaluable in understanding the properties of oscillations in more realistic magnetic field structures.

Since not all the observed oscillations can be considered to be in the linear regime, an even greater theoretical challenge is to understand the properties of nonlinear fast kink waves in magnetic cylinders. Some progress has been made in this area by Terradas & Ofman (2004a) using a 3D MHD numerical simulation. They find that nonlinear kink waves may actually cause a density enhancement at coronal loop tops. Their result could explain emission measure enhancements in oscillating loops observed after a flaring event on 1998 July 14 using TRACE data.

*Acknowledgements.* The authors thank M. Ruderman for a number of useful discussions. R.E. acknowledges M. K  ray for patient encouragement. The authors are also grateful to NSF Hungary (OTKA, Ref. No. TO43741), and the Engineering and Physical Sciences Research Council (EPSRC), UK, for the financial support they received.

#### References

- Abramowitz, M., & Stegun, I. A. 1965, Handbook of Mathematical Functions, (New York: Dover Publications)
- Andries, J., Arregui, I., & Goossens, M. 2005a, ApJ, 624, L57
- Andries, J., Goossens, M., Hollweg, J. V., Arregui, I., & Van Doorselaere, T. 2005b, A&A, 430, 1109
- Arregui, I., Van Doorselaere, T., Andries, J., Goossens, M., & Kimpe, D. 2005, A&A, 441, 361
- Arregui, I., Van Doorselaere, T., Andries, J., Goossens, M., & Kimpe, D. 2006, Phil. Trans. R. Soc. A, 384, 529
- Arregui, I., Andries, J., Van Doorselaere, T., Goossens, M., & Poedts, S. 2007, A&A, 463, 333
- Aschwanden, M. J. 2004, Physics of the Solar Corona: An Introduction (Berlin: Springer-Verlag)
- Aschwanden, M. J. 2005, Sol. Phys., 228, 339
- Aschwanden, M. J., Fletcher, L., Schrijver, C. J., & Alexander, D. 1999a, ApJ, 520, 880
- Aschwanden, M. J., Newmark, J. S., Delaboudini  re, J., et al. 1999b, ApJ, 515, 842
- Aschwanden, M. J., Nightingale, R. W., & Alexander, D. 2000, ApJ, 541, 1059
- Aschwanden, M. J., Schrijver, C. J., & Alexander, D. 2001, ApJ, 550, 1036
- Aschwanden, M. J., De Pontieu, B., Schrijver, C. J., & Title, A. M. 2002, Sol. Phys., 206, 99
- Aschwanden, M. J., Nightingale, R. W., Andries, J., Goossens, M., & Van Doorselaere, T. 2003, ApJ, 598, 1375



- Brekke, P., Kjeldseth-Moe, O., & Harrison, R. A. 1997, *Sol. Phys.*, 175, 511
- Díaz, A. J., Oliver, R., & Ballester, J. L. 2002, *ApJ*, 580, 550
- Dymova, M. V., & Ruderman, M. S. 2005, *Sol. Phys.*, 229, 79
- Edwin, P. M., & Roberts, B. 1983, *Sol. Phys.*, 88, 179
- Goossens, M., Andries, J., & Aschwanden, M. J. 2002, *A&A*, 394, L39-42
- Goossens, M., Arregui, I., & Andries, J. 2006, *Phil. Trans. R. Soc. A.*, 364, 433
- Erdélyi, R., & Verth, G. 2007 *A&A*, 462, 743
- McEwan, M. P., Donnelly, G. R., Díaz, A. J., & Roberts, B. 2006, *A&A*, 460, 893
- Nakariakov, V. M., Ofman, L., DeLuca, E. E., Roberts, B., & Davila, J. M. 1999, *Science*, 285, 862
- Ofman, L. 2005, *AdSpR*, 36, 1572
- Ofman, L., & Thompson, B. J. 2002, *ApJ*, 574, 440
- Polyanin, A. D., & Zaitsev, V. F. 2003, *Handbook of Exact Solutions for Ordinary Differential Equations* (Boca Raton: Chapman & Hall)
- Roberts, B., Edwin, P. M., & Benz, A. O. 1984, *ApJ*, 279, 857
- Ruderman, M. S., & Roberts, B. 2002, *ApJ*, 577, 475
- Schrijver, C. J. 2001, *Sol. Phys.*, 198, 325
- Terradas, J., & Ofman, L. 2004a, *ApJ*, 610, 523
- Terradas, J., & Ofman, L. 2004b, *SOHO 13 – Waves, Oscillations and Small-Scale Transient Events in the Solar Atmosphere: A Joint View from SOHO and TRACE*, ESA SP-547, 469
- Van der Linden, R. A. M. 1991, Ph.D. Thesis, K.U. Leuven
- Van Doorselaere, T., Andries, J., Poedts, S., & Goossens, M. 2004, *ApJ*, 606, 1223
- Verwichte, E., Nakariakov, V. M., Ofman, L., & DeLuca, E. E. 2004, *Sol. Phys.*, 223, 77
- Verth, G. 2007, *Astron. Nachr.*, in press
- Verth, G., & Erdélyi, R. 2007, *The 2nd Solar Orbiter Workshop*, ed. E. Marsch, K. Tsinganos, R. Marsden, & L. Conroy, ESA SP-641
- Winebarger, A. R., DeLuca, E. E., & Golub, L. 2001, *ApJ*, 553, L81
- Winebarger, A. R., Warren, H., van Ballegooijen, A., DeLuca, E. E., & Golub, L. 2002, *ApJ*, 567, L89
- Winebarger, A. R., Warren, H. P., & Seaton, D. B. 2003, *ApJ*, 593, 1164