

SUPPLEMENTARY INFORMATION

for the *Cellulose* publication

Influence of Biological Origin on the Tensile Properties of Cellulose Nanopaper

Katri S. Kontturi,^{1,2} Koon-Yang Lee,³ Mitchell Jones,⁴ William W. Sampson,*⁵ Alexander Bismarck,*⁴ Eero Kontturi*⁶

¹ Department of Chemical Engineering, Imperial College London, South Kensington Campus, SW7 2AZ, UK

² Functional Cellulose, VTT Technical Research Centre of Finland Ltd, 02150 Espoo, Finland

³ Department of Aeronautics, Imperial College London, South Kensington Campus, SW7 2AZ, UK

⁴ Polymer and Composite Engineering (PaCE) Group, Institute of Materials Chemistry, Faculty of Chemistry, University of Vienna, Währinger Strasse 42, 1090 Vienna, Austria

⁵ Department of Materials, University of Manchester, Manchester, M13 9PL, UK

⁶ Department of Bioproducts and Biosystems, Aalto University, P.O. Box 16300, FI-00076 Aalto, Finland

Corresponding authors:

william.sampson@manchester.ac.uk, alexander.bismarck@univie.ac.at, eero.kontturi@aalto.fi

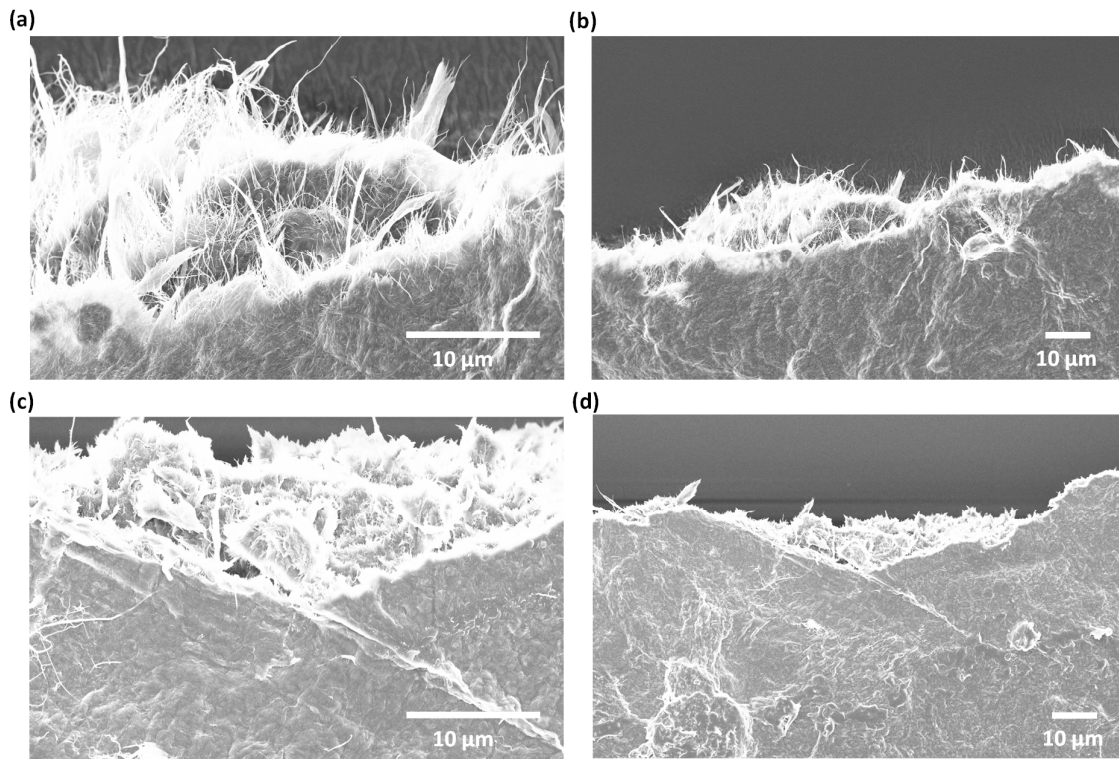


Figure S1. SEM image of a fracture surface on a (a,b) BC and (c,d) NFC nanopaper.

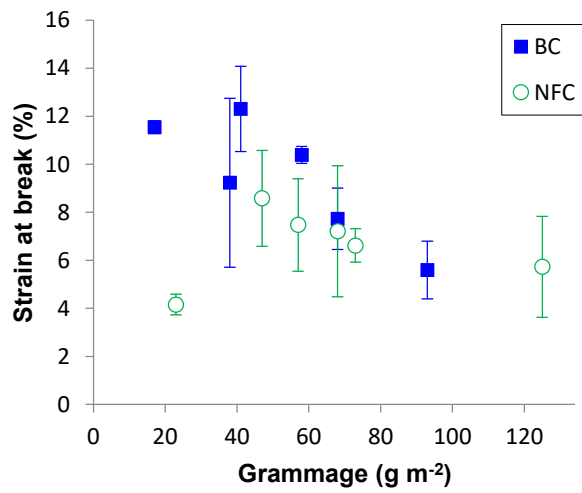


Figure S2. Strain at break as a function of grammage of BC and NFC nanopapers.