

THE UNIVERSITY OF
WARWICK

University of Warwick institutional repository: <http://go.warwick.ac.uk/wrap>

This paper is made available online in accordance with publisher policies. Please scroll down to view the document itself. Please refer to the repository record for this item and our policy information available from the repository home page for further information.

To see the final version of this paper please visit the publisher's website. Access to the published version may require a subscription.

Author(s): C. D. Westbrook, R. C. Ball, P. R. Field and A. J. Heymsfield

Article Title: Universality in snowflake aggregation

Year of publication: 2004

Link to published article:

<http://dx.doi.org/10.1029/2004GL020363>

Publisher statement: An edited version of this paper was published by AGU. Copyright (2004) American Geophysical Union.

C. D. Westbrook, R. C. Ball, P. R. Field and A. J. Heymsfield (2004), Universality in snowflake aggregation, Geophysical Research Letters, Vol. 31, L15104, doi: 10.1029/2004GL020363. To view the published open abstract, go to <http://dx.doi.org> and enter the DOI.

Universality in snowflake aggregation

C. D. Westbrook and R. C. Ball

Department of Physics, University of Warwick, Coventry, UK

P. R. Field

Met Office, Exeter, Devon, UK

A. J. Heymsfield

National Centre for Atmospheric Research, Boulder, Colorado, USA

Received 26 April 2004; revised 1 June 2004; accepted 16 June 2004; published 5 August 2004.

[1] Aggregation of ice crystals is a key process governing precipitation. Individual ice crystals exhibit considerable diversity of shape, and a wide range of physical processes could influence their aggregation; despite this we show that a simple computer model captures key features of aggregate shape and size distribution reported recently from cirrus clouds. The results prompt a new way to plot the experimental size distributions leading to remarkably good dynamical scaling. That scaling independently confirms that there is a single dominant aggregation mechanism at play, albeit our model (based on undeflected trajectories to contact) does not capture its form exactly. *INDEX TERMS:* 0320 Atmospheric Composition and Structure: Cloud physics and chemistry; 3329 Meteorology and Atmospheric Dynamics: Mesoscale meteorology; 3337 Meteorology and Atmospheric Dynamics: Numerical modeling and data assimilation; 3354 Meteorology and Atmospheric Dynamics: Precipitation (1854); 3367 Meteorology and Atmospheric Dynamics: Theoretical modeling. **Citation:** Westbrook, C. D., R. C. Ball, P. R. Field, and A. J. Heymsfield (2004), Universality in snowflake aggregation, *Geophys. Res. Lett.*, 31, L15104, doi:10.1029/2004GL020363.

[2] It has recently become possible to collect large samples of high resolution cloud particle images in real time, opening up the modelling of cloud dynamics to detailed comparison with nature. Figure 1 shows ice crystal aggregates from a cirrus cloud over the USA, captured by non-contact aircraft-based imaging. Such aggregates can be seen to be comprised of varied rosette ice crystal types, and detailed statistics have recently been published on both the cluster aspect ratios [Korolev and Isaac, 2003] and size distributions [Field and Heymsfield, 2003] in cirrus clouds. Such aggregation is a key feature of cloud development in the troposphere and can be quite crucial to the development of precipitation, whether it reaches the ground as snow or melts first to arrive as rain.

[3] The openness of the aggregates significantly accelerates their growth. Two clusters (labelled by i, j) approach with their centres closer than the sum of their radii $r_i + r_j$ at a rate proportional to

$$\pi(r_i + r_j)^2 |v_i - v_j|, \quad (1)$$

where for each cluster the sedimentation speed v varies inversely with its radius r and mass m as

$$v = \frac{\eta/\rho}{r} F\left(\frac{mg\rho}{\eta^2}\right). \quad (2)$$

Here η and ρ are the viscosity and density of the air, g is the acceleration due to gravity, and we have assumed that only one geometrical radius is relevant: Mitchell [1996] discusses an elaboration. Given the above, the rates of aggregation per unit time for fixed cluster masses vary linearly overall with the cluster radii, and openness of aggregate structure enhances aggregation rates despite lowering fall speed. For real aggregates this is a significant factor: using data from Heymsfield *et al.* [2002], one finds that rosette aggregates 2 mm across (which yield 0.5 mm droplets) aggregate four times faster than when melted. For cloud particles it is also relevant to consider the rates of aggregation per unit of distance fallen (rather than per unit time), which at fixed mass is proportional to the square of radius, leading to 16 times enhancement for ice over water in the example cited.

[4] We have made computer simulations of ice aggregation based on equations (1) and (2), tracing trajectories through possible collisions to obtain accurate collision geometries. We assumed that all collisions led to rigid irreversible joining of clusters, as the openness of the experimentally observed clusters suggests little large scale consolidation of structure upon aggregation, and that cluster orientations were randomised in between collisions but did not change significantly during them. We took the sedimentation speeds to be governed by inertial flow, for which the mass dependence function in equation (2) is given by $F(X) \propto X^{1/2}$. Details of implementation are given in a longer paper [Westbrook *et al.*, 2004].

[5] Some representative computer aggregates are shown in Figure 1 alongside the experimental ones. Our simulations used three dimensional cross shapes for the initial particles as a crude representation of the experimental bullet rosettes.

[6] Figure 2 shows a quantitative comparison of aggregate geometry, in terms of the ratio of cluster spans perpendicular to and along the direction of maximal span, as measured from projections in an arbitrary plane of observation. We find that different initial particle geometries (rosettes, rods) approach a common asymptotic average cluster value. The aspect ratio of CPI images have been

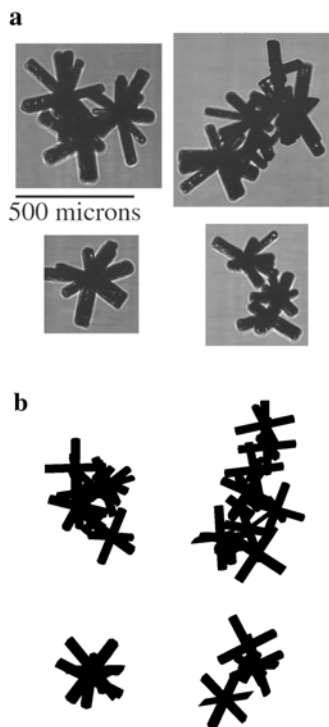


Figure 1. (a) Ice crystal aggregates images obtained from an aircraft flight through cirrus cloud, at temperatures from -44°C to -47°C (~ 9 km altitude), using a cloud particle imager (CPI, SPEC Inc., USA). The pictures shown are aggregates of rosette ice crystal types. (b) Aggregates as simulated by our computer model which assumed rigid joining when clusters collide under differential sedimentation.

similarly calculated [Korolev and Isaac, 2003], the results of which have been overlaid onto Figure 2, and these appear to approach the same value. This universality of aspect ratios provides direct support for our hypothesis of rigid cluster joining upon contact.

[7] A deeper indicator of universality is provided by the fractal scaling of ice crystal aggregates, where one tests the relation $m \propto \ell^{d_f}$ between aggregate mass m and linear span ℓ . Our simulations and experimental observations [Heymsfield et al., 2002] rather accurately agree on the fractal dimension $d_f = 2.05 \pm 0.1$, and Westbrook et al. [2004] discuss theoretical arguments leading to $d_f = 2$.

[8] Our simulations conform well to dynamical scaling of the cluster size distribution. This means that number of clusters per unit mass varies with mass and time together as a single scaling function,

$$\frac{dN}{dm}(m, t) = S(t)^{-2} \Phi\left(\frac{m}{S(t)}\right), \quad (3)$$

where $S(t)$ is the weight average cluster mass. This relationship is confirmed in Figure 3, where we rescale the mass distribution from different times in the simulations onto a universal curve.

[9] The scaling function which we observe in Figure 3 exhibits power law behaviour with $\Phi(X) \propto X^{-\tau}$ for $X \ll 1$

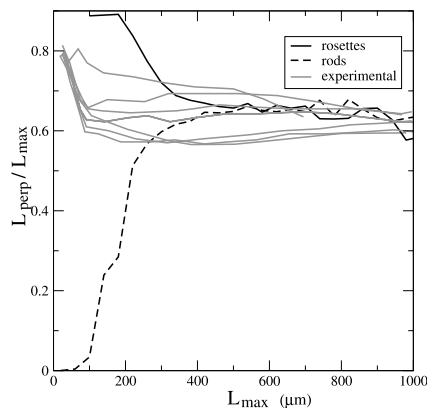


Figure 2. Mean aspect ratio for projected ice aggregate images, where the aspect ratio is measured as the longest span L_{max} divided into the span perpendicular to the longest L_{perp} . Grey lines show cloud data of Korolev and Isaac [2003] plotted against longest span in microns for a range of temperatures between 0°C and -40°C . Black lines show simulation data plotted against longest span in arbitrarily scaled units, where the initial particles were three dimensional crosses (solid line) and simple rods (dashed).

with $\tau \approx 1.6$. This is not intrinsically surprising (and indeed it matches theoretical expectations [Van Dongen and Ernst, 1985]) but it has forced us to abandon the way experimentally observed distributions of cluster linear size have hitherto been plotted. The problem is that given equation (3) and its observed power law form, we must expect that the distribution of clusters by linear span ℓ should at small ℓ take the form $\frac{dN}{d\ell}(\ell, t) \propto \ell^{-1-(\tau-1)d_f}$ which diverges as $\ell^{-2.2}$ using our observed exponents. For small enough crystal sizes this behaviour will be modified by the role of growth processes other than aggregation, but that lies outside the scaling regime.

[10] Because of the divergence one has to take great care in constructing a characteristic linear size $L(t)$, where the natural choices are $L_k(t) = \frac{\sum_{clusters} \ell^{k+1}}{\sum_{clusters} \ell^k}$ and the lowest whole

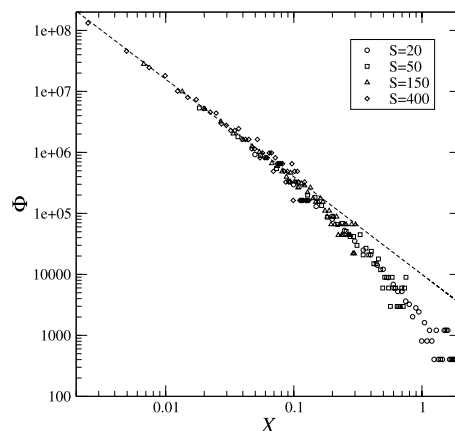


Figure 3. Dynamical scaling of the cluster mass distribution from simulations. The superposition of data from different times supports equation (3), and the linear portion indicates $\Phi(X) \propto X^{-\tau}$ at small X with exponent $\tau = 1.6$.

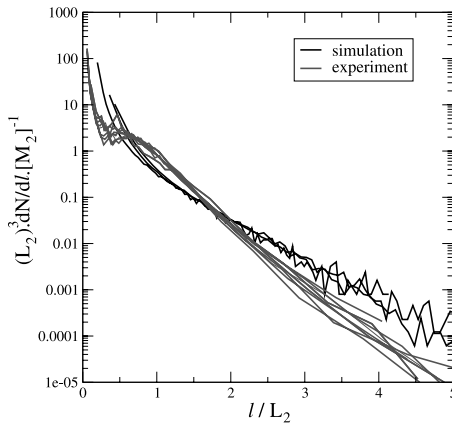


Figure 4. Cluster length distribution, rescaled as discussed in the text. The gray lines show experimental distributions at altitudes of 9.5 km (-50°C) to 6.6 km (-28°C) in the cirrus cloud of *Field and Heymsfield* [2003] obtained during an ARM (Atmospheric Radiation Measurement program) flight (9th March 2000). Each experimental size distribution represents an in-cloud average over 15 km. Black lines show simulation data.

number k for which the denominator is not dominated by the smallest clusters is $k = 2$. The simplest natural scaling ansatz for the cluster span distribution is then found [*Westbrook et al.*, 2004] to be

$$\frac{dN}{d\ell}(\ell, t) = M_2(t)L_2(t)^{-3}\Psi\left(\frac{\ell}{L_2(t)}\right),$$

where $M_k(t) = \sum_{clusters} \ell^k$. Figure 4 shows that this scaling ansatz works acceptably for our simulation data and well for the experimental observations. The latter are rich data because cluster span is one of the simplest automated measurements to take.

[11] The rescaled distributions from simulation and experiment agree fairly well but not perfectly, as shown in Figure 4. One experimental reservation is the fall-off of experimental observation efficiency at small sizes, where clusters can be missed. However our scaling procedure itself is in effect expressly designed to avoid sensitivity to this, and the superposition of the experimental data down to small reduced sizes looks good. Indeed it looks so good that the transient flattening around $\ell/L \approx 1$, which is absent from the simulations, appears to be significant.

[12] One suggestion for the flattening around the middle of the rescaled distribution is that it might be associated with the peculiar feature of the collision rate being zero between clusters of equal sedimentation speed. Our simulations include this feature but for low relative approach speeds, where each cluster has more time to adjust its momentum in response to the other perturbing the local

airflow, our approximation of ignoring hydrodynamic interactions (and hence phenomena such as wake capture) is less accurate.

[13] In summary, we have a fairly complete understanding of the geometry of the atmospheric ice crystal aggregates, dominated by sticking upon encounter. Further details of the sticking mechanism (which we did not include) appear not to be important for the cluster geometry, and the excellent scaling superposition of the experimental cluster size distributions suggests sticking efficiency does not favour aggregation at particular sizes. The simplest interpretation of these observations is that although the sticking probability might be low for a single microscopic event, many such contacts will be attempted during a cluster-cluster encounter so that eventual escape is unlikely. The actual sticking mechanism between ice crystals remains an intriguing open question, particularly for the low temperatures of Figure 1.

[14] The fact that the same evolution is seen for differing initial monomer populations (rods and rosettes) suggests that a single set of geometric relationships for ice aggregates can successfully be applied in a wide range of cloud conditions. This would lead to greater accuracy in retrieving cloud properties such as precipitation rate and predicting the radiative affect of ice crystal aggregates upon the climate system.

[15] **Acknowledgments.** CDW acknowledges financial support from the Engineering and Physical Sciences Research Council (UK), and the Met Office. Computing facilities were provided by University of Warwick Centre for Scientific Computing. The experimental data were contributed by AJH through collaborations with PRF who suggested the present study, the simulations are the work of CDW and theoretical input is from RCB. We are grateful to A Korolev for comments and permission to replot data of *Korolev and Isaac* [2003]. We are grateful to Aaron Bansemir for initial processing of the size distribution data and Carl Schmitt for supplying the CPI images.

References

- Field, P. R., and A. J. Heymsfield (2003), Aggregation and scaling of ice crystal distributions, *J. Atmos. Sci.*, *60*, 544–560.
- Heymsfield, A. J., et al. (2002), A general approach for deriving the properties of cirrus and stratiform ice cloud particles, *J. Atmos. Sci.*, *59*, 3–29.
- Korolev, A., and G. Isaac (2003), Roundness and aspect ratio of particles in ice clouds, *J. Atmos. Sci.*, *60*, 1795–1808.
- Mitchell, A. L. (1996), Use of mass- and area-dimensional power laws for determining precipitation particle terminal velocities, *J. Atmos. Sci.*, *53*, 1710–1723.
- Van Dongen, P. G. V., and M. H. Ernst (1985), Dynamical scaling in the kinetics of clustering, *Phys. Rev. Lett.*, *54*, 1396–1399.
- Westbrook, C. D., R. C. Ball, P. R. Field, and A. J. Heymsfield (2004), A theory of growth by differential sedimentation, with application to snowflake formation, *Phys. Rev. E*, in press.

R. C. Ball and C. D. Westbrook, Department of Physics, University of Warwick, Coventry CV4 7AL, UK. (r.c.ball@warwick.ac.uk; c.d.westbrook@warwick.ac.uk)

P. R. Field, Met Office, Exeter, Devon EX1 3PB, UK. (paul.field@metoffice.com)

A. J. Heymsfield, National Centre for Atmospheric Research, Boulder, CO 80307, USA. (heym1@ucar.edu)