

ERRATUM

Open Access



# Erratum: Increased spread and replication efficiency of *Listeria monocytogenes* in organotypic brain-slices is related to multilocus variable number of tandem repeat analysis (MLVA) complex

Claudia Guldemann<sup>1,2</sup>, Michelle Bärtschi<sup>1</sup>, Joachim Frey<sup>3</sup>, Andreas Zurbriggen<sup>1</sup>, Torsten Seuberlich<sup>1</sup> and Anna Oevermann<sup>1\*</sup>

## Erratum

The original version of this article unfortunately contained a mistake. Figures two, three and four (Figs. 1, 2 and 3 here, respectively) and their associated legends were interchanged in the HTML and PDF versions of this manuscript. The correct versions are given below. In addition, Figure Five (Fig. 4 here) was missing in the HTML version of this manuscript. The correct figure Five (Fig. 4 here) is also included below.

Published online: 03 September 2015

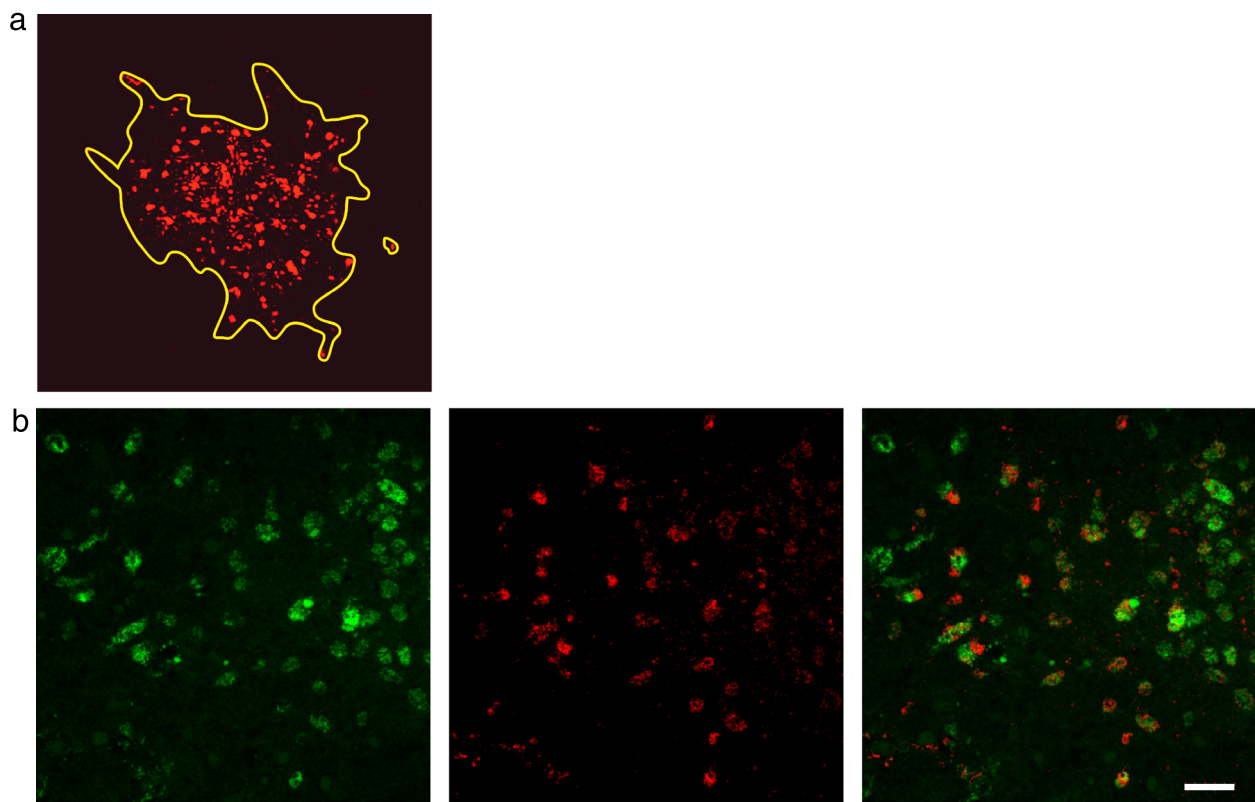
## Author details

<sup>1</sup>Division of Neurological Sciences, Neurocenter, Department of Clinical Research and Veterinary Public Health, Vetsuisse Faculty, University of Bern, Bern, Switzerland. <sup>2</sup>Graduate school for Cellular and Biomedical Sciences, University of Bern, Bern, Switzerland. <sup>3</sup>Institute of Veterinary Bacteriology, Vetsuisse Faculty, University of Bern, Bern, Switzerland.

\* Correspondence: [anna.oevermann@vetsuisse.unibe.ch](mailto:anna.oevermann@vetsuisse.unibe.ch)

<sup>1</sup>Division of Neurological Sciences, Neurocenter, Department of Clinical Research and Veterinary Public Health, Vetsuisse Faculty, University of Bern, Bern, Switzerland





**Fig. 1** Immunofluorescence stained confocal images of bacteria in infected brain-slices. **a:** Delineation of an infection focus (yellow line). *L. monocytogenes* are stained in red. The surface area covered by *L. monocytogenes* was drawn and calculated using the Fluoview software (Olympus FV10-ASW Version 03.01.01.09) Magnification 20x. **b:** Representative double-immunofluorescence of a *L. monocytogenes* infected brain-slice. The vast majority of bacteria are found within microglia. Left: Microglia are stained with CD68 in green. Center: *L. monocytogenes* in red. Right: Overlay (bar = 40  $\mu\text{m}$ )

