

u^b

b
**UNIVERSITÄT
BERN**

Institute of Archaeological Sciences
Prehistory

Albert Hafner
Caroline Heitz
Regine Stapfer

March 2016

Mobilities, Entanglements, Transformations.

Outline of a Research Project on Pottery Practices in Neolithic Wetland Sites of the Swiss Plateau





Project's Title: Mobilities, Entanglements and Transformations in Neolithic Societies of the Swiss Plateau (3900–3500 BC)



Funding: Swiss National Science Foundation
Project No 100011_156205



Project management: Prof. Dr. Albert Hafner
Institute of Archaeological Sciences
Prehistory
University of Bern
Switzerland



Project management: Prof. Dr. Vincent Serneels
Department of Geosciences
Section of Earth Sciences, Archaeometry
University of Fribourg
Switzerland

Impressum

Series ISSN: 2297-8607
e-ISBN: 978-3-906813-12-7 (e-print)
DOI: 10.7892/boris.77649

Editors: Albert Hafner and Caroline Heitz
Institute of Archaeological Sciences, Prehistory
University of Bern
Muesmattstrasse 27
CH-3012 Bern



This work is licensed under a Creative Commons Attribution 4.0 International License

English language editing: Andrew Lawrence, Sharon Shellock, Ariane Ballmer
Layout: Designer FH in Visual Communication Susanna Kaufmann
Photographs (front page): Today's shore of Lake Neuchâtel, Pfyn and Michelsberg pottery from the Neolithic bog settlement of Thayngen-Weier, Northern Switzerland (Caroline Heitz).

Table of Contents

1. Aims and research questions	4
2. State of research	5
3. Case studies	10
4. Mixed methods research-design	13
5. Some words on applied methods	17
6. Intended synthesis and anticipated impact of the project	18
7. Scientific collaborations and education of young scholars	19
8. References	21

Abstract

A large number of Late Neolithic sites (3900–3500 BC) in Switzerland, southern Germany and eastern France offer outstandingly well-preserved stratified archaeological materials. Due to the wide use of dendrochronology, settlement remains and artefact assemblages can now be placed into a precise and fixed chronological framework, thus presenting a unique case within prehistoric archaeology. In earlier research, chronological and regional units were constructed on the basis of pottery. These spatial and temporal units of typical pottery sets were understood as ‘Neolithic cultures’, i.e. as culturally more or less homogeneous entities connected with (ethnic) identities. Today, with a larger data corpus of excavated settlements at hand, we can begin to understand that this period of the past was in fact characterised by a multitude of cultural entanglements and transformations. This is indicated by the occurrence of local and non-local pottery styles in one and the same settlement: for example Cortaillod pottery typical for the region is found together with NMB-styled pottery in settlements at Lake Neuchâtel, and Michelsberg pottery regularly occurs in settlements at Lake Constance, where Pfyn pottery style is the typical local one. These and many more examples show that there must have been complex entanglements of social ties expanding between eastern France, southern Germany and the Swiss Plateau. Given these circumstances the former notions of Neolithic culture should be critically revised. Therefore, the Prehistoric Archaeology Department at the Archaeological Institute of the University of Berne started a four-year research project funded by the Swiss National Science Foundation in late 2014, called: ‘Mobilities, Entanglements and Transformations in Neolithic Societies of the Swiss Plateau (3900–3500 BC)’. Its objective is to address the topic sketched above by adopting a mixed methods research (MMR) design, combining qualitative and quantitative approaches from archaeology and archaeometry. The approach is theoretically based on Pierre Bourdieu’s reflexive sociology and his concept of habitus but includes further concepts of practice theories. By shifting the focus to the movement of people, ideas and things – to pottery production practices in contexts of mobility – a deeper understanding of the transformative capacities of encounters can be achieved. This opens the path for new insights into Neolithic societies including social, cultural and economic dynamics that were underestimated in former research.

Key words: Mixed methods research, culture, habitus/social practice, p-XRF analysis, multivariate statistics, archaeometry, Neolithic wetland sites, pottery, 4th millennium BC.

1. Aims and research questions

The project’s main objective is to gain a deeper understanding of the complex relations between social groups living in wetland sites on the Swiss Plateau between 3900 and 3500 BC. These relations can be observed in similarities and differences in the material culture of contemporaneous settlements. The majority of a site’s artefacts show typically local or regional features: pottery was made in the typical regional style and out of locally available clays. As a starting point we hypothesise that pottery was usually made by local communities sharing specific pottery production practices and using materials that were available near their settlements. However, very frequently we also find vessels made in different styles out of local AND/OR not locally available raw materials in these settlements. Our study aims at tracing such phenomena by focussing on pottery production practices¹. In order to understand social ties, mobilities and possible triggered transformations on the basis of ceramics we need to elaborate on how the typical regional pottery styles looked between Lake Neuchâtel and Lake Constance during the first half of the 4th millennium BC as well as in the neighbouring regions. Furthermore, different modes of production and usages of clays and tempers (pottery production practices) need to be approached by analysing the pottery of selected settlements. Thus our subordinate research questions are:

- How can local practices of pottery production in a settlement be recognized and differentiated from others belonging to more distant places?
- How can we determine in large quantities whether vessels were produced locally or brought to the settlements from outside?
- What could different pottery styles and pottery practices in one single settlement tell us about people’s mobilities and social ties?
- What were the different ranges and directions and possible contexts of mobility?
- Did the encounter of people with different pottery practices transform local pottery productions? Were new vessel types, styles or techniques appropriated or rejected on local scale? Did they trigger changes?

We approach these phenomena by multi-sited archaeology and the analysis of pottery from selected key sites between

¹ As a second priority, the geological provenance of raw materials used for stone stools will be investigated; this part of the project will not be elaborated upon in this paper.

Lake Neuchâtel and Lake Constance (see 3. Case studies). The precise chronology and outstanding archaeological conservation of wetland sites in these regions allows us to follow the phenomena of mobility, social ties and transformations in a very close way. The project's main objectives are:

- Elaborating a mix of qualitative and quantitative methods from archaeology (humanities), and archaeometry (science) to address mobility and pottery production practices.
- Recognizing objective regularities and deviations in data using (multivariate) statistics in order to characterize typical local pottery production practice and finding vessels made in different styles or with non-local raw materials.
- Investigating the creative processes of pottery production in a context of mobility and encounter: using qualitative methods to understand the making of individual vessels, interpreting decisions about the raw material, style and technological choices of the potters.

However, in order to address the inherent dynamics connected to peoples' mobilities with a coherent conceptual framework, a critical review of the former research and its notions of Neolithic societies first needs to be undertaken. This is inevitable because some of the currently used pottery classification systems and typologies were linked with the construction of more or less static, homogeneous and spatially bounded 'Neolithic cultures'. Only by revealing these, often unconsciously made, projections of our notions about Neolithic societies into the past can the biasing of our research by our own contemporaneous perspectives be controlled and reduced.

2. State of research

Because of the above-mentioned link made by former European research between pottery, 'Neolithic cultures' and ethnic identities, fundamental changes in material culture were, for a long time, explained by migrating people. Researchers who were more sceptical about ethnic interpretations of material culture patterns have addressed these transformations carefully as 'foreign influences', thus avoiding the questions of social categories 'behind' the artefacts

Reflection on concepts of 'Neolithic cultures'

In the early 20th century, archaeological cultures were first and foremost conceptualizations (Kossinna 1911; Childe 1925, 1950). In the context of 19th century thought they were understood as material expressions of past ethnic

realities but also functioned as tools to establish chronological frameworks (Lüning 1972; Wotzka 1993; Hafner/Suter 2003; Roberts/Vander Linden 2011). With the introduction of radiocarbon dating and dendrochronology, however, the notion of archaeological cultures was that chronologically relevant types of material culture – mainly pottery – could be equated with social groups and deductively coherent bounded entities could be constructed.

While, as we shall see in the following, the 'Neolithic cultures' served more as chronological and spatial entities, the idea that they represented ethnic groups was still perpetuated even though the latter stayed less outspoken (Fig. 1).

During the 20th century very different ways out of this issue – the problematic a priori linking of constructed archaeological cultures with imagined ethnic entities – were chosen. These new directions followed not only paradigmatic shifts in archaeology over the following decades but they were also informed by national research traditions (Veit 1990; Wotzka 2000; Eggert 2013; Demoule 1999; Müller-Scheßel/Burmeister 2006; Vander Lindern/Roberts 2011). British scholars following post-processual archaeology rejected the notion of archaeological cultures but stressed the active role of material culture and its meanings in the processes of identity formation and in the reproduction of social relationships, status etc. (e. g. Hodder 1979, 1982; Shanks/Tilly 1987; Jones 1997; Insoll 2007). Furthermore, inspired by some post-structural French sociologists and philosophers, social anthropology as well as material culture studies in general (e. g. Bourdieu 1977; Appadurai 1986; Miller 1998, 2005; Latour 2007; Ingold 2013), archaeological studies themselves became more and more contextual and relational.

In current French, Swiss and German Neolithic wetland archaeology, most scholars currently use the terms of archaeological cultures as *termini technici*, as classificatory tools, more or less free of social implications (Lüning 1971; Hafner/Suter 2003; Stöckli 2009). However, questions concerning cultural and social aspects have not completely disappeared; instead they are now incorporated into different methodical designs.

In the following, a few scholars who have searched for new ways to address these aspects shall be mentioned: French scholars of the cultural technology approach investigated raw material use, production modes and styles of objects following the concept of the *chaîne opératoire* (Arnal/Bénazet 1951; Leroi-Gourhan 1964; see Vander Linden/Roberts 2011). Since the late 1980s and the increasing use of dendrochronology, studies on Neolithic wetland

Genf Waadt Wallis	Freiburg Neuenburg Bern	Luzern Zug Aargau	Zürich Thurgau	Basel	Schaff- hausen	St.Gallen Liechten- stein	Grau- bünden	Tessin	
Glocken- becher Kultur ?	Westschweiz Spät- neolithikum	Schnurkeramische Kultur			Glockenbecher Kultur ?	?	Schnur- keram. Kultur	?	Glockenbecher Kultur? ?
?	Horgener Kultur							?	
	Jüngere Cortaillod-Kultur		Jüngere Pfyner Kultur	Michels- berger Kultur ?	Jüngere Pfyner Kultur		?	Lagozza- Kultur ?	
?	Alt.Cortaillod-Kultur		Ältere Pfyner Kultur ?		Alt. Pfyner Kultur		?	?	
			Lutz-K.		Lutzengütli-Kultur				
Chasséen ?		Egolzwiler Kultur			Rössener Kultur		?	Kultur der Bocca quadrata- Keramik ?	
	Mesolithikum				Stichbandkeram. Kultur			Mesolithikum	
					Linearbandkeram. Kultur				

Fig. 1: Chronological table with 'Neolithic cultures', published in the 1960ies by Emil Vogt (Vogt 1967).

sites have followed the dynamics of spatial and temporal variation in material culture by focussing on small-scale mobility, networks, and the transfer of things and ideas through ethno-archaeological approaches (Pétrequin et al. 1987/1988, 1993b). In German Neolithic archaeology, some innovative attempts have been made by taking Pierre Bourdieu's habitus-concept as a theoretical basis in order to understand the reproduction of cultural standardizations and variability detectable in material culture and linking it in some cases with the implementation of multivariate statistics and GIS-analysis (Furholt 2008, 2009, 2011a; Bartholdy 2010; Dammers 2009; Kerig/Shennan 2012). In Swiss Neolithic archaeology a few suggestions going in the same direction have also been made. However, few scholars have so far targeted the concepts of culture explicitly by criticizing them theoretically (see below, Hafner/Suter 1997, 2003; Doppler/Ebersbach 2011; Doppler et al. 2012). To sum up, many current studies in Neolithic wetland archaeology address the topic more implicitly and are characterized by a strong empirical basis. They focus rather on issues like houses and households, settlement and population dynamics, mobility and migration, circulation of things, networks and social relationships as well as on the interrelationship between humans and the environment (e. g. Burri-Wyser/Loubier 2011; Ebersbach 2013; Doppler/Ebersbach 2011; Leuzinger 2000; Matuschik et al. 2010; Matuschik 2011; Pétrequin et al. 2012; Bailly 2013; Hafner/Heitz/Stapfer 2014). Still, there is a lack of studies combining theoretic-

cal issues of culture, material culture, social groups, entanglements, mobility, transformations and related topics with empirical investigations that go beyond the dichotomy of migration versus acculturation (for the latter see Burmeister 2013; Eggert 2013).

'Foreign influences' and changes in the material culture of wetland sites of the Swiss Plateau (3900–3500 BC)

The current terms for Neolithic cultures within our area of research were mainly defined on the basis of pottery (Vogt 1934; Von Gonzenbach 1949; Winiger 1971; Driehaus 1960; Lüning 1967; Pétrequin (ed.) 1986). In the following we refer to them as stylistic groups. In the Swiss Plateau, two main pottery styles can be differentiated (Fig. 2a–c):

- 1) The Mediterranean-influenced Cortaillod pottery style with round vessel bases, occurring between Lake Zurich and Lake Geneva.
- 2) The Danubian-influenced Pfyner pottery style (until the 1970s called 'Swiss Michelsberg') with flat-based vessels, known between Lake Zurich and Lake Constance and upper Swabia.

Along with principal differences there are also similarities and ties between these two stylistic groups (Hafner/Suter 2002, 2003, 2005b; Stöckli 2009). Furthermore, so-called 'foreign influences' from adjacent material culture groups beyond the Swiss Plateau can be noticed as well.

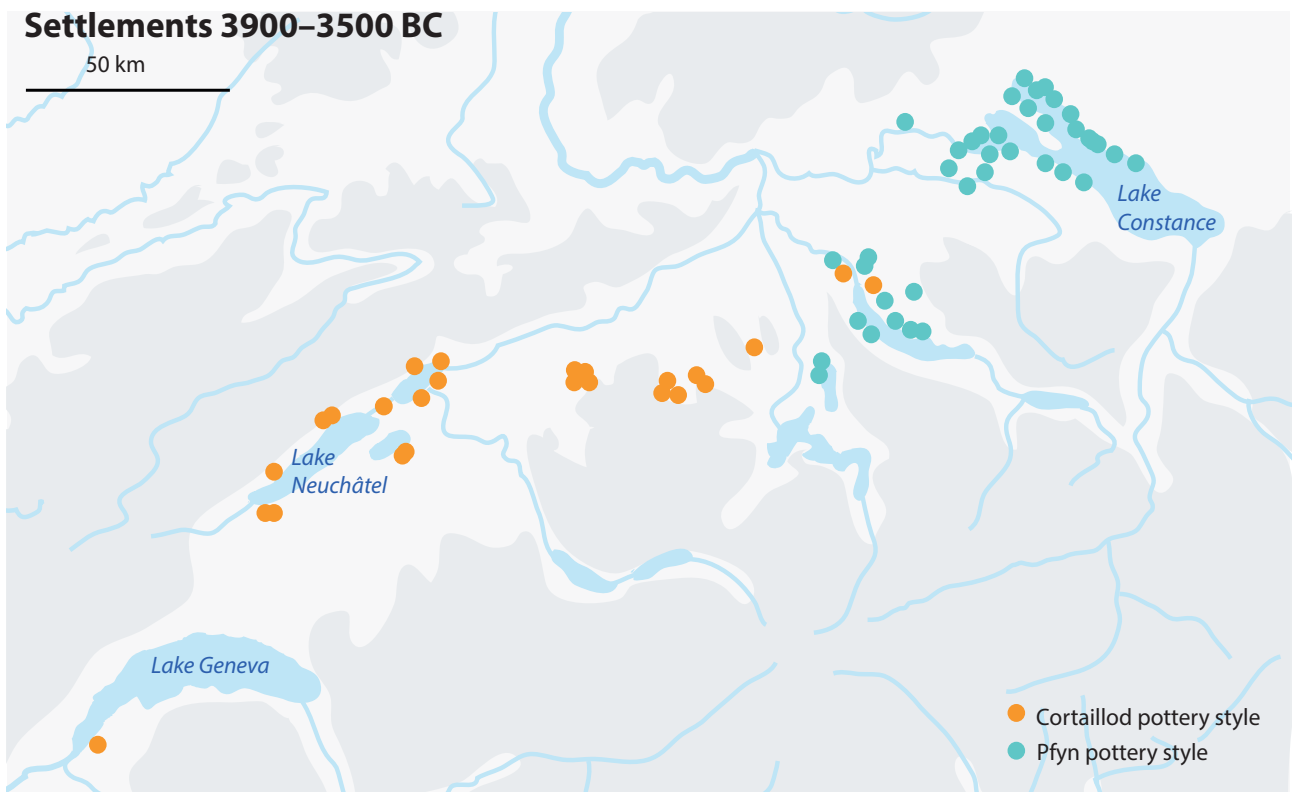


Fig. 2: a. Wetland sites in Switzerland and Southern Germany having Pfyn/Hornstaad or Cortailod pottery styles, dating between 3900 and 3500 BC, as well as typical selections of vessels (R. Stapfer/C. Heitz).



Fig. 2: b. Cortailod pottery from Twann-Bahnhof (BE/CH) (B. Redha Archäologischer Dienst des Kantons Bern).



Fig. 2: c. Pfyn pottery from Gachnang-Niederwil (TG/CH) (D. Steiner, Amt für Archäologie des Kantons Thurgau).

Western Switzerland

In many Cortaillod wetland sites, material entanglements in pottery assemblages and in the raw materials of stone artefacts have been discovered over the last thirty years (e.g. Stöckli 1981 a+b; Nungässer/Maggetti/Stöckli 1985; Stöckli 2009; Willms 1980; Piningre 1974; Diethelm 1994; Joye 2008; Burri 2007; Burri 2009; Burri-Wyser/Loubier 2011; Stapfer 2012). Although 'foreign' pottery (imported finished vessels) was rarely identified as such, 'special' pottery made with unusual raw materials could be separated from the majority of 'regular' pottery made with local clay and temper. Sometimes the unusual raw material seems to be exogenous but mostly it can be attributed to local sources around the settlements that were not exploited for 'regular' pottery. This means that some Neolithic potters must have been looking for local clays with particular material characteristics (e.g. Nungässer/Maggetti 1978; Nungässer/Maggetti/Stöckli 1985; Suter 1987; Maggetti 2009). Although the results of the archaeometrical studies are very promising, only a few reference groups of the macroscopically different materials (pottery and stone tools) have been analysed so far (Maggetti 2009). The reasons for this deficit can be found in the time-consuming and expensive nature of the methods (thin-section and traditional XRF analysis).

Furthermore, the social networks and cultural dynamics linked to these 'foreign influences' have never been studied in detail.

So far, it seems that strong influences come from the Néolithique moyen Bourguignon (NMB), located in Burgundy and Franche-Comté (eastern France), whereas the impact from the Pfyn pottery style seems to be much lower. With the publication of the Neolithic pottery of the site of Concise-sous-Colachoz (western Switzerland, Lake Neuchâtel, Burri 2007) as well as the pottery of Clairvaux (Jura, France, Jammet-Reynal 2006), a considerable quantity of precisely dated NMB pottery was presented for the first time (Fig. 3a–c)

Two recent studies define and classify this stylistic group to a further extent (Jammet-Reynal/Pétrequin/Besse 2010; Jammet-Reynal 2012; Moreau 2010). Prior to this, the style and development of NMB pottery was barely known because most of the NMB sites in eastern France are not precisely dated.

The finds from Concise allowed the identification of NMB pottery at other sites of western Switzerland. Local Cortaillod and 'foreign' NMB pottery differ in style and temper: while Cortaillod pottery is S-shaped with knobs around the border and tempered with quartz and sand, the NMB-style



Fig. 3: Cortaillod (a), NMB (b) and mixed pottery (c) from the settlement Concise-sous-Colachoz (3713-3675 BC) at Lake Neuchâtel (R. Stapfer after Burri 2007).

vessels are characterized by shoulders accented by knobs and tempered with limestone or calcite (Burri 2007). A small number of raw material analyses showed that NMB pottery was either imported from the western side of the Jura Mountains (Nungässer et al. 1985), or produced locally (Burri 2007).

At Cortaillod sites, stone axes of black shale (aphanite) deriving from the Vosges (France) can be noticed as a second 'foreign' element (e.g. Willms 1980; Piningre 1974; Diethelm 1994; Pétrequin/Jeudy/Jeunesse 1993; Pétrequin 1993a). Furthermore, some stone axes, which macroscopically do not differ from the imported black shale stone axes, derive from local moraine and could be interpreted as 'imitations' of the imported stone axes (Joye 2008; Diethelm 1989). Apart from these raw materials, rare jadeite and other rocks were also found to derive from the Monte Viso and the Monte Beigua in western Italy (Joye 2008; Pétrequin et al. 2012). This shows that wetland sites in western Switzerland were part of a broad exchange network of large hand axe blades, spread throughout the whole of western Europe and the British Isles in the 5th and early 4th millennium BC.

North-Eastern Switzerland, Southern Germany

In the Lake Zurich region, major transformations in material culture were observed in settlements dating to around 3800 BC. They have been referred to as the 'transition from Cortaillod to Pfyn culture'. Hypotheses explaining these changes were torn between the migration of people and the inclusion of cultural innovations. Due to the lack of systematic comparative quantitative archaeological and archaeometrical investigations, these hypotheses have not yet been verified or rejected in a satisfactory manner (Kustermann 1984; Suter 1987; Bleuer/Hardmeyer 1993; Gerber et al. 1994; Biel et al. 1998; Knopf 2002; Hafner/Suter 2003; Stöckli 2009).

However, in the settlements with Pfyn pottery dating into the 38th, 37th and 36th century BC, round knobs on the rims of pots, gynaecomorphic vessels and some rare beakers of deer antler show ties between central and western Switzerland. Crucibles for copper-melting and copper objects (Mondsee copper), as well as gynaecomorphic jugs and Bavarian flints show ties to Danubian regions (Biel et al. 1998; Cevey et al. 2006; Lichter 2010; Matuschik et al. 2010; Matuschik 2011).

The occurrence of vessels in Michelsberg and Munzingen style in settlements that have mainly Pfyn pottery show relations with the Upper Rhine Valley, Kraichgau, Hegau and Upper Swabia in Germany (Biel et al. 1998; Jeunesse 1997; Lefranc et al. 2011; Seidel 2008, 2011; Höhn 2002; Matuschik et al. 2010, Matuschik 2011) (Fig. 4a–c).

At Lake Constance, thin-sections and chemical analyses of pottery have proven that some of the Michelsberg-styled vessels might have been imported from the Hegau, by reason of them having a volcanic and illitic temper. Others, however, were produced with local clays yet show Michelsberg technique and style. The hypothesis was set up suggesting that aspects of Michelsberg pottery were appropriated, thus triggering changes in the Pfyn pottery style around 3800 BC (Biel et al. 1998; Matuschik 2011).

Besides pottery, hammer axes made of basalt found in settlements around Lake Constance could also indicate relationships to the Hegau region. Flint varieties originating from Monte Lessini (Northern Italy) and Rijckholt (Northern Germany), however, point to long-distance networks (Leuzinger 2000; Biel et al. 1998; Matuschik et al. 2010).

Two current research projects dealing with regions next to the Swiss Plateau promise to give new insights that could be included into our own studies: The French-German research program 'MK-Project - Emergence of the social complexity' promises to give new insights on the social, cultural and economic transformations of the 'Michelsberg-culture' on a broader scale, which will also be relevant for the wetland sites (Gleser/Becker 2010; Dubouloz et al. 2010). The German DFG-project 'Siedlungsstrukturen der Michelsberger Kultur im Kraichgau' will yield important findings about chronological details and cultural influences in that region. It is particularly important for the wetland sites on the Swiss Plateau because of their proximity to the Kraichgau (Seidel 2013).

Conclusion on the state of research

In the material culture of the wetland sites between Lake Neuchâtel and Lake Constance, different phenomena indicate different forms of mobility and far reaching social ties. The settlement pottery shows regularly that vessels of non-local styles were imported to the site or were even made locally. Furthermore, the pottery styles of Michelsberg, NMB, Munzingen, Cortaillod and Pfyn share some stylistic features indicating that the flow of ideas and things linked to the mobility of people between 3900 and 3500 BC triggered transformations within the local material culture. Mineralogical-petrographic determinations of lithic raw materials, used for stone tool production, show that not only local varieties were collected. Rather, rare jadeite, black shale (aphanite), basalts etc. were exchanged from their geological sources over long distances. Furthermore, rare flint varieties indicate that far reaching networks of the Jura Mountains, the Paris Basin, southern France, northern Italy and southern Germany must have existed during the 1st half of the 4th millennium BC.

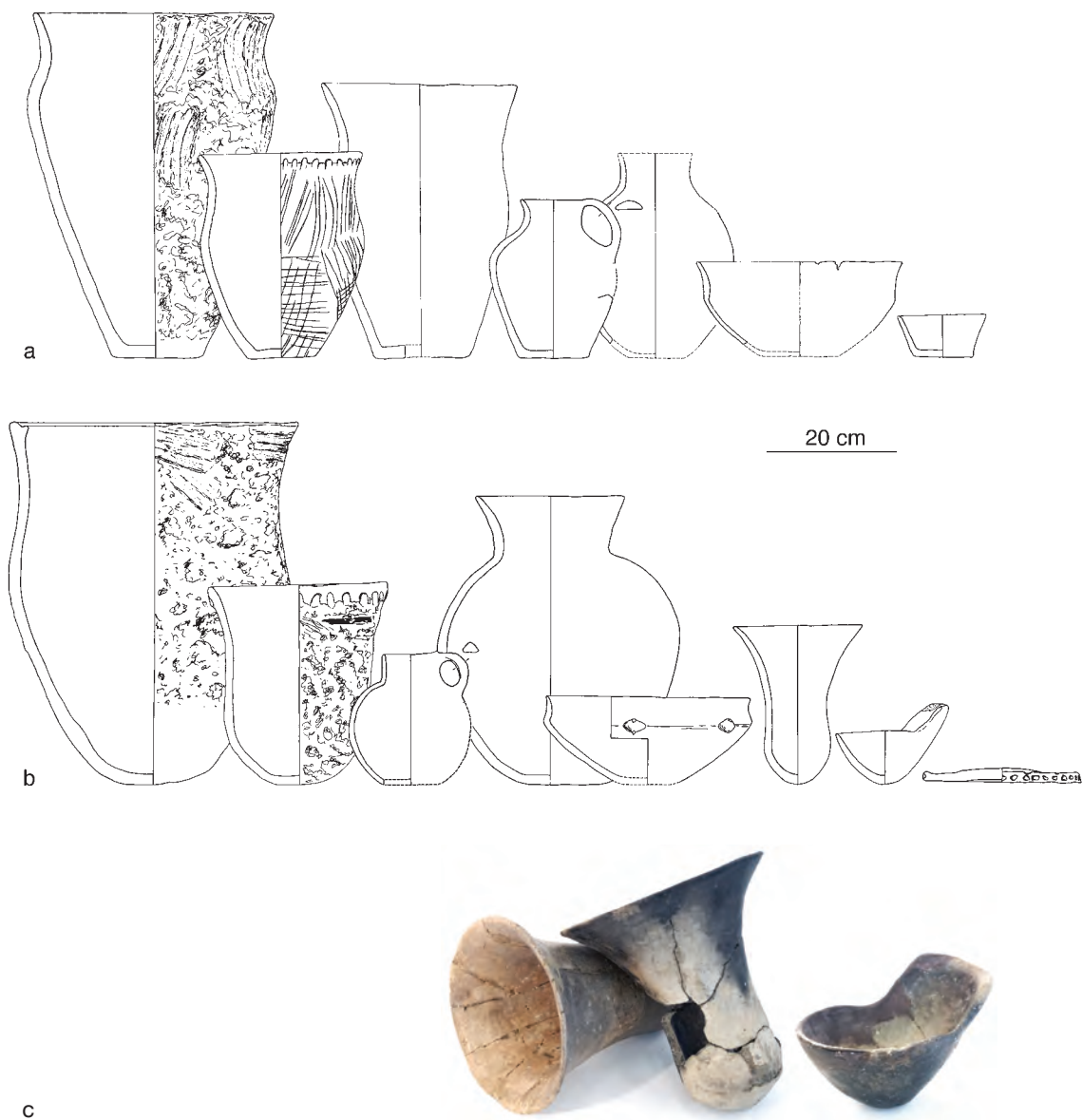
Current studies focus on dense, precise one-site studies or on large supra-regional perspectives. For a better understanding of these material culture entanglements, multi-sited projects are vital. Remains from wetland sites published in about the last 50 years need to be re-considered and updated to today's state of research. In addition to a comparative approach, archaeological qualitative and quantitative methods from the humanities and science should be combined in order to gain new insights in this research field. In order to explore relationships in material culture, data should be analysed using multivariate statistics. We see a huge potential in the use of broad, comparative raw material analyses to answer questions about

different ranges and directions of mobility and the impact of mobile people on pottery production practices.

3. Case studies

The project adopts a wide, comparative multi-sited approach in which the material culture's entanglements from selected key sites will be analysed in detail and then embedded in their regional and supra regional contexts (Fig. 5). This approach will be applied in two case studies corresponding to two PhD programs.

While their regional and supra regional contexts will be studied by the elaboration of chronological correlations



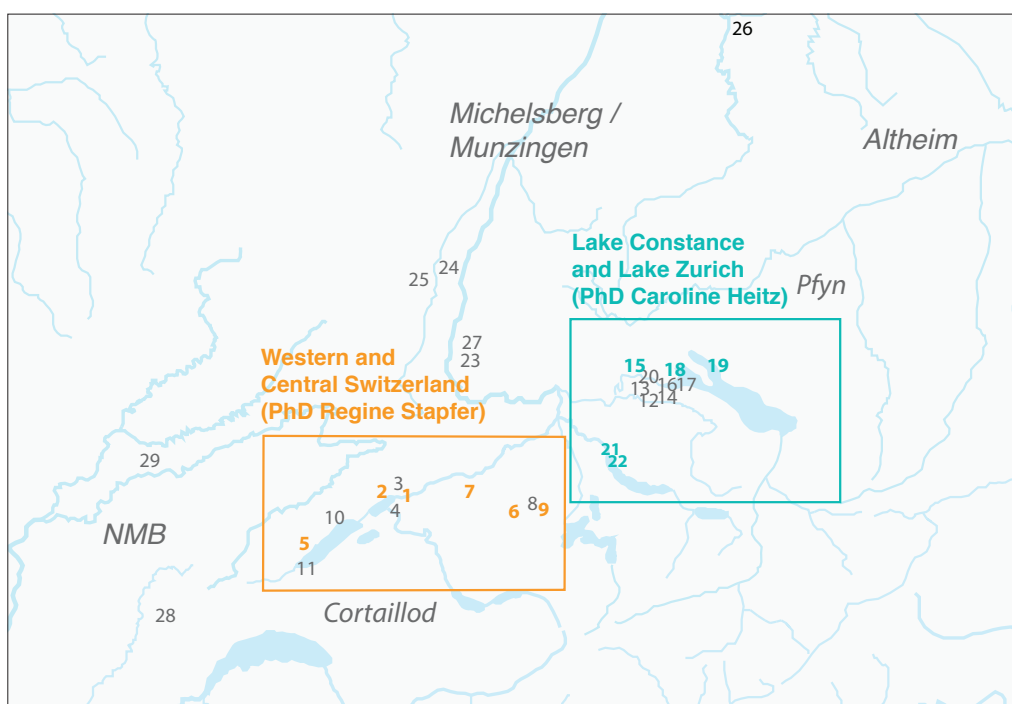
10 Fig. 4: Typical local Pfyn pottery (a) and Michelsberg pottery (b) as well as Michelsberg tulip beakers and a ladle (c) found at the settlement Thayngen-Weier in Lake Constance region (drawings: Winiger 1971, photo: C. Heitz).

and comparative stylistic analyses, with published data of second priority sites, a profound understanding of the phenomena will be achieved through detailed analyses of the archaeological finds from selected primary key sites (Fig. 6a–b).

Besides their different empirical fields, the PhD-thesis of case study 1 focuses on the elaboration of a workflow for p-XRF-analysis, while the PhD-thesis of case study 2 focuses on the elaboration of a theoretical framework connected to the mixed-methods approach of the project. However, after its elaboration, the knowledge will be shared and the overall approach will be applied to both case studies in the same manner.

Case study 1: Western Switzerland and entanglements in Cortaillod styled pottery

In this case study, the Neolithic societies of western Switzerland and eastern France (39th to 36th century BC) will be analysed on a regional and supra-regional level. First, two settlements deriving from the bay of Sutz-Lattrigen (site Sutz-Lattrigen Hafen, 39th and 37th century BC) will be analysed to fill a research gap in this region (Hafner 2005, 2011). After this, the material culture, especially NMB, raw pottery materials and, in a further step, stone tools of non-local origin (possibly originating from the Vosges (F)) from formerly published neighbouring sites



Key sites Western and Central Switzerland

- 1: Sutz-Lattrigen
- 2: Twann Bahnhof
- 3: Port-Stüdeli
- 4: Lüscherz Dorfstation
- 5: Concise-sous Colachoz
- 6: Egolzwil 4 und 5
- 7: Burgäschisee N/S/SW/O
- 8: Sursee Zellmoos
- 9: Schenkon Trichtermoos
- 10: Auvernier Port
- 11: Yverdon Garage Martin

Key sites Lake Constance and Lake Zurich

- 12: Gachnang
- 13: Hüttwilen
- 14: Pfy-Breitenloo
- 15: Thayngen-Weier
- 16: Eschenz-Insel Werd
- 17: Steckborn-Turgi/Schanz
- 18: Hornstaad-Hörnle
- 19: Sipplingen
- 20: Wangen Hinterhorn
- 21: Zürich Mozartstrasse
- 22: Zürich KanSan

Key sites beyond the Swiss Plateau

- 23: Munzingen
- 24: Mundolsheim
- 25: Holzheim
- 26: Heilbronn-Klingelberg
- 27: Bötzingen-Häuslisberg
- 28: Clairvaux-les-Lacs
- 29: Lavans-les-Dôles

Fig. 5: Selected key sites considered in case study 1 (Western Switzerland) and case study 2 (North-Eastern Switzerland), the primary key sites are indicated in colour (R. Stapfer/C. Heitz).

around Lake Biene (Twann, Port-Stüdeli, Lüscherz Dorfstation), as well as from selected sites at Lake Neuchâtel (Concise) and on the Swiss Plateau (Burgäschisee, Egolzwil, Schenkon), will be identified and analysed by qualitative and quantitative methods (Key sites see: Hafner/Suter 2005a; Stöckli 1981a+b; Burri 2007; Wey 2001, 2012; Wyss 1983). Besides the analysis of findings from regional sites, selected NMB-style-pottery from the originating area in eastern France might also be studied using feature analysis to facilitate the identification of NMB-pottery in western Switzerland. Combining qualitative and quantitative analyses, social groups, social networks and peoples' mobility will be studied.

Case study 2: Lake Constance and Lake Zurich region and entanglements in Pfyn styled pottery

The second case study gives an in-depth examination into sites in north-eastern Switzerland and southern Germany from the 39th to 36th centuries BC. There, first the so-called Hornstaad and later the so-called Pfyn made up the typical locally produced pottery styles. In a first step, a uniform classification system will be developed in order to detect similarities and differences in shapes and decorations in the research area, using qualitative description and multivariate analyses. In order to understand the entanglements of Pfyn with other pottery styles (Schussenried, Michelsberg, Munzingen, Cortaillod, Altheim), the following key sites will be analysed in detail: Hornstaad Hörnle and Sipplingen (Lake Constance, D), Thayngen Weier (greater Lake Constance region, CH), Zürich AKAD-Presssehaus/KanSan

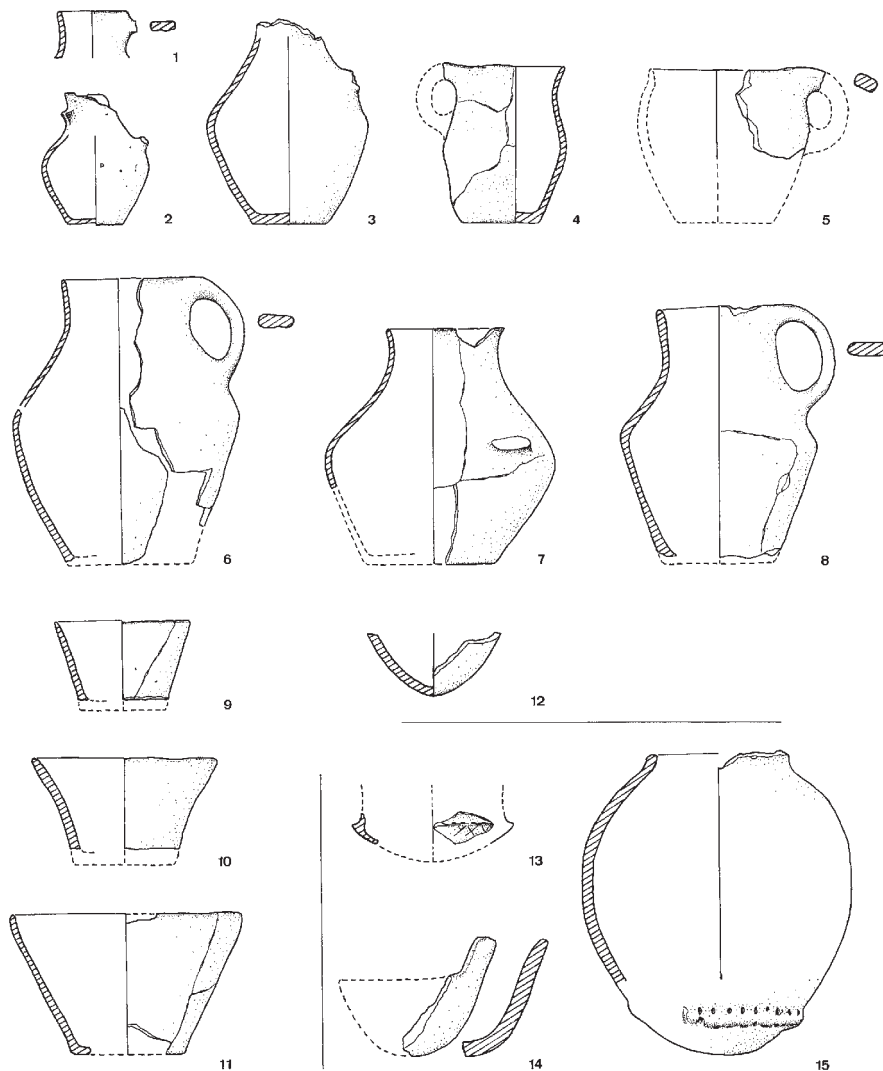


Fig. 6: a. Example of a published catalogue on pottery, originating from the settlement Steckborn-Turgi (TG) at Lake Constance (Winiger/Hasenfratz 1985).

and Zürich Mozartstrasse (Lake Zurich, CH). Thereby, features concerning shape and decoration and production techniques as well as raw materials will be analysed, using methods from archaeology and archaeometry. The key sites were chosen for several reasons: most of them are precisely dated, they all show stylistic heterogeneity and, thanks to their stratigraphies, comprising up to five settlements, transformations in pottery styles can be observed over time. Around 3800 BC, some Michelsberg pottery features, like segmented bowls and slipped surfaces of pots, were appropriated in settlements at Lake Constance, leading to a major transformation in the local Pfyn pottery production. At the same time, in settlements of the Lake Zurich region, Pfyn pottery features were incorporated into local Cortaillod pottery styles, resulting in the creation of a new local Zurich type of Pfyn style. Both examples seem to be linked to the mobility of people and provide a rare oppor-

tunity to study the transformative capacities of encounters between individuals and social groups belonging to different communities.

4. Mixed methods research-design

We are convinced that, if we want to address local and supra-regional perspectives, objective structures and individual agencies, qualitative (QUAL) and quantitative (QUAN) methods from archaeology (humanities) and archaeometry (science) need to be combined. Therefore, an accurate theoretical basis is needed. In social sciences, mixed methods research (MMR) approaches are used in similar cases. They structure the combination of different perspectives as well as QUAL- and QUAN-methods of data collection and analysis within one project in a specific and systematic way. Thus, the overall research topic and question



Fig. 6: b. Pottery from the settlement Zürich-Mozartstrasse (ZH) at Lake Zurich currently stored at the Cultural Heritage Service of canton Zurich (C. Heitz).

can be addressed with a coherent methodology (Teddlie/Tashakkori 2009; Creswell/Plano Clark 2010; Guest 2012). The advantages of MMR are: the overcoming of ‘paradigm wars’ between positivist and subjectivist stances; the solving of the contradictory logic of the stances by e. g. pragmatism, critical realism or historical epistemology as meta-perspectives; the deeper reflection on the relationships between the QUAL- and QUAN-methods during strands of investigation (Fries 2009; Harrits 2011; Schwartz-Shea/Yanow 2012).² MMR approaches have rarely been applied in archaeology so far but transferring them to our discipline contains a remarkable but untapped potential for prehistoric archaeology. We have chosen a multiple phase mixed methods research design, guided by well-reflected epistemological, methodological and empirical choices as well as a detailed conceptualization of mixing methods. It includes nine QUAL- and/or QUAN-strands with an overall equal priority (Fig. 7). The level of interaction between the QUAL-, QUAN- or QUAL/QUAN-strands is an interactive one, because they mostly inform each other, being merged or connected subsequently.

Theoretical basis, analytical phases and strands

The basic epistemological problem in the project presented here concerns the antithesis of objectivism and subjectivism, which is immanent in mixing quantitative and qualitative methods from the humanities and science, most pronounced in the debate of processual versus post-processual archaeology (see Boivin 2008; Stockhammer 2011; Veit 2011). We take historic epistemology as a research paradigm by appropriating Pierre Bourdieu’s reflexive sociology and praxeology approach as an overall theoretical basis for our MMR-approach (Bourdieu/Wacquant 1992; Bourdieu 2004; Rheinberg 2007; Harrits 2011; Fries 2009). Hence, the project’s three sequential phases correspond to the procedure of reflexive sociology:

- **Phase 1: Pinpointing the field of research (‘objectivation’)**

The aim of phase 1 is to achieve an objective construction of our research object (see Harrits 2011). This includes the following strands:

- Strand 1: Reflecting on researchers’ biases

The first strand of this project aims at reflecting on biases produced by the researchers’ perspectives, including our own, and our inevitable projections onto the past (Bourdieu/Wacquant 1992). This requires us to reflect on existing classifications, terms, notions and models about Neolithic societies; to locate and understand them in their (historic)

context of research: e. g. ‘culture’, ‘foreign influences’, ‘foreign/special pottery’, ‘migration’, ‘tradition’.

- Strand 2: Building up a theoretical basis, defining the field of research

The question we have to ask ourselves then is: what could material culture and especially pottery possibly tell us about past societies? Since we do not have access to emic categorisations of the investigated societies – unlike social anthropology – and we cannot observe the actions of the people, other ways must be chosen in archaeology to figure out relevant fields of investigation. Following Pierre Bourdieu’s social praxeology and his concept of ‘habitus’ – understood as internalized collective dispositions –, we argue that material culture offers an access to shared ways of life within communities and their social practices, but also their individual actions and choices (Bourdieu 1984; Bourdieu/Wacquant 1992). Things played an important role in these processes and therefore we argue that we can identify them in artefacts such as pottery. The most direct way to observe such phenomena in our sources is by looking at the process of making things. Some moments of past human actions within this process of making can be tracked directly in the materiality of the pots. Because the pots were made by humans who had a certain habitus, a certain position in their societies and belonged to a community of practice, we can not approach social practices only through regularities in pottery but must also look at individual actions and choices through variability and deviations in pottery. Therefore, we chose terms and conceptual tools that frame the field of research but still leave enough space to be filled by empirical research later on: habitus, style of actions, agency, social practice, material (pottery) styles, entanglement, appropriation, transformation, mobility etc. (for these concepts see Bourdieu 1984; Dietler/Herbich 1998; Bourdieu/Wacquant 1992; De Marrais et al. 2004; Andresen 2004; Prien 2005; Sellet/Greaves/Yu 2006; Kaiser/Schier 2007; Boivin 2008; Bernard/Wendrich 2008; Knapp/van Dommelen 2008; Wenger 2010; Dobres/Robb 2000; Hahn 2005, 2008, 2011; Salazar 2012; Stockhammer 2011, 2012a, 2013, 2015; Salazar 2012; Hodder 2011, 2012; Huck 2012; Heitz/Guerra 2013; Burmeister 2013; Hahn/Weiss 2013).

² Latest developments in the field can be followed in the „Journal of Mixed Methods Research” by SAGE publications.

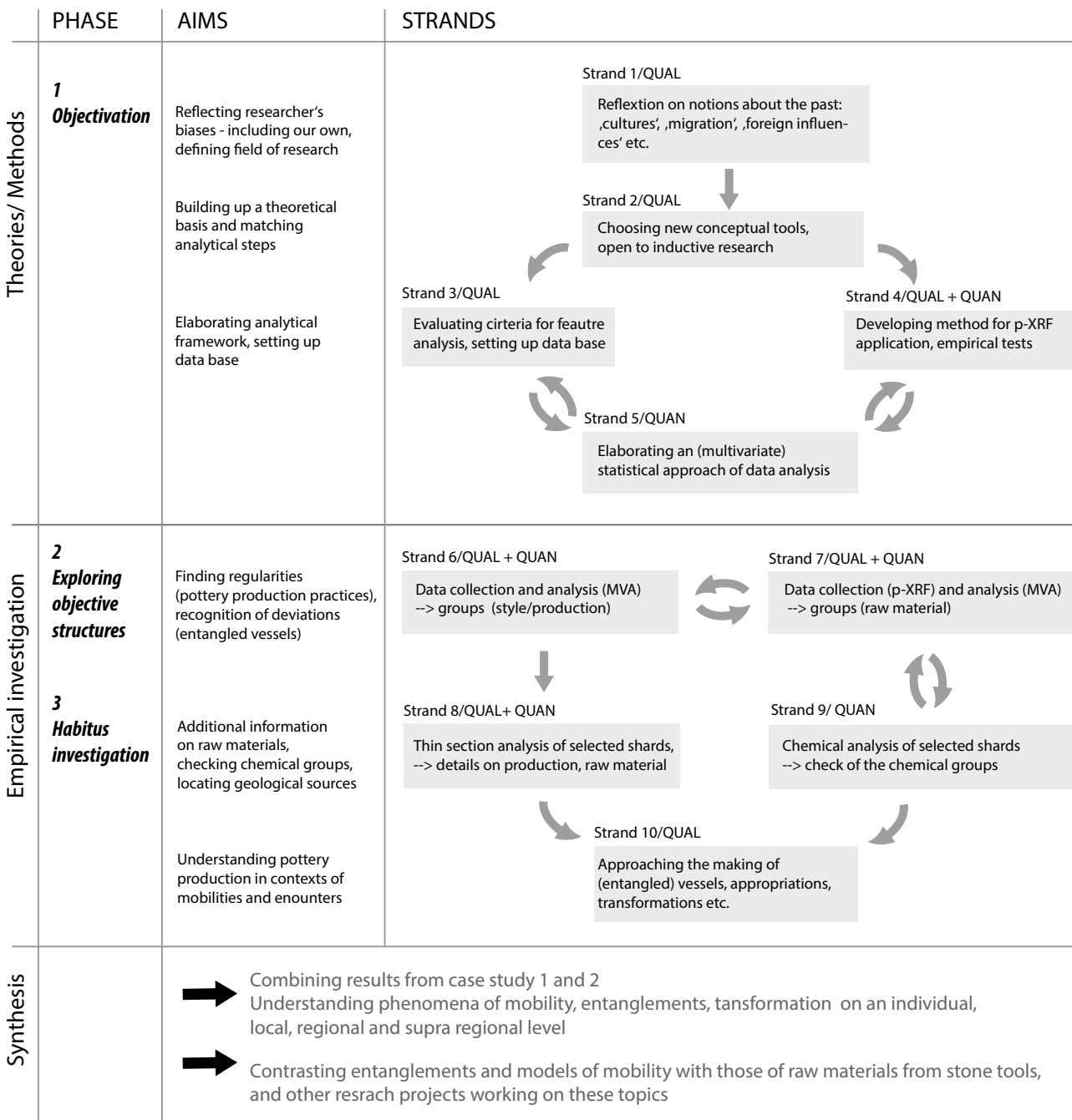


Fig. 7: Multiple phase mixed methods research design with 3 phases and 10 strands, based on Pierre Bourdieu's reflexive sociology (C. Heitz/ R. Stapfer).

- Strand 3: Elaborating an analytical framework, setting up of data base

In keeping with this approach, an objectified, descriptive analytical framework of pottery feature analysis that is open to inductive research needs to be elaborated upon: measurable aspects of shapes and shaping techniques, standardized descriptions of surfaces and surface treatments, applications and decorations, elementary and mineralogical composition clays and tempers etc. Further-

more, besides the 'scholastic biases' other biases must be taken into account in archaeology: processes of past human actions upon pottery (traces of the use and discarding of pottery), natural impact in the cultural layers (taphonomy), current human influences on archaeological finds (preservation measures) etc. A web-based database system will be set up enabling data collection by all project members working on different case studies at the same time.

- Strand 4: Elaboration of p-XRF application

Since our aim is not only to classify pottery by feature analysis but also by analysing the raw materials used for pottery production, Portable Energy Dispersive XRF (p-XRF) has been chosen in order to obtain the chemical composition of large amounts of shards (see below). However, an accurate application of this method for Neolithic coarse ware still needs to be elaborated.

- Strand 5: Elaboration of multivariate statistical approaches

Archaeological data collected by feature analysis, as well as the measured chemical elements of pottery obtained by p-XRF-analyses, needs statistical treatment. Strand 5 therefore deals with the elaboration of different statistical approaches to describe, explore and analyse the structures and relationships in the data, using the software R.

- **Phase 2: Finding regularities and deviations ('objective structures')**

Having elaborated on the overall approach, data will be collected for several key sites within the scope of the two complementary case studies (see above).

- Strand 6: Recognition of different pottery production practices

Following on from the feature analysis of the pottery regarding taphonomy, shape, decoration, raw material and techniques, data can then be explored qualitatively but also quantitatively through implementation multivariate statistics (MVA) (see below, Bourdieu 1984; 2013; Wotzka 1997; Fries 2009; Furholt 2009, 2011b; Doppler 2013). Thereby, we will reveal the objective structures in the data. These are regular combinations of pottery features, e.g. certain vessel shapes and sizes, stylistic conventions, habits of using clays with certain qualities etc. The aim is to find typical local pottery production practices as well as deviations. The latter could be vessels made in differing styles or techniques (or out of non-local raw materials), referred to as 'entangled vessels' (Stockhammer 2011; 2012).

- Strand 7: Recognition of different chemical raw material groups

In order to gain knowledge about the raw material used, the chemical composition of pottery will be measured in large quantities using p-XRF. Then, (multivariate) statistics will be used to recognize different raw material groups, as well as outliers.

With the 'objective knowledge' (Harriss 2011) gained in phase 2 of the project alone, we can not explain why certain

practices in pottery making were reproduced or why they were transformed or changed in a certain period of time. Nor would this explain the entangled vessels and what role the mobility of people and the encounter of potters from different communities of practice might have played.

- **Phase 3: Approaching the making of single vessels ('habitus')**

To understand these dynamic phenomena, we need to move beyond the perspective of socially shared pottery practices to cases concerning the individual perspective of making a single pot (*chaîne opératoire*). The concept of *habitus* links thereby the social with the actor, the socially shared dispositions and strategies of making pots with available raw materials and individual abilities being the agency in a certain situation (see also Bourdieu 1977; Boivin 2008; Stockhammer 2011; 2012a; Müller-Scheeßel/Burmeister 2006; Schreg et al. 2013). For the following, single vessels from previously elaborated groups will be selected.

- Strand 8: Thin-section analysis of selected vessels

Thin-section analysis of selected pottery shards will be performed to determine their mineralogical and petrographic composition in order to pinpoint their geological origin. Secondly, information about taphonomy and technical details (preparation of clays and temper, shaping, firing etc.) can also be gained.

- Strand 9: Chemical composition analysis of selected vessels

To check the stability of the groups elaborated by p-XRF, more precise laboratory XRF-methods will be implemented. They will deliver a wider chemical spectrum, providing us with additional information on the clays that were used. Finally, reference groups for each settlement of the considered research area can be established.

- Strand 10: Approaching the making of (entangled) vessels

Bringing together the results of the preceding strands, the production of selected vessels will be reconstructed as far as possible (see Dobres/Robb 2000; Martineau et al. 2007; Knapp/van Dommelen 2008; Knappett 2011). The choices involved in making pots will reveal the individual agency and creativity of the actors within the framework of social practice. Thereby a special focus needs to be laid on the deviant 'entangled pots' that are made from non-local raw materials, decorated in a different style or shaped with different techniques. These deviations are linked with the mobility of people, materials, things and ideas. In some

cases they might give us a glimpse at moments of encounters with the 'new'/ 'other' – different habitus so to speak – and the triggered dynamic of such situations: appropriations, rejections, transformations and the creation of new things and practices.

5. Some words on applied methods

In the following, three methods and the way we strive to apply them will be described. Their combination is well established in some fields of research but is relatively new to the topic of this project.

Portable energy dispersive XRF (p-XRF) thin-section analysis (TS)

Raw material analysis of the archaeological finds are crucial to differentiate locally and non-locally produced artefacts and thus to identify mobility, social networks and entanglements of Neolithic societies. Traditional XRF-analysis (for example WD-XRF or XRD) has been used for many years in material analysis for the provenance determination and characterisation of raw materials. The results are of high quality, although the analyses are expensive because of the time consuming preparation of the samples. Thin-section analysis is often used to get additional information about raw materials (matrix and additional non-plastic parts /"temper") and aspects of the production (chaîne opératoire) of pottery (Fig. 8). The already-existing data of the project's research area are very promising (e.g. Freudinger-Bonzon 2005; Diethelm 1994; Diethelm-Loch 1983, Nungässer/Maggetti/Stöckli 1985). However, until now only a small amount of pottery has been analysed with archeometrical methods (Maggetti 2009), even though raw material analy-

ses play an important role in the study of prehistoric societies.

The portable XRF-analysis offers an additional way to analyse the elementary composition of large quantities of artefacts in a non-destructive and rapid manner (Litzris/Zacharisas 2012; Helfert 2013; Helfert et al. 2011; Mecking et al. 2012; Shackley 2012a). The method is relatively new to our discipline and has never been applied to prehistoric pottery in Switzerland so far. In order to test the potential of p-XRF analysis for our research project we made two pre-tests with imported and local stone artefacts and selected pottery originating from different sites at Lake Bienne in October 2010 (Stapfer 2012) and March 2014. These pre-tests are promising: it is possible to discern imported black shale from local black stones as well as to differentiate clays/raw material sources of pottery originating from different sites.

The advantage of p-XRF lies in the larger amount of measurements that can be taken in a short time frame (testing up to 100 samples per day), providing a strong basis for statistical treatment of the data. Also, in practice, a portable analyser can be taken into museums and collections of heritage services. Thus, objects don't need to be taken out of their collection and transported to a laboratory but can be analysed in a non-destructive or minimally invasive manner in the institutions where they are stored (Fig. 9). Due to the lack of representative studies of Neolithic artefacts analysed by p-XRF in Switzerland, the analysing method has been developed by empirical tests (e.g. measuring time, measuring position, calibration of the analyzer see Helfert 2013) and the gathered p-XRF data has been cross-checked by traditional XRF analysis at the XRF Labo-

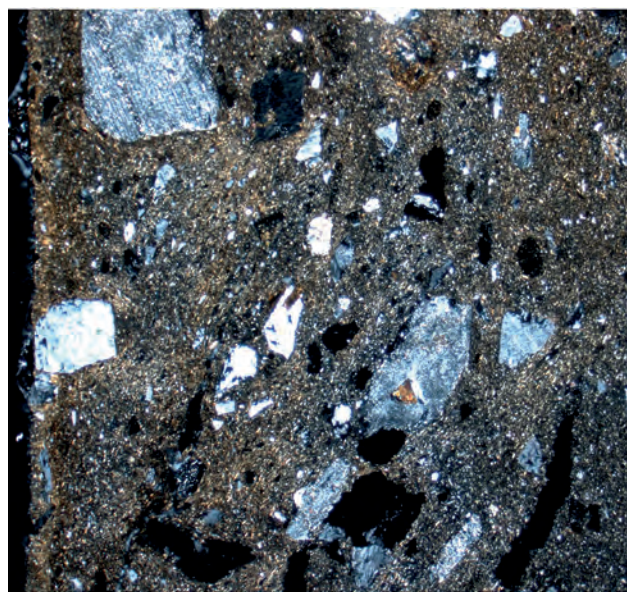
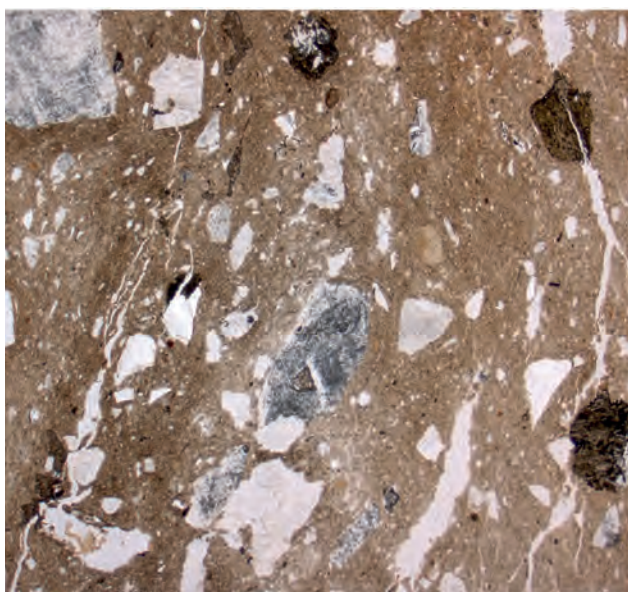


Fig. 8: Example of thin-sections representing a cut through a pottery shard in parallel and crossed polarized light (Ph. Rentzel).



Fig. 9: Example of p-XRF application (R. Stapfer).

ratory of the department of Geosciences of the University of Fribourg (head Prof. Dr. V. Serneels). The results of the traditional XRF analysis will further help to calibrate the p-XRF analyzer (see Shackley 2012b; Helfert 2013). Additional information about the production and chaîne opératoire of pottery will be obtained by thin-section analysis.

Multivariate analysis (MVA)

The classification of pottery on different analytical levels, like raw materials, modes of production and style calls for multivariate analysis of the variables. Explorative inductive statistical techniques, like e. g. cluster analysis, principal components analysis (PCA) or correspondence analysis (CA) will be evaluated and then implemented to explore structures of dependency (relations) and to explain the variance in our data (Bourdieu 1984; Bourdieu/Wacquant 1992; Bortz 1993; Baxter 1994; Shennan 1997; Zimmermann 1997). Thus, patterns of similarities can be revealed by a simultaneous observation of different variables. Such approaches have already been conducted in comparable projects (e. g. Höhn 2002; Hinz 2009; Furholt 2009, 2011; Doppler 2013, Jammer-Reynal 2006; Claßen 2008). Cluster analysis, PCA and discriminant analysis (DA) have been successfully implemented for the analysis of XRF data

and the formation of chemical groups too (e. g. Freudiger-Bonzon 2005; Papachristodoulou et al. 2006; Helfert/Mecking/Lang et al. 2011). The recognized groups reflect social practices and shared knowledge in the manufacturing processes of material culture (see above). Therefore, multivariate statistics are a highly promising way to link approaches from social science with material culture studies.

6. Intended synthesis and anticipated impact of the project

In a first step, the findings from the two case studies will be connected within the project at local, regional and supra-regional scales in order to approach social practices and individual agency in pottery production and thereby entanglements resulting out of mobilities. The appropriation/rejection of the 'new/ 'different' and the possibly triggered transformations will be studied at decade level. Secondly, we aim to discuss these results in a broader perspective, comparing them with results from the raw material provenance of stone tools. Thereby, different scales, directions of and reasons for mobility can be approached. The ultimate aim is to propose models of mobility, entanglements and

transformations in Neolithic societies that lived between Lake Neuchâtel and Lake Constance in the 1st half of the 4th millennium BC.

We think that the MMR project as sketched out in this paper is significant for archaeology, archaeometry and other disciplines working on similar topics of material culture in past societies. It will bring new insights into the following research domains:

- **Ties between Neolithic societies in Middle Europe**

Over the last 20 years, wetland archaeology has concentrated on publishing single site monographs presenting huge amounts of archaeological material and data. Our project will reveal material culture entanglements and thereby social relationships by comparing the exceptionally well-preserved Neolithic UNESCO-Heritage wetland sites on the northern Alpine periphery (3900–3500 BC) with mineral soil sites in the French Jura Mountains, Burgundy, the Upper Rhine Valley regions and upper Swabia. Obviously, the current state-of-the-art research shows many entanglements in the pottery and stone tools of these regions but profound studies to understand the phenomena have been missing.

- **Mobility in ancient societies**

In the 1950s and earlier, prehistoric migration was a topic of major concern but the various ranges of, and reasons for, mobility were neglected. New results coming from stable isotope analysis make mobilities of individuals more and more visible in ancient societies. Unfortunately, burials sites and human skeletal remains from Neolithic sites of the research area are too rare for stable isotope analysis. Since huge quantities of perfectly dated artefacts from wetland sites are available our project approaches mobility through material culture flows, where theories and methods still need to be improved. P-XRF and thin-section analysis combined with multivariate statistics will yield new insights into the frequent small-scale mobilities of individuals or into the migration processes of larger social groups. Our project promises to detect common local social practices of pottery production as well as the appropriation and use of locally available or imported stone implements.

- **Culture/cultures**

Questioning longstanding notions of archaeological ‘cultures’ in the chosen research areas will enable us to overcome problematic concepts that constrain our perceptions of, and the way in which we imagine, Neolithic societies. The project’s theoretical output will be the appropriation of Pierre Bourdieu’s reflexive sociology and his

praxeological approach to archaeology. Besides his habitus-concept, further concepts that also rest upon theories of human action will be brought together. These respect a more dynamic human-thing relationship than Bourdieu’s approach and are therefore essential in order to understand agency/social practice in the light of mobilities, flows of things and ideas, leaving space for transformations. The latter will then challenge former notions of culture in their inability to describe such phenomena.

7. Scientific collaborations and education of young scholars

The project’s research is organized in an interdisciplinary and international research network that brings together the knowledge of various disciplines (archaeology, archaeometry, geology, statistics), Universities (of Berne, Fribourg), Cultural Heritage Departments (Switzerland, France, Germany), as well as younger and experienced academics. The project’s research group is in touch with experts of the project’s scientific advisory board (P. Pétrequin, U. Seidel, and H. Schlichtherle) as well as researchers of current projects in the field. Research and education are linked by the two PhD programs, several master theses dealing with similar methodologies or topics from the same period and planned seminars/lectures given by project members for BA and MA students. In the context of the project a first international, interdisciplinary workshop has already been conducted on pottery and mobility from archaeological and anthropological perspectives where, next to experts, young scholars were also invited. (Fig. 10).

For further information on the project see also:

www.iaw.unibe.ch/forschung/abt_pa_ufg/mobilities_entanglements_and_transformations

Mobilities and Pottery Production Archaeological and Anthropological Perspectives

Workshop: 5-6 June 2015
 Institute of Archaeology (IAW), Prehistory, University of Bern



Top: Firing of pots in Ouangolodougou (Côte d'Ivoire, 2014) by Kathrin Heitz Tokpa. Bottom: Pots from the Neolithic settlement Thayngen in Museum Allerheiligen, Schaffhausen (Switzerland, 2013) by Caroline Heitz

u^b

UNIVERSITÄT
 BERN

SPONSORED BY
 EARLY CAREER RESEARCHERS
 PROMOTION FUND
 UNIVERSITY OF BERN

[mv|ub]

MITTELBAUVEREINIGUNG
 UNIVERSITÄT BERN

FNSNF

FONDS NATIONAL SUISSE
 SCHWEIZERISCHER NATIONALFONDS
 FONDO NAZIONALE SVIZZERO
 SWISS NATIONAL SCIENCE FOUNDATION

Fig. 10: Programm of the workshop 'Mobilities and Pottery Production: Archaeological and Anthropological Perspectives' held from 5 to 6 June at the University of Bern; pottery firing in northern Côte d'Ivoire in 2014 (K. Heitz-Tokpa) and pottery from the Neolithic bog settlement of Thayngen-Weier (C. Heitz).

8. References

Andresen 2004

Andresen, M. 2004. *Studien zur Geschichte und Methodik der archäologischen Migrationsforschung*. Münster/New York/München/Berlin.

Appadurai 1986

Appadurai, A. (ed.) 1986. *The Social Life of Things: Commodities in Cultural Perspective*. New York.

Arnal/Bénazet 1951

Arnal, J., Bénazet, G. 1951. *Contribution à l'étude de la poterie néolithique*. *Bulletin de la Société préhistorique française* 48: 541–564.

Bailly 2013

Bailly, M. 2013. *Le peuplement néolithique de l'Arc jurassien: esquisse pour un état des lieux*. In: Richard, A., Schifferdecker, F., Mazimann, J.-P., Bélet-Gonda, C. (eds.) *Le peuplement de l'Arc jurassien de la Préhistoire au Moyen Âge. Actes des deux journées archéologiques frontalières de l'Arc jurassien*, Delle (F)-Boncourt (CH) 16–18.11.2007. Besançon: 197–228.

Barnard/Wendrich 2008

Barnard, H., Wendrich, W. (eds.) 2008. *The Archaeology of Mobility: Old World New World Nomadism*. Los Angeles.

Bartholdy 2010

Bartholdy, S. 2010. *Der neolithische Habitus und die bandkeramischen Statuetten. Schlüsselbegriffe Bourdieus im archäologischen Kontext*. Saarbrücken.

Baxter 1994

Baxter, M. 1994. *Exploratory Multivariate Analysis in Archaeology*. Edinburgh.

Biel et al. 1998

Biel, J., Schlichtherle, H., Strobel, M., Zeeb, A. (eds.) 1998. *Die Michelsberger Kultur und ihre Randgebiete – Probleme der Entstehung, Chronologie und des Siedlungswesens. Kolloquium Hemmenhofen (D) 21.–23.02.1997 – Festschrift für Jens Lüning zum 60. Geburtstag. Materialhefte zur Archäologie in Baden-Württemberg* 43. Stuttgart.

Bleuer/Hardmeyer 1993

Bleuer, E., Hardmeyer, B. 1993. Zürich „Mozartstrasse“. *Neolithische und bronzezeitliche Seeufersiedlungen. Die Neolithische Keramik. Zürcher Denkmalpflege. Archäologische Monographien* 18. Egg/Zürich.

Boivin 2008

Boivin, N. 2008. *Material Cultures, Material Minds. The Impact of Things on Human Thought, Society, and Evolution*. Cambridge.

Bortz 1993

Bortz, J. 1993. *Statistik für Sozialwissenschaftler* 4. Berlin.

Bourdieu 1977

Bourdieu, P. 1977. *Outline of a theory of practice*. Palo Alto.

Bourdieu 1984

Bourdieu, P. 1984. *Distinction: A social critique of the judgment of taste*. Cambridge.

Bourdieu 2004

Bourdieu, P. 2004. *Science of science and reflexivity*. Palo Alto.

Bourdieu/Wacquant 1992

Bourdieu, P., Wacquant, L. D. 1992. *An invitation to reflexive sociology*. Cambridge, UK.

Burmeister 2013

Burmeister, St. 2013. *Migration und Ethnizität: Zur Konzeptualisierung von Mobilität und Identität*. In: Eggert, M. K. H., Veit, U. (eds.): *Theorie in der Archäologie: Zur jüngeren Diskussion in Deutschland. Unter Mitarbeit von Melanie Augustein*. Tübinger Archäologische Taschenbücher 10. Münster/New York/München/Berlin: 228–267.

Burri 2007

Burri, E. 2007. *La station lacustre de Concise 2. La céramique du Néolithique moyen. Analyse spatiale et histoire des peuplements*. CAR 109. Lausanne.

Burri 2009

Burri, E. 2009. *La région des Trois-Lacs (Suisse) au Néolithique moyen II: culture matérielle et histoire des peuplements*. *Antropo* 18: 47–62.

Burri-Wyser/Loubier 2011

Burri-Wyser, E., Loubier, J.-C. 2011. *Modélisation spatiale de la dynamique de peuplement du Plateau Suisse au Néolithique moyen*. *M@ppemonde* 101 (2011.1). www.mappemonde.mgm.fr/num29/articles/art11104.html (4.3.2014).

Cecey et al. 2006

Cecey, Ch., Günther, D., Hubert, V., Hunger, K., Hildbrand, E., Kaeser, M.-A., Lehmann, E., Müller-Scheeßel, N., Wörle-Soares, M., van Willigen, S. 2006. *Neue archäometallurgische Untersuchungen zum Beginn der Kupferverarbeitung in der Schweiz*. *Archäologie Schweiz* 29/1: 24–33.

Childe 1925

Childe, V. G. 1925. *The Dawn of European Civilization*. London.

Childe 1950

Childe, V. G. 1950. *Prehistoric migrations in Europe*. Oslo.

Claßen 2008

Claßen, E. 2008. *Early Neolithic Social Networks in Western Germany*. In: Posluschny, A., Lambers, K., Herzog, I. (eds.) *Layers of perception – Proceedings of the 35th International Conference on Computer Applications and Quantitative Methods in Archaeology (CAA) Berlin (D) April 2–6, 2007*. Bonn: 372–378.

Creswell/Plano Clark 2010

Creswell, J. W., Plano Clark, V. L. 2010. *Designing and conducting mixed methods research*. Thousand Oaks.

Dammers 2009

Dammers, B., 2009. *Stil, Habitus, Widerstand: Zur Interpretation von Variabilität in der spätneolithischen Keramik von Uivar*. *Analele Banatului, SN., Arheologie- Istorie* 17: 89–96.

De Marrais/Gosden/Renfrew 2004

De Marrais, E., Gosden, C., Renfrew, C. (eds.) 2004. *Rethinking Materiality: The Entanglement of Mind with the Material World*. Oxford.

Demoule 1999

Demoule, J. P. 1999. *Ethnicity, culture and identity: French archaeologists and historians*. *Antiquity* 73: 190–198.

Diethelm-Loch 1983

Diethelm-Loch, I. 1983. *Das Material der geschliffenen Steinbeile aus der West- und Nordwestschweiz im Museum für Völkerkunde Basel*. Diplomarbeit, Universität Basel (unpublished).

Diethelm 1989

Diethelm, I., 1989. Aphanit ein pseudowissenschaftlicher Begriff? Eine mineralogisch-petrographische Bilanz. *Jahrbuch der Schweizerischen Gesellschaft für Ur- und Frühgeschichte* 72: 201–214.

Diethelm 1994

Diethelm, I. 1994. *Das Material der geschliffenen Steinbeile aus der West- und Nordwestschweiz im Museum für Völkerkunde Basel*. *Minaria Helvetica* 14a: 15–21.

Dietler/Herbich 1998

Dietler, M., Herbich, I. 1998. *Habitus, techniques, style: an integrated approach to the social understanding of material culture and boundaries*. In: Stark, M.T. (ed.) *The Archaeology of Social Boundaries*. Washington DC: 232–63.

Dobres/Robb 2000

Dobres, M.-A., Robb, J. 2000. *Agency in Archaeology*. London.

Doppler 2013

Doppler, Th. 2013. *Archäozoologie als Zugang zur Sozialgeschichte in der Feuchtbodenarchäologie. Forschungsperspektiven am Fallbeispiel der neolithischen Seeufersiedlung Arbon Bleiche 3 (Schweiz)*. Dissertation, Universität Basel. Basel.

Doppler et al. 2012

Doppler, T., Pichler, S., Röder, B., Schibler, J. 2012. *All in good tradition? Some thoughts on cultural markers in a late Neolithic lakeside dwelling from Switzerland*. In: Midgley, M. S., Sanders, J. (eds.) *Lake dwellings after Robert Munro. Proceedings from the Munro International Seminar: the lake dwellings of Europe*, University of Edinburgh (UK) Oct. 2010. Leiden: 93–112.

Doppler/Ebersbach 2011

Doppler, T., Ebersbach, R. 2011. *Grenzenlose Jungsteinzeit? Betrachtungen zur kulturellen Heterogenität im schweizerischen Neolithikum – ein Projektbericht*. In: Doppler, Th., Ramminger, B., Schimmelpfennig, D. (eds.) *Grenzen und Grenzräume. Fokus Jungsteinzeit. Berichte der AG Neolithikum 2*. Kerpen-Loogh: 205–215.

Driehaus 1960

Driehaus, J. 1960. *Die Altheimer Gruppe und das Jungneolithikum in Mitteleuropa*. Mainz.

Dubouloz et al. 2010

Dubouloz, J., Gronenborn, D., Manolakakis, L., Weller, O. 2010. *MK-Project – Emergence of social complexity: enclosures, resources and territoriality during the Neolithic. A French-German research program on the Michelsberg culture. Project poster presented at the European Association of Archaeologists meeting in Den Haag (NL) 2010*. www.anr-mk-projekt.fr/spip.php?lang=en&page=sommaire (24.3.2014).

Ebersbach 2013

Ebersbach, R. 2013. *Houses, Households, and Settlements: Architecture and Living Space*. In: Menotti F., O'Sullivan, A. (eds.) *The Oxford Handbook of Wetland Archaeology*. Oxford: 283–301.

Eggert 2013

Eggert, M. K. H. 2013. „Kultur“: Zum praktischen Umgang mit einem Theoriekonzept. In: Eggert, M. K. H., Veit, U. (eds.) *Theorie in der Archäologie: Zur jüngeren Diskussion in Deutschland*. Unter

Mitarbeit von Melanie Augustin. *Tübinger Archäologische Taschenbücher* 10. Münster/New York/München/Berlin: 13–62.

Freudiger-Bonzon 2005

Freudiger-Bonzon, J. 2005. *Archaeometrical study (petrography, mineralogy and chemistry) of Neolithic Ceramics from Arbon Bleiche 3 (Canton of Thurgau, Switzerland)*. *GeoFocus* 11. Fribourg.

Fries 2009

Fries, Ch. J. 2009. *Bourdieu's reflexive sociology as a theoretical basis for mixed methods research*. *Journal of Mixed Methods Research* 3/4: 326–348.

Furholt 2008

Furholt, M. 2008. *Pottery, cultures, people? The European Baden material re-examined*. *Antiquity* 82: 617–628.

Furholt 2009

Furholt, M. 2009. *Die nördlichen Badener Keramikstile im Kontext des mitteleuropäischen Spätneolithikums (3650–2900 v. Chr.)*. *Studien zur Archäologie in Ostmitteleuropa* 3. Neumünster.

Furholt 2011

Furholt, M. 2011. *Materielle Kultur und räumliche Strukturen sozialer Identität im 4. und 3. Jahrtausend in Mitteleuropa. Eine methodische Skizze*. In: Hansen, S., Müller, J. (eds.) *Sozialarchäologische Perspektiven: Gesellschaftlicher Wandel 5000–1500 v. Chr. zwischen Atlantik und Kaukasus, Beiträge zur Tagung in Kiel (D) 2007*. *Archäologie in Eurasien* 24. Darmstadt: 243–267.

Gerber et al. 1994

Gerber, Y., Haenicke, C., Hardmeyer, B. 1994. *Jungsteinzeitliche Ufersiedlungen im Zürcher Seefeld. Ausgrabungen Kanalisations-sanierung 1986–1988 (Zürich Kan. San)*. Band 1: *Die Keramik*. *Berichte der Zürcher Denkmalpflege* 22. Egg.

Gleser/Becker 2010

Gleser, R., Becker, V. (eds.) 2010. *Mitteleuropa im 5. Jahrtausend vor Christus. Beiträge zur Internationalen Konferenz in Münster (D) 2010*. Berlin.

Guest 2012

Guest, G. 2012. *Describing Mixed Methods Research: An Alternative to Typologies*. *Journal of Mixed Methods Research* 7/2: 141–151.

Hafner 2005

Hafner, A. 2005. *Sutz-Lattringen, Hauptstation. Rettungsgrabungen 1988–2003. Neolithische Ufersiedlungen*. *Archäologie im Kanton Bern* 6A: 41–48.

Hafner 2011

Hafner, A. 2011. *Neolithic and Bronze Age Pile-dwelling sites of Lake of Biel. Twenty years of rescue excavations at Sutz-Lattringen (Canton of Bern/Switzerland)*. *Notizie Archeologiche Bergomensi (in omaggio di Raffaele de Marinis)* 19: 41–48.

Hafner/Heitz/Stapfer 2014

Hafner, A., Heitz, C., Stapfer, R. 2014. *Pile-dwellings of the Neolithic and the Bronze Age in Switzerland. Longterm research and future tasks*. In: von Carnap-Bornheim C. (ed.) *Quo vadis? Status quo and future perspectives of longterm excavations in Europe*. *Schleswig*: 59–84.

Hafner/Suter 1997

Hafner, A., Suter, P. J. 1997. *Entwurf eines neuen Chronologie-Schemas zum Neolithikum des schweizerischen Mittellandes*. *Archäologisches Korrespondenzblatt* 27: 549–565.

Hafner/Suter 2002

Hafner, A., Suter, P. J. 2002. Das Neolithikum der Schweiz im 4. Jahrtausend v. Chr. - Traditionen, Einflüsse und Entwicklungen. *Archäologische Informationen* 24/2: 291–309.

Hafner/Suter 2003

Hafner, A., Suter, P. J. 2003. Das Neolithikum in der Schweiz – Fundortdaten/14C-Daten – Dendrodaten – Neolithic in Switzerland. online publication: www.jungsteinsite.de (28.3.2013)

Hafner/Suter 2005a

Hafner, A., Suter, P. J. 2005a. Lüscherz, Innere Dorfstation. Ausschnitte einer jungneolithischen Ufersiedlung. *Archäologie im Kanton Bern* 6B: 389–430.

Hafner/Suter 2005b

Hafner, A., Suter, P. J. 2005b. Neolithikum: Raum/Zeit-Ordnung und neue Denkmodelle. *Archäologie im Kanton Bern* 6B: 431–498.

Hahn 2005

Hahn, H. P. 2005. *Materielle Kultur. Eine Einführung*. Berlin.

Hahn 2008

Hahn, H. P. 2008. Diffusionism, Appropriation and Globalization. Some Remarks on Current Debates in Anthropology. *Anthropos* 103: 191–202.

Hahn 2011

Hahn, H. P. 2011. Antinomien kultureller Aneignung: Einführung. *Zeitschrift für Ethnologie* 136/1: 11–26.

Hahn/Weiss 2013

Hahn, H. P., Weiss, H. (eds.) 2013. *Mobility, Meaning and Transformations of Things. Shifting contexts of Material Culture through Time and Space. Proceedings of the Conference 'Itineraries of the Material' in Frankfurt (D) 10. 2011*. Oxford.

Harrits 2011

Harrits, G. S. 2011. More than a method? A discussion of paradigm differences with mixed methods research. *Journal of Mixed Methods Research* 5/2: 150–166.

Heitz/Guerra 2013

Heitz, C., Guerra, C. 2013. *Tagungsbericht Kulturelle Aneignung – kulturelle Verflechtung*. Basel. In: *H-Soz-u-Kult*, www.hsozkult.geschichte.hu-berlin.de/tagungsberichte/id=4697 (28.3.2013)

Helfert et al. 2011

Helfert, M., Mecking, O., Lang, F. von Kaenel, H.-M. 2011. Neue Perspektiven für die Keramikanalytik. Zur Evaluation der portable energiedispersiven Röntgenfluoreszenzanalyse (P-ED-RFA) als neues Verfahren für die geochemische Analyse von Keramik in der Archäologie. *Frankfurter elektronische Rundschau zur Altertumskunde* 14: 1–30. www.ferajournal.eu (12.9.2012).

Helfert 2013

Helfert, M. 2013. Die portable energiedispersive Röntgenfluoreszenzanalyse (P-ED-RFA) – Studie zu methodischen und analytischen Grundlagen ihrer Anwendung in der archäologischen Keramikkforschung. In: Ramminger, B., Stilborg, O., Helfert, M. (eds.) *Naturwissenschaftliche Analysen vor- und frühgeschichtlicher Keramik III. Methoden, Anwendungsbereiche, Auswertungsmöglichkeiten*. Bonn: 14–47.

Hinz 2009

Hinz, M. 2009. Eine multivariate Analyse Aunjetitzer Fundgesellschaften. *Universitätsforschungen zur Prähistorischen Archäologie* 173. Bonn.

Hodder 1979

Hodder, I. 1979. Economic and social stress and material culture patterning. *American Antiquity* 44: 446–454.

Hodder 2011

Hodder, I. 2011. Human-Thing- Entanglement: Towards an Integrated Archaeological Perspective. *Journal of the Royal Anthropological Institute* 17: 154–177.

Hodder 2012

Hodder, I. 2012. *Entangled. An Archaeology of the Relations between Humans and Things*. Oxford.

Höhn 2002

Höhn, B. 2002. *Michelsberger Kultur in der Wetterau*. *Universitätsforschungen zur prähistorischen Archäologie* 87. Bonn.

Huck 2012

Huck, Ch. 2012. *Special Section on Cultural Appropriation. Introduction: Mobility, Transfers, and Cultural Appropriation*. *Transfers* 2/3: 76–80.

Ingold 2013

Ingold, T. 2013. *Making: Anthropology, Archaeology, Art and Architecture*. London.

Insoll 2007

Insoll, T. (ed.) 2007. *The Archaeology of Identities. A Reader*. London.

Jammet-Reynal 2006

Jammet-Reynal, L. 2006. *La céramique de Clairvaux VII (Jura, France) dans son contexte regional. Typologie, etude quantitative et sériation. Travail de diplôme, Université de Genève, 2 vol. (unpublished)*.

Jammet-Reynal/Pétréquin/Besse 2010

Jammet-Reynal, L., Pétréquin, P., Besse, M. 2010. *Définition du Néolithique Moyen Bourguignon du Jura (4'000–3'600 AV. J.-C.)*. *Premiers Résultats*. *Internéo* 8: 101–109.

Jammet-Reynal/Pétréquin/Besse 2012

Jammet-Reynal, L., Pétréquin, P., Besse, M. 2012. *The Jura mountains at the end of the fifth millennium BC – interactions with the Rhine Valley and Swabia*. In: Gleser, R., Becker, V. (eds.) *Mitteleuropa im 5. Jahrtausend vor Christus. Beiträge zur Internationalen Konferenz in Münster 2010*. Berlin: 253–266.

Jammet -Reynal 2012

Jammet -Reynal, L. 2012. *Le Néolithique Moyen Bourguignon dans l'arc jurassien (4400-3600 av. J.-C.)*. *Définition d'un groupe céramique*. *Thèse de doctorat, Université de Genève*. (unpublished).

Jeunesse 1997

Jeunesse, Ch. 1997. *Die Michelsberger Kultur und ihre Randgebiete. Probleme der Entstehung, Chronologie und des Siedlungswesens*. *Bulletin de la Société préhistorique française* 94 1/2: 143–145.

Jones 1997

Jones, S. 1997. *The Archaeology of Ethnicity: Constructing identities in past and present*. London.

Joye 2008

Joye, C. 2008. *Hauterive-Champréveyres, 15. Le village du Cortailod classique: étude de l'outillage en roches polies*. *Archéologie neuchâteloise* 40. Neuchâtel.

Kaiser/Schier 2007

Kaiser, E., Schier, W. 2007. *Mobilität, Migration und Innovation als archäologischer Forschungsgegenstand. Exzellenzcluster 364 „Topoi“ – The Formation and Transformation of Space and Knowledge in Ancient Civilizations and der Freien Universität Berlin und der Humboldt Universität zu Berlin. Forschungsberichte. Berlin.*

Kerig/Shennan 2012

Kerig, T., Shennan, S. 2012. *Zur kulturellen Evolution Europas im Neolithikum – Begriffsbestimmung und Aufgabenstellung*. In: Gleser, R., Becker, V. (eds.): *Mitteleuropa im 5. Jahrtausend vor Christus Beiträge zur Int. Konferenz in Münster 2010*. Berlin: 105–114.

Knapp/van Dommelen 2008

Knapp, A. B., van Dommelen, P. 2008. *Past Practices: Rethinking Individual and Agents on Archaeology*. *Cambridge Archaeological journal* 18: 15–34.

Knappett 2010

Knappett, C. 2010. *Networks of Objects, Meshworks of Things*. In: Ingold, T. (ed.) *Redrawing Anthropology. Materials, Movements, Lines. Anthropological Studies of Creativity and Perception*. Farnham: 45–63.

Knopf 2002

Knopf, T. 2002. *Kontinuität und Diskontinuität in der Archäologie. Quellenkritisch vergleichende Studie*. *Tübinger Schriften zur Ur- und Frühgeschichtlichen Archäologie* 6. Münster/New York/München/Berlin.

Kossinna 1911

Kossinna, G. 1911. *Die Herkunft der Germanen: Zur Methode der Siedlungsarchäologie*. Würzburg.

Kustermann 1984

Kustermann, A.-C. 1984. *Die jungneolithische Pfyngruppe im unteren Zürichsee-Becken*. *Zürcher Studien zur Archäologie* 2. Zürich.

Latour 2007

Latour, B. 2007. *Eine neue Soziologie für eine neue Gesellschaft. Einführung in die Akteur-Netzwerk-Theorie*. Frankfurt a. M.

Lefranc et al. 2011

Lefranc, P., Denaire, A., Boes, E., Arbogast, R.-M., Billoin, D. 2011. *L'Habitat Néolithique récent de Geispolsheim „Forlen“ (Bas-Rhin). Contribution à la périodisation de la culture de Munzingen et à l'étude de ses relations avec les cultures du Plateau Suisse et du lac de Constance*. *Revue Archéologique de l'Est. Dijon*: 60; 45–82.

Leroi-Gourhan 1964

Leroi-Gourhan, A. 1964. *Le Geste et la Parole – Technique et langage*. Paris.

Leuzinger, U. 2000. *Die jungsteinzeitliche Seeufersiedlung Arbon-Bleiche 3. Befunde*. *Archäologie im Thurgau* 9. Frauenfeld.

Lichter 2010

Lichter, C. (ed.) 2010. *Jungsteinzeit im Umbruch. Die „Michelsberger Kultur“ und Mitteleuropa vor 6000 Jahren. Katalog zur Ausstellung im Badischen Landesmuseum Schloss Karlsruhe 20.11.2010-15.5.2011*. Karlsruhe.

Liritzis/Zacharias 2012

Liritzis, I., Zacharias, N. 2012. *Portable XRF of Archaeological Artifacts: Current Research, Potentials and Limitations*. In: Shackley, M. S. (ed.) *X-Ray Fluorescence Spectrometry (XRF) in Geoarchaeology*. New York/Dordrecht/Heidelberg/London: 109–144.

Lüning 1967

Lüning, J. 1967. *Die Michelsberger Kultur. Ihre Funde in zeitlicher und räumlicher Gliederung*. *Berichte der Römisch-Germanischen Kommission* 48: 1–350.

Lüning 1972

Lüning, J. 1972. *Zum Kulturbegriff im Neolithikum*. *Prähistorische Zeitschrift* 47: 145–173.

Maggetti 2009

Maggetti, M. 2009. *Neolithic pottery from Switzerland: raw materials and manufacturing processes*. In: Shortland, A. J., Freestone I. C., Rehren, T. (eds.) *From Mine to Microscope. Advances in the Study of Ancient Technology*. Oxford: 29–42.

Maggetti 2012

Maggetti, M. 2012. *Warum so wenig karbonatische Magerung in schweizerischer neolithischer Keramik? In: Boschetti-Maradi, A., de Capitani, A., Hochuli, S., Niffeler, U. (eds.) Form, Zeit und Raum, Grundlagen für eine Geschichte aus dem Boden. Festschrift für Werner E. Stöckli zum 65. Geburtstag*. *Antiqua* 50. Basel.

Martineau et al. 2007

Martineau, R., Walter-Simonnet, A.-V., Grobéty, B., Buatier, M. 2007. *Clay resources and technical choices for Neolithic pottery (Chalain, Jura, France): Chemical, mineralogical and grain-size analyses*. *Archaeometry* 49/1: 23–52.

Matuschik 2011

Matuschik, I. 2011. *Die Keramikfunde von Hornstaad-Hörnle I-VI. Besiedlungsgeschichte der Fundstelle und Keramikentwicklung im beginnenden 4. Jahrtausend v. Chr. im Bodenseeraum*. *Siedlungsarchäologie im Alpenvorland* 12. Stuttgart.

Matuschik et al. 2010

Matuschik, I., Strahm, C., Eberschweiler, B., Fingerlin, G., Hafner, A., Kinsky, M., Mainberger, M. and Schöbel, G. (eds.) 2010. *Vernetzungen. Aspekte siedlungsarchäologischer Forschung. Festschrift für Helmut Schlichtherle zum 60. Geburtstag*. Freiburg im Breisgau.

Mecking/Behrendt/Mielke 2012

Mecking, O., Behrendt, S., Mielke, D. 2012. *Grundlagenforschungen zur Etablierung der p-RFA in der Keramikforschung*. In: Schlütter, F., Greiff, S., Prange, M. (eds.) *METALLA, Sonderheft* 5: 154–156.

Miller 1998

Miller, D. (ed.) 1998. *Material Cultures*. London.

Miller 2005

Miller, D. (ed.) 2005. *Materiality*. Durham.

Moreau 2010

Moreau, C. 2010. *La céramique du Néolithique moyen II de l'Yonne à la Saône, entre 4300 et 3400 avant notre ère. Thèse de doctorat, Université de Bourgogne, 2 vol.* <http://tel.archives-ouvertes.fr/tel-00596511/> (15.3.2013)

Müller-Scheeßel/Burmeister 2006

Müller-Scheeßel, N., Burmeister, St. 2006. *Einführung – Die Identifizierung sozialer Gruppen*. In: Müller-Scheeßel, N.,

Burmeister, St. (eds.) Soziale Gruppen – kulturelle Grenzen. Die Interpretation sozialer Identitäten in der Prähistorischen Archäologie. Tübinger archäologische Taschenbücher 5. Münster: 9–38.

Nungässer/Maggetti 1978

Nungässer, W., Maggetti, M. 1978. Mineralogisch-petrographische Untersuchung der neolithischen Töpferware vom Burgäschisee. *Bulletin Société Fribourgeoise des Sciences Naturelles* 67/2: 152–173.

Nungässer/Maggetti/Stöckli 1985

Nungässer, W., Maggetti, M., Stöckli, W. E. 1985. Neolithische Keramik von Twann – Mineralogische und Petrographische Untersuchungen. *Jahrbuch der Schweizerischen Gesellschaft für Ur- und Frühgeschichte* 68: 7–40.

Papachristodoulou et al. 2006

Papachristodoulou, Ch., Oikonomou, A., Ioannides, K., Gravani, K. 2006. A study of ancient pottery by means of X-ray fluorescence spectroscopy, multivariate statistics and mineralogical analysis. *Analytica Chimica Acta* 573–574: 347–353.

Pétrequin 1986

Pétrequin, P. (ed.) 1986. Le Néolithique moyen Bourguignon (N.M.B.). Actes du colloque de Belfia (F) 4–5 juin 1983. *Archives suisses d'Anthropologie* 48/2.

Pétrequin 1993

Pétrequin, P. 1993. North Wind, south wind. Neolithic technical choices in the Jura Mountains, 3700–2400 BC. In: Lemonnier, P. (ed.) *Technological choices. Transformation in material cultures since the Neolithic*. London: 36–76.

Pétrequin/Jeudy/Jeunesse 1993

Pétrequin, P., Jeudy, F., Jeunesse, C. 1993. Neolithic Quarries, the Exchange of Axes and Social Control in the Southern Vosges. In: Scarre, C., Healy, F. (eds.) *Trade and Exchange in Prehistoric Europe. Proceedings of a Conference held at the University of Bristol (UK) April 1992*. *Oxbow Monographs* 33. Oxford: 45–60.

Pétrequin et al. 1987/1988

Pétrequin, P., Chastel, J., Giligny, F., Pétrequin, A.-M. and Saintot, S. 1987/1988. Reinterpretation de la civilisation Saône-Rhône. Une approche des tendances culturelles du Néolithique final. *Gallia Préhistoire, Fouilles et Monuments archéologiques en France métropolitaine* 30: 1–89.

Pétrequin et al. 2012

Pétrequin, P., Cassen, S., Errera, M., Klassen, L., Sheridan, A., Pétrequin, A.-M. (eds.) 2012. *JADE. Grandes haches alpines du Néolithique européen. Ve et IVe millénaires av. J.-C.* Besançon.

Piningre 1974

Piningre, J.-F. 1974. Un aspect de l'économie néolithique: le problème de l'aphanite en Franche-Comté et dans les régions limitrophes. *Annales littéraires de l'Université de Besançon* 158. Paris.

Prien 2005

Prien, R. 2005. *Archäologie und Migration. Vergleichende Studien zur archäologischen Nachweisbarkeit von Migrationsbewegungen*. Bonn.

Rheinberg 2007

Rheinberg, H.-J. 2007. *Historische Epistemologie zur Einführung*. Hamburg.

Robb 2010

Robb, J. 2010. Beyond Agency. *World Archaeology* 42/4: 493–520.

Roberts/Vander Linden 2011

Roberts, B. W., Vander Linden, M. 2011. Investigating Archaeological Cultures: Material Culture, Variability, and Transmission. In: Roberts, B. W., Vander Linden, M. (ed.) *Investigation Archaeological Cultures. Material Culture, Variability, and Transmission*. New York/Heidelberg/London: 1–21.

Salazar 2012

Salazar, N. B. 2012. Towards an Anthropology of Cultural Mobility. *Crossings. Journal of Migration and Culture* 1: 53–65.

Schreg et al. 2013

Schreg, R., Zerres, J., Pantermehl, H., Werfers, S., Grundwald, L., Gronenborn, D. 2013. Habitus – ein soziologisches Konzept in der Archäologie. www.archaeologik.blogspot.de/2013/12/habitus-ein-soziologisches-konzept-in.html (Stand: 24.3.2014).

Schwartz-Shea/Yanow 2012

Schwartz-Shea, P., Yanow, D. 2012. *Interpretative Research Design. Concepts and Processes*. *Routledge Series on Interpretative Methods*. New York.

Seidel 2008

Seidel, U. 2008. Michelsberger Erdwerke im Raum Heilbronn. *Materialhefte zur Archäologie in Baden-Württemberg* 81/1–2. Stuttgart.

Seidel 2011

Seidel, U. 2011. Michelsberger Besiedlung im mittleren Neckarland und im Kraichgau – Überlieferungsdichten und Interpretation. In: Daim, F., Gronenborn, D., Schreg, R. (eds.) *Strategien zum Überleben. Umweltkrisen und ihre Bewältigung*. *RGZM-Tagungen Bd. 1*. Mainz: 143–154.

Seidel 2013

Seidel, U. 2013. Wechselnde Überlieferungsdichten von Fundstellen an der Wende vom 5. zum 4. Jahrtausend v.Chr. – am Beispiel der Michelsberger Besiedlung im nördlichen Baden-Württemberg. In: Gleser, R., Becker, V. (eds.) *Mitteuropa im 5. Jahrtausend vor Christus. Beiträge zur Internationalen Konferenz in Münster 2010 (D)*. Berlin: 291–307.

Sellet/Greaves/Yu 2006

Sellet, F., Greaves, R., Yu, P.-L. (eds.) 2006. *Archaeology and Ethnoarchaeology of Mobility*. Gainesville.

Shackley 2012a

Shackley, M. S. 2012a. An Introduction to X-Ray Fluorescence (XRF) Analysis in Archaeology. In: Shackley, M. S. (ed.) *X-Ray Fluorescence Spectrometry (XRF) in Geoarchaeology*. New York/Dordrecht/Heidelberg/London: 7–44.

Shackley 2012b

Shackley, M. S. 2012b. Portable X-ray Fluorescence Spectrometry (pXRF): The Good, the Bad, and the Ugly. Online exclusive essay for *Archaeology Southwest Magazine* 26.2. www.archaeology-southwest.org/pdf/pXRF_essay_shackley.pdf (4.3.2014).

Shanks/Tilly 1987

Shanks, M., Tilly, C. 1987. *Social Theory and Archaeology*. Albuquerque.

Shennan 1997

Shennan, S. 1997. *Quantifying Archaeology*. Edinburgh.

Stapfer 2012

Stapfer, R. 2012. Kontakte nach Westen. Zur Verbreitung des Néolithique moyen bourguignon in der Schweiz. In: Boschetti-Maradi, A., De Capitani, A., Hochuli, S. et al. (eds.) *Form, Zeit und Raum. Grundlagen für eine Geschichte aus dem Boden*.

Festschrift für Werner E. Stöckli zum 65. Geburtstag. *Antiqua* 50. Basel: 105–115.

Stockhammer 2011

Stockhammer, P. W. 2011. Von der Postmoderne zum practice turn. *Ethnographisch Archäologische Zeitschrift* 52/2: 188–124.

Stockhammer 2012

Stockhammer, P. W. 2012. Performing the Practice Turn in Archaeology. *Transcultural Studies* 1: 6–39.

Stockhammer 2013

Stockhammer, P. W. 2013. From Hybridity to Entanglement, from Essentialism to Practise. In: van Pelt, P. (ed.) *Archaeology and Cultural Mixture. Archaeological Review from Cambridge* 28/1: 11–28.

Stockhammer 2015

Stockhammer, P.W. 2015 Lost in Things – An Archaeologist's Perspective on the Epistemological Potential of Objects. In: Bösch, S, Gläser, J., Schubert, C. (eds.) *Material Objects as a Challenge to Empirical Research. Nature and Culture* 10, 3, 269–283.

Stöckli 1981a

Stöckli, W. E. 1981a. Die Cortailod-Keramik der Abschnitte 6 und 7. Die neolithischen Ufersiedlungen von Twann Bd. 10. Schriftenreihe der Erziehungsdirektion des Kantons Bern. Bern.

Stöckli 1981b

Stöckli, W.E. 1981b. Die Keramik der Cortailod-Schichten. Die neolithischen Ufersiedlungen von Twann Bd. 20. Schriftenreihe der Erziehungsdirektion des Kantons Bern. Bern.

Stöckli 2009

Stöckli, W. E. 2009. Chronologie und Regionalität des jüngeren Neolithikums (4300–2400 v. Chr.) im Schweizer Mittelland, in Süddeutschland und in Ostfrankreich. *Antiqua* 45. Basel.

Suter 1987

Suter, P. J. 1987. Zürich „Kleiner Hafner“. Tauchgrabungen 1981–1984. *Berichte der Zürcher Denkmalpflege. Archäologische Monographien* 3. Zürich.

Teddlie/Tashakkori 2009

Teddlie, C., Tashakkori, A. 2009. *Foundations of mixed methods research: Integrating quantitative and qualitative approaches in the social and behavioural sciences.* Thousand Oaks.

Vander Lindern/Roberts 2011

Vander Lindern, M., Roberts, B. 2011. A Tale of Two Countries: Contrasting Archaeological Culture History in British and French Archaeology. In: Roberts, B. W., Vander Linden, M (eds.) *Investigation Archaeological Cultures. Material Culture, Variability, and Transmission.* New York/Heidelberg/London: 23–40.

Veit 1990

Veit, U. 1990. Kulturanthropologische Perspektiven in der Urgeschichtsforschung: einige forschungsgeschichtliche und wissenschaftstheoretische Vorüberlegungen. *Urgeschichte als Kulturanthropologie. Festschrift zum 70. Geburtstag von Karl J. Narr. Saeculum* 41: 182–214.

Veit 2011

Veit, U. 2011. Archäologie als Wissenschaftsgeschichte. *Ethnographisch Archäologische Zeitschrift* 52/1: 34–58.

Vogt 1934

Vogt, E. 1934. Zum schweizerischen Neolithikum. *Germania* 18: 89–94.

Vogt 1967

Vogt, E. 1967. Ein Schema des schweizerischen Neolithikums. *Germania* 45: 1–20.

Von Gonzenbach 1949

Von Gonzenbach, V. 1949. *Die Cortailodkultur in der Schweiz.* Basel.

Wenger 2010

Wenger, E. 2010. Communities of practice and social learning systems: the career of a concept. In: Blackmore, C. (ed.) *Social Learning Systems and communities of practice.* www.wenger-trayner.com/resources/publications/cops-and-learning-systems/ (12.2.2016)

Wey 2001

Wey, O. 2001. *Die Cortailod-Kultur in der Zentralschweiz. Studien anhand der Keramik und des Hirschgeweihmaterials.* Archäologische Schriften Luzern 9. Luzern.

Wey 2012

Wey, O. 2012. *Die Cortailod-Kultur am Burgäschisee.* Acta Bernensia XIII. Bern.

Willms 1980

Willms, C. 1980. *Die Felsgesteinartefakte der Cortailod-Schichten. Die neolithische Ufersiedlung von Twann Bd. 9. Schriftenreihe der Erziehungsdirektion des Kantons Bern.* Bern.

Winiger 1971

Winiger, J. 1971. *Das Fundmaterial von Thayngen-Weier im Rahmen der Pfyn Kultur. Monographien zur Ur- und Frühgeschichte der Schweiz* 18. Basel.

Wotzka 1993

Wotzka, H. P. 1993. Zum traditionellen Kulturbegriff in der prähistorischen Archäologie. *Paideuma* 39: 25–44.

Wotzka 1997

Wotzka, H. P. 1997. *Keramikformen und –funktionen: Wider die systematische Trivialisierung kulturspezifischer Zusammenhänge. Forum II: Kommentare zu Heiko Reimer. Archäologische Informationen* 10/1: 117–131.

Wotzka 2000

Wotzka, H. P. 2000. „Kultur“ in der deutschsprachigen Urgeschichtsforschung. In: Fröhlich, S. (ed.) *Kultur – Ein interdisziplinäres Kolloquium zur Begrifflichkeit.* Halle (Saale) (D) 18. –21. Februar 1999. Halle: 55–80.

Wyss 1983

Wyss et al. 1983. *Die Jungsteinzeitlichen Bauerndörfer von Egolzwil 4 im Wauwilermoos. Band 1–2: Die Funde.* Zürich.

Zimmermann 1997

Zimmermann, A. 1997. Zur Anwendung der Korrespondenzanalyse in der Archäologie. In: Müller, J., Zimmermann, A.: *Archäologie und Korrespondenzanalyse – Beispiele, Fragen, Perspektiven.* *Internationale Archäologie* 23: 9–15.

The Bern Working Papers on Prehistoric Archaeology (ISSN 2297-8607) is an online series dedicated to innovative research ideas and research findings on prehistoric societies. Focussing on inter- and transdisciplinary methodologies, the series is seeking to enrich discussion and collaboration between scholars of different disciplines and institutions in countries around Europe. The working papers form part of research groups based at the division of Prehistory, Institute of Archaeology (University of Bern). Papers in the English or the German language from other research groups are also welcome.

Submission of proposals to caroline.heizt@iaw.unibe.ch

Die Berner Arbeitspapiere zur Prähistorischen Alpinarchäologie (ISSN 2297-8607) sind eine Online-Schriftenreihe, die innovativen Forschungsansätzen zu prähistorischen Gesellschaften gewidmet ist. Im Focus stehen inter- und transdisziplinäre methodologische Ansätze. Die Serie soll Austausch und Zusammenarbeit von Forschenden aus unterschiedlichen Disziplinen und Institutionen fördern, die in verschiedenen Ländern tätig sind. Die Arbeitspapiere sind Teil der Forschungsgruppen, welche bei der Abteilung für Prähistorische Archäologie am Institut für Archäologische Wissenschaften (Universität Bern) angesiedelt sind. Beiträge in Deutscher oder Englischer Sprache von anderen Forschungsgruppen sind ebenfalls willkommen.

Einreichung von Beitragsvorschlägen bei
caroline.heizt@iaw.unibe.ch