



Identification of candidate Parkinson disease genes by integrating genome-wide association study, expression, and epigenetic data sets

Article

Published Version

Creative Commons: Attribution 4.0 (CC-BY)

Open Access

Kia, D. A., Zhang, D., Guelfi, S., Manzoni, C., Hubbard, L., Reynolds, R. H., Botía, J., Ryten, M., Ferrari, R., Lewis, P. A., Williams, N., Trabzuni, D., Hardy, J., Wood, N. W., Noyce, A. J., Kaiyrzhanov, R., Middlehurst, B., Kia, D. A., Tan, M., Houlden, H., Morris, H. R., Plun-Favreau, H., Holmans, P., Hardy, J., Trabzuni, D., Bras, J., PhD, J. Q., Mok, K. Y., Kinghorn, K. J., Billingsley, K., Wood, N. W., Lewis, P., Schreglmann, S., Guerreiro, R., Lovering, R., R'Bibo, L., Manzoni, C., Rizig, M., Ryten, M., Guelfi, S., Escott-Price, V., Chelban, V., Foltynie, T., Williams, N., Brice, A., Danjou, F., Lesage, S., Corvol, J.-C., Martinez, M., Schulte, C., Brockmann, K., Simón-Sánchez, J., Heutink, P., Rizzu, P., Sharma, M., Gasser, T., Nicolas, A., Cookson, M. R., Bandres-Ciga, S., Blauwendraat, C., Craig, D. W., Faghri, F., Gibbs, J. R., Hernandez, D. G., Van Keuren-Jensen, K., Shulman, J. M., Leonard, H. L., Nalls, M. A., Robak, L., Lubbe, S., Finkbeiner,

S., Mencacci, N. E., Lungu, C., Singleton, A. B., Scholz, S. W., Reed, X., Alcalay, R. N., Gan-Or, Z., Rouleau, G. A., Krohn, L., van Hilten, J. J., Marinus, J., Adarmes-Gómez, A. D., Aguilar, M., Alvarez, I., Alvarez, V., Javier Barrero, F., Bergareche Yarza, J. A., Bernal-Bernal, I., Blazquez, M., Bonilla-Toribio, M., Botía, J. A., Boungiorno, M. T., Buiza-Rueda, D., Càmara, A., Carrillo, F., Carrión-Claro, M., Cerdan, D., Clarimón, J., Compta, Y., Diez-Fairen, M., Dols-Icardo, O., Duarte, J., Duran, R., Escamilla-Sevilla, F., Ezquerra, M., Feliz, C., Fernández, M., Fernández-Santiago, R., Garcia, C., García-Ruiz, P., Gómez-Garre, P., Gomez Heredia, M. J., Gonzalez-Aramburu, I., Pagola, A. G., Hoenicka, J., Infante, J., Jimenez-Escrig, A., Kulisevsky, J., Labrador-Espinosa, M. A., Lopez-Sendon, J. L., Arregui, A. L. d. M., Macias, D., Torres, I. M., Marín, J., Marti, M. J., Martínez-Castrillo, J. C., Mèndez-del-Barrio, C., González, M. M., Adolfo Mínguez, M. M., Mir, P., Rezola, E. M., Muñoz, E., Pagonabarraga, J., Pastor, P., Errazquin, F. P., Perinán-Tocino, T., Ruiz-Martínez, J., Ruz, C., Rodriguez, A. S., Sierra, M., Suarez-Sanmartin, E., Taberner, C., Tartari, J. P., Tejera-Parrado, C., Tolosa, E., Valdeoriola, F., Vargas-González, L., Vela, L., Vives, F., Zimprich, A., Pihlstrom, L., Toft, M., Koks, S., Taba, P., Hassin-Baer, S., Weale, M., Ramasamy, A., Smith, C., Guelfi, M. S., D'sa, K., Forabosco, P. and Botiá, J. A. (2021) Identification of candidate Parkinson disease genes by integrating genome-wide association study, expression, and epigenetic data sets. *JAMA Neurology*, 78 (4). pp. 464-472. ISSN 2168-6149 doi: <https://doi.org/10.1001/jamaneurol.2020.5257> Available at <http://centaur.reading.ac.uk/96176/>

It is advisable to refer to the publisher's version if you intend to cite from the work. See [Guidance on citing](#).

To link to this article DOI: <http://dx.doi.org/10.1001/jamaneurol.2020.5257>

Publisher: American Medical Association

All outputs in CentAUR are protected by Intellectual Property Rights law, including copyright law. Copyright and IPR is retained by the creators or other copyright holders. Terms and conditions for use of this material are defined in the [End User Agreement](#).

www.reading.ac.uk/centaur

CentAUR

Central Archive at the University of Reading

Reading's research outputs online

Identification of Candidate Parkinson Disease Genes by Integrating Genome-Wide Association Study, Expression, and Epigenetic Data Sets

Demis A. Kia, MBBS; David Zhang, MSc; Sebastian Guelfi, PhD; Claudia Manzoni, PhD; Leon Hubbard, PhD; Regina H. Reynolds, MSc; Juan Botía, PhD; Mina Ryten, MD; Raffaele Ferrari, PhD; Patrick A. Lewis, PhD; Nigel Williams, PhD; Daniah Trabzuni, PhD; John Hardy, PhD; Nicholas W. Wood, PhD; for the United Kingdom Brain Expression Consortium (UKBEC) and the International Parkinson's Disease Genomics Consortium (IPDGC)

 Supplemental content

IMPORTANCE Substantial genome-wide association study (GWAS) work in Parkinson disease (PD) has led to the discovery of an increasing number of loci shown reliably to be associated with increased risk of disease. Improved understanding of the underlying genes and mechanisms at these loci will be key to understanding the pathogenesis of PD.

OBJECTIVE To investigate what genes and genomic processes underlie the risk of sporadic PD.

DESIGN AND SETTING This genetic association study used the bioinformatic tools Coloc and transcriptome-wide association study (TWAS) to integrate PD case-control GWAS data published in 2017 with expression data (from Braineac, the Genotype-Tissue Expression [GTEx], and CommonMind) and methylation data (derived from UK Parkinson brain samples) to uncover putative gene expression and splicing mechanisms associated with PD GWAS signals. Candidate genes were further characterized using cell-type specificity, weighted gene coexpression networks, and weighted protein-protein interaction networks.

MAIN OUTCOMES AND MEASURES It was hypothesized a priori that some genes underlying PD loci would alter PD risk through changes to expression, splicing, or methylation. Candidate genes are presented whose change in expression, splicing, or methylation are associated with risk of PD as well as the functional pathways and cell types in which these genes have an important role.

RESULTS Gene-level analysis of expression revealed 5 genes (*WDR6* [OMIM 606031], *CD38* [OMIM 107270], *GPNMB* [OMIM 604368], *RAB29* [OMIM 603949], and *TMEM163* [OMIM 618978]) that replicated using both Coloc and TWAS analyses in both the GTEx and Braineac expression data sets. A further 6 genes (*ZRANB3* [OMIM 615655], *PCGF3* [OMIM 617543], *NEK1* [OMIM 604588], *NUPL2* [NCBI 11097], *GALC* [OMIM 606890], and *CTSB* [OMIM 116810]) showed evidence of disease-associated splicing effects. Cell-type specificity analysis revealed that gene expression was overall more prevalent in glial cell types compared with neurons. The weighted gene coexpression performed on the GTEx data set showed that *NUPL2* is a key gene in 3 modules implicated in catabolic processes associated with protein ubiquitination and in the ubiquitin-dependent protein catabolic process in the nucleus accumbens, caudate, and putamen. *TMEM163* and *ZRANB3* were both important in modules in the frontal cortex and caudate, respectively, indicating regulation of signaling and cell communication. Protein interactor analysis and simulations using random networks demonstrated that the candidate genes interact significantly more with known mendelian PD and parkinsonism proteins than would be expected by chance.

CONCLUSIONS AND RELEVANCE Together, these results suggest that several candidate genes and pathways are associated with the findings observed in PD GWAS studies.

Author Affiliations: Author affiliations are listed at the end of this article.

Group Information: The complete list of the International Parkinson's Disease Genomics Consortium (IPDGC) and United Kingdom Brain Expression Consortium (UKBEC) members is listed at the end of this article.

Corresponding Authors: Nicholas W. Wood, PhD, Institute of Neurology, Department of Molecular Neuroscience, University College London, Queen Square, London WC1N 3BG, United Kingdom (n.wood@ucl.ac.uk); John Hardy, PhD, UCL Queen Square Institute of Neurology, Department of Neurodegenerative Disease and Reta Lila Weston Laboratories, UCL Dementia Research Institute, Wing 1.2, Cruciform Building, Gower Street, London WC1E 6BT, United Kingdom (j.hardy@ucl.ac.uk).

JAMA Neurol. 2021;78(4):464-472. doi:10.1001/jamaneurol.2020.5257
Published online February 1, 2021.

Parkinson disease (PD) is the second most common neurodegenerative condition worldwide, characterized by bradykinesia, rigidity, and tremor.¹ Genome-wide association studies (GWAS) have discovered more than 40 loci significantly associated with PD risk.² However, these studies are limited to narrowing PD risk down to a genomic region encompassing several candidate genes. The causal genes underlying each locus, as well as the mechanism by which they confer PD risk, often remain unclear. These issues can be resolved by complementing GWAS data with quantitative trait loci (QTL) data sets, which describe associations of an individual's genotype with gene expression (eQTLs), splicing or methylation. For example, such efforts applied to the 7p15.3 locus have shown that PD risk variants regulate *GPNMB* (OMIM 604368) expression.³ Improvements to the understanding of the genes and mechanisms via which GWAS risk variants act may be instrumental to our understanding of the pathogenesis of PD.

Several studies demonstrate that GWAS risk variants may have an association with gene expression or splicing.^{4,5} In recent years, there has been an increase in the number of publicly available brain-derived QTL data sets, including those released by the UK Brain Expression Consortium and the Genotype-Tissue Expression (GTEx) Consortium used in this study.⁶⁻⁸ The progressively increasing sample size, sequencing depth, and tissue resolution of these data sets improves our power to detect QTLs and, as a result, to interpret GWAS results in the context of regulatory effects.^{9,10} This improved resource availability has been accompanied by advances in statistical tools that permit the systematic, genome-wide integration of QTL and GWAS data. Because different methods have different limitations and assumptions, we adopted a stringent approach of applying the tools Coloc and transcriptome-wide association study (TWAS), then retaining only significant results present from both methods to reduce the likelihood of false-positive results. Coloc is a method that uses a bayesian framework to calculate a probability that 2 traits share a causal variant, whereas TWAS uses prediction models trained on reference QTL data to assess the association between gene expression and disease.¹¹⁻¹³ The increased size and comprehensiveness of publicly available brain QTL data sets, coupled with advancements in bioinformatic tools, allow for a more thorough investigation of which of the putative genes suggested by GWAS underlie PD risk.

We present a systematic interrogation of all known PD risk loci using a recent PD GWAS, the aforementioned data sets, and methods to uncover the genes and mechanisms through which GWAS risk variants are associated with PD risk. The candidate genes and resulting pathways presented in this study are the result of stringent replication across multiple data sets and bioinformatic methods. We anticipate that this work can serve as a reference example to be applied to different neurodegenerative diseases.

Methods

PD GWAS Data

Summary statistics from the combined discovery and replication phases of a GWAS meta-analysis of PD were used,² in-

Key Points

Question What genes and genomic processes underlie risk of sporadic Parkinson disease?

Findings This genetic association study integrated Parkinson disease genome-wide association study data and brain-derived gene regulation data using various complementary bioinformatic tools and identified 11 candidate genes with evidence of disease-associated regulatory changes. Coexpression and protein level analyses of these genes demonstrated a significant functional association with known mendelian Parkinson disease genes.

Meaning This study suggests that gene regulation data may be used to identify candidate genes and pathways involved in sporadic Parkinson disease.

cluding 8 055 803 genotyped and imputed variants in up to 26 035 patients with PD and 403 190 controls of European ancestry. For the purposes of this study, all alleles were aligned on the forward strand, and all effect sizes and allele frequencies were converted with respect to the nonreference allele in build GRCh37. All genes overlapping the region 1 Mb upstream or downstream of a single-nucleotide variation (SNV) with an association with PD of $P \leq 5 \times 10^{-8}$ were selected for the initial analysis. The analysis was then extended to include all genes in the genome, to identify candidate genes in loci that have not reached genome-wide significance in the PD GWAS but where the collective evidence with expression data suggests a colocalized signal.

Braineac eQTL Data

The UK Brain Expression Consortium Braineac data set contains data from 10 brain regions obtained from 134 control individuals: frontal cortex, temporal cortex, occipital cortex, hippocampus, thalamus, putamen, substantia nigra, medulla, cerebellum, and white matter, together with the mean expression across all 10 regions.^{6,8,14} Gene expression was quantified using Affymetrix Exon 1.0 ST arrays (Thermo Fisher Scientific), and the genotyping was performed using Illumina Infinium Human Omni1-Quad BeadChip microarrays (Illumina Inc), then imputed to the European panel of the phase 1 1000 Genomes Project.^{15,16} The genotyped and imputed data were restricted to approximately 5.88 million SNVs with minor allele frequency of 0.05 or more and imputation $r^2 > 0.5$. For each gene of interest, all SNV associations within 1 Mb upstream and downstream of the gene were collected.¹⁷

GTEx eQTL Data

The GTEx version 7 data set includes eQTL data from 13 brain tissues with sample sizes ranging from 154 to 80: cerebellum, caudate, cortex, nucleus accumbens, cerebellar hemisphere, frontal cortex, putamen, hippocampus, anterior cingulate cortex, hypothalamus, amygdala, spinal cord (cervical C1), and substantia nigra.⁷ Gene expression in these samples has been obtained using paired-end RNA-seq (Illumina TruSeq; Illumina Inc) and genotype data from whole-genome sequencing. Full-summary eQTL data for the tissues of interest were downloaded from the GTEx web portal.¹⁸

Brain Methylation Data

Genome-wide methylation profiles were obtained from both the substantia nigra and the frontal cortex of 134 individuals with PD from the Parkinson Disease UK Brain Bank, using the Illumina Infinium HumanMethylation450 BeadChip (Illumina Inc). *Cis* PD methylation quantitative trait loci were defined as correlations between the target PD SNV genotype and DNA methylation levels of CpG sites within a 500-kb window of the SNV base position. Linear models were fitted to test whether DNA methylation beta values for each CpG site were predicted by SNV genotypes. We included covariates for age at death, sex, population stratification, batch, and postmortem interval. We retained the strongest SNV-CpG pair at a 5% false discovery rate (FDR) to be used in downstream analyses. The CpG sites were mapped to genes if they were within 10 kb of the gene transcription start or end base position according to HG19 (human genome version 19) coordinates. In total, 37 460 CpG sites were included in the final analysis.

Coloc Analysis

To assess the probability of the same SNV being responsible for both changing PD risk and modulating the expression levels of a gene, we used the Coloc method.¹¹ Both the Braineac and GTEx eQTL data sets were harmonized with the PD GWAS data set to ensure that the regression coefficients were reported with respect to the nonreference alleles in build GRCh37 and that the variants overlapping with the PD GWAS data set were kept for analysis. Coloc uses estimated approximate Bayes factors from summary association data to compute posterior probabilities for the following 5 hypotheses: no shared causal variant in the region, there is a causal PD variant but no eQTL variant, there is a causal eQTL variant but no PD variant, both studies have a different causal variant within the analyzed region, and there is a shared causal variant within the analyzed region.

We used the default Coloc priors of $p_1 = 10^{-4}$, $p_2 = 10^{-4}$, and $p_{12} = 10^{-5}$, where p_1 is the probability that a given SNV is associated with PD, p_2 is the probability that a given SNV is a significant eQTL, and p_{12} is the probability that a given SNV is both a PD result and an eQTL.

For both the Braineac and GTEx data sets, we derived posterior probabilities (PPH0-4) for each gene and considered PPH4 of 0.75 or more as strong evidence for colocalization. For Braineac, we also looked at genes for which there is strong evidence of colocalization at the exon level for a given exon (exon PPH4 \geq 0.75), but evidence against colocalization for the whole gene (gene PPH3 > gene PPH4), to identify potential splicing events causing PD.

Transcriptome-Wide Association Study

To assess the degree to which changes in gene expression or splicing might be associated with PD case or control status, we performed a TWAS or methylation-wide association study (MWAS) using the method by Gusev et al.¹² Expression reference weights were obtained from the CommonMind Consortium dorsolateral prefrontal cortex RNA-seq and RNA-seq splicing data sets, which are based on 467 samples (209 individuals with schizophrenia, 206 controls, and 52 individuals with affective disorder), and methylation data from our PD brain meth-

ylation data set.¹⁹ For all genes (or isoforms for splicing analysis), TWAS and MWAS *P* values were obtained, and all genes and isoforms passing multiple testing correction at the FDR 0.05 level, genome-wide, were considered significant. Where multiple genes were implicated within a region, we performed further conditional analyses using Fusion¹² to identify whether there were single or joint TWAS and MWAS signals at each locus. Conditional analyses were performed independently across gene expression and methylation data sets.

Weighted Gene Coexpression Network Analysis

Weighted gene coexpression network analysis (WGCNA) with *k*-mean values was applied by Botía et al.²⁰ to transcriptomic data from GTEx and Braineac to generate coexpression modules.^{21,22} We assessed whether the candidate genes in this study were important in certain modules using the tool CoExpNets.²³ The GTEx- and Braineac-derived networks were used to assign each candidate gene to a cell type, while the GTEx networks alone were used to assess the functional pathways associated with each gene. In brief, each module is associated with a cell type based on the enrichment of cell-type-specific genes within the module. The enrichment is assessed by using the Fisher exact test to evaluate whether we can find an overlap between the module genes and the brain cell-type markers that is more significant than random chance. Each gene of interest is then assigned to a primary cell type based on its module membership, which is the correlation of the expression of our gene of interest with the first principal component of each module. This correlation is always between 0 and 1; we use module membership as a measure of how reliable the assignment is of each gene to its module.

Cell-Type Specificity Analysis

We investigated the cell-type-specific expression of the Coloc prioritized genes, using the immunopanning data from humans and mice, and coexpression analysis of the GTEx and Braineac data.^{15,16,24} From the immunopanning data, cell-type-specific enrichment values were obtained or calculated for each gene and for each cell type analyzed. Enrichment was calculated as expression prevalence by dividing the mean expression of the gene in one cell type by the mean expression across all other cell types. Each gene of interest was then assigned to a primary cell type of interest based on the highest cell-type-specific enrichment value observed.

Literature-Derived Protein Interactor Networks

We extracted and quality-controlled currently known protein interactors (PPIs) for the proteins (seeds) encoded by the genes prioritized in this article (Coloc protein network), using a previously described custom-weighted protein-protein interaction (WPPINA) pipeline (eAppendix in Supplement 1), and performed functional enrichment analysis on the relevant genes prioritized through the WPPINA.²⁵ For comparison, a similar network (mendelian protein network) was prepared for mendelian PD and parkinsonism genes (*SNCA* [OMIM 163890], *LRRK2* [OMIM 609007], *GBA* [OMIM 606463], *SMPDI* [OMIM 607608], *VPS35* [OMIM 601501], *DNAJC13* [OMIM 614334], *PINK1* [OMIM 608309], *PRKN* [OMIM 602544], *DJI* [OMIM 602533], *FBX07* [OMIM 605648], *SYNJ1* [OMIM 604297], *DNAJC6* [OMIM 608375], *WDR45* [OMIM

300526], *PLA2G6* [OMIM 603604], *ATP13A2* [OMIM 610513], *RAB39B* [OMIM 300774], *SPG11* [OMIM 610844], *PANK2* [OMIM 606157], *C19orf12* [OMIM 614297], and *PRKRA* [OMIM 603424]; eTable 1 in Supplement 2). The number of interactions between the Coloc protein network and the mendelian protein network were quantified. To assess the probability that the number of connections between the 2 networks was more than would be expected by chance, we performed random simulations with 1000 control networks characterized by the same number of seeds as the Coloc protein network. Control networks were built by using random combinations of seed genes sampled out of the pool of 118 genes characterized by evidence against colocalization in the Coloc analysis (PPH3 > 0.75).

Statistical Analysis

Data wrangling and analysis were performed using R, version 3.4.3 (R Foundation for Statistical Computing). Coloc analyses were performed using the Coloc package in R. Transcriptome-wide association study analyses were conducted using the TWAS software,²⁶ and WGCNA results were obtained using the R package.²³ Cell-type specificity was calculated using in-house R scripts detailed in the Methods. The WPPINA analysis was performed using R, with the results visualized using Cytoscape 3.5.0 software (Cytoscape Consortium) and functional enrichment using g:Profiler.²⁷ The code for analyses performed in this study is available online.²⁸

Results

Genes Associated With PD Risk Through Changes in Expression

First, to evaluate the scope of the analysis, we assessed the number of genes expressed to a detectable level in both the Braineac and GTEx data sets. We found that of 515 genes within 1 Mb of a significant PD risk variant, 470 were expressed to a detectable level and passed quality control in both data sets. Second, we applied Coloc and TWAS to test whether the regulation of the expression of these overlapping genes was associated with PD risk. When applying the Coloc method to these 470 genes, 9 in Braineac and 27 in GTEx showed strong evidence for colocalization (PPH4 ≥ 0.75) in at least 1 brain region. In the TWAS analysis, 61 genes were found to be significantly associated with PD risk at an FDR level of 0.05. Five genes (*WDR6* [OMIM 606031], *CD38* [OMIM 107270], *GPNMB* [OMIM 604368], *RAB29* [OMIM 603949], and *TMEM163* [OMIM 618978]; Table 1) replicated across the Coloc and TWAS results (eFigure 1A in Supplement 1). Example regional association plots for the genes with the highest PPH4 in Braineac (*RAB29*) and GTEx (*CD38* in putamen) are found in eFigure 2A and B in Supplement 1. Full details for all genes that showed strong evidence for colocalization in either Braineac or GTEx and were significant in the TWAS analysis are found in eTable 2 in Supplement 3 and eTable 3 in Supplement 4.

Genes Associated With PD Risk Through Changes in Splicing

To assess splicing changes, we used the Braineac data set, which had exon-level eQTL data. A total of 25 genes in Braineac had

Table 1. Gene-Based Results

Gene	Locus	Direction	Top PD SNV position
<i>WDR6</i>	<i>NCKIPSD</i> or <i>CDC71</i>	Negative	chr3:48748989
<i>CD38</i>	<i>FAM200B</i> or <i>CD38</i>	Negative	chr4:15737101
<i>GPNMB</i>	<i>KLHL7</i> , <i>NUPL2</i> , or <i>GPNMB</i>	Positive	chr7:23293746
<i>RAB29</i>	<i>NUCKS1</i> or <i>SLC41A1</i>	Positive	chr1:205723572
<i>TMEM163</i>	<i>TMEM163</i> or <i>CCNT2</i>	Positive	chr2:135539967

Abbreviations: PD, Parkinson disease; SNV, single-nucleotide variation.

strong evidence for colocalization for at least 1 exon in at least 1 brain region. For 15 genes there was evidence suggesting that the association is owing to an exon-level splicing event (exon PPH4 ≥ 0.75) rather than a gene-level expression effect (gene PPH3 > PPH4). In the TWAS analysis, 129 genes had evidence for splicing in at least 1 isoform at FDR 0.05 level. Of these, 40 were within 1 Mb of a PD-significant SNV. Six genes with a putative splicing effect in the Coloc analysis showed a significant splicing effect in the TWAS analysis (*ZRANB3* [OMIM 615655], *PCGF3* [OMIM 617543], *NEK1* [OMIM 604588], *NUPL2* [NCBI 11097], *GALC* [OMIM 606890], and *CTSB* [OMIM 116810]) (eFigure 1B in Supplement 1). We then assessed the eQTL *P* values of the top SNV suggested by Coloc for the associated exon and the gene as a whole, showing that, for these associations, the gene-level *P* value is not significant, while the exon-level *P* value is significant. These genes are summarized in Table 2. Full details for all splicing events that showed strong evidence for colocalization in Braineac, and of all genes significant at FDR 0.05 level in the TWAS analysis are found in eTable 4 in Supplement 5 and eTable 5 in Supplement 6.

Genes Associated With PD Risk Through Changes in Methylation

We investigated whether the genes associated with PD risk via expression or splicing changes could be acting through regulation of methylation. A total of 134 CpG sites passed FDR correction and conditional analysis in the substantia nigra (mapping to 107 unique genes), and 116 CpG sites survived FDR correction and conditional analysis in substantia nigra (mapping to 93 unique genes) (eTable 6 in Supplement 7). Of the MWAS significant genes, 3 (*GPNMB*, *TMEM163*, and *CTSB*) overlapped with the Coloc expression or splicing results (Table 3).

Cell-Type Specificity and WGCNA

The results for the cell-type specificity analysis are shown in Figure 1. Although no single cell type dominated, Coloc-prioritized gene expression was overall more prevalent in glial cell types compared with neurons. This finding was consistent across analyses performed with mouse immunopanning data generated from the cortex and with human immunopanning data generated using cortical tissue and using inferred cell-specific gene expression generated using coexpression networks across all brain regions, including the substantia nigra. The WGCNA results are summarized in Figure 1B; *NUPL2*, *TMEM163*, and *ZRANB3* were the most relevant genes (module membership > 0.76) within 3 modules in different brain regions. *NUPL2* was a key gene within the dark turquoise module in the nucleus

Table 2. Splicing Results

Gene	PPH3	PPH4	Top Coloc SNV	P value			
				Exon	Gene	PPH3	PPH4
ZRANB3	0.06	0.93	rs6741007	1.37×10^{-6}	.27	0.20	0.07
PCGF3	0.05	0.87	rs34311866	3.32×10^{-5}	.20	0.26	0.07
NEK1	0.11	0.78	rs6828248	7.13×10^{-5}	.11	0.28	0.08
NUPL2	0.24	0.76	rs12539467	8.62×10^{-9}	.06	0.26	0.17
GALC	0.12	0.81	rs2008686	7.7×10^{-5}	.03	0.27	0.19
CTSB	0.10	0.78	rs1692821	3.14×10^{-5}	.47	0.27	0.05
CTSB	0.09	0.77	rs1293298	3.66×10^{-5}	.08	0.27	0.07

Abbreviations: PPH, posterior probabilities; SNV, single-nucleotide variation.

Table 3. MWAS Results Overlapping With Coloc Hits

Gene	CpG site	Direction
GPNMB	cg17274742	Negative
GPNMB	cg08455073	Negative
TMEM163	cg00897703	Positive
CTSB	cg07593977	Negative

Abbreviation: MWAS, methylation-wide association study.

accumbens, the blue module in the caudate, and the sky blue module in the putamen. These modules' most relevant functions indicated catabolic processes associated with protein ubiquitination (protein ubiquitination [gene ontology (GO): 0016567]; ubiquitin-dependent protein catabolic process [GO: 0006511]). *TMEM163* and *ZRANB3* were both important in the turquoise module in the frontal cortex and caudate, respectively. This module indicated chemical transmission at the synapse as a major associated function (regulation of signaling [GO: 0023051]; cell communication [GO: 0007154]).

Literature-Derived PPI Network

The protein products of the 11 candidate genes were interconnected (principally through a second-degree level of connection) with several proteins that are also relevant for mendelian forms of PD and parkinsonism (Figure 2A). The number of connections to known PD and parkinsonism genes ($n = 9$) was significantly higher than expected by chance ($P < 1 \times 10^{-3}$) based on a random simulation of 1000 control networks (Figure 2B). This result suggests a disease-specific and consistent interaction between protein products of our candidate genes and mendelian PD and parkinsonism genes.

Because proteins that interact together are likely to share similar functions, we investigated whether there were shared pathways and biological processes associated with the core composed of our candidate genes and mendelian genes (input list for enrichment in eTable 7 in Supplement 8). These results suggest that there is an enrichment of proteins involved in or regulating the ERBB receptor tyrosine protein kinase signaling pathways (Figure 2C; eTable 8 in Supplement 9).

Discussion

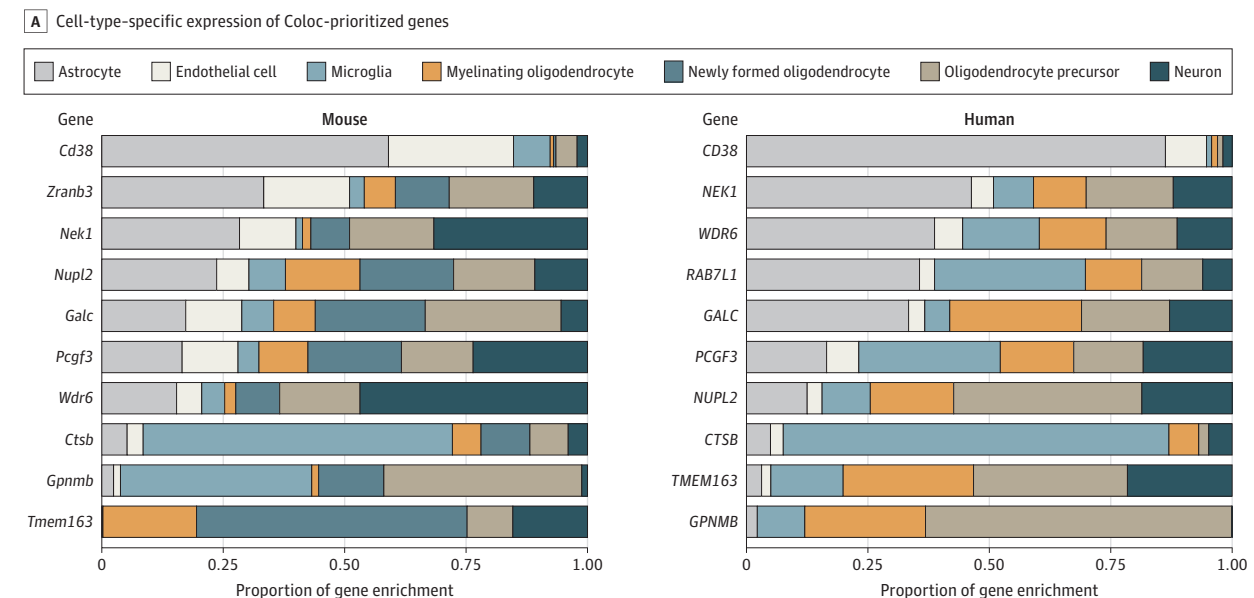
With the increasing number of GWASs, our ability to map disease-associated variants exceeds our ability to interpret their

biological function. Here, we have performed a comprehensive analysis by colocalization of eQTL and GWAS signals in PD, using a recent PD GWAS. We have integrated these data with publicly available brain eQTL data sets (Braineac and GTEx). This multilayered approach has identified 11 genes that we postulate underlie PD risk. Of these, 5 are associated with gene expression regulation, and 6 are associated with alternative splicing. We found evidence of methylation regulation for 3 of these candidate genes.

Of the candidate genes presented here, *CD38* is associated with insulin regulation, emphasizing a possible role of glucose metabolism in PD.²⁹ This finding is supported by recent work indicating an association between body mass index and PD, and a randomized clinical trial of exenatide, a glucagon-like peptide 1 receptor agonist, as a disease-modifying agent for PD.^{30,31} Furthermore, a role for *CD38* in regulating neuroinflammation, especially in glial cells, has been proposed, which is consistent with the enrichment of *CD38* in astrocytes in the cell-type specificity analysis.³² The data from this study also reinforce *RAB29* as a key candidate for the chromosome 1q32 locus association. Recent studies providing further functional evidence linking *RAB29* (also known as *RAB7L1*) to *LRRK2*, and implicating *RAB29* as a substrate for *LRRK2* kinase activity, also support this designation.³³⁻³⁵ Furthermore, the candidate genes *CTSB* and *GALC*, whose dysfunction is linked to lysosomal storage disorders such as Krabbe disease, are consistent with the findings on the role of lysosomal pathways in PD.³⁶⁻³⁸ In the *GPNMB/NUPL2* locus, the PD GWAS results suggest only 1 independent signal, while the results presented in this article nominate both *GPNMB* (gene level) and *NUPL2* (splicing) with strong PPI evidence connecting both to mendelian or sporadic risk genes. This could be explained by the true causal gene being 1 of the 2, a single mechanism mediated through the associations with both genes, or potentially yet undetected independent PD GWAS signals at the locus associated with independent risk genes.

The WGCNA and WPPINA approaches allow prioritization of genes as a global functional unit. The WGCNA analysis suggested that 3 of the Coloc-prioritized genes (*NUPL2*, *TMEM163*, and *ZRANB3*) may be relevant for supporting functions associated with the ubiquitin proteasome system, neuronal development, and the chemical transmission at the synapse. The WPPINA analysis indicated that the proteins encoded by the Coloc-prioritized genes interact with mendelian PD and parkinsonism proteins, suggesting the existence of a common functional unit of genes and proteins—associated with

Figure 1. Cell-Type-Specific Expression of Coloc-Prioritized Genes in Human and Mouse, and Using Genotype-Tissue Expression (GTEx) Consortium and United Kingdom Brain Expression Consortium (UKBEC) Data



B GTEx and Braineac data

Gene	Substantia nigra		Putamen		Frontal cortex	
	GTEx	UKBEC	GTEx	UKBEC	GTEx	UKBEC
CD38 (<i>Cd38</i>)	Astrocyte	Astrocyte	Astrocyte	Astrocyte	Astrocyte	Astrocyte
CTSB (<i>Ctsb</i>)	Microglia	Astrocyte	Void	Astrocyte	Void	Neuron
GALC (<i>Galc</i>)	Void	Oligodendrocyte	Oligoendrocyte	Astrocyte	Void	Oligodendrocyte
GPNBM (<i>Gpnbm</i>)	Microglia	Microglia	Microglia	Astrocyte	Microglia or astrocyte	Microglia
NEK1 (<i>Nek1</i>)	Astrocyte	Oligodendrocyte	Astrocyte	Astrocyte	Void	Oligodendrocyte
NUPL2 (<i>Nupl2</i>)	Void	Oligodendrocyte	Neuron	Astrocyte	Void	Neuron
PCGF3 (<i>Pcgf3</i>)	Void	Neuron	Void	Neuron	Void	Neuron
RAB7L1 (<i>na</i>)	Neuron	Astrocyte	Microglia	Astrocyte	Astrocyte or microglia	Astrocyte
TMEM163 (<i>Tmem163</i>)	Neuron	Void	Neuron	NA	Neuron	NA
WDR6 (<i>Wdr6</i>)	Void	Oligodendrocyte	Void	Void	Void	Astrocyte
ZRANB3 (<i>Zranb3</i>)	Void	Neuron	Neuron	Neuron	Void	Neuron

These results illustrate the overrepresentation of glial cell types compared with neuronal cell types among the candidate genes. NA indicates not applicable.

the ERBB signaling pathways—that increases the risk for developing sporadic as well as familial PD.

Limitations and Strengths

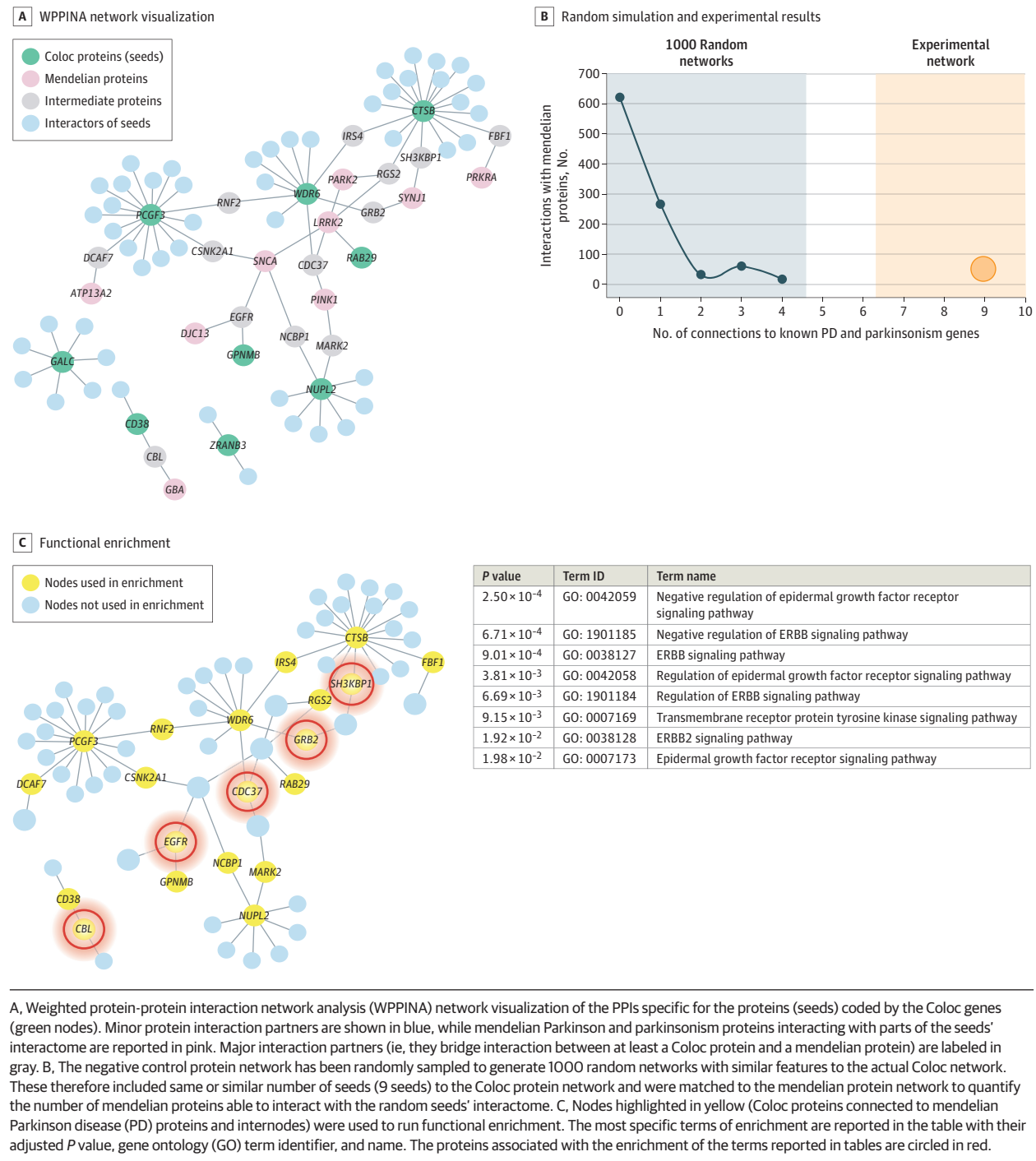
This study has some limitations. It considered only *cis*-QTLs, owing to the current challenges in robustly quantifying *trans*-QTLs. Furthermore, this study considered only QTLs in the brain and no other tissues. The Coloc analysis applied here assumes that the true causal variant underlying the disease has been captured in both the GWAS and eQTL data sets. The PD GWAS data used here have been imputed to the latest Haplotype Reference Consortium panel (version 1.1), and the genotypes in the GTEx data are generated with whole-genome sequencing, maximizing the chances of this assumption being met. However, the Braineac data used here have been imputed to 1000 Genomes phase 1, potentially reducing our power to replicate candidate genes in this data set. Another limitation in the colocalization tools used here is that they assume 1 independent signal for each gene at each locus for both the GWAS and QTL results. Finally,

the methods used here cannot exclude pleiotropy, whereby a disease-causing SNV is associated with the regulation of an unrelated gene via a separate pathway.

Although the high degree of overlap between the GTEx and Braineac-derived results is encouraging, there were some inconsistencies in the implicated brain regions across the 2 data sets. This may be due to potential methodological differences in tissue collection, RNA extraction, platforms, and analysis pipelines. In addition, these differences might reflect divergent cell-type specificity of the expression and splicing effects.

This study also has some strengths. A key strength is that this is a large and comprehensive exploration of PD GWAS and eQTL data sets from the human brain. We replicated our Coloc results across 2 platforms, Braineac and GTEx, generated through microarray and RNA-seq, respectively, and performed additional validation using TWAS in the CommonMind Consortium dorsolateral prefrontal cortex data set. This has resulted in prioritizing 11 candidate causal genes for PD

Figure 2. Literature-Derived Protein-Protein Interaction (PPI) Network



based on GWAS results to be further investigated biologically in different animal or cell models for PD. Furthermore, we are highlighting biological reasons for their likely functional association with PD pathogenesis. We acknowledge that further functional work will be required to mechanistically link these genes to PD, but the genetic and analytical approaches applied here suggest that these are the putative gene and genomic events underlying these risk loci.

Conclusions

This study pairs GWAS with QTL data to discover candidate genes whose change in expression, splicing, or methylation are associated with the risk of PD. Furthermore, interaction network analyses highlight the functional pathways and cell types in which these candidate genes have an important role.

ARTICLE INFORMATION**Accepted for Publication:** September 11, 2020.**Published Online:** February 1, 2021.

doi:10.1001/jamaneurol.2020.5257

Open Access: This is an open access article distributed under the terms of the [CC-BY License](#). © 2021 Kia DA et al. *JAMA Neurology*.**Author Affiliations:** Department of Molecular Neuroscience, University College London Institute of Neurology, Queen Square, London, United Kingdom (Kia, Zhang, Guelfi, Reynolds, Ryten, Ferrari, Trabzuni, Wood); Department of Pharmacology, School of Pharmacy, University College London, London, United Kingdom (Manzoni); Division of Psychological Medicine and Clinical Neurosciences, School of Medicine, University of Cardiff, Cardiff, United Kingdom (Hubbard, Williams); Departamento de Ingeniería de la Información y las Comunicaciones, Universidad de Murcia, Murcia, Spain (Botía); Department of Comparative Biomedical Sciences, The Royal Veterinary College, London, United Kingdom (Lewis); School of Pharmacy, University of Reading, Reading, United Kingdom (Lewis); Department of Genetics, King Faisal Specialist Hospital and Research Centre, Riyadh, Saudi Arabia (Trabzuni); Department of Neurodegenerative Disease and Reta Lila Weston Laboratories, University College London Dementia Research Institute, London, United Kingdom (Hardy).**Author Contributions:** Messrs Kia and Zhang had full access to all of the data in the study and take responsibility for the integrity of the data and the accuracy of the data analysis. Messrs Kia and Zhang contributed equally to this work. Drs Hardy and Wood contributed equally to this work.**Concept and design:** Kia, Zhang, Lewis, Trabzuni, Hardy, Wood.**Acquisition, analysis, or interpretation of data:** Kia, Zhang, Guelfi, Manzoni, Hubbard, Reynolds, Botía, Ryten, Ferrari, Lewis, Williams, Wood.**Drafting of the manuscript:** Kia, Zhang, Ryten, Lewis, Williams, Trabzuni, Hardy.**Critical revision of the manuscript for important intellectual content:** Kia, Zhang, Guelfi, Manzoni, Hubbard, Reynolds, Botía, Ferrari, Lewis, Williams, Wood.**Statistical analysis:** Kia, Zhang, Manzoni, Reynolds, Botía, Ryten, Ferrari, Williams.**Obtained funding:** Lewis, Williams, Hardy, Wood.**Administrative, technical, or material support:** Kia, Zhang, Guelfi, Manzoni, Ryten.**Supervision:** Kia, Lewis, Williams, Hardy, Wood.**Conflict of Interest Disclosures:** Dr Manzoni and Dr Lewis reported receiving grants from Medical Research Council (MRC) during the conduct of the study. Dr Williams reported receiving grants from Parkinson's UK during the conduct of the study. Dr Trabzuni reported receiving personal fees from King Faisal Specialist Hospital during the conduct of the study; and grants from University College London outside the submitted work. No other disclosures were reported.**Funding/Support:** This study was supported by the Medical Research Council and Wellcome Trust Disease Centre (grant WT089698/Z/09/Z to Drs Wood and Hardy). Funding for the project was provided by the Wellcome Trust under awards 076113, 085475, and 090355. This study was alsosupported by Parkinson's UK (grants 8047 and J-0804) and the MRC (G0700943 and G1100643). This work was supported by the MRC grant MR/N026004/1. The Brainiac project was supported by the MRC through the MRC Sudden Death Brain Bank Grant (MR/G0901254) to Dr Hardy. Dr Lewis was supported by grants MR/N026004/1 and MR/L010933/1 from the MRC and the Michael J. Fox Foundation for Parkinson's Research. Dr Trabzuni was supported by the King Faisal Specialist Hospital and Research Centre and the Michael J. Fox Foundation for Parkinson's Research. Dr Hardy was supported by the Dolby Foundation. Dr Ferrari is supported by grant 284 from the Alzheimer's Society. University College London Hospitals and University College London receive support from the Department of Health's National Institute for Health Research (NIHR) Biomedical Research Centres (BRC). Dr Wood is an NIHR senior investigator and receives support from the JPND-MRC Comprehensive Unbiased Risk Factor Assessment for Genetics and Environment in Parkinson's disease (COURAGE). Ms Reynolds is supported through the award of a Leonard Wolfson Doctoral Training Fellowship in Neurodegeneration. This work was supported in part by the Intramural Research Programs of the National Institute of Neurological Disorders and Stroke (NINDS), the National Institute on Aging (NIA), and the National Institute of Environmental Health Sciences, both part of the National Institutes of Health, Department of Health and Human Services; project numbers IZIA-NS003154, Z01-AG000949-02, and Z01-ES101986. In addition, this work was supported by the Department of Defense (award W81XWH-09-2-0128), and the Michael J. Fox Foundation for Parkinson's Research. This work was supported by National Institutes of Health grants ROINS037167, RO1CA141668, and P50NS071674; American Parkinson Disease Association (APDA); Barnes Jewish Hospital Foundation; Greater St Louis Chapter of the APDA. The KORA (Cooperative Research in the Region of Augsburg) research platform was started and financed by the Forschungszentrum für Umwelt und Gesundheit, which is funded by the German Federal Ministry of Education, Science, Research, and Technology and by the State of Bavaria. This study was also funded by the German Federal Ministry of Education and Research (BMBF) under the funding code O31A430A, the EU Joint Programme - Neurodegenerative Diseases Research (JPND) project under the aegis of JPND (www.jpnd.eu) through Germany, BMBF, funding code O1ED1406 and iMed - the Helmholtz Initiative on Personalized Medicine. This study is funded by the German National Foundation grant (DFG SH599/6-1), Michael J Fox Foundation, and MSA Coalition, USA. The French GWAS work was supported by the French National Agency of Research (ANR-08-MNP-012). This study was also funded by France-Parkinson Association, Fondation de France, the French program "Investissements d'avenir" funding (ANR-10-IAIHU-06) and a grant from Assistance Publique-Hôpitaux de Paris (PHRC, AOR-08010) for the French clinical data. This study was also sponsored by the Landspítali University Hospital Research Fund; Icelandic Research Council; and European Community Framework Programme 7, People Programme, and IAPP on novel genetic and phenotypic markers of Parkinson's disease and Essential Tremor (MarkMD), contract number

PIAP-GA-2008-230596 MarkMD. Institutional research funding IUT20-46 was received from the Estonian Ministry of Education and Research. The McGill study was funded by the Michael J. Fox Foundation and the Canadian Consortium on Neurodegeneration in Aging (CCNA). Sequencing and genotyping done in McGill University was supported by grants from the Michael J. Fox Foundation, the Canadian Consortium on Neurodegeneration in Aging (CCNA) and in part thanks to funding from the Canada First Research Excellence Fund (CFREF), awarded to McGill University for the Healthy Brains for Healthy Lives (HBHL) program.

Role of the Funder/Sponsor: The funding sources had no role in the design and conduct of the study; collection, management, analysis, and interpretation of the data; preparation, review, or approval of the manuscript; and decision to submit the manuscript for publication.**Group Information:** The International Parkinson's Disease Genomics Consortium (IPDGC) and United Kingdom Brain Expression Consortium (UKBEC) members are listed in [Supplement 10](#).**Additional Contributions:** We thank all the individuals who donated their time and biological samples to be a part of this study. We also thank all members of the International Parkinson's Disease Genomics Consortium (IPDGC). See <http://pdgenetics.org/partners> for a complete overview of members, acknowledgments, and funding. This study used the high-performance computational capabilities of the Biowulf Linux cluster at the National Institutes of Health, Bethesda, MD (<https://hpc.nih.gov/>), and DNA panels, samples, and clinical data from the National Institute of Neurological Disorders and Stroke Human Genetics Resource Center DNA and Cell Line Repository. People who contributed samples are acknowledged in descriptions of every panel on the repository website. We thank the French Parkinson's Disease Genetics Study Group and the Drug Interaction With Genes (DIGPD) study group: Y. Agid, M. Anheim, F. Artaud, A.-M. Bonnet, C. Bonnet, F. Bourdain, J.-P. Brandel, C. Brefel-Courbon, M. Borg, A. Brice, E. Broussolle, F. Cormier-Dequaire, J.-C. Corvol, P. Damier, B. Debilly, B. Degos, P. Derkinderen, A. Destée, A. Dürr, F. Durif, A. Elbaz, D. Grabli, A. Hartmann, S. Klebe, P. Krack, J. Kraemmer, S. Leder, S. Lesage, R. Levy, E. Lohmann, L. Lacomblez, G. Mangone, L.-L. Mariani, A.-R. Marques, M. Martinez, V. Mesnage, J. Muellner, F. Ory-Magne, F. Pico, V. Planté-Bordeneuve, P. Pollak, O. Rascol, K. Tahiri, F. Tison, C. Tranchant, E. Roze, M. Tir, M. Vérin, F. Viallet, M. Vidailhet, and A. You. We also thank the members of the French 3C Consortium: A. Alperovitch, C. Berr, C. Tzourio, and P. Amouyel for allowing us to use part of the 3C cohort, and D. Zelenika for support in generating the genome-wide molecular data. We thank P. Tienari, Molecular Neurology Programme, Biomedicum, University of Helsinki, T. Peuralinna, Department of Neurology, Helsinki University Central Hospital, L. Myllykangas, Folkhalsan Institute of Genetics and Department of Pathology, University of Helsinki, and R. Sulkava, Department of Public Health and General Practice Division of Geriatrics, University of Eastern Finland, for the Finnish controls (Vantaa85+ GWAS data). We used genome-wide association data generated by the Wellcome Trust Case-Control Consortium 2

(WTCCC2) from UK patients with Parkinson disease and UK control individuals from the 1958 Birth Cohort and National Blood Service. Genotyping of UK replication cases on ImmunoChip was part of the WTCCC2 project, which was funded by the Wellcome Trust (083948/Z/07/Z). UK population control data were made available through WTCCC1. As with previous IPDGC efforts, this study makes use of data generated by the Wellcome Trust Case-Control Consortium. A full list of the investigators who contributed to the generation of the data is available from www.wtccc.org.uk. We thank Jeffrey Barrett and Jason Downing, Illumina Inc, for assistance with the design of the ImmunoChip and NeuroX arrays. DNA extraction work that was done in the UK was undertaken at University College London Hospitals, University College London, who received a proportion of funding from the Department of Health's National Institute for Health Research Biomedical Research Centres funding. This study was supported in part by the Wellcome Trust/Medical Research Council Joint Call in Neurodegeneration award (WT089698) to the Parkinson's Disease Consortium (UKPDC), whose members are from the UCL Institute of Neurology, University of Sheffield, and the Medical Research Council Protein Phosphorylation Unit at the University of Dundee. We thank the Quebec Parkinson Network (<http://rpq-qpn.ca/en/>) and its members.

REFERENCES

- Lees AJ, Hardy J, Revesz T. Parkinson's disease. *Lancet*. 2009;373(9680):2055-2066. doi:10.1016/S0140-6736(09)60492-X
- Chang D, Nalls MA, Hallgrímsson IB, et al; International Parkinson's Disease Genomics Consortium; 23andMe Research Team. A meta-analysis of genome-wide association studies identifies 17 new Parkinson's disease risk loci. *Nat Genet*. 2017;49(10):1511-1516. doi:10.1038/ng.3955
- Murthy MN, Blauwendraat C, Guelfi S, Hardy J, Lewis PA, Trabzuni D; UKBEC; IPDGC. Increased brain expression of GPNMB is associated with genome wide significant risk for Parkinson's disease on chromosome 7p15.3. *Neurogenetics*. 2017;18(3):121-133. doi:10.1007/s10048-017-0514-8
- Emilsson V, Thorleifsson G, Zhang B, et al. Genetics of gene expression and its effect on disease. *Nature*. 2008;452(7186):423-428. doi:10.1038/nature06758
- Nica AC, Montgomery SB, Dimas AS, et al. Candidate causal regulatory effects by integration of expression QTLs with complex trait genetic associations. *PLoS Genet*. 2010;6(4):e1000895. doi:10.1371/journal.pgen.1000895
- Ramasamy A, Trabzuni D, Guelfi S, et al; UK Brain Expression Consortium; North American Brain Expression Consortium. Genetic variability in the regulation of gene expression in ten regions of the human brain. *Nat Neurosci*. 2014;17(10):1418-1428. doi:10.1038/nn.3801
- GTEX Consortium. Human genomics: the Genotype-Tissue Expression (GTEx) pilot analysis: multitissue gene regulation in humans. *Science*. 2015;348(6235):648-660. doi:10.1126/science.1262110
- Trabzuni D, Ryten M, Walker R, et al. Quality control parameters on a large dataset of regionally dissected human control brains for whole genome expression studies. *J Neurochem*. 2011;119(2):275-282. doi:10.1111/j.1471-4159.2011.07432.x
- Dobyn A, Huckins LM, Boocock J, et al; CommonMind Consortium. Landscape of conditional eQTL in dorsolateral prefrontal cortex and co-localization with schizophrenia GWAS. *Am J Hum Genet*. 2018;102(6):1169-1184. doi:10.1016/j.ajhg.2018.04.011
- Pardiñas AF, Holmans P, Pocklington AJ, et al; GERAD1 Consortium; CRESTAR Consortium. Common schizophrenia alleles are enriched in mutation-intolerant genes and in regions under strong background selection. *Nat Genet*. 2018;50(3):381-389. doi:10.1038/s41588-018-0059-2
- Giambartolomei C, Vukcevic D, Schadt EE, et al. Bayesian test for colocalisation between pairs of genetic association studies using summary statistics. *PLoS Genet*. 2014;10(5):e1004383. doi:10.1371/journal.pgen.1004383
- Gusev A, Ko A, Shi H, et al. Integrative approaches for large-scale transcriptome-wide association studies. *Nat Genet*. 2016;48(3):245-252. doi:10.1038/ng.3506
- Barbeira AN, Dickinson SP, Bonazzola R, et al; GTEx Consortium. Exploring the phenotypic consequences of tissue specific gene expression variation inferred from GWAS summary statistics. *Nat Commun*. 2018;9(1):1825. doi:10.1038/s41467-018-03621-1
- Trabzuni D, Ryten M, Emmett W, et al; International Parkinson Disease Genomics Consortium (IPDGC). Fine-mapping, gene expression and splicing analysis of the disease associated LRRK2 locus. *PLoS One*. 2013;8(8):e70724. doi:10.1371/journal.pone.0070724
- Zhang Y, Sloan SA, Clarke LE, et al. Purification and characterization of progenitor and mature human astrocytes reveals transcriptional and functional differences with mouse. *Neuron*. 2016;89(1):37-53. doi:10.1016/j.neuron.2015.11.013
- Soreq L, Rose J, Soreq E, et al; UK Brain Expression Consortium; North American Brain Expression Consortium. Major shifts in glial regional identity are a transcriptional hallmark of human brain aging. *Cell Rep*. 2017;18(2):557-570. doi:10.1016/j.celrep.2016.12.011
- Braineac. Braineac—the brain eQTL almanac. Accessed December 14, 2020. <http://www.braineac.org/>
- GTEx Portal. Explore GTEx. Accessed December 14, 2020. <https://www.gtexportal.org/home/>
- Senthil G, Dutka T, Bingaman L, Lehner T. Genomic resources for the study of neuropsychiatric disorders. *Mol Psychiatry*. 2017;22(12):1659-1663. doi:10.1038/mp.2017.29
- Botía JA, Vandrovcova J, Forabosco P, et al; United Kingdom Brain Expression Consortium. An additional k-means clustering step improves the biological features of WGCNA gene co-expression networks. *BMC Syst Biol*. 2017;11(1):47. doi:10.1186/s12918-017-0420-6
- Bettencourt C, Ryten M, Forabosco P, et al; United Kingdom Brain Expression Consortium. Insights from cerebellar transcriptomic analysis into the pathogenesis of ataxia. *JAMA Neurol*. 2014;71(7):831-839. doi:10.1001/jamaneurol.2014.756
- Forabosco P, Ramasamy A, Trabzuni D, et al. Insights into TREM2 biology by network analysis of human brain gene expression data. *Neurobiol Aging*. 2013;34(12):2699-2714. doi:10.1016/j.neurobiolaging.2013.05.001
- GitHub. CoExpNets. Accessed December 14, 2020. <https://github.com/juanbot/CoExpNets>
- Zhang Y, Chen K, Sloan SA, et al. An RNA-sequencing transcriptome and splicing database of glia, neurons, and vascular cells of the cerebral cortex. *J Neurosci*. 2014;34(36):11929-11947. doi:10.1523/JNEUROSCI.1860-14.2014
- Ferrari R, Lovering RC, Hardy J, Lewis PA, Manzoni C. Weighted protein interaction network analysis of frontotemporal dementia. *J Proteome Res*. 2017;16(2):999-1013. doi:10.1021/acs.jproteome.6b00934
- GitHub. fusion_twas. Accessed December 14, 2020. https://github.com/gusevlab/fusion_twas
- g-Profiler. Accessed December 14, 2020. <https://biit.cs.ut.ee/gprofiler/gost>
- GitHub. pd_gwas_qtl_2020. Accessed December 22, 2020. https://github.com/demiskia/pd_gwas_qtl_2020
- Okamoto H, Takasawa S, Nata K. The CD38-cyclic ADP-ribose signalling system in insulin secretion: molecular basis and clinical implications. *Diabetologia*. 1997;40(12):1485-1491. doi:10.1007/s001250050854
- Noyce AJ, Kia DA, Hemani G, et al; International Parkinson Disease Genomics Consortium. Estimating the causal influence of body mass index on risk of Parkinson disease: a mendelian randomisation study. *PLoS Med*. 2017;14(6):e1002314. doi:10.1371/journal.pmed.1002314
- Athauda D, Maclagan K, Skene SS, et al. Exenatide once weekly versus placebo in Parkinson's disease: a randomised, double-blind, placebo-controlled trial. *Lancet*. 2017;390(10103):1664-1675. doi:10.1016/S0140-6736(17)31585-4
- Kou W, Banerjee S, Eudy J, et al. CD38 regulation in activated astrocytes: implications for neuroinflammation and HIV-1 brain infection. *J Neurosci Res*. 2009;87(10):2326-2339. doi:10.1002/jnr.22060
- Purlyte E, Dhokne HS, Sarhan AR, et al. Rab29 activation of the Parkinson's disease-associated LRRK2 kinase. *EMBO J*. 2018;37(1):1-18. doi:10.15252/embj.201798099
- Fujimoto T, Kuwahara T, Eguchi T, Sakurai M, Komori T, Iwatsubo T. Parkinson's disease-associated mutant LRRK2 phosphorylates Rab7L1 and modifies trans-Golgi morphology. *Biochem Biophys Res Commun*. 2018;495(2):1708-1715. doi:10.1016/j.bbrc.2017.12.024
- Liu Z, Bryant N, Kumaran R, et al. LRRK2 phosphorylates membrane-bound Rabs and is activated by GTP-bound Rab7L1 to promote recruitment to the trans-Golgi network. *Hum Mol Genet*. 2018;27(2):385-395. doi:10.1093/hmg/ddx410
- Wenger DA, Rafi MA, Luzzi P. Krabbe disease: one hundred years from the bedside to the bench to the bedside. *J Neurosci Res*. 2016;94(11):982-989. doi:10.1002/jnr.23743
- Dehay B, Martinez-Vicente M, Caldwell GA, et al. Lysosomal impairment in Parkinson's disease. *Mov Disord*. 2013;28(6):725-732. doi:10.1002/mds.25462
- Robak LA, Jansen IE, van Rooij J, et al; International Parkinson's Disease Genomics Consortium (IPDGC). Excessive burden of lysosomal storage disorder gene variants in Parkinson's disease. *Brain*. 2017;140(12)(suppl):3191-3203. doi:10.1093/brain/awx285