

Elastic and Diffractive Scattering after AdS/CFT

Richard Brower¹, Marko Djurić², Chung-I Tan^{2*}

¹Physics Department, Boston University, Boston, MA 02215, USA.

²Physics Department, Brown University, Providence, RI 02912, USA.

At high energies, elastic hadronic cross sections are believed to be dominated by vacuum exchange. In leading order of the $1/N_c$ expansion, this exchange process has been identified as the BFKL *Pomeron* or its strong AdS dual, the closed string graviton [1]. However, the difference of particle anti-particle cross sections is given by a so-called *Odderon* carrying $C = -1$ quantum numbers identified in weak coupling with odd numbers of exchanged gluons. Here we show that the dual description associates this with the Neveu-Schwartz ($B_{\mu\nu}$) sector of closed string theory. We also discuss the extension of the strong coupling treatment to central diffractive Higgs production at LHC.

1 Introduction

The subject of near-forward high energy scattering for hadrons has a long history. The traditional description of high-energy small-angle scattering in QCD has two components — a soft Pomeron Regge pole associated with exchanging tensor glueballs, and a hard BFKL Pomeron at weak coupling. On the basis of gauge/string duality, a coherent treatment of the Pomeron was provided [1]. These results agree with expectations for the BFKL Pomeron at negative t , and with the expected glueball spectrum at positive t , but provide a framework in which they are unified [2]. Therefore, a firm theoretical foundation for Pomeron in QCD has been established. It is now possible to identify a *dual Pomeron* as a well-defined feature of the curved-space string theory [1].

We focus here on the recent developments based on Maldacena's weak/strong duality, (AdS/CFT), relating Yang-Mills theories to string theories in (deformed) Anti-de-Sitter space [1, 3, 4, 5]. The application of this duality to diffractive scattering and the Pomeron physics represent an important area where a connection with the string-theory-based techniques can be made. Furthermore, it is now possible to extend this treatment to central diffractive production of Higgs at LHC.

In the large 't Hooft coupling limit, Pomeron can be considered as a *Reggeized Massive Graviton*, propagating in a 5-dimensional curved space, the so-called AdS_5 , where both the IR (soft) Pomeron and the UV (BFKL) Pomeron are dealt in a unified single step. The connection with the stringy aspects in a five-dimensional description is indeed very direct. In gauge theories with string-theoretical dual descriptions, the Pomeron emerges unambiguously. Indeed, Pomeron is directly related to the graviton and its higher spin partners on the leading (five-dimensional) Regge trajectory. In AdS/CFT, confinement is associated with a deformed AdS_5 geometry having an effective horizon, e.g., that for a black hole. The solution to this is

* speaker

unknown and represents the major theoretical challenge in model-building. Each model leads to certain unique signature. LHC data can provide guide and direction in this endeavor.

2 Pomeron and QCD Parameter-Space

It is useful to take a step back in examining high energy scattering in QCD. From a theoretical stand point it is useful to consider a 3-parameter space varying the number of colors (N_c), the 't Hooft coupling ($\lambda = g^2 N_c$), and the virtuality of an external probe $1/Q$, e.g., that of a virtual photon.

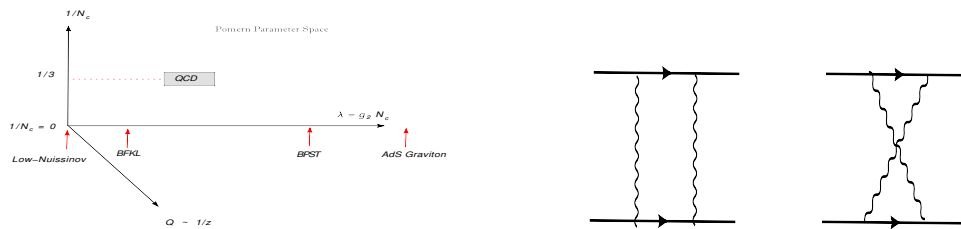


Figure 1: (a) The Pomeron in QCD viewed as a function of colors (N_c), the 't Hooft coupling ($\lambda = g^2 N_c$), and the resolution (virtuality: $Q \sim 1/z$) of the probe. (b) Two-gluon exchange as Low-Nussinov Pomeron.

Thus diffractive scattering (or Pomeron exchange) in QCD can now be considered in two steps. First one may consider the leading contribution in the $1/N_c$ expansion holding fixed the 't Hooft coupling $\lambda = g^2 N_c$. For example, instead of $N_c = 3$, the leading term for the Regge limit of 2-to-2 scattering in this limit is the exchange of a network of gluons with the topology of a cylinder in the 't Hooft topological expansion or, in string language, the exchange of a closed string. This gives rise to what we call the “bare Pomeron” exchange. Taking into account high order terms in the $1/N_c$ leads to two effects: (1) The cylinder diagrams includes closed quark loops, leading to $q\bar{q}$ pairs or multi-hadron production via the optical theorem dominated by low mass pions, kaon etc. (2) The multiple exchange of the bare Pomeron which includes the eikonal corrections (or survival probability) and triple-Pomeron and higher order corrections in a Reggeon calculus. We will focus primarily on the “bare Pomeron” sector and will discuss only briefly higher order effect due to eikonalization.

In weak coupling summations where $\lambda \ll 1$ and N_c large, the leading singularity (prior to full unitarization) is at $j_0 = 1 + (\ln 2/\pi^2) \lambda$ where $\lambda = g^2 N_c$ is the 't Hooft coupling. Indeed, in the limit $\lambda \rightarrow 0$, this so-called BFKL Pomeron reduces to the Low-Nussinov Pomeron, i.e., two-gluon exchange, as depicted in Fig. 1b. When this description is adequate, hadronic cross sections are expected to rise as a small power s^{j_0-1} until unitarity forces compliance with the Froissart bound. However there is an additional probe of the “Pomeron” as a function of virtuality Q^2 in off-shell photon scattering.

It is generally acknowledged that diffractive scattering is intrinsically a non-perturbative phenomenon. In the limit where the 't Hooft coupling is large, weak coupling calculations become unreliable. In Ref. [1], it has been shown that the leading singularity in strong coupling in the conformal limit approached $j = 2$. In the language of the AdS/CFT, Pomeron is the graviton pole in the 5-dim AdS space where the AdS radius r serves the 5th dimension. (In

what follows, this will be referred to as the strong coupling BPST Pomeron, or simply the BPST Pomeron.)

One of the more interesting developments of the BPST Pomeron is the recognition that the virtuality of an external probe, $1/Q$, can be identified with the AdS radius, $z = 1/r$. Conformal invariance, which allows a simultaneous scale transformations in the transverse size and the probe scale, can now be encoded as the isometry of the transverse Euclidean AdS_3 .

3 Forward Scattering, Gauge/String Duality, and Confinement

For conformally invariant gauge theories, the metric of the dual string theory is a product, $AdS_5 \times W$, $ds^2 = \left(\frac{r^2}{R^2}\right) \eta_{\mu\nu} dx^\mu dx^\nu + \left(\frac{R^2}{r^2}\right) dr^2 + ds_W^2$, where $0 < r < \infty$. For the dual to $\mathcal{N} = 4$ super-symmetric Yang-Mills theory the AdS radius R is $R^2 \equiv \sqrt{\lambda} \alpha' = (g_{YM}^2 N)^{1/2} \alpha'$, and W is a 5-sphere of this same radius. We will ignore fluctuations over W and also assume that $\lambda \gg 1$, so that the space-time curvature is small on the string scale, and $g_{YM}^2 \ll 1$ so that we can use string perturbation theory. (See [1, 3, 4] for more references.)

The fact that 5-dim description enters in high energy collision can be understood as follows. In addition to the usual LC momenta, $p_\pm = p^0 \pm p^z$ (2d), and transverse impact variables, \vec{b} (2d), there is one more ‘‘dimension’’: a ‘‘resolution’’ scale specified by a probe, e.g., $1/Q^2$ of virtual photon in DIS, (see Fig. 2a.) Because of conformal symmetry, these 5 coordinates transform into each others, leaving the system invariant. In the strong coupling limit, conformal symmetry is realized as the $SL(2, C)$ isometries of Euclidean AdS_3 subspace of AdS_5 , where r can be identified with Q^2 .

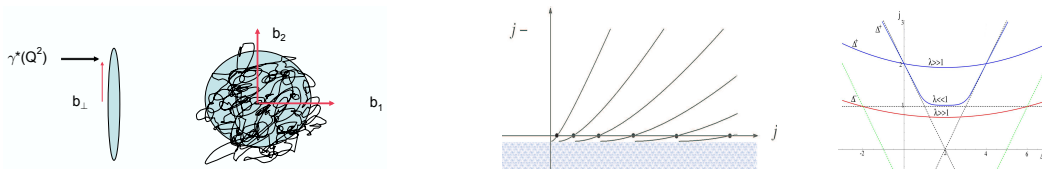


Figure 2: (a) Intuitive picture for AdS^5 kinematics. (b) Schematic representation of J -plane singularity structure. (c) Schematic form of Δ - j relation for $\lambda \ll 1$ and $\lambda \gg 1$.

One important step in formulating the dual Pomeron involves the demonstration [6] that in exclusive hadron scattering, the dual string theory amplitudes at wide angle, due to the red-shifted local-momenta, $s \rightarrow \tilde{s} = (R/r)^2 s$ and $t \rightarrow \tilde{t} = (R/r)^2 t$, give the power laws that are expected in a gauge theory. It was also noted that at large s and small t that the classic Regge form of the scattering amplitude should be present in certain kinematic regimes [6]. Equally important is the fact that, with confinement, transverse fluctuations of the metric tensor G_{MN} in AdS acquire a mass and can be identified with a tensor glueball [7, 8]. It was suggested in [8] that, at finite λ , this will lead to a Pomeron with an intercept below 2. That is, Pomeron can be considered as a *Reggeized Massive Graviton*.

For a conformal theory in the large N_c limit, a dual Pomeron can always be identified with the leading eigenvalue of a Lorentz boost generator M_{+-} of the conformal group [3]. The problem reduces to finding the spectrum of a single J -plane Schrödinger operator. One finds

that, in the strong coupling limit, conformal symmetry requires that the leading $C = +1$ Regge singularity is a fixed J -plane cut, $j_0^{(+)} = 2 - 2/\sqrt{\lambda}$. For ultraviolet-conformal theories with confinement deformation, the spectrum exhibits a set of Regge trajectories at positive t , and a leading J -plane cut for negative t , the cross-over point being model-dependent. (See Fig. 2b.) For theories with logarithmically-running couplings, one finds a discrete spectrum of poles at all t , with a set of slowly-varying and closely-spaced poles at negative t .

4 Conformal Pomeron, Odderon and Analyticity

At high-energy, analyticity and crossing lead to $C = \pm 1$ vacuum exchanges, the *Pomeron* and the *Odderon*. The qualitative picture for Pomeron exchange in weak coupling [9] has been understood for a long time, in leading order expansion in g_{YM}^2 and all order sum in $g_{YM}^2 \log(s/s_0)$. In the conformal limit, both the weak-coupling BFKL Pomeron and Odderons correspond to J -plane branch points, e.g., the BFKL Pomeron is a cut at $j_0^{(+)}$, above $j = 1$. Two leading Odderons have been identified. (See [4, 10] for more references.) Both are branch cuts in the J -plane. One has an intercept slightly below 1 [11], and the second has an intercept precisely at 1 [12]. These are summarized in Table 1.

In the strong coupling limit, as we have already mentioned above, conformal symmetry dictates that the leading $C = +1$ Regge singularity is a fixed J -plane cut at $j_0^{(+)} = 2 - 2/\sqrt{\lambda} + O(1/\lambda)$. As λ increases, the ‘‘conformal Pomeron’’ moves to $j = 2$ from below, approaching the *AdS* graviton. We have recently shown [4] that the strong coupling *conformal odderons* are again fixed cuts in the J -plane, with intercepts specified by the AdS mass squared, m_{AdS}^2 , for Kalb-Ramond fields [13], $j_0^{(-)} = 1 - m_{AdS}^2/2\sqrt{\lambda} + O(1/\lambda)$. Interestingly, two leading *dual odderons* can be identified, parallel the weak-coupling situation. One solution has $m_{AdS,(1)}^2 = 16$. There is also a second solution where $m_{AdS,(2)}^2 = 0$. We outline below how these features emerge in *Gauge/String duality*.

	Weak Coupling	Strong Coupling
$C = +1$: Pomeron	$j_0^{(+)} = 1 + (\ln 2) \lambda/\pi^2 + O(\lambda^2)$	$j_0^{(+)} = 2 - 2/\sqrt{\lambda} + O(1/\lambda)$
$C = -1$: Odderon	$j_{0,(1)}^{(-)} \simeq 1 - 0.24717 \lambda/\pi + O(\lambda^2)$	$j_{0,(1)}^{(-)} = 1 - 8/\sqrt{\lambda} + O(1/\lambda)$
	$j_{0,(2)}^{(-)} = 1 + O(\lambda^3)$	$j_{0,(2)}^{(-)} = 1 + O(1/\lambda)$

Table 1: Pomeron and Odderon intercepts at weak and strong coupling.

4.1 Flat-Space Expectation for $C = \pm 1$ Sectors

String scattering in 10-d flat-space at high energy leads to a crossing-even and crossing-odd amplitudes, $\mathcal{T}_{10}^{(\pm)}(s, t) \rightarrow f^{(\pm)}(\alpha't)(\alpha's)^{\alpha_{\pm}(t)}$, where $\alpha_+(t) = 2 + \alpha't/2$ and $\alpha_-(t) = 1 + \alpha't/2$ respectively. That is, at $t = 0$, a massless state with integral spin is being exchanged, e.g., for $C = +1$, one is exchanging a massless spin-2 particle, the ubiquitous graviton. Of course, the coefficient functions, $f^{(\pm)}(\alpha't)$, are process-dependent.

Massless modes of a closed string theory can be identified with transverse fluctuations coming from a left-moving and a right-moving level-one oscillators, e.g., states created by applying

$a_{1,I}^\dagger \tilde{a}_{1,J}^\dagger$ to the vacuum, i.e., $a_{1,I}^\dagger \tilde{a}_{1,J}^\dagger |0; k^+, k_\perp\rangle$, with $k^2 = 0$. Since a 10-dim closed string theory in the low-energy limit becomes 10-dim gravity; these modes can be identified with fluctuations of the metric G_{MN} , the anti-symmetric Kalb-Ramond background B_{MN} [13], and the dilaton, ϕ , respectively. It is important to note that we will soon focus on AdS^5 , i.e., one is effectively working at $D = 5$. With $D = 5$, the independent components for G_{MN} and B_{MN} are 5 and 3 respectively, precisely that necessary for having (massive) states with spin 2 and 1 [8]. For oriented strings, it can be shown that the symmetric tensor contributes to $C = +1$ and the anti-symmetric tensor contributes to $C = -1$.

4.2 Diffusion in AdS and DGLAP Connection

Let us next introduce diffusion in AdS. We will restrict ourselves to the conformal limit. Regge behavior is intrinsically non-local in the transverse space. For flat-space scattering in 4-dimension, the transverse space is the 2-dimensional impact parameter space, \vec{b} . In the Regge limit of s large and $t < 0$, the momentum transfer is transverse. Going to the \vec{b} -space, $t \rightarrow \nabla_{\vec{b}}^2$, and the flat-space Regge propagator, for both $C = \pm 1$ sectors, is nothing but a diffusion kernel, $\langle \vec{b} | (\alpha' s)^{\alpha_\pm(0) + \alpha' t \nabla_{\vec{b}}^2 / 2} | \vec{b}' \rangle$, with $\alpha_+(0) = 2$ and $\alpha_-(0) = 1$ respectively. In moving to a ten-dimensional momentum transfer \tilde{t} , we must keep a term coming from the momentum transfer in the six transverse directions. This extra term leads to diffusion in extra-directions, i.e., for $C = +1$,

$$\alpha' \tilde{t} \rightarrow \alpha' \Delta_P \equiv \frac{\alpha' R^2}{r^2} \nabla_{\vec{b}}^2 + \alpha' \Delta_{\perp P}.$$

The transverse Laplacian is proportional to R^{-2} , so that the added term is indeed of order $\alpha'/R^2 = 1/\sqrt{\lambda}$. To obtain the $C = +1$ Regge exponents we will have to diagonalize the differential operator Δ_P . Using a Mellin transform, $\int_0^\infty d\tilde{s} \tilde{s}^{-j-1}$, the Regge propagator can be expressed as

$$\tilde{s}^{2+\alpha' \tilde{t}/2} = \int \frac{dj}{2\pi i} \tilde{s}^j G^{(+)}(j) = \int \frac{dj}{2\pi i} \frac{\tilde{s}^j}{j - 2 - \alpha' \Delta_P / 2}$$

where $\Delta_P \simeq \Delta_j$, the tensorial Laplacian. Using a spectral analysis, it leads to a J -plane cut at $j_0^{(+)}$.

A similar analysis can next be carried out for the $C = -1$ sector. We simply replace the Regge kernel by

$$\tilde{s}^{1+\alpha' \tilde{t}/2} = \int \frac{dj}{2\pi i} \tilde{s}^j G^{(-)}(j) = \int \frac{dj}{2\pi i} \tilde{s}^j (j - 1 - \alpha' \Delta_O / 2)^{-1}.$$

The operator $\Delta_O(j)$ can be fixed by examining the EOM at $j = 1$ for the associated supergravity fluctuations responsible for this exchange, i.e., the anti-symmetric Kalb-Ramond fields, B_{MN} . One finds two solutions,

$$G^{(-)}(j) = \frac{1}{[j - 1 - (\alpha'/2R^2)(\square_{Maxwell} - m_{AdS,i}^2)]}, \quad i = 1, 2,$$

where $\square_{Maxwell}$ stands for the Maxwell operator. Two allowed values are $m_{AdS,1}^2 = 16$ and $m_{AdS,2}^2 = 0$. A standard spectral analysis then lead to a branch-cut at $j_0^{(-)}$.

It is also useful to explore the conformal invariance as the isometry of transverse AdS_3 . Upon taking a two-dimensional Fourier transform with respect to q_\perp , where $t = -q_\perp^2$, one finds that $G^{(\pm)}$ can be expressed simply as

$$G^{(\pm)}(z, x^\perp, z', x'^\perp; j) = \frac{1}{4\pi z z'} \frac{e^{(2-\Delta^{(\pm)}(j))\xi}}{\sinh \xi}, \quad (1)$$

where $\cosh \xi = 1 + v$, $v = [(x^\perp - x'^\perp)^2 + (z - z')^2]/(2zz')$ the AdS_3 chordal distance, and $z = R^2/r$, and $\Delta^{(\pm)}(j) = 2 + \sqrt{2} \lambda^{1/4} \sqrt{(j - j_0^{(\pm)})}$ is a J -dependent effective AdS_5 conformal dimension [1, 3, 4]. The $\Delta - j$ curve for $\Delta^{(\pm)}$ is shown in Fig. 2c.

5 Unitarity, Absorption, Saturation and the Eikonal Sum

For simplicity, we will focus here on the $C = +1$ sector, assuming all crossing odd amplitudes vanish. It has been shown in Refs. [3, 5] that, in the strong coupling limit, a 2-to-2 amplitude, $A(s, t)$, in the near-forward limit can be expressed in terms of a “generalized” eikonal representation,

$$A_{2 \rightarrow 2}(s, t) = \int dz dz' P_{13}(z) P_{24}(z') \int d^2 b e^{-i b^\perp q_\perp} \tilde{A}(s, b^\perp, z, z'), \quad (2)$$

where $\tilde{A}(s, b^\perp, z, z') = 2is \left[1 - e^{i\chi(s, b^\perp, z, z')} \right]$, and $b^\perp = x^\perp - x'^\perp$ due to translational invariance. The probability distributions for left-moving, $P_{13}(z)$, and right moving, $P_{14}(z)$ particles are products of initial (in) and final (out) particle wave functions. The eikonal, χ , can be related to the strong coupling Pomeron kernel [1, 3], and can be expressed as the inverse Mellin transform of $G^{(+)}(j, x^\perp - x'^\perp, z, z')$.

We note the salient feature of eikonal scattering locally in transverse AdS_3 , and the near-forward field-theoretic amplitude is obtained from a bulk eikonal amplitude after convolution. It is useful to focus our attention on the properties of the bulk eikonal formula $\tilde{A}(s, b^\perp, z, z')$ itself. For χ real, it is elastic unitary. On the other hand, when χ is complex, (with $\text{Im}\chi > 0$), one has inelastic production. Absorption and saturation can now be addressed in this context. It is also important to note that, for Froissart bound, confinement is crucial. Discussion on these and related issues can be found in Ref. [3]. For applications of [1, 3, 4, 5] for DIS, see [14]. For a more proper treatment while taking into account of confinement effects, see [15].

6 Diffractive Production of Higgs at LHC

A promising production mechanism for Higgs meson at the LHC involves the forward proton-proton scattering $pp \rightarrow pHp$. Because of the exceptional signal to background discrimination, this may even be a discovery channel depending of course on the production cross section. The theoretical estimates generally involve the assumption of perturbative contribution of gluon fusion in the central rapidity region [16]. In most estimates the Pomeron is effectively replaced by two-gluon exchange, e.g., the Low-Nussinov Pomeron. In spite of the plausibility of this approach, there are considerable uncontrolled uncertainties.

We have begun the analysis in strong coupling based on the AdS/CFT correspondence and conformal strong coupling BPST Pomeron [1] This amounts to a generalization of our previous

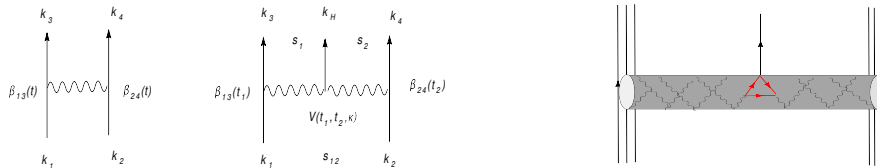


Figure 3: (a) kinematics for single-Regge limit for 2-to-2 amplitudes, (b) Double-Regge kinematics for 2-to-3 amplitudes. (c) Cylinder Diagram for large N_c Higgs Production.

AdS for 2-to-2 amplitudes to one for 2-to-3 amplitudes, e.g., from Fig. 3a to Fig. 3b. A more refined analysis for Higgs production involves a careful treatment for that depicted in Fig. 3c. While this also will have its uncertainties, a careful comparison between weak and strong coupling Pomeron should give better bounds on these uncertainties. Ultimately the strong coupling approach calibrated by comparison with experimental numbers for double diffraction heavy quark production, can provide increasingly reliable estimates for Higgs production.

Focusing only on contributions from Pomeron exchange, a flat-space 2-to-2 amplitude in the Regge limit can be expressed as (Fig. 3a)

$$A(s, t) \simeq \beta_{13}(t) \frac{1 + e^{-i\alpha(t)}}{\sin \pi\alpha(t)} (\alpha' s)^{\alpha(t)} \beta_{24}(t).$$

For a 5-point amplitude, there are five independent invariants, Fig. 3b. In the kinematic region for diffractive scattering where transverse momenta of all produced particles are limited, $\kappa \equiv s_1 s_2 / s$ is fixed, with $\kappa \simeq m_H^2 + q_\perp^2$, in the frame where incoming particles are longitudinal. Using a double J -plane representation, in the double-Regge region, a 2-to-3 amplitude can be expressed using a double- J -plane representation, as

$$T(s, s_1, s_2, t_1, t_2) \simeq \int_{-i\infty}^{i\infty} \frac{dj_1}{2\pi i} \int_{-i\infty}^{i\infty} \frac{dj_2}{2\pi i} \xi(j_1) (\alpha' s_1)^{j_1} \xi(j_2) (\alpha' s_2)^{j_2} \beta_{13}(t_1) \cdot G_{j_1}(t_1) \mathcal{V}(t_1, t_2, \kappa) G_{j_2}(t_2) \beta_{24}(t_2)$$

where ξ is the signature factor and \mathcal{V} is the Pomeron-Particle-Pomeron coupling.

To move on to AdS , we simply need to replace $G_j(t)$ and $\mathcal{V}(t_1, t_2, \kappa)$ by corresponding generalizations. The essential new feature is a new vertex, \mathcal{V} , depicted in Fig. 3c, appropriate for a diffractive central Higgs production [17]. From $m_0 \ll m_H \ll m_t$, the Higgs vertex is replaced by a source for $F_{\mu\nu}^a F_{\mu\nu}^a$ at the boundary of AdS ($z \rightarrow 0$). The standard AdS/CFT dictionary leads to a bulk to boundary propagator $\Delta(x - x', z)$ for the interior of AdS to this point so that this vertex can be approximated by a factorized product. In a subsequent analysis we will add corrections due to (i) conformal symmetry breaking, (ii) the proton impact factor and (iii) eikonal “survival” probability to obtain phenomenological results for double Pomeron Higgs production at the LHC. These will be reported in future publications [17].

References

- [1] R. C. Brower, J. Polchinski, M. J. Strassler and C. I. Tan, JHEP **0712**, 005 (2007).
- [2] E. Levin and C. I. Tan, “Heterotic Pomeron: A Unified Treatment of High-Energy Hadronic Collisions in QCD”, “Proc. for International Symposium on Multiparticle Dynamics”, Santiago, Spain, July 1992,

- and “Workshop on Small-x and Diffractive Physics at Tevatron”, FNAL, Sept. 1992, hep-ph/9302308; S. Bondarenko, E. Levin and C. I. Tan, Nucl. Phys. A **732**, 73 (2004).
- [3] R. C. Brower, M. J. Strassler and C. I. Tan, JHEP **0903**, 050 (2009);
R. C. Brower, M. J. Strassler and C. I. Tan, JHEP **0903**, 092 (2009).
- [4] R. C. Brower, M. Djuric and C. I. Tan, JHEP **0907**, 063 (2009).
- [5] L. Cornalba, et al., Nucl. Phys. B **767**, 327 (2007); JHEP **0708**, 019 (2007);
0709, 037 (2007); **0806**, 048 (2008).
- [6] J. Polchinski and M. J. Strassler, Phys. Rev. Lett. **88**, 031601 (2002);
R. C. Brower and C. I. Tan, Nucl. Phys. B **662**, 393 (2003).
- [7] R. C. Brower, S. D. Mathur and C. I. Tan, Nucl. Phys. B **574**, 219 (2000);
R. C. Brower, S. D. Mathur and C. I. Tan, Nucl. Phys. Proc. Suppl. **83**, 923 (2000).
- [8] R. C. Brower, S. D. Mathur and C. I. Tan, Nucl. Phys. B **587**, 249 (2000).
- [9] L. N. Lipatov, Sov. J. Nucl. Phys. **23**, 338 (1976) [Yad. Fiz. **23**, 642 (1976)].
- [10] C. Ewerz, “The odderon: Theoretical status and experimental tests,” arXiv:hep-ph/0511196.
- [11] R. A. Janik and J. Wosiek, Phys. Rev. Lett. **82**, 1092 (1999); M. A. Braun, hep-ph/9805394.
- [12] J. Bartels, L. N. Lipatov and G. P. Vacca, Phys. Lett. B **477**, 178 (2000) [arXiv:hep-ph/9912423].
- [13] M. Kalb and P. Ramond, Phys. Rev. D **9**, 2273 (1974).
- [14] E. Levin, J. Miller, B. Z. Kopeliovich and I. Schmidt, JHEP **0902**, 048 (2009);
Y. Hatta, E. Iancu and A. H. Mueller, JHEP **0801**, 026 (2008);
L. Cornalba and M. S. Costa, Phys. Rev. D **78**, 096010 (2008).
- [15] R. C. Brower, M. Djurić, Ina Sarcevic and C. I. Tan, “DIS after AdS/CFT”, (in preparation).
- [16] A. D. Martin, M. G. Ryskin and V. A. Khoze, Acta Phys. Polon. B **40**, 1841 (2009);
J. R. Cudell, A. Dechambre, O. F. Hernandez and I. P. Ivanov, Eur. Phys. J. C **61**, 369 (2009);
E. Gotsman, H. Kowalski, E. Levin, U. Maor and A. Prygarin, Eur. Phys. J. C **47**, 655 (2006).
- [17] R. C. Brower, M. Djurić, and C. I. Tan, “Double Diffractive Higgs Production in Strong Coupling”, (in preparation).