

MIT Joint Program on the Science and Policy of Global Change



On the Correlation between Forcing and Climate Sensitivity

Andrei P. Sokolov

**Report No. 188
August 2010**

The MIT Joint Program on the Science and Policy of Global Change is an organization for research, independent policy analysis, and public education in global environmental change. It seeks to provide leadership in understanding scientific, economic, and ecological aspects of this difficult issue, and combining them into policy assessments that serve the needs of ongoing national and international discussions. To this end, the Program brings together an interdisciplinary group from two established research centers at MIT: the Center for Global Change Science (CGCS) and the Center for Energy and Environmental Policy Research (CEEPR). These two centers bridge many key areas of the needed intellectual work, and additional essential areas are covered by other MIT departments, by collaboration with the Ecosystems Center of the Marine Biology Laboratory (MBL) at Woods Hole, and by short- and long-term visitors to the Program. The Program involves sponsorship and active participation by industry, government, and non-profit organizations.

To inform processes of policy development and implementation, climate change research needs to focus on improving the prediction of those variables that are most relevant to economic, social, and environmental effects. In turn, the greenhouse gas and atmospheric aerosol assumptions underlying climate analysis need to be related to the economic, technological, and political forces that drive emissions, and to the results of international agreements and mitigation. Further, assessments of possible societal and ecosystem impacts, and analysis of mitigation strategies, need to be based on realistic evaluation of the uncertainties of climate science.

This report is one of a series intended to communicate research results and improve public understanding of climate issues, thereby contributing to informed debate about the climate issue, the uncertainties, and the economic and social implications of policy alternatives. Titles in the Report Series to date are listed on the inside back cover.


Ronald G. Prinn and John M. Reilly
Program Co-Directors

For more information, please contact the Joint Program Office

Postal Address: Joint Program on the Science and Policy of Global Change
77 Massachusetts Avenue
MIT E19-411
Cambridge MA 02139-4307 (USA)

Location: 400 Main Street, Cambridge
Building E19, Room 411
Massachusetts Institute of Technology

Access: Phone: +1(617) 253-7492
Fax: +1(617) 253-9845
E-mail: globalchange@mit.edu
Web site: <http://globalchange.mit.edu/>

 Printed on recycled paper

On the Correlation between Forcing and Climate Sensitivity

Andrei P. Sokolov*

Abstract

The possible correlation between climate sensitivity and radiative forcing is studied using versions of the NCAR Community Atmospheric Model (CAM) model with different climate sensitivities. No such correlation was found for the CO₂ forcing. A weak correlation for the direct sulfate aerosol forcing is associated with differences in cloud cover in control climate simulations with different versions of the model. Presented results suggest that correlation between sensitivity and radiative forcing in the 20th century simulations with different AOGCMs is not a reflection of physical reality but is a result of different treatments of forcing agents, primarily aerosols.

Contents

1. INTRODUCTION	1
2. MODEL AND METHOD.....	2
3. RESULTS AND CONCLUSIONS.....	4
4. REFERENCES	7

1. INTRODUCTION

Kiehl (2007), Knutti (2008) and Anderson *et al.* (2010) showed that strengths of radiative forcing in the 20th century simulations with different AOGCMs are correlated with climate sensitivities of these models. They, however, disagree on the nature of such correlation.

Kiehl (2007) showed that differences in the total radiative forcing between AOGCMs are primarily due to differences in the aerosol forcing used by these models. Knutti (2008) suggests that choices concerning aerosol treatment (*e.g.*, whether to include indirect aerosol effect) might have been made based on the results of historical climate change simulations. Knutti (2008) also indicated a possibility of correlation between indirect aerosol effect and climate sensitivity, but noted that only 7 out the analyzed 23 models included this effect. On the other hand, Anderson *et al.* (2010) seem to suggest an existence of physically based correlation between radiative forcing and climate sensitivity. In particular, they state that radiative forcing due to doubling of the CO₂ concentration will vary over a very wide range depending on the model climate sensitivity. They also state that not taking this correlation into account in probabilistic projections of climate change is likely to increase uncertainty of such projections.

In the present study the relation between climate sensitivity and radiative forcing is investigated by means of numerical simulations using three versions of the CAM3 model with different climate sensitivities. The treatment of different forcing agents is identical in simulations with different CAM3 versions. Such simulations allow to test whether the found correlation between forcing and sensitivity is physically based or is an artifact of the different forcing representations in different models.

*Corresponding author Andrei Sokolov. E-mail: sokolov@mit.edu. Joint Program on the Science and Policy of Global Change, Massachusetts Institute of Technology, 77 Massachusetts Ave., E19-429g, Cambridge, MA 02139.

2. MODEL AND METHOD

The NCAR Community Atmospheric Model, version 3 (CAM3) (Collins *et al.*, 2004) with T21 resolution was used in this study. Standard version of this model has sensitivity of 2.6°C to the doubling of CO₂ concentration. Versions of the model with higher and lower sensitivity were obtained by changing the relative humidity of cloud formation for high and low clouds. As was noted by Sanderson (2009), CAM3 is rather insensitive to changes in the model's parameters. As a result sensitivities of these two versions of CAM3 are not very different from the standard, namely 2.9 and 2.0°C.

At first, two 90 year transient simulations were carried out with the standard version of the CAM3 coupled to an anomaly diffusing ocean model (Sokolov *et al.*, 2003). During the first ten years of each simulation concentrations of GHGs and other forcing agents were held fixed. After that, in the first simulation the model was forced by the CO₂ concentration increasing at 1% per year rate. In the second simulation the model was forced by an increase in the loading of sulfate aerosol, namely the default loading was scaled in time with a scaling coefficient increasing from 1 to 5 in 70 years.[†]

The sea surface temperature (SST) and sea ice distributions obtained in these two simulations were then used to evaluate the radiative forcing and implied ocean heat uptake following the approach of Anderson *et al.* (2010) using a set of AMIP type simulations.

Two simulations were performed with each version of the CAM3 for each forcing case. In the first simulation, referred to as the AMIP simulation, the atmospheric model was forced by prescribed changes in SST and sea ice with the forcing fixed at its initial value. In the second simulations (AMIP+ATM) the model was forced by both changes in SST and corresponding forcing. Changes in the radiative balance (H) at the top of the atmosphere (TOA) in the first simulation can be written as:

$$\Delta H_{AMIP} = -\lambda \cdot \Delta T_{AMIP}, \quad (1)$$

where λ is a feedback parameter and T is surface air temperature (SAT). Changes in the radiative balance at the TOA in the second simulation equal

$$\Delta H_{AMIP+ATM} = F - \lambda \cdot \Delta T_{AMIP+ATM} = OHU, \quad (2)$$

where F is radiative forcing and OHU is an implied ocean heat uptake required for the given version of atmospheric model to simulate prescribed changes in SAT.

Value of λ can be estimated by regressing H_{AMIP} against ΔT_{AMIP} . Spencer and Braswell (2008), using a simple box model, demonstrated that the values of the feedback parameter estimated in such a way can be biased. Murphy and Forster (2010), however, showed that the accuracy of this approach is significantly higher than implied by Spencer and Braswell (2008). As will be shown below, climate sensitivities calculated from the results of AMIP simulations are very close to those estimated from the equilibrium 2xCO₂ simulations with a slab ocean model.

[†] The CAM3 version available at NCAR website has a scaling option for carbon but not for sulfate aerosol. Scaling of the sulfate aerosol was implemented by Erwan Monier at MIT.

Finally, radiative forcing can be expressed from equation (2) as

$$F = \Delta H_{\text{AMIP+ATM}} + \lambda \cdot \Delta T_{\text{AMIP+ATM}} \quad (3)$$

Anderson *et al.* (2010), when estimating radiative forcing, ignored a small difference between ΔT_{AMIP} and $\Delta T_{\text{AMIP+ATM}}$. In simulations discussed below this difference is larger due to stronger forcing (**Figure 1**) and should be accounted for. All variables are plotted as a difference from the average over the first ten years of simulation, during which forcing was held fixed. The averages of three simulations from different initial conditions are shown in **Figures 2 and 3**.

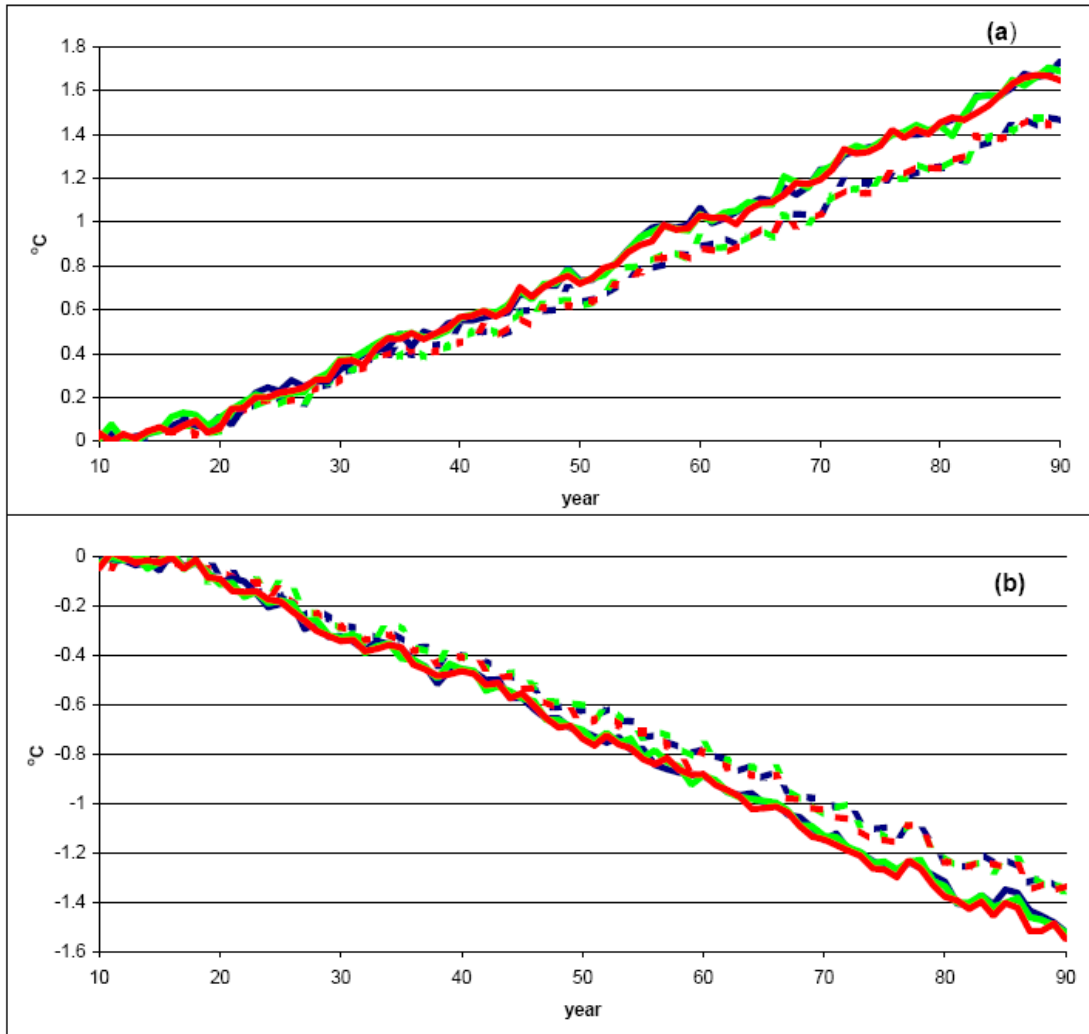


Figure 1. SAT changes in the AMIP (dashed lines) and AMIP+ATM (solid lines) simulations for (a) CO₂ and (b) sulfate aerosol forcings. Blue, green and red lines are for the model version with high, standard and low sensitivity respectively.

Use of the SST from model simulations with changes in CO₂ and sulfate aerosol, described above, has some advantages compared to the use of the observed 20th century SST. First, simulated SST changes are significantly larger than observed, while inter-annual variability is smaller. This leads to higher accuracy of calculations, as well as amplifies the difference between

simulations with different model versions. Second, it allows studying separately forcing associated with different forcing agents.

3. RESULTS AND CONCLUSIONS

Figure 2 shows results of the simulations for the CO₂ forcing case. Changes in the radiation at the TOA (Figure 2a) are noticeably different in the simulations with different versions of the model. Values of climate sensitivity ($S = \lambda^{-1}$) derived for AMIP simulations are given in **Table 1**.

Table 1. Values of climate sensitivity for different CAM3 versions evaluated from AMIP simulations for CO₂ and sulfate aerosol forcing cases and from equilibrium simulations with doubled CO₂ concentration.

Simulation	HS	SS	LS
AMIP CO2	0.77	0.62	0.50
AMIP aerosol	0.73	0.62	0.54
Equilibrium 2xCO2	0.75	0.67	0.53

On the other hand, the forcing associated with CO₂ increase (Figure 2b and **Table 2**) is practically identical in all simulations being equal to about 3.8 W/m² at the time of CO₂ doubling. According to results of Anderson *et al.* (2010), it should be changing from 3.7 to 5.4 W/m² (see their Figure 7). Sensitivities for 2xCO₂ case (Table 1) were calculated using forcing at the time of CO₂ doubling estimated from the equation (3) and changes in SAT from equilibrium simulations with a slab ocean model. As can be seen they are very close to the estimates obtained from AMIP simulations, confirming validity of the regression approach.

Table 2. Values of radiative forcing for different CAM3 versions evaluated from AMIP simulations for CO₂ and sulfate aerosol forcing cases for years 76-85 and forcing for 5 time aerosol loading calculated in the control climate simulations.

Simulation	HS	SS	LS
AMIP CO2	3.88	3.73	3.74
AMIP aerosol	-3.60	-3.32	-3.17
Control simulation	-3.63	-3.37	-3.27

The implied heat uptake by the deep ocean, required to simulate imposed changes in SAT (Figure 2c), increases with climate sensitivity, as should be expected for identical radiative forcing.

Simulations with changes in the sulfate aerosol loading do show some dependency between forcing and climate sensitivity (Figure 3b). The dependency is, however, rather weak and does not eliminate differences in implied ocean heat uptake (Figure 3c).

As noted above, sensitivity of the CAM3 model was changed by varying parameters affecting cloud formation. As a result cloud cover in the control simulations with different model versions is rather different. This is a main reason for the differences in the sulfate aerosol forcing. The values of the aerosol forcing evaluated from AMIP simulations at the time of fivefold increase in aerosol loading are very similar to the values of the forcing calculated in the control climate

simulations by means of passive radiation calculation (Table 2). If different model parameters had been used for changing model sensitivity this dependency might not have existed. There are, however, studies indicating a correlation between climate sensitivity and cloud cover in control climate simulations for some GCMs (e.g. Volodin, 2008; Yokohata *et al.*, 2010), which can lead to weak correlation between aerosol forcing and climate sensitivity. It should be noted that CAM3 does not include indirect aerosol effects.

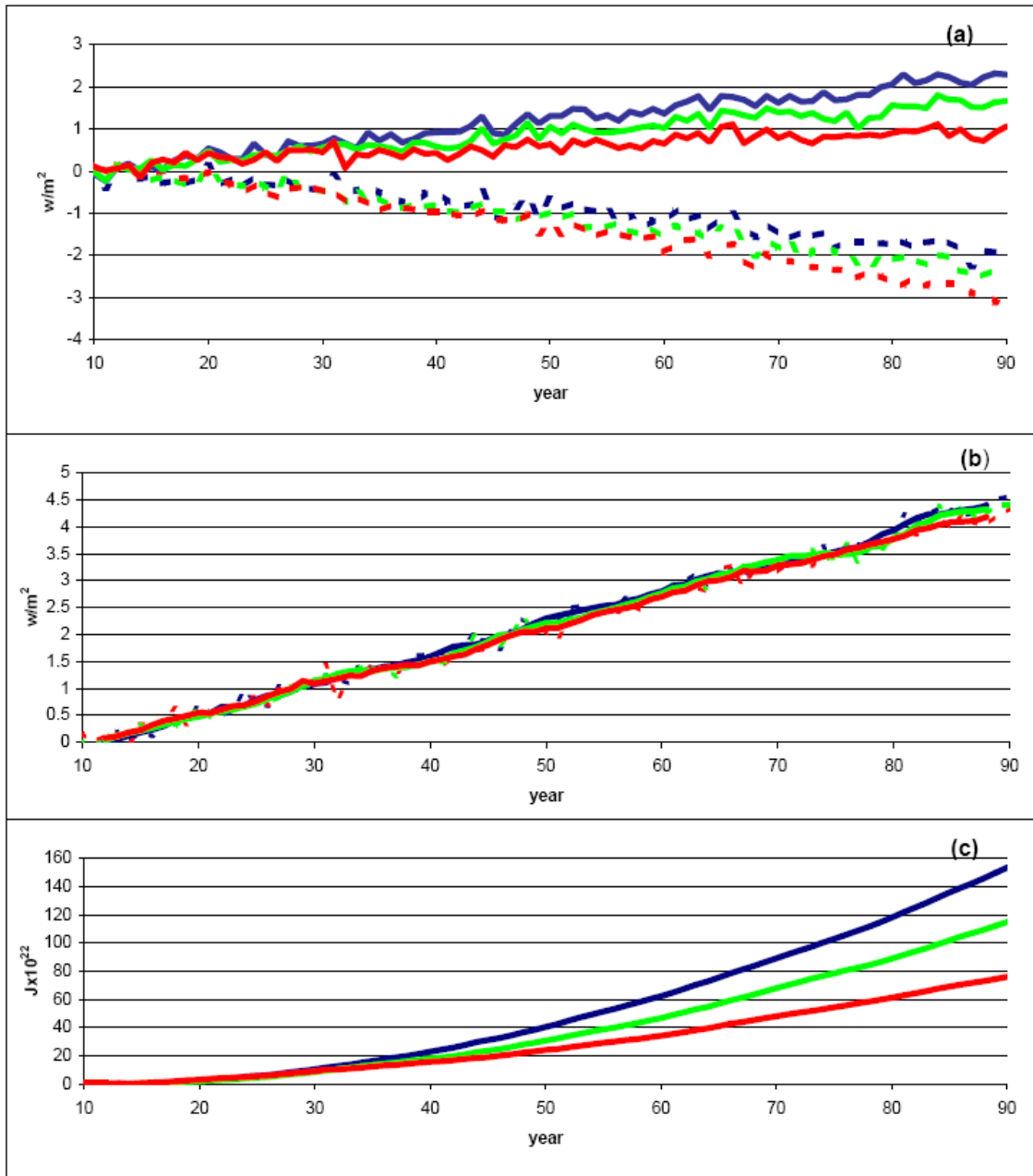


Figure 2. (a) Changes in the radiative balance at the TOA in the AMIP (dashed lines) and AMIP+ATM (solid lines) simulations; (b) annual radiative forcing (dashed lines) and five years running mean (solid lines); (c) implied cumulative heat uptake by the ocean for the CO₂ forcing case. Blue, green and red lines are for the model version with high, standard and low sensitivity respectively.

Results presented above suggest that there is no physically based correlation between radiative forcing and climate sensitivity. When forcings associated with different forcing agents are treated in the identical way such correlation is not present for CO₂ (and most likely other GHGs, such as CH₄ and N₂O) forcing and is rather weak for an aerosol forcing. Correlation between forcing and sensitivity in the 20th century simulations with different AOGCMs found in the number of recent studies (Kiehl, 2007; Knutti, 2008; Anderson *et al.*, 2010) is likely a result of different treatment of forcings, primarily aerosol forcing.

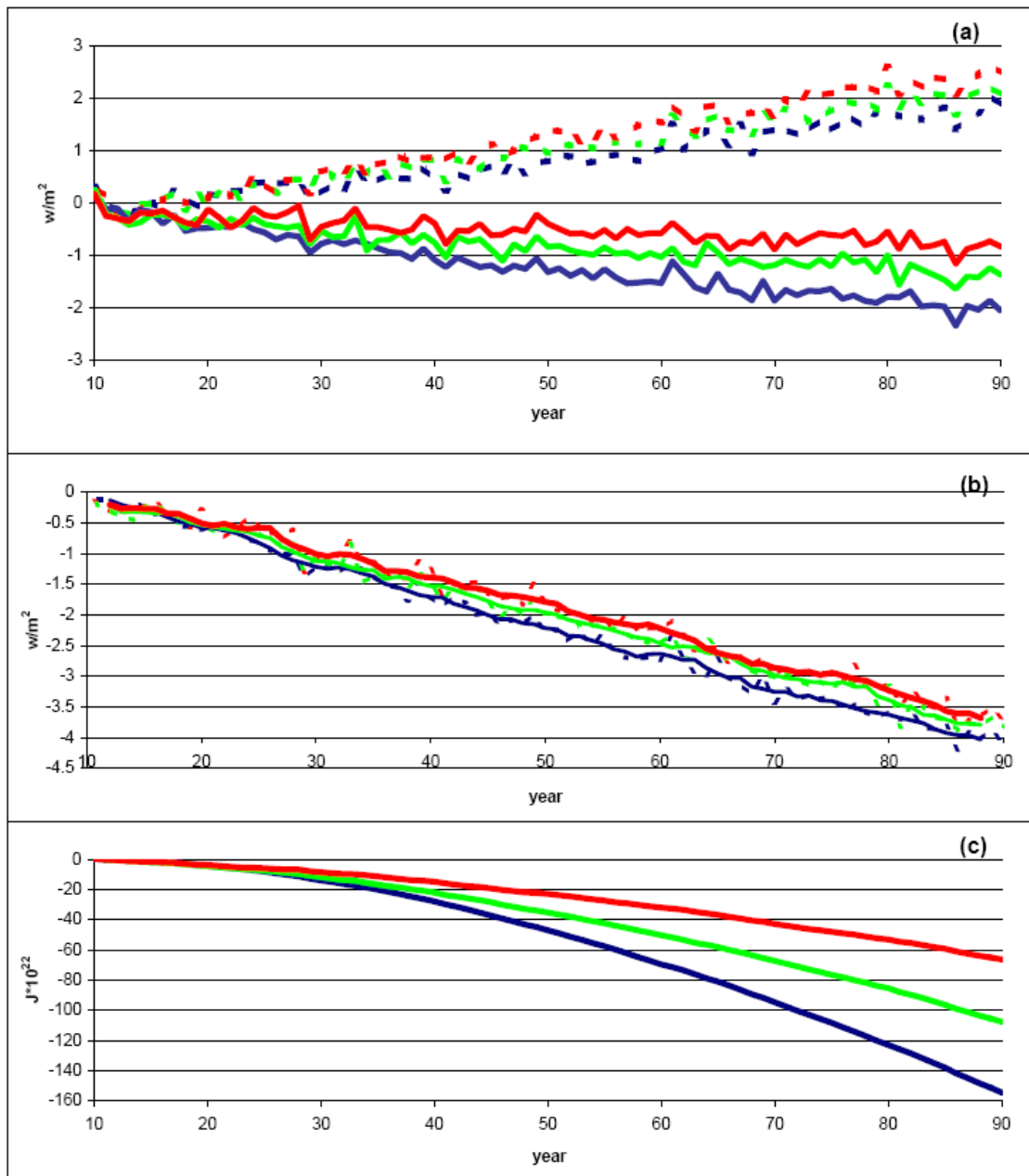


Figure 3. The same as Figure 2, but for sulfate aerosol forcing.

As have been already stated by Knutti (2008), an adjustment of aerosols forcing based on the results of historical climate change simulations is a completely legitimate approach. Probability distributions for the strength of aerosol forcing and climate parameters defining the model response to the forcing, e.g. climate sensitivity and the rate of heat uptake by the ocean, obtained with models of intermediate complexity based on the consistency between simulated and observed 20th century climates (Knutti *et al.*, 2002; Forest *et al.*, 2006), show significant correlation between parameters. Uncertainty in GHGs and other non-aerosol forcings are ignored in these studies because they are much smaller than uncertainty in aerosol forcing (Forster *et al.*, 2007)

Correlation between climate parameters should be (and is) taken into account in probabilistic projections of future climate change (Webster *et al.*, 2003; Knutti *et al.*, 2005; Sokolov *et al.*, 2009).

Acknowledgements.

I thank Chris Forest and Erwan Monier for their comments. The Joint Program on the Science and Policy of Global Change is funded by a number of federal agencies and a consortium of 40 industrial and foundation sponsors.

(For the complete list see <http://globalchange.mit.edu/sponsors/current.html>).

4. REFERENCES

- Anderson, B.T., J. R. Knight, M.A. Ringer, C. Deser, A. S. Phillips, J.-H. Yoon, and A. Cherchi, 2010: Climate forcings and climate sensitivities diagnosed from atmospheric global circulation models. *Clim. Dyn.*, on line first, DOI: 10.1007/s00382-010-0798y (<http://www.springerlink.com/content/6474581735486h25/fulltext.pdf>)
- Collins, W. D., and Coauthors, 2004: Description of the NCAR community atmosphere model (CAM3), *Tech. Rep. NCAR/TN-464+STR*, NCAR, Boulder, CO, 226 pp.
- Forest, C.E., P.H. Stone, and A.P. Sokolov, 2006: Estimated PDFs of Climate System Properties Including Natural and Anthropogenic Forcings. *Geophys. Res. Lett.*, **33**, L01705, <http://dx.doi.org/doi:10.1029/2005GL023977>.
- Forster, P., and Coauthors, 2007: Changes in atmospheric constituents and in radiative forcing. In: *Climate Change 2007: The Physical Science Basis. Contribution of Working Group I to the Fourth Assessment Report of the Intergovernmental Panel on Climate Change* (Solomon, S., D. Qin, M. Manning, Z. Chen, M. Marquis, K.B. Averyt, M. Tignor, and H.L. Miller (eds.)). Cambridge University Press, Cambridge, United Kingdom and New York, NY, USA.
- Kiehl, J. T., 2007: Twentieth century climate model response and climate sensitivity, *Geophys. Res. Lett.*, **34**, L22710, doi:10.1029/2007GRL033183.
- Knutti, R., T. F. Stocker, F. Joos, and G.-K. Plattner, 2002: Constraints on radiative forcing and future climate change from observations and climate model ensembles, *Nature*, **416**, 719-723.

- Knutti R., F. Joos, S. A. Muller, G.-K. Plattner, and T. F. Stocker, 2005: Probabilistic climate change projections for CO₂ stabilization profiles, *Geophys. Res. Lett.*, **32**, L20707, doi:10.1029/2005GRL023294.
- Knutti, R., 2008: Why are climate models reproducing the observed global surface warming so well? *Geophys. Res. Lett.*, **35**, L18704, doi:10.1029/2008GRL034932.
- Murphy, D. M., and P. M. Forster, 2010: On the accuracy of deriving climate feedback parameters from correlations between surface temperature and outgoing radiation, *J. Climate*, Early Online Releases of Papers in Press, (<http://journals.ametsoc.org/doi/pdf/10.1175/2010JCLI3657.1>)
- Sanderson, B.M., 2009: Robust constraints for climate sensitivity in multiple perturbed physics ensembles, *GC44A-03*, AGU Fall Meeting. San Francisco.
- Sokolov A. P., Forest C. E., and Stone P. H., 2003: Comparing oceanic heat uptake in AOGCM transient climate change experiments, *J Climate*, **16**, 1573-1582.
- Sokolov, A. P., and Coauthors, 2009: Probabilistic forecast for 21st century climate based on uncertainties in emissions (without policy) and climate parameters. *J. Climate*, **22**, 5175-5204, 2009.
- Spencer, R. W., and W. D. Braswell, 2008: Potential biases in feedback diagnosis from observational data: a simple model demonstration, *J. Climate*, **21**, 5624-5628.
- Volodin, E. M., 2008: Relation between temperature sensitivity to doubled carbon dioxide and the distributions of clouds in current climate models, *Izv. Atmos. Oceanic Phys*, **44**, 288-299.
- Webster, M., C. Forest, J. Reilly, M. Babiker, D. Kicklighter, M. Mayer, R. Prinn, M. Sarofim, A. Sokolov, P. Stone, and C. Wang, 2003: Uncertainty analysis of climate change and policy response. *Climatic Change*, **62**, 295-320.
- Yokohata, T., and Coauthors, 2010: Structural similarity and differences in climate response to CO₂ increase between two perturbed physics ensembles, *J. Climate*, **23**, 1392-1410.

REPORT SERIES of the MIT Joint Program on the Science and Policy of Global Change

1. **Uncertainty in Climate Change Policy Analysis**
Jacoby & Prinn December 1994
2. **Description and Validation of the MIT Version of the GISS 2D Model** *Sokolov & Stone* June 1995
3. **Responses of Primary Production and Carbon Storage to Changes in Climate and Atmospheric CO₂ Concentration** *Xiao et al.* October 1995
4. **Application of the Probabilistic Collocation Method for an Uncertainty Analysis** *Webster et al.* January 1996
5. **World Energy Consumption and CO₂ Emissions: 1950-2050** *Schmalensee et al.* April 1996
6. **The MIT Emission Prediction and Policy Analysis (EPPA) Model** *Yang et al.* May 1996 (*superseded* by No. 125)
7. **Integrated Global System Model for Climate Policy Analysis** *Prinn et al.* June 1996 (*superseded* by No. 124)
8. **Relative Roles of Changes in CO₂ and Climate to Equilibrium Responses of Net Primary Production and Carbon Storage** *Xiao et al.* June 1996
9. **CO₂ Emissions Limits: Economic Adjustments and the Distribution of Burdens** *Jacoby et al.* July 1997
10. **Modeling the Emissions of N₂O and CH₄ from the Terrestrial Biosphere to the Atmosphere** *Liu* Aug. 1996
11. **Global Warming Projections: Sensitivity to Deep Ocean Mixing** *Sokolov & Stone* September 1996
12. **Net Primary Production of Ecosystems in China and its Equilibrium Responses to Climate Changes**
Xiao et al. November 1996
13. **Greenhouse Policy Architectures and Institutions**
Schmalensee November 1996
14. **What Does Stabilizing Greenhouse Gas Concentrations Mean?** *Jacoby et al.* November 1996
15. **Economic Assessment of CO₂ Capture and Disposal**
Eckaus et al. December 1996
16. **What Drives Deforestation in the Brazilian Amazon?**
Pfaff December 1996
17. **A Flexible Climate Model For Use In Integrated Assessments** *Sokolov & Stone* March 1997
18. **Transient Climate Change and Potential Croplands of the World in the 21st Century** *Xiao et al.* May 1997
19. **Joint Implementation: Lessons from Title IV's Voluntary Compliance Programs** *Atkeson* June 1997
20. **Parameterization of Urban Subgrid Scale Processes in Global Atm. Chemistry Models** *Calbo et al.* July 1997
21. **Needed: A Realistic Strategy for Global Warming**
Jacoby, Prinn & Schmalensee August 1997
22. **Same Science, Differing Policies; The Saga of Global Climate Change** *Skolnikoff* August 1997
23. **Uncertainty in the Oceanic Heat and Carbon Uptake and their Impact on Climate Projections**
Sokolov et al. September 1997
24. **A Global Interactive Chemistry and Climate Model**
Wang, Prinn & Sokolov September 1997
25. **Interactions Among Emissions, Atmospheric Chemistry & Climate Change** *Wang & Prinn* Sept. 1997
26. **Necessary Conditions for Stabilization Agreements**
Yang & Jacoby October 1997
27. **Annex I Differentiation Proposals: Implications for Welfare, Equity and Policy** *Reiner & Jacoby* Oct. 1997
28. **Transient Climate Change and Net Ecosystem Production of the Terrestrial Biosphere**
Xiao et al. November 1997
29. **Analysis of CO₂ Emissions from Fossil Fuel in Korea: 1961-1994** *Choi* November 1997
30. **Uncertainty in Future Carbon Emissions: A Preliminary Exploration** *Webster* November 1997
31. **Beyond Emissions Paths: Rethinking the Climate Impacts of Emissions Protocols** *Webster & Reiner* November 1997
32. **Kyoto's Unfinished Business** *Jacoby et al.* June 1998
33. **Economic Development and the Structure of the Demand for Commercial Energy** *Judson et al.* April 1998
34. **Combined Effects of Anthropogenic Emissions and Resultant Climatic Changes on Atmospheric OH** *Wang & Prinn* April 1998
35. **Impact of Emissions, Chemistry, and Climate on Atmospheric Carbon Monoxide** *Wang & Prinn* April 1998
36. **Integrated Global System Model for Climate Policy Assessment: Feedbacks and Sensitivity Studies**
Prinn et al. June 1998
37. **Quantifying the Uncertainty in Climate Predictions**
Webster & Sokolov July 1998
38. **Sequential Climate Decisions Under Uncertainty: An Integrated Framework** *Valverde et al.* September 1998
39. **Uncertainty in Atmospheric CO₂ (Ocean Carbon Cycle Model Analysis)** *Holian* Oct. 1998 (*superseded* by No. 80)
40. **Analysis of Post-Kyoto CO₂ Emissions Trading Using Marginal Abatement Curves** *Ellerman & Decaux* Oct. 1998
41. **The Effects on Developing Countries of the Kyoto Protocol and CO₂ Emissions Trading**
Ellerman et al. November 1998
42. **Obstacles to Global CO₂ Trading: A Familiar Problem**
Ellerman November 1998
43. **The Uses and Misuses of Technology Development as a Component of Climate Policy** *Jacoby* November 1998
44. **Primary Aluminum Production: Climate Policy, Emissions and Costs** *Harnisch et al.* December 1998
45. **Multi-Gas Assessment of the Kyoto Protocol**
Reilly et al. January 1999
46. **From Science to Policy: The Science-Related Politics of Climate Change Policy in the U.S.** *Skolnikoff* January 1999
47. **Constraining Uncertainties in Climate Models Using Climate Change Detection Techniques**
Forest et al. April 1999
48. **Adjusting to Policy Expectations in Climate Change Modeling** *Shackley et al.* May 1999
49. **Toward a Useful Architecture for Climate Change Negotiations** *Jacoby et al.* May 1999
50. **A Study of the Effects of Natural Fertility, Weather and Productive Inputs in Chinese Agriculture**
Eckaus & Tso July 1999
51. **Japanese Nuclear Power and the Kyoto Agreement**
Babiker, Reilly & Ellerman August 1999
52. **Interactive Chemistry and Climate Models in Global Change Studies** *Wang & Prinn* September 1999
53. **Developing Country Effects of Kyoto-Type Emissions Restrictions** *Babiker & Jacoby* October 1999

Contact the Joint Program Office to request a copy. The Report Series is distributed at no charge.

REPORT SERIES of the MIT Joint Program on the Science and Policy of Global Change

54. **Model Estimates of the Mass Balance of the Greenland and Antarctic Ice Sheets** *Bugnion* Oct 1999
55. **Changes in Sea-Level Associated with Modifications of Ice Sheets over 21st Century** *Bugnion* October 1999
56. **The Kyoto Protocol and Developing Countries** *Babiker et al.* October 1999
57. **Can EPA Regulate Greenhouse Gases Before the Senate Ratifies the Kyoto Protocol?** *Bugnion & Reiner* November 1999
58. **Multiple Gas Control Under the Kyoto Agreement** *Reilly, Mayer & Harnisch* March 2000
59. **Supplementarity: An Invitation for Monopsony?** *Ellerman & Sue Wing* April 2000
60. **A Coupled Atmosphere-Ocean Model of Intermediate Complexity** *Kamenkovich et al.* May 2000
61. **Effects of Differentiating Climate Policy by Sector: A U.S. Example** *Babiker et al.* May 2000
62. **Constraining Climate Model Properties Using Optimal Fingerprint Detection Methods** *Forest et al.* May 2000
63. **Linking Local Air Pollution to Global Chemistry and Climate** *Mayer et al.* June 2000
64. **The Effects of Changing Consumption Patterns on the Costs of Emission Restrictions** *Lahiri et al.* Aug 2000
65. **Rethinking the Kyoto Emissions Targets** *Babiker & Eckaus* August 2000
66. **Fair Trade and Harmonization of Climate Change Policies in Europe** *Viguier* September 2000
67. **The Curious Role of "Learning" in Climate Policy: Should We Wait for More Data?** *Webster* October 2000
68. **How to Think About Human Influence on Climate** *Forest, Stone & Jacoby* October 2000
69. **Tradable Permits for Greenhouse Gas Emissions: A primer with reference to Europe** *Ellerman* Nov 2000
70. **Carbon Emissions and The Kyoto Commitment in the European Union** *Viguier et al.* February 2001
71. **The MIT Emissions Prediction and Policy Analysis Model: Revisions, Sensitivities and Results** *Babiker et al.* February 2001 (*superseded* by No. 125)
72. **Cap and Trade Policies in the Presence of Monopoly and Distortionary Taxation** *Fullerton & Metcalf* March '01
73. **Uncertainty Analysis of Global Climate Change Projections** *Webster et al.* Mar. '01 (*superseded* by No. 95)
74. **The Welfare Costs of Hybrid Carbon Policies in the European Union** *Babiker et al.* June 2001
75. **Feedbacks Affecting the Response of the Thermohaline Circulation to Increasing CO₂** *Kamenkovich et al.* July 2001
76. **CO₂ Abatement by Multi-fueled Electric Utilities: An Analysis Based on Japanese Data** *Ellerman & Tsukada* July 2001
77. **Comparing Greenhouse Gases** *Reilly et al.* July 2001
78. **Quantifying Uncertainties in Climate System Properties using Recent Climate Observations** *Forest et al.* July 2001
79. **Uncertainty in Emissions Projections for Climate Models** *Webster et al.* August 2001
80. **Uncertainty in Atmospheric CO₂ Predictions from a Global Ocean Carbon Cycle Model** *Holian et al.* September 2001
81. **A Comparison of the Behavior of AO GCMs in Transient Climate Change Experiments** *Sokolov et al.* December 2001
82. **The Evolution of a Climate Regime: Kyoto to Marrakech** *Babiker, Jacoby & Reiner* February 2002
83. **The "Safety Valve" and Climate Policy** *Jacoby & Ellerman* February 2002
84. **A Modeling Study on the Climate Impacts of Black Carbon Aerosols** *Wang* March 2002
85. **Tax Distortions and Global Climate Policy** *Babiker et al.* May 2002
86. **Incentive-based Approaches for Mitigating Greenhouse Gas Emissions: Issues and Prospects for India** *Gupta* June 2002
87. **Deep-Ocean Heat Uptake in an Ocean GCM with Idealized Geometry** *Huang, Stone & Hill* September 2002
88. **The Deep-Ocean Heat Uptake in Transient Climate Change** *Huang et al.* September 2002
89. **Representing Energy Technologies in Top-down Economic Models using Bottom-up Information** *McFarland et al.* October 2002
90. **Ozone Effects on Net Primary Production and Carbon Sequestration in the U.S. Using a Biogeochemistry Model** *Felzer et al.* November 2002
91. **Exclusionary Manipulation of Carbon Permit Markets: A Laboratory Test** *Carlén* November 2002
92. **An Issue of Permanence: Assessing the Effectiveness of Temporary Carbon Storage** *Herzog et al.* December 2002
93. **Is International Emissions Trading Always Beneficial?** *Babiker et al.* December 2002
94. **Modeling Non-CO₂ Greenhouse Gas Abatement** *Hyman et al.* December 2002
95. **Uncertainty Analysis of Climate Change and Policy Response** *Webster et al.* December 2002
96. **Market Power in International Carbon Emissions Trading: A Laboratory Test** *Carlén* January 2003
97. **Emissions Trading to Reduce Greenhouse Gas Emissions in the United States: The McCain-Lieberman Proposal** *Paltsev et al.* June 2003
98. **Russia's Role in the Kyoto Protocol** *Bernard et al.* Jun '03
99. **Thermohaline Circulation Stability: A Box Model Study** *Lucarini & Stone* June 2003
100. **Absolute vs. Intensity-Based Emissions Caps** *Ellerman & Sue Wing* July 2003
101. **Technology Detail in a Multi-Sector CGE Model: Transport Under Climate Policy** *Schafer & Jacoby* July 2003
102. **Induced Technical Change and the Cost of Climate Policy** *Sue Wing* September 2003
103. **Past and Future Effects of Ozone on Net Primary Production and Carbon Sequestration Using a Global Biogeochemical Model** *Felzer et al.* (revised) January 2004
104. **A Modeling Analysis of Methane Exchanges Between Alaskan Ecosystems and the Atmosphere** *Zhuang et al.* November 2003

Contact the Joint Program Office to request a copy. The Report Series is distributed at no charge.

REPORT SERIES of the MIT Joint Program on the Science and Policy of Global Change

105. **Analysis of Strategies of Companies under Carbon Constraint** Hashimoto January 2004
106. **Climate Prediction: The Limits of Ocean Models** Stone February 2004
107. **Informing Climate Policy Given Incommensurable Benefits Estimates** Jacoby February 2004
108. **Methane Fluxes Between Terrestrial Ecosystems and the Atmosphere at High Latitudes During the Past Century** Zhuang et al. March 2004
109. **Sensitivity of Climate to Diapycnal Diffusivity in the Ocean** Dalan et al. May 2004
110. **Stabilization and Global Climate Policy** Sarofim et al. July 2004
111. **Technology and Technical Change in the MIT EPPA Model** Jacoby et al. July 2004
112. **The Cost of Kyoto Protocol Targets: The Case of Japan** Paltsev et al. July 2004
113. **Economic Benefits of Air Pollution Regulation in the USA: An Integrated Approach** Yang et al. (revised) Jan. 2005
114. **The Role of Non-CO₂ Greenhouse Gases in Climate Policy: Analysis Using the MIT IGSM** Reilly et al. Aug. '04
115. **Future U.S. Energy Security Concerns** Deutch Sep. '04
116. **Explaining Long-Run Changes in the Energy Intensity of the U.S. Economy** Sue Wing Sept. 2004
117. **Modeling the Transport Sector: The Role of Existing Fuel Taxes in Climate Policy** Paltsev et al. November 2004
118. **Effects of Air Pollution Control on Climate** Prinn et al. January 2005
119. **Does Model Sensitivity to Changes in CO₂ Provide a Measure of Sensitivity to the Forcing of Different Nature?** Sokolov March 2005
120. **What Should the Government Do To Encourage Technical Change in the Energy Sector?** Deutch May '05
121. **Climate Change Taxes and Energy Efficiency in Japan** Kasahara et al. May 2005
122. **A 3D Ocean-Seaice-Carbon Cycle Model and its Coupling to a 2D Atmospheric Model: Uses in Climate Change Studies** Dutkiewicz et al. (revised) November 2005
123. **Simulating the Spatial Distribution of Population and Emissions to 2100** Asadoorian May 2005
124. **MIT Integrated Global System Model (IGSM) Version 2: Model Description and Baseline Evaluation** Sokolov et al. July 2005
125. **The MIT Emissions Prediction and Policy Analysis (EPPA) Model: Version 4** Paltsev et al. August 2005
126. **Estimated PDFs of Climate System Properties Including Natural and Anthropogenic Forcings** Forest et al. September 2005
127. **An Analysis of the European Emission Trading Scheme** Reilly & Paltsev October 2005
128. **Evaluating the Use of Ocean Models of Different Complexity in Climate Change Studies** Sokolov et al. November 2005
129. **Future Carbon Regulations and Current Investments in Alternative Coal-Fired Power Plant Designs** Sekar et al. December 2005
130. **Absolute vs. Intensity Limits for CO₂ Emission Control: Performance Under Uncertainty** Sue Wing et al. January 2006
131. **The Economic Impacts of Climate Change: Evidence from Agricultural Profits and Random Fluctuations in Weather** Deschenes & Greenstone January 2006
132. **The Value of Emissions Trading** Webster et al. Feb. 2006
133. **Estimating Probability Distributions from Complex Models with Bifurcations: The Case of Ocean Circulation Collapse** Webster et al. March 2006
134. **Directed Technical Change and Climate Policy** Otto et al. April 2006
135. **Modeling Climate Feedbacks to Energy Demand: The Case of China** Asadoorian et al. June 2006
136. **Bringing Transportation into a Cap-and-Trade Regime** Ellerman, Jacoby & Zimmerman June 2006
137. **Unemployment Effects of Climate Policy** Babiker & Eckaus July 2006
138. **Energy Conservation in the United States: Understanding its Role in Climate Policy** Metcalf Aug. '06
139. **Directed Technical Change and the Adoption of CO₂ Abatement Technology: The Case of CO₂ Capture and Storage** Otto & Reilly August 2006
140. **The Allocation of European Union Allowances: Lessons, Unifying Themes and General Principles** Buchner et al. October 2006
141. **Over-Allocation or Abatement? A preliminary analysis of the EU ETS based on the 2006 emissions data** Ellerman & Buchner December 2006
142. **Federal Tax Policy Towards Energy** Metcalf Jan. 2007
143. **Technical Change, Investment and Energy Intensity** Kratena March 2007
144. **Heavier Crude, Changing Demand for Petroleum Fuels, Regional Climate Policy, and the Location of Upgrading Capacity** Reilly et al. April 2007
145. **Biomass Energy and Competition for Land** Reilly & Paltsev April 2007
146. **Assessment of U.S. Cap-and-Trade Proposals** Paltsev et al. April 2007
147. **A Global Land System Framework for Integrated Climate-Change Assessments** Schlosser et al. May 2007
148. **Relative Roles of Climate Sensitivity and Forcing in Defining the Ocean Circulation Response to Climate Change** Scott et al. May 2007
149. **Global Economic Effects of Changes in Crops, Pasture, and Forests due to Changing Climate, CO₂ and Ozone** Reilly et al. May 2007
150. **U.S. GHG Cap-and-Trade Proposals: Application of a Forward-Looking Computable General Equilibrium Model** Gurgel et al. June 2007
151. **Consequences of Considering Carbon/Nitrogen Interactions on the Feedbacks between Climate and the Terrestrial Carbon Cycle** Sokolov et al. June 2007
152. **Energy Scenarios for East Asia: 2005-2025** Paltsev & Reilly July 2007
153. **Climate Change, Mortality, and Adaptation: Evidence from Annual Fluctuations in Weather in the U.S.** Deschênes & Greenstone August 2007

Contact the Joint Program Office to request a copy. The Report Series is distributed at no charge.

REPORT SERIES of the MIT Joint Program on the Science and Policy of Global Change

- 154. Modeling the Prospects for Hydrogen Powered Transportation Through 2100** *Sandoval et al.* February 2008
- 155. Potential Land Use Implications of a Global Biofuels Industry** *Gurgel et al.* March 2008
- 156. Estimating the Economic Cost of Sea-Level Rise** *Sugiyama et al.* April 2008
- 157. Constraining Climate Model Parameters from Observed 20th Century Changes** *Forest et al.* April 2008
- 158. Analysis of the Coal Sector under Carbon Constraints** *McFarland et al.* April 2008
- 159. Impact of Sulfur and Carbonaceous Emissions from International Shipping on Aerosol Distributions and Direct Radiative Forcing** *Wang & Kim* April 2008
- 160. Analysis of U.S. Greenhouse Gas Tax Proposals** *Metcalfe et al.* April 2008
- 161. A Forward Looking Version of the MIT Emissions Prediction and Policy Analysis (EPPA) Model** *Babiker et al.* May 2008
- 162. The European Carbon Market in Action: Lessons from the first trading period** Interim Report *Convery, Ellerman, & de Perthuis* June 2008
- 163. The Influence on Climate Change of Differing Scenarios for Future Development Analyzed Using the MIT Integrated Global System Model** *Prinn et al.* September 2008
- 164. Marginal Abatement Costs and Marginal Welfare Costs for Greenhouse Gas Emissions Reductions: Results from the EPPA Model** *Holak et al.* November 2008
- 165. Uncertainty in Greenhouse Emissions and Costs of Atmospheric Stabilization** *Webster et al.* November 2008
- 166. Sensitivity of Climate Change Projections to Uncertainties in the Estimates of Observed Changes in Deep-Ocean Heat Content** *Sokolov et al.* November 2008
- 167. Sharing the Burden of GHG Reductions** *Jacoby et al.* November 2008
- 168. Unintended Environmental Consequences of a Global Biofuels Program** *Melillo et al.* January 2009
- 169. Probabilistic Forecast for 21st Century Climate Based on Uncertainties in Emissions (without Policy) and Climate Parameters** *Sokolov et al.* January 2009
- 170. The EU's Emissions Trading Scheme: A Proto-type Global System?** *Ellerman* February 2009
- 171. Designing a U.S. Market for CO₂** *Parsons et al.* February 2009
- 172. Prospects for Plug-in Hybrid Electric Vehicles in the United States & Japan: A General Equilibrium Analysis** *Karplus et al.* April 2009
- 173. The Cost of Climate Policy in the United States** *Paltsev et al.* April 2009
- 174. A Semi-Empirical Representation of the Temporal Variation of Total Greenhouse Gas Levels Expressed as Equivalent Levels of Carbon Dioxide** *Huang et al.* June 2009
- 175. Potential Climatic Impacts and Reliability of Very Large Scale Wind Farms** *Wang & Prinn* June 2009
- 176. Biofuels, Climate Policy and the European Vehicle Fleet** *Gitiaux et al.* August 2009
- 177. Global Health and Economic Impacts of Future Ozone Pollution** *Selin et al.* August 2009
- 178. Measuring Welfare Loss Caused by Air Pollution in Europe: A CGE Analysis** *Nam et al.* August 2009
- 179. Assessing Evapotranspiration Estimates from the Global Soil Wetness Project Phase 2 (GSWP-2) Simulations** *Schlosser and Gao* September 2009
- 180. Analysis of Climate Policy Targets under Uncertainty** *Webster et al.* September 2009
- 181. Development of a Fast and Detailed Model of Urban-Scale Chemical and Physical Processing** *Cohen & Prinn* October 2009
- 182. Distributional Impacts of a U.S. Greenhouse Gas Policy: A General Equilibrium Analysis of Carbon Pricing** *Rausch et al.* November 2009
- 183. Canada's Bitumen Industry Under CO₂ Constraints** *Chan et al.* January 2010
- 184. Will Border Carbon Adjustments Work?** *Winchester et al.* February 2010
- 185. Distributional Implications of Alternative U.S. Greenhouse Gas Control Measures** *Rausch et al.* June 2010
- 186. The Future of U.S. Natural Gas Production, Use, and Trade** *Paltsev et al.* June 2010
- 187. Combining a Renewable Portfolio Standard with a Cap-and-Trade Policy: A General Equilibrium Analysis** *Morris et al.* July 2010
- 188. On the Correlation between Forcing and Climate Sensitivity** *Sokolov* August 2010