

GENERAL PHYSICS



# I. MOLECULAR BEAMS\*

## Academic and Research Staff

Prof. J. R. Zacharias  
Prof. J. G. King  
Prof. H. H. Brown

Dr. J. W. Coleman  
Dr. G. A. Herzlinger  
Dr. E. H. Jacobsen  
Dr. M. G. R. Thomson

Dr. J. C. Weaver  
J. H. Abrams  
F. J. O'Brien

## Graduate Students

J. E. Bergmann  
S. A. Cohen  
W. B. Davis

H. F. Dylla  
J. A. Jarrell  
S. R. Jost  
D. G. Lysy

D. G. Payan  
N. D. Punsky  
B. R. Silver

### A. MULTIOPTICAL BENCH

We have designed a general-purpose multioptical bench (Fig. I-1) for use in several areas of our research. The first use will be for studies of electron transparent foils as correctors for spherical aberration in electron optical lenses.

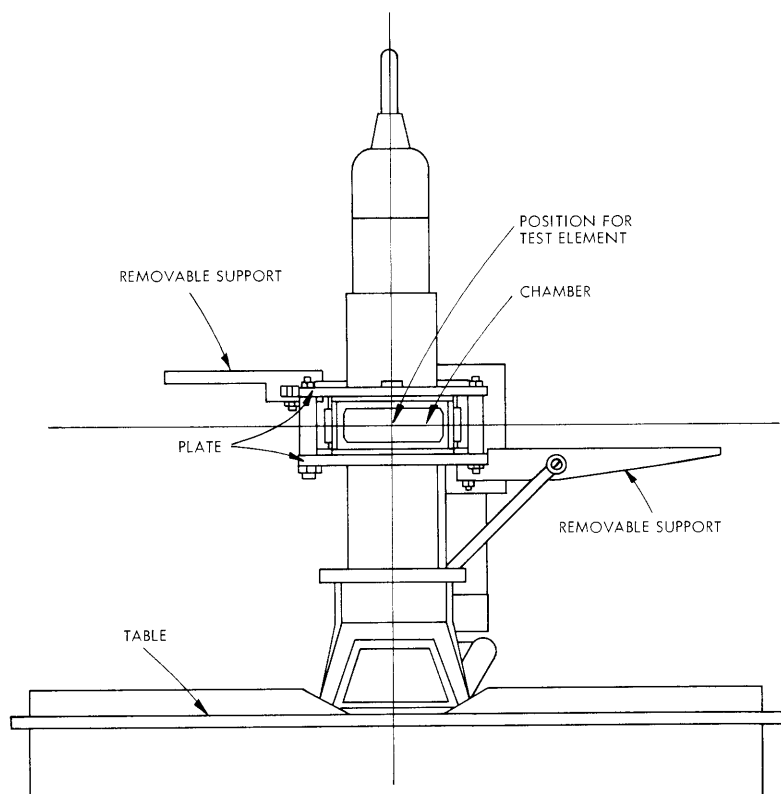


Fig. I-1.  
Multioptical bench.

---

\*This work was supported by the Joint Services Electronics Programs (U. S. Army, U. S. Navy, and U. S. Air Force) under Contract DAAB07-71-C-0300, and by the National Institutes of Health (Grant 5-SO5-FRO7046-06).

(I. MOLECULAR BEAMS)

The element for test or observation is placed at the center in a stainless-steel chamber clamped between plates that are spliced into an electron optical column. The chamber has seven access ports, and this allows experiments involving electron optics, light optics, and molecular optics to be undertaken independently or in combination.

J. W. Coleman