



Tracking COVID Compliance in a Medical Library: An Observational Study

Laura Menard, MLS

Hello!

Laura Menard, MLS

Ruth Lilly Medical Library

You can find me at
[@LMLibrarian](#)



1. Background





Background

- ▶ The IU School of Medicine is the largest medical school in the nation
- ▶ 9 campuses, hundreds of UGME students
- ▶ Campus re-opened in the summer of 2020 with a mask mandate

Enforcement Efforts

Library

Library policy states that all users must wear a mask while using the library. Staff and faculty remind users of this policy as necessary.

Administration

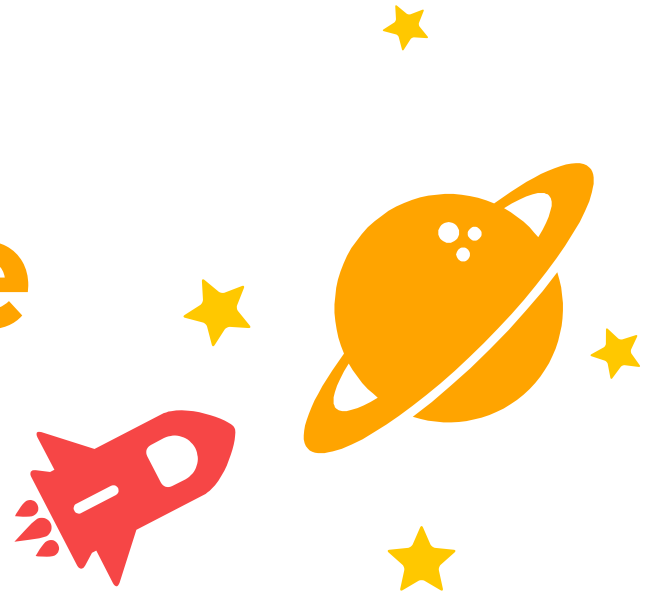
All students on the Indiana University campuses were required to sign an attestation that they would adhere to COVID-19 protocols while on campus.

Government

A mask mandate was put in place in Marion County in Spring of 2020. As of May 2021, the mask mandate is still in effect.

Compliance

We decided to track patron compliance with the campus mask mandate in Fall of 2020.





We Tracked Two Measures

Masks

Students were counted as non-compliant if they were not wearing a mask or wearing a mask incorrectly.

Distancing

Students were expected to maintain 6' of distance, according to floor and desk markings.

1. Results



Compliance By Month

	December	January	February	March	April
Mask	96%	97%	96%	96%	95%
Distancing	100%	99%	99%	98%	98%



Discussion

- ▶ Compliance was relatively high
- ▶ When users were not in compliance with policy, they were reminded
- ▶ We continue to work with school administration to make the library and campus a safe place to work and study



Thank You!