

Neuro imaging

Presentation

A 50 year-old gentleman of otherwise excellent health presents with recent onset of left upper limb weakness and left facial nerve palsy. These are selected MR images.

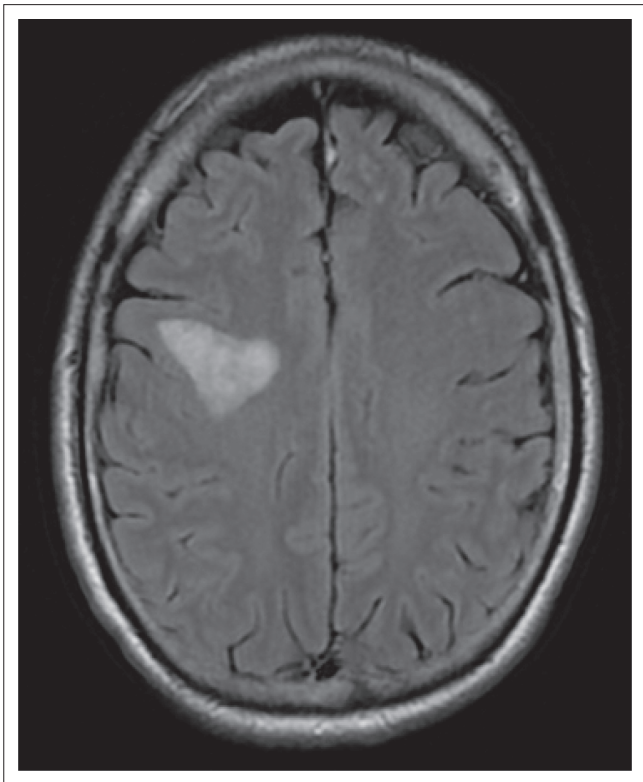


FIGURE 1: Axial FLAIR MR image.

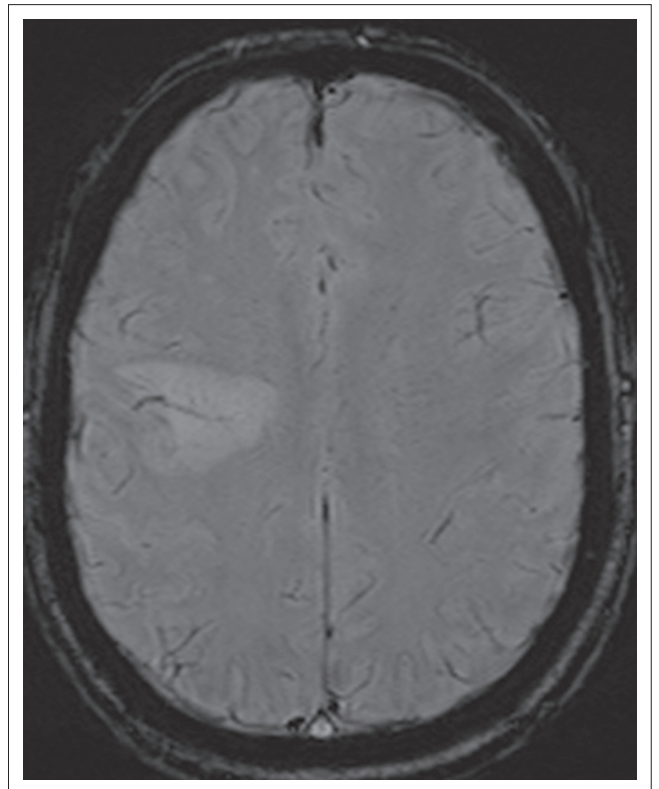


FIGURE 2: Axial SWI MR image.

Read online:



Scan this QR code with your smart phone or mobile device to read online.

Authors: Shalendra K. Misser¹, Thami Z. Mngoma¹

Affiliation: ¹Lake Smit and Partners Inc, Durban, South Africa

Correspondence to: Shalendra Misser

Email: misser@lakesmit.co.za

Postal address: Private Bag X08, Overport 4067, Durban, South Africa

How to cite this article: Misser, SK, Mngoma, TZ. Neuro imaging. S Afr J Rad. 2015;19(1); Art. #815, 3 pages. <http://dx.doi.org/10.4102/sajr.v19i1.815>

Copyright: © 2015. The Authors. Licensee: AOSIS OpenJournals. This work is licensed under the Creative Commons Attribution License.

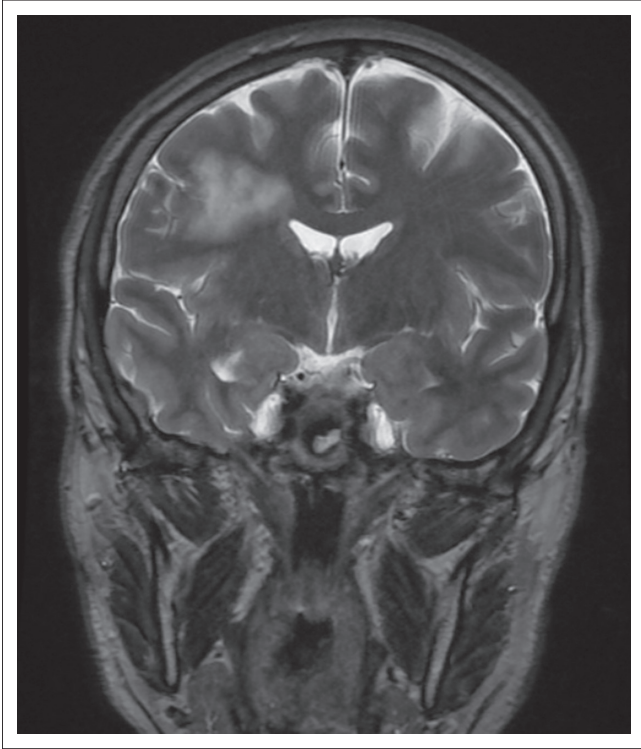


FIGURE 3: Coronal T2-weighted MR image.

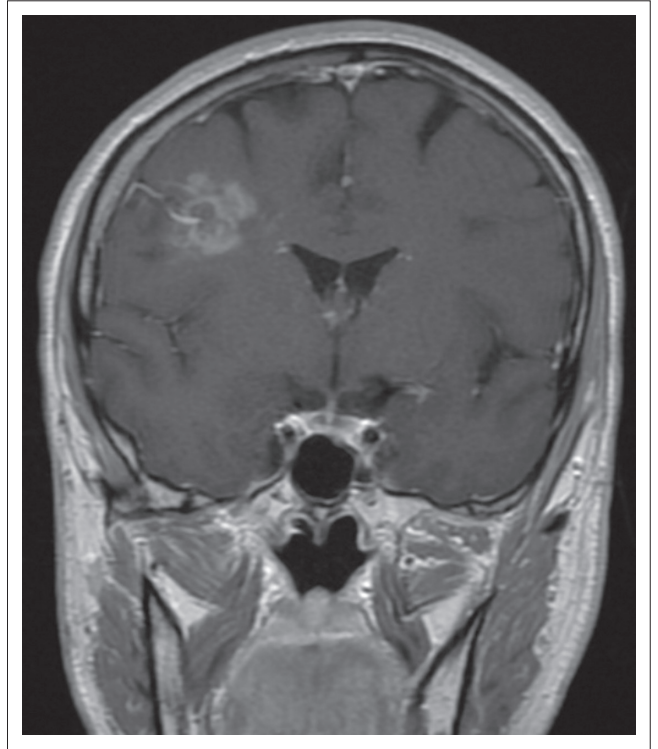


FIGURE 4: Coronal post contrast T1-weighted MR image.

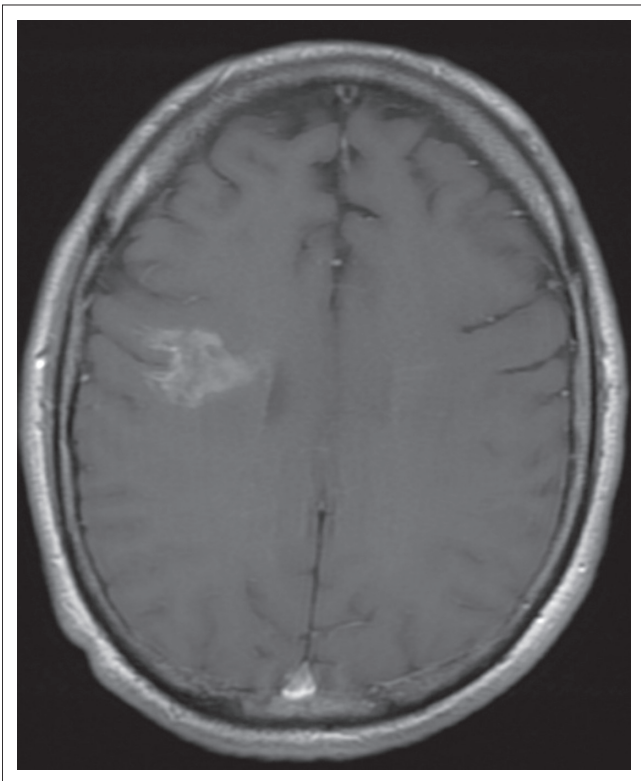


FIGURE 5: Axial post contrast T1-weighted MR image

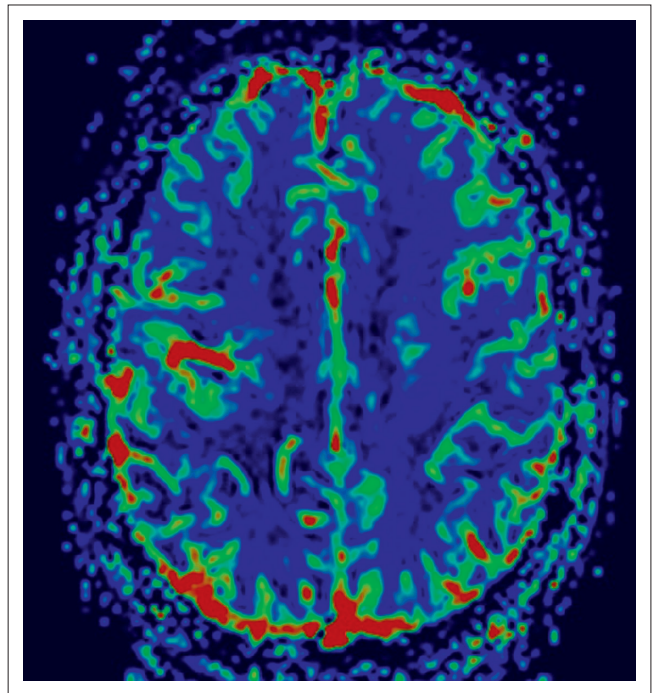


FIGURE 6: Axial rCBV MR Perfusion image.

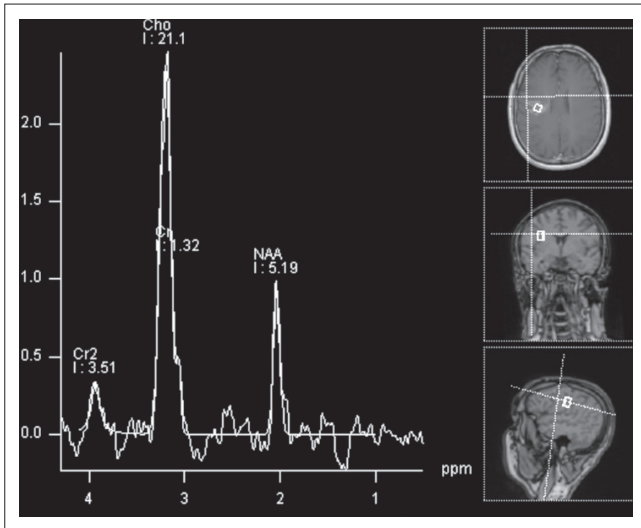


FIGURE 7: MR Spectroscopy image obtained at TE 135ms.

Describe the relevant imaging findings and formulate the most appropriate clinical diagnosis. Please submit your response to missier@lakesmit.co.za not later than 30 September 2015. The winning respondent will receive a R1000 award from the RSSA. A detailed diagnosis and discussion will be presented in the next issue of the SAJR.