

All learning is local: Multi-agent learning in global reward games

Yu-Han Chang, Tracey Ho, Leslie Pack Kaelbling
Massachusetts Institute of Technology

Abstract—In large multiagent games, partial observability, coordination, and credit assignment persistently plague attempts to design good learning algorithms. We provide a simple and efficient algorithm that in part uses a linear system to model the world from a single agent’s limited perspective, and takes advantage of Kalman filtering to allow an agent to construct a good training signal and effectively learn a near-optimal policy in a wide variety of settings. A sequence of increasingly complex empirical tests verifies the efficacy of this technique.

Index Terms—Kalman filtering, multi-agent systems, Q-learning, reinforcement learning.

I. INTRODUCTION

Learning in a single-agent stationary-environment setting can be a hard problem, but relative to the multi-agent learning problem, it is easy. When multiple learning agents are introduced into the system, one of the key elements of the usual reinforcement learning framework – the Markov property of the state space – fails, because the changing behavior of the other agents changes the dynamics of the world. There are several different approaches to overcoming this problem, including tools and concepts from game theory and partially observable Markov decision processes, but none have proven to be effective in general. We need a different approach, and in this paper, we present a simple abstraction and reward filtering technique that allows computationally efficient and robust learning in large multi-agent environments where other methods may fail or become intractable.

In many multi-agent settings, our learning agent does not have a full view of the world. At the very least, it usually does not have a complete representation of the internal states of the other agents. Oftentimes it cannot see the world state of agents that are far away or otherwise obscured. This partial observability creates problems when the agent begins to learn about the world, since it cannot see how the other agents are manipulating the environment and thus it cannot ascertain the true world state. It may be appropriate to model the observable world as a non-stationary Markov Decision Process (MDP). A

This work was supported in part by the Singapore-MIT Alliance and a Graduate Research Fellowship from the United States National Science Foundation.

Yu-Han Chang is with the Computer Science and Artificial Intelligence Laboratory (CSAIL) at the Massachusetts Institute of Technology, Cambridge, MA 02139 (phone: 1-617-253-1611, email: ychang@csail.mit.edu).

Tracey Ho is with the Laboratory for Information and Decision Systems (LIDS) at the Massachusetts Institute of Technology, Cambridge, MA 02139 (email: trace@mit.edu).

Leslie Pack Kaelbling is with the Computer Science and Artificial Intelligence Laboratory (CSAIL) at the Massachusetts Institute of Technology, Cambridge, MA 02139 (email: lpk@ai.mit.edu).

separate problem arises when we train multiple agents using a global reward signal. This is often the case in cooperative games in which all the agents contribute towards attaining some common goal. Even with full observability, the agents would need to overcome a credit assignment problem, since it may be difficult to ascertain which agents were responsible for creating good reward signals. If we cannot even observe what the other agents are doing, how can we begin to reason about their role in obtaining the current reward? Our solution relies on its simplicity.

Consider an agent in an MDP, learning to maximize a reward that is a function of its observable state and/or actions. There are many well-studied learning techniques to do this [Sutton and Barto, 1999]. The effects of non-stationarity, partial observability, and global rewards can be thought of as replacing this true reward signal with an alternate signal that is a non-stationary function of the original reward. Think of the difference between learning with a personal coach and learning in a large class where feedback is given only on collective performance. This causes problems for an agent that is trying to use the reward signal to learn an optimal policy for this environment. Ideally the agent can recover the original personal reward signal and learn using that signal rather than the global reward signal.

We show that in many naturally arising situations of this kind, an effective approach is for an individual agent to model the observed global reward signal as the sum of its own contribution (which is the personal reward signal on which it should base its learning) and a random Markov process (which is the amount of the observed reward due to other agents or external factors). With such a simple model, we can estimate both of these quantities efficiently using an online Kalman filtering process. Many external sources of reward (which could be regarded as noise) can be modeled as or approximated by a random Markov process, so this technique promises broad applicability. This approach is more robust than trying to learn directly from the global reward, allowing agents to learn and converge faster to an optimal or near-optimal policy, sometimes even in domains where convergence was once elusive.

II. RELATED WORK

This type of problem has been approached in the past using a variety of techniques. For slowly varying environments, Szita et al. [2002] provide a specialization of Littman and Szepesvári’s [1996] techniques for generalized MDPs, showing that Q -learning will converge as long as the variation per

time step is small enough. In our case, we attempt to tackle problems where the variation is much larger. Choi et al. [1999] investigate models in which there are “hidden modes”. When the environment switches between modes, all the rewards may be altered. This works if we have fairly detailed domain knowledge about the types of modes we expect to encounter. For variation produced by the actions of other agents in the world, or for truly unobservable environmental changes, this technique would not work as well. Auer et al. [1995] show that in arbitrarily varying environments, we can craft a regret-minimizing strategy for playing repeated games. Mannor and Shimkin [2001] extend these results to certain stochastic games. These results are largely theoretical in nature and can yield fairly loose performance bounds, especially in stochastic games. Rather than filtering the rewards as we will do, Ng et al. [1999] show that a potential function can be used to shape the rewards without affecting the learned policy while possibly speeding up convergence. This assumes that learning would converge in the first place, though possibly taking a very long time. Moreover, it requires domain knowledge to craft this shaping function.

The innovative aspect of our approach is to consider the reward signal as merely a signal that is correlated with our true learning signal. We propose a model that captures the relationship between the true reward and the noisy rewards in a wide range of problems. Thus, without assuming much additional domain knowledge, we can use filtering methods to recover the underlying true reward signal from the noisy observed global rewards.

III. MATHEMATICAL MODEL

The agent assumes that the world possesses one or more unobservable state variables that affect the global reward signal. These unobservable states may include the presence of other agents or changes in the environment. Each agent models the effect of these unobservable state variables on the global reward as an additive noise process b_t that evolves according to $b_{t+1} = b_t + z_t$, where z_t is a zero-mean Gaussian random variable with variance σ_w . The global reward that it observes if it is in state i at time t is $g_t = r(i) + b_t$, where r is a vector containing the ideal training rewards $r(i)$ received by the agent at state i . The standard model that describes such a linear system is:

$$\begin{aligned} g_t &= Cx_t + v_t, & v_t &\sim N(0, \Sigma_2) \\ x_t &= Ax_{t-1} + w_t, & w_t &\sim N(0, \Sigma_1) \end{aligned}$$

In our case, we desire estimates of $x_t = [r_t^T \ b_t]^T$. We impart our domain knowledge into the model by specifying the estimated variance and covariance of the components of x_t . In our case, we set $\Sigma_2 = 0$ since we assume no observation noise when we experience rewards; $\Sigma_1(j, j) = 0, j \neq |S| + 1$, since the rewards are fixed and do not evolve over time; $\Sigma_1(|S| + 1, |S| + 1) = \sigma_w$ since the noise term evolves with variance σ_w . The system matrix is $A = I$, and the observation matrix is $C = [0 \ 0 \dots 1_i \dots 0 \ 0 \ 1]$ where the 1_i occurs in the i^{th} position when our observed state $s = i$.

Kalman filters [Kalman, 1960] are Bayes optimal, minimum mean-squared-error estimators for linear systems with Gaussian noise. The agent applies the following causal Kalman filtering equations at each time step to obtain maximum likelihood estimates for b and the individual rewards $r(i)$ for each state i given all previous observations. First, the estimate \hat{x} and its covariance matrix P are updated in time based on the linear system model:

$$\hat{x}'_t = A\hat{x}_{t-1} \quad (1)$$

$$P'_t = AP_{t-1}A^T + \Sigma_1 \quad (2)$$

Then these a priori estimates are updated using the current time period’s observation g_t :

$$K_t = P'_t C^T (C P'_t C^T + \Sigma_2)^{-1} \quad (3)$$

$$\hat{x}_t = \hat{x}'_t + K_t(g_t - C\hat{x}'_t) \quad (4)$$

$$P_t = (I - K_t C) P'_t \quad (5)$$

As shown, the Kalman filter also gives us the estimation error covariance P_t , from which we know the variance of the estimates for r and b . We can also compute the likelihood of observing g_t given the model and all the previous observations. This will be handy for evaluating the fit of our model, if needed. We could also create more complicated models if our domain knowledge shows that a different model would be more suitable. For example, if we wanted to capture the effect of an upward bias in the evolution of the noise process (perhaps to model the fact that all the agents are learning and achieving higher rewards), we could add another variable u , initialized such that $u_0 > 0$, modifying x to be $x = [r^T \ b \ u]^T$, and changing our noise term update equation to $b_{t+1} = b_t + u_t + w_t$. In other cases, we might wish to use non-linear models that would require more sophisticated techniques such as extended Kalman filters.

For the learning mechanism, we use a simple tabular Q -learning algorithm [Sutton and Barto, 1999], since we wish to focus our attention on the reward signal problem. Q -learning keeps a “ Q -value” for each state-action pair, and proceeds using the following update rule:

$$Q_t(s, a) = (1 - \alpha)Q_{t-1}(s, a) + \alpha(r + \gamma \min_{a'} Q_t(s', a')), \quad (6)$$

where $0 < \alpha < 1$ is parameter that controls the learning rate, r is the reward signal used for learning at time t given s and a , $0 < \gamma \leq 1$ is the discount factor, and s , a , and s' are the current state, action, and next state of the agent, respectively. Under fairly general conditions, in a stationary MDP, Q -learning converges to the optimal policy, expressed as

$$\pi(s) = \operatorname{argmax}_a Q(s, a) \ .$$

IV. THE FILTERING LEARNING AGENT

Like any good student, the filtering learning agent chooses to accept well-deserved praise from its teacher and ignore over-effusive rewards. The good student does not update his behavior at every time step, but only upon observing relevant rewards. Getting an A in a class with an easy professor should not convince me that I have good study habits! The question

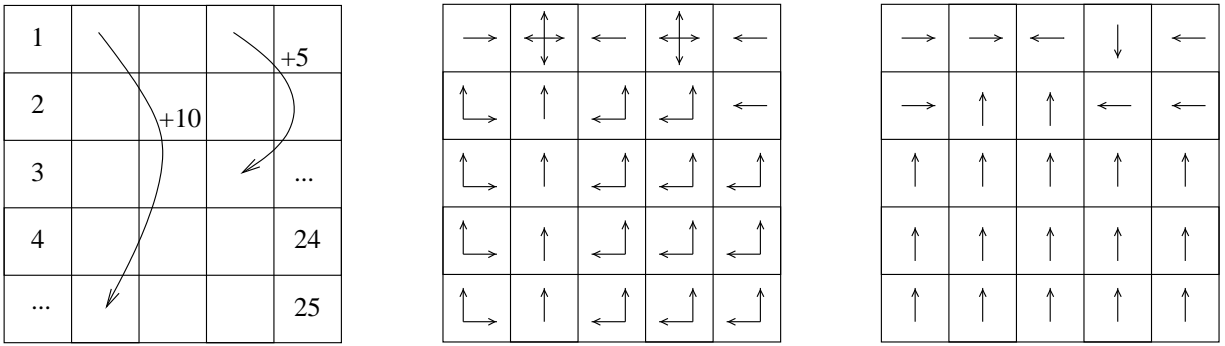


Fig. 1. This shows the dynamics of our 5x5 grid world domain. The states correspond to the grid locations, numbered 1,2,3,4,...,24,25. Actions move the agent N,S,E, or W, except in states 6 and 16, where any action takes the agent to state 10 and 18, respectively, shown by the curved arrows in the figure at left. The optimal policy is shown at center, where multiple arrows at one state denotes indifference between the possibilities. A policy learned by our filtering agent is shown at right.

remains: How does an agent decide upon the relevance of the rewards it sees? We have proposed a model in which undeserved rewards over time are captured by a Markov random process b . Using observations from previous states and actions, an agent can approach this question from two perspectives. In the first, each time the agent visits a particular state s , it should gain a better sense of the evolution of the random variable b between its last visit and its current visit. Secondly, given an estimate of b_t during a visit to s at time t , it has a better idea of the value of b_{t+1} when it visits s' at time $t+1$. These are the ideas captured by the causal Kalman filter, which only uses the history of past states and observations to provides estimates of $r(i)$ and b .

The agent follows this simple algorithm:

1. From initial state s_0 , take some action a , transition to state i , and receive reward signal g_0 . Initialize $\hat{x}_0(i_0) = g_0$ and $\hat{x}_0(|S| + 1) = b_0 = 0$, since $b_0 = 0$.
2. Perform a Kalman update using equations 1-5 to compute the current vector of estimates \hat{x} , which includes a component that is the reward estimate $\hat{r}(s_0)$, which will simply equal g this time.
3. From the current state i at time t , take another action with some mix of exploration and exploitation; transition to state j , receiving reward signal g_t . If this is the first visit to state i , initialize $\hat{x}_t(i) = g_t - \hat{b}_{t-1}$.
4. Perform a Kalman update using equations 1-5 to compute the current vector of estimates \hat{x} , which includes a component that is the reward estimate $\hat{r}(i)$.
5. Update the Q -table using $\hat{r}(i)$ in place of r in equation 6; return to Step 3.

The advantage of the Kalman filter is that it requires a constant amount of memory – at no time does it need a full history of states and observations. Instead, it computes a sufficient statistic during each update, x and P , which consists of the maximum likelihood estimate of r and b , and the covariance matrix of this estimate. Thus, we can run this algorithm online as we learn, and its speed does not deteriorate over time.

V. EMPIRICAL RESULTS

If the world dynamics match the linear model we provide the Kalman filter, then certainly this method will work well. The interesting question concerns situations in which the actual dynamics are clearly different from the model, and whether this filtering agent will still learn the good, or even optimal, policies in such cases. This section examines the efficacy of the filtering learning agent in several different domains: (1) a single agent domain in which the linear system describes the world perfectly, (2) a single agent domain where the noise is manually adjusted without following the model, (3) a multi-agent setting in which the noise term is meant to encapsulate presence of other agents in the environment, and (4) a more complicated multi-agent setting that provides an abstraction of a mobile ad-hoc networking domain in which mobile agent nodes are trying to maximize total network performance.

For ease of exposition, all the domains we use are variants of the basic grid-world domain shown in Figure 1 and described in various reinforcement learning texts such as [Sutton and Barto, 1999]. The agent is able to move North, South, East, or West from its present position, and most transitions give the agent zero reward, except all actions from state 6 move the agent directly to state 10 with a reward of 20, and all actions from state 16 move the agent directly to state 18 with a reward of 10. Bumps into the wall cost the agent -1 in reward and move the agent nowhere. We use a discount factor of 0.9.

To demonstrate the basic feasibility of our filtering method, we first create a domain that follows the linear model of the world given in Section III perfectly. That is, in each time step, a single agent receives its true reward plus some noise term that evolves as a Markov random process. To achieve this, we simply add a noise term to the grid world domain given in Figure 1. As shown in Figure 2, an agent acting in this domain will receive a large range of reward values due to the evolving noise term. In the example given, sometimes this value ranges as high as 250 even though the maximum reward in the grid world is 20 – the noise term contributes 230 to the reward signal! A standard Q -learning agent does not stand a chance at learning anything useful using this reward signal. However, the filtering agent can recover the true reward signal

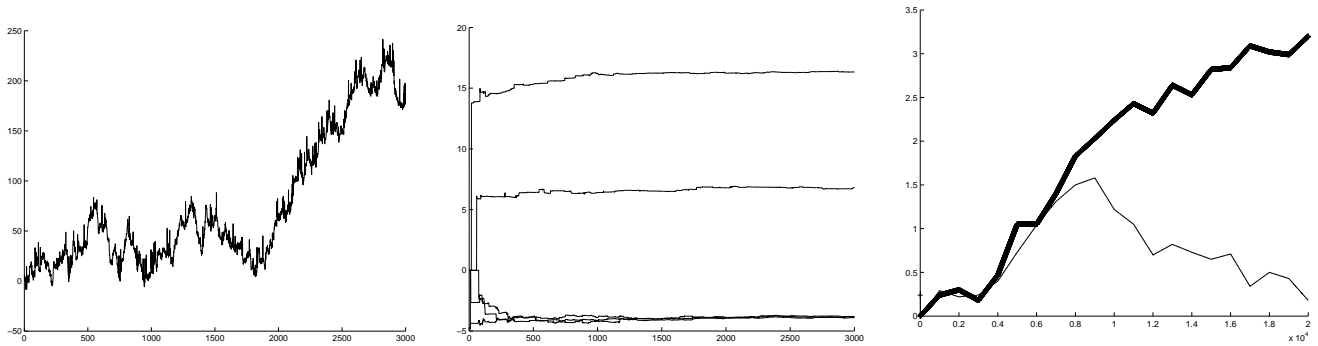


Fig. 2. (Left) As the agent is attempting to learn, the reward signal value (y-axis) changes dramatically over time (x-axis) due to the noise term. While the true range of rewards in this grid world domain only falls between 0 and 20, the noisy reward signal ranges from -10 to 250, as shown in the graph at left. (Center) Given this noisy signal, the filtering agent is still able to learn the true underlying rewards, converging to the correct relative values over time, as shown in the middle graph. (Right) The filtering learning agent (bold line) accrues higher rewards over time than the ordinary Q -learner (thin line), since it is able to converge to an optimal policy whereas the non-filtering Q -learner remains confused.

from this noisy signal and use that to learn. Figure 2 shows that the filtering agent can learn the underlying reward signals, converging to these values relatively quickly. The graph to the right compares the performance of the filtering learner to the normal Q -learner, showing a clear performance advantage.

The observant reader may note that the learned rewards do not match the true rewards specified by the grid world. Specifically, they are offset by about -4. Instead of mostly 0 rewards at each state, the agent has concluded that most states produce reward of -4. Correspondingly, state 6 now produces a reward of about 16 instead of 20. Since Q -learning will still learn the correct optimal policy subject to scaling or translation of the rewards, this is not a problem. This oddity is due to the fact that our model has a degree of freedom in the noise term b . Depending on the initial guesses of our algorithm, the estimates for the rewards may be biased. If most of initial guesses for the rewards underestimated the true reward, then the learned value will be correspondingly lower than the actual true value. In fact, all the learned values will be correspondingly lower by the same amount.

To further test our filtering technique, we next evaluate its performance in a domain that does not conform to our noise model perfectly, but which is still a single agent system. Instead of an external reward term that evolves according to a Gaussian noise process, we adjust the noise manually, introducing positive and negative swings in the reward signal values at arbitrary times. The results are similar to those in the perfectly modeled domain, showing that the filtering method is fairly robust.

The most interesting case occurs when the domain noise is actually caused by other agents learning in the environment. This noise will not evolve according to a Gaussian process, but since the filtering method is fairly robust, we might still expect it to work. If there are enough other agents in the world, then the noise they collectively generate may actually tend towards Gaussian noise. Here we focus on smaller cases where there are 6 or 10 agents operating in the environment. We modify the grid world domain to include multiple simultaneously-acting agents, whose actions do not interfere with each other, but whose reward signal now consists of the sum of all the agents'

personal rewards, as given in the basic single agent grid world of Figure 1.

We again compare the performance of the filtering learner to the ordinary Q -learning algorithm. As shown in Figure 3, most of the filtering learners quickly converge to the optimal policy. Three of the 10 agents converge to a suboptimal policy that produces slightly lower average rewards. However, this artifact is largely due to our choice of exploration rate, rather than a large error in the estimated reward values. The standard Q -learning algorithm also produces decent results at first. Approximately half of the agents find the optimal policy, while the other half are still exploring and learning. An interesting phenomenon occurs when these other agents finally find the optimal policy and begin receiving higher rewards. Suddenly the performance drops drastically for the agents who had found the optimal policy first. Though seemingly strange, this provides a perfect example of the behavior that motivates this paper. When the other agents learn an optimal policy, they begin affecting the global reward, contributing some positive amount rather than a consistent zero. This changes the world dynamics for the agents who had already learned the optimal policy and causes them to “unlearn” their good behavior.

The unstable dynamics of the Q -learners could be solved if the agents had full observability, and we could learn using the joint actions of all the agents, as in the work of Claus and Boutilier [1998]. However, since our premise is that agents have only a limited view of the world, the Q -learning agents will only exhibit convergence to the optimal policy if they converge to the optimal policy simultaneously. This may take a prohibitively long time, especially as the number of agents grows.

VI. APPLICATION TO MOBILIZED AD-HOC NETWORKING

Finally, we apply our filtering method to a more realistic domain. Mobilized ad-hoc networking provides an interesting real-world environment that illustrates the importance of reward filtering due to its high degree of partial observability and a reward signal that depends on the global state. In this domain, there are a number of mobile nodes whose task is to move in such a way as to optimize the connectivity

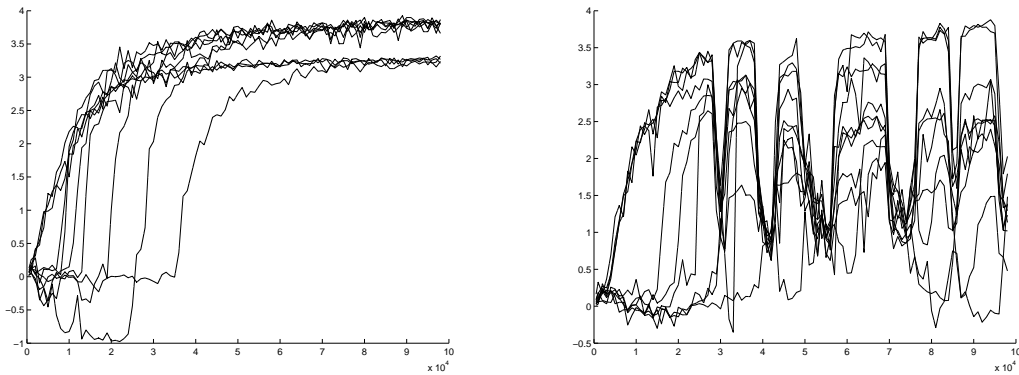


Fig. 3. (Left) Filtering agents are able to distinguish their personal rewards from the global reward noise, and thus able to learn optimal policies and maximize their average reward over time in a ten-agent grid-world domain. (Right) In contrast, ordinary Q -learning agents do not process the global reward signal and can become confused as the environment changes around them. Graphs show average rewards (y-axis) within 1000-period windows for each of the 10 agents in a typical run of 10000 time periods (x-axis).

(performance) of the network. Chang et al. [2003] cast this as a reinforcement learning problem. As the nodes move around, connections can be formed between nodes that are within range of one another. These connections allow packets to be transmitted between various sources and receivers scattered among the nodes.

The most interesting aspect of this domain is that the nodes are limited to having only local knowledge of their immediate neighboring grid locations (rather than the numbered state locations as in the original grid world), and thus do not know their absolute location on the grid. Moreover, they have no idea where the other nodes are located unless they happen to be within the local viewable area. This partial observability, combined with the global nature of the reward signal (the network connectivity), forces the agents to distinguish between personal contributions to the observed global reward signal and contributions made by other unseen agents in the world.

In our simplified experimental trials, we place the mobilized ad-hoc networking domain onto a grid world. the reward signal is a global reward signal that measures the total network performance by determining the connectivity of the network between sources and receivers. The sources and receivers occupy locations on the grid world. The agents' actions are limited functions that map their local state to N, S, E, W movements. We also limit the agents' transmission range to a distance of one grid block.

For further simplicity, the single receiver is stationary and always occupies the grid location (1,1). Source nodes move around randomly, and in our example here, there are two sources and eight mobile agent nodes in a 4x4 grid. This setup is shown in Figure 4, and the graph shows a comparison of an ordinary Q -learner and the filtering learner, plotting the increase in global rewards over time as the agents learn to perform their task as intermediate network nodes. The graph plots average performance over 10 runs, showing the benefit of the filtering process. Note that the performance over time fluctuates widely since the performance depends strongly on the relative locations of the sources to the receiver. However, the filtering agents almost always outperform the normal Q -learners since they are able to learn behavior policies that

choose good actions in most configurations of our mobilized ad-hoc networking grid world.

VII. LIMITATIONS AND EXTENSIONS

The Kalman filtering framework handles many domains beautifully, as we have seen. However, there are some cases where we may need to apply more sophisticated techniques. In all of the work above, we have assumed that the reward signal is deterministic – each state, action pair can only produce a single reward value, and will always produce that same value. There are some domains in which we'd like to model the reward as being stochastic. For example, the multi-armed bandit problem is a case in which the rewards are stochastically related to the action taken. When the stochasticity of the rewards approximates Gaussian noise, we can use the Kalman framework directly. In equation 1, v was set to exhibit zero mean and zero variance. However, allowing some variance would give the model an observation noise term that could reflect the stochasticity of the reward signal. There are some cases which cannot be finessed so easily, though. There are two potential remedies in this situation, which are discussed in detail in the extended version of this paper. One solution modifies the system equations so that the vector to be estimated represents the average reward over a time window, rather than a single deterministic value. Another alternative makes two passes over a history window. In the first pass, we do exactly the same as before, except that we also note the log-likelihood of each of our observations, based on the Kalman filter statistics. During the second pass, for each state that consistently exhibits unlikely observations, we split the state into one or more states, each corresponding to a different reward level. We then examine the average log-likelihood under this new model, and if it represents a significant improvement over the old model, we keep the split states.

Finally, in most cases the Kalman filtering method provides a very good estimate of r over time. Usually the estimates will asymptotically approach the actual values. However, one can imagine cases in which the optimal policy relies on the choice of one action over another, where the Q -value for the

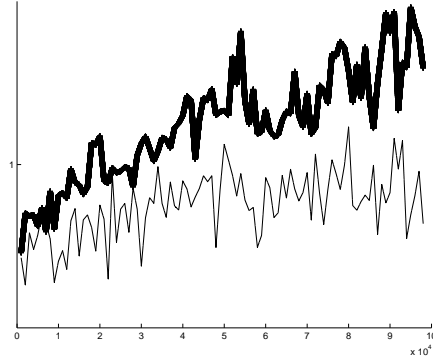
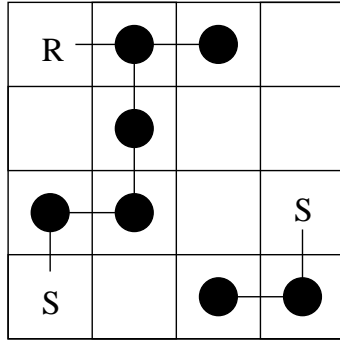


Fig. 4. (Left) A snapshot of the 4x4 adhoc-networking domain. S denotes the sources, R is the receiver, and the dots are the learning agents, which act as relay nodes. Lines denote current connections. Note that nodes may overlap. (Right) Graph shows average rewards (y-axis) in 1000-period windows as filtering (bold line) and ordinary (thin line) agents try to learn good policies for acting as network nodes. The filtering agent is able to learn a better policy, resulting in higher network performance (global reward). Graph shows the average for each type of agent over 10 trial runs of 100000 time periods (x-axis) each.

state-action pair are quite close together. Since we cannot guarantee an exact estimate of the reward values, and hence the state values and/or Q -values, the agent may make the wrong decision. However, even if the policy is sub-optimal, the error in our derived value function is at least bounded by $\frac{\epsilon}{1-\gamma}$, as long as the $|r(i) - \hat{r}(i)| < \epsilon \forall i$, and γ is again the discount rate. In the majority of cases, the estimates are good enough to lead the agent to learning a good policy, if not the optimal one.

VIII. CONCLUSION AND FUTURE WORK

This paper provides the general framework for a new approach to solving certain large multi-agent problems using a simple model that allows for efficient and robust learning using well-studied tools such as Kalman filtering. We provide a set of experimental results that gives empirical evidence for the usefulness of this model and technique.

As a practical application, this work can be directly applied to a more realistic mobile ad-hoc networking domain. We would like to move out of the grid world setup into a domain setup more similar to that described in Chang et. al. 2003. Also, more work could do done investigating the benefits of different variations of this model in various settings. Conditions for convergence of the technique described in this paper are also forthcoming.

REFERENCES

[Auer et al., 1995] Peter Auer, Nicolò Cesa-Bianchi, Yoav Freund, and Robert E. Schapire. Gambling in a rigged casino: the adversarial multi-armed bandit problem. In *Proceedings of the 36th Annual Symposium on Foundations of Computer Science*, 1995.

[Chang et al., 2003] Y. Chang, T. Ho, and L. P. Kaelbling. Reinforcement learning in mobilized ad-hoc networks. *Technical Report, AI Lab, MIT*, 2003.

[Choi et al., 1999] S. Choi, D. Yeung, and N. Zhang. Hidden-mode Markov decision processes. In *IJCAI Workshop on Neural, Symbolic, and Reinforcement Methods for Sequence Learning*, 1999.

[Claus and Boutilier, 1998] Caroline Claus and Craig Boutilier. The dynamics of reinforcement learning in cooperative multiagent systems. In *Proceedings of the 15th AAAI*, 1998.

[Kalman, 1960] R. E. Kalman. A new approach to linear filtering and prediction problems. *Transactions of the American Society of Mechanical Engineers, Journal of Basic Engineering*, 1960.

[Littman and Szepesvári, 1996] Michael L. Littman and Csaba Szepesvári. A generalized reinforcement-learning model: Convergence and applications. In *Proc. of the 13th ICML*, 1996.

[Mannor and Shimkin, 2001] Shie Mannor and Nahum Shimkin. Adaptive strategies and regret minimization in arbitrarily varying Markov environments. In *Proc. of 14th COLT*, 2001.

[Ng et al., 1999] Andrew Y. Ng, Daishi Harada, and Stuart Russell. Policy invariance under reward transformations: theory and application to reward shaping. In *Proc. 16th ICML*, 1999.

[Sutton and Barto, 1999] Richard S. Sutton and Andrew G. Barto. *Reinforcement Learning: An Introduction*. MIT Press, 1999.

[Szita et al., 2002] Istvan Szita, Balint Takacs, and Andras Lorincz. e-mdps: Learning in varying environments. *Journal of Machine Learning Research*, 2002.