



RESEARCH ARTICLE

REVISED Bioconductor Workflow for Microbiome Data Analysis: from raw reads to community analyses [version 2; peer review: 3 approved]

Ben J. Callahan¹, Kris Sankaran¹, Julia A. Fukuyama¹, Paul J. McMurdie², Susan P. Holmes¹

¹Statistics Department, Stanford University, Stanford, CA, 94305, USA

²Whole Biome Inc., San Francisco, CA, 94107, USA

V2 First published: 24 Jun 2016, 5:1492
<https://doi.org/10.12688/f1000research.8986.1>

Latest published: 02 Nov 2016, 5:1492
<https://doi.org/10.12688/f1000research.8986.2>

Abstract

High-throughput sequencing of PCR-amplified taxonomic markers (like the 16S rRNA gene) has enabled a new level of analysis of complex bacterial communities known as microbiomes. Many tools exist to quantify and compare abundance levels or OTU composition of communities in different conditions. The sequencing reads have to be denoised and assigned to the closest taxa from a reference database. Common approaches use a notion of 97% similarity and normalize the data by subsampling to equalize library sizes. In this paper, we show that statistical models allow more accurate abundance estimates. By providing a complete workflow in R, we enable the user to do sophisticated downstream statistical analyses, whether parametric or nonparametric. We provide examples of using the R packages dada2, phyloseq, DESeq2, ggplot2 and vegan to filter, visualize and test microbiome data. We also provide examples of supervised analyses using random forests and nonparametric testing using community networks and the ggnetwork package.

Keywords

microbiome , taxonomy , community analysis



This article is included in the **Bioconductor** gateway.

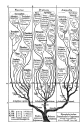
Open Peer Review

Approval Status

	1	2	3
version 2 (revision) 02 Nov 2016			
version 1 24 Jun 2016			

1. **Leo Lahti** , University of Turku, Turku, Finland
2. **Zachary Charlop-Powers** , The Rockefeller University, New York, USA
3. **Nandita R. Garud**, University of California, San Francisco, San Francisco, USA

Any reports and responses or comments on the article can be found at the end of the article.



This article is included in the **Phylogenetics** collection.

Corresponding author: Susan P. Holmes (susan@stat.stanford.edu)

Competing interests: No competing interests were disclosed.

Grant information: This work was partially supported by the NSF (DMS-1162538 to S.P.H.), the NIH (TR32 to KS and R01AI112401 to SPH), and a Stanford Interdisciplinary Graduate Fellowship supported JAF.

The funders had no role in study design, data collection and analysis, decision to publish, or preparation of the manuscript.

Copyright: © 2016 Callahan BJ *et al.* This is an open access article distributed under the terms of the [Creative Commons Attribution License](#), which permits unrestricted use, distribution, and reproduction in any medium, provided the original work is properly cited.

How to cite this article: Callahan BJ, Sankaran K, Fukuyama JA *et al.* **Bioconductor Workflow for Microbiome Data Analysis: from raw reads to community analyses [version 2; peer review: 3 approved]** F1000Research 2016, 5:1492

<https://doi.org/10.12688/f1000research.8986.2>

First published: 24 Jun 2016, 5:1492 <https://doi.org/10.12688/f1000research.8986.1>

REVISED Amendments from Version 1

In version 2 of the manuscript:

We have updated the procedure for storing the filtered and trimmed files during the call to `dada2`, this avoids overwriting the files if the workflow is run several times.

We have replaced the `msa` alignment function with `AlignSeqs` function from the *DECIPHER*¹ package, making the workflow more computationally efficient.

We have expanded the phyloseq section and reduced the number of network plots. We have also provided detailed discussion of our choice **not** to make the PCoA and PCA plots square.

We have added more detailed instructions in the Github repository as to how one can run only parts of the workflow and how to generate the full paper from scratch using the `main.rnw` file.

As suggested by reviewers, we have added more extended captions to figures. We have however refrained from providing a complete evaluation of DADA2 vs. OTUs or pooled/unpooled data to this manuscript. Performing such evaluations well is a significant undertaking and would take significant space to explain, and our primary purpose here is to demonstrate the many features of an R/Bioconductor amplicon analysis workflow.

We thank the three reviewers and a commentator who have provided useful feedback and we hope the revision has enhanced the readability and explained the code more completely.

See referee reports

Introduction

The *microbiome* is formed of the ecological communities of microorganisms that dominate the living world. Bacteria can now be identified through the use of next generation sequencing applied at several levels. Shotgun sequencing of all bacteria in a sample delivers knowledge of all the genes present. Here we will only be interested in the identification and quantification of individual taxa (or species) through a ‘fingerprint gene’ called 16s rRNA which is present in all bacteria. This gene presents several variable regions which can be used to identify the different taxa.

Previous standard workflows depended on clustering all 16s rRNA sequences (generated by next generation amplicon sequencing) that occur within a 97% radius of similarity and then assigning these to ‘OTUs’ from reference trees^{2,3}. These approaches do not incorporate all the data, in particular sequence quality information and statistical information available on the reads were not incorporated into the assignments.

In contrast, the **de novo** read counts used here will be constructed through the incorporation of both the quality scores and sequence frequencies in a probabilistic noise model for nucleotide transitions. For more details on the algorithmic implementation of this step see 4.

After filtering the sequences and removing the chimeræ, the data are compared to a standard database of bacteria and labeled. In this workflow, we have used the labeled sequences to build a de novo phylogenetic with the *phangorn*.

The key step in the sequence analysis is the manner in which reads are denoised and assembled into groups we have chosen to call RSVs (Ribosomal Sequence Variants) instead of the traditional OTUs (Operational Taxonomic Units).

This article describes a computational workflow for performing denoising, filtering, data transformations, visualization, supervised learning analyses, community network tests, hierarchical testing and linear models. We provide all the code and give several examples of different types of analyses and use-cases. There are often many different objectives in experiments involving microbiome data and we will only give a flavor for what could be possible once the data has been imported into R.

In addition, the code can be easily adapted to accommodate batch effects, covariates and multiple experimental factors.

The workflow is based on software packages from the open-source Bioconductor project⁵. We provide all steps necessary from the denoising and identification of the reads input as raw sequences in `fastq` files to the comparative testing and multivariate analyses of the samples and analyses of the abundances according to multiple available covariates.

Methods

Amplicon bioinformatics: from raw reads to tables

This section demonstrates the “full stack” of amplicon bioinformatics: construction of the sample-by-sequence feature table from the raw reads, assignment of taxonomy, and creation of a phylogenetic tree relating the sample sequences.

First we load the necessary packages.

```
library("knitr")
library("BiocStyle")
opts_chunk$set(cache = FALSE,fig.path="dadafigure/")
read_chunk(file.path("src", "bioinformatics.R"))

.cran_packages <- c("ggplot2", "gridExtra")
.bioc_packages <- c("dada2", "phyloseq", "DECIPHER", "phangorn")

.inst <- .cran_packages %in% installed.packages()
if(any(!.inst)) {
  install.packages(.cran_packages[!.inst])
}

.inst <- .bioc_packages %in% installed.packages()
if(any(!.inst)) {
  source("http://bioconductor.org/biocLite.R")
  biocLite(.bioc_packages[!.inst], ask = F)
}

# Load packages into session, and print package version
sapply(c(.cran_packages, .bioc_packages), require, character.only = TRUE)

set.seed(100)
```

The data we will analyze here are highly-overlapping Illumina Miseq 2x250 amplicon sequences from the V4 region of the 16S gene⁶. These 360 fecal samples were collected from 12 mice longitudinally over the first year of life, to investigate the development and stabilization of the murine microbiome⁷. These data are downloaded from the following location: <http://www.mothur.org/MiSeqDevelopmentData/StabilityNoMetaG.tar>.

```
miseq_path <- file.path("data", "MiSeq_SOP")
filt_path <- file.path("data", "filtered")

if(!file_test("-d", miseq_path)) {
  dir.create(miseq_path)
  download.file("http://www.mothur.org/MiSeqDevelopmentData/StabilityNoMetaG.tar",
               destfile = file.path(miseq_path, "StabilityNoMetaG.tar"))
  system(paste0("tar -xvf", file.path(miseq_path, "StabilityNoMetaG.tar"),
               "-C", miseq_path, "/"))
}

fns <- sort(list.files(miseq_path, full.names = TRUE))
fnFs <- fns[grepl("R1", fns)]
fnRs <- fns[grepl("R2", fns)]
```

Trim and Filter

We begin by filtering out low-quality sequencing reads and trimming the reads to a consistent length. While generally recommended filtering and trimming parameters serve as a starting point, no two datasets are identical and therefore it is always worth inspecting the quality of the data before proceeding.

```
ii <- sample(length(fnFs), 3)
for(i in ii) { print(plotQualityProfile(fnFs[i]) + ggtitle("Fwd")) }
for(i in ii) { print(plotQualityProfile(fnRs[i]) + ggtitle("Rev")) }
```

Most Illumina sequencing data shows a trend of decreasing average quality towards the end of sequencing reads.

Here, the forward reads maintain high quality throughout, while the quality of the reverse reads drops significantly at about position 160. Therefore, we choose to truncate the forward reads at position 245, and the reverse reads at position 160. We also choose to trim the first 10 nucleotides of each read based on empirical observations across many Illumina datasets that these base positions are particularly likely to contain pathological errors.

We combine these trimming parameters with standard filtering parameters, the most important being the enforcement of a maximum of 2 expected errors per-read⁸. Trimming and filtering is performed on paired reads jointly, i.e. both reads must pass the filter for the pair to pass.

```
if(!file_test("-d", filt_path)) dir.create(filt_path)
filtFs <- file.path(filt_path, basename(fnFs))
filtRs <- file.path(filt_path, basename(fnRs))
for(i in seq_along(fnFs)) {
  fastqPairedFilter(c(fnFs[[i]], fnRs[[i]]),
                   c(filtFs[[i]], filtRs[[i]]),
                   trimLeft=10, truncLen=c(245, 160),
                   maxN=0, maxEE=2, truncQ=2,
                   compress=TRUE)
}
```

Infer sequence variants

After filtering, the typical amplicon bioinformatics workflow clusters sequencing reads into operational taxonomic units (OTUs): groups of sequencing reads that differ by less than a fixed dissimilarity threshold. Here we instead use the high-resolution DADA2 method to infer ribosomal sequence variants (RSVs) exactly, without imposing any arbitrary threshold, and thereby resolving variants that differ by as little as one nucleotide⁴.

The sequence data is imported into R from demultiplexed fastq files (i.e. one fastq for each sample) and simultaneously dereplicated to remove redundancy. We name the resulting `derep-class` objects by their sample name.

```
derepFs <- derepFastq(filtsFs)
derepRs <- derepFastq(filtsRs)
sam.names <- sapply(strsplit(basename(filtsFs), "_"), `[`, 1)
names(derepFs) <- sam.names
names(derepRs) <- sam.names
```

The DADA2 method relies on a parameterized model of substitution errors to distinguish sequencing errors from real biological variation. Because error rates can (and often do) vary substantially between sequencing runs and PCR protocols, the model parameters can be discovered from the data itself using a form of unsupervised learning in which sample inference is alternated with parameter estimation until both are jointly consistent.

Parameter learning is computationally intensive, as it requires multiple iterations of the sequence inference algorithm, and therefore it is often useful to estimate the error rates from a (sufficiently large) subset of the data.

```
ddF <- dada(derepFs[1:40], err=NULL, selfConsist=TRUE)

## Initial error matrix unspecified. Error rates will be initialized to the
## maximum possible estimate from this data.

## Initializing error rates to maximum possible estimate.
## Sample 1 - 7084 reads in 1955 unique sequences.
## .....
## Sample 40 - 4191 reads in 922 unique sequences.
##   selfConsist step 5
## Convergence after 5 rounds.
```

```

ddR <- dada(derepRs[1:40], err=NULL, selfConsist=TRUE)

## Initial error matrix unspecified. Error rates will be initialized to the
## maximum possible estimate from this data.

## Initializing error rates to maximum possible estimate.
## Sample 1 - 7084 reads in 1548 unique sequences.
## .....
## Sample 40 - 4191 reads in 999 unique sequences.
##   selfConsist step 6
## Convergence after 6 rounds.

```

In order to verify that the error rates have been reasonably well-estimated, we inspect the fit between the observed error rates (black points) and the fitted error rates (black lines) in [Figure 2](#).

```

plotErrors(ddF)
plotErrors(ddR)

```

The DADA2 sequence inference method can run in two different modes: Independent inference by sample (`pool=FALSE`), and inference from the pooled sequencing reads from all samples (`pool=TRUE`). Independent inference has the advantage that computation time is linear in the number of samples, and memory requirements are flat with the number of samples. This allows scaling out to datasets of almost unlimited size. Pooled inference is more computationally taxing, and can become intractable for datasets of tens of millions of reads. However, pooling improves the detection of rare variants that were seen just once or twice in an individual sample but many times across all samples. As this dataset is not particularly large, we perform pooled inference. As of version 1.2, multithreading can be activated with the arguments `multithread = TRUE`, which can substantially speed this step.

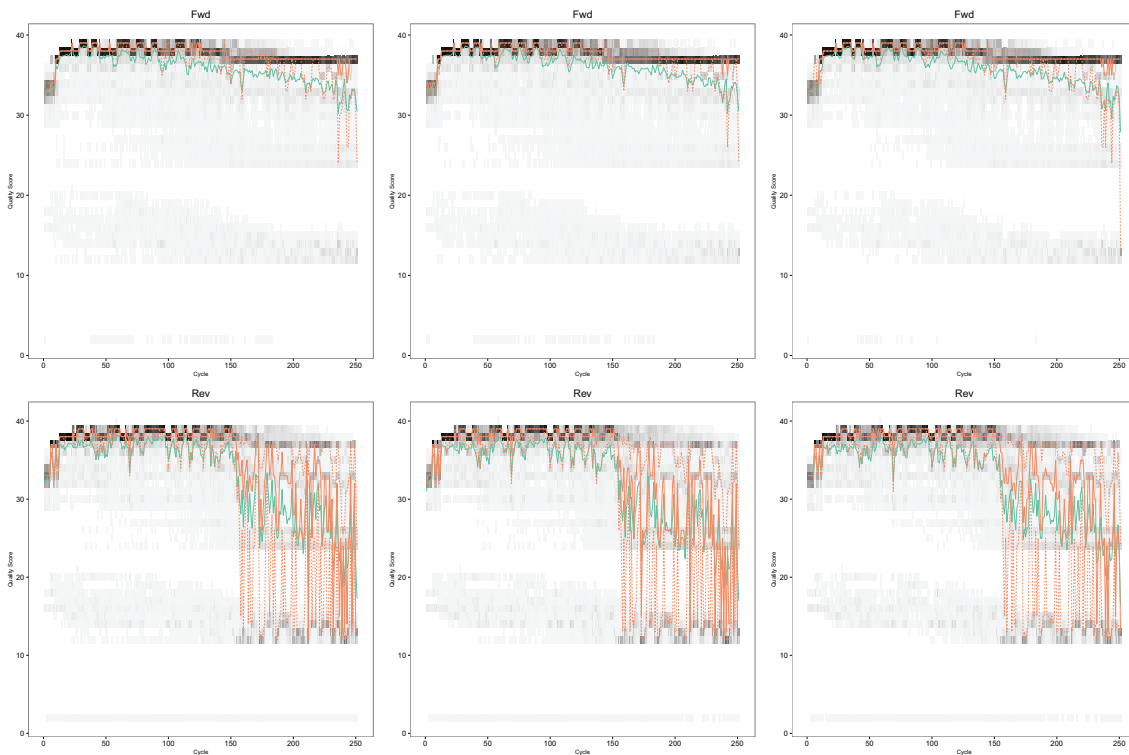


Figure 1. Forward and Reverse Error Profiles, the mean is in green, the median the solid orange line and the quartiles are the dotted orange lines.

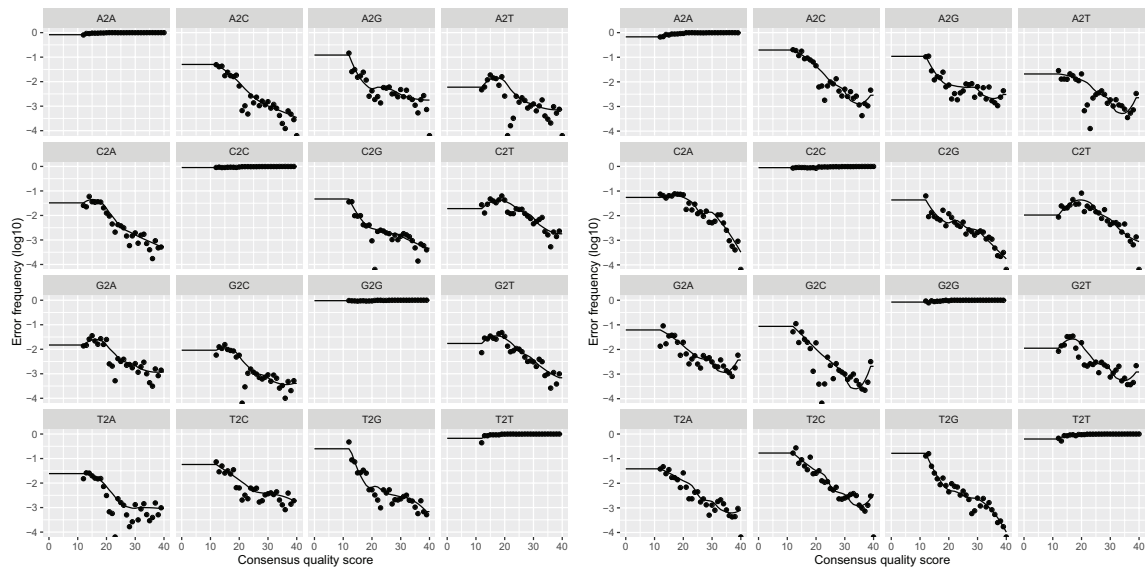


Figure 2. Forward and Reverse Read Error Profiles, showing the frequencies of each type of nucleotide transition as a function of quality.

```
dadaFs <- dada(derepFs, err=ddF[[1]]$err_out, pool=TRUE)
## 362 samples were pooled: 3342527 reads in 272916 unique sequences.
dadaRs <- dada(derepRs, err=ddR[[1]]$err_out, pool=TRUE)
## 362 samples were pooled: 3342527 reads in 278172 unique sequences.
```

The DADA2 sequence inference step removed (nearly) all substitution and indel errors from the data⁴. We now merge together the inferred forward and reverse sequences, removing paired sequences that do not perfectly overlap as a final control against residual errors.

```
mergers <- mergePairs(dadaFs, derepFs, dadaRs, derepRs)
```

Construct sequence table and remove chimeras

The DADA2 method produces a sequence table that is a higher-resolution analogue of the common “OTU table”, i.e. a sample by sequence feature table valued by the number of times each sequence was observed in each sample.

```
seqtab.all <- makeSequenceTable(mergers[!grepl("Mock", names(mergers))])
```

Notably, chimeras have not yet been removed. The error model in the sequence inference algorithm does not include a chimera component, and therefore we expect this sequence table to include many chimeric sequences. We now remove chimeric sequences by comparing each inferred sequence to the others in the table, and removing those that can be reproduced by stitching together two more abundant sequences.

```
seqtab <- removeBimeraDenovo(seqtab.all)
```

Although exact numbers vary substantially by experimental condition, it is typical that chimeras comprise a substantial fraction of inferred sequence variants, but only a small fraction of all reads. That is what is observed here: 1503 of 1892 sequence variants were chimeric, but these only represented 10% of all reads.

Assign taxonomy

One of the benefits of using well-classified marker loci like the 16S rRNA gene is the ability to taxonomically classify the sequence variants. The `dada2` package implements the naive Bayesian classifier method for this purpose⁹. This classifier compares sequence variants to a training set of classified sequences, and here we use the RDP v14 training set¹⁰.

```
ref_fasta <- "data/rdp_train_set_14.fa.gz"
taxtab <- assignTaxonomy(seqtab, refFasta = ref_fasta)
colnames(taxtab) <- c("Kingdom", "Phylum", "Class", "Order", "Family", "Genus")
```

GreenGenes and Silva training set fasta files formatted for the `assignTaxonomy` function are also available for download at <https://www.dropbox.com/sh/mfcivbudmc21cqt/AABII-AUM5uKvjrR33ct-cTXa?dl=0>.

Construct phylogenetic tree

Phylogenetic relatedness is commonly used to inform downstream analyses, especially the calculation of phylogeny-aware distances between microbial communities. The DADA2 sequence inference method is reference-free, so we must construct the phylogenetic tree relating the inferred sequence variants de novo. We begin by performing a multiple-alignment using the DECIPHER R package¹¹.

```
seqs <- getSequences(seqtab)
names(seqs) <- seqs # This propagates to the tip labels of the tree
alignment <- AlignSeqs(DNAStringSet(seqs), anchor=NA)

## Determining distance matrix based on shared 5-mers:
##
## Clustering into groups by similarity:
##
## Aligning Sequences:
##
## Determining distance matrix based on alignment:
##
## Reclustering into groups by similarity:
##
## Realigning Sequences:
##
## Refining the alignment:
```

The `phangorn` R package is then used to construct a phylogenetic tree. Here we first construct a neighbor-joining tree, and then fit a GTR+G+I (Generalized time-reversible with Gamma rate variation) maximum likelihood tree using the neighbor-joining tree as a starting point.

```
phang.align <- phyDat(as(alignment, "matrix"), type="DNA")
dm <- dist.ml(phang.align)
treeNJ <- NJ(dm) # Note, tip order != sequence order
fit = pml(treeNJ, data=phang.align)

## negative edges length changed to 0!

fitGTR <- update(fit, k=4, inv=0.2)
fitGTR <- optim.pml(fitGTR, model="GTR", optInv=TRUE, optGamma=TRUE,
  rearrangement = "stochastic", control = pml.control(trace = 0))
detach("package:phangorn", unload=TRUE)
```

Combine data into a phyloseq object

The `phyloseq` package organizes and synthesizes the different data types from a typical amplicon sequencing experiment into a single data object that can be easily manipulated. The last bit of information needed is the sample data contained in a `.csv` file.


```

mimarks_path <- "data/MIMARKS_Data_combined.csv"
samdf <- read.csv(mimarks_path, header=TRUE)
samdf$SampleID <- paste0(gsub("00", "", samdf$host_subject_id), "D", samdf$age-21)
samdf <- samdf[!duplicated(samdf$SampleID),] # Remove duplicate entries for reverse reads
rownames(seqtab) <- gsub("124", "125", rownames(seqtab)) # Fixing an odd discrepancy
all(rownames(seqtab) %in% samdf$SampleID) # TRUE

## [1] TRUE

rownames(samdf) <- samdf$SampleID
keep.cols <- c("collection_date", "biome", "target_gene", "target_subfragment",
"host_common_name", "host_subject_id", "age", "sex", "body_product", "tot_mass",
"diet", "family_relationship", "genotype", "SampleID")
samdf <- samdf[rownames(seqtab), keep.cols]

```

The full suite of data for this study – the sample-by-sequence feature table, the sample metadata, the sequence taxonomies, and the phylogenetic tree – can now be combined into a single object.

```

ps <- phyloseq(tax_table(taxtab), sample_data(samdf),
otu_table(seqtab, taxa_are_rows = FALSE), phy_tree(fitGTR$tree))

```

phyloseq

*phyloseq*¹² is an R package to import, store, analyze, and graphically display complex phylogenetic sequencing data that has already been clustered into Operational Taxonomic Units (OTUs) or more appropriately denoised, and it is most useful when there is also associated sample data, phylogeny, and/or taxonomic assignment of each taxa. *phyloseq* leverages and builds upon many of the tools available in R for ecology and phylogenetic analysis (*vegan*¹³, *ade4*¹⁴, *ape*¹⁵), while also using advanced/flexible graphic systems (*ggplot2*¹⁶) to easily produce publication-quality graphics of complex phylogenetic data. The *phyloseq* package uses a specialized system of S4 data classes to store all related phylogenetic sequencing data as a single, self-consistent, self-describing experiment-level object, making it easier to share data and reproduce analyses. In general, *phyloseq* seeks to facilitate the use of R for efficient interactive and reproducible analysis of amplicon count data jointly with important sample covariates.

Further documentation

This tutorial shows a useful example workflow, but many more analyses are available to you in *phyloseq*, and R in general, than can fit in a single workflow. The [phyloseq home page](#) is a good place to begin browsing additional *phyloseq* documentation, as are the three vignettes included within the package, and linked directly at [the phyloseq release page on Bioconductor](#).

Loading Data

Many use cases result in the need to import and combine different data into a *phyloseq* class object, this can be done using the `import_biom` function to read recent QIIME format files, older files can still be imported with `import_qiime`. More complete details can be found on the [phyloseq FAQ page](#).

In the previous section the results of *dada2* sequence processing were organized into a *phyloseq* object. This object was also saved in R-native serialized RDS format. We will re-load this here for completeness as the initial object `p0`.

```

library("phylos12eq")
library("gridExtra")
ps = readRDS("data/ps.rds")
ps

## phyloseq-class experiment-level object
## otu_table() OTU Table: [ 389 taxa and 360 samples ]
## sample_data() Sample Data: [ 360 samples by 14 sample variables ]
## tax_table() Taxonomy Table: [ 389 taxa by 6 taxonomic ranks ]
## phy_tree() Phylogenetic Tree: [ 389 tips and 387 internal nodes ]

```

Shiny-phyloseq

It can be beneficial to start the data exploration process interactively, this often saves time in detecting outliers and specific features of the data. [Shiny-phyloseq](#)¹⁷ is an interactive web application that provides a graphical user interface to the phyloseq package. The object just loaded into the R session in this workflow is suitable for this graphical interaction with Shiny-phyloseq.

Filtering

phyloseq provides useful tools for filtering, subsetting, and agglomerating taxa – a task that is often appropriate or even necessary for effective analysis of microbiome count data. In this subsection, we graphically explore the prevalence of taxa in the example dataset, and demonstrate how this can be used as a filtering criteria. One of the reasons to filter in this way is to avoid spending much time analyzing taxa that were seen only rarely among samples. This also turns out to be a useful filter of noise (taxa that are actually just artifacts of the data collection process), a step that should probably be considered essential for datasets constructed via heuristic OTU-clustering methods, which are notoriously prone to generating spurious taxa.

Taxonomic Filtering

In many biological settings, the set of all organisms from all samples are well-represented in the available taxonomic reference database. When (and only when) this is the case, it is reasonable or even advisable to filter taxonomic features for which a high-rank taxonomy could not be assigned. Such ambiguous features in this setting are almost always sequence artifacts that don't exist in nature. It should be obvious that such a filter is not appropriate for samples from poorly characterized or novel specimens, at least until the possibility of taxonomic novelty can be satisfactorily rejected. Phylum is a useful taxonomic rank to consider using for this purpose, but others may work effectively for your data.

To begin, create a table of read counts for each Phylum present in the dataset.

```
# Show available ranks in the dataset
rank_names(ps)

## [1] "Kingdom" "Phylum" "Class" "Order" "Family" "Genus"

# Create table, number of features for each phyla
table(tax_table(ps)[, "Phylum"], exclude = NULL)

##
##           Actinobacteria           Bacteroidetes
##                13                23
## Candidatus_Saccharibacteria Cyanobacteria/Chloroplast
##                1                4
##           Deinococcus-Thermus           Firmicutes
##                1                327
##           Fusobacteria           Proteobacteria
##                1                11
##           Tenericutes           Verrucomicrobia
##                1                1
##                <NA>
##                6
```

This shows a few phyla for which only one feature was observed. Those may be worth filtering, and we'll check that next. First, notice that in this case, six features were annotated with a Phylum of NA. These features are probably artifacts in a dataset like this, and should be removed.

The following ensures that features with ambiguous phylum annotation are also removed. Note the flexibility in defining strings that should be considered ambiguous annotation.

```
ps0 <- subset_taxa(ps, !is.na(Phylum) & !Phylum %in% c("", "uncharacterized"))
```

A useful next step is to explore feature *prevalence* in the dataset, which we will define here as the number of samples in which a taxa appears at least once.

```
# Compute prevalence of each feature, store as data.frame
prevdf = apply(X = otu_table(ps0),
               MARGIN = ifelse(taxa_are_rows(ps0), yes = 1, no = 2),
               FUN = function(x){sum(x > 0)})
# Add taxonomy and total read counts to this data.frame
prevdf = data.frame(Prevalence = prevdf,
                   TotalAbundance = taxa_sums(ps0),
                   tax_table(ps0))
```

Are there phyla that are comprised of mostly low-prevalence features? Compute the total and average prevalences of the features in each phylum.

```
plyr::ddply(prevdf, "Phylum", function(df1){cbind(mean(df1$Prevalence), sum(df1$Prevalence))})

##           Phylum      1      2
## 1      Actinobacteria 120.2 1562
## 2      Bacteroidetes 265.5 6107
## 3 Candidatus_Saccharibacteria 280.0 280
## 4      Cyanobacteria/Chloroplast 64.2 257
## 5      Deinococcus-Thermus 52.0 52
## 6      Firmicutes 179.2 58614
## 7      Fusobacteria 2.0 2
## 8      Proteobacteria 59.1 650
## 9      Tenericutes 234.0 234
## 10     Verrucomicrobia 104.0 104
```

Deinococcus-Thermus appeared in just over one percent of samples, and Fusobacteria appeared in just 2 samples total. In some cases it might be worthwhile to explore these two phyla in more detail despite this (though probably not Fusobacteria's two samples). For the purposes of this example, though, they will be filtered from the dataset.

```
# Define phyla to filter
filterPhyla = c("Fusobacteria", "Deinococcus-Thermus")
# Filter entries with unidentified Phylum.
ps1 = subset_taxa(ps0, !Phylum %in% filterPhyla)
ps1

## phyloseq-class experiment-level object
## otu_table() OTU Table: [ 381 taxa and 360 samples ]
## sample_data() Sample Data: [ 360 samples by 14 sample variables ]
## tax_table() Taxonomy Table: [ 381 taxa by 6 taxonomic ranks ]
## phy_tree() Phylogenetic Tree: [ 381 tips and 379 internal nodes ]
```

Prevalence Filtering

The previous filtering steps are considered *supervised*, because they relied on prior information that is external to this experiment (a taxonomic reference database). This next filtering step is completely *unsupervised*, relying only on the data in this experiment, and a parameter that we will choose after exploring the data. Thus, this filtering step can be applied even in settings where taxonomic annotation is unavailable or unreliable.

First, explore the relationship of prevalence and total read count for each feature. Sometimes this reveals outliers that should probably be removed, and also provides insight into the ranges of either feature that might be useful. This aspect depends quite a lot on the experimental design and goals of the downstream inference, so keep these in mind. It

may even be the case that different types of downstream inference require different choices here. There is no reason to expect ahead of time that a single filtering workflow is appropriate for all analysis.

```
# Subset to the remaining phyla
prevdf1 = subset(prevdf, Phylum %in% get_taxa_unique(ps1, "Phylum"))
ggplot(prevdf1, aes(TotalAbundance, Prevalence / nsamples(ps0), color=Phylum)) +
  # Include a guess for parameter
  geom_hline(yintercept = 0.05, alpha = 0.5, linetype = 2) + geom_point(size = 2, alpha = 0.7) +
  scale_x_log10() + xlab("Total Abundance") + ylab("Prevalence [Frac. Samples]") +
  facet_wrap(~Phylum) + theme(legend.position="none")
```

Sometimes a natural separation in the dataset reveals itself, or at least, a conservative choice that is in a stable region for which small changes to the choice would have minor or no effect on the biological interpretation (stability). Here no natural separation is immediately evident, but it looks like we might reasonably define a prevalence threshold in a range of zero to 10 percent or so. Take care that this choice does not introduce bias into a downstream analysis of association of differential abundance.

The following uses five percent of all samples as the prevalence threshold.

```
# Define prevalence threshold as 5% of total samples
prevalenceThreshold = 0.05 * nsamples(ps0)
prevalenceThreshold

## [1] 18

# Execute prevalence filter, using `prune_taxa()` function
keepTaxa = rownames(prevdf1)[(prevdf1$Prevalence >= prevalenceThreshold)]
ps2 = prune_taxa(keepTaxa, ps0)
```

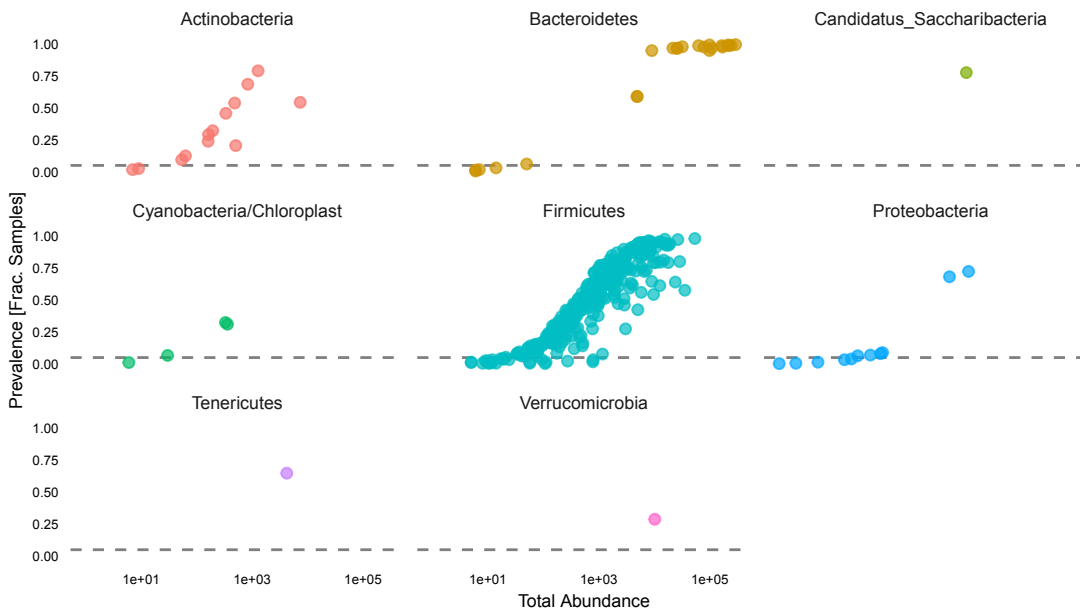


Figure 3. Taxa prevalence versus total counts. Each point is a different taxa. Exploration of the data in this way is often useful for selecting filtering parameters, like the minimum prevalence criteria we will used to filter the data above.

Agglomerate taxa

When there is known to be a lot of species or sub-species functional redundancy in a microbial community, it might be useful to agglomerate the data features corresponding to closely related taxa. Ideally we would know the functional redundancies perfectly ahead of time, in which case we would agglomerate taxa using those defined relationships and the `merge_taxa()` function in `phyloseq`. That kind of exquisite functional data is usually not available, and different pairs of microbes will have different sets of overlapping functions, complicating the matter of defining appropriate grouping criteria.

While not necessarily the most useful or functionally-accurate criteria for grouping microbial features (sometimes far from accurate), taxonomic agglomeration has the advantage of being much easier to define ahead of time. This is because taxonomies are usually defined with a comparatively simple tree-like graph structure that has a fixed number of internal nodes, called “ranks”. This structure is simple enough for the `phyloseq` package to represent taxonomies as table of taxonomy labels. Taxonomic agglomeration groups all the “leaves” in the hierarchy that descend from the user-prescribed agglomerating rank, this is sometimes called ‘glomming’.

The following example code shows how one would combine all features that descend from the same genus.

```
# How many genera would be present after filtering?
length(get_taxa_unique(ps2, taxonomic.rank = "Genus"))

## [1] 49

ps3 = tax_glom(ps2, "Genus", NArm = TRUE)
```

If taxonomy is not available or not reliable, tree-based agglomeration is a “taxonomy-free” alternative to combine data features corresponding to closely-related taxa. In this case, rather than taxonomic rank, the user specifies a tree height corresponding to the phylogenetic distance between features that should define their grouping. This is very similar to “OTU Clustering”, except that in many OTU Clustering algorithms the sequence distance being used does not have the same (or any) evolutionary definition.

```
h1 = 0.4
ps4 = tip_glom(ps2, h = h1)
```

Here `phyloseq`’s `plot_tree()` function compare the original unfiltered data, the tree after taxonomic agglomeration, and the tree after phylogenetic agglomeration. These are stored as separate plot objects, then rendered together in one combined graphic using `gridExtra::grid.arrange`.

```
multiPlotTitleTextSize = 8
p2tree = plot_tree(ps2, method = "treeonly",
                  ladderize = "left",
                  title = "Before Agglomeration") +
  theme(plot.title = element_text(size = multiPlotTitleTextSize))
p3tree = plot_tree(ps3, method = "treeonly",
                  ladderize = "left", title = "By Genus") +
  theme(plot.title = element_text(size = multiPlotTitleTextSize))
p4tree = plot_tree(ps4, method = "treeonly",
                  ladderize = "left", title = "By Height") +
  theme(plot.title = element_text(size = multiPlotTitleTextSize))

# group plots together
grid.arrange(nrow = 1, p2tree, p3tree, p4tree)
```

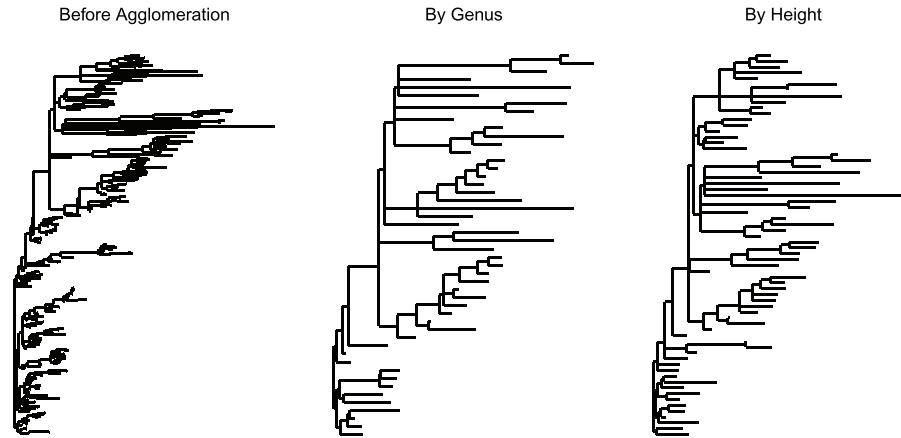


Figure 4. The original tree (left), taxonomic agglomeration at Genus rank (middle), phylogenetic agglomeration at a fixed distance of 0.4 (right).

Abundance value transformation

It is usually necessary to transform microbiome count data to account for differences in library size, variance, scale, etc. The phyloseq package provides a flexible interface for defining new functions to accomplish these transformations of the abundance values via the `transform_sample_counts()` function. The first argument to this function is the phyloseq object you want to transform, and the second argument is an R function that defines the transformation. The R function is applied sample-wise, expecting that the first unnamed argument is a vector of taxa counts in the same order as the phyloseq object. Additional arguments are passed on to the function specified in the second argument, providing an explicit means to include pre-computed values, previously defined parameters/thresholds, or any other object that might be appropriate for computing the transformed values of interest.

This example begins by defining a custom plot function, `plot_abundance()`, that uses phyloseq's `psmelt()` function to define a relative abundance graphic. We will use this to compare differences in scale and distribution of the abundance values in our phyloseq object before and after transformation.

```
plot_abundance = function(physeq, title = "",
                          Facet = "Order", Color = "Phylum"){
  # Arbitrary subset, based on Phylum, for plotting
  plf = subset_taxa(physeq, Phylum %in% c("Firmicutes"))
  mphyseq = psmelt(plf)
  mphyseq <- subset(mphyseq, Abundance > 0)
  ggplot(data = mphyseq, mapping = aes_string(x = "sex", y = "Abundance",
                                              color = Color, fill = Color)) +
    geom_violin(fill = NA) +
    geom_point(size = 1, alpha = 0.3,
              position = position_jitter(width = 0.3)) +
    facet_wrap(facets = Facet) + scale_y_log10() +
    theme(legend.position="none")
}
```

The transformation in this case converts the counts from each sample into their frequencies, often referred to as *proportions* or *relative abundances*. This function is so simple that it is easiest to define it within the function call to `transform_sample_counts()`.

```
# Transform to relative abundance. Save as new object.
ps3ra = transform_sample_counts(ps3, function(x){x / sum(x)})
```

Now plot the abundance values before and after transformation.

```
plotBefore = plot_abundance(ps3, "")
plotAfter = plot_abundance(ps3ra, "")
# Combine each plot into one graphic.
grid.arrange(nrow = 2, plotBefore, plotAfter)
```

Subset by taxonomy

Notice on the previous plot that *Lactobacillales* appears to be a taxonomic Order with bimodal abundance profile in the data. We can check for a taxonomic explanation of this pattern by plotting just that taxonomic subset of the data. For this, we subset with the `subset_taxa()` function, and then specify a more precise taxonomic rank to the `Facet` argument of the `plot_abundance` function that we defined above.

```
psOrd = subset_taxa(ps3ra, Order == "Lactobacillales")
plot_abundance(psOrd, Facet = "Genus", Color = NULL)
```

At this stage in the workflow, after converting raw reads to interpretable species abundances, and after filtering and transforming these abundances to focus attention on scientifically meaningful quantities, we are in a position to consider more careful statistical analysis. R is an ideal environment for performing these analyses, as it has an active community of package developers building simple interfaces to sophisticated techniques. As a variety of methods are available, there is no need to commit to any rigid analysis strategy a priori. Further, the ability to easily call packages without reimplementing methods frees researchers to iterate rapidly through alternative analysis ideas. The advantage of performing this full workflow in R is that this transition from bioinformatics to statistics is effortless.

We back these claims by illustrating several analyses on the mouse data prepared above. We experiment with several flavors of exploratory ordination before shifting to more formal testing and modeling, explaining the settings in which the different points of view are most appropriate. Finally, we provide example analyses of multitable data, using a study in which both metabolomic and microbial abundance measurements were collected on the same samples, to demonstrate that the general workflow presented here can be adapted to the multitable setting.

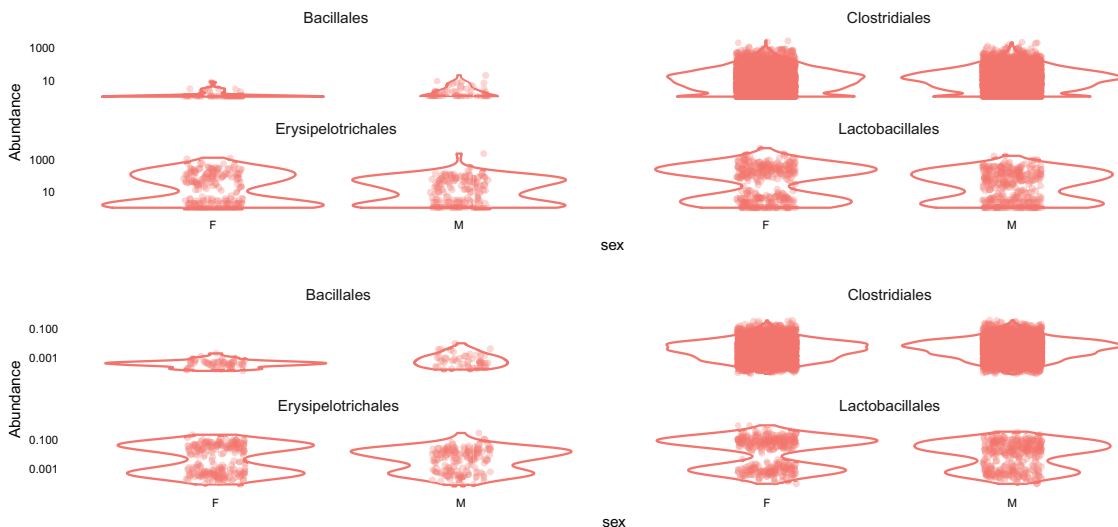


Figure 5. Comparison of original abundances (top panel) and relative abundances (lower).

```

.cran_packages <- c("knitr", "phyloseqGraphTest", "phyloseq", "shiny",
  "miniUI", "caret", "pls", "e1071", "ggplot2", "randomForest",
  "vegan", "plyr", "dplyr", "ggrepel", "nlme",
  "reshape2", "devtools", "PMA", "structSSI", "ade4",
  "igraph", "ggnetwork", "intergraph", "scales")
.github_packages <- c("jfukuyama/phyloseqGraphTest")
.bioc_packages <- c("phyloseq", "genefilter", "impute")

# Install CRAN packages (if not already installed)
.inst <- .cran_packages %in% installed.packages()
if (any(!.inst)){
  install.packages(.cran_packages[!.inst], repos = "http://cran.rstudio.com/")
}

.inst <- .github_packages %in% installed.packages()
if (any(!.inst)){
  devtools::install_github(.github_packages[!.inst])
}

.inst <- .bioc_packages %in% installed.packages()
if (any(!.inst)){
  source("http://bioconductor.org/biocLite.R")
  biocLite(.bioc_packages[!.inst])
}

```

Preprocessing

Before doing the multivariate projections, we will add a few columns to our sample data, which can then be used to annotate plots. From [Figure 7](#), we see that the ages of the mice come in a couple of groups, and so we make a categorical variable corresponding to young, middle-aged, and old mice. We also record the total number of counts seen in each sample and log-transform the data as an approximate variance stabilizing transformation.

```

qplot(sample_data(ps)$age, geom = "histogram") + xlab("age")
qplot(log10(rowSums(otu_table(ps)))) +
  xlab("Logged counts-per-sample")

```

For a first pass, we look at principal coordinates analysis (PCoA) with either the Bray-Curtis dissimilarity on the weighted Unifrac distance. We see immediately that there are six outliers. These turn out to be the samples from females 5 and 6 on day 165 and the samples from males 3, 4, 5, and 6 on day 175. We will take them out, since we are mainly interested in the relationships between the non-outlier points.

```

pslog <- transform_sample_counts(ps, function(x) log(1 + x))
sample_data(pslog)$age_binned <- cut(sample_data(pslog)$age,
  breaks = c(0, 100, 200, 400))
out.wuf.log <- ordinate(pslog, method = "MDS", distance = "wunifrac")

evals <- out.wuf.log$values$Eigenvalues
plot_ordination(pslog, out.wuf.log, color = "age_binned") +
  labs(col = "Binned Age") +
  coord_fixed(sqrt(evals[2] / evals[1]))

```

Before we continue, we should check the two female outliers – they have been taken over by the same OTU/RSV, which has a relative abundance of over 90% in each of them. This is the only time in the entire data set that this RSV has such a high relative abundance – the rest of the time it is below 20%. In particular, its diversity is by far the lowest of all the samples.

```

rel_abund <- t(apply(otu_table(ps), 1, function(x) x / sum(x)))
qplot(rel_abund[, 12], geom = "histogram") +
  xlab("Relative abundance")

```

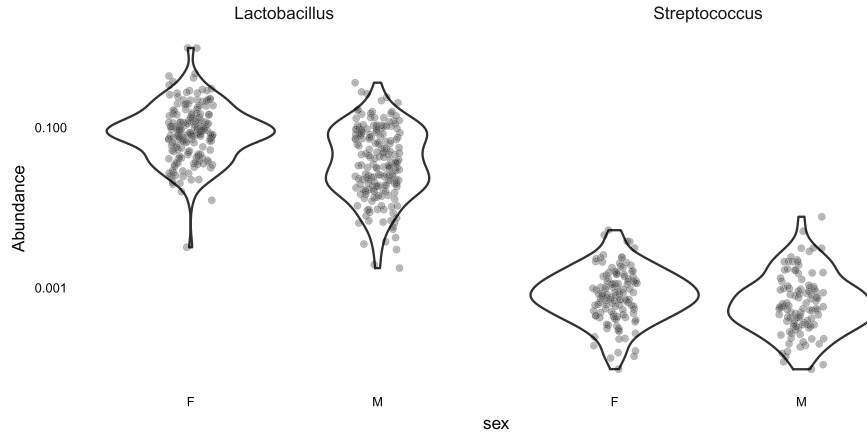



Figure 6. Violin plot of the relative abundances of Lactobacillales taxonomic Order, grouped by host sex and genera. Here it is clear that the apparent bimodal distribution of Lactobacillales on the previous plot was the result of a mixture of two different genera, with the typical *Lactobacillus* relative abundance much larger than *Streptococcus*.

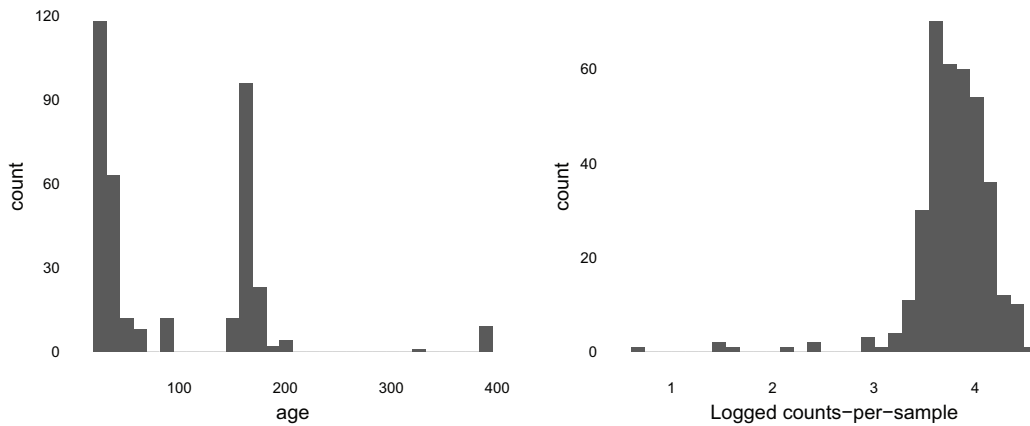


Figure 7. Preliminary plots suggest certain preprocessing steps. The histogram on the left motivates the creation of a new categorical variable, binning age into one of the three peaks. The histogram on the right suggests that a log $(1 + x)$ transformation is sufficient for normalizing the abundance data.

Aspect ratio of ordination plots

In the ordination plots in [Figure 8–Figure 14](#), you may have noticed as did the reviewers of the first version of the paper, that the maps are not presented as square representations as is often the case in standard PCoA and PCA plots in the literature.

The reason for this is that as we are trying to represent the distances between samples as faithfully as possible; we have to take into account that the second eigenvalue is always smaller than the first, sometimes considerably so, thus we normalize the axis norm ratios to the relevant eigenvalue ratios.

Different ordination projections

As we have seen, an important first step in analyzing microbiome data is to do unsupervised, exploratory analysis. This is simple to do in *phyloseq*, which provides many distances and ordination methods.

After documenting the outliers, we are going to compute ordinations with these outliers removed and more carefully study the output. We see that there is a fairly substantial age effect that is consistent between all the mice, male and female, and from different litters. We’ll first perform a PCoA using Bray-Curtis dissimilarity.

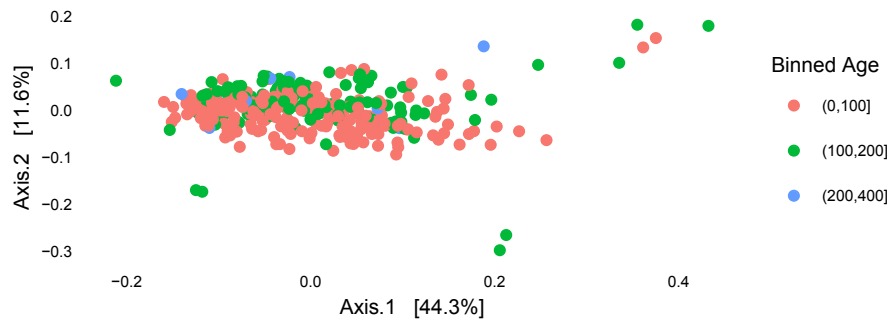


Figure 8. An ordination on the logged abundance data reveals a few outliers.

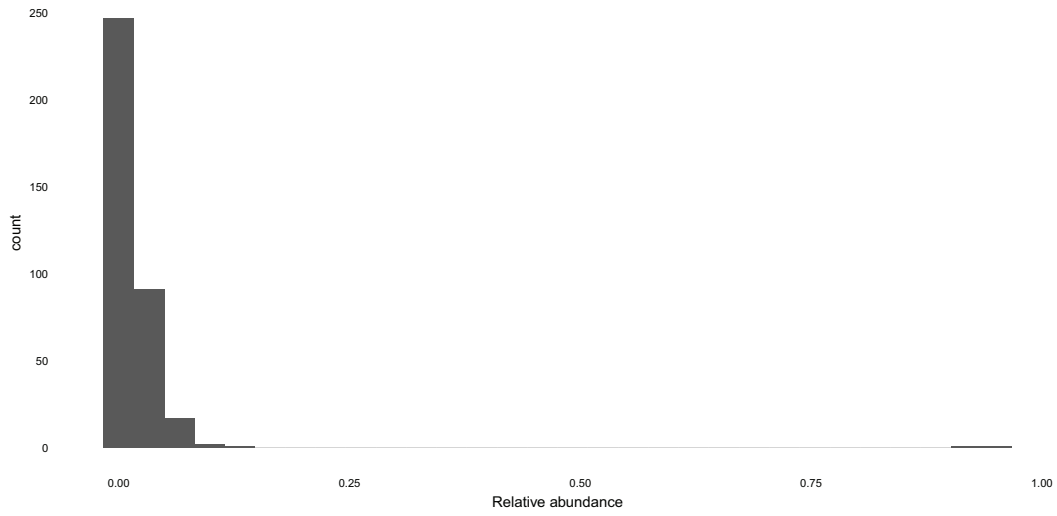


Figure 9. The outlier samples are dominated by a single RSV.

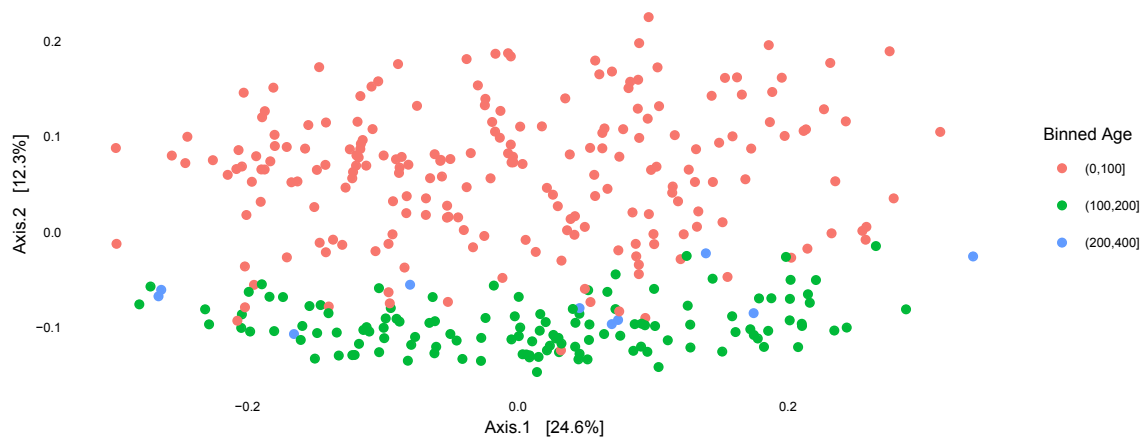


Figure 10. A PCoA plot using Bray-Curtis distance between samples.

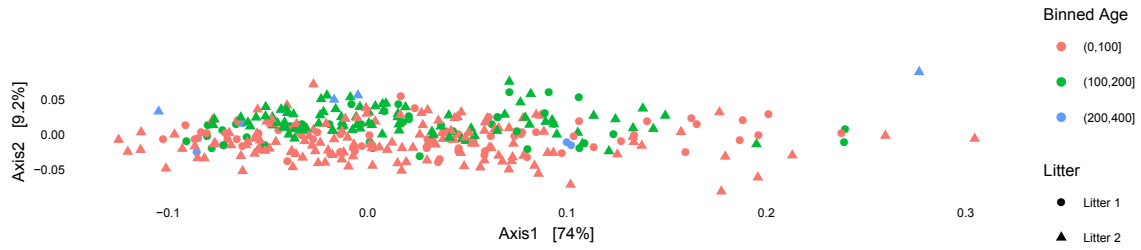


Figure 11. A DPCoA plot incorporates phylogenetic information, but is dominated by the first axis.

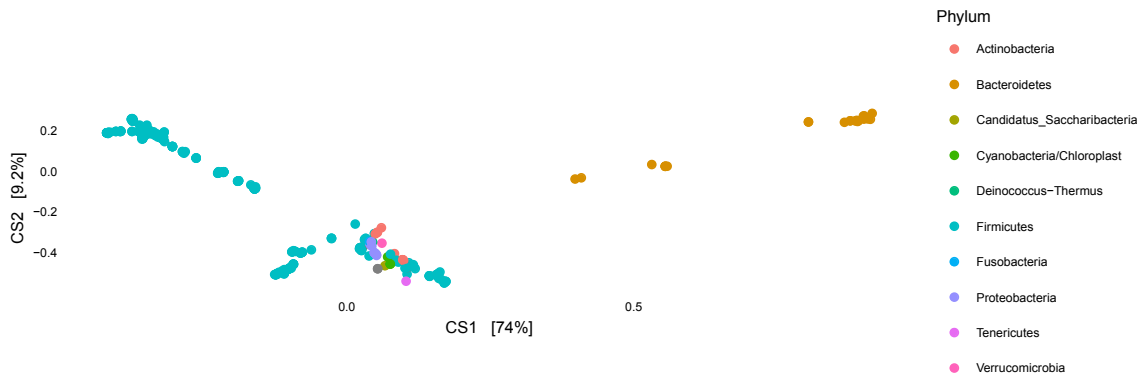


Figure 12. The DPCoA sample positions can be interpreted with respect to the species coordinates in this display.

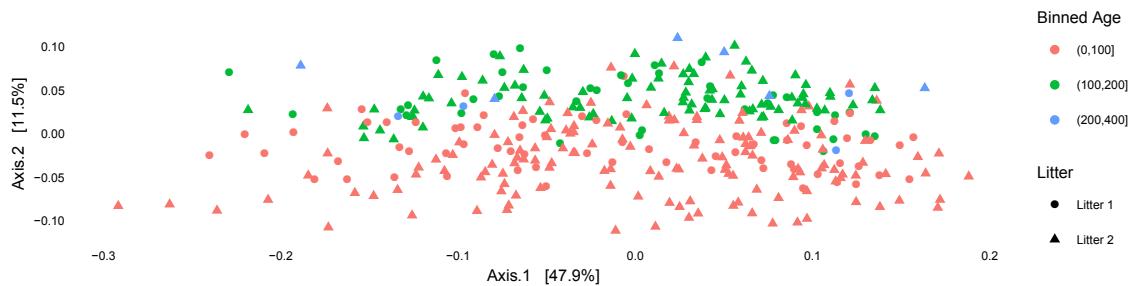


Figure 13. The sample positions produced by a PCoA using weighted Unifrac.

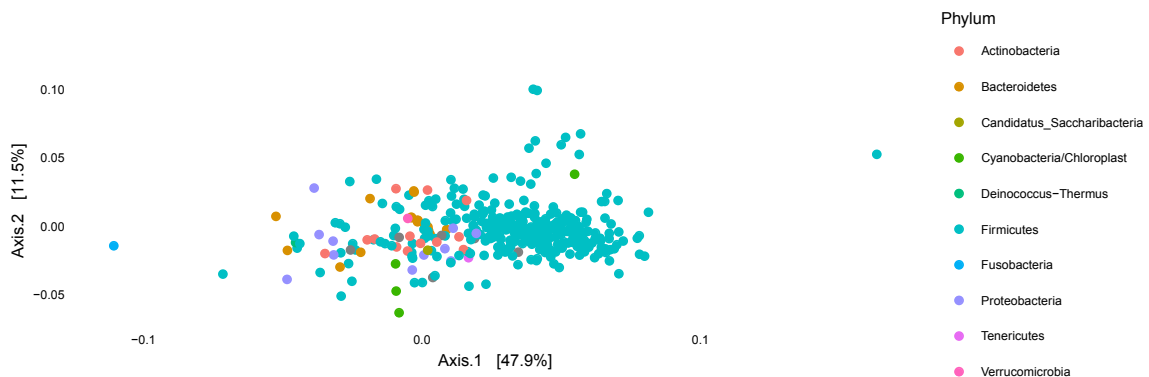


Figure 14. Species coordinates that can be used to interpret the sample positions from PCoA with weighted Unifrac. Compared to the representation in Figure 12, this display is harder to interpret.

The first plot shows the ordination of the samples, and we see that the second axis corresponds to an age effect, with the samples from the younger and older mice separating fairly well. The first axis correlates fairly well with library size (this is not shown). The first axis explains about twice the variability than the first, this translates into the elongated form of the ordination plot.

```
setup_example(c("phyloseq", "ggplot2", "plyr", "dplyr", "reshape2",
               "ade4", "ggrepel"))
out.bc.log <- ordinate(pslog, method = "MDS", distance = "bray")

evals <- out.dpcoa.log$eig
plot_ordination(pslog, out.dpcoa.log, color = "age_binned",
               shape = "family_relationship") +
  coord_fixed(sqrt(evals[2] / evals[1])) +
  labs(col = "Binned Age", shape = "Litter")

evals <- out.bc.log$values$Eigenvalues
plot_ordination(pslog, out.bc.log, color = "age_binned") +
  coord_fixed(sqrt(evals[2] / evals[1])) +
  labs(col = "Binned Age")
```

Next we look at double principal coordinates analysis (DPCoA)¹⁸⁻²⁰, which is a phylogenetic ordination method and that provides a biplot representation of both samples and taxonomic categories. We see again that the second axis corresponds to young vs. old mice, and the biplot suggests an interpretation of the second axis: samples that have larger scores on the second axis have more taxa from Bacteroidetes and one subset of Firmicutes.

```
out.dpcoa.log <- ordinate(pslog, method = "DPCoA")
```

Finally, we can look at the results of PCoA with weighted Unifrac. As before, we find that the second axis is associated with an age effect, which is fairly similar to DPCoA. This is not surprising, because both are phylogenetic ordination methods taking abundance into account. However, when we compare biplots, we see that the DPCoA gave a much cleaner interpretation of the second axis, compared to weighted Unifrac.

```
out.wuf.log <- ordinate(pslog, method = "PCoA", distance = "wunifrac")
```

PCA on ranks

Microbial abundance data is often heavy-tailed, and sometimes it can be hard to identify a transformation that brings the data to normality. In these cases, it can be safer to ignore the raw abundances altogether, and work instead with ranks. We demonstrate this idea using a rank-transformed version of the data to perform PCA. First, we create a new matrix, representing the abundances by their ranks, where the microbe with the smallest in a sample gets mapped to rank 1, second smallest rank 2, etc.

```
plot_ordination(pslog, out.dpcoa.log, type = "species", color = "Phylum") +
  coord_fixed(sqrt(evals[2] / evals[1]))

evals <- out.wuf.log$values$Eigenvalues
plot_ordination(pslog, out.wuf.log, color = "age_binned",
               shape = "family_relationship") +
  coord_fixed(sqrt(evals[2] / evals[1])) +
  labs(col = "Binned Age", shape = "Litter")

plot_ordination(pslog, out.wuf.log, type = "species", color = "Phylum") +
  coord_fixed(sqrt(evals[2] / evals[1]))

abund <- otu_table(pslog)
abund_ranks <- t(apply(abund, 1, rank))
```

Naively using these ranks could make differences between pairs of low and high abundance microbes comparable. In the case where many bacteria are absent or present at trace amounts, an artificially large difference in rank could occur²¹ for minimally abundant taxa. To avoid this, all those microbes with rank below some threshold are set to be tied at 1. The ranks for the other microbes are shifted down, so there is no large gap between ranks. This transformation is illustrated in [Figure 15](#).

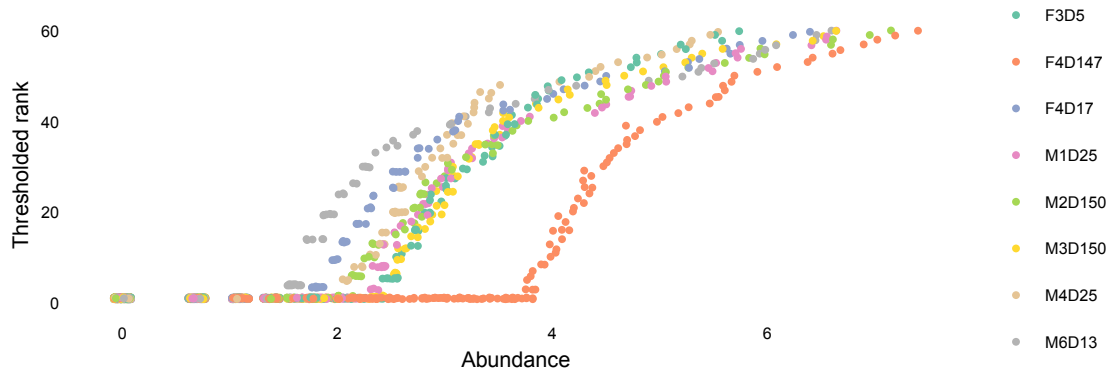


Figure 15. The association between abundance and rank, for a few randomly selected samples. The numbers of the y-axis are those supplied to PCA.

```
abund_ranks <- abund_ranks - 329
abund_ranks[abund_ranks < 1] <- 1
```

We can now perform PCA and study the resulting biplot, given in Figure 16. To produce annotation for this figure, we used the following block.

```
ranks_pca <- dudi.pca(abund_ranks, scannf = F, nf = 3)
row_scores <- data.frame(li = ranks_pca$li,
                        SampleID = rownames(abund_ranks))
col_scores <- data.frame(co = ranks_pca$co,
                        seq = colnames(abund_ranks))

tax <- tax_table(ps)@.Data %>%
  data.frame(stringsAsFactors = FALSE)
tax$seq <- rownames(tax)

main_orders <- c("Clostridiales", "Bacteroidales", "Lactobacillales",
                "Coriobacteriales")
tax$Order[!(tax$Order %in% main_orders)] <- "Other"
tax$Order <- factor(tax$Order, levels = c(main_orders, "Other"))
tax$otu_id <- seq_len(ncol(otu_table(ps)))

row_scores <- row_scores %>%
  left_join(sample_data(pslog))
col_scores <- col_scores %>%
  left_join(tax)
```

The results are similar to the PCoA analyses computed without applying a truncated-ranking transformation, reinforcing our confidence in the analysis on the original data.

```
abund_df <- melt(abund, value.name = "abund") %>%
  left_join(melt(abund_ranks, value.name = "rank"))
colnames(abund_df) <- c("sample", "seq", "abund", "rank")

abund_df <- melt(abund, value.name = "abund") %>%
  left_join(melt(abund_ranks, value.name = "rank"))
colnames(abund_df) <- c("sample", "seq", "abund", "rank")

sample_ix <- sample(1:nrow(abund_df), 8)
ggplot(abund_df %>%
  filter(sample %in% abund_df$sample[sample_ix])) +
  geom_point(aes(x = abund, y = rank, col = sample),
            position = position_jitter(width = 0.2), size = .7) +
  labs(x = "Abundance", y = "Thresholded rank") +
  scale_color_brewer(palette = "Set2")
```

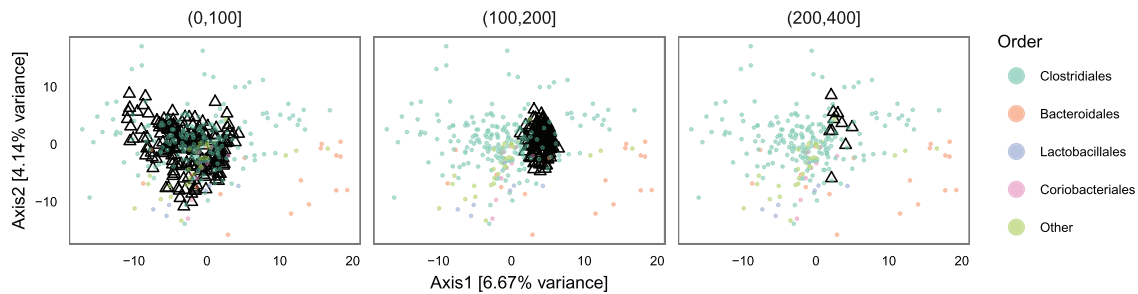


Figure 16. The biplot resulting from the PCA after the truncated-ranking transformation.

Canonical correspondence

Canonical Correspondence Analysis (CCpNA) is an approach to ordination of a species by sample table that incorporates supplemental information about the samples. As before, the purpose of creating biplots is to determine which types of bacterial communities are most prominent in different mouse sample types. It can be easier to interpret these biplots when the ordering between samples reflects sample characteristics – variations in age or litter status in the mouse data, for example – and this central to the design of CCpNA.

The function allows to create biplots where the positions of samples are determined by similarity in both species signatures and environmental characteristics; in contrast, principal components analysis or correspondence analysis only look at species signatures. More formally, it ensures that the resulting CCpNA directions lie in the span of the environmental variables; thorough treatments are available in [22,23](#).

Like PCoA and DPCoA, this method can be run using `ordinate` in *phyloseq*. In order to use supplemental sample data, it is necessary to provide an extra argument, specifying which of the features to consider – otherwise, *phyloseq* defaults to using all `sample_data` measurements when producing the ordination.

```
ps_ccpna <- ordinate(pslog, "CCA", formula = pslog ~ age_binned + family_relationship)
```

To access the positions for the biplot, we can use the `scores` function in the *vegan*. Further, to facilitate figure annotation, we also join the site scores with the environmental data in the `sample_data` slot. Of the 23 total taxonomic orders, we only explicitly annotate the four most abundant – this makes the biplot easier to read.

```
ps_scores <- vegan::scores(ps_ccpna)
sites <- data.frame(ps_scores$sites)
sites$SampleID <- rownames(sites)
sites <- sites %>%
  left_join(sample_data(ps))

species <- data.frame(ps_scores$species)
species$otu_id <- seq_along(colnames(otu_table(ps)))
species <- species %>%
  left_join(tax)

evals_prop <- 100 * (ranks_pca$eig / sum(ranks_pca$eig))
ggplot() +
  geom_point(data = row_scores, aes(x = li.Axis1, y = li.Axis2), shape = 2) +
  geom_point(data = col_scores, aes(x = 25 * co.Comp1, y = 25 * co.Comp2, col = Order),
            size = .3, alpha = 0.6) +
  scale_color_brewer(palette = "Set2") +
  facet_grid(~ age_binned) +
  guides(col = guide_legend(override.aes = list(size = 3))) +
  labs(x = sprintf("Axis1 [%s%% variance]", round(evals_prop[1], 2)),
       y = sprintf("Axis2 [%s%% variance]", round(evals_prop[2], 2))) +
  coord_fixed(sqrt(ranks_pca$eig[2] / ranks_pca$eig[1])) +
  theme(panel.border = element_rect(color = "#787878", fill = alpha("white", 0)))
```

Figure 17 and Figure 18 plot these annotated scores, splitting sites by their age bin and litter membership, respectively. We have labeled individual microbes that are outliers along the second CCpNA direction.

Evidently, the first CCpNA direction distinguishes between mice in the two main age bins. Circles on the left and right of the biplot represent microbes that are characteristic of younger and older mice, respectively. The second CCpNA direction splits off the few mice in the oldest age group; it also partially distinguishes between the two litters. These samples low in the second CCpNA direction have more of the outlier microbes than the others.

This CCpNA analysis supports our conclusions from the earlier ordinations – the main difference between the microbiome communities of the different mice lies along the age axis. However, in situations where the influence of environmental variables is not so strong, CCA can have more power in detecting such associations. In general, it can be applied whenever it is desirable to incorporate supplemental data, but in a way that (1) is less aggressive than supervised methods, and (2) can use several environmental variables at once.

```
evals_prop <- 100 * ps_ccpna$CCA$eig[1:2] / sum(ps_ccpna$CA$eig)
ggplot() +
  geom_point(data = sites, aes(x = CCA1, y = CCA2), shape = 2, alpha = 0.5) +
  geom_point(data = species, aes(x = CCA1, y = CCA2, col = Order), size = 0.5) +
  geom_text_repel(data = species %>% filter(CCA2 < -2),
    aes(x = CCA1, y = CCA2, label = otu_id),
    size = 1.5, segment.size = 0.1) +
  facet_grid(. ~ age_binned) +
  guides(col = guide_legend(override.aes = list(size = 3))) +
  labs(x = sprintf("Axis1 [%s%% variance]", round(evals_prop[1], 2)),
    y = sprintf("Axis2 [%s%% variance]", round(evals_prop[2], 2))) +
  scale_color_brewer(palette = "Set2") +
  coord_fixed(sqrt(ps_ccpna$CCA$eig[2] / ps_ccpna$CCA$eig[1])*0.33) +
  theme(panel.border = element_rect(color = "#787878", fill = alpha("white", 0)))
```

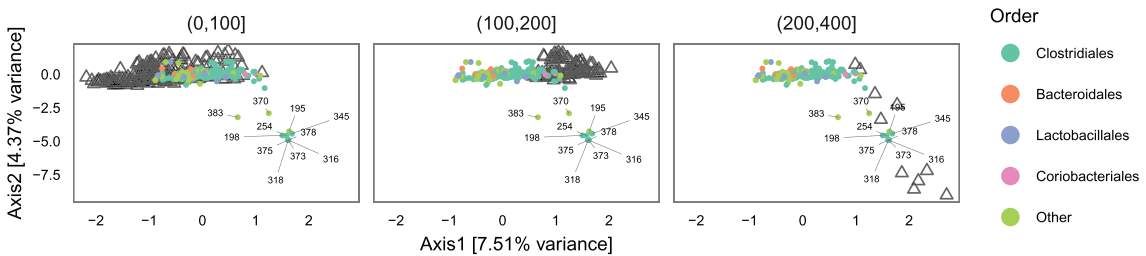


Figure 17. The mouse and bacteria scores generated by CCpNA. The sites and species are triangles and circles, respectively. The separate panels indicate different age groups.

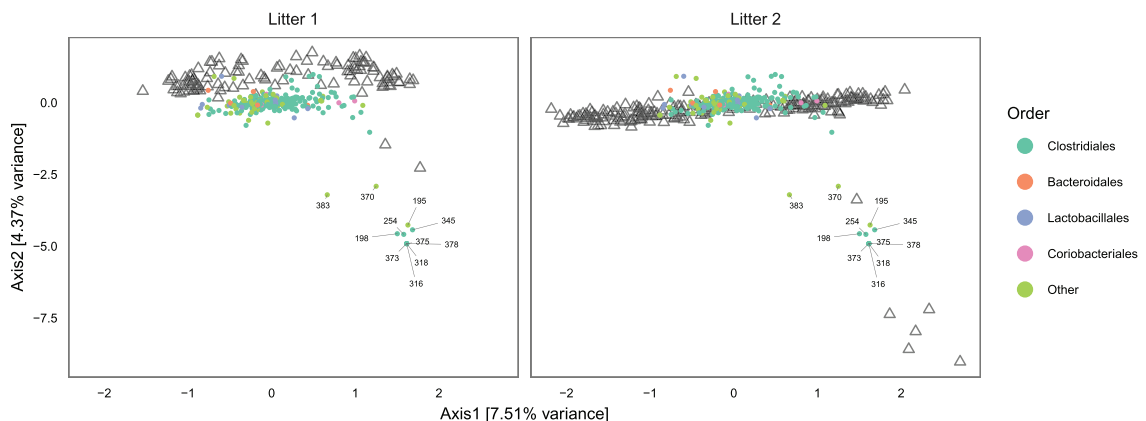


Figure 18. The analogue to Figure 17, faceting by litter membership rather than age bin.

```
ggplot() +
  geom_point(data = sites, aes(x = CCA1, y = CCA2), shape = 2, alpha = 0.5) +
  geom_point(data = species, aes(x = CCA1, y = CCA2, col = Order), size = 0.5) +
  geom_text_repel(data = species %>% filter(CCA2 < -2),
                 aes(x = CCA1, y = CCA2, label = otu_id),
                 size = 1.5, segment.size = 0.1) +
  facet_grid(. ~ family_relationship) +
  guides(col = guide_legend(override.aes = list(size = 3))) +
  labs(x = sprintf("Axis1 [%s%% variance]", round(evals_prop[1], 2)),
       y = sprintf("Axis2 [%s%% variance]", round(evals_prop[2], 2))) +
  scale_color_brewer(palette = "Set2") +
  coord_fixed(sqrt(ps_ccpna$CCA$eig[2] / ps_ccpna$CCA$eig[1])*0.45) +
  theme(panel.border = element_rect(color = "#787878", fill = alpha("white", 0)))
```

Supervised learning

Here we illustrate some supervised learning methods that can be easily run in R. The *caret* package wraps many prediction algorithms available in R and performs parameter tuning automatically. Since we saw that microbiome signatures change with age, we'll apply supervised techniques to try to predict age from microbiome composition.

We'll first look at Partial Least Squares (PLS)²⁴. The first step is to divide the data into training and test sets, with assignments done by mouse, rather than by sample, to ensure that the test set realistically simulates the collection of new data. Once we split the data, we can use the `train` function to fit the PLS model.

```
setup_example(c("phyloseq", "ggplot2", "caret", "plyr", "dplyr"))
sample_data(pslog)$age2 <- cut(sample_data(pslog)$age, c(0, 100, 400))
dataMatrix <- data.frame(age = sample_data(pslog)$age2, otu_table(pslog))
# take 8 mice at random to be the training set, and the remaining 4 the test set
trainingMice <- sample(unique(sample_data(pslog)$host_subject_id), size = 8)
inTrain <- which(sample_data(pslog)$host_subject_id %in% trainingMice)
training <- dataMatrix[inTrain,]
testing <- dataMatrix[-inTrain,]
plsFit <- train(age ~ ., data = training,
               method = "pls", preProc = "center")
```

Next we can predict class labels on the test set using the `predict` function and compare to the truth. We see that the method does an excellent job of predicting age.

```
plsClasses <- predict(plsFit, newdata = testing)
table(plsClasses, testing$age)

##
## plsClasses (0,100] (100,400]
## (0,100] 64 0
## (100,400] 2 46
```

As another example, we can try out random forests. This is run in exactly the same way as PLS, by switching the method argument from `pls` to `rf`. Random forests also perform well at the prediction task on this test set, though there are more old mice misclassified as young.

```
rfFit <- train(age ~ ., data = training, method = "rf",
              preProc = "center", proximity = TRUE)
rfClasses <- predict(rfFit, newdata = testing)
table(rfClasses, testing$age)

##
## rfClasses (0,100] (100,400]
## (0,100] 65 7
## (100,400] 1 39
```


To interpret these PLS and random forest results, it is standard to produce biplots and proximity plots, respectively. The code below extracts coordinates and supplies annotation for points to include on the PLS biplot.

```
pls_biplot <- list("loadings" = loadings(plsFit$finalModel),
                 "scores" = scores(plsFit$finalModel))
class(pls_biplot$scores) <- "matrix"

pls_biplot$scores <- data.frame(sample_data(pslog)[inTrain, ],
                               pls_biplot$scores)

tax <- tax_table(ps)@.Data %>%
  data.frame(stringsAsFactors = FALSE)
main_orders <- c("Clostridiales", "Bacteroidales", "Lactobacillales",
                "Coriobacteriales")
tax$Order[!(tax$Order %in% main_orders)] <- "Other"
tax$Order <- factor(tax$Order, levels = c(main_orders, "Other"))
class(pls_biplot$loadings) <- "matrix"
pls_biplot$loadings <- data.frame(tax, pls_biplot$loadings)
```

The resulting biplot is displayed in [Figure 19](#); it can be interpreted similarly to earlier ordination diagrams, with the exception that the projection is chosen with an explicit reference to the binned age variable. Specifically, PLS identifies a subspace to maximize discrimination between classes, and the biplot displays sample projections and RSV coefficients with respect to this subspace.

```
ggplot() +
  geom_point(data = pls_biplot$scores,
            aes(x = Comp.1, y = Comp.2), shape = 2) +
  geom_point(data = pls_biplot$loadings,
            aes(x = 25 * Comp.1, y = 25 * Comp.2, col = Order),
            size = 0.3, alpha = 0.6) +
  scale_color_brewer(palette = "Set2") +
  labs(x = "Axis1", y = "Axis2", col = "Binned Age") +
  guides(col = guide_legend(override.aes = list(size = 3))) +
  facet_grid(~ age2) +
  theme(panel.border = element_rect(color = "#787878", fill = alpha("white", 0)))
```

A random forest proximity plot is displayed in [Figure 20](#). To generate this representation, a distance is calculated between samples based on how frequently sample occur in the same tree partition in the random forest's bootstrapping procedure. If a pair of samples frequently occur in the same partition, the pair is assigned a low distance. The resulting distances are then input to PCoA, giving a glimpse into the random forests' otherwise complex classification mechanism. The separation between classes is clear, and manually inspecting points would reveal what types of samples are easier or harder to classify.

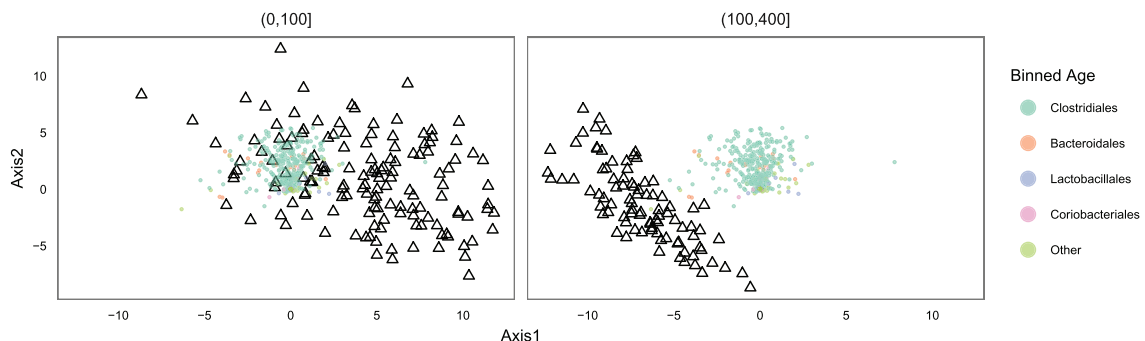


Figure 19. PLS produces a biplot representation designed to separate samples by a response variable.

```
rf_prox <- cmdscale(1 - rfFit$finalModel$proximity) %>%
  data.frame(sample_data(pslog)[inTrain, ])

ggplot(rf_prox) +
  geom_point(aes(x = X1, y = X2, col = age_binned),
            size = .4, alpha = 0.6) +
  scale_color_manual(values = c("#A66EB8", "#238DB5", "#748B4F")) +
  guides(col = guide_legend(override.aes = list(size = 3))) +
  labs(col = "Binned Age", x = "Axis1", y = "Axis2")
```

To further understand the fitted random forest model, we identify the microbe with the most influence in the random forest prediction. This turns out to be a microbe in family *Lachnospiraceae* and genus *Roseburia*. Figure 21 plots its abundance across samples; we see that it is uniformly very low from age 0 to 100 days and much higher from age 100 to 400 days.

```
as.vector(tax_table(ps)[which.max(importance(rfFit$finalModel)), c("Family", "Genus")])

## [1] "Lachnospiraceae" NA

impOtu <- as.vector(otu_table(pslog)[,which.max(importance(rfFit$finalModel))])
maxImpDF <- data.frame(sample_data(pslog), abund = impOtu)
ggplot(maxImpDF) + geom_histogram(aes(x = abund)) +
  facet_grid(age2 ~ .) +
  labs(x = "Abundance of discriminative bacteria", y = "Number of samples")
```

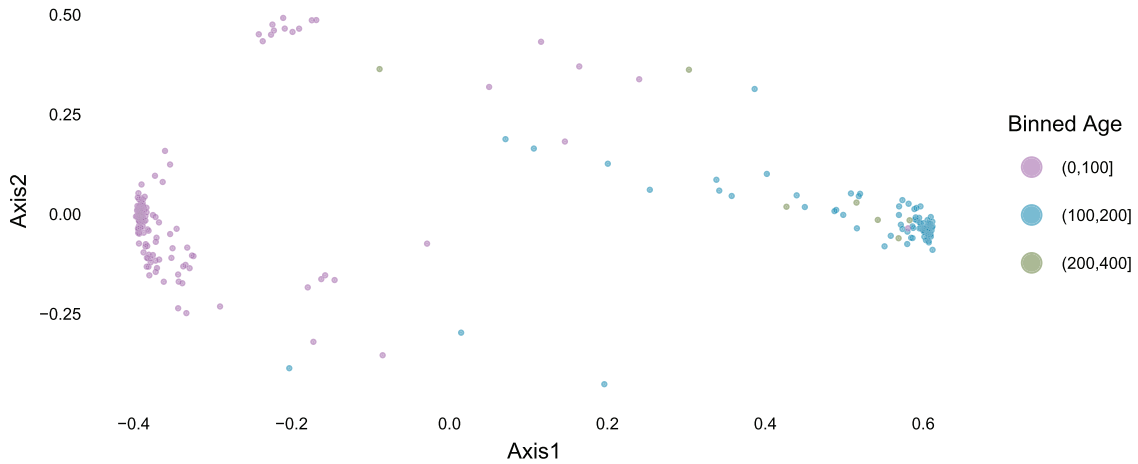


Figure 20. The random forest model determines a distance between samples, which can be input into PCoA to produce a proximity plot.

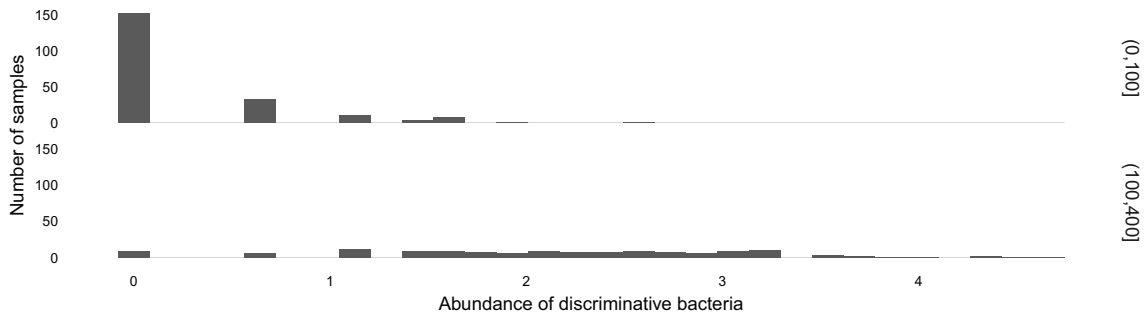


Figure 21. A bacteria in genus *Roseburia* becomes much more abundant in the 100 to 400 day bin.

Graph-based visualization and testing

Creating and plotting graphs

Phyloseq has functionality for creating graphs based on thresholding a distance matrix, and the resulting networks can be plotting using the *ggnetwork*. This package overloads the ggplot syntax, so you can use the function ggplot on an igraph object and add `geom_edges` and `geom_nodes` geoms to plot the network. To be able to color the nodes or edges a certain way, we need to add these attributes to the igraph object. Below we create a network by thresholding the Jaccard dissimilarity (the default distance for the function `make_network`) at .35, and then we add an attribute to the vertices indicating which mouse the sample came from and which litter the mouse was in. Then we can plot the network with the coloring by mouse and shape by litter. We see the resulting network in [Figure 22](#), and we can see that there is grouping of the samples by both mouse and litter.

```
setup_example(c("igraph", "phyloseq", "phyloseqGraphTest", "ggnetwork", "intergraph", "gridExtra"))

net <- make_network(ps, max.dist=0.35)
sampledata <- data.frame(sample_data(ps))
V(net)$id <- sampledata[names(V(net)), "host_subject_id"]
V(net)$litter <- sampledata[names(V(net)), "family_relationship"]

ggplot(net, aes(x = x, y = y, xend = xend, yend = yend), layout = "fruchtermanreingold") +
  geom_edges(color = "darkgray") +
  geom_nodes(aes(color = id, shape = litter)) +
  theme(axis.text = element_blank(), axis.title = element_blank(),
        legend.key.height = unit(0.5, "line")) +
  guides(col = guide_legend(override.aes = list(size = .25)))
```

Graph-based two-sample tests

Graph-based two-sample tests were introduced by Friedman and Rafsky²⁵ as a generalization of the Wald-Wolfowitz runs test. They proposed the use of a minimum spanning tree (MST) based on the distances between the samples, and then counting the number of edges on the tree that were between samples in different groups. It is not necessary to use a minimum spanning tree (MST), the graph made by linking nearest neighbors²⁶ or distance thresholding can also be used as the input graph. No matter what graph we build between the samples, we can approximate a null distribution by permuting the labels of the nodes of the graph.

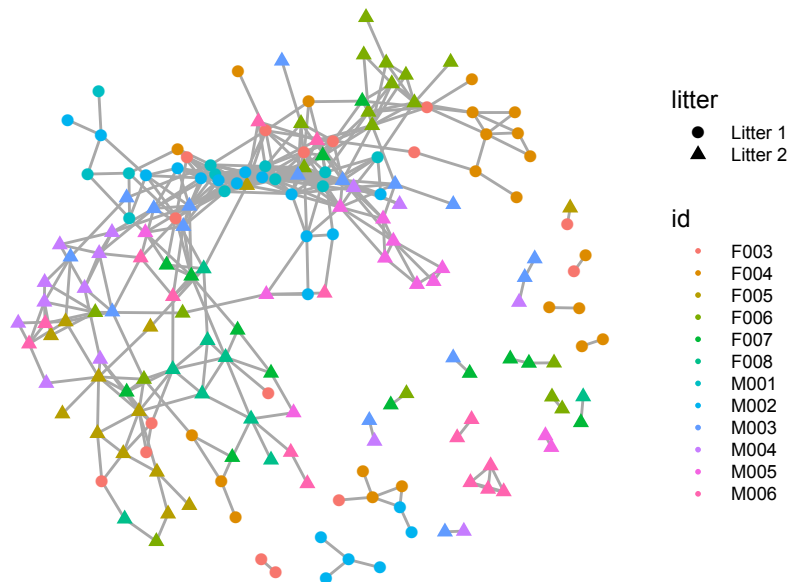


Figure 22. A network created by thresholding the Jaccard dissimilarity matrix. The colors represent which mouse the sample came from and the shape represents which litter the mouse was in.

Minimum Spanning Tree (MST)

We first perform a test using an MST with Jaccard dissimilarity. We want to know whether the two litters (family_relationship) come from the same distribution. Since there is a grouping in the data by individual (host_subject_id), we can't simply permute all the labels, we need to maintain this nested structure – this is what the grouping argument does. Here we permute the family_relationship labels but keep the host_subject_id structure intact.

This test has a small p -value, and we reject the null hypothesis that the two samples come from the same distribution. From the plot of the minimum spanning tree in Figure 23, we see by eye that the samples group by litter more than we would expect by chance.

```
gt <- graph_perm_test(ps, "family_relationship", grouping = "host_subject_id",
                     distance = "jaccard", type = "mst")

gt$pval

## [1] 0.01

plotNet1=plot_test_network(gt) + theme(legend.text = element_text(size = 8),
                                       legend.title = element_text(size = 9))
plotPerm1=plot_permutations(gt)
grid.arrange(ncol = 2, plotNet1, plotPerm1)
```

Nearest neighbors

The k -nearest neighbors graph is obtained by putting an edge between two samples whenever one of them is in the set of k -nearest neighbors of the other. We see from Figure 24 that if a pair of samples has an edge between them in the nearest neighbor graph, they are overwhelmingly likely to be in the same litter.

```
gt <- graph_perm_test(ps, "family_relationship", grouping = "host_subject_id",
                     distance = "jaccard", type = "knn", knn = 1)

plotNet2=plot_test_network(gt) + theme(legend.text = element_text(size = 8),
                                       legend.title = element_text(size = 9))
plotPerm2=plot_permutations(gt)
grid.arrange(ncol = 2, plotNet2, plotPerm2)
```

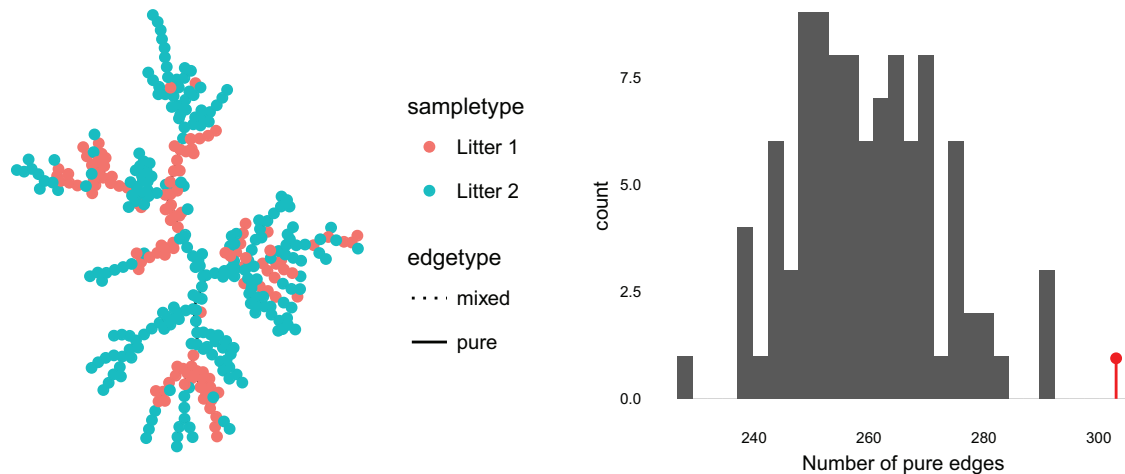


Figure 23. The graph and permutation histogram obtained from the minimal spanning tree with Jaccard similarity.

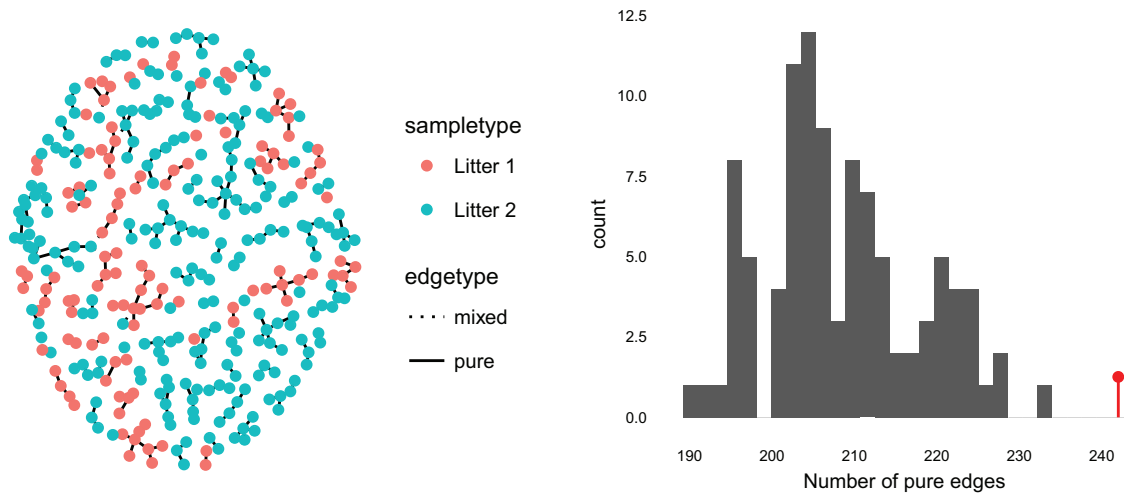


Figure 24. The graph and permutation histogram obtained from a nearest-neighbor graph with Jaccard similarity.

We can also compute the analogous test with two-nearest neighbors and the Bray-Curtis dissimilarity. The results are not shown, but the code is given below.

```
gt <- graph_perm_test(ps, "family_relationship",
  grouping = "host_subject_id",
  distance = "bray", type = "knn", knn = 2)
```

Distance threshold

Another way of making a graph between samples is to threshold the distance matrix, this is called a geometric graph²⁷. The testing function lets the user supply an absolute distance threshold; alternatively, it can find a distance threshold such that there are a prespecified number of edges in the graph. Below we use a distance threshold so that there are 720 edges in the graph, or twice as many edges as there are samples. Heuristically, the graph we obtain isn't as good, because there are many singletons. This reduces power, and so if the thresholded graph has this many singletons it is better to either modify the threshold or consider a MST or k-nearest neighbors graph.

```
gt <- graph_perm_test(ps, "family_relationship", grouping = "host_subject_id",
  distance = "bray", type = "threshold.nedges", nedges = 720,
  keep.isolates = FALSE)

plotNet3= plot_test_network(gt) + theme(legend.text = element_text(size = 8),
  legend.title = element_text(size = 9))
plotPerm3=plot_permutations(gt)
grid.arrange(ncol = 2, plotNet3, plotPerm3)
```

Then we can try a similar procedure with an increased number of edges to see what happens (code given below but output not shown).

```
gt <- graph_perm_test(ps, "family_relationship", grouping = "host_subject_id",
  distance = "bray", type = "threshold.nedges", nedges = 2000,
  keep.isolates = FALSE)
```

Linear modeling

It is often of interest to evaluate the degree to which microbial community diversity reflects characteristics of the environment from which it was sampled. Unlike ordination, the purpose of this analysis is not to develop a representation of many bacteria with respect to sample characteristics; rather, it is to describe how a single measure of overall community structure (In particular, it need not be limited to diversity – defining univariate measures of community stability is also common, for example.) is associated with sample characteristics. This is a somewhat simpler statistical goal, and can

be addressed through linear modeling, for which there are a range of approaches in R. As an example, we will use a mixed-effects model to study the relationship between mouse microbial community diversity and the age and litter variables that have been our focus so far. This choice was motivated by the observation that younger mice have noticeably lower Shannon diversities, but that different mice have different baseline diversities. The mixed-effects model is a starting point for formalizing this observation.

We first compute the Shannon diversity associated with each sample and join it with sample annotation.

```
setup_example(c("phyloseq", "ggplot2", "nlme", "dplyr", "vegan", "reshape2"))
ps_alpha_div <- estimate_richness(ps, split = TRUE, measure = "Shannon")
ps_alpha_div$SampleID <- rownames(ps_alpha_div) %>%
  as.factor()
ps_samp <- sample_data(ps) %>%
  unclass() %>%
  data.frame() %>%
  left_join(ps_alpha_div, by = "SampleID") %>%
  melt(measure.vars = "Shannon",
       variable.name = "diversity_measure",
       value.name = "alpha_diversity")

# reorder's facet from lowest to highest diversity
diversity_means <- ps_samp %>%
  group_by(host_subject_id) %>%
  summarise(mean_div = mean(alpha_diversity)) %>%
  arrange(mean_div)
ps_samp$host_subject_id <- factor(ps_samp$host_subject_id,
                                diversity_means$host_subject_id)
```

We use the *nlme* to estimate coefficients for this mixed-effects model.

```
alpha_div_model <- lme(fixed = alpha_diversity ~ age_binned, data = ps_samp,
                      random = ~ 1 | host_subject_id)
```

To interpret the results, we compute the prediction intervals for each mouse by age bin combination. These are displayed in Figure 26. The intervals reflect the slight shift in average diversity across ages, but the wide intervals emphasize that more samples would be needed before this observation can be confirmed.

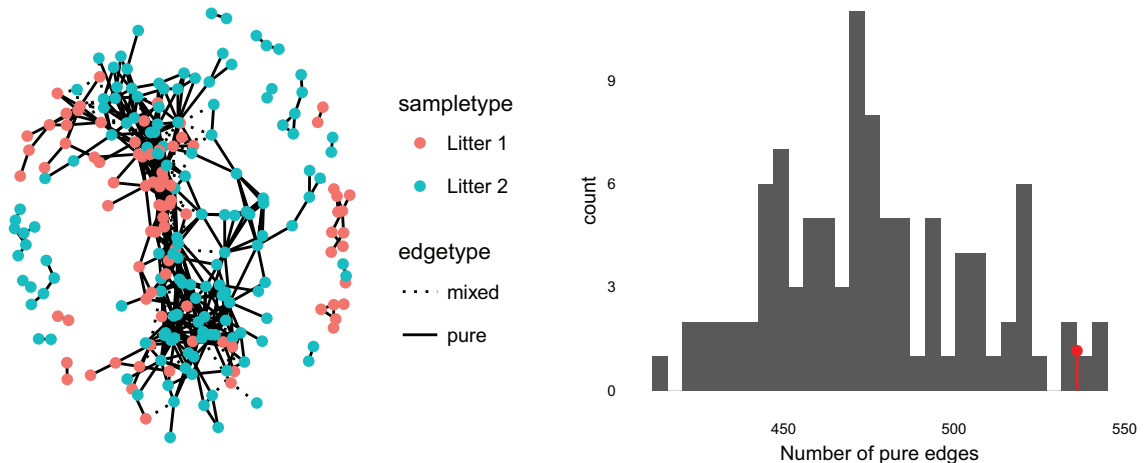


Figure 25. Testing using a Bray-Curtis distance thresholded graph.

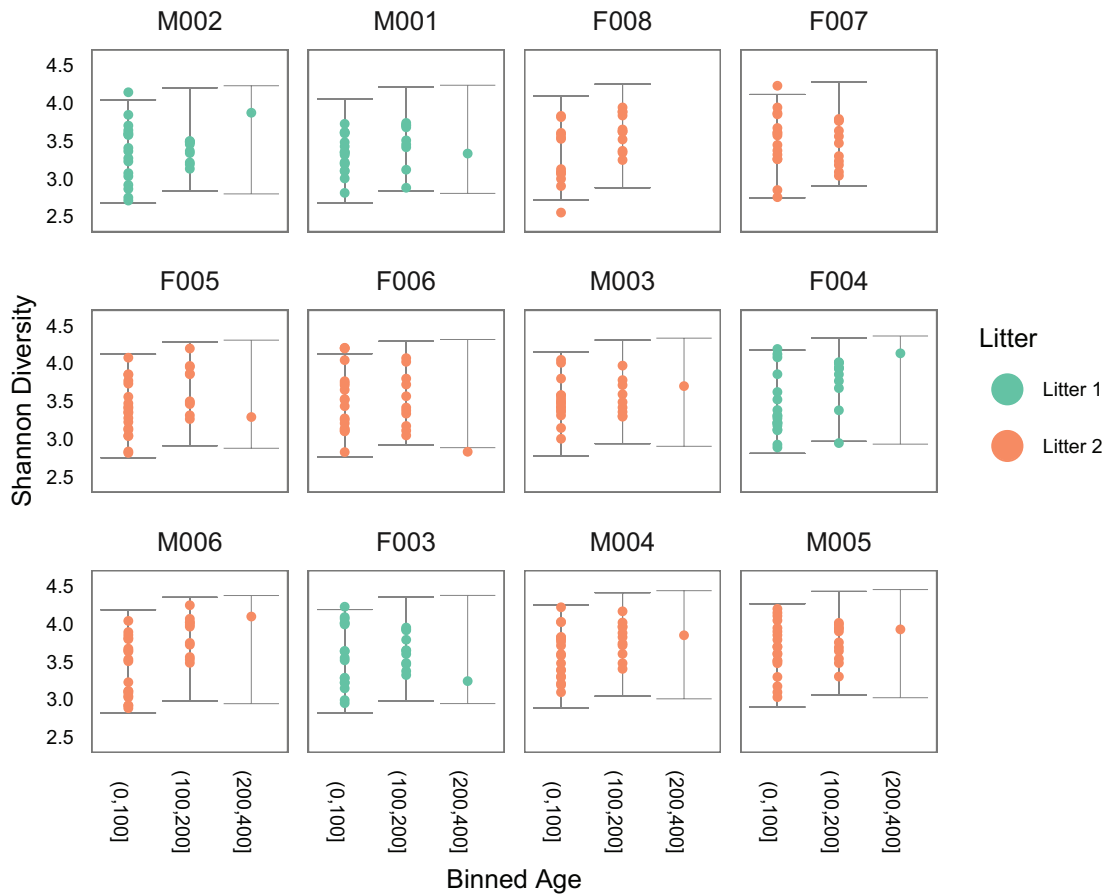


Figure 26. Each point represents the Shannon diversity at one timepoint for a mouse; each panel is a different mouse. The timepoints have been split into three bins, according to the mice's age. The prediction intervals obtained from mixed-effects modeling are overlaid.

```

new_data <- expand.grid(host_subject_id = levels(ps_samp$host_subject_id),
                      age_binned = levels(ps_samp$age_binned))
new_data$pred <- predict(alpha_div_model, newdata = new_data)
X <- model.matrix(eval(eval(alpha_div_model$call$fixed)[-2]),
                 new_data[,-ncol(new_data)])
pred_var_fixed <- diag(X %*% alpha_div_model$varFix %*% t(X))
new_data$pred_var <- pred_var_fixed + alpha_div_model$sigma ^ 2

# fitted values, with error bars
ggplot(ps_samp %>% left_join(new_data)) +
  geom_errorbar(aes(x = age_binned, ymin = pred - 2 * sqrt(pred_var),
                  ymax = pred + 2 * sqrt(pred_var)),
              col = "#858585", size = .1) +
  geom_point(aes(x = age_binned, y = alpha_diversity,
                col = family_relationship), size = 0.8) +
  facet_wrap(~host_subject_id) +
  scale_y_continuous(limits = c(2.4, 4.6), breaks = seq(0, 5, .5)) +
  scale_color_brewer(palette = "Set2") +
  labs(x = "Binned Age", y = "Shannon Diversity", color = "Litter") +
  guides(col = guide_legend(override.aes = list(size = 4))) +
  theme(panel.border = element_rect(color = "#787878", fill = alpha("white", 0)),
        axis.text.x = element_text(angle = -90, size = 6),
        axis.text.y = element_text(size = 6))

```

Hierarchical multiple testing

Hypothesis testing can be used to identify individual microbes whose abundance relates to sample variables of interest. A standard approach is to compute a test statistic for each bacteria individually, measuring its association with sample characteristics, and then jointly adjust p -values to ensure a False Discovery Rate upper bound. This can be accomplished through the Benjamini-Hochberg procedure, for example²⁸. However, this procedure does not exploit any structure among the tested hypotheses – for example, it is likely that if one *Ruminococcus* species is strongly associated with age, then others are as well. To integrate this information^{29,30}, proposed a hierarchical testing procedure, where taxonomic groups are only tested if higher levels are found to be associated. In the case where many related species have a slight signal, this pooling of information can increase power.

We apply this method to test the association between microbial abundance and age. This provides a complementary view of the earlier analyses, identifying individual bacteria that are responsible for the differences between young and old mice.

We digress briefly from hierarchical testing to describe an alternative form of count normalization. Rather than working with the logged data as in our earlier analysis, we consider a variance stabilizing transformation introduced by 31 for RNA-seq data and in 32 for 16S rRNA generated count data and available in the *DESeq2* package. The two transformations yield similar sets of significant microbes. One difference is that, after accounting for size factors, the histogram of row sums for DESeq is more spread out in the lower values, refer to Figure 27. This is the motivation of using such a transformation, although for high abundance counts, it is equivalent to the log, for lower and mid range abundances it does not crush the data and yields more powerful results. The code below illustrates the mechanics of computing *DESeq2*'s variance stabilizing transformation on a *phyloseq* object.

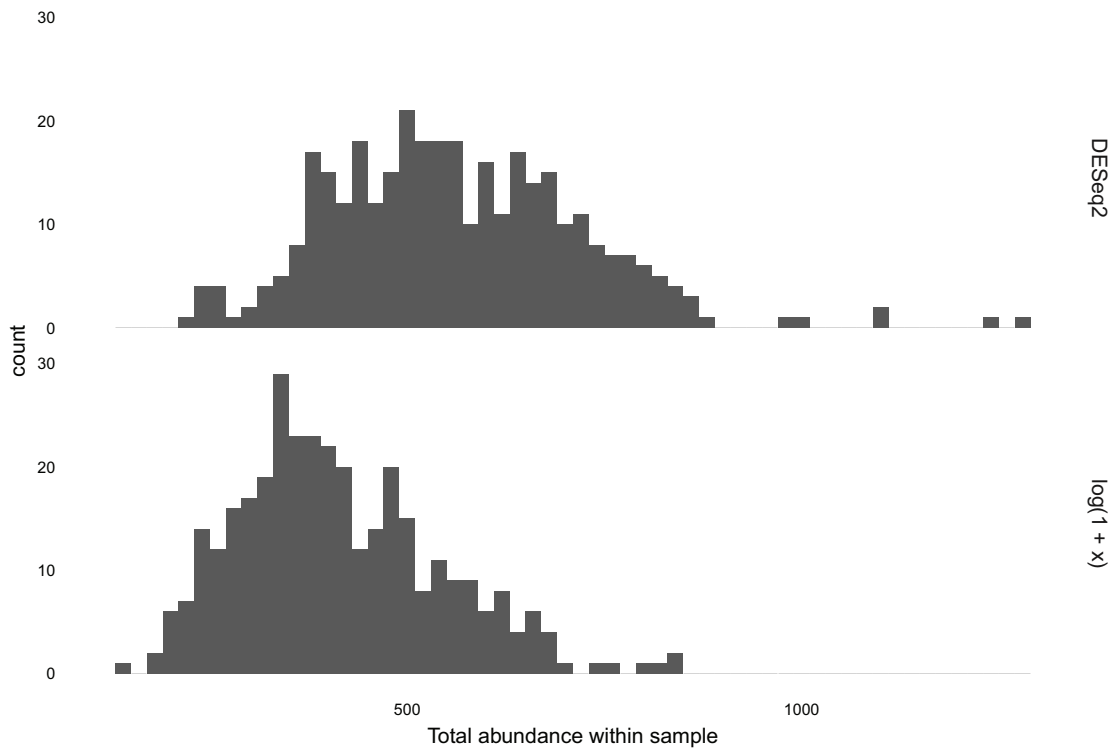


Figure 27. The histogram on the top gives the total DESeq2 transformed abundance within each sample. The bottom histogram is the same as that in Figure 7, and is included to facilitate comparison.


```

setup_example(c("phyloseq", "structSSI", "plyr", "dplyr", "reshape2",
               "ggplot2", "DESeq2"))
ps_dds <- phyloseq_to_deseq2(ps, ~ age_binned + family_relationship)
varianceStabilizingTransformation(ps_dds, blind = TRUE, fitType = "parametric")

## class: DESeqTransform
## dim: 389 344
## metadata(1): version
## assays(1): ' '
## rownames(389):
##   GCGAGCGTTATCCGGATTTATTGGGTTTTAAAGGGTGCGCAGGCGGAAGATCAAGTCAGCGGTAAAATTGAGAG
GCTCAACCTCTTCGAGCCGTTGAACTGGTTTTTC
##   GCGAGCGTTATCCGGATTTATTGGGTTTTAAAGGGTGCGCAGGCGGACTCTCAAGTCAGCGGTCAAATCGCGGG
GCTCAACCCCGTTCCGCCGTTGAACTGGGAGCC
##   ...
##   GCTAGCGTTGTTCCGGAATTACTGGGCGTAAAGCGCGTGTAGGCGGTTTGCCAAGTTGGGTGTGAAAGCCTTGA
GCTCAACTCAAGAAATGCACTCAGTACTGG
##   GCAAGCGTTACTCGGAATCACTGGGCGTAAAGAGCGCGTAGGCGGGATAGTCAGTCAGGTGTGAAATCCTATG
GCTTAACCATAGAACTGCATTTGAACTAC
## rowData names(5): baseMean baseVar allZero dispGeneEst dispFit
## colnames(344): F3D0 F3D1 ... M6D8 M6D9
## colData names(17): collection_date biome ... age_binned sizeFactor

ps_dds <- estimateSizeFactors(ps_dds)
ps_dds <- estimateDispersions(ps_dds)
abund <- getVarianceStabilizedData(ps_dds)

```

We use the *structSSI* to perform the hierarchical testing³³. For more convenient printing, we first shorten the names of each microbe.

```

short_names <- substr(rownames(abund), 1, 5)%>%
  make.names(unique = TRUE)
rownames(abund) <- short_names

```

Unlike standard multiple hypothesis testing, the hierarchical testing procedure needs univariate tests for each higher-level taxonomic group, not just every bacteria. A helper function, *treePValues*, is available for this; it expects an edgelist encoding parent-child relationships, with the first row specifying the root node.

```

e1 <- phy_tree(pslog)$edge
e10 <- e1
e10 <- e10[nrow(e1):1, ]
e1_names <- c(short_names, seq_len(phy_tree(pslog)$Nnode))
e1[, 1] <- e1_names[e10[, 1]]
e1[, 2] <- e1_names[as.numeric(e10[, 2])]
unadj_p <- treePValues(e1, abund, sample_data(pslog)$age_binned)

```

We can now correct *p*-value using the hierarchical testing procedure. The test results are guaranteed to control several variants of FDR control, but at different levels; we defer details to [29,30,33](#).

```

hfdr_res <- hFDR.adjust(unadj_p, e1, .75)
summary(hfdr_res)

## Number of hypotheses: 776
## Number of tree discoveries: 461
## Estimated tree FDR: 1
## Number of tip discoveries: 219
## Estimated tips FDR: 1
##
## hFDR adjusted p-values:

```

```
##          unadjp      adjp adj.significance
## GCAAG.71  1.01e-67  2.02e-67          ***
## GCAAG.96  1.33e-67  2.65e-67          ***
## GCAAG.190 1.10e-58  2.21e-58          ***
## GCAAG.254 2.01e-48  4.03e-48          ***
## GCAAG.150 4.90e-46  9.80e-46          ***
## GCGAG.2   5.28e-38  1.06e-37          ***
## GCAAG.170 6.54e-38  1.31e-37          ***
## GCAAG.1   1.16e-35  2.32e-35          ***
## GCAAG.146 4.83e-33  9.66e-33          ***
## GCGAG.21  1.40e-28  2.79e-28          ***

abund_sums <- rbind(data.frame(sum = colSums(abund),
                               sample = colnames(abund),
                               type = "DESeq2"),
                   data.frame(sum = rowSums(otu_table(pslog)),
                               sample = rownames(otu_table(pslog)),
                               type = "log(1 + x)"))

ggplot(abund_sums) +
  geom_histogram(aes(x = sum), binwidth = 20) +
  facet_grid(type ~ .) +
  xlab("Total abundance within sample")

## [only 10 most significant hypotheses shown]
## ---
## Signif. codes: 0 '***' 0.015 '**' 0.15 '*' 0.75 '.' 1.5 '-' 1

plot(hfdr_res, height = 5000) # opens in a browser
```

The plot opens in a new browser – a static screenshot of a subtree is displayed in [Figure 28](#). Nodes are shaded according to *p*-values, from blue to orange, representing the strongest to weakest associations. Grey nodes were never tested, to focus power on more promising subtrees. Scanning the full tree, it becomes clear that the association between age group and bacterial abundance is present in only a few isolated taxonomic groups, but that it is quite strong in those groups. To give context to these results, we can retrieve the taxonomic identity of the rejected hypotheses.

```
options(width=100)
tax <- tax_table(pslog)[, c("Family", "Genus")] %>%
  data.frame()
tax$seq <- short_names

hfdr_res@p.vals$seq <- rownames(hfdr_res@p.vals)
tax %>%
  left_join(hfdr_res@p.vals) %>%
  arrange(adjp) %>% head(10)

##          Family      Genus      seq unadjp      adjp adj.significance
## 1  Lachnospiraceae  Roseburia GCAAG.71 1.01e-67  2.02e-67          ***
## 2  Lachnospiraceae      <NA> GCAAG.96 1.33e-67  2.65e-67          ***
## 3  Lachnospiraceae Clostridium_XlVa GCAAG.190 1.10e-58  2.21e-58          ***
## 4  Lachnospiraceae      <NA> GCAAG.254 2.01e-48  4.03e-48          ***
## 5  Lachnospiraceae Clostridium_XlVa GCAAG.150 4.90e-46  9.80e-46          ***
## 6  Porphyromonadaceae      <NA> GCGAG.2   5.28e-38  1.06e-37          ***
## 7  Lachnospiraceae Clostridium_XlVa GCAAG.170 6.54e-38  1.31e-37          ***
## 8      <NA>      <NA> GCAAG.1   1.16e-35  2.32e-35          ***
## 9  Lachnospiraceae      <NA> GCAAG.146 4.83e-33  9.66e-33          ***
## 10 Porphyromonadaceae      <NA> GCGAG.21  1.40e-28  2.79e-28          ***
```

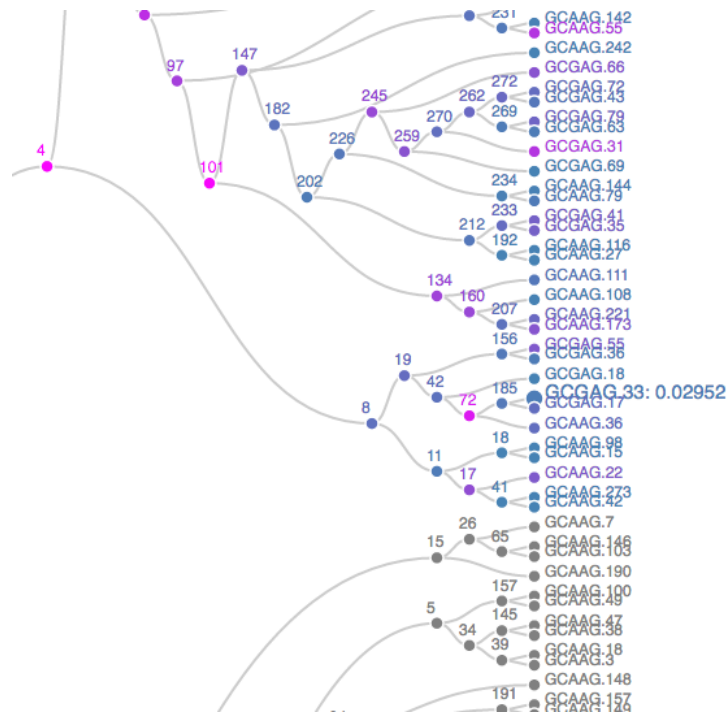


Figure 28. A screenshot of a subtree with many differentially abundant bacteria, as determined by the hierarchical testing procedure. Currently the user is hovering over the node associated with bacteria GCGAG.33; this causes the adjusted p -value (0.0295) to appear.

It seems that the most strongly associated bacteria all belong to family *Lachnospiraceae*, which is consistent with the random forest results in Section.

Multitable techniques

Many microbiome studies attempt to quantify variation in the microbial, genomic, and metabolic measurements across different experimental conditions. As a result, it is common to perform multiple assays on the same biological samples and ask what features – bacteria, genes, or metabolites, for example – are associated with different sample conditions. There are many ways to approach these questions, which to apply depends on the study's focus.

Here, we will focus on one specific workflow that uses sparse Canonical Correlation Analysis (sparse CCA), a method well-suited to both exploratory comparisons between samples and the identification of features with interesting variation. We will use an implementation from the *PMA*³⁴.

Since the mouse data used above included only a single table, we use a new data set, collected by the study³⁵. There are two tables here, one for bacteria and another with metabolites. 12 samples were obtained, each with measurements at 637 m/z values and 20,609 OTUs; however, about 96% of the entries of the microbial abundance table are exactly zero. The code below retrieves this data.

```
setup_example(c("phyloseq", "ggplot2", "reshape2", "ade4", "PMA",
               "genefilter", "ggrepel"))

metab_path <- "data/metabolites.csv"
microbe_path <- "data/microbe.rda"
metab <- read.csv(metab_path, row.names = 1)
metab <- as.matrix(metab)
microbe <- get(load(microbe_path))
```

Our preprocessing mirrors that done for the mouse data. We first filter down to microbes and metabolites of interest, removing those that are zero across many samples. Then, we transform them to weaken the heavy tails.

```
keep_ix <- rowSums(metab == 0) <= 3
metab <- metab[keep_ix, ]
microbe <- prune_taxa(taxa_sums(microbe) > 4, microbe)
microbe <- filter_taxa(microbe, filterfun(kOverA(3, 2)), TRUE)

metab <- log(1 + metab, base = 10)
X <- otu_table(microbe)@.Data
X[X > 50] <- 50
```

We can now apply sparse CCA. This method compares sets of features across high-dimensional data tables, where there may be more measured features than samples. In the process, it chooses a subset of available features that capture the most covariance – these are the features that reflect signals present across multiple tables. We then apply PCA to this selected subset of features. In this sense, we use sparse CCA as a screening procedure, rather than as an ordination method.

Our implementation is below. The parameters `penaltyx` and `penaltyz` are sparsity penalties. Larger values of `penaltyx` will result in fewer selected microbes, similarly `penaltyz` modulates the number of selected metabolites. We tune them manually to facilitate subsequent interpretation – we generally prefer more sparsity than the default parameters would provide.

```
cca_res <- CCA(t(X), t(metab), penaltyx = .15, penaltyz = .15)

## 123456789101112131415

cca_res

## Call: CCA(x = t(X), z = t(metab), penaltyx = 0.15, penaltyz = 0.15)
##
##
## Num non-zeros u's: 5
## Num non-zeros v's: 15
## Type of x: standard
## Type of z: standard
## Penalty for x: L1 bound is 0.15
## Penalty for z: L1 bound is 0.15
## Cor(Xu,Zv): 0.974
```

With these parameters, 5 microbes and 15 metabolites have been selected, based on their ability to explain covariation between tables. Further, these 20 features result in a correlation of 0.974 between the two tables. We interpret this to mean that the microbial and metabolomic data reflect similar underlying signals, and that these signals can be approximated well by the 20 selected features. Be wary of the correlation value, however, since the scores are far from the usual bivariate normal cloud. Further, note that it is possible that other subsets of features could explain the data just as well – sparse CCA has minimized redundancy across features, but makes no guarantee that these are the “true” features in any sense.

Nonetheless, we can still use these 20 features to compress information from the two tables without much loss. To relate the recovered metabolites and OTUs to characteristics of the samples on which they were measured, we use them as input to an ordinary PCA.

```
combined <- cbind(t(X[cca_res$u != 0, ]),
                 t(metab[cca_res$v != 0, ]))
pca_res <- dudi.pca(combined, scannf = F, nf = 3)
```

```
# annotation
genotype <- substr(rownames(pca_res$li), 1, 2)
sample_type <- substr(rownames(pca_res$l1), 3, 4)
feature_type <- grepl("\\.", colnames(combined))
feature_type <- ifelse(feature_type, "Metabolite", "OTU")

sample_info <- data.frame(pca_res$li, genotype, sample_type)
feature_info <- data.frame(pca_res$c1,
                          feature = substr(colnames(combined), 1, 6))
```

Figure 29 displays a PCA triplot, where we show different types of samples and the multidomain features (Metabolites and OTUs). This allows comparison across the measured samples – triangles for Knockout and circles for wild type – and characterizes the influence the different features – diamonds with text labels. For example, we see that the main variation in the data is across PD and ST samples, which correspond to the different diets. Further, large values of 15 of the features are associated with ST status, while small values for 5 of them indicate PD status. The advantage of the sparse CCA screening is now clear – we can display most of the variation across samples using a relatively simple plot, and can avoid plotting the hundreds of additional points that would be needed to display all of the features.

```
ggplot() + geom_point(data = sample_info,
                    aes(x = Axis1, y = Axis2, col = sample_type, shape = genotype), size = 3) +
  geom_label_repel(data = feature_info,
                 aes(x = 5.5 * CS1, y = 5.5 * CS2, label = feature, fill = feature_type),
                 size = 2, segment.size = 0.3,
                 label.padding = unit(0.1, "lines"), label.size = 0) +
  geom_point(data = feature_info,
            aes(x = 5.5 * CS1, y = 5.5 * CS2, fill = feature_type),
            size = 1, shape = 23, col = "#383838") +
  scale_color_brewer(palette = "Set2") +
  scale_fill_manual(values = c("#a6d854", "#e78ac3")) +
  guides(fill = guide_legend(override.aes = list(shape = 32, size = 0))) +
  coord_fixed(sqrt(pca_res$eig[2] / pca_res$eig[1])) +
  labs(x = sprintf("Axis1 [%s%% Variance]",
                  100 * round(pca_res$eig[1] / sum(pca_res$eig), 2)),
       y = sprintf("Axis2 [%s%% Variance]",
                  100 * round(pca_res$eig[2] / sum(pca_res$eig), 2)),
       fill = "Feature Type", col = "Sample Type")
```

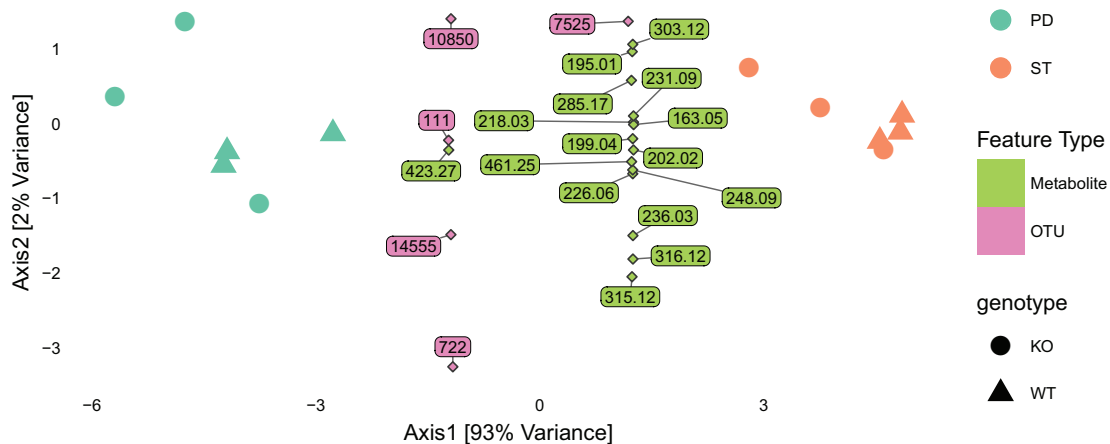


Figure 29. A PCA triplot produced from the CCA selected features in from multiple data types (metabolites and OTUs). Note that we have departed from our convention of fixing the aspect ratio as the second axis represents very little of the variability and the plot would actually become unreadable.

Operation

The programs and source for this article can be run using version 3.3 of R and version 3.3 of Bioconductor.

Conclusions

We have shown how a complete workflow in R is now available to denoise, identify and normalize next generation amplicon sequencing reads using probabilistic models with parameters fit using the data at hand.

We have provided a brief overview of all the analyses that become possible once the data has been imported into the R environment. Multivariate projections using the phylogenetic tree as the relevant distance between OTUs/RSVs can be done using weighted unifracs or double principal coordinate analyses using the *phyloseq* package. Biplots provide the user with an interpretation key. These biplots have been extended to triplots in the case of multidomain data incorporating genetic, metabolic and taxa abundances. We illustrate the use of network based analyses, whether the community graph is provided from other sources or from a taxa co-occurrence computation using a Jaccard distance.

We have briefly covered a small example of using three supervised learning functions (random forests, partial least squares and) to predict a response variable,

The main challenges in tackling microbiome data come from the many different levels of heterogeneity both at the input and output levels. These are easily accommodated through R's capacity to combine data into S4 classes. We are able to include layers of information, trees, sample data description matrices, contingency table in the phyloseq data structures. The plotting facilities of *ggplot2* and *ggnetwork* allow for the layering of information in the output into plots that combine graphs, multivariate information and maps of the relationships between covariates and taxa abundances. The layering concept allows the user to provide reproducible publication level figures with multiple heterogeneous sources of information. Our main goal in providing these tools has been to enhance the statistical power of the analyses by enabling the user to combine frequencies, quality scores and covariate information into complete and testable projections.

Summary

This illustration of possible workflows for microbiome data combining trees, networks, normalized read counts and sample information showcases the capabilities and reproducibility of an R based system for analysing bacterial communities. We have implemented key components in C wrapped within the Bioconductor package *dada2* to enable the different steps to be undertaken on a laptop.

Once the sequences have been filtered and tagged they can be assembled into a phylogenetic tree directly in R using the maximum likelihood tree estimation available in *phangorn*. The sequences are then assembled into a phyloseq object containing all the sample covariates, the phylogenetic tree and the sample-taxa contingency table.

These data can then be visualized interactively with Shiny-phyloseq, plotted with one line wrappers in phyloseq and filtered or transformed very easily.

The last part of the paper shows more complex analyses that require direct plotting and advanced statistical analyses.

Multivariate ordination methods allow useful lower dimensional projections in the presence of phylogenetic information or multidomain data as shown in an example combining metabolites, OTU abundances,

Supervised learning methods provide lists of the most relevant taxa in discriminating between groups.

Bacterial communities can be represented as co-occurrence graphs using network based plotting procedures available in R. We have also provided examples where these graphs can be used to test community structure through non parametric permutation resampling. This provides implementations of the Friedman Rafsky²⁵ tests for microbiome data which have not been published previously.

Data availability

Intermediary data for the analyses are made available both on GitHub at https://github.com/spholmes/F1000_workflow and at the Stanford digital repository permanent url for this paper: <http://purl.stanford.edu/wh250nn9648>. All other data have been previously published and the links are included in the paper.

Software availability

Bioconductor packages at <https://www.bioconductor.org/>. CRAN packages at <https://cran.r-project.org/>.

Permanent repository for the data and program source of this paper: <https://purl.stanford.edu/wh250nn9648>

Latest source code as at the time of publication: https://github.com/spholmes/F1000_workflow

Archived source as at the time of publication: Zenodo: F1000_workflow: MicrobiomeWorkflowv0.9, doi: [10.5281/zenodo.54544](https://doi.org/10.5281/zenodo.54544)³⁶

Author contributions

BJC, KS, JAF, PJM and SPH developed the software tools, BJC, KS, JAF, PJM and SPH developed statistical methods and tested the workflow on the Mouse data sets. BJC, KS, JAF, PJM and SPH wrote the article.

Competing interests

No competing interests were disclosed.

Grant information

This work was partially supported by the NSF (DMS-1162538 to S.P.H.), the NIH (TR32 to KS and R01AI112401 to SPH), and a Stanford Interdisciplinary Graduate Fellowship supported JAF.

The funders had no role in study design, data collection and analysis, decision to publish, or preparation of the manuscript.

Acknowledgments

The authors would like to thank the members of the Relman Lab for their valuable insights on microbiology and sequencing. They are also grateful to Nandita Garud, Leo Lahti, Zachary Charlop-Powers for reviewing the paper and to Martina Fu and Shaheen Essabhoy for code testing and suggestions for the revised version.

References

- Wright ES: **Using DECIPHER v2.0 to analyze big biological sequence data in R**. *The R Journal*, Page in Press, 2016.
[Reference Source](#)
- Caporaso JG, Kuczynski J, Stombaugh J, *et al.*: **QIIME allows analysis of high-throughput community sequencing data**. *Nat Methods*. 2010; **7**(5): 335–336.
[PubMed Abstract](#) | [Publisher Full Text](#) | [Free Full Text](#)
- Schloss PD, Westcott SL, Ryabin T, *et al.*: **Introducing mothur: open-source, platform-independent, community-supported software for describing and comparing microbial communities**. *Appl Environ Microbiol*. 2009; **75**(23): 7537–7541.
[PubMed Abstract](#) | [Publisher Full Text](#) | [Free Full Text](#)
- Callahan BJ, McMurdie PJ, Rosen MJ, *et al.*: **DADA2: High-resolution sample inference from Illumina amplicon data**. *Nat Methods*. 2016; 1–4.
[PubMed Abstract](#) | [Publisher Full Text](#) | [Free Full Text](#)
- Huber W, Carey VJ, Gentleman R, *et al.*: **Orchestrating high-throughput genomic analysis with Bioconductor**. *Nat Methods*. 2015; **12**(2): 115–121.
[PubMed Abstract](#) | [Publisher Full Text](#) | [Free Full Text](#)
- Kozich JJ, Westcott SL, Baxter NT, *et al.*: **Development of a dual-index sequencing strategy and curation pipeline for analyzing amplicon sequence data on the MiSeq illumina sequencing platform**. *Appl Environ Microbiol*. 2013; **79**(17): 5112–5120.
[PubMed Abstract](#) | [Publisher Full Text](#) | [Free Full Text](#)
- Schloss PD, Schubert AM, Zackular JP, *et al.*: **Stabilization of the murine gut microbiome following weaning**. *Gut Microbes*. 2012; **3**(4): 383–393.
[PubMed Abstract](#) | [Publisher Full Text](#) | [Free Full Text](#)
- Edgar RC, Flyvbjerg H: **Error filtering, pair assembly and error correction for next-generation sequencing reads**. *Bioinformatics*. 2015; **31**(21): 3476–3482.
[PubMed Abstract](#) | [Publisher Full Text](#)
- Wang Q, Garrity GM, Tiedje JM, *et al.*: **Naive Bayesian classifier for rapid assignment of rRNA sequences into the new bacterial taxonomy**. *Appl Environ Microbiol*. 2007; **73**(16): 5261–7.
[PubMed Abstract](#) | [Publisher Full Text](#) | [Free Full Text](#)
- Cole JR, Wang Q, Cardenas E, *et al.*: **The Ribosomal Database Project: improved alignments and new tools for rRNA analysis**. *Nucleic Acids Res*. 2009; **37**(Database issue): D141–D145.
[PubMed Abstract](#) | [Publisher Full Text](#) | [Free Full Text](#)
- Wright ES: **DECIPHER: harnessing local sequence context to improve protein multiple sequence alignment**. *BMC Bioinformatics*. 2015; **16**: 322.
[PubMed Abstract](#) | [Publisher Full Text](#) | [Free Full Text](#)
- McMurdie PJ, Holmes S: **phyloseq: an R package for reproducible interactive analysis and graphics of microbiome census data**. *PLoS One*. 2013; **8**(4): e61217.
[PubMed Abstract](#) | [Publisher Full Text](#) | [Free Full Text](#)
- Oksanen J, Blanchet FG, Kindt R, *et al.*: **vegan: Community Ecology Package**. R package version 2.3-5. 2016.
[Reference Source](#)
- Chessel D, Dufour AB, Thioulouse J: **The ade4 package - i: One-table methods**. *R News*. 2004; **4**(1): 5–10.
[Reference Source](#)
- Paradis E, Claude J, Strimmer K: **APE: Analyses of Phylogenetics and Evolution in R language**. *Bioinformatics*. 2004; **20**(2): 289–290.
[PubMed Abstract](#) | [Publisher Full Text](#)
- Wickham H: **ggplot2: Elegant Graphics for Data Analysis**. Springer-

- Verlag, New York, 2009.
[Publisher Full Text](#)
17. McMurdie PJ, Holmes S: **Shiny-phyloseq: Web application for interactive microbiome analysis with provenance tracking.** *Bioinformatics*. 2015; **31**(2): 282–283.
[PubMed Abstract](#) | [Publisher Full Text](#) | [Free Full Text](#)
 18. Pavoine S, Dufour AB, Chessel D: **From dissimilarities among species to dissimilarities among communities: a double principal coordinate analysis.** *J Theor Biol*. 2004; **228**(4): 523–537.
[PubMed Abstract](#) | [Publisher Full Text](#)
 19. Purdom E: **Analysis of a data matrix and a graph: Metagenomic data and the phylogenetic tree.** *Ann Appl Stat*. 2011; **5**(4): 2326–2358.
[Publisher Full Text](#)
 20. Fukuyama J, McMurdie PJ, Dethlefsen L, *et al.*: **Comparisons of distance methods for combining covariates and abundances in microbiome studies.** *Pac Symp Biocomput*. World Scientific, 2012; 213–24.
[PubMed Abstract](#) | [Publisher Full Text](#) | [Free Full Text](#)
 21. Holmes S, Alekseyenko A, Timme A, *et al.*: **Visualization and statistical comparisons of microbial communities using R packages on Phylochip data.** *Pac Symp Biocomput*. 2011; 142–53.
[PubMed Abstract](#) | [Publisher Full Text](#) | [Free Full Text](#)
 22. ter Braak C: **Correspondence analysis of incidence and abundance data: Properties in terms of a unimodal response model.** *Biometrics*. 1985; **41**(4): 859–873.
[Publisher Full Text](#)
 23. Greenacre M: **Correspondence analysis in practice.** CRC press, 2007.
[Reference Source](#)
 24. Wold S, Ruhe A, Wold H, *et al.*: **The collinearity problem in linear regression. The partial least squares (pls) approach to generalized inverses.** *SIAM J Sci Stat Comput*. 1984; **5**(3): 735–743.
[Publisher Full Text](#)
 25. Friedman JH, Rafsky LC: **Multivariate generalizations of the wald-wolfowitz and smirnov two-sample tests.** *Ann Statist*. 1979; **7**(4): 697–717.
[Publisher Full Text](#)
 26. Schilling MF: **Multivariate two-sample tests based on nearest neighbors.** *J Am Stat Assoc*. 1986; **81**(395): 799–806.
[Publisher Full Text](#)
 27. Penrose M: **Random geometric graphs.** Oxford University Press, Oxford, 2003; 5.
[Publisher Full Text](#)
 28. Benjamini Y, Hochberg Y: **Controlling the false discovery rate: a practical and powerful approach to multiple testing.** *J Roy Stat Soc B*. 1995; **57**(1): 289–300.
[Reference Source](#)
 29. Benjamini Y, Yekutieli D: **Hierarchical fdr testing of trees of hypotheses.** Technical report, Department of Statistics and Operations Research. Tel Aviv University, 2003.
 30. Benjamini Y, Bogomolov M: **Selective inference on multiple families of hypotheses.** *J R Stat Soc Series B Stat Methodol*. 2014; **76**(1): 297–318.
[Publisher Full Text](#)
 31. Love MI, Huber W, Anders S: **Moderated estimation of fold change and dispersion for RNA-seq data with DESeq2.** *Genome Biol*. 2014; **15**(12): 550.
[PubMed Abstract](#) | [Publisher Full Text](#) | [Free Full Text](#)
 32. McMurdie PJ, Holmes S: **Waste not, want not: why rarefying microbiome data is inadmissible.** *PLoS Comput Biol*. 2014; **10**(4): e1003531.
[PubMed Abstract](#) | [Publisher Full Text](#) | [Free Full Text](#)
 33. Sankaran K, Holmes S: **structSSI: Simultaneous and Selective Inference for Grouped or Hierarchically Structured Data.** *J Stat Softw*. 2014; **59**(13): 1–21.
[PubMed Abstract](#) | [Publisher Full Text](#) | [Free Full Text](#)
 34. Witten D, Tibshirani R, Gross S, *et al.*: **Pma: Penalized multivariate analysis.** R package version. 2009; **1**(5).
 35. Kashyap PC, Marcobal A, Ursell LK, *et al.*: **Genetically dictated change in host mucus carbohydrate landscape exerts a diet-dependent effect on the gut microbiota.** *Proc Natl Acad Sci U S A*. 2013; **110**(42): 17059–17064.
[PubMed Abstract](#) | [Publisher Full Text](#) | [Free Full Text](#)
 36. Callahan BJ, Sankaran K, Fukuyama JA, *et al.*: **F1000_workflow: MicrobiomeWorkflowv0.9.** *Zenodo*. 2016.
[Data Source](#)

Open Peer Review

Current Peer Review Status:   

Version 2

Reviewer Report 07 November 2016

<https://doi.org/10.5256/f1000research.10545.r17380>

© 2016 Lahti L. This is an open access peer review report distributed under the terms of the [Creative Commons Attribution License](#), which permits unrestricted use, distribution, and reproduction in any medium, provided the original work is properly cited.



Leo Lahti 

Department of Mathematics and Statistics, University of Turku, Turku, Finland

The title and abstract appropriately summarize the contents, and the text is fluent to read. The manuscript aims to cover a vast area, and does good job in summarizing the relevant key aspects in a single workflow.

The study design, methods and analysis and their suitability are properly described with appropriate references. The work describes a recommendation for a workflow based on the author's comprehensive experience in this field. It does not provide thorough comparison or benchmarking of the methods but relevant research is cited and key comparisons are already available in the literature. The contribution in this work is to combine the individual elements into a coherent workflow that describes very typical steps and recommended choices in standard taxonomic analysis.

* Major comments:

The main shortcoming is that the workflow is not provided in a readily reproducible format. I cloned the github repository, and could run the analysis rnw files (PartI, PartII, PartIII) individually, as well as the main.rnw. These result in .text file but using pdflatex or latex could not be readily applied to convert these into the final PDF format. The github site does not mention how the rnw files should actually be converted into PDF. This is not evident as there are many ways to do this and the success will depend on the overall setup. The authors could include for instance a simple shell script or README in the github main directory, showing what steps are taken to get from the original R/Rnw files to the final PDF reports. This would greatly increase the utility and reproducibility of this work.

* Minor comment:

- Something is missing from Conclusions. There is paragraph that in its entirety reads as follows: "We have briefly covered a small example of using three supervised learning functions (random

forests, partial least squares and) to predict a response variable," - it misses text in parentheses and ends with a comma.

- Could you cite or discuss in more detail based on your experience whether Friedman Rafsky method outperforms alternative or at least closely related methods in the pairwise comparison task? Not required but would be interesting to know.

- The phyloseq package might serve its purpose better if split in smaller and more compact packages. The class structure is really useful and valuable, and would deserve its own package. This would better serve the overall microbiome data analytics community which can build on this and expand phyloseq capabilities in separate packages, in the same way as certain microarray data structures became a norm with the RMA and limma packages, with subsequent explosion in analysis methodologies. I am here just repeating my comment from the first review. Not required for this manuscript, however.

Competing Interests: I am currently developing the microbiome R package, which utilizes some of the functionality in the phyloseq package which has a central role in this review. I have done this development work independently of the authors, following standard open source development model. It is just one of the many packages I am utilizing, and I do not see a clear competing interest but like to mention this.

I confirm that I have read this submission and believe that I have an appropriate level of expertise to confirm that it is of an acceptable scientific standard.

Version 1

Reviewer Report 08 August 2016

<https://doi.org/10.5256/f1000research.9666.r14571>

© 2016 Garud N. This is an open access peer review report distributed under the terms of the [Creative Commons Attribution License](#), which permits unrestricted use, distribution, and reproduction in any medium, provided the original work is properly cited.



Nandita R. Garud

Gladstone Institutes, University of California, San Francisco, San Francisco, CA, USA

This article is a valuable resource for the metagenomics field. The thorough examples of several statistical analyses of metagenomic data will help both the novice and expert in analyzing their own data. Additionally, this paper sets a standard in the field for documenting analyses.

Both DADA2 and PhyloSeq have much to offer. DADA2 identifies OTUs, which are termed in this paper 'Ribosomal Sequence Variants,' reflecting the extra granularity with which DADA2 is capable of resolving OTUs. The RSVs identified by DADA2 offer the ability to conduct higher resolution analyses on 16S data. PhyloSeq is comprised of numerous capabilities to analyze metagenomic

data, making it quite easy for a user to load and analyze their data.

Below I make a few suggestions for clarification purposes. I enjoyed reading this article and have already benefited greatly from using DADA2 and PhyloSeq in my own work.

Minor critiques and suggestions:

- A very attractive feature of DADA2 is its ability to resolve RSVs. I wonder if the authors could expand more on the findings they have made with the higher resolution OTUs found by DADA2. This would highlight why DADA2 is such a powerful tool.
- I wonder if the examples that the authors provide could be more biologically motivated. For example, could the authors explain the mouse data set in greater depth in the introduction? What did Kozich *et al.* 2013 and Schloss *et al.* 2012 find in these data sets? Were DADA2 and PhyloSeq used to analyze the data in these two papers? If not, are the findings different? I enjoyed reading about the different metagenomic properties of mice of different ages. More description along these lines in the introduction would make it motivating to understand why the various preprocessing steps are done and an overview of what is to come.
- Page 4 – it could be helpful to illustrate some of the properties of the software with numbers and data. For example, DADA2 has the ability to infer OTUs from pooled or unpooled data. Could the authors illustrate the number of RSVs found in the two scenarios?
- Figure 2 -- Could the authors explain on Page 4 what sequencing error rates are being inferred (i.e. transition and transversion errors)? Which parameters are inferred to come up with the solid black line? An explicit reference to Figure 2 in the text could help. Additionally, headers indicating Forward and Reverse reads in Figure 2 could help to distinguish the plots.
- Page 6 – Is the multiple sequence alignment feature capable of multiple methods? If so, do you advocate for using ClustalW for metagenomic data? Why?
- Page 6 -- Could the authors define what a GTR+G+I model is?
- I wonder if the authors could give some more guidance on how to construct the PhyloSeq object from scratch without relying import functions. For example, I tried making a PhyloSeq object using Metaphlan2 output. Unfortunately I could not figure out how to merge Metaphlan2 biom files for each sample, and so I had to fiddle with Phyloseq for sometime to manually create the OTU, sample, and taxa tables for multiple samples.

Competing Interests: No competing interests were disclosed.

I confirm that I have read this submission and believe that I have an appropriate level of expertise to confirm that it is of an acceptable scientific standard.

Author Response 04 Nov 2016

Benjamin Callahan, Stanford University, USA

Thanks for your comments and suggestions. We made several improvements to the revised manuscript in response:

We added an explicit reference to Figure 2 in the text. The error rates being estimated in each plot are indicated in the text just above each plot. A2C (A to C) is shorthand for an A being converted to a C by errors in the amplicon sequencing process.

We changed the multiple-sequence alignment method in the workflow to that implemented by the DECIPHER package, largely because of its improved computational performance.

We added a brief text description of GTR+G+I (Generalized time-reversible with Gamma rate variation).

We did not expand our evaluation of RSVs vs. OTUs or pooled vs. unpooled inference. Performing such evaluations well is a significant undertaking and would take significant space to explain, and our primary purpose here is to demonstrate the many features of an R/Bioconductor amplicon analysis workflow.

For evaluation of DADA2, our manuscript introducing the method examines differences between the output of DADA2 and OTU methods and we are writing another manuscript that looks at performance on datasets with many samples. On the issue of pooled vs. unpooled results, the short answer is that we find both approaches work well. If just counting the number of output OTU sequences, pooled inference generally finds more because of its higher sensitivity to sequences that are found in many samples but are rare in each. Of note, we generally find these pooled-only sequences to be very highly enriched for contaminants (eg. kit contaminants), which are expected to be distributed in just this way.

We also did not expand much on the biological findings from this dataset in the initial paper (Stabilization of the murine gut microbiome following weaning, Schloss et al. 2012), as they were quite limited, essentially boiling down to the observation that gut sample early in life differed by more on average than samples from later in life. However, the dataset has been used in a number of studies as an example dataset for testing new methods (as in Kozich et al. 2013) and that is the way in which we are using it here.

Competing Interests: No competing interests were disclosed.

Reviewer Report 18 July 2016

<https://doi.org/10.5256/f1000research.9666.r14570>

© 2016 Charlop-Powers Z. This is an open access peer review report distributed under the terms of the [Creative Commons Attribution License](#), which permits unrestricted use, distribution, and reproduction in any medium, provided the original work is properly cited.



Zachary Charlop-Powers 

Laboratory of Genetically Encoded Small Molecules, The Rockefeller University, New York, NY, USA

There is a growing push in the computational sciences for adopting software practices that promote replicability and provide methodological transparency. In the field of microbiome research these practices should minimize the standard culprits of error-creep such as file proliferation, and incompatible formats; they should provide sound default choices for the core computational steps of sequence clustering and taxonomic assignment; and they should facilitate reproducible statistical analyses of the resulting data. By providing a step-by-step analysis of a microbiome dataset that can be completed entirely from within the R statistical computing environment, this workflow does an admirable job of bringing these best-practices to the world of microbiome science.

The article takes a reader through the steps of processing raw sequence data and loading the data into R. It then demonstrates how to use basic exploratory data analysis to get a sense of the data and finally introduces the use of various statistical packages to search-for and validate patterns. The majority of the article focuses on the application of statistical concepts to microbiome data and this is where scientists would like to be spending their time. However, this allocation of ink-space is only possible because the recent release of the DADA2 package allows the authors (and subsequent users) to condense all the read-processing portion of the tutorial into a few short steps. DADA2 provides a new and arguably superior method for clustering raw amplicon reads and, by processing the reads and assigning taxonomy, it fills in the computational gap required to work completely within R. The benefits of this workflow are fairly self-evident in the amount of space in their workflow devoted to data processing versus exploration, however, there are other benefits as well, of which I will name two. First, by using packages hosted on CRAN or Bioconductor, the authors can leverage the Bioconductor build system and ensure a fully working environment, a non-trivial prerequisite in a field with myriad tools. Second, by providing an integrated set of tools there are few, if any, intermediate files required to analyze a dataset. In addition to reducing the cognitive burden of a newcomer, this generally reduces the footprint for errors.

This article is an excellent introduction on how to process and analyze a 16S amplicon dataset. Because of the relative ease of working entirely within a single environment, and for the sound design principles used by the core R packages in this analysis, I predict this workflow will become a useful resource, if not a direct template, for many microbiome scientists learning to process their data.

Competing Interests: No competing interests were disclosed.

I confirm that I have read this submission and believe that I have an appropriate level of expertise to confirm that it is of an acceptable scientific standard.

Reviewer Report 08 July 2016

<https://doi.org/10.5256/f1000research.9666.r14572>

© 2016 Lahti L. This is an open access peer review report distributed under the terms of the [Creative Commons Attribution License](#), which permits unrestricted use, distribution, and reproduction in any medium, provided the original work is properly cited.



Leo Lahti 

Department of Mathematics and Statistics, University of Turku, Turku, Finland

This work reports a standard R/Bioconductor open source workflow for the analysis of microbial community profiling data based on (Illumina MiSeq) 16S rRNA amplicon sequencing. The main contribution of the

paper is to present a compact overview of a typical microbiome analysis workflow in R, and to integrate accumulated knowledge by the authors regarding best practices in microbiome bioinformatics based on the R statistical programming environment.

The workflow covers key steps from raw sequencing data preprocessing to standard statistical testing, data integration, and visualization. The methodologies are rigorous, and represent a straightforward combination of previously published R tools that are among the state-of-the-art in the field. Reliance on Bioconductor packages provides further guarantees for high quality of the software components. All data and code underlying the paper are openly available, and I was also able to replicate the complete workflow after some initial setups. I examined about half of the examples in more detail, and could reproduce manuscript figures in all cases that I tested.

No new methods are introduced, and the main contribution of the work is to showcase good statistical practice based on existing software components, some of which have been previously published by the authors of this manuscript. Appropriate references are provided throughout the text. Such overview papers are useful, however, as they can provide benchmarks and recommendations on complete workflows, where the different analysis steps are not independent in any real study and deserve analysis in their own right.

The analysis steps are explained in clear language and with sufficient detail. The work is technically sound. The main drawback is that the manuscript is somewhat scattered as it aims to cover a large and versatile set of tools in a single paper. The quality of the analysis is high, and the overview is useful, and the paper could be accepted after taking into account my comments below.

Major comments

- The work is somewhat scattered due to the wide coverage. The paper could benefit from having less figures and increasing focus on key aspects. For instance the number of biplots and network figures could be reduced. The data integration part (CCA etc.) is useful but very brief and probably difficult to comprehend by readers who are new to those approaches. I would recommend either cutting or expanding this part and also otherwise checking if the manuscript can be made more compact by removing some examples (perhaps by moving some examples into supplementary material or online documentation?).

- The examples with DADA2 and the hierarchical testing procedure are particularly useful; these recently published methods would deserve to become more widely used. Sufficient details have been given for this work.
- Instructions on how to exactly use the source files provided in Github are missing. The rnw files are missing latex headers so I could not readily generate final readable reports from the rnw files. The code itself was clear, and after some setups I could replicate all analyses after changing some path definitions and running the code interactively on R command line. But this relied on my earlier good knowledge on R and automated document generationsystems. Users who are less experienced with these tools would benefit from improved instructions on how to run the workflow. The README.md file in Github should give more detailed instructions (or link to instructions) on how to exactly reproduce the complete example workflow and generate the final reports.
- In the "Infer sequence variants" section it is mentioned that "Sequence inference removed nearly all substitution and indel errors from the data". How this was quantified to reach this conclusion?

Minor comments

- The phyloseq R package has been published earlier and represents an extremely useful class structure for microbiome profiling data that has high potential of becoming a popular standard in R. These tools, and their (online) documentation form essential background material for this manuscript. Better separation of the data structures and tools in this manuscript, the R packages (in particular phyloseq) and their documentation. This would make it easier for the wider R community to build on this work and contribute further tools that take advantage of the phyloseq data structure. This is not required for this manuscript but a suggestion for improvement.
- I had to investigate the code a while to see that the file <http://www.mothur.org/MiSeqDevelopmentData/StabilityNoMetaG.tar> has to be stored in a data/MiSeq_SOP/ directory after download and extraction. Not a big deal but it would be even more handy to have a download script (R or shell) available in the F1000_workflow/data/ directory, and the instructions would then give clear advice on how to automate the complete analysis workflow. To streamline the workflow example, consider providing some example data sets as R data packages.
- At the github repo README.md the command `knit("PartIIphyloseq.Rnw")` should be `knit("PartIIphyloseq.rnw")`
- In PartIIIanalysis.rnw the script gets stuck at:

```
options(digits = 3, width = 80,prompt = " ", continue = " ")
```

(I was waiting 24 hours; then restarted and tried again with same result).
Therefore I skipped this row in my tests. Please fix.
- Is it intentional that figures 8, 10, 11, 12, 13, 14 and some other figures have an unbalanced width/height ratio? The figures might seem more clear if the width/height ratio was more

balanced.

- The plot_abundance function could be readily provided in the phyloseq package?
- Quality of Figure 1 is relatively poor and could be improved.
- Figure 31: in title: fix "muple" into "multiple"

Competing Interests: No competing interests were disclosed.

I confirm that I have read this submission and believe that I have an appropriate level of expertise to confirm that it is of an acceptable scientific standard.

Comments on this article

Version 2

Reader Comment 03 May 2017

Gary Vanzin, Colorado School of Mines, USA

Great article! Link in reference #1 is not working.

Competing Interests: No competing interests were disclosed.

Reader Comment 02 Nov 2016

German Leparç,

Just a small typo I found in the section "Infer sequence variants":

earlier you initialize the values:

```
filtFs <- file.path(filt_path, basename(fnFs))
```

```
filtRs <- file.path(filt_path, basename(fnRs))
```

but then it changes from filtFs and filtRs to filtsFs and filtsRs:

```
derepFs <- derepFastq(filtsFs)
```

```
derepRs <- derepFastq(filtsRs)
```

one can correct these two lines to:

```
derepFs <- derepFastq(filtFs)
```

```
derepRs <- derepFastq(filtRs)
```

thank you for the helpful workflow!

Competing Interests: No competing interests were disclosed.

Version 1

Author Response 26 Jul 2016

Susan Holmes, Stanford University, USA

Thanks for the comment, this is very helpful.

Indeed we realized there are a few lines missing in the github repository and the online code, we are currently preparing a revision that addresses this and the referee's reports.

We hope to have a new version up shortly, the github repository should reflect the changes in code even before the new article does.

In the meantime if you are still having problems it is also possible to post issues both on the phyloseq and dada2 repositories:

<https://github.com/joey711/phyloseq>

<https://github.com/benjaneb/dada2>

Competing Interests: None.

Reader Comment 26 Jul 2016

Bob Settlage, Virginia Polytechnic Institute and State University, USA

Hi,

Nice article. You might go through the walk through fresh as some of the code is missing. For example, the object you need to make Figure 11 was never made, easy fix, but incomplete walkthrough. As another example, the function setup_example is not defined. Looks like it is just a load library, but again, incomplete. One thing that might help is if you converted this article to .Rmd such that you also published the .Rmd file to the supplementary material or something similar.

Competing Interests: No competing interests were disclosed.

The benefits of publishing with F1000Research:

- Your article is published within days, with no editorial bias
- You can publish traditional articles, null/negative results, case reports, data notes and more
- The peer review process is transparent and collaborative
- Your article is indexed in PubMed after passing peer review
- Dedicated customer support at every stage

For pre-submission enquiries, contact research@f1000.com

F1000Research