



THE UNIVERSITY *of* EDINBURGH

Edinburgh Research Explorer

Reprogramming triggers endogenous L1 and Alu retrotransposition in human induced pluripotent stem cells

Citation for published version:

Klawitter, S, Fuchs, NV, Upton, KR, Muñoz-Lopez, M, Shukla, R, Wang, J, Garcia-Cañadas, M, Lopez-Ruiz, C, Gerhardt, DJ, Sebe, A, Grabundzija, I, Merkert, S, Gerdes, P, Pulgarin, JA, Bock, A, Held, U, Witthuhn, A, Haase, A, Sarkadi, B, Löwer, J, Wolvetang, EJ, Martin, U, Ivics, Z, Izsvák, Z, Garcia-Perez, JL, Faulkner, GJ & Schumann, GG 2016, 'Reprogramming triggers endogenous L1 and Alu retrotransposition in human induced pluripotent stem cells' Nature Communications, vol. 7, pp. 10286. DOI: 10.1038/ncomms10286

Digital Object Identifier (DOI):

[10.1038/ncomms10286](https://doi.org/10.1038/ncomms10286)

Link:

[Link to publication record in Edinburgh Research Explorer](#)

Document Version:

Publisher's PDF, also known as Version of record

Published In:

Nature Communications

Publisher Rights Statement:

This work is licensed under a Creative Commons Attribution 4.0 International License. The images or other third party material in this article are included in the article's Creative Commons license, unless indicated otherwise in the credit line; if the material is not included under the Creative Commons license, users will need to obtain permission from the license holder to reproduce the material. To view a copy of this license, visit <http://creativecommons.org/licenses/by/4.0/>

General rights

Copyright for the publications made accessible via the Edinburgh Research Explorer is retained by the author(s) and / or other copyright owners and it is a condition of accessing these publications that users recognise and abide by the legal requirements associated with these rights.

Take down policy

The University of Edinburgh has made every reasonable effort to ensure that Edinburgh Research Explorer content complies with UK legislation. If you believe that the public display of this file breaches copyright please contact openaccess@ed.ac.uk providing details, and we will remove access to the work immediately and investigate your claim.



ARTICLE

Received 29 Jun 2015 | Accepted 26 Nov 2015 | Published 8 Jan 2016

DOI: 10.1038/ncomms10286

OPEN

Reprogramming triggers endogenous L1 and *Alu* retrotransposition in human induced pluripotent stem cells

Sabine Klawitter^{1,*†}, Nina V. Fuchs^{1,2,*}, Kyle R. Upton^{3,*}, Martin Muñoz-Lopez^{4,*}, Ruchi Shukla³, Jichang Wang², Marta Garcia-Cañadas⁴, Cesar Lopez-Ruiz⁴, Daniel J. Gerhardt³, Attila Sebe¹, Ivana Grabundzija², Sylvia Merkert⁵, Patricia Gerdes³, J. Andres Pulgarin⁴, Anja Bock¹, Ulrike Held¹, Anett Witthuhn⁵, Alexandra Haase⁵, Balázs Sarkadi⁶, Johannes Löwer¹, Ernst J. Wolvetang⁷, Ulrich Martin⁵, Zoltán Ivics¹, Zsuzsanna Izsvák², Jose L. Garcia-Perez⁴, Geoffrey J. Faulkner^{3,8} & Gerald G. Schumann¹

Human induced pluripotent stem cells (hiPSCs) are capable of unlimited proliferation and can differentiate *in vitro* to generate derivatives of the three primary germ layers. Genetic and epigenetic abnormalities have been reported by Wissing and colleagues to occur during hiPSC derivation, including mobilization of engineered LINE-1 (L1) retrotransposons. However, incidence and functional impact of endogenous retrotransposition in hiPSCs are yet to be established. Here we apply retrotransposon capture sequencing to eight hiPSC lines and three human embryonic stem cell (hESC) lines, revealing endogenous L1, *Alu* and SINE-VNTR-*Alu* (SVA) mobilization during reprogramming and pluripotent stem cell cultivation. Surprisingly, 4/7 *de novo* L1 insertions are full length and 6/11 retrotransposition events occurred in protein-coding genes expressed in pluripotent stem cells. We further demonstrate that an intronic L1 insertion in the *CADPS2* gene is acquired during hiPSC cultivation and disrupts *CADPS2* expression. These experiments elucidate endogenous retrotransposition, and its potential consequences, in hiPSCs and hESCs.

¹Division of Medical Biotechnology, Paul-Ehrlich-Institute, D-63225 Langen, Germany. ²Max-Delbrück-Center for Molecular Medicine, D-13125 Berlin, Germany. ³Mater Research Institute, University of Queensland, TRI Building, Woolloongabba, Brisbane, Queensland 4102, Australia. ⁴Department of Human DNA Variability, Pfizer/University of Granada and Andalusian Regional Government Center for Genomics and Oncology (GENYO), PTS Granada, 18016 Granada, Spain. ⁵Leibniz Research Laboratories for Biotechnology and Artificial Organs (LEBAO), Department of Cardiac, Thoracic, Transplantation, and Vascular Surgery; REBIRTH, Cluster of Excellence, Hannover Medical School, D-30625 Hannover, Germany. ⁶Department of Biophysics and Radiation Biology, Semmelweis University, H-1094 Budapest, Hungary. ⁷Australian Institute for Bioengineering and Nanotechnology, The University of Queensland, St Lucia, Queensland 4072, Australia. ⁸Queensland Brain Institute, University of Queensland, Brisbane, Queensland 4072, Australia. * These authors contributed equally to this work. † Present address: Division of Inborn Metabolic Diseases, University Children's Hospital, D-69120 Heidelberg, Germany. Correspondence and requests for materials should be addressed to J.L.G.-P. (email: jlgp@genyo.es) or to G.J.F. (email: faulknergj@gmail.com) or to G.G.S. (email: Gerald.Schumann@pei.de).

Human induced pluripotent stem cells (hiPSCs) hold substantial promise for biomedical applications and as *in vitro* models of disease and development. Unlike human embryonic stem cells (hESCs), hiPSCs are a potential source of autologous cells compatible with the immune system of transplant recipients¹. hiPSCs also circumvent ethical issues associated with the use of human embryos¹. However, genetic and epigenetic aberrations that occur during reprogramming and expansion *in vitro*^{2–6} may hinder the use of hiPSCs in regenerative medicine due to, for instance, an elevated risk of tumorigenesis upon implantation⁷. Thus, identifying the full spectrum of aberrant mutational processes occurring in the hiPSC genome, and their functional consequences, is of paramount significance.

LINE-1 (L1) retrotransposons (Fig. 1a) are mobile genetic elements remaining active in nearly all mammals⁸. In humans, 500,000 L1 copies contribute 17% of the genome, though only 80–100 L1s per individual remain transposition competent^{9–11}. L1 mobilization is thought to primarily occur in germ cells and during early embryonic development and, together with L1-mediated *Alu* and SVA retrotransposition, has caused widespread genome structural variation in human populations^{10,12–14}. *De novo* retrotransposition events can profoundly alter gene structure, expression and function, and drive pathogenesis^{15–17}. Several intracellular defence mechanisms have consequently evolved to limit L1 mobility, including histone modifications and DNA methylation^{8,18}.

Nonetheless, epigenome-wide remodelling¹⁹ coincident with reprogramming appears to enable L1 promoter hypomethylation and transcriptional activation in hiPSCs^{20,21}. hiPSCs and hESCs also support low-level retrotransposition of an engineered L1 reporter^{13,20,22}. These observations indicate that the molecular machinery and substrates required for L1 retrotransposition exist in pluripotent stem cells. However, genomic analyses of mouse- and human-derived iPSC populations have to date not identified endogenous L1 mobilization events^{23,24}. It is therefore unclear whether endogenous L1-mediated mobilization occurs during reprogramming or hiPSC cultivation and, as a result, the potential significance of L1 insertional mutagenesis in hiPSCs remains unresolved. Here, we describe the dynamics of L1 expression associated with reprogramming, elucidate L1, *Alu* and SVA mobilization in hiPSCs, and use an exemplar *de novo* L1 insertion in *CADPS2* to demonstrate the potential impact of endogenous retrotransposition in pluripotent stem cells.

Results

Dynamic L1 activity in hiPSCs. To elucidate endogenous L1 mobilization associated with hiPSC reprogramming, we first assembled a panel of eight hiPSC lines and matched parental cells. Briefly, hiPSCs were derived from human fibroblasts and cord blood-derived endothelial cells (hCBECs) using several combinations of reprogramming factors, as well as integrating and non-integrating delivery systems (Table 1). Extensive characterization of these lines is described elsewhere^{25–27} or, as for hFF-iPS4 and hiPS-SB4, was performed here to confirm differentiation potential and expression of pluripotency markers (Supplementary Figs 1 and 2). Noting that genomic aberrations observed in hiPSCs may occur in small parental cell subpopulations and only rise to prominence after hiPSC cultivation²⁸, we ensured that each hiPSC line used in this study was reprogrammed from a single somatic cell. This lessened the probability that heterogeneous genomic variants in parental cells could be erroneously called as *de novo* in descendant hiPSCs. As additional controls, we used three hESC lines as benchmarks of L1 expression and pluripotency (Table 1).

Transcription and translation of functional L1 elements are prerequisites for L1-mediated retrotransposition. To confirm that reports of pronounced L1 expression in hiPSCs by Wissing *et al.*²⁰ could be extended to the hiPSC lines used in our study, we measured L1 mRNA abundance, L1 promoter methylation status and L1 ORF1p protein (ORF1p) expression in fibroblast (HFF-1)- and hCBEC-derived hiPSCs (hFF-iPS4, hiPS-SB4, hiPS-SB5, hCBiPS1 and hCBiPS2) and their parental cells (Table 1; Fig. 1a–d). TaqMan qRT-PCR (quantitative PCR with reverse transcription) targeting the L1 5'UTR (Fig. 1a; Supplementary Table 1) revealed significantly elevated L1 mRNA levels in each hiPSC line relative to their parental cells ($P < 0.05$ – $P < 0.0001$, analysis of variance (ANOVA)), that peaked in earlier passages of cell lines hiPS-SB4 and hiPS-SB5 (Fig. 1b)^{20,21}. Northern blot analyses with an L1 5'UTR-specific probe (Fig. 1a) confirmed elevated expression of full-length L1 transcripts in hiPSCs (Fig. 1c). Notably, extended hiPSC culture led to reduced L1 mRNA abundance (Fig. 1b, left panel; hiPS-SB4, hiPS-SB5; $P < 0.05$ – $P < 0.001$, ANOVA) and resembled levels observed in hESCs (HES-3, Fig. 1b). Bisulfite DNA sequencing of the CpG island present in the canonical L1 promoter revealed strong hypomethylation in all tested hiPSC lines compared to parental cells ($P_{1,2} < 2 \times 10^6$, Fig. 1d; $P_1 = 2.6 \times 10^{-12}$, $P_2 = 1.8 \times 10^{-5}$, Supplementary Fig. 3; χ^2 test). Consistently, L1 ORF1p was abundant in hiPSCs, based on immunoblot (Fig. 1e) and immunofluorescence assays (Fig. 2; Supplementary Fig. 4). In agreement with previous reports of cytoplasmic L1 ORF1p expression in human tumours and cancer cell lines^{29–31}, in hiPSCs, we found L1 ORF1p predominantly expressed in cytoplasmic foci (Fig. 2b). However, unlike recent studies focused on other cell types^{29,32}, we did not resolve whether L1 ORF1p was directed to stress granules in hiPSCs. Finally, quantitative immunoblot analyses (Supplementary Methods) revealed a tenfold increase in L1 ORF1p expression in hiPSCs when compared with parental cells (Supplementary Fig. 5).

Taken together, our results revealed a spike in L1 expression during or immediately after reprogramming, confirming previous findings^{20,21}, followed by attenuation in later hiPSC passages (Fig. 1b,c). To extend these results, we measured L1 mRNA levels upon differentiation of late passage hiPSCs (hiPS-SB4 (p98) and hFF-iPS4 (p50)) into embryoid bodies. We observed 49% and 58% reductions in L1 mRNA levels after 1 and 10 days of embryoid body differentiation, respectively (Fig. 1b, middle panel). A parallel assay conducted with early passage hiPSCs indicated a gradual and significant decrease of L1 mRNA abundance by up to 65% after 8 days of embryoid body differentiation and a concomitant increase in differentiation markers (Fig. 1b, right panel; Supplementary Fig. 6). Hence, elevated L1 expression in hiPSCs was triggered by reprogramming and attenuated by short-term cultivation, while, in turn, subsequent differentiation gradually reduced L1 expression.

Endogenous retrotransposition in pluripotent stem cells. To unambiguously determine whether activation of the L1 mobilization machinery produced L1-mediated retrotransposition, we used retrotransposon capture sequencing (RC-seq) to map the genomic integration sites of *de novo* retrotransposon insertions. Briefly, RC-seq involved liquid phase sequence capture to enrich DNA for the 5' and 3' junctions of recent L1, *Alu* and SVA insertions and the surrounding genome³³. Putatively immobile long terminal repeat (LTR) retrotransposons were also probed as negative controls. Multiplexed, paired-end 150mer Illumina sequencing of RC-seq libraries, followed by contig assembly,

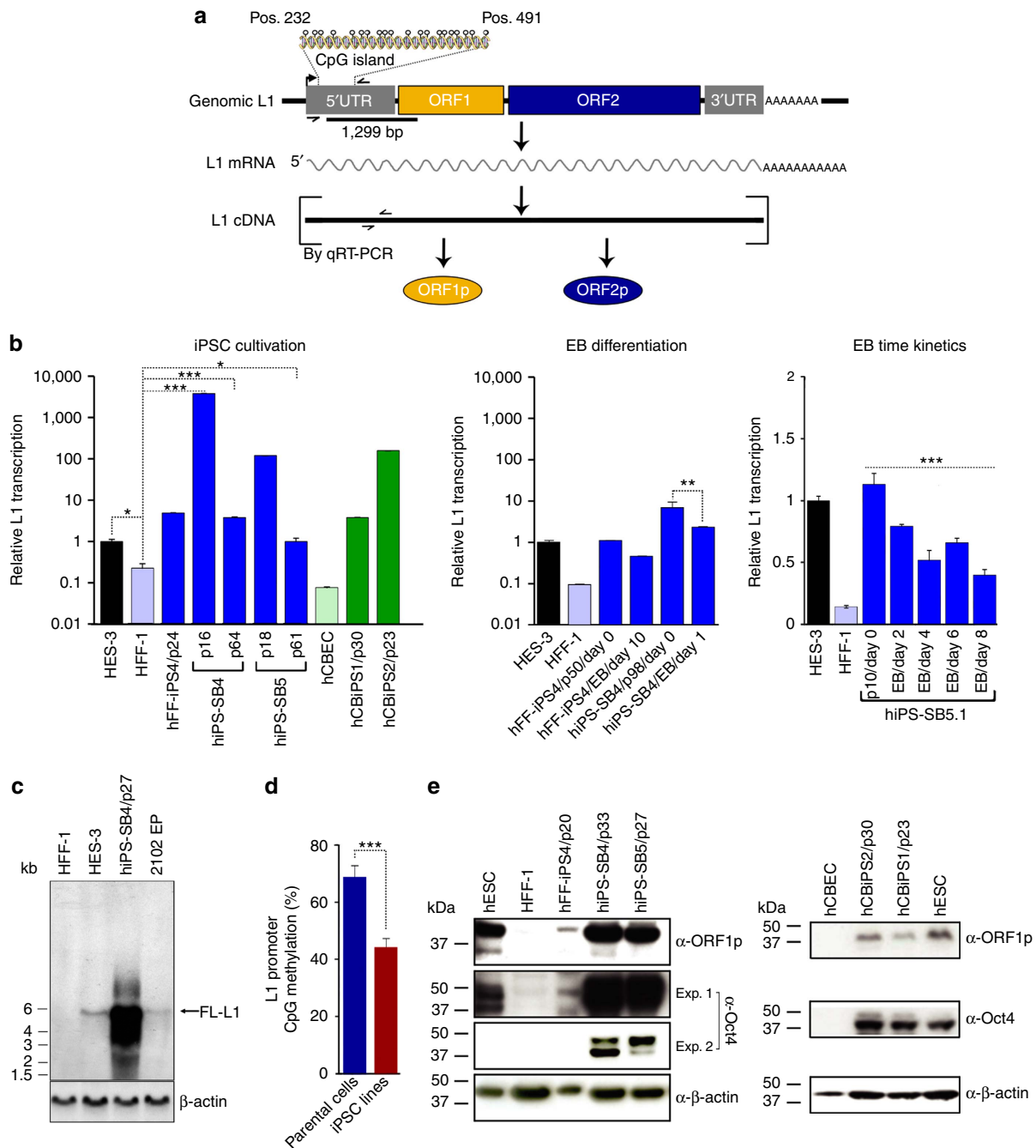
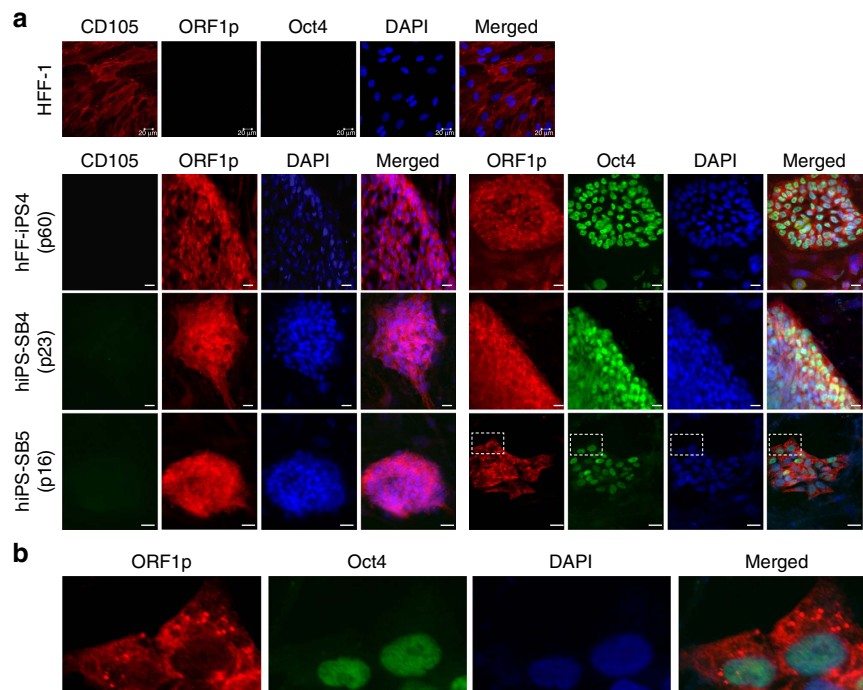


Figure 1 | Reprogramming-induced expression of the L1 retrotransposition machinery is abrogated during embryoid body formation. (a) Schematic of organization and expression of a functional human L1 element. Binding sites of TaqMan primer/probe combinations (small convergent arrows) on L1 cDNA used for qRT-PCR analyses and of the 1,299-bp [α - 32 P]dCTP-labelled PCR product in the 5'UTR region (black bar) used for northern analysis are shown. Methylation status of the CpG island (position number 232–491 of the L1.3 reference sequence) was analysed. Open circles, CpG residues. (b) Relative full-length L1 (FL-L1) mRNA transcript levels were assessed by qRT-PCR from early passage (until p24) HFF-1-derived (hFF-iPS4, hiPS-SB4 and hiPS-SB5) and hCBEC-derived (hCBiPS1 and hCBiPS2) hiPSC lines (left panel), and after differentiation of hFF-iPS4 (p50) and hiPS-SB4 (p98) lines into embryoid bodies (EBs) (middle panel) ($^{*}P < 0.05$, $^{**}P < 0.01$, $^{***}P < 0.001$). hiPS-SB5.1 cells (p10) were differentiated into EBs. L1 transcript levels were quantified on day 0 before initiation of differentiation, and after 2, 4, 6 and 8 days of differentiation by qRT-PCR (right panel); $^{***}P < 0.001$, linear regression *t*-test). Bars represent arithmetic means \pm s.d. from experiments performed as technical duplicates of biological triplicates, or, in the case of hCBEC, hCBiPS1 and hCBiPS2 (green bars), arithmetic means of technical duplicates of one biological sample. (c) Northern analysis of cytoplasmic poly-A⁺ mRNA with a 1,299-bp L1 5'UTR-specific probe confirmed exceeding activation of FL-L1 transcription during hiPSC cultivation. β -Actin mRNA (1.8 kb, lower panel) served as loading control. (d) Endogenous L1 promoter sequences are significantly hypomethylated in hiPSC lines relative to their parental HFF-1 and hCBEC cells. Overall percentage methylation of 5'UTR CpG islands in HFF-1 and hCBEC cells ($n = 29$ CpG islands; blue bar) and in five derived hiPSC lines ($n = 95$ CpG islands; red bar), respectively, is presented. Error bars indicate s.e.m. $^{***}P < 0.001$; χ^2 test. (e) Immunoblot analysis of cell lysates from HFF-1 and hCBEC cells and their respective derived hiPSC lines measures L1 ORF1p (40 kDa) and Oct-3/4 expression (A isoform, 45 kDa; B isoform 33 kDa). Shorter (exp.1) and longer exposures (exp.2) of the α Oct-3/4 immunoblot are provided. Lysates from hESC lines HES-3 (left panel) and H1 (right panel) served as positive control for L1 ORF1p and Oct-3/4 expression. β -Actin (42 kDa) served as loading control.

Table 1 | Analysed pluripotent stem cell lines and their characteristics.

Stem cell line	Parental cells		Reprogramming factors	Factor delivery by	Reference	Passages (p) assayed by RC-seq
	Name	Description				
hiPS-SB4	HFF-1	Foreskin fibroblasts (male)	OCT-4, SOX2, KLF4 and c-MYC	Sleeping Beauty transposon	26	43, 53
hiPS-SB5			OCT-4, SOX2, KLF4, c-MYC and LIN28			40, 59
hiPS-CRL1502	CRL1502	Dermal fibroblasts (female)	OCT-4, SOX2, NANOG, LIN28, KLF4 and c-MYC	oriP/EBNA1-based pCEP4 episomal vector	25	15, 40
hiPS-CRL2429	CRL2429	Dermal fibroblasts (male)				11, 40
hiPS-FB	FB	Dermal fibroblasts (female)	OCT-4, SOX2, KLF4 and c-MYC	Lentiviral vector	68	7, 23
hFF-iPS4	HFF-1	Foreskin fibroblasts (male)	OCT-4, SOX2, NANOG and LIN28		Unpublished	58
hCBiPS1	hCBEC	Cord blood-derived endothelial cells (male)	OCT-4, SOX2, NANOG and LIN28		27	30
hCBiPS2						23
HES-3	hESC lines		NA	NA	73	92, 102
H9					74	30, 60
HESG					Unpublished	10, 23

**Figure 2 | Immunofluorescence staining of hiPSC colonies and their parental cells for endogenous L1 ORF1p expression in HFF-1-derived hiPSCs.**

(a) ORF1p staining indicates activation of endogenous L1 expression after reprogramming of HFF-1 cells into lines hiPS-SB4, hiPS-SB5 and hFF-iPS4. Cells were analysed at passages (p) 23, 16 and 60, respectively. Oct-3/4 staining confirmed the pluripotent status of the analysed stem cell colonies. Mesenchymal stem cell marker CD105 (endoglin) is reported to be expressed in HFF-1 cells but not expressed in pluripotent stem cells. (b) Enlarged areas indicated by boxed dashes in **a** demonstrate cytoplasmic localization of endogenous L1 ORF1p and its accumulation in foci. Scale bars, 20 μ m.

provided high-fidelity, single nucleotide resolution of insertions absent from the reference genome, even at low read depth³³.

We analysed all eight hiPSC lines and their matched parental cells by RC-seq. For five fibroblast-derived hiPSC lines (Table 1),

we included two separate passages each to detect mobilization events that may have accumulated during cell culture. Similarly, we analysed two passages each of three hESC lines to evaluate endogenous retrotransposition during hESC cultivation (Table 1).

RC-seq detected a total number of 40,608 non-reference retrotransposon insertions including on average 214 L1, 1,411 *Alu*, 53 SVA and 14 LTR non-reference genome insertions per hiPSC and hESC sample (Supplementary Fig. 7; Supplementary Data 1). Insertions were annotated as *de novo* in pluripotent cells if they were not (i) reported previously in non-reference retrotransposon insertion databases^{9,12,33–38}, (ii) found in parental cells, (iii) found in an earlier hESC passage or (iv) found in multiple hiPSC or hESC lines. In total, we detected eight L1, seven *Alu* and two SVA putative *de novo* insertions (Supplementary Data 1). We found no *de novo* LTR retrotransposon insertions, despite observing profound upregulation of HERV-K group HML-2 transcription in hiPSCs and hESCs (Supplementary Methods; Supplementary Fig. 8).

Five retrotransposon subfamilies (L1-Ta, L1 pre-Ta, *AluYb8*, *AluYa5* and *SVA_E*) known to be active in humans contributed putative *de novo* insertions^{10,11,39}. These were first validated by genotyping PCR, with seven L1, two *Alu* and one SVA insertion confirmed as *de novo* in hiPSCs and a single *Alu* insertion (*Alu-2*) in hESCs (Fig. 3a; Supplementary Figs 9 and 10; Supplementary Table 3). The remaining six putative *de novo* insertions (one L1, four *Alu* and one SVA) were detected by PCR in parental cells or an earlier hESC passage, suggesting that these variants were present but were not *de novo*. Next, we determined the entire nucleotide sequence of 10/11 confirmed *de novo* retrotransposon insertions (Supplementary Figs 9 and 10). For one event, SVA-2, a member of the *SVA_E* subfamily, we could sequence only the 3' junction, which included a poly-A tail characteristic of L1-mediated *trans* mobilization (Fig. 3a; Supplementary Fig. 9). Our efforts to PCR amplify the matching 5' junction of SVA-2 with multiple primer combinations, intended to detect a possible 5' SVA truncation or a small proximal genomic deletion, were unsuccessful (see Methods). One reasonable explanation for this outcome was the occurrence of a large 5' genomic deletion at the SVA-2 integration site, as reported previously^{13,40–42}. Additional sequence analyses revealed that 9/10 of the remaining insertions exhibited the canonical hallmarks of L1-mediated target-primed reverse transcription^{8,43} including: (i) a target site duplication (TSD), (ii) a variable length L1 poly-A tail and (iii) an integration site resembling the L1 endonuclease target motif 5'-TTTT/AA-3' (refs 44,45; Fig. 3a; Supplementary Fig. 9). The one exception, insertion L1-dn4, was 3' truncated within its poly-A signal and devoid of an L1 endonuclease motif, but nevertheless incorporated an 8-bp TSD. These features were consistent with L1 endonuclease-independent retrotransposition⁴⁶. Insertions L1-dn6 and L1-dn14 presented one and two untemplated G nucleotides at their 5' ends, respectively, as seen elsewhere^{40,42}. Insertions L1-dn3, L1-dn4, L1-dn13 and L1-dn15 exhibited microcomplementarities of one to five nucleotides at their

5' end, a structural feature reported previously for L1 integration sites⁴⁷. L1-dn13 and L1-dn15 were also 5' truncated and inverted, consistent with 'twin-priming'⁴⁸, and in one instance a 5' inversion was displaced from the remaining L1 sequence by a 25-bp DNA fragment of unknown origin (L1-dn15). Thus, L1-mediated retrotransposition in hiPSCs and hESCs occurs via mechanisms described previously in mammalian cells.

The rate of L1-mediated retrotransposition occurring in pluripotent stem cells was difficult to accurately assess given the unknown genomic heterogeneity of each population. However, by estimating the sensitivity of RC-seq, we were able to determine the approximate L1 mobilization rate in hiPSCs. First, we identified that the overall RC-seq false positive rate was 1.5%, based on our recent PCR validation rate of 98.5% for insertions found by RC-seq in a cohort of hepatocellular carcinoma patients³³ using the same detection thresholds as used here. Next, we determined that 88.5, 92.8, 88.3 and 89.8% of germline L1, *Alu*, SVA and LTR insertions, respectively, found in a parental cell line or early hESC passage were also detected in the matched hiPSC or later hESC passage, indicating an overall RC-seq false negative rate of 7.9%. To then model the sensitivity of RC-seq for *de novo* insertions, we randomly sampled each library and determined the fraction of the total germline events detected in that library as a function of sampling depth (Supplementary Fig. 11). At 50% library sampling depth (that is, modelling 50% variant allele fraction) 71.4%, 76.2%, 68.4% and 87.3%, respectively, of the germline L1, *Alu*, SVA and LTR insertions found in hiPSC lines were detected, dropping to 5.9%, 5.8%, 7.4% and 27.1% at 5% sampling depth. The estimated overall false negative rates at 50% and 5% variant allele fraction for *de novo* insertions detected in hiPSC lines were therefore 30.5% and 94.4%, respectively. These figures were similar for hESC lines (31.5 and 94.1%). Thus, we concluded that although RC-seq reliably detected high variant allele fraction retrotransposon insertions, a large pool of low variant allele fraction events may have been overlooked at the RC-seq thresholds used here. This would be particularly acute in the chosen hESC lines where, unlike iPSCs, cells had not undergone a recent population bottleneck *in vitro*. Using these parameters and the observed *de novo* L1 insertion counts, we estimated that hiPSC lines carried 3.7 *de novo* L1 insertions with allele frequencies $\geq 5\%$, on average, extrapolating to ~ 1 *de novo* L1 insertion per cell (see Methods). However, the low number of insertions identified precluded similar estimates for hESC lines.

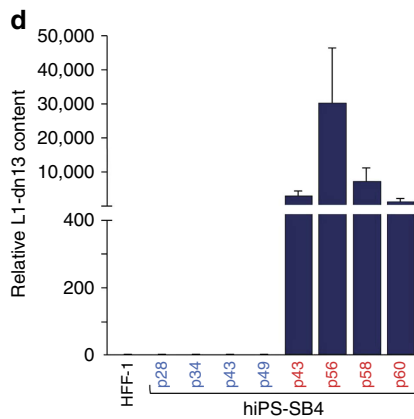
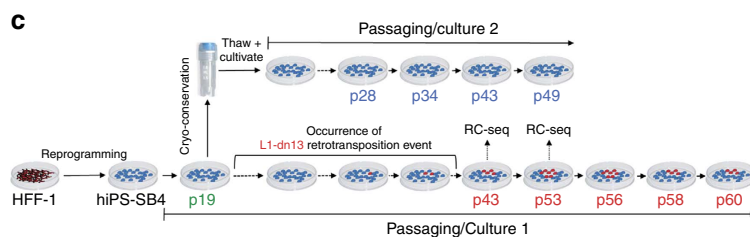
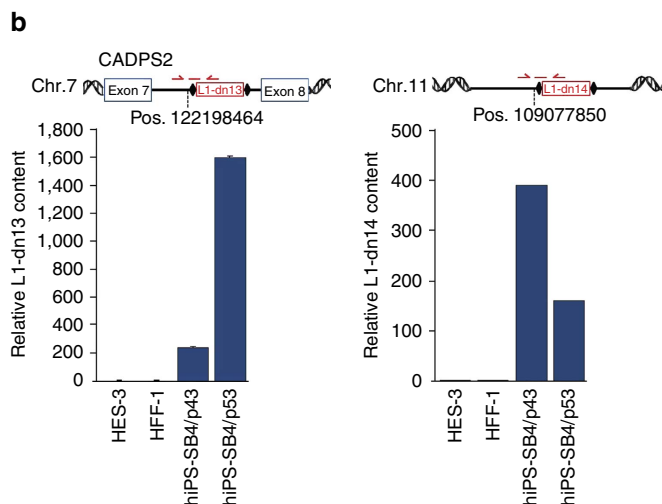
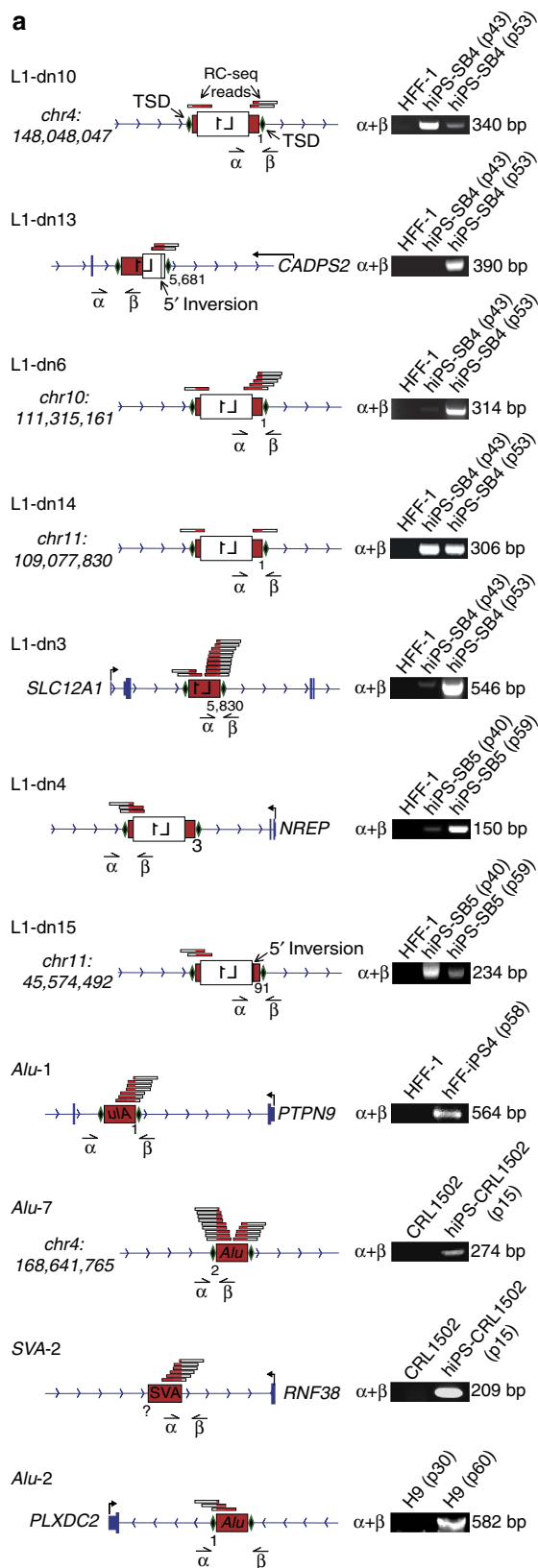
hiPSC cultivation causes individual L1 copy-number variation.

Our qualitative L1 insertion site validation PCR experiments (Fig. 3a) indicated that some *de novo* L1 insertions detected by

Figure 3 | RC-seq reveals endogenous *de novo* L1, *Alu* and SVA retrotransposition in pluripotent stem cells. (a) Structures of validated *de novo* L1, *Alu* and SVA retrotransposon events (red box, untranslated region; white box, L1 ORF; green diamonds, TSDs). Names of insertions (for example, L1-dn10), and gene (for example, *SLC12A1*) or chromosomal positions for intergenic insertions are listed. RC-seq reads are aligned above the insertions (red/white bars). Nucleotide positions at 5' ends of L1 and *Alu* insertions refer to L1.3 and *AluYb8* reference sequences, respectively. Corresponding validation PCRs are presented on the right. α and β , validation primers. (b) Relative L1-dn13 and L1-dn14 copy numbers at hiPS-SB4 passages 43 and 53 were determined by qPCR. Binding sites of the TaqMan primer/probe combinations specific for the 5' junctions of insertions L1-dn13 or L1-dn14 are shown (Top panels, red arrows and lines). Genomic DNAs from parental HFF-1 cells, and HES-3 cells served as negative controls. For normalization, a primer/probe combination specific for the human single-copy gene *RPP25* was used. $\Delta\Delta\text{Ct}$ values measured the relative L1-dn13 and L1-dn14 insertion content, respectively, normalized to the parental cell line HFF-1. Bars, arithmetic means \pm s.e.m. of technical triplicates. Due to the minimal s.e.m. observed in the L1-dn14-specific qPCR (right panel), error bars are not visible. (c) Passaging scheme of the hiPS-SB4 line harbouring L1-dn13. After reprogramming of HFF-1 cells into the hiPS-SB4 line, hiPSCs were cultivated for 60 passages (culture 1). Genomic DNA (gDNA) was isolated from culture 1 at passages shown in red. Cells of passage 19 were split and half of the culture was cryo-preserved and cultivated again after several weeks of cryo-preservation (culture 2). gDNA was isolated from passages shown in blue. (d) Relative L1-dn13 content at passages 43, 56, 58 and 60 of culture 1 (red lettering) and at passages 28, 34, 43 and 49 of culture 2 (blue lettering) were quantified by qPCR. L1-dn13 is present in passages 43 to 60 of culture 1, but absent from culture 2.

RC-seq were absent from the earlier hiPSC passage surveyed and therefore may have arisen after reprogramming. To better establish the temporal dynamics of L1 retrotransposition in hiPSCs, we performed multiplex TaqMan qPCR incorporating a 5' junction-spanning probe (Fig. 3b) to quantify L1-dn13 and

L1-dn14 copy-number variation in hiPS-SB4. We observed an eightfold increase in L1-dn13 copy number upon extended cultivation (Fig. 3b, left panel) and a ~two-fold decrease in L1-dn14 copy number (Fig. 3b, right panel), indicating the presence of two different hiPS-SB4 subpopulations carrying



insertions L1-dn13 or L1-dn14, respectively, with opposite growth dynamics. L1-dn13 and L1-dn14 were not detected in hESCs (HES-3) or the parental fibroblast (HFF-1) population, again showing that L1-dn13 and L1-dn14 were *de novo* insertions. As the hiPS-SB4 line was cultivated from a single-cell-derived hiPSC clone, these data showed that either one or both of these insertions occurred during or after reprogramming, confirming our RC-seq and genotyping PCR data. To discriminate whether L1-dn13 arose during hiPSC reprogramming or cultivation, we thawed and extensively cultivated a passage (p19) of hiPS-SB4 isolated well before the later passages analysed by RC-seq (p43 and p53) (Fig. 3c). L1-dn13 was not detected by qPCR in this second hiPS-SB4 cultivar (Fig. 3d). Hence, L1-dn13 likely arose in the original hiPS-SB4 cultivar between p19 and p43. We concluded that cultivation of hiPSCs, and hESCs, as described above for the *Alu-2* insertion (Fig. 3a), can lead to endogenous retrotransposition.

De novo L1 insertions retain retrotransposition competency.

Intriguingly, 4/7 *de novo* L1 insertions were full length, a surprising result given that most preexisting genomic L1 retrotransposition events are 5' truncated⁴⁹. Indeed, only ~15% of L1 copies in the reference genome and <1% of somatic L1 insertions found thus far in tumours are full length^{33,50,51}. PCR amplification and sequencing of three full-length *de novo* L1s (L1-dn4, L1-dn6 and L1-dn14) revealed no deleterious nonsense mutations in their ORFs (Supplementary Fig. 10), suggesting each insertion likely retained retrotransposition competency. As a proof-of-principle, we used an established cell culture-based L1 retrotransposition reporter assay⁵² to evaluate the mobility of L1-dn6 in HeLa cells. L1-dn6 subclones retrotransposed at a relative efficiency of 20–30% of that obtained for the benchmark L1.3 (accession no. L19088.1)⁵³ element (Fig. 4) and were therefore classified as highly active or 'hot'^{9,11}. These data indicated that new, full-length L1 insertions in hiPSCs could retain substantial competence in initiating further rounds of mobilization.

L1 insertional mutagenesis disrupts *CADPS2* expression.

Six *de novo* retrotransposition events mapped to introns of protein-coding genes. These included key factors in neuron (*CADPS2* and *NREP*) and nephron (*SLC12A1*) biology, as well as genes with established and predicted roles in cell cycle regulation and oncogenesis (*PTPN9*, *RNF38* and *PLXDC2*). Insertions showed a marked bias for the 5' end of genes, with insertions falling on average in the 20th percentile of gene length measured from the annotated RefSeq transcription start site (TSS), a significant deviation from random expectation ($P < 0.006$, permutation test). Albeit based on a small sample of insertions, this outcome could be explained by L1 endonuclease preference for open chromatin⁵⁴ and increased chromatin accessibility around transcription start sites⁵⁵.

Given that intronic L1 insertions can disrupt host gene transcription^{8,15,56}, we noted with interest that all six genes were expressed in hiPSCs and hESCs⁵⁷. For example, L1-dn13 occurred in an intron of *CADPS2* and, as noted above, exhibited copy-number variation during hiPSC cultivation (Fig. 3b,d). This afforded us an opportunity to analyse differential *CADPS2* expression with reference to L1-dn13 copy number. First, we measured and compared *CADPS2* mRNA expression in early versus late hiPS-SB4 passages via TaqMan qRT-PCR (Fig. 5a) and observed a fivefold reduction in *CADPS2* expression in the latter cells (Fig. 5b). Importantly, this assay tested *CADPS2* expression at an exon junction located downstream of the L1-dn13 integration site (Fig. 5a) and indicated opposing changes

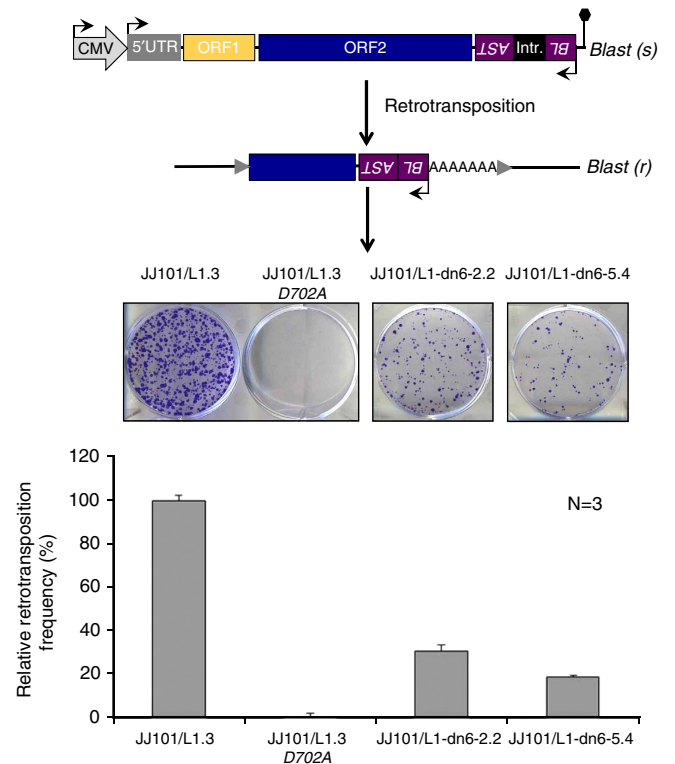


Figure 4 | De novo full-length L1 insertions retain retrotransposition competency *in vitro*. Intact, full-length L1 insertions L1-dn6-2.2 and L1-dn6-5.4 were obtained from two independent genomic PCR reactions amplifying the L1-dn6 *de novo* insertion, tagged with an *mblastI* retrotransposition indicator cassette, and inserted into an episomal expression plasmid where they were transcriptionally controlled by the CMV promoter. Resulting L1 reporter plasmids pJJ101/L1-dn6-2.2 and pJJ101/L1-dn6-5.4 were submitted to the L1 retrotransposition reporter assay (see Methods). HeLa cells were transfected with the L1-dn6 reporter plasmids or with positive and negative control L1 reporter plasmids pJJ101/L1.3 and pJJ101/L1.3-D702A, respectively. Blastidicin-S resistant cells arise only if engineered L1 retrotransposition has occurred. pJJ101/L1.3 was used for normalization (100% activity). pJJ101/L1.3-D702A contains a single point mutation in the L1 reverse transcriptase domain. The bar diagram depicts arithmetic mean \pm s.d. of three independent retrotransposition reporter assays of the engineered L1-dn6 elements relative to L1.3. Black hexagon, SV40 polyadenylation signal; grey arrows, TSDs flanking a 5'-truncated *de novo* L1 insertion. Blast(s), Blastidicin-S sensitive; Blast(r), Blastidicin-S resistant; SD, splice donor; SA, splice acceptor.

in L1-dn13 copy number (Fig. 3b, left panel) and *CADPS2* expression for hiPS-SB4 cells in culture, suggesting that L1-dn13 interfered with *CADPS2* expression.

To further test this possibility, we employed a human triose phosphate isomerase/Renilla luciferase reporter assay developed to monitor the effects of different introns on mammalian gene expression⁵⁸. We generated three constructs (Supplementary Methods; Supplementary Fig. 12a,b) respectively containing: (i) 825 bp spanning the empty L1-dn13 target intron of *CADPS2* (pSHM06_01), (ii) 423 bp spanning the same region but in this case containing the 389 bp L1-dn13 insertion and its TSDs to produce a 825 bp sequence (pSHM06_02) and (iii) the 423 bp sequence on its own (pSHM06_03). We cloned each of these fragments into the triose phosphate isomerase/Renilla reporter cassette and quantified their effect on luciferase activity (Supplementary Fig. 12c). Interestingly, the *CADPS2* intron sequence harbouring L1-dn13 (pSHM06_03) had the strongest inhibitory effect and reduced

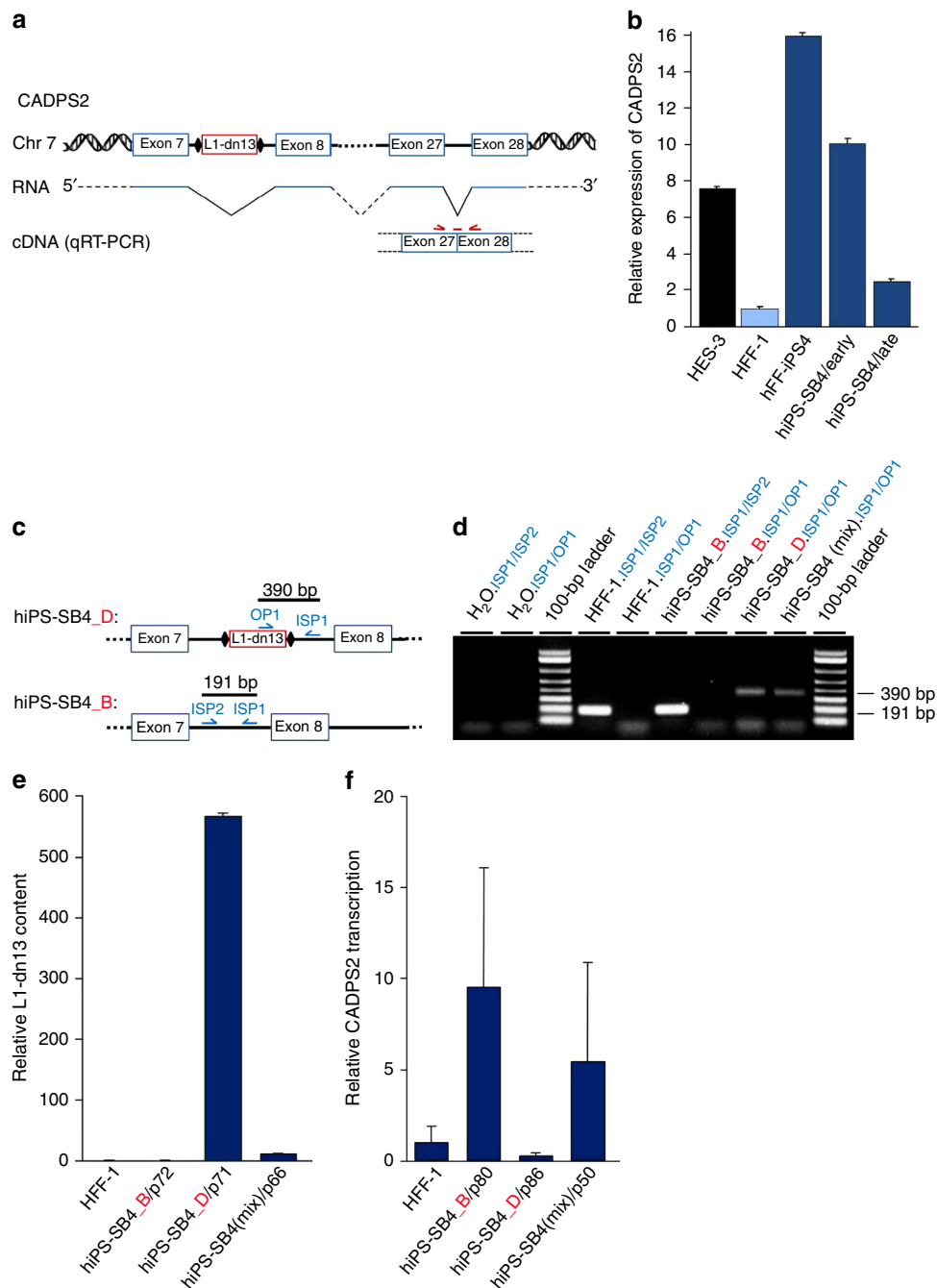


Figure 5 | L1-dn13 affects CADPS2 expression. (a) Schematic of the human CADPS2 allele of the hiPS-SB4 line harbouring insertion L1-dn13. A CADPS2 transcript including exons 7, 8, 27 and 28 is presented. Binding sites of the TaqMan primer/probe combination spanning the exon27/exon28 junction on CADPS2 cDNA used for qRT-PCR analysis are shown (red arrows and line). (b) Relative CADPS2 mRNA levels in early (p16) and late passage (p50) hiPS-SB4 cells were assessed by qRT-PCR. HES-3 and HFF-iPS4 cells served as positive controls. qRT-PCR results were normalized to 18S rRNA using CADPS2 expression in parental HFF-1 cells as control. Bars, arithmetic means \pm s.e.m. of technical triplicates. (c) Structure of the L1-dn13 integration site in the CADPS2 gene in hiPS-SB4 subclones. hiPS-SB4_D differs from hiPS-SB4_B by the presence of the L1-dn13 *de novo* insertion in CADPS2 intron 7. Binding sites of L1-dn13-specific validation PCR primers OP1, ISP1 and ISP2 and expected lengths of the resulting PCR products are indicated. Black diamonds, TSDs. (d) Genotyping PCR validating the L1-dn13 presence in subclone hiPS-SB4_D and its absence from hiPS-SB4_B in gDNAs isolated from HFF-1, hiPS-SB4_B, and hiPS-SB4_D cells and from the original mixed population of the hiPS-SB4 culture (hiPS-SB4(Mix)). Primer combinations used are indicated in blue; H₂O.ISP1/ISP2 and H₂O.ISP1/OP1, negative control PCRs using H₂O instead of gDNA; 100-bp ladder, size marker. (e) qPCR analyses confirming absence of L1-dn13 from hiPS-SB4_B and HFF-1 cells, and its presence in hiPS-SB4_D cells and the hiPS-SB4 culture. gDNAs from HFF-1 cells and from hiPS-SB4(Mix) cells served as negative and positive controls, respectively. For normalization, a primer/probe combination specific for the human *RPP25* gene was used. $\Delta\Delta$ Ct values measured the relative quantity of L1-dn13. Bars, arithmetic means \pm s.e.m. of technical triplicates. (f) Relative CADPS2 mRNA levels in hiPS-SB4_B, hiPS-SB4_D and hiPS-SB4(Mix) cells were determined by qRT-PCR using cytoplasmic RNA and primer/probe combinations spanning exon 27/exon 28 junction of CADPS2. Bars, arithmetic means \pm s.e.m. of technical triplicates.

luciferase activity by 62%, a significant decrease beyond the constructs lacking L1-dn13 ($P = 0.022$).

As further corollary, we isolated two clones from the original hiPS-SB4 culture by single cell cloning (see Methods) where L1-dn13 was identified by RC-seq, one carrying L1-dn13 (hiPS-SB4_D) and the other not carrying L1-dn13 (hiPS-SB4_B) (Fig. 5c). The identity of each clone was verified by genotyping PCR (Fig. 5d) and qPCR (Fig. 5e). qRT-PCR applied to cytoplasmic RNA extracted from each clone indicated that *CADPS2* expression was ~95% lower in hiPS-SB4_D than in hiPS-SB4_B (Fig. 5f). Consistently, *CADPS2* expression in the original hiPS-SB4 culture, which was heterogeneous for the L1-dn13 allele, was in between expression levels observed for the hiPS-SB4_D and hiPS-SB4_B clones. We then employed end point quantitative RT-PCR⁵⁹ with subsequent capillary electrophoresis to compare the relative expression of each *CADPS2* allele in hiPS-SB4_D (Supplementary Methods; Supplementary Fig. 13), as distinguished by a single nucleotide polymorphism located in the 3'UTR of *CADPS2*. Notably, L1-dn13 was associated with complete silencing of the *CADPS2* mutant allele in hiPS-SB4_D while, interestingly, the *CADPS2* wild-type allele was also downregulated by >90% relative to hiPS-SB4_B. Again, expression of each *CADPS2* allele in the hiPS-SB4 culture heterogeneous for L1-dn13 lay between levels observed for the hiPS-SB4_B and hiPS-SB4_D subclones. Altogether, these results conclusively indicate that L1-dn13 interfered with *CADPS2* expression.

Discussion

Here we have demonstrated that endogenous L1-mediated retrotransposition can occur in hiPSCs and hESCs, building upon earlier reports of engineered L1 retrotransposition in stem cells^{13,20,22,60}. By contrast, two previous studies reported an absence of endogenous retrotransposition events in mouse or human iPSCs^{23,24}. A more recent study reported low-level L1 mobilization in hiPSCs⁶¹, though in this case no insertions could be confirmed by PCR, leaving the validity of the reported putative L1 insertions unclear. We unequivocally demonstrated here by RC-seq, gold-standard PCR validation and capillary sequencing, including L1 integration site structural characterization, that fibroblast-derived hiPSCs clearly can support the mobilization of endogenous non-LTR retrotransposons. We speculate that our use of clonally derived hiPSCs, and the robustness of RC-seq in detecting somatic L1 insertions^{33,34}, enabled us to discover retrotransposition events that may have otherwise remained undetected.

We estimated that hiPSCs each carried ~1 *de novo* L1 insertion, with the notable caveat that this calculation was based on a small number of observed events. Nonetheless, this is a much lower rate than recently found for human hippocampal neurons and glia (13.7 and 6.5 somatic L1 insertions per cell, respectively)⁶². Our sensitivity calculations suggested that most *de novo* insertions with a variant allele fraction of <5% in hiPSC and hESC populations were overlooked by RC-seq at the detection thresholds used here, and these were not included in the above rate estimate. This is a major consideration in concluding whether parental cell type or choice of reprogramming vector affects endogenous retrotransposition activity in hiPSCs. Low frequency or subclonal retrotransposition may indeed occur in our hCBEC-derived hiPSC lines, that were reprogrammed via lentiviral systems, and escaped detection by RC-seq here. Therefore, we would propose that additional experiments are required to better define how these and other considerations (for example, cultivation protocol) affect L1 activity. Indeed, one explanation for the low number of insertions characterized in

hESCs is that these cell populations were not clonally derived and were therefore likely to present more extensive genomic heterogeneity than hiPSCs. The lone *Alu* insertion found here in H9 cells is nonetheless the first endogenous retrotransposition event reported in hESCs, reinforcing evidence that L1-mediated mobilization can occur in early human development^{13,63}.

L1 activity was highly dynamic during reprogramming and hiPSC cultivation. Parental cells, early hiPSC passages, later hiPSC passages and re-differentiated cells presented grossly different levels of L1 expression. As corroborated by RC-seq, genotyping PCR and qPCR, the majority of retrotransposition in hiPSCs likely took place during or immediately after reprogramming, where we observed a peak in expression of the L1 mobilization machinery. As a result, each detected variant could affect substantial hiPSC subpopulations. Interestingly, major induction of L1 mRNA and protein expression, far in excess of that seen in hESCs and neural stem cells^{13,60}, was accompanied by a comparatively modest increase in L1 mobilization rate. Due to drastic epigenetic changes occurring upon reprogramming, it is possible that reprogramming *per se* may activate the expression of cellular L1 restriction factors such as APOBEC proteins²² and PIWIL2 (ref. 64). Consistently, APOBEC3B and PIWIL2 have been demonstrated to control engineered L1 retrotransposition in hiPSCs^{22,64}. Thus, it is tempting to speculate that the cellular milieu of hiPSCs and hESCs may permit L1 upregulation but also limit L1-mediated mutagenesis.

That 4/7 of the *de novo* L1 insertions reported here were full-length was consistent with 2/3 of the engineered L1 *de novo* insertions characterized by Wissing *et al.* also being full-length²⁰. This >50% incidence of full-length L1 *de novo* insertions in hiPSCs is unexpected as only ~15% of L1 copies in the human reference genome and <1% of somatic L1 insertions identified in tumours are full length^{33,36,50,51}. However, 7/7 engineered L1 retrotransposition events found in hESCs were recently reported to be significantly 5' truncated¹³, suggesting that pluripotency factors common to hiPSCs and hESCs might not play any role in the observed overrepresentation of full-length *de novo* L1 insertions found in hiPSCs. The mechanism of L1 5' truncation is not fully understood. On one hand, the preponderance of 5' truncated L1 copies in the genome has long been explained by an inability of the L1 reverse transcriptase encoded by L1 ORF2p to copy the entire template L1 RNA, either due to premature dissociation of the L1 reverse transcriptase from its RNA or competition from an unknown cellular RNase that digests the L1 RNA before completion of reverse transcription⁶⁵. Therefore, it is possible that hiPSCs provide a nuclear environment allowing a more stable association of the L1 reverse transcriptase with L1 RNA, or the L1 reverse transcriptase does not have to compete with a cellular RNase which might be differentially expressed in hiPSCs. On the other hand, a recent study demonstrated that the DNA-damage-signalling protein ATM may control the length or number of *de novo* L1 insertions in human neural stem cells⁶⁶. Thus, it is possible that subtle differences in the DNA repair mechanisms operating in hiPSCs and hESCs could be related to the high frequency of full-length L1 insertions characterized in hiPSCs.

Each *de novo* L1 insertion reported here integrated in a protein-coding gene expressed in pluripotent cells. In one case, we identified an L1 insertion (L1-dn13) that arose during hiPSC cultivation and integrated into an intron of the gene *CADPS2*. It remains to be determined whether acquisition of L1-dn13, and a concurrent reduction in *CADPS2* expression, imbued carrier hiPSCs with a selective advantage *in vitro*. Furthermore, it remains unclear why transcription of the *CADPS2* allele lacking L1-dn13 was reduced by >90%. To speculate, it is possible that

CADPS2 expression involves a direct or indirect positive feedback loop where, for example, transcription from *CADPS2* reinforces open chromatin⁶⁷. A reduction in *CADPS2* expression caused by L1-dn13 could hence have a strongly negative effect on transcription from the wild-type *CADPS2* allele.

In closing, it is notable that intronic L1, *Alu* and SVA insertions can alter cellular phenotype and are associated with numerous instances of human disease⁵⁶. Future in-depth experiments are however required to definitively establish whether endogenous retrotransposition alters the phenotype of hiPSC derivatives sufficiently to impact their use in medical or research applications. We can nevertheless conclude that retrotransposition, in addition to other sources of genetic and epigenetic variation^{2–6}, can change the functional landscape of the hiPSC genome.

Methods

Cell lines and culture conditions. hiPSC lines hiPS-SB4 (hFF-T2-OSKM) and hiPS-SB5 (hFF-T2-OSKML)/hiPS-SB5.1 (hiPS-OSKML#6) were generated by reprogramming HFF-1 cells (ATCC-Number: SCRC-1041) using Sleeping Beauty (SB) transposon-based plasmids pT2-OSKM or pT2-OSKML which contain polycistronic OSKM (*OCT4*, *SOX2*, *KLF4* and *c-myc*) or OSKML (OSKM + *LIN28*) expression cassettes²⁶. Briefly, HFF-1 cells (4×10^5 cells per well) were transfected by nucleofection (Lonza) according to the manufacturer's instructions. In each transfection, 2 μ g of transposon plasmid (pT2-OSKM or pT2-OSKML) and 0.2 μ g of CMV-SB100X vector (harbouring the enhanced Sleeping Beauty transposase gene under control of a CMV promoter²⁶) were used. After transfection cells were plated onto Matrigel-coated six-well plates (hESC-qualified Matrix, BD Biosciences) and were grown in MEF-conditioned ESC medium used for the cultivation of hESCs and hiPSCs. ESC medium consisted of Knockout DMEM (Life Technologies) supplemented with 4 ng ml⁻¹ basic fibroblast growth factor 2 (FGF2, Invitrogen), 20% Knockout Serum Replacement (Gibco), 1 mM L-glutamine (Biochrom AG), 50 μ M β -mercaptoethanol and 0.1 mM nonessential amino acids. The medium was replaced every day. Newly formed hiPSC colonies were picked, transferred to Matrigel-coated 24-well plates, and expanded for 4–6 days in MEF-conditioned ESC medium. Subsequently, cells were trypsin dissociated, plated onto feeder cells and cultivated in ESC medium.

In this experiment, cells nucleofected with SB-OSKM gave rise to only one hiPSC colony. Nucleofection with SB-OSKML resulted in several hiPSC colonies. Multiple SB-OSKML colonies were picked and transferred onto the same Matrigel-coated wells. After establishing a mixed culture of hiPSCs generated with either SB-OSKM or SB-OSKML, single-cell-derived hiPSC clones were generated by single-cell dilution using cell sorting (see below) based on their positivity for SSEA4. Six SB-OSKML hiPSC clones and one SB-OSKM hiPSC clone were then characterized for pluripotency and differentiation potential as described²⁶. Two SB-OSKM hiPSC clones (hiPS-SB5 and hiPS-SB5.1) and the only SB-OSKM hiPSC clone (hiPS-SB4) obtained were used in this study.

The lines hiPS-CRL1502 (ref. 25), hiPS-CRL2429 (ref. 25), hCBiPS1 (ref. 27), hCBiPS2 (ref. 27) and hiPS-FB⁶⁸ have been described previously. hFF-iPS4 was produced using HFF-1 cells and a lentiviral vector expressing reprogramming factors Oct-4, Sox2, Nanog and Lin28 (ref. 27). Successful reprogramming for the hFF-iPS4 cell line was verified by morphology, pluripotency marker expression (Supplementary Fig. 2), karyotype analysis and the ability to generate teratomas on immunocompromised mice.

hESC lines H1, H9 and HES-3 were purchased from the WiCell Research Institute (Madison, WI, USA) and Cythera Inc. (San Diego, CA, USA). The H1 line was used exclusively for the isolation of cell lysate that was loaded as positive control of the immunoblot analysis in Fig. 1e, right panel. hESC line HESG (GENEA23) was purchased from GENEA Biocells (<http://www.geneastemcells.com.au>). It formed well-defined colonies with compact cells displaying a high nuclear to cytoplasmic ratio and prominent nucleoli. Karyotype analysis (46 chromosomes, XY male) did not uncover any abnormalities at passage 42. HESG cells express pluripotency markers Nanog, Oct-4, Tra1-60 and SSEA4, stain positive for alkaline phosphatase and form teratomas. As for hiPSCs, hESCs were grown on gelatin-coated six-well plates (Greiner) on inactivated mouse embryonic fibroblasts (MEFs, passage 3, strain CF1; Merck Millipore, Catalogue Number: PMEFL-CFL). MEFs were expanded and mitotically inactivated by γ -irradiation with a Cesium source with 30 Gy after 3–7 passages, and stored in liquid nitrogen until further use. After thawing, MEFs were seeded at a density of 6×10^5 cells per well of a six-well plate. hESC medium was replaced daily and cells were passaged at a 1:2 dilution every 5 days using splitting medium (1 mg ml⁻¹ collagenase IV (Gibco, Darmstadt, Germany) in KO-DMEM).

Cell sorting. hiPSCs were washed once in PBS containing 0.5% bovine serum albumin, and incubated for 30 min with allophycocyanin-conjugated anti-human SSEA4 antibody (R&D Systems). In all samples an anti-mouse Sca-1 (Ly-6A/E) (FITC or PE conjugated, BD Pharmingen) antibody was employed, for gating out

the positively labelled mouse feeder cells. Samples were analysed and sorted using an Aria High Speed Cell Sorter (Becton-Dickinson).

Differentiation of hiPSCs into embryoid bodies and RNA extraction. In all experiments, hiPSCs grown on MEFs were detached from the feeder layer by adding 250 μ l Collagenase Type IV (1 mg ml⁻¹; Gibco) per well of a six-well tissue culture plate. Next, cells were resuspended in 750 μ l of ESC medium, transferred to a 15 ml conical tube and centrifuged at 800 r.p.m. in a Heraeus Multifuge 4KR for 3 min at room temperature. Subsequently, medium was removed, cells were resuspended in 3 ml of ESC medium without FGF2 and cultured for 1–16 days in T25 flasks (Greiner) containing 10 ml of ESC medium without FGF2. At the indicated time, embryoid bodies were harvested and cytoplasmic RNA was isolated as described below. Passage 10 of the hiPSC line hiPS-SB5.1 was cultured in one well of a GeltrexTM-coated six-well culture dish, and treated with collagenase IV (1 mg ml⁻¹) for 5 min. Cells were washed with warm PBS twice, and fed with 1 ml embryoid body formation medium (Knockout DMEM, 20% Knockout Serum Replacement, 1 mM L-Glutamine, 1% nonessential amino acids, 0.1 mM β -mercaptoethanol and Primocin (Invitrogen)) and split into small cell clumps. hiPSC colonies were then dissociated with collagenase IV (1 mg ml⁻¹) for 5 min, and split into small cell clumps. Cell clumps were transferred into three 10-cm low-attachment dishes and fed with embryoid body medium. The medium was changed every 2 days. Embryoid bodies were cultured for 8 days in total. Embryoid bodies were collected by sedimentation under gravity from three dishes on day 0 (undifferentiated hiPSCs), 2, 4, 6 and 8, respectively (Fig. 1b, right panel; Supplementary Fig. 6). Total RNA was extracted from each well using Trizol (Invitrogen) following the instructions of the manufacturer.

Analysis of expression in embryoid bodies by qRT-PCR. To analyse the expression of both pluripotency markers and L1, real-time quantitative RT-PCR was applied. To this end, 0.1 μ g total RNA per well was used for reverse transcription by using the High Capacity RNA-to-cDNA kit (Applied Biosystems). For each time point and transcript to be quantified, qRT-PCR analyses were done in triplicate. qRT-PCR for pluripotency/differentiation markers was carried out using Power SYBR Green PCR Master Mix (Applied Biosystems) on the ABI7900HT sequence detector (Applied Biosystems), and data was normalized to GAPDH expression. qRT-PCR for L1 was performed with Absolute QPCR Mix (ABgene), and data was normalized to 18S rRNA expression.

qRT-PCR using TaqMan fluorogenic probes. Cytoplasmic RNA was extracted from 5×10^6 to 3×10^7 somatic cells, hiPSCs or embryoid body cells using the RNeasy Midi Kit (Qiagen, Hilden, Germany) according to the manufacturer's instructions. Cytoplasmic RNA (0.5–1 μ g) was incubated with 2 U of RNase-free DNaseI (Life Technologies, Darmstadt, Germany) for 30 min at room temperature. DNaseI digestion was stopped by adding 2 μ l of 25 mM EDTA and incubation for 10 min at 65 °C. DNaseI-digested cytoplasmic RNA (0.1–0.5 μ g) was used for cDNA synthesis using the SuperScript III First-Strand Synthesis Kit (Invitrogen) in combination with a Random Hexamer Primer (0.5 μ g μ l⁻¹; Invitrogen) according to the manufacturer's instructions. Quantitative real-time PCR was carried out in ABgene plates using an Applied Biosystems 7900HT Fast Real-Time PCR System. The primer and probe combination L1 5'UTR#2 (ref. 60) was used to quantify transcripts expressed from endogenous L1-Ta copies. Sequences of oligonucleotides and probes used for qRT-PCR are listed in Supplementary Table 1. The probe specific for the L1 5'UTR was labelled with the reporter fluorochrome 6-carboxy-fluorescein (FAM) and a non-fluorescent quencher. 18S rRNA expression was quantified using Eukaryotic 18S rRNA endogenous control (VIC/TAMRA Probe, Primer Limited; Part number 4310893E, Applied Biosystems). Transcript levels of the human *CADPS2* gene were monitored using a gene specific assay (Life Technologies, Hs00604528_m1) spanning exon sequences (Fig. 5a). Cycling conditions were the following: 95 °C for 15 min (one cycle), 95 °C for 15 s and 60 °C for 1 min (40 cycles). A total of 1–5 μ l of cDNA per sample were used for the quantification of endogenous L1 and *CADPS2* mRNA levels. Analysis of real-time and end point fluorescence was performed using the software SDS version 2.3 as well as RQ manager 1.2 (Applied Biosystems).

Northern blot analysis. Total RNA was isolated from the cell lines HFF-1, 2102Ep (ref. 69), HES-3 and hiPS-SB4 using TRIzol (Invitrogen) according to the manufacturer's instructions. Poly(A)⁺ RNA was isolated applying the Dynabeads mRNA Purification Kit (Life Technologies) according to the manufacturer's instructions. Denatured mRNA (2.8 μ g) from each cell line was subjected to denaturing electrophoresis in a horizontal 1% agarose gel containing morpholinepropanesulfonic acid buffer and 6% formaldehyde, and transferred onto a Hybond-N⁺-Nylon membrane (Amersham) by overnight capillary transfer using 10 \times SSC as transfer buffer. A total of 4 μ l RiboLuer High Range RNA ladder (MBI Fermentas, St.Leon-Rot, Germany) were loaded as size marker. After crosslinking the RNA onto the membrane by 'baking' at 80 °C for 2 h, the membrane was prehybridized overnight in 50% Formamide/4xSSC/1%SDS/2 \times Denhardt's at 42 °C. The full-length L1 mRNA-specific probe was generated by PCR amplification of a 1299-bp L1 fragment ranging from position numbers (pos.) 58–1356 of a full-length L1 element by using primers L1_FW1 and L1_RV1 (Supplementary Table 1) and pJM101/L1_{RP}ACMV⁷⁰ as template. Pos. refer to the

L1.3 element⁵³ sequence (accession number L19088.1). A 491-bp β -actin mRNA-specific probe was generated by PCR amplification using primers actin_FW and actin_RV (Supplementary Table 1) and plasmid 31502 (Addgene⁷¹) as template. PCR fragments were labelled with [α -³²P]dCTP by applying the Nick Translation System (Invitrogen) according to the manufacturer's instructions.

After denaturing the probe for 10 min in boiling water and subsequent incubation for 10 min in ice water, the probe was added to the hybridization buffer (50% Formamide/4 \times SSC/1% SDS/1 \times Denhardt's) and the membrane was incubated in the probe-containing hybridization buffer overnight at 42 °C. Subsequently, the membrane was subjected to two 5 min low-stringency washes (2 \times SSC) at room temperature and one 30 min high-stringency wash (2 \times SSC/0.5%SDS) at 65 °C. The membrane was stripped by being boiled for 30 min in a solution of 10 mM tris-HCl (pH 7.5)/1 mM EDTA/1 mM SDS. The hybridized membrane was exposed to X-ray films for 5–10 days with intensifying screens.

Bisulfite DNA sequencing analyses. Bisulfite DNA sequencing analyses were performed as previously described^{20,60}. Briefly, genomic DNA from hiPSCs and parental cells was isolated at the indicated passage using DNazol Genomic DNA Isolation Reagent (MRC Inc, Cincinnati, OH, USA) according to the manufacturer's instructions. Next, 2 μ g of genomic DNA were bisulfite converted using an EpiTect Bisulfite Kit (Qiagen, Hilden, Germany) following manufacturer instructions, with a conversion efficiency of ~95%. To determine the DNA methylation status of L1-Ta promoters, we performed PCR sequencing using primers L1-FW2: 5'-AAGGGGTTAGGGAGTTTTTTT and L1-RV2: 5'-TATC TATACCCTACCCCAAAA. To this end, 300–500 ng of converted genomic DNA were used in a 50 μ l PCR reaction as follows: 2 min at 95 °C, 35 cycles of 30 s at 94 °C followed by 30 s at 54 °C and 60 s at 72 °C, and a final extension of 10 min at 72 °C. Amplified products were gel purified (QIAquick gel extraction kit, Qiagen), cloned in pGEM-T Easy (Promega) and at least 30 individual clones were sequenced for each sample. The unique sequence in each clone was analysed using RepeatMasker at <http://www.repeatmasker.org/cgi-bin/WEBRepeatMasker>. Next, the fraction of unmethylated CpG sites was calculated by comparison to a consensus L1-Ta sequence. In addition, each individual sequence was compared to L1.3 and only the sequences with the highest homology to this sequence were used to plot methylation data in single clones (Supplementary Fig. 3d). The proportion of CpG converted to TpG by bisulfite treatment was compared between samples using the χ^2 test (d.f. = 1; α = 0.05).

Immunoblot analysis. hiPSC colonies were detached from their tissue culture dish by incubation with 250 μ l of a 1 mg ml⁻¹ collagenase type IV/DMEM and washed subsequently in 1 \times PBS. Cells were spun down, resuspended in lysis buffer (50 mM Tris-HCl (pH 7.4), 150 mM NaCl, 10% Glycerin, 1% Triton X-100; 2 mM EDTA, 2 mM EGTA, 40 mM β -Glycerolphosphate disodium salt hydrate, 50 mM NaF, 10 mM Na₄P₂O₇, 200 μ M Na₃VO₄, 2 mM DTT; 1 \times complete protease inhibitor cocktail (Roche Applied Science)), homogenized by passing the lysate ten times through a 26 G needle, and lysates were cleared by centrifugation. A total of 50 μ g of each protein lysate were boiled in 3 \times SDS sample buffer (NEB), loaded on 4–12% Bis/Tris gels (Invitrogen), subjected to SDS-polyacrylamide gel electrophoresis, and electroblotted onto nitrocellulose membranes. After protein transfer, membranes were blocked for 2 h at room temperature in a 10% solution of non-fat milk powder in 1 \times PBS-T (137 mM NaCl, 3 mM KCl, 16.5 mM Na₂HPO₄, 1.5 mM KH₂PO₄, 0.05% Tween 20 (Sigma-Aldrich Chemie GmbH, Mannheim, Germany)), washed in 1 \times PBS-T, and incubated overnight with the respective primary antibody at 4 °C.

L1 ORF1p and Oct-4 proteins were detected using the polyclonal rabbit-anti-L1 ORF1p antibody #984 (ref. 41) at a 1:2,000 dilution and the Oct-3/4 (C10) antibody (sc-5279, Santa Cruz Biotechnology Inc., Santa Cruz, CA, USA) at a 1:750 dilution, respectively, in 1 \times PBS-T containing 5% milk powder as primary antibodies. Subsequently, membranes were washed thrice in 1 \times PBS-T. As secondary antibodies, we used HRP-conjugated donkey anti-rabbit IgG antibody at a 1:30,000 dilution to detect L1 ORF1p, and HRP-conjugated donkey anti-mouse IgG antibody at a 1:10,000 dilution (Amersham Biosciences) to detect Oct-3/4, in 1 \times PBS/5% milk powder and incubated the membrane for 2 h. Subsequently, the membrane was washed thrice for 10 min in 1 \times PBS-T. β -Actin expression was detected using a monoclonal anti- β -actin antibody (clone AC-74, Sigma-Aldrich Chemie GmbH, Steinheim, Germany) at a dilution of 1:30,000 as primary antibody and an anti-mouse HRP-linked species-specific antibody (from sheep) at a dilution of 1:10,000 as secondary antibody. Immunocomplexes were visualized using lumino-based ECL immunoblot reagent (Amersham Biosciences Europe GmbH, Freiburg, Germany). Details of the applied antibodies are listed in Supplementary Table 2. Full scans of immunoblots are presented in Supplementary Fig. 14.

Immunofluorescence staining. hiPSCs as well as their parental HFF-1 or hCBEC cells were grown on glass cover slips in 12-well plates. Cells were washed with 1 \times PBS, fixed with 4% paraformaldehyde in 1 \times PBS (pH 7.4) for 15 min at room temperature and permeabilized with 1% Triton X-100 (Sigma) in 1 \times PBS for 10 min at room temperature. Subsequently, cells were washed thrice for 2 min in 1 \times PBS. Cells were blocked by incubation with 5% (w/v) BSA/0.1% Triton X-100/1 \times PBS (pH 7.4) for 30 min at room temperature followed by incubation with the respective primary antibodies, which are listed in Supplementary Table 2,

for 1 h at room temperature in 5% BSA/1 \times PBS (pH 7.4). Subsequently, cells were washed three times with 1 \times PBS for 5 min each at room temperature. Cells were incubated with the appropriate secondary antibody: goat-anti-mouse IgG Alexa 488 or goat-anti-rabbit IgG Alexa 643 (Invitrogen) at 1:1,000 dilution in 5% BSA/1 \times PBS (pH 7.4) for 30 min at room temperature in the dark. Finally, preparations were washed thrice for 5 min each at room temperature using 1 \times PBS. Subsequently, cells were counterstained with DAPI (4,6-diamidino-2-phenylindole; Sigma-Aldrich), washed thrice with 1 \times PBS for 10 min at room temperature, embedded in Fluoromount G (Southern Biotech) and kept at 4 °C until further analysis. The analysis was performed using an Axio Observer A1 microscope (Carl Zeiss MicroImaging, Goettingen, Germany).

RC-seq library preparation, sequencing and analysis. Genomic DNA was isolated from 1 \times 10⁶ cells from each hESC and hiPSC line and their respective parental cells using DNazol Genomic DNA Isolation Reagent (MRC Inc, Cincinnati, OH, USA) according to the manufacturer's instructions. RC-seq and subsequent computational analyses were performed as described using the hg19 reference genome sequence³³. A total of 665,008,770 2 \times 150mer reads were generated from 24 libraries. A complete list of annotated *de novo* insertions supported by at least two unique amplicons separated by \geq 5 nt (the minimum threshold for reporting) is provided in Supplementary Data 1. To assess the RC-seq false negative rate, we randomly sampled each library in increments of 1% (10 samplings per percentile) and determined how many germline insertions were detected at the sampled depth by \geq 2 unique reads (Supplementary Fig. 11). To approximately assess the rate of L1 mobilization in hiPSCs, we again randomly sampled each RC-seq library to determine the probability of detecting each *de novo* L1 insertion with \geq 2 unique reads at a given sampling depth, normalized to the corresponding false negative rate identified above and then determined the cumulative sum of this distribution for frequencies of 5–100%, leading to an estimate of ~1 *de novo* L1 insertion per hiPSC. We did not consider *de novo* L1 insertions carried by fewer than 5% of hiPSCs in this estimate as none of the validated examples were routinely identified at that sampling depth. We also did not analyse the L1 mobilization rate in hESCs or the *Alu* or *SVA* rate in hiPSCs or hESCs due to the small number of confirmed true positive examples.

A permutation test showing enrichment for validated *de novo* L1 insertions at the 5' end of genes was performed by random sampling of genomic coordinates, with respect to RefSeq annotations. 1 \times 10⁶ permutations were performed and in 6,000 instances the average position was less than the 20th percentile of gene length, indicating $P < 0.006$.

PCR validation of *de novo* insertions. Seventeen *de novo* insertions (eight L1, seven *Alu* and two *SVA*) detected by RC-seq were first assayed with PCR using a standard empty site/filled site genotyping assay. Primers were positioned on either side of the insertion site so that the predicted PCR product of the empty site covered < 300 bp. Additional retrotransposon specific primers were designed and paired with the existing insertion site-specific primers if required. In cases where an insertion was detected by RC-seq at one terminus only, PCR and capillary sequencing were applied to the remaining end to resolve integration site structure. PCR reactions contained 0.125 μ l Crimson Taq (New England Biolabs), 5 \times PCR-buffer, 10pMol of each Primer, 10 mM dNTPs and 10–20 ng genomic template DNA in a total volume of 25 μ l. The following cycling conditions were used: 95 °C for 2 min, then 35 cycles of 95 °C for 30 s, 58 °C for 30 s, 68 °C for 40 s, followed by a single extension step at 68 °C for 5 min. Optimization in some cases required adjusted annealing temperatures and cycle number. PCR products of the correct size (Fig. 3a) that were obtained with the retrotransposon primer in combination with the genomic primer were TA-cloned and sequenced. The same method was applied to both the 5' and the 3' ends of all *de novo* insertions to fully characterize each, apart from *SVA*-2. To PCR amplify the 5' junction of the *SVA*-2 insertion from genomic DNA, we designed three *SVA*_E-specific primers and three oligonucleotides binding 50–300 bp upstream of the *SVA*-2 integration site. To facilitate the detection of a potentially 5'-truncated *SVA*, the *SVA*-specific primers were placed within the sequenced 123 bp of the *SVA*-2 3' end (Supplementary Fig. 9), at the junctions of the *SVA*_E-specific *Alu*-like and VNTR region, and the (CCCTCT)_n repeat and *Alu*-like region, respectively. Combinatorial use of these genome-SVA primer pairs did either not result in a PCR product or generated non-specific products. For a complete list of used primers see Supplementary Table 3. Eleven *de novo* insertions (seven L1, three *Alu* and one *SVA*) were confirmed by PCR as *de novo*. Six additional insertions were determined as germline insertions, already present in the parental cell line or an early hESC passage. Control genotyping PCR of the single-copy gene GAPDH in genomic DNA preparations of parental and hiPSC lines used for RC-seq and PCR validations of *de novo* insertions is presented in Supplementary Fig. 15. PCR amplification was performed using primers GAPDH- α (5'-CAAAGCTTGTGC CCAGACTGTG3') and GAPDH- β (5'-GAGAGCTGGGGAAATGGGACT3') which bind in exon 8 (chr12:6646561–6646580) and intron 7 (chr12:6647005–6647026), respectively, resulting in a 466-bp DNA fragment. Cycling conditions were identical to those described above.

Quantification of L1-dn13 and L1-dn14 copy numbers by qPCR. To determine relative copy numbers of *de novo* insertions L1-dn13 and L1-dn14 within the

hiPS-SB4 culture, we applied real-time qPCR using TaqMan fluorogenic probes. To this end, genomic DNA was isolated using 1 ml DNAzol Genomic DNA Isolation Reagent (MRC Inc, Cincinnati, OH, USA) from 1×10^6 cells, according to the manufacturer's instructions. A total of 100 ng of genomic DNA was used for quantitative real-time PCR (qPCR). Primer and probe combinations specific to the genomic 5' junctions of the *de novo* insertions L1-dn13 and L1-dn14 (Fig. 3b) were used to quantify the copy number of the respective insertion in hiPSC cultivars. Each probe was labelled with flourochrom6-carboxyfluorescein and a non-fluorescent quencher. For normalization the single-copy gene *RPP25* (Ribonuclease P/MRP 25kDa subunit; FAM/non-fluorescent quencher, primer limited, HS00706565_S1; Applied Biosystems) was used. Cycling conditions were: 95 °C for 15 min (one cycle), 95 °C for 15 s and 60 °C for 1 min (40 cycles). For analysis of real-time and end point fluorescence, the software SDS version 2.3 as well as RQ manager 1.2 (Applied Biosystems) were used.

Isolation of hiPS-SB4 single-cell subclones. To isolate single cell subclones from the hiPS-SB4 culture by limiting dilution, hiPS-SB4 cells of passage 64 representing a mixed population of cells with and without the L1-dn13 *de novo* retrotransposition event, were magnetically separated from feeder cells by applying a Feeder Removal Kit (Miltenyi Biotech GmbH, Bergisch Gladbach, Germany) according to the manufacturer's instructions. hiPSCs were counted and seeded on feeder-coated 96-well plates (Catalogue no.: 167008, Thermo Fisher/Nunc, Roskilde, Denmark) at a cell density of one cell per well or 0.3 cells per well. hiPSCs were grown for 24 h in the presence of 10 μ M ROCK inhibitor (Y-27632, Sigma-Aldrich). Subsequently, cells were cultivated until they formed a single colony per well. Single colonies were transferred to feeder-coated 12-well plates (Thermo Fisher/Nunc) and further expanded. To isolate genomic DNA from each clone, cells were harvested after collagenase IV treatment, centrifuged, washed and pelleted again. Genomic DNA was isolated as described in the previous paragraph. Genotyping PCR conditions applied to screen for the presence of the L1-dn13 insertion and to demonstrate its presence/absence (Fig. 5d) are identical to those described above for insertion PCR validation. Primers used to demonstrate presence/absence of L1-dn13 are provided in Supplementary Data 1 and Supplementary Table 3. PCR products were visualized on a 1.5% agarose gel after ethidium bromide staining.

L1 retrotransposition reporter assays. *De novo* full-length L1 insertions were amplified from genomic DNA using an Expand Long Template PCR system (Roche) and primers located 50 bp upstream/downstream the insertion site (available upon request). For each PCR we used: 0.3 μ l Expand Long Template Taq (Roche), $1 \times$ buffer#1, 400 μ M dNTPs, 1 μ M each Primer and 300 ng genomic DNA in 50 μ l per tube. Cycling conditions were: 95 °C for 5 min, then 30 cycles of 95 °C for 1 min, 56 °C for 30 s, 68 °C for 6 min, followed by a single extension step at 68 °C for 10 min. To avoid the generation of mutations that may lead to retrotransposition defective elements, we conducted at least four independent PCRs per L1. PCR products were resolved on 0.9% agarose gels, and fragments of the expected length of ~6 kb representing potential full-length L1 elements were excised and purified using a Qiaquick kit (Qiagen) and cloned in the Topo-XL plasmid (Invitrogen). Each of the cloned PCR products carrying full-length L1 elements L1-dn4, L1-dn6 and L1-dn14 were sequenced (Supplementary Fig. 10). To evaluate retrotransposition competence of the L1-dn6 *de novo* insertion, two independent genomic PCR amplicons, L1-dn6-5.4 and L1-dn6-2.2, were sequenced and inserted into the pJJ101/L1.3 backbone after the deletion of its L1.3 sequence by *Not I/BstZ171* restriction^{9,72}. pJJ101/L1.3 contains the active full-length L1.3 element tagged with an *mblastI* retrotransposition indicator cassette⁷² cloned in vector pCEP4 (Invitrogen). In total, we generated five JJ101-derived plasmids containing an L1-dn6 element amplified from genomic DNA by PCR. For retrotransposition assays, these L1 reporter plasmids were purified using a Qiagen Midiprep system (Qiagen) and only highly supercoiled preparations were used in the following assays.

Retrotransposition assays in HeLa cells were conducted as described previously^{9,46,52,72}. HeLa cells were purchased from ATCC. Cytogenetic authentication of HeLa cells was performed by spectral karyotyping (SKY)-FISH. HeLa cells used in this study were tested for mycoplasma contamination monthly. Briefly, HeLa cells were cultured using DMEM-high glucose (4.5 g l⁻¹) supplemented with L-glutamine, Penicillin/Streptomycin, and 10% fetal bovine serum (all reagents from GIBCO-Invitrogen) and passaged using Trypsin 0.05% (GIBCO-Invitrogen). 10⁴ HeLa cells per well were plated in triplicate using six-well tissue culture plates. After 18 h, cells were transfected with 1 μ g per well of plasmid using 3 μ l of Fugene6 (Promega) following manufacturer's instructions. Next day, medium was replaced and cells cultured for five additional days. Six days after transfection, Blastidicin-S (Invitrogen) was added to a final concentration of 10 μ g ml⁻¹ and cells were cultured for seven days in the presence of the antibiotic. Next, plates were fixed and stained with crystal violet, and foci counted manually.

Statistical analyses of relative L1 RNA levels. The statistical evaluation of relative L1 mRNA levels determined by qRT-PCR was performed by ANOVA, using Bonferroni correction for multiple comparisons with the same control group.

Reduction in full-length transcript levels in the embryoid body time kinetics experiment was evaluated by means of Linear Regression for data from day 0 to day 8 ($R^2 = 0.79$). Analyses were performed with SAS/STAT software, version 9.2 SAS system for Windows.

References

1. Yamanaka, S. Induced pluripotent stem cells: past, present, and future. *Cell Stem Cell* **10**, 678–684 (2012).
2. Gore, A. *et al.* Somatic coding mutations in human induced pluripotent stem cells. *Nature* **471**, 63–67 (2011).
3. Hussein, S. M. *et al.* Copy number variation and selection during reprogramming to pluripotency. *Nature* **471**, 58–62 (2011).
4. Laurent, L. C. *et al.* Dynamic changes in the copy number of pluripotency and cell proliferation genes in human ESCs and iPSCs during reprogramming and time in culture. *Cell Stem Cell* **8**, 106–118 (2011).
5. Lister, R. *et al.* Hotspots of aberrant epigenomic reprogramming in human induced pluripotent stem cells. *Nature* **471**, 68–73 (2011).
6. Mayshar, Y. *et al.* Identification and classification of chromosomal aberrations in human induced pluripotent stem cells. *Cell Stem Cell* **7**, 521–531 (2010).
7. Ben-David, U. & Benvenisty, N. The tumorigenicity of human embryonic and induced pluripotent stem cells. *Nat. Rev. Cancer* **11**, 268–277 (2011).
8. Levin, H. L. & Moran, J. V. Dynamic interactions between transposable elements and their hosts. *Nat. Rev. Genet.* **12**, 615–627 (2011).
9. Beck, C. R. *et al.* LINE-1 retrotransposition activity in human genomes. *Cell* **141**, 1159–1170 (2010).
10. Mills, R. E., Bennett, E. A., Iskow, R. C. & Devine, S. E. Which transposable elements are active in the human genome? *Trends Genet.* **23**, 183–191 (2007).
11. Brouha, B. *et al.* Hot L1s account for the bulk of retrotransposition in the human population. *Proc. Natl Acad. Sci. USA* **100**, 5280–5285 (2003).
12. Ewing, A. D. & Kazazian, Jr. H. H. Whole-genome resequencing allows detection of many rare LINE-1 insertion alleles in humans. *Genome Res.* **21**, 985–990 (2011).
13. Garcia-Perez, J. L. *et al.* LINE-1 retrotransposition in human embryonic stem cells. *Hum. Mol. Genet.* **16**, 1569–1577 (2007).
14. Kano, H. *et al.* L1 retrotransposition occurs mainly in embryogenesis and creates somatic mosaicism. *Genes Dev.* **23**, 1303–1312 (2009).
15. Han, J. S., Szak, S. T. & Boeke, J. D. Transcriptional disruption by the L1 retrotransposon and implications for mammalian transcriptomes. *Nature* **429**, 268–274 (2004).
16. Hancks, D. C. & Kazazian, Jr. H. H. Active human retrotransposons: variation and disease. *Curr. Opin. Genet. Dev.* **22**, 191–203 (2012).
17. Beck, C. R., Garcia-Perez, J. L., Badge, R. M. & Moran, J. V. LINE-1 elements in structural variation and disease. *Annu. Rev. Genomics Hum. Genet.* **12**, 187–215 (2011).
18. Bourc'his, D. & Bestor, T. H. Meiotic catastrophe and retrotransposon reactivation in male germ cells lacking Dnmt3L. *Nature* **431**, 96–99 (2004).
19. Maherali, N. *et al.* Directly reprogrammed fibroblasts show global epigenetic remodeling and widespread tissue contribution. *Cell Stem Cell* **1**, 55–70 (2007).
20. Wissing, S. *et al.* Reprogramming somatic cells into iPS cells activates LINE-1 retroelement mobility. *Hum. Mol. Genet.* **21**, 208–218 (2012).
21. Friedli, M. *et al.* Loss of transcriptional control over endogenous retroelements during reprogramming to pluripotency. *Genome Res.* **24**, 1251–1259 (2014).
22. Wissing, S., Montano, M., Garcia-Perez, J. L., Moran, J. V. & Greene, W. C. Endogenous APOBEC3B restricts LINE-1 retrotransposition in transformed cells and human embryonic stem cells. *J. Biol. Chem.* **286**, 36427–36437 (2011).
23. Cheng, L. *et al.* Low incidence of DNA sequence variation in human induced pluripotent stem cells generated by nonintegrating plasmid expression. *Cell Stem Cell* **10**, 337–344 (2012).
24. Quinlan, A. R. *et al.* Genome sequencing of mouse induced pluripotent stem cells reveals retroelement stability and infrequent DNA rearrangement during reprogramming. *Cell Stem Cell* **9**, 366–373 (2011).
25. Briggs, J. A. *et al.* Integration-free induced pluripotent stem cells model genetic and neural developmental features of down syndrome etiology. *Stem Cells* **31**, 467–478 (2013).
26. Grabundzija, I. *et al.* Sleeping Beauty transposon-based system for cellular reprogramming and targeted gene insertion in induced pluripotent stem cells. *Nucleic Acids Res.* **41**, 1829–1847 (2013).
27. Haase, A. *et al.* Generation of induced pluripotent stem cells from human cord blood. *Cell Stem Cell* **5**, 434–441 (2009).
28. Abyzov, A. *et al.* Somatic copy number mosaicism in human skin revealed by induced pluripotent stem cells. *Nature* **492**, 438–442 (2012).
29. Goodier, J. L., Zhang, L., Vetter, M. R. & Kazazian, Jr. H. H. LINE-1 ORF1 protein localizes in stress granules with other RNA-binding proteins, including components of RNA interference RNA-induced silencing complex. *Mol. Cell. Biol.* **27**, 6469–6483 (2007).

30. Doucet, A. J. *et al.* Characterization of LINE-1 ribonucleoprotein particles. *PLoS Genet.* **6**, e1001150 (2010).
31. Rodic, N. *et al.* Long interspersed element-1 protein expression is a hallmark of many human cancers. *Am. J. Pathol.* **184**, 1280–1286 (2014).
32. Moldovan, J. B. & Moran, J. V. The zinc-finger antiviral protein ZAP inhibits LINE and Alu retrotransposition. *PLoS Genet.* **11**, e1005121 (2015).
33. Shukla, R. *et al.* Endogenous retrotransposition activates oncogenic pathways in hepatocellular carcinoma. *Cell* **153**, 101–111 (2013).
34. Baillie, J. K. *et al.* Somatic retrotransposition alters the genetic landscape of the human brain. *Nature* **479**, 534–537 (2011).
35. Ewing, A. D. & Kazazian, Jr. H. H. High-throughput sequencing reveals extensive variation in human-specific L1 content in individual human genomes. *Genome Res.* **20**, 1262–1270 (2010).
36. Iskow, R. C. *et al.* Natural mutagenesis of human genomes by endogenous retrotransposons. *Cell* **141**, 1253–1261 (2010).
37. Wang, J. *et al.* dbRIP: a highly integrated database of retrotransposon insertion polymorphisms in humans. *Hum. Mutat.* **27**, 323–329 (2006).
38. Mir, A. A., Philippe, C. & Cristofari, G. euL1db: the European database of L1HS retrotransposon insertions in humans. *Nucleic Acids Res.* **43**, D43–D47 (2015).
39. Wang, H. *et al.* SVA elements: a hominid-specific retroposon family. *J. Mol. Biol.* **354**, 994–1007 (2005).
40. Symer, D. E. *et al.* Human L1 retrotransposition is associated with genetic instability *in vivo*. *Cell* **110**, 327–338 (2002).
41. Raiz, J. *et al.* The non-autonomous retrotransposon SVA is trans-mobilized by the human LINE-1 protein machinery. *Nucleic Acids Res.* **40**, 1666–1683 (2012).
42. Gilbert, N., Lutz, S., Morrish, T. A. & Moran, J. V. Multiple fates of L1 retrotransposition intermediates in cultured human cells. *Mol. Cell. Biol.* **25**, 7780–7795 (2005).
43. Luan, D. D., Korman, M. H., Jakubczak, J. L. & Eickbush, T. H. Reverse transcription of R2Bm RNA is primed by a nick at the chromosomal target site: a mechanism for non-LTR retrotransposition. *Cell* **72**, 595–605 (1993).
44. Cost, G. J., Feng, Q., Jacquier, A. & Boeke, J. D. Human L1 element target-primed reverse transcription *in vitro*. *EMBO J.* **21**, 5899–5910 (2002).
45. Jurka, J. Sequence patterns indicate an enzymatic involvement in integration of mammalian retroposons. *Proc. Natl Acad. Sci. USA* **94**, 1872–1877 (1997).
46. Morrish, T. A. *et al.* DNA repair mediated by endonuclease-independent LINE-1 retrotransposition. *Nat. Genet.* **31**, 159–165 (2002).
47. Zingler, N. *et al.* Analysis of 5' junctions of human LINE-1 and Alu retrotransposons suggests an alternative model for 5'-end attachment requiring microhomology-mediated end-joining. *Genome Res.* **15**, 780–789 (2005).
48. Ostertag, E. M. & Kazazian, Jr. H. H. Twin priming: a proposed mechanism for the creation of inversions in L1 retrotransposition. *Genome Res.* **11**, 2059–2065 (2001).
49. Grimaldi, G., Skowronski, J. & Singer, M. F. Defining the beginning and end of KpnI family segments. *EMBO J.* **3**, 1753–1759 (1984).
50. Lee, E. *et al.* Landscape of somatic retrotransposition in human cancers. *Science* **337**, 967–971 (2012).
51. Solyom, S. *et al.* Extensive somatic L1 retrotransposition in colorectal tumors. *Genome Res.* **22**, 2328–2338 (2012).
52. Moran, J. V. *et al.* High frequency retrotransposition in cultured mammalian cells. *Cell* **87**, 917–927 (1996).
53. Sassaman, D. M. *et al.* Many human L1 elements are capable of retrotransposition. *Nat. Genet.* **16**, 37–43 (1997).
54. Cost, G. J., Golding, A., Schlissel, M. S. & Boeke, J. D. Target DNA chromatinization modulates nicking by L1 endonuclease. *Nucleic Acids Res.* **29**, 573–577 (2001).
55. Thurman, R. E. *et al.* The accessible chromatin landscape of the human genome. *Nature* **489**, 75–82 (2012).
56. Kaer, K. & Speek, M. Retroelements in human disease. *Gene* **518**, 231–241 (2013).
57. Guenther, M. G. *et al.* Chromatin structure and gene expression programs of human embryonic and induced pluripotent stem cells. *Cell Stem Cell* **7**, 249–257 (2010).
58. Nott, A., Meislin, S. H. & Moore, M. J. A quantitative analysis of intron effects on mammalian gene expression. *RNA* **9**, 607–617 (2003).
59. Schmittgen, T. D. *et al.* Quantitative reverse transcription-polymerase chain reaction to study mRNA decay: comparison of endpoint and real-time methods. *Anal. Biochem.* **285**, 194–204 (2000).
60. Coufal, N. G. *et al.* L1 retrotransposition in human neural progenitor cells. *Nature* **460**, 1127–1131 (2009).
61. Arokium, H. *et al.* Deep sequencing reveals low incidence of endogenous LINE-1 retrotransposition in human induced pluripotent stem cells. *PLoS ONE* **9**, e108682 (2014).
62. Upton, K. R. *et al.* Ubiquitous L1 mosaicism in hippocampal neurons. *Cell* **161**, 228–239 (2015).
63. van den Hurk, J. A. *et al.* L1 retrotransposition can occur early in human embryonic development. *Hum. Mol. Genet.* **16**, 1587–1592 (2007).
64. Marchetto, M. C. *et al.* Differential L1 regulation in pluripotent stem cells of humans and apes. *Nature* **503**, 525–529 (2013).
65. Ostertag, E. M. & Kazazian, Jr. H. H. Biology of mammalian L1 retrotransposons. *Annu. Rev. Genet.* **35**, 501–538 (2001).
66. Coufal, N. G. *et al.* Ataxia telangiectasia mutated (ATM) modulates long interspersed element-1 (L1) retrotransposition in human neural stem cells. *Proc. Natl Acad. Sci. USA* **108**, 20382–20387 (2011).
67. Kapranov, P. *et al.* RNA maps reveal new RNA classes and a possible function for pervasive transcription. *Science* **316**, 1484–1488 (2007).
68. Becherer, O. J. *et al.* A new model to study neurodegeneration in ataxia oculomotor apraxia type 2. *Hum. Mol. Genet.* **24**, 5759–5774 (2015).
69. Andrews, P. W., Bronson, D. L., Benham, F., Strickland, S. & Knowles, B. B. A comparative study of eight cell lines derived from human testicular teratocarcinoma. *Int. J. Cancer* **26**, 269–280 (1980).
70. Kimberland, M. L. *et al.* Full-length human L1 insertions retain the capacity for high frequency retrotransposition in cultured cells. *Hum. Mol. Genet.* **8**, 1557–1560 (1999).
71. Watanabe, N. & Mitchison, T. J. Single-molecule speckle analysis of actin filament turnover in lamellipodia. *Science* **295**, 1083–1086 (2002).
72. Kopera, H. C., Moldovan, J. B., Morrish, T. A., Garcia-Perez, J. L. & Moran, J. V. Similarities between long interspersed element-1 (LINE-1) reverse transcriptase and telomerase. *Proc. Natl Acad. Sci. USA* **108**, 20345–20350 (2011).
73. Richards, M., Fong, C. Y., Chan, W. K., Wong, P. C. & Bongso, A. Human feeders support prolonged undifferentiated growth of human inner cell masses and embryonic stem cells. *Nat. Biotechnol.* **20**, 933–936 (2002).
74. Thomson, J. A. *et al.* Embryonic stem cell lines derived from human blastocysts. *Science* **282**, 1145–1147 (1998).

Acknowledgements

We thank O. Weichenrieder for the generous gift of an anti-ORF1p antibody, R. Löwer and Csaba Miskey for helpful discussions, K.-M. Hanschmann for statistical analyses, as well as S. Heras and F. Sanchez-Luque for technical suggestions on RNA extraction and manipulation. This work was supported by the LOEWE Center for Cell and Gene Therapy Frankfurt (funded by the Hessian Ministry of Higher Education, Research and the Arts; funding reference number: III L 4- 518/17.004 [2010]) (to S.K. and G.G.S.), grants SCHU1014/8-1 (to G.G.S.) and MA2331/11-1 (to U.M.) from the *Deutsche Forschungsgemeinschaft*, and EU-FP6/CliniGene-NoE-Flexibility fund FLEXI7-m (to G.G.S. and Z.Iz.), EU-FP7 InduStem (grant number 230675 to Z.Iv.), Hungarian stem cell project TÁMOP-4.2.2-08/1-2008-0015 (to A.S., B.S., Z.Iz. and Z.Iv.), OTKA 83533 (B.S.), the *Bundesministerium für Bildung und Forschung* (ReGene, grant number 01GN1003A, to Z.Iv.) and REBIRTH Cluster of Excellence, EXC 62/3 (to U.M.). G.J.F. acknowledges the support of an NHMRC Career Development Fellowship (GNT1045237) and NHMRC Project Grants GNT1042449, GNT1045991, GNT1067983 and GNT1068789. J.L.G.P.'s lab is supported by CICE-FEDER-P09-CTS-4980, CICE-FEDER-P12-CTS-2256, Plan Nacional de I + D + I 2008-2011 and 2013-2016 (FIS-FEDER-PI11/01489 and FIS-FEDER-PI14/02152), PCIN-2014-115-ERA-NET NEURON II, the European Research Council (ERC-Consolidator ERC-STG-2012-233764) and by an International Early Career Scientist grant from the Howard Hughes Medical Institute (IECS-55007420). M.M.-L. was supported by PeS-FEDER-PI-0224-2011.

Author contributions

S.K., J.L.G.-P., G.J.F. and G.G.S. designed the experiments. G.G.S. coordinated the project. G.J.F. and G.G.S. wrote the manuscript. S.K., N.V.F., J.W., I.G., A.B., B.S., S.M., A.W., A.H., E.J.W., M.G.-C., C.L.-R., J.A.P., U.M. and Z.Iv. generated hiPSC lines, cultivated hiPSC and hESC lines, characterized their pluripotency and/or extracted DNA, RNA and protein from these cells. K.R.U., R.S., D.J.G. performed RC-seq experiments. G.J.F. led the bioinformatic analyses. N.V.F., K.R.U., G.J.F., M.M.L. and J.L.G.-P. validated de novo insertions by genotyping PCR. S.K., N.V.F., J.W., J.L. and Z.Iz. performed qRT-PCR and qPCR experiments. N.V.F. and M.G.-C. performed immunoblot analyses. U.H. and N.V.F. performed northern blot analyses and luciferase reporter assays. M.M.L., P.G. and J.L.G.-P. were responsible for bisulfite sequencing and L1 retrotransposition reporter assays. Each author contributed to manuscript editing.

Additional Information

Accession codes: The RC-seq FASTQ data have been deposited in the Sequence Read Archive (SRA) under accession code PRJEB3191.

Supplementary Information accompanies this paper at <http://www.nature.com/naturecommunications>

Competing financial interests: The authors declare no competing financial interests.

Reprints and permission information is available online at <http://npg.nature.com/reprintsandpermissions/>

How to cite this article: Klawitter, S. *et al.* Reprogramming triggers endogenous L1 and *Alu* retrotransposition in human induced pluripotent stem cells. *Nat. Commun.* 7:10286 doi: 10.1038/ncomms10286 (2016).



This work is licensed under a Creative Commons Attribution 4.0 International License. The images or other third party material in this article are included in the article's Creative Commons license, unless indicated otherwise in the credit line; if the material is not included under the Creative Commons license, users will need to obtain permission from the license holder to reproduce the material. To view a copy of this license, visit <http://creativecommons.org/licenses/by/4.0/>