



# THE UNIVERSITY *of* EDINBURGH

## Edinburgh Research Explorer

### **TRONCO: an R package for the inference of cancer progression models from heterogeneous genomic data**

**Citation for published version:**

De Sano, L, Caravagna, G, Ramazzotti, D, Graudenzi, A, Mauri, G, Mishra, B & Antoniotti, M 2016, 'TRONCO: an R package for the inference of cancer progression models from heterogeneous genomic data' *Bioinformatics*, vol. 32, no. 12, pp. 1911-1913. DOI: 10.1093/bioinformatics/btw035

**Digital Object Identifier (DOI):**

[10.1093/bioinformatics/btw035](https://doi.org/10.1093/bioinformatics/btw035)

**Link:**

[Link to publication record in Edinburgh Research Explorer](#)

**Document Version:**

Peer reviewed version

**Published In:**

Bioinformatics

**General rights**

Copyright for the publications made accessible via the Edinburgh Research Explorer is retained by the author(s) and / or other copyright owners and it is a condition of accessing these publications that users recognise and abide by the legal requirements associated with these rights.

**Take down policy**

The University of Edinburgh has made every reasonable effort to ensure that Edinburgh Research Explorer content complies with UK legislation. If you believe that the public display of this file breaches copyright please contact [openaccess@ed.ac.uk](mailto:openaccess@ed.ac.uk) providing details, and we will remove access to the work immediately and investigate your claim.



# TRONCO: an R package for the inference of cancer progression models from heterogeneous genomic data

Luca De Sano<sup>\*,1</sup>, Giulio Caravagna<sup>\*,1,2</sup>, Daniele Ramazzotti<sup>\*,1</sup>, Alex Graudenzi<sup>1,3</sup>, Giancarlo Mauri<sup>1</sup>, Bud Mishra<sup>4</sup>, and Marco Antoniotti<sup>1,5</sup>

<sup>1</sup>Department of Informatics, Systems and Communication, University of Milano-Bicocca, Milan, Italy.

<sup>2</sup>School of Informatics, University of Edinburgh, Edinburgh, UK.

<sup>3</sup>Institute of Molecular Bioimaging and Physiology of the Italian National Research Council (IBFM-CNR), Milan, Italy.

<sup>4</sup>Courant Institute of Mathematical Sciences, New York University, New York, USA.

<sup>5</sup>Milan Center for Neuroscience, University of Milan-Bicocca, Italy.

## Abstract

**Motivation:** We introduce TRONCO (TRanslational ONCOlogy), an open-source R package that implements the state-of-the-art algorithms for the inference of cancer progression models from (epi)genomic mutational profiles. TRONCO can be used to extract population-level models describing the trends of accumulation of alterations in a cohort of cross-sectional samples, e.g., retrieved from publicly available databases, and individual-level models that reveal the clonal evolutionary history in single cancer patients, when multiple samples, e.g., multiple biopsies or single-cell sequencing data, are available. The resulting models can provide key hints in uncovering the evolutionary trajectories of cancer, especially for precision medicine or personalized therapy.

**Availability:** TRONCO is released under the GPL license, it is hosted in the Software section at <http://bimib.disco.unimib.it/> and archived also at [bioconductor.org](http://bioconductor.org).

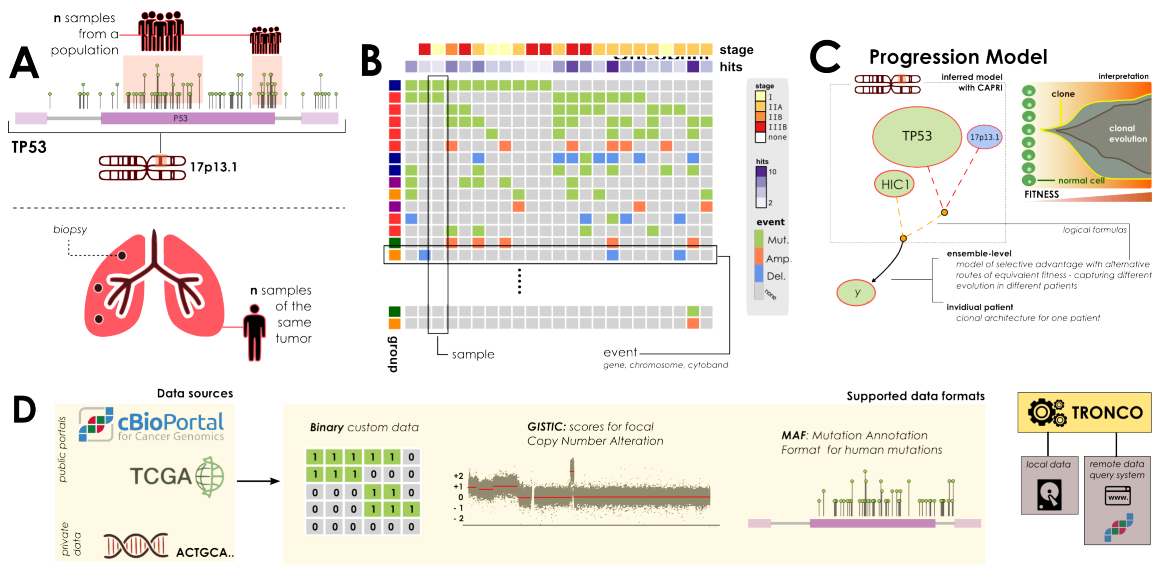
**Contact:** [tronco@disco.unimib.it](mailto:tronco@disco.unimib.it)

## 1 Introduction

Cancer develops through the successive expansions of clones, in which certain (epi)genomic alterations, called *drivers*, confer a *fitness* advantage and progressively accumulate, in a context of overall scarcity of resources [6]. Specifically, in Nowell's seminal work, tumor evolution is described in terms of stepwise genetic variation such that growth advantage is the key for the survival and pro-rogation of the clones. Therefore, one can define *cancer progression models*, in terms of *probabilistic*

---

\*Equal contributors



*causal graphical models*, where the conditional dependencies and the temporal ordering among these alterations are described, revealing the evolutionary trajectories of cancer at the (epi)genome level.

We further distinguish [3]. (i) *ensemble-level* progression models, describing the statistical trends of accumulation of genomic alterations in a cohort of distinct cancer patients. Such models describe the temporal partial orders of fixation and accumulation of such alterations and represent population-level trends; and (ii) *individual-level* models, thus accounting for the specific evolutionary history of cancer clones in individual tumors. Such models thus impute the ancestry relations of the observed clones.

Even if the inference of such models is further complicated by a series of theoretical and technical hurdles, such as, e.g., *intra-* and *inter-tumor heterogeneity* and the effective detection of drivers, it can benefit from the increasing amount of *next-generation sequencing* (NGS) data, currently available through public projects such as The Cancer Genome Atlas (TCGA, <https://tcga-data.nci.nih.gov>). Usually, such databases provide *cross-sectional* (epi)genomic profiles retrieved from single biopsies of cancer patients, which can be used to extract ensemble-level models; but higher resolution data such as *multiple-biopsies*, or even *single-cell* sequencing data are becoming more accessible and reliable, which can be used to infer individual-level models.

Here we introduce TRONCO (TRanslational ONCOlogy), an R package built to infer cancer progression models from heterogeneous genomic data (in the form of alterations persistently present along tumor evolution.) Currently, TRONCO provides the implementation of two algorithms: (i) CAPRESE (CAncer PRogression Extraction with Single Edges [7]), and (ii) CAPRI (CAncer PRogression Inference [8]), both based on Suppes’ theory of *probabilistic causation* [9], but with distinct goals and properties (see Software Implementation).

TRONCO, in its current form and perspective, should be thought of as a tool that provides the implementation of up-to-date solutions to the progression inference problem. At the time of the writing it can be effectively used as the final stage of a modular pipeline for the extraction of ensemble-level cancer progression models from cross-sectional data [3]. In such a pipeline input data are pre-processed to (i) stratify samples in tumor subtypes, (ii) select driver alterations and (iii) identify groups of fitness-equivalent (i.e., mutually exclusive) alterations, prior to the application of the CAPRI algorithm. The resulting ensemble-level progression models depict the evolutionary dynamics of cancer, with translational impacts on diagnostic and therapeutic processes, especially in regard to precision medicine and personalized drug development.

From the complementary perspective, TRONCO can also exploit the CAPRESE algorithm to infer the clonal evolutionary history in single patients when multiple samples are available, as in the case of multiple biopsies and/or single-cell sequencing data, as long as the set of driver events is selected; see [3].

## 2 Software Implementation

TRONCO implements a set of R functions to aid the user to extract a cancer progression model from genomic data. At a high-level, these function shall help to import, visualize and manipulate genomic profiles – regardless of their source – eventually allowing the implemented algorithms to run and assess the confidence in a model.

The basics steps of TRONCO’s usage are shown in Figure 1. In panel (a) we show multiple input alterations (e.g., somatic mutations or copy number alterations) either from a cohort of patients, or a unique patient (e.g., multi-region or single-cell sequencing); in panel (b) we show an oncoprint visualization from the tool, i.e., a matrix whose columns represent samples and rows the alterations

and their presence per sample; panel (c) shows an inferred graphical Bayesian progression model obtained with one of the available algorithms; finally, in panel (d) we show data supported for processing in the tool. For a more detailed explanation of the implementation of the package see [1].

**Data loading and manipulation.** Common formats to store data used to extract progression models can be natively imported. These include, for instance, the *Mutation Annotation Format* (MAF) for somatic mutations, as well as the *Genomic Identification of Significant Targets in Cancer* (GISTIC) format to store focal Copy Number Variations. The tool can exploit the cBio portal for Cancer Genomics, which collects among others TCGA projects, to access freely available instances of such data [4].

TRONCO provides functions for data preprocessing to, e.g., select a certain subset of alterations, or samples or any abstraction which might be appropriate according to the cancer being studied.

**Visualization and interaction with other tools.** TRONCO implements an *oncoprint* system to visualize the processed data. Datasets can be exported for processing by other tools used to, e.g., stratify input samples and detect groups of mutually exclusive alterations, which include the *Network Based Stratification* [5] and *MUTEX* [2] tools. TRONCO allows the visualization of the inferred models.

**Model inference and confidence.** TRONCO provides two algorithms: (i) CAPRESE, which uses a *shrinkage*-like estimator to infer *tree*-models of progression, and (ii) CAPRI, which extracts more general *direct acyclic graphs (DAG)* - thus allowing for confluent evolution and complex hypothesis testing - by combining *bootstrap* and *maximum likelihood estimation*. CAPRESE and CAPRI both rely on the same theory of *probabilistic causation*, but with distinct goals and properties. The former reconstructs tree models of progressions, while the latter general directed acyclic graphs. Both methods are agnostic to the type of input data (i.e., whether its an ensemble or an individual tumor), but shall be used in different contexts as they produce different types of models. Indeed, CAPRESE is better at extracting cancer evolution in a single individual as in that case trees capture branched evolution and trunk events, which shall suffice to describe clonal evolution. Instead, when heterogeneity might result in multiple evolutionary routes with common downstream alterations, the underlying true model is a graph, and CAPRI should be the tool of choice.

Whatever a model is, TRONCO implements a set of functions to assess its confidence via (i) non-parametric, (ii) parametric and (iii) statistical bootstrap.

### 3 Discussion

TRONCO provides up-to-date, theoretically well-founded, statistical methods to understand the evolution of a cancer (ensemble-level) or a single tumor (individual-level). The implemented algorithms are demonstrably the state-of-the-art for the progression inference problem, in terms of computational cost, scalability with respect to sample size, accuracy and robustness against noise in the data. The implementation makes straightforward the interaction of TRONCO with other common bioinformatics tools, possibly allowing the creation of a common suite of tools for cancer progression inference.

Finally, we refer to [3] or the Supplementary materials for a demonstration of the usage of TRONCO on real genomics data both at the ensemble-level and individual-level progression models. In particular, this paper outlines the capability of the methods to reproduce much of the current knowledge on the progression for a set of cancer types, as well as to suggest clinically relevant insights. Furthermore, we also provide users with detailed manuals, vignettes, and source code to replicate all the analysis presented in the paper plus others (case studies: colorectal cancer, clear cell renal cell carcinoma and acute chronic myeloid leukaemia) in the Supplementary Materials and at the TRONCO official webpage (Software section at <http://bimib.disco.unimib.it/>).

**Financial support.** MA, GM, GC, AG, DR acknowledge Regione Lombardia (Italy) for the research projects RetroNet through the ASTIL Program [12-4-5148000-40]; U.A 053 and Network Enabled Drug Design project [ID14546A Rif SAL-7], Fondo Accordi Istituzionali 2009. BM acknowledges founding by the NSF grants CCF-0836649, CCF-0926166 and a NCI-PSOC grant.

## References

- [1] Marco Antoniotti, Giulio Caravagna, Luca De Sano, Alex Graudenzi, Giancarlo Mauri, Bud Mishra, and Daniele Ramazzotti. Design of the tronco bioconductor package for translational oncology. *Submitted. Available on bioRxiv.org, ID 027524.*, 2015.
- [2] Özgün Babur, Mithat Gönen, Bülent Arman Aksoy, Nikolaus Schultz, Giovanni Ciriello, Chris Sander, and Emek Demir. Systematic identification of cancer driving signaling pathways based on mutual exclusivity of genomic alterations. *Genome Biology*, 16(1), 2015.
- [3] G. Caravagna, A. Gradenzi, D. Ramazzotti, R. Sanz-Pamplona, G. Mauri, V. Moreno, M. Antoniotti, and B. Mishra. Algorithmic methods to infer the evolutionary trajectories in cancer progression. *Submitted. Available on bioRxiv.org, ID 027359.*, 2015.
- [4] Ethan Cerami, Jianjiong Gao, Ugur Dogrusoz, Benjamin E Gross, Selcuk Onur Sumer, Bülent Arman Aksoy, Anders Jacobsen, Caitlin J Byrne, Michael L Heuer, Erik Larsson, et al. The cbio cancer genomics portal: an open platform for exploring multidimensional cancer genomics data. *Cancer discovery*, 2(5):401–404, 2012.
- [5] Matan Hofree, John P Shen, Hannah Carter, Andrew Gross, and Trey Ideker. Network-based stratification of tumor mutations. *Nature Methods*, 10(11):1108–1115, 2013.
- [6] Peter C Nowell. The clonal evolution of tumor cell populations. *Science*, 194(4260):23–28, 1976.
- [7] Loes Olde Loohuis, Giulio Caravagna, Alex Graudenzi, Daniele Ramazzotti, Giancarlo Mauri, Marco Antoniotti, and Bud Mishra. Inferring tree causal models of cancer progression with probability raising. *PLOS ONE*, 9(12):e115570, 2014.
- [8] Daniele Ramazzotti, Giulio Caravagna, Loes Olde Loohuis, Alex Graudenzi, Ilya Korsunsky, Giancarlo Mauri, Marco Antoniotti, and Bud Mishra. Capri: efficient inference of cancer progression models from cross-sectional data. *Bioinformatics*, 31(18):3016–3026, 2015.
- [9] Patrick Suppes. *A Probabilistic Theory of Causality*. North-Holland Publishing Company Amsterdam, 1970.

# TRONCO: an R package for the inference of cancer progression models from heterogeneous genomic data

*Supplementary Information*

Luca De Sano    Giulio Caravagna    Daniele Ramazzotti  
Alex Graudenzi    Giancarlo Mauri    Bud Mishra  
Marco Antoniotti

## Contents

<b>1</b>	<b>Installation</b>	<b>1</b>
<b>2</b>	<b>Examples</b>	<b>1</b>
2.1	Fetching data from the cBio portal . . . . .	2
2.2	Clonal architecture of Clear Cell Renal Cell Carcinoma (CCRCC) . . . . .	7
2.3	Atypical Chronic Myeloid Leukemia (aCML) . . . . .	14

## 1 Installation

TRONCO's current stable release is version 2.0 (Mantish Shrimp, August 2015).

This can be installed from our GitHub account by typing within R the following commands:

```
> library(devtools)
> install_github("BIMIB-DISCO/TRONCO")
```

Mantis Shrimp is also in Bioconductor 3.2 since 14 October 2015.

## 2 Examples

TRONCO official webpage (<http://bimib.disco.unimib.it/>) hosts detail commentary and source code to replicate the following studies:

1. Atypical Chronic Myeloid Leukemia (aCML) - ensemble level;

2. Colorectal Cancer (CRC) - ensemble level;
3. Clear Cell Renal Cell Carcinoma (CCRCC) - individual level;
4. Single-cell synthetic data test for reconstruction's performance;
5. Processing data from the cBio portal (next section)

In the next subsections we present a few examples of usage of the tool.

## 2.1 Fetching data from the cBio portal

We show how to download *lung cancer data* of somatic mutations reported in **Figure 1(a)** of the paper

Comprehensive molecular profiling of lung adenocarcinoma. *The TCGA Consortium*. Nature 511, 543-550, 2014.

from the archives available at cBio portal under url

`http://www.cbioportal.org/study.do?cancer_study_id=luad_tcga_pub`

The code that we show is tested under R's most recent version.

**Fetching data.** First, define the pool of genes for which one wishes to download data. In this case we have a list of 18 genes from the reference figure.

```
> genes = c('TP53', 'KRAS', 'KEAP11', 'STK11', 'EGFR', 'NF1',
>           'BRAF', 'SETD2', 'RBM10', 'MGA', 'MET', 'ARID1A', 'PIK3CA',
>           'SMARCA4', 'RB1', 'CDKN2A', 'U2AF1', 'RIT1')
```

Data in cBio portal are identified by the following triple:

- a study ID - a high-level references of the study, here `luad_tcga_pub`;
- a dataset ID - a set of samples which are part of the study, in our case `luad_tcga_pub_cnaseq`;
- a genetic profile ID - a type of data available for those samples, here `luad_tcga_pub_mutations`.

With these references, one can extract data from the portal. If these are not known in advance, one can run TRONCO's function `cbio.query` which wraps the CGDS-R package - the official query system for the portal, in R.

This function will help you by showing the available data at the portal:

```
> data = cbio.query(genes=genes)

*** CGDS plugin for cBio portal query.
Available studies at cBio portal.
```



```

      cancer_study_id  name
[ ... ]
45  luad_broad        Lung Adenocarcinoma (Broad, Cell 2012)
46  luad_tcga_pub    Lung Adenocarcinoma (TCGA, Nature 2014)
47  luad_tcga        Lung Adenocarcinoma (TCGA, Provisional)
[ ... ]

```

> Enter cBio study id: luad\_tcga\_pub

Here from a list of IDs archived at the portal, and we have selected the one which references the data used in the manuscript. Notice that the user can also access provisional TCGA data or datasets from other studies such as those carried out at the Broad Institute of MIT and Harvard.

The function `cbio.query` will then load dataset information and will allow the user to select the set of desired samples, in this case we select all tumor samples that have CNA and sequencing data.

> Cancer codename: luad\_tcga\_pub

```

Cancer Ref.: Lung Adenocarcinoma (TCGA, Nature 2014)
Cancer Syn.: TCGA Lung Adenocarcinoma, containing 230 samples;
Available datasets for study: luad_tcga_pub

```

```

      case_list_id          case_list_description
1  luad_tcga_pub_3way_complete  All tumor samples that have
                                mRNA, CNA and sequencing data
                                (230 samples)
[ ... ]
22 luad_tcga_pub_cnaseq        All tumor samples that have CNA
                                and sequencing data
                                (230 samples)

```

> Enter study dataset id: luad\_tcga\_pub\_cnaseq

Which opens a view over the available genetic profiles for the selected 230 samples.

```

Data codename: luad_tcga_pub_cnaseq
Data Ref.: Tumors with sequencing and CNA data
Data Syn.: All tumor samples that have CNA and sequencing data
            (230 samples)
Available genetic profiles for selected datasets.

```

```

      genetic_profile_id      genetic_profile_description
1  luad_tcga_pub_rna_seq_v2  mRNA z-Scores ...
                                mrna_median_Zscores
[ ... ]
4  luad_tcga_pub_gistic      Putative copy-number calls on

```

```

[ ... ]
230 cases GISTIC 2.0.
6   luad_tcga_pub_methylation_hm27 Methylation (HM27) beta-val ...
8   luad_tcga_pub_mutations          Mutation data from WES.
[ ... ]
11  luad_tcga_pub_mrna                Expression levels for 17235 ...

```

```
> Enter genetic profile id: luad_tcga_pub_mutations
```

If we wish to select other type of data for these samples we just re-run this script and select, e.g., mRNA z-Scores, expression values or Methylation beta-values.

```

Samples codename: luad_tcga_pub_mutations
Data Ref.: Mutations
Data Syn.: Mutation data from whole exome sequencing.

```

```

Querying the following list of genes: TP53, KRAS, ....., RIT1
Symbol "." was replaced with "-" in sample IDs.

```

```

Data retrieved: 230 samples, 17 genes.
Retrieved also clinical data for samples: luad_tcga_pub_cnaseq
Data exported to file: luad_tcga_pub.luad_tcga_pub_cnaseq.luad_tcga

```

In this way we collected 230 samples and 5 genes, plus the function automatically downloads clinical data for the selected samples. All these data are exported to an Rdata file named for this query

```

luad_tcga_pub.luad_tcga_pub_cnaseq.luad_tcga_pub_mutations.Rdata

```

so that further processing can happen offline.

**From data to a TRONCO object.** The returned object, here `data`, has flags to access the retrieved data. Mutation data is available through `$profile` tag, clinical data through `$clinical` tag.

```

> head(data$profile[, 1:5])
      ARID1A BRAF      CDKN2A      EGFR      KRAS
TCGA-05-4249-01  NaN  A762E  NaN      NaN  G12C
TCGA-05-4382-01  E1760* L613F  NaN      R222L,E545Q  NaN
TCGA-05-4384-01  NaN  NaN    NaN      NaN  NaN
TCGA-05-4389-01  NaN  G469V  NaN      NaN  NaN
TCGA-05-4390-01  NaN  NaN    NaN      NaN  G12V
TCGA-05-4395-01  NaN  NaN    NaN      NaN  G12V

> head(data$clinical[, 'HISTOLOGICAL_SUBTYPE', drop = F])
      HISTOLOGICAL_SUBTYPE
TCGA-55-7573-01 Lung Adenocarcinoma- Not Otherwise Specified (NOS)

```

```
TCGA-78-7150-01 Lung Adenocarcinoma- Not Otherwise Specified (NOS)
TCGA-55-7727-01 Lung Adenocarcinoma- Not Otherwise Specified (NOS)
TCGA-49-6767-01 Lung Adenocarcinoma- Not Otherwise Specified (NOS)
TCGA-49-6744-01 Lung Adenocarcinoma Mixed Subtype
TCGA-49-4488-01 Lung Adenocarcinoma- Not Otherwise Specified (NOS)
```

Basic conversion to this format to a representation which can be imported with TRONCO is straightforward, as we can go through a conversion to R's matrix, replace string values with corresponding 0s and 1s - as in this case we are not distinguishing types of mutations - , and transform the matrix in a tronco object via `import.genotypes`.

The imported dataset can be seen in the console with `show`, and visualized via `oncoprint`.

```
> m = as.matrix(data$profile)
> m[is.na(m)] = 0
> m[m == 'NaN'] = 0
> m[m != '0'] = 1
> tronco.data = import.genotypes(m, event.type = 'Mutation',
> color = 'brown3')
> tronco.data = annotate.description(tronco.data,
> "Lung cancer data from cBio portal")

> show(tronco.data, 5)
Description: Lung cancer data from cBio portal.
Dataset: n=230, m=17, |G|=17.
Events (types): Mutation.
Colors (plot): brown3.
Events (10 shown):
      G1 : Mutation ARID1A
      G2 : Mutation BRAF
      G3 : Mutation CDKN2A
      G4 : Mutation EGFR
      G5 : Mutation KRAS
Genotypes (10 shown):
      G1  G2  G3  G4  G5
TCGA-05-4249-01  0  1  0  0  1
TCGA-05-4382-01  1  1  0  1  0
TCGA-05-4384-01  0  0  0  0  0
TCGA-05-4389-01  0  1  0  0  0
TCGA-05-4390-01  0  0  0  0  1
TCGA-05-4395-01  0  0  0  0  1

> oncoprint(tronco.data)
*** Oncoprint for "Lung cancer data from cBio portal"
with attributes: stage=FALSE, hits=TRUE
```

Sorting samples ordering to enhance exclusivity patterns.  
 Setting automatic row font (exponential scaling): 10.7

The image obtained is shown in figure 1.

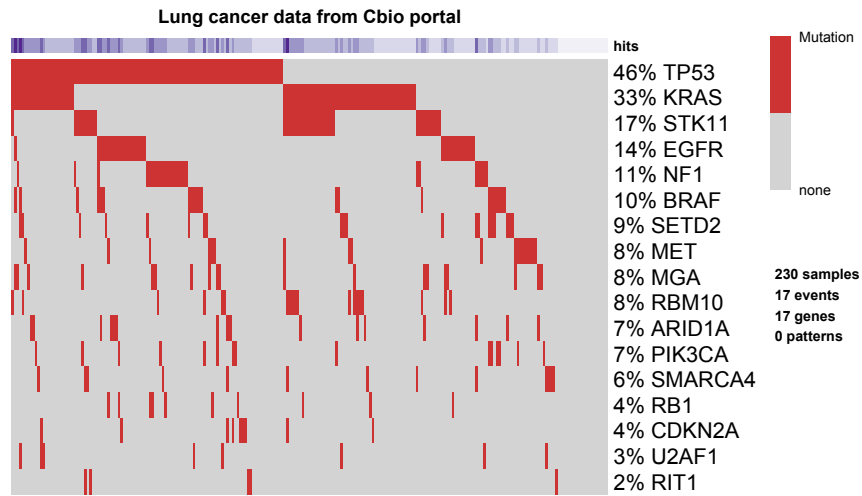


Figure 1: Oncoprint showing the genomic profiles obtained by querying cBio portal.

The reconstruction of a progression model is straightforward. For instance, to use CAPRI algorithm - with its default settings - and set a few graphical parameters to scale nodes size as of events' frequencies, scale legend which gets displayed in top corners and show p-values for the two elements which constitute the statistical evidence of selective advantage (temporal priority and probability raising) and hypergeometric test.

```
> tronco.plot(
>   tronco.capri(tronco.data),
>   scale.nodes = .6,
>   legend.cex = .6,
>   legend.pos = 'top',
>   confidence = c('tp', 'pr', 'hg'))
```

In a similar way, one might download, e.g., GISTIC data for CNAs, merge it to these mutations - via TRONCO's functions - and build a model with both data types included.

## 2.2 Clonal architecture of Clear Cell Renal Cell Carcinoma (CCRCC)

We now adopt the public data from *Gerlinger et al., Nat Gen 46, 2014* to show that the presented algorithms can be used to successfully reconstruct the clonal architecture in individual patients. We consider data coming from multi-region targeted exome-sequencing with high coverage ( $> 70x$ ), which are reported in the reference paper as figures and in the supplementary materials.

Text files of the genetic profiles provided in such supplementary resources have been given as input to TRONCO and imported with the following R function (i.e., `import.sample`).

```
# Import data - this converts the data from the CSV text file
# obtained from Excel, to a TRONCO object
import.sample = function(filename) {
  data = as.matrix(read.csv(paste0(filename), header=F))
  curr.data = NULL
  curr.data$genotypes = apply(data[c(-1,-2), -1, drop=F],
    2, as.numeric)
  rownames(curr.data$genotypes) = data[c(-1,-2),1]
  curr.data$annotations = matrix(c(data[2, -1], data[1, -1]),
    ncol=2)
  event.names = c()
  for(i in 1:nrow(curr.data$annotations)){
    event.names = c(event.names, paste0("G",i))
  }
  colnames(curr.data$genotypes) = event.names
  rownames(curr.data$annotations) = event.names
  colnames(curr.data$annotations) = c("type", "event")
  curr.data$types = matrix('', nrow=length(unique(data[2, -1])),
    ncol=1)
  colnames(curr.data$types) = "color"
  rownames(curr.data$types) = unique(data[2, -1])
  for(i in 1:nrow(curr.data$types)) {
    curr.type = rownames(curr.data$types)[i]
    index = which(types == curr.type)
    curr.data$types[i,1] = colors[index]
  }
  print(curr.data)
  return(curr.data)
}
```

As an example, we next show the R code used to import the data for one of the patients (*RMH004*) from the study.

```

> library("TRONCO")
> library(RColorBrewer)
> colors = c(brewer.pal(6, "Set2"), "firebrick4", "dodgerblue4")
> types = c("Merged", "Frame Shift", "Splice site", "SNV",
> "Stop codon", "Disrupts start codon", "Gain",
> "Loss")
> rmh004.mut = import.sample("RMH004.csv")
$genotypes
  G1 G2 G3 G4 G5 G6
R3  1  1  0  0  0  0
VT  1  0  0  1  0  0
R10 1  0  0  0  1  0
R4   1  0  1  0  1  0
R2   1  0  1  0  1  1
R8   1  0  1  0  1  0
X    0  0  0  0  0  0

$annotations
  type          event
G1 "Frame Shift" "VHL"
G2 "SNV"         "SMARCA4"
G3 "Merged"      "PBRM1(FS)/ATM(SC)"
G4 "Merged"      "PBRM1(FS)/ARID1A(SNV)"
G5 "Frame Shift" "PTEN"
G6 "Merged"      "MSH6"

$types
      color
Frame Shift "#FC8D62"
SNV         "#E78AC3"
Merged     "#66C2A5"

```

Now we load the CNAs and trim any event with no observations

```

> rmh004.CNA = import.sample("RMH004G.csv")
$genotypes
  G1 G2 G3 G4 G5 G6 G7 G8 G9 G10 G11
VT  0  0  1  0  0  0  0  0  1  0  0
R2   1  0  1  1  0  0  1  0  1  1  0
R3   0  0  1  0  0  0  0  0  1  0  0
R4   1  0  1  1  0  0  1  0  1  1  1
R8   1  1  1  1  0  1  1  0  1  1  0
R10  0  0  1  0  0  0  0  0  1  0  0
X    0  0  0  0  0  0  0  0  0  0  0

$annotations
  type          event

```

```

G1 "Gain" "1q25.1"
G2 "Gain" "2q14.3"
G3 "Gain" "5q35.3"
G4 "Gain" "7q22.3"
G5 "Gain" "8q24.21"
G6 "Gain" "12p11.21"
G7 "Gain" "20q13.33"
G8 "Loss" "1p36.11"
G9 "Loss" "3p25.3"
G10 "Merged" "4q34.3-/8p23.2-/9p21.3-/14q31.1-"
G11 "Loss" "6q22.33"

```

```

$types
      color
Gain  "firebrick4"
Loss  "dodgerblue4"
Merged "#66C2A5"

```

```
> rmh004.CNA = trim(rmh004.CNA)
```

We use the `intersect` function of TRONCO to merge mutations profile with CNAs

```

> rmh004.data = intersect.datasets(rmh004.CNA, rmh004.mut,
> intersect.genomes = F)
*** Binding events for 2 datasets.
*** Intersect dataset [ intersect.genomes = FALSE ]
      x y result
Samples 7 7      7
Genes   9 6     15

```

The obtained TRONCO object has then been further edited in order to detect and handle genes with the same mutational profiles. We have to process these data as some alterations have the same genomic profile e.g., 5q35.3 amp, VHL fs and 3p25.3 loss. We get a report of these events with the function `consolidate.data`.

```
> duplicated.events = consolidate.data(rmh004.data, T)
```

```

Indistinguishable events:
      type      event
G1  "Gain"  "1q25.1"
G4  "Gain"  "7q22.3"
G6  "Gain"  "20q13.33"
G8  "Merged" "4q34.3-/8p23.2-/9p21.3-/14q31.1-"
G12 "Merged" "PBRM1(FS)/ATM(SC)"
Total number of events for these genes: 5

```

```

Indistinguishable events:
  type  event
G2 "Gain" "2q14.3"
G5 "Gain" "12p11.21"
Total number of events for these genes: 2

```

```

Indistinguishable events:
  type  event
G3 "Gain" "5q35.3"
G7 "Loss" "3p25.3"
G10 "Frame Shift" "VHL"
Total number of events for these genes: 3

```

We use `merge.events` to merge the indistinguishable events

```

> rmh004.data = merge.events(rmh004.data,
> "G1", "G4", "G6", "G8", "G12",
> new.event = '1q 7q 20q 4q .. PBRM1fs ATMsc',
> new.type = 'Merged',
> event.color = as.colors(rmh004.data)['Merged'])

```

\*\*\* Binding events for 2 datasets.

Then we re-check the IDs of the events as data were edited in the previous step

```

> duplicated.events = consolidate.data(rmh004.data, T)

```

```

Indistinguishable events:
  type  event
G1 "Gain" "2q14.3"
G3 "Gain" "12p11.21"
Total number of events for these genes: 2

```

```

Indistinguishable events:
  type  event
G2 "Gain" "5q35.3"
G4 "Loss" "3p25.3"
G6 "Frame Shift" "VHL"
Total number of events for these genes: 3

```

```

> rmh004.data = merge.events(rmh004.data,
> "G1", "G3",
> new.event = '2q 12p',
> new.type = 'Merged',
> event.color = as.colors(rmh004.data)['Merged'])

```



```

*** Binding events for 2 datasets.

> duplicated.events = consolidate.data(rmh004.data, T)

Indistinguishable events:
  type      event
G1 "Gain"    "5q35.3"
G2 "Loss"    "3p25.3"
G4 "Frame Shift" "VHL"
Total number of events for these genes: 3

> rmh004.data = merge.events(rmh004.data,
> "G1", "G2", "G4",
> new.event = '5q 3p VHL fs',
> new.type = 'Merged',
> event.color = as.colors(rmh004.data)['Merged'])

```

```

*** Binding events for 2 datasets.

```

The data are not yet ready for the subsequent analysis

```

> consolidate.data(rmh004.data, T)

```

```

$indistinguishable
list()

```

```

$zeroes
list()

```

```

$ones
list()

```

Besides quantification of intra-tumor heterogeneity, in their work *Gerlinger et al.* found that loss of the 3p arm and alterations of the Von Hippel-Lindau tumor suppressor gene *VHL* are the only events ubiquitous among their patients.

In Figure 2 we show the clonal evolution estimated for one of those patients, *RMH004*, computed with CAPRESE (shrinkage coefficient  $\lambda = 0.5$ , time  $< 1$  sec) from the Bernoulli 0/1 profiles provided in Supplementary Table 3 and Figure 4 of the reference paper, with non-parametric bootstrap confidence (time  $< 1$  sec).

```

> rmh004.data = tronco.caprese(rmh004.data)
*** Checking input events.
*** Inferring a progression model with the following settings.
    Dataset size: n = 7, m = 8.
    Algorithm: CAPRESE with shrinkage coefficient: 0.5.

```

The reconstruction has been successfully completed in 00h:00m:00s

```
> rmh004.data = tronco.bootstrap(rmh004.data)
Executing now the bootstrap procedure, this may take a long time...
Expected completion in approx. 00h:00m:00s
```

Performed non-parametric bootstrap with 100 resampling and 0.5 as shrinkage parameter.

This model may be compared to the one inferred by processing the region-specific VAF with a max-mini optimization of most parsimonious evolutionary trees, and performing selection-by-consensus when multiple optimal solutions exist - Supplementary Figure 9 of the reference paper. CAPRESE requires no arbitrarily defined curation criteria to select the optimal tree, as it constructively searches for a solution which, in this case, is analogous in suggesting *parallel evolution of subclones* via deregulation of the *SWI/SNF* chromatin-remodeling complex – i.e., as may be noted from multiple clones with distinct *PBMR1* mutations.

Moreover, as a further proof of concept, we now consider the somatic mutations made available for two more patients, i.e., *EV002* and *EV007*, once again as Bernoulli 0/1 profiles provided in Supplementary Table 3 and Figure 4 of the main study, of which the oncprints follow in figure 3.

```
> oncprint(example1.ev002,
> title="Phylogeny inference -
> Multiple biopses of patient EV002 (Gerlinger at al.)")
*** Oncprint for "Phylogeny inference -
      Multiple biopses of patient EV002 (Gerlinger at al.)"
with attributes: stage=FALSE, hits=TRUE
Sorting samples ordering to enhance exclusivity patterns.
Setting automatic row font (exponential scaling): 13.6

> oncprint(example2.ev007,
> title="Phylogeny inference -
> Multiple biopses of patient EV007 (Gerlinger at al.)")
*** Oncprint for "Phylogeny inference -
      Multiple biopses of patient EV007 (Gerlinger at al.)"
with attributes: stage=FALSE, hits=TRUE
Sorting samples ordering to enhance exclusivity patterns.
Setting automatic row font (exponential scaling): 13.8
```

The inference on such patients is performed again with CAPRESE algorithm with shrinkage coefficient 0.5 (optimal value), and requires less than 1 second in a standard laptop; non-parametric bootstrap confidence is subsequently estimated.

We finally show the reconstructions (figure 4) of the above patients and we observe that once again CAPRESE captures the same clonal evolution depicted

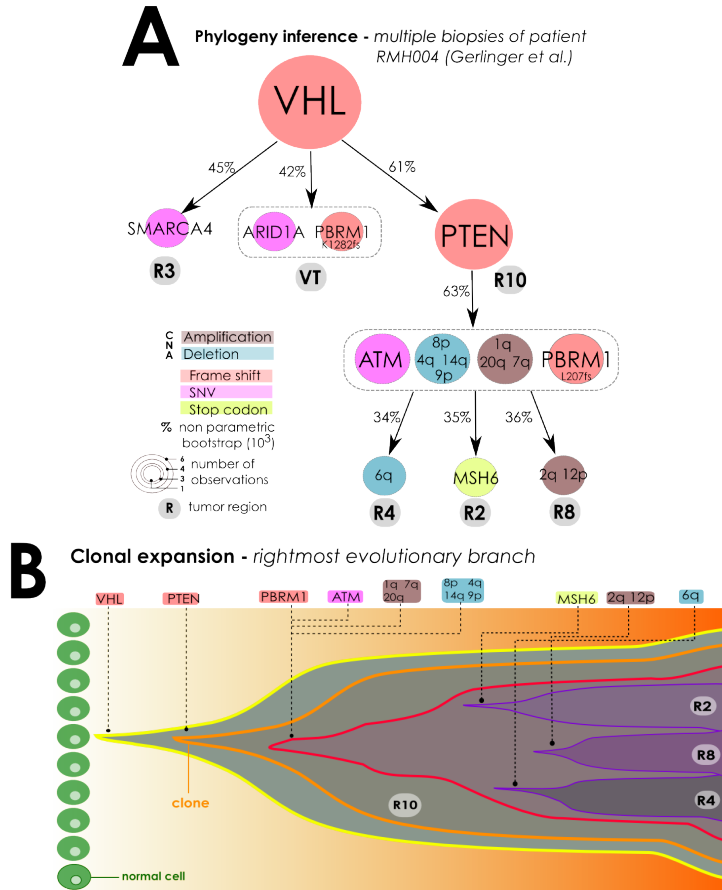


Figure 2: **(A)** With data provided by Gerlinger *et al.*, we infer a patient-specific clonal evolution from 6 biopsies of a clear cell renal carcinoma (5 primary tumor, 1 from the thrombus in the renal vein, *VT*). Validated non-synonymous mutations are selected for *VHL*, *SMARCA4*, *PTEN*, *PBRM1*, *ARID1A*, *ATM* and *MSH6* genes. CNAs are detected on 12 chromosomes. For this patient, both region-specific allele frequencies and Bernoulli profiles are provided. Thus, we can extract a clonal tree, signature and diffusion of each clone, by the unsupervised CAPRESE algorithm. **(B)** The unsupervised model inferred by CAPRESE predicts an analogous clonal expansion observed in the main paper, and extracted with most parsimonious phylogeny tree reconstruction from allelic frequencies, and hand-curated for selection of the optimal model. For simplicity, we show only expansion of the sub-clones harbouring *PTEN*'s frame shift mutation.

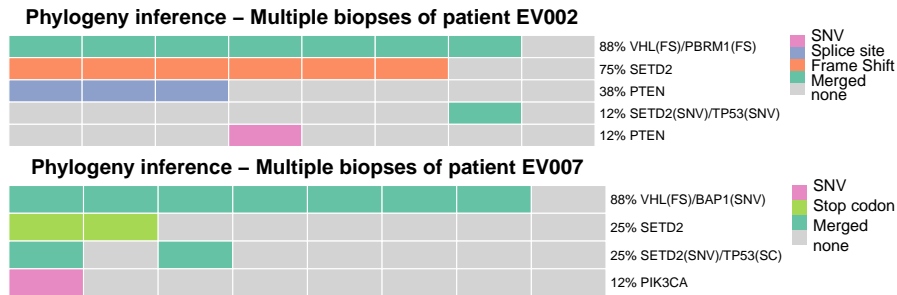


Figure 3: OncoPrint showing the genomic profiles of patients *EV002* (top) and *EV007* (bottom) from the study of *Gerlinger et al., Nat Gen 46, 2014*.

in the reference paper.

```
> tronco.plot(example1.ev002,scale.nodes=T,confidence=c("npb"),
> legend.pos="",label.edge.size=22,title="Inference by CAPRESE -
> Multiple biopses of patient EV002 (Gerlinger at al.)")
*** Expanding hypotheses syntax as graph nodes:
*** Rendering graphics
Nodes with no incoming/outgoing edges will not be displayed.
Set automatic fontsize scaling for node labels: 17.5622483502636
Adding confidence information: npb
RGraphviz object prepared.
Plotting graph and adding legends.

> tronco.plot(example2.ev007,scale.nodes=T,confidence=c("npb"),
> legend.pos="",label.edge.size=13,title="Inference by CAPRESE -
> Multiple biopses of patient EV007 (Gerlinger at al.)")
*** Expanding hypotheses syntax as graph nodes:
*** Rendering graphics
Nodes with no incoming/outgoing edges will not be displayed.
Set automatic fontsize scaling for node labels: 18.4548225555204
Adding confidence information: npb
RGraphviz object prepared.
Plotting graph and adding legends.
```

### 2.3 Atypical Chronic Myeloid Leukemia (aCML)

We now finally consider the data from *Piazza et al., Nat Gen 45, 2013* as a proof of usage of both CAPRESE and CAPRI algorithms on ensemble level data. Figure 5 shows the data used as inputs for both the two algorithms.

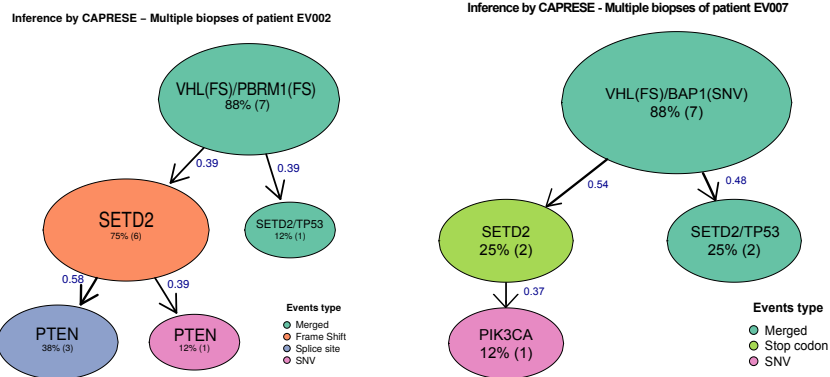


Figure 4: Reconstructions by CAPRESE for patients *EV002* (left) and *EV007* (right) from the study of *Gerlinger et al., Nat Gen 46, 2014*.

```

> require("TRONCO")
> data(aCML)
> aCML.alterations = events.selection(as.alterations(aCML),
+   filter.freq=.05, filter.in.names=c('KRAS', 'NRAS', 'IDH1',
+ 'IDH2', 'TET2', 'SF3B1', 'ASXL1'))
*** Aggregating events of type(s) {Ins/Del, Missense point, Nonsense
    Ins/Del, Nonsense point}
in a unique event with label "Alteration".
Dropping event types Ins/Del, Missense point, Nonsense Ins/Del,
    Nonsense point for 23 genes.

*** Binding events for 2 datasets.
*** Events selection: #events=23, #types=1 Filters freq|in|out =
    {TRUE, TRUE, FALSE}
Minimum event frequency: 0.05 (3 alterations out of 64 samples).

Selected 7 events.

[filter.in] Genes hold: KRAS, NRAS, IDH1, IDH2, TET2 ... [6/7 found].
Selected 10 events, returning.

> aCML.alterations = change.color(aCML.alterations,
> type="Alteration", new.color="khaki4")
> oncoprint(aCML.alterations)
*** Oncoprint for ""
with attributes: stage=FALSE, hits=TRUE
Sorting samples ordering to enhance exclusivity patterns.
Setting automatic row font (exponential scaling): 12.3

```

Moreover, we gave as a further input to CAPRI algorithm patterns of mutual exclusivity among genes: *TET2* and *IDH2*, *ASXL1* and *SF3B1*, *NRAS* and *KRAS*.

```
> aCML.alterations.hypo = hypothesis.add(aCML.alterations,
> 'TET2 xor IDH2', XOR('TET2', 'IDH2'))
> aCML.alterations.hypo = hypothesis.add(aCML.alterations.hypo,
> 'ASXL1 xor SF3B1', XOR('ASXL1', 'SF3B1'))
> aCML.alterations.hypo = hypothesis.add(aCML.alterations.hypo,
> 'NRAS xor KRAS', XOR('NRAS', 'KRAS'))
```

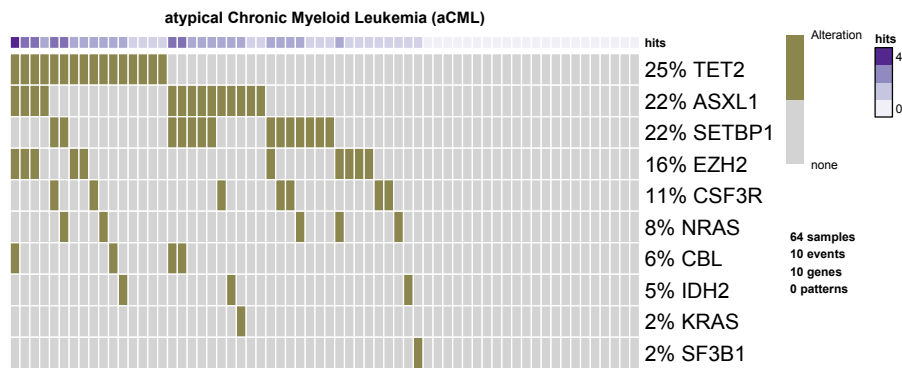


Figure 5: Oncoprint showing the genomic profiles of 64 aCML patients from the study of *Piazza et al., Nat Gen 45, 2013*.

We conclude by showing the results of the inference from both CAPRESE and CAPRI algorithms in figure 6.

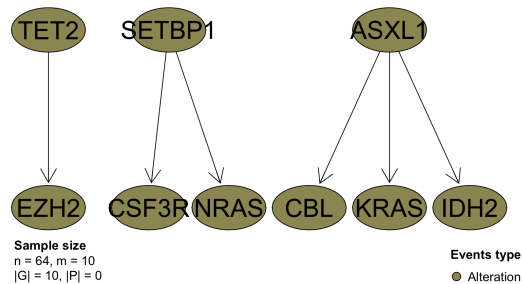
```
> caprese = tronco.caprese(aCML.alterations)
*** Checking input events.
*** Inferring a progression model with the following settings.
    Dataset size: n = 64, m = 10.
    Algorithm: CAPRESE with shrinkage coefficient: 0.5.
The reconstruction has been successfully completed in 00h:00m:00s
> capri = tronco.capri(aCML.alterations.hypo)
*** Checking input events.
*** Inferring a progression model with the following settings.
    Dataset size: n = 64, m = 13.
    Algorithm: CAPRI with "bic, aic" regularization and
        "hc" likelihood-fit strategy.
    Random seed: NULL.
    Bootstrap iterations (Wilcoxon): 100.
    exhaustive bootstrap: TRUE.
```

```

p-value: 0.05.
minimum bootstrapped scores: 3.
*** Bootstrapping selective advantage scores (prima facie).
    Evaluating "temporal priority" (Wilcoxon, p-value 0.05)
    Evaluating "probability raising" (Wilcoxon, p-value 0.05)
*** Loop detection found loops to break.
    Removed 5 edges out of 30 (17%)
*** Performing likelihood-fit with regularization bic.
*** Performing likelihood-fit with regularization aic.
The reconstruction has been successfully completed in 00h:00m:02s
There were 27 warnings (use warnings() to see them)
> tronco.plot(caprese, scale.nodes=F,
> title="aCML - Inference by CAPRESE")
*** Expanding hypotheses syntax as graph nodes:
*** Rendering graphics
Nodes with no incoming/outgoing edges will not be displayed.
Set automatic fontsize scaling for node labels: 15.2111016906551
Set automatic fontsize scaling for edge labels: 7.60555084532756
Plotting graph and adding legends.
> tronco.plot(capri, scale.nodes=F,
> title="aCML - Inference by CAPRI")
*** Expanding hypotheses syntax as graph nodes:
*** Rendering graphics
Nodes with no incoming/outgoing edges will not be displayed.
Set automatic fontsize scaling for node labels: 16.2163594037787
Set automatic fontsize scaling for edge labels: 8.10817970188937
Plotting graph and adding legends.

```

atypical Chronic Myeloid Leukemia (aCML) - Inference by CAPRESE



atypical Chronic Myeloid Leukemia (aCML) - Inference by CAPRI

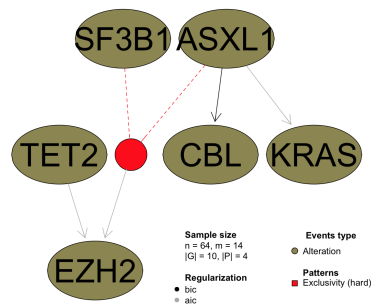


Figure 6: Inference by CAPRESE (left) and CAPRI (right) applied on the genomic profiles of 64 aCML patients from the study of *Piazza et al., Nat Gen 45, 2013*.