



THE UNIVERSITY *of* EDINBURGH

Edinburgh Research Explorer

Exosome isolation

Citation for published version:

Liga, A, Vliegenthart, ADB, Oosthuyzen, W, Dear, JW & Kersaudy-Kerhoas, M 2015, 'Exosome isolation: a microfluidic road-map' Lab on a Chip, vol. 15, no. 11, pp. 2388-94. DOI: 10.1039/c5lc00240k

Digital Object Identifier (DOI):

[10.1039/c5lc00240k](https://doi.org/10.1039/c5lc00240k)

Link:

[Link to publication record in Edinburgh Research Explorer](#)

Document Version:

Publisher's PDF, also known as Version of record

Published In:

Lab on a Chip

General rights

Copyright for the publications made accessible via the Edinburgh Research Explorer is retained by the author(s) and / or other copyright owners and it is a condition of accessing these publications that users recognise and abide by the legal requirements associated with these rights.

Take down policy

The University of Edinburgh has made every reasonable effort to ensure that Edinburgh Research Explorer content complies with UK legislation. If you believe that the public display of this file breaches copyright please contact openaccess@ed.ac.uk providing details, and we will remove access to the work immediately and investigate your claim.





Cite this: *Lab Chip*, 2015, 15, 2388

Exosome isolation: a microfluidic road-map†

A. Liga,^a A. D. B. Vliegthart,^b W. Oosthuyzen,^b J. W. Dear^b
and M. Kersaudy-Kerhoas^{*a}

Exosomes, first isolated 30 years ago, are nanoscale vesicles shed by most types of cells. The nucleic acid rich content of these nanoparticles, floating in virtually all bodily fluids, has great potential for non-invasive molecular diagnostics and may represent a novel therapeutic delivery system. However, current isolation techniques such as ultracentrifugation are not convenient and do not result in high purity isolation. This represents an interesting challenge for microfluidic technologies, from a cost-effective perspective as well as for enhanced purity capabilities, and point-of-care acquisition and diagnosis. In this frontier review, we present the current challenges, comment the first microfluidic advances in this new field and propose a roadmap for future developments. This review enables biologists and clinicians familiar with exosome enrichment to assess the performance of novel microfluidic devices and, equally, enables microfluidic engineers to educate themselves about this new class of promising biomarker-rich particles and the challenges arising from their clinical use.

Received 28th February 2015,
Accepted 28th April 2015

DOI: 10.1039/c5lc00240k

www.rsc.org/loc

1 Introduction

Extracellular vesicles (EVs) are membrane-bound structures that are released by most, if not all, cell types. Due to their “cargo” of protein, RNA and DNA from their cell of origin, EVs offer a minimally-invasive ‘window’ into the intra-cellular world.^{1,2} In the literature, differing nomenclature and classification of EVs has been used based on size, density, morphology, lipid composition, protein composition, and subcellular origin.³ Exosomes are distinguished from other EV subtypes by their unique intra-cellular biogenesis, in contrast with other EVs, such as microparticles, that are shed directly from the cell membrane.³ Exosomes are reported to measure 20–100 nm and appear cup-shaped when visualized by transmission electron microscopy. Exosomes are first formed as intraluminal vesicles by budding into early endosomes and multivesicular bodies (MVBs). Subsequently, the MVBs either fuse with lysosomes or with the plasma membrane and the endosomes are released into the extra-cellular milieu to become exosomes.⁴ Due to this specific formation process, exosomes contain a cargo that, to some extent, mirrors the cell of origin.

The observation that the proteome and transcriptome of exosomes changes according to the cell of origin^{5,6} and the

ability to access exosomes from virtually any biological fluid (including saliva, lymph, urine, milk, blood, synovial and amniotic fluids⁷) forms the rationale for the use of exosomes as non-invasive biomarkers for disease and toxicity.^{8–10}

Exosomes can also behave as inter-cellular signals by transferring functional mRNA and microRNA between cells *in vitro*.^{2,11} The importance of exosomal signalling *in vivo* remains to be determined. This signalling capacity may enable exosomes to be used as a non-immunogenic RNA delivery system that can cross natural divisions such as the blood–brain barrier.^{12,13}

2. Conventional exosome capturing

Current methods for exosome ‘capturing’ concentrate exosomes, but do not isolate them. Contamination of exosome preparations with non-exosomal proteins and other EV subtypes can lead to spurious biomarker discovery studies and incorrect conclusions about exosome biological activity.¹⁴ The isolation of a pure population of exosomes would facilitate studies in exosome biology, in particular regarding their physiological functions and their roles in various pathologies. While next-generation deep sequencing (NGS) provides fast profiling of miRNA or other biomarkers in biological fluids, including from exosomes, liquid biopsy sample preparation is sometimes crucial to reliably differentiate between diseased and healthy patients.^{15,16} In this case, the isolation of exosomes can improve the sensitivity of biomarker amplification and reduce the number of false-negative results.¹⁶ The most common method used for concentrating exosomes

^a Heriot-Watt University, Institute of Biological Chemistry, Biophysics and Bioengineering, Edinburgh, United Kingdom. E-mail: m.kersaudy-kerhoas@hw.ac.uk

^b University of Edinburgh/British Heart Foundation Centre for Cardiovascular Science, Pharmacology, Toxicology and Therapeutics, Queen’s Medical Research Institute, Edinburgh, United Kingdom

† Electronic supplementary information (ESI) available. See DOI: 10.1039/c5lc00240k



is ultracentrifugation, a method that includes differential centrifugation steps reaching speeds of up to $200\,000 \times g$. However, this procedure is time consuming (4–5 hours),¹⁷ requires specialist laboratory equipment that is not available in routine hospital laboratories, and is inefficient with regard to exosome yield (5–25% recovery).¹⁸ Variations on this method, such as adding in a sucrose gradient centrifugation step, lead to higher purity of extracted exosomes. However, the more complicated the sample processing the longer the time from sample to exosome preparation. The capital cost of an ultracentrifuge is typically around \$50–100k and the running cost is around \$3k per year. Additionally it requires training and a dedicated team. Exosomes can be isolated in as little as two hours but isolation time ranges from 2 to 10 hours depending on the biofluid and protocol. It may be difficult for standard hospital laboratories and resource-poor countries to acquire and maintain such equipment, thus denying exosome-based diagnostics to a substantial part of the population. A promising method for EV selective concentration relies on antibody-coated magnetic beads. This technique results in higher recovery and purity – at least two-fold more exosome markers and proteins measured in the exosome concentrate compared to ultracentrifugation.¹⁹ The use of magnetic beads also facilitates the use of standard analysis methods, such as flow cytometry, immuno-blot and electron microscopy on exosome-bead complexes.²⁰ However, it is important to highlight that the magnetic beads only attach to exosomes that contain the targeted protein that might not be present in all the exosomes in the sample resulting in a biased analysis. Recently, commercial precipitation kits like ExoQuick™ and Total Exosome Isolation™ precipitation solution have become available. The advantages of these kits are that they are easy to use with only 1 or 2 steps and do not require any expensive equipment or advanced technical know-how. The disadvantage is that they commonly require a lengthy overnight incubation step and their mode-of-action has not been disclosed. The purity of the acquired exosomes has been reported to be inferior compared to OptiPrep density gradient centrifugation, as demonstrated by lower enrichment of exosomal marker proteins and more contaminating proteins such as extra-cellular argonaute 2 complexes.²¹ Chemicals originating from the precipitation kit may contaminate the prep and these commonly undisclosed chemicals may affect the apparent biological activity of the exosomes. Microfiltration techniques and other size exclusion methods can suffer from clogging and vesicle trapping issues and often entail shear stress-induced damages. This paper focuses on the potential of microfluidic devices to concentrate, and even isolate, exosomes, describing the most recent technological developments and highlighting pro and cons of each of these methods that promise to deliver rapid and easy isolation. In this review we have chosen to focus on the diagnostics rather therapeutic use of exosomes, as microfluidic solutions will be most beneficial, or at least of immediate benefit, in the diagnostic area.

3. Microfluidic technologies for exosome isolation

The advent of microfluidic technologies has allowed the development of new exosome manipulation techniques which, though still at an early stage of development (most of these were developed between 2012 and 2015), are proving themselves extremely convenient in terms of reagent volumes, product purity and isolation time (*cf.* ESI† Table for detailed comparison of techniques). The techniques developed so far for microfluidic-based exosomal purification can be classified in three categories including (i) trapping exosomes with an immune-affinity approach, (ii) sieving (*e.g.* nanoporous membranes) or (iii) trapping exosomes on porous structures (*e.g.* nanowire-on-micropillars). Sieving approach differs from the others by the possibility to start from whole blood without previous treatment. However, all methods require further off-chip additional steps for sample preparation, such as plasma extraction, or reagent mixing.²²

3.1 Immunological separation

Immuno-chip. Chen *et al.* demonstrated the first immune affinity approach for the capture of exosomes within a microfluidic device.²³ The separation principle relies on receptors on the exosome outer surface which enable specific collection according to their origin and function, and allow their isolation from other shed membrane particles and lipid structures. The device features a planar structure with herringbone engravings to enhance mixing (*cf.* Fig. 1a). Collected exosomes are characterised *in situ*, after several washing steps, or lysed for DNA extraction.²³ Chen *et al.* demonstrated a faster method (~1 h), with respect to the traditional technologies, that used smaller amounts of reagents (100–400 μ l). Total RNA amount, extracted from exosomes captured on-chip using CD63 antibodies (common exosomal marker) from 400 μ L serum samples, was around 30 ng for non-small cell lung cancer patients. Further analyses demonstrated the quality and quantity of on-chip exosomal RNA was sufficient for the evaluation of tumor-derived RNA.

Immuno-chips and on-chip fluorescent characterisation. Kanwar *et al.*²² used the same principle, modifying the prior design so as to carry out “on chip” exosome quantification by a fluorescent assay method on a standard read-out plate reader. The device, called Exochip, features several circular wells connected by narrow channels, in order to enhance mixing (Fig. 1b–d). Additionally, the extended retention time leads to a stronger interaction between the exosomes and the functionalised surface. Besides being specially adapted for further analysis, the device can also be easily scaled up, simply adding more rows of wells in the same chip. The protein yield of the ExoChip exosomes was 15–18 μ g of total protein and 10–15 ng of total nucleic acid from 400 μ L serum samples. A higher level of fluorescence on the chip was measured in exosomes obtained from patients with pancreatic cancer compared to healthy volunteers. This was in line with the



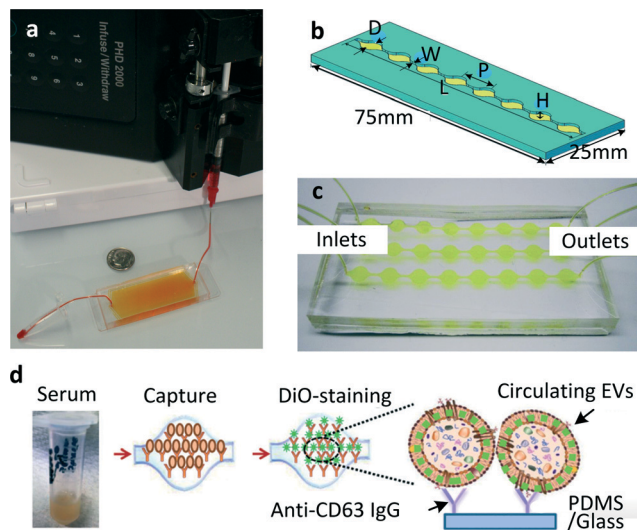


Fig. 1 (a) The first chip realised for microfluidic exosome isolation featured a $19 \text{ mm} \times 20 \mu\text{m} \times 4.5 \text{ cm}$ chamber with herringbone groves $10 \mu\text{m}$ deep to enhance contact between microparticles and chip surface. The device is pictured here is filled with supernatant fluid and attached to a syringe pump. Reproduced from ref. 23 with the permission of the Royal Society of Chemistry. (b) A modified version of the same scheme: single channel Exochip, the device has the same dimensions of a standard glass-side ($W = 0.75 \text{ mm}$, $L = 73 \text{ mm}$, $P = 9 \text{ mm}$, $H = 100 \mu\text{m}$). Up to 12 channels could fit within the dimensions of a microtiter-plate. (c) Experimental setup using a 3 channels Exochip (d) Exochip working scheme: exosomes counting is made possible through a simple 3 steps procedure involving: (i) blood serum infusion within the chip (pre-coated with exosome-specific capture antibodies, anti-CD63), (ii) staining with specifically functionalised (Di-O) fluorescent dye, (iii) on chip analysis through conventional counting methods. Reproduced from ref. 22 with the permission of the Royal Society of Chemistry.

relatively higher protein expression of CD63 and Rab5 measured in the exosomes from the cancer patients (western blot). A panel of miRNAs measured in the extracted exosomes was also able to distinguish between cancer patients and healthy volunteers. He *et al.*²⁴ developed a cascading chip where exosome isolation and enrichment, chemical lysis, protein immuno-precipitation and sandwich immunoassay assisted by chemi-fluorescence detection are integrated in a microfluidic circuit. The on-chip isolation protocol takes less than 1.5 hours and only requires $30 \mu\text{l}$ of human plasma premixed with antibody-labelled magnetic beads. The analysis of type 1 insulin growth factor receptor (IGF-1R) concentration in on-chip exosomes, though 100 times lower than that recovered from ultracentrifugation, showed a clear overexpression of the marker in 5 non-small-cell lung cancer patients compared to 6 healthy volunteers confirming the diagnostic potential of this approach. As mentioned in section 2, one of the main limitations of immunological analysis is its focus on only one particular surface protein at a time.

Immuno-chips and sensing. Several groups are proposing to use immunological techniques in combination with different techniques, allowing for better separation, or detection, or both. In this regard, Im *et al.*²⁵ devised an on-chip nano

plasmonic exosome sensor (nPLEX), in which surface plasmon resonance (SPR, a technique based on the oscillations of electrons at an interface stimulated by incident light) is used through nanohole arrays patterned on a metal film. Each array is functionalised with different affinity ligands specific for a particular surface protein, which overcomes the issue highlighted in the previous section. In the first chip generation each of 12 microfluidic channels were coupled with 3 arrays (12×3), giving the possibility to monitor and display bonds with 36 different proteins. A second generation of chips is being developed, implementing 33×33 arrays thus allowing increased data collection from 1089 sites. Thanks to the high sensitivity of the plasmonic sensors, it is possible to display in real time the intensity of exosome-site bonds, and “map” the activity of each array, thus leading to a quantitative analysis of exosome content. Exosomes were present in large quantities ($>10^9$ exosomes per mL) in ascitic fluid from 20 ovarian cancer patients and 10 non-cancer patients. Therefore the nPLEX device could function with samples simply collected through a $0.2 \mu\text{m}$ membrane filter. Receiver operator characteristic curve analysis of exosomes using paired protein levels per exosome of epithelial cell adhesion markers (EpCAM) and CD24 resulted in a promising area under the curve of 0.97. This device performs well with exosome-rich ascites samples, but due to its sensitivity and high-throughput has potential as a point-of-care diagnostic tool on more conventional liquid biopsies such as blood, if combined with an integrated sample preparation. Furthermore, its use could be broadened to diagnose a range of illnesses or even to monitor treatment response. Another example of enhanced on-chip immunological separation followed by detection was proposed by Vaydianathan *et al.* with an original approach named “nanoshearing” aimed at reducing non-specific fouling as well as providing inline detection.²⁶ The use of this electrodynamic anti-fouling technique led to a 3-fold enrichment in detection sensitivity relatively to a normal hydrodynamic flow.

Immuno-binding and inertial solution exchange. Finally, Dudani *et al.*,²⁷ used an off-chip immunological approach to bind exosomes to $20 \mu\text{m}$ polystyrene beads followed by on-chip inertial focusing to enrich the bead-exosome complex from the original sample into a buffer. The device was tested with blood samples (after RBC lysis) spiked with centrifuged melanoma and breast cancer culture supernatant. This mixture was incubated for 4 h with polystyrene beads functionalised with exosome-specific antibodies and then processed through the chip. There, inertial lift forces push the beads toward the centre of a channel with multiple outlets, transferring them into a wash buffer and allowing their selective separation. A single centrifugation step removed the larger cell debris and the exosomes can then be eluted from the beads and characterized. The device features a relatively high throughput ($70 \mu\text{l min}^{-1}$, five-fold higher than most other microfluidic techniques) and demonstrated the enrichment of exosomes but still needs a thorough molecular characterisation of the retrieved material. The 4 h needed for



bead incubation makes it unsuitable for acute care applications.

In conclusion, it is important to highlight that immunological methodologies are the only ones, so far developed, which can be directed towards the isolation of a pure exosome population. Other methods relying on physical properties (size, density, surface charge) lead to higher percentages of contaminants (similar micro-particles with different origin, proteins).

3.2 Sieving

Davies *et al.*²⁸ developed a different approach to exosome collection, by sieving EVs directly from whole blood through a membrane and driving filtration either by pressure or electrophoresis (*cf.* Fig. 2). The pressure-driven solution leads to a shorter separation time while the electric field produces a higher purity of the extracted vesicles, proteins being less affected by electric fields than phospholipidic vesicles, due to their lower negative charge.²⁹ In the authors' opinion, the non-selectivity of this device with respect to vesicle type can be seen as an advantage compared to the over-specific collection offered by immune-affinity related methods, which can lead to biased data analysis. A significant drawback is the low exosome recovery (unspecified in the text but shown to be next to 2% in a graph) while the device seems to perform well regarding separation time. The device reached a saturation point after 3–4 μL of filtrate was extracted when pressure driven filtration was used. However this volume was enough to assess the exosomal cargo by western blot and RT-PCR. When electro-driven filtration was used, the average yield was 79 ng RNA per 100 μg of protein from a 100 μL sample, compared to 187 ng of RNA per 100 μg of proteins from a 5 mL sample obtained by centrifugation.

3.3. Trapping on porous structures

Wang *et al.*⁷ devised a third approach consisting of trapping EVs through a porous microstructure. They designed a

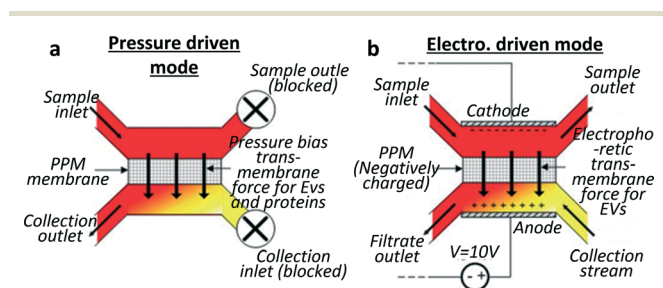


Fig. 2 Schematics for two sieving modes for exosome filtration. The membrane is realised by *in situ* photopatterning of a porous polymer monolith. Sieving can be performed by (a) applying pressure on an on-chip dead end filter or (b) by applying an electric field to drive the exosomes through the porous membrane in a hybrid solution of cross flow and electrophoresis sorting. Vesicles damage through the device was shown to be undetectable by analysing haemolysis and DNA was not contaminated by intracellular proteins. Adapted from ref. 28 with the permission of the Royal Society of Chemistry.

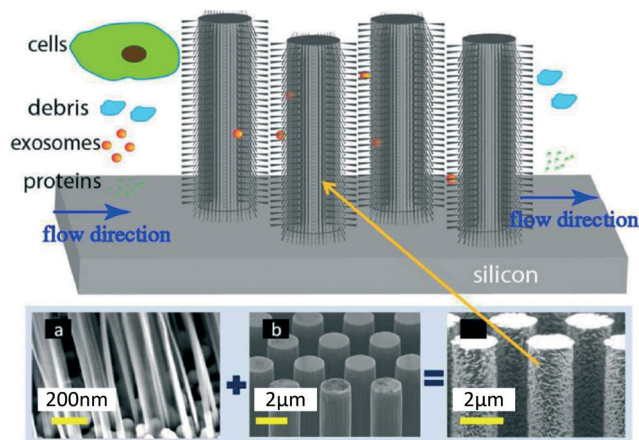


Fig. 3 Ciliated structures for exosome isolation and capture by Wang *et al.* The hierarchical geometry of the device does not allow cells larger than 1 μm to access the wired area, due to the distance between the pillars (b) being too narrow (900 nm). Smaller cell debris can enter the micropillar area but are excluded by the ciliated nano structure (a), which forms pores with diameters ranging between 30 and 200 nm, in order to selectively trap exosomes and small EVs. Smaller proteins and molecules are free to pass through the device without being captured. Reproduced from ref. 7 with the permission of the Royal Society of Chemistry.

ciliated micropillar structure forming a microporous silicon nano-wire which was able to selectively trap particles in the range of 40–100 nm (Fig. 3). According to Wang *et al.* this method allows the selective collection of intact phospholipidic “exosome-like” vesicles. Though the trapping step is relatively fast (~ 10 min), to proceed with imaging and characterisation, it is necessary to dissolve the silicon nano-wire in PBS buffer overnight, thus making the recovery procedure time consuming. This device was tested with a solution containing 83 nm and 120 nm lipid vesicles and 500 nm nanoparticles. The highest retention (60%) was obtained for 83 nm vesicles when up to 30 μL of sample was injected (based on fluorescent intensity measured with a plate reader, starting concentration undisclosed), followed by 120 nm vesicles (45%), while the retention of 500 nm bead was only 10%. The retention rate of 83 and 120 nm lipid vesicles decreased when more sample volume was injected, probably due to a saturation effect. The device was not validated with clinical samples, and no analysis of cargo protein or RNA was performed.

4. Road map for microfluidic exosomal isolation

The increased interest in the role of exosomes in biomarker discovery and diagnostics has highlighted the pressing need for new technologies to isolate exosomes in biofluids rapidly and accurately with minimal sample preparation. Here we discuss 5 areas of consideration for future developments.



4.1. From research to clinical setting: increased speed and lower cost

Ultracentrifugation is currently used in the research setting, but not yet regularly used in the clinical setting. If an exosome-based diagnostic was to be used in real-life clinical medicine, one could envisage that in a non-urgent situation, such as the diagnosis of cancer, the use of a centralised laboratory with an ultracentrifugation unit could be feasible, providing the extraction is reproducible. However if standardised performance is demonstrated using microfluidic chips, it would open the door for faster, reliable, cost-effective exosome-based diagnostics for emergencies in acute care settings (e.g., myocardial infections and drug toxicity) as well as non-emergency illnesses (cancer diagnostics). Furthermore, this could allow a more accurate exosomes analysis, since studies have indicated that there is a significant loss in exosomes number from biofluids such as urine, even when frozen at $-80\text{ }^{\circ}\text{C}$ ³⁰ and within 2 h.³¹ If exosomes are to be used for acute care, the device would ideally allow the biologist or clinician to rapidly and confidently isolate exosomes from biofluids within a 30 minute time frame after sample collection.

4.2. Future directions, technological considerations and potential challenges for the development of microfluidic technologies

All prototypes presented in this review have used a single isolation strategy and none are free from issues. Future microfluidic devices might therefore benefit from hybrid approaches using two or more isolation techniques, for example, a first separation based on size could eliminate the largest blood cells from a blood samples, followed by an immunological separation to access a specific exosome population. The challenge, as with all microfluidic development, is to provide a solution to a real clinical question. Two routes are likely to emerge: the first will explore the exosome biology in the research area, and will require refined isolation. For this route, the advantage of microfluidics will be to provide cheaper alternative to ultracentrifugation with low capital investment. The second route will focus on the development of tools to facilitate liquid biopsy preparation for next generation sequencing. The challenge will lie in the rapid extraction from complex matrices. To fit in a clinical work flow the devices will need to be more robust and cost-effective as their current counterparts. The challenges in the development will lie in (i) reducing the cost of the devices, a consideration which will need to be taken into account at the design stage, and which might involve alleviating the need for structures below $80\text{ }\mu\text{m}$, at which point photolithography might be replaceable by rapid-prototyping and high volume manufacturing processes. (ii) Secondly, achieving the right throughput will be crucial and might necessitate stacking several microfluidic units on the same device.

4.3. Achieving specificity and reproducibility

As discussed above, in some cases, devices will need to reliably provide an exosome preparation specific to an organ of origin. If a device has on-chip technologies such as protein specific markers for sorting exosomes from specific organs it allows the clinician access to a relevant exosome population specifically to his site of interest. Current methods of isolation are not delivering on reproducibility of exosome recovery, arguably due to variations in sample handling. Ideally, microfluidic chips should be tested by different laboratories to assess reproducibility and consistency and demonstrate standardised performance.

4.5. Characterisation and biological validation

At present, the methods of quantifying exact or ideal exosomal yield are still very semi-quantitative. There is an unmet need for quantitative and qualitative assessment of exosomes and the definition of clear biological controls.³² We have demonstrated that nanoparticle tracking analysis is a promising method for quantifying exosomes in biofluids, such as urine³¹ and it would therefore be interesting to compare the yield of current and future devices using this method. However, there is no “one fits all” solution for the characterisation of exosomes. The characterisation required will depend on the clinical application. Spiking-in labelled exosomes offers a reliable method to determine the yield, either *via* fluorescence measuring or RT-PCR. Furthermore, it is recommended to assess not only the presence of the selected markers (yield) but also the absence of contaminants (specificity).³²

5. Conclusion

Through highly precise fluid control and high surface to volume ratios, microfluidics has the power to differentiate, capture, enrich and isolate particles of very similar sizes and shapes. Despite being in its infancy, several microfluidic developments have demonstrated effective exosome separation, leading to robust clinical diagnostics. However none of the first prototypes are free from issues, in particular they often require prior sample preparation based on macro-scale procedures. Among the aforementioned methods, immunological separation leads to high specificity, and can be performed in a fairly short time in most cases ($\sim 1.5\text{ h}$). Trapping exosomes in porous structure, such as ciliated micro-pillars, seemingly leads to high purity exosomes recovery, but the recovery procedure is currently time consuming (over 1 day). Sieving is a particularly interesting method as it can be performed directly on whole blood, without any treatment before the separation, but it is not exempt from drawbacks, such as low recovery and the possibility of damage to vesicles due to shear stress. Some isolation techniques demonstrated for microvesicles (typically of diameter above 100 nm) might also be suitable for exosome recovery.^{33,34} For example, Rho *et al.* have demonstrated a rapid and sensitive microvesicle



detection in packed red blood cell units using filter-assisted filtration, magnetic labelling and target-specific detection *via* miniaturised nuclear magnetic resonance system.³³ Detection and characterisation are an essential part of the capture-to-diagnosis path, and some microfluidic researchers have focused all, or part, of their efforts towards the development of detection techniques which could be the subject of another focused review.^{25,35–37} Some of these techniques propose the direct (preparation free) detection of exosomal RNA from raw cell medium, which could be potentially applicable to bodily fluids.³⁷ The applications of microfluidic technology to bodily fluids for exosome isolation have not been described extensively with few devices using clinical samples, and microfluidic engineers should seek to establish strong collaboration with biologists and clinicians to demonstrate the full potential of the technology. While current ultracentrifugation techniques require significant capital and maintenance costs, microfluidic-based exosome isolation techniques are promising and cost-effective, and could be deployed in a large number of clinics and hospitals, as well as in resource-scarce settings.

Acknowledgements

AL is funded by a James Watt Scholarship. JWD acknowledges the support of NHS Research Scotland *via* NHS Lothian. MKK acknowledges the Royal Academy of Engineering for fellowship funding. The authors would like to thank the anonymous reviewers for valuable insights that enhanced the original manuscript.

Notes and references

- 1 T. Pisitkun, R. F. Shen and M. A. Knepper, *Proc. Natl. Acad. Sci. U. S. A.*, 2004, **101**(36), 13368–13373.
- 2 H. Valadi, K. Ekstrom, A. Bossios, M. Sjostrand, J. J. Lee and J. O. Lotvall, *Nat. Cell Biol.*, 2007, **9**(6), 654–659.
- 3 E. Van Der Pol, A. N. Boing, P. Harrison, A. Sturk and R. Nieuwland, *Pharmacol. Rev.*, 2012, **64**(3), 676–705.
- 4 J. Kowal, M. Tkach and C. Thery, *Curr. Opin. Cell Biol.*, 2014, **29**, 116–125.
- 5 O. G. de Jong, M. C. Verhaar, Y. Chen, P. Vader, H. Gremmels, G. Posthuma, R. M. Schiffelers, M. Gucek and B. W. van Balkom, *J. Extracell. Vesicles*, 2012, **1**, 18396–18418.
- 6 P. Kucharzewska, H. C. Christianson, J. E. Welch, K. J. Svensson, E. Fredlund, M. Ringner, M. Morgelin, E. Bourseau-Guilmain, J. Bengzon and M. Belting, *Proc. Natl. Acad. Sci. U. S. A.*, 2013, **110**(18), 7312–7317.
- 7 Z. Wang, H.-J. Wu, D. Fine, J. Schmulen, Y. Hu, B. Godin, J. X. J. Zhang and X. Liu, *Lab Chip*, 2013, **13**, 2879–2882.
- 8 J. Skog, T. Wurdinger, S. van Rijn, D. H. Meijer, L. Gainche, M. Sena-Estevés, W. T. Curry Jr, B. S. Carter, A. M. Krichevsky and X. O. Breakefield, *Nat. Cell Biol.*, 2008, **10**(12), 1470–1476.
- 9 L. Musante, D. E. Tataruch and H. Holthofer, *Front. Endocrinol.*, 2014, **5**(149), 1–12.
- 10 X. Yang, Z. Weng, D. L. Mendrick and Q. Shi, *Toxicol. Lett.*, 2014, **225**(3), 401–406.
- 11 J. Wahlgren, L. K. T. De, M. Brisslert, F. Vaziri Sani, E. Telemo, P. Sunnerhagen and H. Valadi, *Nucleic Acids Res.*, 2012, **40**(17), 130–142.
- 12 L. Alvarez-Erviti, Y. Seow, H. Yin, C. Betts, S. Lakhali and M. J. Wood, *Nat. Biotechnol.*, 2011, **29**(4), 341–345.
- 13 S. El Andaloussi, S. Lakhali, I. Mager and M. J. Wood, *Adv. Drug Delivery Rev.*, 2013, **65**(3), 391–397.
- 14 T. F. Hiemstra, P. D. Charles, T. Gracia, S. S. Hester, L. Gatto, R. Al-Lamki, R. A. Floto, Y. Su, J. N. Skepper, K. S. Lilley and F. E. Karet Frankl, *J. Am. Soc. Nephrol.*, 2014, **25**(9), 2017–2027.
- 15 L. Cheng, R. A. Sharples, B. J. Scicluna and A. F. Hill, *J. Extracell. Vesicles*, 2014, **3**, 23743–23757.
- 16 A. Gallo, M. Tandon, I. Alevizos and G. G. Illei, *PLoS One*, 2012, **7**(3), 30679–30684.
- 17 F. Momen-Heravi, L. Balaj, S. Alian, P.-Y. Mantel, A. E. Halleck, A. J. Trachtenberg, C. E. Soria, S. Oquin, C. M. Bonebreak, E. Saracoglu, J. Skog and W. P. Kuo, *Biol. Chem.*, 2013, **394**(10), 1253–1262.
- 18 H. G. Lamparski, A. Metha-Damani, J. Y. Yao, S. Patel, D. H. Hsu, C. Ruegg and J. B. Le Pecq, *J. Immunol. Methods*, 2002, **270**(2), 211–226.
- 19 B. J. Tauro, D. W. Greening, R. A. Mathias, H. Ki, S. Mathivanan, A. M. Scott and R. J. Simpson, *Methods*, 2012, **56**(2), 293–304.
- 20 C. Thery, A. Clayton, S. Amigorena and G. Raposo, *Curr. Protoc. Cell Biol.*, 2006, 1–29, unit 3.22 pag.
- 21 J. Van Deun, P. Mestdagh, R. Sormunen, V. Cocquyt, K. Vermaelen, J. Vandesompele, M. Bracke, O. De Wever and A. Hendrix, *J. Extracell. Vesicles*, 2014, **3**, 24858–24862.
- 22 S. S. Kanwar, C. J. Dunlay, D. M. Simeone and S. Nagraath, *Lab Chip*, 2014, **14**, 1891–1900.
- 23 C. Chen, J. Skog, C.-H. Hsu, R. T. Lessard, L. Balaj, T. Wurdinger, B. S. Carter, X. O. Breakefield, M. Toner and D. Irimia, *Lab Chip*, 2010, **10**, 505–511.
- 24 M. He, J. Crow, M. Roth, Y. Zeng and A. K. Godwin, *Lab Chip*, 2014, **14**, 3773–3780.
- 25 H. Im, H. Shao, Y. I. Park, V. M. Peterson, C. M. Castro, R. Weissleder and H. Lee, *Nat. Biotechnol.*, 2014, **32**(5), 490–495.
- 26 R. Vaidyanathan, M. Naghibosadat, S. Rauf, D. Korbie, L. G. Carrascosa, M. J. Shiddiky and M. Trau, *Anal. Chem.*, 2014, **86**(22), 11125–11132.
- 27 J. S. Dudani, D. G. Gossett, H. T. K. Tse, R. J. Lamm, R. P. Kulkarni and D. Di Carlo, *Biomicrofluidics*, 2015, **9**(1), 014112.
- 28 R. T. Davies, J. Kim, S. C. Jang, E.-J. Choi, Y. S. Gho and J. Park, *Lab Chip*, 2012, **12**, 5202–5210.
- 29 D. L. Sparks and M. C. Phillips, *J. Lipid Res.*, 1992, **33**, 123–130.
- 30 H. Zhou, P. S. T. Yuen, T. Pisitkun, P. A. Gonzales, H. Yasuda, J. W. Dear, P. Gross, M. A. Knepper and R. A. Star, *Kidney Int.*, 2006, **69**(8), 1471–1476.
- 31 W. Oosthuyzen, N. E. L. Sime, J. R. Ivy, E. J. Turtle, J. M. Street, J. Pound, L. E. Bath, D. J. Webb, C. D. Gregory,



- M. A. Bailey and J. W. Dear, *J. Physiol.*, 2013, **591**(23), 5833–5842.
- 32 K. W. Witwer, E. I. Buzàs, L. T. Bemis, A. Bora, C. Lässer, J. Lötvall, E. N. Nolte-t Hoen, M. G. Piper, S. Sivaraman, J. Skog, C. Théry, M. H. Wauben and F. Hochberg, *J. Extracell. Vesicles*, 2013, **2**, 20360.
- 33 J. Rho, J. Chung, H. Im, M. Liang, H. Shao, C. M. Castro, R. Weissleder and H. Lee, *ACS Nano*, 2013, **7**(12), 11227–11233.
- 34 S. M. Santana, M. A. Antonyak, R. A. Cerione and B. J. Kirby, *Biomed. Microdevices*, 2014, **16**, 869–877.
- 35 H. Shao, J. Chung, L. Balaj, A. Charest, D. D. Bigner, B. S. Carter, F. H. Hochberg, X. O. Breakefield, R. Weissleder and H. Lee, *Nat. Med.*, 2012, **18**(12), 1835–1840.
- 36 F. Wei, J. Yang and D. T. W. Wong, *Biosens. Bioelectron.*, 2013, **44**, 115–121.
- 37 D. Toller, K. Richards, Z. Slouka, S. Senapati, R. Hill, D. B. Go and H.-C. Chang, *Lab Chip*, 2015, **15**(7), 1656–1666.

