



THE UNIVERSITY *of* EDINBURGH

Edinburgh Research Explorer

Ultrasmall superparamagnetic particles of iron oxide-enhanced magnetic resonance imaging in the assessment of cellular inflammation after myocardial infarction

Citation for published version:

Stirrat, CG, Alam, S, Macgillivray, TJ, Gray, CD, Dweck, MR, Mirsadraee, S, Mckillop, G, Henriksen, PA, Newby, D & Semple, S 2015, 'Ultrasmall superparamagnetic particles of iron oxide-enhanced magnetic resonance imaging in the assessment of cellular inflammation after myocardial infarction' pp. P252. DOI: 10.1186/1532-429X-17-S1-P252

Digital Object Identifier (DOI):

[10.1186/1532-429X-17-S1-P252](https://doi.org/10.1186/1532-429X-17-S1-P252)

Link:

[Link to publication record in Edinburgh Research Explorer](#)

Document Version:

Publisher's PDF, also known as Version of record

Publisher Rights Statement:

2015 Stirrat et al; licensee BioMed Central Ltd. This is an Open Access article distributed under the terms of the Creative Commons Attribution License (<http://creativecommons.org/licenses/by/4.0>), which permits unrestricted use, distribution, and reproduction in any medium, provided the original work is properly cited. The Creative Commons Public Domain Dedication waiver (<http://creativecommons.org/publicdomain/zero/1.0/>) applies to the data made available in this article, unless otherwise stated

General rights

Copyright for the publications made accessible via the Edinburgh Research Explorer is retained by the author(s) and / or other copyright owners and it is a condition of accessing these publications that users recognise and abide by the legal requirements associated with these rights.

Take down policy

The University of Edinburgh has made every reasonable effort to ensure that Edinburgh Research Explorer content complies with UK legislation. If you believe that the public display of this file breaches copyright please contact openaccess@ed.ac.uk providing details, and we will remove access to the work immediately and investigate your claim.



POSTER PRESENTATION

Open Access

Ultrasmall superparamagnetic particles of iron oxide-enhanced magnetic resonance imaging in the assessment of cellular inflammation after myocardial infarction

Colin G Stirrat^{2,1*}, Shirjel Alam^{2,1}, Thomas J MacGillivray^{1,3}, Calum D Gray^{1,3}, Marc R Dweck^{2,1}, Saeed Mirsadraee^{1,4}, Graham McKillop⁴, Peter A Henriksen^{2,1}, David Newby^{2,1}, Scott Semple^{1,2}

From 18th Annual SCMR Scientific Sessions
Nice, France. 4-7 February 2015

Background

Excessive inflammation after myocardial infarction (MI) can be detrimental to the recovery of cardiac function.^{1,2} Ultrasmall superparamagnetic particles of iron oxide (USPIO)-enhanced magnetic resonance imaging (MRI) can be used to detect myocardial cellular inflammation. USPIO are engulfed by resident macrophages through phagocytosis and pinocytosis resulting in concentration within inflamed tissues. We aimed to determine the time course and duration of USPIO-enhancement following acute MI (Figure 1).

Methods

Thirty patients with acute MI were studied in the 3-month period following acute MI. Repeated T2*-weighted 3T

MRI was performed immediately before and 24 h after USPIO (ferumoxytol, 4 mg/kg) administration at 2±1, 5±2, 13±3, 21±4 and 90±9 days. Myocardial regions of interest (ROIs) were drawn and categorised into infarct and non-infarct regions by the presence or absence of late gadolinium enhancement (LGE). R2* values (1/T2*) within ROIs were determined to assess the time course and duration of uptake of USPIO.

Results

Following single-dose USPIO administration 2-7 days after acute MI, USPIO uptake is demonstrable at 24 h (p<0.001) and is cleared within 4-8 days. Increased USPIO uptake is seen in the infarct region at days 2-3 (p<0.001), days 4-7 (p<0.01), and days 10-16 (p<0.05) compared to non-

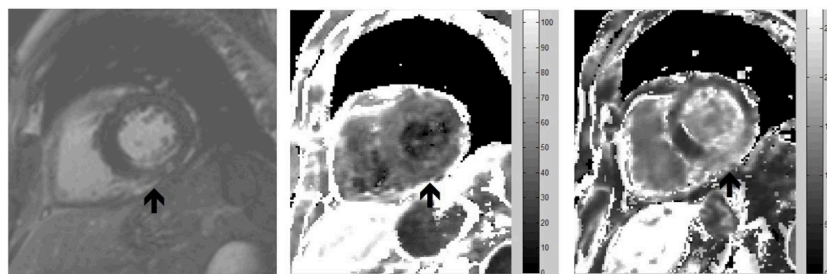


Figure 1 Patient imaged 5 days after an inferior MI. Images show late gadolinium enhancement in the region of the MI (left). R2* colour maps of the baseline pre-USPIO scan (middle), and 24 hours following USPIO administration (right). USPIO uptake, with increased R2* values, is shown by the lighter area of the colour map in the region of the inferior wall infarct (arrow).

²Centre for Cardiovascular Science, University of Edinburgh, Edinburgh, UK
Full list of author information is available at the end of the article

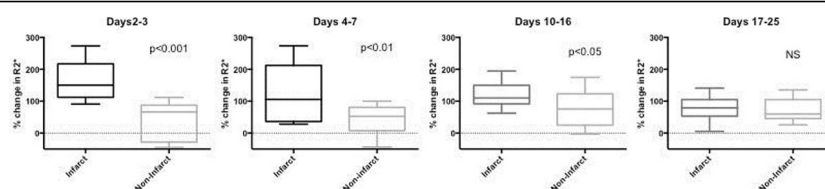


Figure 2 Increased USPIO uptake is seen in the infarct region at days 2-3 ($p < 0.001$), 4-7 ($p < 0.01$), and days 10-16 ($p < 0.05$) compared to non-infarcted myocardium. There is no difference in uptake at later time points (Days 81-99 not shown).

infarcted myocardium (Figure 2). There was no difference in uptake between regions at later time points (21 ± 4 and 90 ± 9 days).

Conclusions

USPIO-enhanced MRI can detect and quantify infarct-related cellular inflammation in the first 2 weeks following acute MI. This imaging tool holds promise to non-invasively assess myocardial cellular inflammation after MI and in other inflammatory cardiac conditions. It has the potential to monitor disease progression and remission, and may provide a future platform on which to test novel anti-inflammatory therapies for the heart.

Funding

The BHF have provided funding for this work (FS/12/83/29781).

Authors' details

¹Clinical Research Imaging Centre, University of Edinburgh, Edinburgh, UK.

²Centre for Cardiovascular Science, University of Edinburgh, Edinburgh, UK.

³Wellcome Trust Clinical Research Facility, NHS Lothian, Edinburgh, UK.

⁴Department of Radiology, NHS Lothian, Edinburgh, UK.

Published: 3 February 2015

doi:10.1186/1532-429X-17-S1-P252

Cite this article as: Stirrat et al.: Ultrasmall superparamagnetic particles of iron oxide-enhanced magnetic resonance imaging in the assessment of cellular inflammation after myocardial infarction. *Journal of Cardiovascular Magnetic Resonance* 2015 **17**(Suppl 1):P252.

Submit your next manuscript to BioMed Central and take full advantage of:

- Convenient online submission
- Thorough peer review
- No space constraints or color figure charges
- Immediate publication on acceptance
- Inclusion in PubMed, CAS, Scopus and Google Scholar
- Research which is freely available for redistribution

Submit your manuscript at
www.biomedcentral.com/submit

 BioMed Central