



THE UNIVERSITY *of* EDINBURGH

Edinburgh Research Explorer

Effect of wood smoke exposure on vascular function and thrombus formation in healthy fire fighters

Citation for published version:

Hunter, AL, Unosson, J, Bosson, JA, Langrish, JP, Pourazar, J, Raftis, JB, Miller, MR, Lucking, AJ, Boman, C, Nyström, R, Donaldson, K, Flapan, AD, Shah, A, Pung, L, Sadiktsis, I, Masala, S, Westerholm, R, Sandström, T, Blomberg, A, Newby, DE & Mills, NL 2014, 'Effect of wood smoke exposure on vascular function and thrombus formation in healthy fire fighters' *Particle and Fibre Toxicology*, vol. 11, no. 1, 62. DOI: 10.1186/s12989-014-0062-4

Digital Object Identifier (DOI):

[10.1186/s12989-014-0062-4](https://doi.org/10.1186/s12989-014-0062-4)

Link:

[Link to publication record in Edinburgh Research Explorer](#)

Document Version:

Publisher's PDF, also known as Version of record

Published In:

Particle and Fibre Toxicology

General rights

Copyright for the publications made accessible via the Edinburgh Research Explorer is retained by the author(s) and / or other copyright owners and it is a condition of accessing these publications that users recognise and abide by the legal requirements associated with these rights.

Take down policy

The University of Edinburgh has made every reasonable effort to ensure that Edinburgh Research Explorer content complies with UK legislation. If you believe that the public display of this file breaches copyright please contact openaccess@ed.ac.uk providing details, and we will remove access to the work immediately and investigate your claim.



RESEARCH

Open Access

Effect of wood smoke exposure on vascular function and thrombus formation in healthy fire fighters

Amanda L Hunter¹, Jon Unosson², Jenny A Bosson², Jeremy P Langrish¹, Jamshid Pourazar², Jennifer B Raftis³, Mark R Miller¹, Andrew J Lucking¹, Christoffer Boman⁴, Robin Nyström⁴, Kenneth Donaldson³, Andrew D Flapan⁵, Anoop SV Shah¹, Louis Pung¹, Ioannis Sadiktsis⁶, Silvia Masala⁶, Roger Westerholm⁶, Thomas Sandström², Anders Blomberg², David E Newby¹ and Nicholas L Mills^{1*}

Abstract

Background: Myocardial infarction is the leading cause of death in fire fighters and has been linked with exposure to air pollution and fire suppression duties. We therefore investigated the effects of wood smoke exposure on vascular vasomotor and fibrinolytic function, and thrombus formation in healthy fire fighters.

Methods: In a double-blind randomized cross-over study, 16 healthy male fire fighters were exposed to wood smoke (~1 mg/m³ particulate matter concentration) or filtered air for one hour during intermittent exercise. Arterial pressure and stiffness were measured before and immediately after exposure, and forearm blood flow was measured during intra-brachial infusion of endothelium-dependent and -independent vasodilators 4–6 hours after exposure. Thrombus formation was assessed using the *ex vivo* Badimon chamber at 2 hours, and platelet activation was measured using flow cytometry for up to 24 hours after the exposure.

Results: Compared to filtered air, exposure to wood smoke increased blood carboxyhaemoglobin concentrations (1.3% versus 0.8%; $P < 0.001$), but had no effect on arterial pressure, augmentation index or pulse wave velocity ($P > 0.05$ for all). Whilst there was a dose-dependent increase in forearm blood flow with each vasodilator ($P < 0.01$ for all), there were no differences in blood flow responses to acetylcholine, sodium nitroprusside or verapamil between exposures ($P > 0.05$ for all). Following exposure to wood smoke, vasodilatation to bradykinin increased ($P = 0.003$), but there was no effect on bradykinin-induced tissue-plasminogen activator release, thrombus area or markers of platelet activation ($P > 0.05$ for all).

Conclusions: Wood smoke exposure does not impair vascular vasomotor or fibrinolytic function, or increase thrombus formation in fire fighters. Acute cardiovascular events following fire suppression may be precipitated by exposure to other air pollutants or through other mechanisms, such as strenuous physical exertion and dehydration.

Trial registration: ClinicalTrials.gov Identifier: NCT01495325.

Keywords: Wood smoke, Air pollution, Fire-fighters, Vascular function, Thrombosis

* Correspondence: nick.mills@ed.ac.uk

¹BHF Centre for Cardiovascular Science, University of Edinburgh, Edinburgh, UK

Full list of author information is available at the end of the article

Background

Cardiovascular events are the leading cause of occupational death amongst fire fighters and account for approximately 45% of fatalities per year [1]. Moreover, the risk of acute myocardial infarction is increased 12- to 136-fold during fire suppression duties as compared to non-emergency duties and is likely to reflect a combination of factors including extreme physical exertion, mental stress, and exposure to heat and air pollutants [2]. Firefighters, during active fire suppression, are usually protected from smoke exposure by self-contained breathing apparatus (SCBA), however this is often disregarded in potentially hazardous, but tolerable situations, such as wildland fires where the long duration and remote location of fire fighting often renders SCBA wearing impractical [3]. Respiratory protection, therefore, often takes the form of a cotton rag or bandana tied around the nose and mouth.

Air pollution is an established risk factor for the development of both acute and chronic cardiovascular diseases [4–11] with exposure to particulate matter (PM) consistently associated with adverse cardiovascular health effects. The mechanisms through which specific air pollutants, and in particular traffic-derived air pollutants, influence the cardiovascular system have been intensively studied and an understanding of their effects on the pathophysiology of disease is emerging. In contrast, the health effects of wood smoke and biomass exposure have received little attention. Wood smoke contributes large quantities of ultrafine particles to our environment through the combustion of biomass for heating and cooking, and during major wildland fires. Firefighters have significant and often prolonged exposures during wildland fire fighting, an important duty of the fire service.

We have previously demonstrated that exposure to diesel exhaust impairs endothelial vasomotor and fibrinolytic function and increased ex-vivo thrombosis in man [12,13]. We have also demonstrated that exposure to wood smoke causes transient increases in arterial stiffness in healthy volunteers [14]. We therefore hypothesised that exposure to wood smoke, rich in ultrafine particulate matter, would have similar adverse effects and may explain the association between fire suppression and excess cardiovascular death. We therefore assessed the effect of exposure to wood smoke on vascular vasomotor and fibrinolytic function, and thrombus formation in healthy fire fighters.

Results

Exposures were well tolerated with no adverse symptoms reported and all subjects completed both study visits.

Within the chamber, particulate matter with an aerodynamic diameter $<1 \mu\text{m}$ (PM_{10}) concentrations were

$1,115 \pm 151 \mu\text{g}/\text{m}^3$, with nitrogen oxides (NO_x) and carbon monoxide (CO) concentrations of 0.6 ± 0.1 ppm and 16.0 ± 1.1 ppm respectively (Table 1; Figure 1). Total PM mass was consistent with the target concentration for the study, as shown by both TEOM and filter measurements. The high EC/TC ratio illustrates the high soot content in wood smoke. The total PAH concentration in the exposure chamber was $4.3 \pm 2.5 \mu\text{g}/\text{m}^3$, of which 90% was associated with wood smoke PM. The concentration of PM associated benzo[a]pyrene was $443 \pm 302 \text{ ng}/\text{m}^3$. The most abundant PAH compounds in the wood smoke PM fraction, accounting for $88 \pm 1\%$ of the total analyzed PAH (both PM associated and gas phase), were (in descending order): benzo[a]pyrene, chrysene, benzo[b]fluoranthene, benz[a]anthracene, benzo[e]pyrene, benzo[ghi]perylene, benzo[ghi]fluoranthene, indeno[1,2,3-cd]pyrene, pyrene, fluoranthene, benzo[k]fluoranthene and coronene (Additional file 1: Table S1).

The mean primary particle size was 168 nm and the number size distribution (mobility diameter) was clearly bi-modal with a lower peak around 50–80 nm and an upper peak around 150–200 nm (Figure 2). Wood smoke particulate generated superoxide free radicals in physiological saline solutions in the absence of cells or tissue. Comparing equivalent masses of particulate, the superoxide generating capacity of wood smoke particulates was greater than standard reference material urban dust or pyrogallol controls ($P < 0.001$) (Figure 2).

Haematology

Blood carboxyhaemoglobin concentrations increased from 0.9 ± 0.04 to $1.3 \pm 0.04\%$ immediately following exposure to wood smoke ($P < 0.001$) (Table 2). Total leucocyte, lymphocyte, neutrophil and platelet counts, were unaffected for up to 24 h after the exposure.

Arterial stiffness and vascular function

Resting blood pressure and heart rate were unchanged during either exposure or for up to 24 h after exposure (Table 3). Augmentation index, augmentation pressure and pulse wave velocity increased immediately after exposure ($P > 0.05$), but changes were similar following exposure to wood smoke and filtered air ($P > 0.05$ for all comparisons of wood smoke versus filtered air).

There was a dose-dependent increase in forearm blood flow with each vasodilator ($P < 0.01$ for all). However there were no differences in blood flow responses to acetylcholine ($P = 0.91$), sodium nitroprusside ($P = 0.52$) or verapamil ($P = 0.63$) between exposures (Figure 3). In contrast, there was an increase in forearm blood flow with bradykinin infusion following exposure to wood smoke compared to filtered air ($P = 0.003$). Bradykinin caused a dose-dependent release of tissue plasminogen activator

Table 1 Characterization of wood smoke exposure and particulate matter

	n	Unit	Mean	SD	Min	Max
PM ₁ mass concentration (TEOM)	16	µg/m ³	1,115	151	922	1,561
PM ₁ mass concentration (filter)	16	µg/m ³	899	100	726	1,105
Carbon monoxide	16	ppm	16	6	8	25
Nitrogen oxides	16	ppm	0.6	0.3	0.3	1.0
Elemental carbon/total carbon ¹	6	ratio	0.80	0.02	0.79	0.83
Organic fraction of total PM ^{1,2}	6	%	23.1	4.7	16.9	28.8
Soot fraction of total PM ¹	6	%	60.1	15.7	39.9	78.8
PAH – PM associated (filter) ^{1,3}	6	µg/m ³	3.9	2.3	1.5	6.7
PAH – semi-volatile (PUF) ^{1,3}	6	µg/m ³	0.4	0.3	0.1	0.9

¹OC-EC and PAH analysis from selected samples throughout the campaign (n = 6).

²Estimated based on the OC-EC analysis (assuming a factor of 1.8 used to convert OC to total organic PM and a factor of 1.1 used to convert EC to total soot PM).

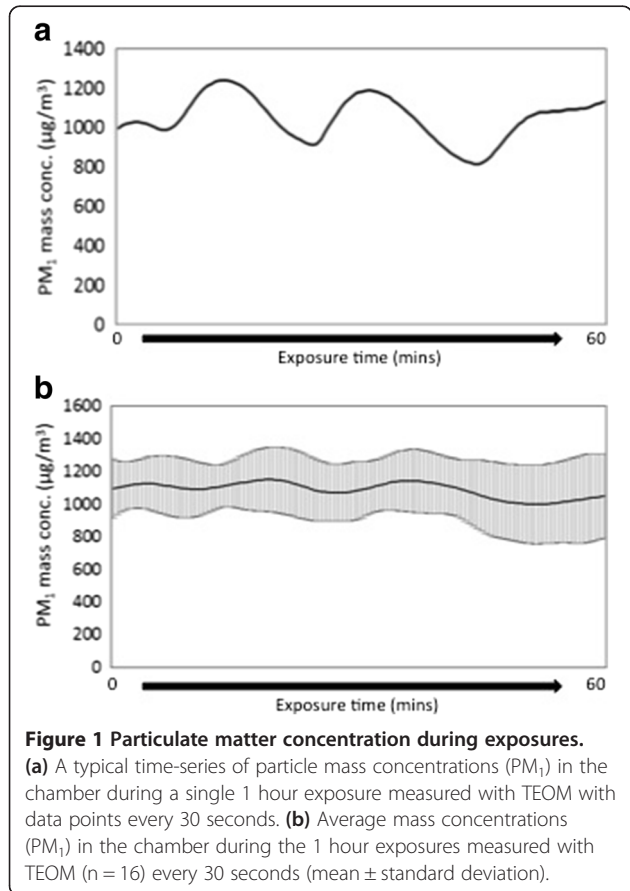
³Includes the PAHs: phenanthrene, anthracene, 4H-cyclopenta[def]phenanthrene, 2-phenylnaphthalene, fluoranthene, pyrene, 1-methylfluoranthene, benz[a]fluorene, benz[b]fluorene, 2-methylpyrene, 4-methylpyrene, 1-methylpyrene, benzo[c]phenanthrene, benzo[ghi]fluoranthene, benzo[b]naphtho[1,2-d]thiophene, benz[a]anthracene, chrysene, 3-methylchrysene, 2-methylchrysene, 6-methylchrysene, 1-methylchrysene, benzo[b]fluoranthene, benzo[k]fluoranthene, benzo[e]pyrene, benzo[a]pyrene, perylene, indeno[1,2,3-cd]fluoranthene, indeno[1,2,3-cd]pyrene, dibenz[a,h]anthracene, picene, benzo[ghi]perylene, dibenzo[a,l]pyrene, dibenzo[a,e]pyrene, coronene, dibenzo[a,i]pyrene and dibenzo[a,h]pyrene.

antigen (P < 0.01), which was similar after both exposures (P = 0.72) (Figure 4).

Platelet activation and thrombosis

Platelet-monocyte binding, monocyte surface expression of CD40 and platelet surface expression of CD40L and

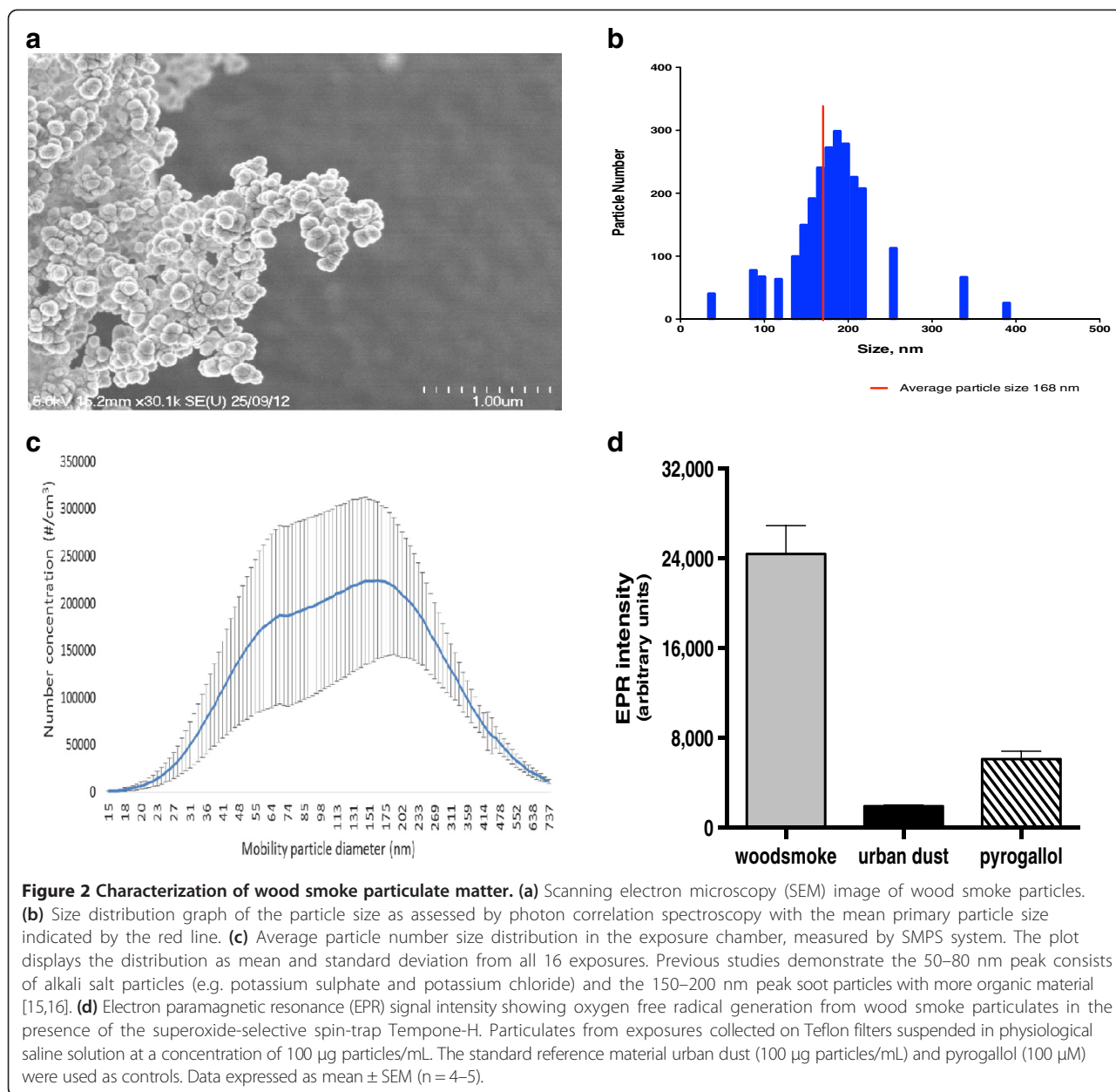
P-selectin were similar following wood smoke and filtered air exposure at 2 and 24 h following exposure (P > 0.05 for all) (Figure 4). There was no difference in thrombus formation following exposure to wood smoke compared with filtered air (thrombus area 12,216 ± 3,237 versus 12,775 ± 3,831 µm², P = 0.54) (Figure 4).



Discussion

Controlled exposure to wood smoke at high particulate concentrations does not impair endothelial-dependent or -independent vasodilation or increase thrombosis in firefighters. Using established methodology and a comprehensive assessment of cardiovascular health we found no adverse effects of wood smoke to explain the cardiovascular risk associated with fire suppression duties.

Whilst there have been no prior controlled exposures to wood smoke in firefighters, the effect of wood smoke on vascular function has been studied in healthy volunteers [17] and systemic inflammatory effects have been observed in firefighters responding to forest fires [18-20]. We have previously demonstrated that exposure to wood smoke for 3 hours at a lower PM concentration of 300 µg/m³ caused a transient increases in arterial stiffness and heart rate [14]. In contrast, we found no effect on arterial stiffness or heart rate following exposure to wood smoke at three-fold higher concentrations in firefighters over one hour. The overall dose was similar in both studies. These discordant findings may be explained by differences in susceptibility to wood smoke between healthy volunteers and firefighters with the latter having had multiple previous exposures to wood smoke through their occupation. There is some evidence that repeated exposure to smoke upregulates anti-oxidant levels in the airways and may diminish the effects of an acute exposure [21]. However we restricted enrollment to those firefighters who had



not attended a major structural or wildland fire for more than one week prior to study visits and the effects of previous exposure on anti-oxidant levels are likely to be transient. It is also interesting to note that the baseline heart rates in our previous study [14] were approximately 10 bpm higher than in this study, perhaps suggesting previous participants were more susceptible to any effects of exposure on the autonomic nervous system. The duration of exposure may also be important with effects of wood smoke on arterial tone emerging after longer exposure periods. However, Forchhammer et al. recently observed no effect of wood smoke on peripheral arterial tone assessed by finger plethysmography despite delivering PM at 350 µg/m³ for up to 3 hours [17].

Venous occlusion plethysmography with intra-arterial infusion of vasodilators is widely regarded as the ‘gold-standard’ assessment of vascular function. We found no detrimental effect of exposure to wood smoke or filtered air on either endothelium-dependent or -independent vasodilatation. In fact we demonstrate a small increase in blood flow in response to bradykinin infusion following wood smoke exposure. It is plausible this was due to the effects of carbon monoxide exposure at concentrations that were sufficient to increase carboxyhaemoglobin concentrations and indeed, carbon monoxide is emerging as an important mediator of the vasodilator effects of bradykinin in the vessel wall [22]. The levels of carbon monoxide in this study were 4-fold higher than previous exposures to dilute

Table 2 Haematological effects of exposure to wood smoke and filtered air

		Filtered air	Wood smoke	P value ¹
Carboxyhaemoglobin, %	Baseline	0.9 ± 0.0	0.9 ± 0.0	<0.001
	2 hours	0.8 ± 0.0	1.3 ± 0.0*	
	24 hours	0.8 ± 0.0	0.8 ± 0.0	
Leucocytes × 10⁹ cells/L	Baseline	5.5 ± 0.4	5.6 ± 0.4	0.22
	2 hours	6.1 ± 0.3	6.4 ± 0.4	
	6 hours	6.5 ± 0.3	6.9 ± 0.4	
	24 hours	5.4 ± 0.3	5.6 ± 0.4	
Lymphocytes × 10⁹ cells/L	Baseline	2.0 ± 0.2	2.0 ± 0.2	0.11
	2 hours	1.9 ± 0.1	1.8 ± 0.1	
	6 hours	2.0 ± 0.1	2.1 ± 0.1	
	24 hours	2.0 ± 0.2	2.0 ± 0.2	
Neutrophils × 10⁹ cells/L**	Baseline	2.8 ± 0.3	2.9 ± 0.3	0.20
	2 hours	3.6 ± 0.3	3.9 ± 0.4	
	6 hours	3.8 ± 0.3	4.1 ± 0.3	
	24 hours	2.8 ± 0.2	3.0 ± 0.3	
Platelets × 10⁹ cells/L**	Baseline	225 ± 6	229 ± 7	0.07
	2 hours	212 ± 6	219 ± 7	
	6 hours	205 ± 5	203 ± 9	
	24 hours	225 ± 7	234 ± 6	

Values are reported as mean ± SEM.

¹2-way ANOVA with repeated measures comparing filtered air and wood smoke exposures.

*P < 0.001 following Bonferroni correction comparing filtered air and wood smoke at a given time point.

**P < 0.05 for trend across time.

diesel exhaust [23] and therefore it is plausible that vasodilation as a consequence of higher gaseous pollutants (carbon monoxide or nitrogen oxides [24]), may be important here. Nevertheless, it is unlikely that this would offset any detrimental effects of wood smoke PM on forearm blood flow across other vasodilators. There were no other important or adverse effects of wood smoke on vascular function, including endogenous fibrinolysis, platelet activation and thrombosis. Taken together these findings suggest that exposure to wood smoke is unlikely to be the primary cause of acute adverse cardiovascular events in firefighters.

Whilst traffic-related air pollution is an established trigger for acute myocardial infarction [4,6,9,25], there are few studies that have linked exposure to wood smoke or biomass with cardiovascular events. The risk in firefighters may be mediated by other factors, such as exposure to extreme heat, physical exertion and psychological stress. Heat stress results from both high ambient temperatures and exercise-induced metabolic activity, exacerbated by insulated protective clothing. In controlled studies, heat stress causes vasodilatation and fluid loss, resulting in a reduction in cardiac output and a hypercoagulable state [26-29]. Strenuous physical exertion is an independent trigger of sudden cardiovascular events, particularly in individuals unaccustomed to exercise [30]. Fire suppression

often requires firefighters to work at the extremes of physical capability associated with heart rates in excess of age predicted maximums [26,27,31-33] and for long periods with shifts frequently lasting 12 to 24 h [34]. Whilst exposure to wood smoke may not in isolation cause vascular dysfunction or induce a prothrombotic state, it remains plausible that firefighters responding to wildland fires are at increased risk of an acute cardiovascular event through a combination of factors that could still include wood smoke. Furthermore, firefighters are also exposed to a heterogeneous mix of air pollutants during other activities and although the use of breathing apparatus is employed in these situations, at the perimeter of such fires and in the aftermath when, breathing apparatus is removed important exposures may occur.

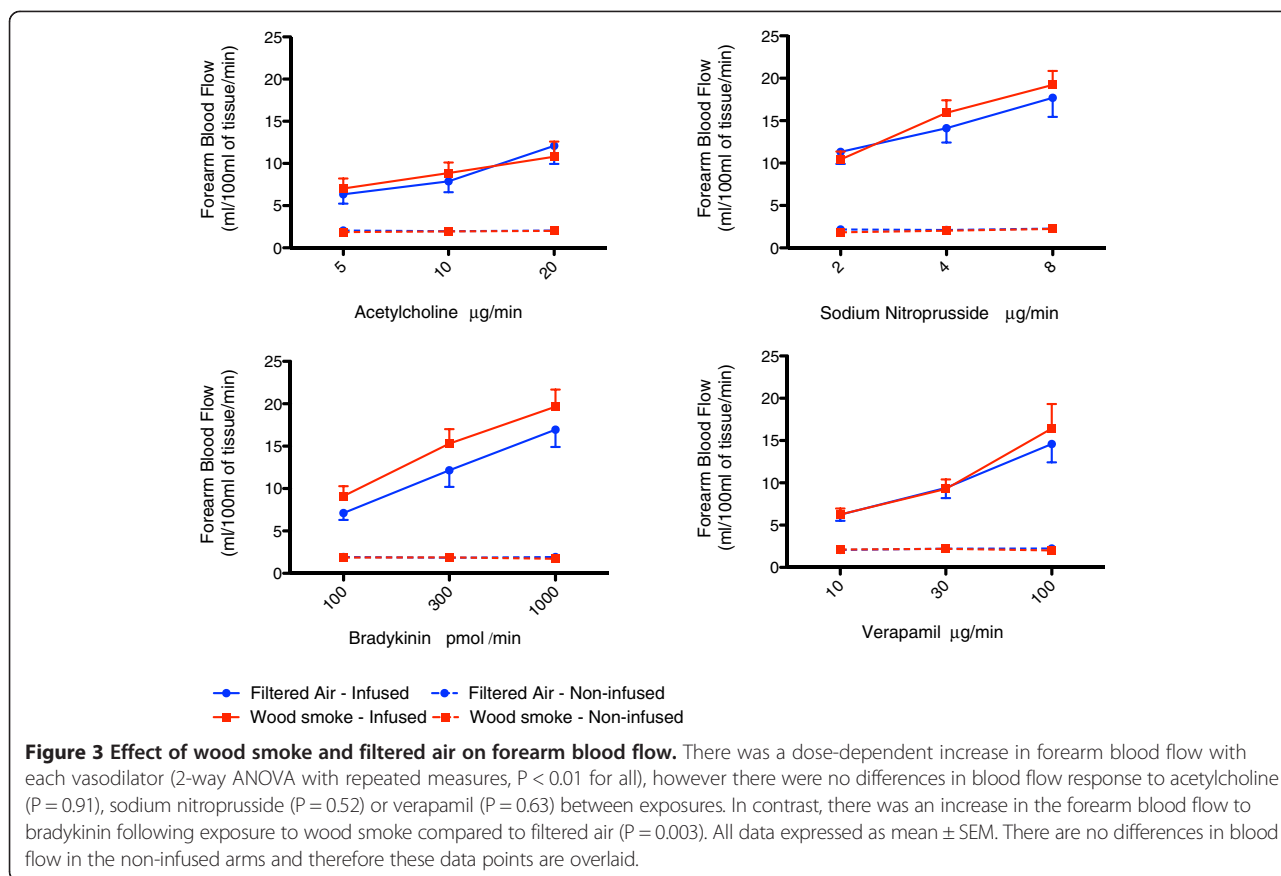
It is perhaps surprising that exposure to fine wood smoke particles at concentrations in excess of 1,000 µg/m³ had no adverse effects given that exposure to diesel exhaust at 300 µg/m³ has previously been shown to impair vascular function and increase thrombus formation in healthy men [12,13,35]. Differences in particle properties such as size, composition and surface chemistry between these exposures are likely to be important. Although the majority of wood smoke and diesel exhaust particles are in the ultrafine size fraction, the diameter of primary wood smoke particles was 5-fold larger than diesel exhaust

Table 3 Haemodynamic effects of exposure to wood smoke and filtered air

		Baseline	Post-exposure										P-value ¹
			0 mins	10 mins	20 mins	30 mins	40 mins	50 mins	1 hr	2 hrs	6 hrs	24 hr mean	
Systolic pressure, mmHg	Filtered air	135 ± 2	134 ± 2	133 ± 2	130 ± 3	131 ± 2	131 ± 2	130 ± 3	133 ± 2	132 ± 2	130 ± 2	124 ± 2	0.59
	Wood smoke	132 ± 2	135 ± 3	131 ± 3	130 ± 3	131 ± 3	130 ± 3	130 ± 3	135 ± 4	134 ± 5	131 ± 3	127 ± 2	
Diastolic pressure, mmHg	Filtered air	75 ± 2	74 ± 3	75 ± 2	75 ± 2	73 ± 4	76 ± 2	76 ± 2	76 ± 2	76 ± 2	76 ± 27	68 ± 2	0.89
	Wood smoke	75 ± 2	74 ± 2	74 ± 2	73 ± 2	74 ± 2	74 ± 2	76 ± 2	77 ± 2	77 ± 2	75 ± 2	70 ± 2	
Heart rate, bpm	Filtered air	63 ± 2	63 ± 3	63 ± 3	61 ± 3	60 ± 2	59 ± 2	59 ± 2	58 ± 2	58 ± 2	59 ± 2	56 ± 2	0.12
	Wood smoke	61 ± 3	63 ± 3	63 ± 3	62 ± 3	62 ± 3	61 ± 3	61 ± 3	60 ± 3	60 ± 3	58 ± 3	55 ± 2	
Δ Augmentation pressure, mmHg	Filtered air	-	0.2 ± 0.5	-0.4 ± 0.7	-0.7 ± 0.6	-0.1 ± 0.7	-0.2 ± 0.7	0.1 ± 0.7	0.7 ± 0.7	-	-	-	0.90
	Wood smoke	-	1.0 ± 0.8	-0.2 ± 0.3	-0.5 ± 0.3	-0.7 ± 0.4	-0.3 ± 0.5	0.6 ± 0.5	0.2 ± 0.5	-	-	-	
Δ Augmentation index @75 bpm, %	Filtered air	-	0.01 ± 4.6	-1.7 ± 6.7	-3.9 ± 6.1	-2.8 ± 7.6	-3.0 ± 7.5	-2.2 ± 7.0	-1.2 ± 7.2	-	-	-	0.72
	Wood smoke	-	2.3 ± 7.6	-1.1 ± 4.0	-2.0 ± 5.1	-3.2 ± 5.0	-3.0 ± 6.4	-1.3 ± 6.7	-1.6 ± 6.0	-	-	-	
Δ Pulse wave velocity, m/s	Filtered air	-	0.1 ± 0.1	0.0 ± 0.1	0.1 ± 0.1	0.0 ± 0.1	-0.1 ± 0.1	0.0 ± 0.1	0.4 ± 0.5	-	-	-	0.98
	Wood smoke	-	0.0 ± 0.1	-0.1 ± 0.1	0.0 ± 0.1	-0.1 ± 0.1	0.0 ± 0.1	-0.1 ± 0.1	0.1 ± 0.1	-	-	-	

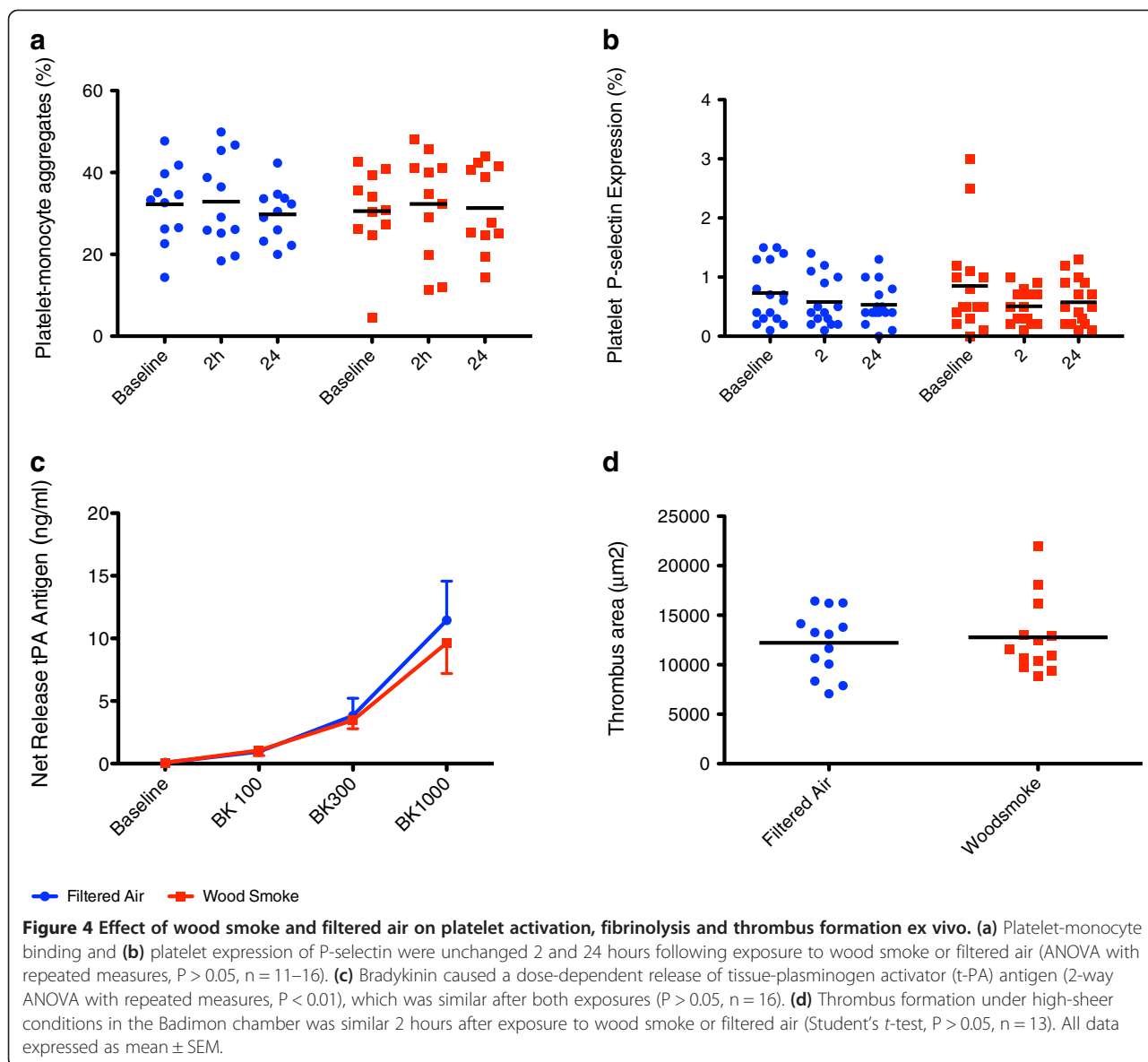
Values are reported as mean ± SEM.

¹2-way ANOVA with repeated measures comparing wood smoke and filtered air (baseline to 6 hrs); paired Students t-tests were performed for 24 hr means (P > 0.05 for all).



particles (primary particle size of NIST standard reference material 2975 is 31 nm). Wood smoke particles are therefore perhaps less likely to deposit in terminal bronchioles or alveolar space and therefore to translocate or deliver soluble components into the circulation where they could directly effect the cardiovascular system. If wood smoke particles are unable to translocate due to larger size then they could perhaps cause a systemic inflammatory response, exerting late effects that were missed by undertaking assessments early after exposure. Others have shown that controlled exposure to fine and coarse PM is associated with early autonomic imbalance: rapid elevation of blood pressure and heart rate, and decreased heart rate variability immediately following exposure [36-39]. Conversely, we may have missed any immediate effects mediated by autonomic imbalance that were not comprehensively assessed in this study, although blood pressure and heart rate were unaffected acutely and over the 24 hour study period. Differences in surface chemistry are also likely to be important. Whilst wood smoke particles were able to generate super-oxide radicals, there were major differences in the PAH profile between wood smoke particles, where high molecular weight PAHs (≥ 228 Da) dominated, as compared to diesel exhaust particles [40].

There are some limitations to our study that merit consideration. The time points chosen to conduct our assessments post-exposure were based on the results of previous studies [12-14,23,24,35,41-46]. However, it is possible that wood smoke particles either exert an immediate or late effect on the cardiovascular system and we may have missed such effects. Additionally, the duration of exposure is also likely to be important with cumulative exposures over many days or weeks difficult to model experimentally. We recruited early career firefighters to minimize potential for confounding due to pre-existing vascular disease. Firefighters are exposed to complex mixtures of air pollutants derived from different sources, many of which may be more toxic than our simulated wildland fire exposure. It is plausible that firefighters with risk factors or subclinical disease would be more susceptible to any adverse cardiovascular effects of wood smoke. According to the widely recognized “healthy worker effect” in occupational medicine, it is common that susceptible individuals leave the workplace early due to symptoms, discomfort or acute illness. This may lead to selection bias with the remaining workers less sensitive or resistant to these noxious factors. Furthermore, we prospectively powered the study based on the measurements of primary end points made during previous studies



[12,47-49]. Although we are confident that we have not missed effects on endothelial function or ex vivo thrombosis, we acknowledge that we may have had insufficient power to detect modest changes in some of the secondary end points, and thus cannot exclude the possibility of false-negative findings confounding their assessment. Nevertheless, even allowing for these limitations, in a carefully designed and controlled study with a comprehensive assessment of cardiovascular function, we found no adverse effects of exposure to wood smoke.

Conclusions

Isolated wood smoke exposure at concentrations occurring in the vicinity of major wildland fires did not impair vascular vasomotor or fibrinolytic function, or increase

thrombus formation in firefighters. The acute cardiovascular events associated with fire suppression may not be directly related to wood smoke exposure, rather they may be precipitated by other pollutants or mechanisms such as strenuous physical exertion and dehydration.

Methods

Subjects

Sixteen healthy non-smoking male volunteers (median age 26, range 21-26 years) were enrolled into the study. The study was performed with the approval of local research Ethics Committees, in accordance with the Declaration of Helsinki and the written informed consent of all volunteers. Firefighters were recruited using advertisements in local fire stations. Exclusion criteria were

cigarette smoking or the use of snus (tobacco snuff), the use of regular medication (specifically non-steroidal anti-inflammatory drugs, vitamins or anti-oxidant supplements), known ischemic heart disease, arrhythmia, diabetes mellitus, hypertension, renal or hepatic impairment, asthma, or inter-current infection. Subjects had normal lung function and reported no respiratory symptoms in the 6-week period preceding the study. Subjects had no occupational fire exposure (wildland or structural) for a week preceding study visit.

Study design

Subjects attended on two occasions at least one week apart and were exposed to filtered air or wood smoke for one hour in a double-blind randomized crossover design. Subjects attended at 8 am on the morning of study for initial bloods and for the fitting of Holter and ambulatory blood pressure monitors. Exposures were performed at 10 am in a dedicated exposure facility by researchers and technical staff not involved in the subsequent clinical assessment. Subjects remained indoors following exposure to minimize any confounding effects from ambient air pollution. Vascular studies were carried out in a quiet, temperature-controlled room maintained at 22°C to 24°C with subjects lying supine. All subjects abstained from alcohol and caffeine for 24 h, and from food for at least 4 h before each vascular study.

The primary endpoints were forearm blood flow, estimated t-PA release from the forearm circulation and ex-vivo thrombus formation. Secondary endpoints included arterial stiffness, platelet activation, and changes in haematological variables. Based on previous studies [12–14,23,24,35,41–46], pulse wave analysis and velocity were assessed immediately after exposure, a study of ex-vivo thrombus formation, Badimon study was performed at 2 h, and venous occlusion plethysmography undertaken 4 to 6 h after exposures to wood smoke and filtered air. Venous blood was sampled at baseline, 2, 6 and 24 h after each exposure for storage and quantification of carbonyhaemoglobin. Subjects were fitted with an ambulatory blood pressure monitor (Spacelabs 90217; Spacelabs, Healthcare Ltd, Hertford, UK) prior to each exposure and monitored for 24 h.

Wood smoke exposure

Exposures were performed in a purpose-built exposure chamber in Umeå, Sweden. During each exposure, subjects performed moderate exercise (to generate an average minute ventilation of 20 L/min/m²) on a bicycle ergometer that was alternated with rest at 15-min intervals.

Wood smoke was generated using a common Nordic wood stove using birch wood in an incomplete combustion firing procedure (partial air-starved conditions), generating a soot-rich aerosol emission. To generate

relatively constant incomplete combustion conditions during the 1 hour exposures, small batches (0.5–1.0 kg) birch wood logs were inserted every 5–15 minutes to maintain a high burn rate with repeated air-starved conditions. This procedure was in accordance with our previous wood smoke exposure study [14]. The birch wood was stored outdoors under roof cover for approximately 2.5 years before use and had a moisture content of 16–17% at the time of this study. The wood smoke was diluted with HEPA filtered air in three steps and continuously fed into and through a controlled environment exposure chamber (17 m³) to achieve a steady state concentration.

The atmosphere in the chamber was monitored for pollutants using continuous measurement of oxides of nitrogen (NO_x) (chemiluminescence, CLD 700 Ecophysics, >0.001 ppm) and carbon monoxide (CO) (IR, UNOR6N Maihak). Fine (<1 μm) particulate matter (PM₁) mass concentration was measured on-line using a tapered element oscillating microbalance (TEOM 1400, Thermo Scientific). Integrated with the TEOM a filter (Teflon) sampling line was used to determine the mass concentration gravimetrically. A CO alarm instrument (MC400, Monicon Technology) was used in the chamber during the exposures. The target PM₁ concentration in the chamber was 1,000 μg/m³.

The equivalent mobility diameter (in the range 10–600 nm) of the wood smoke particles was measured in the chamber using a scanning mobility particle sizer (SMPS) (TSI GmbH). Organic (OC) and elemental carbon (EC) were determined using thermal-optical carbon analysis (according to the EUSAAR_2 protocol). These concentrations are regularly encountered at the perimeter of forest fires [50] and indoors when cooking with solid fuels [51], and are below the UK workplace 8 hour average exposure limits (HSE EH40 Workplace Exposure Limits 2005). The temperature in the chamber maintained between 21–24°C with a relative humidity of 50%.

Polycyclic aromatic hydrocarbon analysis

The collected wood smoke PM, and polyurethane foam (PUF) plugs with sampled semi-volatile PAHs were extracted with pressurized fluid extraction using an ASE 200 Accelerated Solvent Extractor system (Dionex Corporation, Sunnyvale, CA, USA). Wood smoke PM was extracted with a solvent composition consisting of toluene and methanol 9:1 at 200°C and 3000 psi (20.7 MPa). PUFs were extracted with hexane at 110°C and 500 psi (3.45 MPa). Details on instrumental parameters are available elsewhere [52,53]. Solid phase extraction sample cleanup was performed to remove polar constituents from the samples according to Christensen et al. [54] followed by instrumental analysis using an automated high pressure liquid chromatography-gas chromatography-mass spectrometry system (HPLC-

GC-MS) [40]. The HPLC part of the system was used for PAH fraction using the back flush technique, where PAHs with 3 and more rings were isolated and introduced into the GC-MS system for separation and detection. The MS was operated in selected ion monitoring mode, and the PAHs were identified using compound specific mass to charge ratio and relative retention time on the GC capillary column. In total 36 PAHs in the range of 178 – 302 Da were analyzed (Additional file 1: Table S1).

Electron paramagnetic resonance

To provide a measure of particle reactivity EPR was used to establish oxygen-centred free radical generation from particulates collected from exposures (Langrish et al. [7]). A 1.6 mm diameter section of Teflon filter from the carbon analysis filter line of the exposure chamber and suspended in physiological saline solution (Krebs buffer, composition in mM: 118.4 NaCl, 25 NaHCO₃, 11 glucose, 4.7 KCl, 1.2 MgSO₄, 1.2 KH₂PO₄, 2.5 CaCl₂) at a particle concentration of 100 µg/mL. Samples were vortexed for 1 min, followed by 30 min sonication (100% power; Fisherbrand FB11002; Fisher Scientific, Loughborough, UK). Suspensions were incubated with the spin-trap, Tempone-H (1 mM; Enzo Life Sciences, Exeter, UK), immediately before the initial measurement. Tempone-H is a highly sensitive spin-trap that shows selectivity for superoxide, forming a stable product that can be measured by EPR [55]. The standard reference material urban dust (SRM1649a; National Institute of Standards and Technology, Gaithersburg, USA) was used as positive control particulate (note, that the results cannot be directly compared to filter particulates, as the proportion of the mass of wood smoke particulate unbound to the filter cannot be determined in the present study). Pyrogallol (100 µM) was used as a second positive control which spontaneously generates superoxide radicals in this buffer [56]. Samples were kept at 37°C throughout and measurements were taken after 30 and 60 min by drawing 50 µL of sample into a capillary tube (VWR International, Lutterworth, UK) and sealing with a plug of soft sealant (Cristaseal, VWR International). An X-band EPR spectrometer (Magnettech MS-200, Berlin, Germany) was used with the following parameters: microwave frequency, 9.3–9.55 Hz; microwave power, 20 mW; modulation frequency, 100 kHz; modulation amplitude, 1500 mG; center field, 3365 G; sweep width, 50 G; sweep time, 30 s; number of passes, 1. Baseline signals from blank (non-exposed) filters were subtracted from that of filters with particulate.

Arterial stiffness

All measurements of arterial stiffness were performed at baseline, and at 10-min intervals after the exposure for one hour as previously described [14]. Pulse rate and blood pressure were measured using a validated semi-

automated oscillometric sphygmomanometer (Boso-Medicus, Boso, Jungingen, Germany). Central arterial stiffness measured by pulse wave analysis was determined with a high-fidelity handheld tonometer (Millar Instruments, Texas, USA) at the right radial artery using the SphygmoCor™ system (AtCor Medical, Sydney, Australia). Carotid-femoral pulse wave velocity measurements were made using the Vicorder system (Skidmore Medical, UK).

Vascular studies

All subjects underwent brachial artery cannulation with a 27-standard wire gauge steel needle under controlled conditions. After a 30-min saline infusion, acetylcholine at 5, 10, and 20 µg/min (endothelium-dependent vasodilator that does not release tissue plasminogen activator [t-PA; Merck Biosciences); bradykinin at 100, 300, and 1000 pmol/min (endothelium-dependent vasodilator that releases t-PA; Merck Biosciences); sodium nitroprusside at 2, 4, and 8 µg/min (endothelium-independent vasodilator that does not release t-PA; David Bull Laboratories) and verapamil at 10, 30, and 100 µg/min (endothelium- and NO-independent vasodilator that does not release t-PA) were infused for 6 min at each dose. Vasodilators were separated by 20-min saline infusions and given in a randomized order except from verapamil, which was always given last due to its longer duration of action [57]. Forearm blood flow was measured in infused and non-infused arms by venous occlusion plethysmography with a mercury-in-silicone elastomer strain gauges as described previously [58].

Venous cannulas (17 gauge) were inserted into large subcutaneous veins of the ante-cubital fossae of both arms. Blood (10 mL) was withdrawn simultaneously from each arm at baseline and during infusion of each dose of bradykinin and collected into acidified buffered citrate (Stabilyte tubes, Biopool International). Samples were kept on ice before being centrifuged at 2000 g for 30 min at 4°C. Platelet-free plasma was decanted and stored at –80°C before assay. Plasma t-PA antigen and activity concentrations were determined by enzyme-linked immunosorbant assay (TECHNOZYM® t-PA Combi Actbind®, Technoclone, Austria). Hematocrit was determined by capillary tube centrifugation at baseline and during infusion of bradykinin at 1000 pmol/min.

Flow cytometry

Samples were obtained at baseline, at 2 h immediately prior to the thrombosis study and at 24 h post exposure, and processed according to previously described protocols [59]. In brief, blood was taken from an ante-cubital vein using a 21-gauge cannula and anti-coagulated with D-phenylalanyl-L-prolyl-L-arginine chloromethylketone (75 µL; Cambridge Biosciences, UK). Samples were not analysed unless venesection achieved rapid and uninterrupted

blood flow. Five minutes after sample collection, samples were stained with the following conjugated monoclonal antibodies: phycoerythrin (PE)-conjugated CD14 (Dako, Denmark), PE-conjugated CD62P, and PE-conjugated CD154 (Becton-Dickinson, UK); PE-conjugated CD40, fluorescein isothiocyanate (FITC)-conjugated CD42a, and FITC-conjugated CD14 (Serotec, USA); and appropriate control isotypes. All antibodies were diluted 1:20. Once stained, samples were incubated for 20 min at room temperature to identify P-selectin and CD40L on the platelet surface and CD40 on the monocyte surface. Platelet–monocyte samples were fixed with FACS-Lyse (Becton-Dickinson). Platelet samples were fixed with 1% paraformaldehyde. Samples were analysed within 24 h using a FACScan flow cytometer (Becton-Dickinson). Platelet–monocyte aggregates were defined as monocytes positive for CD14. Data analysis was performed using FlowJo (Treestar, USA).

Ex-vivo thrombosis studies

Thrombus formation was measured using the Badimon chamber as previously described [13,23]. In brief, a pump was used to draw blood from an antecubital vein through a series of consecutive cylindrical perfusion chambers maintained at 37°C in a water bath. Carefully prepared strips of porcine aorta, from which the intima and a thin layer of media had been removed, acted as the thrombogenic substrate. Each study lasted for 5 min during which flow was maintained at a constant rate of 10 mL/min. Porcine strips with thrombus attached were removed and fixed in 4% paraformaldehyde, wax embedded, sectioned, and stained with Masson's Trichrome. Images were acquired at $\times 20$ magnification, and the thrombus area was measured using an Ariol image acquisition system (Leica Microsystems GmbH, Germany) by a blinded operator. Results from at least six sections were averaged to determine thrombus area for each chamber, as described previously [13,23].

Data analysis and statistics

A sample size of 16 gives us >90% power to detect a 10% difference in thrombus area, 17% difference in mean t-PA release and 22% difference in forearm blood flow at a significance level of 5% [12,47–49]. Continuous variables are reported as mean \pm standard error of the mean (SEM). Statistical analyses were performed with GraphPad Prism, version 5.0 (Graph Pad Software, USA) by 2-way analysis of variance (ANOVA) with repeated measures and 2-tailed Student *t*-test, where appropriate. Statistical significance was taken at two-sided $P < 0.05$.

Additional file

Additional file 1: Table S1. Mean concentration of polyaromatic hydrocarbons (PAH).

Competing interests

The authors declare that they have no competing interests.

Authors' contributions

NLM, DEN, TS, AB, JPL, JAB, JU and ALH conceived and participated in the design of the study. ALH, JU, JAB, JBR and JP carried out the clinical studies and collected the data. RN and CB were responsible for generation of experimental atmospheres and analysis of exposures. IS, SM, and RW were responsible for the quantitative analysis of polycyclic aromatic hydrocarbons. ALH, JU, JPL, ASSV and AL were responsible for data analysis and interpretation. ALH and NLM drafted the manuscript and all the authors were involved in critical review. All authors read and approved the final manuscript.

Acknowledgements

This work was funded by British Heart Foundation project (PG 11/27/24482) and programme (RG/10/9/28286) grants, by the Swedish Heat Lung Foundation, Västerbotten County, and by the Colt Foundation. NLM and DEN are supported by the British Heart Foundation (FS10/024/28266 and CH/09/002 respectively). We would like to thank the Annika Johansson and Frida Holmström at the Lungkliniken at University Hospital, Umeå for their invaluable assistance with these studies.

Author details

¹BHF Centre for Cardiovascular Science, University of Edinburgh, Edinburgh, UK. ²Department of Public Health and Clinical Medicine, Umeå University, Umeå, Sweden. ³ELEGI/Colt Laboratories, University of Edinburgh, Edinburgh, UK. ⁴Thermochemical Energy Conversion Laboratory, Umeå University, Umeå, Sweden. ⁵Edinburgh Heart Centre, Royal Infirmary of Edinburgh, Edinburgh, UK. ⁶Department of Analytical Chemistry, Stockholm University, Stockholm, Sweden.

Received: 11 August 2014 Accepted: 30 October 2014

Published online: 09 December 2014

References

- Kales SN, Soteriades ES, Christoudias SG, Christiani DC: **Firefighters and on-duty deaths from coronary heart disease: a case control study.** *Environ Health* 2003, **2**:14.
- Kales SN, Soteriades ES, Christophi CA, Christiani DC: **Emergency duties and deaths from heart disease among firefighters in the United States.** *N Engl J Med* 2007, **356**:1207–1215.
- Bolstad-Johnson DM, Burgess JL, Crutchfield CD, Stormont S, Gerkin R, Wilson JR: **Characterization of firefighter exposures during fire overhaul.** *AIHAJ* 2000, **61**:636–641.
- Hoek G, Brunekreef B, Goldbohm S, Fischer P, van den Brandt PA: **Association between mortality and indicators of traffic-related air pollution in the Netherlands: a cohort study.** *Lancet* 2002, **360**:1203–1209.
- Miller KA, Siscovick DS, Sheppard L, Shepherd K, Sullivan JH, Anderson GL, Kaufman JD: **Long-term exposure to air pollution and incidence of cardiovascular events in women.** *N Engl J Med* 2007, **356**:447–458.
- Peters A, von Klot S, Heier M, Trentinaglia I, Hormann A, Wichmann HE, Lowel H: **Exposure to traffic and the onset of myocardial infarction.** *N Engl J Med* 2004, **351**:1721–1730.
- Langrish JP, Bosson J, Unosson J, Muala A, Newby DE, Mills NL, Blomberg A, Sandstrom T: **Cardiovascular effects of particulate air pollution exposure: time course and underlying mechanisms.** *J Intern Med* 2012, **272**:224–239.
- Beelen R, Raaschou-Nielsen O, Stafoggia M, Andersen ZJ, Weinmayr G, Hoffmann B, Wolf K, Samoli E, Fischer P, Nieuwenhuijsen M, Vineis P, Xun WW, Katsouyanni K, Dimakopoulou K, Oudin A, Forsberg B, Modig L, Havulinna AS, Lanki T, Turunen A, Oftedal B, Nystad W, Nafstad P, De Faire U, Pedersen NL, Ostenson CG, Fratiglioni L, Penell J, Korek M, Pershagen G, et al: **Effects of long-term exposure to air pollution on natural-cause mortality: an analysis of 22 European cohorts within the multicentre ESCAPE project.** *Lancet* 2014, **383**:785–795.
- Mustafic H, Jabre P, Caussin C, Murad MH, Escolano S, Tafflet M, Perier MC, Marijon E, Verney D, Empana JP, Jouven X: **Main air pollutants and myocardial infarction: a systematic review and meta-analysis.** *JAMA* 2012, **307**:713–721.
- Cesaroni G, Forastiere F, Stafoggia M, Andersen ZJ, Badaloni C, Beelen R, Caracciolo B, de Faire U, Erbel R, Eriksen KT, Fratiglioni L, Galassi C, Hampel R, Heier M, Hennig F, Hilding A, Hoffmann B, Houthuijs D, Jockel KH, Korek M,

- Lanki T, Leander K, Magnusson PK, Migliore E, Ostenson CG, Overvad K, Pedersen NL JJP, Penell J, Pershagen G, et al: **Long term exposure to ambient air pollution and incidence of acute coronary events: prospective cohort study and meta-analysis in 11 European cohorts from the ESCAPE Project.** *BMJ* 2014, **348**:f7412.
11. Shah AS, Langrish JP, Nair H, McAllister DA, Hunter AL, Donaldson K, Newby DE, Mills NL: **Global association of air pollution and heart failure: a systematic review and meta-analysis.** *Lancet* 2013, **382**:1039–1048.
 12. Mills NL, Tornqvist H, Robinson SD, Gonzalez M, Darnley K, MacNee W, Boon NA, Donaldson K, Blomberg A, Sandstrom T, Newby DE: **Diesel exhaust inhalation causes vascular dysfunction and impaired endogenous fibrinolysis.** *Circulation* 2005, **112**:3930–3936.
 13. Lucking AJ, Lundback M, Mills NL, Faratian D, Barath SL, Pourazar J, Cassee FR, Donaldson K, Boon NA, Badimon JJ, Sandstrom T, Blomberg A, Newby DE: **Diesel exhaust inhalation increases thrombus formation in man.** *Eur Heart J* 2008, **29**:3043–3051.
 14. Unosson J, Blomberg A, Sandström T, Muala A, Boman C, Nyström R, Westerholm R, Mills N, Newby D, Langrish J, Bosson J: **Exposure to wood smoke increases arterial stiffness and decreases heart rate variability in humans.** *Part Fibre Toxicol* 2013, **10**:20.
 15. Londahl J, Pagels J, Boman C, Swietlicki E, Massling A, Rissler J, Blomberg A, Bohgard M, Sandstrom T: **Deposition of biomass combustion aerosol particles in the human respiratory tract.** *Inhal Toxicol* 2008, **20**:923–933.
 16. Lamberg HNK, Tissari J, Ruusunen J, Yli-Pirilä P, Sippula O, Tapanainen M, Jalava P, Makkonen U, Teinilä K, Saarnio K, Hillamo R, Hirvonen M, Jokiniemi J: **Physicochemical characterization of fine particles from small-scale wood combustion.** *Atmos Environ* 2011, **45**:7635–7643.
 17. Forchhammer L, Moller P, Riddervold IS, Bonlokke J, Massling A, Sigsgaard T, Loft S: **Controlled human wood smoke exposure: oxidative stress, inflammation and microvascular function.** *Part Fibre Toxicol* 2012, **9**:7.
 18. Swiston JR, Davidson W, Attridge S, Li GT, Brauer M, van Eeden SF: **Wood smoke exposure induces a pulmonary and systemic inflammatory response in firefighters.** *Eur Respir J* 2008, **32**:129–138.
 19. Adetona O, Zhang JJ, Hall DB, Wang JS, Vena JE, Naeher LP: **Occupational exposure to woodsmoke and oxidative stress in wildland firefighters.** *Sci Total Environ* 2013, **449**:269–275.
 20. Hejl AM, Adetona O, Diaz-Sanchez D, Carter JD, Commodore AA, Rathbun SL, Naeher LP: **Inflammatory effects of woodsmoke exposure among wildland firefighters working at prescribed burns at the Savannah River Site, SC.** *J Occup Environ Hyg* 2013, **10**:173–180.
 21. Morrison D, Rahman I, Lannan S, MacNee W: **Epithelial permeability, inflammation, and oxidant stress in the air spaces of smokers.** *Am J Respir Crit Care Med* 1999, **159**:473–479.
 22. Furchgott R, Jothianandan D: **Endothelium-dependent and -independent vasodilation involving cyclic GMP: relaxation induced by nitric oxide, carbon monoxide and light.** *Blood Vessels* 1991, **28**:52–61.
 23. Lucking AJ, Lundback M, Barath SL, Mills NL, Sidhu MK, Langrish JP, Boon NA, Pourazar J, Badimon JJ, Gerlofs-Nijland ME, Cassee FR, Boman C, Donaldson K, Sandstrom T, Newby DE, Blomberg A: **Particle traps prevent adverse vascular and prothrombotic effects of diesel engine exhaust inhalation in men.** *Circulation* 2011, **123**:1721–1728.
 24. Langrish JP, Lundback M, Barath S, Soderberg S, Mills NL, Newby DE, Sandstrom T, Blomberg A: **Exposure to nitrogen dioxide is not associated with vascular dysfunction in man.** *Inhal Toxicol* 2010, **22**:192–198.
 25. Nawrot TS, Perez L, Kunzli N, Munters E, Nemery B: **Public health importance of triggers of myocardial infarction: a comparative risk assessment.** *Lancet* 2011, **377**:732–740.
 26. Smith DL, Manning TS, Petruzzello SJ: **Effect of strenuous live-fire drills on cardiovascular and psychological responses of recruit firefighters.** *Ergonomics* 2001, **44**:244–254.
 27. Angerer P, Kadletz-Gebhardt S, Delius M, Raluca P, Nowak D: **Comparison of cardiocirculatory and thermal strain of male firefighters during fire suppression to exercise stress test and aerobic exercise testing.** *Am J Cardiol* 2008, **102**:1551–1556.
 28. Smith DL, Horn GP, Petruzzello SJ, Fahey G, Woods J, Fernhall B: **Clotting and fibrinolytic changes after firefighting activities.** *Med Sci Sports Exerc* 2014, **46**:448–454.
 29. Smith DL, Petruzzello SJ, Goldstein E, Ahmad U, Tangella K, Freund GG, Horn GP: **Effect of live-fire training drills on firefighters' platelet number and function.** *Prehospital Emerg Care* 2011, **15**:233–239.
 30. Mittleman MA, Maclure M, Tofler GH, Sherwood JB, Goldberg RJ, Muller JE: **Triggering of acute myocardial infarction by heavy physical exertion. Protection against triggering by regular exertion. Determinants of Myocardial Infarction Onset Study Investigators.** *New Engl J Med* 1993, **329**:1677–1683.
 31. Manning JE, Griggs TR: **Heart rates in fire fighters using light and heavy breathing equipment: similar near-maximal exertion in response to multiple work load conditions.** *J Occup Med* 1983, **25**:215–218.
 32. Sothmann MS, Saupe K, Jasenof D, Blaney J: **Heart rate response of firefighters to actual emergencies. Implications for cardiorespiratory fitness.** *J Occup Med* 1992, **34**:797–800.
 33. Del Sal M, Barbieri E, Garbati P, Sisti D, Rocchi MB, Stocchi V: **Physiologic responses of firefighter recruits during a supervised live-fire work performance test.** *J Strength Cond Res* 2009, **23**:2396–2404.
 34. Naeher LP, Brauer M, Lipsett M, Zelikoff JT, Simpson CD, Koenig JQ, Smith KR: **Woodsmoke health effects: a review.** *Inhal Toxicol* 2007, **19**:67–106.
 35. Tornqvist H, Mills NL, Gonzalez M, Miller MR, Robinson SD, Megson IL, Macnee W, Donaldson K, Soderberg S, Newby DE, Sandstrom T, Blomberg A: **Persistent endothelial dysfunction in humans after diesel exhaust inhalation.** *Am J Respir Crit Care Med* 2007, **176**:395–400.
 36. Brook RD, Bard RL, Morishita M, Dvonch JT, Wang L, Yang HY, Spino C, Mukherjee B, Kaplan MJ, Yalavarthi S, Oral EA, Ajluni N, Sun Q, Brook JR, Harkema J, Rajagopalan S: **Hemodynamic, autonomic, and vascular effects of exposure to coarse particulate matter air pollution from a rural location.** *Environ Health Perspect* 2014, **122**:624–630.
 37. Devlin RB, Ghio AJ, Kehrl H, Sanders G, Cascio W: **Elderly humans exposed to concentrated air pollution particles have decreased heart rate variability.** *Eur Respir J Suppl* 2003, **40**:76s–80s.
 38. Gold DR, Litonjua A, Schwartz J, Lovett E, Larson A, Nearing B, Allen G, Verrier M, Cherry R, Verrier R: **Ambient pollution and heart rate variability.** *Circulation* 2000, **101**:1267–1273.
 39. Pope CA 3rd, Verrier RL, Lovett EG, Larson AC, Raizenne ME, Kanner RE, Schwartz J, Villegas GM, Gold DR, Dockery DW: **Heart rate variability associated with particulate air pollution.** *Am Heart J* 1999, **138**:890–899.
 40. Sadiqsis I, Koegler JH, Benham T, Bergvall C, Westerholm R: **Particulate associated polycyclic aromatic hydrocarbon exhaust emissions from a portable power generator fueled with three different fuels—A comparison between petroleum diesel and two biodiesels.** *Fuel* 2014, **115**:573–580.
 41. Lundback M, Mills NL, Lucking A, Barath S, Donaldson K, Newby DE, Sandstrom T, Blomberg A: **Experimental exposure to diesel exhaust increases arterial stiffness in man.** *Part Fibre Toxicol* 2009, **6**:7.
 42. Mills NL, Tornqvist H, Gonzalez MC, Vink E, Robinson SD, Soderberg S, Boon NA, Donaldson K, Sandstrom T, Blomberg A, Newby DE: **Ischemic and thrombotic effects of dilute diesel-exhaust inhalation in men with coronary heart disease.** *N Engl J Med* 2007, **357**:1075–1082.
 43. Barath S, Mills NL, Lundback M, Tornqvist H, Lucking AJ, Langrish JP, Soderberg S, Boman C, Westerholm R, Londahl J, Donaldson K, Mudway IS, Sandstrom T, Newby DE, Blomberg A: **Impaired vascular function after exposure to diesel exhaust generated at urban transient running conditions.** *Part Fibre Toxicol* 2010, **7**:19.
 44. Langrish JP, Lundback M, Mills NL, Johnston NR, Webb DJ, Sandstrom T, Blomberg A, Newby DE: **Contribution of endothelin 1 to the vascular effects of diesel exhaust inhalation in humans.** *Hypertension* 2009, **54**:910–915.
 45. Langrish JP, Mills NL, Chan JK, Leseman DL, Aitken RJ, Fokkens PH, Cassee FR, Li J, Donaldson K, Newby DE, Jiang L: **Beneficial cardiovascular effects of reducing exposure to particulate air pollution with a simple facemask.** *Part Fibre Toxicol* 2009, **6**:8.
 46. Langrish JP, Unosson J, Bosson J, Barath S, Muala A, Blackwell S, Soderberg S, Pourazar J, Megson IL, Treweeke A, Sandstrom T, Newby DE, Blomberg A, Mills NL: **Altered nitric oxide bioavailability contributes to diesel exhaust inhalation-induced cardiovascular dysfunction in man.** *J Am Heart Assoc* 2013, **2**:e004309.
 47. Newby DE, Wright RA, Dawson P, Ludlam CA, Boon NA, Fox KA, Webb DJ: **The L-arginine/nitric oxide pathway contributes to the acute release of tissue plasminogen activator in vivo in man.** *Cardiovasc Res* 1998, **38**:485–492.
 48. Newby DE, Wright RA, Labinjoh C, Ludlam CA, Fox KA, Boon NA, Webb DJ: **Endothelial dysfunction, impaired endogenous fibrinolysis, and cigarette smoking: a mechanism for arterial thrombosis and myocardial infarction.** *Circulation* 1999, **99**:1411–1415.

49. Lucking AJ, Visvanathan A, Philippou H, Fraser S, Grant PJ, Connolly TM, Gardell SJ, Feuerstein GZ, Fox KA, Booth NA, Newby DE: **Effect of the small molecule plasminogen activator inhibitor-1 (PAI-1) inhibitor, PAI-749, in clinical models of fibrinolysis.** *J Thromb Haemost* 2010, **8**:1333–1339.
50. Leonard SS, Castranova V, Chen BT, Schwegler-Berry D, Hoover M, Piacitelli C, Gaughan DM: **Particle size-dependent radical generation from wildland fire smoke.** *Toxicology* 2007, **236**:103–113.
51. Albalak R, Bruce N, McCracken JP, Smith KR, De Gallardo T: **Indoor respirable particulate matter concentrations from an open fire, improved cookstove, and LPG/open fire combination in a rural Guatemalan community.** *Environ Sci Technol* 2001, **35**:2650–2655.
52. Masala S, Ahmed T, Bergvall C, Westerholm R: **Improved efficiency of extraction of polycyclic aromatic hydrocarbons (PAHs) from the National Institute of Standards and Technology (NIST) Standard Reference Material Diesel Particulate Matter (SRM 2975) using accelerated solvent extraction.** *Anal Bioanal Chem* 2011, **401**:3305–3315.
53. Masala S, Rannug U, Westerholm R: **Pressurized liquid extraction as an alternative to the Soxhlet extraction procedure stated in the US EPA method TO-13A for the recovery of polycyclic aromatic hydrocarbons adsorbed on polyurethane foam plugs.** *Anal Methods* 2014, **6**:8420–8425.
54. Christensen A, Ostman C, Westerholm R: **Ultrasound-assisted extraction and on-line LC-GC-MS for determination of polycyclic aromatic hydrocarbons (PAH) in urban dust and diesel particulate matter.** *Anal Bioanal Chem* 2005, **381**:1206–1216.
55. Dikalov S, Skatchkov M, Bassege E: **Quantification of peroxynitrite, superoxide, and peroxy radicals by a new spin trap hydroxylamine 1-hydroxy-2,2,6,6-tetramethyl-4-oxo-piperidine.** *Biochem Biophys Res Commun* 1997, **230**:54–57.
56. Taylor EL, Rossi AG, Shaw CA, Dal Rio FP, Haslett C, Megson IL: **GEA 3162 decomposes to co-generate nitric oxide and superoxide and induces apoptosis in human neutrophils via a peroxynitrite-dependent mechanism.** *Br J Pharmacol* 2004, **143**:179–185.
57. Robinson SD, Ludlam CA, Boon NA, Newby DE: **Phosphodiesterase type 5 inhibition does not reverse endothelial dysfunction in patients with coronary heart disease.** *Heart* 2006, **92**:170–176.
58. Newby DE, Wright RA, Ludlam CA, Fox KA, Boon NA, Webb DJ: **An in vivo model for the assessment of acute fibrinolytic capacity of the endothelium.** *Thromb Haemost* 1997, **78**:1242–1248.
59. Harding SA, Sarma J, Din JN, Maciocia PM, Newby DE, Fox KA: **Clopidogrel reduces platelet-leucocyte aggregation, monocyte activation and RANTES secretion in type 2 diabetes mellitus.** *Heart* 2006, **92**:1335–1337.

Submit your next manuscript to BioMed Central and take full advantage of:

- Convenient online submission
- Thorough peer review
- No space constraints or color figure charges
- Immediate publication on acceptance
- Inclusion in PubMed, CAS, Scopus and Google Scholar
- Research which is freely available for redistribution

Submit your manuscript at
www.biomedcentral.com/submit

