

1-25-2002

UA1B1/7 South Regional Postsecondary Education Center Dedication

WKU Office of Event Planning

Follow this and additional works at: http://digitalcommons.wku.edu/dlsc_ua_records



Part of the [Higher Education Administration Commons](#), [Public Relations and Advertising Commons](#), [Social History Commons](#), and the [Sociology Commons](#)

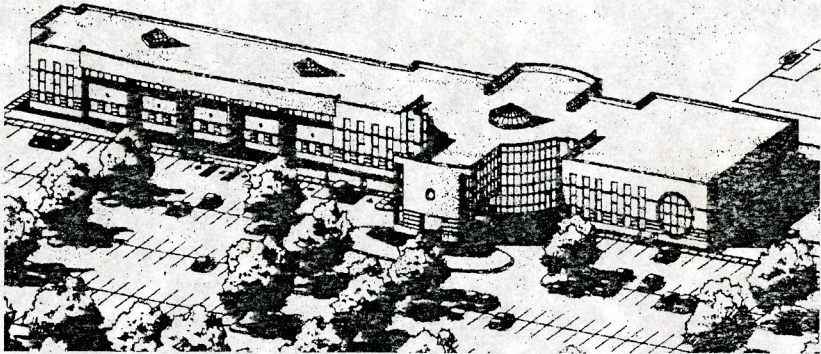
Recommended Citation

WKU Office of Event Planning, "UA1B1/7 South Regional Postsecondary Education Center Dedication" (2002). *WKU Archives Records*. Paper 4747.

http://digitalcommons.wku.edu/dlsc_ua_records/4747

This Other is brought to you for free and open access by TopSCHOLAR®. It has been accepted for inclusion in WKU Archives Records by an authorized administrator of TopSCHOLAR®. For more information, please contact todd.seguin@wku.edu.

*South Regional
Postsecondary
Education Center*



*Dedication
Ceremony*

*January 25, 2002
Glasgow, Kentucky*

Dedication Program

Welcome & Introduction of Special Guests	Kristen Bale Chair, WKU Board of Regents
Greetings from City of Glasgow	Charles Honeycutt Mayor, City of Glasgow
Greetings from Barren County	Freddy Travis Judge Executive, Barren County Chair, WKU-Glasgow Board of Advisors
Comments from Kentucky Community & Technical College System	Dr. Michael B. McCall President, KCTCS
Comments from WKU-Glasgow	Dr. Juanita Bayless Director, WKU-Glasgow Campus
Comments from WKU	Dr. Gary Ransdell President, WKU
Comments from Commonwealth of Kentucky	Governor Paul Patton House Speaker Jody Richards Senator Richie Sanders Representative Stephen Nunn
Special Presentation	Dr. Gary Ransdell Ribbon-Cutting

Reception & Tours to follow

SOUTH REGIONAL POSTSECONDARY EDUCATION CENTER

The South Regional Postsecondary Education Center is designed to provide a seamless educational system to postsecondary students in the Glasgow area. It is a joint enterprise between Western Kentucky University, which operates the WKU-Glasgow campus, and the Kentucky Community and Technical College System, which operates the Glasgow Campus of Bowling Green Technical College.

The Glasgow center is the first of five centers authorized and funded by the Kentucky General Assembly. The other centers -- all collaborative efforts between KCTCS and a comprehensive state university, are located in Elizabethtown (WKU), London/Corbin (Eastern Kentucky University), Hopkinsville (Murray State University) and Prestonsburg (Morehead State University).

Glasgow's two-story, \$9 million facility is located on a 30-acre site next to Barren County High School. The building has a central atrium and tower and all common areas are located in the central core with classrooms occupying both wings. The layout of the center and the site is designed for future expansion.

The center houses the WKU Glasgow campus as well as technology classrooms which are operated by Kentucky Advanced Technology Institute along with a library, bookstore, lounge, admissions and administrative areas.

Nolan & Nolan, Inc.
Architects & Engineers
Louisville, Kentucky



WESTERN KENTUCKY UNIVERSITY

Program produced by Office of Event Planning