

1937

Not to be Opened Until the Year 8113

Time Wide World Photos

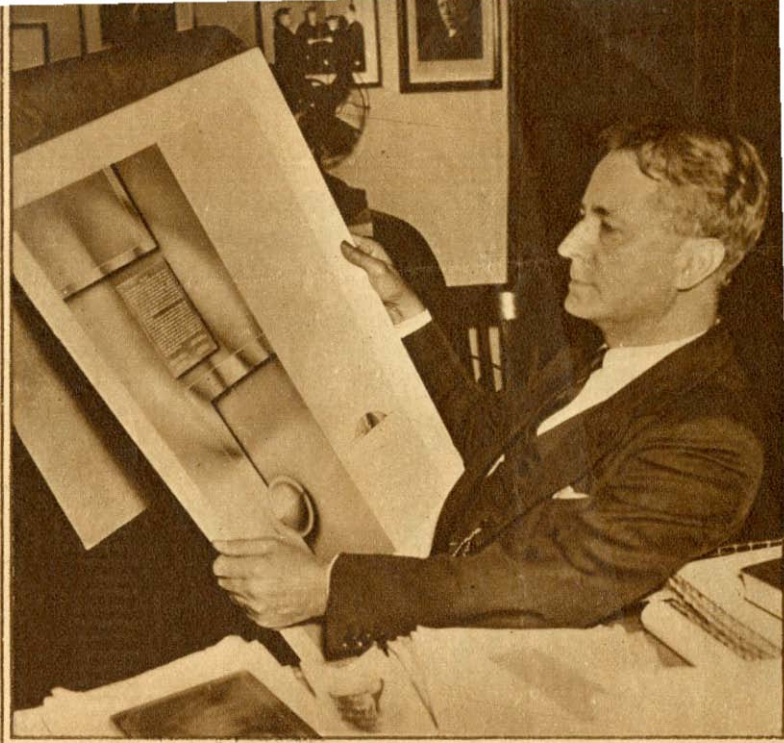
Follow this and additional works at: http://digitalcommons.wku.edu/exhibit_2015

 Part of the [Higher Education Administration Commons](#), [History Commons](#), [Journalism Studies Commons](#), and the [Photography Commons](#)

Recommended Citation

Time Wide World Photos, "Not to be Opened Until the Year 8113" (1937). *2015: Cherry Statue Time Capsule*. Book 43.
http://digitalcommons.wku.edu/exhibit_2015/43

This Book is brought to you for free and open access by TopSCHOLAR®. It has been accepted for inclusion in 2015: Cherry Statue Time Capsule by an authorized administrator of TopSCHOLAR®. For more information, please contact connie.foster@wku.edu.



"NOT TO BE OPENED UNTIL THE YEAR 8113."

Dr. Thornwell Jacobs, president of Oglethorpe University, Atlanta, Ga., studies the plans for the steel doors of the "Crypt of Civilization," in which will be stored records of life today. Motion picture films, newspapers, records of music and familiar objects like chewing gum and canned peaches will be sealed in the vault below the university library as a record for scientists more than 6,000 years hence.

(Times Wide World Photos.)