

12-8-1973

UA19/17/1/4 Football Program - WKU vs Grambling College

Lions Club of Baton Rouge

Follow this and additional works at: http://digitalcommons.wku.edu/dlsc_ua_records

Recommended Citation

Lions Club of Baton Rouge, "UA19/17/1/4 Football Program - WKU vs Grambling College" (1973). *WKU Archives Records*. Paper 847.
http://digitalcommons.wku.edu/dlsc_ua_records/847

This Other is brought to you for free and open access by TopSCHOLAR[®]. It has been accepted for inclusion in WKU Archives Records by an authorized administrator of TopSCHOLAR[®]. For more information, please contact topscholar@wku.edu.



THE NATIONAL COLLEGIATE ATHLETIC ASSOCIATION

IN COOPERATION WITH



THE DOWNTOWN LIONS CLUB OF BATON ROUGE

PRESENTS:

MEMORIAL STADIUM
BATON ROUGE, LA.
SATURDAY,
DECEMBER 8, 1973

OFFICIAL PROGRAM
FIFTY CENTS

THE GRANTLAND RICE BOWL

... that children may see and walk



**GRAMBLING COLLEGE VS.
WESTERN KENTUCKY UNIV.**

GRANTLAND RICE

The Man described as "a Saint with a racing form under one arm" was one of the most astute observers of athletics the world has known. While accruing his knowledge of athletics he not only became America's most famous sports writer but also the most revered of his or any time.



Henry Grantland Rice was born in Murfreesboro, Tennessee, on Nov. 1, 1880. Active in sports from the time "a football, a baseball, and a bat landed under the Christmas tree" when he was seven years old, Grant pursued athletics at Vanderbilt University. He graduated Phi Beta Kappa from Vanderbilt in 1901 after majoring in "Latin, Greek, baseball and football in that order." After a brief stint in semi-pro baseball Granny landed a job as "Sports Editor" of the *Nashville Daily News*, a job which included reporting society balls, Capitol Hill, the produce market and the customs house, all for five dollars a week. It was in 1912 while he was with the *New York Evening Mail* that he began his syndicated column "Sportlight." Sports reporting brought close personal friendship with such luminaries as Bobby Jones, Ty Cobb, Jesse Owens, Babe Ruth and many others.

Grantland Rice died suddenly on July 13, 1954 at the age of 73; he was working at his typewriter at the time. The poet laureate of sport left an insight to his character when, many years earlier, he wrote:

*When the One Great Scorer comes
To mark against your name
He writes—not that you won or lost—
But how you played the game.*

The Grantland Rice Bowl was sanctioned by the N.C.A.A. as the Mideast College Division championship. In the inaugural game of 1964 in Murfreesboro, Tenn., Middle Tennessee State of the Ohio Valley Conference defeated Muskingum 20-0.

Following the 1968 contest the game was relocated to Baton Rouge because of the frequently inclement December weather of Tennessee.



The trophies above are presented to the participants in the annual Grantland Rice Bowl

BATON ROUGE

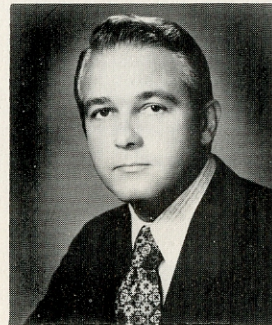
A tall red cypress stripped of its bark once stood on the present site of Louisiana's Old State Capitol. It marked the boundary between the hunting grounds of the Houma and Bayou Goula Indians. The early French explorers gave the tree a name, "le baton rouge" (The Red Stick).

Baton Rouge was founded by the French in 1719 on the first high land the voyageurs found during the exploration of the Mississippi River. The town of Baton Rouge was incorporated in 1817. Seven governments have held sway over Baton Rouge including France, England, Spain, Louisiana, the Florida Republic, the Confederate States and the United States.

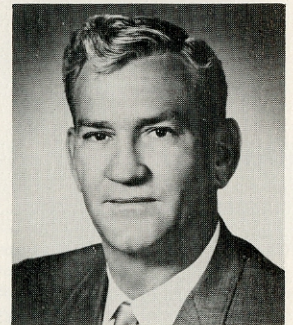
At the turn of the century the town began to develop industrially because of its strategic location on the first bluff along the Mississippi River north of the Gulf of Mexico. Baton Rouge—Louisiana's Capital City—is now 38.9 square miles in size with some 177,000 people. Parish (county) population is approximately 280,000.

Baton Rouge is the center of the chemical industry in the South. The original production of rubber from petroleum was started in Baton Rouge in the early 30's and the major industrial development has been interrelated with petroleum and chemicals.

There are 150 industries of various kinds in the city, giving employment to over 18,500 persons with an annual payroll exceeding \$120 million.



Hon. Edwin Edwards
Governor
State of Louisiana



W. W. Dumas
Mayor-President
Baton Rouge, La.

PUNT PASS AND KICK CONTEST

Awards and Donors are:

1ST PLACE
\$50 GIFT CERTIFICATE

2ND PLACE
\$25 GIFT CERTIFICATE

Goudchaux's
Wilson's Jewelers
Holsum Bakery
Corporate Square, Inc.

Cardinal Paint & Decorator Center
McDonald's Hamburgers
Denny Braud Sporting Goods

Assistants in Conducting Punt, Pass and Kick Contest

POLICE COMMUNITY SERVICES GROUP

Lt. Roger Melancon
Sgt. V. Breau
Officer Sid Newman
Officer Paul Allen
Ledoux Chastant, Jr.

THE DOWNTOWN LIONS



The Lions Club of Baton Rouge (Downtown) was organized in September of 1927. There were 30 Charter Members and the first meeting was held on September 23, 1927. The charter was given by District Governor Harry L. Viser of the Shreveport Lions Club at a Charter-Night Dinner Dance held at the Westdale Country Club on Tuesday evening, November 8, 1927, and was received on behalf of this Club by Lion Warren O. Watson, who was the first president of the Club.

For forty-three years, more than a generation, our Club has been writing in letters of gold the pages of this community history. This Club has accomplished its goal with the ease that only close cooperation and fellowship can generate. Yet having accomplished successfully, meant only a challenge for more and larger projects, and not the privilege of sitting back in admiration of our laurels. The first year the Club was organized the calendar was filled with work; and in each succeeding year the Secretary's report grew, until several volumes would be required to record in detail the work done and there are not enough books to hold the words expressing the joy, comfort, and new attitudes given, and in some cases, new life.

The Club's activities across the years have been in the realm of service to others. Each year the Club purchases eye glasses for needy persons and since the formation of the Club, many hundreds of such purchases have been made. One of the large contributions each year that the Club provides is to the Lions League for Crippled Children's Camp. Since 1958, the Club has contributed more than eighteen thousand dollars to this project. The Camp, located near Leesville, Louisiana, provides two weeks of fun and recreation for children who are unable to attend regular camping sessions otherwise. Approximately three hundred children are accommodated each year by this facility.

The members of the Downtown Lions Club are very pleased and proud of our Club; to uphold the traditions, the ethics, and the spirit of Lionism in our work, which is to serve without expectation of reward or remuneration; to make this world a better place in which to live and to help those who are less fortunate than we. It's great to be a "Lion" and, particularly, to be a member of the Downtown Lions Club.

BOWL BOOSTERS

FOOTBALL TEAM

Baton Rouge High
Broadmoor High
Brusly High
Capitol High
Catholic High
Central High
East Ascension High
East Ascension Jr. High
Episcopal High
Glen Oaks High

SPONSOR

G. A. Talbert & Co. of La.
Capital Bldg. & Loan
Dow Chemical
Exxon
Reine Stationery
The Charles W. Hogg Co.
Allied Chemical
Rubicon Chemical
Bon Voyage International Travel Service
Union Federal

FOOTBALL TEAM

Istrouma High
Lee High
McKinley High
Plaquemine High
Redemptorist Sr. High
Scotlandville Sr. High
Tara High
Walker High
Woodlawn High

SPONSOR

Bellefont Motor Hotel
Piccadilly Cafeteria
American Bank & Trust
Citizens Bank & Trust
General Contractors
Louisiana National Bank
Ethyl Corporation
Associated Mechanical Contractors
Exxon

Group Sponsors

(Booster II Program)

Baker High

Baker Bank
Baker Athletic Booster Club
Bakerfield Electric
Blankenship Rexall Drug
Baker Lions Club
St. James Bank
H. Construction
Amato Refrigeration Co.

Lutcher Jr. High

Denham Springs High
White Castle High
Istrouma Band

Lutcher High

Buck's Tavern
Colonial Sugars
Russell Richard
Tony Milazzo

Denham Springs Lions Club
White Castle Lions Club
Holsum Bakery

BOWL CONTRIBUTORS

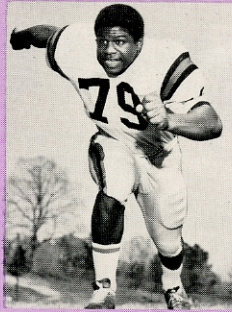
Dictaphone Corporation

Lanier Business Products

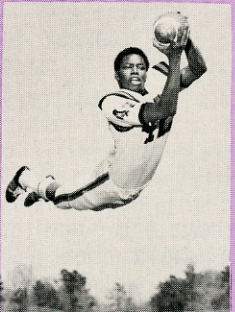
GRAMBLING Tigers



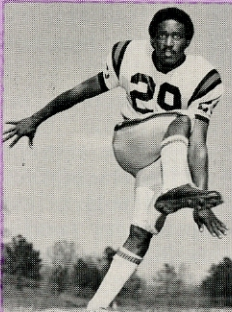
BATTLE, LB



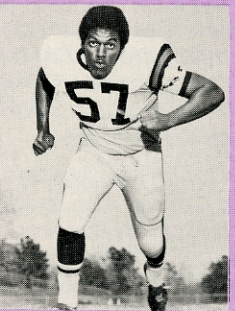
JOHNSON, DT



SCALES, SE



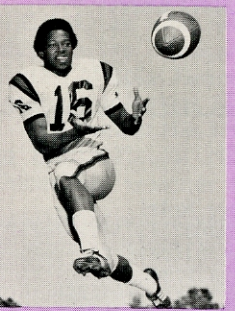
ZENO, DB



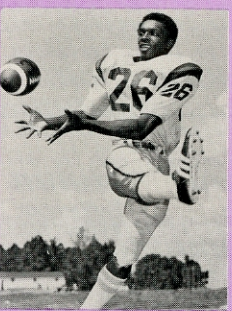
FAVORITE, OT



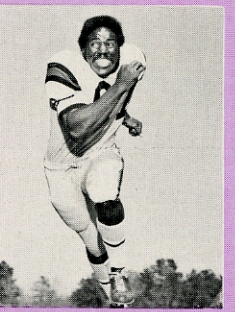
BIBBS, DE



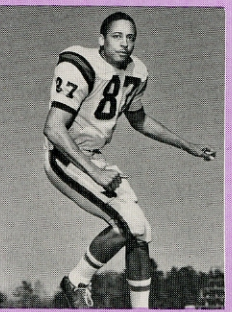
SAMS, WB



WHITE, WB



O'NEAL, DE



MAYFIELD, LB

PROBABLE STARTING LINE-UP

OFFENSE

NO.	NAME	POS.	HT.	WT.	CLASS
10	JOE COMEAUX	QB	6-4	196	JR.
26	SAMMIE WHITE	WB	6-2	190	SO.
45	JOHN MOORE	RB	6-0	191	SO.
31	RODNEY TUREAUD	31	6-3	218	JR.
42	DWIGHT SCALES	SE	6-3	192	SO.
76	LARRY FAVORITE	OT	6-7	263	SO.
60	ANDREW JACKSON	OG	6-2	244	JR.
59	JIMMY ROE	OC	6-3	254	SO.
69	SAMMIE COMBS	OG	6-1	239	SO.
70	BOBBY SIMON	OT	6-5	248	SO.
24	RON SINGLETON	TE	6-5	227	SO.

DEFENSE

NO.	NAME	POS.	HT.	WT.	CLASS
67	JESSE O'NEAL	DE	6-5	267	JR.
78	ROBERT BARBER	DT	6-5	243	JR.
79	GARY JOHNSON	DT	6-3	261	JR.
74	EZIL BIBBS	DE	6-4	256	JR.
53	CHARLES BATTLE	RLB	6-4	230	SR.
38	R. PENNYWELL	MLB	6-1	223	SO.
87	R. MAYFIELD	LLB	6-4	226	JR.
23	EUGENE WILLIAMS	SCB	6-1	174	SO.
33	RAYMOND GREEN	WCB	6-4	209	JR.
29	RODNEY ZENO	SS	6-1	184	JR.
25	JAMES HUNTER	WS	6-3	194	SO.

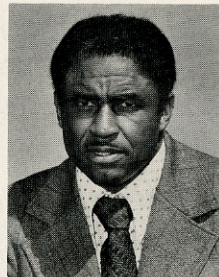
SPECIALISTS

KICKOFFS - FIELD GOALS 29, Rodney Zeno, 184, Jr.
 PUNTER 13, Keith Smyre, 174, Soph.
 PUNT & KICKOFF RETURNS . . . 25, James Hunter, 194, Soph.

SQUAD

80 BROWN, SE	67 O'NEAL, DE	25 HUNTER, DB
83 JONES, LB	68 ROBERSON, OG	26 WHITE, WB
87 MAYFIELD, LB	69 COMBS, OG	29 ZENO, DB
70 SIMON, OT	53 BATTLE, LB	31 TUREAUD, FB
74 BIBBS, DE	58 HICKS, OC	33 GREEN, DB
75 HUMPHREY, OG	59 ROE, CC	35 DIXON, FB
76 FAVORITE, OT	8 SCRUBBS, SE	38 PENNYWELL, LB
77 BATES, DT	10 COMEAUX, QB	40 GUIDRY, DB
78 BARBER, DT	13 SMYRE, K	42 SCALES, SE
79 JOHNSON, DT	16 SAMS, WB	45 MOORE, RB
60 JACKSON, OG	18 ZIMMERMAN, QB	46 BUSH, RB
61 BLUNT, LB	23 WILLIAMS, DD	47 MARTIN, FB
63 GILLIAM, OT	24 SINGLETON, TE	48 TURNER, FB

COACHES



Eddie Robinson
Athletic Director
Head Coach

DOUGLAS PORTER—Asst. Athletic Director
MELVIN LEE—Assistant Coach
FRED HOBDY—Assistant Coach
ERNEST STERLING—Assistant Coach
FRED COLLINS—Assistant Coach



WESTERN KENTUCKY Hilltoppers

PROBABLE STARTING LINE-UP

OFFENSE

NO.	NAME	POS.	HT.	WT.	CLASS
12	DENNIS TOMEK	QB	5-11	175	JR.
20	BOBBY POWELL	SE	6-2	190	SR.
22	PORTER WILLIAMS	SE	5-10	170	SR.
35	JIM IVEY	SB	6-0	190	SO.
41	VAN PITMAN	FB	6-1	208	JR.
43	CLAR. JACKSON	TB	5-9	175	SR.
50	DAVID NOLLNER	G	6-3	227	SR.
57	DAVID CARTER	C	6-3	225	FR.
61	JOHN MacLELLAN	OT	6-2	199	SR.
67	JOHN HUMPHREY	G	5-10	200	JR.
74	GREG LEWIS	OT	6-3	233	SO.

DEFENSE

NO.	NAME	POS.	HT.	WT.	CLASS
21	MIKE McCOY	DB	5-11	180	SR.
24	VIRGIL LIVERS	DB	5-10	174	JR.
25	CLAUDE SPILLMAN	LB	5-10	185	SR.
28	BOB MOREHEAD	DB	6-1	185	SR.
32	RICK GREEN	LB	6-2	205	SO.
34	FRANK YACOVINO	LB	5-11	205	JR.
52	CARL WILLIAMS	LB	6-0	208	SO.
77	DALE YOUNG	DT	6-0	240	SO.
78	JOHN BUSHONG	DT	6-5	240	JR.
80	LARRY DEWEESE	DE	6-2	222	SO.
84	KEITH TANDY	DE	6-3	195	FR.

SPECIALISTS

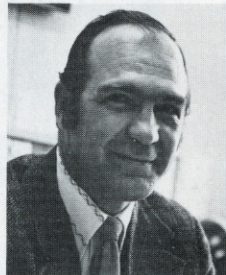
PLACEKICKER 11, Kyle Pierce, 200, Jr.
 PUNTS - PLACEKICKER 82, Charlie Johnson, 195, Soph.

SQUAD

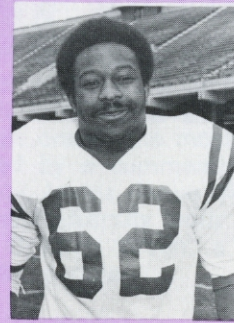
10 PECKENPAUGH, QB	35 IVEY, SB	61 MacLELLAN, OT
11 PIERCE, PK	40 MALONE, FB	62 HENDERSON, G
12 TOMEK, QB	41 PITMAN, FB	63 HAUN, OT
15 GROOMS, SpE	43 JACKSON, TB	67 HUMPHREY, G
16 SANDIDGE, DB	44 EMBREE, TB	71 SCHUSTER, DT
20 POWELL, SpE	50 NOLLNER, G	74 LEWIS, OT
21 McCOY, DB	51 HOLLERMAN, DE	77 YOUNG, DT
22 WILLIAMS, SpE	52 WILLIAMS, LB	78 BUSHONG, DT
24 LIVERS, DB	53 SMITH, C	80 DEWEESE, DE
25 SPILLMAN, DB	54 WALTON, LB	81 CARPENTER, DE
26 LEATHERS, DB	55 JECKER, LB	82 JOHNSON, P-PK
28 MOREHEAD, DB	57 CARTER, C	83 WAFZIG, SB
32 GREEN, LB	58 SKILES, LB	84 TANDY, DE
34 YACOVINO, BB		

COACHES

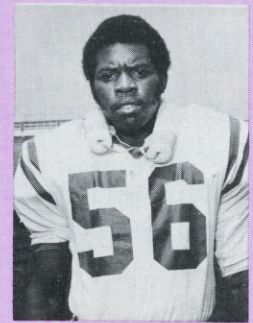
BUTCH GILBERT—Assistant Head Coach
LEE MURRAY—Defensive Coordinator
ROMEO CRENNEL—Defensive Line
SAM CLARK—Offensive Backs
BILL HAPE—Linebackers



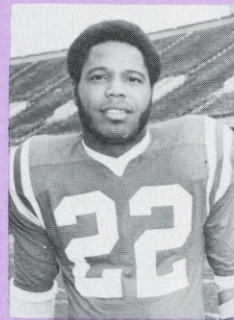
Jimmy Feix
Head Football Coach



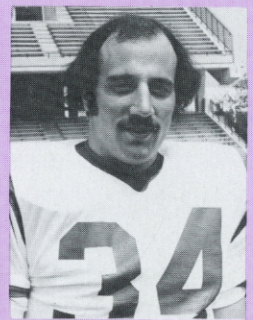
HENDERSON, G



HOLLERMAN, DE



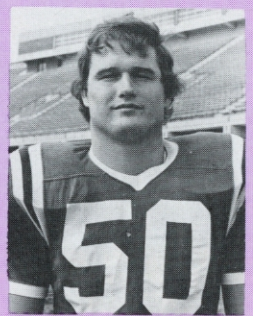
SPILLMAN, DB



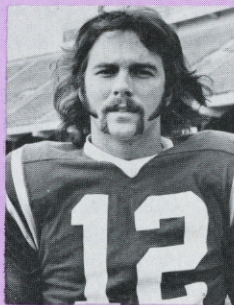
YACOVINO, DE



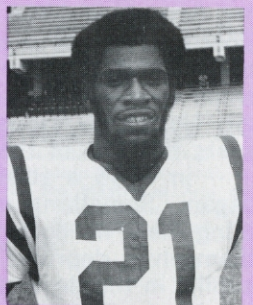
MOREHEAD, DB



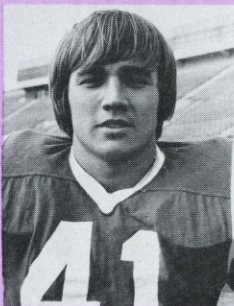
NOLLNER, G



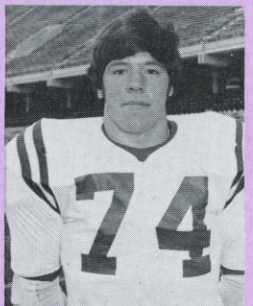
TOMEK, QB



McCOY, DB



PITMAN, FB



LEWIS, OT

GRAMBLING COLLEGE

LOCATION:

Grambling, Louisiana

ENROLLMENT:

4,000

COLORS:

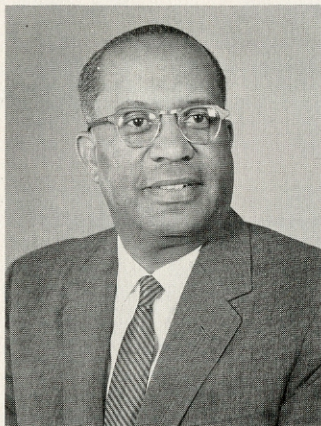
Black and Gold

TEAM NAME:

Tigers

ATHLETIC AFFILIATIONS:

N.C.A.A. and Southwestern Athletic Conference



R. W. E. Jones
President

Today the name Grambling College is a byword across the land, a shining symbol of pragmatic education, wholesome community service, and good intergroup relations.

Teaching people how to make a living, improve farm methods and health conditions, and to buy land and build homes were the first purposes of the school.

Between 1905 and 1918 the school was moved to its present site, meanwhile picking up

philanthropic support from Miss Fidelia Jewett, becoming a quasi-public institution, Lincoln Parish Training School, in 1918 under the Lincoln Parish School Board. In 1928 the school became a junior college under state auspices to train elementary teachers for small rural schools, going by the name Louisiana Negro Normal & Industrial Institute. For the next six years the fate of the school hung in the balance.

In 1936 a strange, quiet but relentless crusade began. Something new in teacher education. Something new in community relations. Train teachers, themselves deprived persons, to teach disadvantaged pupils, in the deprived circumstances they found them in. Above all, take education to the people where they are, education they could use. And to do that you had to get out there and find out—the "field service" concept in education.

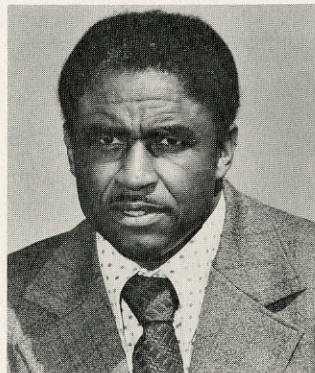
Between 1936 and 1940 the school moved from a two-year to a four-year program. And it kept moving, from the B. S. Degree in Elementary Education in 1944, to the B. S. degree in Secondary Education in 1953, to Liberal Arts degrees in 1959.

Today the school, nestled on 340 acres in the heart of the Town of Grambling with fifty permanent buildings including a stadium, large farm, spacious playgrounds and all other collegiate appointments, has a valuation in excess of \$32-million.

The College now has four divisions with numerous offerings in each: the Division of Education; the Division

of Applied Science & Technology; the Division of Liberal Arts, and the Division of General Studies.

Grambling College—About 4,000 students a year and over 15,000 graduates everywhere can tell you anytime what the applause and yells are all about.



Eddie Robinson
Head Coach and
Athletic Director

Coach Eddie Robinson is a man with immense dedication and drive. In football quarters around the country, he has been exalted for the enormous influence he has had on the game in a career spanning 31 years.

An affable, soft-spoken man with a pleasant demeanor, Robinson has been something of a miracle worker at Grambling, commanding leadership and winning consistently, while surviving the hazards of his profession in a silent, unassuming way.

Brought in to vitalize the football program in 1941, he went to work immediately building part-by-part on the road to respectability.

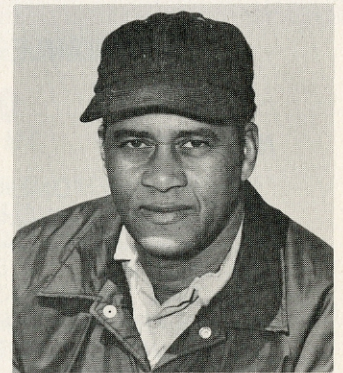
Today, Grambling is a household word in college and professional football circles.

It is almost impossible to watch a pro game on TV without a Grambling product in the lineup.

Widely respected as a humorist, Robinson has built a reputation as a fine public speaker. He holds membership in numerous professional organizations.

Last year he served as National President of NAIA.

A graduate of Leland College, Baker, La., he holds the M.A. degree from the University of Iowa.



Doug Porter
Assistant
Head Coach

Porter's area of responsibility is offense. He emphasizes quickness and maneuverability, based on perfection and simplicity, and usually gets all-out effort from the squad.

A former head coach at Mississippi Valley State, he believes in sacrifice and discipline. He has had extensive competitive and college coaching experience and has earned the respect reserved for top men in the football coaching fraternity.

In addition to serving as assistant AD, he makes valuable contributions as a recruiter and scout. He likes to handle tough assignments.



Adams Hall

WESTERN KENTUCKY

LOCATION:

Bowling Green, Kentucky

ENROLLMENT:

11,500

COLORS:

Red and White

TEAM NAME:

Hilltoppers

ATHLETIC AFFILIATIONS:

N.C.A.A. and Ohio Valley Conference



Dr. Dero G. Downing
President

In 1922, the school's name was changed to Western Kentucky State Normal School and Teachers College; in 1930 to Western Kentucky State Teachers College; in 1948 to Western Kentucky State College. In June, 1963, Western absorbed the Bowling Green College of Commerce and in 1964 the Bowling Green College of Commerce and the Graduate School were formed as two separate colleges within Western's structure.

Western was originally created for the sole purpose of training teachers for the elementary and secondary schools of Kentucky, but has steadily increased the scope of its academic programs to meet the expanding needs of its students. The University now offers six four-year undergraduate degrees, three two-year undergraduate degrees, and eleven graduate degrees, with course offerings leading to fifty majors and more than forty-five minors.

Western's enrollment this fall was 11,500 students—or about seven times the enrollment of only 15 years ago. The growth of the University's physical facilities, guided by a carefully organized long-range development plan, is also one of unparalleled magnitude in Western's history.

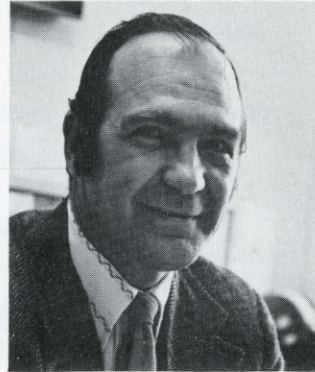
Western's physical plant consists of more than 60 buildings worth more than \$94 million. The new Ivan Wilson Center for Fine Arts was completed this year and a commercially developed housing project for married students is on the way to becoming a reality.

The University now has well over 21,500 alumni

Western Kentucky was established by an act of the Legislature of Kentucky in 1906. The act provided for the transferring of Southern Normal School, whose president was Dr. H. H. Cherry, to the State. Upon the transfer, he became the first president of Western Kentucky State Normal School. In 1911, the young state institution was moved from the site of Southern Normal School to College Heights, its present location.

who have received bachelor's degrees; more than 5,100 who hold the master's degree. Western's seven libraries contain over 500,000 volumes and more than 3,100 journal titles, as well as numerous other holdings.

Western's campus of more than 200 acres is recognized as one of the most beautiful in the nation. It is crowned by a commanding hill from which Hilltopper athletic teams derive their nickname. It affords a view of the University from almost any approach to the city of Bowling Green, a community of approximately 42,000 people.



John Oldham
Athletic Director

Johnny Oldham became Western Kentucky University's athletic director in 1971 after a 20-year coaching career, 16 of them as one of the nation's most astute and successful college basketball mentors.

An All-American under the late Coach E. A. Diddle at Western in 1949, Oldham moved into the coaching ranks at Western's College High School in 1951 after playing two seasons with the Ft. Wayne Pistons in the NBA. He went to Tennessee Tech as head coach in 1955, then succeeded Diddle as head coach of the Hilltoppers in 1964.

His coaching accomplishments read almost like a record book in themselves. His teams had records of 118-83 at Tech and 146-41 (.781) at Western. His squads won the Ohio Valley Conference championship three times at Tennessee Tech and four times at Western and he was voted the OVC's "Coach of the Year" award four times.

John brings the same dedication, sincerity and organizational talent to his post as athletic director that helped make him such an outstanding coach.

A native of Hartford, Kentucky, Oldham is married to the former Bobbie York of Harlan. They have two children, John Robert, 21, and Suzanne, 8.



Jimmy Feix
Head Football Coach

Jimmy Feix is in his sixth season as head coach of the Hilltoppers. His name has been synonymous with winning football at Western Kentucky almost continuously since he came to the campus as a freshman quarterback prospect in the fall of 1949.

As a player, he led Western to some of its greatest seasons ever. His senior year, 1952, he and the Hilltoppers hit the jackpot, tying for the Ohio Valley Conference championship and adding a Refrigerator Bowl win against Arkansas State to finish with a 9-1 record. In the process, Feix earned Little All-America honors for himself and a trial with the New York Giants of the National Football League. As a pro, Feix was impressive in early drills before a serious injury ended his career.

He returned to Western in 1957 after four years of service in the U.S. Air Force. He served as a graduate assistant coach that first year while completing the requirements for the Master of Arts degree, then became a full-time member of the Western staff the following year.



Dero Downing University Center

LIONS' OFFICERS & DIRECTORS FOR 1973-74

DOWNTOWN LIONS CLUB OF BATON ROUGE

President Thomas L. Holliday
 First Vice President C. B. Knight
 Second Vice President L. D. Roussel
 Third Vice President Verdell Blakly
 Secretary Leslie Grand

Treasurer Ellis Coutee
 Lion Tamer Lawrence DeJohn
 Tail Twister John Chapman
 Assistant Tail Twister Bob Mathews
 Immediate Past President Brooks C. Adams

BOARD MEMBERS

Bruce Minkoff Don Moseley
 Monroe Purvis Dale Ramirez

DOWNTOWN LIONS CHARITY SPORTS EVENTS, INC.

President J. B. Fry, Jr.
 President-Elect William S. McCutcheon
 First Vice President C. B. Knight
 Second Vice President Lawrence DeJohn
 Third Vice President Warren Waggenpack



J. B. Fry, Jr.

Fourth Vice President Ray Kron
 Fifth Vice President Bob Mathews
 Secretary and Legal Counsel Warren Mengis
 Treasurer Chuck Sklar

Herbert H. Doughty
 Monroe Purvis

Ellis Coutee
 Graham Stone

Ron Phillips
 Dale Ramirez

J. D. Roussel

SELECTION COMMITTEE

EDGAR A. SHERMAN, Chairman
 ROBERT A. LATOUR
 GEORGE A. HANSELL
 MARINO H. CASEM
 MILTON E. WEISBECKER
 REX R. GROSSART
 ANDREW BROWN, Commissioner
 Southwestern Athletic Conference
 ART GUEPE, Commissioner
 Ohio Valley Conference

NCAA OFFICIALS

WALTER BYERS, Executive Director
 ALAN J. CHAPMAN, President
 RICHARD P. KOENIG, Secretary-Treasurer

FIELD OFFICIALS

Referee—VINCENT BUCKLEY
 Umpire—MARV DURRENBERGER
 Linesman—LARRY COLVIN
 Field Judge—BOB JONES
 Back Judge—WILLIE SPENCER



Walter Byers
 Exec. Director
 NCAA

CHAIN CREW

G. A. "GOOBER" MORSE, Down Marker
 HAROLD NEWMAN, Chain Man
 PAUL MARTIN, Chain Man
 BILL GRUNEWALD, Clip Man for Chain
 GERALD PREJEAN, Scorekeeper

PRESS BOX

Lion's Pressbox Coordinator Billy Hardin
 John E. Ritter Paul P. Entriken
 Joe Macaluso
 Public Address Announcer: Sid Crocker

RED CROSS STATIONS

Mobile Unit at South End
 of Field by Score Board
 Red Cross Supervisor in charge
 Mr. Roger Morgan — Doctor on
 call at 50 yard line Dr. Joe A.
 Moreland.

PARTICIPANTS IN GRANTLAND RICE BOWL QUEEN CONTEST

NAME	CITY	REPRESENTING
MARTHA LEE CEFALU	Hammond	Agri-Dustrial
DEBORAH DENISE RAYBURN	Lafayette	Cattlemen's
NANCY BETH COLDIRON	Lake Charles	Cotton
PATTIE BROUSSARD	Breaux Bridge	Crawfish
GAY GREER	Stonewall	Egg
MARCIA ASHMORE	Denham Springs	Farm Bureau
BETTY JEAN CORKERN	Bogalusa	Paper
JANIE M. HORTON	Ruston	Peach
RENE' DUPELECHIN	Eunice	Rice
JUDY SOUTHERLAND	Natchitoches	Soybean
DONNA MARIE DIGIROLAMO	Norco	Swine
NANCY FUTRELL	Ruston	Watermelon
GAIL MARIE ST. AMAND	Baton Rouge	Yambilee
GAY CURRY, Louisiana Pecan Queen		

REIGNING QUEEN



NANCY DAVIES

PEE WEE FOOTBALL GAME

HARDING ELEMENTARY
 Principal: Nathan Mensia Coach: Godwyn Butler
 VS.

DALTON ELEMENTARY
 Principal: Bob Meador Coach: Dan Hopper

Trophies to be awarded were donated by
 Executive Insurance Agency

Tickets for the participating teams furnished by
 the Capital American Acceptance Corporation

OHIO VALLEY CONFERENCE

ART GUEDE—Commissioner

Morehead State Morehead, Kentucky
 Eastern Kentucky Richmond, Kentucky
 Murray State Murray, Kentucky
 Western Kentucky Bowling Green, Kentucky
 Austin Peay State Clarksville, Tennessee
 Middle Tennessee State ... Murfreesboro, Tennessee
 East Tennessee State Johnson City, Tennessee
 Tennessee Tech Cookeville, Tennessee