



### **Science Arts & Métiers (SAM)**

is an open access repository that collects the work of Arts et Métiers Institute of Technology researchers and makes it freely available over the web where possible.

This is an author-deposited version published in: <https://sam.ensam.eu>  
Handle ID: <http://hdl.handle.net/10985/9731>

#### **To cite this version :**

Adrien VAN GORP, Maxence BIGERELLE, Mohamed EL MANSORI, Patrick GHIDOSSI, Alain IOST - Effects of working parameters on the surface roughness in belt grinding process: the size-scale estimation influence - International Journal of Materials and Product Technology - Vol. 38, n°1, p.16-34 - 2010

Any correspondence concerning this service should be sent to the repository

Administrator : [archiveouverte@ensam.eu](mailto:archiveouverte@ensam.eu)



---

## **Effects of working parameters on the surface roughness in belt grinding process: the size-scale estimation influence**

---

**A. Van Gorp\***

Arts et Metiers ParisTech, CNRS, LMPGM,  
8, Boulevard Louis XIV,  
59046 Lille Cedex, France  
E-mail: [adrien.vangorp@ensam.eu](mailto:adrien.vangorp@ensam.eu)  
\*Corresponding author

**M. Bigerelle**

Laboratoire Roberval, UMR 6253,  
UTC/CNRS. UTC,  
Centre de Recherches de Royallieu BP20529,  
60205 Compiègne, France  
E-mail: [maxence.bigerelle@utc.fr](mailto:maxence.bigerelle@utc.fr)

**M. El Mansori and P. Ghidossi**

Arts et Metiers ParisTech, LMPF,  
Rue Saint Dominique BP 508 51006,  
Chalons-en-Champagne, France  
E-mail: [mohamed.elmansori@ensam.eu](mailto:mohamed.elmansori@ensam.eu)  
E-mail: [patrick.guidossi@ensam.eu](mailto:patrick.guidossi@ensam.eu)

**A. Iost**

Arts et Metiers ParisTech, CNRS, LMPGM,  
8, Boulevard Louis XIV,  
59046 Lille Cedex, France  
Fax: 33(0)3 20 62 29 57  
E-mail: [alain.iost@ensam.eu](mailto:alain.iost@ensam.eu)  
E-mail: [alain.iost@lille.ensam.fr](mailto:alain.iost@lille.ensam.fr)

**Abstract:** This paper outlines a new method to evaluate roughness parameters considering the scale used for their evaluation. Application is performed for grinding hardened steel with abrasive belts. Seven working variables are considered through a two-level experimental design. For all configurations, 30 surface profiles were recorded by tactile profilometry and rectified by a first degree B-spline fitting before calculating a set of current roughness parameters. The relevancy of each roughness parameter, to highlight process parameters influence, is then estimated for each scale by variance analysis. The results show that each influent input parameter is characterised by a related relevant evaluation length.

**Keywords:** roughness measurement; multi-scale analysis; variance analysis; belt grinding process.

**Reference** to this paper should be made as follows: Van Gorp, A., Bigerelle, M., El Mansori, M., Ghidossi, P. and Iost, A. (2010) 'Effects of working parameters on the surface roughness in belt grinding process: the size-scale estimation influence', *Int. J. Materials and Product Technology*, Vol. 38, No. 1, pp.16–34.

**Biographical notes:** A. Van Gorp is a Doctor in Materials and Surfaces Science, Engineer of ENSAM-ParisTech College (France). Field of interests: Tools processing, roughness, surfaces characterisation, polymer science.

M. Bigerelle is a Professor in Materials Science, Engineer in Computer Sciences, PhD in Mechanics and Material Sciences (1999), Medical Expert in Biomaterials at the University Hospital Centre of Lille, Capacitation of Research. Directorship in Physical Sciences (2002). Field of interests: surfaces and interfaces morphological characterisation, multi-scale modelling, fractal and chaos, biomaterials and nanostructures. Director Assistant of the Materials Research Group in the Laboratory Roberval, UMR 6253, UTC/CNRS, Centre de Recherches de Royallieu, BP20529, 60205 Compiègne France.

M. El Mansori is a Professor in the Department of Mechanical Engineering and Manufacturing at ENSAM-ParisTech in Chalons, France, where much of his research interests lies in the thermo-mechanical and tribological performances of both metallic and composites materials when using various manufacturing processes. He is actually, the training leader of the ENSAM-ParisTech Machining Network. He has worked as research member in the ERMES Group (Nancy France) for five years on tribological behavior of many materials especially in the field of electrical and magnetised contacts. He was also a research fellow at the Center for Advanced Friction Studies at the Southern Illinois University (USA).

P. Guidossi is a Doctor in the Department of Mechanical Engineering and Manufacturing at ENSAM-ParisTech in Chalons, France. He mainly works with M. El Mansori on composites materials tooling and on manufacturing process optimisations.

A. Iost is a Professor of Metallurgy and Materials Science at 'ENSAM Lille' and leader of the team "Characterisation and Properties of Perisurfaces" at the Physical Metallurgy and Material Engineering Laboratory. The main fields of interests are the mechanical and morphological characterisation of the surfaces and interfaces.

---

## 1 Introduction

Precision tooling by turning and rectification of working surfaces is one of the most expansive steps of the production of mechanical parts. As a consequence, these operations are completed by other techniques like the belt grinding. The purpose is to reduce, on the one hand, the geometric defaults of part surface and, on the other hand, the structure defaults. One of the major advantages of belt grinding is the low level

of mechanical strain and microscopic cracks density since the surface temperature does not rise during the process. Moreover, this technique is simpler and less expensive.

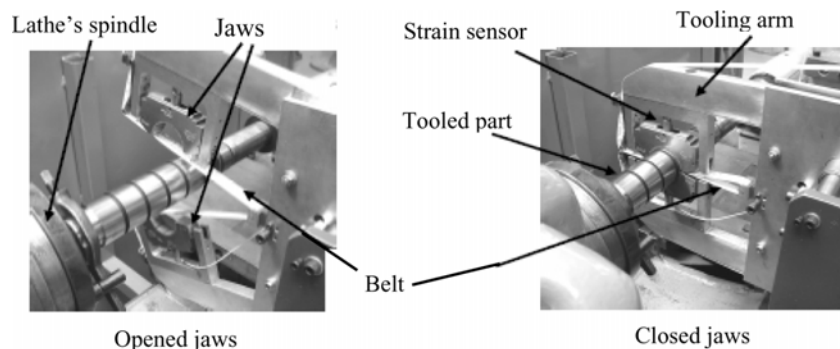
The problem is that knowledge by manufacturers of this process is quite poor, compelling them to optimise the process in relation to their own experience. Some authors have already proposed works to make a characterisation of belt grinding process used in simulation models (Jourani et al., 2005; Zhang et al., 2005) and process automation (Huang et al., 2002). Some of them used an energetic point of view (Ghidossi et al., 2005) and others studied the influence of the process on residual stresses (Axinte et al., 2005), but most of them analysed the relationships between process conditions and roughness of the resulting surfaces through experimental designs (Rech and Moisan, 2003; Khellouki et al., 2005). The purpose of this paper is to improve this last approach by considering all the main process parameters and a more advanced definition of the roughness parameters taking in consideration their evaluation length. Moreover, we describe an original method to calculate roughness parameters using a first degree B-spline function fitting related to the evaluation length. Then, the problem is “What is the most relevant roughness parameter and its evaluation length to describe the effect of each process parameter and their interactions?” To answer, a variance analysis technique is used. Results give further information to explain mechanisms induced by the belt grinding process.

## 2 Experimental considerations

### 2.1 Grinding belt device

The testing bench is composed of a Bader type grinding belt device set-up on a conventional lathe. Consequently, the system have a horizontal structure which is currently used for the grinding belt superfinishing of crankshafts. To be sure of the reproductibility of the process, five bearings are toolled. Their dimensions are 54.78 mm in diameter and 30 mm in width (Figure 1). The belt is 20 mm wide. The tooling movement is composed of a tangential relative part displacement due to its rotation with regard to the belt one and an oscillation of the tooling arm in the axial direction of the toolled part.

**Figure 1** The grinding belt device



## 2.2 Experiment design

The influence of the belt grinding process conditions on the resulting roughness is studied by a Tagushi experimental design. To begin with, 16 specimens were turned and rectified. All specimens are then tooled by the following process:

- *Hardness of contact wheel (polyurethane): 90 shores*
- *Belt grit size: 80  $\mu\text{m}$*
- *Contact pressure: 2 bars*
- *Workpiece rotation speed: 125 rpm*
- *Belt feed: 30 mm/mn*
- *Cycle time: 5 s*
- *Axial oscillation frequency: 10 Hz*
- *Axial oscillation amplitude:  $\pm 0.5$  mm*
- *Lubrication: CUT MAX H05<sup>TM</sup>.*

Then each specimen is machined using one of the process described in Table 1 with  $\pm 0.5$ -mm axial oscillation amplitude and with the same lubrication than in the first process.

**Table 1** Description of the Tagushi experimental design

<i>Specimen</i>	<i>Contact wheel hardness</i>	<i>Belt grit size (<math>\mu\text{m}</math>)</i>	<i>Contact pressure (bars)</i>	<i>Workpiece rotation speed (rpm)</i>	<i>Belt feed (mm/mn)</i>	<i>Cycle time (s)</i>	<i>Axial oscillation frequency (Hz)</i>
1	Hard	9	1	100	50	3	1.6
2	Hard	9	1	500	100	9	10
3	Hard	9	3	100	50	9	10
4	Hard	9	3	500	100	3	1.6
5	Hard	40	1	100	100	3	10
6	Hard	40	1	500	50	9	1.6
7	Hard	40	3	100	100	9	1.6
8	Hard	40	3	500	50	3	10
9	Soft	9	1	100	50	3	10
10	Soft	9	1	500	100	9	1.6
11	Soft	9	3	100	50	9	1.6
12	Soft	9	3	500	100	3	10
13	Soft	40	1	100	100	3	1.6
14	Soft	40	1	500	50	9	10
15	Soft	40	3	100	100	9	10
16	Soft	40	3	500	50	3	1.6

In this experimental design, the following interactions are considered:

- contact wheel hardness vs. belt grit size
- contact wheel hardness vs. contact pressure
- belt grit size vs. contact pressure.

### 2.3 *Roughness measurements*

For all the 16 specimens, 30 roughness profiles were recorded from tooled surfaces by a KLA-TENCOR™ P-10 profilometer with a 2- $\mu\text{m}$  tip radius. The scanning length and the sampling length were, respectively, 8 mm and 0.1  $\mu\text{m}$ . Before being treated, all profiles were previously rectified by third degree polynomial fitting.

### 2.4 *Treatments*

In the multi-scale approach, each profile is considered at the maximal scanning length that gives relevant correlation between the roughness parameters recorded and a physical process (here the experimental conditions corresponding to the two-level of the experimental design). This approach needs first a local rectification of the profile. Secondly, few roughness parameters are calculated on each part of the profile corresponding to the considered evaluation length. A precedent extensive study on the roughness parameter of machined surface shows that the following parameters are among the more extensively used:

- arithmetic and quadratic roughness (respectively noted,  $R_a$  and  $R_q$ )
- maximal amplitude of profile roughness (noted  $R_t$ )
- arithmetic and quadratic means of profile slopes (respectively noted,  $\delta a$  and  $\delta q$ )
- arithmetic and quadratic means of profile wavelength (respectively noted,  $\lambda a$  and  $\lambda q$ )
- mean width of profile peaks (noted  $S_m$ )
- fractal dimension calculated with the oscillation method (Tricot, 1993).

Next parameters calculation needs to split the profile in five same length sub-profiles.

- mean of maximum heights of the five sub-profiles roughness (noted  $R_{pm}$ )
- mean of minimum heights of the five sub-profiles roughness (noted  $R_v$ )
- mean of maximal amplitude of the five sub-profiles roughness (noted  $R_z$ ).

#### 2.4.1 *Local fitting*

This fitting aims to erase ‘the local shape’ of the profile at the considered evaluation length. For this purpose, the choice of a first degree B-spline function fitting was made for the reasons developed here as follows.

First degree B-spline functions are described by a series of control points  $\{P_0, P_1, \dots, P_k\}$  and a knot sequence  $\{u_0, u_1, \dots, u_k\}$ . In a parametric description, the knots values correspond to the parameter  $u$  of the B-spline and we have the relation (1).

$$P(u) = \sum_{i=0}^K P_i \cdot N_{i,1}(u) \quad (1)$$

where  $N_{i,n}(u)$  is a polynomial function with degree  $n$  defined by the series (Farin, 1996):

$$N_{k,n} = \frac{u - u_{k-1}}{u_{l+n-1} - u_{l-1}} N_{k,n-1}(u) + \frac{u_{l+n} - u}{u_{l+n} - u_l} N_{k-1,n-1}(u)$$

with  $N_{i,0}(u) = \begin{cases} 1 & \text{if } u \in [u_{i-1}, u_i] \\ 0 & \text{else} \end{cases}$ .

In our case, the  $u$  parameter was taken equal to the scanning length  $X$  that varies between 0 mm and 8 mm. The fitting consists in finding the ordinate of each control point  $P_i$  which minimises the quadratic distance  $\sum_{i=0}^p \|p_i - P(x_i)\|^2$  with  $p_i$  the ordinates of profile points. The formalism is the following:

The quadratic distance is minimised by the relation (2)

$$\sum_{i=0}^p \left( p_i - \sum_{j=0}^K P_j \cdot N_{j,1}(x_i) \right) \cdot N_{i,1}(x_i) = 0 \quad (2)$$

which corresponds to the following matrix representation:

$$M \cdot \vec{P} = \sum_{i=0}^p p_i \cdot N_{i,1}(x_i) = \vec{Y} \quad \text{with} \quad \vec{P} = [P_1, P_2, \dots, P_K]^T \quad (3)$$

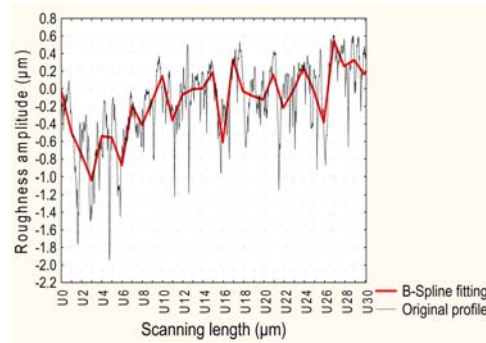
$$M = (m_{j,k}) \quad \text{and} \quad m_{j,k} = \sum_{i=0}^p N_{j,1}(x_i) \cdot N_{k,1}(x_i). \quad (4)$$

The series of control points is given by equation (5)

$$\vec{P} = M^{-1} \cdot \vec{Y}. \quad (5)$$

Figure 2 presents an example of profile fitted by a first degree B-spline. The B-spline function is not derivable at each control point so, consequently the rectified profile loses its  $C^1$  continuity. For this reason, control points were located at boundaries between each interval under study corresponding to the evaluation length. In contrast to the technique consisting in making a simple polynomial fitting on each interval under study, this method allows to keep the continuity of the global profile. It induces to consider not only the information contained in the current interval, but also the information contained in the two adjacent intervals. In another way, it is equivalent to take in account the heterogeneity of the shape along the profile during the calculation of local roughness parameters. By 'shape', we mean all the information located at a longer wavelength than the evaluation length.

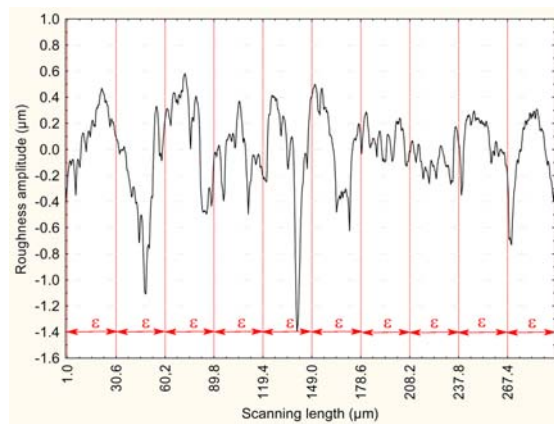
**Figure 2** Example of profile fit by a first degree B-spline with 30 control points (see online version for colours)



#### 2.4.2 Roughness parameters computation

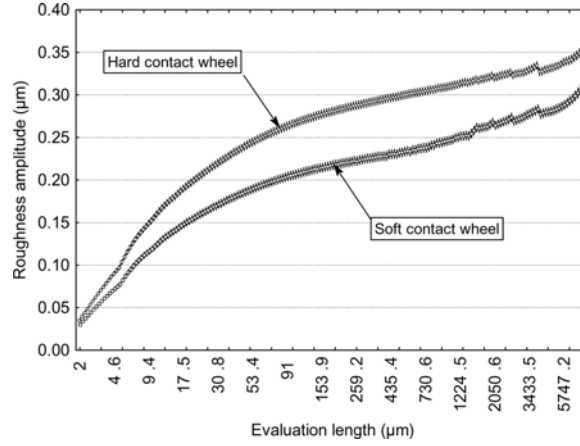
Each profile is first split into sub-profiles as long as the evaluation length as shown in Figure 3. Next, few current roughness parameters are calculated for each sub-profile. The parameter  $p_\varepsilon$ , related to the current evaluation length  $\varepsilon$ , is defined as the mean value of the parameter  $p_{\varepsilon,i}$  calculated on the  $i$ th sub-profile. This  $p_\varepsilon$  value is considered as a representation of the roughness parameter  $p$  along the profile for the evaluation length. In other terms, we consider the profile roughness as ergodic, i.e., the roughness is homogeneous along the profile at the current scale. This point constitutes a difference with regard to the wavelet method because we take in account any information about the roughness location. Rectification and roughness parameters calculation are repeated for a range of evaluation length from the profilometer tip radius ( $2\ \mu\text{m}$ ) to the scanning length ( $8\ \text{mm}$ ). The evolution of the arithmetic roughness parameter vs. the evaluation length and the contact wheel hardness is given in Figure 4. Figure 4 shows that the difference between values of arithmetic roughness mean corresponding to each level of contact wheel hardness varies with the evaluation length. The difference vanished at an evaluation length of about  $2\ \mu\text{m}$ . This scale corresponds to the tip radius and defines the value under which the recorded profile begins to be smooth. Consequently, lower scales are not relevant.

**Figure 3** Sub-profiles definition for an evaluation length  $\varepsilon$  (see online version for colours)





**Figure 4** Evolution of means of arithmetic roughness vs. the evaluation length for the two levels of contact wheel hardness



The main problem is now to select the most relevant evaluation length giving the highest roughness difference between groups of specimens tooled with the two contact wheel hardness.

#### 2.4.3 The variance analysis (ANOVA)

The most relevant scale is investigated by variance analysis, which is an implementation of the generalised linear model. The formalism is as follows:

Let

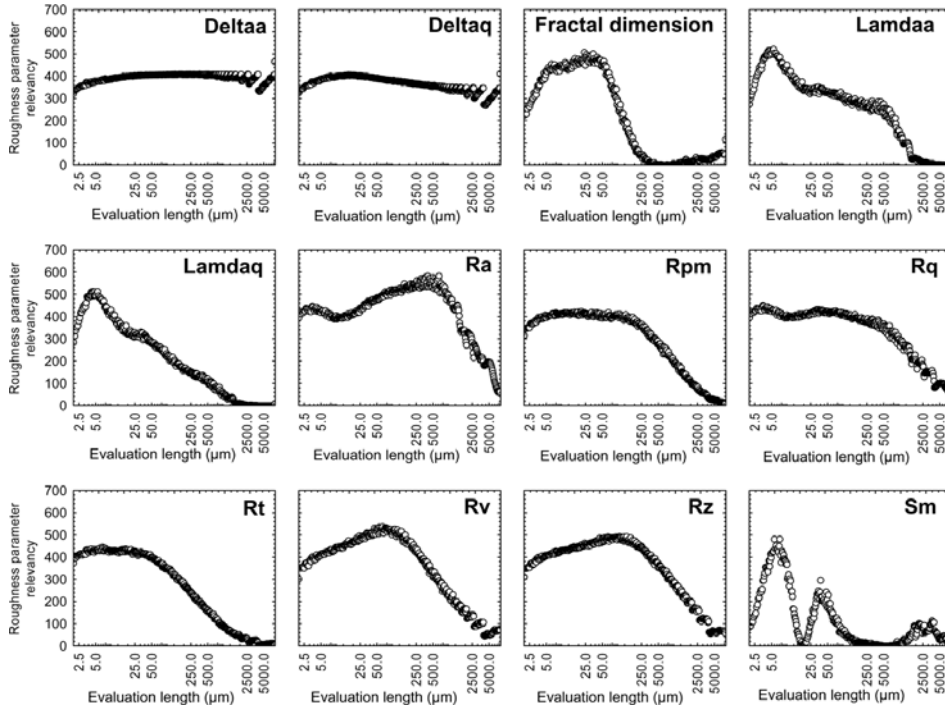
$$p_i(\varepsilon, k_1, k_2, \dots, k_p, n) = \alpha_0 + \sum_{j=1}^p \alpha_{j, k_j}(i, \varepsilon) + \sum_{j=1}^p \sum_{l=j+1}^p \beta_{j, k_j, l, k_l}(i, \varepsilon) + \zeta_{k_1, k_2, \dots, k_p, n}(i, \varepsilon) \quad (6)$$

where  $p_i(\varepsilon, k_1, k_2, \dots, k_p, n)$  is the roughness parameter value of the  $n$ th profile when the  $p$  process parameters are taken at levels  $k_1, k_2, \dots, k_p$ , for an  $\varepsilon$  evaluation length.  $\alpha_{j, k_j}(i, \varepsilon)$  is the influence on the roughness parameter value of the  $j$ th process parameter at  $k_j$  level and  $\beta_{j, k_j, l, k_l}(i, \varepsilon)$  is the influence of the interaction between both  $k_j$  and  $k_l$  process parameters.  $\zeta_{k_1, k_2, \dots, k_p, n}(i, \varepsilon)$  is a Gaussian noise with null value and  $\sigma$  standard deviation.

For each evaluation length, all of these influences are calculated by linear fitting. From them and for each process parameter and each interaction, between-group variability and within-group variability (corresponding to errors of estimation of the roughness parameter into each group) are calculated. The result noted  $F(p_i, \varepsilon)$  is the ratio produced by dividing the between-group variability by the within-group variability. In other words, this result compares the effect of each process parameter on the roughness parameter value with its estimation error. Consequently, for a given process parameter, a value of  $F(p_i, \varepsilon)$  more than one translates an relevancy of the roughness parameter  $p_i$  estimated at the evaluation length  $\varepsilon$  to represent effects of the considered process parameter. Higher the  $F(p_i, \varepsilon)$  value is, more relevant the parameter  $p_i$  estimated

at the scale  $\varepsilon$  is (see Benoist et al., 1995 for more details). In this way, we can compare not only the  $F(p_i, \varepsilon)$  values with regard to the evaluation length but also to the chosen roughness parameter. By looking for the highest  $F(p_i, \varepsilon)$  value, we can select the most pertinent roughness parameter and its evaluation length to describe the influence of the given process parameter. For the case of the hardness of contact wheel, Figure 5 presents the evolutions of  $F(p_i, \varepsilon)$  vs. the evaluation length for each roughness parameter calculated.

**Figure 5** Evolution of relevancy of each roughness parameter vs. the evaluation length to put in evidence effects of contact wheel hardness



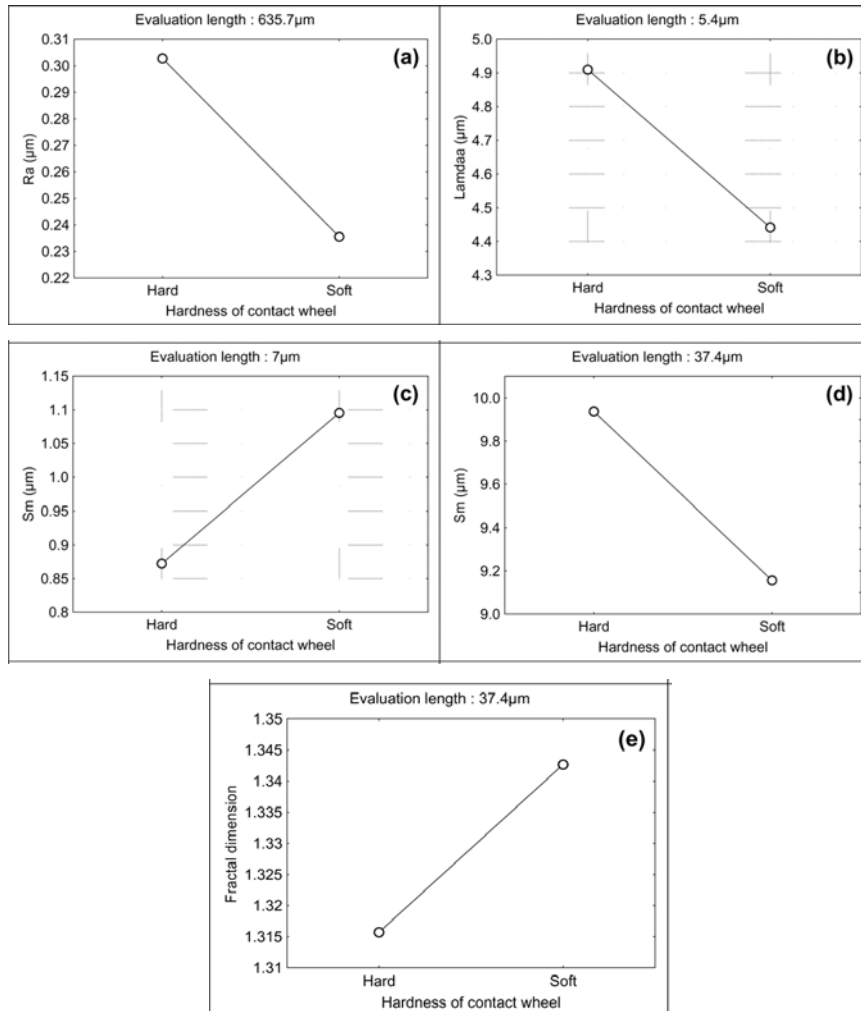
These graphs show that the range of relevant evaluation lengths depends on the type of roughness parameter. Only hybrid parameters ( $\delta a$  and  $\delta q$ ) are relevant at macroscopic scales corresponding to the scanning length (8 mm). Amplitude parameters are the most pertinent at mesoscopic scales (few hundreds of  $\mu\text{m}$ ) and frequency parameters ( $\lambda a$  and  $\lambda q$ ) at microscopic scale (few  $\mu\text{m}$ ). One can already conclude that the contact wheel hardness have two effects on amplitude and on frequency of roughness.

### 3 Results and discussion

#### 3.1 Effect of the contact wheel hardness

Figure 5 shows that the contact wheel hardness influences the amplitude and the frequency parameters at different scales. Evolutions of the most relevant roughness parameter of each type vs. the hardness of contact wheel are given in Figure 6.

**Figure 6** Effects of contact wheel hardness on the most relevant roughness parameters: (a) arithmetic roughness ( $R_a$ ); (b) arithmetic mean wavelength of profile ( $\lambda_a$ ); (c) mean width of peaks ( $S_m$ ) at a  $7\ \mu\text{m}$  evaluation length; (d)  $S_m$  at a  $37.4\ \mu\text{m}$  evaluation length and (e) fractal dimension at a  $37.4\ \mu\text{m}$  evaluation length



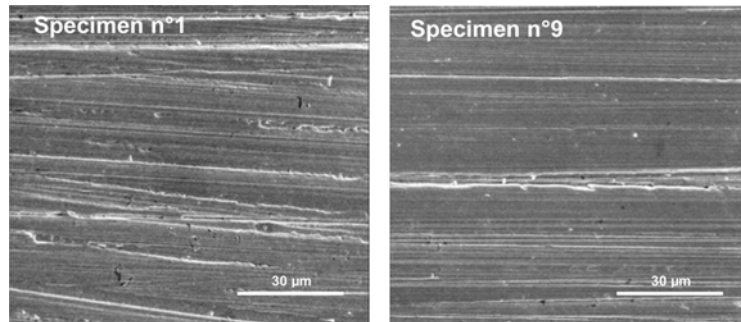
From these graphs, we can affirm that lower the hardness of contact wheel is:

- lower the roughness amplitude is
- lower the mean wavelength is
- lower the mean width of peaks is at a mesoscopic scale but higher it is at a microscopic scale
- higher is the fractal dimension.

These results can be explained by the capacity of the contact wheel to transmit contact pressure to each grain of the belt. Indeed, the soft contact wheel is much able to be deformed by the contact pressure to compensate grain size irregularities

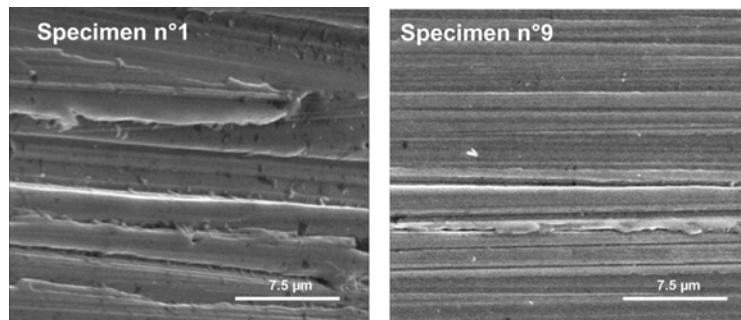
and surface topography. In this case, the pressure distribution on belt surface is more uniform, which induces a decrease of the local maximum pressure acting on the grains and as a consequence a lower penetration in tooled part decreases the roughness amplitude. The mean width of peaks is lower for an evaluation length about the grain size. Globally, the number of working grains rises that induces a more random profile and an increase of the fractal dimension as seen in Figure 7.

**Figure 7** SEM of specimens tooled with a hard contact wheel (on the left) and with a soft contact wheel (on the right) observed at a scale corresponding to the evaluation length of the fractal dimension



At the microscopic scale, the contact wheel hardness modifies the mean width of peaks ( $S_m$ ) differently with regards to the macroscopic scale. The soft contact wheel deformation induce the belt's one and the bottom of grooves can be tooled whether for high hardness, only the top of roughness is in contact with the belt. As a result, the mean wavelength is shorter as seen in Figure 8.

**Figure 8** SEM of specimens tooled with a hard contact wheel (on the left) and with a soft contact wheel (on the right) observed at the microscopic influence scale

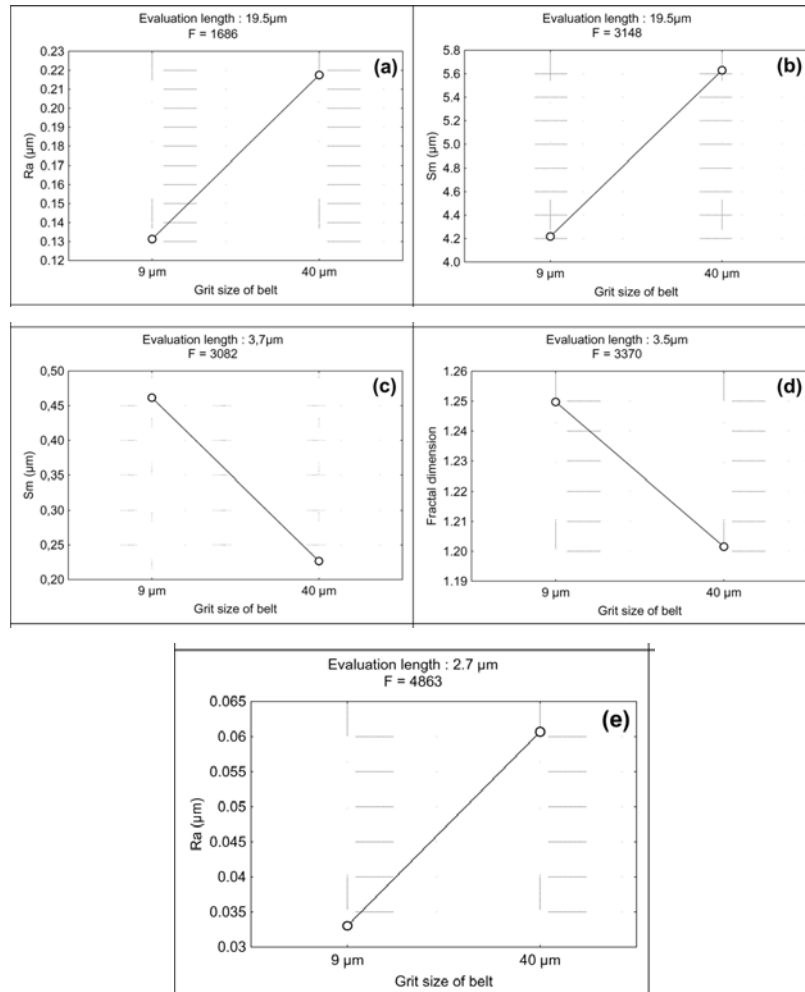


### 3.2 *Effect of the belt grit size*

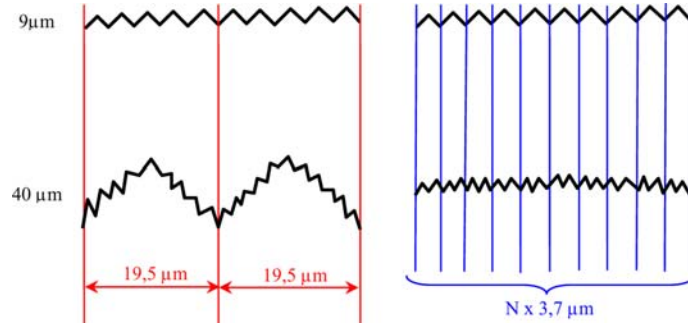
The method developed in the preceding section is now used to study the belt grit size effect. The results are shown in Figure 9, which represents different roughness parameters calculated at an evaluation length for which difference between the two grit sizes is maximum. Higher the grit size is, higher the arithmetic roughness is Figure 9(a). Moreover, the peaks mean width presents two relevant evaluation lengths: 3.7  $\mu\text{m}$  and 19.5  $\mu\text{m}$ . These scales might correspond to the mean width of scratches induced

by each grit size. This aspect can be modelled as follows: At a 19.5  $\mu\text{m}$  evaluation length, both sizes of scratches can be observed and the peaks mean width is higher for specimens tooled with a 40- $\mu\text{m}$  grit size (Figure 9(b)). Under this evaluation length, peaks of profiles extracted from 40- $\mu\text{m}$  grit size machined surfaces are more and more filtered by the local fitting. As a consequence, at the 3.7- $\mu\text{m}$  evaluation length, asperities of workpiece tooled with a 9- $\mu\text{m}$  grit size are preserved, while using a 40- $\mu\text{m}$  grit size profiles show only micro-scratches in the groves (Figures 10 and 11). With a 9- $\mu\text{m}$  grit size, the fractal dimension is higher, and the mean width of peaks is twice the value recorded for 40- $\mu\text{m}$  grit size condition (Figure 9(c) and (d)). This result is confirmed by scanning electron microscopy in Figure 11. This micro-roughness gives a less random aspect to the profile, which decreases the fractal dimension and increases the arithmetic roughness (Figure 9(e)).

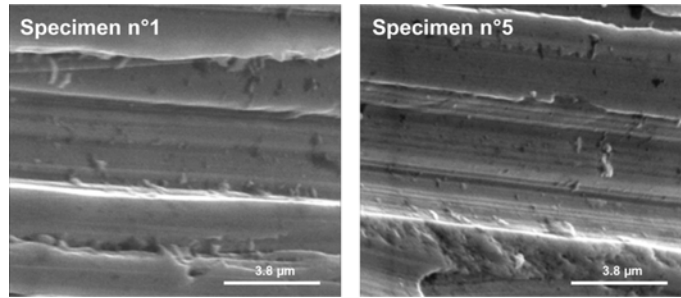
**Figure 9** Effects of belt grit size on the most relevant roughness parameters:  
 (a) arithmetic roughness at an evaluation length of 19.5  $\mu\text{m}$ ; (b) mean width of peaks at the same scale; (c) mean width of peaks at 3.7  $\mu\text{m}$ ; (d) fractal dimension at 3.5  $\mu\text{m}$  and (e) arithmetic roughness at 2.7  $\mu\text{m}$



**Figure 10** Model of effects of evaluation length on the roughness evolution vs. the belt grit size (see online version for colours)



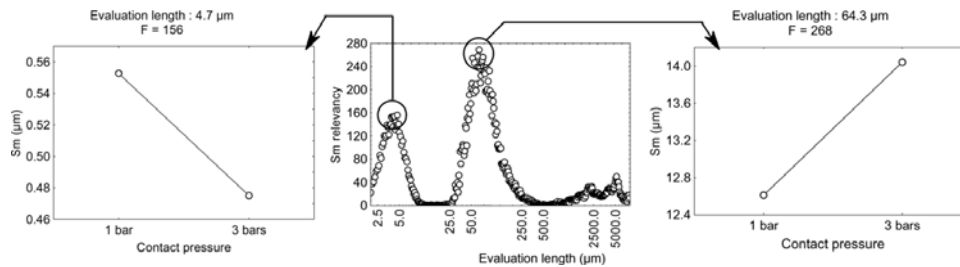
**Figure 11** SEM of grit size effects (9 μm on the left and 40 μm on the right) on roughness at microscopic scale



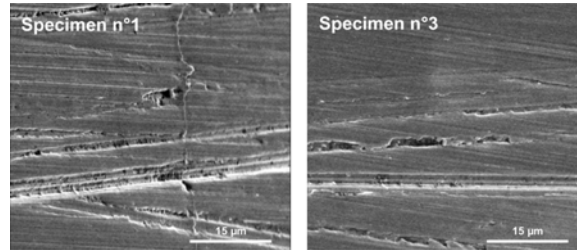
### 3.3 Effect of contact pressure

Figure 12 shows that higher the contact pressure is, higher is the mean width of peaks at a large evaluation length and lower it is at a microscopic scale. These effects might be interpreted like the ones of the contact wheel hardness. Indeed, higher the contact pressure, higher the grains penetration that increases the peaks width at large scale. From a microscopic point of view, pressure leads to damage tooling conditions. Indeed, instead of being ‘cut’ by the belt grains, the material is moved to fill the scratches as shown in Figure 13 and resulting peaks mean width is then lower.

**Figure 12** Effects of contact pressure on the peaks mean width:  $S_m$  relevancy vs. the evaluation length (centre) and evolutions for two most pertinent scales



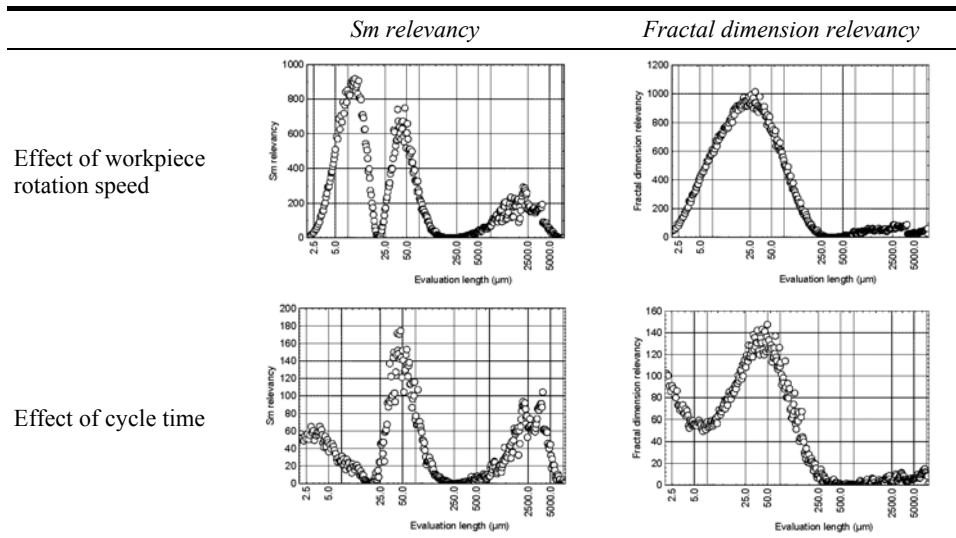
**Figure 13** SEM of effect of wrong cutting conditions induced by high contact pressure (on the right) with regards to low contact pressure (on the left)



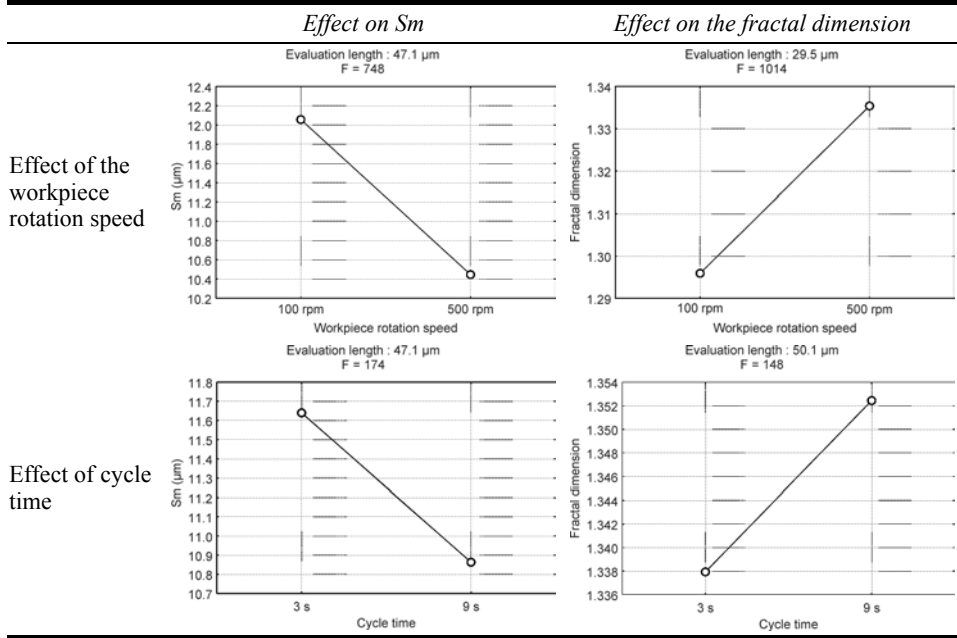
### 3.4 Influence of workpiece rotation speed and cycle time

These process parameters have been studied together because of their similar effects as shown in Table 2. Indeed, we observe that both of these process parameters have an effect on  $S_m$  and the fractal dimension quite at the same evaluation length (47.1  $\mu\text{m}$  for  $S_m$  and  $40 \mu\text{m} \pm 10 \mu\text{m}$  for the fractal dimension). Evolution graphs of these parameters are given in Table 3. Table 3 shows that higher the rotation speed or the cycle time is, lower the peaks mean width is and higher the fractal dimension is. In fact, in each case, the number of cut increases, which induce a more uniform roughness (see Figure 14). The surface seems to be random, the  $S_m$  decreases and the fractal dimension rises. In Table 2, the  $S_m$  relevancy curve relative to the rotation speed presents a second peak of pertinence for a 9.4  $\mu\text{m}$  evaluation length. The evolution of this parameter at this scale is given in Figure 15. Figure 15 shows that  $S_m$  increases at a 9.4- $\mu\text{m}$  evaluation length when rotation speed rises. Presumably, that can be explained by wrong ‘cutting’ conditions. With low-rotation speed, the materials have a tendency of being pushed instead of being cut and fill the scratches as shown in Figure 16. Rotation speed has the same effect as the contact pressure.

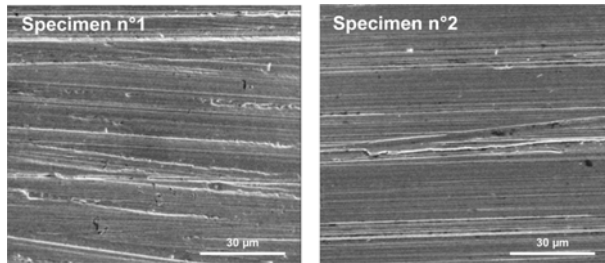
**Table 2** Comparison of workpiece rotation speed and cycle time effects on the most relevant roughness parameters



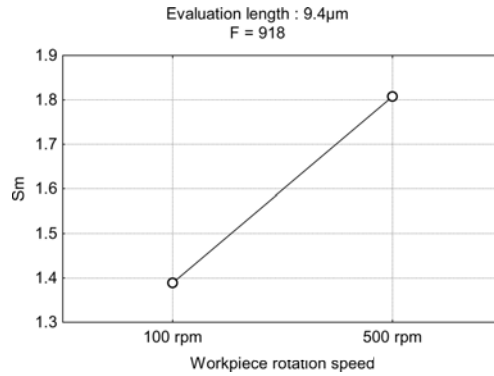
**Table 3** Evolutions of each relevant roughness parameter vs. the workpiece rotation speed and cycle time



**Figure 14** SEM of rotation speed effect (100 rpm on the left and 500 rpm on the right) and cycle time (3 s on the left and 9 s on the right). Magnitude corresponds to the evaluation length

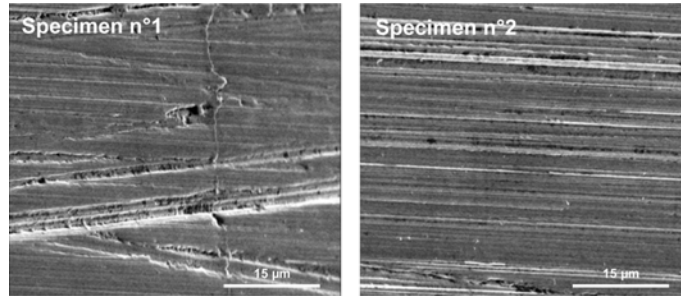


**Figure 15**  $S_m$  evolution vs. the workpiece rotation speed at a 9.4  $\mu\text{m}$  evaluation length





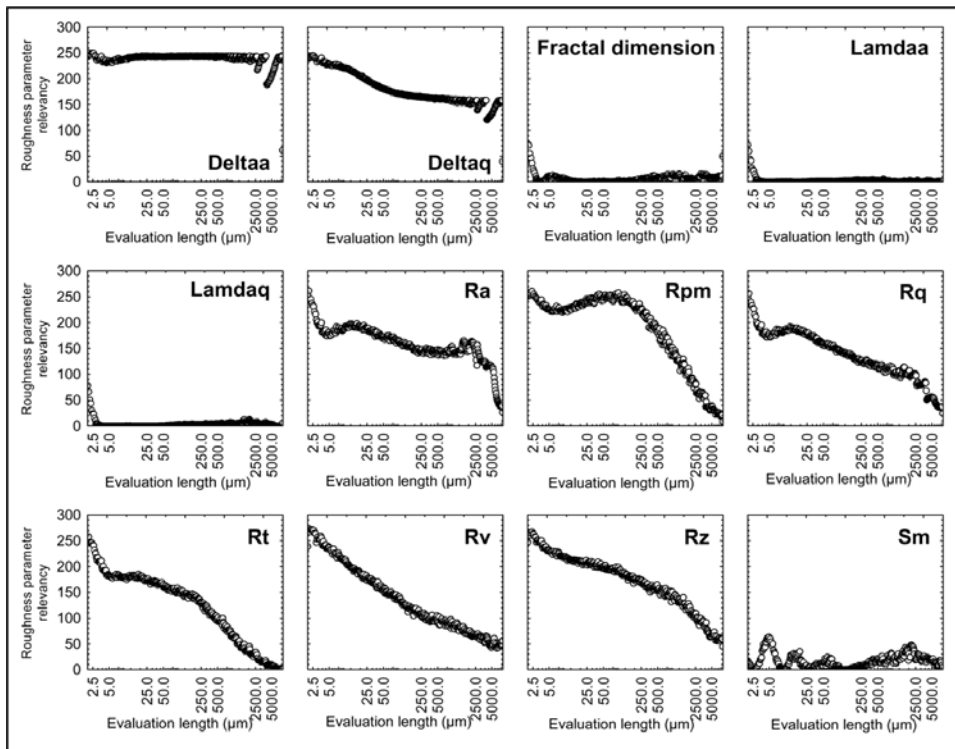
**Figure 16** SEM of effect of wrong cutting conditions induce by low rotation speed



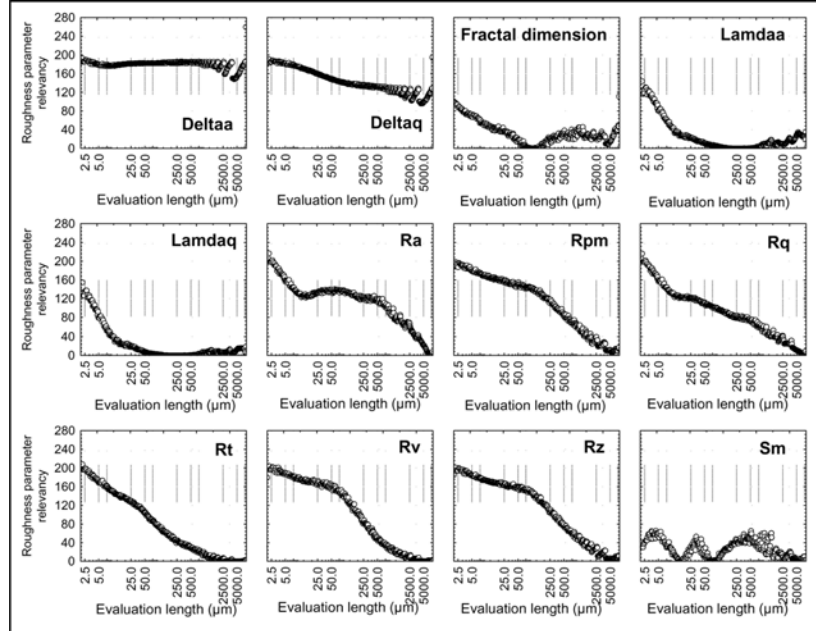
### 3.5 Effects of other process parameters

The results obtained for the belt feed and the axial oscillation frequency are shown, respectively, in Figures 17 and 18. It can be observed that pertinent roughness parameters are relevant at the minimum scale corresponding to the tip radius of the profilometer. To explain this result, a study should be done at lower scales with an AFM for example.

**Figure 17** Relevancy of roughness parameters vs. the evaluation length to describe effects of the belt feed



**Figure 18** Relevancy of roughness parameters vs. the evaluation length to describe effects of the axial oscillation frequency

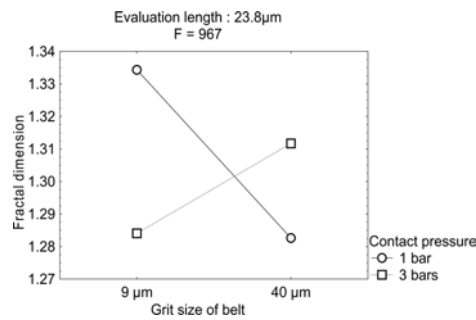


### 3.6 Effect of interactions

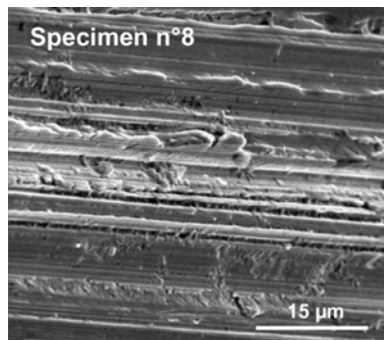
For the same reasons, only the interaction between belt grit size and contact pressure can be explained. The effects are plotted in Figure 19. This result can be explained as follows:

- For a low contact pressure, the surface tooled with low grit size has a lower mean 4 peaks width as seen before. It induces that, at a 23.8-μm evaluation length, this surface looks like random and the fractal dimension is higher: in other terms, grid size effect is dominant.
- For high contact pressure and a large grit size, the increase in the fractal dimension observed in Figure 19 could be explained by the apparition of ductile ploughing as seen in Figure 20. Yet, this result must be confirmed by a more precise study.

**Figure 19** Interaction effect between belt grit size and contact pressure



**Figure 20** SEM of ductile ploughing observed on specimen n°8 (high contact pressure and high grit size)



#### 4 Conclusion

This paper outlines a multi-scale method for roughness measurements to put in evidence the effects of the working conditions in the belt grinding process on the surface topography.

Most of the seven retained process parameters have an influence on roughness, in particular, on the mean width of peaks ( $S_m$ ). The most relevant evaluation length of roughness parameters depends both on the roughness parameter and on the belt grinding process parameter under consideration. As a consequence, it is important to select the best scale to study each physical phenomenon.

Results have shown that effects currently explained in the bibliography were confirmed for the macroscopic scale. Other roughness parameters will be implemented in our analysis system to better characterise surfaces at different scales. Another improvement could be to give the confidence interval of the  $F$  value by using a bootstrap protocol.

#### References

- Axinte, D.A., Kritmanorot, M., Axinte, M. and Gindy, N.N.Z. (2005) 'Investigations on belt polishing of heat-resistant titanium alloys', *Journal of Materials Processing Technology*, Vol. 166, pp.398–404.
- Benoist, D., Tourbier, Y. and Germain-Tourbier, S. (1995) *Plans d'expériences – construction et analyse*, Tec and Doc., January, Paris.
- Farin, G. (1996) *Curves and Surfaces for Computer-Aided Geometric Design – A Practical Guide*, 4th ed., Academic Press, New York.
- Ghidossi, P., El Mansori, M., Sura, E., Geoffroy, R. and Deblaise, S. (2005) 'Procédé de superfinition par toilage: analyse énergétique des variables process – temps de cycle et fréquence d'oscillation', *Integrated Design and Production – 4th International Conference*, Casablanca, Maroc, November, paper 101 – theme 13.
- Huang, H., Gong, Z.M., Chen, X.Q. and Zhou, L. (2002) 'Robotic grinding and polishing for turbine-vane overhaul', *Journal of Material Processing Technology*, Vol. 127, pp.140–145.
- Jourani, A., Dursapt, M., Hamdi, H., Rech, J. and Zahouani, H. (2005) 'Effect of the belt grinding on surface texture: modeling of the contact abrasive wear', *Wear*, Vol. 259, pp.1137–1143.

- Khellouki, A., Maiz, H., Rech, J. and Zahouani, H. (2005) 'Application de la méthode des plans d'expériences à la caractérisation du procédé de toilage de superfinition', *Integrated Design and Production – 4th International Conference*, Casablanca, Maroc, November, paper 95 – theme 2.
- Rech, J. and Moisan, A. (2003) 'Le toilage: un moyen d'optimisation de l'intégrité des surfaces usinées', *16<sup>ème</sup> congrès Français de Mécanique*, Nice, France, September.
- Tricot, C. (1993) *courbe et dimension fractale*, Spinger-Verlag, Paris.
- Zhang, X., Kuhlenkötter, B. and Kneupner, K. (2005) 'An efficient method for solving the Signorini problem in the simulation of free-form surfaces produced by belt grinding', *International Journal of Machine Tools and Manufacture*, Vol. 45, pp.641–648.