

PDF hosted at the Radboud Repository of the Radboud University Nijmegen

The following full text is a publisher's version.

For additional information about this publication click this link.

<http://hdl.handle.net/2066/138535>

Please be advised that this information was generated on 2017-12-05 and may be subject to change.

Left Ventricular Mass in Dialysis Patients, Determinants and Relation with Outcome. Results from the CONvective TRANsport STudy (CONTRAST)

Ira M. Mostovaya^{1*}, Michiel L. Bots², Marinus A. van den Dorpel³, Roel Goldschmeding⁴, Claire H. den Hoedt^{1,3}, Otto Kamp⁵, Renée Levesque⁶, Albert H. A. Mazairac¹, E. Lars Penne^{1,7}, Dorine W. Swinkels⁸, Neelke C. van der Weerd^{1,7}, Piet M. ter Wee^{7,9}, Menso J. Nubé^{7,9}, Peter J. Blankestijn¹, Muriel P. C. Grooteman^{7,9}

1 Department of Nephrology, University Medical Center Utrecht, Utrecht, the Netherlands, **2** Julius Center for Health Sciences and Primary Care, University Medical Center Utrecht, Utrecht, the Netherlands, **3** Department of Internal Medicine, Maastad Hospital, Rotterdam, the Netherlands, **4** Department of Pathology, University Medical Center Utrecht, Utrecht, the Netherlands, **5** Department of Cardiology, Vrije Universiteit Medical Center, Amsterdam, the Netherlands, **6** Department of Nephrology, Centre Hospitalier de l'Université de Montréal St. Luc Hospital, Montréal, Canada, **7** Department of Nephrology, Vrije Universiteit Medical Center, Amsterdam, the Netherlands, **8** Department of Laboratory Medicine, Laboratory of Genetic, Endocrine and Metabolic diseases, Radboud University Medical Centre Nijmegen, the Netherlands, **9** Institute for Cardiovascular Research Vrije Universiteit Medical Center, Vrije Universiteit Medical Center, Amsterdam, the Netherlands

Abstract

Background and Objectives: Left ventricular mass (LVM) is known to be related to overall and cardiovascular mortality in end stage kidney disease (ESKD) patients. The aims of the present study are 1) to determine whether LVM is associated with mortality and various cardiovascular events and 2) to identify determinants of LVM including biomarkers of inflammation and fibrosis.

Design, Setting, Participants, & Measurements: Analysis was performed with data of 327 ESKD patients, a subset from the CONvective TRANsport STudy (CONTRAST). Echocardiography was performed at baseline. Cox regression analysis was used to assess the relation of LVM tertiles with clinical events. Multivariable linear regression models were used to identify factors associated with LVM.

Results: Median age was 65 (IQR: 54–73) years, 203 (61%) were male and median LVM was 227 (IQR: 183–279) grams. The risk of all-cause mortality (hazard ratio (HR) = 1.73, 95% CI: 1.11–2.99), cardiovascular death (HR = 3.66, 95% CI: 1.35–10.05) and sudden death (HR = 13.06; 95% CI: 6.60–107) was increased in the highest tertile (>260grams) of LVM. In the multivariable analysis positive relations with LVM were found for male gender (B = 38.8 ± 10.3), residual renal function (B = 17.9 ± 8.0), phosphate binder therapy (B = 16.9 ± 8.5), and an inverse relation for a previous kidney transplantation (B = -41.1 ± 7.6) and albumin (B = -2.9 ± 1.1). Interleukin-6 (IL-6), high-sensitivity C-reactive protein (hsCRP), hepcidin-25 and connective tissue growth factor (CTGF) were not related to LVM.

Conclusion: We confirm the relation between a high LVM and outcome and expand the evidence for increased risk of sudden death. No relationship was found between LVM and markers of inflammation and fibrosis.

Trial Registration: Controlled-Trials.com ISRCTN38365125

Citation: Mostovaya IM, Bots ML, van den Dorpel MA, Goldschmeding R, den Hoedt CH, et al. (2014) Left Ventricular Mass in Dialysis Patients, Determinants and Relation with Outcome. Results from the CONvective TRANsport STudy (CONTRAST). PLoS ONE 9(2): e84587. doi:10.1371/journal.pone.0084587

Editor: Leighton R. James, University of Florida, United States of America

Received: July 29, 2013; **Accepted:** November 17, 2013; **Published:** February 5, 2014

Copyright: © 2014 Mostovaya et al. This is an open-access article distributed under the terms of the Creative Commons Attribution License, which permits unrestricted use, distribution, and reproduction in any medium, provided the original author and source are credited.

Funding: CONTRAST is partly supported by unrestricted grants from Fresenius Medical Care (The Netherlands) and Gambro Lundia AB (Sweden). Additional support for CONTRAST was also received from Roche, the Netherlands. There are no patents, products in development or marketed products to declare. IM Mostovaya, CH den Hoedt, O Kamp, ML Bots, NC van der Weerd, EL Penne and AHA Mazairac report receiving no lecture fees, no consulting support, or grant support. MPC Grooteman reports research funded by Fresenius, Gambro, and Baxter. PJ Blankestijn reports research funded by Fresenius, Gambro, Roche, Amgen and Novartis, consultant fee and honoraria for lectures from Fresenius, Gambro, Solvay, Medtronic, and Novartis. R Lévesque reports research funded by Amgen Canada. PM ter Wee reports research funded by Abbott, Baxter, Gambro, Fresenius, and Roche; honoraria for lectures received from Amgen, Roche, Genzyme, Fresenius. MJ Nubé reports research funded by Baxter and Fresenius; honoraria for lectures received from Fresenius and Baxter. MA van den Dorpel reports research funded by Amgen. This does not alter the authors' adherence to all the PLOS ONE policies on sharing data and materials. The funders had no role in study design, data collection and analysis, decision to publish, or preparation of the manuscript.

Competing Interests: The authors have the following interests: CONTRAST is partly supported by unrestricted grants from Fresenius Medical Care (The Netherlands) and Gambro Lundia AB (Sweden). Additional support for CONTRAST was also received from Roche, the Netherlands. There are no patents, products in development or marketed products to declare. IM Mostovaya, CH den Hoedt, O Kamp, ML Bots, NC van der Weerd, EL Penne, and AHA Mazairac report receiving no lecture fees, no consulting support, or grant support. MPC Grooteman reports research funded by Fresenius, Gambro, and Baxter. PJ Blankestijn reports research funded by Fresenius, Gambro, Roche, Amgen, and Novartis; consultant fee and honoraria for lectures from Fresenius, Gambro, Solvay, Medtronic, and Novartis. R Lévesque reports research funded by Amgen Canada. PM ter Wee reports research funded by Abbott, Baxter, Gambro, Fresenius, and Roche; honoraria for lectures received from Amgen, Roche, Genzyme, Fresenius. MJ Nubé reports research funded by Baxter and Fresenius; honoraria for lectures received from Fresenius and Baxter. MA van den Dorpel reports research funded by Amgen. This does not alter the authors' adherence to all the PLOS ONE policies on sharing data and materials.

* E-mail: I.M.Mostovaya@umcutrecht.nl

Introduction

Increased left ventricular mass (LVM) has been well described as a frequent component of end stage kidney disease (ESKD) [1]. In fact, more than seventy percent of patients starting dialysis show left ventricular hypertrophy (LVH) on echocardiography [2]. An increase in left ventricular mass (LVM) is associated with cardiovascular morbidity and mortality [3,4]. Although the relation between LVM and overall mortality and cardiovascular events has been well established in ESKD patients, the association between LVM and certain types of cardiovascular morbidity (such as coronary heart disease: CHD) and mortality (such as sudden death) has not yet been thoroughly investigated.

Several inflammatory biomarkers associated with cardiovascular pathology and morbidity have been described for patients with chronic kidney disease (CKD). High sensitivity C-reactive protein (hsCRP and interleukin-6 (Il-6) are both well accepted markers of inflammation, related to increased risk of death and cardiovascular disease [5]. HsCRP is an acute phase reactant, which has been associated with an increased risk of major cardiovascular disease [6]. HsCRP levels are higher in HD patients than in healthy individuals [7] and have been shown to be independent predictors of LVM indexed for body surface area (LVMI) in CKD patients [8]. Il-6 is a short acting protein secreted by cells of the immune system in response to inflammatory stimuli, and is suspected to be a central regulator in the inflammatory process that leads to atherosclerosis [9]. Several studies have reported the relation between a high Il-6 and increased risk of developing CVD [10–12]. In patient deceased from acute myocardial infarction, Il-6 has been associated with mechanisms of cardiac hypertrophy [13]. Furthermore, Il-6 levels are increased in dialysis patients [7,14].

Connective tissue growth factor (CTGF) is a signalling protein involved in the pathogenesis of renal and cardiac fibrosis [15]. In animal studies CTGF has been described to contribute to development of cardiac hypertrophy [16,17]. CKD patients have a higher plasma CTGF level than healthy individuals, since CTGF is eliminated predominantly by the kidney [18].

Hepcidin-25 is a peptide produced by the liver, which regulates intestinal absorption of iron and its distribution through the body [19]. The gene encoding for hepcidin-25 is regulated in response to anemia, hypoxia and inflammation [20]. Furthermore, hepcidin-25 is related to increased risk of cardiovascular events in chronic hemodialysis patients [21].

Although several studies have described a relationship between hsCRP and left ventricle geometry and function [8,22,23], the relationship between LVM and the four described biomarkers has not been examined in a large population of HD patients.

We hypothesize that a high LVM will be related to a higher risk of mortality and cardiovascular events in our study, as is the case in previously studied dialysis populations. Furthermore we expect to find a positive relation between specific cardiovascular events such as risk of CHD or sudden death and LVM. Regarding hsCRP, Il-6, CTGF and hepcidin-25, since these markers are related to pathophysiological mechanisms that could theoretically promote increase of LVM, we assume to find a positive relation between the magnitude of LVM and hsCRP, Il-6, CTGF and hepcidin-25. Hence, the aims of this study are 1) to determine whether LVM is associated with mortality and various cardiovascular events in our population of ESKD patients and 2) to identify determinants of LVM including biomarkers of inflammation, systemic iron homeostasis and fibrosis in HD patients.

Materials and Methods

Patients

The present study included a subset of patients participating in the CONvective TRANsport STudy (CONTRAST): 327 hemodialysis patients from 15 dialysis centres (14 Dutch centers and 1 Canadian center). CONTRAST has been designed to investigate the effects of increased convective transport by online HDF as compared with low-flux HD on all-cause mortality and cardiovascular morbidity and mortality (ISRCTN38365125) and included a total of 714 patients [24].

The study was conducted in accordance with the Declaration of Helsinki and approved by the medical ethics review boards of all participating dialysis centres. Written informed consent was obtained from all patients prior to enrolment. The names of the medical ethics committees/review boards that have approved this study are listed in the appendix S1 in File S1.

Data collection

Baseline patient and dialysis characteristics were used for this analysis: information on demography, anthropometrics, medical history, medication and standard laboratory values. A history of cardiovascular disease was defined as a previous acute myocardial infarction, coronary artery bypass graft, percutaneous transluminal coronary angioplasty, angina pectoris, stroke, transient ischemic attack, intermittent claudication, amputation, percutaneous transluminal angioplasty, peripheral bypass surgery and renal percutaneous transluminal angioplasty.

Systolic and diastolic blood pressure was measured before and after three consecutive dialysis sessions at baseline using a standard electronic sphygmomanometer. The average of these measurements was computed and used for analysis.

The primary outcome of CONTRAST was all cause mortality. Cause of death was recorded and subdivided into cardiovascular mortality (fatal myocardial infarction, fatal cerebrovascular accident, fatal decompensatio cordis, a rupture of the abdominal aorta or sudden death) and non-cardiovascular mortality. Sudden death was defined as death within 1 hour of the onset of symptoms as verified by a witness.

The main secondary endpoint was a composite of fatal and non-fatal cardiovascular events. Cardiovascular events were defined as death from cardiovascular causes, non-fatal myocardial infarction, non-fatal stroke, therapeutic coronary procedure (percutaneous transluminal coronary angioplasty and/or stenting), therapeutic carotid procedure (endarterectomy and/or stenting), and vascular intervention not related to vascular access (revascularisation, percutaneous transluminal angioplasty and/or stenting) or amputation. Congestive heart failure was excluded as a cardiovascular event, since the distinction with fluid overload is often difficult to make in patients with end stage renal disease.

Follow-up of patients with respect to mortality and non-fatal cardiovascular events was continued even after they stopped with the randomized treatment because of a renal transplant (n = 71), a switch to peritoneal dialysis (n = 5), a move to another CONTRAST hospital (n = 11) or a stop of participation for other reasons (n = 58).

An independent Endpoint Adjudication Committee reviewed source documentation for all primary outcome events (deaths), as well as non-fatal cardiovascular events and infections.

Table 1. Demographic, anthropometric, biochemical, hemodynamic and dialysis characteristics of the study population.

	Total Cohort n = 714	Echo cor cohort n = 327
Demographic data		
Male gender	445 (62%)	200 (61%)
Race, Caucasian	304 (85%)	263 (80%)
Age, years	64.1±13.7	63.0±13.3
Smoking	133 (19%)	66 (20%)
Anthropometrics		
Length (cm)	168±10	168±11
Weight (kg)	72.4±14.4	72.1±14.3
BMI (kg/m ²)	25.4±14.4	25.5±4.9
Body Surface Area (m ²)	1.85 (0.28)*	1.85 (0.30)*
Dialysis Properties		
Dialysis vintage (years)	1.8 (1.0–4.0)*	2.0 (1.0–4.0)*
Duration of dialysis (minutes)	226±23	225±23
Blood flow (mL/minute)	300 (300–348)*	300 (300–350)*
spKt/Vurea	1.40±0.22	1.39±0.20
AV fistula	279 (78%)	260 (80%)
Patients with residual kidney function	186 (52%)	171 (52%)
Comorbidities		
Cardiovascular disease	313 (44%)	146 (45%)
Diabetes	170 (24%)	83 (25%)
Previous kidney transplant	78 (11%)	30 (9%)
Laboratory parameters		
Hemoglobin (g/dL)	11.8±0.40	11.8±1.3
Phosphate (mmol/L)	1.64±0.49	1.67±0.50
Calcium (mmol/L)	2.31±0.18	2.30±0.18
Albumin (g/L)	40.4±3.8	41.2 (37.9–43.5)*
Creatinine (μmol/L), pre-dialysis	861±255	883±252
hsCRP (mg/L)	-	4.0 (1.6–11.9)*
Il-6 (pg/mL)	-	2.0 (1.2–3.8)*
CTGF (nmol/L)	-	3.6 (2.8–4.3)*
Hepcidin -25 (nM)	-	14.2 (6.3–22.4)*
Ferritin (ng/mL)	-	377 (211–597)*
TSAT (%)	-	22 (15–29)*
Medication		
Erythropietin therapy	314 (88%)	295 (91%)
Diuretic therapy	250 (35%)	129 (39%)
Beta-blocker therapy	184 (51%)	174 (53%)
RAS inhibitor therapy	179 (50%)	162 (50%)
Lipid lowering therapy	196 (55%)	152 (47%)
Vitamin D administration	227 (63%)	222 (68%)
Phosphate binding therapy	445 (62%)	194 (59%)
Platelet aggregation therapy or coumarines	111 (34%)	122 (36%)
Iron supplements	476 (67%)	213 (65%)
Hemodynamic measurements		
Systolic blood pressure (mm Hg)	147±21	142±19

Table 1. Cont.

	Total Cohort n = 714	Echo cor cohort n = 327
Diastolic blood pressure (mm Hg)	75±12	74±10
LVEDD (mm)	-	10 (9–11)*
LVESD (mm)	-	32 (27–38)*
EFLV (%)	-	65 (55–72)*
LVM (g)	-	227 (183–279)*
LVH	-	230 (71%)

*:median and IQR (P25–P75).

AV: arterio-venous;BMI: body mass index; CTGF: connective tissue growth factor; EFLV: ejection fraction of left ventricle; hsCRP: high sensitivity C-reactive protein; Il-6: interleukin 6; LVEDD: left ventricular end diastolic diameter; LVESD: left ventricular end systolic diameter; LVH: left ventricular hypertrophy; LVM: left ventricular mass; RAS: renin-angiotensin system; TSAT: transferrin saturation. doi:10.1371/journal.pone.0084587.t001

Laboratory measurements

Standard laboratory samples were analysed in the local laboratories of the participating hospitals by standard laboratory techniques.

Furthermore, in centres where storage of blood samples was logistically feasible, additional blood samples were drawn for the analysis of hsCRP, Il-6, CTGF and hepcidin prior to dialysis. Samples were placed on ice, and centrifuged within 30 min, at 1500 g for 10 minutes, and were stored at -80°C until assayed. A total of 248 patients, out of the 327 who underwent echocardiography, were treated in such centers and therefore had additional measurements of hsCRP, Il-6, CTGF and hepcidin.

High sensitivity CRP, hepcidin-25, CTGF and IL-6 levels were measured centrally. Measurements of the bioactive hepcidin-25 were performed with time of flight mass spectrometry which has been described previously [25]. High sensitivity CRP (mg/L) was measured with a particle-enhanced immunoturbidimetric assay on a Roche-Hitachi analyzer as described elsewhere [21]. IL-6 (pg/mL) was measured with an ELISA (Sanquin, Amsterdam, The Netherlands), details have been described earlier [26]. CTGF levels in plasma were determined by sandwich ELISA, using two specific antibodies (FibroGen Inc., San Francisco, CA, USA) directed against two distinct isotopes in the amino-terminal fragment of CTGF, detecting both full length CTGF and the N-fragment, as shown earlier [18].

Echocardiographic measurements

In 15 centres, patients were requested to undergo 2-dimensional echocardiography next to the standard CONTRAST baseline data collection.

Transthoracic echocardiography studies were performed on a mid-week non-dialysis day by an echocardiographer at the participating local hospital. From the parasternal long axis position the left ventricular end-diastolic diameter (LVEDD), end-systolic diameter (LVESD) as well as the posterior and septal wall thickness were determined. The ultrasound investigations were then assessed by an independent experienced echocardiographer at the core laboratory (VU medical Center, Amsterdam, the Netherlands), who was blinded for other patient data. LVM was calculated using the formula of Devereux and Reickeck [27], modified in accordance with the recommendations of the American Society of Echocardiography [28]. LVH was defined as an LVM/height^{2.7} >44g/m^{2.7} for women and >48 g/m^{2.7} for men [3].

Table 2. Hazard ratio of clinical events by LVM in grams divided into tertiles.

	T1: <201	T2: 201<LVM<260	95% CI	T3: >260	95% CI
Crude					
Mortality	1	1.61*	1.01–2.55	2.17*	1.39–3.38
Cardiovascular death	1	2.24	0.90–5.55	3.76*	1.61–8.82
Sudden death	1	8.93*	1.12–71.4	17.8*	2.35–135.0
Cardiovascular events	1	1.47	0.92–2.44	1.66*	1.06–2.67
CHD events	1	1.04	0.51–2.13	1.13	0.56–2.31
Adjusted^a					
Mortality	1	1.50	0.92–2.10	1.73*	1.11–2.99
Cardiovascular death	1	1.80	0.64–5.07	3.69*	1.35–10.05
Sudden death	1	6.29	0.72–52.70	13.06*	6.60–107.16
Cardiovascular events	1	1.27	0.74–2.18	1.49	0.85–2.60
CHD events	1	1.22	0.71–2.09	1.51	0.87–2.64

*p<0.05.

^aAdjusted with a propensity score containing determinants of LVM (male gender, residual renal function, history of kidney transplantation, albumin, use of RAS-inhibitors, use of phosphate binders, systolic blood pressure) and history of cardiovascular disease, diabetes, height, post-dialysis weight and dialysis modality (intervention).

doi:10.1371/journal.pone.0084587.t002

Data analysis

Data were reported as proportions or as means with standard deviation (SD) or medians with inter-quartile ranges (IQR) when appropriate.

The average percentage of missing values per variable was 7.7%. No data were missing regarding clinical events. Multiple imputation was performed on all variables, where <40% of data were missing. One variable was not imputed due to a higher percentage of missing values, namely blood flow. Imputation was performed to prevent bias in reported estimates and to improve statistical power [29].

To study the independent relation of each variable with LVM, linear regression analysis was used. Patient and dialysis related variables that showed a univariable relation with LVM using a cut-off p-value <0.20 were entered in a multivariate model in consequent groups: demographic data, patient history, dialysis properties, therapeutic parameters and haemodynamic measurements. In addition, height and weight were added into the model upfront.

In a separate analysis, the variables hsCRP, IL-6, hepcidin-25 and CTGF were added to the constructed multivariate model one at a time. The old and new models were compared based on direction of the estimate and the significance of the regression coefficient of the added marker.

The relations between LVM and all-cause mortality, as well as cardiovascular events, cardiovascular death, sudden death and CHD were evaluated by Cox proportional hazards models, involving the time to the first relevant endpoint in any individual patient. For this analysis LVM was both analysed as a linear variable and divided into categories (tertiles). The number of events (in particular sudden death and CHD events) was small, and thus adjusting for all relevant possible confounders would lead to an overfitted model. Propensity scores as opposed to individual variables were used to adjust the models thus omitting the problem of an overfitted model. The propensity score [30] model estimated each individuals probability of having an LVM above the median of the studied population. Propensity score was built using a logistic model including all variables associated with LVM with p<0.20. Moreover, height, post-dialysis baseline weight and

dialysis modality (intervention) were added into the propensity score model upfront.

Results were considered statistically significant when p<0.05 (two-sided). All calculations were made by use of a standard statistical package (SPSS for Windows Version 18.0.1; SPSS Inc. Headquarters, Chicago, Illinois, US).

Results

327 patients participating in CONTRAST underwent echocardiography. Out of this group, in 248 patients blood was collected for a measurement of markers of inflammation and fibrosis. Median age was 65 (IQR: 54–73) years, 203 were male (61%) and the median dialysis vintage was 2.0 (IQR: 1.0–4.0) years. Median LVM was 227 (IQR: 183–279) grams. A total of 230 patients (71%) had LVH. The baseline characteristics of the whole CONTRAST cohort and of the echocardiography population are shown in table 1. The mean follow-up time was 2.0 (minimum 0.1, maximum 6.5) years. Within the group of patients with an LVM measurement 130 (39.8%) patients died from any cause and 116 (35.5%) had a cardiovascular event, out of which 43 (13.1%) were fatal. CHD (angina pectoris or acute myocardial infarction) occurred in 53 (16.2%) patients, of whom 3 (0.9%) died. Sudden death occurred in 24 (7.3%) patients.

Relation to LVM and outcome

Table 2 shows proportional hazard ratios for all-cause mortality, cardiovascular death, sudden death, combined fatal and non-fatal cardiovascular events and CHD events; both crude and adjusted using propensity scores. Risk of all-cause mortality, cardiovascular death and sudden death was increased in the highest tertile (>260grams) of LVM; while no difference in risk was found for overall cardiovascular events and CHD events in the LVM tertiles. Figure 1 shows survival curves for the clinical events described above stratified by LVM tertiles.

As shown in Table S1a and S1b in File S1, when LVM was indexed for BSA or height^{2.7}, relations with clinical events were similar.

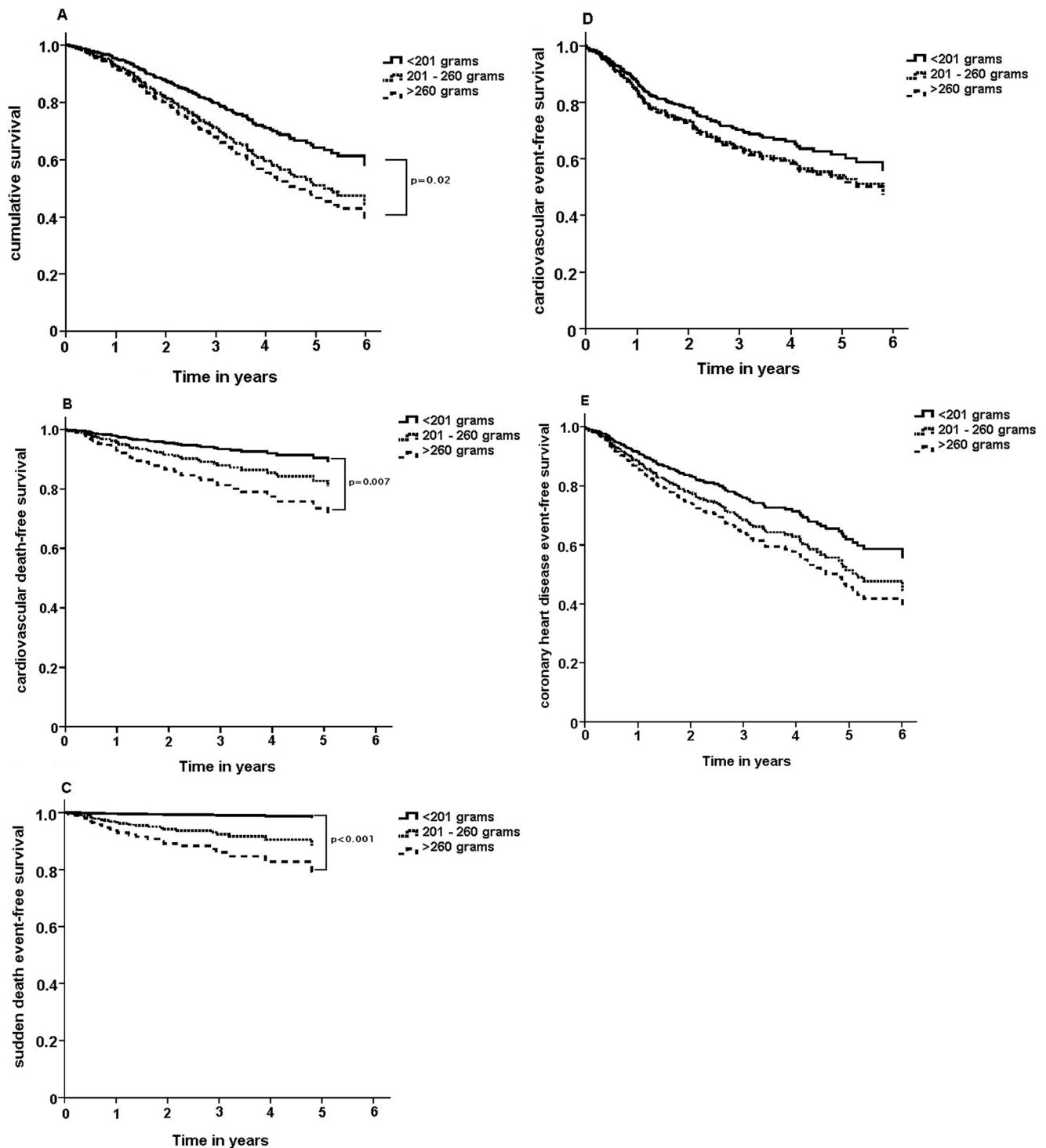


Figure 1. Survival curves for (A) time to death from any cause, (B) cardiovascular death, (C) sudden death, (D) cardiovascular events (both fatal and non-fatal), (E) coronary heart disease events (both fatal and non-fatal, all stratified by LVM tertiles and adjusted using propensity scores.

doi:10.1371/journal.pone.0084587.g001

Determinants of LVM

The univariable and multivariable analysis results of LVM are shown in Table 3. In the multivariate analysis significant positive relations with LVM were found for male gender, presence of residual renal function and phosphate binder therapy. There were

inverse relations for a history of kidney transplantation and albumin. The complete-case multivariate regression analysis showed similar results as demonstrated in Table S2 in File S1.

Table 4 shows that hsCRP, IL-6, hepcidin-25 and CTGF were not related to LVM.

Table 3. Determinants of LVM in dialysis patients: univariable and multivariable regression analysis.

Determinant	Univariable model		Multivariable model	
	B	95% CI	B	95% CI
<i>Demographic data</i>				
Male gender	56.47	39.03 to 73.90	38.80	18.64 to 58.96
Race, Caucasian	12.92	−9.75 to 35.60		
Age (years)	0.75	0.08 to 1.42		
Smoking	22.20	−0.47 to 44.87		
<i>Dialysis Properties</i>				
Duration of dialysis (hours)	35.14	10.95 to 59.33		
spKt/Vurea	−102.7	−145.7 to −59.75		
AV fistula	17.59	−4.66 to 38.83		
<i>Comorbidities</i>				
Cardiovascular disease	16.54	−1.50 to 34.58		
Diabetes	1.94	−18.45 to 22.37		
Previous kidney transplant	−49.76	−80.38 to −19.01	−41.12	−55.94 to −26.31
Dialysis vintage (years)	−5.45	−8.61 to −2.30		
Residual kidney function	29.28	−11.52 to 47.04	17.88	2.16 to 33.61
<i>Laboratory parameters</i>				
Hemoglobin (g/dL)	−1.00	−12.53 to 10.53		
Phosphate (mmol/L)	0.89	−17.17 to 18.94		
Calcium (mmol/L)	13.37	−32.36 to 63.99		
Calcium*Phosphate	1.28	−6.48 to 9.03		
Albumin (g/L)	−1.99	−4.17 to 0.20	−2.94	−5.08 to −0.81
Creatinin (μmol/L)	−0.02	−0.05 to 0.02		
<i>Therapeutic parameters</i>				
Erythropietin	−9.68	−38.78 to 19.38		
Diuretic	0.97	−18.99 to 20.94		
Beta-blocker	16.26	−1.70 to 34.21		
Alpha-blocker	21.44	−13.64 to 56.51		
RAS inhibitor	21.67	3.82 to 39.51	14.08	−2.46 to 30.62
Lipid lowering therapy	0.95	−17.06 to 18.95		
Vitamin D administration	5.15	−14.16 to 22.45		
Phosphate binder	17.82	−0.420 to 36.05	16.87	0.14 to 33.56
Platelet aggregation inhibitor	10.35	−8.44 to 29.13		
Coumarine derivates	22.50	−14.09 to 59.08		
Iron supplements	22.56	3.81 to 41.32		
<i>Hemodynamic measurements</i>				
Systolic blood pressure (mm Hg)	0.54	0.08 to 1.00	0.37	−0.77 to 0.82

The B reflects the change of total LVM (in grams) related with one unit increment of the determinant.

R² of the multivariable model=0.22.

doi:10.1371/journal.pone.0084587.t003

Discussion

The present study confirmed the relation between a high LVM and outcome [2,4,31,32]. Furthermore we expanded the evidence for a strongly increased risk of sudden death in patients with a high LVM. After confirming that LVM was a strong predictor of cardiovascular and overall mortality we wanted to study what factors determine the magnitude of LVM, and in particular if these determinants were potentially modifiable. In our analysis, factors related to LVM were: male gender, history of kidney transplantation, residual kidney function (RKF), albumin and use of

phosphate binders. Thus we did not find determinants of LVM that could easily be altered in daily clinical practice. Lastly, we explored whether novel markers of inflammation, fibrosis and iron homeostasis (hsCRP, Il-6, CTGF and hepcidin-25), which in theory could lead to a higher LVM, were related to LVM in a large population of hemodialysis patients. Apparently, although hsCRP, Il-6, CTGF, hepcidin-25 have previously been found to be associated with cardiovascular damage, no relation exists between these biomarkers and the magnitude of LVM in ESKD patients.

Table 4. Hepcidin, hsCRP, Il-6 and CTGF as determinants of LVM.

Determinant	Univariable model		Adding to 'basic' multivariable model		
	B	95% CI	B	95% CI	ΔR^2
Hepcidin-25 (nM)	-0.04	-0.46 to 0.38	0.04	-0.38 to 0.45	-0.003
hsCRP (mg/L)	0.22	-0.46 to 0.90	0.07	-0.43 to 0.57	-0.003
Il-6 (pg/mL)	0.03	-0.17 to 0.22	0.06	-0.13 to 0.23	-0.002
CTGF (nmol/L)	0.05	-3.92 to 4.01	0.67	-3.45 to 4.78	-0.001

The B reflects the change of total LVM (in grams) related with one unit increment of the determinant.
doi:10.1371/journal.pone.0084587.t004

LVM and clinical events

A summary of previous papers in which the relation between left ventricular geometry and clinical events was studied in dialysis patients is shown in Table 5. Foley et al studied the relation between LVM and mortality risks in 433 ESKD patients and found a significant linear association between LVM and overall mortality as well as cardiovascular mortality in particular [2]. Zoccali et al studied the prognostic impact of LVM indexed for body surface area or height^{2.7} in 254 dialysis patients and found that both types of LVMi were related to both overall mortality and cardiovascular mortality [31].

We are among the first to describe the relationship between LVM and sudden death specifically in ESKD patients. In fact, ESKD patients in the highest tertile of LVM had an almost 14-fold higher risk of sudden death when compared to the lowest LVM tertile, while their risk of dying from a cardiac cause in general was 'only' increased by a factor 3.5. The underlying mechanism may be through a decrease in myocardial capillary density, diastolic and systolic dysfunction, disturbances in interventricular conduction, chamber dilatation and eventually more compensatory hypertrophy. These processes lead to an increased risk of triggering a fatal arrhythmia [1,33]. Autopsy studies in ESKD patients point to the presence of diffuse inter-myocardocyte fibrosis specific for this group, which may indicate an electrical instability predisposing to sudden death [34]. The percentage of

sudden deaths (56%) from all cardiac deaths in our population was similar to those of earlier studies [33].

For a combination of fatal- and non-fatal cardiovascular events no relation with LVM size was found. To our knowledge, no such relation has been described in earlier literature; although Zoccali et al found a significant relation between LVM indexed for height^{2.7} and fatal- and non-fatal cardiovascular events combined [31]. Since there were only 3 lethal CHD events in our study, this association could not be explored in our population.

Determinants of LVM

Factors related to LVM were: male gender, history of kidney transplantation, residual kidney function (RKF), albumin and use of phosphate binders.

It was a surprising finding that a history of CVD and blood pressure (BP) were not found to be associated with LVM. Regarding the lack of relation between LVM and CVD this could be attributed to the fact that our definition of CVD encompassed several periphery vasculature diseases/interventions, which do not necessarily lead to an enlargement of LVM. Also, many ESKD patients have a high LVM without a history of CVD [2]. While BP is very variable over time in dialysis patients (mostly due to rigorous changes in extracellular volume during and in-between dialysis treatments), our BP results are an average of three pre- and three post-dialysis BP measurements. Hence our BP

Table 5. Summary of previous studies in which the relation between LV geometry and clinical events was examined in dialysis patients.

Author	patient nr	LV measurement	event	Risk measure	Conclusion
Silverberg et al 1989 (33)	133	LVMi (g/m ²)	mortality	RR: 2.9 (p=0.013)	LVM is an important determinant of survival in incident dialysis patients
Foley et al 1995 (2)	433	LVMi (g/m ²)	mortality	RR: 1.003 (p=0.11)	LVM is highly prevalent in th dialysis population and is a risk factor for mortality
London et al 2001 (4)	153	more than 10% decrease in LVMi (g/height ^{2.7})	mortality	RR: 0.78 (p=0.001)	partial regression of LVM has a favorable effect on mortality and CV-mortality
Zoccali et al 2001 (32)	254	LVMi (g/m ²)	mortality	HR: 1.01 (p<0.001)/1.03 (p<0.001)	LVM indexed for height ^{2.7} provides a more powerful predictor for death and CV events compared to LVM indexed for BSA
Zoccali et al 2004 (3)	161	LVMi (g/height ^{2.7})	CV mortality	HR: 1.01 (p<0.001)/1.03 (p<0.001)	Changes in LVMi have an independent prognostic value for death and CV events
			CV event	HR: 1.00 (ns)/1.02 (p=0.004)	
			mortality	HR: 3.07 (p=0.008)	
			CV event	HR: 3.02 (p=0.02)	

CV events are defined as a combination of both fatal and non-fatal cardiovascular events.

BSA: body surface area; CV: cardiovascular; HR: hazard ratio; LV: left ventricular; LVH: left ventricular hypertrophy; LVM: left ventricular mass; LVMi: left ventricular mass index; nr: number; RR: relative risk.

doi:10.1371/journal.pone.0084587.t005

measurements could be a poor representative of the total BP burden of a patient (which is truly related to LVM).

The relation between LVM and a history of kidney transplantation [35,36] and albumin [37] is in accordance with earlier literature.

The positive relation between LVM and RKF may be explained by a ‘survivor bias’: patients that still have RKF have been on dialysis for a shorter period of time. As time passes, the patients with a high LVM are more likely to die, the patient with a lower LVM remain and lose their RKF. In our population, the dialysis vintage differs significantly between patient with RKF (1.92 ± 1.58 years) and without RKF (4.00 ± 3.4 years).

Previous studies on predictors of LVM and LVMi in HD patients identified phosphate and the calcium-phosphate product as patient characteristics associated with LVH [38–40]. In our analysis however, these laboratory values were not significantly related to LVM, while there was a positive association between LVM and use of phosphate binders. The serum calcium and phosphate are well controlled in our dialysis population, and phosphate binders were prescribed to 74% of the patients (mainly sevelamer, a non-calcium containing phosphate binder: 54%). Hyperphosphatemia can lead to vascular calcification and myocardial fibrosis, resulting in increased cardiovascular risk [41]. Thus, it is plausible that in our population the prescription of phosphate binders is a reflection of higher phosphate intake at present and/or hyperphosphatemia in the past, resulting in higher LVM.

Relation between LVM and hsCRP, Il-6, CTGF, hepcidin

We are among the first to investigate the association between LVM and the biomarkers hsCRP, Il-6, CTGF and hepcidin in a population of ESKD patients, which is also large enough to perform appropriate corrections for clinically relevant variables without creating an overfitted model. Although there is a theoretical incentive, as described in the Introduction, to hypothesize that these biomarkers may contribute to LVM, we do not find such a relation in our population. Apparently, although hsCRP, Il-6, CTGF, hepcidin-25 have previously been found to be associated with cardiovascular damage, no relation exists between these biomarkers and the magnitude of LVM in ESKD patients.

In earlier papers concerning LVM and prognosis, LVM was indexed for body surface area, or divided by height^{2.7}. It was shown that these indexations, especially LVM/height^{2.7} are better predictors of clinical events than LVM. [3,4]) A downside of ratios is that observed relation may be due to the nominator, the denominator or both. Therefore in the present analyses we chose to use LVM for our analyses only with correction for height and weight in the propensity scores for optimal statistical adjustment. As shown in Tables S1a and S1b in File S1, when LVM was adjusted for height and weight, the relation with clinical events was similar to that of LVM indexed for BSA or height^{2.7}.

Strengths and limitations

This study had several limitations. First, 7.7% of data was missing and biomarkers were measured in only 75.5% of the

patients. However, since multiple imputation was performed for missing variables included in the multivariable analysis, this prevents the drawing of wrong conclusions due to the fact that data may be missing in specific patients for a reason, and not by chance and by increasing the power of our analyses [29]. Furthermore, our sensitivity analyses of complete cases showed no marked differences with the regression performed on the imputed data. Second, the number of CHD events and sudden deaths was small, thus limiting the precision of our estimates. Third, since cross-sectional data was used to determine variables related to LVM, causality of relations cannot be established. Fourth, measurements of LVM by echocardiography is less precise and reliable than measurement by cardiac magnetic resonance imaging (CMRI) [1]. However, while CMRI is recognized as the “gold standard” for ventricular geometry measurements, it is less often applied in clinical practice since it is more expensive, not widely available and has contra-indications such as claustrophobia and use of cardiac implantable devices [1]. Thus it was not feasible to perform CMRI measurements in our relatively large cohort of dialysis patients. This may have led to misclassification, which generally leads to an underestimation of the magnitude of the relations under study.

The strengths of this study are the large sample size, the concise and prospective data collection, the independent review of source documentation for all primary and secondary outcomes and the double independent analysis of the echocardiography recordings blinded for patient characteristics.

Conclusion

In this study we confirmed the relation between LVM and all-cause mortality. Furthermore we demonstrated a markedly increased risk of sudden death in patients with a high LVM.

No relationship was found for markers of inflammation (except for a negative association with albumin) and fibrosis.

Supporting Information

File S1 Appendix S1, Names of the ethics committees/ institutional review boards. Table S1, (A) Hazard ratio of clinical events by LVMi in grams per m² divided into tertiles. (B) Hazard ratio of clinical events by LVMi in grams per height^{2.7} divided into tertiles. Table S2, Whole-case analysis (n = 289) of determinants of LVM in dialysis patients: univariable and multivariable regression analysis. (DOCX)

Acknowledgments

The authors are grateful to the patients and nursing staff participating in this project.

Author Contributions

Conceived and designed the experiments: MB MD PW MN PB MG RL. Performed the experiments: MB MD PW MN PB MG CH AM NW LP RL. Analyzed the data: IM MB. Contributed reagents/materials/analysis tools: RG DS OK. Wrote the paper: IM MB PB.

References

1. Glasscock RJ, Pecoits-Filho R, Barberato SH (2009) Left ventricular mass in chronic kidney disease and ESRD. *Clin J Am Soc Nephrol* 4 Suppl 1: S79–S91.
2. Foley RN, Parfrey PS, Hamnett JD, Kent GM, Martin CJ, et al (1995) Clinical and echocardiographic disease in patients starting end-stage renal disease therapy. *Kidney Int* 47: 186–192.
3. Zoccali C, Benedetto FA, Mallamaci F, Tripepi G, Giaccone G, et al. (2004) Left ventricular mass monitoring in the follow-up of dialysis patients: prognostic value of left ventricular hypertrophy progression. *Kidney Int* 65: 1492–1498.
4. London GM, Pannier B, Guerin AP, Blacher J, Marchais SJ, et al. (2001) Alterations of left ventricular hypertrophy in and survival of patients receiving hemodialysis: follow-up of an interventional study. *J Am Soc Nephrol* 12: 2759–2767.

5. Panichi V, Migliori M, De PS, Taccola D, Bianchi AM, et al. (2000) C-reactive protein as a marker of chronic inflammation in uremic patients. *Blood Purif* 18: 183–190.
6. Mora S, Musunuru K, Blumenthal RS (2009) The clinical utility of high-sensitivity C-reactive protein in cardiovascular disease and the potential implication of JUPITER on current practice guidelines. *Clin Chem* 55: 219–228.
7. El-Shehaby AM, El-Khatib MM, Battah AA, Roshdy AR (2010) Apelin: a potential link between inflammation and cardiovascular disease in end stage renal disease patients. *Scand J Clin Lab Invest* 70: 421–427.
8. Cottone S, Nardi E, Mule G, Vadala A, Lorito MC, et al. (2007) Association between biomarkers of inflammation and left ventricular hypertrophy in moderate chronic kidney disease. *Clin Nephrol* 67: 209–216.
9. Jones SA, Horiuchi S, Topley N, Yamamoto N, Fuller GM (2001) The soluble interleukin 6 receptor: mechanisms of production and implications in disease. *FASEB J* 15: 43–58.
10. Ridker PM, Rifai N, Stampfer MJ, Hennekens CH (2000) Plasma concentration of interleukin-6 and the risk of future myocardial infarction among apparently healthy men. *Circulation* 101: 1767–1772.
11. Biasillo G, Leo M, Della BR, Biasucci LM (2010) Inflammatory biomarkers and coronary heart disease: from bench to bedside and back. *Intern Emerg Med* 5: 225–233.
12. Vasan RS, Sullivan LM, Roubenoff R, Dinarello CA, Harris T, et al. (2003) Inflammatory markers and risk of heart failure in elderly subjects without prior myocardial infarction: the Framingham Heart Study. *Circulation* 107: 1486–1491.
13. Kaneko K, Kanda T, Yokoyama T, Nakazato Y, Iwasaki T, et al. (1997) Expression of interleukin-6 in the ventricles and coronary arteries of patients with myocardial infarction. *Res Commun Mol Pathol Pharmacol* 97: 3–12.
14. Ayerden EF, Ebinc H, Derici U, Aral A, Aybay C, et al. (2009) The relationship between adiponectin levels and proinflammatory cytokines and left ventricular mass in dialysis patients. *J Nephrol* 22:216–223.
15. Clarkson MR, Gupta S, Murphy M, Martin F, Godson C, et al. (1999) Connective tissue growth factor: a potential stimulus for glomerulosclerosis and tubulointerstitial fibrosis in progressive renal disease. *Curr Opin Nephrol Hypertens* 8: 543–548.
16. Zhang J, Chang L, Chen C, Zhang M, Luo Y, et al. (2011) Rad GTPase inhibits cardiac fibrosis through connective tissue growth factor. *Cardiovasc Res* 91: 90–98.
17. Hayata N, Fujio Y, Yamamoto Y, Iwakura T, Obana M, et al. (2008) Connective tissue growth factor induces cardiac hypertrophy through Akt signaling. *Biochem Biophys Res Commun* 370: 274–278.
18. Gerritsen KG, Peters HP, Nguyen TQ, Koeners MP, Wetzels JF, et al. (2010) Renal proximal tubular dysfunction is a major determinant of urinary connective tissue growth factor excretion. *Am J Physiol Renal Physiol* 298: F1457–F1464.
19. Fleming RE, Sly WS (2001) Heparin: a putative iron-regulatory hormone relevant to hereditary hemochromatosis and the anemia of chronic disease. *Proc Natl Acad Sci U S A* 98: 8160–8162.
20. Nicolas G, Chauvet C, Viatte L, Danan JL, Bigard X, et al. (2002) The gene encoding the iron regulatory peptide hepcidin is regulated by anemia, hypoxia, and inflammation. *J Clin Invest* 110: 1037–1044.
21. van der Weerd NC, Grooteman MP, Bots ML, van den Dorpel MA, den Hoedt CH, et al. (2013) Heparin-25 is related to cardiovascular events in chronic haemodialysis patients. *Nephrol Dial Transplant* 28: 3062–3071.
22. Nozari Y, Geraiely B (2011) Correlation between the serum levels of uric acid and HS-CRP with the occurrence of early systolic failure of left ventricle following acute myocardial infarction. *Acta Med Iran* 49: 531–535.
23. Tataschiere A, Zimarino M, Renda G, Zurro M, Soccio M, et al. (2008) Awake blood pressure variability, inflammatory markers and target organ damage in newly diagnosed hypertension. *Hypertens Res* 31: 2137–2146.
24. Penne EL, Blankstijn PJ, Bots ML, van den Dorpel MA, Grooteman MP, et al. (2005) Resolving controversies regarding hemodiafiltration versus hemodialysis: the Dutch Convective Transport Study. *Semin Dial* 18: 47–51.
25. Kroot JJ, Laarakkers CM, Geurts-Moespot AJ, Grebenchtchikov N, Pickkers P, et al. (2010) Immunochemical and mass-spectrometry-based serum hepcidin assays for iron metabolism disorders. *Clin Chem* 56: 1570–1579.
26. van der Weerd NC, Grooteman MP, Bots ML, van den Dorpel MA, den Hoedt CH, et al. (2012) Heparin-25 in chronic hemodialysis patients is related to residual kidney function and not to treatment with erythropoiesis stimulating agents. *PLoS One* 7: e39783.
27. Devereux RB, Casale PN, Hammond IW, Savage DD, Alderman MH, et al. (1987) Echocardiographic detection of pressure-overload left ventricular hypertrophy: effect of criteria and patient population. *J Clin Hypertens* 3: 66–78.
28. Schiller NB, Shah PM, Crawford M, DeMaria A, Devereux R, et al. (1989) Recommendations for quantitation of the left ventricle by two-dimensional echocardiography. American Society of Echocardiography Committee on Standards, Subcommittee on Quantitation of Two-Dimensional Echocardiograms. *J Am Soc Echocardiogr* 2: 358–367.
29. Greenland S, Finkle WD (1995) A critical look at methods for handling missing covariates in epidemiologic regression analyses. *Am J Epidemiol* 142: 1255–1264.
30. Sjolander A (2009) Propensity scores and M-structures. *Stat Med* 28: 1416–1420.
31. Zoccali C, Benedetto FA, Mallamaci F, Tripepi G, Giaccone G, et al. (2001) Prognostic impact of the indexation of left ventricular mass in patients undergoing dialysis. *J Am Soc Nephrol* 12: 2768–2774.
32. Silberberg JS, Barre PE, Prichard SS, Sniderman AD (1989) Impact of left ventricular hypertrophy on survival in end-stage renal disease. *Kidney Int* 36: 286–290.
33. Ritz E, Wanner C (2008) The challenge of sudden death in dialysis patients. *Clin J Am Soc Nephrol* 3: 920–929.
34. Aoki J, Ikari Y, Nakajima H, Mori M, Sugimoto T, et al. (2005) Clinical and pathologic characteristics of dilated cardiomyopathy in hemodialysis patients. *Kidney Int* 67: 333–340.
35. Larsson O, Attman PO, Beckman-Suurkula M, Wallentin I, Wikstrand J (1986) Left ventricular function before and after kidney transplantation. A prospective study in patients with juvenile-onset diabetes mellitus. *Eur Heart J* 7: 779–791.
36. Guizar-Mendoza JM, mador-Licona N, Lozada EE, Rodriguez L, Gutierrez-Navarro M, et al. (2006) Left ventricular mass and heart sympathetic activity after renal transplantation in children and young adults. *Pediatr Nephrol* 21: 1413–1418.
37. Zoccali C, Mallamaci F, Tripepi G (2003) Traditional and emerging cardiovascular risk factors in end-stage renal disease. *Kidney Int Suppl* : S105–S110.
38. Achinger SG, Ayus JC (2006) Left ventricular hypertrophy: is hyperphosphatemia among dialysis patients a risk factor? *J Am Soc Nephrol* 17: S255–S261.
39. Nitta K, Akiba T, Uchida K, Otsubo S, Otsubo Y, et al. (2004) Left ventricular hypertrophy is associated with arterial stiffness and vascular calcification in hemodialysis patients. *Hypertens Res* 27: 47–52.
40. Chue CD, Edwards NC, Moody WE, Steeds RP, Townsend JN, et al. (2012) Serum phosphate is associated with left ventricular mass in patients with chronic kidney disease: a cardiac magnetic resonance study. *Heart* 98: 219–224.
41. Tonelli M, Pannu N, Manns B (2010) Oral phosphate binders in patients with kidney failure. *N Engl J Med* 362: 1312–1324.