

# Accepted Manuscript

Phytoliths As a Tool for Investigations of Agricultural Origins and Dispersals Around the World

Terry Ball, Professor, Karol Chandler-Ezell, Neil Duncan, Ruth Dickau, Thomas C. Hart, Jose Iriarte, Professor of Archaeology, Carol Lentfer, Amanda Logan, Houyuan Lu, Marco Madella, Deborah M. Pearsall, Professor Emerita, Dolores Piperno, Senior Scientist Emerita, Arlene M. Rosen, Professor, Luc Vrydaghs, Alison Weisskopf, Jianping Zhang



PII: S0305-4403(15)00247-2

DOI: [10.1016/j.jas.2015.08.010](https://doi.org/10.1016/j.jas.2015.08.010)

Reference: YJASC 4473

To appear in: *Journal of Archaeological Science*

Received Date: 5 June 2015

Revised Date: 4 August 2015

Accepted Date: 6 August 2015

Please cite this article as: Ball, T., Chandler-Ezell, K., Duncan, N., Dickau, R., Hart, T.C., Iriarte, J., Lentfer, C., Logan, A., Lu, H., Madella, M., Pearsall, D.M., Piperno, D., Rosen, A.M., Vrydaghs, L., Weisskopf, A., Zhang, J., Phytoliths As a Tool for Investigations of Agricultural Origins and Dispersals Around the World, *Journal of Archaeological Science* (2015), doi: 10.1016/j.jas.2015.08.010.

This is a PDF file of an unedited manuscript that has been accepted for publication. As a service to our customers we are providing this early version of the manuscript. The manuscript will undergo copyediting, typesetting, and review of the resulting proof before it is published in its final form. Please note that during the production process errors may be discovered which could affect the content, and all legal disclaimers that apply to the journal pertain.

1 Phytoliths As a Tool for Investigations of Agricultural Origins and Dispersals Around the  
2 World\*

3 Terry Ball<sup>1</sup>, Karol Chandler-Ezell<sup>2</sup>, Neil Duncan<sup>3</sup>, Ruth Dickau<sup>4</sup>, Thomas C. Hart<sup>5</sup>, Jose Iriarte<sup>6</sup>,  
4 Carol Lentfer<sup>7</sup>, Amanda Logan<sup>8</sup>, Houyuan Lu<sup>9</sup>, Marco Madella<sup>10</sup>, Deborah M. Pearsall<sup>11</sup>,  
5 Dolores Piperno<sup>12</sup>, Arlene M. Rosen<sup>13</sup>, Luc Vrydaghs<sup>14</sup>, Alison Weisskopf<sup>15</sup>, Jianping Zhang<sup>9</sup>

6  
7 <sup>1</sup>. Professor, Brigham Young University; <sup>2</sup>. Dept. Social & Cultural Analysis, Stephen F. Austin  
8 State University, LAN 351, P. O. Box 13047, SFA Station, Nacogdoches, TX 75962-3047;  
9 <sup>3</sup>. Stanford Archaeology Center & Dept. of East Asian Languages & Cultures; <sup>4</sup>. HD Analytical  
10 Solutions, 952 Oxford St. West, London, ON, Canada, N6H 1V3; <sup>5</sup>. Environmental Archaeology  
11 Laboratory, Anthropology Department, University of Texas at Austin; <sup>6</sup>. Professor of  
12 Archaeology, Department of Archaeology, Exeter University, England; <sup>7</sup>. School of Social  
13 Science, University of Queensland, Brisbane St Lucia, QLD 4072, Australia and Service de  
14 Préhistoire, Department des Sciences Historiques, University de Liège, 4000 Liège, Belgium; <sup>8</sup>.  
15 Department of Anthropology, Northwestern University, Evanston, IL, 60208 USA, <sup>9</sup>. Key  
16 Laboratory of Cenozoic Geology and Environment, Institute of Geology and Geophysics,  
17 Chinese Academy of Sciences, Beijing 100029, China; <sup>10</sup>. ICREA Research Professor in  
18 Environmental Archaeology, CaSEs Research Group (Complexity and Socio-Ecological  
19 Dynamics), Universitat Pompeu Fabra and IMF-CSIC, Spain; <sup>11</sup>. Professor Emerita, University  
20 of Missouri, Columbia; <sup>12</sup>. Senior Scientist Emerita, Smithsonian Tropical Research Institute,  
21 Panama and Department of Anthropology, Smithsonian National Museum of Natural History,  
22 Washington DC; <sup>13</sup>. Professor, Department of Anthropology, University of Texas at Austin;  
23 <sup>14</sup>. Centre de Recherches en Archéologie et Patrimoine, Université Libre de Bruxelles, Brussels,

24 Belgium and Research Team in Archaeo and Paleoenvironmental Sciences, Brussels; Belgium;  
25 <sup>15</sup>. Institute of Archaeology, University College London

26 Corresponding author: Dolores R. Piperno, email [pipernod@si.edu](mailto:pipernod@si.edu)

27 \*Author listing is alphabetical; all co-authors contributed equally to the manuscript.

## 28 **Abstract**

29 Agricultural origins and dispersals are subjects of fundamental importance to archaeology as  
30 well as many other scholarly disciplines. These investigations are world-wide in scope and  
31 require significant amounts of paleobotanical data attesting to the exploitation of wild  
32 progenitors of crop plants and subsequent domestication and spread. Accordingly, for the past  
33 few decades the development of methods for identifying the remains of wild and domesticated  
34 plant species has been a focus of paleo-ethnobotany. Phytolith analysis has increasingly taken its  
35 place as an important independent contributor of data in all areas of the globe, and the volume of  
36 literature on the subject is now both very substantial and disseminated in a range of international  
37 journals. In this paper, experts who have carried out the hands-on work review the utility and  
38 importance of phytolith analysis in documenting the domestication and dispersals of crop plants  
39 around the world. It will serve as an important resource both to paleo-ethnobotanists and other  
40 scholars interested in the development and spread of agriculture.

41 **Keywords:** Phytoliths, Crop Plants, Diagnostic Criteria

## 42 **1. Introduction**

43 The domestication of plants and development and spread of agriculture were transformative  
44 events in human and ecological history. Present records show that beginning around 11,000 to  
45 10,000 years ago plant cultivation and domestication developed independently in at least seven  
46 to eight regions of the world, shortly after spreading into others (Larson et al., 2014).

47 Understanding agricultural origins through archaeological enquiry is of fundamental importance  
48 for a diversity of scholarly disciplines in addition to anthropology, including genetics,  
49 environmental history, and agronomy. Accordingly, developing methods for identifying the  
50 remains of crop plants and their wild progenitors has been a focus of paleoethnobotany during  
51 the past 25 years. Phytoliths have increasingly taken their place in these endeavors alongside  
52 macro-remains, pollen, and starch grains in all regions of the world (for reviews see Pearsall,  
53 2000, 2015a; Piperno, 2006, 2009; Hart, 2014; Marsten et al., 2014). Standardization of  
54 identification criteria for various crops and wild ancestors is now accomplished, and on-line  
55 resources along with monographs and books containing numerous phytolith images for wide  
56 dissemination of criteria used to discriminate taxa are already substantial and growing. Among  
57 the web resources are: 1) the Pearsall Neotropical phytolith data base--  
58 <http://phytolith.missouri.edu>, 2) the PhytCore International Data base housed by GEPEG,  
59 University of Barcelona and co-ordinated by Rosa Albert and colleagues, which will be a single  
60 source with phytolith data bases and images from many scholars around the world—access is  
61 through [www.archeoscience.com](http://www.archeoscience.com), 3) the Institute of Archaeology, London's web page on Old  
62 World phytoliths-- [www.homepages.ucl.ac.uk/~tcrndfu/phytoliths.html](http://www.homepages.ucl.ac.uk/~tcrndfu/phytoliths.html), and 4) the Department  
63 of Archaeology, University of Sheffield (UK) Wiki online tutorial--  
64 [http://archaeobotany.dept.shef.ac.uk/wiki/index.php/Main\\_Page](http://archaeobotany.dept.shef.ac.uk/wiki/index.php/Main_Page). For monographs and books  
65 with numerous phytolith images for various world regions also see Piperno and Pearsall, 1998a,  
66 Piperno, 1988, 2006, and Kealhofer and Piperno, 1998.

67 The volume of phytolith-related work on prehistoric agriculture along with its appearance in  
68 numerous journals published in different countries is such that few archaeologists and other  
69 interested scholars may have the time or expertise to keep up with the literature. This paper

70 addresses this issue by reviewing the state-of-the-art of phytolith analysis for documenting the  
71 origin and spread of crop plants around the world. Since the last review of the subject (Piperno,  
72 2006) new crops have been investigated, refinements of identification techniques for others have  
73 taken place, and archaeological applications have expanded. Investigations also now routinely  
74 incorporate analysis of numerous wild species related to crop plants, including their wild  
75 ancestors when known, as well as constructions of large modern reference collections of regional  
76 flora. Table 1 contains a summary of findings from crops and wild progenitors that have been  
77 examined in detail (it also contains information on little understood crops not discussed in the  
78 text). More information on the phytoliths follows.

## 79 **2. Crops of the Americas**

80 A number of major and now-minor New World crops contribute phytoliths diagnostic at either  
81 the genus or species level, while others contribute forms identifiable at higher taxonomic levels  
82 such as the family, sub-family, or tribe.

### 83 *2.1 Zea mays L. (Maize)*

84 Maize is the pre-eminent cereal crop of the Americas and is now known to be native to the  
85 Central Balsas River region of tropical southwest Mexico (e.g., van Heerwaarden et al., 2011).  
86 The ability to isolate plant remains and identify maize and teosinte (wild *Zea*) in environments  
87 inimical to the preservation of macroremains, which includes maize's homeland, is fundamental  
88 to understanding the domestication and early history and spread of this crop. More than three  
89 decades of research has demonstrated that maize leaf and cob phytoliths are diagnostic and  
90 distinguishable from those of its wild ancestor, the teosinte *Zea mays* ssp. *parviglumis*, and wild  
91 non-*Zea* grasses native to North, Central, and South America. Phytoliths will be of high utility in  
92 investigations of wild maize use, early stages of domestication, and subsequent spread. Present

93 phytolith and starch grain evidence from the Central Balsas region in Mexico indicates maize  
94 was domesticated by 8700 cal BP (Piperno et al., 2009; Ranere et al., 2009), and phytolith  
95 research has contributed greatly to documenting maize spread and usage throughout the  
96 Americas (e.g., Piperno et al., 1985; Pearsall, 2000, et al., 2004; Bozarth, 1993, et al., 2009;  
97 Mulholland, 1993; Hart et al., 2003, 2007; Iriarte et al., 2004; Thompson et al., 2004; Piperno,  
98 2006:140-153; Zarillo et al., 2008; Boyd and Surette, 2010; Dickau et al., 2012; Iriarte et al.,  
99 2012; Logan et al., 2012; Hart and Lovis 2013; Hart 2014; Biwar and VanDerwarker, 2015;  
100 Corteletti et al., 2015).

101 Identification criteria employ size and morphology, and as with phytoliths from other crop  
102 plants (below), deposition of vegetative and inflorescence structures can be distinguished (leaf,  
103 stalk, seed chaff), making the phytoliths potential tools also for examining hypotheses related to  
104 teosinte and maize usage in different periods and regions (e.g., whether early cultivation was for  
105 alcohol from stalk sugar) (Piperno et al., 2009; Logan et al., 2012; Biwar and VanDerwarker,  
106 2015). Size and three-dimensional morphologies of cross-shaped phytoliths from maize  
107 distinguish maize from wild grasses other than *Zea* and *Tripsacum* (Pearsall, 1978; Piperno,  
108 1984; Piperno and Pearsall, 1993; Iriarte, 2003; Piperno, 2006:52-60) (Fig. 1). Cross-shaped  
109 phytoliths also distinguish maize from *Tripsacum* and wild *Zea* if representation of these taxa in  
110 phytolith assemblages is ruled out using other phytolith types found in their fruitcases that are  
111 diagnostic to genus (below) (Piperno and Pearsall, 1993; Piperno, 2006:60-65).

112 With respect to inflorescence phytoliths, a number of phytolith types in teosinte fruitcases (the  
113 hard structure composed of a glume and rachid that encloses the teosinte kernel) and maize cobs  
114 separate teosinte from maize (e.g., Piperno and Pearsall, 1993; Pearsall, et al., 2003; Piperno,  
115 2006:60-65), and both maize and teosinte from non-*Zea* wild grasses native to the Americas

116 (e.g., Bozarth, 1993; Mulholland, 1993; Pearsall et al., 2003; Hart et al., 2003, 2007, 2011;  
117 Thompson, 2006; Logan et al., 2012). The formation of these phytoliths is genetically controlled  
118 by the major maize domestication gene *teosinte glume architecture 1 (tga1)*, which also  
119 underwrites fruitcase hardness (lignification) and the degree to which the kernel is enveloped by  
120 the glume (Dorweiler and Doebley 1997; Piperno, 2006:61, 63). The fruitcase and cob phytolith  
121 types were formalized by Pearsall et al. (2003), who compared maize and teosinte phytoliths  
122 with those from numerous wild grasses common in the lowland Neotropics. They showed that  
123 previously described phytoliths produced in cobs and fruitcases (Bozarth, 1993; Mulholland,  
124 1993; Piperno and Pearsall, 1993), called wavy-topped and ruffle-topped rondels (rondels are  
125 often circular to oval or square) are diagnostic of maize and *Zea* (maize/teosinte), respectively, in  
126 the Neotropical lowlands (Fig. 2). Blind-testing of their protocol showed that there was little  
127 chance of mis-identifying wild grass phytoliths as maize cob bodies, although wavy-top rondels  
128 may be under-identified (Pearsall et al, 2003). Logan et al. 2012 subsequently examined  
129 phytolith production in leaf and inflorescence material of numerous species from all grass genera  
130 native to the Andes above 3000 m. and found considerable overlap occurs between some rondel  
131 types produced in maize cobs and those produced in grasses of this high elevation region. Two  
132 phytolith morphotypes were found to be unique in maize glumes and cupules in this setting; the  
133 ruffle top rondel, and a new diagnostic, the narrow elongate rondel.

134 A number of other types of fruitcase phytoliths are diagnostic of teosinte (Piperno and  
135 Pearsall, 1993; Pearsall et al., 2003, Piperno, 2006:60-65) (Fig. 3). *Tripsacum* species produce  
136 their own set of unique fruitcase phytoliths diagnostic to the genus (Fig. 4) (Piperno and Pearsall,  
137 1993; Piperno, 2006:61). A recent study using multiple discriminant analyses of rondel  
138 phytoliths also showed that the different species and sub-species of teosinte can be discriminated,

139 which will potentially enhance understanding of teosinte use before domestication when  
140 appropriately-aged sites are found (Hart et al., 2011).

## 141 2.2 Squashes and gourds of *Cucurbita* and other Cucurbitaceae

142 As with maize, squashes and gourds of the genus *Cucurbita* and other  
143 Cucurbitaceae genera were major early cultivars and domesticates of the Americas, were spread  
144 considerably outside their areas of origin, and produce phytoliths of high utility in archaeological  
145 documentation of their history. Six different species ranging from eastern North America to  
146 southern South America were domesticated in prehistory, and phytolith research points to an  
147 early Holocene domestication of species native to the lowland Neotropics of Mesoamerica (*C.*  
148 *argyrosperma*) and northern South America (*C. moschata* and *C. ecuadorensis*; the latter was  
149 probably semi-domesticated) (Piperno and Stothert, 2003; Piperno et al., 2009, Piperno, 2011).  
150 Many parts of the plants make high amounts of phytoliths; those derived from fruit rinds are the  
151 most diagnostic and are well-preserved over long periods of time. Intensive studies of different  
152 regional floras of the Americas including the Cucurbitaceae show that *Cucurbita* fruit rinds  
153 produce genus and, probably in some cases, species-specific phytoliths (see Piperno, 2006:65-  
154 66). They are spherical, aspherical, or elliptical forms with deeply and contiguously scalloped  
155 surfaces (Fig. 5) (Bozarth, 1987, 1992; Piperno, 2006:65-71, Piperno et al., 2000, 2002; Pearsall,  
156 2015b). As with maize and teosinte, the formation of these fruit phytoliths is genetically  
157 controlled by a gene called *hard rind* (*Hr*) that also underwrites fruit lignification (Piperno et al.,  
158 2002).

159 Size and/or morphology are used to discriminate between wild and domesticated *Cucurbita*  
160 species. Domesticated fruits often have much larger and thicker phytoliths than their wild  
161 ancestors and other wild squashes and there is a significant relationship between fruit size and



162 phytolith length (Piperno, 2006: 68-69 and Figs. 3.7 a-c therein). Thus, as with macro-remain  
163 analysis phytolith size can be a straightforward discriminator between wild and domesticated  
164 *Cucurbita*. Studies of modern fruits undertaken to date also suggest that species-specific  
165 identifications will sometimes be possible based on morphological attributes. Examples are *C.*  
166 *maxima*, another South American domesticate, and its wild progenitor *C. maxima* subsp.  
167 *andreana*, and varieties of *C. moschata* (Piperno, 2006:67 and Figs. 3.6 d-f therein, Piperno et  
168 al., 2000).

169 A potentially complicating factor in searching for *Cucurbita* phytoliths in ancient contexts is  
170 that because prehistoric farmers sometimes selected for softer fruits over time, and the *Hr* gene  
171 controls both hardness (lignification) and phytolith formation, soft-rinded fruits will have left a  
172 slim or no phytolith record. This particularly appears to be the case for deposits dating to the last  
173 4000 to 5000 years of prehistory or so (Piperno, 2006:143-144). On the other hand, all wild  
174 *Cucurbita* species, possessing the dominant *Hr* gene for lignification/silicification, have very  
175 hard rinds with high amounts of scalloped phytoliths, and should be visible if they were  
176 exploited. As with maize, numerous archaeological phytolith records exist for early domesticated  
177 *Cucurbita* spp. and their spread throughout the Americas (e.g., Piperno and Pearsall, 1998b;  
178 Piperno et al., 2000; Hart et al., 2003, 2007; Iriarte et al., 2004; Pearsall, 2003; Piperno and  
179 Stothert, 2003; Pohl et al., 2006; Bozarth et al., 2009; Piperno et al., 2009; Dickau et al., 2012;  
180 Corteletti et al., 2015).

181 Bottle gourd (*Lagenaria siceraria*) is indigenous to Africa from whence it spread to other  
182 continents by the early Holocene. Its large, scalloped phytoliths from fruit rinds can be identified  
183 through morphological attributes to species in the Americas (Fig. 6) (Piperno, 2006:71; Pearsall

184 et al. 2015b) and have been recovered from early Holocene-aged and later deposits in Central  
185 and South America (e.g., Piperno and Stothert, 2003, Piperno et al., 2009; Piperno, 2011).

186 2.3 The Tropical Root Crops: *Maranta* and *Calathea* (arrowroot and llerén, *Marantaceae*);  
187 *Canna* (*achira*, *Cannaceae*); *manioc* (*Manihot esculenta*, *Euphorbiaceae*)

188 These crops, grown for their underground roots, rhizomes, tubers, and corms, are, with the  
189 exception of manioc, minor root crops today. However, phytolith evidence has shown they had  
190 greater importance in prehistory (below). The Zingiberales (*Marantaceae* and *Cannaceae*) overall  
191 are abundant phytolith producers, and order, family, genus, and species level diagnostics are  
192 present (Piperno 1989, 2006; Chen and Smith, 2013; Chandler-Ezell et al. 2006; Pearsall,  
193 2015b). An important class of silicified epidermal cells are complex cylindrical phytoliths  
194 produced in seed and root epidermis of the *Marantaceae*. *Calathea allouia* seeds produce one  
195 type of diagnostic cylinder, other diagnostic forms are produced in *Maranta arundinacea* seeds  
196 and *Calathea* rhizomes (Figs. 7, 8). While not as abundantly produced as *Marantaceae* leaf  
197 phytoliths, seed and root phytoliths of this family are fairly robust and have been recovered  
198 archaeologically. *Canna* produces the type of sphere characteristic of the Zingiberales as a  
199 whole--a robust form with an irregularly angled/folded surface--while large ( $> 12 \mu\text{M}$ ), well-  
200 silicified spheres with smooth to slightly roughened surfaces (not rugose) have only been  
201 observed in *Canna* (Pearsall, 2015b).

202 Manioc, one of the major root crops of the Americas, has long been known to be a low silica  
203 accumulator (Piperno, 1988). By processing large quantities of tissues, Chandler-Ezell et al.  
204 (2006) were able to document the presence of silicified secretory bodies (resembling pores or  
205 nectaries) in manioc root rind, leaf, stem, and fruit. These occurred rarely in one wild species  
206 tested, *M. hunzikerii*. Manioc secretory phytoliths were subsequently recovered from

207 pounding/grinding stones from the Real Alto site (ca. 6000 to 5000 cal BP), in association with  
208 silicified transport tissues of roots and fruits, maize starch and phytoliths, and microfossils of  
209 arrowroot, *Calathea*, and *Canna* (Chandler-Ezell et al., 2006). A phytolith matching the  
210 description of a manioc secretory cell was recovered from the raised fields of Campo España,  
211 western Llanos de Moxos, Bolivia (R. Dickau, pers. comm.). Ecuadorean and Panamanian pre-  
212 ceramic deposits dating from ca. 9000 to 7000 BP frequently contain phytoliths from arrowroot  
213 and Ilerén, indicating these now-minor root crops were significant components of early  
214 horticultural systems in the Neotropics (Piperno, 2011).

### 215 **3. Crops of Southwest Asia**

#### 216 *3.1 Triticum and Hordeum* spp. (Wheat and Barley)

217 Wheat and barley species are heavy silica accumulators that produce many phytolith  
218 morphotypes. Morphotypes produced by silicification of epidermal cells such as short cells, long  
219 cells, cork cells, papillae, trichomes, and trichome bases are the most characteristic and  
220 diagnostic for the taxa, as well as the most often observed in archaeological samples (Figs. 9-11).  
221 Both morphotypic and morphometric studies have been conducted to name, describe and  
222 discriminate among the phytoliths produced by wheat and barley taxa. Morphotypic studies  
223 include Kaplan et al. (1992), Mulholland and Rapp (1992), Rosen (1992), Tubb et al. (1993), and  
224 Ball et al. (1993, 1999, 2001, 2009). Morphometric studies include Tubb et al. (1993) and Ball et  
225 al. (1993, 1999, 2001, 2009). Some studies report good success at discriminating among wheat  
226 and barley species at the genus level, and some success at the species level, primarily based on  
227 the morphotypic and/or morphometric differences observed in the short cell (rondel), dendritic,  
228 and/or papilla phytoliths produced by the taxa (e.g. Ball et al., 1999; Rosen, 1992; Tubb et al.,  
229 1993).

230 Moreover, some features of the anatomy displayed in the medial section of the glume,  
231 lemma, and palea epidermal tissue differ between genera of cereals and small-grained grasses.  
232 Thus, there is the potential to identify wheat or barley phytoliths and to distinguish them from  
233 wild weed grasses by examining the features of multi-cell phytoliths that are produced in the  
234 Triticeae. Distinguishing features include a combination of the wave height, amplitude and  
235 frequency of the joined dendritic long-cell walls, the size and configuration of the papillae, and  
236 the shape of the cork cells (Figs. 9-11). Confidence in these determinations varies by the  
237 numbers of characteristics visible on an individual multi-cell phytolith (Rosen, 1992).

238 Phytoliths produced by wheat or barley are regularly found in archaeological contexts and  
239 have been used to make inferences about plant and site use (e.g. Albert et al., 2008; Cabanes et  
240 al., 2009; Ishida et al., 2003; Madella et al. 2014; Portillo et al., 2012; Power et al., 2014; Rosen,  
241 2010; ; Shillito, 2011a; Zhang et al., 2013), about tool and vessel use (e.g. Anderson et al., 2000;  
242 Berlin et al., 2003; Hart, 2011; Ma et al., 2014), about irrigation (e.g. Jenkins et al., 2011;  
243 Madella et al., 2009; Rosen and Weiner, 1994) and about taphonomy (e.g. Cabanes et al., 2012;  
244 Shillito, 2011b).

#### 245 **4. Crops of East Asia**

##### 246 *4.1 Setaria and Panicum Millets (Foxtail and Broomcorn millets)*

247 Phytoliths from the genus *Setaria* and *Panicum* are highly useful for identifying *Setaria*  
248 *italica* (foxtail millet), *Setaria viridis* (green foxtail) and *Panicum miliaceum* (common or  
249 broomcorn millet) and documenting the earliest history of domesticated millets in Eurasia  
250 (García-Granero, et al., 2015; Lu, et al., 2009a, b; Zhang, et al., 2011, 2013). Research carried  
251 out by Lu *et al.* published recently has established five key, efficient diagnostic characteristics  
252 for distinguishing phytoliths from *S. italica* and *P. miliaceum* (Table 2) (Lu et al., 2009a). They

253 include: silica body shape, papillae characteristics including presence/absence, epidermal long  
254 cell patterns, and glume surface sculpture.

255 Cross-shaped silica body phytoliths are formed in the lower lemma and glumes of *S. italica*,  
256 whereas bilobate shapes are formed in those of *P. miliaceum*. However, bilobates are not  
257 diagnostic to *P. miliaceum*. Regularly arranged papillae on the surface of the upper lemma and  
258 palea are diagnostic of *S. italica*. However, it should be cautioned that the identification of *P.*  
259 *miliaceum* cannot be confirmed based solely on the absence of papillae, because papillae may  
260 sometimes not be visible on the smooth surfaces of upper lemmas and paleas in *S. italica*.

261 With respect to epidermal long cells, the epidermal long cell walls are  $\Omega$ -undulated ( $\Omega$ -I, II, III)  
262 in *S. italica*, and  $\eta$  - undulated ( $\eta$  -I, II, III) in *P. miliaceum* (Figs. 12 a, b). The different  
263 undulated patterns occur at different parts through gradual change from base and top ( $\Omega/\eta$  -I), to  
264 side ( $\Omega/\eta$  -II), and to center ( $\Omega/\eta$  -III) of the silicified structure. The ends of epidermal long  
265 cells can also be divided into a wavy type in *S. italica* and a finger type in *P. miliaceum* (Fig. 12  
266 c, d). The former is significantly shorter than the latter ( $W=4.37 \pm 0.89 \mu\text{M}$  (N= 2774) vs.  
267  $W=8.95 \pm 2.02 \mu\text{M}$  (N=3303)). Therefore, the R value (ratio of the width of endings to the  
268 amplitude of undulations) is lower in *S. italica* ( $0.33 \pm 0.11$ , N = 2774) than in *P. miliaceum*  
269 ( $0.79 \pm 0.12$ , N = 3303). With respect to surface sculpture, a ridgy line sculpture type of the  
270 upper lemma of the glume is diagnostic of *S. italica*, which is characterized by having an adnate  
271 silicon extracellular sheet and outer epidermis, forming a very heavy silicon layer that is a  
272 reliable feature in distinguishing them from *P. miliaceum*. In contrast, *P. miliaceum* has a unique  
273 smooth, spotted sculpture with an adnate silica extracellular sheet and outer epidermis, or a saw-  
274 toothed sculpture with an adnate silicon outer epidermis and hypodermal fibres.

275 In practical terms, the ideal archaeological sampling contexts for these and other cereal husks  
276 are storage and other pits, where phytoliths are more abundant than in other contexts. In order to  
277 obtain a clear outline of phytolith patterns, phase-contrast and microscopic interferometer at  
278 400× magnification are highly recommended. For identification, the undulated patterns and  
279 epidermal-ending characteristics are the most effective features for identification, because they  
280 are clearly present in almost every glume sample examined. Indeed, epidermal endings are easily  
281 divided into wavy and finger types and these combined with undulated patterns permit accurate  
282 identification without the measurement of the W and R value in most cases.

283 Differentiating crop phytoliths from their Panicoid weedy wild relatives in archaeological  
284 contexts can present challenges due to similarities of identifiable Panicoid husk morphotypes,  
285 and large pristine sheets of identifiable multicellular aggregations that identification criteria  
286 listed above are, in part, based on are sometimes rare. Having strict identification criteria as  
287 described here is essential.

288 Moving to the discrimination of *S. italica* and its wild ancestor, *S. viridis*, using phytoliths,  
289 the focus shifts to the size of phytoliths in the upper lemma and palea. It is established through a  
290 study carried out by Zhang *et al.* (2011) that the size of the  $\Omega$ III type of *S. italica* is larger than  
291 that from *S. viridis*. This means the difference between the two species is predicated on the  
292 width/expansion of the lemma and palea, also resulting in a visible difference of phytolith  
293 morphology at the center of lemma and palea, where silicified epidermal long cells are most  
294 complex, but can be differentiated. The discriminant function analysis accurately classifies a  
295 significant majority of the plants, 78.4% of foxtail millets and 76.9% of green foxtails. However,  
296 about 25% data are incorrectly classified. More samples should be analyzed to detect the  
297 presence of other potentially diagnostic features. Morphological and basic morphometric studies

298 of glumes of other minor millets also show the potential of phytoliths for differentiating these  
299 important crops in the prehistory of Eurasia and Africa (below) (Madella et al., 2014).

#### 300 4.2 *Oryza sativa* (Rice)

301 Phytoliths have played a very important role in the identification of rice remains recovered  
302 from archaeological sites. In the past two decades, a number of identification criteria have been  
303 used. To date, three distinct phytolith morphotypes have been identified: double-peaked glume  
304 cells from the rice husk, bulliform (fan-shaped or motor cell) phytoliths from bulliform cells in  
305 leaves, and articulated bilobate phytoliths from stems and leaves (Fujiwara, 1976, 1993; Lu et  
306 al., 1997; Pearsall et al., 1995; Piperno, 2006; Wang and Lu, 1993; Zhao et al., 1998; Zheng, et  
307 al., 2003; Gu et al., 2013).

308 Double-peaked glume cell phytoliths (Fig. 13) are unique to the genus *Oryza* and can  
309 separate domesticated rice from the nine wild rice species of South and Southeast Asia based on  
310 linear discriminant function analysis of three glume cell measurements (Pearsall, et al., 1995,  
311 Zhao and Piperno, 2000, Zhao, 1998, Zhao, et al., 1998). A recent study carried out by Gu *et al.*  
312 showed that three-dimensional measurements of double-peaked glume cells can also successfully  
313 distinguish cultivated from wild *Oryza* species (Gu, et al., 2013).

314 Bulliform cell phytoliths are produced in high quantity in stems and leaves, and like glume  
315 phytoliths may be common in sites (Wang and Lu, 1993). Their morphological features appear to  
316 be under genetic control and therefore directly reflect taxonomical significance (Gu, et al., 2013,  
317 Zheng, et al., 2003). In the past two decades, morphological features including surface  
318 ornamentations have been employed to distinguish domesticated from wild rice using these  
319 phytoliths (Fig. 14) (Lu et al., 2002; Ma and Fang, 2007; Huan et al., 2014). Pearsall, et al.,  
320 (1995) found that bulliform size alone could not distinguish rice from related species. Lu et al.

321 (2002) studied the number of scale-like ornamentations at the edge of bulliform phytoliths from  
322 seven species of wild rice and six species of domesticated rice and found the number of scale-  
323 like decorations in wild species is less than 9, while 8 to 14 are present in domesticated rice. This  
324 feature as a distinctive characteristic of cultivated rice needs further validation (Qin, 2012; Wang  
325 and Lu 2012); however, to date, phytoliths with greater than 9 scale-like decorations are widely  
326 used signatures of domestication (Lu et al., 2002; Wu et al., 2014) (Fig. 14). According to this  
327 criterion, recent studies indicate that rice domestication began around 10,000 BP in the Lower  
328 Yangtze, China (Wu et al., 2014).

329 Bilobates with scooped ends and a parallel arrangement in leaf tissue are typical of the  
330 genera in the Oryzae tribe, in contrast to the characteristic features of *Oryza* plants (Pearsall et  
331 al., 1995; Lu, et al., 1997; Xiuji et al., 2014). Pearsall et al. (1995) and Gu et al. (2013) showed  
332 that this bilobate was produced by all members of the tribe, and cannot be used to distinguish any  
333 one genus, including *Oryza*.

334 Phytoliths can also be used as a tool for understanding the development and spread of rice  
335 (*Oryza* sp.) arable systems using arable weed ecologies. Different proportions of crop weeds  
336 appear in different field systems and the ratios of phytolith morphotypes in soils from these  
337 fields reflect this. Modern analogues were created from sediment samples from traditionally  
338 farmed fields using correspondence analysis (Canoco) to demonstrate the constituents of the  
339 samples, groups of phytolith morphotypes, from different field types reflect their arable system.  
340 When applied to archaeological samples the results demonstrate changing farming practices over  
341 time (Fuller and Weisskopf, 2011; Weisskopf et al., 2014).

342 The development of water management in rice farming can be seen using ratios of specific  
343 phytoliths from grass weeds in rice fields (Weisskopf et al., in press). Ratios of phytolith



344 morphotypes that are genetically predisposed to take up silica in grasses (short cells) to those that  
345 take up water under circumstances of greater transpiration (long cells and stomata) (Madella  
346 et al, 2009, Jenkins et al 2011) were used to develop a wet versus dry index on samples from  
347 traditionally farmed modern rice fields. This method was applied to phytoliths assemblages  
348 collected from palaeosols and the corresponding archaeological sites in the Lower Yangtze  
349 Valley. The results show a change from probable decrue farming on the river's edge at  
350 Tianluoshan (4800-4300BC) to small drier dugout fields at Caoxieshan (3950-3700BC) to large  
351 managed irrigated fields at Maoshan (3000-2300BC) (Weisskopf, et al. in press).

## 352 **5. Crops of Southern and Southeast Asia**

### 353 *5.1 Musa spp. (true bananas)*

354 The domestication and spread of true bananas belonging to the genus *Musa* is a complicated  
355 issue. Domesticated bananas derive from the Eumusa (*Musa acuminata* [AA] and *M. balbisiana*  
356 [BB]) and Australimusa (*M. maclayi*) sections of Musaceae. Domestication appears to have  
357 involved intra and interspecific hybridization, polyploidization and somaclonal mutations,  
358 ending in seed sterility and parthenocarpy (De Langhe et al., 2009). Accordingly, phytoliths  
359 produced by the Musaceae sections Eumusa and Australimusa have great relevance in  
360 archaeological research. Humans likely spread domesticated Eumusa throughout the tropics.  
361 Archaeological evidence for bananas helps researchers make inferences about crop diffusion and  
362 how people in antiquity managed plant resources in tropical rainforests. Outside Asia, any  
363 evidences for *Musa* phytoliths are indicative of cultivation (Vrydaghs and De Langhe, 2003).  
364 Phytoliths can be produced in various plant tissues and organs of bananas (e.g., Lentfer, 2009a;  
365 Chen and Smith, 2013) with seed and leaf phytoliths being the most studied to date. In  
366 archaeological contexts, finding both seed and leaf phytoliths together may indicate an early

367 phase of domestication, while finding only leaf phytoliths could indicate a latter phase. Lentfer  
368 (2009) and Perrier et al. (2011) discuss and illustrate several seed phytolith morphotypes and  
369 conclude that they are diagnostic at the genus, section, and sometimes seed levels for Musaceae  
370 (Figs. 15, 16). Lentfer (2009a) further discusses other globular and polygonal morphotypes  
371 produced in various plant parts and uses morphometric analysis to separate those produced in  
372 seeds from those produced in other plant organs and tissues.

373 In leaves, silicification of cells surrounding the vascular tissue of *Musa* and *Ensete* species  
374 produces volcaniform (volcano shaped) phytoliths (Ball et al., 2006) (Fig. 17). Both morphotypic  
375 (Ball et al., 2006; Lentfer and Green, 2004; Mbida et al., 2001; Vrydaghs et. al., 2009; Wilson,  
376 1985) and morphometric studies (Ball et al., 2006; Lentfer, 2009a; Vrydaghs et. al., 2009) have  
377 been conducted to distinguish among the volcaniform phytoliths produced by different *Musa* and  
378 *Ensete* species. These phytoliths can be discriminated at the genus level allowing bananas to be  
379 distinguished from the ensets in archaeological records (Lentfer, 2009a; Mbida et al., 2001), but  
380 reliable identification at the species level is still wanting.

381 Archaeological evidences for *Musa* phytoliths have been recently summarized by Donohue  
382 and Denham (2009), with the earliest evidence for banana cultivation at Kuk Swamp in highland  
383 New Guinea, dated at 7000-6500 years ago (Denham et al., 2003). This suggests an early and  
384 long process of domestication of *M. acuminata* ssp. *banksii* in the area. Archaeological evidence  
385 of Musaceae in Melanesia (Horrocks et al., 2009; Lentfer et al., 2010), in Polynesia (Khan et al.,  
386 2014), and early evidence (from 5000 BP) in Southeast Asia falls within the natural range of  
387 several wild banana species (Kealhofer, 2003) making it difficult to disentangle cultivation  
388 versus exploitation of wild plants, but later evidence in east Asia seems to suggest human agency  
389 (Zhao and Piperno, 2000). The earliest findings in South Asia are from sites of the greater Indus

390 Valley at Loteshwar (3681 to 2243 cal BC) in North Gujarat, India (García-Granero et al., 2015)  
391 and the Mature Harappan levels (2500-1900 BC) of Kot Diji, Pakistan (Fuller and Madella,  
392 2002). The evidence is scant and may actually highlight contacts (trade) with the Western Ghats  
393 to the south more than local cultivation. Cameroon Nkang evidence represents, with all  
394 probability, the dispersal of cultivars to West Africa by at least 2500 years ago (Mbida et al.,  
395 2001).

## 396 **6. Crops of Africa**

397 *6.1 Ensete ventricosum (Ethiopian banana, Abyssinian banana), Lagenaria siceraria (bottle*  
398 *gourd), Sorghum bicolor (sorghum), Pennisetum glaucum (pearl millet)*

399 Crop plants native to Africa have seen the smallest amount of focused research. *Ensete*  
400 *ventricosum* was domesticated in antiquity in the eastern highlands of Africa for its starchy stem  
401 and is an important crop today. The genus has a pantropical distribution. Its phytoliths have been  
402 studied largely as parts of analyses to compare and distinguish them from those of *Musa* spp.  
403 (see above), and it indeed appears that *Ensete* can be identified to at least the genus (Figs. 15,  
404 17). Work is needed to determine if wild and domesticated species can be distinguished. Another  
405 crop of African origin is the bottle gourd. It can be identified to species in American contexts,  
406 where wild varieties are not native (see above under New World). Work is needed on wild  
407 *Lagenaria* in Africa and Asia to determine if wild and domesticated varieties can be  
408 discriminated.

409 A handful of recent studies has outlined phytolith production in inflorescences of African  
410 domesticated grains and their wild progenitors (Logan 2012; Madella et al., 2013; Novello and  
411 Barboni 2015; Radomski and Neumann 2011). However, with only one study on phytolith  
412 production in the inflorescences of wild grasses (Novello and Barboni 2015), there is still

413 considerable work to do vis-à-vis isolating specific morphotypes diagnostic to the genus or  
414 species level. Consequently, most Africanist phytolith researchers favor quantitative or semi-  
415 quantitative methodologies that take into account multiple phytolith forms for strong positive  
416 identifications.

417 The most promising potential for identification using phytoliths appears to be *Sorghum*  
418 *bicolor*, likely domesticated relatively late (c. 2000 years ago), but probably used in a wild but  
419 cultivated form many millennia earlier. Of special diagnostic interest is heavily silicified  
420 elongate dendritic cell forms described by several authors (Novello and Barboni 2015; Radomski  
421 and Neumann 2011; Logan and D'Andrea 2008 in Logan 2012: 96-100; Madella et al., in press).  
422 These forms appear to be quite distinctive, occur in some quantity in domesticated sorghum  
423 inflorescence (36.9% of all phytoliths), but are uncommon in wild sorghum or other grasses  
424 studied to date (Radomski and Neumann 2011:157). In addition, one complex short cell form,  
425 with a bilobate to rondel base and saddle-like top may be distinctive to *Sorghum bicolor*  
426 (Radomski and Neumann 2011). Since very little comparative work on wild African grass  
427 inflorescences has been completed, it is difficult to establish at what level these forms are  
428 diagnostic, but early results look very promising.

429 Pearl millet (*Pennisetum glaucum*) is the oldest domesticated crop on the continent (~4500  
430 bp; Manning et al., 2011), yet little is known about phytolith production in this important crop  
431 (see Radomski and Neumann, 2011 for a discussion).

## 432 **7. Discussion**

433 Phytolith analysis has substantially contributed to study and understanding of agricultural  
434 origins and dispersals around the world. Genus- or species-level identifications are routinely  
435 achieved for crop plants, and when a crop is found outside of the natural distribution of it and its

436 closest wild relatives (as, for example, maize in South America and eastern North America and  
437 bananas in Africa), genus-level identification alone serves the purpose of securely identifying it.  
438 Research by numerous investigators over decades summarized here has, therefore, made it  
439 possible to develop consensus identification criteria for archaeobotanists to employ and for other  
440 scholars to bring to bear in formulating broad conceptual and synthetic works. A recent paper, in  
441 fact, that reviews potential starting dates for the onset of the proposed new geologic epoch, the  
442 Anthropocene, defines phytoliths as one of two primary stratigraphic markers and one of a few  
443 potential auxiliary stratotypes for the origin and expansion of farming globally (Lewis and  
444 Maslin, 2015). Phytoliths are also named as a stratotype marker for Lewis and Maslin's (2015)  
445 suggested choice of the event that would mark the Anthropocene beginning, the "New-Old  
446 World Collision" at the date of 1610.

447 Phytoliths can and have served a number of different roles in agricultural origin and dispersal  
448 research: 1) as stand-alone markers of cultivation and domestication, 2) complementary avenues  
449 of plant identification in multi-proxy research, 3) identifiers at more refined taxonomic levels  
450 than possible with other fossil markers, or of taxa and plant structures often not visible with other  
451 fossils, 4) markers of crop presence and human environmental modification in paleo-ecological  
452 records, 5) markers of range expansions of crops and other plant taxa. Increasingly, phytolith and  
453 starch grain analyses are being used in tandem in many regions of the world, significantly  
454 increasing the recoverability of a number of New and Old World crop species, including major  
455 root crops, that leave slim or no phytolith records, and allowing finer discrimination of others,  
456 along with identifications of different structures of the same crop (a few examples are Chandler  
457 et al., 2006; Zarillo et al., 2008; Duncan et al., 2009; Lentfer, 2009b; Piperno, 2009, et al., 2009;  
458 Boyd and Surette, 2010; Dickau et al., 2007, 2012; Yang et al., 2012a, b, 2014; Liu et al., 2011;

459 Iriarte et al., 2012; Madella et al., 2014; Barton and Torrence, 2015; Corteletti et al., 2015;  
460 García-Granero et al., 2015) (see Table 1 for crop plants and wild progenitors known to have  
461 diagnostic starch grains). As with other fossil indicators of plant exploitation and agriculture  
462 such as macro-remains of seeds and their chaffs (e.g., Wilcox, 2007; Fritz and Nesbitt, 2014), the  
463 taxonomic levels to which phytolith identification can be made will differ from species to  
464 species, and at times the separation of important taxa will not be possible. There are also many  
465 crops and wild progenitors for which phytolith analysis may not turn out to be of significant  
466 utility, although further work is needed on many.

467 Issues such as phytolith formation, taphonomy, and preservation, encompassing initial  
468 phytolith production in plants and their subsequent depositional and post-depositional histories  
469 are not the foci of this paper. These aspects have been well-considered elsewhere and the reader  
470 can consult a number of reviews summarizing information accumulated from numerous studies  
471 on crop and other plants from around the world (e.g., Pearsall, 2000, 2014, 2015a; Piperno, 1985,  
472 1988, 2006; Madella, et al., 2009; Madella and Lancelotti 2012). Briefly, the following points  
473 can be made. With regard to phytolith formation, genetic control of phytolith formation is  
474 demonstrated in a number of crops and their wild ancestors, including *Cucurbita* (fruit rinds),  
475 *Zea* (fruitcases and cobs), *Oryza* (leaves and probably glumes), and also wheat awns (Dorweiler  
476 and Doebley, 1997; Piperno et al., 2002; Zheng et al., 2003; Ma et al., 2006, 2007; Peleg et al.,  
477 2010; Gu et al., 2013). This means that the visibility of these phytoliths in archaeological sites  
478 should not have been biased by environmental variability. In other crop/wild ancestor pairs  
479 where production of individual phytoliths has not to this point been linked to specific genetic  
480 loci, studies of different populations from different environmental regions demonstrate that  
481 phytoliths used in identification are both consistently produced in modern flora and commonly

482 recovered from archaeological sites. In sum, these and other studies indicate a considerable  
483 degree of genetic and metabolic control over the mechanisms and patterns of silica deposition  
484 (e.g., Hodson et al., 2005; Piperno, 2006; Madella et al., 2009; Tsartsidou et al., 2007; Pearsall,  
485 2014).

486 Investigations of infraspecific variability in phytolith formation also document which  
487 phytolith types do appear to be significantly affected by environmental factors such as water  
488 availability and bedrock chemistry, such that particular morphotypes are/are not produced in  
489 certain environments, or formed in such low amounts that they would be difficult to recover  
490 (e.g., Piperno, 2006; Madella et al., 2009; Tsartsidou et al., 2007). Phytoliths involved (e.g., from  
491 jigsaw-shaped epidermal phytoliths of woody taxa; long epidermal cells of grass leaves) are not  
492 usually among the corpus of silicified forms used in crop identification and discussed herein. As  
493 discussed above, in wheat, barley, and rice an increased silicification of long epidermal cells in  
494 their husks in well-watered conditions provide a means to investigate ancient irrigation and water  
495 regimes.

496 Other issues such as depositional and post-depositional histories, including preservation and  
497 downward phytolith movement in soils and sediments, have seen detailed investigation, in part  
498 by crop plant researchers who have taken into account and controlled for these factors (a few  
499 studies and reviews include Harvey and Fuller, 2005; Piperno, 1985, 1988, 2006; Fishkis et al.,  
500 2009, 2010; Madella, et al., 2009, Madella and Lancelotti 2012; Devos et al., 2013; Pearsall  
501 2014, 2015a; Cabanes et al., 2015). It is well-understood, for example, that phytoliths follow the  
502 biogenic silica curve for erosion and dissolution, so that when the pH exceeds a value above  
503 about 9--an unusual circumstance in archaeological contexts that did not influence records  
504 discussed here--some phytolith corrosion and dissolution may at times be expected (see reviews

505 in Piperno, 1988:46-47 and Piperno, 2006:22, 108, and recent experimental work by Cabanes et  
506 al., 2015). Other recent efforts combining phytolith analysis with micromorphology also serve to  
507 address the various issues outlined (Vrydaghs et al., this issue).

508 The utility of phytoliths for investigating agricultural origins and dispersals around the world  
509 is clear and despite the considerable range of crop examples and geographic regions heretofore  
510 investigated, possibilities for future expansions of research are many. Moreover, micro-fossil  
511 assemblage composition and distribution can provide information about currently under-  
512 investigated domestication processes related to crop improvement in prehistory, such as the  
513 development of parthenocarpy (seedless fruits) and of new crop varieties in general. Phytolith  
514 (and starch) studies are complementary to all aspects of archaeological investigation aimed at  
515 understanding agricultural origins, and given well-proven and potential outcomes we should now  
516 be at a stage where such studies are incorporated into broader archaeological framework as a  
517 matter of routine research.

#### 518 **Acknowledgements**

519 Many organizations and granting agencies have supported our work often over many years.  
520 We thank all who supported and made our research possible.

521

522

523

524

525

526

527



528 **References Cited**

- 529 Albert, R.M., Shahack-Gross, R., Cabanes, D., Gilboa, A., Lev-Yadun, S., Portillo, M.,  
530 Sharon, I., Boaretto, E., Weiner, S., 2008. Phytolith-rich layers from the Late Bronze and Iron  
531 Ages at Tel Dor (Israel): Mode of formation and archaeological significance. *J. Archaeol.Sci.* 35,  
532 57–75.
- 533 Anderson, N., Ball, T.B., Thompson, R.G., Gardner, J.S., 2000. A study of phytoliths  
534 extracted from food residues taken from a Bronze Age jar. *Abstr. 3<sup>rd</sup> Int. Meet Phytolith Res.* p.2.
- 535 Ball, T. B., Brotherson, J.D., Gardner, J.S., 1993. A typologic and morphometric study of  
536 variation in phytoliths from einkhorn wheat (*Triticum monococcum* L.). *Can. J. Bot.* 71, 1182–  
537 1192.
- 538 Ball, T.B., Gardner, J.S., Anderson, N., 1999. Identifying inflorescence phytoliths from  
539 selected species of wheat (*Triticum monococcum*, *T. dicoccon*, *T. dicoccoides*, and *T. aestivum*) and  
540 barley (*Hordeum vulgare* and *H. spontaneum*). *Am. J. Bot.* 86, 1615–1623.
- 541 Ball, T.B., Gardner, J.S., Anderson, N., 2001. An approach to identifying inflorescence  
542 phytoliths from selected species of wheat and barley, in: Meunier, J.D., Colin, F. (Eds.),  
543 *Phytoliths: Applications in Earth Sciences and Human History.* A.A. Balkema Publishers,  
544 Exton, PA., pp. 289–302.
- 545 Ball, T.B., Ehlers, R., Standing, M.D., 2009. Review of typologic and morphometric analysis  
546 of phytoliths produced by wheat and barley. *Breed. Sci.* 59, 505–512.
- 547 Ball, T.B., Vrydaghs, L., Van den Hauwe, I., Manwaring, J., De langhe, E., 2006.  
548 Differentiating banana phytoliths: Wild and edible *Musa acuminata* and *Musa balbisiana*. *J.*  
549 *Archaeol. Sci.* 33, 1228–1236.

- 550 Berlin, A.M., Ball, T.B., Thompson, R., Kittleson, D., Herbert, S.C., 2003. Ptolemaic  
551 agriculture, "Syrian wheat", and *Triticum aestivum*. J. Archaeol. Sci. 30, 115–121.
- 552 Biwer, M.E., VanDerwarker, A.M., 2015. Paleoethnobotany and ancient alcohol production:  
553 A mini-review. Ethnobot. Lett. 6, 28–31.
- 554 Bozarth, S.R., 1987. Diagnostic opal phytoliths from rinds of selected *Cucurbita* species.  
555 Amer. Anti. 52, 607–615.
- 556 Bozarth, S.R., 1990. Diagnostic opal phytoliths from pods of selected varieties of common  
557 beans (*Phaseolus vulgaris*). Amer. Anti. 55, 98–104.
- 558 Bozarth, S.R., 1992. Classification of opal phytoliths formed in selected dicotyledons native  
559 to the Great Plains, in: Rapp, G., Jr., Mulholland, S.C. (Eds.), Phytolith Systematics: Emerging  
560 Issues. Plenum Press, New York, pp. 193–214.
- 561 Bozarth, S., 1993. Maize (*Zea mays*) cob phytoliths from Central Kansas Great Bend Aspect  
562 archaeological site. Plains. Anthro. 38:279–286.
- 563 Bozarth, S.R., Price, K., Woods, W.I., Neves, E.G., Rebellato, R., 2009. Phytoliths and Terra  
564 Preta: The Hatahara Site Example, in: Woods, W.I., Teixeira, W.G., Lehmann, J., Steiner, C.,  
565 WinklerPrins, A.M.G.A., Rebellato, L. (Eds.), Amazonian Dark Earths: Wim Sombroek's  
566 Vision. Springer, New York, pp. 85–98.
- 567 Boyd, M., and Surette, C. 2010. Northernmost precontact maize in North America. Amer.  
568 Anti. 75, 117–133.
- 569 Cabanes, D., Burjachs, F., Exposito, I., Rodriguez, A., Allue, E., Euba, I., Verges, J., 2009.  
570 Formation processes through archaeobotanical remains: The case of the Bronze Age levels in El  
571 Mirador cave, Sierra de Atapuerca, Spain. Quat. Int. 193, 160–173.

- 572 Cabanes, Dan., Gadot, Y., Cabanes, M., Finkelstein, I., Weiner, S., Shahack-Gross, R., 2012.  
573 Human impact around settlement sites: a phytolith and mineralogical study for assessing site  
574 boundaries, phytolith preservation, and implications for spatial reconstructions using plant  
575 remains. *J. Archaeol. Sci.* 39, 2697–2705.
- 576 Cabanes, D., Shahack-Gross, R. 2015. Understanding Fossil Phytolith Preservation: The Role  
577 of Partial Dissolution in Paleoeology and Archaeology. *PLoS ONE* 10(5): e0125532.  
578 doi:10.1371/journal.pone.0125532
- 579 Chandler-Ezell, K., Pearsall, D.M., Zeidler, J.A., 2006. Root and tuber phytoliths and starch  
580 grains document manioc (*Manihot esculenta*), arrowroot (*Maranta arundinacea*), and llerén  
581 (*Calathea* sp.) at the Real Alto site, Ecuador. *Econ. Bot.* 60, 213–220.
- 582 Chen, S.T., Smith, S.Y., 2013. Phytolith variability in Zingiberales: A tool for the  
583 reconstruction of past tropical vegetation. *Palaeogeogr. Palaeoclimatol. Palaeoecol.* 370, 1–12.
- 584 Corteletti, R., Dickau, R., DeBlasis, P., Iriarte, J., 2015. Revisiting the economy and mobility  
585 of southern proto-Jê (Taquara-Itararé) groups in the southern Brazilian highlands: starch grain  
586 and phytolith analyses from the Bonin site, Urubici, Brazil. *Jour. Archaeol. Sci.* 58, 46–61.
- 587 De Langhe, E., Vrydaghs, L., de Maret, P., Perrier, X., Denham, T., 2009. Why bananas  
588 matter: An introduction to the history of banana domestication, in: Denham, T., De Langhe, E.,  
589 Vrydaghs, L. (Eds.), *Ethnobot. Res. Appl. Special Issue: History of Banana Domestication*, 7,  
590 165–177.
- 591 Denham, T.P., Haberle, S.G., Lentfer C., Fullagar, R., Field, J., Therin, M., Porch N.,  
592 Winsborough, B., 2003. Origins of agriculture at Kuk Swamp in the Highlands of New Guinea.  
593 *Science* 301, 189–193.
- 594 Dickau, R., Ranere, A.J., Cooke, R.G., 2007. Starch grain evidence for the preceramic

- 595 dispersals of maize and root crops into tropical dry and humid forests of Panama. Proc. Natl.  
596 Acad. Sci. U.S.A. 104, 3651–3656.
- 597 Dickau, R., Bruno, M., Iriarte, J., Prumers, H., Betancourt, C.J., Holst, I., Mayle, F.E., 2012.  
598 Diversity of cultivars and other plant resources used at habitation sites in the Llanos de Mojos,  
599 Beni, Bolivia: evidence from macrobotanical remains, starch grains, and phytoliths. Jour.  
600 Archaeol. Sci. 39, 357–370.
- 601 Donohue, M., Denham, T., 2009. Banana (*Musa* spp.) domestication in the Asia- Pacific  
602 region: Linguistic and archaeobotanical perspectives, in: Denham, T., De Langhe, E., Vrydaghs,  
603 L. (Eds.), *Ethnobot. Res. Appl. Special Issue: History of Banana Domestication*, 7, 293–332.
- 604 Dorweiler, J.E., Doebley, J., 1997. Developmental analysis of teosinte glume architecture1: a  
605 key locus in the evolution of maize (*Poaceae*). *Amer. Jour. Bot.* 84, 1313–1322.
- 606 Duncan, N., Pearsall, D.M., Benfer, R.A. Jr. 2009. Gourd and squash artifacts yield starch  
607 grains of feasting foods from preceramic Peru. *Proc. Natl. Acad. Sci. USA* 106, 13202–13206.
- 608 Fritz, G., Nesbitt, M., 2014. Laboratory analysis and identification of plant macroremains, in:  
609 Marston, J.M., d’Alpoim Guedes, J., Warinner, C. (Eds.), *Method and Theory in*  
610 *Paleoethnobotany*. University of Colorado Press, Boulder, pp.
- 611 Fuller, D. Weisskopf, A.R. 2011 The early rice project: from domestication to global  
612 warming. *Archaeol. Int.* 13/14, 44–51
- 613 Fujiwara, H., 1976. Fundamental studies in plant opal analysis. 1. On the silica bodies of  
614 motor cell of rice plants and their near relatives, and the method of quantitative analysis,  
615 *Archaeol. Nat. Sci.* 9, 15–29.
- 616 Fujiwara, H., 1993. Research into the history of rice cultivation using plant opal analysis, in:  
617 Pearsall, D.M., Piperno, D.R. (Eds.), *Current Research in Phytolith analysis: Applications in*

618 Archaeology and Paleoecology, MASCA., University of Pennsylvania Museum, Philadelphia,  
619 vol. 10, pp. 147–158.

620 Fuller, D.Q., Madella, M., 2002. Issues in Harappan archaeobotany: Retrospect and prospect,  
621 in: Settar, S., Korisettar, R. (Eds.), *Indian Archaeology in Retrospect, Volume II: Protohistory—*  
622 *Archaeology of the Harappan Civilization*. Manohar Publishers, New Delhi, pp. 317–90.

623 García-Granero J.J., Lancelotti C., Madella M., Ajithprasad P., 2015. Plant processing  
624 activities at Loteshwar (North Gujarat, India): a micro-botanical approach, in: Lefèvre V., Didier  
625 A., Mutin B. (Eds.), *South Asian Archaeology and Art 2012. Vol. 1: Man and Environment in*  
626 *Prehistoric and Protohistoric South Asia: New Perspectives*. Brepols Publishers, Turnhout,  
627 Belgium, pp. 99–116.

628 García-Granero, J., Lancelotti, C., Madella, M., 2015. A tale of multi-proxies: integrating  
629 macro- and microbotanical remains to understand subsistence strategies. *Veg. Hist. Archaeobot.*  
630 24, 121–133.

631 Gu, Y., Zhao, Z., Pearsall, D.M., 2013. Phytolith morphology research on wild and  
632 domesticated rice species in East Asia, *Quat. Intl.* 287, 141–148.

633 Häkkinen, M., 2013. Reappraisal of sectional taxonomy in *Musa* (Musaceae). *Taxon* 62, 809-  
634 813.

635 Hart, J.P., Lovis, W.A., 2013. Reevaluating what we know about the histories of maize in  
636 Northeastern North America: A review of current evidence. *Jour. Archaeolog. Res.* 21, 175–216.

637 Hart, J., 2014. A critical assessment of current approaches to investigations of the timing,  
638 rate, and adoption trajectories of domesticates in the Midwest and Great Lakes, in: Ravielle,  
639 M.E., Lovis, W.A. (Eds.), *Reassessing the Timing, Rate, and Adoption Trajectories of*

- 640 Domestic Use in the Midwest and Great Lakes. Occasional Papers No. 1, Midwest  
641 Archeological Conference, Inc., pp. 136–161.
- 642 Hart, J.P., Thompson, R.G., Brumbach, H.J., 2003. Phytolith evidence for early maize (*Zea*  
643 *mays*) in the Northern Finger Lakes Region of New York. *Amer. Anti.* 68, 619–640.
- 644 Hart, J.P., Brumbach, H.J., Lusteck, R., 2007. Extending the phytolith evidence for early  
645 maize (*Zea mays* ssp. *mays*) and squash (*Cucurbita* sp.) in central New York. *Amer. Anti.* 72,  
646 563–583.
- 647 Hart, J.P., R. G. Matson, R.G., Thompson, R.G., Blake, M. 2011. Teosinte inflorescence  
648 phytolith assemblages mirror *Zea* taxonomy. *PLoS ONE* 6, e18349.
- 649 Hart, T.C., 2011. Evaluating the usefulness of phytoliths and starch grains found on survey  
650 artifacts. *J. Archaeol. Sci.* 38, 3244–3253.
- 651 Hodson, M. J., White, P. J., Mead, A., and Broadley, M. R., 2005. Phylogenetic variation in  
652 the silicon composition of plants. *Ann. Bot.* 96, 1027–1046.
- 653 Horrocks, M., Bedford, S., Spriggs, M., 2009. A short note on banana (*Musa*) phytoliths in  
654 Lapita, immediately post-Lapita and modern period archaeological deposits from Vanuatu. *J.*  
655 *Archaeol. Sci.* 36, 2048–2054.
- 656 Huan, X., Li, Q., Ma, Z., Jiang, L., Yang, X., 2014. Fan-shaped phytoliths reveal the process  
657 of rice domestication at Shangshan site, Zhejiang Province. *Quat. Sci.* 34, 106–113 (in Chinese).
- 658 Iriarte, J., 2003. Assessing the feasibility of identifying maize through the analysis of  
659 cross-shaped size and three-dimensional morphology of phytoliths in the grasslands of  
660 southeastern South America. *J. Archaeol. Sci.* 30, 1085–1094.

- 661 Iriarte, J., Holst, I., Marozzi, O., Listopad, C., Alonso, E., Rinderknecht, A., Montaña, J.  
662 2004. Evidence for cultivar adoption and emerging complexity during the mid-Holocene in the  
663 La Plata Basin, Uruguay. *Nature* 432, 614–617.
- 664 Iriarte, J., Power, M.J., Rostain, S., Mayle, F.E., Jones, H., Watling, J., Whitney, B.S.,  
665 McKey, D., 2012. Fire-free land use in pre-1492 Amazonian savannas. *Proc. Natl. Acad. Sci. U.*  
666 *S. A.* 109, 6473–6478.
- 667 Ishida, S., Parker, A.G., Kennet, D., Hodson, M. J., 2003. Phytolith analysis from the  
668 archaeological site of Kush, Ras al-Khaimah, United Arab Emirates. *Quat. Res.* 59, 310–321.
- 669 Jenkins, E., Jamjoum, K., Al Nuimat, S., 2011. Irrigation and phytolith formation: an  
670 experimental study, in: Mithen, S., Black, E. (Eds.), *Water, Life and Civilisation: Climate,*  
671 *Environment and Society in the Jordan Valley.* Cambridge University Press, Cambridge, pp.  
672 347–372.
- 673 Khan, J.G., Horrock, M., Nieuwoudt, M.K., 2014. Agriculture, domestic production, and site  
674 function: Microfossil analyses and Late Prehistoric landscapes of the Society Islands. *Econ. Bot.*  
675 68, 246–263.
- 676 Kaplan, L., Smith, M.B., Sneddon L.A., 1992. Cereal grain phytoliths of Southwest Asia and  
677 Europe, in: Rapp, G.R., Mulholland, S.C. (Eds.), *Phytolith Systematics.* Plenum Press, New  
678 York, pp. 149–174.
- 679 Kealhofer, L., 2003. Looking into the gap: Land use and the tropical forests of southern  
680 Thailand. *Asian Perspect.* 42, 72–95.
- 681 Kealhofer, L., Piperno, D.R., 1998. Opal Phytoliths in Southeast Asian Flora. *Smithsonian*  
682 *Contrib. Bot. No.* 88, pp. 1-39.
- 683

- 684 Larson, G., Piperno, D., Allaby, R.G., Purugganan, M.D., Andersson, L., Arroyo-Kalin, M.,  
685 Barton, L., Climer Vigueira, C., Denham, T., Dobney, K., Doust, A.N., Gepts, P., Gilbert,  
686 M.T.P., Gremillion, K.J., Lucas, L., Lukens, L., Marshall, F.B., Olsen, K.M., Piress, J.C.,  
687 Richersont, P.J., Rubio de Casas, R., Sanjur, O.I., Thomas, M.G., Fuller, D.Q., 2014. Current  
688 perspectives and the future of domestication studies. *Proc. Natl. Acad. Sci. U.S.A.* 111, 6139–  
689 6146.
- 690 Lentfer, C.J., 2009a. Tracing Domestication and Cultivation of Bananas from Phytoliths: An  
691 update from Papua New Guinea, in: Denham, T., De Langhe, E., Vrydaghs, L. (Eds.), *Ethnobot.*  
692 *Res. Appl. Special Issue: History of Banana Domestication*, 7, 247–270.
- 693 Lentfer C.J., 2009b. Going bananas in Papua New Guinea: a preliminary study of starch  
694 granule morphotypes in Musaceae fruit. *Ethnobot. Res. App.* 7, 217-238.
- 695 Lentfer, C.J., Green, R. C., 2004. Phytoliths and the evidence for banana cultivation at the  
696 Lapita reber-Rakival site on Watom Island, Papua New Guinea, in: Attenbrow, V., Fullagar, R.  
697 (Eds.), *A Pacific Odyssey: Archaeology and Anthropology in the Western Pacific. Papers in*  
698 *Honour of Jim Specht, Records of the Australian Museum*, 29, 75–88.
- 699 Lentfer, C., Pavlides, C., and Specht, J., 2010. Natural and human impacts in a 35 000-yr  
700 vegetation history in central New Britain, Papua New Guinea. *Quat. Sci. Rev.* 29, 3750-3767.
- 701 Lewis, S.L., Maslin, M.A. 2015. Defining the Anthropocene. *Nature* 519, 171–180.
- 702 Liu, L., Ge, W., Bestel, S., Jones, D., Shi, J., Song, Y., Chen, X., 2011 Plant exploitation of  
703 the last foragers at Shizitan in the Middle Yellow River Valley China: evidence from grinding  
704 stones. *Jour. Archaeol. Sci.* 12, 3524–3532.
- 705 Liu, L., Ma, S., Cui, J., 2014. Identification of starch granules using a two-step identification  
706 method, *J. Archaeol. Sci.* 52, 421–427.



- 707 Logan, A.L., 2012. A History of Food Without History: Food, Trade, and Environment in  
708 West-Central Ghana in the Second Millennium AD (PhD Dissertation). University of Michigan,  
709 Ann Arbor.
- 710 Logan, A.L., Hastorf, C.A., Pearsall, D.M., 2012. “Let’s drink together”: Early ceremonial  
711 use of maize in the Titicaca Basin. *Lat. Amer. Anti.* 23, 235–258.
- 712 Lu, H., Wu, N., Liu, B., 1997. Recognition of Rice Phytoliths, in: Pinilla, A., Juan-  
713 Tresserras, J., Machado, M.J. (Eds.), *The State of the art Phytoliths in Soils and Plants*, Centro de  
714 Ciencias Medioambientales, Madrid.
- 715 Lu, H., Liu, Z., Wu, N., Berne, S., Saito, Y., Liu, B., Wang, L., 2002. Rice domestication and  
716 climatic change: phytolith evidence from East China. *Boreas* 31, 378–385.
- 717 Lu, H., Zhang, J., Wu, N., Liu, K-b, Xu, D. and Li, Q. 2009a. Phytolith Analysis for the  
718 Discrimination of Foxtail Millet (*Setaria italica*) and Common Millet (*Panicum miliaceum*).  
719 *PLoS ONE* 4, e4448.
- 720 Lu, H., et al., 2009b. Earliest domestication of common millet (*Panicum miliaceum*) in  
721 East Asia extended to 10,000 years ago. *Proc. Natl. Acad. Sci. USA* 106, 7367–7372.
- 722 Ma, X., Fang, J., 2007. Silicas in leaves of eight wild rice species, *Acta Bot. Boreali-*  
723 *Occidentalia Sinica*, 27, 1531–1536.
- 724 Ma, J. F., Tamai, K., Yamaji, N., Mitani, N., Konishi, S., Katsuhara, M., Ishiguro, M.,  
725 Murata, Y., and Yano, M., 2006. A silicon transporter in rice. *Nature* 440, 688–691.
- 726 Ma, J. F., Yamaji, N., Mitani, N., Tamai, K., Konishi, Fujiwara, T., Katsuhara, M., and Yano,  
727 M. 2007. An efflux transporter of silicon in rice. *Nature* 448, 209–212.

- 728 Ma, Z., Li, Q., Huan, X., Yang, X., Zheng, J., Ye, M., 2014. Plant microremains provide  
729 direct evidence for the functions of stone knives from the Lajia site, northwestern China. *Chin.*  
730 *Sci. Bull.* 59, 1151–1158.
- 731 Madella, M., Jones, M., Echlin, P., Powers-Jones, A., Moore, M., 2009. Plant water  
732 availability and analytical microscopy of phytoliths: Implications for ancient irrigation in arid  
733 zones. *Quat. Int.* 193, 32–40.
- 734 Madella, M., Lancelotti, C. 2012. Taphonomy and phytoliths: A user manual. *Quat. Int.* 275,  
735 76–83.
- 736 Madella, M., Jones, M.K., Ecklin, P., Powers-Jones, A., Moore, M., 2009. Plant water  
737 availability and analytical microscopy of phytoliths: Implications for ancient irrigation in arid  
738 zones. *Quat. Int.* 193, 32–40.
- 739 Madella, M., Lancelotti, C., García-Granero, J.J., 2013. Millet microremains—an alternative  
740 approach to understand cultivation and use of critical crops in Prehistory. *Archaeol. Anthropol.*  
741 *Sci.* on-line first DOI 10.1007/s12520-013-0130-y.
- 742 Madella, M., Garcia-Granero, J., Out, W., Ryan, P., Usai, D., 2014. Microbotanical evidence  
743 of domestic cereals in Africa 7000 Years Ago. *PLoS ONE*, 9 (10).
- 744 Manning, K., Pelling, R., Higham, T., Schwenniger, J-L., Fuller, D., 2011. 4500-Year old  
745 domesticated pearl millet (*Pennisetum glaucum*) from the Tilemsi Valley, Mali: new insights  
746 into an alternative cereal domestication pathway. *J. Archaeol. Sci.* 38(2), 312–322.
- 747 Marston, J.M., d'Alpoim Guedes, J., and Warinner, C., Eds., 2014. *Method and Theory in*  
748 *Paleoethnobotany*. University of Colorado Press, Boulder.

- 749 Mbida, C., Doutrelepont, H., Vrydaghs, L., Swennen, R., Swennen, R., Beeckman, H., De  
750 Langhe, E., de Maret, P., 2001. First archaeological evidence of banana cultivation in central  
751 Africa during the third millennium before present. *Veg. Hist. Archaeobot.* 10, 1–6.
- 752 Mulholland, S.C., 1993. A test of phytolith analysis at Big Hidatsa, North Dakota, in:  
753 Pearsall, D.M., Piperno, D.R. (Eds.) *Current Research in Phytolith Analysis: Applications in*  
754 *Archaeology and Paleoecology. MASCA Research Papers in Science and Archaeology,*  
755 *University of Pennsylvania, Philadelphia, vol. 10, pp. 131–145.*
- 756 Mulholland, S.C., Rapp, G.R., 1992. A morphological classification of grass silica-bodies,  
757 in: Rapp, G.R., Mulholland, S.C. (Eds.), *Phytolith Systematic.* Plenum Press, New York, pp. 65–  
758 89.
- 759 Novello, A., Barboni, D., 2015. Grass inflorescence phytoliths of useful species and wild  
760 cereals from sub-Saharan Africa. *J. Archaeol. Sci.* 59, 10–22.
- 761 Pearsall, D.M., 1978. Phytolith analysis of archeological soils: Evidence for maize  
762 cultivation in formative Ecuador. *Science* 199, 177–178.
- 763 Pearsall, D.M., 2000. *Paleoethnobotany: a Handbook of Procedures.* 2<sup>nd</sup> edition. Academic  
764 Press, San Diego.
- 765 Pearsall, D.M., 2003. Plant food resources of the Ecuadorean Formative: An overview and  
766 comparison to the Central Andes, in: *Archaeology of Formative Ecuador.* Raymond, J.S.,  
767 Burger, R.L. (Eds.). *Dumbarton Oaks, Washington, D.C., pp. 213–257.*
- 768 Pearsall, D.M. 2014. Formation processes of pollen and phytoliths, in: Marston, J.M., J.  
769 d’Alpoim Guedes, J., Warinner, C. (Eds), *Method and Theory in Paleoethnobotany.* University  
770 of Colorado Press, Boulder, pp.

- 771 Pearsall, D.M., 2015a. Paleoethnobotany. A Handbook of Procedures, Third edition. Left  
772 Coast Press, Walnut Creek, CA.
- 773 Pearsall, D.M., 2015b. "The Phytoliths in the Flora of Ecuador Project: Order Tables."  
774 [<http://phytolith.missouri.edu>].
- 775 Pearsall, D.M., Piperno, D.R., Dinan, E.H., Umlauf, R., Zhao, Z.J., Benfer, R.A., 1995.  
776 Distinguishing rice (*Oryza Sativa* Poaceae) from wild *Oryza* Species through phytolith analysis -  
777 results of preliminary research, Econ. Bot. 49, 183–196.
- 778 Pearsall, D.M., Chandler-Ezell, K., Chandler-Ezell, A., 2003. Identifying maize in  
779 neotropical sediments using cob phytoliths. J. Archaeol. Sci. 30, 611–627.
- 780 Pearsall, D.M., Chandler-Ezell, K., Zeidler, J.A., 2004. Maize in ancient Ecuador: results of  
781 residue analysis of stone tools from the Real Alto site. Journal of Archaeological Science  
782 31:423–442.
- 783 Peleg, Z., Saranga, Y., Fahima, T., Aharoni, A., Elbaum, R., 2010. Genetic control over silica  
784 deposition in wheat awns. Physiol. Plantarum, 140, 10–20.
- 785 Perrier, X., De Langhe, E., Donohue, M., Lentfer, C., Vrydaghs, L., Bakrya, F., Carreel, F.,  
786 Hippolytea, I., Horrya, J-P., Jenny, C., Leboth, V., Risteruccia, A-M., Tomekpea, K.,  
787 Doutreleponte, H., Balli, T., Manwaringi, J., de Maretj, P., Denhamk, T., 2011. Multidisciplinary  
788 perspectives on banana (*Musa* spp.) domestication. Proc. Natl. Acad. Sci. U.S.A. 108, 11311–  
789 11318.
- 790 Piperno, D.R., 1984. A comparison and differentiation of phytoliths from maize and wild  
791 grasses: use of morphological criteria. Amer. Anti. 49, 361–383.
- 792 Piperno, D.R., 1985. Phytolith taphonomy and distributions in archaeological sediments from  
793 Panama. J Archeol Sci 12:246-267.

- 794 Piperno, D.R., 1988. *Phytolith Analysis: An Archaeological and Geological Perspective*.  
795 Academic Press, San Diego.
- 796 Piperno, D.R., 1989. The occurrence of phytoliths in the reproductive structures of selected  
797 tropical angiosperms and their significance in tropical paleoecology, paleoethnobotany, and  
798 systematics. *Rev. Palaeobot. Palyn.* 61, 147–173.
- 799 Piperno, D.R., 2006. *Phytoliths: A Comprehensive Guide for Archaeologists and*  
800 *Paleoecologists*. AltaMira Press, New York.
- 801 Piperno, D.R., 2009. Identifying crop plants with phytoliths (and starch grains) in  
802 Central and South America: a review and an update of the evidence. *Quat. Int.*  
803 193, 146–159.
- 804 Piperno, D.R., 2011. The origins of plant cultivation and domestication in the New World  
805 tropics. *Curr. Anthropol.* 52(S4), S453–S470.
- 806 Piperno, D.R., Pearsall, D.M., 1993. Phytoliths in the reproductive structures of maize and  
807 teosinte: implications for the study of maize evolution. *J. Archaeol. Sci.* 20, 337–362.
- 808 Piperno, D.R., Pearsall, D.M., 1998a The Silica Bodies of Tropical American Grasses:  
809 Morphology, Taxonomy, and Implications for Grass Systematics and Fossil Phytolith  
810 Identification. *Smithsonian Contrib. Bot.* Number 85, pp. 1-40.
- 811 Piperno, D.R., Pearsall, D.M., 1998b. *The Origins of Agriculture in the Lowland Neotropics*.  
812 Academic Press, San Diego.
- 813 Piperno, D.R., Stothert, K.E., 2003. Phytolith evidence for early Holocene *Cucurbita*  
814 domestication in southwest Ecuador. *Science* 299, 1054–1057.
- 815 Piperno, D.R., Dillehay, T., 2008. Starch grains on human teeth reveal early broad crop diet  
816 in northern Peru. *Proc. Natl Acad Sci USA* 105, 19622–19627.

- 817 Piperno, D.R., Andres, T.C., Stothert, K.A., 2000. Phytoliths in *Cucurbita* and other  
818 Neotropical Cucurbitaceae and their occurrence in early archaeological sites from the lowland  
819 American tropics. *J. Archaeol. Sci.* 27, 193–208.
- 820 Piperno, D., Holst, I., Wessel-Beaver, L., Andres, T.C., 2002. Evidence for the control of  
821 phytolith formation in *Cucurbita* fruits by the *hard rind (Hr)* genetic locus: archaeological and  
822 ecological implications. *Proc. Nat. Acad. Sci. USA* 99, 10923–10928.
- 823 Piperno, D.R., Clary, K.H., Cooke, R.G., Ranere, A.J., Weiland, D., 1985. Pre-ceramic maize  
824 in Central Panama: phytolith and pollen evidence. *Amer. Anthro.* 87, 871–878.
- 825 Piperno, D.R., Ranere, A.J., Holts, I., Iriarte, J., Dickau, R., 2009. Starch grain and phytolith  
826 evidence for early ninth millennium B.P. maize from the Central Balsas River Valley, Mexico.  
827 *Proc. Natl. Acad. Sci. U.S.A.* 106, 5019–5024.
- 828 Pohl, M.D., et al., 1996. Early agriculture in the Maya lowlands. *Lat. Amer. Anti.* 7, 355–372.
- 829 Portillo, M., Valenzuela, S., Albert, R.M., 2012. Domestic patterns in the Numidian site of  
830 Althiburos (northern Tunisia): The results from a combined study of animal bones, dung and  
831 plant remains. *Quat. Int.* 275, 84–96.
- 832 Power, R.C., Rosen, A.M., Nadel, D., 2014. The economic and ritual utilization of plants at  
833 the Raqefet Cave Natufian site: The evidence from phytoliths. *J. Anthropol. Archaeol.* 33, 49–  
834 65.
- 835 Qin, L., 2012. Archaeobotany research and expectation on Chinese agriculture origin, in:  
836 School of Archaeology and Museology Peking University, The Center of the Study of Chinese  
837 Archaeology in Peking University (Eds.), *Archaeological Research*, Cultural Relics Press,  
838 Beijing, pp. 260–315 (in Chinese).

- 839 Radomski, K., Neumann, K., 2011. Grasses and Grinding Stones: Inflorescence Phytoliths  
840 from Modern West African Poaceae and Archaeological Stone Artifacts. In: Fahmy, A.,  
841 Kahlheber, S., D'Andrea, A.C. (Eds.), *Windows on the African Past: Current Approaches to*  
842 *African Archaeobotany*. Africa Magna Verlag, Frankfurt, pp. 153–166.
- 843 Ranere, A.J., Piperno, D.R., Holst, I., Dickau, R., Iriarte, J., 2009. The cultural and  
844 chronological context of early Holocene maize and squash domestication in the Central Balsas  
845 River Valley, Mexico. *Proc. Natl. Acad. Sci. USA* 106, 5014–5018.
- 846 Rosen, A.M., 1992. Preliminary identification of silica skeletons from Near Eastern  
847 archaeological sites: An anatomical approach, in: Rapp, G.R., Mulholland, S.C. (Eds.), *Phytolith*  
848 *Systematic*. Plenum Press, New York, pp. 129–147.
- 849 Rosen AM., 2010. Natufian plant exploitation: Managing risk and stability in an environment  
850 of change. *Eurasian Prehistory* 7, 117-131.
- 851 Rosen, A.M., Weiner, S., 1994. Identifying ancient irrigation: A new method using opaline  
852 phytoliths from emmer wheat. *J. Archaeol. Sci.* 21, 125–132.
- 853 Shillito, L.M., 2011a. Simultaneous thin section and phytolith observations of finely  
854 stratified deposits from Neolithic catalhoyuk, Turkey: Implications for paleoeconomy and Early  
855 Holocene paleoenvironment. *J. Quat. Sci.* 26, 576–588.
- 856 Shillito, L.M., 2011b. Taphonomic observations of archaeological wheat phytoliths from  
857 Neolithic Catalhöyük, Turkey, and the use of conjoined phytolith size as an indicator of water  
858 availability. *Archaeom.* 53, 631–641.
- 859 Thompson, R.G., Hart, J.P., Brumbach, H.J., Lusteck, R., 2004. Phytolith evidence for  
860 twentieth-century BP maize in northern Iroquoia, *Northeast Anthropol.* 68, 25-40.

- 861 Thompson, R.G., 2006. Documenting the presence of maize in Central and South America  
862 through phytolith analysis of food residues, in: Zeder M.A., Bradley, D.G., Emshwiller, E.,  
863 Smith, B.D., (Eds.). Documenting Domestication: New Genetic and Archaeological Paradigms.  
864 University of California Press, Berkeley, pp 82–98.
- 865 Tubb, H.J., Hodson, M.J., Hodson, G.C., 1993. The inflorescence papillae of the Triticeae: a  
866 new tool for taxonomic and archaeological research. *Ann. Bot.* 72, 537–545.
- 867 Tsartsidou, G., Lev-Yadun, S., Albert, R.-M., Miller-Rosen, A., Efstratiou, N., Weiner, S.,  
868 2007. The phytolith archaeological record: strengths and weaknesses evaluated based on a  
869 quantitative modern reference collection from Greece. *Jour. Archaeol. Sci.* 34, 1262–1275.
- 870 van Heerwaarden, J., Doebley, J., Briggs, W.H., Glaubitz, J.C., Goodman, M.M., Sánchez  
871 González, J.J., Ross-Ibarra, J., Gaut, B.S., Eguiarte, L. 2011. Genetic signals of origin, spread,  
872 and introgression in a large sample of maize landraces. *Proc. Nat. Acad. Sci. USA* 108,1088–  
873 1092.
- 874 Vrydaghs, L., Ball, T.B., Volkaert, H., Vand den Houwe, I., Manwaring, J., De Langhe, E.  
875 2009. Differentiating the volcaniform phytolith of bananas: *Musa acuminata*, in: Denham, T., De  
876 Langhe, E., Vrydaghs, L. (Eds.), *Ethnobot. Res. Appl. Special Issue: History of Banana*  
877 *Domestication*, 7, 239–246.
- 878 Vrydaghs, L., De Langhe, E., 2003. Phytoliths: An opportunity to rewrite history, in: INIBAP  
879 Annual Report 2002. International Network for the Improvement of Banana and Plantain,  
880 Montpellier, France, 14–17.
- 881 Wang, C., Lu, H., 2012. Research progress of fan shaped phytoliths of rice and relevant  
882 issues. *Quat. Sci.* 32, 269–281 (in Chinese).



- 883 Wang, Y.J., Lu, H.Y., 1993. *The Study of Phytoliths and its Applications*. China Ocean  
884 Press, Beijing (in Chinese).
- 885 Weisskopf, A. Harvey, E. Kingwell-Banham, E. Kajale, M. Mohanty, R. Fuller, D.Q., 2014.  
886 Archaeobotanical implications of phytolith assemblages from cultivated rice systems, wild rice  
887 stands and macro-regional patterns. *J. Archaeol. Sci.* 51, 43–53.
- 888 Weisskopf, A. Qin, L. Ding, J. Ding, P. Sun, G. Fuller, D.Q. Applying phytoliths to the  
889 reconstruction of rice agriculture: From wet to dry and back again in the Neolithic Lower  
890 Yangtze. *Antiquity* (in press)
- 891 Wilcox, G. 2007. The adoption of farming and the beginnings of the Neolithic in the  
892 Euphrates valley: cereal exploitation between the 12th and 8th millennia cal BC, in: Colledge, S.,  
893 Connelly, J. (Eds.), *The Origins and Spread of Domestic Plants in Southwest Asia and Europe*.  
894 University College London Institute of Archaeology Publications. Walnut Creek, CA: Left Coast  
895 Press, Inc., pp. 21–36.
- 896 Wilson, S.M., 1985. Phytolith analysis at Kuk, an early agricultural site in Papua New  
897 Guinea. *Archaeol. Ocean.* 20, 231–238.
- 898 Wu, Y., Jiang, L., Zheng, Y., Wang, C., Zhao, Z., 2014. Morphological trend analysis of rice  
899 phytoliths during the early Neolithic in the Lower Yangtze. *J. Archaeol. Sci.* 49, 326–331.
- 900 Yang, X., Zhabng, J., Perry, L., Ma, Z., Wan, Z., Li, M., Diao, X., Lu, H., 2012a. From the  
901 modern to the archaeological: Starch grains from millets and their wild relatives in China. *J.*  
902 *Archaeol. Sci.* 39, 247–254.
- 903 Yang, X., Wan, Z., Perry, L., Lu, H., Wang, Q., Zhao, C., Li, J., Xie, F., Yu, J., Cui, T.,  
904 Wang, T., Li, M., Ge, Q., 2012b. Early millet use in northern China, *Proc. Natl. Acad. Sci.* 109,  
905 3726–3730.

906 Yang, X., Ma, Z., Li, Q., Perry, L., Huan, X., Wan, Z., Li, M., Zheng, J., 2014. Experiments  
907 with Lithic Tools: Understanding Starch Residues from Crop Harvesting, *Archaeometry* 56,  
908 828–840.

909 Zarrillo, S., Pearsall, D.M., Raymond, J.S., Tisdale, M.A., Quon, D.J., 2008. Directly dated  
910 starch residues document early formative maize (*Zea mays* L.) in tropical Ecuador. *Proc. Natl.*  
911 *Acad. Sci. USA* 105,5006–5011.

912 Zhang, J.P., Lu, H.Y., Wu, N.Q., Yang, X.Y., Diao, X.M., 2011. Phytolith Analysis for  
913 Differentiating between Foxtail Millet (*Setaria italica*) and Green Foxtail (*Setaria viridis*), *PLoS*  
914 *ONE* 6, e19726.

915 Zhao, Z., Piperno, D.R., 2000. Late Pleistocene/Holocene Environments in the middle  
916 Yangtze River Valley, China and rice (*Oryza sativa*) domestication: The phytolith evidence.  
917 *Geoarchaeology* 15, 203–222.

918 Zhao, Z.J., 1998. The Middle Yangtze region in China is one place where rice was  
919 domesticated: phytolith evidence from the Diaotonghuan Cave, Northern Jaingxi. *Antiquity* 72,  
920 885–897.

921 Zhang, J.P., Lu, H.Y., Wu, N.Q., Qin, X.G., Wang, L., 2013. Palaeoenvironment and  
922 agriculture of ancient Loulan and Milan on the Silk Road. *The Holocene* 23, 208–217.

923 Zhao, Z.J., Pearsall, D.M., Benfer, R.A., Piperno, D.R., 1998. Distinguishing rice (*Oryza*  
924 *sativa* poaceae) from wild *Oryza* species through phytolith analysis, II: Finalized method. *Econ.*  
925 *Bot.* 52, 134–145.

926 Zheng, Y.F., Dong, Y.J., Matsui, A., Udatsu, T., Fujiwara, H., 2003. Molecular genetic basis  
927 of determining subspecies of ancient rice using the shape of phytoliths, *J. Archaeol. Sci.* 30,  
928 1215–1221.

929 **Figure Captions**

930 Fig. 1. Typical cross-shaped phytolith three-dimensional structures from maize, teosinte, and  
931 non-*Zea* grasses. Maize produces high proportions of Variant 1 (mirror-image) cross-shapes  
932 while many wild grasses produce high proportions of other types unlike maize. Balsas teosinte,  
933 maize's wild progenitor, produces many Variant 2 cross-shapes in its leaves unlike maize. From  
934 Piperno, 2006.

935 Fig. 2. Wavy-top (top, bottom left) and ruffle-top rondels (bottom, right) from maize. Ruffle-  
936 top rondels occur much more frequently in teosinte than maize. From Piperno, 2006.

937 Fig. 3. The various kinds of non-rondel phytoliths found in teosinte fruitcases. Those  
938 diagnostic of teosinte are in the center (a, oblong, one-half decorated; b, elongated spiney; c,  
939 elongated with one wavy and one serrated edge). Phytoliths a-f occur in some non-*Zea* grasses,  
940 but they like the others are always produced in teosinte and can be used to rule out its presence if  
941 absent from samples. The phytoliths range in size from about 10 (phytolith f) to 35  $\mu\text{M}$  in  
942 diameter (phytolith b). From Piperno, 2006.

943 Fig. 4. *Tripsacum* fruitcase phytoliths. Unlike those of teosinte or maize, they have serrated  
944 edges and ridges across the top. From Piperno, 2006.

945 Fig. 5. Scalloped phytoliths from the domesticated species *Cucurbita moschata*. Wild squash  
946 phytoliths have the same morphology but are often much smaller than in domesticates. From  
947 Piperno, 2006.

948 Fig. 6. Scalloped phytoliths from bottle gourd. Unlike in *Cucurbita*, scallops are irregularly-  
949 shaped and one hemisphere of the phytolith is flat and undecorated. Size ranges from 64 to 112  
950  $\mu\text{M}$ . From Piperno, 2006.

951 Fig. 7. Seed phytoliths from arrowroot. From Piperno, 2006.

952 Fig. 8. Seed phytolith from Ilerén. It is 40  $\mu\text{M}$  long. From Piperno, 2006.

953 Fig. 9. An articulated aggregation of inflorescence bract phytoliths from *Triticum*  
954 *aestivum* showing the long cell wave patterns and papillae characteristic of *Triticum* sp. Photo by  
955 Arlene M. Rosen from modern plant phytolith reference collection at ICREA, University of  
956 Barcelona, courtesy of Rosa M. Albert.

957 Fig. 10. An articulated aggregation of inflorescence bract phytoliths from *Hordeum*  
958 *vulgare* showing the long cell wave patterns and papillae characteristic of *Hordeum* sp. Photo by  
959 Arlene M. Rosen from modern plant phytolith reference collection at ICREA, University of  
960 Barcelona, courtesy of Rosa M. Albert.

961 Fig. 11. Drawing of a papilla. Domesticated grasses have a consistent papilla diameter found  
962 throughout the multi-cell, as measured by the outer ring of the papillae, while wild ‘weed’ grass  
963 will exhibit a range of papillae diameters. From Piperno, 2006; originally reprinted from Tubb et  
964 al. (1993).

965 Fig. 12. Undulated patterns and ending structures of epidermal long cells in the upper lemma  
966 and palea for the two millet species.  $\Omega$ -undulated pattern (A) and wavy type (C) of ending  
967 structure in *S. italic*;  $\eta$ -undulated pattern (B) and finger type (D) of ending structure in *P.*  
968 *miliaceum*.

969 Fig. 13. Double-peaked glume cell phytoliths from *Oryza*. From Piperno, 2006. Originally  
970 re-printed from Zhao et al., 1998.

971 Fig. 14. Comparison of the scale-like decorations on bulliform phytoliths in domesticated and  
972 wild rice. Modified from Fujiwara (1976).

973 Fig. 15. Seed phytoliths from *Musa acuminata* subsp. *banksii* (left) and *Ensete*, right. From  
974 Piperno, 2006; originally courtesy of Carol Lentfer.

975 Fig. 16. Seed phytoliths from *Musa ingens*. From Piperno, 2006; originally courtesy of Carol  
976 Lentfer.

977 Fig. 17. A comparison of leaf phytoliths from *Ensete* and *Musa*. From Piperno, 2006. The  
978 schematic drawings were originally from Mbida Mindzie et al., 2001 and the photographs were  
979 courtesy of Carol Lentfer.

980

981

982

983

984

985

986

987

988

989

990

991

992

993

994

995

996

997

**Table 1. Crop Plant Phytolith Production and Levels of Taxonomic Specificity**

Plant	Phytolith Production	Taxonomic Specificity	Plant Part
<b>The Americas</b>			
<i>Zea mays</i> (maize) <sup>WA, SG-S</sup>	Very high	Species	Cob (glume/cupule)
<i>Zea mays</i> (maize)	High	Species	Leaf
<i>Zea mays</i> (maize)	Low to moderate	Species	Husk
<i>Cucurbita</i> spp. <sup>WA, SG-G and S</sup> (squashes and gourds)	Very high High	Genus and Species Family (Genus?)	Fruit rind Leaf
<i>Lagenaria siceraria</i> <sup>WA?, SG-G</sup> (bottle gourd)	Moderate High	Species Family	Fruit rind Leaf
<i>Sicana odorifera</i> <sup>WA?</sup> (cassabanana)	High	Genus	Fruit rind
<i>Manihot esculenta</i> <sup>SG-S</sup> (manioc or yuca)	Very low	Genus	Most plant parts
<i>Maranta arundinacea</i> <sup>SG-G</sup> (arrowroot)	Very high	Species	Seed
<i>Calathea allouia</i> (Ilerén) <sup>SG-G</sup>	Very high Moderate	Species Species	Seed Rhizome
<i>Ananas comosus</i> (pineapple)	Very high	Family	Leaf and seed
<i>Canna edulis</i> (achira)	Very high	Genus (?)	Leaf
<i>Phaseolus vulgaris</i> <sup>SG-G</sup> (common bean)	Moderate	Genus	Pod
<i>Phaseolus lunatus</i> <sup>SG-G</sup> (lima bean)	Moderate	Genus	Pod
<i>Helianthus annuus</i>	High	Family (Genus?)	Achene
Arecaceae (palms)	Very high	Family or subfamily	All parts
<b>Southwest Asia</b>			
<i>Triticum</i> spp. <sup>SG-T</sup> (Einkorn, other wheats)	Very high	Genus?*	Inflorescence bracts (glumes, lemmas, and paleae)
<i>Triticum</i> spp. <sup>SG-T</sup> (Emmer, other wheats)	Very high	Genus?*	Inflorescence bracts (glumes, etc.)
<i>Hordeum</i> spp. <sup>SG-T</sup> (Barley, other wheats)	Very high	Genus?*	Inflorescence bracts (glumes, etc.)
<b>East Asia</b>			
<i>Oryza sativa</i> (rice)	Very high Very high	Species Species (?)	Glume Leaf (bulliform cells)
<i>Setaria</i> spp. <sup>SG-G</sup> (Foxtail millets)	Very high	Genus**	Glume
<i>Panicum</i> spp. <sup>SG-G</sup> (Broomcorn millets)	Very high	Genus**	Glume

<b>Southern and Southeast Asia</b>			
*** <i>Musa</i> spp. <sup>SG-G</sup> (bananas)	High High	Genus Genus, Section, Species	Leaf Seed
<i>Benincasa hispida</i> (wax gourd)	Very high	Genus (?)	Fruit rind
<i>Cocos nucifera</i> (coconut)	Very high	Family or sub- family	All plant parts
<b>Africa</b>			
<i>Lagenaria siceraria</i> (bottle gourd)	Moderate	Genus?*****	Fruit rind
<i>Ensete ventricosum</i> (Abyssinian or Ethiopian bananas)	High	Genus	Leaf and seed
<i>Sorghum bicolor</i> (sorghum)	High	?see text	Glume

WA= phytoliths are diagnostic in the wild ancestor. WA? = wild ancestor is unknown, or known but not yet studied for phytoliths. SG = starch grains diagnostic of genus (SG-G), species (SG-S), or tribe (SG-T) occur in the same or other parts of the plants as listed for phytoliths (e.g., Maize kernels; *Cucurbita* fruit flesh; Phaseolus seeds; arrowroot roots; Ilerén roots; wheat, barley, and millet grains; banana fruit flesh). SG? = potentially diagnostic starch but further study is needed. *Hordeum* starch grains have been identified to genus in SW Asia and China. *Setaria* and *Panicum* domesticated millet starch grains may be identifiable to species in some cases. Starch grains from other Old World crops may have considerable promise (e.g., various legumes and root crops). For starch grain references, see Chandler et al., 2006; Zarillo et al., 2008; Duncan et al., 2009; Piperno, 2009, Piperno and Dillehay, 2008, Piperno et al., 2009; Boyd and Surette, 2010; Dickau et al., 2007, 2012; Lentfer, 2009b; Yang et al., 2012a, b, 2014; Liu et al., 2011; Iriarte et al., 2012; Madella et al., 2014; Barton and Torrence, 2015; Corteletti et al., 2015; García-Granero et al., 2015.

\*Wild/domesticated wheat and barley phytoliths can be distinguished from each other at the genus level and from common weed genera expected in archaeological contexts in certain regions of southwestern Asia. More work is needed with other wild taxa outside of *Triticum* and *Hordeum* to more broadly apply phytolith identification schemes when congeneric non-cultigens may be present. Certain kinds of domesticated wheats can currently be distinguished from others and from barley using specific types of phytoliths (e.g., papillae) or combinations of them.

\*\*Foxtail and broomcorn millet phytoliths can be distinguished from each other. Further work is needed to develop distinguishing criteria for them and their weedy wild Panicoid relatives. \*\*\*There is a new revision for *Musa* proposed by Häkkinen (2013) on the basis of new molecular data, which has not been used in this review so that the taxonomic names used here are consistent with the published phytolith work cited. In the new revision, the *Rhodochlamys* section was merged into the *Eumusa* section and renamed *Musa*. The *Australimusa* and *Ingentimusa* sections were merged into the *Callimusa* section. The new section kept the name *Callimusa* (Häkkinen, 2013).\*\*\*\*Bottle gourd has been studied with relation to regional flora in the New World only. African and other Old World research is needed to establish its diagnostic potential there.

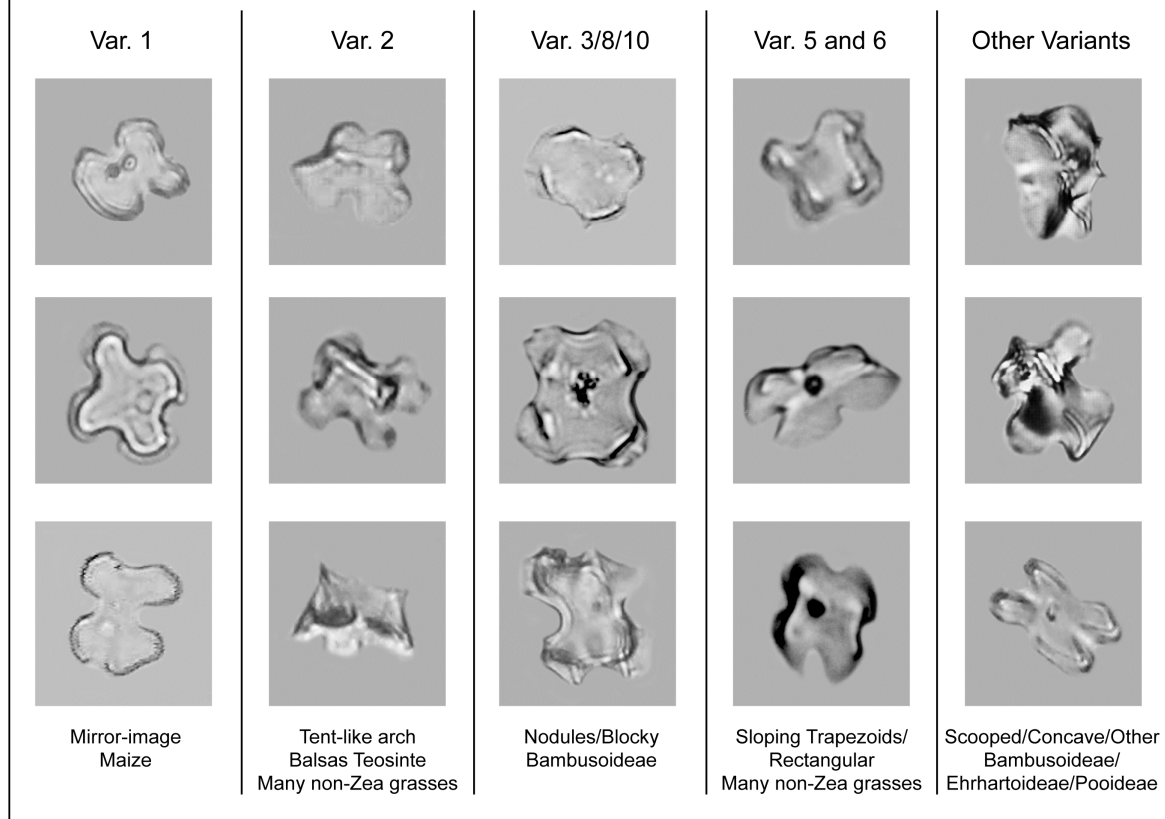
See Bozarth, 1990, Piperno, 2006 and Pearsall, 2015b for information on *Phaseolus* pod phytoliths, and Piperno, 2006 for discussions of various palm phytoliths. Cassabanana (*Sicana odorifera*) is a little understood Neotropical domesticate of possible Amazonian origin. Its genus-diagnostic scalloped phytoliths (Piperno, 2006:71 and Fig. 3.7e therein) have not as yet been isolated from archaeological deposits, but further work may elucidate its origins and history. *Benincasa hispida* (the wax gourd) phytoliths appear promising compared to New World Cucurbitaceae but Asian study is needed.

Table 2. Discrimination of *S. italica* and *P. miliaceum*

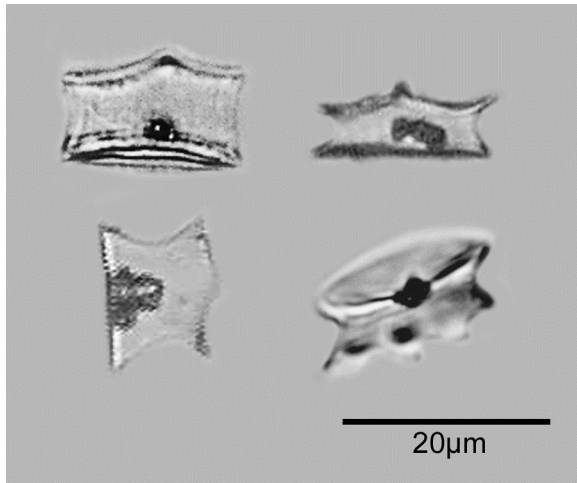
No	Parts of Spikelet	Diagnostic Criteria	<i>Setaria italica</i> (Foxtail millet)	<i>Panicum miliaceum</i> (Common millet)
1	Lower lemma and glume	Shape of silica bodies	Cross-shaped type	Bilobate-shaped type
2	Upper lemma and palea	Presence or absence of papillae	Regularly arranged papillae	Smooth surface without papillae
3		The undulated patterns of epidermal long cells	$\Omega$ -undulated ( $\Omega$ -I, II, III)	$\eta$ -undulated ( $\eta$ -I, II, III)
4		The ending structures of epidermal long cells	Cross wavy type	Cross finger type
			$W = 4.37 \pm 0.89 \mu\text{m}$	$W = 8.95 \pm 2.02 \mu\text{m}$
			$R = 0.33 \pm 0.11$	$R = 0.79 \pm 0.12$
5		Surface sculpture	Surface ridgy line sculpture	Smooth, spotted sculpture or saw-toothed sculpture



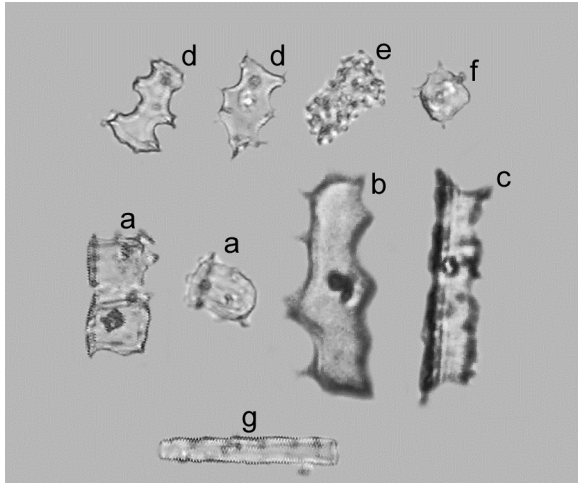
## Leaf Cross-shaped bodies 3-D Variants



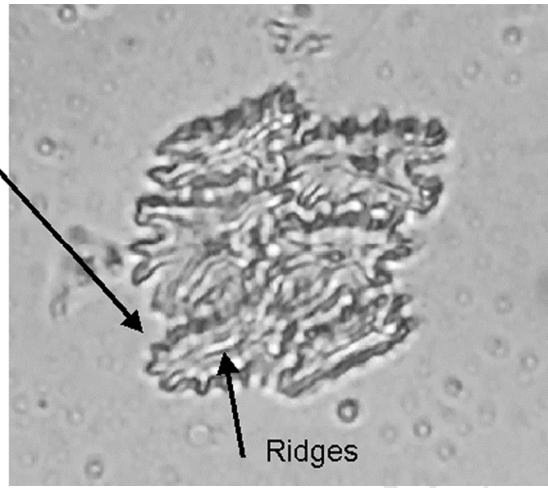
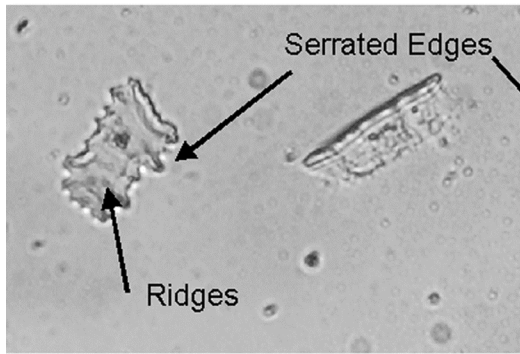
ACCEPTED



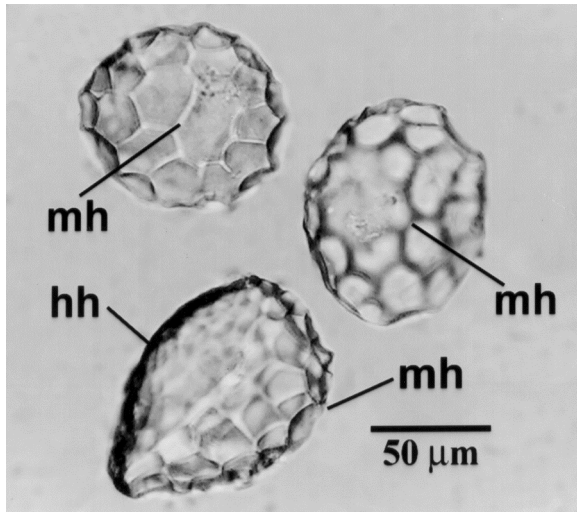
ACCEPTED MANUSCRIPT



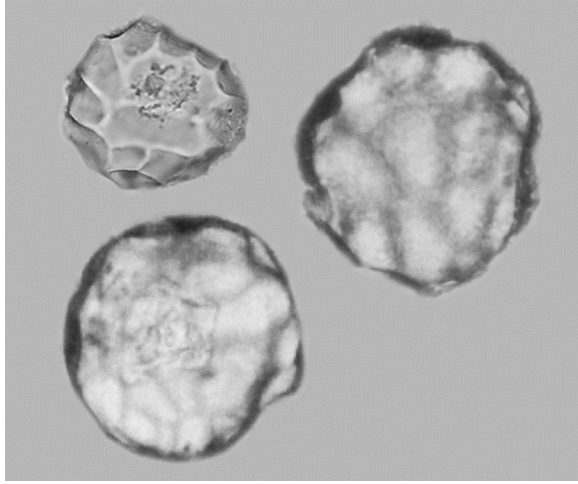
ACCEPTED MANUSCRIPT



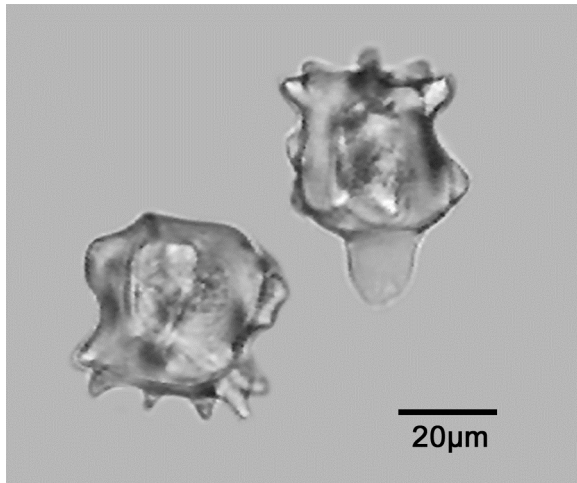
ACCEPTED MANUSCRIPT



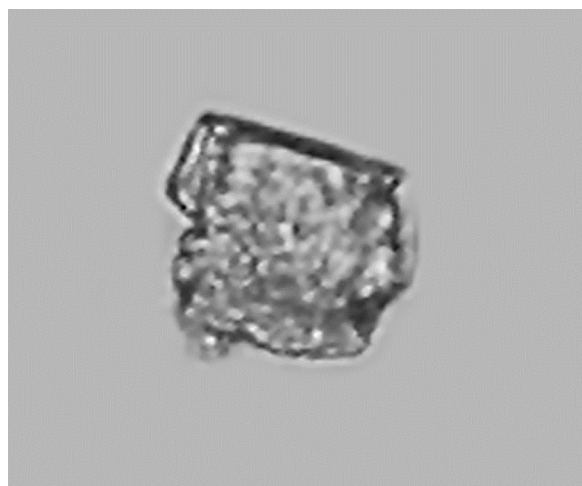
ACCEPTED MANUSCRIPT



ACCEPTED MANUSCRIPT

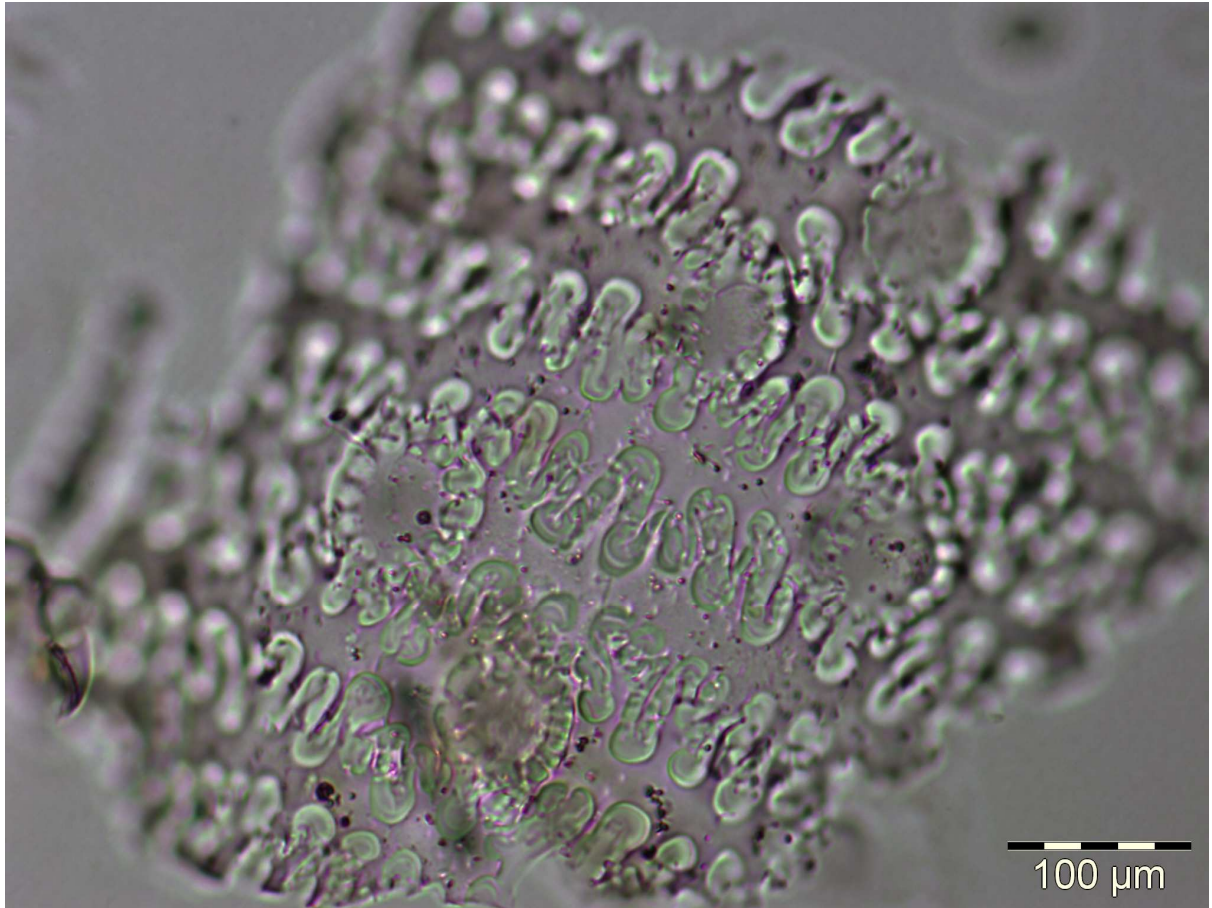


ACCEPTED MANUSCRIPT

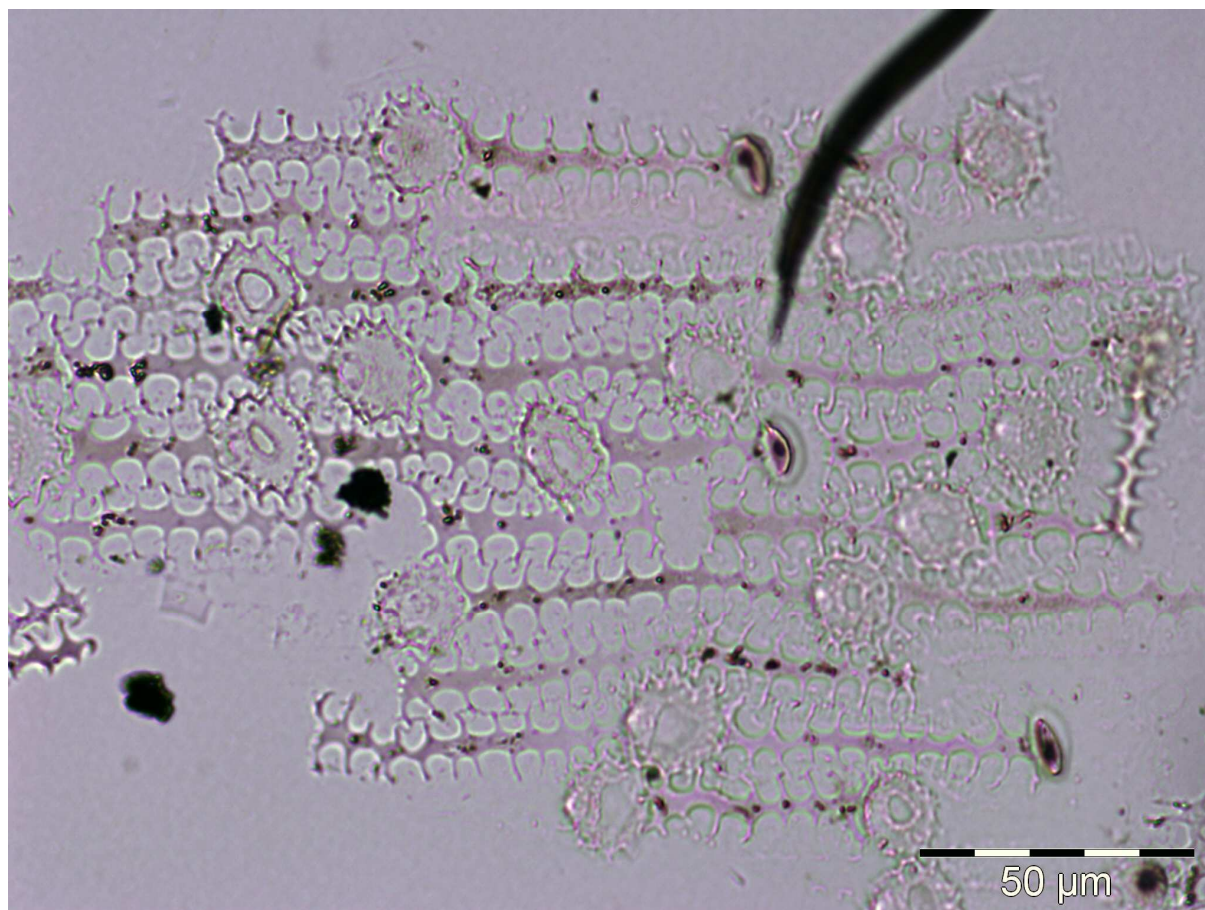


ACCEPTED MANUSCRIPT

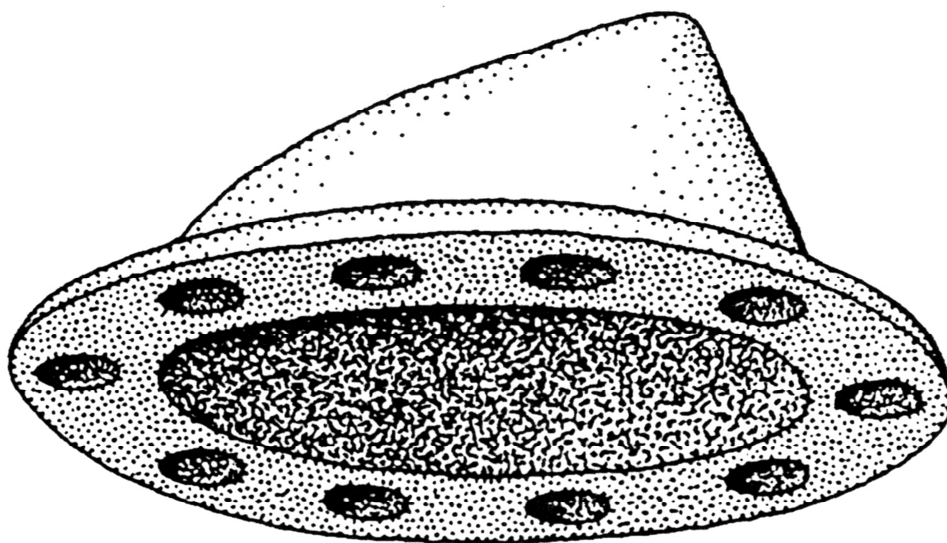




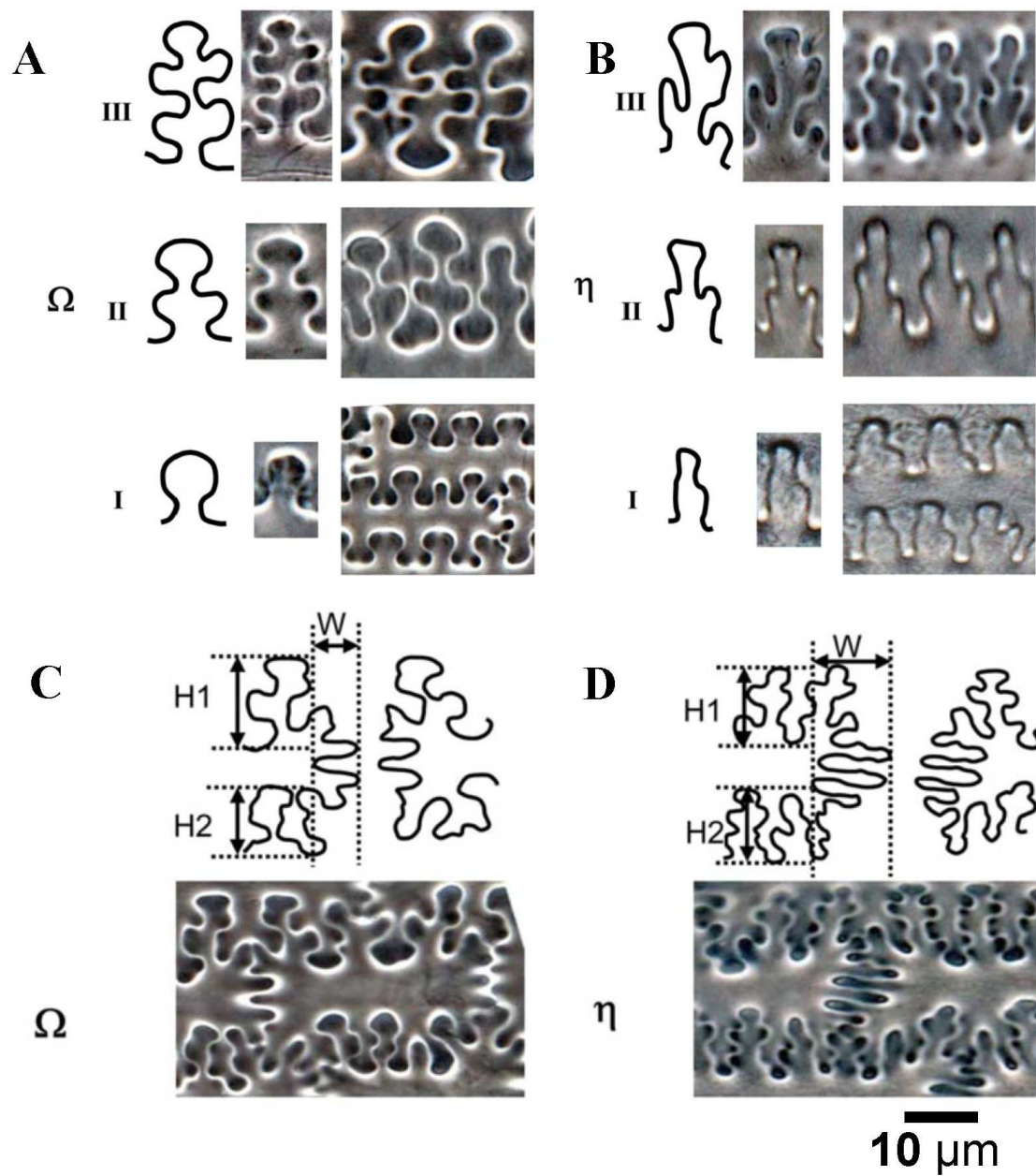
ACCEPTED MANUSCRIPT

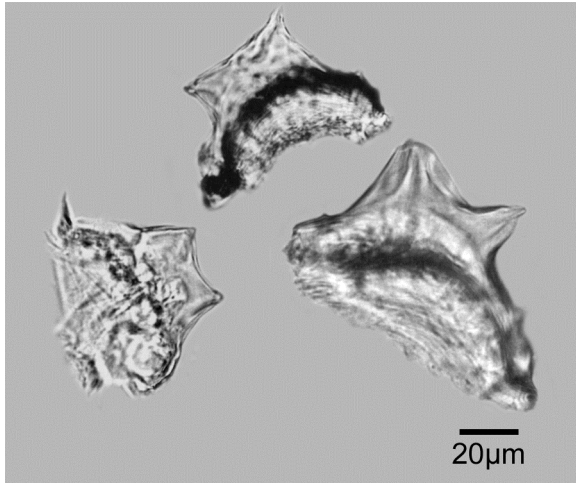


ACCEPTED MANUSCRIPT

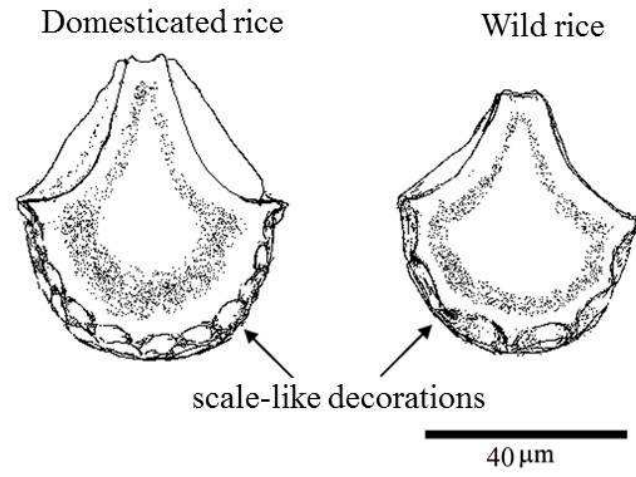


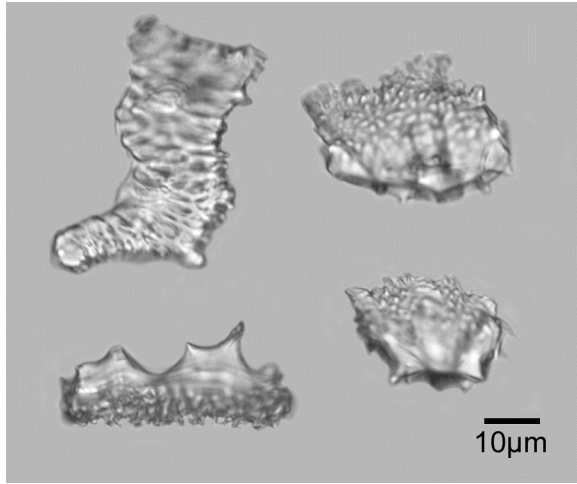
ACCEPTED MANUSCRIPT



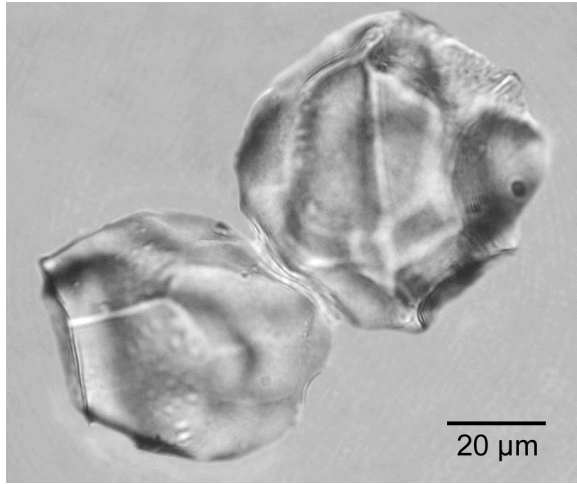


ACCEPTED MANUSCRIPT





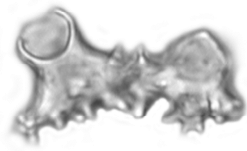
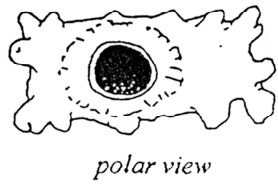
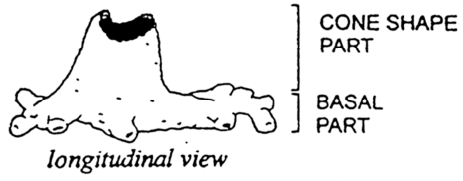
ACCEPTED MANUSCRIPT



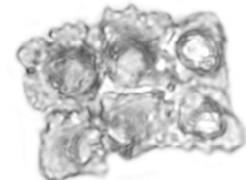
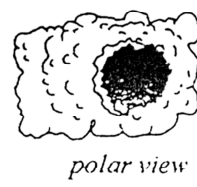
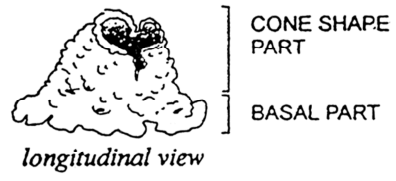
ACCEPTED MANUSCRIPT



MUSA



ENSETE



3.1.tif

ACCEPTED MANUSCRIPT

Experts from around the world who have carried the hands-on work reviewed the utility and importance of phytolith analysis in investigating agricultural origins and dispersals.

Phytoliths have been and will continue to be of significant, often unique, importance for this fundamental topic.

ACCEPTED MANUSCRIPT