

Update: Innovation in cardiology (V)

## Progress in Treatment by Percutaneous Coronary Intervention: The Stent of the Future

Takashi Muramatsu,<sup>a</sup> Yoshinobu Onuma,<sup>a</sup> Yao-Jun Zhang,<sup>a</sup> Christos V. Bourantas,<sup>a</sup> Alexander Kharlamov,<sup>a</sup> Roberto Diletti,<sup>a</sup> Vasim Farooq,<sup>a</sup> Bill D. Gogas,<sup>b</sup> Scot Garg,<sup>c</sup> Hector M. García-García,<sup>a</sup> Yukio Ozaki,<sup>d</sup> and Patrick W. Serruys<sup>a,\*</sup>

<sup>a</sup>Thoraxcenter, Erasmus Medical Center, Rotterdam, The Netherlands

<sup>b</sup>Department of Interventional Cardiology, Andreas Gruentzig Cardiovascular Center, Emory University School of Medicine, Atlanta, Georgia, United States

<sup>c</sup>Department of Cardiology, East Lancashire, NHS Trust, Lancashire, United Kingdom

<sup>d</sup>Department of Cardiology, Fujita Health University, Toyoake, Japan

Article history:

Available online 4 May 2013

Keywords:

Bioresorbable scaffold  
Coronary artery disease  
Drug-eluting stent  
Vascular reparative therapy

Palabras clave:

Estructura bioabsorbible  
Enfermedad coronaria  
Stent liberador de fármaco  
Tratamiento de reparación vascular

### ABSTRACT

First generation drug-eluting stents have considerably reduced in-stent restenosis and broadened the applications of percutaneous coronary interventions for the treatment of coronary artery disease. The polymer is an integral part of drug-eluting stents in that, it controls the release of an antiproliferative drug. The main safety concern of first generation drug-eluting stents with permanent polymers—stent thrombosis—has been caused by local hypersensitivity, delayed vessel healing, and endothelial dysfunction. This has prompted the development of newer generation drug-eluting stents with biodegradable polymers or even polymer-free drug-eluting stents. Recent clinical trials have shown the safety and efficacy of drug-eluting stents with biodegradable polymer, with proven reductions in very late stent thrombosis as compared to first generation drug-eluting stents. However, the concept of using a permanent metallic prosthesis implies major drawbacks, such as the presence of a foreign material within the native coronary artery that causes vascular inflammation and neoatherosclerosis, and also impedes the restoration of the vasomotor function of the stented segment. Bioresorbable scaffolds have been introduced to overcome these limitations, since they provide temporary scaffolding and then disappear, liberating the treated vessel from its cage. This update article presents the current status of these new technologies and highlights their future perspectives in interventional cardiology.

© 2012 Sociedad Española de Cardiología. Published by Elsevier España, S.L. All rights reserved.

### Avances en el tratamiento mediante intervención coronaria percutánea: el *stent* del futuro

### RESUMEN

Los *stents* liberadores de fármacos de primera generación han reducido considerablemente las reestenosis en el *stent* y han ampliado las aplicaciones de las intervenciones coronarias percutáneas en el tratamiento de la enfermedad coronaria. El polímero es parte integrante de los *stents* liberadores de fármacos, ya que controla la liberación de un fármaco antiproliferativo. La principal preocupación respecto a los *stents* liberadores de fármacos de primera generación con polímeros permanentes—la trombosis del *stent*—se ha debido a la hipersensibilidad local, la cicatrización tardía del vaso y la disfunción endotelial. Esto ha llevado al desarrollo de *stents* liberadores de fármacos de nueva generación con polímeros biodegradables o incluso sin polímero. En ensayos clínicos recientes se ha observado la seguridad y la eficacia de los *stents* liberadores de fármacos con polímero biodegradable, que han mostrado una reducción demostrada de la trombosis de *stent* muy tardía, comparados con los de primera generación. Sin embargo, el concepto de utilizar prótesis metálicas permanentes tiene importantes inconvenientes, como la presencia de un cuerpo extraño en el interior de la arteria coronaria nativa, que causa inflamación vascular y neoaterosclerosis e impide también el restablecimiento de la función vasomotora del segmento tratado con el *stent*. Para superar esas limitaciones, se han introducido las estructuras de base bioabsorbible, que proporcionan un armazón temporal y luego al desaparecer liberan el vaso tratado de la jaula que le imponían. En este artículo de puesta al día se presenta el estado actual de estas nuevas tecnologías y se resaltan sus perspectivas futuras en cardiología intervencionista.

© 2012 Sociedad Española de Cardiología. Publicado por Elsevier España, S.L. Todos los derechos reservados.

\* Corresponding author: Department of Interventional Cardiology, Thoraxcenter, Erasmus Medical Center, Ba583, Dr. Molewaterplein 40, 3015 GD, Rotterdam, The Netherlands.

E-mail address: p.w.j.c.serruys@erasmusmc.nl (P.W. Serruys).

## Abbreviations

BMS: bare metal stent  
 BRS: bioresorbable scaffold  
 DES: drug-eluting stent  
 LLL: late lumen loss  
 MACE: major adverse cardiac events  
 MI: myocardial infarction  
 SES: sirolimus-eluting stent  
 ST: stent thrombosis

## INTRODUCTION

Coronary stents were first developed in the mid 1980s to overcome the inherent limitations of balloon angioplasty, including elastic recoil and vessel closure in the acute phase, as well as constrictive remodeling and restenosis in the late phase.<sup>1–3</sup> In the 1990s, this technology became widely accepted as a promising treatment strategy for patients with coronary artery disease after the landmark Belgian Netherlands Stent trial, which demonstrated the superiority of the bare metal stent (BMS) over balloon angioplasty.<sup>4</sup> Although coronary stenting improved angiographic results and clinical outcomes, neointimal hyperplasia and restenosis continued to be major limitations of this technology.<sup>5</sup> In order to minimize neointimal hyperplasia and thereby reduce repeat revascularization, drug-eluting stents (DES) were developed. Early pivotal trials of the first generation DES showed excellent results with respect to the reduction of in-stent restenosis, such that they rapidly replaced BMS.<sup>6,7</sup> In the year 2006, safety concerns were raised with DES following reports linking their use to an increased risk of stent thrombosis (ST).<sup>8,9</sup> First generation DES, with permanent polymers, have been associated with delayed endothelialization, endothelial dysfunction, and local hypersensitivity reactions, resulting in an increased risk of ST and the need for prolongation of dual antiplatelet therapy.<sup>10,11</sup>

Newer generation DES, with thinner struts and more biocompatible polymers, have considerably improved their safety profile.<sup>12–15</sup> However, concerns still persist over the presence of durable polymers, as evidence from animal and human studies still suggest that these durable polymers may cause persistent arterial wall inflammation and delayed vascular healing, both of which may subsequently have a potential role in precipitating ST and delayed in-stent restenosis (ie, late catch-up phenomenon).<sup>16</sup> Newer generation DES, coated with biodegradable polymers, offer the attractive combination of controlled drug elution in parallel with biodegradation of the polymer into inert monomers. After the completion of biodegradation, only a “BMS” remains, thereby reducing the long-term risks associated with the presence of a permanent polymer.<sup>17</sup> An extension of this concept has brought the development of newer DES that are completely free of polymer, or come with novel coatings. In addition, bioresorbable metallic (ie, magnesium) and polymeric scaffolds have been developed, which initially safeguard the patency of the treated vessel and then disappear. The aim of this article is to review new stent technologies that are currently undergoing clinical investigation and discuss their future perspectives in interventional cardiology.

## NEW GENERATION METALLIC DRUG ELUTING STENT

### Drug Eluting Stent With Biodegradable Polymers

Biodegradable polymeric coatings facilitate drug delivery to the vessel wall and are then resorbed without any long-term sequelae.

Since their introduction in the year 2004,<sup>18</sup> many DES with biodegradable polymers have been developed, particularly after it was hypothesized that this technology would potentially reduce the risk of very late ST (VLST), an adverse event which has been associated with durable-polymer DES. The randomized ISAR-TEST 4 trial was conducted to test the noninferiority of a biodegradable-polymer rapamycin-eluting stent (RES; Yukon Choice PC, Transluminia; Hechingen, Germany) to a durable-polymer DES (ie, the first generation Cypher sirolimus-eluting stent [SES] or the second generation Xience V everolimus-eluting stent [EES]), with respect to clinical outcomes. A total of 2603 patients were enrolled in the trial. At 3-year follow-up, there were no significant differences in a composite of cardiac death, target-vessel myocardial infarction (MI), and target lesion revascularization (TLR) (RES 20.1% vs DES 20.9%,  $P=.59$ ), as well as the incidence of definite/probable ST (RES 1.4% vs DES 1.9%,  $P=.51$ ).<sup>19</sup> Longer-term clinical follow-up is required to evaluate the potential superiority of RES over the traditional DES in reducing the risk of VLST.

### Biolimus-eluting Stent With Biodegradable Polymer

Biolimus A9 is a semisynthetic limus-drug designed for stent application which has a similar potency to sirolimus, but is 10 times more lipophilic. It is immersed at a concentration of 15.6  $\mu\text{g}/\text{mm}$  into a polylactic acid biodegradable polymer that covers the abluminal stent surface. Polylactic acid is coreleased with biolimus and completely metabolized into carbon dioxide and water over 6 months to 9 months. The stainless steel stent platform has a strut thickness of 112  $\mu\text{m}$ , with a quadrature link design. Currently, the stent platforms utilizing this technology are the BioMatrix Flex (Biosensors Inc.; Singapore), NOBORI (Terumo Corp.; Tokyo, Japan), and Axxess (Biosensors Inc.).

In the LEADERS trial, the BioMatrix stent was shown to be noninferior to the first generation durable-polymer Cypher SES, with respect to a composite end point of cardiac death, MI, and ischemia-driven target vessel revascularization at 12-month follow-up (BioMatrix 10.6% vs Cypher 12.0%,  $P=.37$ ).<sup>20</sup> This noninferiority has recently been confirmed at 5-year follow-up.<sup>21</sup> Importantly, the BioMatrix stent showed a significantly lower incidence of definite VLST at 5-year follow-up (hazard ratio=0.26 [0.10–0.68]). A pooled data analysis of the randomized ISAR-TEST 3, ISAR-TEST 4, and LEADERS trials also showed that the DES with biodegradable polymers were associated with a lower risk of VLST as well as MI compared to the Cypher SES.<sup>22</sup> The LEADERS trial not only provided the first evidence of improved clinical outcomes compared to the first generation DES, but is also the proof of concept in terms of biodegradable-polymer DES.

### Everolimus-eluting Stent With Biodegradable Polymer: SYNERGY Stent

The SYNERGY stent (Boston Scientific; Natick, Massachusetts, United States) consists of a thin-strut (74  $\mu\text{m}$ ), platinum-chromium platform that delivers everolimus from a bioabsorbable polylactide-co-glycolide polymer applied to the abluminal surface. In the randomized, EVOLVE trial, the safety and efficacy of 2 dose formulations (standard dose [SD], 113  $\mu\text{g}/20$  mm, and half dose [HD], 56  $\mu\text{g}/20$  mm) of the SYNERGY stent were compared to the durable-polymer PROMUS Element EES (Boston Scientific).<sup>23</sup> A total of 291 patients were randomly assigned in a 1:1:1 ratio to SYNERGY, SYNERGY HD, and EES. The primary clinical endpoint was the 30-day rate of target lesion failure (TLF), defined as a composite of cardiac death, MI related to the target vessel, and TLR. TLF occurred in 3.1%, 1.1%, and 0% of patients in the SYNERGY, SYNERGY HD, and EES groups, respectively. The 6-month in-stent

**Table 1**  
Overview of Drug-eluting Stents With a Biodegradable Polymer Under Clinical Investigation or Already Available Outside the United States

Drug-eluting stent, manufacturer	Drug, dosage	Stent platform	Strut/coating thickness, $\mu\text{m}$	Polymer	Biodegradation of polymer, months	Drug release kinetics % (days)	Study, no. of patients	Angiographic follow-up, months	In-stent late loss, mm	Binary restenosis, %	Current status
BioMatrix Flex (Biosensors)	Biolimus A9 (15.6 $\mu\text{g}/\text{mm}$ )	SS	112/10	Abluminal PLA	6-9	45 (30)	LEADERS (857)	9	0.13	20.9	CE approved
NOBORI (Terumo)	Biolimus A9 (15.6 $\mu\text{g}/\text{mm}$ )	SS	112/10	Abluminal PLA	6-9	45 (30)	NOBORI 1 (153)	9	0.11	0.7	CE approved
Axxess (Biosensors)	Biolimus A9 (22 $\mu\text{g}/\text{mm}$ )	Nitinol	152/15	Abluminal PLA	6-9	45 (30)	DIVERGE (302)	9	MB, 0.29; SB 0.29	MB, 2.3; SB, 4.8	CE approved
Supralimus (Sahajanand Medical)	Sirolimus (125 $\mu\text{g}/19\text{ mm}$ )	SS	80/4-5	PLLA-PLGA - PCL-PVP	7	100 (48)	SERIES I (100)	6	0.09	0.0	CE approved
Infinium (Sahajanand Medical)	Paclitaxel (122 $\mu\text{g}/19\text{ mm}$ )	SS	80/4-5	PLLA-PLGA - PCL-PVP	7	50 (9-11)	SIMPLE II (111)	9	0.54	8.3	CE approved
BioMime (Meril Life Science)	Sirolimus (1.25 $\mu\text{g}/\text{mm}^2$ )	Co-Cr	65/2	PLLA+PLGA	N/A	100 (30)	MERIT II (242)	8	0.11	5.0	CE approved
Orsiro (Biotronik)	Sirolimus (1.4 $\mu\text{g}/\text{mm}^2$ )	Co-Cr	60/7	PLLA with silicon carbide layer	N/A	50 (30)	BIOFLOW I (30)	9	0.05	0.0	CE approved
DESyne BD (Elixir Medical)	Novolimus (65 $\mu\text{g}/14\text{ mm}$ )	Co-Cr	81/<3	Abluminal PLA	6-9	90 (90)	EXCELLA BD (115)	6	0.12	0.0	CE approved
SYNERGY (Boston Scientific)	Everolimus (SD, 113 $\mu\text{g}/20\text{ mm}$ ; HD, 56 $\mu\text{g}/20\text{ mm}$ )	Pt-Cr	71/3	Abluminal PLGA rollcoat	3	50 (60)	EVOLVE (SD 92; HD, 99)	6	SD, 0.10; HD, 0.13	SD, 2.3; HD, 1.1	CE approved
MiStent (Micell)	Sirolimus (N/A)	Co-Cr	64/3-5 (luminal), 10-15 (abluminal)	PLGA	3	50 (30)	DESSOLVE II (121)	9	0.27	4.9	CE approval submitted
Excel (JW Medical Systems)	Sirolimus (195-376 $\mu\text{g}/\text{stent}$ )	SS	119/15	PLLA	6-9	N/A	Registry (2077)	6	0.21	3.8	Ongoing evaluation
Firehawk (MicroPort Medical)	Sirolimus (3 $\mu\text{g}/\text{mm}$ )	Co-Cr	N/A	Abluminal PDLLA (groove-filled)	9	90 (90)	TARGET I (199)	9	0.13	1.0	Ongoing evaluation
NOYA (Medfavor Beijing Medical)	Sirolimus (8.8 $\mu\text{g}/\text{mm}$ )	Co-Cr	81/6	PDLLA	N/A	80 (30)	NOYA I (150)	9	0.11	4.2	Ongoing evaluation
Inspiron (Scitech)	Sirolimus (56 $\mu\text{g}/13\text{mm}$ )	Co-Cr	75/5	Abluminal PLLA+PLGA	6-9	80 (30)	INSPIRON I (38)	6	0.22	3.9	Ongoing evaluation
Tivoli (Essen Technology)	Sirolimus (8 $\mu\text{g}/\text{mm}$ )	Co-Cr	80/6	PLGA	3-6	80 (28)	I-Love-IT (168)	8	0.25	5.7	Ongoing evaluation
BuMA (SinoMed)	Sirolimus (1.4 $\mu\text{g}/\text{mm}^2$ )	SS	100	PLGA	N/A	100 (30)	PANDA-1 (113)	9	0.24	N/A	Ongoing evaluation
Svelte (Svelte)	Sirolimus (130 $\mu\text{g}/18\text{mm}$ )	Co-Cr	81/6	Amino acid-based carrier coating	12	N/A	DIRECT FIM (30)	6	0.15	N/A	Ongoing evaluation

CE, *Conformité Européenne*; Co-Cr, cobalt-chromium; HD, half dose; MB, main branch; N/A, not applicable; PCL, poly-L-lactide-co- $\epsilon$ -caprolactone; PDLLA, poly-D, L-lactic acid; PLA, polylactic acid; PLGA, poly-lactide-co-glycolide; PLLA, poly-L-lactic acid; Pt-Cr, platinum-chromium; PVP, poly-vinyl-pyrrolidone; SB, side branch; SD, standard dose; SS, stainless steel.

late lumen loss (LLL) was 0.10 mm for SYNERGY, 0.13 mm for SYNERGY HD, and 0.15 mm for EES ( $P_{\text{noninferiority}} < .001$ ). There were no ST events in any group at up to 6-month follow-up. Recently, the SYNERGY stent acquired the *Conformité Européenne* (CE) mark approval; a pivotal EVOLVE II trial aiming a head-to-head comparison of 12-month TLF with SYNERGY (842 patients) and EES (842 patients) is currently ongoing.

#### Other Drug Eluting Stents With Biodegradable Polymers

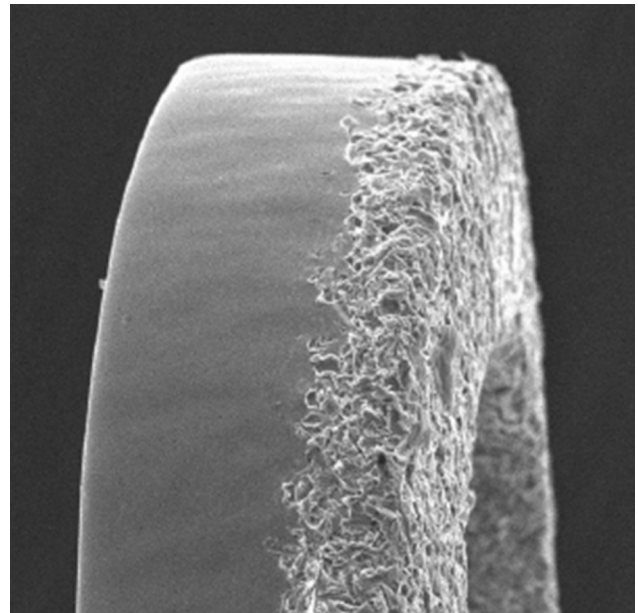
Currently, many DES with biodegradable polymers are commercially available or under clinical investigation (Table 1). Preliminary studies have shown comparable results at 6 months to 9 months to that of aforementioned DES with biodegradable polymers. Although biodegradable polymers appear to have become a promising drug-delivery technology in the newer generation DES platform, there are issues remaining to be addressed before their widespread clinical application.<sup>24</sup> Further research is needed in order to optimize the composition and release kinetics of these polymers.

#### Porous Polymer-free Drug Eluting Stent

The next major step forward may be metallic stent structures which allow for appropriate drug-elution kinetics without the use of polymers. Several devices have been designed to test this approach by incorporating drugs into a microporous or nanoporous surface of the stent (Table 2). The efficacy of a polymer-free SES (SES-PF; Yukon Choice, Translumina) was investigated in the ISAR-TEST 3 trial.<sup>25,26</sup> The SES-PF (201 patients) was compared to a SES with a biodegradable polymer (202 patients, SES-BP; Yukon Coice PC, Translumina) and a SES with a permanent polymer (202 patients, SES-PP; Cypher, Cordis; Miami Lakes, Florida, United States). At 2 years, there were no significant differences in death, MI (SES-PF 6.5%, SES-BP 5.9%, and SES-PP 6.4%), TLR (SES-PF 13.4%, SES-BP 8.4%, and SES-PP 10.4%), and definite/probable ST (SES-PF 1.0%, SES-BP 0.5%, and SES-PP 1.0%). Patients undergoing paired angiography at 6 months to 8 months and at 2 years (302 patients), demonstrated a lower delayed LLL in the SES-PF (−0.01 mm) group, as compared to both the SES-BP (0.17 mm) and the SES-PP (0.16 mm) ( $P < .001$ ) groups. The absence of delayed LLL in the SES-PF group may indicate a lower propensity for stent-vessel wall interactions, owing to less inflammatory or hypersensitive reactions. Recently, the 5-year clinical outcomes in the ISAR-TEST trial have been reported.<sup>27</sup> There were no statistically significant differences in ST events between SES-PF and the first generation TAXUS paclitaxel-eluting stent (PES) (SES-PF 0.5% vs PES 1.6%,  $P = .32$ ). Extended follow-up data may further support the durability, safety, and efficacy of the SES-PF.

#### BioFreedom Stent

The BioFreedom stent (Biosensors Inc.) is a 316L stainless steel, polymer-free stent that is coated with biolimus A9 (Fig. 1). Preclinical studies have reported lower injury scores; lower numbers of struts with fibrin, granulomas, and giant cells; significantly lower percentage of diameter stenosis; and greater endothelialization with the BioFreedom stent at 180-day follow-up as compared to the Cypher SES.<sup>28</sup> The first-in-man (FIM) trial enrolled 182 patients who were randomized to receive either BioFreedom with SD sirolimus (15.6  $\mu\text{g}/\text{mm}$ ), BioFreedom with low dose (LD) sirolimus (7.8  $\mu\text{g}/\text{mm}$ ), or TAXUS Liberté PES. At 12 months, the in-stent LLL was 0.17 mm in the BioFreedom SD



**Figure 1.** The surface of the polymer-free BioFreedom stent. A scanning electron microscopy image shows the micropores impregnated with biolimus A9 only in the abuminal side of the strut.

arm ( $P < .0001$  vs PES), 0.22 mm in the BioFreedom LD arm ( $P = .21$  vs PES), and 0.35 mm in the PES arm. There were no ST events and no differences in major adverse cardiac events (MACE) including all-cause death, MI, and emergent bypass surgery or TLR at up to 36 months (BioFreedom SD 11.9%; BioFreedom LD 18.1%, and PES 10.0%).<sup>29</sup> Currently, a randomized LEADERS FREE trial has been planned to examine the noninferiority (a composite of cardiac death, MI, and ST) and superiority (clinically driven TLR) of the BioFreedom stent to BMS in >2400 elderly patients with dual antiplatelet therapy for 1 month after stent implantation.

#### VESTAsync Stent

The VESTAsync stent (MIV Therapeutics; Atlanta, Georgia, United States) combines a stainless steel platform with a nanoporous, hydroxyapatite (biocompatible crystalline derivative of calcium phosphate) surface coating that is impregnated with 55  $\mu\text{g}$  of sirolimus mixture (Fig. 2). It is expected that sirolimus will be completely released within the first 3 months after the implantation, and that the hydroxyapatite will be stable over 4 months. The safety and efficacy of the VESTAsync stent was evaluated in the VESTAsync I FIM trial. A total of 15 patients with single de novo coronary artery lesions were enrolled. In-stent LLL was 0.36 mm at 9 months, with no MACE reported at up to 1-year follow-up.<sup>30</sup> Recently a randomized VESTAsync II trial has been reported.<sup>31</sup> The patients treated with the VESTAsync stent (50 patients) showed a significantly lower in-stent LLL compared to those treated with BMS (25 patients) at 8 months (VESTAsync 0.39 mm vs BMS 0.74 mm,  $P = .03$ ). No evidence of ST was reported at up to 2-year follow-up.

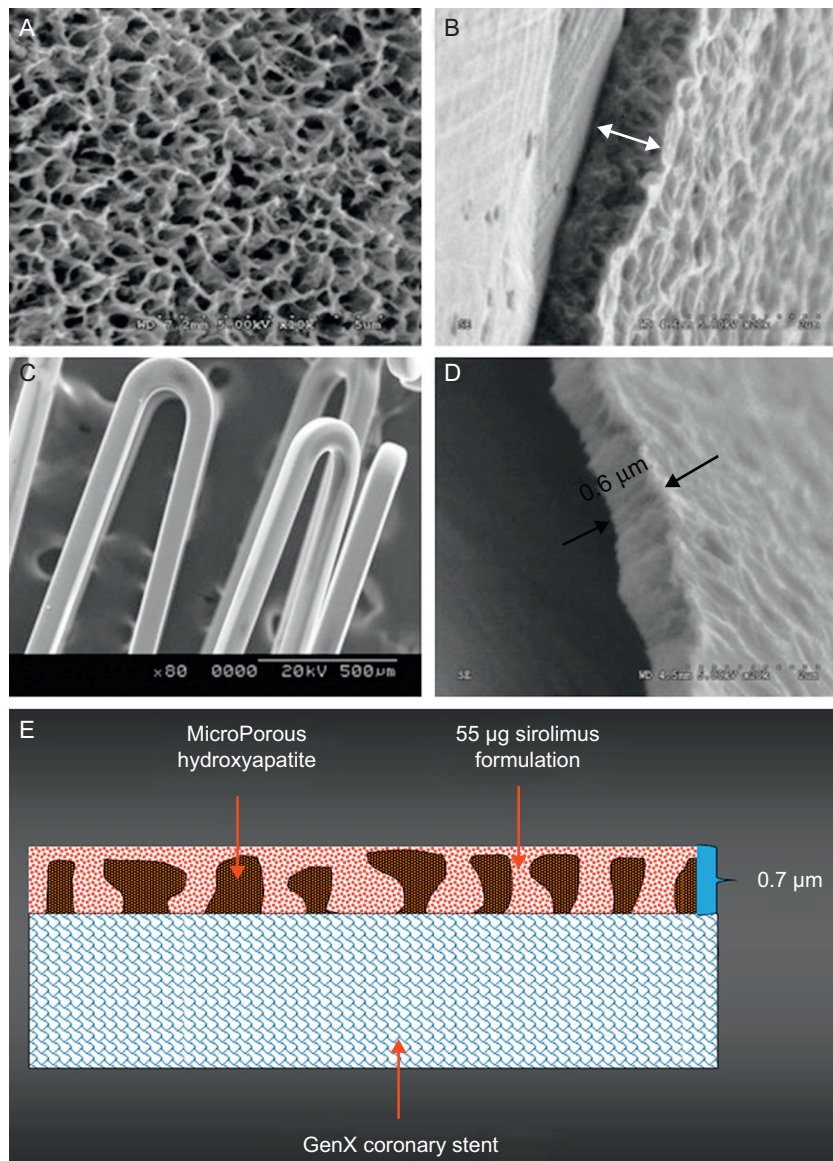
#### Nano<sup>+</sup> Stent

The Nano<sup>+</sup> stent (Lepu Medical; Beijing, China) is a stainless steel, polymer-free stent with a nanoporous surface coated with

**Table 2**  
Overview of Polymer-free and Novel-coating Drug-eluting Stents Under Clinical Investigation or Already Available Outside the United States

Drug-eluting stent, manufacturer	Drug, dosage	Stent platform	Strut thickness, $\mu\text{m}$	Surface modification	Drug release kinetics	Study, no. of patients	Angiographic follow-up, months	In-stent late loss, mm	Binary restenosis, %	Current status
<i>Porous polymer-free DES</i>										
Yukon Choice (Translumina)	Sirolimus (11.7–21.9 $\mu\text{g}$ )	SS	87	Abluminal microporous surface	100%, 25 days	ISAR-TEST 1 (225)	9	0.48	14.2	CE approved
BioFreedom (Biosensors)	Biolimus A9 (SD, 15.6 $\mu\text{g}/\text{mm}$ ; HD, 7.8 $\mu\text{g}/\text{mm}$ )	SS	119	Abluminal microporous surface	90%, 50 h	FIM (SD, 31; HD, 35)	12	SD, 0.17; HD, 0.22	N/A	CE approval submitted
VESTAsync (MIV Therapeutics)	Sirolimus (55 $\mu\text{g}$ )	SS	65	Nanoporous surface with hydroxyapatite	100%, 90 days	VESTAsync II (15)	8	0.39	0	Ongoing evaluation
Nano* (Lepu Medical)	Sirolimus (2.2 $\mu\text{g}/\text{mm}^2$ )	SS	100	Abluminal nanoporous surface	80%, 30 days	N/A	N/A	N/A	N/A	Ongoing evaluation
<i>DES with other technologies</i>										
Cre8 (CID)	Sirolimus (0.9 $\mu\text{g}/\text{mm}^2$ )	Co-Cr	80	Abluminal reservoirs	100%, 90 days	NEXT-Cre8 (162)	6	0.14	3.2	CE approved
Combo (OrbusNeich Medical)	EPC+sirolimus (5 $\mu\text{g}/\text{mm}$ )	SS	100/3-5	Abluminal biodegradable polymer and luminal CD34 antibody layer	N/A	REMEDEE (124)	9	0.39	8.3	Ongoing evaluation
FOCUS <i>np</i> (Envision Scientific)	Sirolimus (108 $\mu\text{g}/16\text{mm}$ )	Co-Cr	73	Abluminal coating with encapsulated drug by nanoparticles	100%, 28 days	N/A	N/A	N/A	N/A	Ongoing evaluation

CE, *Conformité Européenne*; Co-Cr, cobalt-chromium; SD, standard dose; DES, drug-eluting stent; EPC, endothelial progenitor cell (capture technology); HD, half dose; N/A, not applicable; SS, stainless steel.



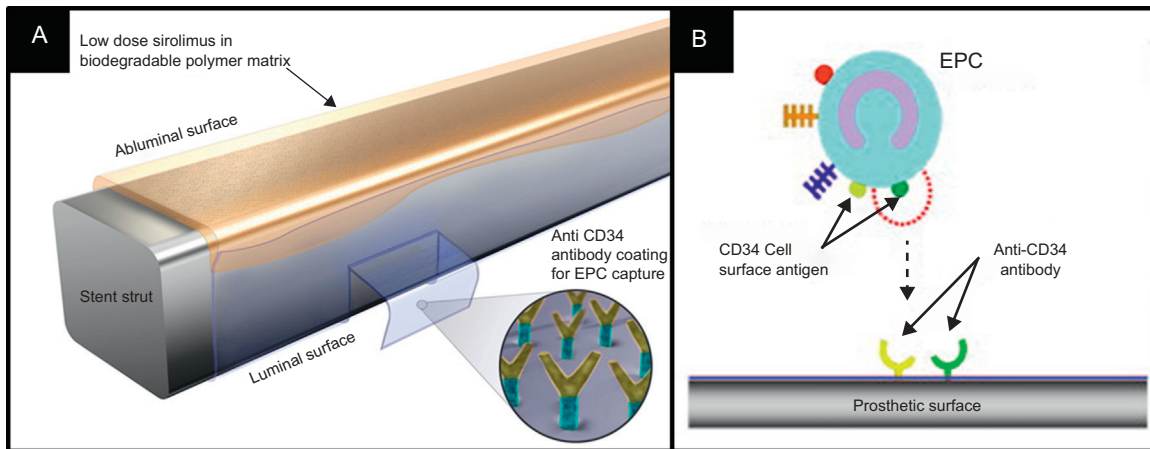
**Figure 2.** The polymer-free VESTAync sirolimus-eluting stent system. The scanning electron microscopy images of microporous hydroxyapatite coating (A), cross section of the hydroxyapatite coating (B), final coating including the hydroxyapatite filled with sirolimus formulation (C), and cross section of the final coating (D). A schematic representation of the surface coating (E).

sirolimus ( $2.2 \mu\text{g}/\text{mm}^2$ ). The average diameter of the pores is approximately  $400 \text{ nm}$  and almost  $80\%$  of the drug is programmed to be released within 30 days. The Bicore stent is another nanopore-based polymer-free DES, which uses both sirolimus and probucol. These 2 stents have a similar design, the only difference between the Bicore stent and the Nano<sup>+</sup> stent being the drug type. Thirty patients with de novo lesions were enrolled in the Bicore FIM trial.<sup>32</sup> In-stent LLL was  $0.14 \text{ mm}$  and the rate of tissue coverage of the struts was  $98.3\%$  determined by optical coherence tomography (OCT) at 4 months.<sup>32</sup> Similarly, the ISAR-TEST 5 trial demonstrated the noninferiority of polymer-free sirolimus and probucol-eluting stents (Yukon Choice, Translumina) over the second generation durable-polymer resolute zotarolimus-eluting stents (Medtronic Cardiovascular; Santa Clara, California, United States) in terms of MACE and ST at 1-year follow-up.<sup>33</sup> A post-market study of the Nano<sup>+</sup> stent is currently ongoing in China, and another trial aiming the CE mark approval has been planned in Europe.

## Drug Eluting Stent With Other Technologies

### Cre8 Stent

The Cre8 stent (CID; Saluggia, Italy) is a polymer-free stent that is integrally coated with an ultra-thin ( $0.3 \mu\text{m}$ ) passive carbon coating (i-Carbofilm, CID). The amphiphilic formulation, constituted by sirolimus ( $0.9 \mu\text{g}/\text{mm}^2$ ) with an excipient composed of a long-chain fatty acid mixture to modulate the drug release, is loaded into abluminal reservoirs. Complete release of sirolimus is expected within the first 3 months after stent deployment. A total of 323 patients were randomized to receive either Cre8 (162 patients) or TAXUS Liberté PES (161 patients) in the NEXT FIM trial.<sup>34</sup> The primary endpoint was in-stent LLL at 6 months, and was significantly lower in the Cre8 group (Cre8  $0.14 \text{ mm}$  vs PES  $0.34 \text{ mm}$ ,  $P < .0001$ ). A cumulative incidence of MACE including cardiac death, MI, and TLR in the Cre8 group was  $6.7\%$  at 2 years,



**Figure 3.** The Combo dual therapy stent system. A: The Combo stent consists of an abluminal biodegradable polymer matrix with a sirolimus and a luminal CD-34 antibody layer. B: A schematic representation of the endothelial progenitor cells capture technology. The CD-34 antigens on the surface of the endothelial progenitor cells attach to the anti-CD-34 antibodies on the stent's surface, promoting endothelialization. EPC, endothelial progenitor cells.

showing no differences compared to PES (7.1%). Only 1 case of definite late ST was observed in each group at up to 2-year follow-up.<sup>35</sup> An all-comers registry (1000 patients) is currently ongoing and is expected to complete enrollment of patients by early 2013.

#### Combo Stent

The Combo stent (OrbusNeich Medical; Hong Kong, China) applies the endothelial progenitor cell capture technology to enhance vessel healing (ie, immobile CD34 antibodies on the luminal surface of the strut), incorporating abluminal LD sirolimus and a biodegradable polymer into the current DES technology (Fig. 3). Data from OCT and histology at 28 days in a porcine model indicated that this hybrid stent promotes endothelialization, and reduces neointimal formation and inflammation when compared to the Cypher SES and the first generation Genous endothelial progenitor cell stent.<sup>36</sup> The REMEDIE FIM trial randomized 180 patients to treatment with either the Combo stent (124 patients) or the TAXUS Liberté PES (59 patients). The in-stent LLL at 9 months was 0.39 mm in the Combo group and 0.44 mm in the PES group ( $P_{\text{noninferiority}}=.0012$ ). Binary restenosis was observed in 8.3% patients in the Combo group and in 13.5% patients in the PES group ( $P=.30$ ). No cases of ST were reported in both groups at up to 9-months follow-up.<sup>37</sup> Further investigation is required to determine the prohealing effect and clinical efficacy of this device.

#### FOCUS np Stent

The FOCUS np stent (Envision; Surat, India) platform has a novel carrier; a phospholipid 2-layer nanoparticle that encapsulates sirolimus (Fig. 4). The encapsulated sirolimus is coated on the surface of the stent and the balloon (108  $\mu\text{g}$  of sirolimus on a 3.0 $\times$ 16.0 mm system). Sirolimus is programmed to be completely released within 28 days, however, the tissue concentration of sirolimus peaks within the first 24 h. A preclinical study with the FOCUS np stent showed similar LLL and inflammation scores to that seen in the Cypher SES at 28 days and at 90 days. A FIM trial will be completed in early 2013.<sup>38</sup>

### BIORESORBABLE SCAFFOLDS

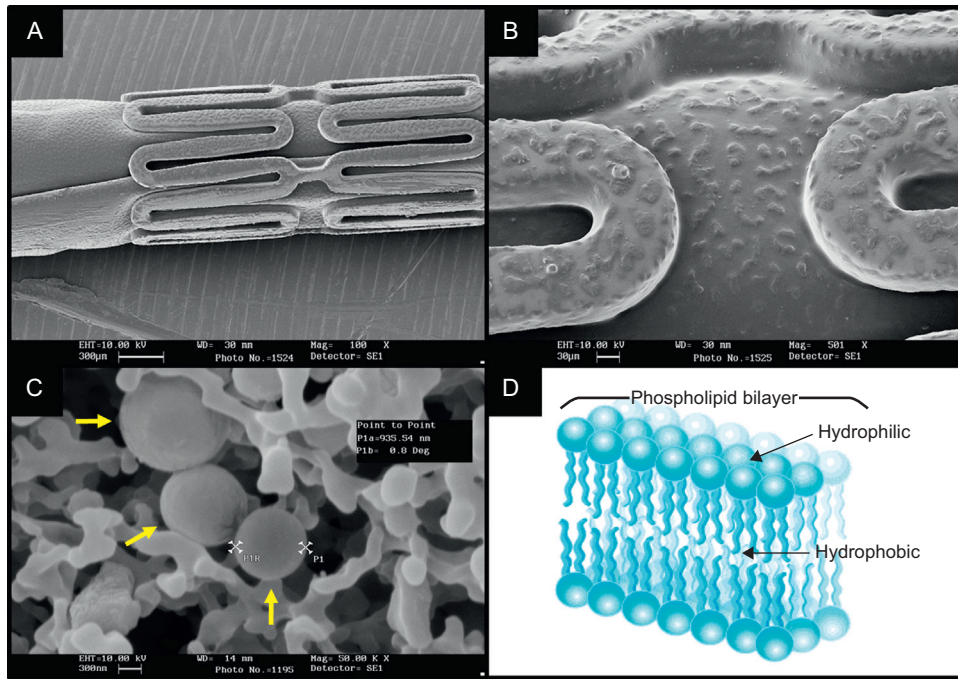
Fully bioresorbable scaffolds (BRS) are a novel approach as they provide transient vessel support in contrast to the

permanent caging caused by metallic stents. The concept of BRS was introduced by Stack et al. in the year 1988.<sup>39</sup> Zidar and colleagues first implanted BRS made of poly-L-lactic acid (PLLA) into canine femoral arteries.<sup>40</sup> Despite significant scaffold degradation with low-grade vascular inflammation at 9-month follow-up, this technology failed to develop because of the inability to manufacture an ideal polymer that could limit inflammation and restenosis.<sup>41,42</sup> In the year 2000, Tamai and colleagues reported their FIM experience with BRS implantation for the treatment of human coronary arteries.<sup>43</sup> This "Igaki-Tamai" PLLA stent had a unique zigzag helical coil design, with a strut thickness of 170  $\mu\text{m}$ . This system was self-expanding but also required balloon inflation with heated contrast for expansion. The FIM study of the Igaki-Tamai stent (15 patients) demonstrated no MACE or ST events within 30 days, and 1 repeat percutaneous coronary intervention at 6-month follow-up. Our group reported the findings of OCT at 10 years after Igaki-Tamai stent implantation, showing absence of visible struts, with endoluminal lining of the vessel wall.<sup>44</sup> Recently, Nishio et al. reported >10-year clinical outcomes of the first 50 patients treated with Igaki-Tamai stents. Autopsy specimens showed interesting histological findings, that indicated healing with thickened neointima at the previously stented segment, without inflammatory cell infiltration or foreign body reactions. As measured by quantitative coronary angiography, LLL decreased from 0.91 mm at 6 months to 0.59 mm at 3 years, whilst intravascular ultrasound (IVUS) showed an increased external elastic lamina area (15.0 mm<sup>2</sup> postprocedurally and 16.9 mm<sup>2</sup> at 3 years). These findings suggest that the artery restored its capability to respond to expansive remodeling and late lumen enlargement once the scaffold degraded.

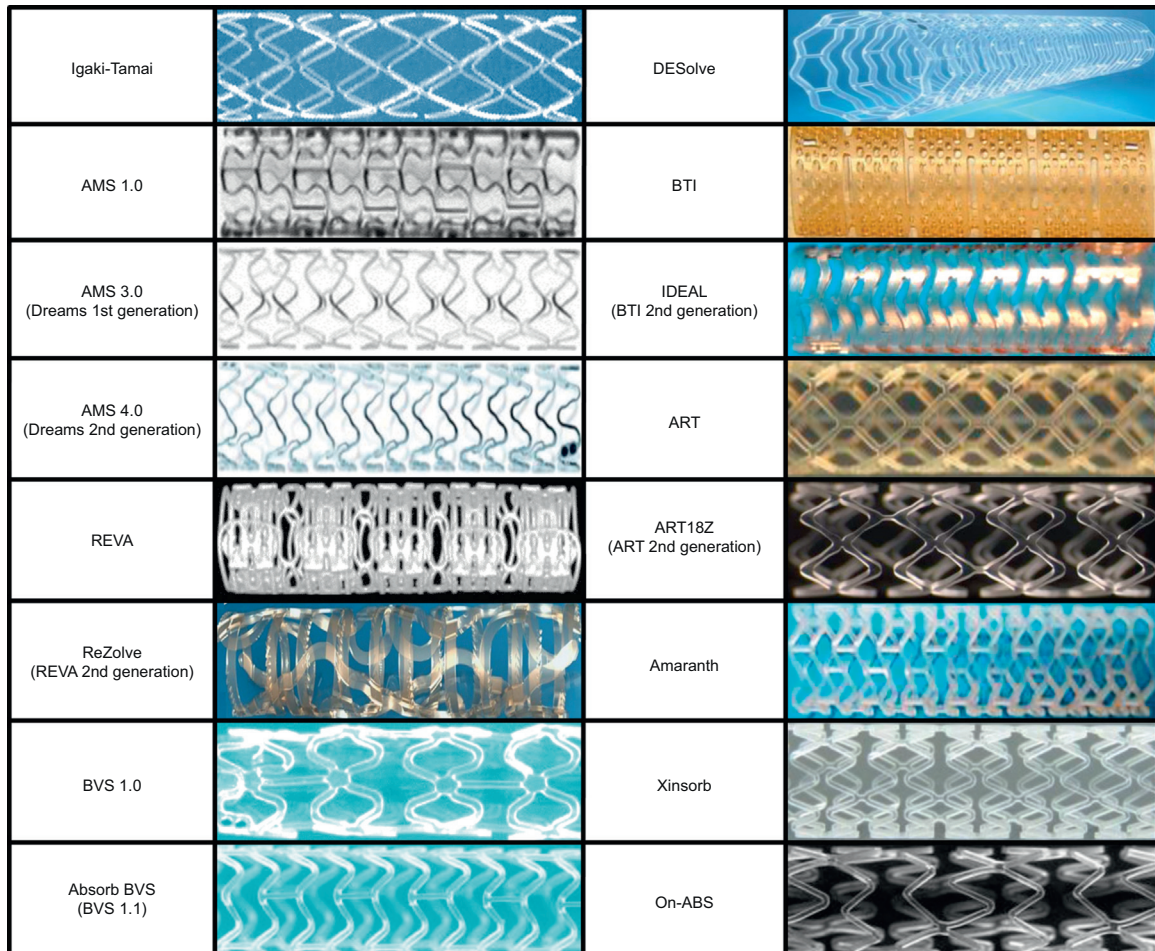
Currently, numerous BRS are being tested in clinical or preclinical studies. An overview of this technology has been shown in Table 3 and Figure 5.

#### Absorbable Magnesium Stent

Magnesium (Mg) is the fourth commonest cation within the human body. It is essential for the synthesis of over 300 enzymes, and is a cofactor for ATPase. A high dose infusion of Mg can cause vasodilation and the development of collaterals during ischaemia. The degradation of Mg produces an electronegative charge that results in the stent being hypothermogenic.<sup>45</sup>



**Figure 4.** The nanocarrier-based FOCUS *np* sirolimus-eluting stent. The scanning electron microscopy (SEM) images of the crimped stent (A) and the magnified surface of the strut and balloon (B) coated with encapsulated sirolimus (C, yellow arrows). The nanocarrier consists of a lipid bilayer with a hydrophilic head and two lipophilic/hydrophobic tails (D), and the drug is released on pH change.



**Figure 5.** Bioresorbable scaffolds under clinical or preclinical investigation.



**Table 3**  
Overview of Bioresorbable Scaffolds Under Current Pre-clinical or Clinical Investigation

Bioresorbable scaffold, manufacturer	Strut material	Coating material	Drug	Radio-opacity	Strut thickness, $\mu\text{m}$	Crossing profile, mm	Stent-to-artery coverage, %	Duration of radial support	Resorption time, months	Angiographic late loss, mm (months)	Target lesion revascularization rate, % (months)	Current status
Igaki-Tamai (Kyoto Medical)	PLLA	None	None	Gold markers	170	N/A	24	6 months	24	0.48 (6)	6.7 (6)	CE approved (PAD)
AMS-1.0 (Biotronik)	Mg	None	None	None	165	1.2	10	Days or weeks	<4	1.08 (4)	45 (12)	FIM completed
AMS-3.0 (Biotronik)	Mg	None	Paclitaxel	None	125	N/A (6 Fr compatible)	N/A	Weeks	>4	0.64 (6) 0.52 (12)	4.3 (6) 4.7 (12)	FIM (BIOSOLVE-I) completed
AMS-4.0 (Biotronik)	Mg	PLLA	Sirolimus	Metallic markers	N/A	N/A (6 Fr compatible)	N/A	N/A	N/A	N/A	N/A	Used in BIOSOLVE-I
BVS 1.0 (Abbott Vascular)	PLLA	PDLLA	Everolimus	Platinum markers	157	1.4	26	Weeks	24	0.44 (6)	0.0 (60)	FIM completed
Absorb BVS 1.1 (Abbott Vascular)	PLLA	PDLLA	Everolimus	Platinum markers	157	1.4	26	6 months	24	0.19 (6) 0.27 (12)	3.6 (12)	CE approved
REVA (REVA Medical)	Poly-tyrosine-derived polycarbonate polymer	None	None	Scaffold itself	200	1.7	55	3-6 months	24	1.81 (6)	67 (12)	FIM completed
ReZolve (REVA Medical)	Poly-tyrosine-derived polycarbonate polymer	None	Sirolimus	Scaffold itself	114-228	1.5	N/A	4-6 months	24	N/A	N/A	FIM planned in 2013
DESolve (Elixir Medical)	PLLA	PLLA	Mvolimus	Metallic markers	150	1.5	N/A	N/A	12-24	0.19 (8)	6.7 (12)	FIM completed
IDEAL BioStent (Xenogenics)	polymer salicylate+ linker	Salicylate	Sirolimus	None	175	1.5-1.7	57	3 months	>12	N/A	N/A	FIM completed
ART18Z (Arterial Remodeling Technologies)	PDLLA	None	None	None	170	N/A (6 Fr compatible)	<25	3-6 months	18	None	None	FIM initiated
Xinsorb (Huaan Biotechnology)	PLLA+PCL+PLGA	None	Sirolimus	Metallic markers	160	N/A	N/A	N/A	N/A	None	None	Pre-clinical underway
Amaranth PLLA (Amaranth Medical)	PLLA	None	None	None	150-200	N/A (6 Fr compatible)	N/A	3-6 months	N/A	None	None	FIM initiated
On-ABS (OrbusNeich Medical)	PLLA+PCL+PDLLA	None	EPC+ sirolimus	None	150	N/A	N/A	N/A	N/A	None	None	Pre-clinical underway

CE, *Conformité Européenne*; EPC, endothelial progenitor cell (capture technology); FIM, first-in-man; Mg, magnesium; N/A, not applicable; PAD, peripheral artery disease; PCL, poly-L-lactide-co- $\epsilon$ -caprolactone; PDLLA, poly-D, L-lactic acid; PLGA, poly-lactide-co-glycolide; PLLA, poly-L-lactic acid.

The first generation absorbable metallic stent (AMS-1, Biotronik; Berlin, Germany) was composed of 93% Mg and 7% rare earth metals. In the porcine model, the AMS-1 was shown to be rapidly endothelialized, and largely degraded into inorganic salts at 60 days, with little associated inflammatory response.<sup>46</sup> The PROGRESS AMS trial was a single-arm FIM study, which assessed the efficacy and safety of this stent in 63 patients with single de novo lesions.<sup>47</sup> No evidence of death, MI, or ST was reported at up to 12-month follow-up. Disappointingly, the TLR rate was 23.8% at 4 months and 45% at 12 months. The in-stent LLL was 1.08 mm and the vasodilator function, after the nitroglycerin administration, appeared to be restored in the stented segment at 4-month angiographic follow-up.<sup>48</sup> IVUS data suggested that the increased LLL was attributed to an increased neointimal formation and insufficient radial strength of the Mg alloy, due to rapid stent degradation resulting in vessel recoil. Consequently, new stents have been developed, namely AMS-2 and AMS-3. The AMS-2 stent was designed to address excessive vessel recoil seen with AMS-1. It provided prolonged mechanical integrity by using a different Mg alloy, which not only had a higher collapse pressure, but also a slower degradation time. In addition, the strut thickness was reduced from 165  $\mu\text{m}$  to 125  $\mu\text{m}$ , and the cross-sectional shape of the strut altered from rectangular to square. These modifications facilitated prolonged mechanical integrity, improved radial strength, and resulted in reduced neointimal proliferation in animal studies. The AMS-3 stent (ie, drug-eluting AMS [DREAMS]) was designed to incorporate a bioresorbable matrix for the controlled release of paclitaxel with the AMS-2 platform. This device was evaluated in the BIOSOLVE-I trial (46 patients), and demonstrated an in-stent LLL of 0.64 mm at 6 months and 0.52 mm at 12 months. The rate of TLF was 7.0% at up to 12-month follow-up, due to 2 clinically driven TLRs and 1 periprocedural MI.<sup>49</sup> The second generation DREAMS has a modified stent platform and sirolimus as its antiproliferative drug. The BIOSOLVE-II study aimed to assess the safety and efficacy of this device will be initiated in the year 2013.

#### Everolimus-eluting Poly-L-lactic Acid Scaffold: Absorb BVS

The backbone of Absorb BVS (Abbott Vascular; Santa Clara, California, United States) is made of PLLA. The coating consists of poly-D, L-lactide (PDLLA), which is a random copolymer of D-lactic acid and L-lactic acid with lower crystallinity than the backbone PLLA. The PDLLA coating controls the release of the antiproliferative drug everolimus. The first generation Absorb BVS (1.0) was tested in 30 patients who were enrolled in the ABSORB FIM (cohort A) trial. Multiple modality imaging was assessed in this trial, and the results can be summarized as follows: *a)* partial bioresorption of the polymeric struts; *b)* late lumen enlargement between 6 months and 2 years; *c)* restoration of vasomotion and endothelial function at 2 years; *d)* sustained scaffolding of plaque deformability documented with palpography, and *e)* feasibility of noninvasive imaging with multislice computed tomography.<sup>50,51</sup> Five-year clinical follow-up is available in 29 patients.<sup>52</sup> Only 1 patient experienced a non-Q wave MI related to the treatment of a non-flow-limiting stenosis at 46 days after Absorb BVS implantation. There were no ST events in the entire period and no MACE between 6 months and 5 years, resulting in an overall MACE rate of 3.4% at 5 years. Late scaffold shrinkage was the primary reason for an increased in-stent LLL (0.44 mm) at 6 months. Lumen area was reduced by 16.6%, whilst the late recoil was 11.7%.<sup>53</sup> In order to enhance the radial strength of the struts and to reduce late recoil, the strut design and the manufacturing process of the polymer were modified in the second generation Absorb BVS (1.1). Firstly, the new design had in-phase zigzag hoops linked by bridges that allowed for a more uniform strut distribution. This new scaffold

design reduced maximum circular unsupported surface area that provided for more uniform vessel wall support and drug delivery. Secondly, a modified manufacturing process resulted in a slower hydrolysis (in vivo degradation) rate of the polymer, thus allowing for prolongation of its mechanical integrity.<sup>54</sup>

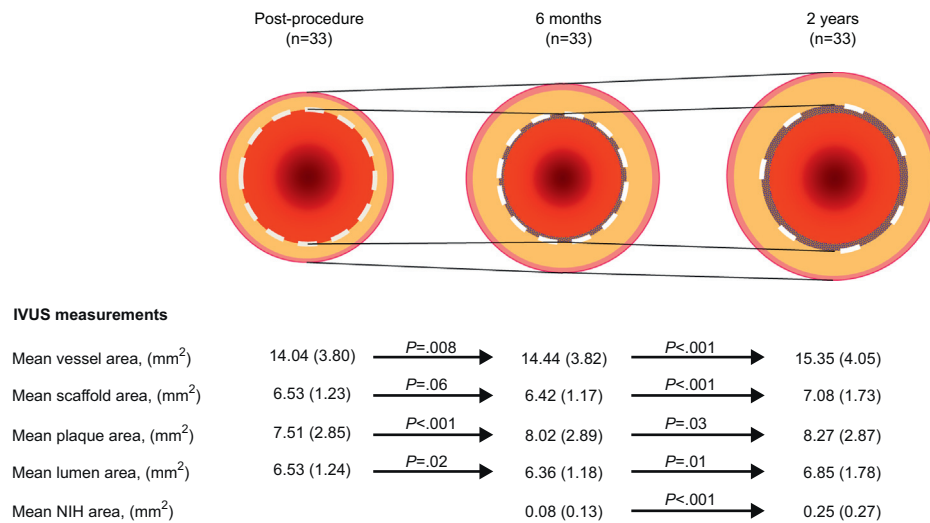
The Absorb BVS 1.1 was evaluated in 101 patients in the ABSORB cohort B trial. This cohort was divided in 2 subgroups: the first group (B1) underwent invasive imaging with quantitative coronary angiography, IVUS, and OCT postprocedurally, at 6 months, and at 24 months; whereas the second group (B2) underwent invasive imaging postprocedurally, at 12 months, and at 36 months. In the entire cohort B population, the overall MACE rate was 9.0%, including 3 non-Q wave MIs and 6 ischemia-driven TLRs, without cardiac death during the 2-year follow-up. There were no possible, probable, or definite scaffold thromboses despite dual antiplatelet therapy rates of 97% at 6 months, 81.2% at 12 months, and 24.8% at 24 months.

For the cohort B1 population, serial multimodality imaging results are currently available.<sup>55</sup> Serial angiographic analyses showed that in-scaffold LLL of 0.16 mm at 6 months increased to 0.27 mm at 2 years. Notably, serial IVUS analyses demonstrated that the mean lumen area increased, whereas the minimum lumen area remained stable between 6 months and 2 years (Fig. 6). Percentage hypercholesterogenic area, a more sensitive parameter to measure degradation of polymeric material, decreased from 25.3% postprocedurally to 20.4% at 6 months and to 13.8% at 2 years. Similar to IVUS, serial OCT investigation confirmed the progressive increase in mean scaffold area from 7.47 mm<sup>2</sup> postprocedurally, to 7.70 mm<sup>2</sup> at 6 months, and 8.24 mm<sup>2</sup> at 24 months.

The promising results of Absorb BVS constitute the proof of concept that this device can adequately revascularize coronary vessels and prevent restenosis. The Absorb BVS acquired the CE mark approval in January 2011, and since September 2012 it is commercially available in different diameters (2.5 mm, 3.0 mm, and 3.5 mm) and lengths (12 mm, 18 mm, and 28 mm). This device is now being evaluated in the ABSORB-EXTEND registry (~800 patients). A pivotal, randomized trial (ABSORB II), comparing Absorb BVS with Xience Prime EES (Abbott Vascular) in 500 patients, is simultaneously ongoing in Europe.

#### Tyrosine Polycarbonate Stent

The REVA stent (REVA Medical, San Diego, California, United States) consists of a tyrosine-derived poly carbonate that degrades into water, carbon dioxide, and ethanol. In addition to its radio-opacity, the REVA stent also has a unique "slide and lock" design that provides flexibility. This design maintains the acute lumen gain following stent deployment, and provides additional support to the scaffold during vessel remodeling. The RESORB FIM trial enrolled 27 patients. The in-stent LLL was disappointingly high (1.81 mm) and IVUS data showed no vessel recoil as indicated by external elastic lamina area (15.5 mm<sup>2</sup> postprocedurally and 15.3 mm<sup>2</sup> at 6 months). There was a high rate of TLR (66.7%) between 4 months and 6 months, mostly due to excessive neointimal hyperplasia.<sup>56</sup> The second generation ReZolve stent had a more robust polymer, a "spiral" slide and lock system, and a coating of sirolimus. Furthermore, the ReZolve2 stent had a smaller profile (1.52 mm) and achieved approximately 30% increase in radial strength. The safety and efficacy of the ReZolve or ReZolve2 stent is currently under investigation in the RESTORE study (50 patients) that was initiated in December 2011. Preliminary data (26 patients) showed that technical success rate was 85%, due to the delivery failure seen in 4 patients. Two cases with TLR as a primary endpoint were reported at 6-months follow-up.<sup>57</sup>



**Figure 6.** Serial changes in intravascular ultrasound measurements over postprocedure, 6 months, and 2 years after Absorb BVS implantation. NIH, neointimal hyperplasia. IVUS, intravascular ultrasound.

### Myolimus-eluting Poly-L-Lactic Acid Scaffold: DESolve

DESolve BRS (Elixir Medical; Sunnyvale, California, United States) has a similar PLLA backbone to the Absorb BVS, but it is coated with myolimus (3  $\mu\text{g}/\text{mm}$ ), an mTOR inhibitor macrocyclic lactone, and a sirolimus analogue. Sufficient radial strength was achieved over 3 months and the bioresorption of the scaffold was observed between 1 year and 2 years. The DESolve-I FIM trial (16 patients) demonstrated that the rate of acute recoil was 6.4%, and in-scaffold LLL was 0.19 mm at 6 months.<sup>58</sup> In IVUS investigation, the respective mean scaffold area and lumen area was 5.35 mm<sup>2</sup> and 5.35 mm<sup>2</sup> postprocedurally, and 5.61 mm<sup>2</sup> and 5.10 mm<sup>2</sup> at 6 months ( $P$ =no significant). OCT revealed that 98.7% of the struts were covered at 6 months. All patients were clinically followed up to 1 year, and 3 patients experienced MACE including 1 cardiac death, 1 target vessel MI, and 1 TLR. There were no patients with the evidence of ST. The DESolve Nx trial is currently enrolling 120 patients treated with the next generation DESolve Nx stent with novolimus (5  $\mu\text{g}/\text{mm}$ ), which is an active metabolite of sirolimus.<sup>59</sup>

### Poly Salicylic Acid Stent: IDEAL

The IDEAL BRS (Xenogenics Corp.; Canton, Massachusetts, United States) has 2 components: the backbone and the drug layer. The backbone of the device is made of polylactide anhydride mixed with a polymer of salicylic acid and sebacic acid linker. The drug layer consists of salicylate that controls the release of the antiproliferative drug sirolimus. The presence of salicylic acid provides the device with anti-inflammatory properties, which have been confirmed in preclinical studies.<sup>60</sup> The IDEAL BRS was tested in a small number of humans (11 patients) in 2008. Although this study has not been fully reported, there was insufficient neointimal suppression and a reduction in lumen area due to inadequate drug dosing and rapid release of the sirolimus.<sup>61</sup> The second generation IDEAL BioStent has a higher drug dose, slower drug-release kinetics, and a smaller system profile. The device is currently undergoing preclinical evaluation.

### Arterial Remodeling Technologies Bioresorbable Scaffold

The ART BRS (Arterial Remodeling Technologies; Noisy le Roi, France) is manufactured from a PDLA amorphous polymer

without an antiproliferative drug. This device is 6 Fr compatible, and provides transient scaffolding for 5 months to 7 months. Full resorption occurs within 18 months. The performance of the ART BRS was compared with the BMS in rabbit and porcine models, and no MACE was reported. The acute recoil was comparable to BMS. Interestingly, angiographic analyses demonstrated the phenomenon of late lumen enlargement, as well as increased external elastic lamina area detected by IVUS at 9 months. Based on the results of preclinical studies, the ARTDIVA FIM trial has already commenced and is recruiting patients at 5 sites in France. It aims to evaluate clinical outcomes at 6 months.<sup>62</sup>

### Xinsorb Bioresorbable Scaffold

The Xinsorb BRS (Huaan Biotechnology; Laiwu, China) is a fully bioresorbable sirolimus-loaded scaffold that consists of PLLA, polylactide-co-glycolide, and poly-L-lactide-co- $\epsilon$ -caprolactone. An experimental study evaluated the feasibility of Xinsorb BRS in comparison with the Excel DES (JW Medical; Shandong, China). Sixteen Xinsorb scaffolds and 16 Excel stents were implanted in the coronary arteries of porcine models.<sup>63</sup> In vitro drug-elution kinetics indicated that 78% of sirolimus was released from Xinsorb BRS within the first 14 days. Histomorphometry demonstrated a significantly lower percentage diameter restenosis in the Xinsorb BRS compared to the Excel DES (18.6% vs 21.4% at 30 days and 24.5% vs 27.7% at 90 days, respectively). In addition, the struts of the Xinsorb BRS were completely covered by neointima at 90 days.<sup>64</sup> Although these preliminary results are encouraging, further extensive preclinical studies are necessary to investigate the safety and efficacy of this device. The company is expecting to organize a FIM trial in the year 2013.

### Other Bioresorbable Scaffolds

The Amaranth PLLA scaffold (Amaranth Medical; Mountain View, California, United States) and the On-ABS (OrbusNeich, Hong Kong, China) are currently under preclinical evaluation. In addition, there are several other devices that are still under development. These include the Sahajanand BRS (Sahajanand Medical Technologies; Surat, India), the Avatar BRS (S3 V; Hyderabad, India), the MeRes BRS (Meril Life Sciences; Vapi, Gujarat, India), and the Zorion BRS (Zorion Medical; Indianapolis, Indiana, United States).

	BA	BMS	DES	VRT
Acute occlusion	–	+	+	+
Acute ST	N/A	–/+	+	+
Subacute ST	N/A	+	+	+
Acute recoil	–	+	+	+
Constrictive remodelling	–	+	+	+
Neointimal hyperplasia	–	–	+	+
Expansive remodeling	+	–	–	+
Late luminal enlargement	+	–	–	+
Late or very late ST	N/A	–	–	+/?

**Figure 7.** Schematic illustration presenting the evolution of percutaneous coronary interventions. BA, balloon angioplasty; BMS, bare metal stents; DES, drug-eluting metallic stents; N/A, not applicable because of the absence of stent; ST, stent thrombosis; VRT, vascular reparative therapy. “+” implies prevented or not restricted, whilst “–” implies not prevented or restricted. Modified with permission from Serruys et al.<sup>67</sup>

## FUTURE PERSPECTIVES

The new enemy in the DES era—ST—has accelerated technological evolution in interventional cardiology. Newer generation DES, with biodegradable polymers, have shown an impressive reduction in VLST, contributing to improved long-term outcomes, as compared to first generation DES. The polymer-free DES or BRS are relatively new technologies, with many trials still in progress. The currently available angiographic, intravascular imaging, and clinical data, suggest acceptable safety and efficacy of these new technologies. However, it remains unclear as to whether biodegradable-polymer DES or polymer-free DES can minimize late ST events, particularly as these late events have also been observed in patients receiving BMS.<sup>65,66</sup> Furthermore, considering the fatal consequences of ST, focus should be maintained on the eradication, rather than the minimization of this serious complication. There is a fundamental difference in concept between the DES and the BRS technologies, with the latter having a capability of liberating the vessel from a permanent metallic cage. Therefore, BRS technology has a theoretical advantage in reducing ST by means of endoluminal prosthesis elimination. BRS also facilitates the restoration of vasomotor function, which indirectly results in the completeness of vessel healing. The entire process of this treatment has been hence named as vascular reparative therapy (Fig. 7).<sup>67</sup>

One possible fate of the stenotic lesion treated with metallic stents is the development of in-stent neointimal tissue (even seen with DES), where the antiproliferative drug slows down or postpones the phenomenon. This neointimal tissue may in turn become atherosclerotic, degenerate to a vulnerable plaque, and finally rupture inside the cage of the stent (ie, neoatherosclerosis).<sup>68,69</sup> A stiff metallic stent can also alter vessel geometry and biomechanics, which may result in long-term flow disturbances and chronic irritation, in addition to the risk of late strut fractures, which potentially contribute to restenosis and adverse clinical events.<sup>70,71</sup> From a physiological perspective, the absence of a rigid metallic cage facilitates the restoration of vasomotor function,

adaptive shear stress, and late luminal enlargement. After bioresorption, there would be no triggers for thrombosis, such as uncovered struts or durable polymers. The absence of foreign materials may also reduce concerns about future treatment options, such as precluding bypass-graft surgery, and the requirements for long-term dual antiplatelet therapy with a potential reduction in associated bleeding complications. Since BRS have only been evaluated in limited patients with noncomplex lesions, the feasibility of these devices in complex lesions requires further clinical evaluation. In addition, future investigations are required to establish if BRS technology is superior to permanent metallic DES.

## CONCLUSIONS

Newer metallic DES technology has proven to decrease the risk of revascularization and ST events. The optimal design, however, of scaffolds, polymers, antiproliferative drugs and their degradation/release kinetics is still under investigation. BRS technology is anticipated not only to eliminate the risk of VLST, but also to contribute to the restoration of physiological function of treated vessels. Although further technical development and clinical evaluation are required before BRS can be accepted as the ultimate device for the treatment of coronary artery disease, this new technology looks promising and could be the next revolution in interventional cardiology.

## CONFLICTS OF INTEREST

None declared.

## REFERENCES

1. Gruntzig AR, Senning A, Siegenthaler WE. Nonoperative dilatation of coronary-artery stenosis: percutaneous transluminal coronary angioplasty. *N Engl J Med.* 1979;301:61–8.

2. Sigwart U, Puel J, Mirkovitch V, Joffre F, Kappenberger L. Intravascular stents to prevent occlusion and restenosis after transluminal angioplasty. *N Engl J Med*. 1987;316:701-6.
3. Sigwart U, Urban P, Golf S, Kaufmann U, Imbert C, Fischer A, et al. Emergency stenting for acute occlusion after coronary balloon angioplasty. *Circulation*. 1988;78(5 Pt 1):1121-7.
4. Serruys PW, De Jaegere P, Kiemeneij F, Macaya C, Rutsch W, Heyndrickx G, et al. A comparison of balloon-expandable-stent implantation with balloon angioplasty in patients with coronary artery disease. Benestent Study Group. *N Engl J Med*. 1994;331:489-95.
5. Hoffmann R, Mintz GS, Dussaillant GR, Popma JJ, Pichard AD, Satler LF, et al. Patterns and mechanisms of in-stent restenosis. A serial intravascular ultrasound study. *Circulation*. 1996;94:1247-54.
6. Morice MC, Serruys PW, Sousa JE, Fajadet J, Ban Hayashi E, Perin M, et al. A randomized comparison of a sirolimus-eluting stent with a standard stent for coronary revascularization. *N Engl J Med*. 2002;346:1773-80.
7. Stone GW, Ellis SG, Cox DA, Hermiller J, O'Shaughnessy C, Mann JT, et al. A polymer-based, paclitaxel-eluting stent in patients with coronary artery disease. *N Engl J Med*. 2004;350:221-31.
8. Nordmann AJ, Briel M, Bucher HC. Mortality in randomized controlled trials comparing drug-eluting vs. bare metal stents in coronary artery disease: a meta-analysis. *Eur Heart J*. 2006;27:2784-814.
9. Camenzind E, Steg PG, Wijns W. Stent thrombosis late after implantation of first-generation drug-eluting stents: a cause for concern. *Circulation*. 2007;115:1440-55. discussion 55.
10. Joner M, Finn AV, Farb A, Mont EK, Kolodgie FD, Ladich E, et al. Pathology of drug-eluting stents in humans: delayed healing and late thrombotic risk. *J Am Coll Cardiol*. 2006;48:193-202.
11. Virmani R, Guagliumi G, Farb A, Musumeci G, Grieco N, Motta T, et al. Localized hypersensitivity and late coronary thrombosis secondary to a sirolimus-eluting stent: should we be cautious? *Circulation*. 2004;109:701-5.
12. Rasmussen K, Maeng M, Kaltoft A, Thyssen P, Kelbaek H, Tilsted HH, et al. Efficacy and safety of zotarolimus-eluting and sirolimus-eluting coronary stents in routine clinical care (SORT OUT III): a randomised controlled superiority trial. *Lancet*. 2010;375:1090-9.
13. Stone GW, Rizvi A, Newman W, Mastali K, Wang JC, Caputo R, et al. Everolimus-eluting versus paclitaxel-eluting stents in coronary artery disease. *N Engl J Med*. 2010;362:1663-74.
14. Kedhi E, Joesoef KS, McFadden E, Wassing J, Van Mieghem C, Goedhart D, et al. Second-generation everolimus-eluting and paclitaxel-eluting stents in real-life practice (COMPARE): a randomised trial. *Lancet*. 2010;375:201-9.
15. Stefanini GG, Kalesan B, Serruys PW, Heg D, Buszman P, Linke A, et al. Long-term clinical outcomes of biodegradable polymer biolimus-eluting stents versus durable polymer sirolimus-eluting stents in patients with coronary artery disease (LEADERS): 4 year follow-up of a randomised non-inferiority trial. *Lancet*. 2011;378:1940-8.
16. Finn AV, Nakazawa G, Joner M, Kolodgie FD, Mont EK, Gold HK, et al. Vascular responses to drug eluting stents: importance of delayed healing. *Arterioscler Thromb Vasc Biol*. 2007;27:1500-10.
17. De la Torre Hernandez JM, Windecker S. Trombosis muy tardía con nuevos stents farmacocativos: ¿ha dejado de ser un asunto relevante? *Rev Esp Cardiol*. 2012;65:595-8.
18. Grube E, Sonoda S, Ikeno F, Honda Y, Kar S, Chan C, et al. Six- and twelve-month results from first human experience using everolimus-eluting stents with bioabsorbable polymer. *Circulation*. 2004;109:2168-71.
19. Byrne RA, Kastrati A, Massberg S, Wiecezorek A, Laugwitz KL, Hadamitzky M, et al. Biodegradable polymer versus permanent polymer drug-eluting stents and everolimus- versus sirolimus-eluting stents in patients with coronary artery disease: 3-year outcomes from a randomized clinical trial. *J Am Coll Cardiol*. 2011;58:1325-31.
20. Windecker S, Serruys PW, Wandel S, Buszman P, Trznel S, Linke A, et al. Biolimus-eluting stent with biodegradable polymer versus sirolimus-eluting stent with durable polymer for coronary revascularisation (LEADERS): a randomised non-inferiority trial. *Lancet*. 2008;372:1163-73.
21. Serruys PW, Buszman P, Linke A, Ischinger T, Antoni D, Klaus V, et al. TCT-44 LEADERS: 5-year follow-up from a prospective, randomized trial of biolimus A9-eluting stents with a biodegradable polymer vs. sirolimus-eluting stents with a durable polymer- final report of the LEADERS study. *J Am Coll Cardiol*. 2012;60:B13-4.
22. Stefanini GG, Byrne RA, Serruys PW, De Waha A, Meier B, Massberg S, et al. Biodegradable polymer drug-eluting stents reduce the risk of stent thrombosis at 4 years in patients undergoing percutaneous coronary intervention: a pooled analysis of individual patient data from the ISAR-TEST 3, ISAR-TEST 4, and LEADERS randomized trials. *Eur Heart J*. 2012;33:1214-22.
23. Meredith IT, Verhey S, Dubois CL, Dens J, Fajadet J, Carrie D, et al. Primary endpoint results of the EVOLVE trial: a randomized evaluation of a novel bioabsorbable polymer-coated, everolimus-eluting coronary stent. *J Am Coll Cardiol*. 2012;59:1362-70.
24. Farooq V, Gogas BD, Serruys PW. Restenosis: delineating the numerous causes of drug-eluting stent restenosis. *Circ Cardiovasc Interv*. 2011;4:195-205.
25. Mehilli J, Byrne RA, Wiecezorek A, Iijima R, Schulz S, Bruskina O, et al. Randomized trial of three rapamycin-eluting stents with different coating strategies for the reduction of coronary restenosis. *Eur Heart J*. 2008;29:1975-82.
26. Byrne RA, Kufner S, Tiroch K, Massberg S, Laugwitz KL, Birkmeier A, et al. Randomised trial of three rapamycin-eluting stents with different coating strategies for the reduction of coronary restenosis: 2-year follow-up results. *Heart*. 2009;95:1489-94.
27. King L, Byrne RA, Mehilli J, Schomig A, Kastrati A, Pache J. Five-year clinical outcomes of a polymer-free sirolimus-eluting stent versus a permanent polymer paclitaxel-eluting stent: final results of the intracoronary stenting and angiographic restenosis—test equivalence between two drug-eluting stents (ISAR-TEST) trial. *Catheter Cardiovasc Interv*. 2013;81:E23-8.
28. Tada N, Virmani R, Grant G, Bartlett L, Black A, Clavijo C, et al. Polymer-free biolimus a9-coated stent demonstrates more sustained intimal inhibition, improved healing, and reduced inflammation compared with a polymer-coated sirolimus-eluting cypher stent in a porcine model. *Circ Cardiovasc Interv*. 2010;3:174-83.
29. Grube E, Mueller R, Schuler G, Hauptmann KE, Schofer J. TCT-46: Comparison of polymer-free BioFreedom stents with durable polymer Taxus Liberé stents: 3-year results from the BioFreedom first-in-man trial. *J Am Coll Cardiol*. 2012;60:B14.
30. Costa Jr JR, Abizaid A, Costa R, Feres F, Tanajura LF, Maldonado G, et al. 1-year results of the hydroxyapatite polymer-free sirolimus-eluting stent for the treatment of single de novo coronary lesions: the VESTASync I trial. *JACC Cardiovasc Interv*. 2009;2:422-7.
31. Costa Jr JR. VESTASync (MIV Therapeutics) program update. *Transcatheter Cardiovascular Therapeutics*. 2012.
32. Yu M, Xu B, Wu Y, Yan H, Chen J, Qian J, et al. TCT-229: First report of a novel polymer-free dual-drug eluting stent in de novo coronary artery disease: results of the first in man BICARE trial. *J Am Coll Cardiol*. 2011;58(20S1):B62.
33. Massberg S, Byrne RA, Kastrati A, Schulz S, Pache J, Hausleiter J, et al. Polymer-free sirolimus- and probucol-eluting versus new generation zotarolimus-eluting stents in coronary artery disease: the intracoronary stenting and angiographic results: test efficacy of sirolimus- and probucol-eluting versus zotarolimus-eluting stents (ISAR-TEST 5) trial. *Circulation*. 2011;124:624-32.
34. Carrie D, Berland J, Verhey S, Hauptmann KE, Vrolix M, Violini R, et al. A multicenter randomized trial comparing amphilimus- with paclitaxel-eluting stents in de novo native coronary artery lesions. *J Am Coll Cardiol*. 2012;59:1371-6.
35. Carrie D. Cre8 program update. *Transcatheter Cardiovascular Therapeutics*. 2012.
36. Aoki J, Serruys PW, Van Beusekom H, Ong AT, McFadden EP, Sianos G, et al. Endothelial progenitor cell capture by stents coated with antibody against CD34: the HEALING-FIM (healthy endothelial accelerated lining inhibits neointimal growth—first in man) registry. *J Am Coll Cardiol*. 2005;45:1574-9.
37. Haude M. REMEDEE COMBO program update. *Transcatheter Cardiovascular Therapeutics*. 2012.
38. Seth A. Nanoparticle based stents FOCUSnp program update. *Transcatheter Cardiovascular Therapeutics*. 2012.
39. Stack RS, Califf RM, Phillips HR, Pryor DB, Quigley PJ, Bauman RP, et al. Interventional cardiac catheterization at Duke Medical Center. *Am J Cardiol*. 1988;62(10 Pt 2):F3-24.
40. Zidar J, Lincoff A, Stack R. Biodegradable stents. In: Topol EJ, editor. *Textbook of interventional cardiology*. 2nd ed. Philadelphia: Saunders; 1994. p. 787-802.
41. Waksman R. The disappearing stent: when plastic replaces metal. *Circulation*. 2012;125:2291-4.
42. Van der Giessen WJ, Lincoff AM, Schwartz RS, Van Beusekom HM, Serruys PW, Holmes Jr DR, et al. Marked inflammatory sequelae to implantation of biodegradable and nonbiodegradable polymers in porcine coronary arteries. *Circulation*. 1996;94:1690-7.
43. Tamai H, Igaki K, Kyo E, Kosuga K, Kawashima A, Matsui S, et al. Initial and 6-month results of biodegradable poly-L-lactic acid coronary stents in humans. *Circulation*. 2000;102:399-404.
44. Onuma Y, Garg S, Okamura T, Ligthart J, Van Geuns RJ, De Feyter PJ, et al. Ten-year follow-up of the IGAKI-TAMAI stent. A posthumous tribute to the scientific work of Dr. Hideo Tamai EuroIntervention. 2009;5 Suppl. F:F109-11.
45. Heublein B, Rohde R, Kaese V, Niemeier M, Hartung W, Haverich A. Biocorrosion of magnesium alloys: a new principle in cardiovascular implant technology? *Heart*. 2003;89:651-6.
46. Waksman R, Pakala R, Kuchulakanti PK, Baffour R, Hellinga D, Seabron R, et al. Safety and efficacy of bioabsorbable magnesium alloy stents in porcine coronary arteries. *Catheter Cardiovasc Interv*. 2006;68:607-17. discussion 18-9.
47. Erbel R, Di Mario C, Bartunek J, Bonnier J, De Bruyne B, Eberli FR, et al. Temporary scaffolding of coronary arteries with bioabsorbable magnesium stents: a prospective, non-randomised multicentre trial. *Lancet*. 2007;369:1869-75.
48. Ghimire G, Spiro J, Kharbada R, Roughton M, Barlis P, Mason M, et al. Initial evidence for the return of coronary vasoreactivity following the absorption of bioabsorbable magnesium alloy coronary stents. *EuroIntervention*. 2009;4:481-4.
49. Haude M, Erbel R, Erne P, Verhey S, Degen H, Böse D, et al. Safety and performance of the drug-eluting absorbable metal scaffold (DREAMS) in patients with de-novo coronary lesions: 12 month results of the prospective, multicentre, first-in-man BIOSOLVE-I trial. *Lancet*. 2013;12:61765-6. <http://dx.doi.org/10.1016/S0140-6736>.
50. Ormiston JA, Serruys PW, Regar E, Dudek D, Thuesen L, Webster MW, et al. A bioabsorbable everolimus-eluting coronary stent system for patients with single de-novo coronary artery lesions (ABSORB): a prospective open-label trial. *Lancet*. 2008;371:899-907.

51. Serruys PW, Ormiston JA, Onuma Y, Regar E, Gonzalo N, Garcia-Garcia HM, et al. A bioabsorbable everolimus-eluting coronary stent system (ABSORB): 2-year outcomes and results from multiple imaging methods. *Lancet*. 2009;373:897–910.
52. Onuma Y, Nieman K, Webster M, Thuesen L, Dudek D, Ormiston JA, et al. TCT-37: Five-year clinical outcomes and non-invasive angiographic imaging results with functional assessment after bioresorbable everolimus-eluting scaffold implantation in patients with de novo coronary artery disease. *J Am Coll Cardiol*. 2012;60:B11.
53. Tanimoto S, Bruining N, Van Domburg RT, Rotger D, Radeva P, Ligthart JM, et al. Late stent recoil of the bioabsorbable everolimus-eluting coronary stent and its relationship with plaque morphology. *J Am Coll Cardiol*. 2008;52:1616–20.
54. Serruys PW, Onuma Y, Dudek D, Smits PC, Koolen J, Chevalier B, et al. Evaluation of the second generation of a bioresorbable everolimus-eluting vascular scaffold for the treatment of de novo coronary artery stenosis: 12-month clinical and imaging outcomes. *J Am Coll Cardiol*. 2011;58:1578–88.
55. Ormiston JA, Serruys PW, Onuma Y, Van Geuns RJ, De Bruyne B, Dudek D, et al. First serial assessment at 6 months and 2 years of the second generation of absorb everolimus-eluting bioresorbable vascular scaffold: a multi-imaging modality study. *Circ Cardiovasc Interv*. 2012;5:620–32.
56. Grube E. Bioabsorbable stent. The Boston Scientific and REVA technology. *EuroPCR*. 2009. Barcelona; 2009.
57. Costa RA. REVA ReZolve clinical program update. *Transcatheter Cardiovascular Therapeutics*. 2012.
58. Yan J, Bhat VD. Elixir Medical's bioresorbable drug eluting stent (BDES) programme: an overview. *EuroIntervention*. 2009;5 Suppl. F:80–2.
59. Verheye S. First-in-man results with a sirolimus-eluting bioresorbable PLLA-based vascular scaffold. *Transcatheter Cardiovascular Therapeutics*. 2012.
60. Jabara R, Chronos N, Robinson K. Novel bioabsorbable salicylate-based polymer as a drug-eluting stent coating. *Catheter Cardiovasc Interv*. 2008;72:186–94.
61. Jabara R, Chronos N, Robinson K. Novel fully bioabsorbable salicylate-based sirolimus-eluting stent. *EuroIntervention*. 2009;5 Suppl. F:F58–64.
62. Fajadet J. The ART stent: design and early first-in-man experiences. *Transcatheter Cardiovascular Therapeutics*. 2012.
63. Shen L, Wang Q, Wu Y, Xie J, Zhang F, Ge L, et al. Preliminary evaluation of fully bioabsorbable PLLA sirolimus eluting stents in a porcine model. *Chin J Intervent Cardiol*. 2009;19:301–5.
64. Shen L, Wang Q, Wu Y, Xie J, Ge J. Short-term effects of sirolimus eluting fully bioabsorbable polymeric coronary stents in a porcine model. *Transcatheter Cardiovascular Therapeutics*. 2011.
65. Daemen J, Wenaweser P, Tsuchida K, Abrecht L, Vaina S, Morger C, et al. Early and late coronary stent thrombosis of sirolimus-eluting and paclitaxel-eluting stents in routine clinical practice: data from a large two-institutional cohort study. *Lancet*. 2007;369:667–78.
66. Stettler C, Wandel S, Allemann S, Kastrati A, Morice MC, Schomig A, et al. Outcomes associated with drug-eluting and bare-metal stents: a collaborative network meta-analysis. *Lancet*. 2007;370:937–48.
67. Serruys PW, Garcia-Garcia HM, Onuma Y. From metallic cages to transient bioresorbable scaffolds: change in paradigm of coronary revascularization in the upcoming decade? *Eur Heart J*. 2012;33:16–25.
68. Ramcharitar S, Garcia-Garcia HM, Nakazawa G, Kukreja N, Ligthart J, Virmani R, et al. Ultrasonic and pathological evidence of a neo-intimal plaque rupture in patients with bare metal stents. *EuroIntervention*. 2007;3:290–1.
69. Nakazawa G, Otsuka F, Nakano M, Vorpahl M, Yazdani SK, Ladich E, et al. The pathology of neoatherosclerosis in human coronary implants bare-metal and drug-eluting stents. *J Am Coll Cardiol*. 2011;57:1314–22.
70. Wentzel JJ, Whelan DM, Van der Giessen WJ, Van Beusekom HM, Andharyswara I, Serruys PW, et al. Coronary stent implantation changes 3-D vessel geometry and 3-D shear stress distribution. *J Biomech*. 2000;33:1287–95.
71. Wentzel JJ, Gijzen FJ, Schuurbiens JC, Van der Steen AF, Serruys PW. The influence of shear stress on in-stent restenosis and thrombosis. *EuroIntervention*. 2008;4 Suppl. C:C27–32.