

Molecular characterization of irinotecan (SN-38) resistant human breast cancer cell lines

Jandu, Haatisha; Aluzaitė, Kristina; Fogh, Louise; Thrane, Sebastian Wingaard; Noer, Julie B.; Proszek, Joanna; Nguyen Do, Khoa; Hansen, Stine Ninel; Damsgaard, Britt; Nielsen, Signe Lykke; Stougaard, Magnus; Knudsen, Birgitta R.; Moreira, Jose; Hamerlik, Petra; Gajjar, Madhavsai; Smid, Marcel; Martens, John; Foekens, John; Pommier, Yves; Brunner, Nils; Schrohl, Anne-Sofie; Stenvang, Jan

Published in:
B M C Cancer

Link to article, DOI:
[10.1186/s12885-016-2071-1](https://doi.org/10.1186/s12885-016-2071-1)

Publication date:
2016

Document Version
Publisher's PDF, also known as Version of record

[Link back to DTU Orbit](#)

Citation (APA):
Jandu, H., Aluzaitė, K., Fogh, L., Thrane, S. W., Noer, J. B., Proszek, J., ... Stenvang, J. (2016). Molecular characterization of irinotecan (SN-38) resistant human breast cancer cell lines. *B M C Cancer*, 16(1), [34]. DOI: 10.1186/s12885-016-2071-1

DTU Library

Technical Information Center of Denmark

General rights

Copyright and moral rights for the publications made accessible in the public portal are retained by the authors and/or other copyright owners and it is a condition of accessing publications that users recognise and abide by the legal requirements associated with these rights.

- Users may download and print one copy of any publication from the public portal for the purpose of private study or research.
- You may not further distribute the material or use it for any profit-making activity or commercial gain
- You may freely distribute the URL identifying the publication in the public portal

If you believe that this document breaches copyright please contact us providing details, and we will remove access to the work immediately and investigate your claim.

RESEARCH ARTICLE

Open Access



Molecular characterization of irinotecan (SN-38) resistant human breast cancer cell lines

Haatisha Jandu¹, Kristina Aluzaitė¹, Louise Fogh¹, Sebastian Wingaard Thrane¹, Julie B. Noer¹, Joanna Proszek², Khoa Nguyen Do³, Stine Ninel Hansen¹, Britt Damsgaard¹, Signe Lykke Nielsen¹, Magnus Stougaard², Birgitta R. Knudsen⁴, José Moreira¹, Petra Hamerlik⁵, Madhavsai Gajjar⁵, Marcel Smid⁶, John Martens⁶, John Foekens⁶, Yves Pommier⁷, Nils Brünner¹, Anne-Sofie Schrohl¹ and Jan Stenvang^{1*}

Abstract

Background: Studies in taxane and/or anthracycline refractory metastatic breast cancer (mBC) patients have shown approximately 30 % response rates to irinotecan. Hence, a significant number of patients will experience irinotecan-induced side effects without obtaining any benefit. The aim of this study was to lay the groundwork for development of predictive biomarkers for irinotecan treatment in BC.

Methods: We established BC cell lines with acquired or *de novo* resistance to SN-38, by exposing the human BC cell lines MCF-7 and MDA-MB-231 to either stepwise increasing concentrations over 6 months or an initial high dose of SN-38 (the active metabolite of irinotecan), respectively. The resistant cell lines were analyzed for cross-resistance to other anti-cancer drugs, global gene expression, growth rates, *TOP1* and *TOP2A* gene copy numbers and protein expression, and inhibition of the breast cancer resistance protein (ABCG2/BCRP) drug efflux pump.

Results: We found that the resistant cell lines showed 7–100 fold increased resistance to SN-38 but remained sensitive to docetaxel and the non-camptothecin Top1 inhibitor LMP400. The resistant cell lines were characterized by Top1 down-regulation, changed isoelectric points of Top1 and reduced growth rates. The gene and protein expression of ABCG2/BCRP was up-regulated in the resistant sub-lines and functional assays revealed BCRP as a key mediator of SN-38 resistance.

Conclusions: Based on our preclinical results, we suggest analyzing the predictive value of the BCRP in breast cancer patients scheduled for irinotecan treatment. Moreover, LMP400 should be tested in a clinical setting in breast cancer patients with resistance to irinotecan.

Keywords: Breast cancer, Topoisomerase I, Irinotecan, SN-38, Resistance, ABCG2/BCRP

Background

First-line chemotherapy of recurrent breast cancer (BC) is dependent on the type of prior adjuvant treatment but it most often consists of repeated cycles of anthracyclines and/or taxanes, possibly combined with cyclophosphamide, with standard combinations typically associated with

response rates of about 50–60 % [1]. Second-line treatment may include 5-fluorouracil (5-FU), gemcitabine, or vinorelbine, and typically show response rates of 30–40 % [2]. Additional lines of treatment are also available in clinical management of BC, but whenever a new line of treatment is introduced patients show increasingly lower response rates. Evidently, there is a critical need for more efficient therapeutic intervention in metastatic breast cancer (mBC) since many BC patients are exposed to chemotherapy, with its ensuing side effects, without having any benefit from the treatment. An improved therapeutic index (benefit/side effect) may be achieved by identification of non-cross-

* Correspondence: stenvang@sund.ku.dk

¹Faculty of Health and Medical Sciences, Department of Veterinary Disease Biology, Section for Molecular Disease Biology and Sino-Danish Breast Cancer Research Centre, University of Copenhagen, Strandboulevarden 49, DK-2100 Copenhagen, Denmark

Full list of author information is available at the end of the article



resistant therapeutic options and/or by identification of relevant predictive biomarkers to be used to identify patients with the highest likelihood of benefit from a particular treatment.

Chemotherapeutic agents that target the Topoisomerase I protein (Top1) are routinely used in treatment of metastatic colorectal cancer [3] and have significant effect in other cancer types as well, including glioblastoma multiforme, upper gastrointestinal cancers, pancreatic cancer, ovarian cancer, small cell lung cancer and cervical cancer [4]. Currently used Top1 targeting drugs, such as irinotecan, etirinotecan (NKTR-102), or topotecan are derivatives of camptothecin. However, non-camptothecin derived next generation Top1 inhibitors, such as indenoisoquinolines, are currently being tested in clinical trials [4, 5] with promising results (<http://clinicaltrials.gov/show/NCT01245192>).

Irinotecan, etirinotecan and topotecan have also been tested in clinical trials in mBC [6], and irinotecan and etirinotecan regimens were shown to benefit a considerable proportion of mBC patients who had relapsed on prior treatment with anthracyclines and taxanes [7, 8]. The long-acting Top1 inhibitor etirinotecan has been evaluated in a randomized phase III study; the BEACON study [8, 9]. This study is based on data from a report that evaluated etirinotecan in 70 taxane-resistant mBC patients and an objective response rate of 29 % was observed when this drug was given as second- or third-line treatment [8]. These data were reproduced in the BEACON study, which also demonstrated that etirinotecan was at least as efficient as the physician's choice of treatment [9].

With expected objective response rates of approximately 25–30 % in pre-treated mBC patients, it is highly likely that many of the patients developed cross-resistance to Top1 inhibitors during their prior treatment. For example, Top1 and Top2 inhibitors, and taxanes are all known substrates for xenobiotic drug transporters from the ABC-cassette family, which may be up-regulated during chemotherapy treatment [10]. Alternatively, resistance to Top1 inhibitors may be pre-existing and could potentially also include resistance to anthracyclines and taxanes, e.g., through up-regulation of one or more common molecular drug resistance mechanisms even before exposure to treatment.

Irrespective of the pre-existence or induction of resistance, a validated molecular drug sensitivity/resistance profile might enable physicians to identify patients who are most likely to benefit from Top1 inhibitor treatment and only offer this therapy option to these patients. Such a strategy would increase the therapeutic index of Top1 inhibitors in mBC. In that respect, it has been shown that around 30 % of BC patients possess amplifications of the *TOP1* gene [11] and a clinical trial is currently investigating if increased *TOP1* gene copy numbers may

be a predictive biomarker for response to irinotecan in BC patients [12]. However, no predictive biomarkers for Top1 inhibitor treatment are implemented for clinical use, meaning that the majority of mBC patients will experience drug-induced side effects without any therapeutic benefit. Moreover, there are unmet needs to establish exactly when Top1 inhibitors should be used in BC treatment, and to identify novel drug entities that are effective in irinotecan-resistant BC.

With the aims to search for Top1 inhibitor predictive molecular biomarkers and to identify which drugs are effective in irinotecan resistant BC cells, we have established human breast cancer cell line model systems for resistance to SN-38, the active metabolite of irinotecan. To cover a wide range of potential mechanisms, we have established four SN-38 resistant cell lines through exposure to either gradually increasing concentrations of SN-38 or a single high dose. We describe here potential molecular mechanisms of SN-38 resistance in breast cancer cells and sensitivity to other commonly used chemotherapeutic agents, as well as novel non-camptothecin Top1 targeting drugs.

Methods

Chemicals and drugs

SN-38 and Ko143 (Sigma-Aldrich, Copenhagen, Denmark), Epirubicin (2 mg/ml, Actavis Nordic A/S, Gentofte, Denmark), Cisplatin (1 mg/ml, Hospira, Denmark) and Docetaxel (20 mg/ml, Actavis Nordic A/S, Gentofte, Denmark). The indenoisoquinoline drugs LMP776 (NSC 725776) and LMP400 (NSC 743400) [4, 5, 13], were provided by the NCI Developmental Therapeutics Program (DTP), National Cancer Institute, NIH, Bethesda, MD, USA. All drugs were dissolved in dimethyl sulfoxide (DMSO) and stored at -20°C . Drugs were dissolved in culture medium immediately before use.

Cell cultures

A panel of the 52 breast cancer cell lines was propagated in complete media: RPMI 1640 (Gibco, Invitrogen, Denmark) with 10 % fetal bovine serum (FBS, Gibco, Invitrogen, Denmark) as previously described [14]. Docetaxel resistant MCF-7 and MDA-MB-231 breast cancer cell lines were grown as previously described [15].

Establishment of SN-38 resistant human breast cancer cell lines

The human breast cancer cell line MDA-MB-231 was obtained from American Type Culture Collection (ATCC, Rockville, MD). Professor Ole William Petersen (University of Copenhagen) kindly provided the human MCF-7 breast cancer cell line. MCF-7 and MDA-MB-231 cell lines were maintained in DMEM including L-glutamine medium (Gibco, Life Technologies, USA) supplemented with 10 % FBS (Gibco Invitrogen, USA) for

MDA-MB-231 cells and 5 % FBS, 1 % non-essential amino acids (NEAA, Life Technologies, USA) for MCF-7 cells. Cell lines were cultured in the presence of penicillin/streptomycin antibiotics (100 U/mL, Invitrogen) and incubated at 37 °C in a humidified environment containing 5 % CO₂. SN-38-resistant and DMSO-exposed control cell lines were maintained under the same medium conditions, supplemented with SN-38 or DMSO, respectively. All experiments were carried out in presence of SN-38 except for growth curves, cell cycle analysis and Top1 enzyme activity. The resistant cell lines were designated “acq” for acquired resistance and “de novo” for *de novo* resistance.

Initially, IC₅₀ values for SN-38 were determined by exposing cell lines to a range of SN-38 concentrations using methylthiazolyldiphenyl-tetrazolium bromide (MTT) assays to measure the response. To establish acquired resistance, the parental cell lines were exposed to SN-38 concentrations ranging from 5000- to 500-fold lower than IC₅₀ and the highest concentration that only caused minimal effect on the cells was chosen as a starting point. The cell lines with acquired resistance, MDA_{acq} and MCF-7_{acq}, were developed by exposing the parental cell lines to stepwise increasing concentrations of SN-38 (from 3.6nM – 68.2nM for MDA_{acq} and 3.0nM – 36nM for MCF-7_{acq}) over 6 months. SN-38 exposed cell lines were maintained at each drug concentration for three passages. Two resistant cell lines were obtained after a total of 24 passages for MDA_{acq} and 23 passages for MCF-7_{acq} in presence of SN-38. To establish the *de novo* resistant cell lines we initially exposed parental cell lines to SN-38 concentrations ranging from the low nM range up to 25 μM and selected the cell populations that eventually were able to re-grow with constant exposure to SN-38. Thereby, we selected *de novo* resistant cell lines, MDA_{de novo} and MCF-7_{de novo}, which survived constant exposure to 24nM for MDA_{de novo} and 12nM for MCF-7_{de novo} (Table 1). The identity of both parental and resistant cell lines was confirmed by Short Tandem Repeat (STR) analysis (Identi Cell, Aarhus, Denmark). In addition, all cell lines were confirmed to be mycoplasma-free (Mycoplasma PCR Detection Kit, Minerva Biolabs, Berlin, Germany).

Data mining of publicly available datasets

We extracted the IC₅₀ values reported for topotecan [16] and camptothecin [17] for the breast cancer cell lines present in our panel of 52 cell lines and correlated the IC₅₀ values to the *TOP1* copy numbers.

Cytotoxicity assay

In vitro drug resistance and cross-resistance were determined using the MTT and crystal violet assays as previously described [15]. Cell lines were plated for 48 h and then exposed to drugs for 72 h. Using GraphPad Prism, IC₅₀ values of three independent repeats were calculated to determine the change in resistance.

Cell growth and doubling time analysis

For the growth assay, 40,000 cells/well for MDA-MB-321 and 60,000 cells/well for MCF-7 were seeded in 6-well plates. Cells were harvested at 24 h intervals for days 1 to 8. The assay was conducted once and each well was counted manually three times at each interval. Average values were used to plot the growth curves. The doubling time of the cells in exponential phase was calculated using the formula: Doubling time = $h * \ln(2) / \ln(c2/c1)$, where c1 and c2 represent the cell numbers at the beginning and end of the exponential phase during time (h), respectively [18].

Cell cycle analysis by FACS

Fixation, propidium iodide staining and cell cycle analysis using fluorescence-activated cell sorting (FACS, BD FACSVerser™) and data analyses by FlowJo software were done as previously described [19] and analyses were repeated in two independent replicates.

Formalin fixation and paraffin embedding of cells

Cells were formalin fixed, embedded in agarose and paraffin embedded as previously described [20].

FISH analysis

A *TOP1/CEN-20* probe mix [20] and *TOP2A* FISH pharmDx™ kit (Dako, Denmark, #K5333) were applied according the manufactures instructions as previously described [21]. This analysis was conducted once.

Table 1 Establishment of SN-38 resistant cell lines

Cell Lines	SN-38 Dose	Final SN-38 concentration	IC ₅₀ Values (μM)		RR
			Resistant cell lines	DMSO control	
MDA _{acq}	Stepwise (3.6nM-68.2nM)	68.2nM	40.2 ± 4.0	5.6 ± 0.9	7.2
MCF-7 _{acq}	Stepwise (3.0nM-36nM)	36nM	33.6 ± 3.0	3.7 ± 0.5	9.1
MDA _{de novo}	Constant (24nM)	24nM	66.8 ± 16.2	0.7 ± 0.5	95.4
MCF-7 _{de novo}	Constant (12nM)	12nM	31.9 ± 0.6	2.3 ± 0.9	13.9

Mean IC₅₀-value (μM) ± standard deviation of three independent experiments. RR; relative resistance is the IC₅₀-value of the resistant cell line divided by the IC₅₀-value of their corresponding DMSO controls

Copy number data and mRNA microarray analysis on the 52 breast cancer cell lines

Gene expression data obtained by Affymetrix U133 microarray (GEO entry GSE41313) were applied [14]. Copy number data were generated using SNP6 chips from Affymetrix (Santa Clara, USA). Raw data were pre-processed using Nexus software (BioDiscovery, Hawthorne, USA) using the recommended settings for SNP calling, segmentation and copy number status provided by Nexus software.

mRNA microarray analysis on parental and the acquired resistant cell lines

Total RNA was extracted from three independent passages of 70 % confluent cells for each of the four cell lines (MCF-7 parental, MCF-7_{acq}, MDA-MB-231 parental and MDA_{acq}) using Trizol reagent (Invitrogen). Expression analysis using Agilent Human Gene Expression Microarrays (G4845A, Agilent Technologies, Santa Clara, CA, USA), image quality, background correction and normalization were conducted as previously described [22]. Sample clustering was performed by the 'ward' method in the software R (<http://www.r-project.org/>). Statistical tests were performed using a moderated *t*-test, and *p*-values were adjusted for multiple testing by the Benjamin & Hochberg method [23]. Genes were considered significantly differentially expressed if the adjusted *p*-value < 0.05 and the absolute log₂-fold change > 0.8. Gene Set Enrichment Analysis (GSEA) was performed using the ClusterProfiler package [24] using Reactome, KEGG and the GeneOntology data distributed Bioconductor project. Network analysis was performed using MetaCore from Thomson Reuters. Networks were constructed based on direct interactions in the MetaCore database for all deregulated genes with a log₂ fold change > 1 and *p*-value < 0.05. For each cell line three biological replicates were analyzed.

Availability of data and materials

The gene expression dataset supporting the conclusions of this article is available in the ArrayExpress repository, accession number E-MTAB-3224, <https://www.ebi.ac.uk/arrayexpress/experiments/E-MTAB-3224>.

Protein purification, western blotting and Peggy analyses

Cells were grown to 70 % confluence and western blotting was performed as previously described [22]. Primary antibodies were incubated at 4 °C overnight (Top1 (Abcam, UK, 1:2000), Top2A (OriGene Technologies, 1:500), BCRP (Abcam, 1:1000), MDR1 (Novus biological, Denmark, 1:1000) and β-actin (Sigma-Aldrich, Denmark, 1:15,000,000)). Species-specific horseradish peroxidase-labeled secondary antibodies were applied for 1 h at 37 °C (Anti-rabbit (Dako, Denmark): Top1 (1:10,000): and anti-

mouse (Dako, Denmark): BCRP (1:4000), MDR1 (1:5000), β-actin (1:5000)). Protein bands were quantified using ImageJ software. Three independent biological replicates were analyzed for each cell line.

Peggy analysis was performed on a nanocapillary electrophoresis analysis system (ProteinSimple, USA) for size, amount and pI pattern of Top1 (28). For size analysis, cell lysates were diluted in MPER lysis buffer with Bicine/CHAPS lysis buffer containing 2 % DMSO inhibitors (ProteinSimple) and 4X master mix/fluorescent standards (Protein Simple) according to the manufacturer's instructions. The samples were denatured for 10 min at 70 °C and pipetted into a 384-well plate along with primary antibodies (Top1 (Abcam) 1:100, β-actin (Abcam) 1:100) diluted in Antibody Diluent Plus (ProteinSimple) according to the manufacturer's instructions. For charge analysis, lysates were prepared in Bicine/CHAPS lysis buffer containing 2 % DMSO inhibitors and diluted with this and premix G2 pH 3–10 separation gradient (ProteinSimple) containing 2.2 % ladder 1 (ProteinSimple). Charge analysis samples were pipetted into a 384-well plate along with primary antibodies (Top1 (Abcam) 1:50, β-actin (Abcam) 1:50) diluted in antibody diluent (ProteinSimple) according to manufacturer's instructions. Data were processed using Compass software (ProteinSimple). The size analyses were repeated four times with two independent biological replicates and the charge analyses were conducted in biological triplicates.

Top1 enzyme activity assay

The cellular Top1 enzyme activity was analyzed as previously described [25]. Briefly, cell lines were grown in the absence of SN-38, trypsinized, counted, centrifuged and 1 million cells were pelleted for analyses in the presence or absence of SN-38. Activity assays were conducted in triplicate with three independent biological replicates.

BCRP drug-efflux pump inhibition

Cells were seeded at 10,000 cells/well in 96-well plates and allowed to adhere for 48 h at 37 °C. Cell lines were exposed to SN-38 with or without Ko143, a specific BCRP inhibitor (Sigma Aldrich) for 72 h. Cell viability was assessed using MTT assays with triplicate determinations from three independent biological passages.

Statistics

MTT data were analyzed in Excel by two-tailed Student's *T*-test assuming equal variance and *p*-values below 0.05 was considered statistically significant. A non-parametric test (Kruskal-Wallis) was used to associate the *TOP1* copy number (CN)-status with mRNA expression levels with the order of groups being CN loss, CN neutral and

CN gain and a two-sided p -value below 0.05 was considered statistically significant.

Results

Topoisomerase 1 as predictor of response to SN-38

Increased *TOP1* CN, Top1 mRNA or protein expression or enzyme activity has been correlated to cancer cells' sensitivity to Top1 targeting drugs [20, 26–29]. To further explore this in breast cancer cells, we initially applied a FISH *TOP1*/CEN-20 probe mixture [20] to a repository consisting of 52 human breast cancer cell lines to analyze the distribution of *TOP1* and CEN-20 CN and the *TOP1*/CEN-20 ratios in these cell lines (Additional file 1: Figure S1a). The *TOP1* CN varied from 1.2 (BT474) to 5.5 (HCC1419). There was a trend towards association between *TOP1* and CEN-20 copy numbers as reflected in a *TOP1*/CEN-20 ratio close to 1 for the majority of the cell lines (Additional file 1: Figure S1a). Comparing FISH-derived *TOP1* CNs to either SNP-derived CNs or to *TOP1* mRNA expression we found significant associations ($p < 0.0001$ and $p = 0.0012$, respectively) indicating that the *TOP1* genes are actively transcribed even in cell lines with many *TOP1* copies (Additional file 1: Figure S1b,c). Based on the status of *TOP1* CN, HER2 and estrogen receptors (ER), we then selected 9 breast cancer cell lines from the panel of the 52 characterized cell lines (Additional file 1: Figure S1d). In these selected cell lines the Spearman's correlation coefficient between the *TOP1* CN and gene expression levels was 0.64 ($p = 0.067$) and Top1 appeared to be functional because the cellular Top1 enzyme activity could be impaired by SN-38 (Additional file 1: Figure S2b). The *TOP1* CN corresponded well to the Top1 protein levels observed in western blots, except for the HCC70 cell line (Additional file 1: Figure S2a), and also correlated significantly ($r = 0.70$, $p = 0.035$) to the Top1 enzyme activity (data not shown). These 9 cell lines were then tested for sensitivity to SN-38 (Additional file 1: Figure S2c) to evaluate the correlation of *TOP1* CN or *TOP1* gene expression and sensitivity to SN-38. We found non-significant negative Spearman's correlation coefficients between the IC_{50} values and the *TOP1* CN ($r = -0.20$, $p = 0.61$) or the *TOP1* mRNA ($r = -0.17$, $p = 0.64$). However, the Spearman's correlation coefficients between the Top1 activity and the *TOP1* CN or the *TOP1* mRNA were ($r = 0.65$, $p = 0.067$) or ($r = 0.95$, $p = 0.0004$), respectively. This indicates that more *TOP1* copies and higher Top1 enzyme activity correlate to increased sensitivity to SN-38.

We mined publicly available datasets to explore the correlation between our *TOP1* CN data to IC_{50} values reported for topotecan [16] and camptothecin [17] in breast cancer cell lines. In agreement with our data, the *TOP1* CN had non-significant negative Spearman's correlations to the IC_{50} values for topotecan ($r = -0.37$, $p = 0.087$) and

for camptothecin ($r = -0.24$, $p = 0.38$). Thus, factors beyond *TOP1* CN, Top1 expression and enzyme activity appear to be involved in the response to SN-38. Based on the results presented above we selected two cell lines to represent the majority of BC patients likely to be candidates for Top1 targeted therapy, namely the MDA-MB-231 and the MCF-7 cell lines, which represent cell lines with *TOP1* CN gain (Additional file 1: Figure S1a,d) and estrogen receptor/HER2 negative or positive cells, respectively.

Establishment and characterization of resistant cell lines

The resistant model systems were established as described in Materials and Methods (Table 1) and the resistant phenotypes of the established cell lines were initially confirmed by exposing the cell lines to their final SN-38 concentration (68.2nM, 36nM, 24nM and 12nM, respectively, Additional file 1: Figure S3). These MTT data confirmed significant increase in resistance to SN-38 and the MDA_{acq} MCF-7_{acq} and MDA_{de novo} and MCF-7_{de novo} cell lines were found to be 7, 9, 95 and 14-fold more resistant to SN-38, respectively, when comparing the IC_{50} to their corresponding parental and DMSO controls (Fig. 1, Table 1). Similar results were shown by crystal violet assay (data not shown). The resistant phenotype was stable for all cell lines as the resistance to SN-38 was retained after withdrawal of SN-38 containing media for 1 month (data not shown).

Growth curves

The growth curves (Additional file 1: Figure S4) illustrate that the resistant cell lines had significantly ($p < 0.05$) lower growth rates when compared to their parental and DMSO controls (all cell lines were grown in the absence of SN-38). The doubling times of MDA_{acq}, MCF-7_{acq}, MDA_{de novo} and MCF-7_{de novo} were 35.5, 44.3, 43.9 and 33.2 h, respectively, which was 7.8, 11.7, 16.8 and 6.1 h longer than their respective DMSO controls. The increase in doubling times was significant ($p < 0.05$) for all cell lines except for MCF-7_{de novo} ($p = 0.08$).

Cell-cycle distribution

Cell cycle analyses were performed without adding SN-38 to investigate the reason for longer doubling time of the resistant cell lines, and the results showed that the resistant cell lines had increased percentage of cells in G2/M phase and decreased percentage of cells in G0/G1 phase in comparison to their parental controls (Additional file 1: Figure S5), which indicated cell cycle arrest at the G2/M phase as a factor for increased doubling time of the resistant cell lines.

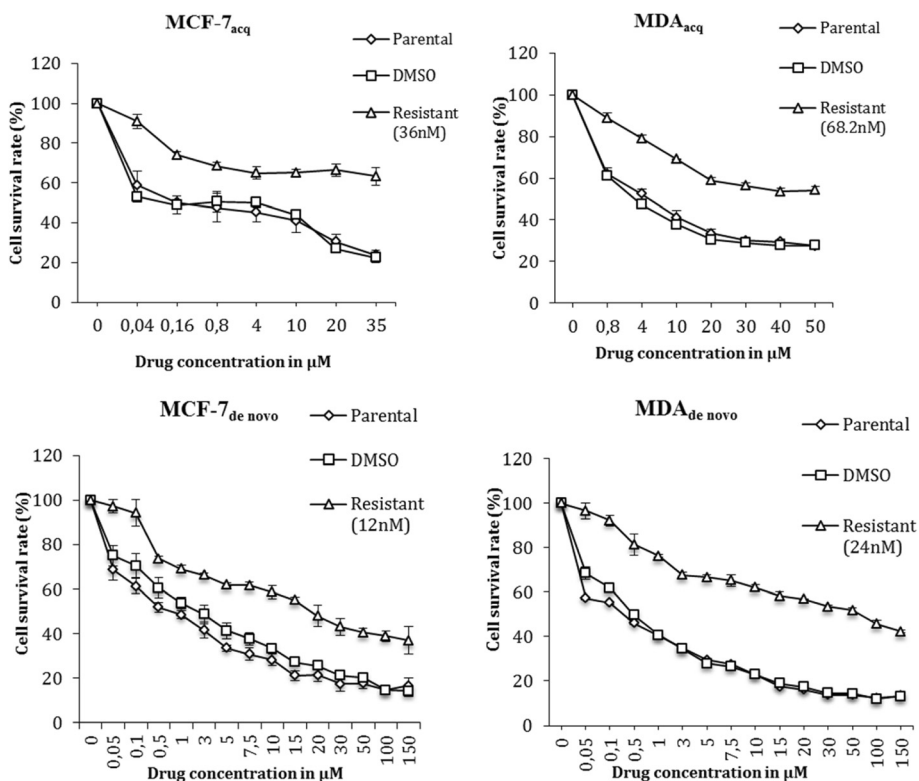


Fig. 1 Sensitivity to SN-38 in the established SN-38 resistant cell lines in comparison to their controls. Using MTT assay, cells were exposed to the shown SN-38 concentrations for 72 h. Triplicate wells were analyzed, and data shown is mean ± s.d. of a representative experiment in percentage. *n* = 3

Cross-resistance to other anti-cancer drugs

The SN-38 resistant cell lines were assessed for cross-resistance to a range of anticancer drugs (cisplatin, docetaxel, epirubicin, LMP400 and LMP776) in comparison to their DMSO controls. Resistant cell lines exhibited different and complex patterns of cross-resistance to various anti-cancer drugs, which is summarized in Table 2. Most strikingly, a consistent pattern was observed with docetaxel as none of the SN-38 resistant cell lines had developed cross-resistance to this drug. Interestingly, the docetaxel resistant MCF-7 and MDA-MB-231

cell lines were cross-resistant to SN-38 (Additional file 1: Figure S6). For epirubicin, both MDA_{acq} and MDA_{de novo} showed cross-resistance whereas the MCF-7_{acq} and MCF-7_{de novo} remained sensitive. For the indenoisoquinoline Top1-targeting drug LMP776, which is a weak substrate for BCRP, three out of four cell lines showed cross-resistance, whereas three out of four SN-38 resistant cell lines remained sensitive to LMP400 (NSC 724998), which is not a BCRP substrate [5]. For cisplatin, the cross-resistance pattern was complex and two out of four cell lines demonstrated cross-resistance (Table 2).

Table 2 Drug sensitivity IC₅₀-values and Relative resistance

Anti- cancer drugs	Epirubicin	RR	Docetaxel	RR	Cisplatin	RR	LMP776	RR	LMP400	RR
MDA _{acq} DMSO	0.4 ± 0.2	4.3	22.0 ± 9.9	1.0	62.8 ± 13.7	1.1	8.9 ± 11.7	5.0	10.5 ± 9.7	1.2
MDA _{acq}	1.7 ± 0.3		21.0 ± 5.3		70.6 ± 4.1		44.6 ± 45.7		12.4 ± 12.2	
MCF-7 _{acq} DMSO	0.9 ± 0.5	1.9	20.4 ± 2.3	1.3	26.1 ± 9.5	2.5	^a		^a	
MCF-7 _{acq}	1.7 ± 0.9		25.8 ± 8.2		65.6 ± 53.4		^a		^a	
MDA _{de novo} DMSO	5.2 ± 3.2	3.4	18.0 ± 3.7	1.5	34.7 ± 7.03	2.7	11.0 ± 6.2	2.0	15.8 ± 6.3	1.6
MDA _{de novo}	17.6 ± 1.4		27.3 ± 2.1		95.1 ± 4.9		22.5 ± 4.3		25.8 ± 3.5	
MCF-7 _{de novo} DMSO	8.1 ± 9.1	1.2	24 ± 7.5	1.5	45.6 ± 5.4	1.2	40.0 ± 14.2	1.4	42.6 ± 36.3	1.4
MCF-7 _{de novo}	10.0 ± 7.9		34.9 ± 10.2		53.7 ± 13.0		55.9 ± 28.6		58.2 ± 36.5	

Mean IC₅₀-value (µM) ± standard deviation of three independent experiments. RR; relative resistance is the IC₅₀-value of the resistant cell line divided by the IC₅₀-value of their corresponding DMSO controls ^aCross-resistance by looking at the graphs as 50 % inhibition was not achieved with these drugs

Florescence in-situ hybridization (FISH)

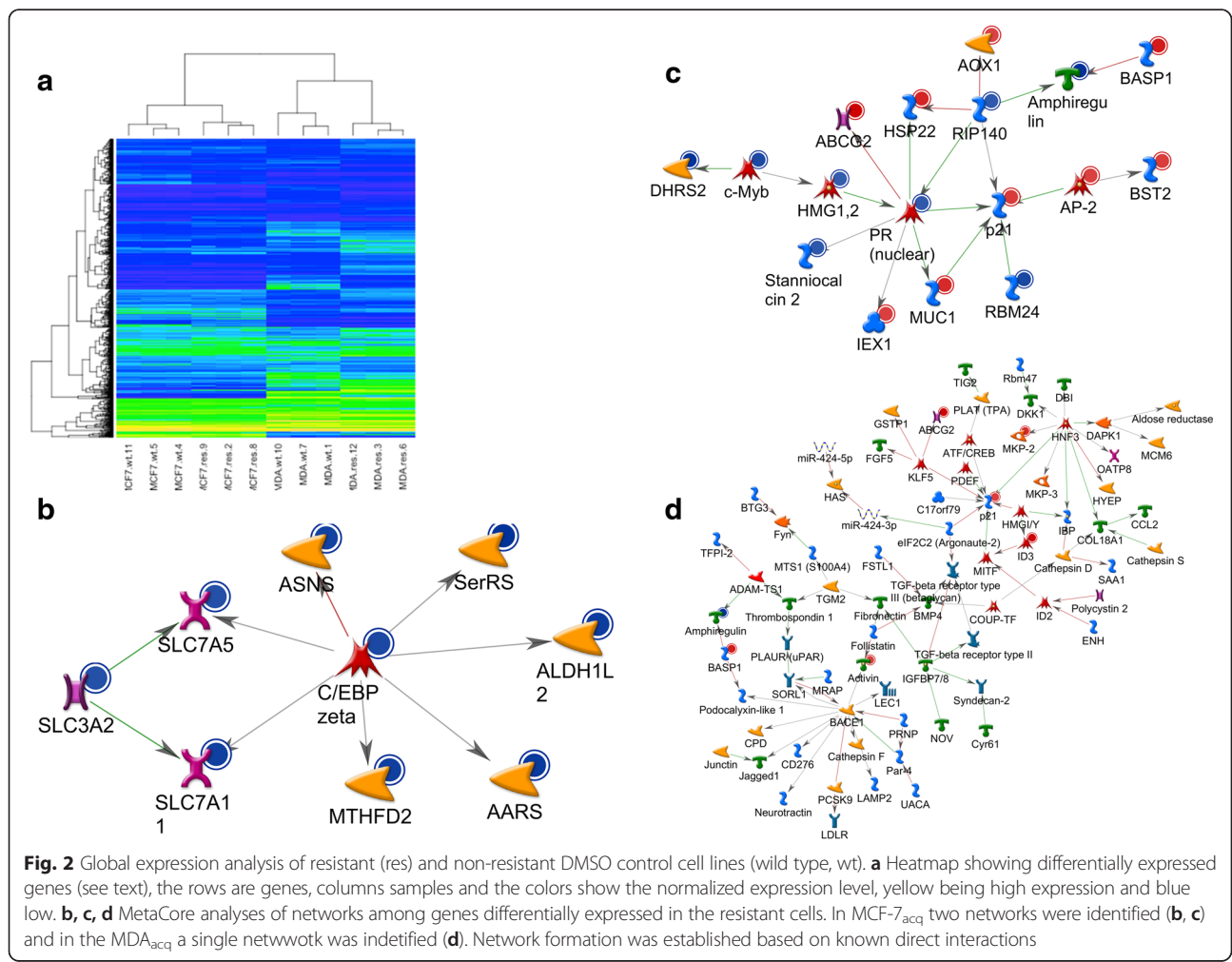
To investigate whether the acquired resistance to SN-38 correlated to aberrations in *TOP1* or *TOP2A* at the gene level, FISH analysis was performed on parental, MDA_{acq} and MCF-7_{acq} cell lines. No differences in the *TOP1* or *TOP2A* CN between the resistant cell lines and the respective control cell lines were detected. Furthermore, neither *TOP1*/CEN-20 nor *TOP2A*/CEN-17 ratio numbers were different among the respective cell lines (Additional file 1: Table S1).

Gene expression analysis

Genome-wide gene expression analyses on the DMSO control and the two SN-38 acquired resistant cell lines identified differentially expressed genes, which are visualized with a heatmap (Fig. 2a). The MCF-7 cells and MDA-MB-231 cell lines clustered separately; however, resistant cell lines did not cluster separately from DMSO controls (Additional file 1: Figure S7b). The MDA_{acq} model system had numerous differentially expressed genes, 32 of these genes being differentially expressed in

common to both the MDA and the MCF model systems (Additional file 1: Figure S7b and Additional file 2).

The ABCG2 transcript, encoding the breast cancer resistance protein (BCRP), was the most up-regulated in the MDA_{acq} system (32 fold up-regulation) and the second most deregulated in the MCF-7_{acq} system (4 fold up-regulation) (Additional files 3 and 4). Only one other gene in the top 50 was deregulated in common, namely ID3 (inhibitor of DNA binding 3), which was 4 fold up-regulated in both MDA_{acq} and MCF-7_{acq}. It is of interest to note that the ABCB1 transcript, encoding the permeability-glycoprotein (Pgp/MDR1) was not deregulated in the acquired resistance cell lines. Gene Ontology (GO) Molecular Function analysis found that the most prominent common GO term was the category “transcription cofactor activity”, defined by genes that interact selectively and non-covalently with a regulatory transcription factor and also with the basal transcription machinery in order to modulate transcription. Reactome and KEGG pathway analyses identified among the top 10 pathways “Metabolism of xenobiotics by cytochrome



P450”, “Nucleosome assembly” and “DNA damage/ Telomere stress induced senescence” (data not shown). In the MCF-7_{acq} the MetaCore network analysis of the deregulated genes highlighted two networks of 19 and 10 genes with the most connecting nodes being the transcription factors PR and FUS/DDIT3, the kinase inhibitor p21 and the regulatory protein RIP140 (Fig. 2b,c). In the MDA_{acq} cells a network of 94 genes was highlighted and the most connecting nodes being the transcription factors HNF3 and PAX8, as well as the protease BACE1 and the kinase inhibitor p21 (Fig. 2d). These nodes might represent important causative changes for the development of resistance in the model system.

Differential protein expression in SN-38 resistant cell lines

The expression of proteins previously suggested to be involved in resistance to SN-38 (Top1, Top2a, BCRP and MDR1) was evaluated by Western blotting (Fig. 3 and Additional file 1: Figure S8). The levels of Top1 were markedly reduced (<50 %) in MDA_{acq}, MCF-7_{acq} and MDA_{de novo} cell lines while only a minor decrease in Top1 protein expression was seen in MCF-7_{de novo}. Top2a levels remained unchanged in all resistant cell

lines (Additional file 1: Figure S8). A clearly increased protein expression of the drug efflux pumps MDR1 and BCRP was observed in the MDA_{acq} cell line. Likewise, MDA_{de novo} had a strong BCRP_{over}-expression; however, it had only a minor increase in MDR1 expression. A minor increase in expression of BCRP was observed in MCF-7_{acq} and MCF-7_{de novo} while no expression of MDR1 was detected in any of the MCF-7 cell lines.

We applied nanocapillary electrophoresis for more precise quantification of the Top1 protein. Top1 and β-actin were simultaneously detected and fully separated without background signals (Additional file 1: Figure S9). The Top1 signals were normalized by the β-actin signals and compared between resistant and DMSO control cell lines (Fig. 3d). This showed significant ($p < 0.05$) down regulation of Top1 in MDA_{acq} (0.55x), MCF-7_{acq} (0.35x) and MDA_{de novo} (0.12x) whereas the MCF-7_{de novo} showed a slight increase (1.5x). Post translational modifications (PTMs) of Top1 have been associated with sensitivity to Top1 targeting drugs [18, 30] and we therefore analyzed the Top1 isoelectric patterns in the cell lines (Fig. 3e). Overall, the Top1 pI charge profiles were alike in the MCF-7 and MDA-MB-231 DMSO controls with

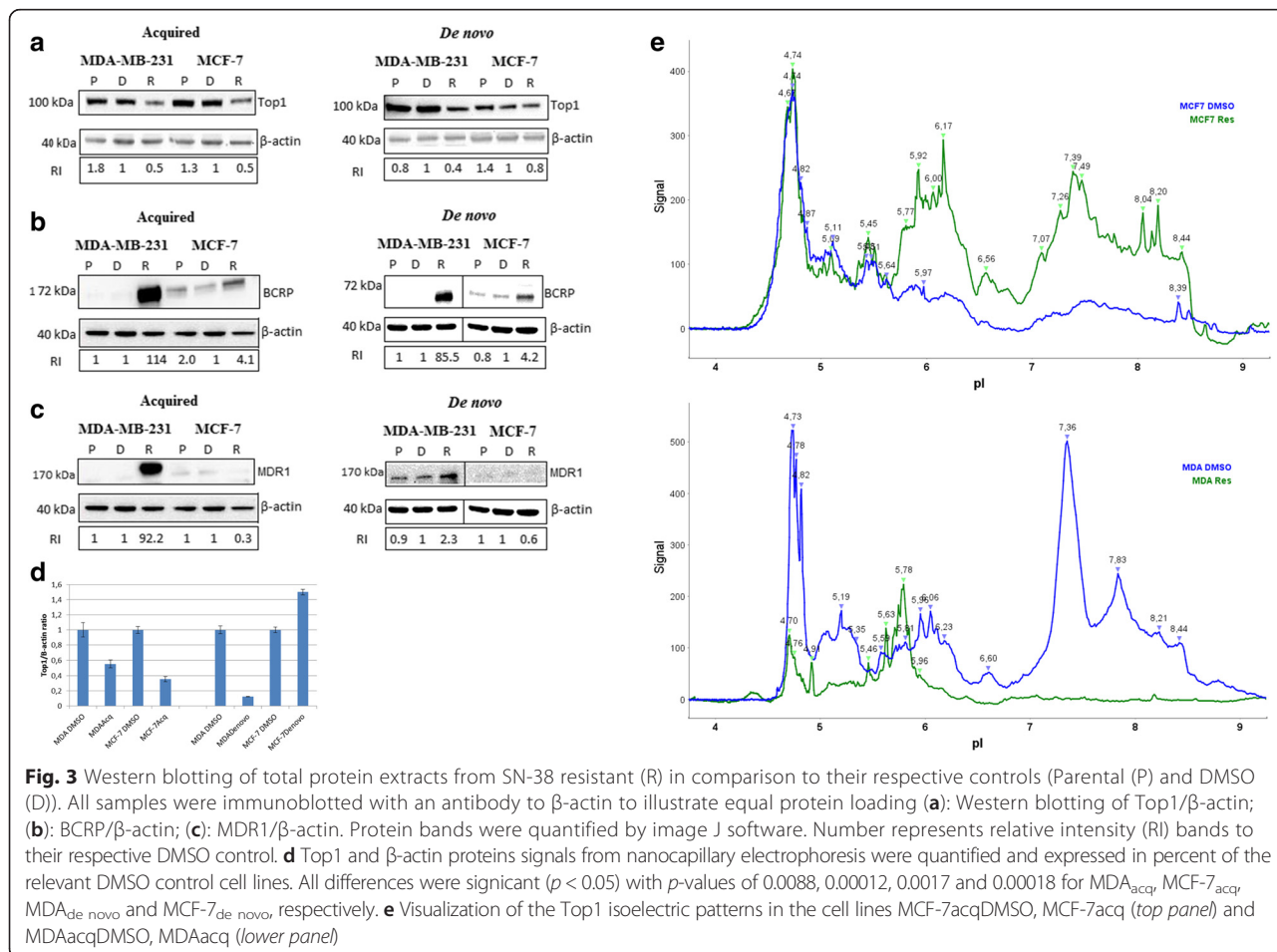


Fig. 3 Western blotting of total protein extracts from SN-38 resistant (R) in comparison to their respective controls (Parental (P) and DMSO (D)). All samples were immunoblotted with an antibody to β-actin to illustrate equal protein loading (a): Western blotting of Top1/β-actin; (b): BCRP/β-actin; (c): MDR1/β-actin. Protein bands were quantified by image J software. Number represents relative intensity (RI) bands to their respective DMSO control. d Top1 and β-actin proteins signals from nanocapillary electrophoresis were quantified and expressed in percent of the relevant DMSO control cell lines. All differences were significant ($p < 0.05$) with p -values of 0.0088, 0.00012, 0.0017 and 0.00018 for MDA_{acq}, MCF-7_{acq}, MDA_{de novo} and MCF-7_{de novo}, respectively. e Visualization of the Top1 isoelectric patterns in the cell lines MCF-7_{acq}DMSO, MCF-7_{acq} (top panel) and MDA_{acq}DMSO, MDA_{acq} (lower panel)

prominent peak signals in the area around 5.5 and 7.5-8.5. When MCF-7_{acq} cells were compared to MCF-7 control cells the pI peak pattern was very similar to the MCF-7 DMSO controls indicating no major changes in Top1 PTMs in the resistant MCF-7 cells. However, the MDA_{acq} cells lost the peak signals in the pI range around 5.5 and 7.5-8.5 but gained peak signals around pI 5 and pI 6.4. These data indicates that Top1 PTMs are changed in the MDA_{acq} cells.

Inhibition of BCRP drug-efflux pump

To investigate the functional importance of the observed up-regulation of the BCRP pump in SN-38 resistance in breast cancer cells, we inhibited its activity using Ko143, a specific inhibitor of this pump [31, 32]. The Ko143 compound did not have any effect on cell survival and did not interfere with the effect of SN-38 on the DMSO control cell lines. Co-treatment with Ko143 and SN-38 resulted in significant ($p < 0.05$) and complete re-sensitization of the MDA_{acq}, MDA_{de novo} and MCF-7_{de novo} cell lines to the level of DMSO control cell line. Although significant ($p = 0.01$) the MCF-7_{acq} was

only slightly re-sensitized to SN-38 following Ko143 co-treatment (Fig. 4).

Discussion

Resistance to treatment is a major obstacle in the current management of BC patients. As response rates to Top1 inhibitors in mBC is around 30 % [6, 8] it is clear that the majority of patients are or become resistant. In order to develop novel non-cross-resistant agents and to identify predictive molecular markers, a more detailed insight into the underlying molecular mechanisms of drug resistance is necessary. Although the occurrence of resistance to camptothecins is not understood in detail, it is thought to be mediated by multiple mechanisms, including, but not limited to, reduced drug-target interactions, down-regulation of the Top1 enzyme, *TOP1* gene mutations and increased drug efflux, resulting from up-regulated expression of efflux drug transporters [4, 33, 34]. We report here the first preclinical model system of SN-38 drug resistance in BC. After testing 52 human BC cell lines, we selected two lines based on SN-38 sensitivity, *TOP1* gene copy status, HER2

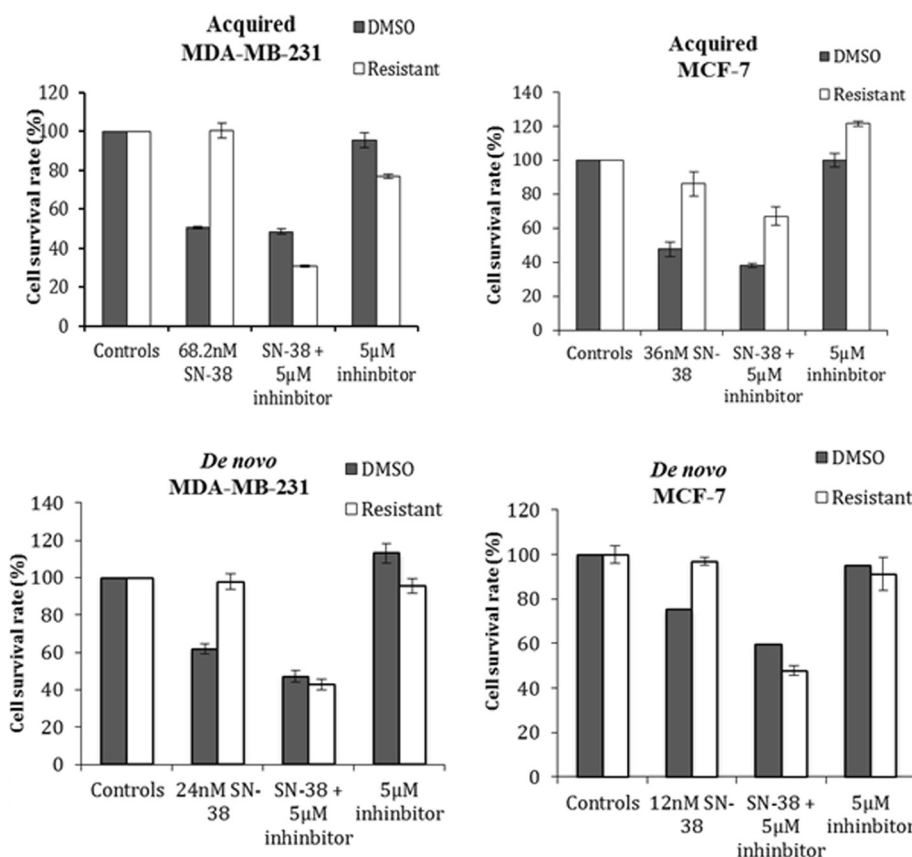


Fig. 4 Inhibition of the BCRP efflux pump in SN-38 resistant cell lines in comparison to their controls in MTT assay. Cells were exposed to their corresponding final SN-38 concentration with or without Ko143 (5 µM) for 72 h. Triplicate wells were analyzed, and data shown is mean ± s.d. of a representative experiment in percent of untreated cells (controls), $n = 3$. The p -values between SN-38 treated and SN-38 + 5 µM inhibitor were all below 0.05 (the p -values for MDA_{acq}, MCF-7_{acq}, MDA_{de novo} and MCF-7_{de novo} were 9.6E-5, 0.01, 7.2E-5 and 0.0001, respectively)

status and estrogen receptor protein expression, and used these two cell lines to develop SN-38 resistance by either exposing them to stepwise increasing concentrations of SN-38 over a period of 6 months or by selecting the cell population that survived exposure to the highest SN-38 concentration.

Some common traits were identified in the SN-38 resistance mechanisms of all four SN-38 resistant cell lines, independently of these cell lines being de novo resistant or having acquired resistance, and also irrespectively of whether or not the cell lines expressed estrogen receptor (Table 2 and Figs. 3 and 4). Two of these were particularly evocative: BCRP/ABCG2 and ID3.

BCRP

We found mRNA and protein up-regulation of the xenobiotic drug transporter BCRP in the SN-38 resistant BC lines. BCRP has previously been shown to transport camptothecins [35] and to confer resistance to SN-38 in colon cancer cell lines [5, 36] and non-small cell lung cancer cells [37]. We found that BCRP was functionally involved in resistance to SN-38 in our BC lines as inhibition of BCRP reverted the resistance phenotype of the SN-38 resistant BC cell lines, although the resistant phenotype of MCF-7_{acq} was only slightly re-sensitized (Fig. 4). Thus, development of resistance may be multifactorial and clonal bias may also contribute to differences in the specific molecular mechanisms for resistance to SN-38. These data are consistent with results obtained with a mouse model of BC that identified over-expression of BCRP as an in vivo mechanism of resistance to topotecan and showed that genetic ablation of BCRP increases survival of topotecan treated animals [38]. Similarly, in a BCRP (-/-) mouse model with orthotopically transplanted BC tumor cells, co-treatment with topotecan and the BCRP inhibitor Ko143 significantly increased survival compared to topotecan monotherapy [32]. These pre-clinical data and the fact that BCRP is highly expressed in aggressive breast cancer subtypes [39, 40] makes this drug efflux transporter interesting as predictive biomarker and/or as a therapeutic target.

ID3

ID proteins are helix-loop-helix (HLH) proteins that can form heterodimers with other HLH proteins and inhibit its interaction partner in binding to DNA. ID3 is involved in tumor growth, invasiveness, metastasis, and angiogenesis [41], and was up-regulated in the SN-38 resistant BC cell lines (Additional file 1: Figure S10). This is the first report to associate ID3 with resistance to SN-38 and one possible explanation for this observation is that negative regulation of DNA-binding by dimer partners slows down cell cycle and results in increased numbers of cells in the G0/G1 phase - as we found in our

cell cycle analyses- which in turn will reduce sensitivity to SN-38 (Additional file 1: Figure S5).

Taxanes are currently regarded as the most efficient drug class in the management of BC and are commonly used in neoadjuvant and adjuvant therapy of BC and in management of mCB. In spite of showing overall response rates of more than 40 %, patients progress in a relative short time, and in many cases show cross-resistance to second-line anthracyclines and subsequent regimens. Interestingly, none of the SN-38 resistant cell lines had acquired cross-resistance to docetaxel while both of the MDA-MB-231 SN-38 resistant cell lines displayed minor cross-resistance to the anthracycline epirubicin (Table 2). It is quite intriguing that even in the MDA_{acq} cell line, which had a very strong up-regulation of the MDR1 protein, the cells retained sensitivity to docetaxel. Furthermore, our previously reported docetaxel resistant BC cell lines showed cross-resistance to SN-38 (Additional file 1: Figure S6). With an objective response rate of only 30 % to irinotecan in docetaxel-refractory mBC, the present preclinical results indicate that irinotecan could be administered prior to docetaxel to minimize cross-resistance between these two drugs. Although epirubicin is not considered a substrate for BCRP, a recent study has shown that high expression of BCRP correlated with resistance to epirubicin in colorectal cancer cells [42] and this is consistent with our findings in the SN-38 resistant MDA-MB-231 cell lines with high BCRP expression. To try to address the issue of cross-resistance, we included two novel indenoisoquinoline Top-1 inhibitors, LMP400 and LMP776, in this study, both of which are in early clinical trials and are well-tolerated (<https://clinicaltrials.gov/ct2/show/NCT01051635>, <https://clinicaltrials.gov/ct2/show/NCT01794104>). Remarkably, LMP400 did not display cross-resistance with SN-38 in three of the four SN-38 resistant BC cell lines (Table 2), which may be explained by the fact that LMP400 (NSC 724998) is not a substrate for BCRP [5]. This suggests a therapeutic potential for LMP400 in BC following disease recurrence upon irinotecan treatment. In contrast, 3 of the 4 SN-38 resistant cell lines were cross-resistant to LMP776 (Table 2).

Clearly, factors beyond ABCG2/BCRP may be involved in resistance to SN-38. To address other possibilities we explored other, known, molecular mechanisms underlying resistance to SN-38. In a panel of breast cancer cell lines with varying levels of *TOP1* CN, *TOP1* mRNA, Top1 protein and enzyme activity, we found consistency between the *TOP1* CN and protein levels (Additional file 1: Figure S2). Furthermore, higher *TOP1* mRNA levels were significantly associated with increased enzyme activity and non-significantly associated to increased sensitivity to SN-38, which is supported by other studies using fewer cell lines [20, 26–29, 43, 44]. The level of Top1 protein was reduced in the MDA_{acq}, MCF-7_{acq}

and MDA_{de novo} cell lines whereas only a minor decrease was observed in the MCF-7_{de novo}. These results recapitulate data from a BC mouse model of acquired topotecan resistance that suggested reduced levels of Top1 as a mechanism of in vivo resistance [38]. The mechanisms causing reduced levels of Top1 protein remain elusive as no changes were observed in the *TOP1* CN or gene expression. However, this suggests that acquired resistance to SN-38 might involve a decrease in Top1 protein levels, which is also supported by studies demonstrating a correlation between reduced Top1 levels and reduced sensitivity to Top1 targeting drugs [45, 46]. The most likely reason for these observations is that lower levels of Top1 leads to reduction in the covalent-complex-dependent double-strand breaks and thereby to reduced cell death. However, reduced Top1 expression is probably only one among several resistance mechanisms to SN-38, as the Top1 level only changed marginally in the MCF-7_{de novo} cell line. Consistently, a recent study suggested elevated levels of Top1 as a predictive biomarker for irinotecan response in MBC patients [47]. The Top1 protein may be modified by several PTMs including phosphorylation [18, 30, 48], ubiquitination [49] and SUMOylation [50]. These modifications of Top1 have been associated to the response to Top1 targeting drugs and we therefore compared differences in the Top1 isoelectric patterns in the sensitive and resistant cell lines. We identified a novel pattern of the Top1 isoelectric patterns in the MDA_{acq} cells, which may contribute to the resistance to SN-38 (Fig. 3e).

Conclusion

In conclusion, molecular characterization of the developed SN-38 resistant human BC cell line model system revealed that acquisition of resistance to SN-38 in vitro is multifactorial and that acquired or *de novo* resistance share fundamental characteristics. In particular, up-regulation of the BCRP drug efflux pump, low proliferation rates and down-regulation of Top1 protein are suggested as key mediators of SN-38 resistance in human breast cancer cell lines. These preclinical observations should be clinically validated in breast cancer biopsies derived from clinical studies in which the patients were exposed to Top1 inhibitor treatment to generate level 1 evidence for use of these markers.

Additional files

Additional file 1: This file contains the following: **Table S1:** a table with FISH data of *TOP1*/CEN-20 and *TOP2A*/CEN-17, *TOP1*/CEN-20 analyses of 52 human breast cancer cell lines. **Figure S1:** correlations between *TOP1* copy numbers from FISH and SNP analyses, and correlation between *TOP1* copy numbers and gene expression, presentation of 9 breast cancer cell lines with regards to *TOP1* copy numbers, ER and HER2 status and the sensitivity to SN-38. **Figure S2:** consistency between Top1 protein levels and *TOP1* copy numbers, Top1 enzymatic activity in 9

breast cancer cell lines and the influence of SN-38 on Top1 enzymatic activity, dose-response of 9 breast cancer cell lines to SN-38 and IC50 values. **Figure S3:** MTT data demonstration that the the acquired and *de novo* SN-38 resistant cell lines are resistant when grown in the concentration of SN-38 at which the the development of resistance was terminated.

Figure S4: Growth curves of the SN-38 resistant cell lines in comparison to their parental and DMSO controls. **Figure S5:** Cell cycle distribution of resistant cell lines in comparison to their respective DMSO controls.

Figure S6: Sensitivity to SN-38 in docetaxel resistant breast cancer cell lines. **Figure S7:** Global expression analysis showing sample clustering, the number of differentially expressed genes between resistant and wild type DMSO control cell lines and Enrichment of Gene Ontology Molecular Function. **Figure S8:** Western blotting of Top2a in SN-38 resistant cell lines in comparison to their respective controls. **Figure S9:** Nannocapillary analysis of Top1 and β -actin in SN-38 resistant MCF7 and MCF7 control cells. **Figure S10:** Western blotting of ID3 in SN-38 resistant MDA-MB-231 and MCF-7 cells and their controls cells. (PDF 757 kb)

Additional file 2: 32 genes that are differentially expressed in both the MDA-MB-231 and the MCF7 model system. (XLSX 4123 kb)

Additional file 3: The top 50 overexpressed genes in the SN-38 resistant MDA-MB-231 cells. (XLSX 61 kb)

Additional file 4: The top 50 overexpressed genes in the SN-38 resistant MCF7 cells. (XLSX 62 kb)

Abbreviations

BC: breast cancer; BCRP: breast cancer resistance protein; CEN17: centromere 17; CEN-20: centromere 20; CN: copy number; ER: estrogen receptor; FISH: Florescence in-situ hybridization; GO: Gene Ontology; HER2: human epidermal growth factor receptor 2; ID3: inhibitor of DNA binding 3; mBC: metastatic breast cancer; Pgp/MDR1: permeability-glycoprotein; PTM: Post translational modification.; SNP: single- nucleotide polymorphism; *TOP1*: topoisomerase I gene; Top1: topoisomerase I protein.

Competing interests

The authors declare that they have no competing interests.

Authors' contributions

HJ and KA established the resistant cell lines, acquired data for drug sensitivity, protein levels by western blots and analyzed/interpreted the data; HJ drafted the initial manuscript, acquired data from cell cycle analysis and inhibition of ABCG2/BCRP; LF acquired, analyzed and interpreted data from drug testing of additional breast cancer cells and Top1 activity assays; SWT analyzed and interpreted the gene expression data; JBN acquired, analyzed and interpreted data for the nanno capillary analyses of Top1; JP acquired and analyzed Top1 activity data; KND acquired and analyzed data from the gene expression analyses; SNH established docetaxel resistant breast cancer cells and acquired data and analyzed for SN-38 sensitivity; BD analyzed and acquired data for the establishment of the SN-38 resistant cells; SLN acquired and analyzed data for FISH analyses; MS and BRK established the Top1 activity assay and analyzed and interpreted the data; JMo interpreted data from nanno capillary set-up and critically revised the manuscript for important intellectual content; PH and MG acquired, analyzed and interpreted data for cell cycle analyses; MS, JMa and JF contributed to conception and design, acquired, analyzed and interpreted the SNP and gene expression data from the 52 breast cancer cell lines; YP contributed to conception and design and provided LMP drugs; ASS contributed to conception and design; NB and JS contributed to conception, design and wrote the manuscript. All authors have read and approved the final version of the manuscript.

Acknowledgments

We acknowledge DAKO A/S, Denmark for providing the TOP1 probe mix. This work was supported by The IMK foundation; Danish National Research Foundation (26-331-86-2): Sino-Danish Breast Cancer Research Centre; A Race Against Breast Cancer; Danish Center for Translational Breast Cancer Research; The John and Birthe Meyer Foundation; and the Netherlands Genomics Initiative (NGI)/the Netherlands Organization for Scientific Research.

Author details

¹Faculty of Health and Medical Sciences, Department of Veterinary Disease Biology, Section for Molecular Disease Biology and Sino-Danish Breast Cancer Research Centre, University of Copenhagen, Strandboulevarden 49, DK-2100 Copenhagen, Denmark. ²Department of Pathology, Aarhus University Hospital, Noerrebrogade 44, building 188, 8000 Aarhus C, Denmark. ³DTU Multiassay Core (DMAC), Technical University of Denmark, Kemitorvet Building 208, DK-2800 Lyngby, Denmark. ⁴Department of Molecular Biology and Genetics, Aarhus University, C.F. Møllers Allé 3, 8000 Aarhus C, Denmark. ⁵Brain Tumor Biology, Danish Cancer Society Research Center, Strandboulevarden 49, DK-2100 Copenhagen, Denmark. ⁶Erasmus MC Cancer Institute, Department of Medical Oncology and Cancer Genomics Netherlands, Erasmus MC, Rotterdam, The Netherlands. ⁷National Institutes of Health, National Cancer Institute, Center for Cancer Research, Developmental Therapeutics Branch and Laboratory of Molecular, Pharmacology, 37 Convent Drive, Building 37, Room 5068, Bethesda, MD 20892-4255, USA.

Received: 21 July 2015 Accepted: 18 January 2016

Published online: 22 January 2016

References

- Cardoso F, Fallowfield L, Costa A, Castiglione M, Senkus E. Locally recurrent or metastatic breast cancer: ESMO Clinical Practice Guidelines for diagnosis, treatment and follow-up. *Ann Oncol*. 2011;22 Suppl 6:vi25–30.
- Roche H, Vahdat LT. Treatment of metastatic breast cancer: second line and beyond. *Ann Oncol*. 2011;22(5):1000–10.
- Arnold D, Stein A. Personalized treatment of colorectal cancer. *Onkologie*. 2012;35 Suppl 1:42–8.
- Pommier Y. Drugging topoisomerases: lessons and challenges. *ACS Chem Biol*. 2013;8(1):82–95.
- Antony S, Agama KK, Miao ZH, Takagi K, Wright MH, Robles AI, et al. Novel indenoisoquinolines NSC 725776 and NSC 724998 produce persistent topoisomerase I cleavage complexes and overcome multidrug resistance. *Cancer Res*. 2007;67(21):10397–405.
- Kumler I, Brunner N, Stenvang J, Balslev E, Nielsen DL. A systematic review on topoisomerase 1 inhibition in the treatment of metastatic breast cancer. *Breast Cancer Res Treat*. 2013;138(2):347–58.
- Perez EA, Hillman DW, Mailliard JA, Ingle JN, Ryan JM, Fitch TR, et al. Randomized phase II study of two irinotecan schedules for patients with metastatic breast cancer refractory to an anthracycline, a taxane, or both. *J Clin Oncol*. 2004;22(14):2849–55.
- Awada A, Garcia AA, Chan S, Jerusalem GH, Coleman RE, Huizing MT, et al. Two schedules of etirinotecan pegol (NKTR-102) in patients with previously treated metastatic breast cancer: a randomised phase 2 study. *Lancet Oncol*. 2013.
- Perez EA, Awada A, O'Shaughnessy J, Rugo HS, Twelves C, Im SA, et al. Etrinotecan pegol (NKTR-102) versus treatment of physician's choice in women with advanced breast cancer previously treated with an anthracycline, a taxane, and capecitabine (BEACON): a randomised, open-label, multicentre, phase 3 trial. *Lancet Oncol*. 2015;16(15):1556–68.
- Hoki Y, Fujimori A, Pommier Y. Differential cytotoxicity of clinically important camptothecin derivatives in P-glycoprotein-overexpressing cell lines. *Cancer Chemother Pharmacol*. 1997;40(5):433–8.
- Kumler I, Balslev E, Poulsen TS, Nielsen SL, Nygard SB, Romer MU, et al. Topoisomerase-1 gene copy aberrations are frequent in patients with breast cancer. *Int J Cancer*. 2015.
- Kumler I, Balslev E, Stenvang J, Brunner N, Nielsen D. A phase II study of weekly irinotecan in patients with locally advanced or metastatic. *BMC Cancer*. 2015;15(1):1072.
- Cinelli MA, Cordero B, Dexheimer TS, Pommier Y, Cushman M. Synthesis and biological evaluation of 14-(aminoalkyl-aminomethyl)aromathecins as topoisomerase I inhibitors: investigating the hypothesis of shared structure-activity relationships. *Bioorg Med Chem*. 2009;17(20):7145–55.
- Hollestelle A, Nagel JH, Smid M, Lam S, Elstrodt F, Wasielewski M, et al. Distinct gene mutation profiles among luminal-type and basal-type breast cancer cell lines. *Breast Cancer Res Treat*. 2010;121(1):53–64.
- Hansen SN, Westergaard D, Thomsen MB, Vistesen M, Do KN, Fogh L, et al. Acquisition of docetaxel resistance in breast cancer cells reveals upregulation of ABCB1 expression as a key mediator of resistance accompanied by discrete upregulation of other specific genes and pathways. *Tumour Biol*. 2015.
- Barretina J, Caponigro G, Stransky N, Venkatesan K, Margolin AA, Kim S, et al. The Cancer Cell Line Encyclopedia enables predictive modelling of anticancer drug sensitivity. *Nature*. 2012;483(7391):603–7.
- Garnett MJ, Edelman EJ, Heidorn SJ, Greenman CD, Dastur A, Lau KW, et al. Systematic identification of genomic markers of drug sensitivity in cancer cells. *Nature*. 2012;483(7391):570–5.
- Hekmat O, Munk S, Fogh L, Yadav R, Francavilla C, Horn H, et al. TIMP-1 increases expression and phosphorylation of proteins associated with drug resistance in breast cancer cells. *J Proteome Res*. 2013;12(9):4136–51.
- Knizetova P, Ehrmann J, Hlobilkova A, Vancova I, Kalita O, Kolar Z, et al. Autocrine regulation of glioblastoma cell cycle progression, viability and radioresistance through the VEGF-VEGFR2 (KDR) interplay. *Cell Cycle*. 2008;7(16):2553–61.
- Romer MU, Jensen NF, Nielsen SL, Muller S, Nielsen KV, Nielsen HJ, et al. TOP1 gene copy numbers in colorectal cancer samples and cell lines and their association to in vitro drug sensitivity. *Scand J Gastroenterol*. 2012;47(1):68–79.
- Nielsen KV, Muller S, Moller S, Schonau A, Balslev E, Knoop AS, et al. Aberrations of ERBB2 and TOP2A genes in breast cancer. *Mol Oncol*. 2010;4(2):161–8.
- Bjerre C, Vinther L, Belling KC, Wurtz SO, Yadav R, Lademann U, et al. TIMP1 overexpression mediates resistance of MCF-7 human breast cancer cells to fulvestrant and down-regulates progesterone receptor expression. *Tumour Biol*. 2013;34(6):3839–51.
- Benjamini Y, Hochberg Y. Controlling the False Discovery Rate - A Practical and Powerful Approach to Multiple Testing. *Journal of the Royal Statistical Society Series B-Methodological*. 1995;57(1):289–300.
- Yu G, Wang LG, Han Y, He QY. clusterProfiler: an R package for comparing biological themes among gene clusters. *OMICS*. 2012;16(5):284–7.
- Stougaard M, Lohmann JS, Mancino A, Celik S, Andersen FF, Koch J, et al. Single-molecule detection of human topoisomerase I cleavage-ligation activity. *ACS Nano*. 2009;3(1):223–33.
- McLeod HL, Keith WN. Variation in topoisomerase I gene copy number as a mechanism for intrinsic drug sensitivity. *Br J Cancer*. 1996;74(4):508–12.
- Pfister TD, Hollingshead M, Kinders RJ, Zhang Y, Evrard YA, Ji J, et al. Development and validation of an immunoassay for quantification of topoisomerase I in solid tumor tissues. *PLoS One*. 2012;7(12):e50494.
- Braun MS, Richman SD, Quirke P, Daly C, Adlard JW, Elliott F, et al. Predictive biomarkers of chemotherapy efficacy in colorectal cancer: results from the UK MRC FOCUS trial. *J Clin Oncol*. 2008;26(16):2690–8.
- Kostopoulos I, Karavasilis V, Karina M, Bobos M, Xiros N, Pentheroudakis G, et al. Topoisomerase I but not thymidylate synthase is associated with improved outcome in patients with resected colorectal cancer treated with irinotecan containing adjuvant chemotherapy. *BMC Cancer*. 2009;9:339.
- Yu D, Khan E, Khaleque MA, Lee J, Laco G, Kohlhagen G, et al. Phosphorylation of DNA topoisomerase I by the c-Abl tyrosine kinase confers camptothecin sensitivity. *J Biol Chem*. 2004;279(50):51851–61.
- Allen JD, van Loevezijn A, Lakhai JM, van der Valk M, van Tellingen O, Reid G, et al. Potent and specific inhibition of the breast cancer resistance protein multidrug transporter in vitro and in mouse intestine by a novel analogue of fumitremorgin C. *Mol Cancer Ther*. 2002;1(6):417–25.
- Zander SA, Sol W, Greenberger L, Zhang Y, van TO, Jonkers J, et al. EZN-2208 (PEG-SN38) overcomes ABCG2-mediated topotecan resistance in BRCA1-deficient mouse mammary tumors. *PLoS One*. 2012;7(9):e45248.
- Beretta GL, Gatti L, Perego P, Zaffaroni N. Camptothecin resistance in cancer: insights into the molecular mechanisms of a DNA-damaging drug. *Curr Med Chem*. 2013;20(12):1541–65.
- Pommier Y. Topoisomerase I, inhibitors: camptothecins and beyond. *Nat Rev Cancer*. 2006;6(10):789–802.
- Kawabata S, Oka M, Shiozawa K, Tsukamoto K, Nakatomi K, Soda H, et al. Breast cancer resistance protein directly confers SN-38 resistance of lung cancer cells. *Biochem Biophys Res Commun*. 2001;280(5):1216–23.
- Candeil L, Gourdier I, Peyron D, Vezzio N, Copois V, Bibeau F, et al. ABCG2 overexpression in colon cancer cells resistant to SN38 and in irinotecan-treated metastases. *Int J Cancer*. 2004;109(6):848–54.
- Bessho Y, Oguri T, Achiwa H, Muramatsu H, Maeda H, Niimi T, et al. Role of ABCG2 as a biomarker for predicting resistance to CPT-11/SN-38 in lung cancer. *Cancer Sci*. 2006;97(3):192–8.
- Zander SA, Kersbergen A, van der Burg E, de Water N, van Tellingen O, Gunnarsdottir S, et al. Sensitivity and acquired resistance of BRCA1;p53-deficient mouse mammary tumors to the topoisomerase I inhibitor topotecan. *Cancer Res*. 2010;70(4):1700–10.

39. Millis SZ, Gatalica Z, Winkler J, Vranic S, Kimbrough J, Reddy S, et al. Predictive Biomarker Profiling of > 6000 Breast Cancer Patients Shows Heterogeneity in TNBC, With Treatment Implications. *Clin Breast Cancer*. 2015.
40. Yamada A, Ishikawa T, Ota I, Kimura M, Shimizu D, Tanabe M, et al. High expression of ATP-binding cassette transporter ABCC11 in breast tumors is associated with aggressive subtypes and low disease-free survival. *Breast Cancer Res Treat*. 2013;137(3):773–82.
41. Mern DS, Hoppe-Seyler K, Hoppe-Seyler F, Hasskarl J, Burwinkel B. Targeting Id1 and Id3 by a specific peptide aptamer induces E-box promoter activity, cell cycle arrest, and apoptosis in breast cancer cells. *Breast Cancer Res Treat*. 2010;124(3):623–33.
42. Yuan SQ, Zhou ZW, Liang YJ, Fu LW, Chen G, Qiu HB, et al. Correlation of chemosensitivity tested using histoculture drug response assay to expression of multidrug resistance genes and proteins in colorectal cancer tissues. *Ai Zheng*. 2009;28(9):932–8.
43. Eng WK, Faucette L, Johnson RK, Sternglanz R. Evidence that DNA topoisomerase I is necessary for the cytotoxic effects of camptothecin. *Mol Pharmacol*. 1988;34(6):755–60.
44. Shen J, Wei J, Wang H, Yue G, Yu L, Yang Y, et al. A three-gene signature as potential predictive biomarker for irinotecan sensitivity in gastric cancer. *J Transl Med*. 2013;11(1):73.
45. Burgess DJ, Doles J, Zender L, Xue W, Ma B, McCombie WR, et al. Topoisomerase levels determine chemotherapy response in vitro and in vivo. *Proc Natl Acad Sci U S A*. 2008;105(26):9053–8.
46. Miao ZH, Player A, Shankavaram U, Wang YH, Zimonjic DB, Lorenzi PL, et al. Nonclassic functions of human topoisomerase I: genome-wide and pharmacologic analyses. *Cancer Res*. 2007;67(18):8752–61.
47. Jameson GS, Petricoin EF, Sachdev J, Liotta LA, Loesch DM, Anthony SP, et al. A pilot study utilizing multi-omic molecular profiling to find potential targets and select individualized treatments for patients with previously treated metastatic breast cancer. *Breast Cancer Res Treat*. 2014;147(3):579–88.
48. Bandyopadhyay K, Li P, Gjerset RA. CK2-mediated hyperphosphorylation of topoisomerase I targets serine 506, enhances topoisomerase I-DNA binding, and increases cellular camptothecin sensitivity. *PLoS One*. 2012;7(11), e50427.
49. Desai SD, Li TK, Rodriguez-Bauman A, Rubin EH, Liu LF. Ubiquitin/26S proteasome-mediated degradation of topoisomerase I as a resistance mechanism to camptothecin in tumor cells. *Cancer Res*. 2001;61(15):5926–32.
50. Rallabhandi P, Hashimoto K, Mo YY, Beck WT, Moitra PK, D'Arpa P. Sumoylation of topoisomerase I is involved in its partitioning between nucleoli and nucleoplasm and its clearing from nucleoli in response to camptothecin. *J Biol Chem*. 2002;277(42):40020–6.

Submit your next manuscript to BioMed Central and we will help you at every step:

- We accept pre-submission inquiries
- Our selector tool helps you to find the most relevant journal
- We provide round the clock customer support
- Convenient online submission
- Thorough peer review
- Inclusion in PubMed and all major indexing services
- Maximum visibility for your research

Submit your manuscript at
www.biomedcentral.com/submit

